

# Daily Coordination Meeting



14:00 Sign In

# Daily Coordination Meeting

## General Topics:

- Assume all systems are live





RWS-15 SOMD  
10:00 pm

TC3 pour back UL  
4:00 am

PBIA Plinths  
5:00 am

Truck off load #14  
6:00 am

TC3 Pour back Utility  
lvl  
4:00 am

BIPA Plinths  
5:00 am

Truck off load #14  
6:00 am

RWS-15 SOMD  
10:00 pm



## Room Ready

## BCR & SCR Operational Readiness Tracker

BCR 1E

BCR 1W

Starting to Close and change locks for cleaning beginning on 20th of November



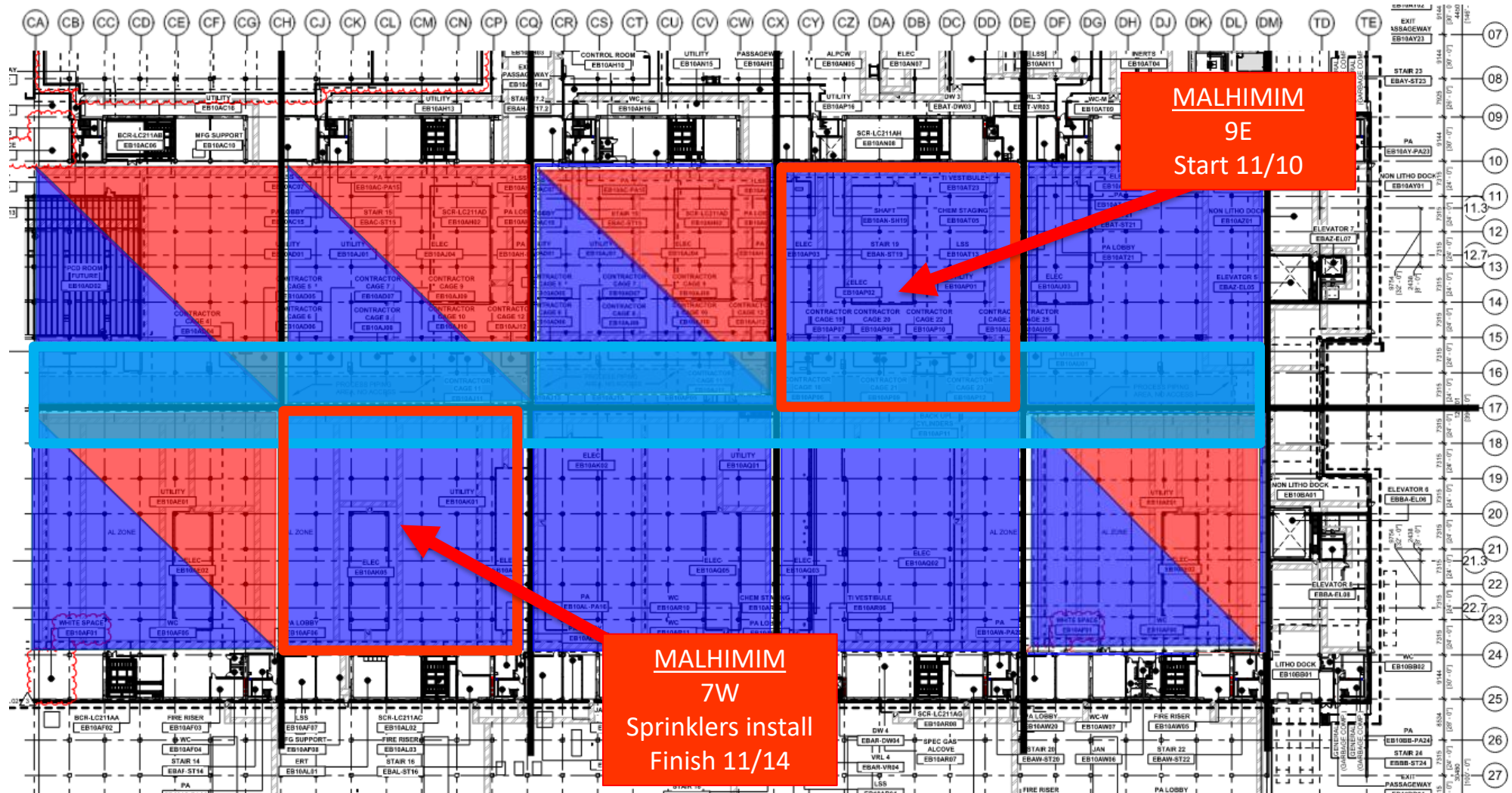


This is a detailed architectural floor plan of a building, likely a laboratory or industrial facility. The plan is color-coded: yellow for shipping/receiving areas, green for storage/chemical areas, purple for utility/electrical areas, and blue for specialized equipment. Numerous rooms are labeled with codes like EB10001, EB10002, etc. The plan includes a grid system with letters (TA to CA) and numbers (07 to 26). Key areas include:

- Shipping/Receiving:** PC SHIPPING, TOOL VEST, ELEVATOR 1 MACHINE ROOM.
- Storage/Chemical:** SCR-LC211A, FMS A, MFR SUPPLY, LSS, ELEC, ELEVATOR 2 MACHINE ROOM.
- Utility/Electrical:** ELEC, ELEVATOR 3, ELEVATOR 4, ELEVATOR 5, ELEVATOR 6, ELEVATOR 7, ELEVATOR 8, ELEVATOR 9, ELEVATOR 10, ELEVATOR 11, ELEVATOR 12, ELEVATOR 13, ELEVATOR 14, ELEVATOR 15, ELEVATOR 16, ELEVATOR 17, ELEVATOR 18, ELEVATOR 19, ELEVATOR 20, ELEVATOR 21, ELEVATOR 22, ELEVATOR 23, ELEVATOR 24, ELEVATOR 25, ELEVATOR 26, ELEVATOR 27, ELEVATOR 28, ELEVATOR 29, ELEVATOR 30, ELEVATOR 31, ELEVATOR 32, ELEVATOR 33, ELEVATOR 34, ELEVATOR 35, ELEVATOR 36, ELEVATOR 37, ELEVATOR 38, ELEVATOR 39, ELEVATOR 40, ELEVATOR 41, ELEVATOR 42, ELEVATOR 43, ELEVATOR 44, ELEVATOR 45, ELEVATOR 46, ELEVATOR 47, ELEVATOR 48, ELEVATOR 49, ELEVATOR 50, ELEVATOR 51, ELEVATOR 52, ELEVATOR 53, ELEVATOR 54, ELEVATOR 55, ELEVATOR 56, ELEVATOR 57, ELEVATOR 58, ELEVATOR 59, ELEVATOR 60, ELEVATOR 61, ELEVATOR 62, ELEVATOR 63, ELEVATOR 64, ELEVATOR 65, ELEVATOR 66, ELEVATOR 67, ELEVATOR 68, ELEVATOR 69, ELEVATOR 70, ELEVATOR 71, ELEVATOR 72, ELEVATOR 73, ELEVATOR 74, ELEVATOR 75, ELEVATOR 76, ELEVATOR 77, ELEVATOR 78, ELEVATOR 79, ELEVATOR 80, ELEVATOR 81, ELEVATOR 82, ELEVATOR 83, ELEVATOR 84, ELEVATOR 85, ELEVATOR 86, ELEVATOR 87, ELEVATOR 88, ELEVATOR 89, ELEVATOR 90, ELEVATOR 91, ELEVATOR 92, ELEVATOR 93, ELEVATOR 94, ELEVATOR 95, ELEVATOR 96, ELEVATOR 97, ELEVATOR 98, ELEVATOR 99, ELEVATOR 100, ELEVATOR 101, ELEVATOR 102, ELEVATOR 103, ELEVATOR 104, ELEVATOR 105, ELEVATOR 106, ELEVATOR 107, ELEVATOR 108, ELEVATOR 109, ELEVATOR 110, ELEVATOR 111, ELEVATOR 112, ELEVATOR 113, ELEVATOR 114, ELEVATOR 115, ELEVATOR 116, ELEVATOR 117, ELEVATOR 118, ELEVATOR 119, ELEVATOR 120, ELEVATOR 121, ELEVATOR 122, ELEVATOR 123, ELEVATOR 124, ELEVATOR 125, ELEVATOR 126, ELEVATOR 127, ELEVATOR 128, ELEVATOR 129, ELEVATOR 130, ELEVATOR 131, ELEVATOR 132, ELEVATOR 133, ELEVATOR 134, ELEVATOR 135, ELEVATOR 136, ELEVATOR 137, ELEVATOR 138, ELEVATOR 139, ELEVATOR 140, ELEVATOR 141, ELEVATOR 142, ELEVATOR 143, ELEVATOR 144, ELEVATOR 145, ELEVATOR 146, ELEVATOR 147, ELEVATOR 148, ELEVATOR 149, ELEVATOR 150, ELEVATOR 151, ELEVATOR 152, ELEVATOR 153, ELEVATOR 154, ELEVATOR 155, ELEVATOR 156, ELEVATOR 157, ELEVATOR 158, ELEVATOR 159, ELEVATOR 160, ELEVATOR 161, ELEVATOR 162, ELEVATOR 163, ELEVATOR 164, ELEVATOR 165, ELEVATOR 166, ELEVATOR 167, ELEVATOR 168, ELEVATOR 169, ELEVATOR 170, ELEVATOR 171, ELEVATOR 172, ELEVATOR 173, ELEVATOR 174, ELEVATOR 175, ELEVATOR 176, ELEVATOR 177, ELEVATOR 178, ELEVATOR 179, ELEVATOR 180, ELEVATOR 181, ELEVATOR 182, ELEVATOR 183, ELEVATOR 184, ELEVATOR 185, ELEVATOR 186, ELEVATOR 187, ELEVATOR 188, ELEVATOR 189, ELEVATOR 190, ELEVATOR 191, ELEVATOR 192, ELEVATOR 193, ELEVATOR 194, ELEVATOR 195, ELEVATOR 196, ELEVATOR 197, ELEVATOR 198, ELEVATOR 199, ELEVATOR 200, ELEVATOR 201, ELEVATOR 202, ELEVATOR 203, ELEVATOR 204, ELEVATOR 205, ELEVATOR 206, ELEVATOR 207, ELEVATOR 208, ELEVATOR 209, ELEVATOR 210, ELEVATOR 211, ELEVATOR 212, ELEVATOR 213, ELEVATOR 214, ELEVATOR 215, ELEVATOR 216, ELEVATOR 217, ELEVATOR 218, ELEVATOR 219, ELEVATOR 220, ELEVATOR 221, ELEVATOR 222, ELEVATOR 223, ELEVATOR 224, ELEVATOR 225, ELEVATOR 226, ELEVATOR 227, ELEVATOR 228, ELEVATOR 229, ELEVATOR 230, ELEVATOR 231, ELEVATOR 232, ELEVATOR 233, ELEVATOR 234, ELEVATOR 235, ELEVATOR 236, ELEVATOR 237, ELEVATOR 238, ELEVATOR 239, ELEVATOR 240, ELEVATOR 241, ELEVATOR 242, ELEVATOR 243, ELEVATOR 244, ELEVATOR 245, ELEVATOR 246, ELEVATOR 247, ELEVATOR 248, ELEVATOR 249, ELEVATOR 250, ELEVATOR 251, ELEVATOR 252, ELEVATOR 253, ELEVATOR 254, ELEVATOR 255, ELEVATOR 256, ELEVATOR 257, ELEVATOR 258, ELEVATOR 259, ELEVATOR 260, ELEVATOR 261, ELEVATOR 262, ELEVATOR 263, ELEVATOR 264, ELEVATOR 265, ELEVATOR 266, ELEVATOR 267, ELEVATOR 268, ELEVATOR 269, ELEVATOR 270, ELEVATOR 271, ELEVATOR 272, ELEVATOR 273, ELEVATOR 274, ELEVATOR 275, ELEVATOR 276, ELEVATOR 277, ELEVATOR 278, ELEVATOR 279, ELEVATOR 280, ELEVATOR 281, ELEVATOR 282, ELEVATOR 283, ELEVATOR 284, ELEVATOR 285, ELEVATOR 286, ELEVATOR 287, ELEVATOR 288, ELEVATOR 289, ELEVATOR 290, ELEVATOR 291, ELEVATOR 292, ELEVATOR 293, ELEVATOR 294, ELEVATOR 295, ELEVATOR 296, ELEVATOR 297, ELEVATOR 298, ELEVATOR 299, ELEVATOR 300, ELEVATOR 301, ELEVATOR 302, ELEVATOR 303, ELEVATOR 304, ELEVATOR 305, ELEVATOR 306, ELEVATOR 307, ELEVATOR 308, ELEVATOR 309, ELEVATOR 310, ELEVATOR 311, ELEVATOR 312, ELEVATOR 313, ELEVATOR 314, ELEVATOR 315, ELEVATOR 316, ELEVATOR 317, ELEVATOR 318, ELEVATOR 319, ELEVATOR 320, ELEVATOR 321, ELEVATOR 322, ELEVATOR 323, ELEVATOR 324, ELEVATOR 325, ELEVATOR 326, ELEVATOR 327, ELEVATOR 328, ELEVATOR 329, ELEVATOR 330, ELEVATOR 331, ELEVATOR 332, ELEVATOR 333, ELEVATOR 334, ELEVATOR 335, ELEVATOR 336, ELEVATOR 337, ELEVATOR 338, ELEVATOR 339, ELEVATOR 340, ELEVATOR 341, ELEVATOR 342, ELEVATOR 343, ELEVATOR 344, ELEVATOR 345, ELEVATOR 346, ELEVATOR 347, ELEVATOR 348, ELEVATOR 349, ELEVATOR 350, ELEVATOR 351, ELEVATOR 352, ELEVATOR 353, ELEVATOR 354, ELEVATOR 355, ELEVATOR 356, ELEVATOR 357, ELEVATOR 358, ELEVATOR 359, ELEVATOR 360, ELEVATOR 361, ELEVATOR 362, ELEVATOR 363, ELEVATOR 364, ELEVATOR 365, ELEVATOR 366, ELEVATOR 367, ELEVATOR 368, ELEVATOR 369, ELEVATOR 370, ELEVATOR 371, ELEVATOR 372, ELEVATOR 373, ELEVATOR 374, ELEVATOR 375, ELEVATOR 376, ELEVATOR 377, ELEVATOR 378, ELEVATOR 379, ELEVATOR 380, ELEVATOR 381, ELEVATOR 382, ELEVATOR 383, ELEVATOR 384, ELEVATOR 385, ELEVATOR 386, ELEVATOR 387, ELEVATOR 388, ELEVATOR 389, ELEVATOR 390, ELEVATOR 391, ELEVATOR 392, ELEVATOR 393, ELEVATOR 394, ELEVATOR 395, ELEVATOR 396, ELEVATOR 397, ELEVATOR 398, ELEVATOR 399, ELEVATOR 400, ELEVATOR 401, ELEVATOR 402, ELEVATOR 403, ELEVATOR 404, ELEVATOR 405, ELEVATOR 406, ELEVATOR 407, ELEVATOR 408, ELEVATOR 409, ELEVATOR 410, ELEVATOR 411, ELEVATOR 412, ELEVATOR 413, ELEVATOR 414, ELEVATOR 415, ELEVATOR 416, ELEVATOR 417, ELEVATOR 418, ELEVATOR 419, ELEVATOR 420, ELEVATOR 421, ELEVATOR 422, ELEVATOR 423, ELEVATOR 424, ELEVATOR 425, ELEVATOR 426, ELEVATOR 427, ELEVATOR 428, ELEVATOR 429, ELEVATOR 430, ELEVATOR 431, ELEVATOR 432, ELEVATOR 433, ELEVATOR 434, ELEVATOR 435, ELEVATOR 436, ELEVATOR 437, ELEVATOR 438, ELEVATOR 439, ELEVATOR 440, ELEVATOR 441, ELEVATOR 442, ELEVATOR 443, ELEVATOR 444, ELEVATOR 445, ELEVATOR 446, ELEVATOR 447, ELEVATOR 448, ELEVATOR 449, ELEVATOR 450, ELEVATOR 451, ELEVATOR 452, ELEVATOR 453, ELEVATOR 454, ELEVATOR 455, ELEVATOR 456, ELEVATOR 457, ELEVATOR 458, ELEVATOR 459, ELEVATOR 460, ELEVATOR 461, ELEVATOR 462, ELEVATOR 463, ELEVATOR 464, ELEVATOR 465, ELEVATOR 466, ELEVATOR 467, ELEVATOR 468, ELEVATOR 469, ELEVATOR 470, ELEVATOR 471, ELEVATOR 472, ELEVATOR 473, ELEVATOR 474, ELEVATOR 475, ELEVATOR 476, ELEVATOR 477, ELEVATOR 478, ELEVATOR 479, ELEVATOR 480, ELEVATOR 481, ELEVATOR 482, ELEVATOR 483, ELEVATOR 484, ELEVATOR 485, ELEVATOR 486, ELEVATOR 487, ELEVATOR 488, ELEVATOR 48

WW  
RHS for roll-up doors

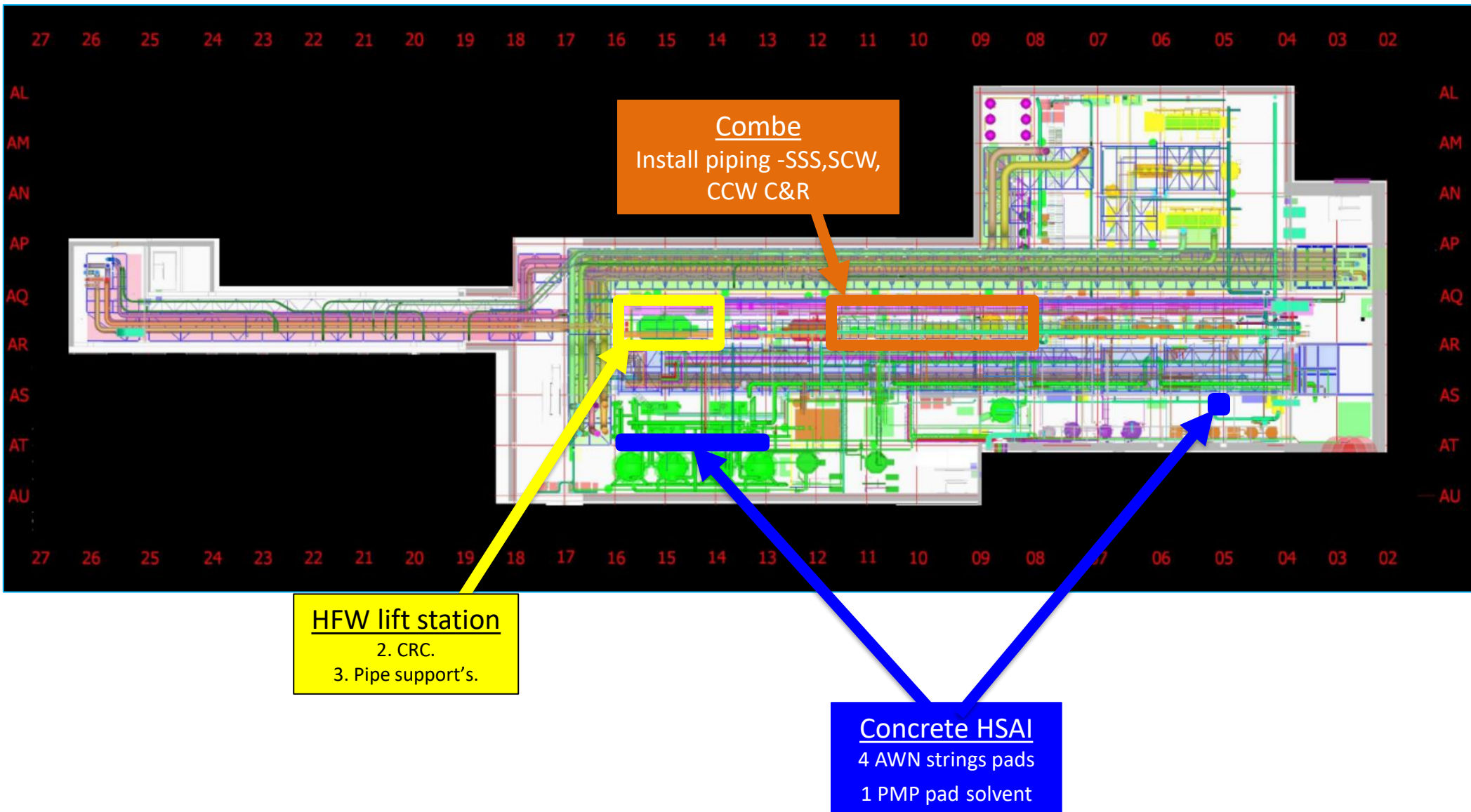
# UTILITY LEVEL MOD2



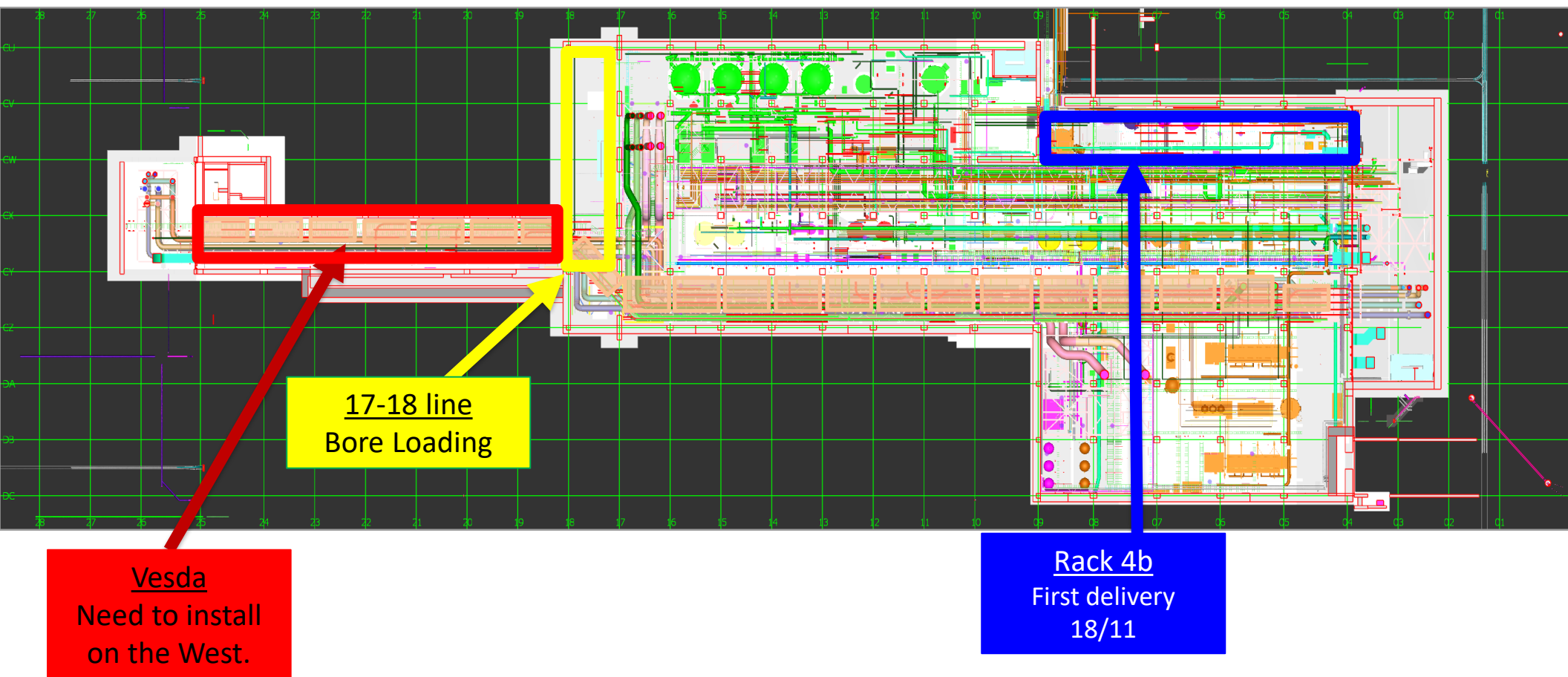




## SUT 38.1 LEVEL

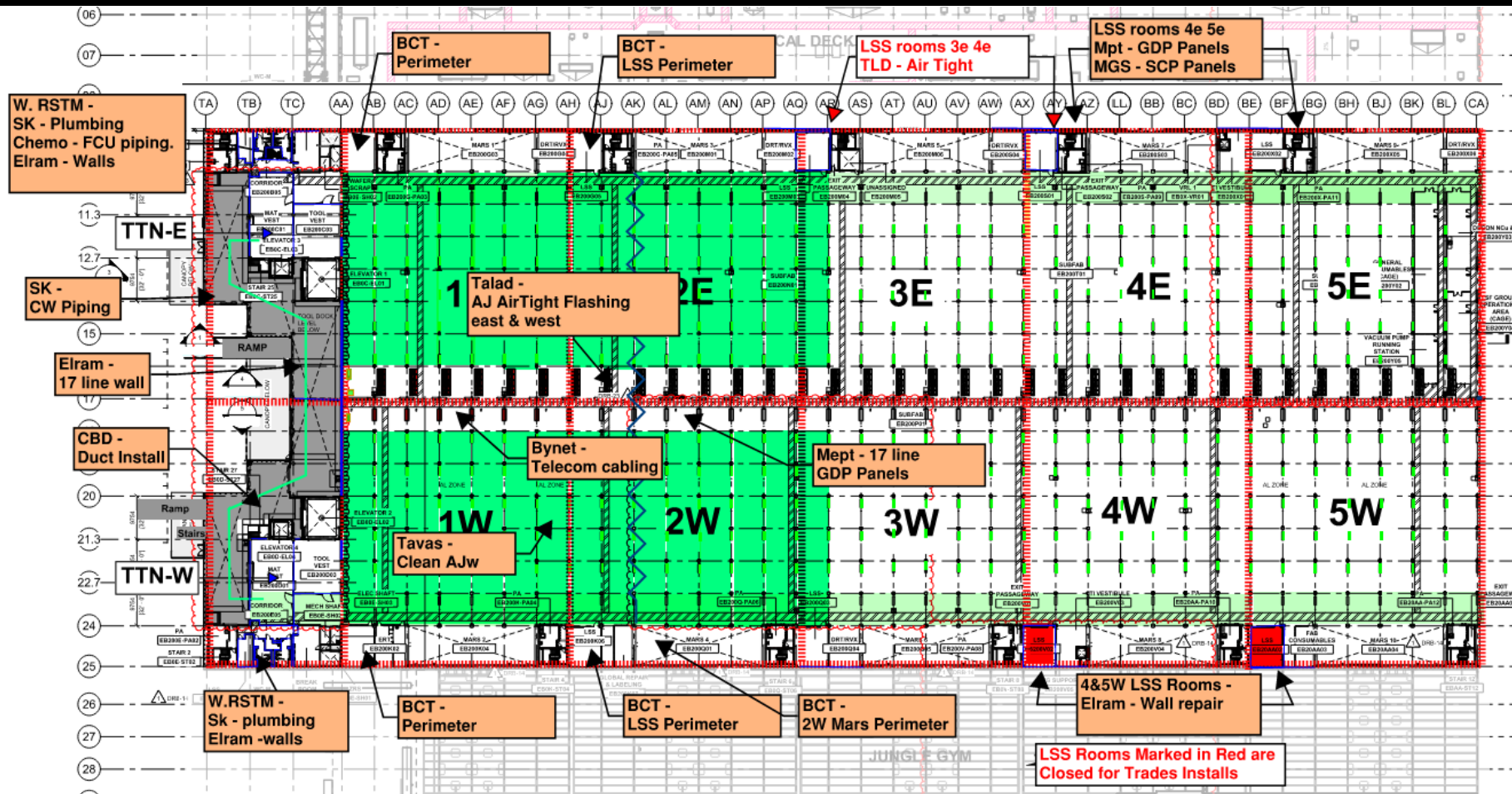


## SUT 38.2 LEVEL

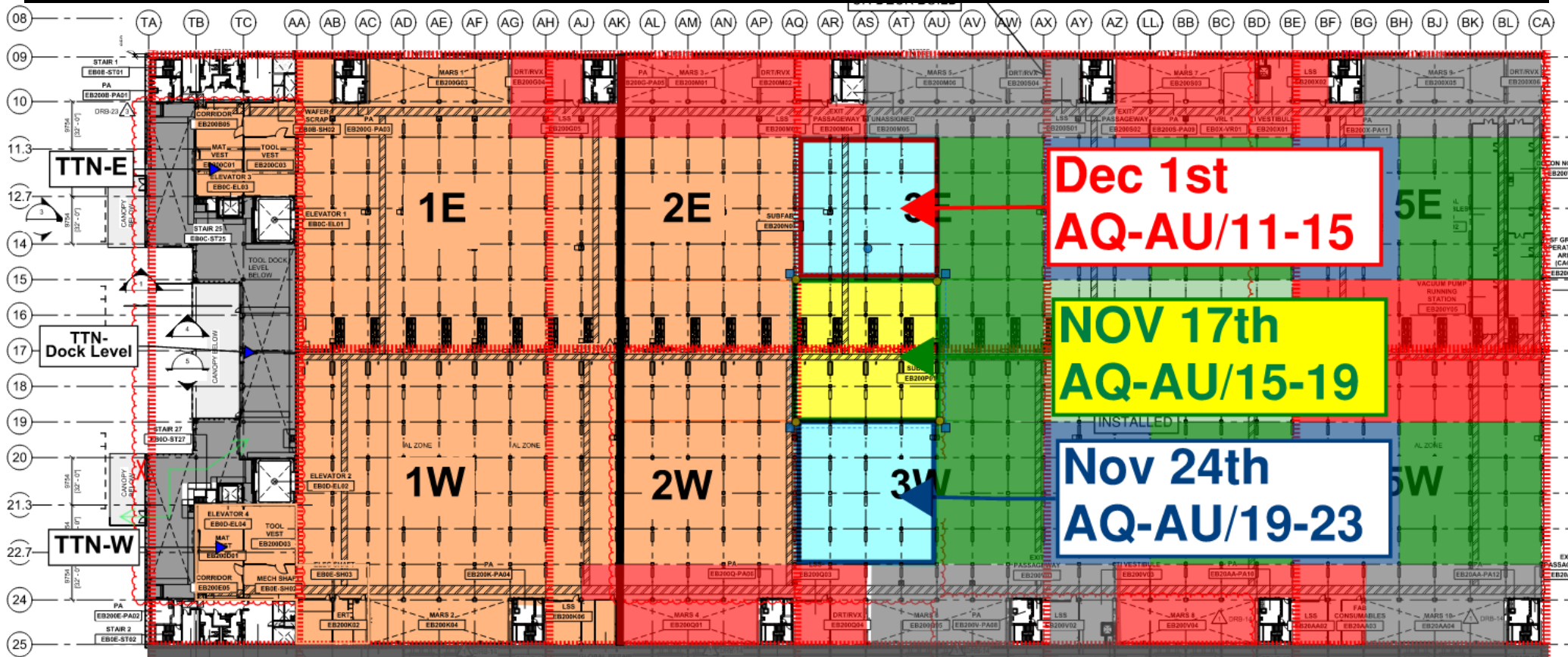




# SUBFAB BUILDOUT MOD 1

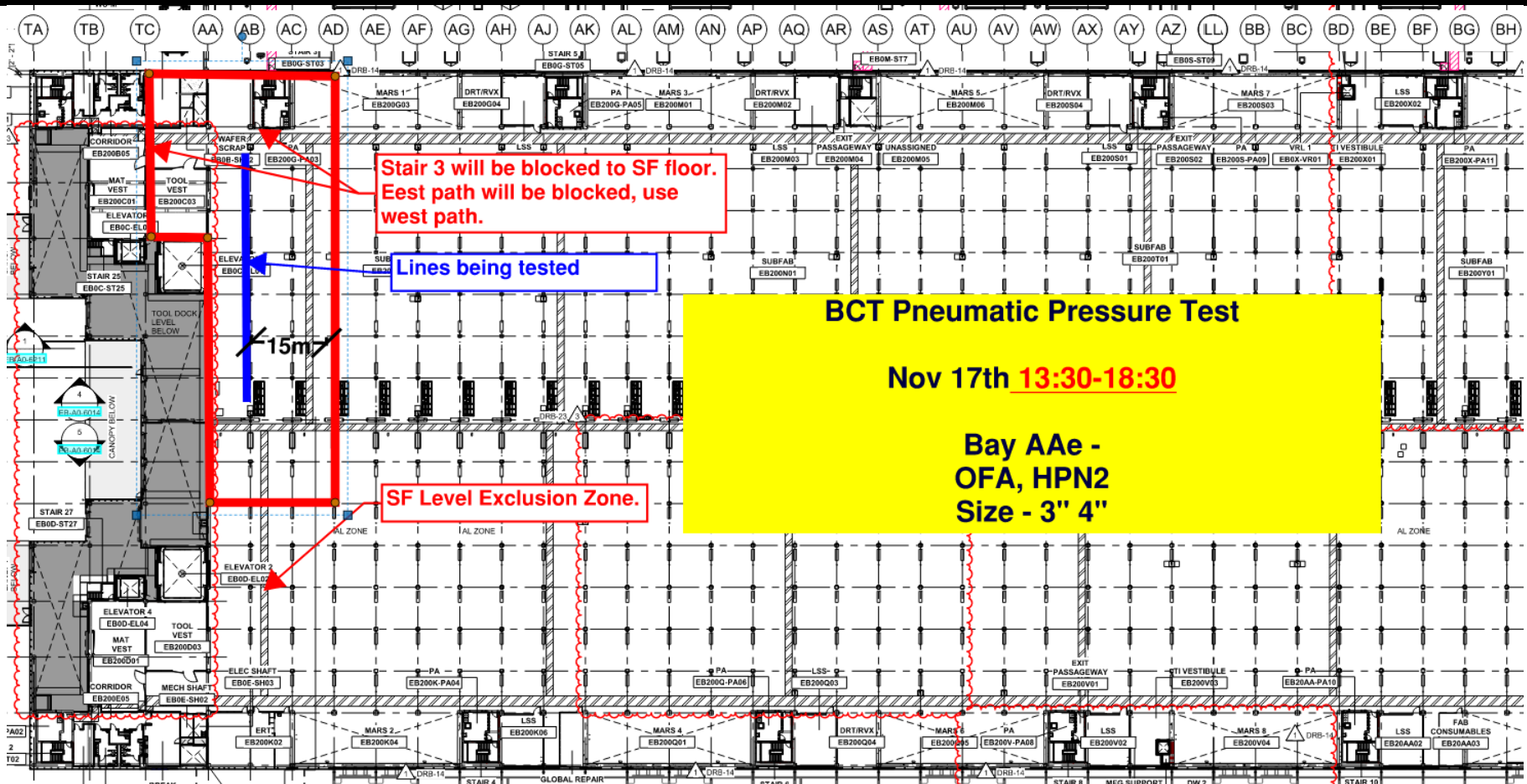


# SUBFAB CRC TOPCOAT

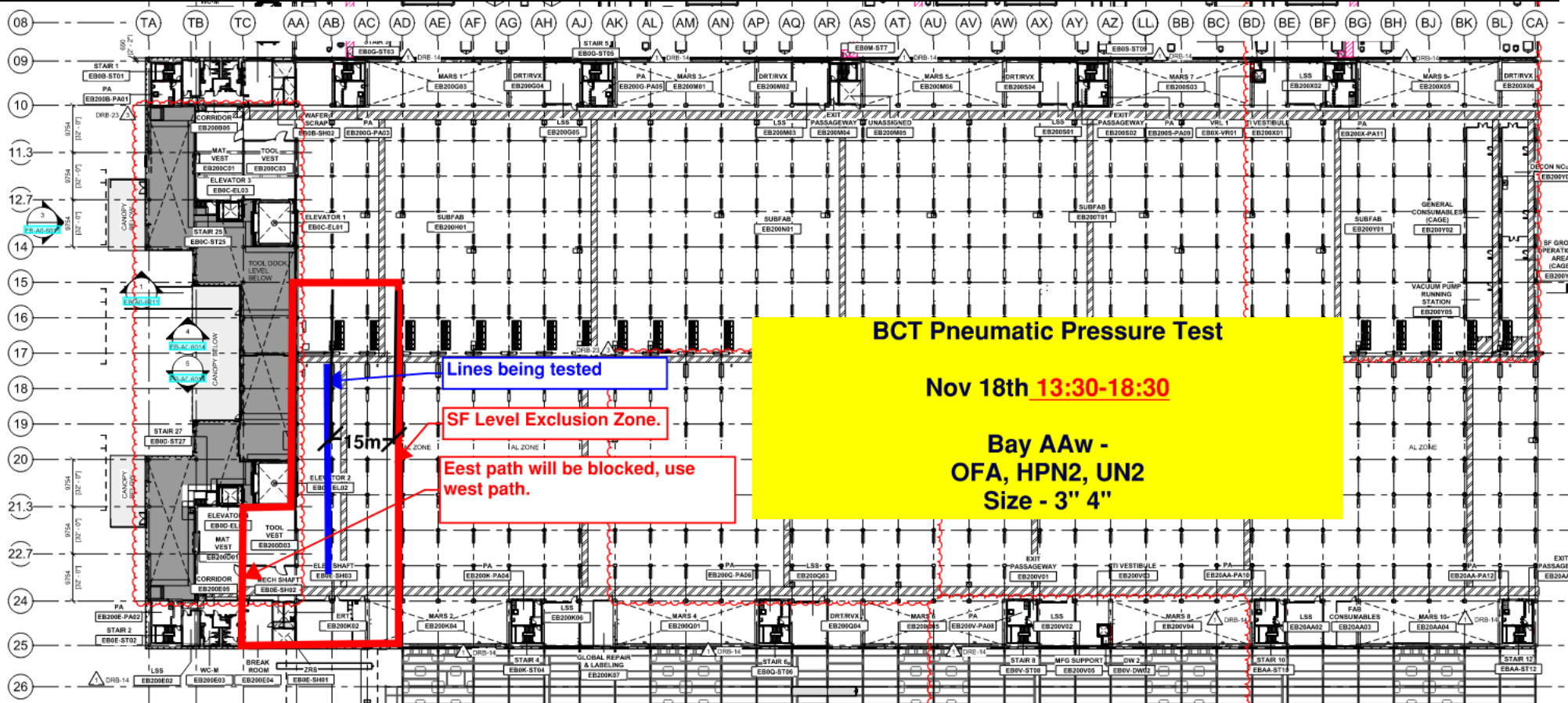




# BCT Pressure Test Today

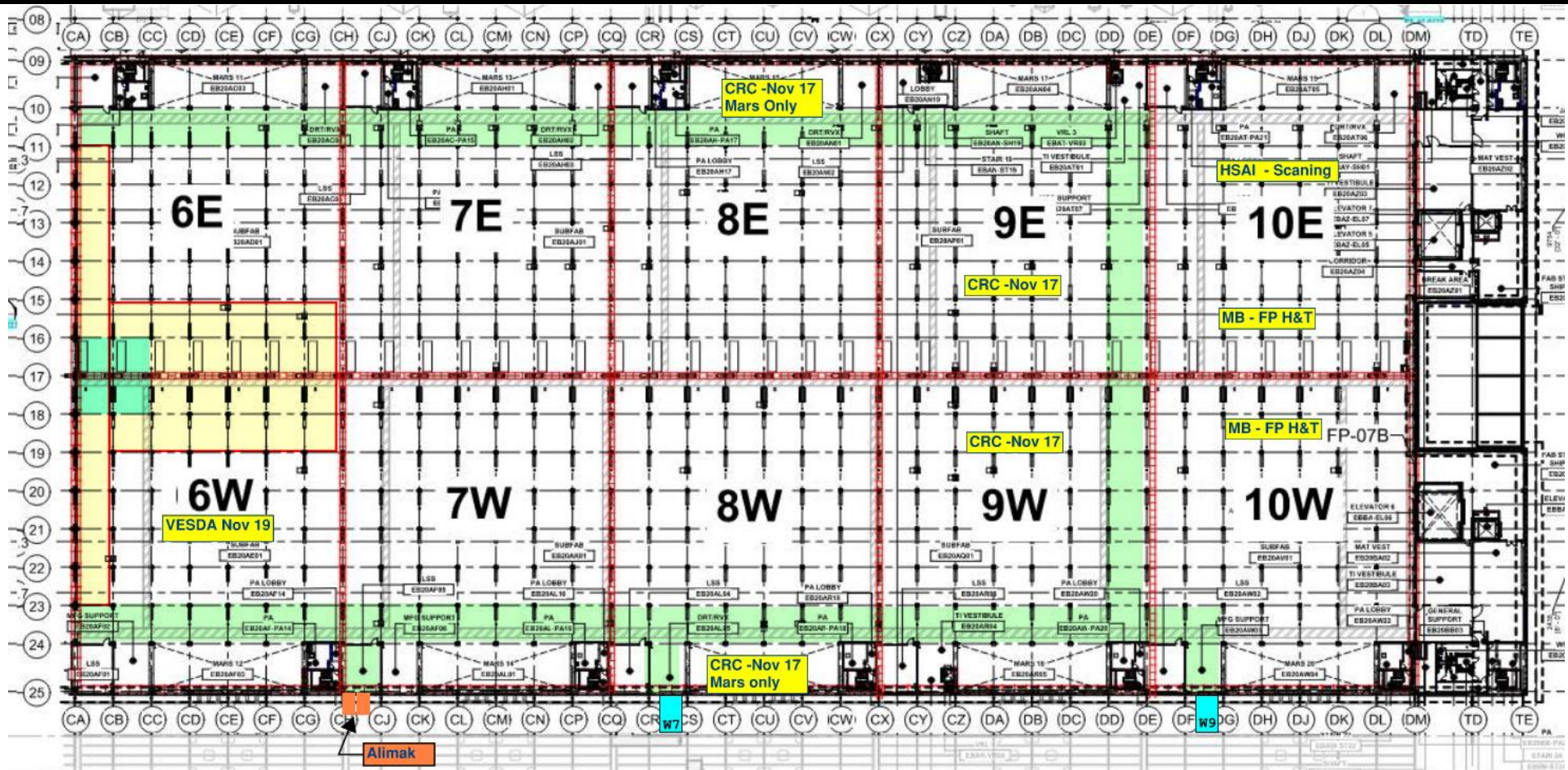


# BCT Pressure Test Tomorrow





# SUBFAB BUILDOUT MOD 2



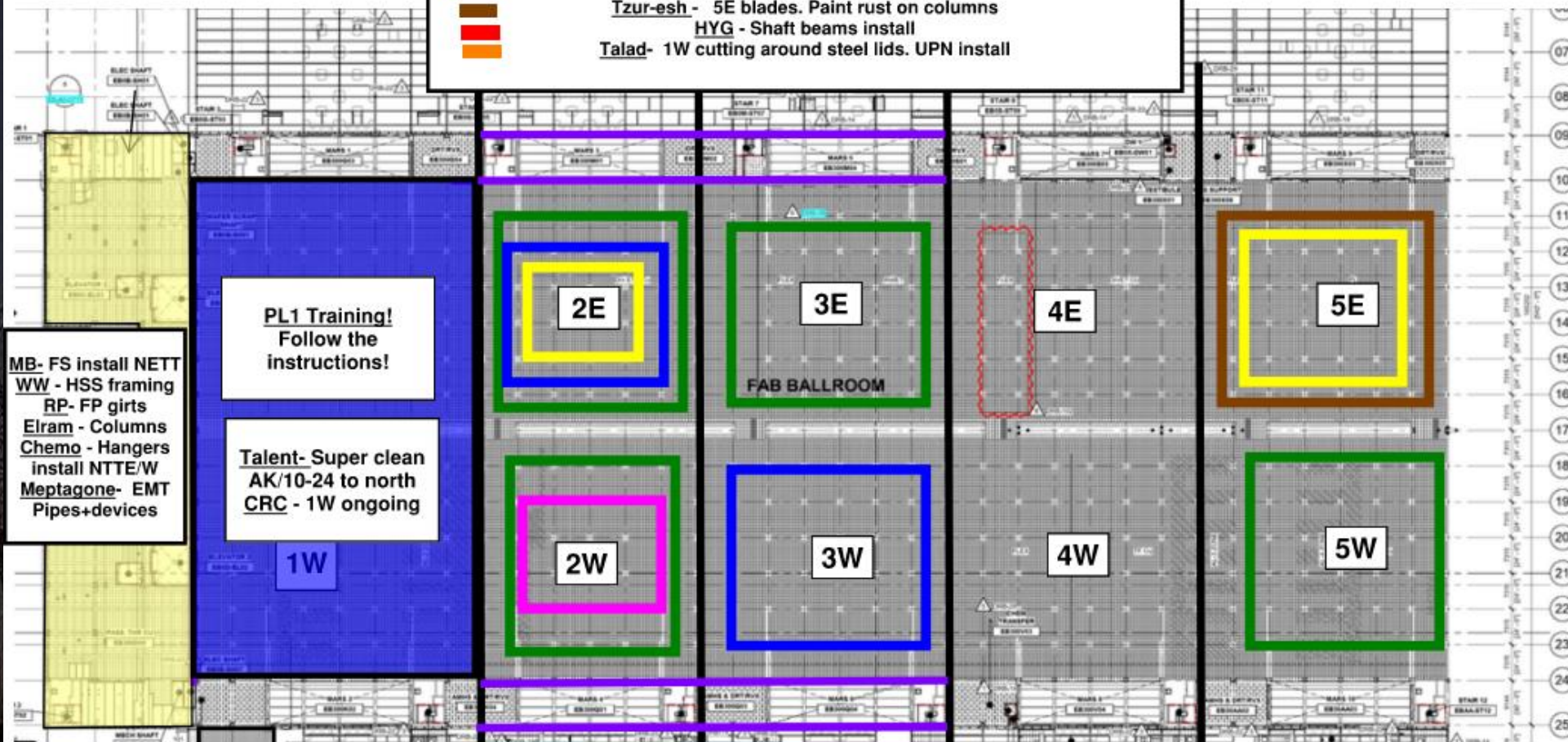




CR level:



Afcon - Cable trays, modules and stickers  
MB - Pipes and drops  
Elram - 9-10,24-25 columns/shaft walls. AA line column wraps  
Meptagon - EMT Pipes+devices. TET/NET devices all areas  
D&P - Rods install, seismic cables  
Tzur-esh - 5E blades. Paint rust on columns  
HYG - Shaft beams install  
Talad - 1W cutting around steel lids. UPN install



MB - FS install NETT  
WW - HSS framing  
RP - FP girts  
Elram - Columns  
Chemo - Hangers  
install NTTE/W  
Meptagone- EMT  
Pipes+devices

**PL1 Training!**  
Follow the  
instructions!

Talent- Super clean  
AK/10-24 to north  
CRC - 1W ongoing

**1W**

**2E**

**3E**

FAB BALLROOM

**4E**

**5E**

**2W**

**3W**

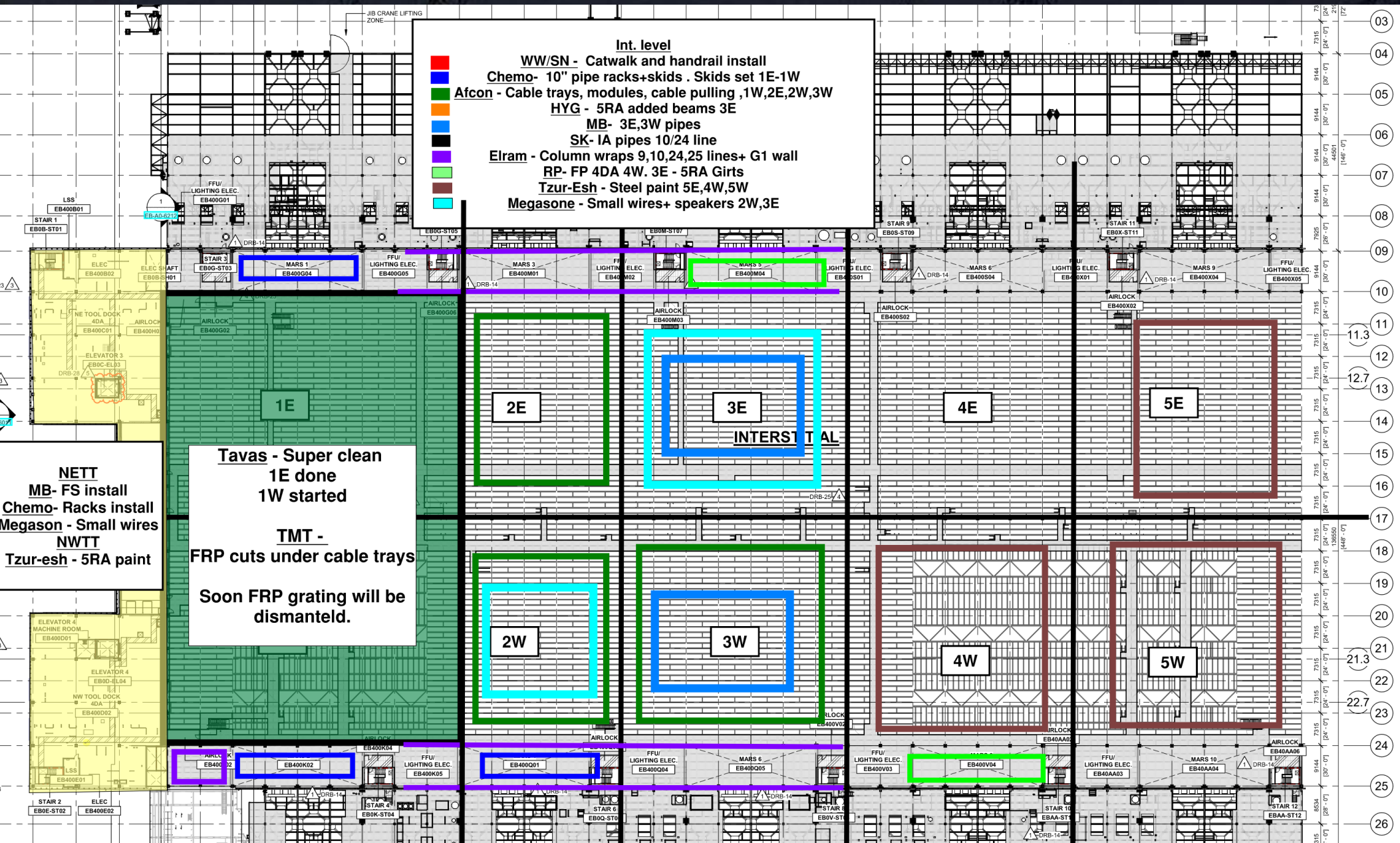
**4W**

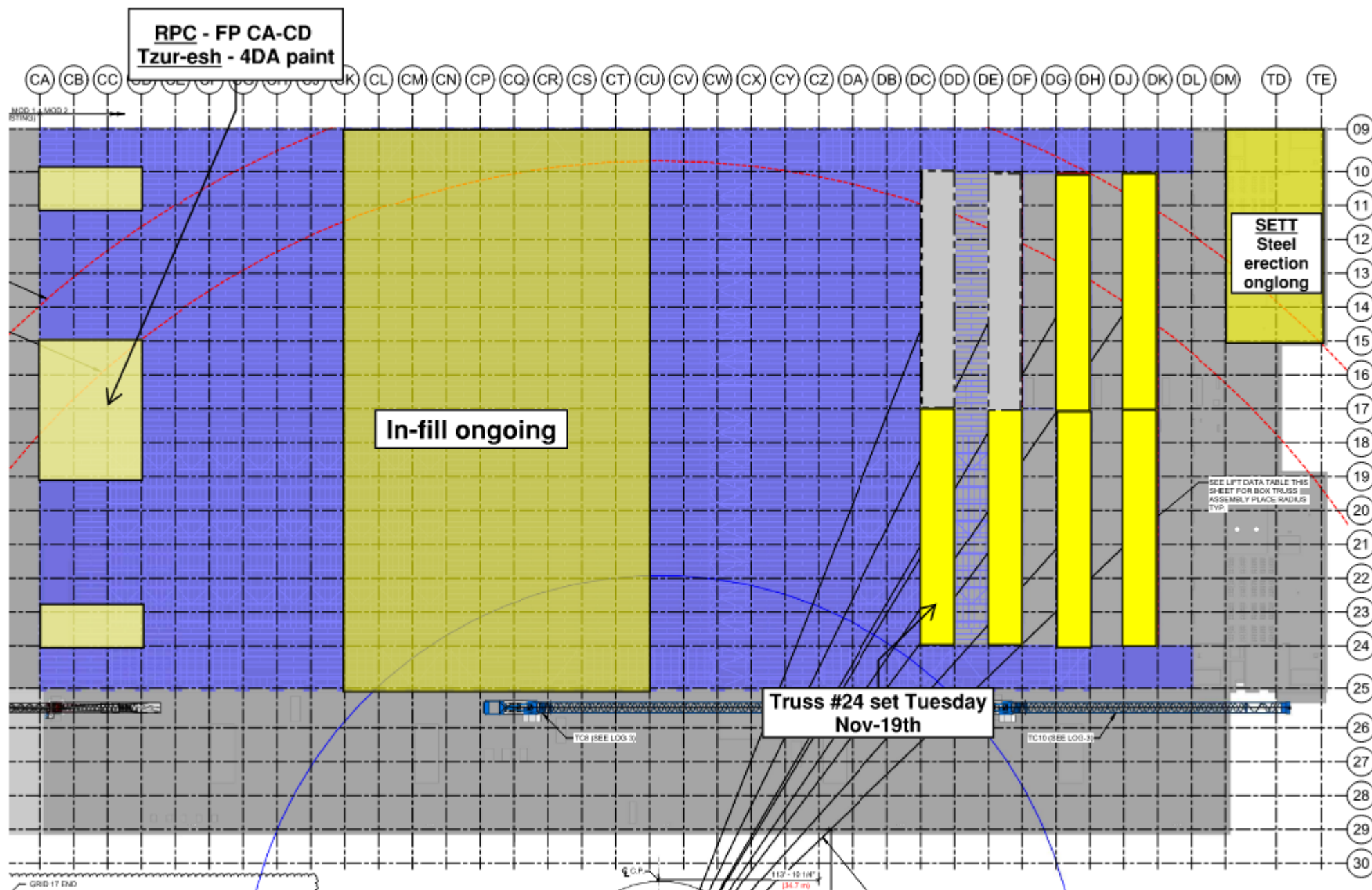
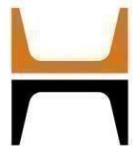
**5W**

Link

Pach-Taas – exhaust duct install and tie in  
SIG- Mobile scaffold install  
Afcon- Rack install  
Newcotech- Temp wall  
Afcon – Cable tray & racks install  
Sela - CRC waiting for QC turnover  
Talad - CRC protection cover





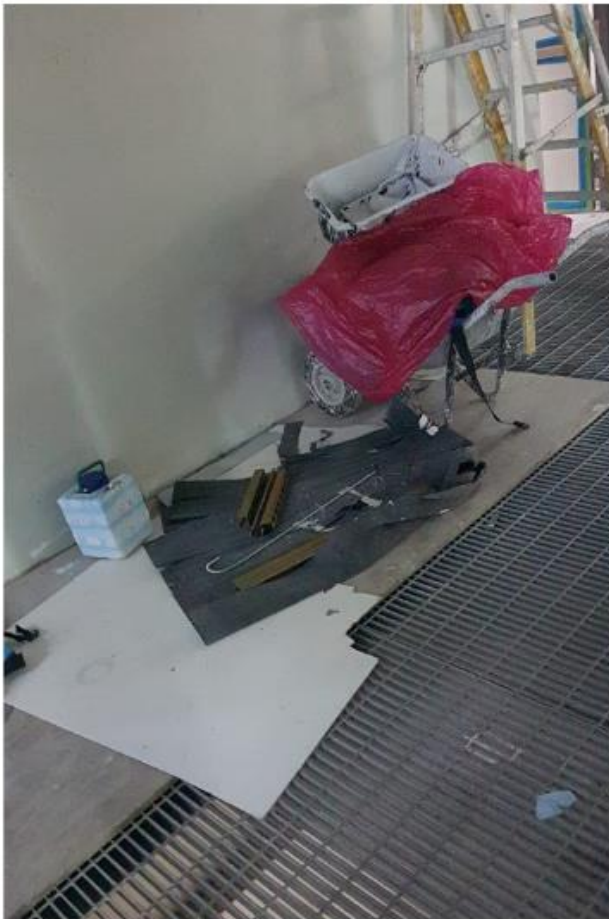






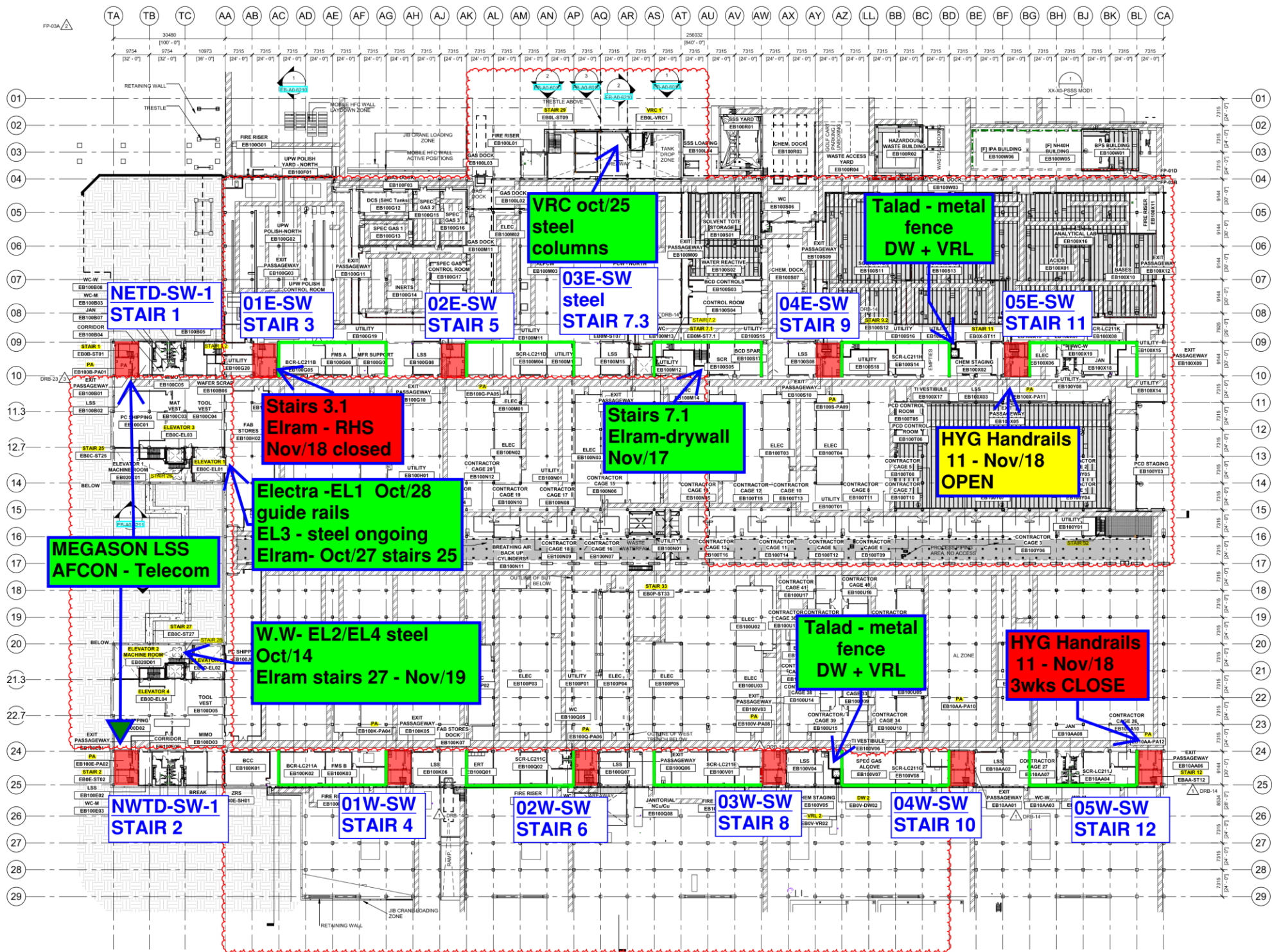
**Clean Room Wall Of Shame**

**Tzur-esh**



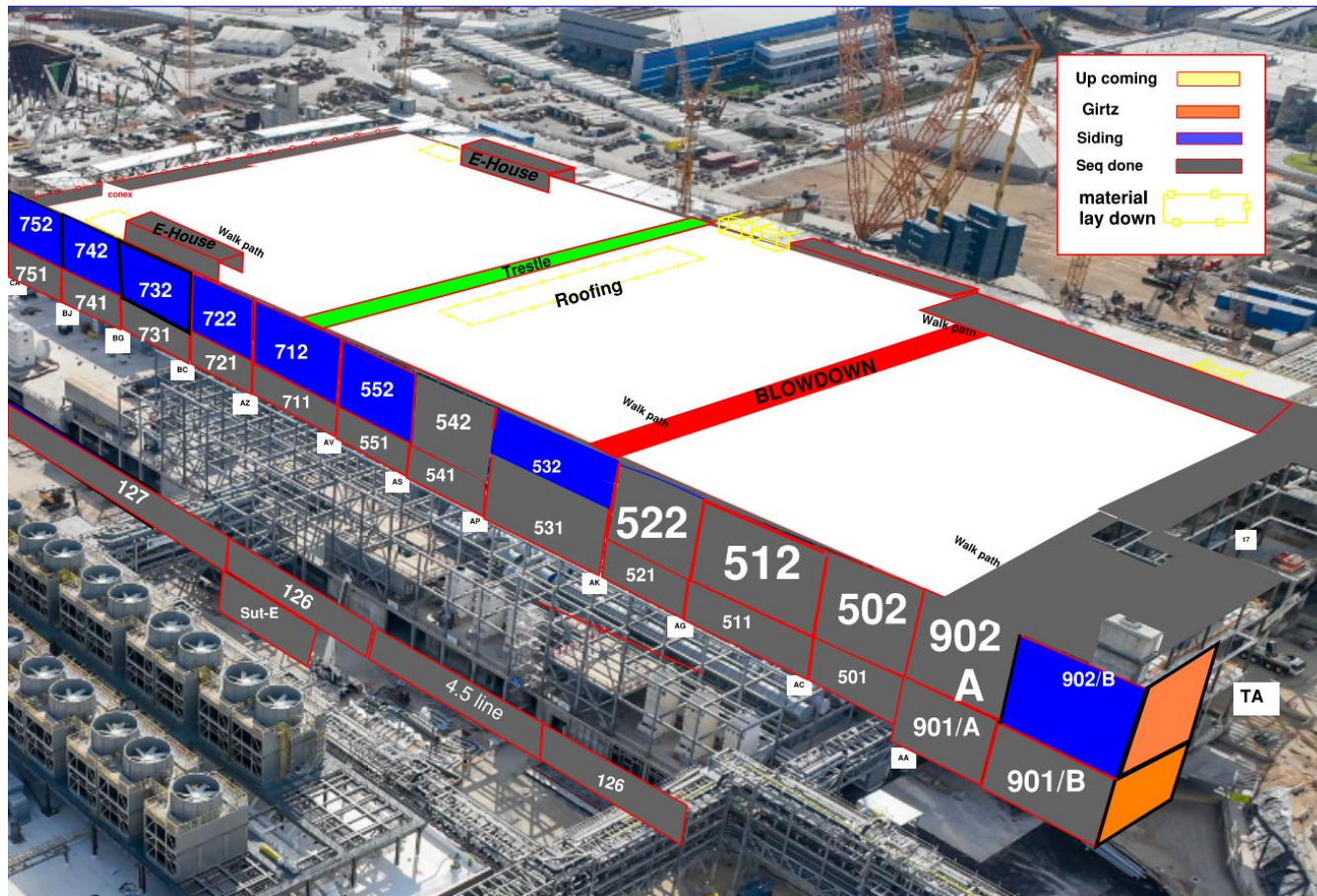
**Elram/TMT**



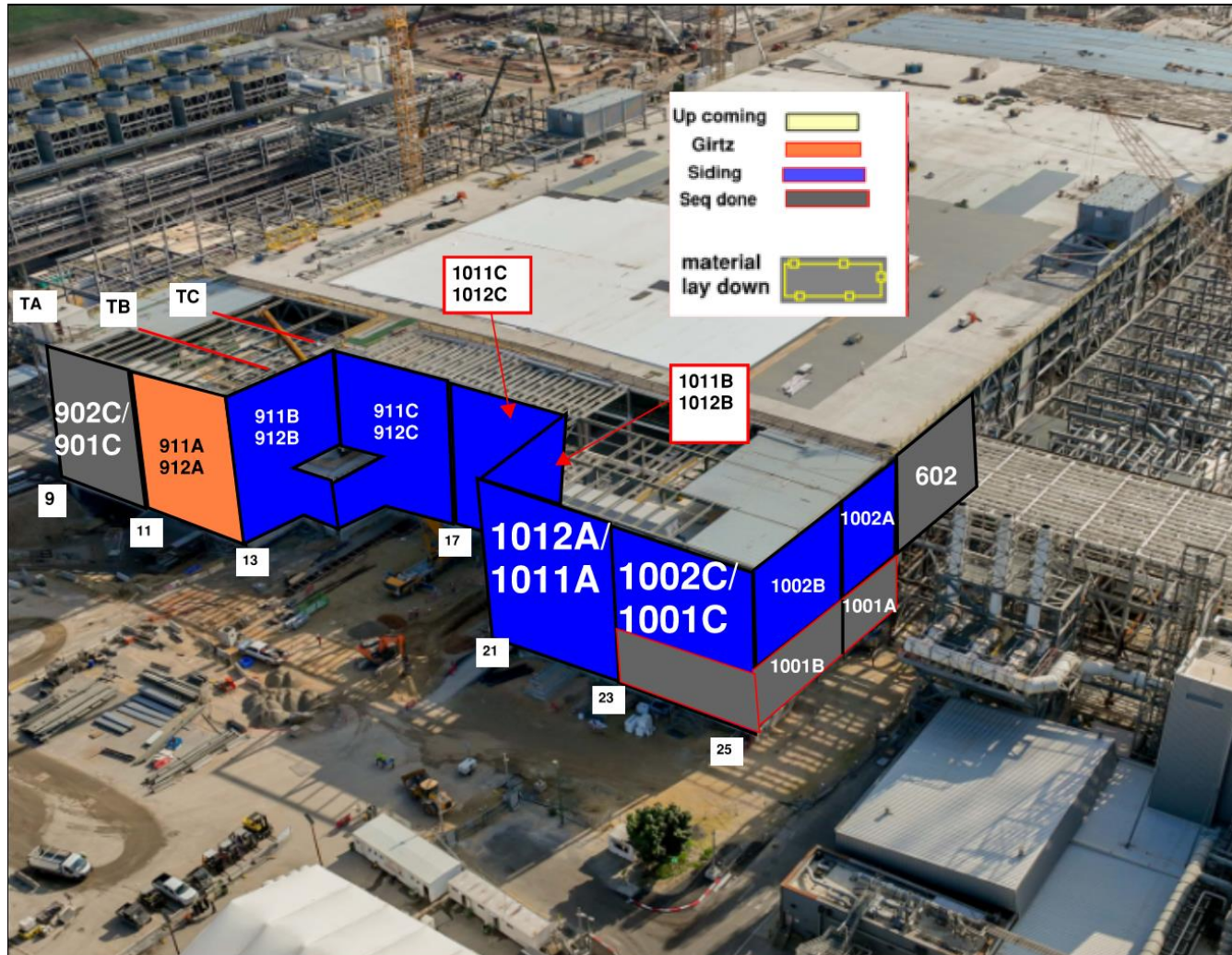


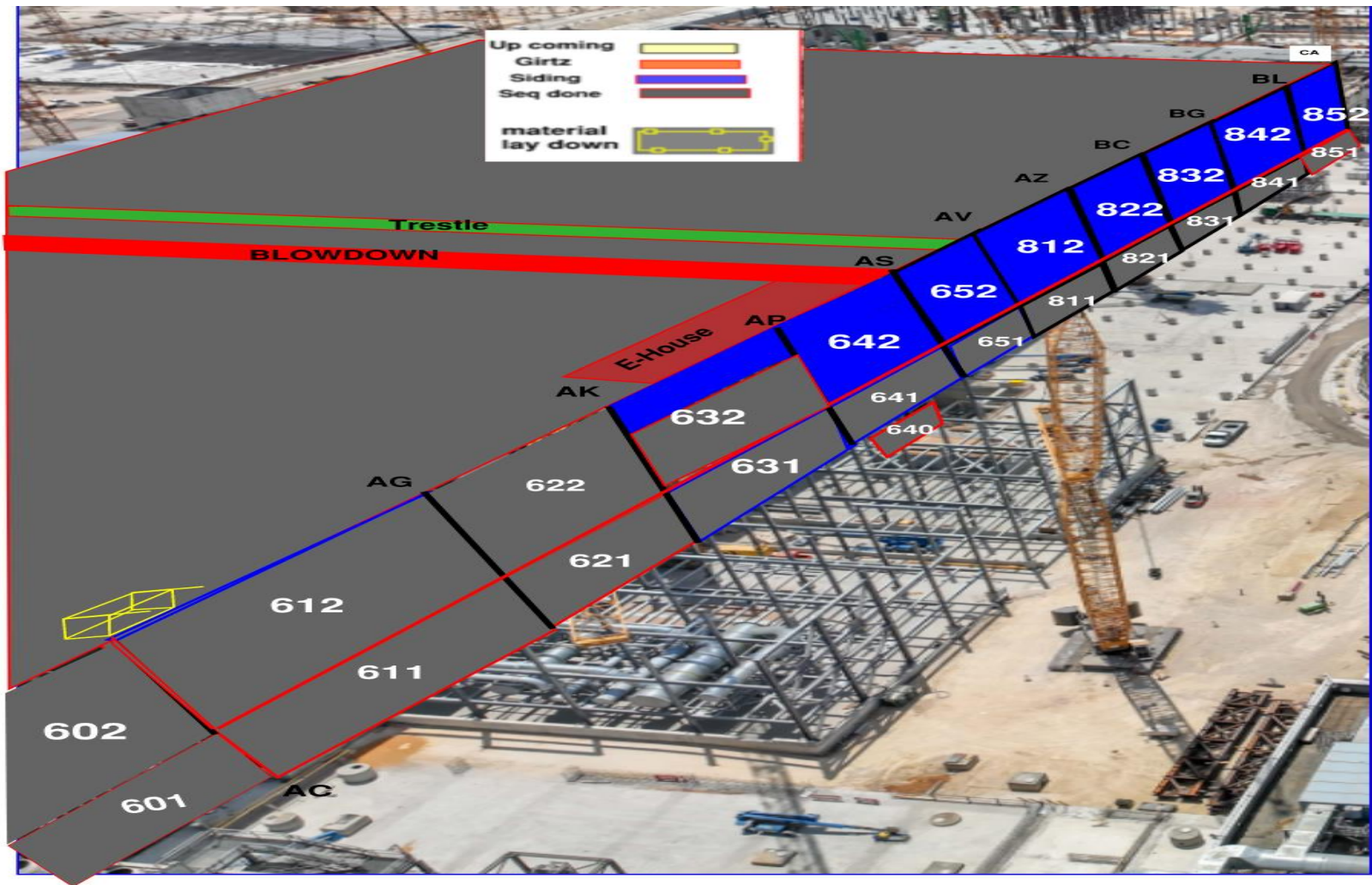








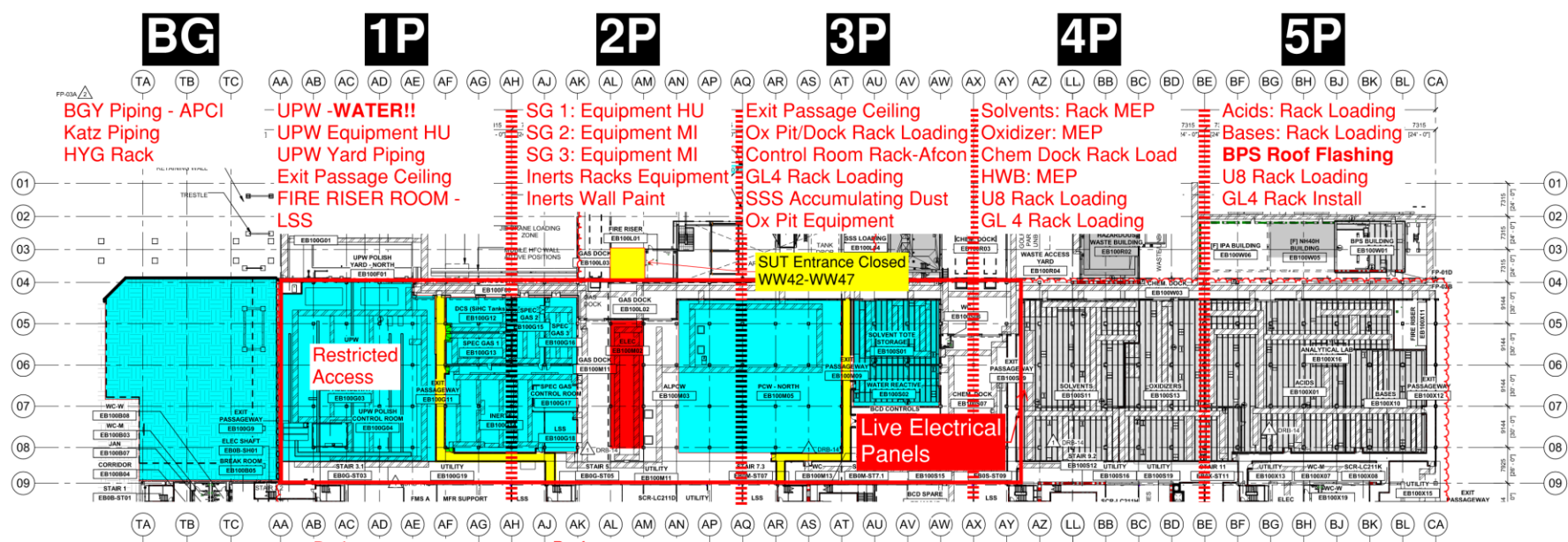




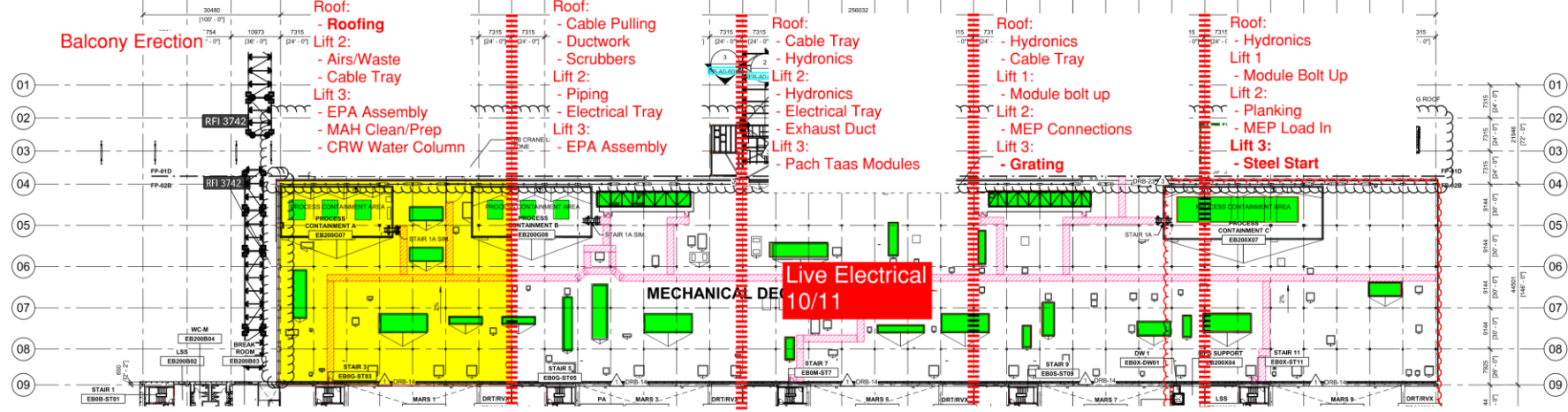


# PSSS.1

## Utility Level 1YA



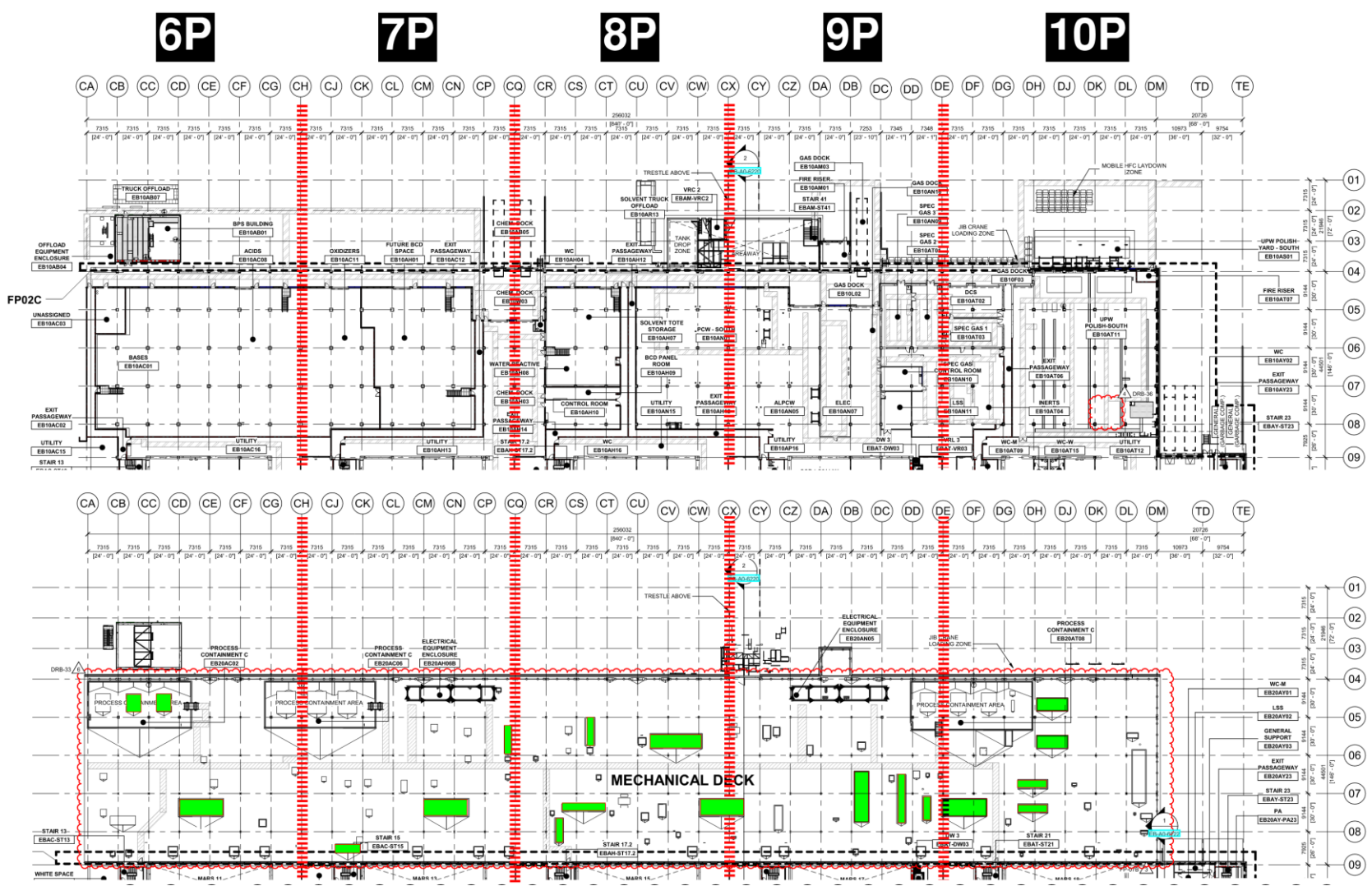
## PSSS Roof 2SA



# PSSS.2

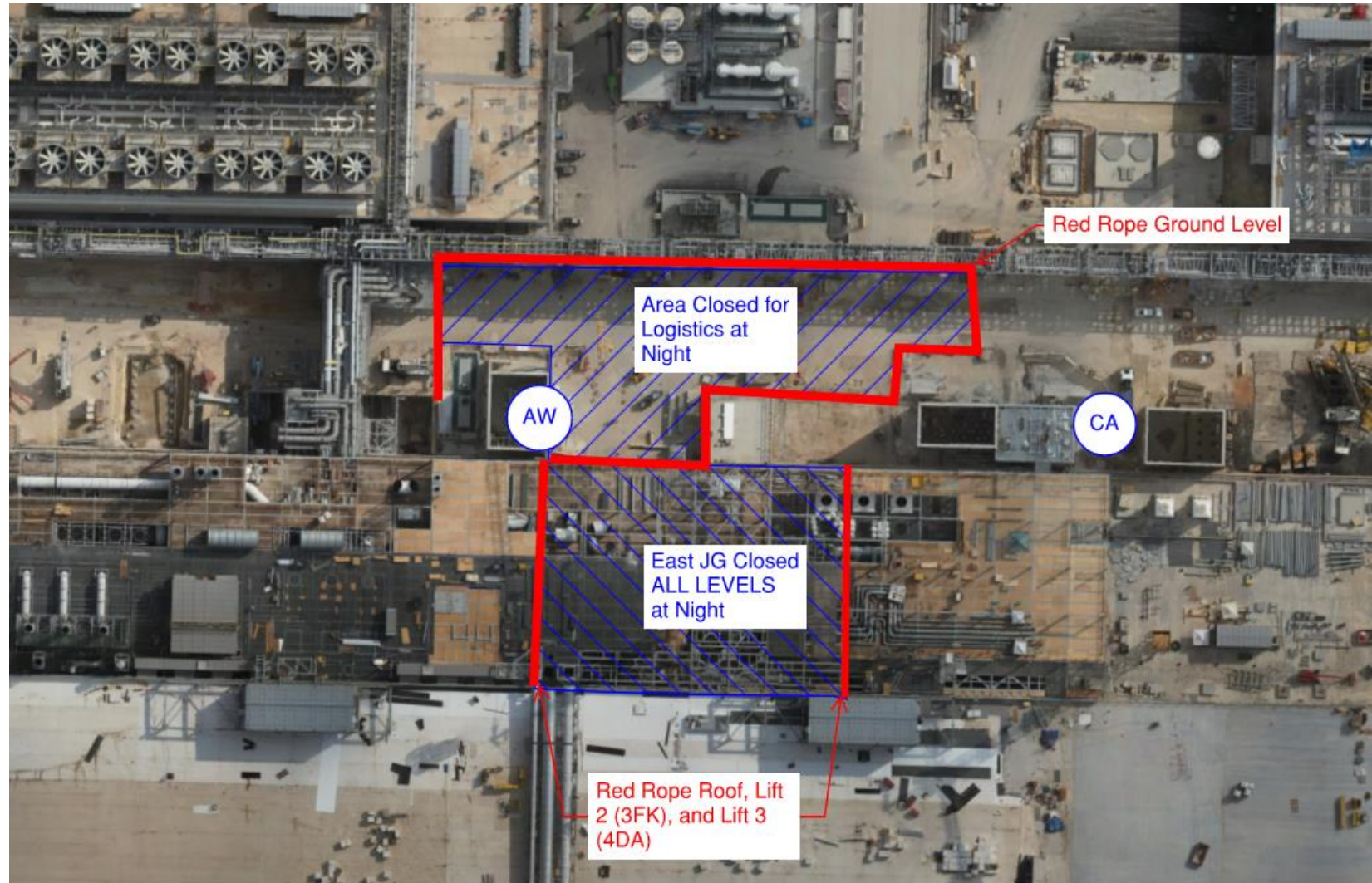
Utility Level  
1YA

PSSS Roof  
2SA



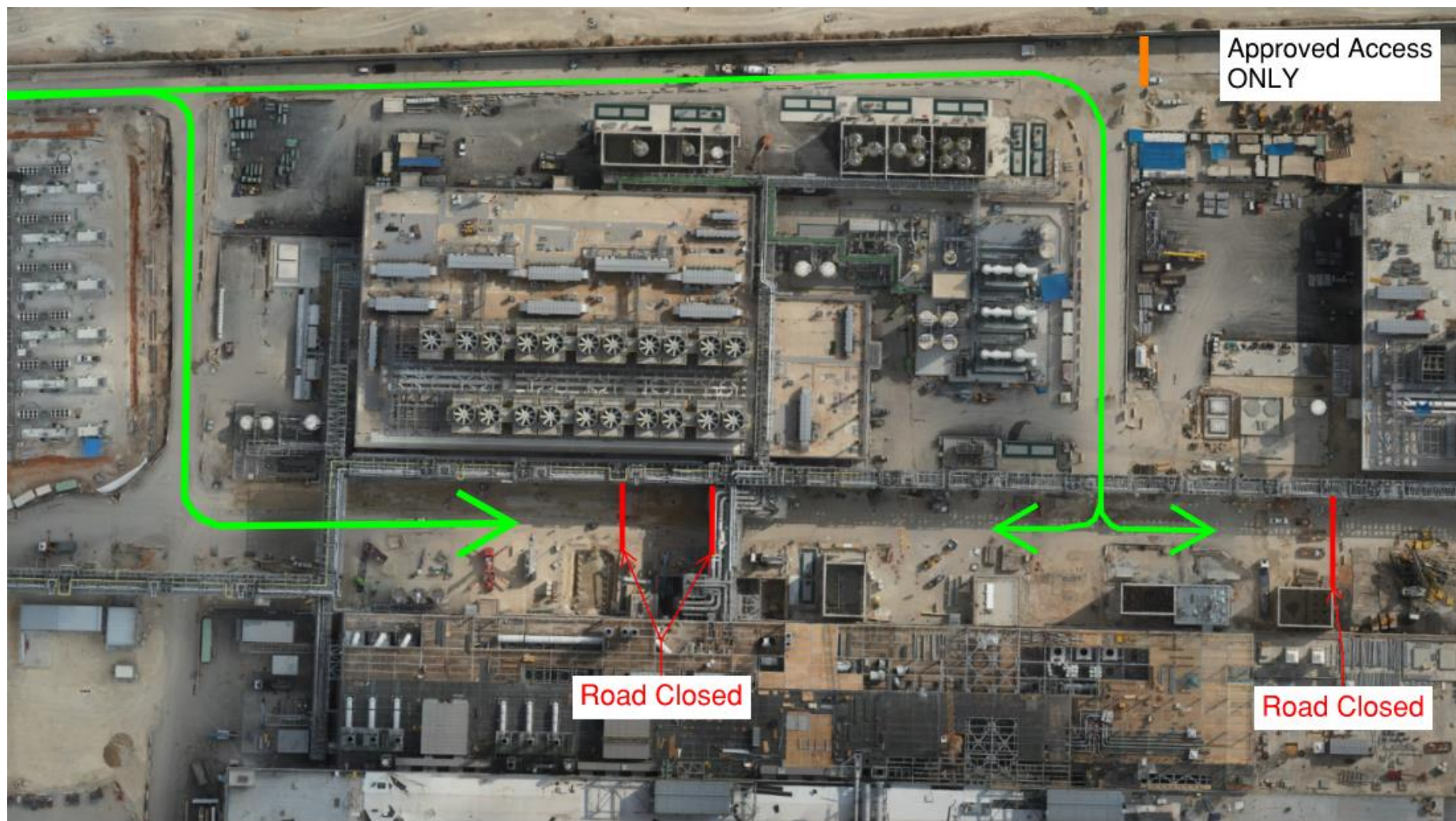


# TC3 Dismantle 14/11 (Nights)



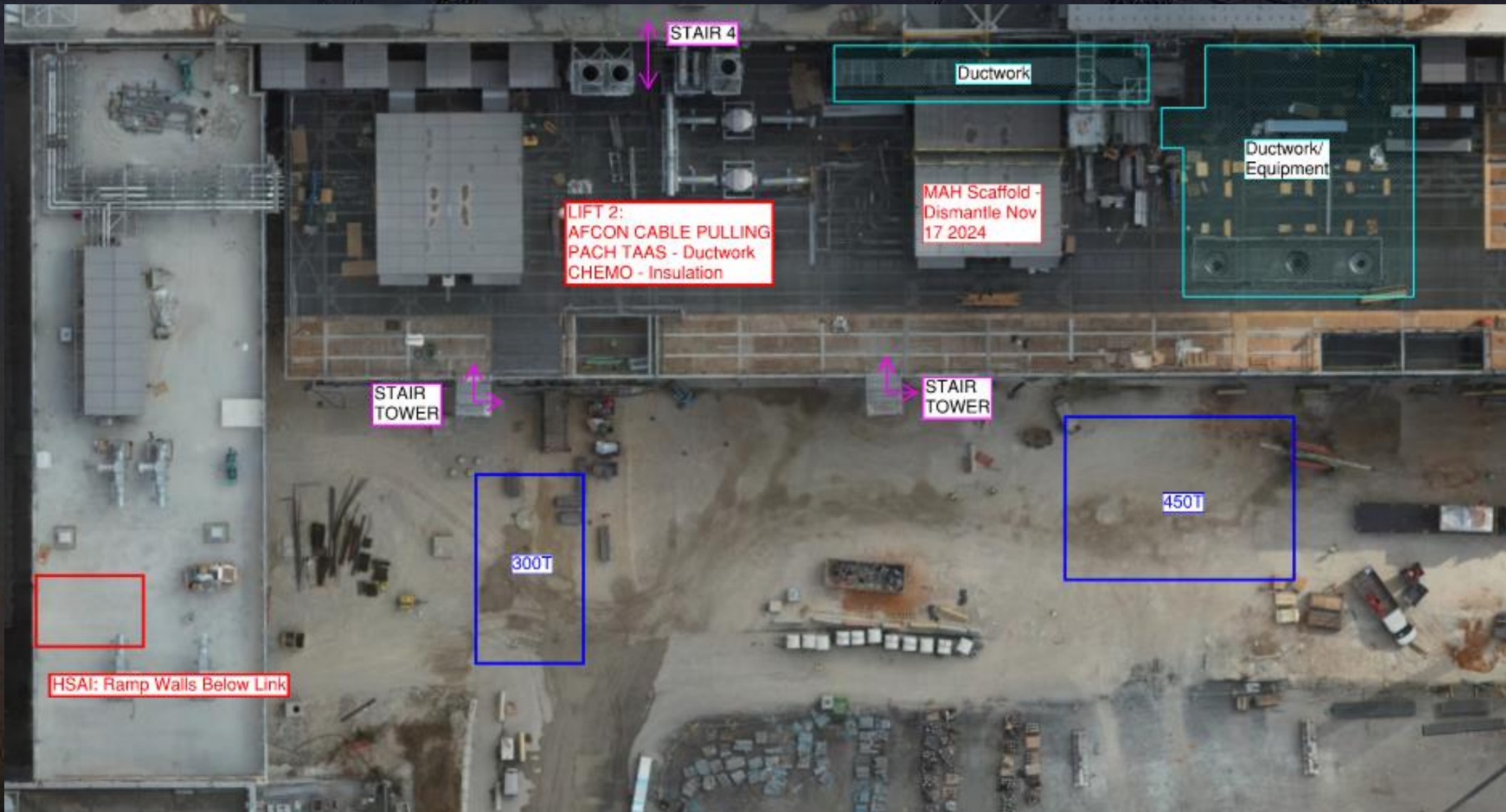


# PSSS Vehicular Access





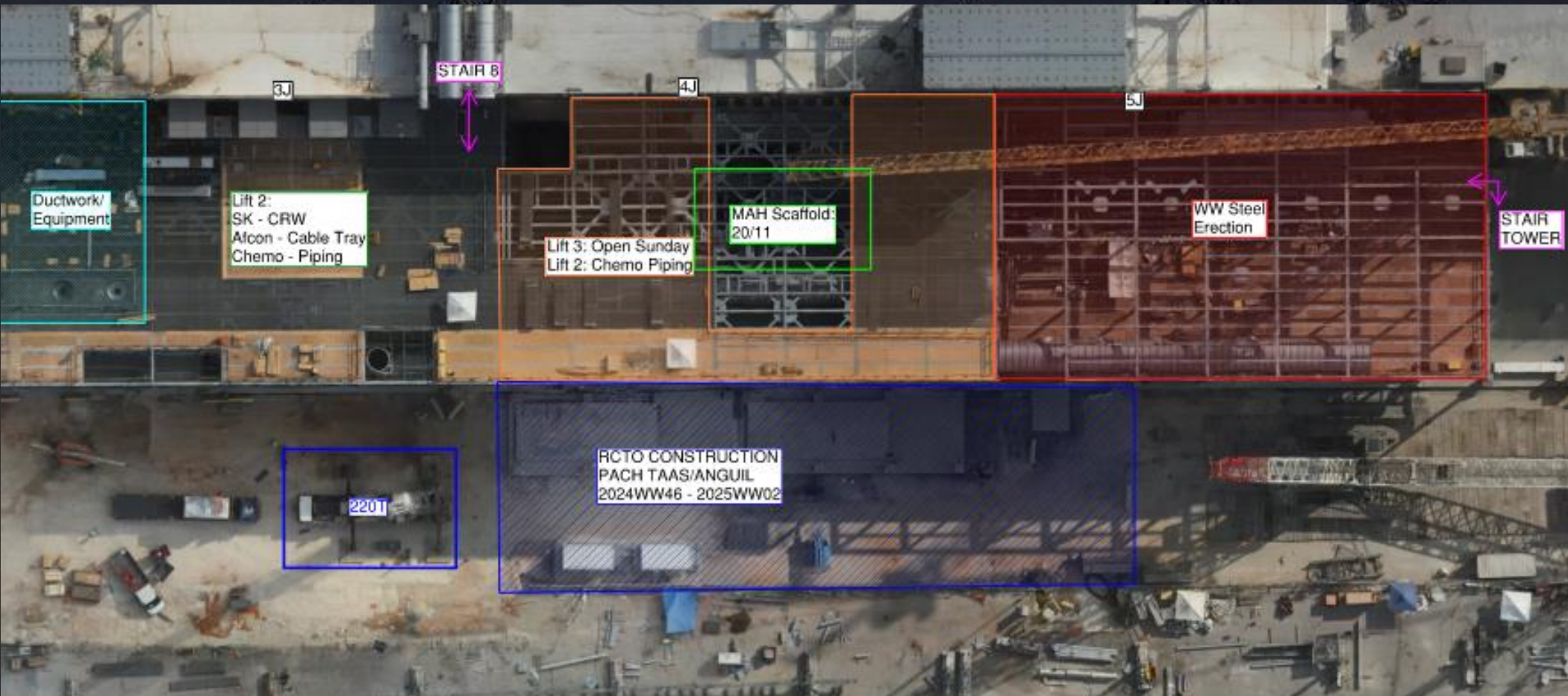
# WJG 01J, 02J LIFT 2 & 3







# WJG 03J, 04J, 05J LIFT 2 & 3

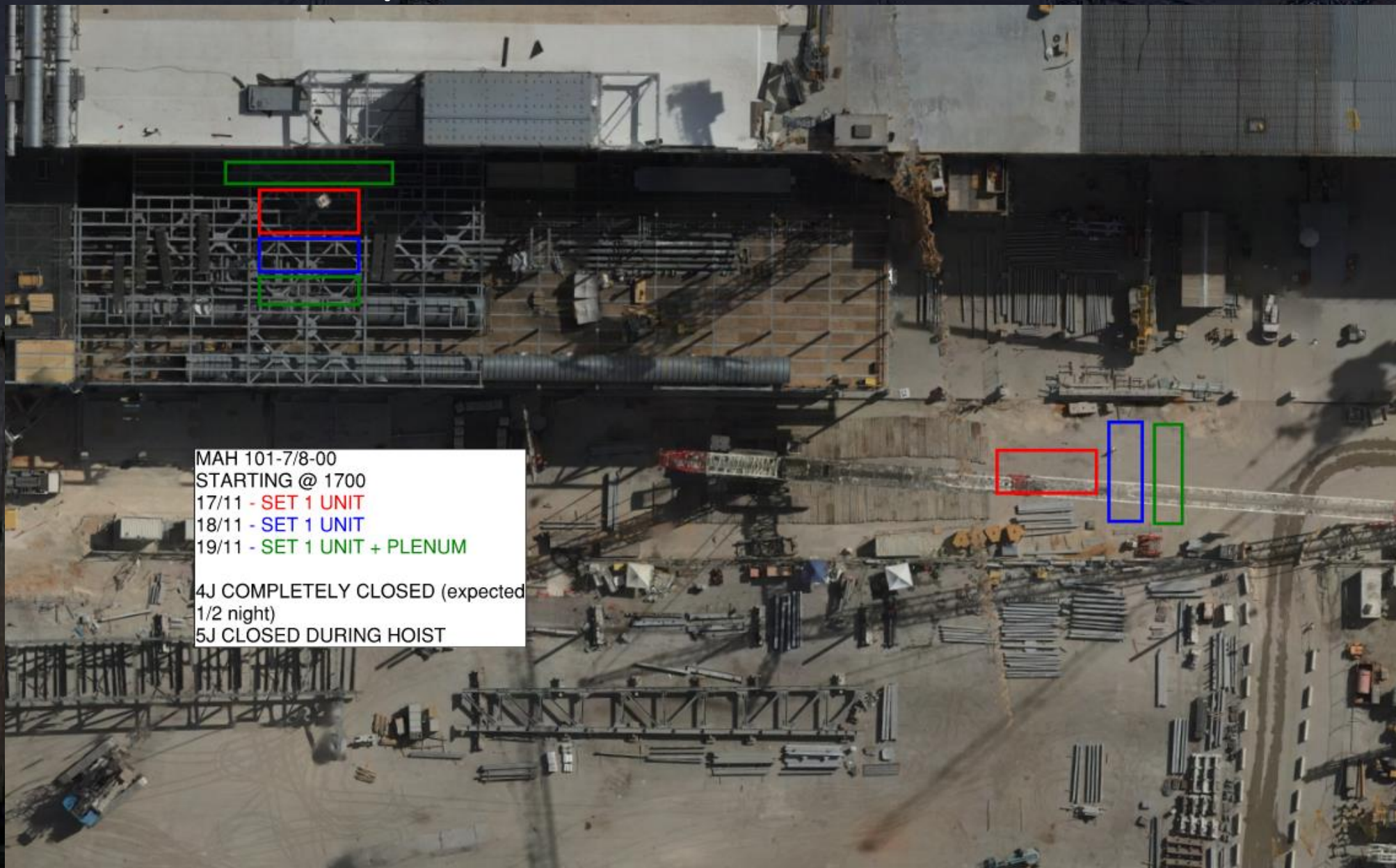






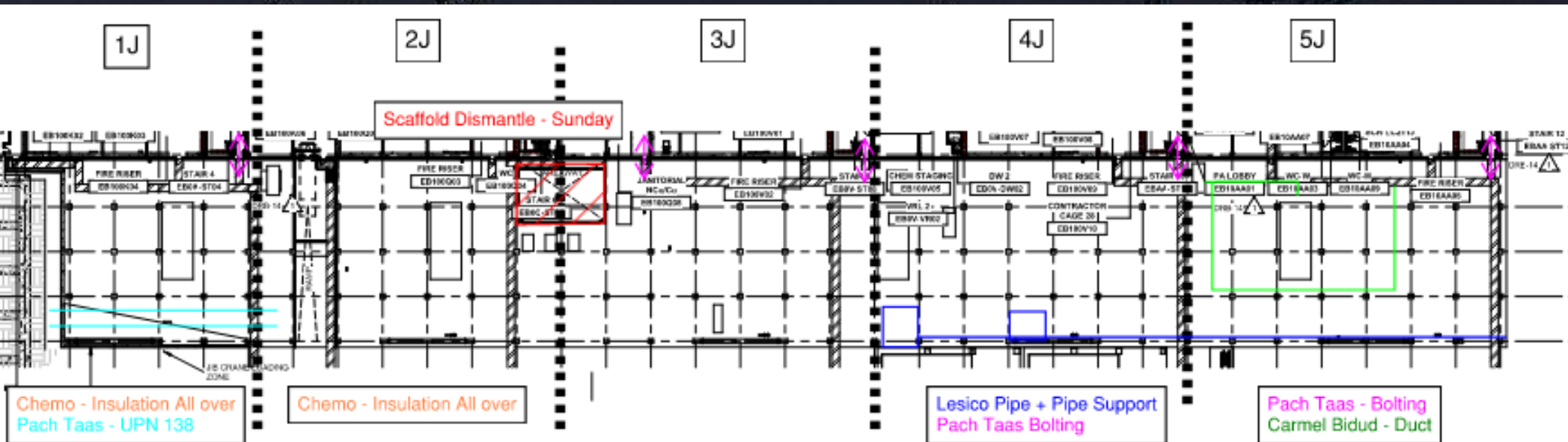
# MAH101-7/8-00 Set WW47

MAH 101-7/8-00  
STARTING @ 1700  
17/11 - SET 1 UNIT  
18/11 - SET 1 UNIT  
19/11 - SET 1 UNIT + PLENUM  
4J COMPLETELY CLOSED (expected  
1/2 night)  
5J CLOSED DURING HOIST

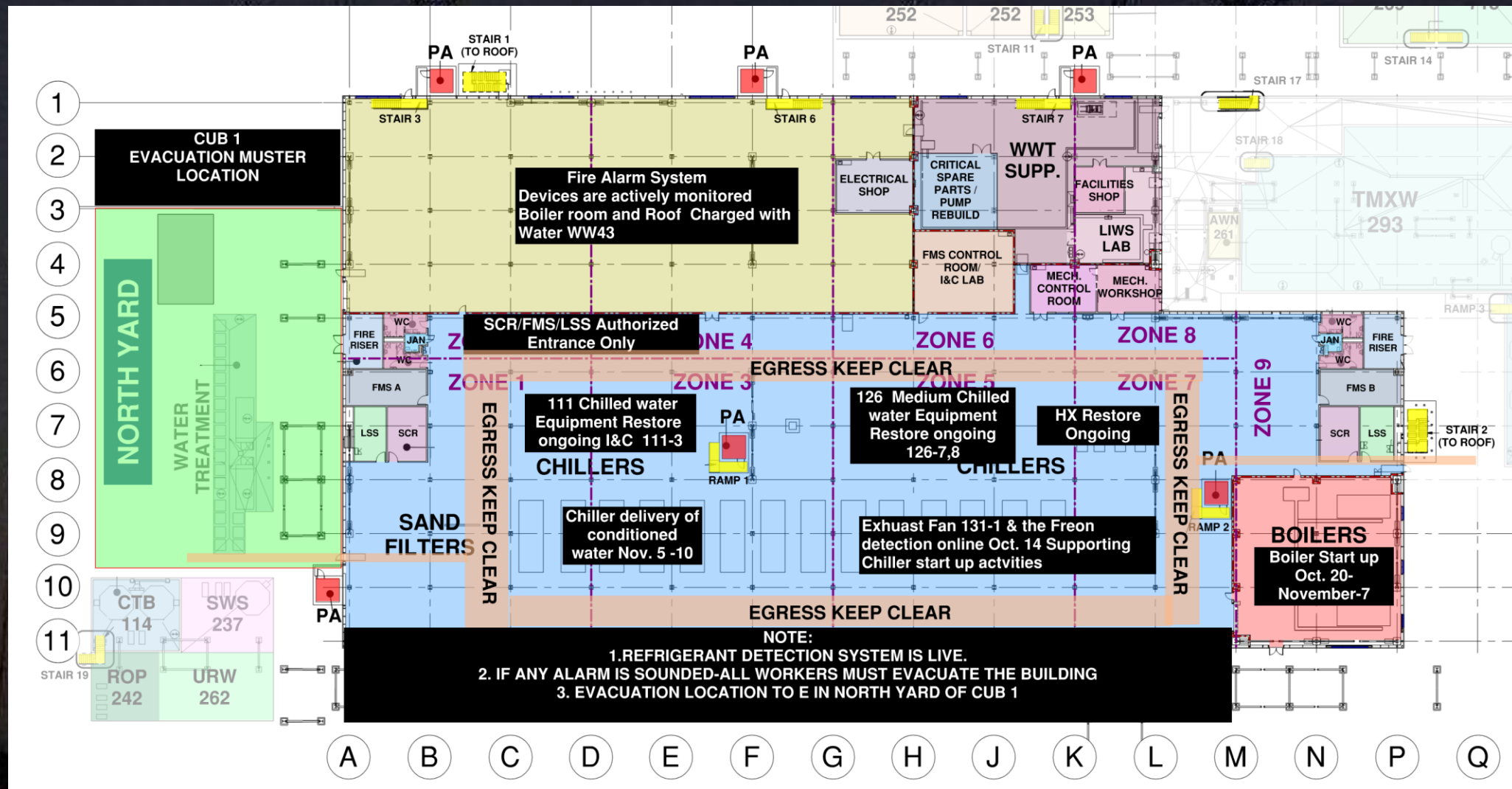




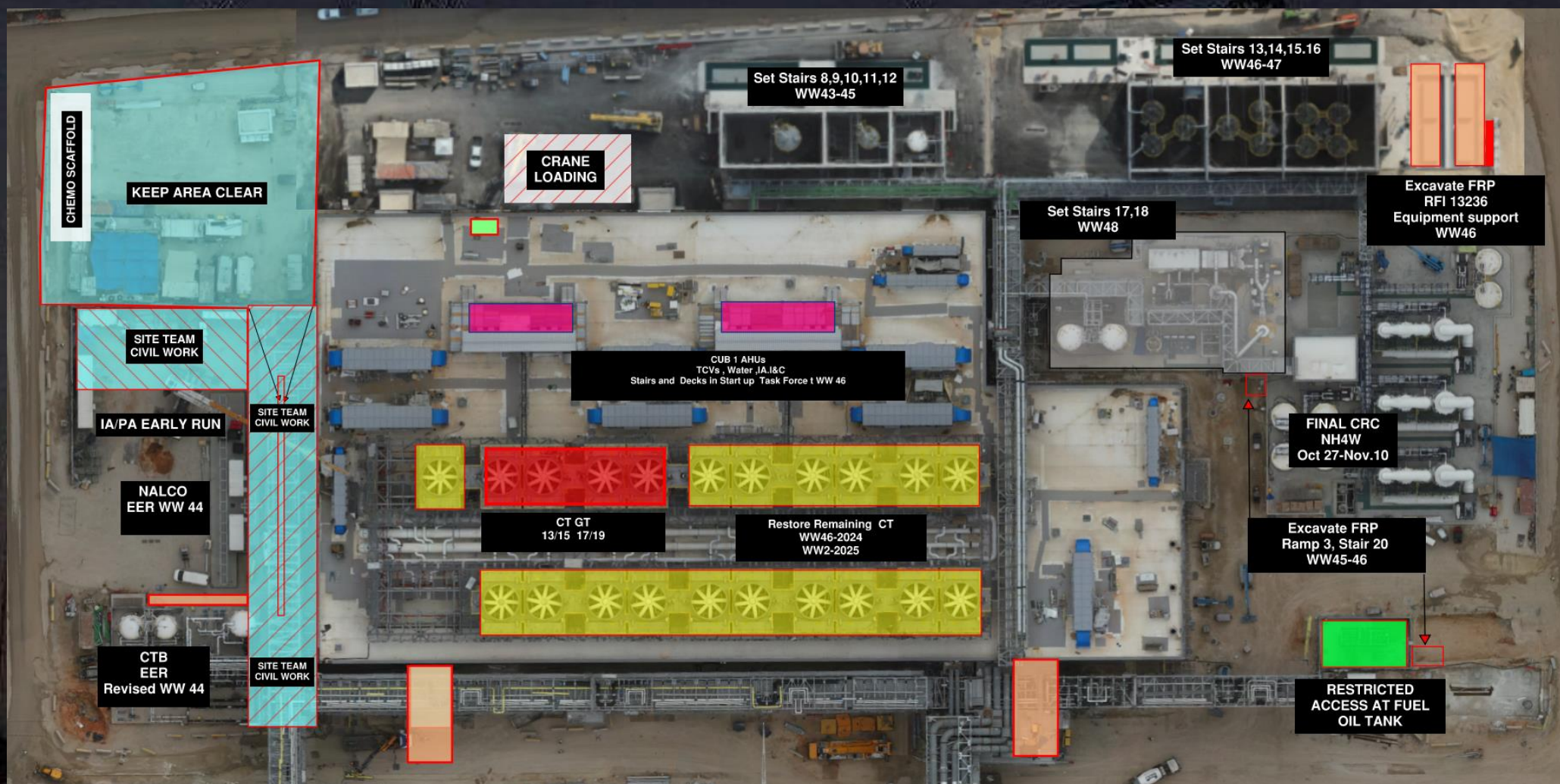
# WJG UTILITY LEVEL BUILD OUT







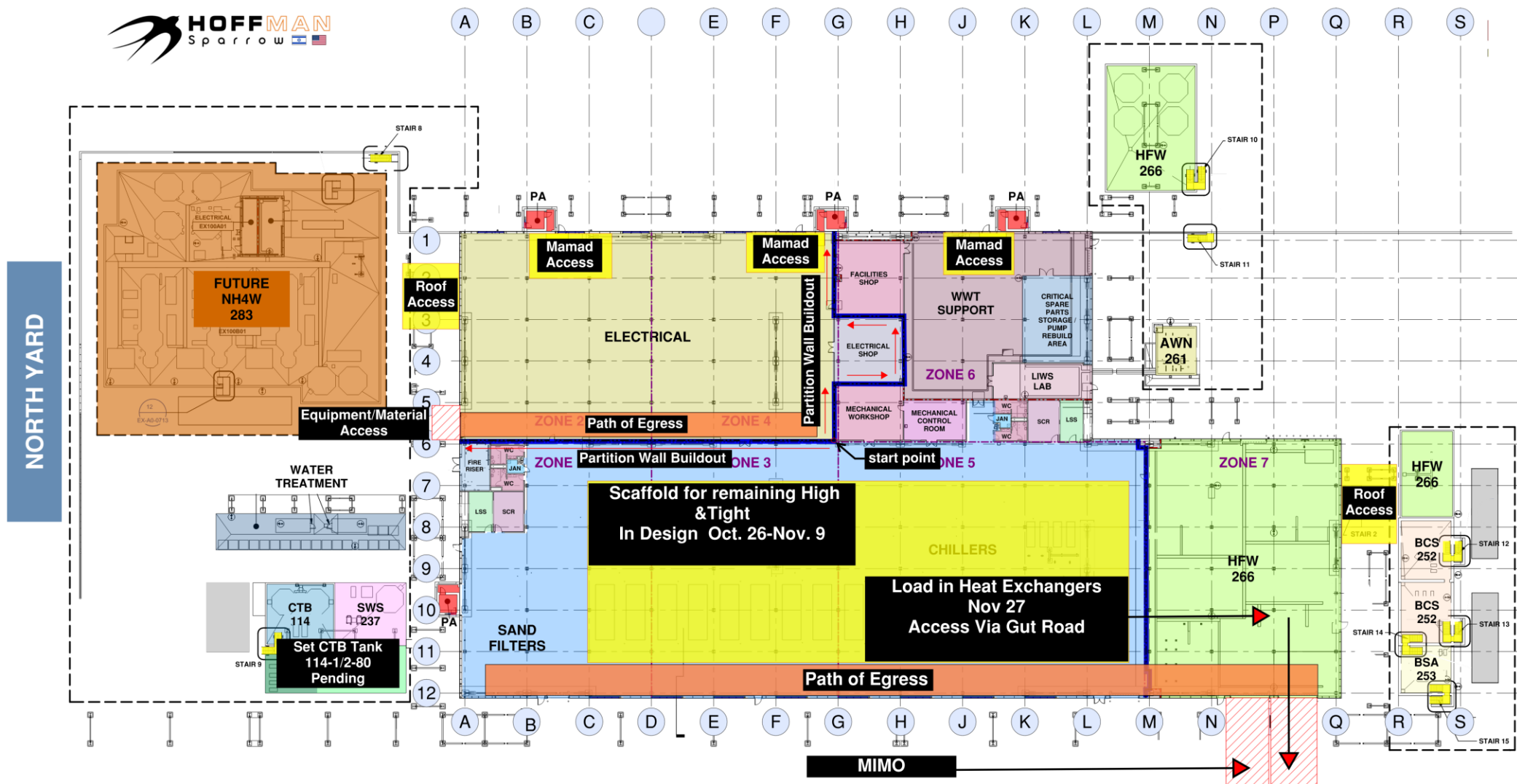
# CUB 1 – EXTERIOR/ROOF



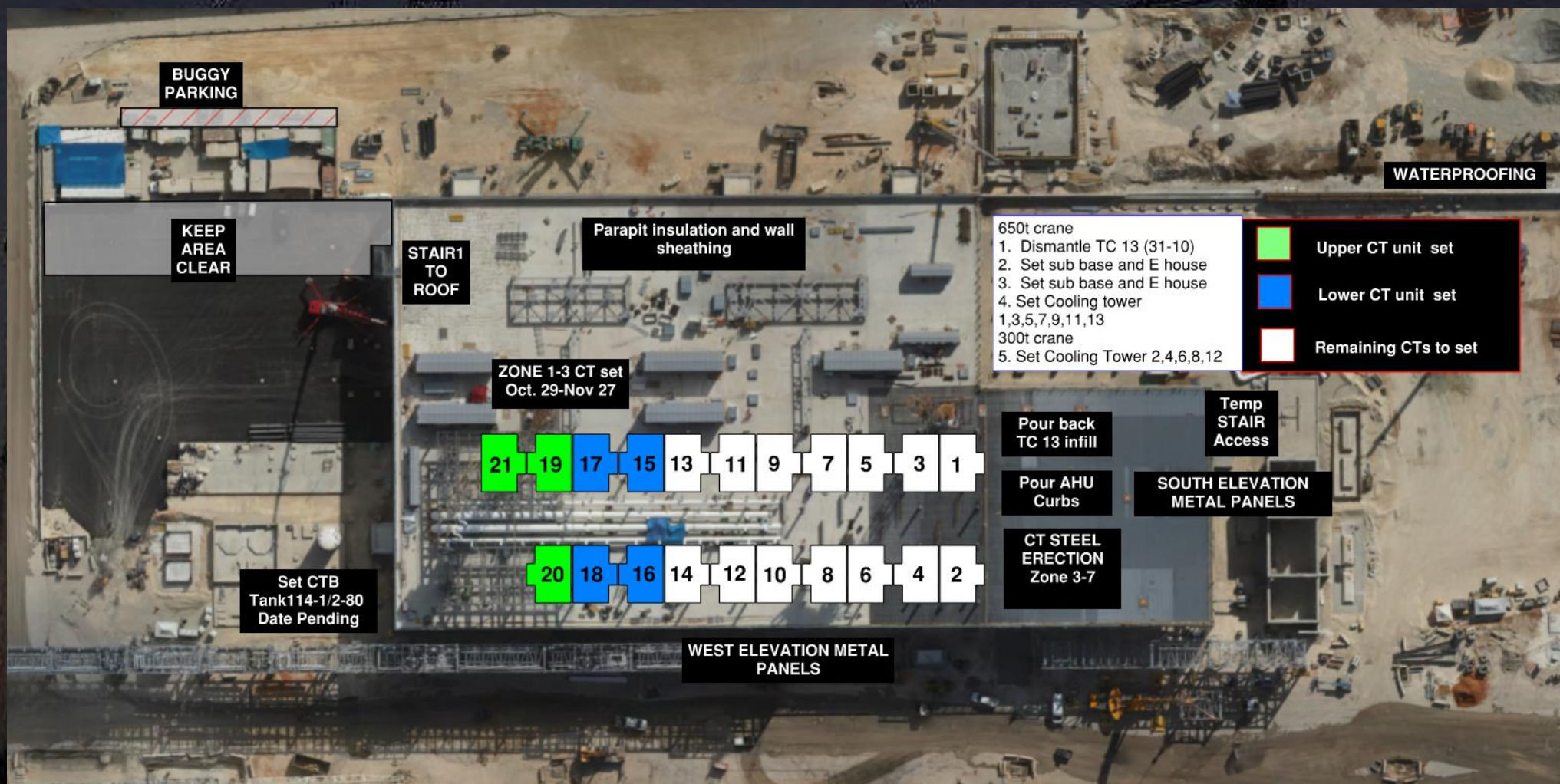


# CUB 2- Load in and H&T

## CUB 2 COORDINATION MAP

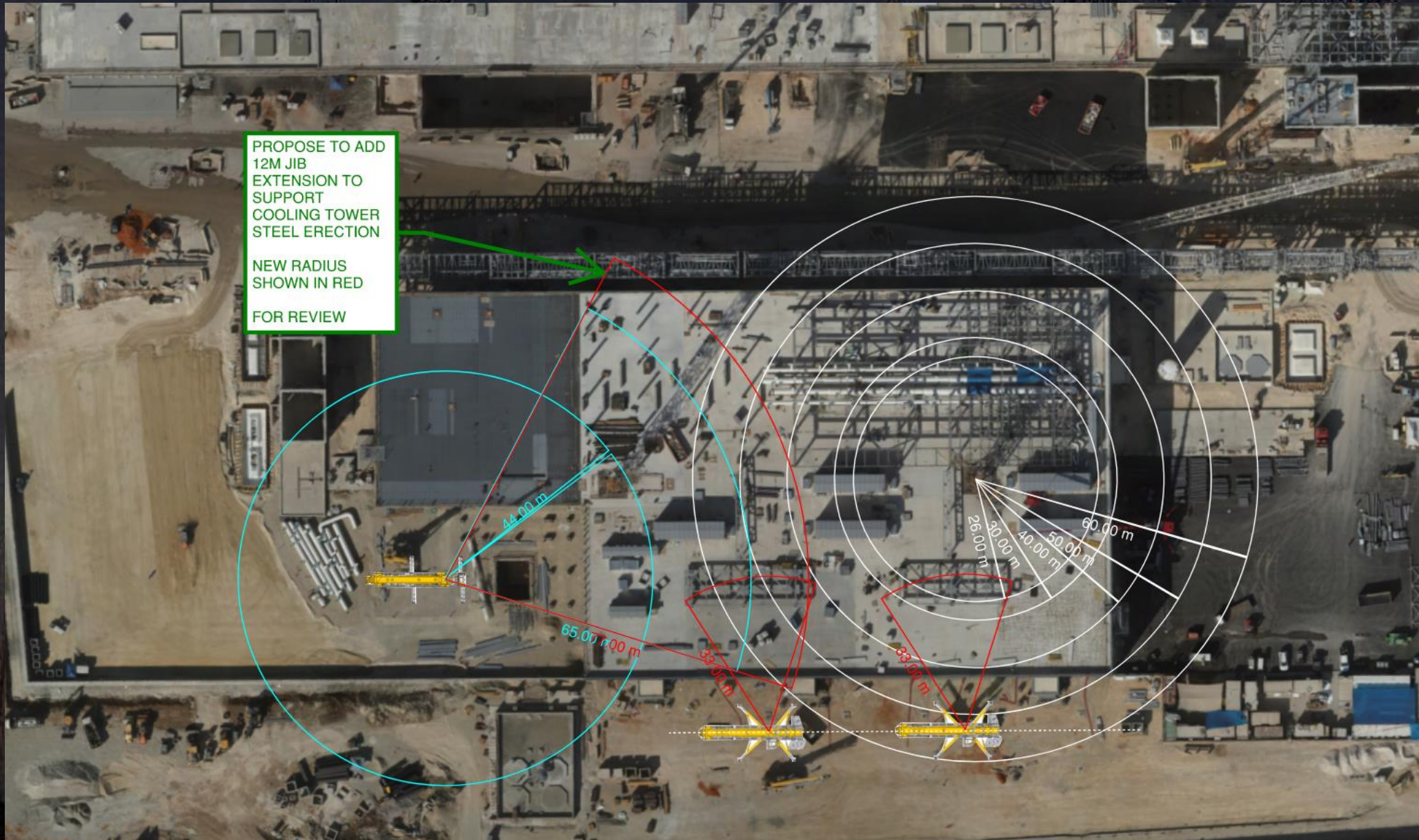


# CUB 2 – EXTERIOR/ROOF





# CUB 2 – Crane Logistics











**HOFFMAN CONSTRUCTION COMPANY**



**HOFFMAN**  
Sparrow

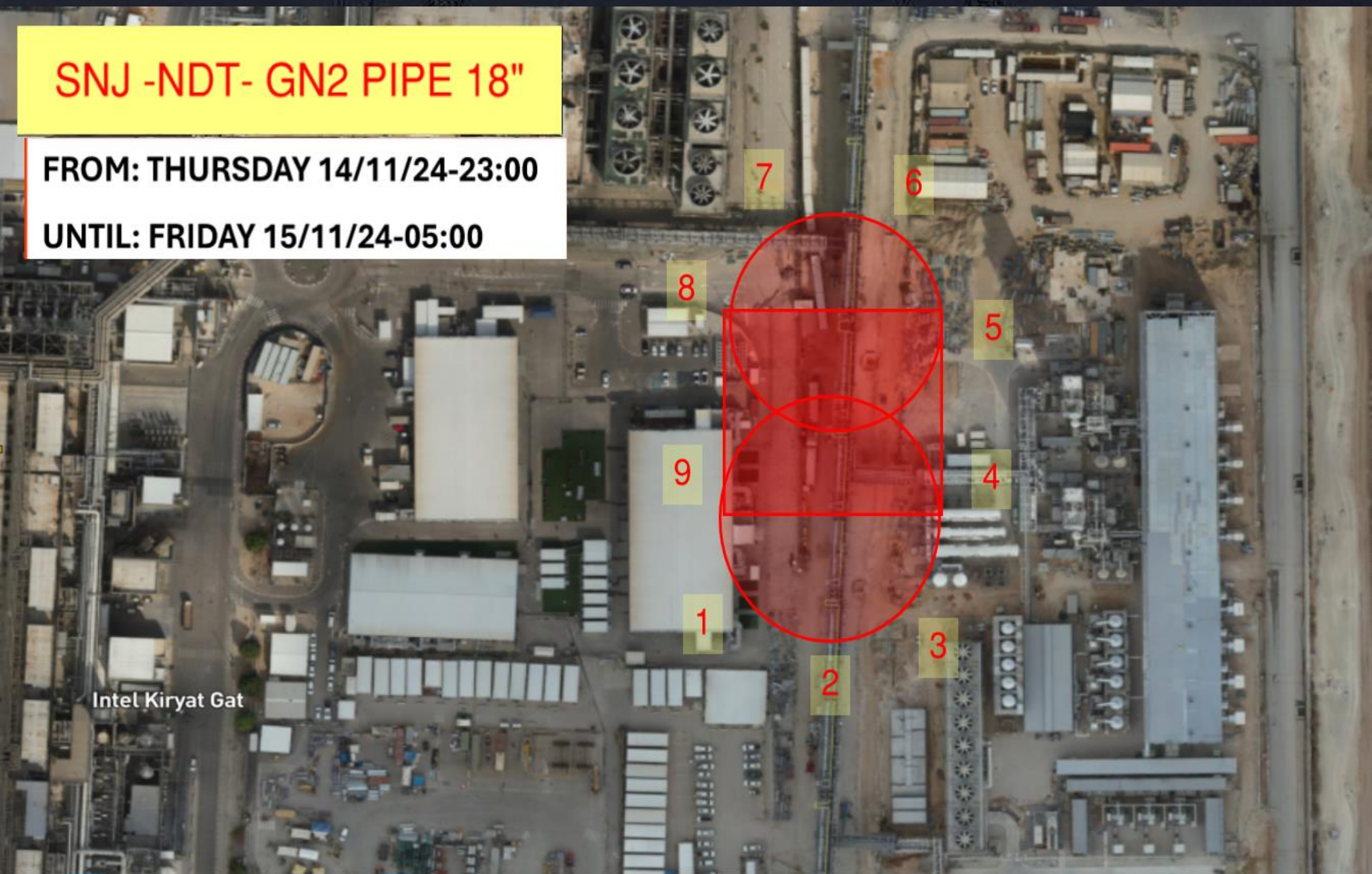


**SNJ -NDT- GN2 PIPE 18"**

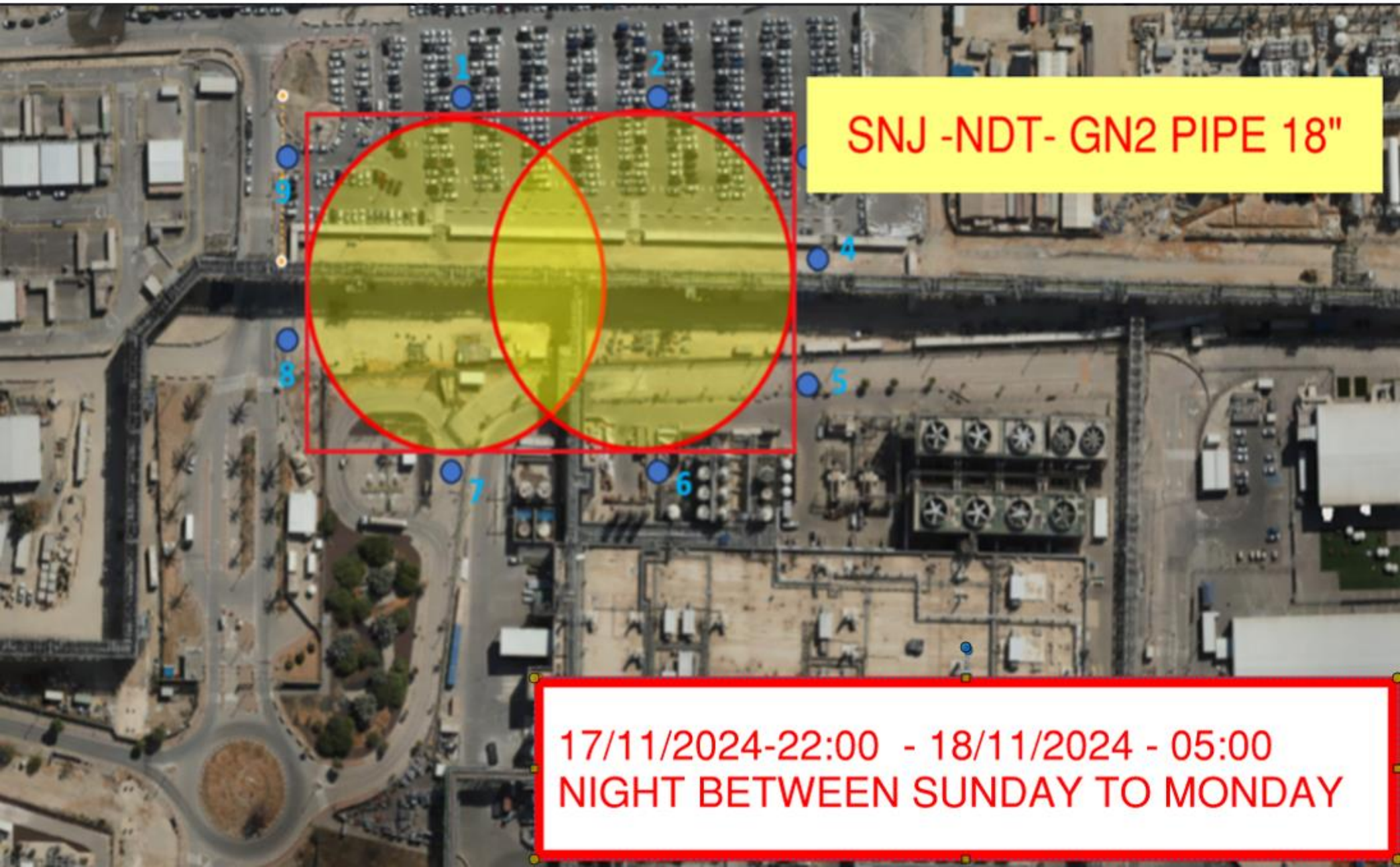
**FROM: THURSDAY 14/11/24-23:00**

**UNTIL: FRIDAY 15/11/24-05:00**

Intel Kiryat Gat







**SNJ -NDT- GN2 PIPE 18"**

**17/11/2024-22:00 - 18/11/2024 - 05:00  
NIGHT BETWEEN SUNDAY TO MONDAY**





# Daily Coordination Meeting

## Site Logistics

### North







**HOFFMAN CONSTRUCTION COMPANY**



# Daily Coordination Meeting

Site Logistics

South



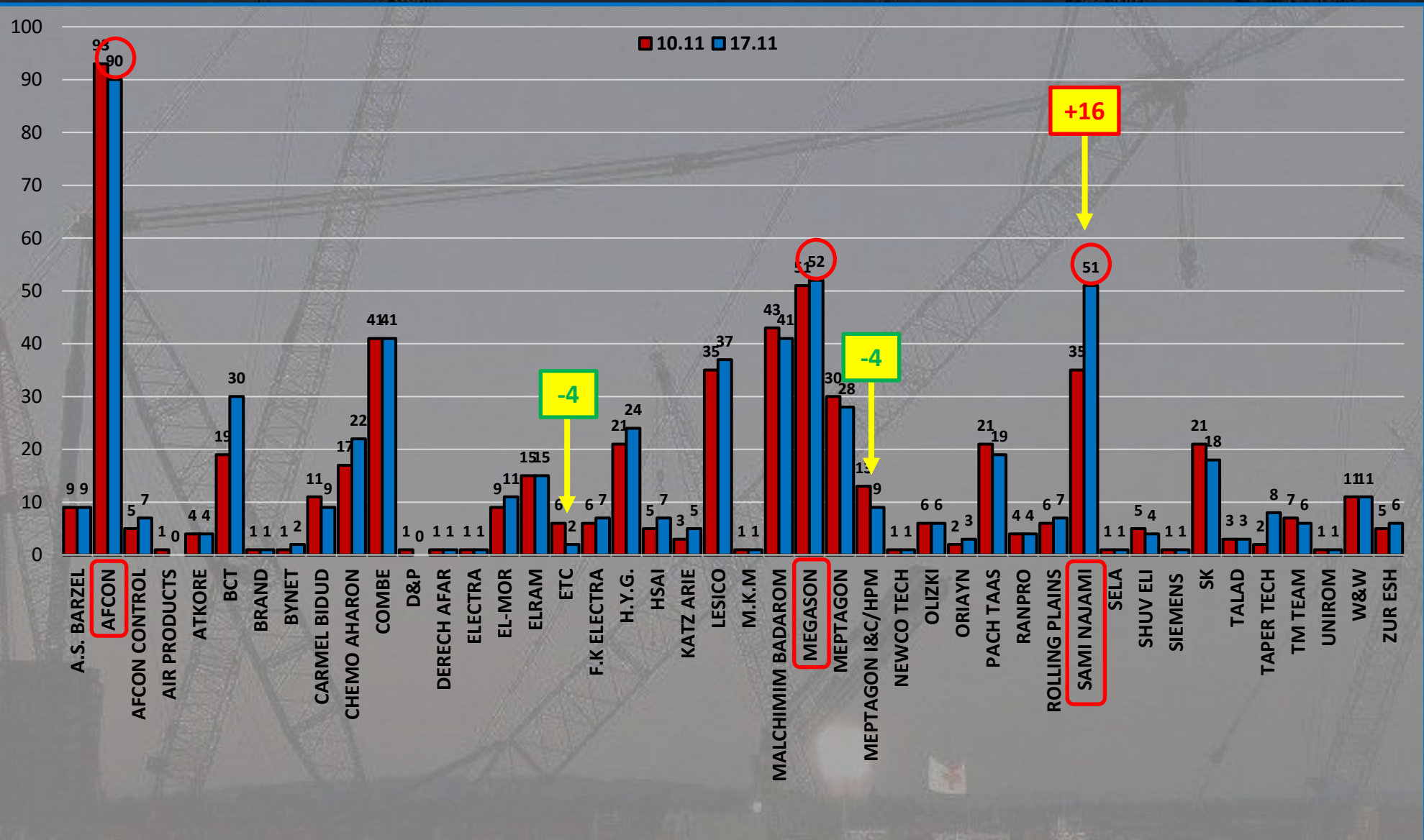




## Open CORs by Subcontractor

WW 46 – 575 CORs

WW 47 – 606 CORs

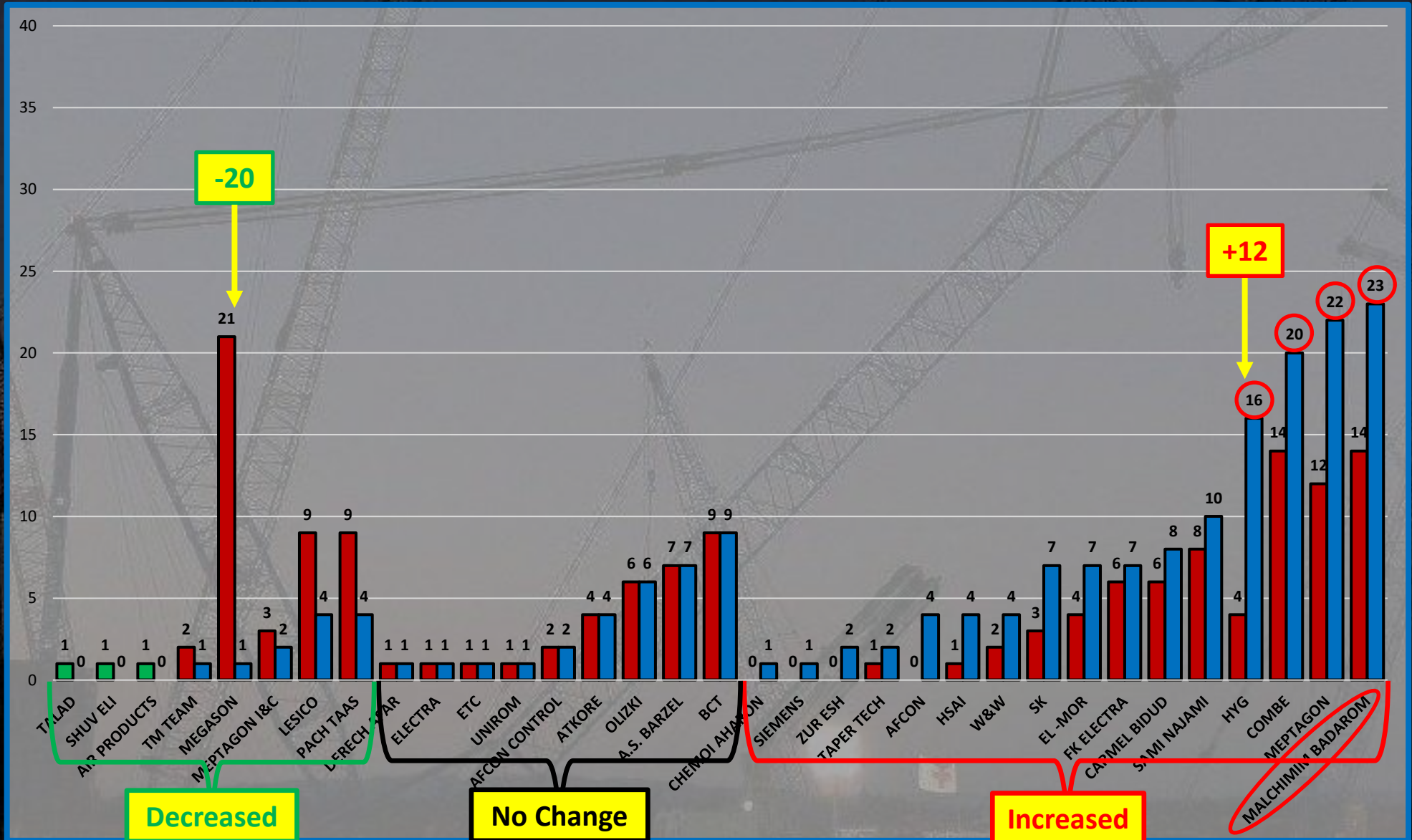




## Overdue CORs by Subcontractor

WW 46 – 154 CORs

WW 47 – 182 CORs





# Pinch Points

- We are seeing another increase on the project for pinch point injuries- body parts being injured between two objects.
- These are still trending the most with hand injuries, but we did see a significant incident on Thursday with a person driving an MEWP that hit the top of the door frame they were driving through and then fell backwards and became caught between the frame and the MEWP.
- We need to reinvest our focus on area assessments and work planning to address line of fire or pinch point or danger zone hazards. For all activities our workers should be planning to protect themselves from having their body parts smashed, hit, or stuck between 2 objects.
- Body positioning is often key, but it takes identifying the pinch point ahead of being exposed to it to ensure we are in the proper position.

# Daily Coordination Meeting



14:00 Sign In