

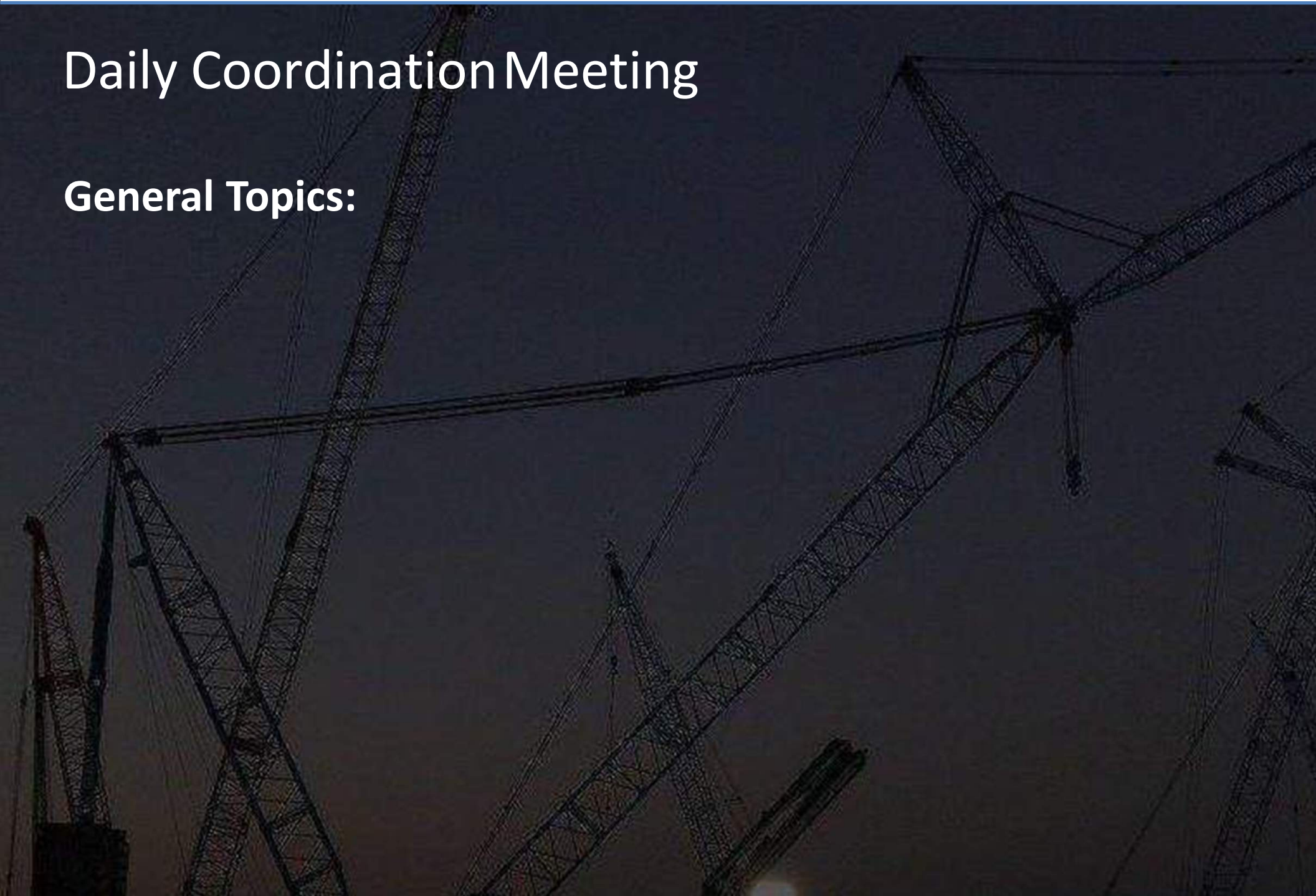
Daily Coordination Meeting



14:00 Sign In

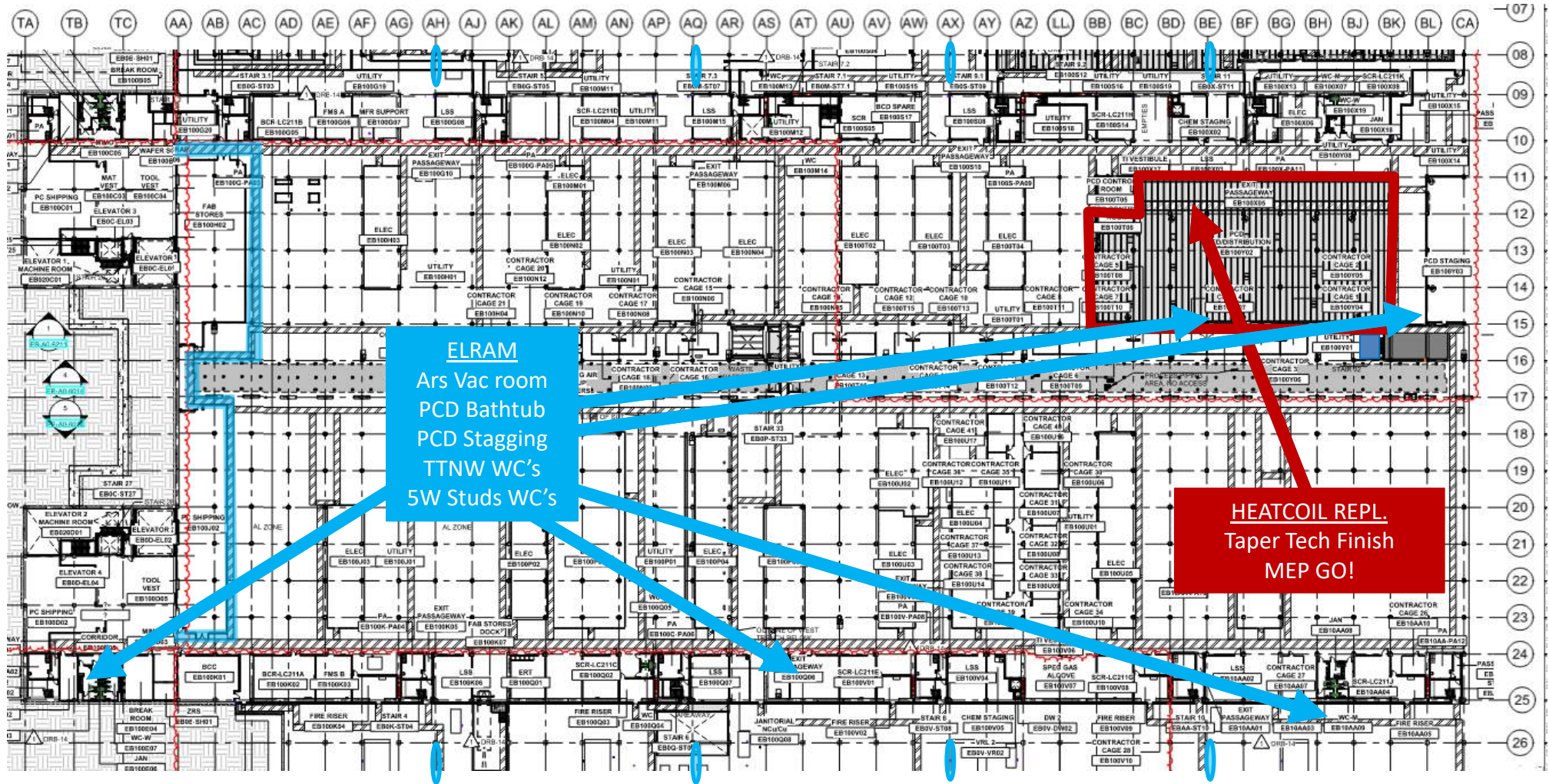
Daily Coordination Meeting

General Topics:



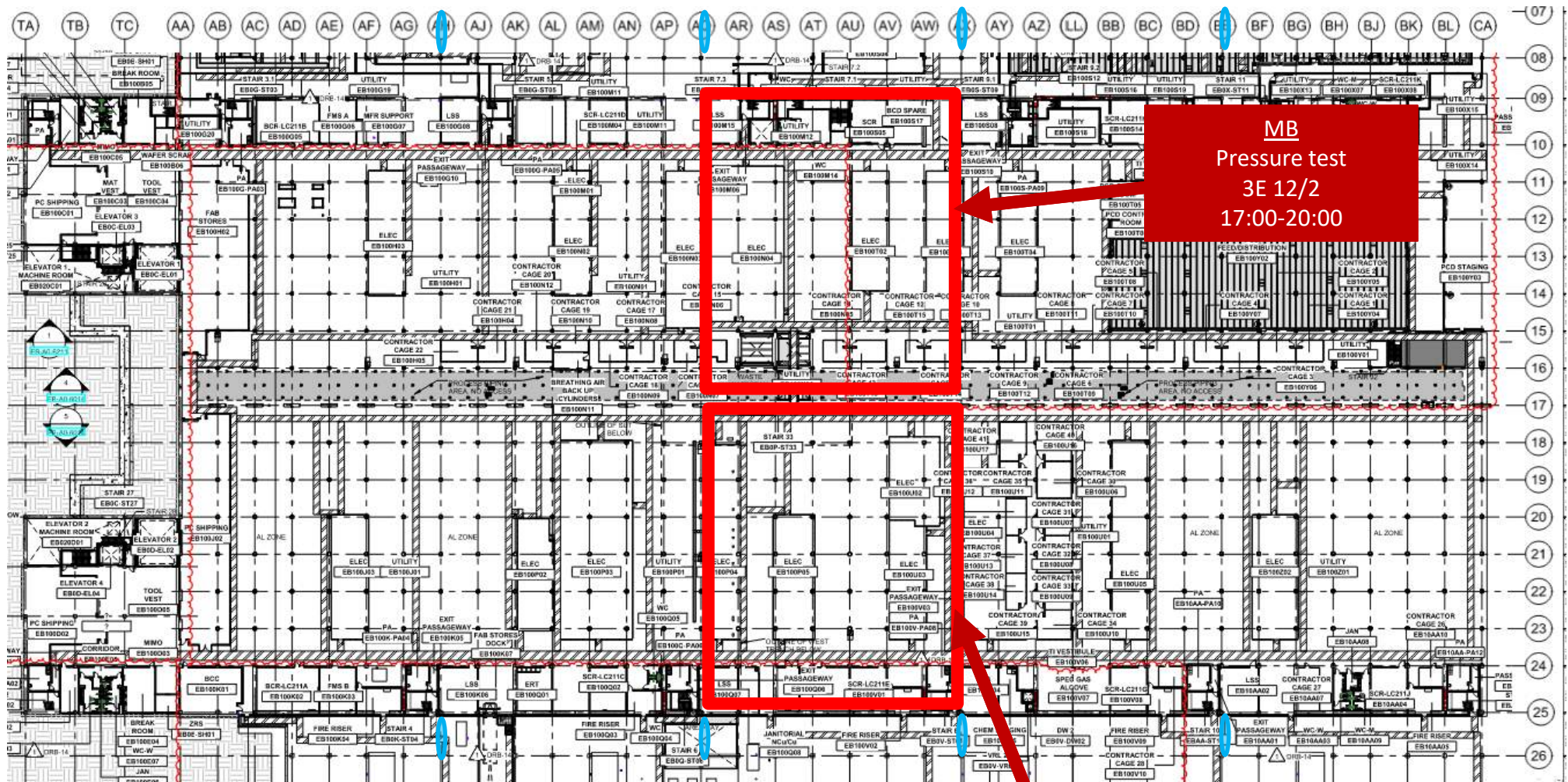


UTILITY LEVEL MOD1





Pressure test M.B



MB
Pressure test
3E 12/2
17:00-20:00

MB
Pressure test
3W 11/2
17:00-20:00



Utility Level MOD2

Don't bring any material without coordination with Oscar M.

Staggering material is possible but must be coordinated and must follow the rules (no combustibles, nothing touch the floor ETC.)

Thanks.

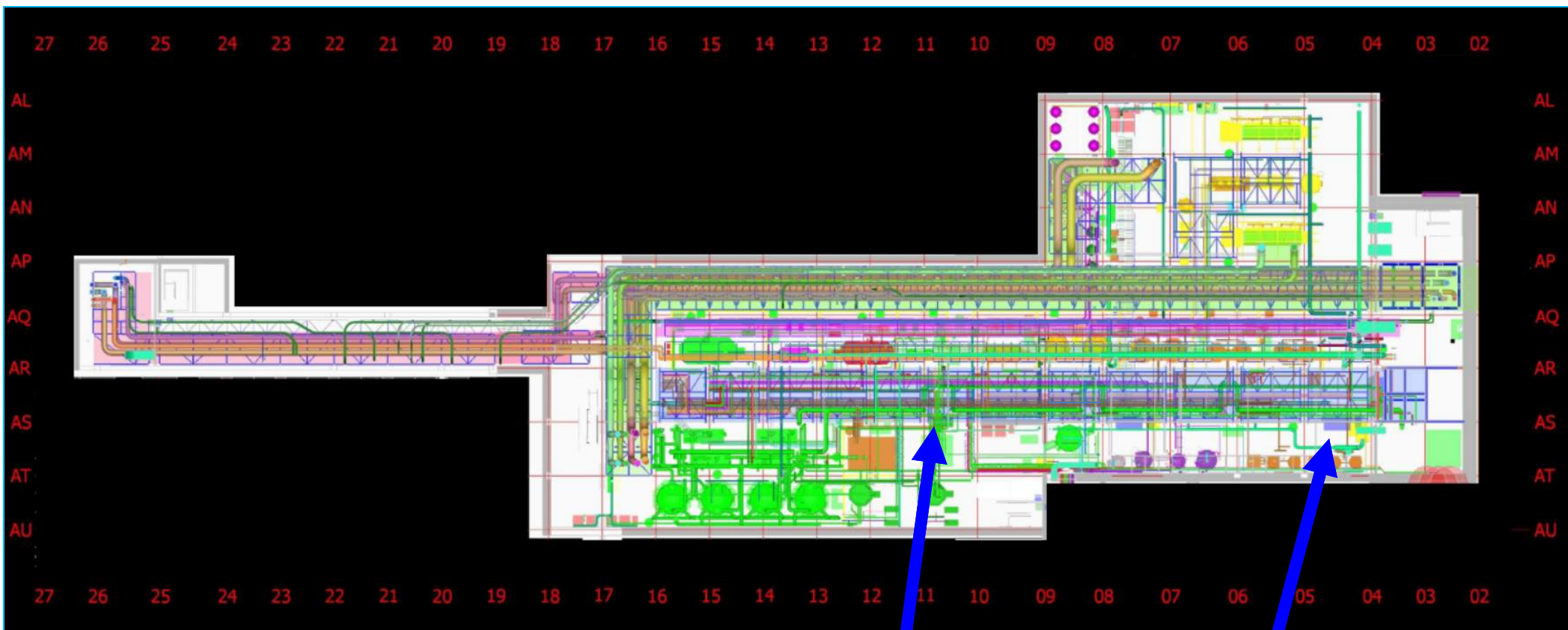
Utility Level MOD2

Don't bring any material without coordination with Oscar M.

Staggering material is possible but must be coordinated and must follow the rules (no combustibles, nothing touch the floor ETC.)

Thanks.

SUT 38.1 LEVEL



Biocide
Ready for
Totes set.

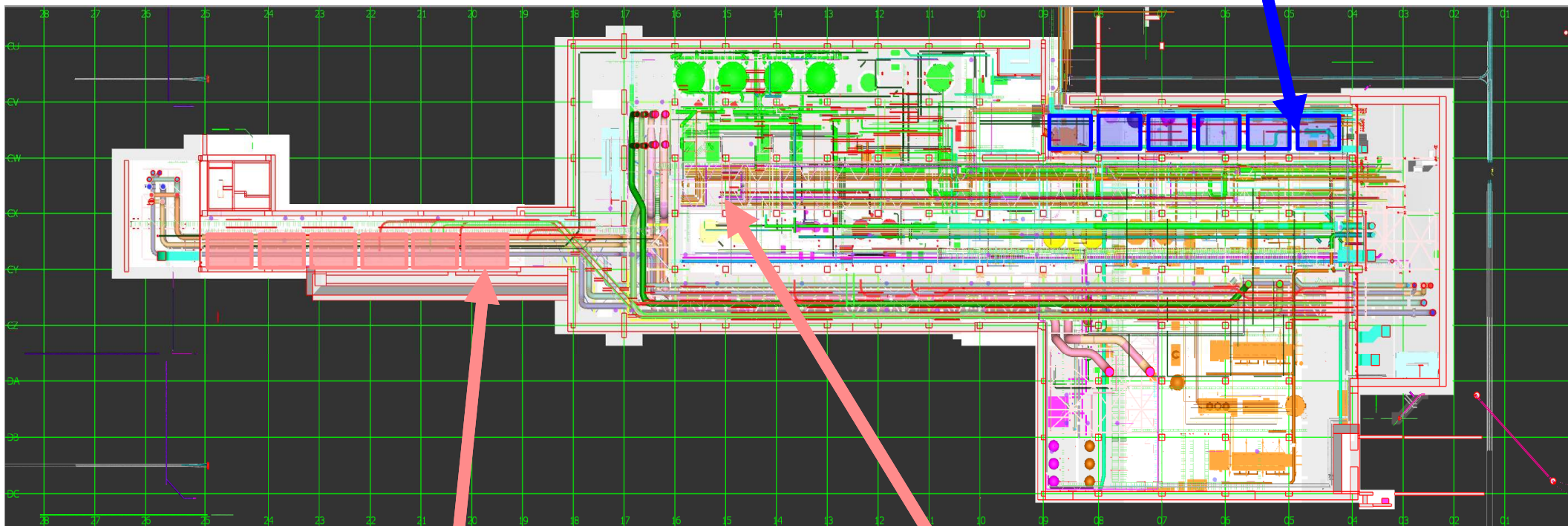
SOG
Ready for
Totes set.

16/02/2025	Module 1
20/02/2025	Module 2
23/02/2025	Module 3
26/02/2025	Module 4

16/02/2025	Module 1
20/02/2025	Module 2
23/02/2025	Module 3
26/02/2025	Module 4
02/03/2025	Module 5
04/03/2025	Module 6

SUT 38.2 LEVEL

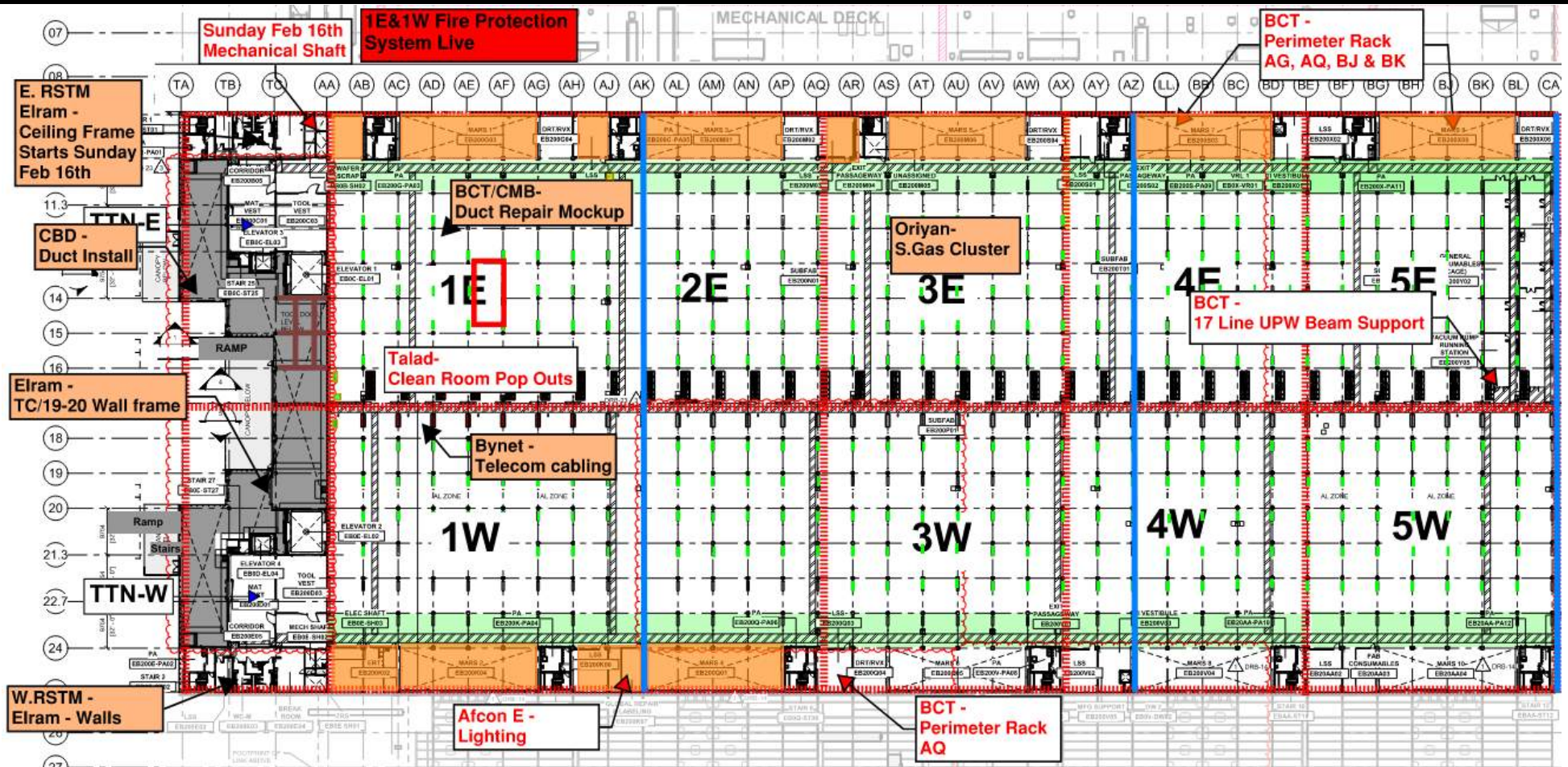
Rack 4b
Inter
Connection's



Rack 6
MIMO -
Module #1
16.2.25

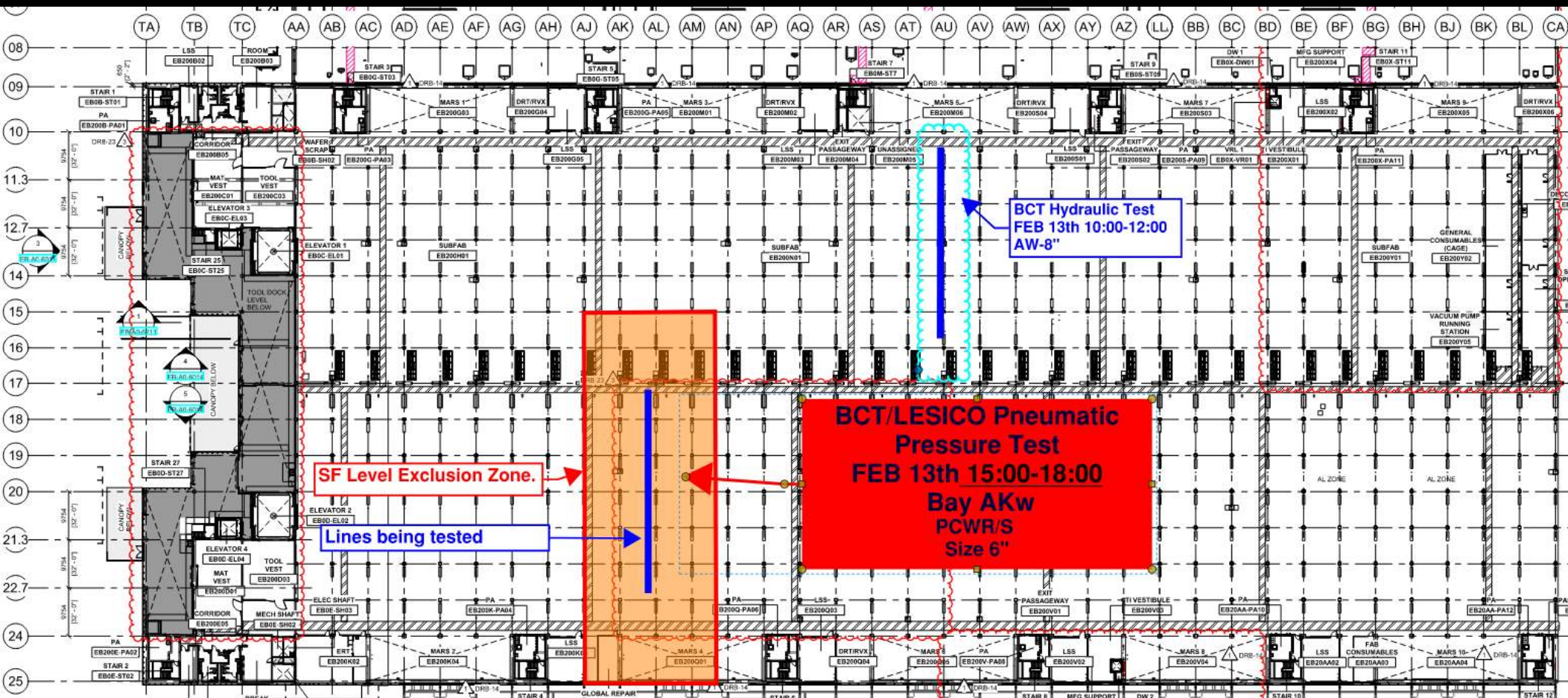
Temp stairs
relocation

SUBFAB BUILDOUT MOD 1



[illegible]

BCT Pressure Tests Tomorrow

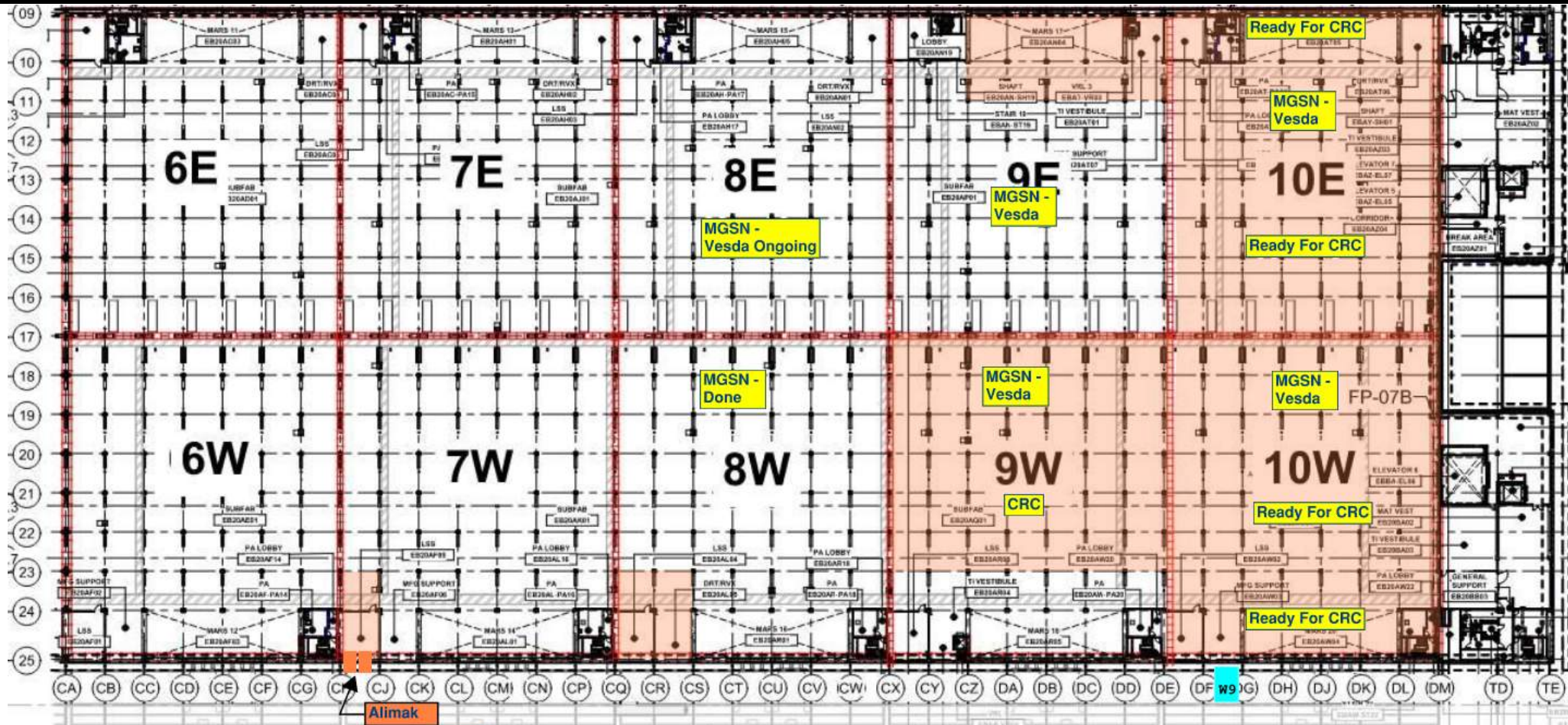


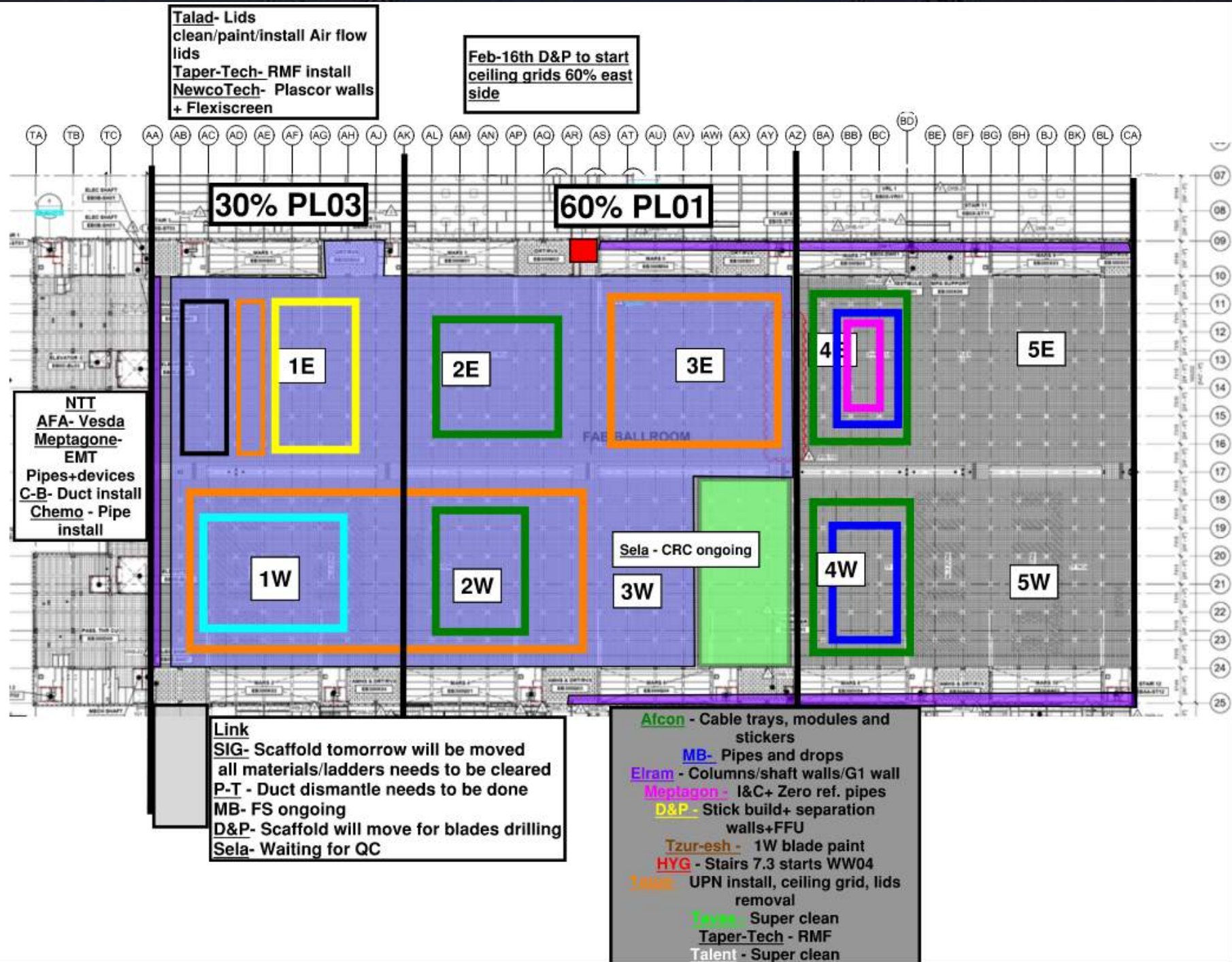
LESICO NDT Test
FEB 12th 17:00-13th 05:00
Bay AS,AT
UN2
Size 4",6"

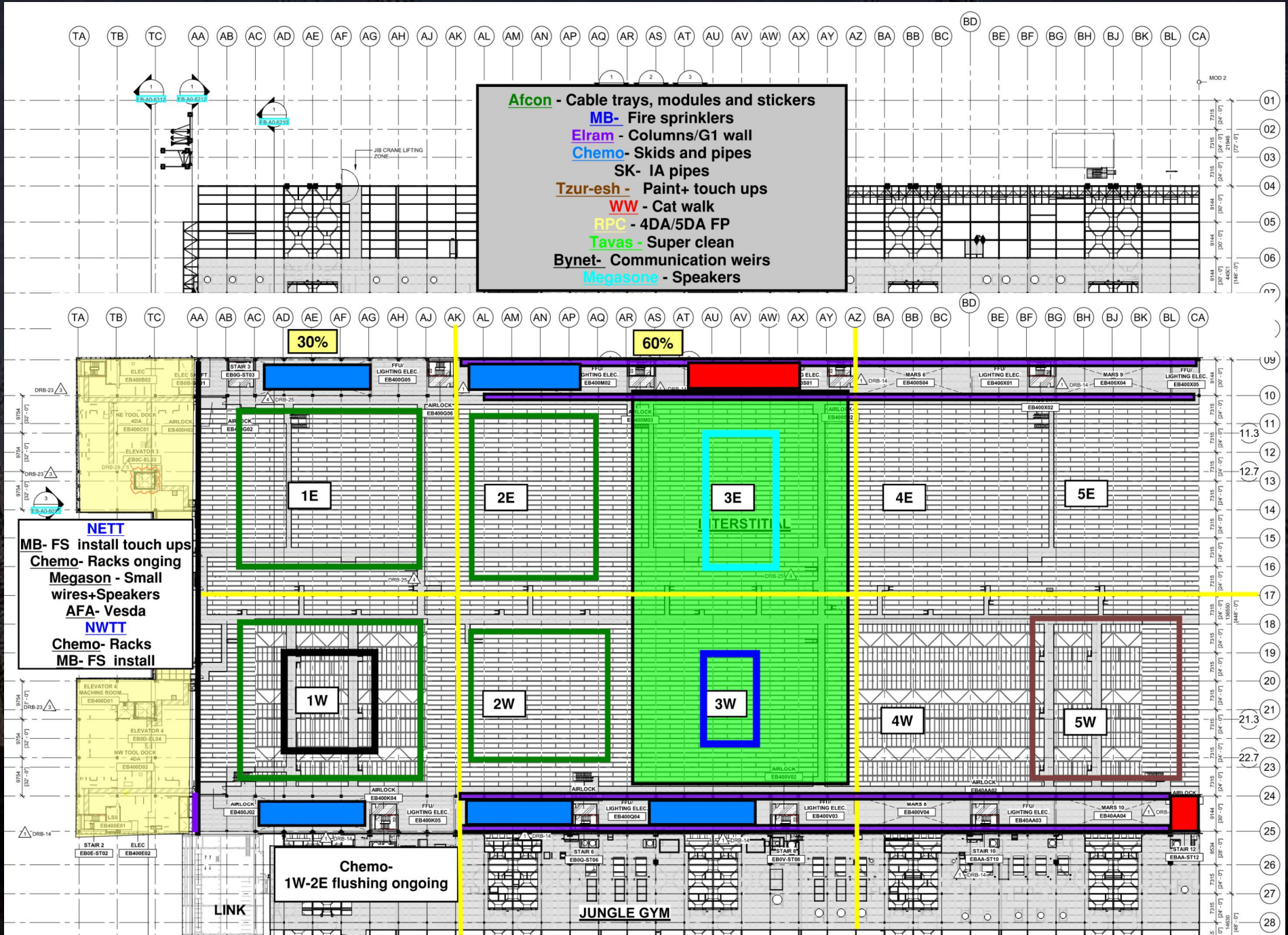
SF Level Exclusion Zone.

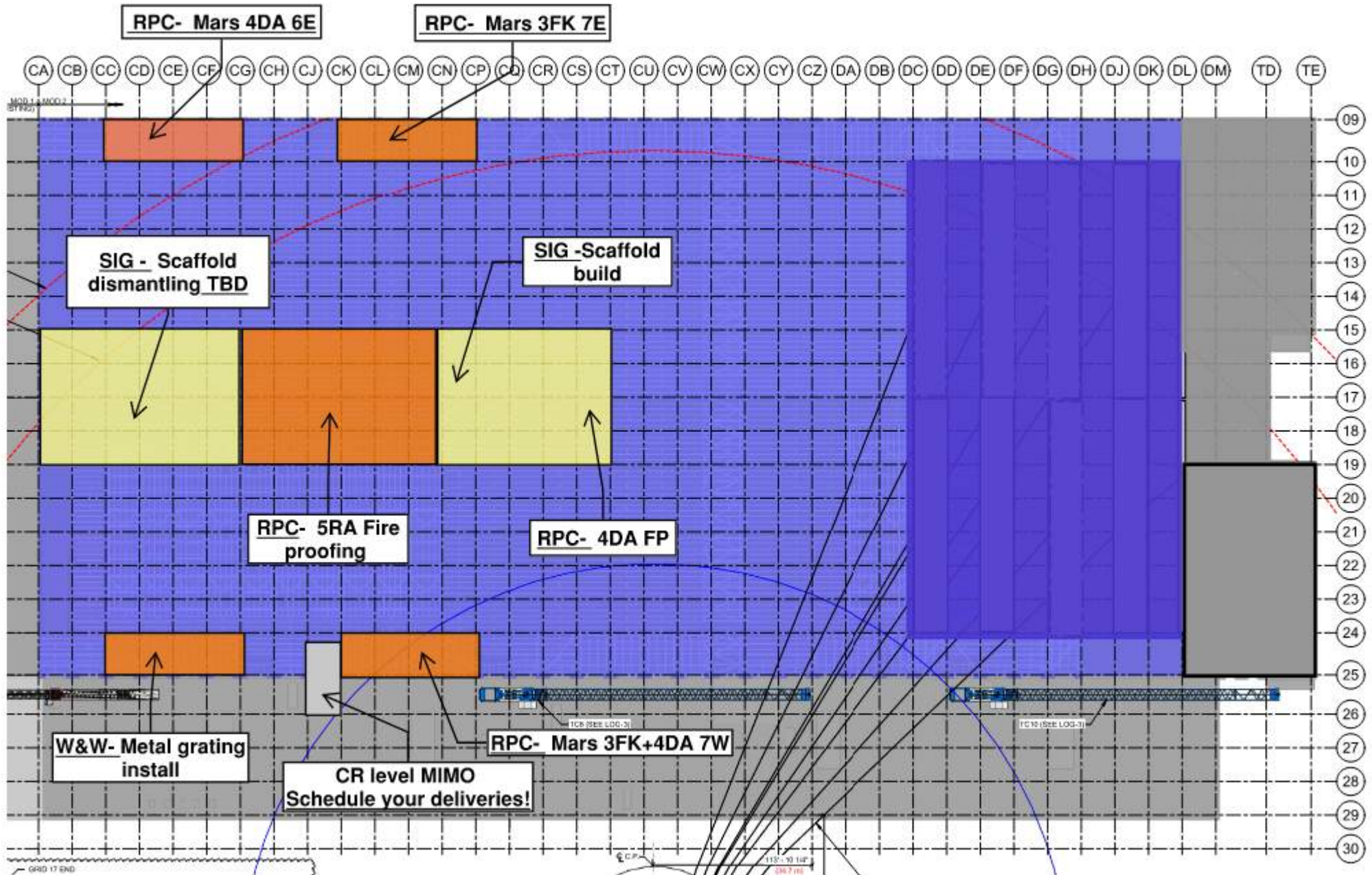
Lines being tested

SUBFAB BUILDOUT MOD 2











Tapper tech



D&P



Bynet



Talad



60% MLB



60% Afcon



30% Sami najami



60% Sami najami



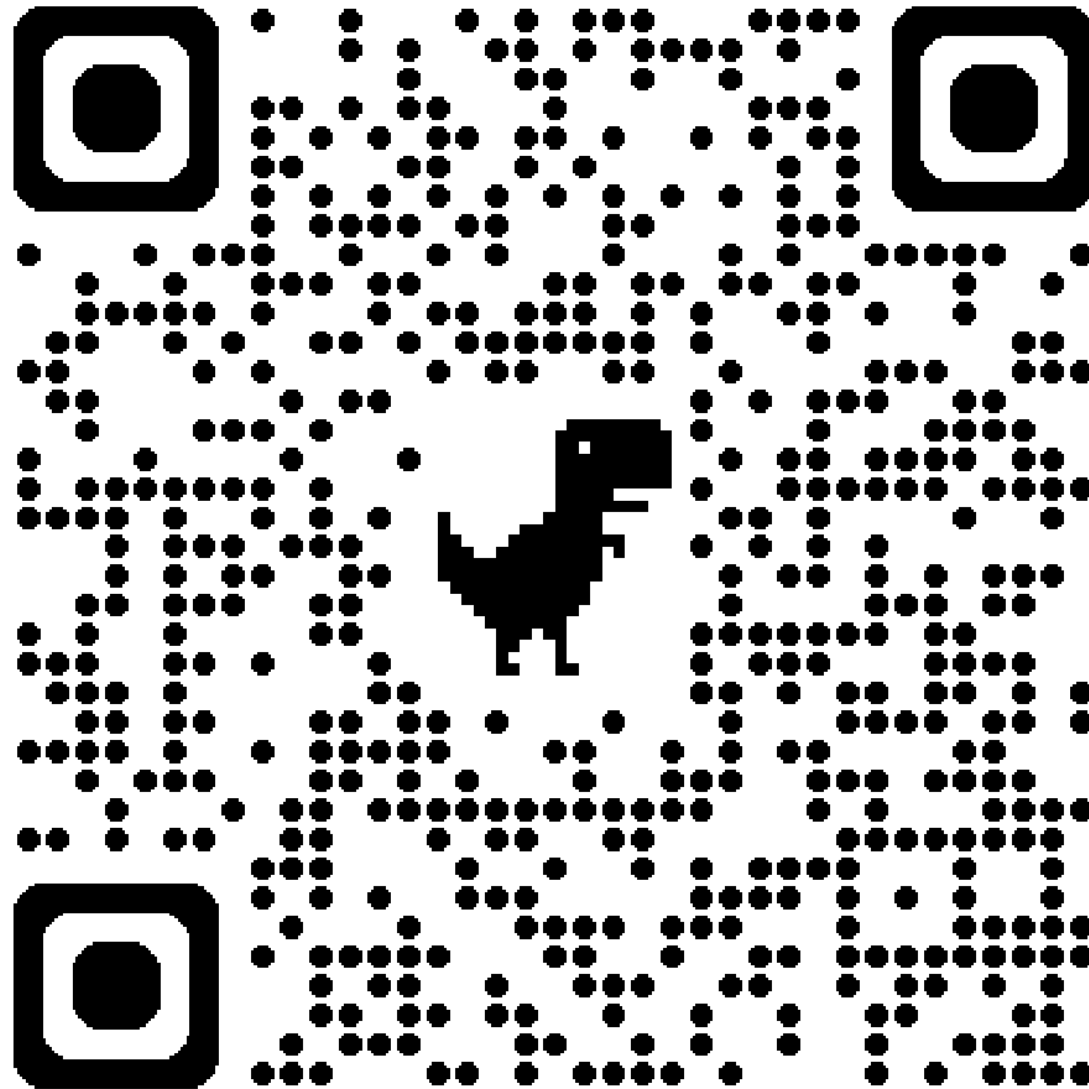
60% TMT



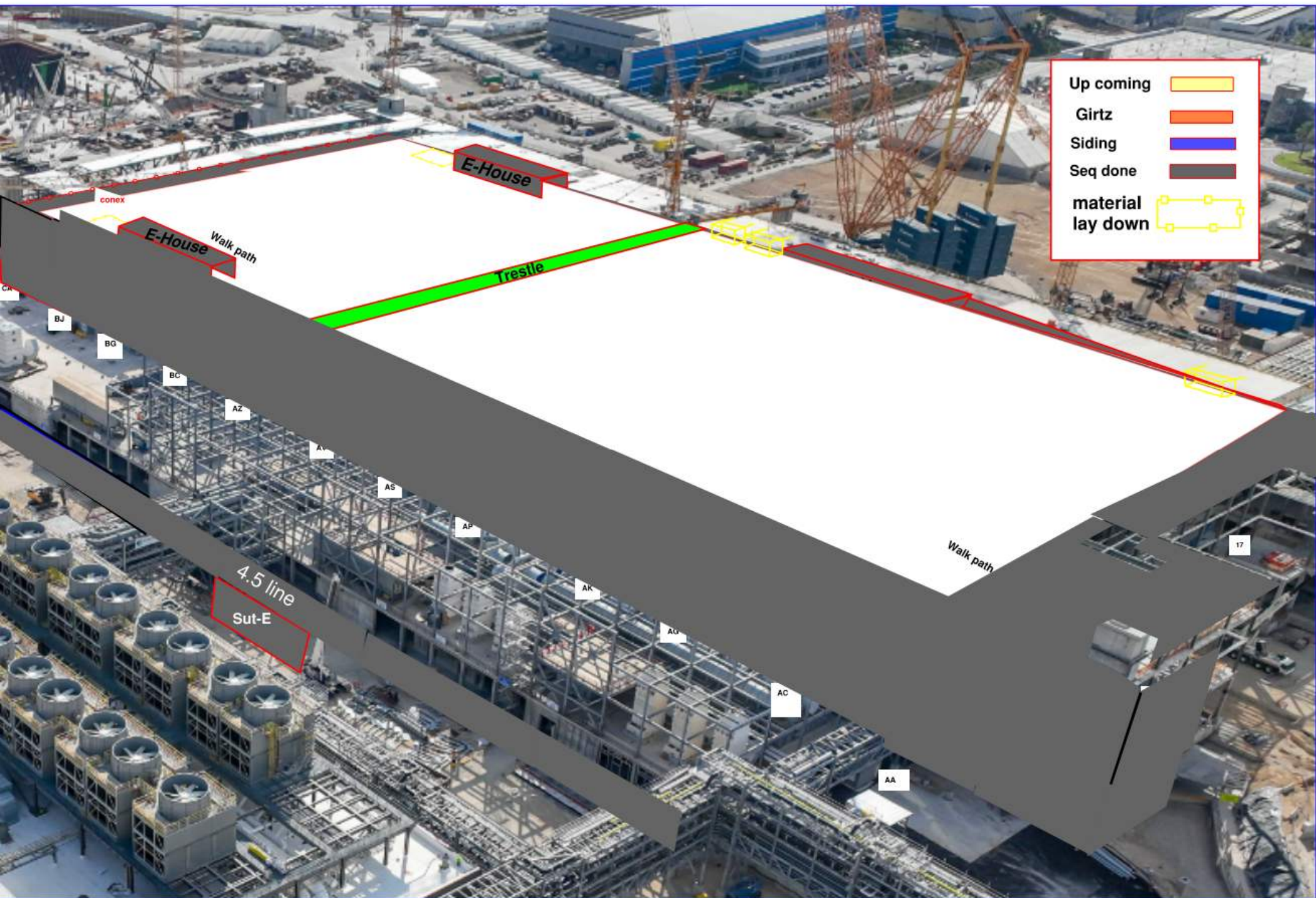
Alimak Shut Down
night Shift
Sunday + Monday
FEB/11~12
from 16:00 p.m till 05:00 a.m

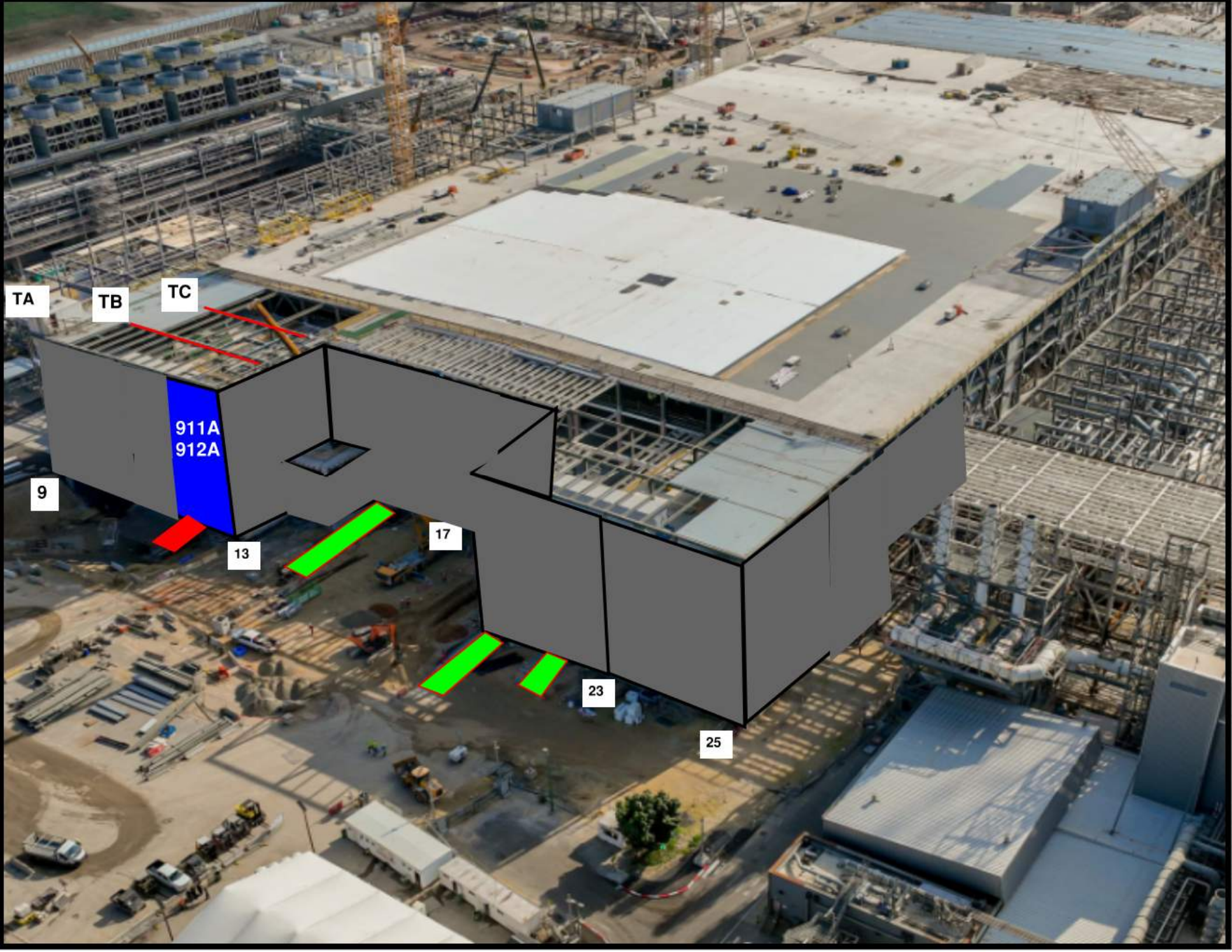
LIFTS
WED
4.30

Siding Penetration Request Form



Subcontractor must fill out and submit all required cells in order to get a penetration cut through the siding.





TA

TB

TC

911A
912A

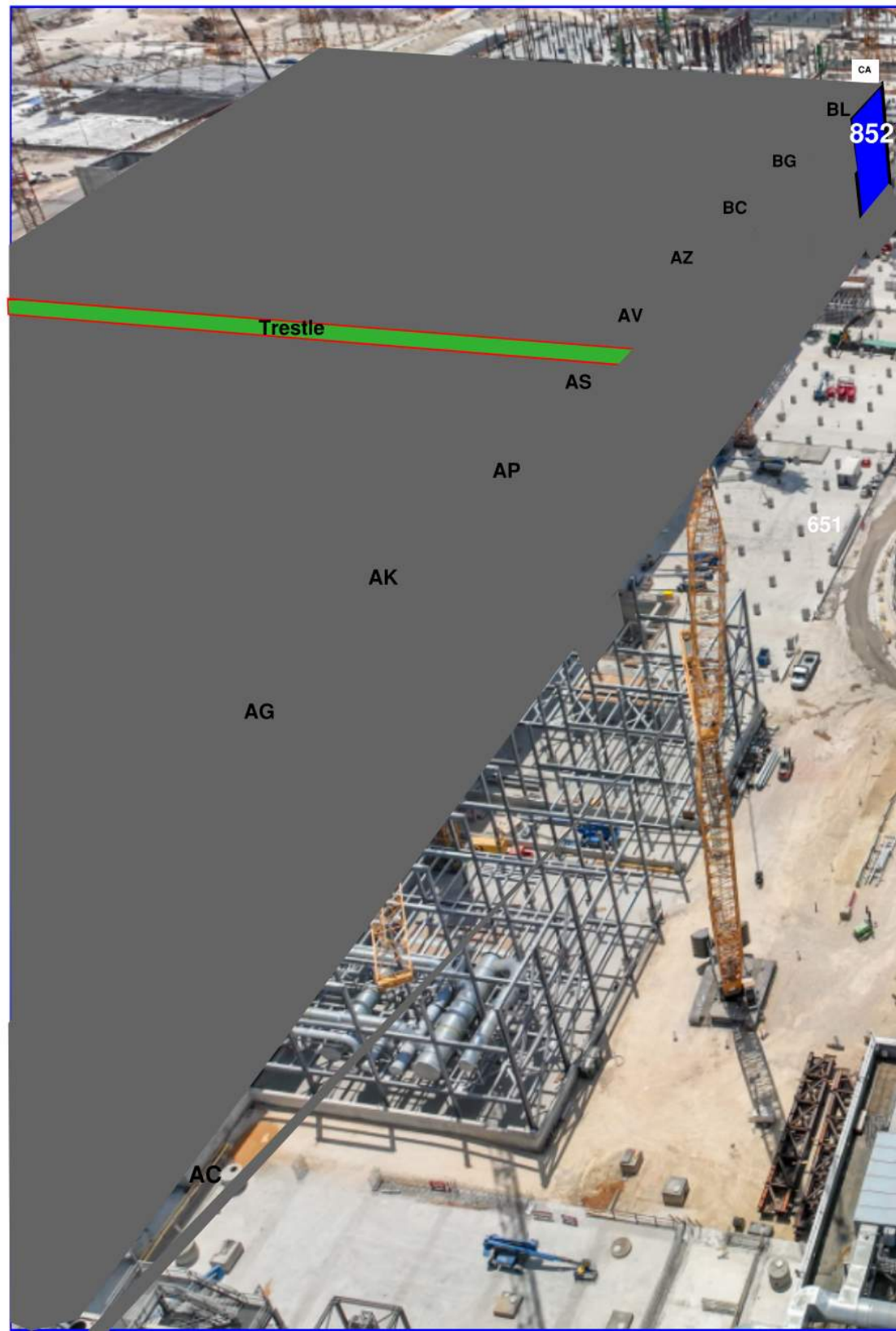
9

13

17

23

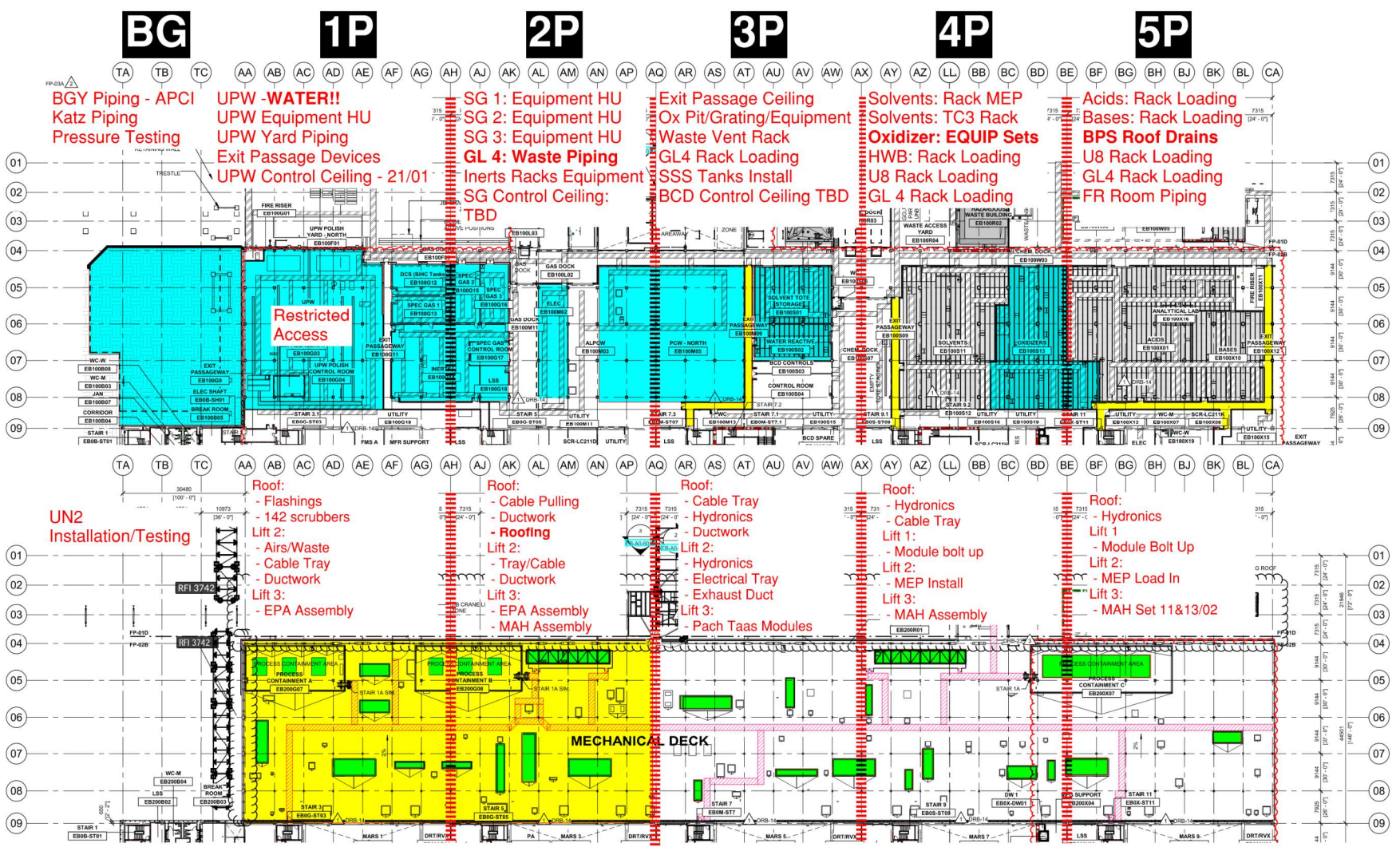
25



PSSS.1

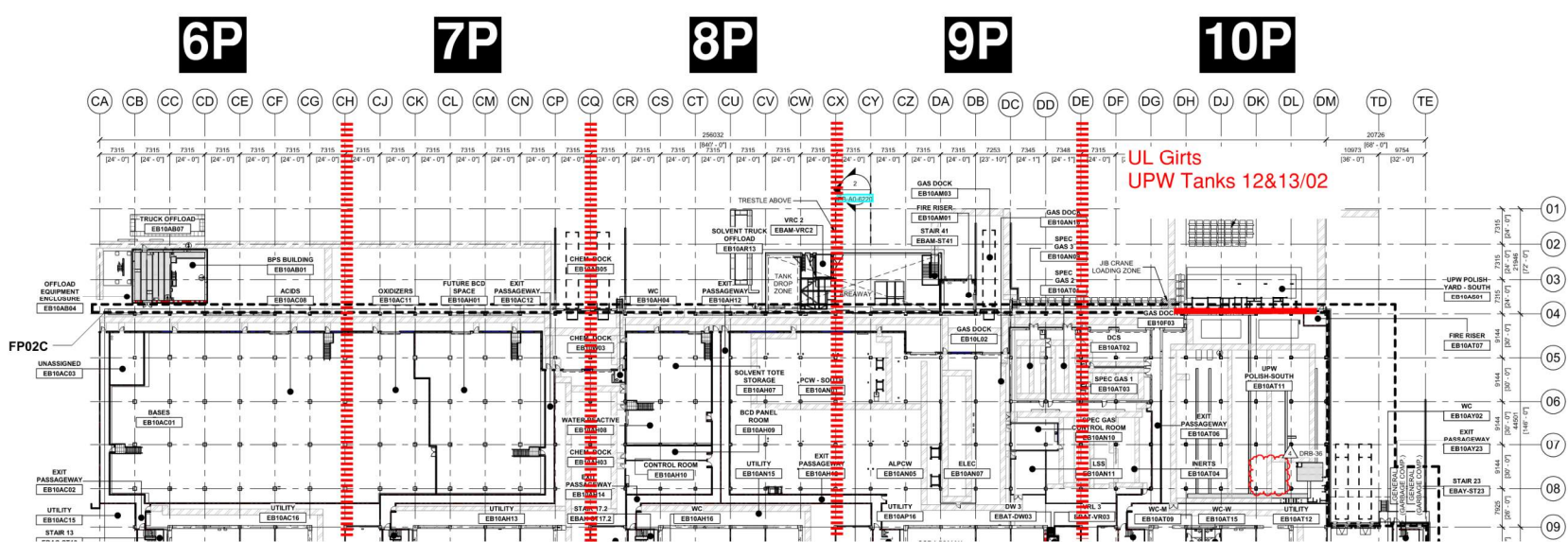
Utility Level
1YA

PSSS Roof
2SA

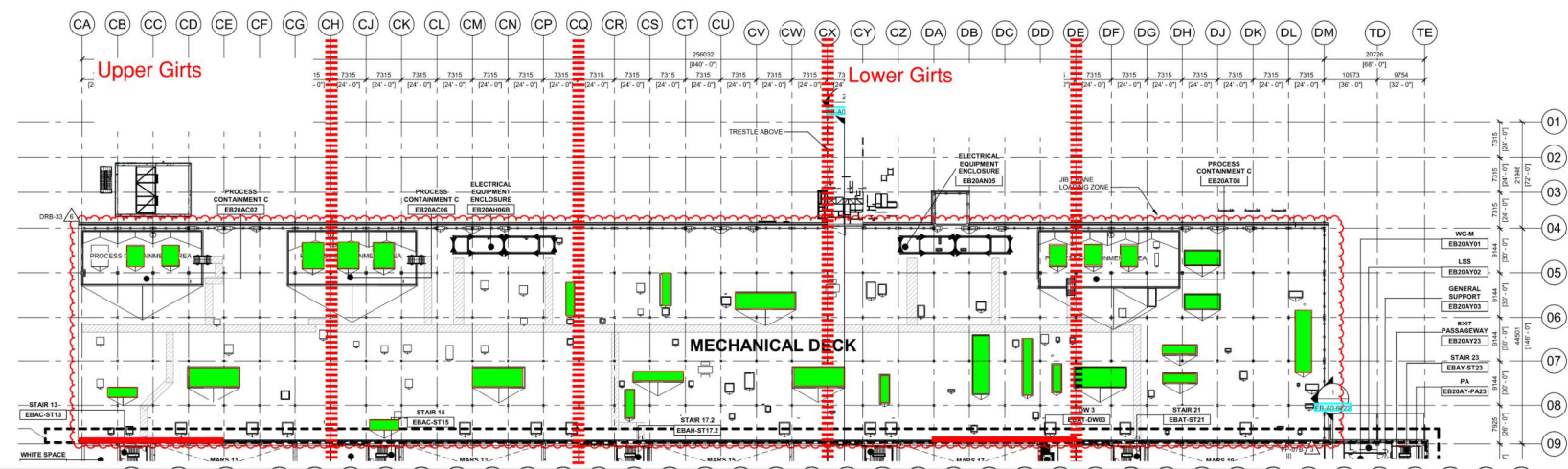


PSSS.2

Utility Level
1YA

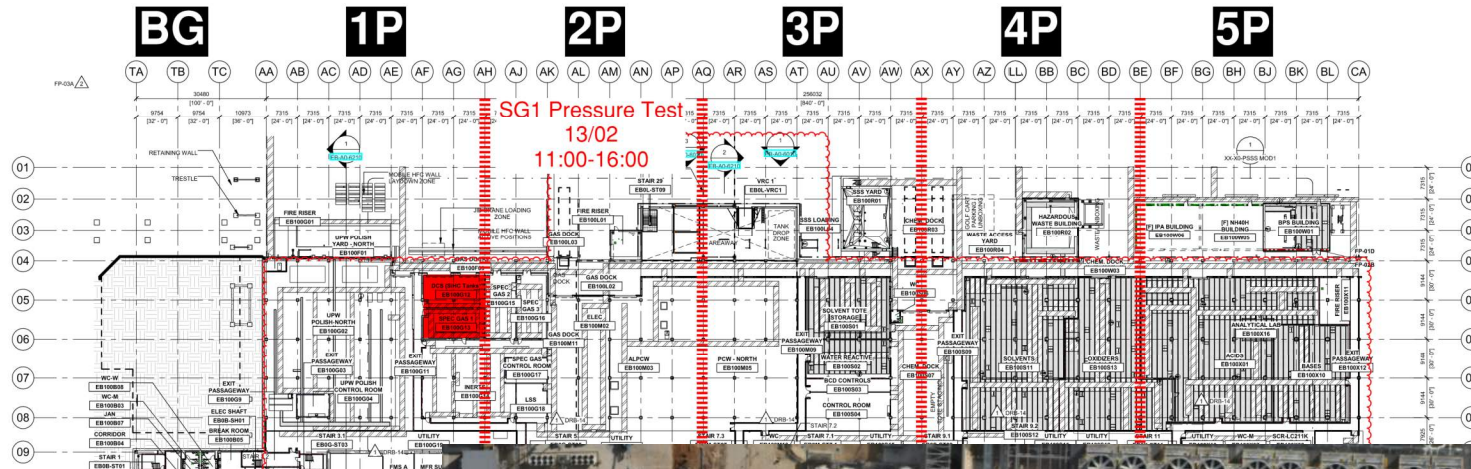


PSSS Roof
2SA



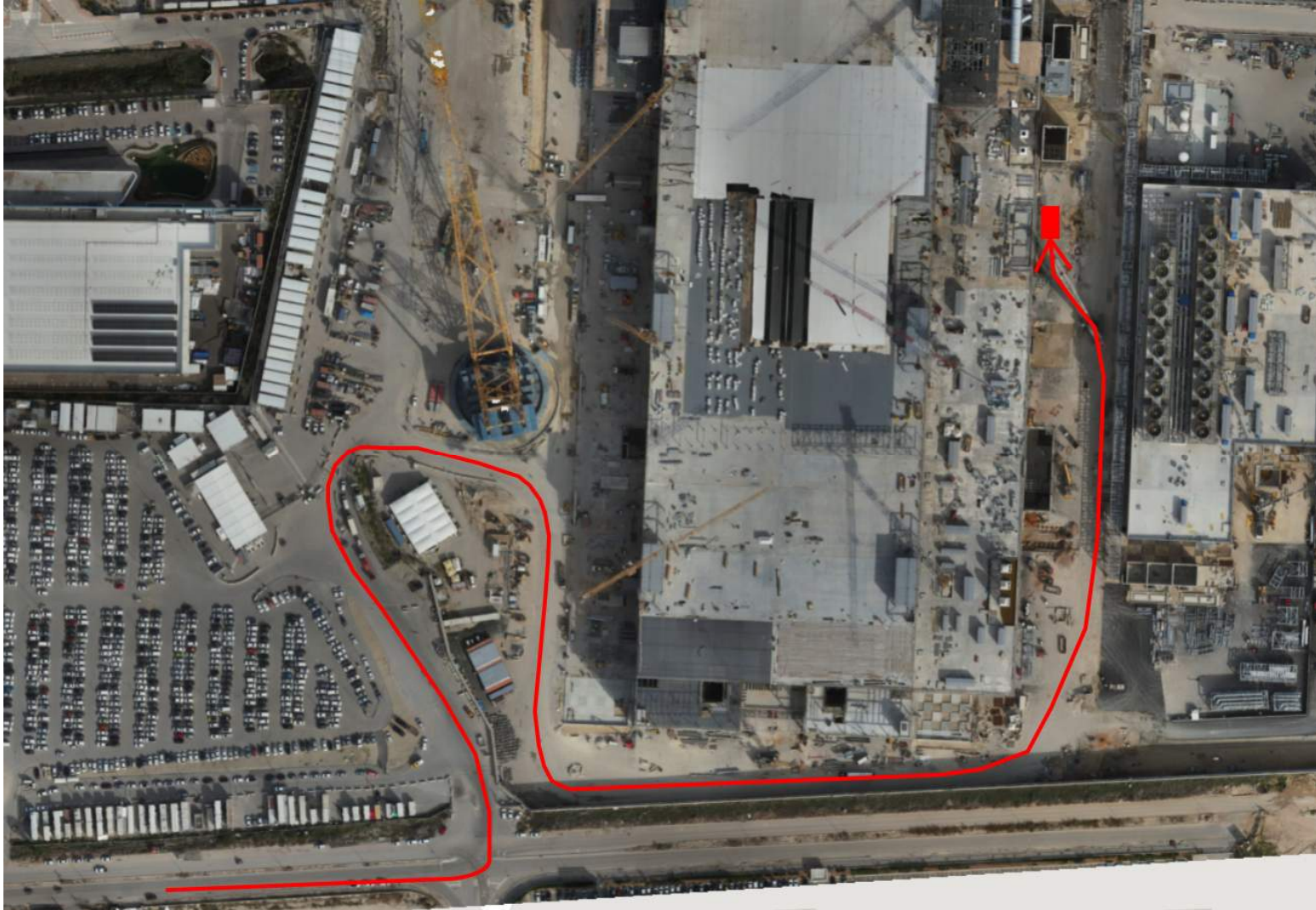
PSSS Pressure Tests

Utility Level
1YA



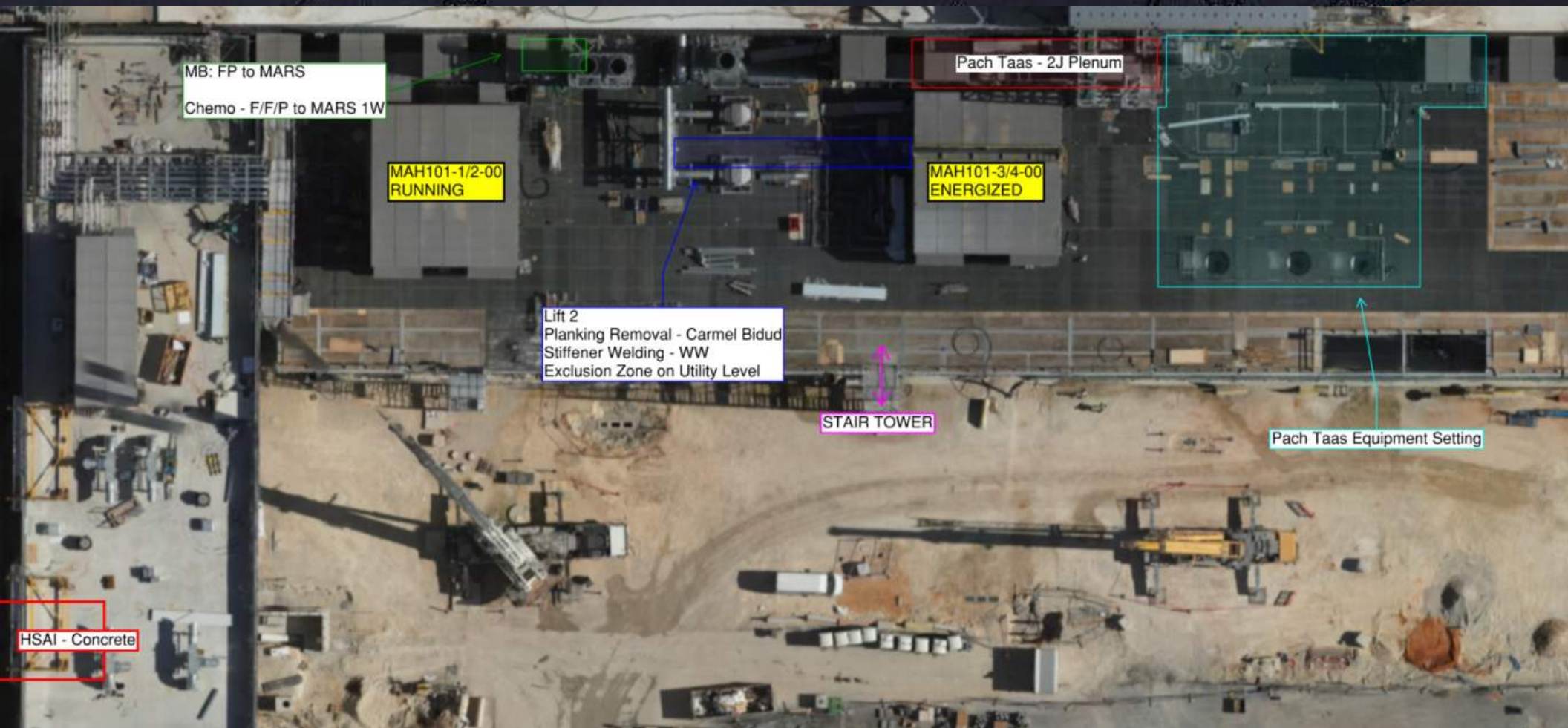
NDT Testing 13/02 17:00-05:00
PSSS All Levels, SF, CR, INT

5P MAH Delivery 12/02



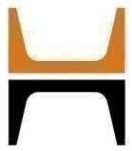


WJG 01J, 02J LIFT 2 & 3

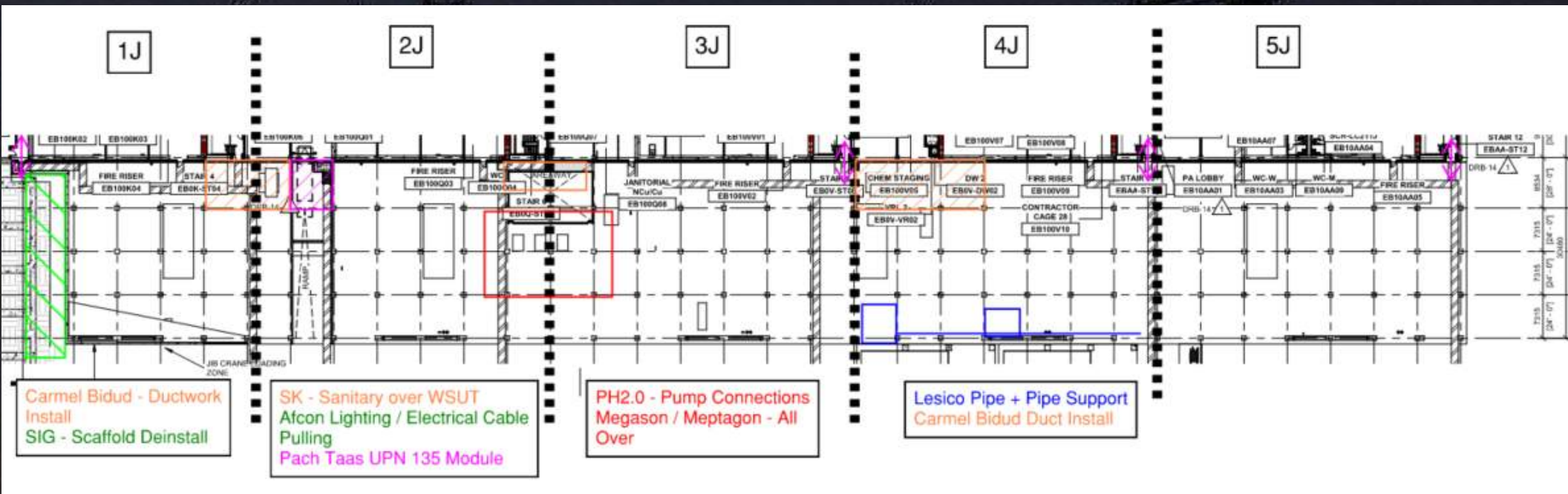


WJG 03J, 04J, 05J LIFT 2 & 3



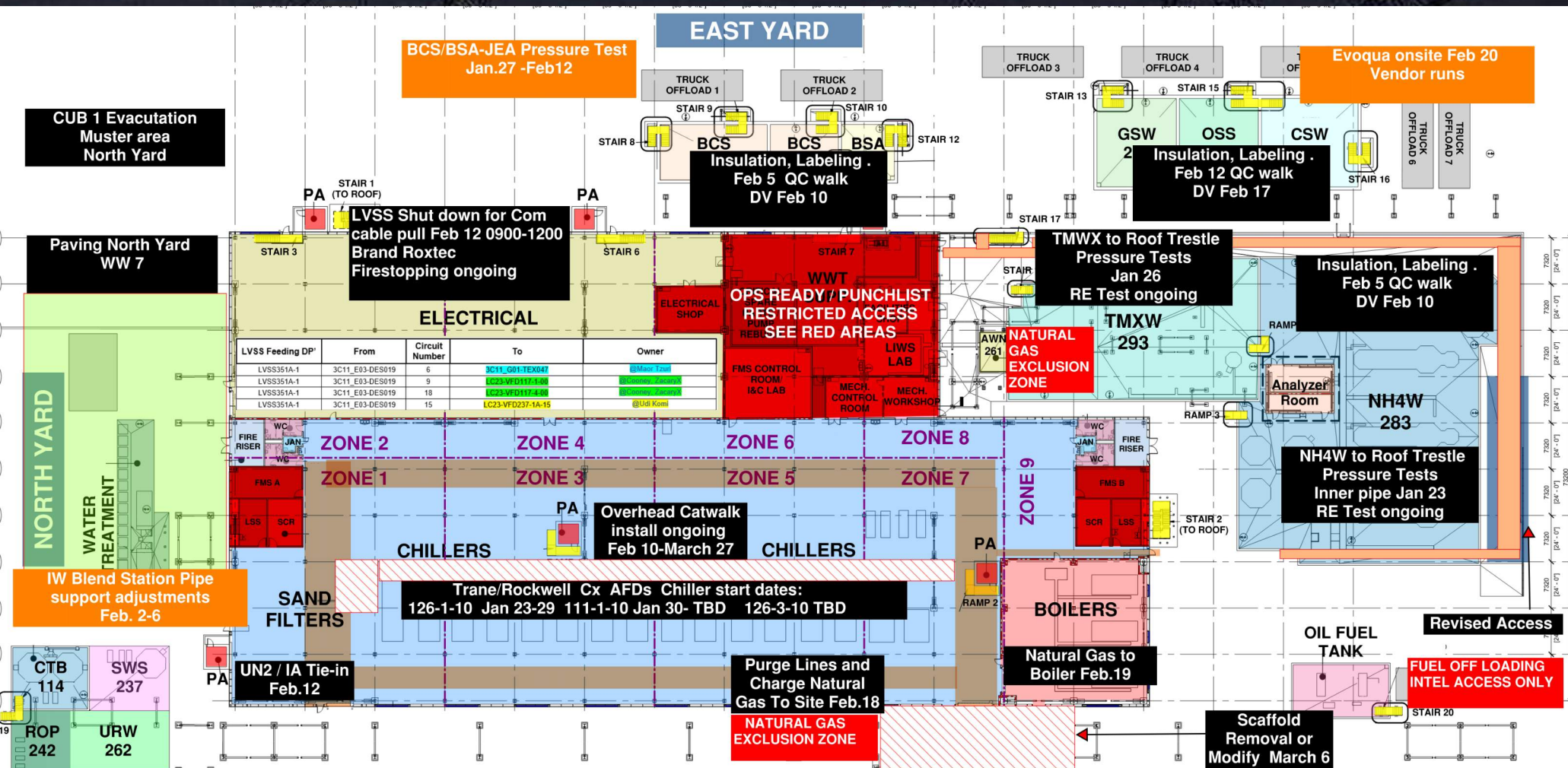


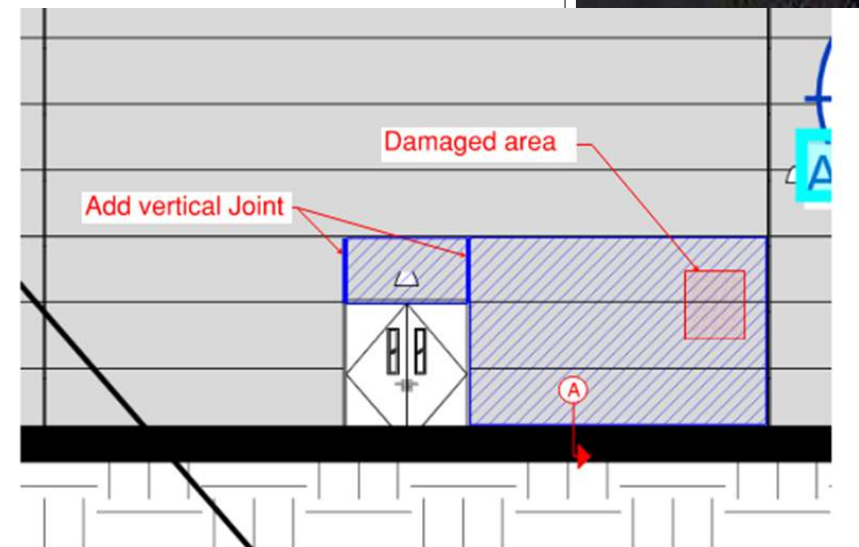
WJG UTILITY LEVEL BUILD OUT



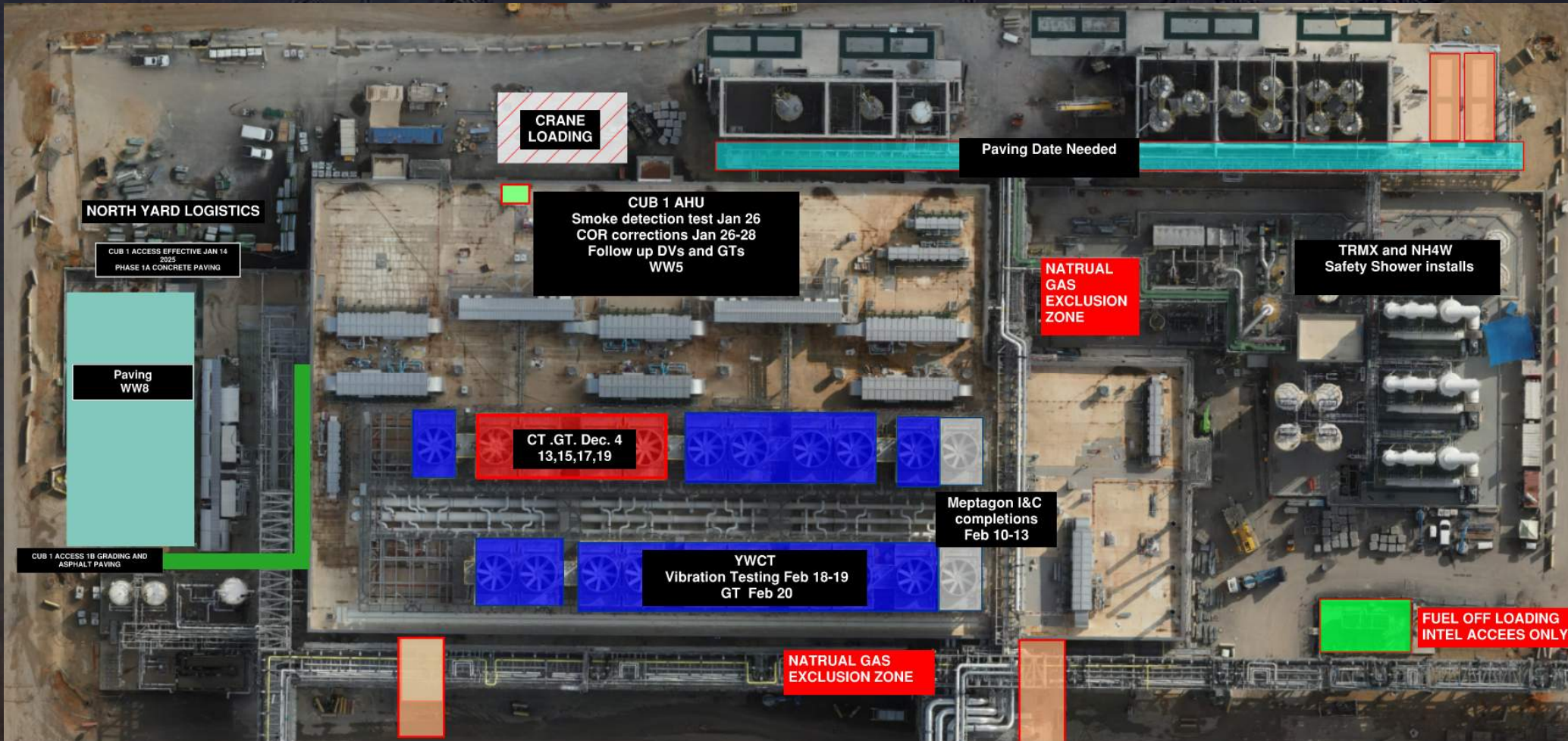


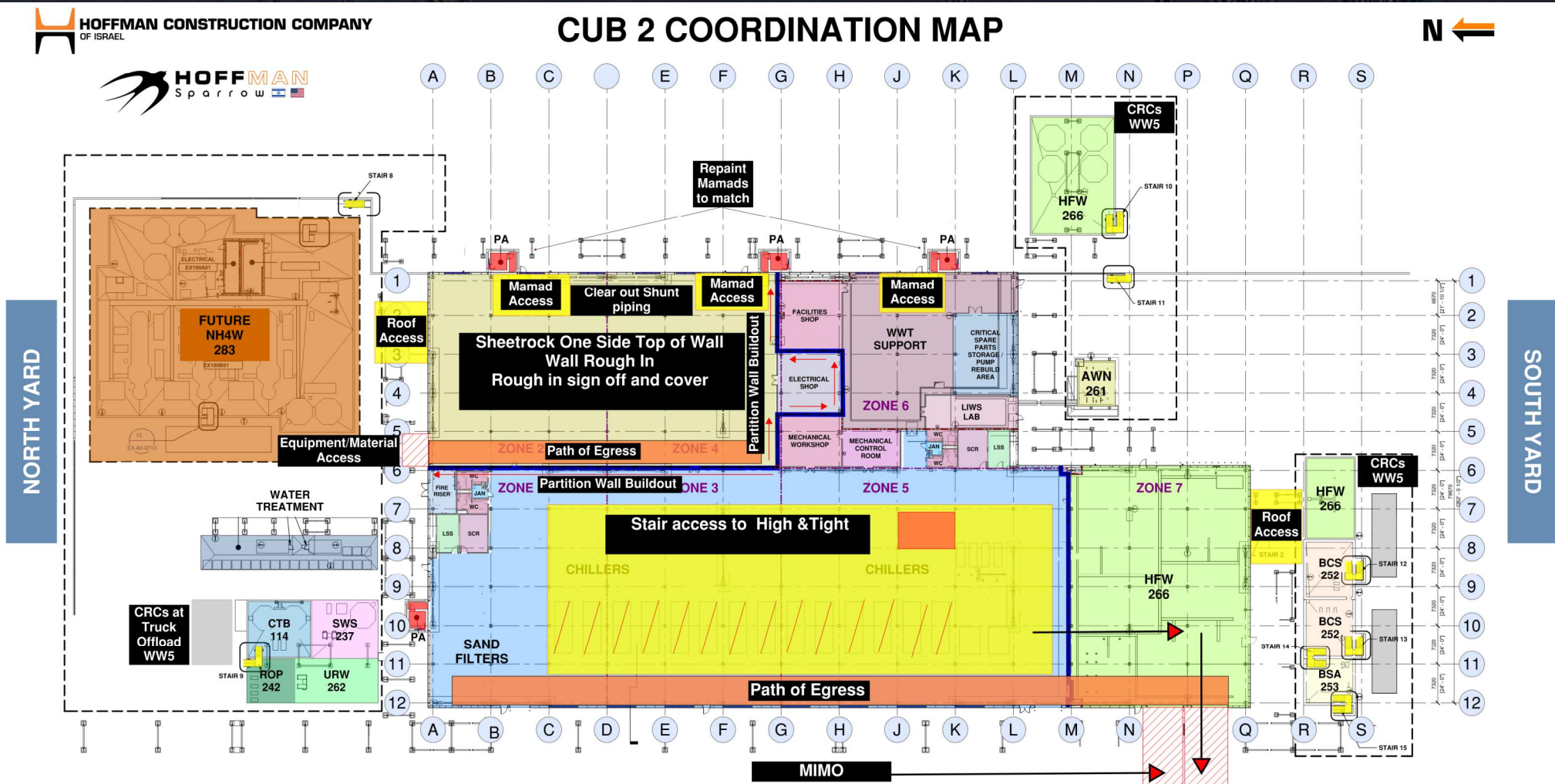
CUB 1





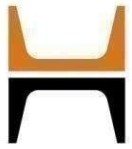
CUB 1 – EXTERIOR/ROOF



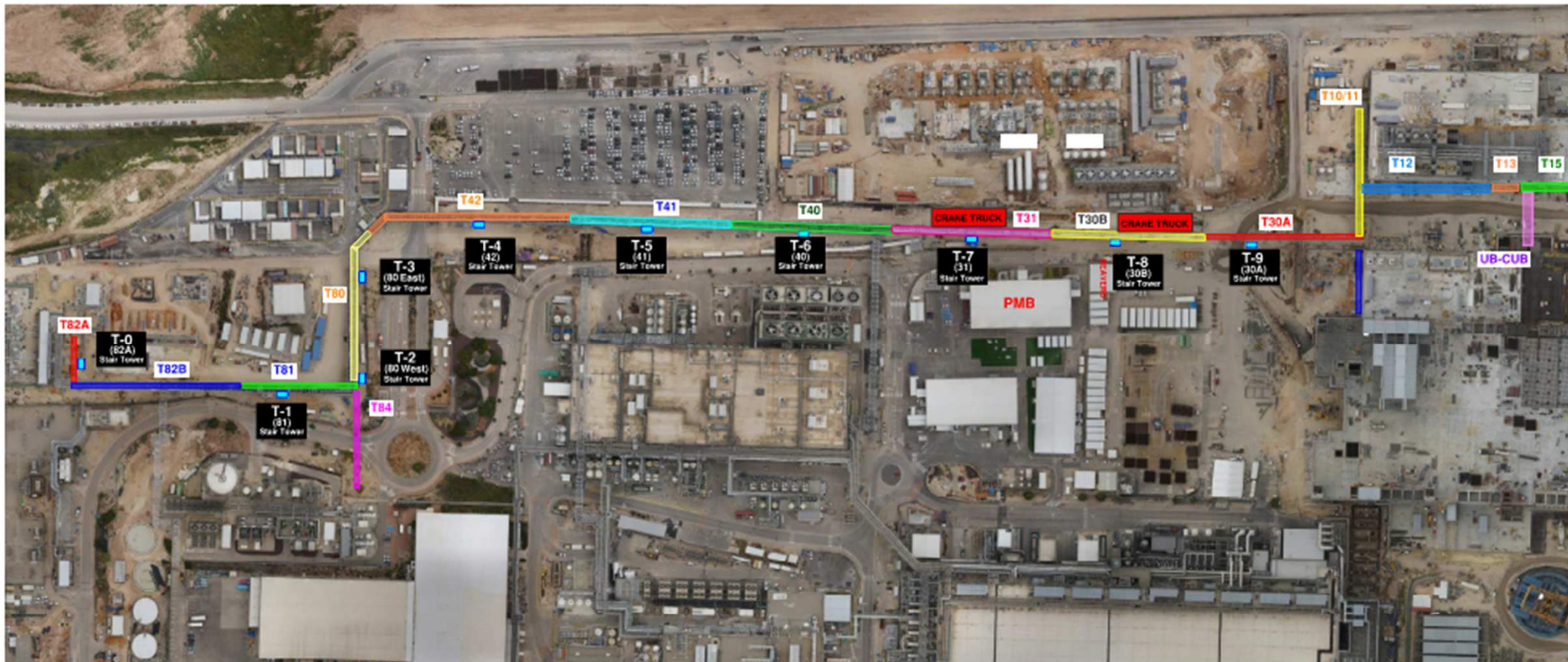


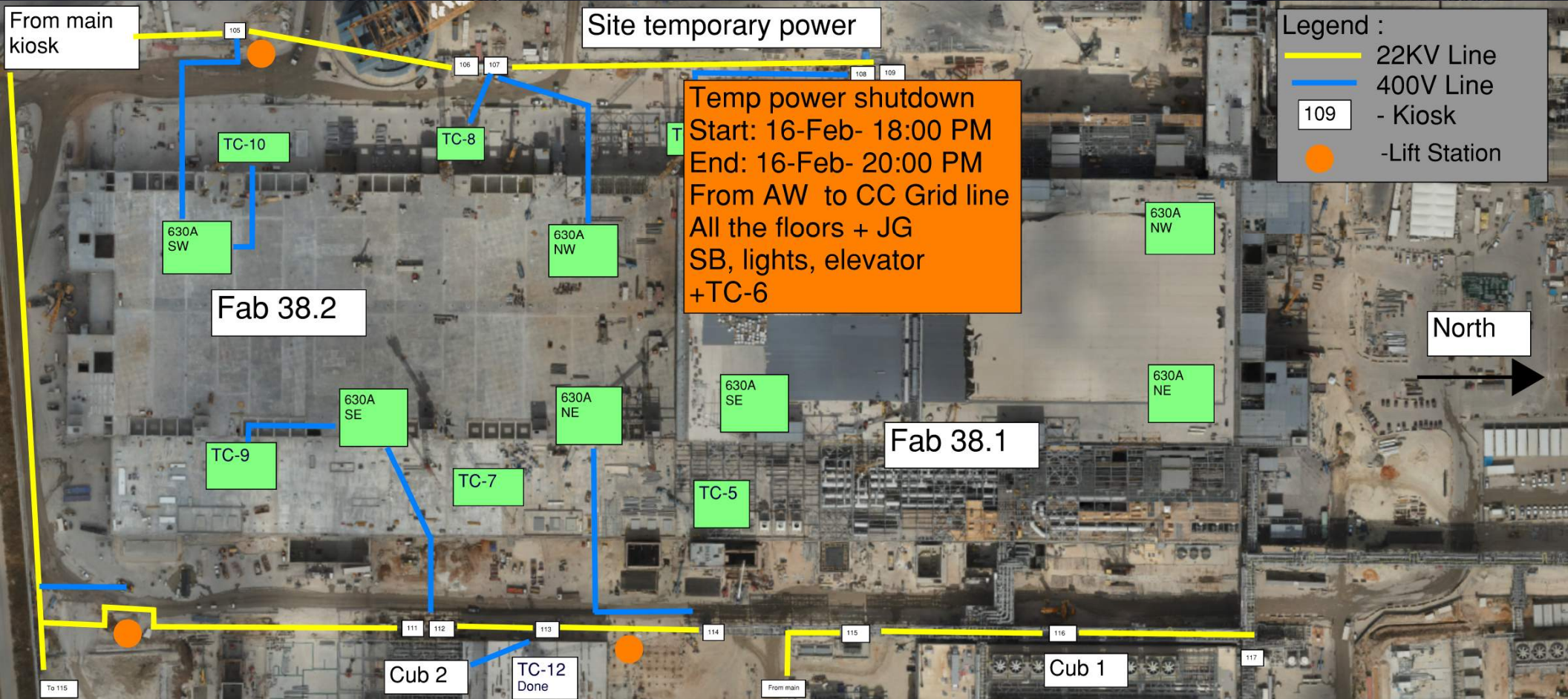
CUB 2 – EXTERIOR/ROOF





HOFFMAN CONSTRUCTION COMPANY







HOFFMAN CONSTRUCTION COMPANY



Daily Coordination Meeting

Site Logistics
North



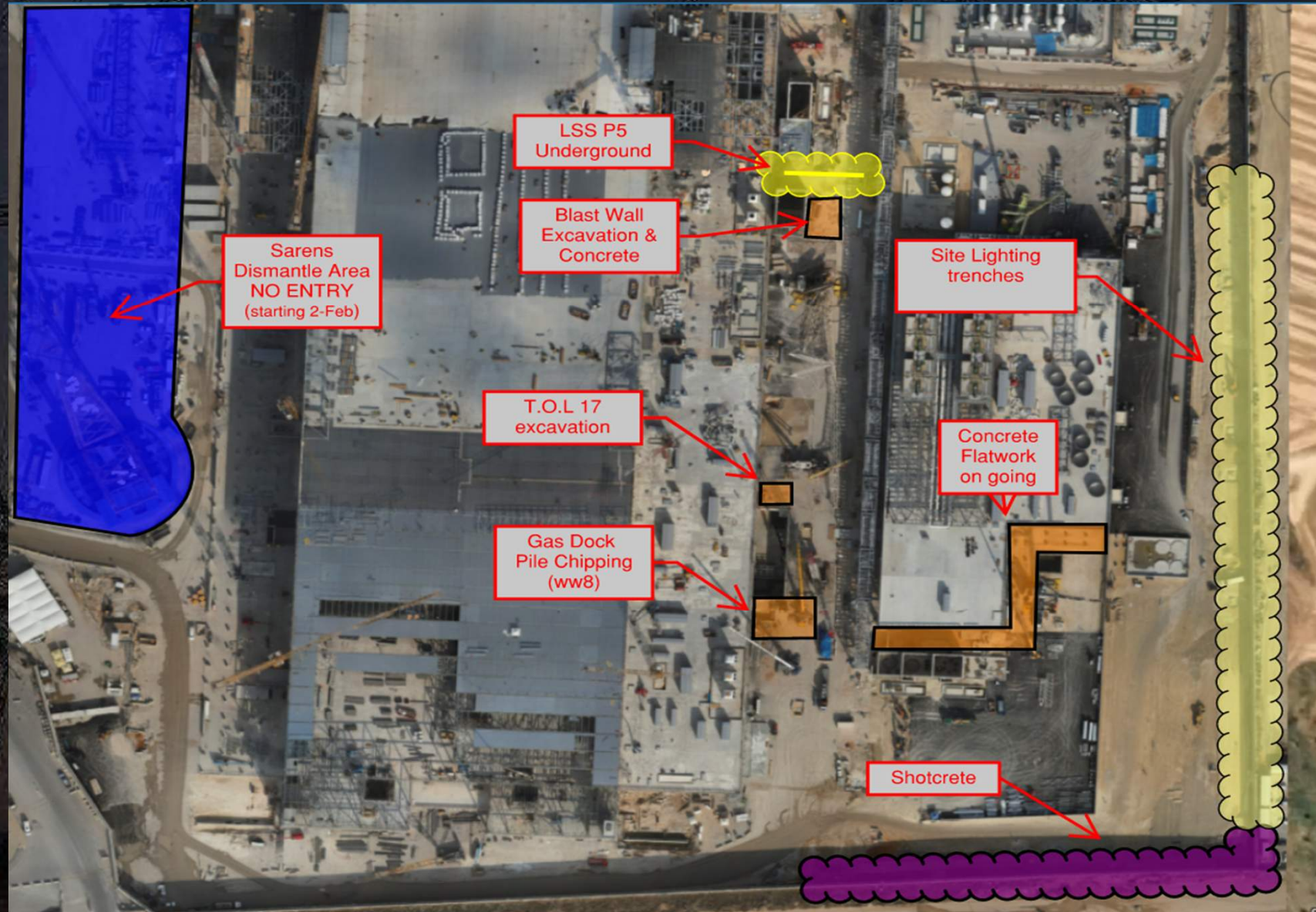


HOFFMAN CONSTRUCTION COMPANY



Daily Coordination Meeting

Site Logistics
South



Fire Prevention

- All personnel engaged in hot work must have fire prevention training. No, this is not new. This has always been a requirement for this site. Check the training matrix.
- Prior to beginning any hot work, combustibles must be removed in an 11 meter radius from the hot work, and they must be removed following the path of the sparks.
- Anything used to protect finished product from sparks must be rated and must be free from oils, solvents, and other flammable liquids.
- If your sparks are falling to a level below, you must have a fire watch at the source of the hot work and where the sparks are falling.
- The hot work permit must be completed and all measures in place—including a subcontractor provided fire extinguisher— prior to starting any hot work.

Daily Coordination Meeting



14:00 Sign In