

Daily Coordination Meeting



14:00 Sign In

Daily Coordination Meeting

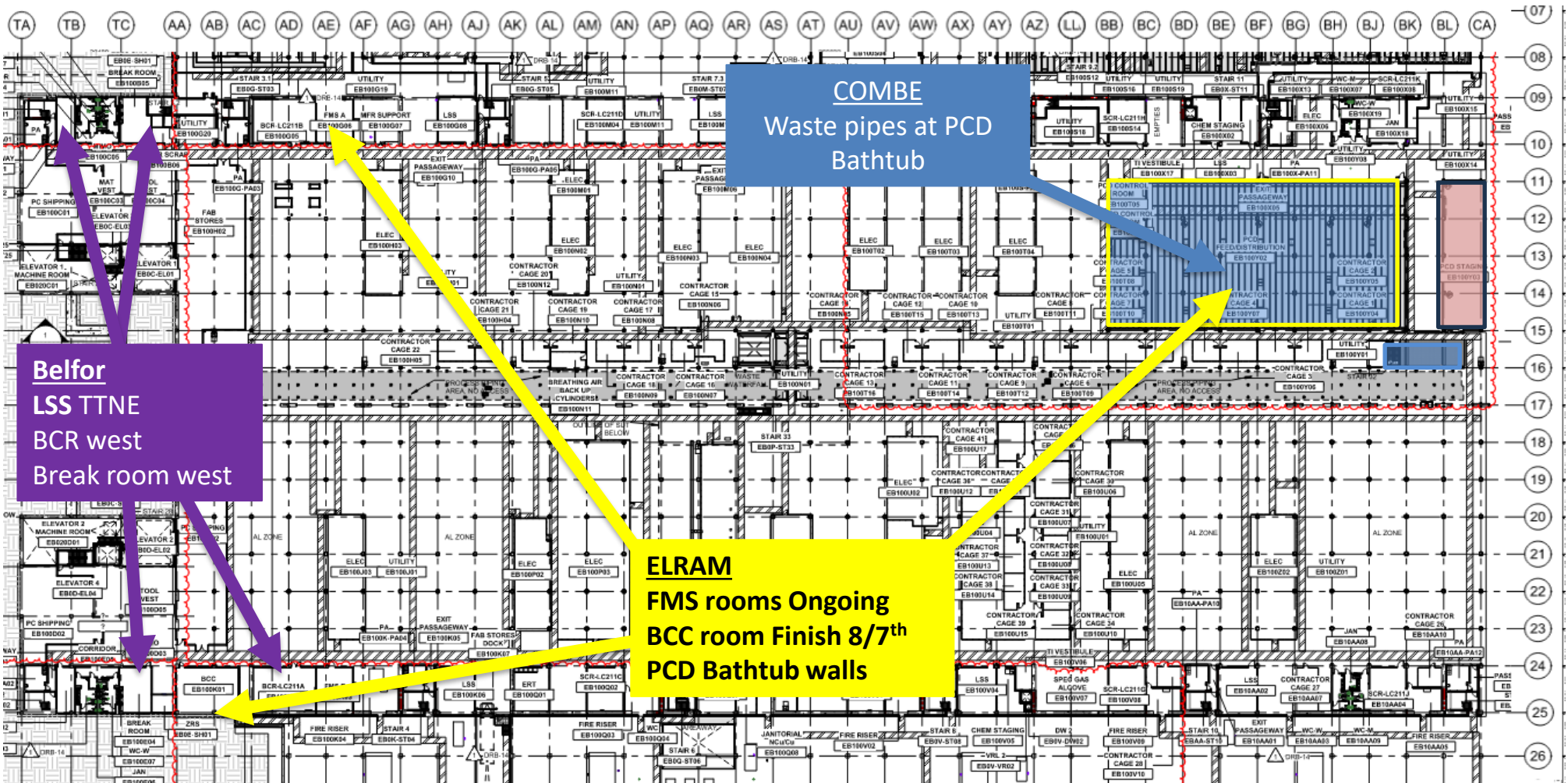
General Topics:

- Back to basics- complacency
- • Power in Fab tomorrow- 33kv
- • Buggy stickers (see QR code)

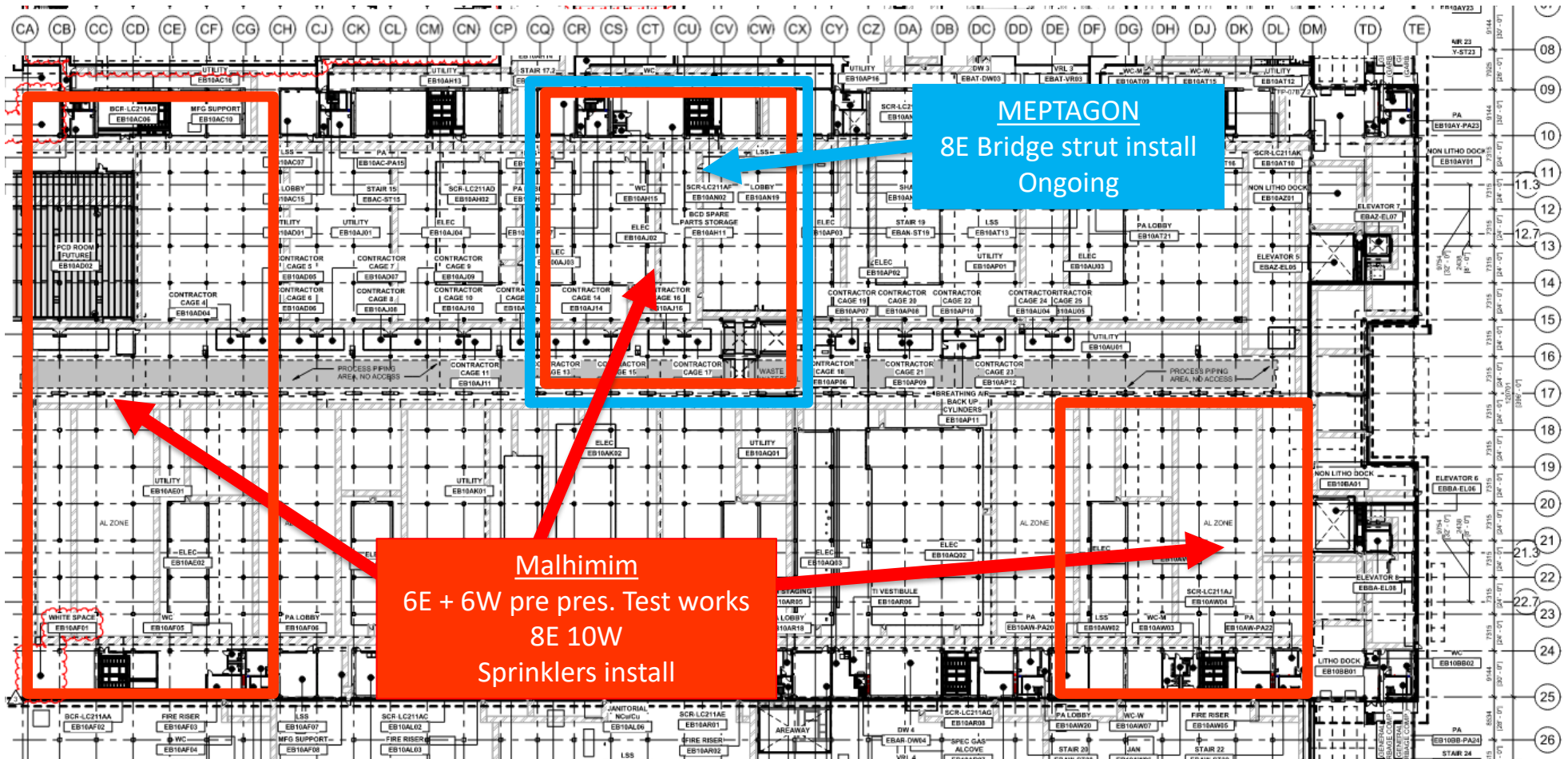




UTILITY LEVEL MOD1

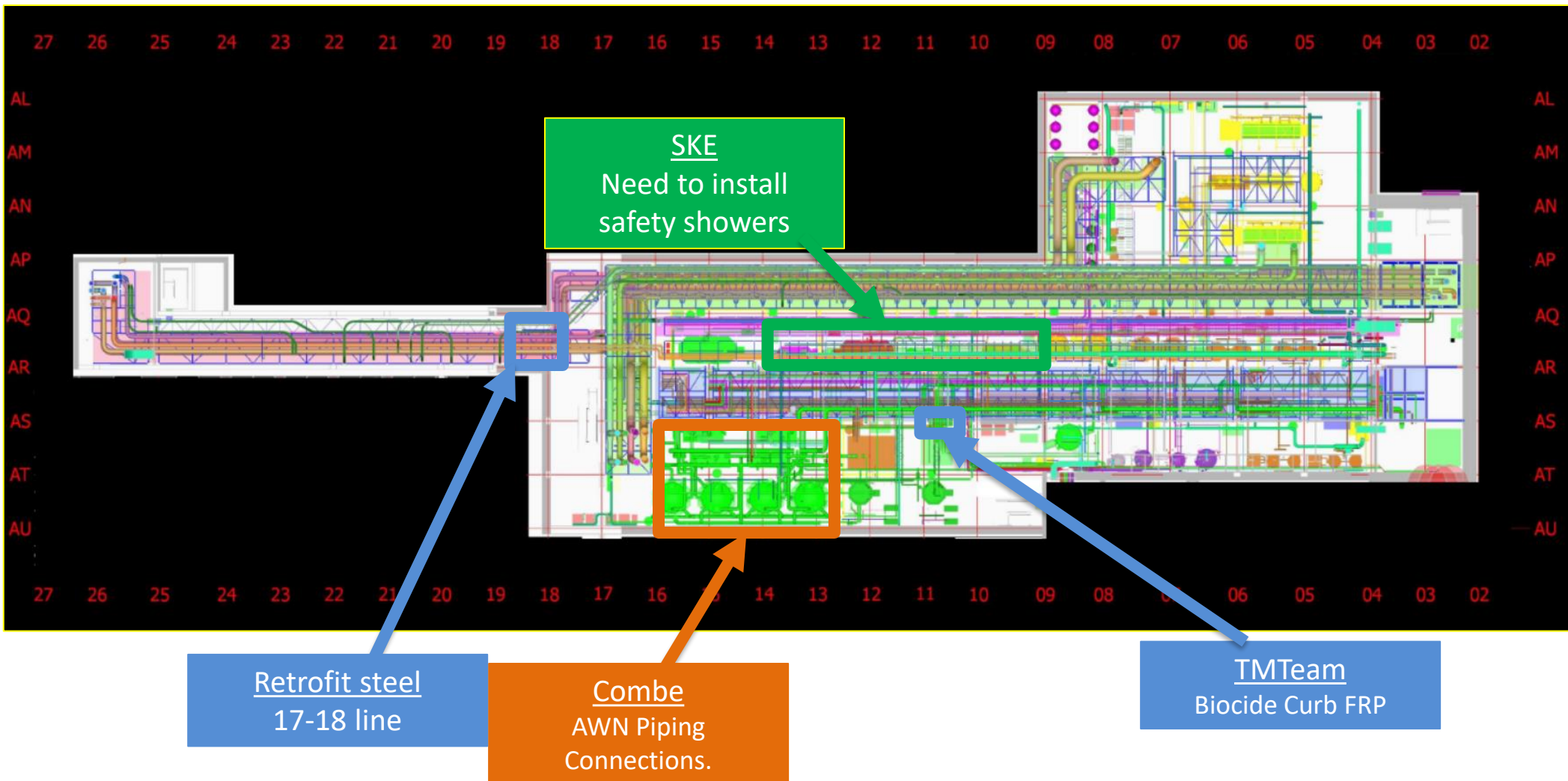


UTILITY LEVEL MOD2



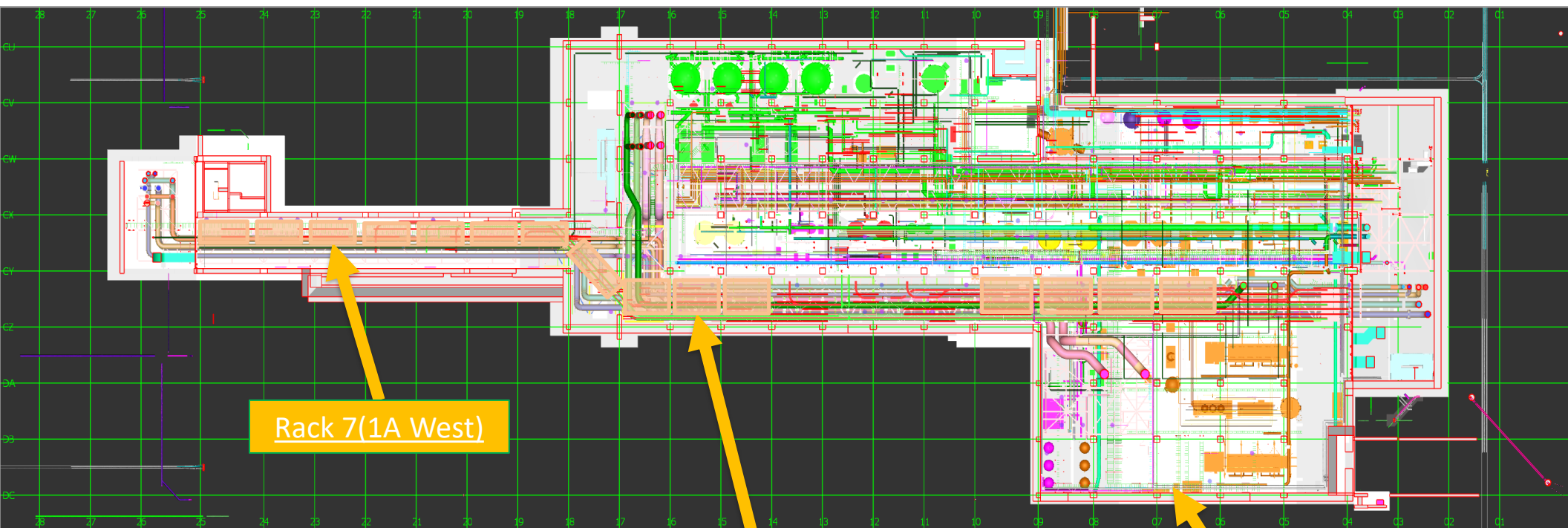


SUT 38.1 LEVEL





SUT 38.2 LEVEL



Rack 7(1A West)

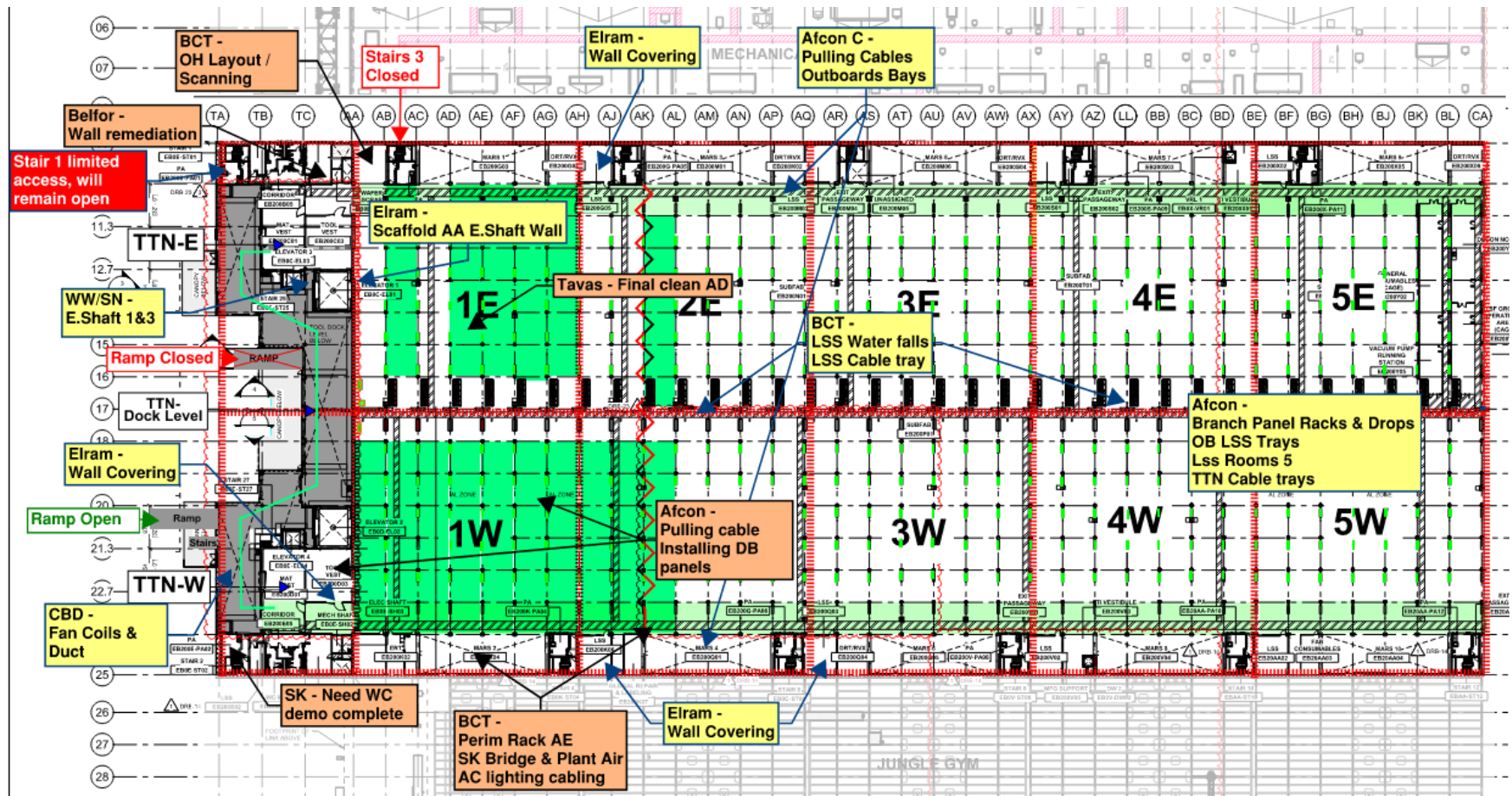
1A Rack
Lifting

8 Rack

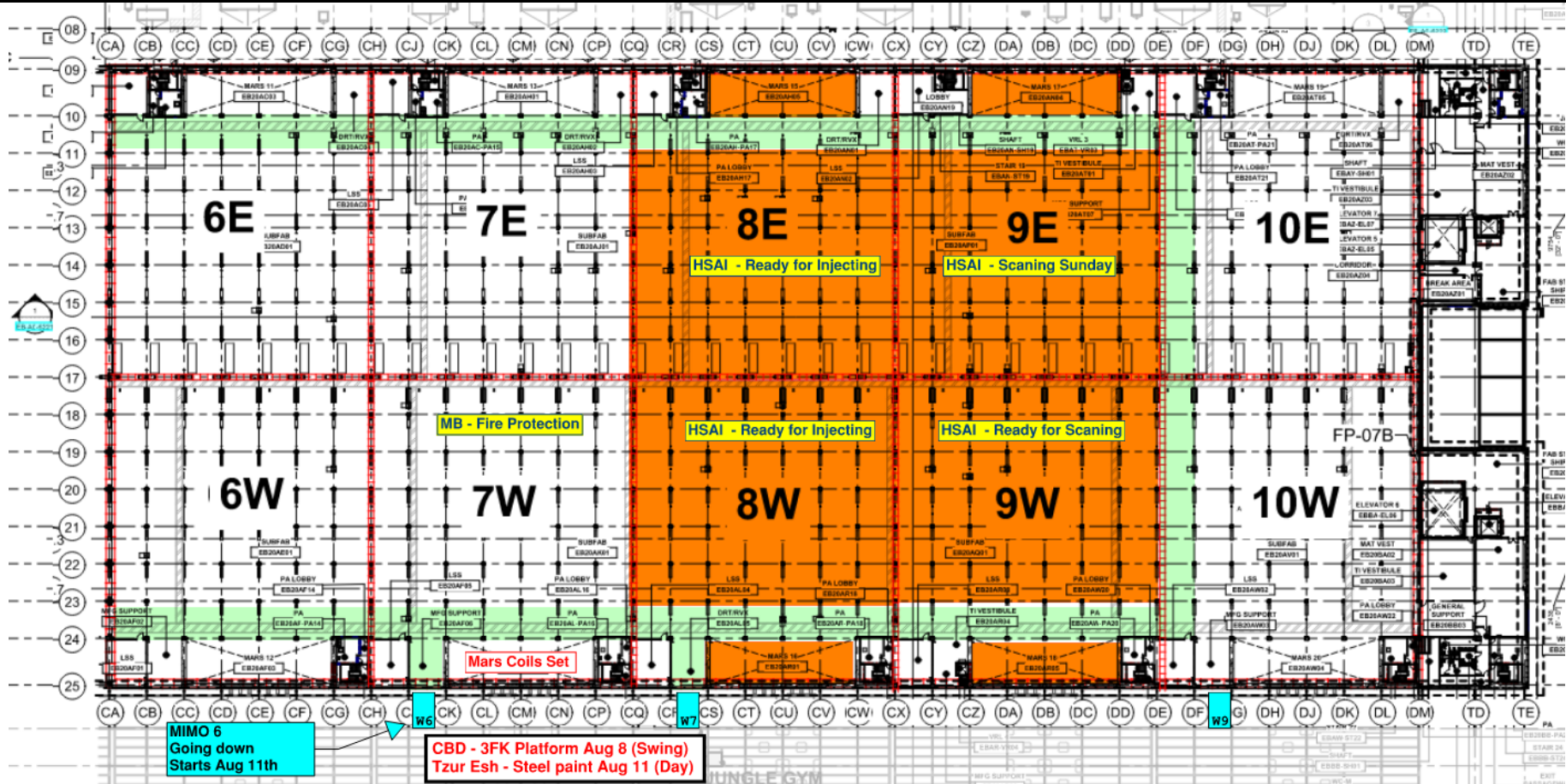
SKE
H&T
CRW
Move-In date ?

Vesda
H&T

SUBFAB BUILDOUT MOD 1



SUBFAB BUILDOUT MOD 2



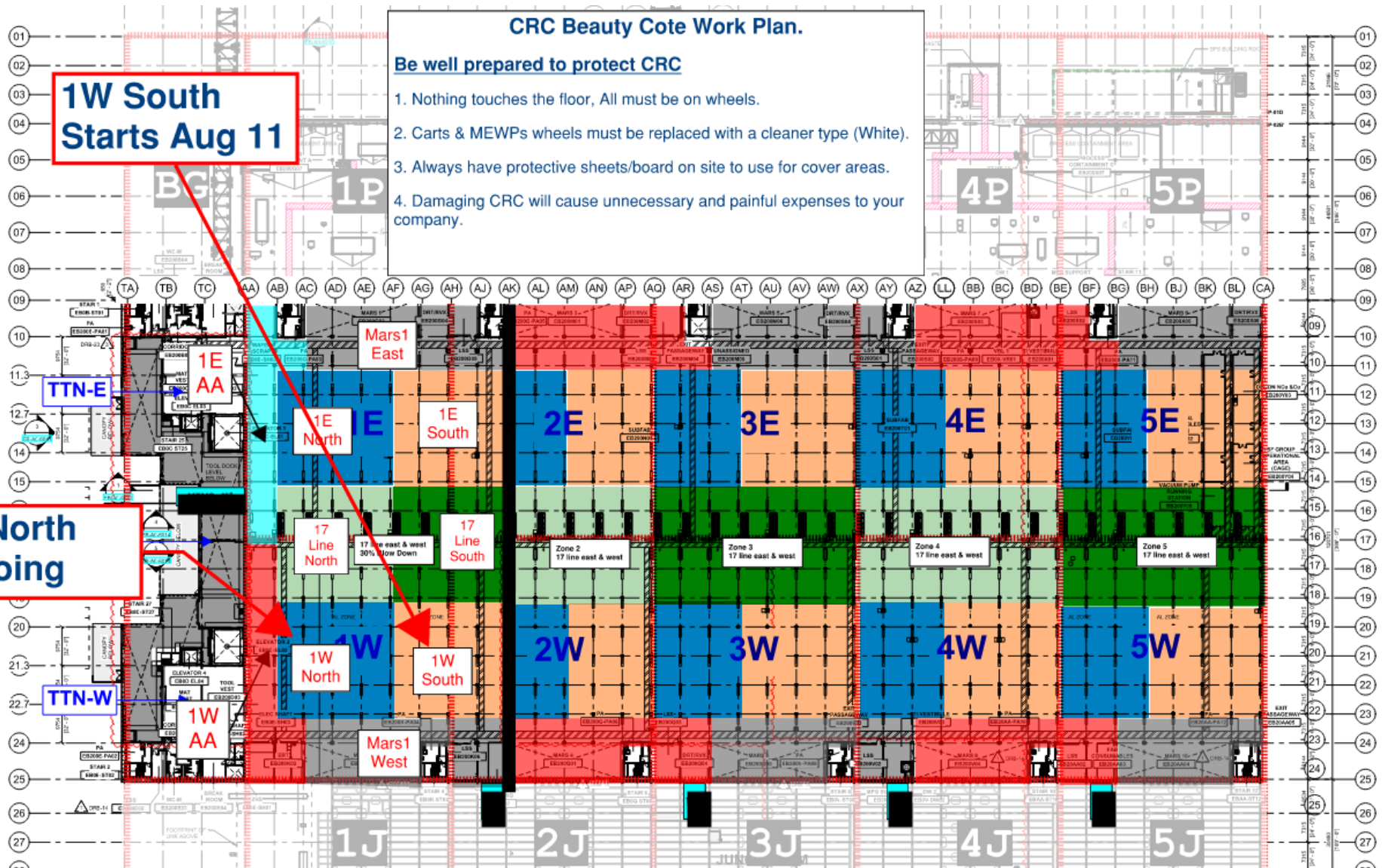
CRC Beauty Cote Work Plan.

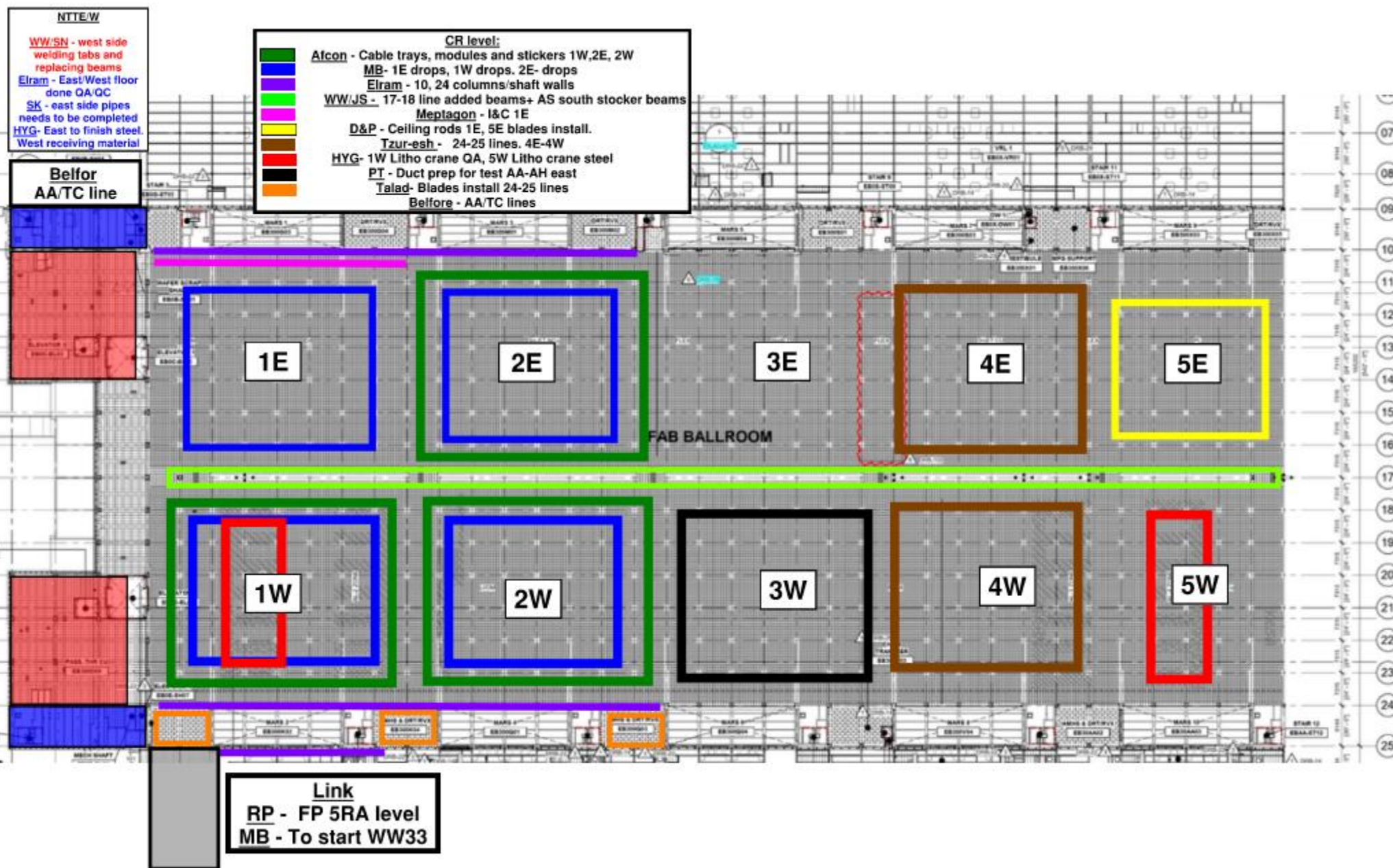
Be well prepared to protect CRC

1. Nothing touches the floor, All must be on wheels.
2. Carts & MEWPs wheels must be replaced with a cleaner type (White).
3. Always have protective sheets/board on site to use for cover areas.
4. Damaging CRC will cause unnecessary and painful expenses to your company.

**1W South
Starts Aug 11**

**1W North
Ongoing**

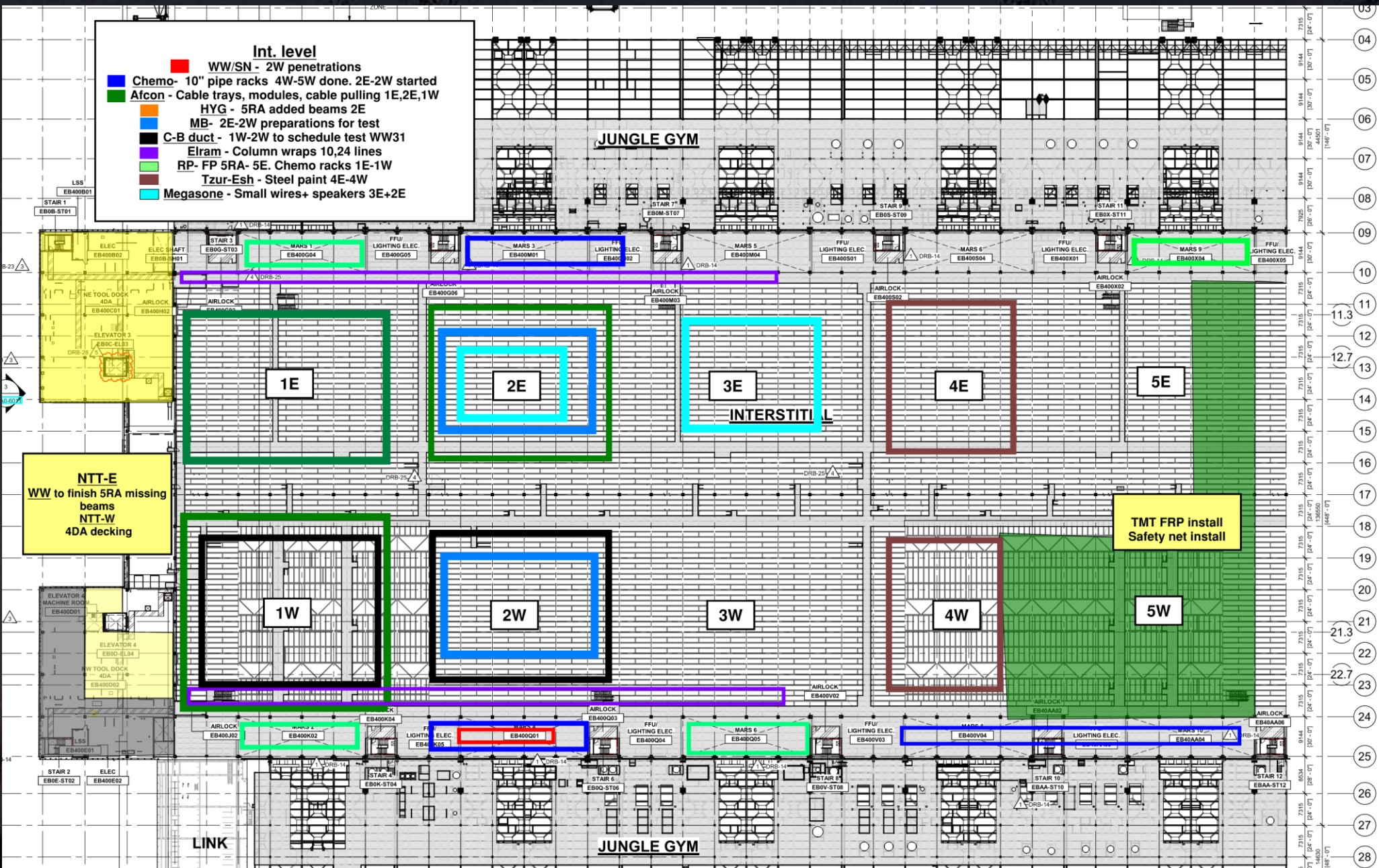


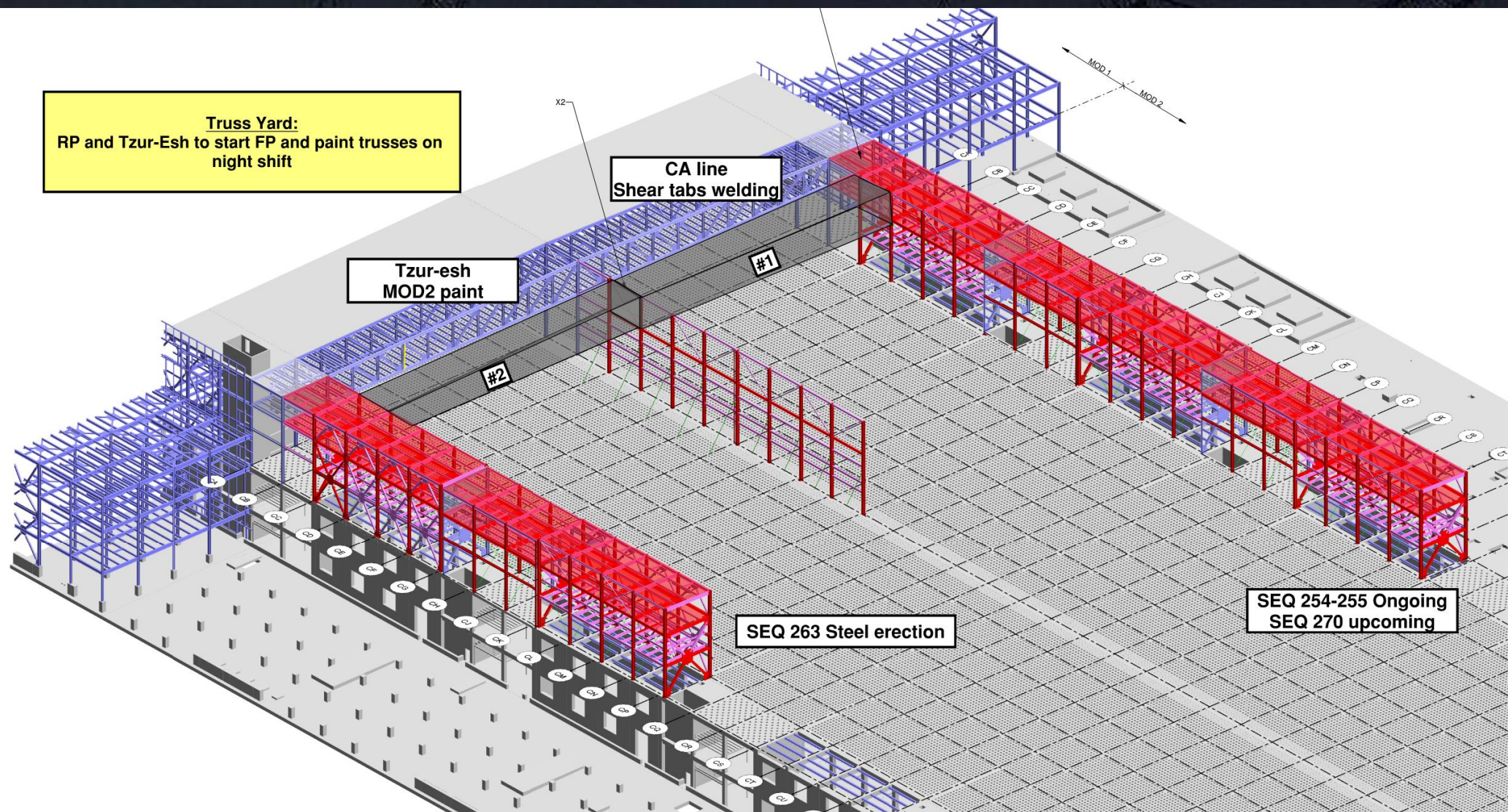


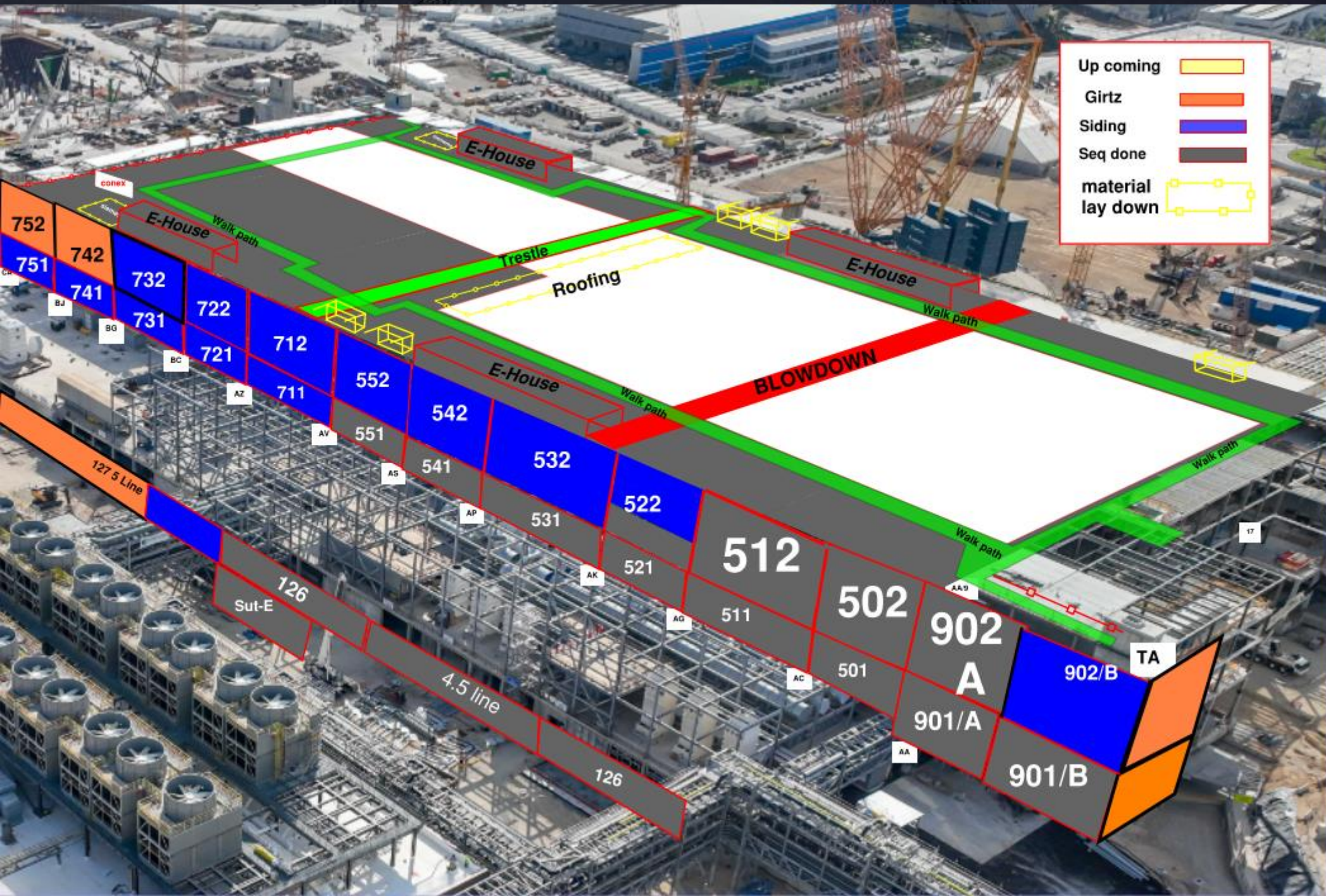


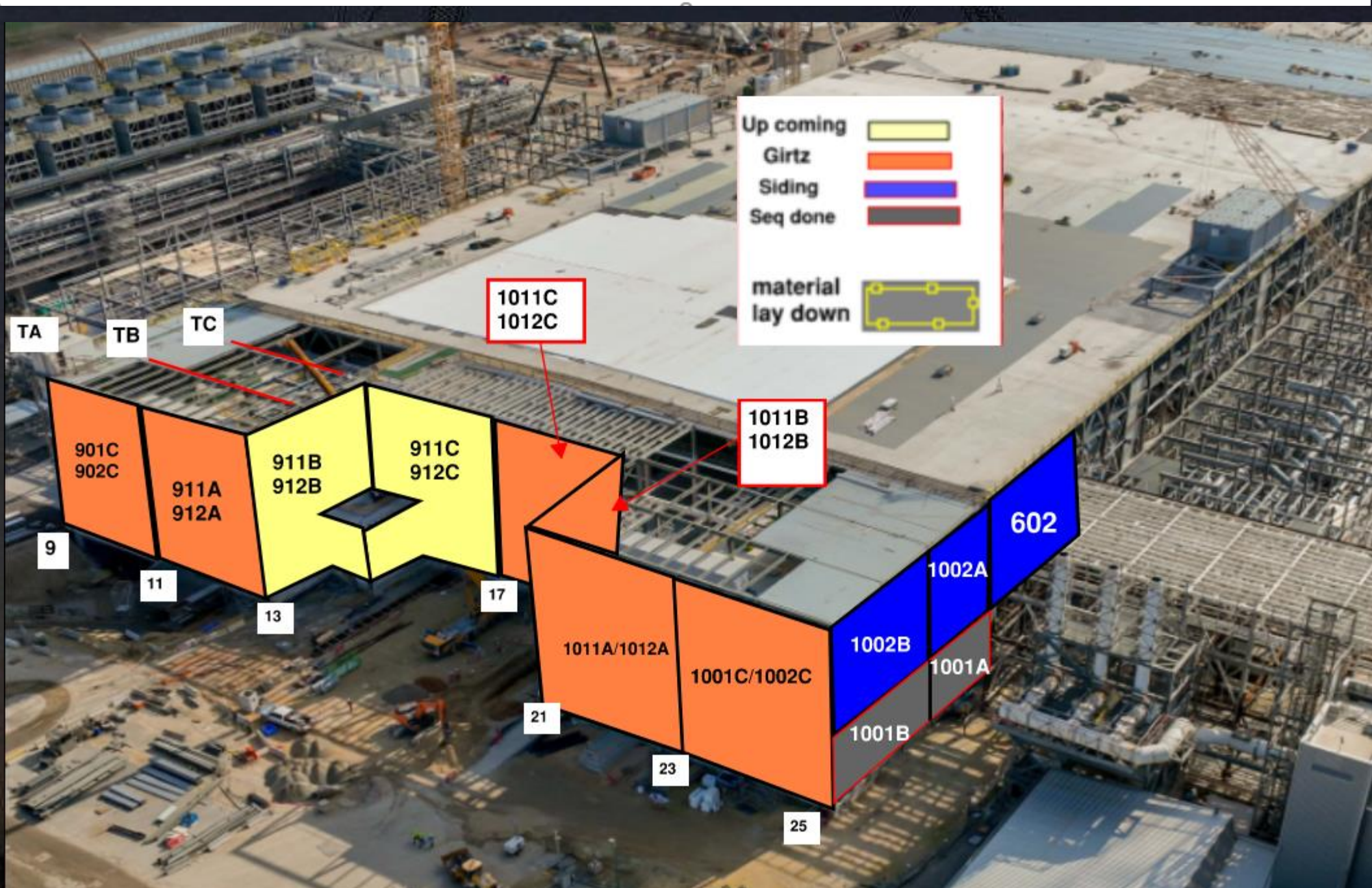
Int. level

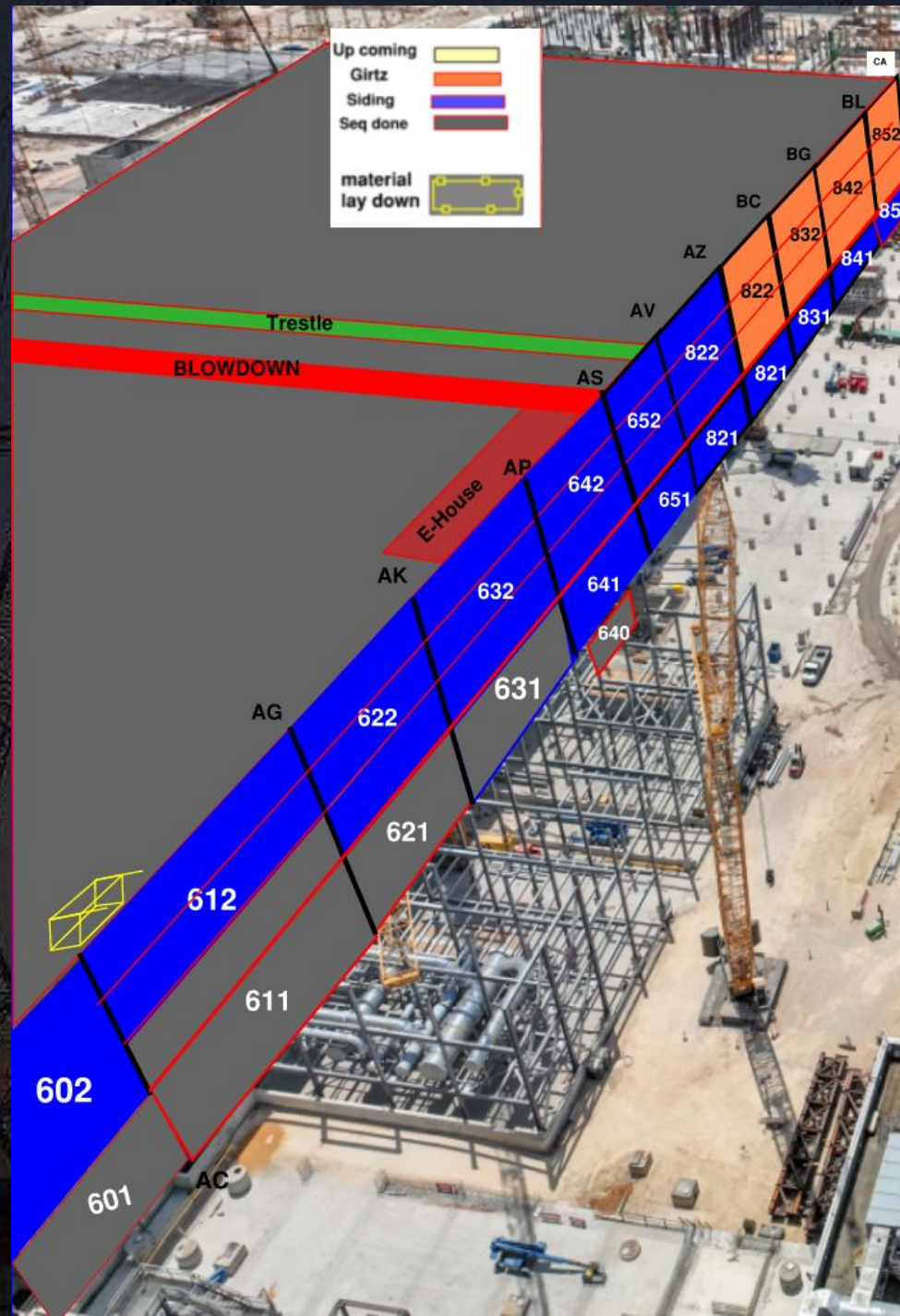
- WW/SN - 2W penetrations
- Chemo- 10" pipe racks 4W-5W done. 2E-2W started
- Afcon - Cable trays, modules, cable pulling 1E,2E,1W
- HYG - 5RA added beams 2E
- MB- 2E-2W preparations for test
- C-B duct - 1W-2W to schedule test WW31
- Elram - Column wraps 10,24 lines
- RP- FP 5RA- 5E. Chemo racks 1E-1W
- Tzur-Esh - Steel paint 4E-4W
- Megasone - Small wires+ speakers 3E+2E







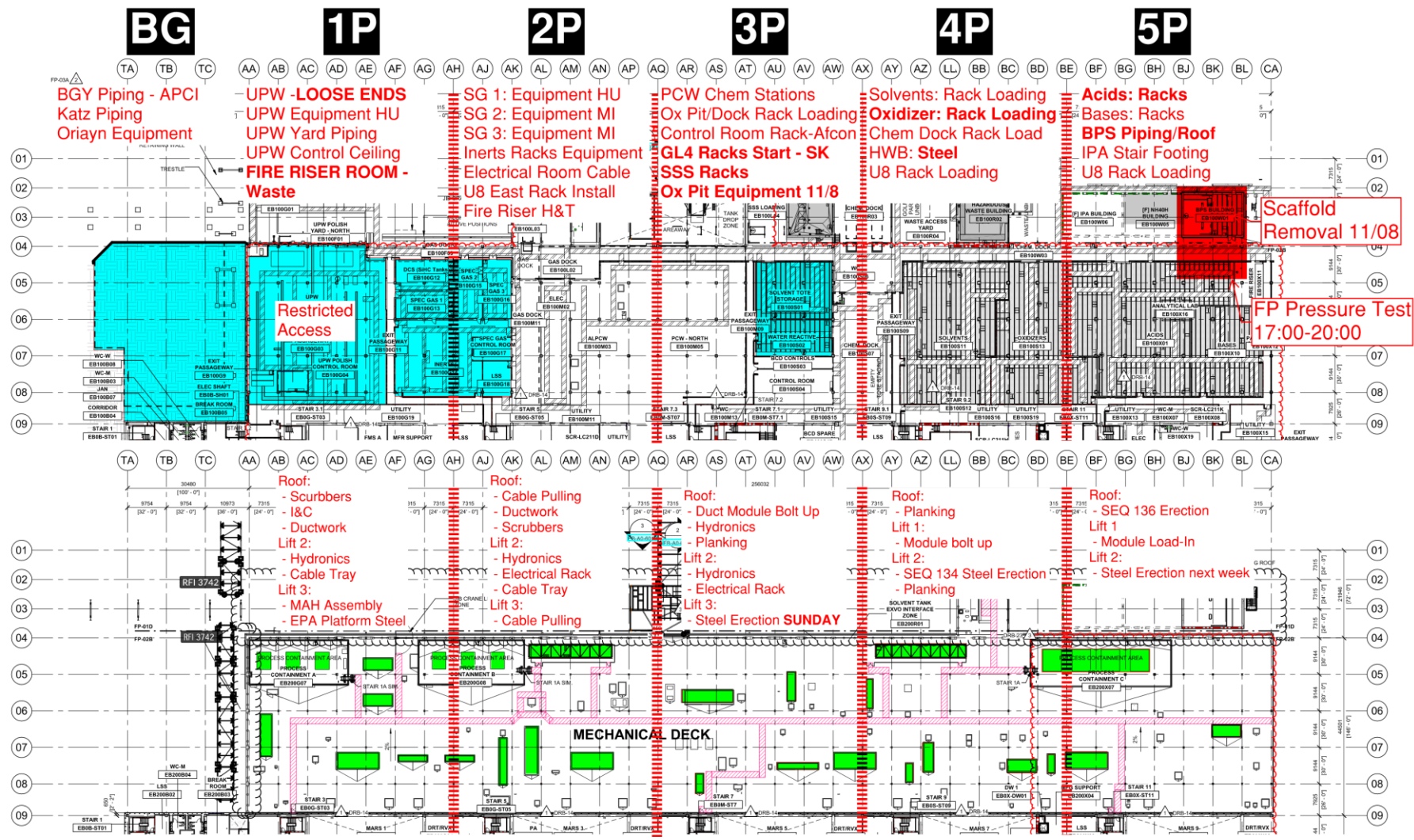




PSSS.1

Utility Level
1YA

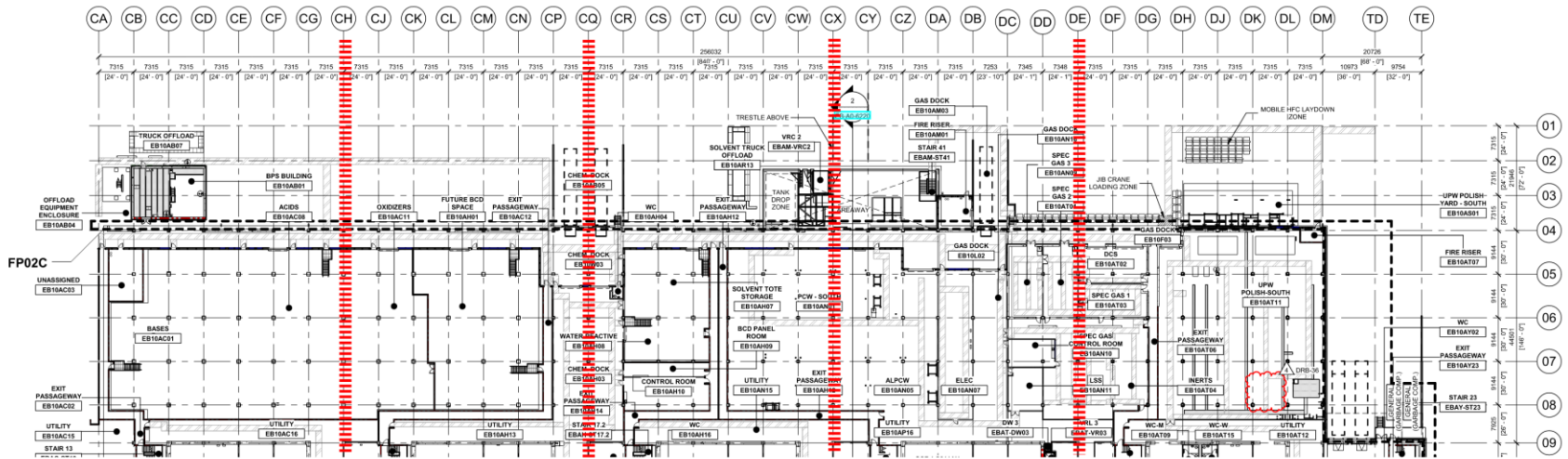
PSSS Roof
2SA



PSSS.2

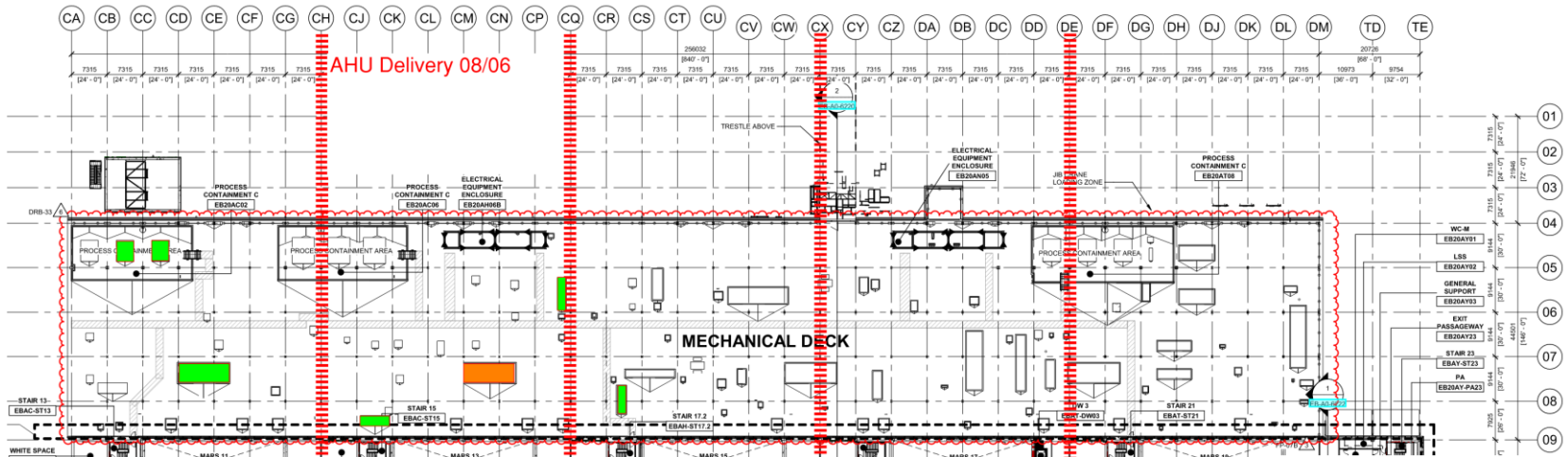
10P

Utility Level 1YA



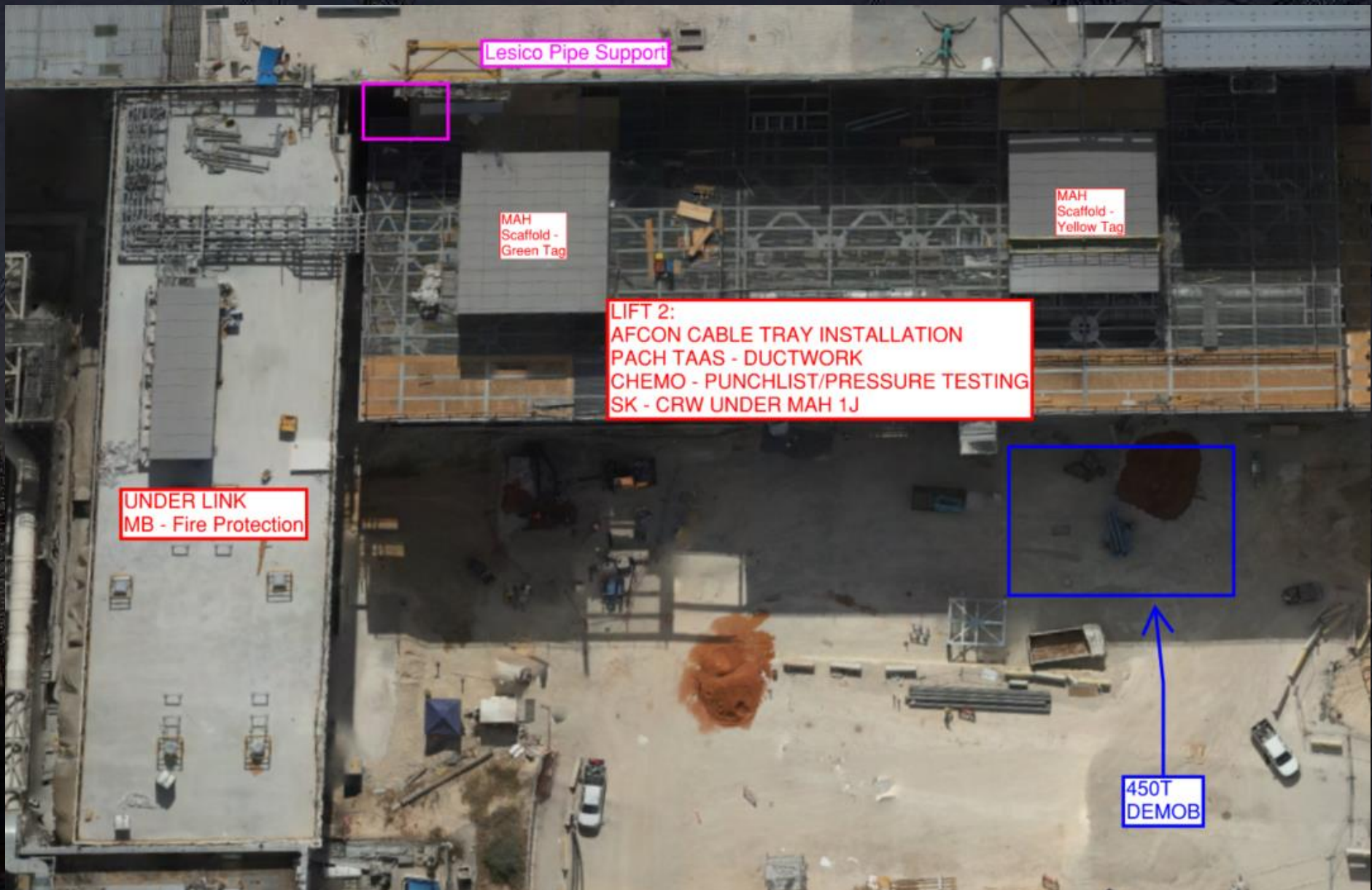
PSSS Roof 2SA

AHU Delivery 08/06



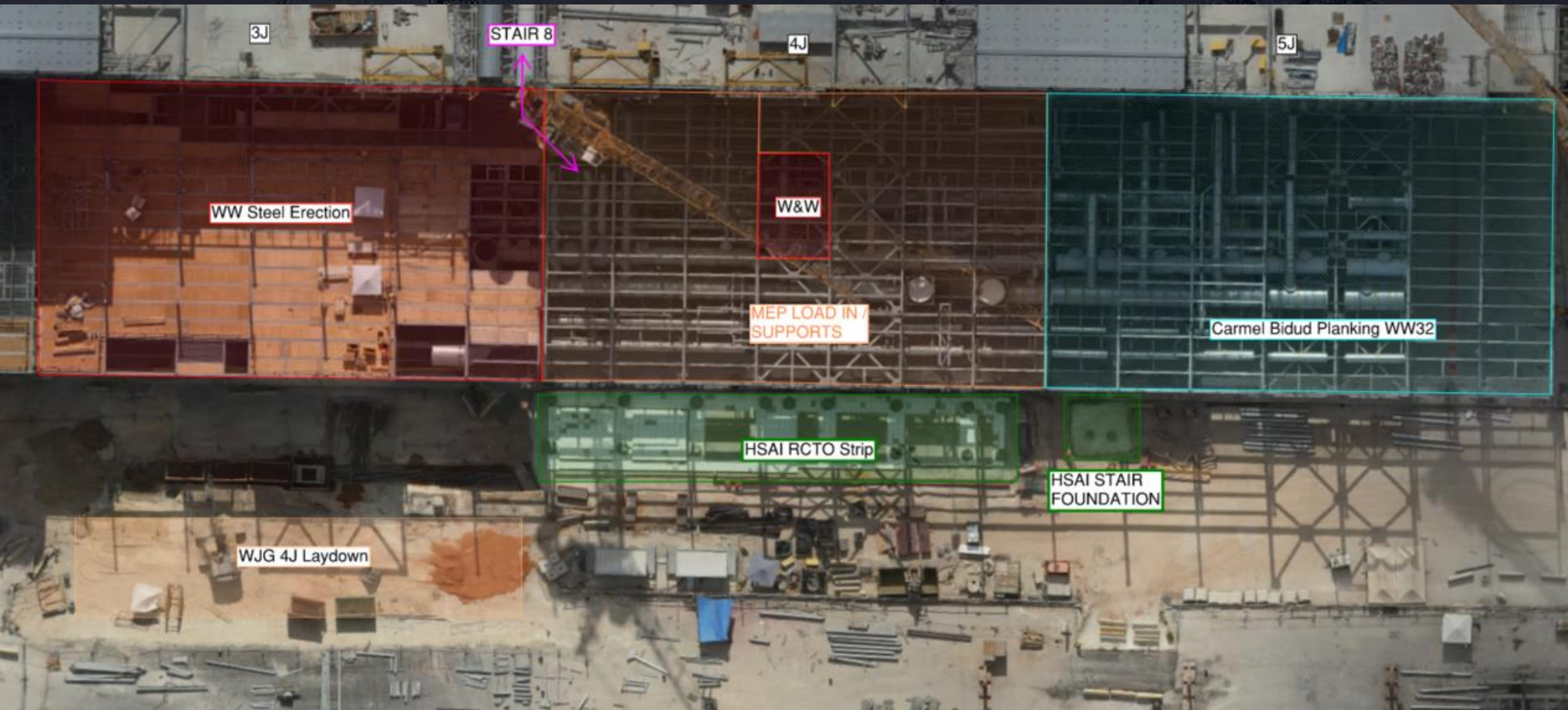


WJG 01J, 02J LIFT 2 & 3



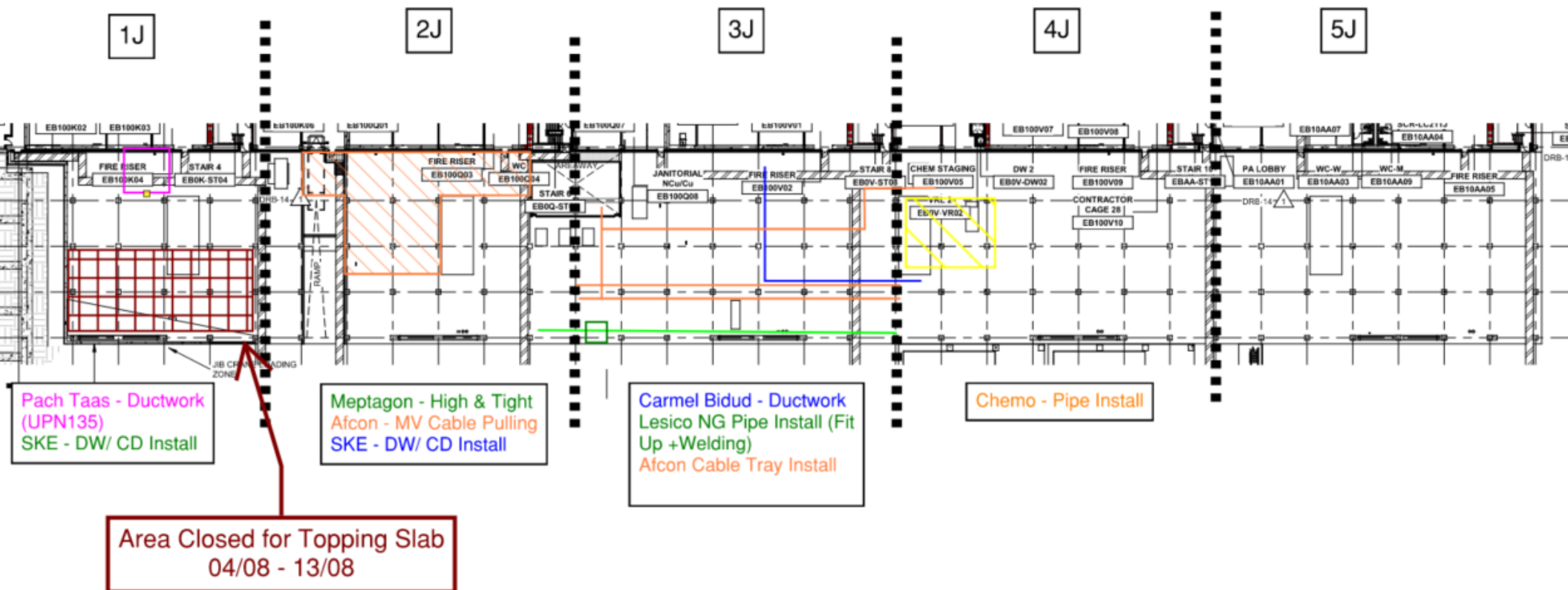


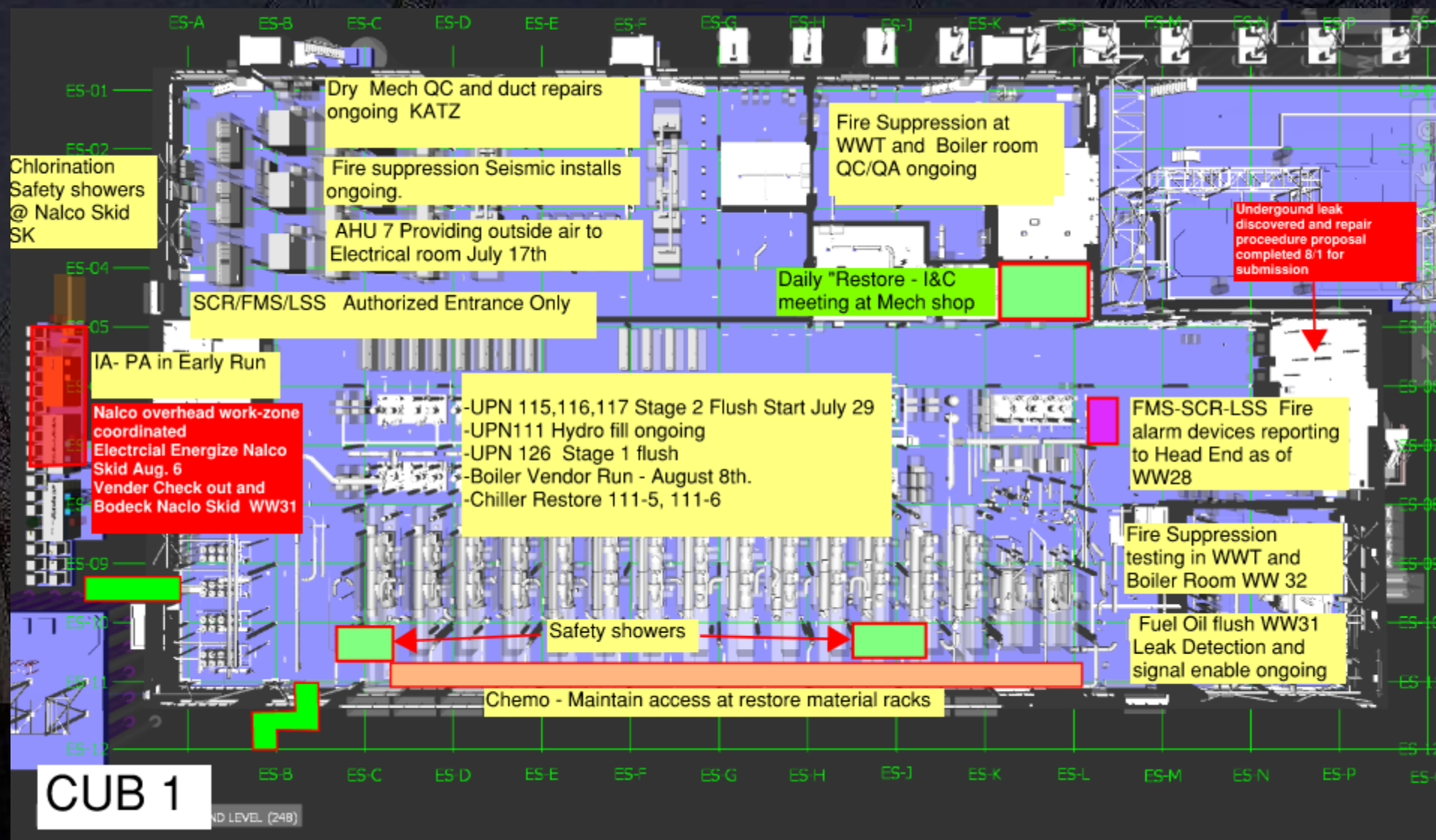
WJG 03J, 04J, 05J LIFT 2 & 3

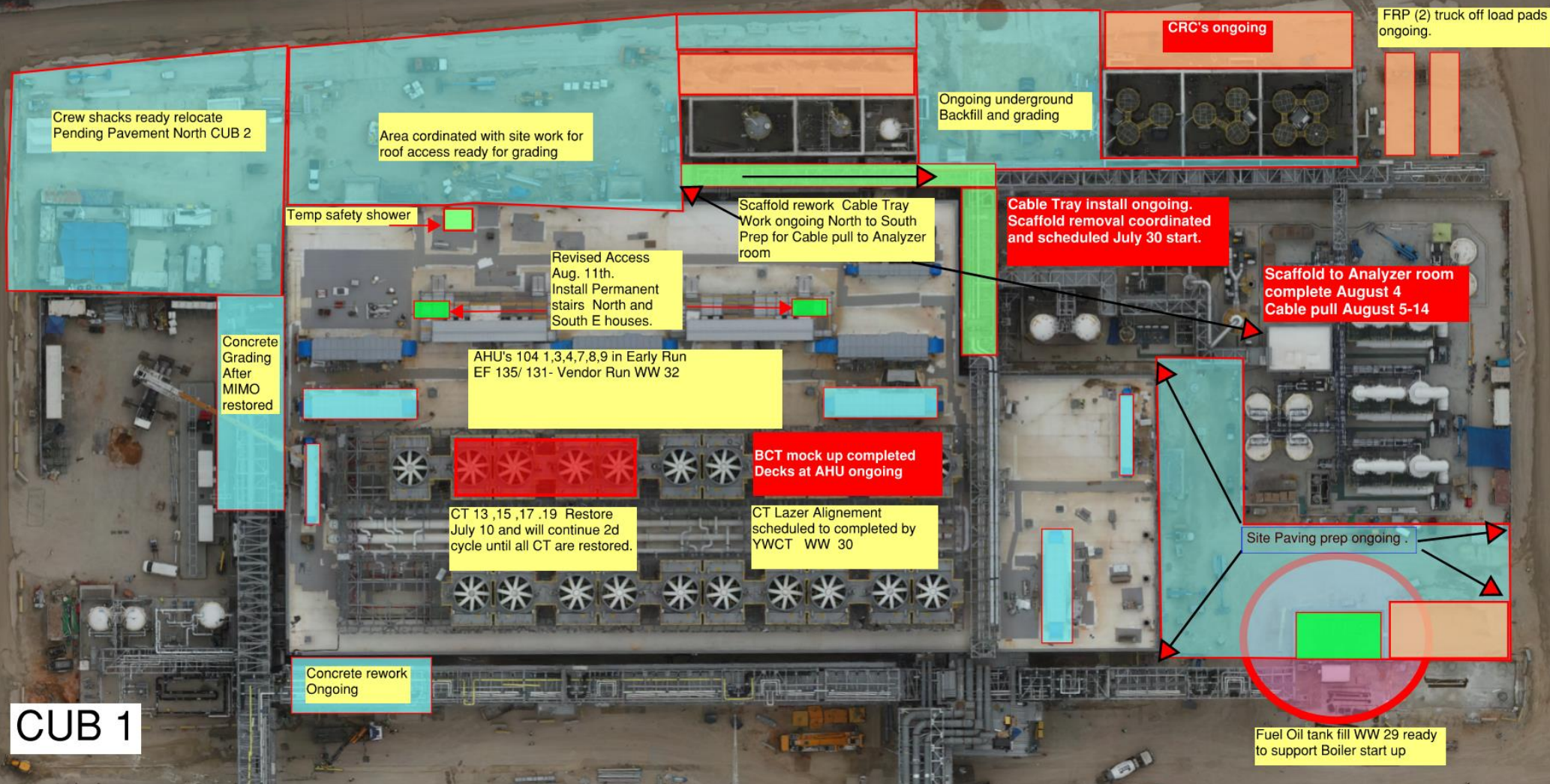


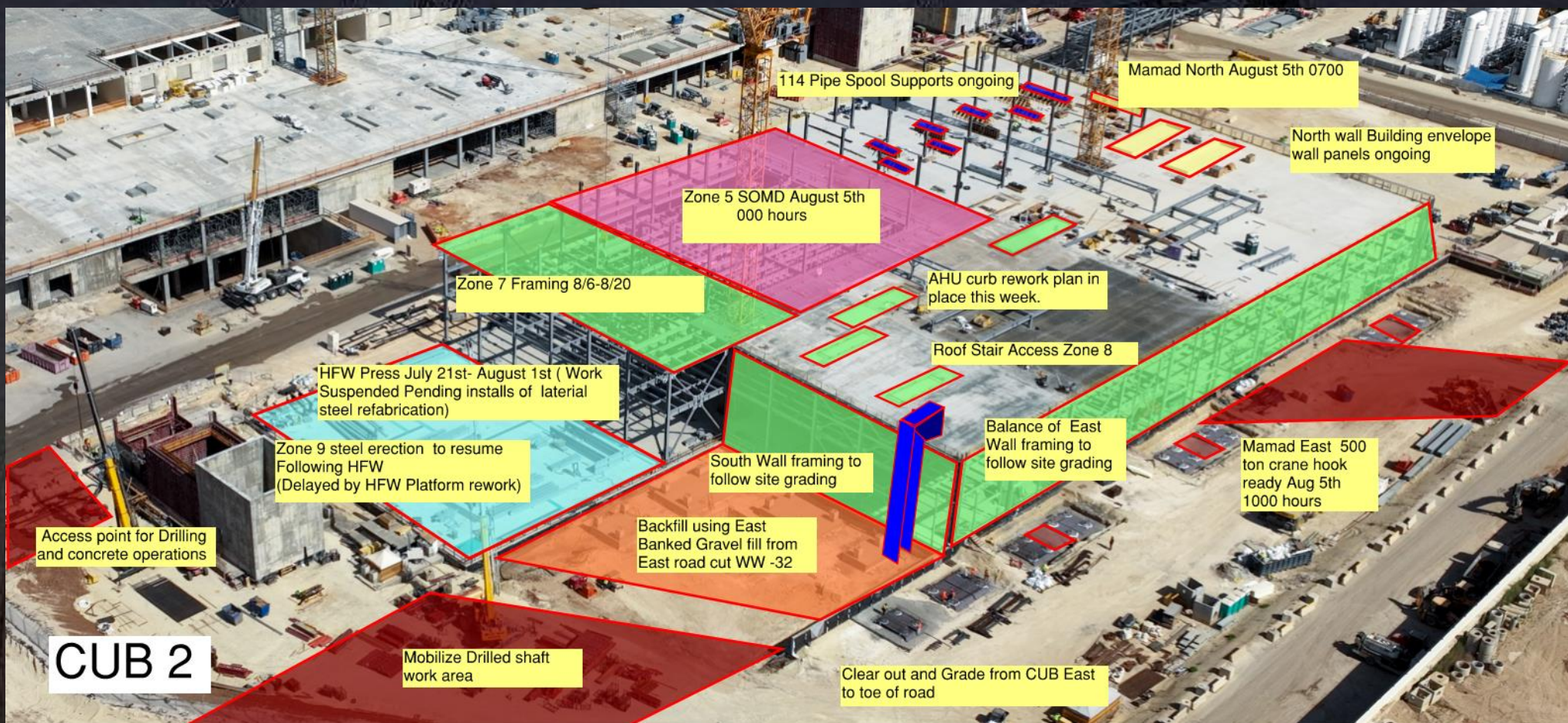


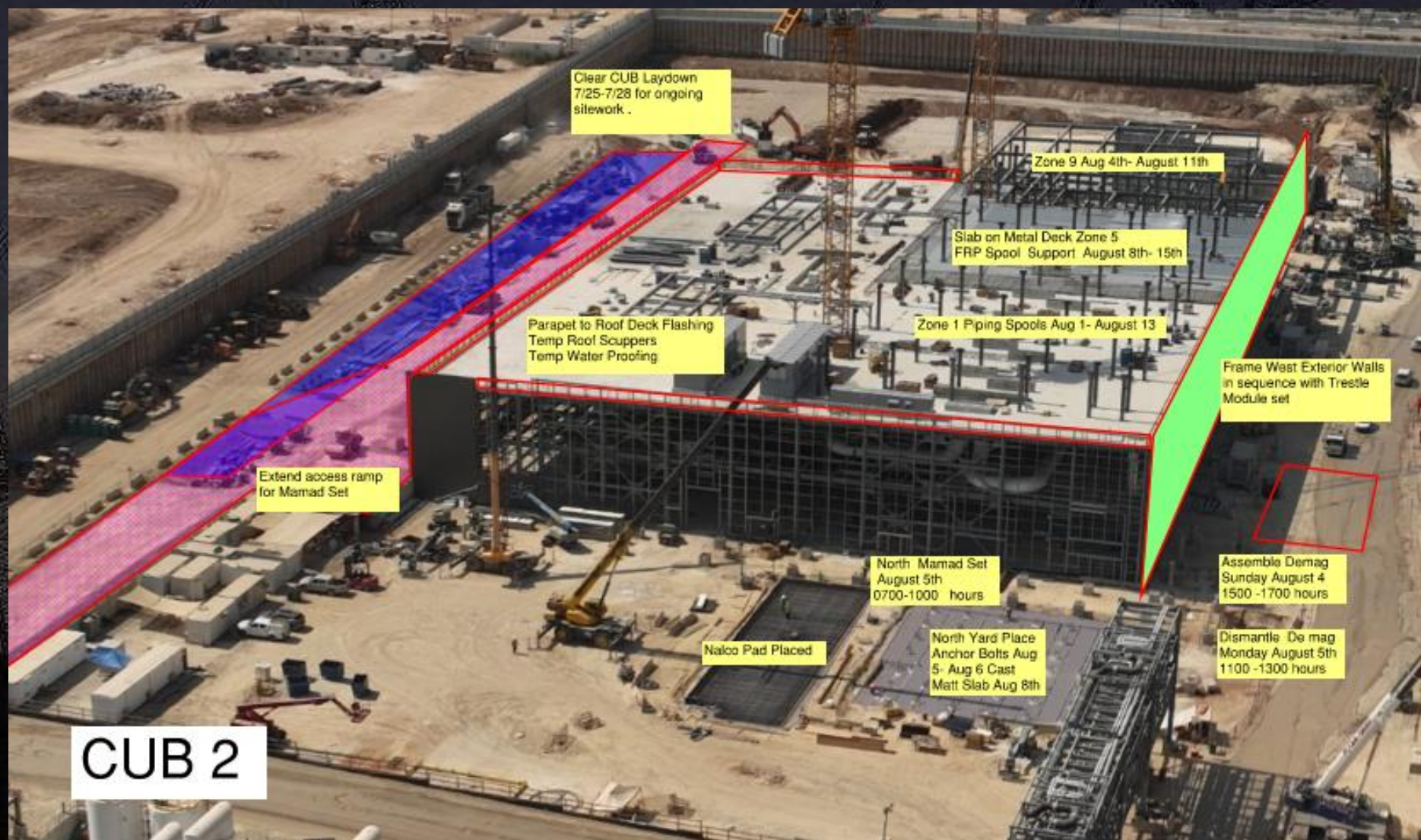
WJG UTILITY LEVEL BUILD OUT









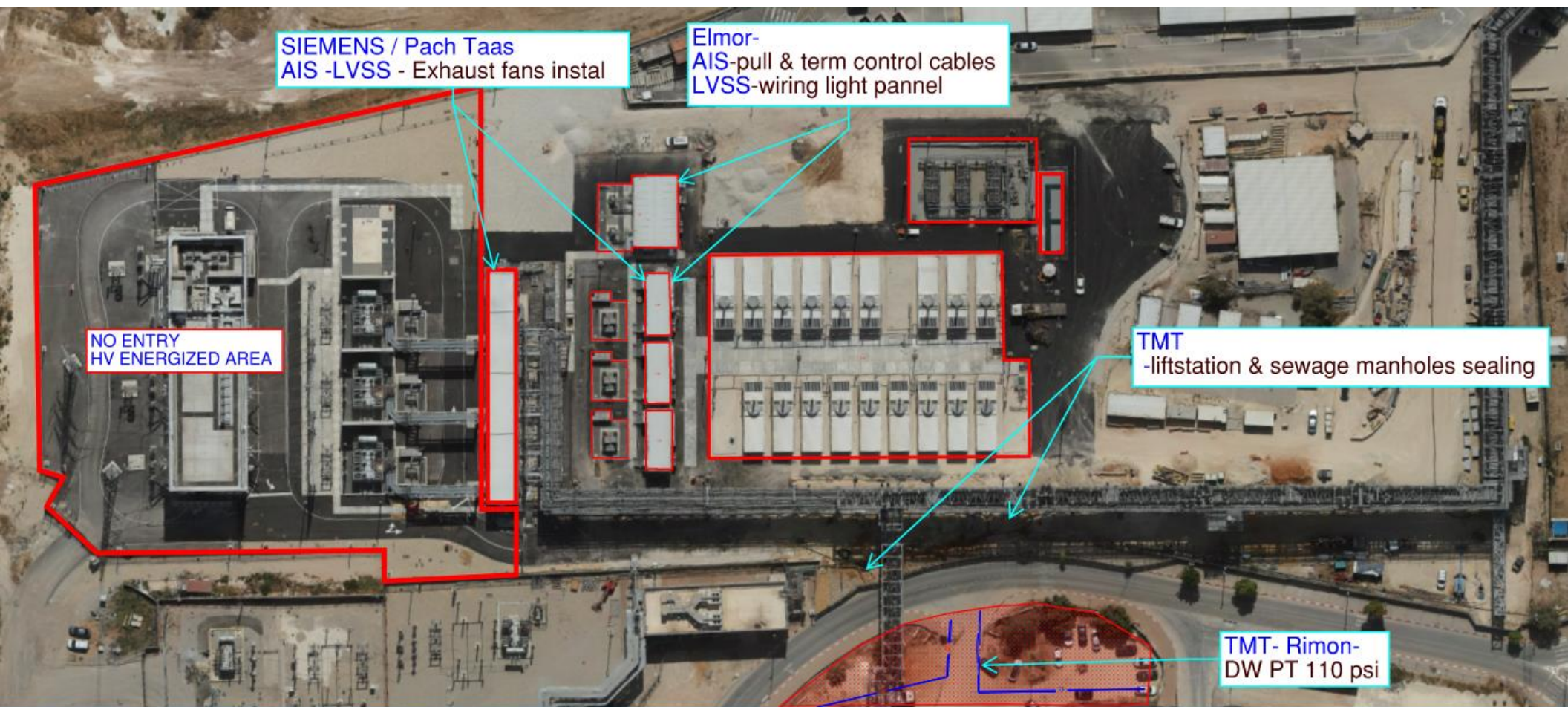




INSTRUMENT AIR PRESSURE TEST - NORTH YARD CUB1 - 17:00-22:00 - AUGUST 7TH

EXCLUSION ZONE





SIEMENS / Pach Taas
AIS -LVSS - Exhaust fans instal

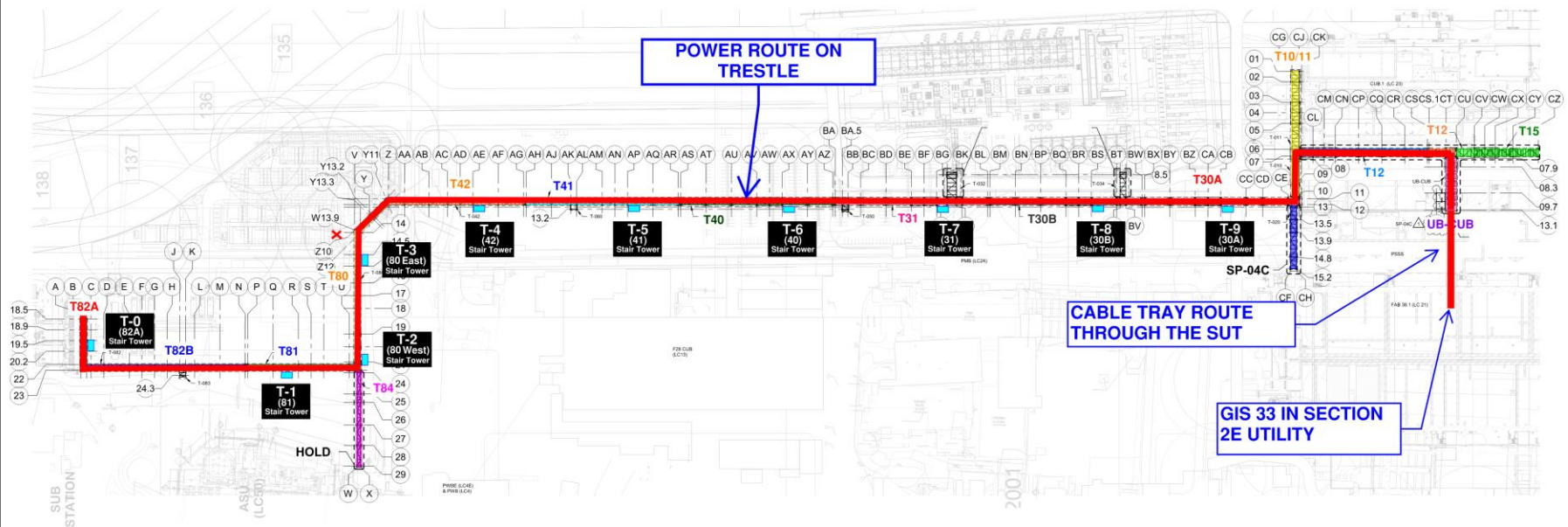
Elmor-
AIS-pull & term control cables
LVSS-wiring light pannel

NO ENTRY
HV ENERGIZED AREA

TMT
-liftstation & sewage manholes sealing

TMT- Rimon-
DW PT 110 psi

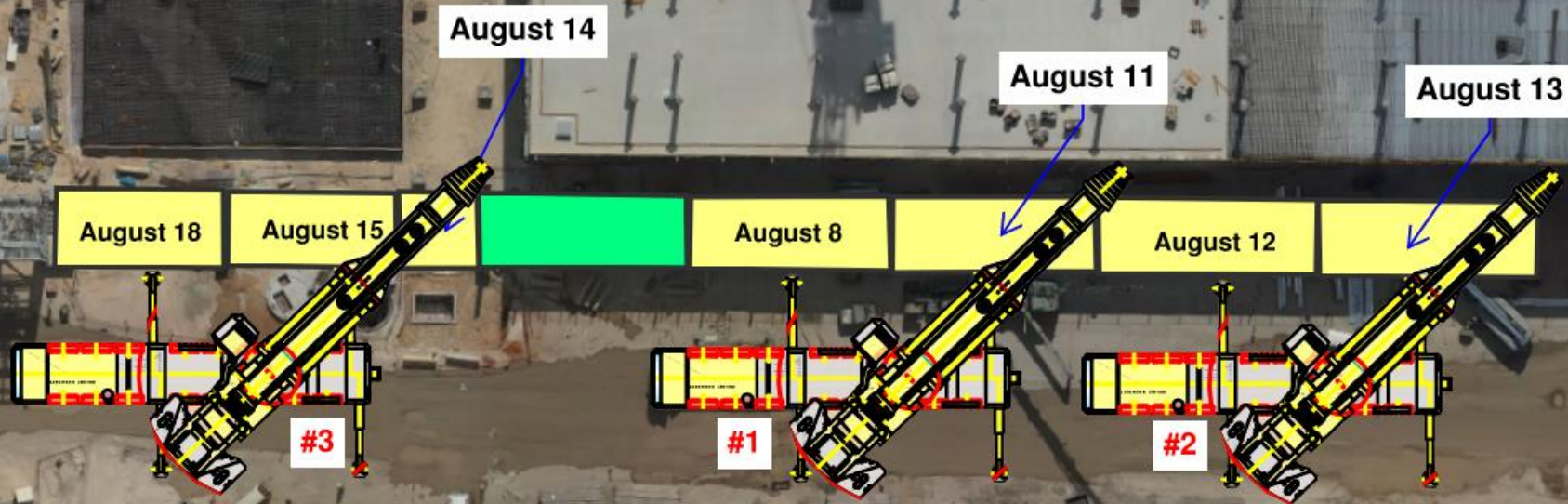
FAB GIS PERMENENT POWER
AUGUST 8TH 4PM.





Trestle - MOD 2 Steel erection

T-17 Lvl 1



Trestle - MOD 2 Steel erection

T-17 Lvl 2

August 19

August 25

August 27

August 21

August 20

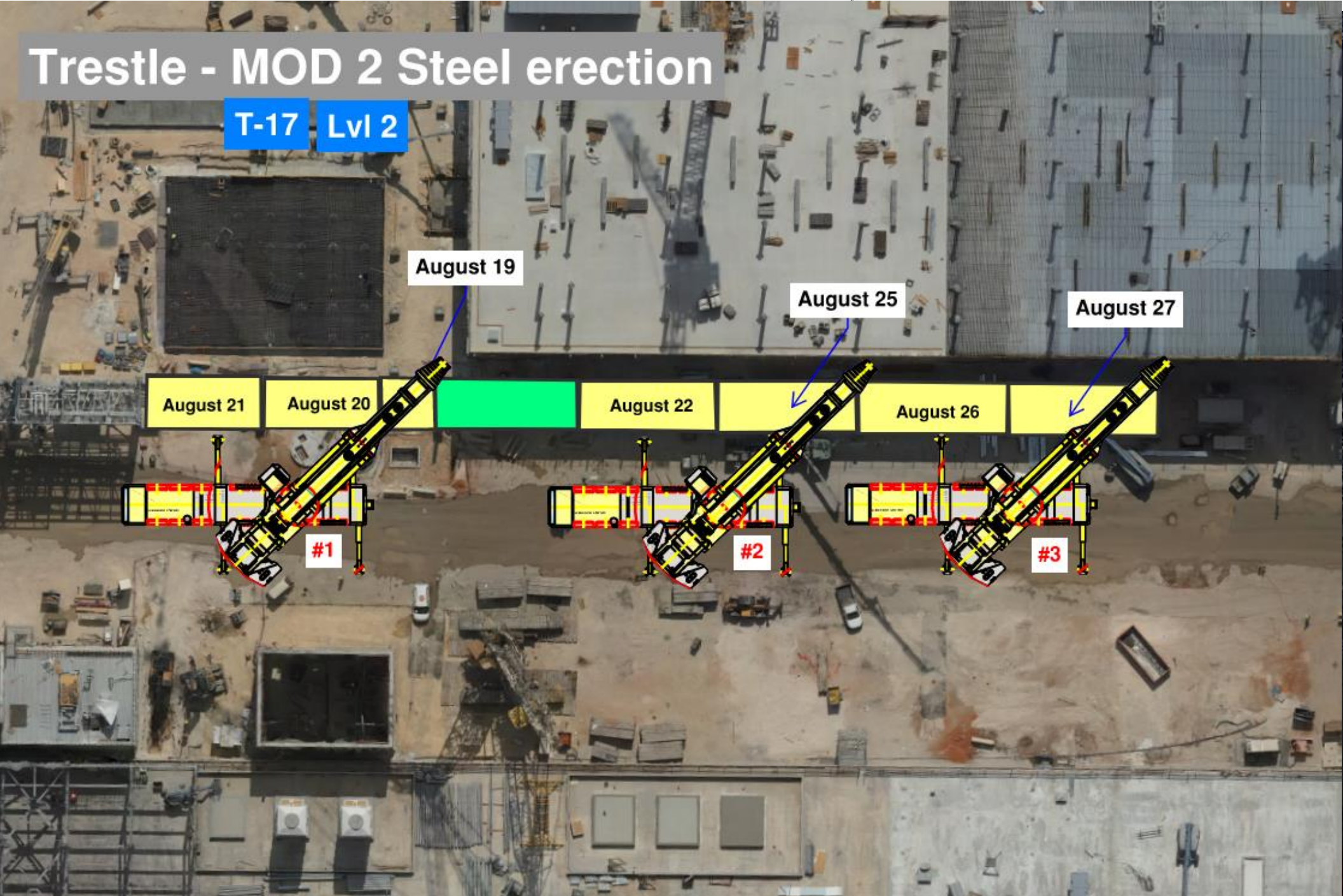
August 22

August 26

#1

#2

#3



BSGS



From main
kiosk

Site temporary power

Legend :

- 22KV Line
- 400V Line
- 109 - Kiosk

TC-10
Done

TC-8
on Gen power
07.08

TC-6
Done

TC-4
Done

630A
SW
Done

Shutdown TC-08
07.08 wednesday
from 18:00 to 22:00

630A
NW
Done

Fab 38.2

Fab 38.1

630A
SE
15.08

630A
NE
30.08

TC-9
On Gen power
20.08

TC-7
On Gen power
01.09

TC-5
Done

TC-3
Done

To 115

TC-13
Done

Cub 2

TC-12
Done

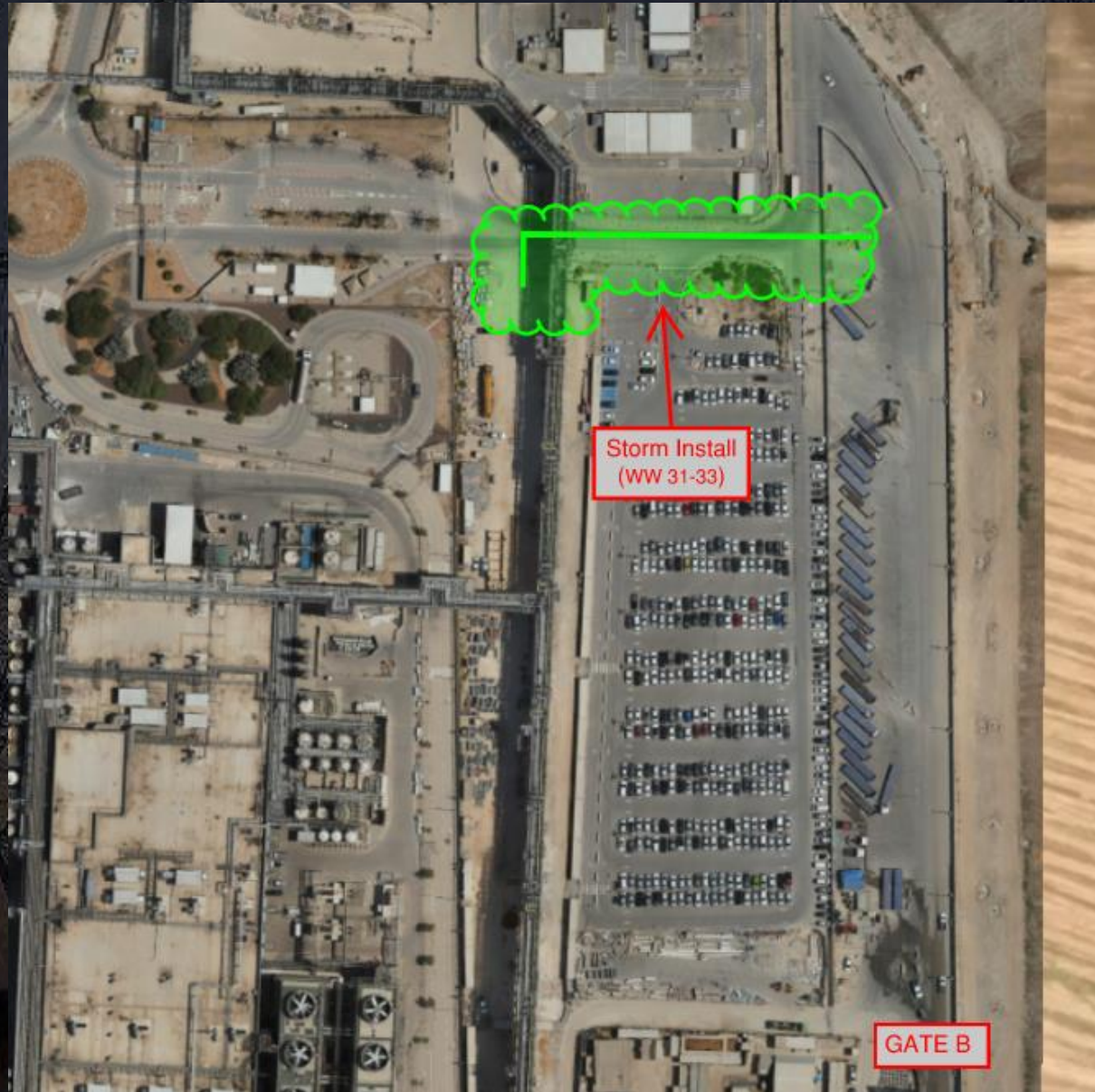
From main

Cub 1

117

Daily Coordination Meeting

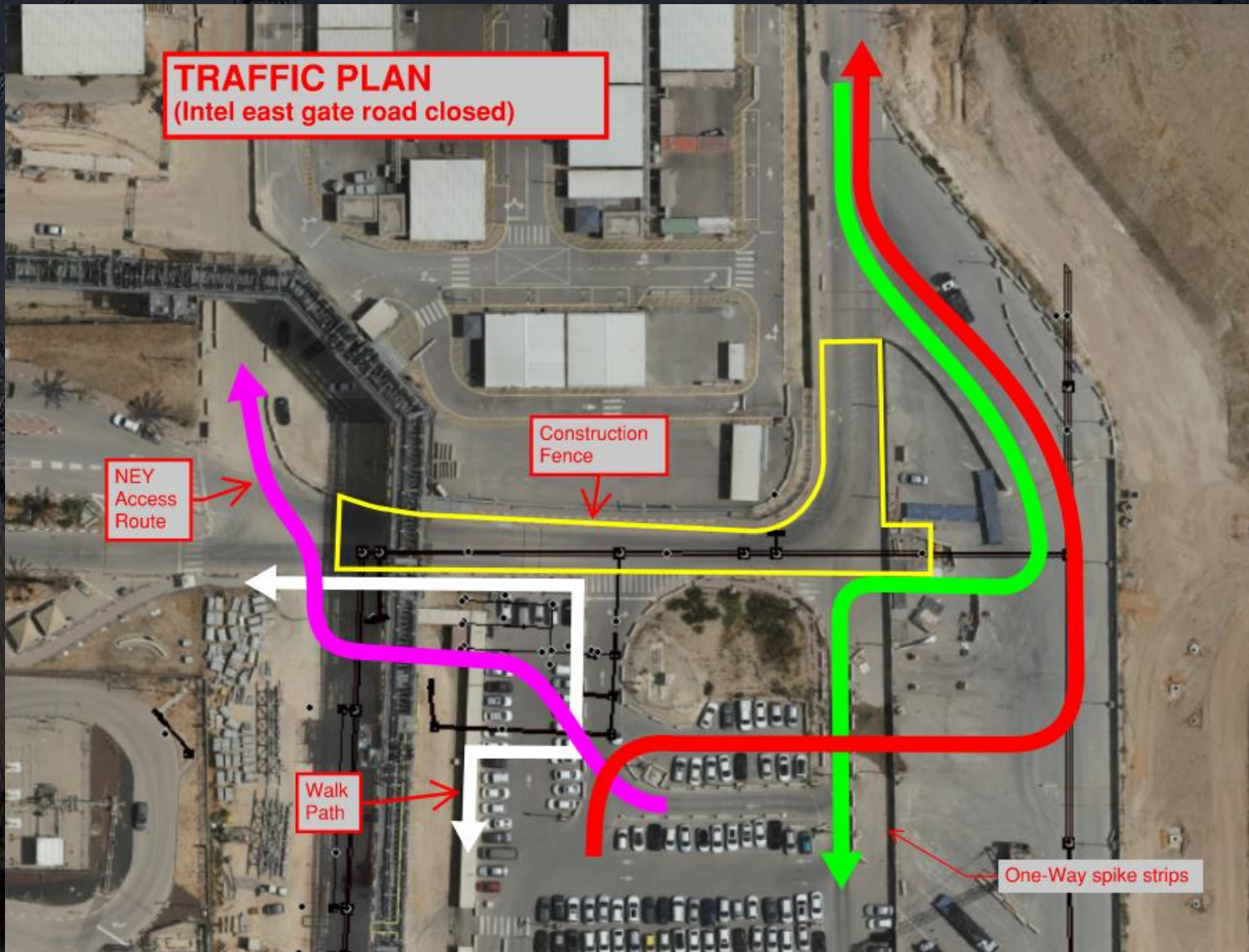
Site Logistics
North Gate B



Daily Coordination Meeting

Site Logistics

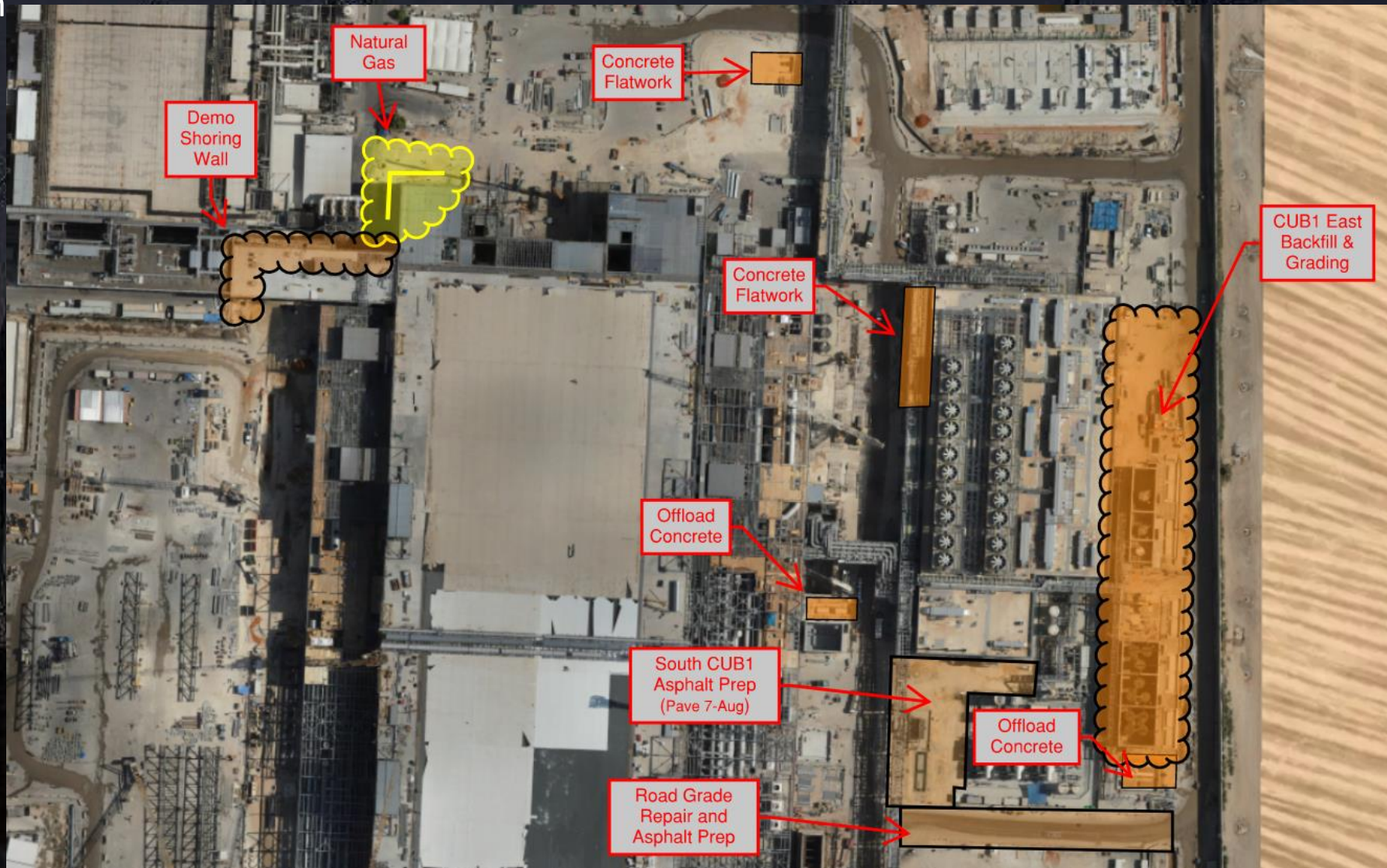
Traffic Plan



Daily Coordination Meeting

Site Logistics

North



Daily Coordination Meeting

Site Logistics

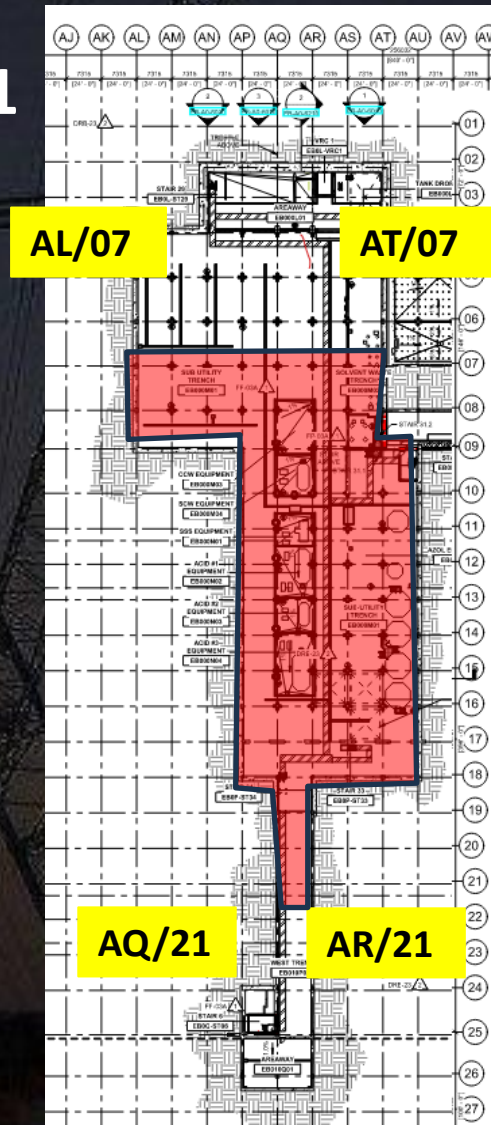
South



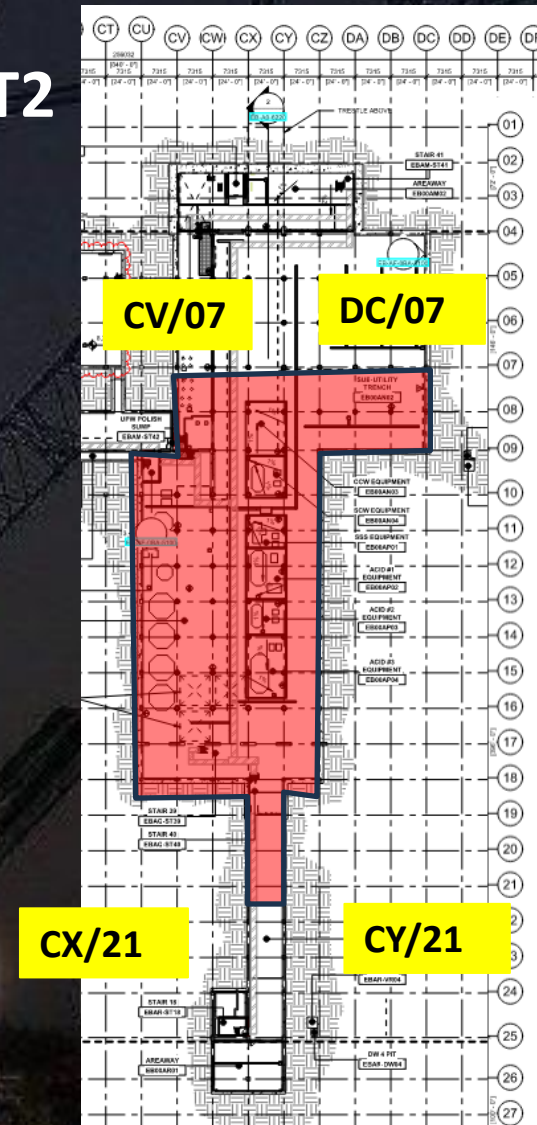
Daily Coordination Meeting

Site Logistics - Protected Areas (SUT Level)

SUT1

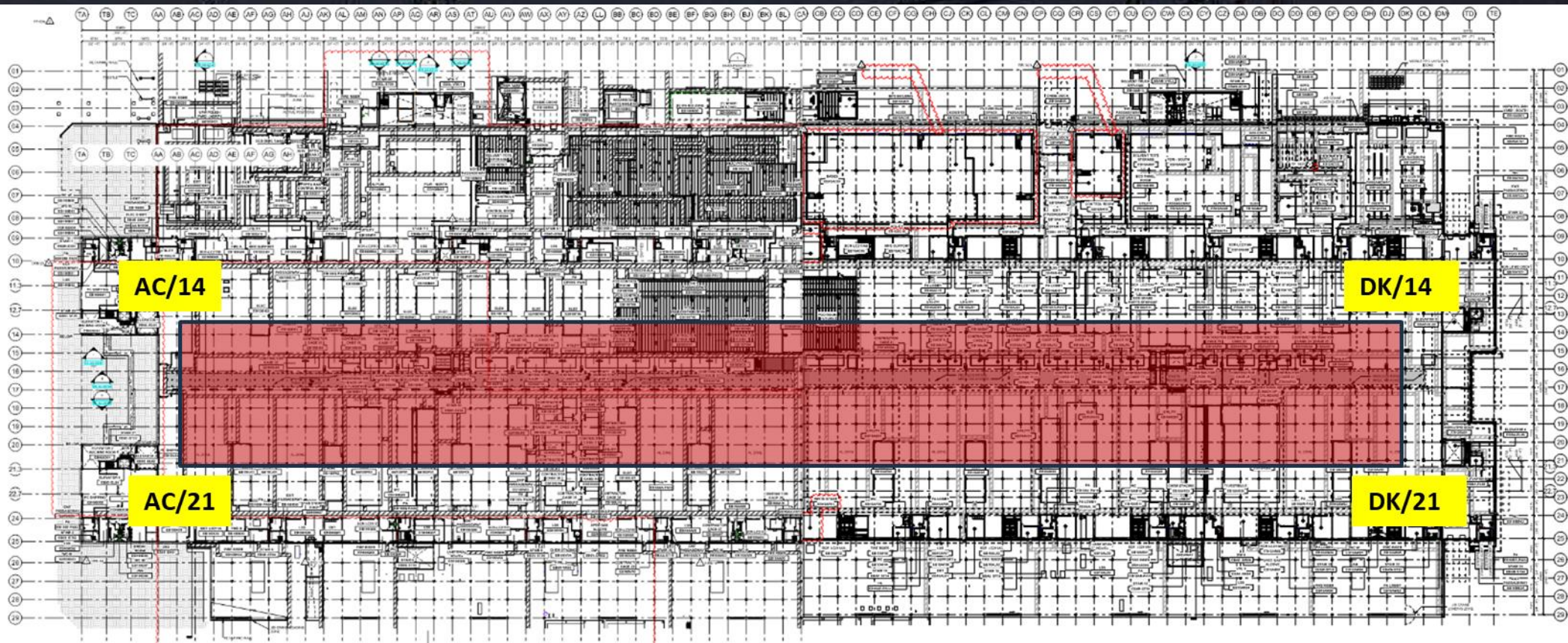


SUT2



Daily Coordination Meeting

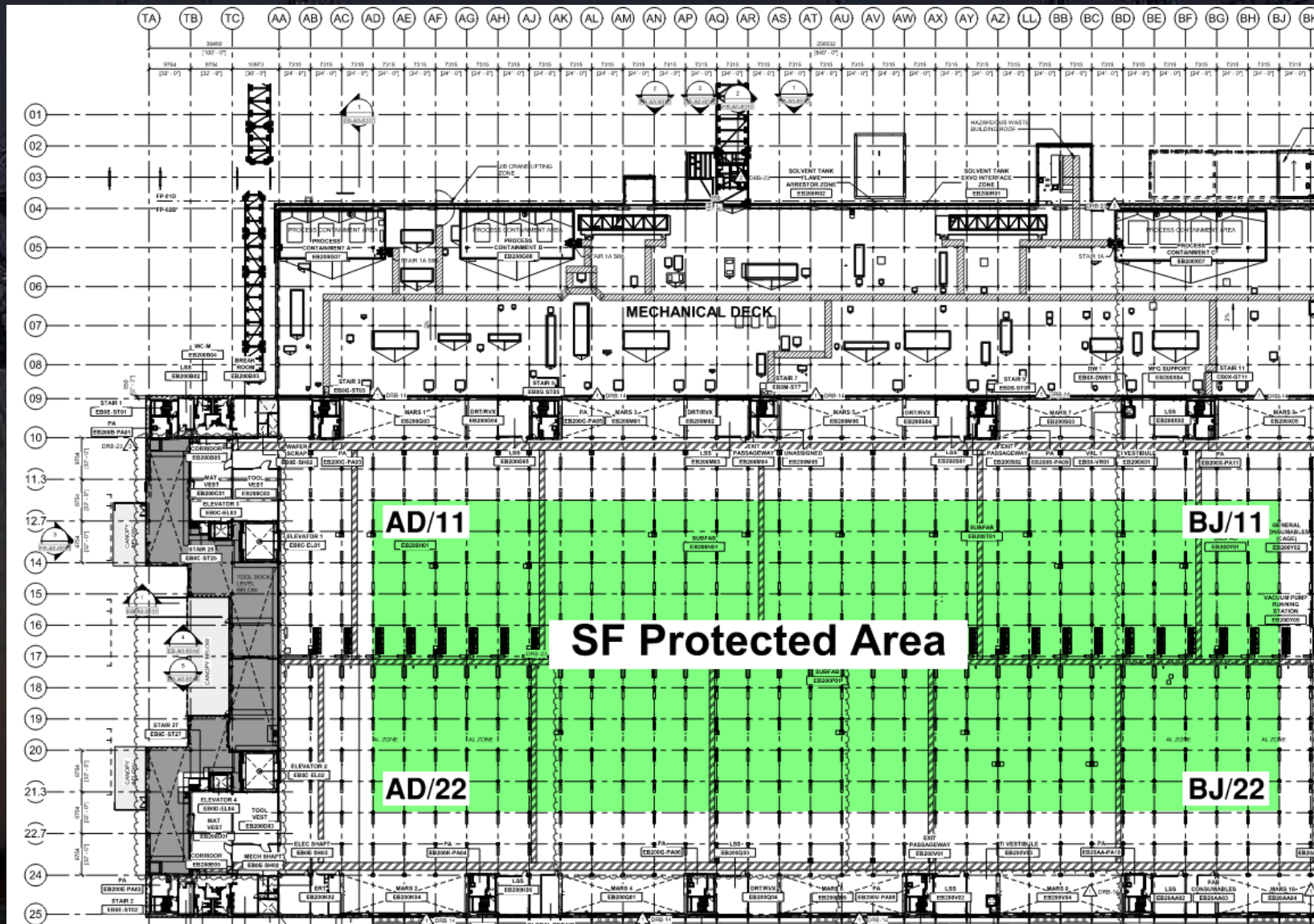
Site Logistics - Protected Areas (Utility Level)





Daily Coordination Meeting

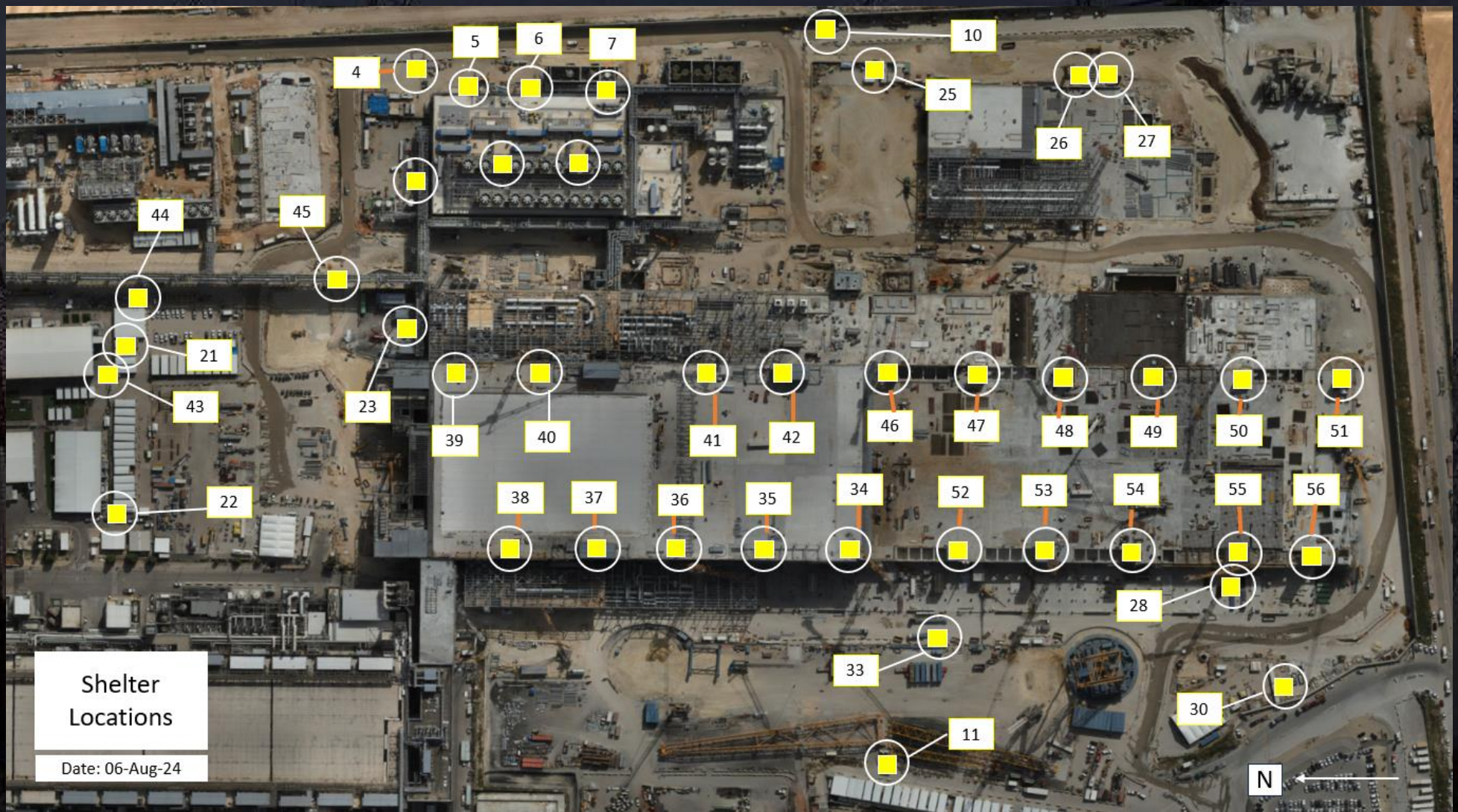
Site Logistics - Protected Areas (Subfab Level)



Daily Coordination Meeting

Site Logistics

Protected Areas



Daily Coordination Meeting

WATER BOTTLE FILLING & PERSONNEL COOLING STATIONS

BF (1) AT GIS



Communication




Communication


- Even the best thought out plans mean nothing if they aren't effectively communicated.
- Engage your field supervision and craft in the direction you are giving them. Have them tell *you* the plan to make sure they understand it fully before they start their tasks.
- Remember that if the last time you talked about fall protection, barricading, or PPE use was months ago– people forget, you have new hires, etc.
- If you think you've communicated enough– you haven't.





Heat Index- August 8th

	temperature (°F)																
	80	82	84	86	88	90	92	94	96	98	100	102	104	106	108	110	
Relative Humidity (%)	40	80	81	83	85	88	91	94	97	101	105	109	114	119	124	130	136
	45	80	82	84	87	89	93	96	100	104	109	114	119	124	130	137	
	50	81	83	85	88	91	95	99	103	108	113	118	124	131	137		
	55	81	84	86	89	93	97	101	106	112	117	124	130	137			
	60	82	84	88	91	95	100	105	110	116	123	129	137				
	65	82	85	89	93	98	103	108	114	121	128	136					
	70	83	86	90	95	100	105	112	119	126	134						
	75	84	88	92	97	103	109	116	124	132							
	80	84	89	94	100	106	113	121	129								
	85	85	90	96	102	110	117	126	135								
90	86	91	98	105	113	122	131										
95	86	93	100	108	117	127											
100	87	95	103	112	121	132											

 Caution

 Extreme Caution

 Danger

 Extreme Danger

Extreme Caution

- Ensuring water and shaded areas available
- Acclimating workers
- Emergency planning and response
- Training workers and supervisors on the signs of heat stress and preventative measures
- Modified work schedules and/or rotating out workers
- Monitoring of workers for signs of heat stress

Daily Coordination Meeting



14:00 Sign In