

# Daily Coordination Meeting



14:00 Sign In

# Daily Coordination Meeting

## General Topics:

- Fit for duty
- Happy New Year





ELRAM  
RHS ready for  
FAB Stores walls

HEATCOIL REPL.  
Afcon removed cable tray.  
Carmel UGD GO TIME!

NEWCOTEC  
MOD1/MOD2  
Separation

## ELRAM

MEP+Elctrical  
Ready for re-install



**CARMEL DUCT**  
Housekeeping pads  
ready for equipment set.

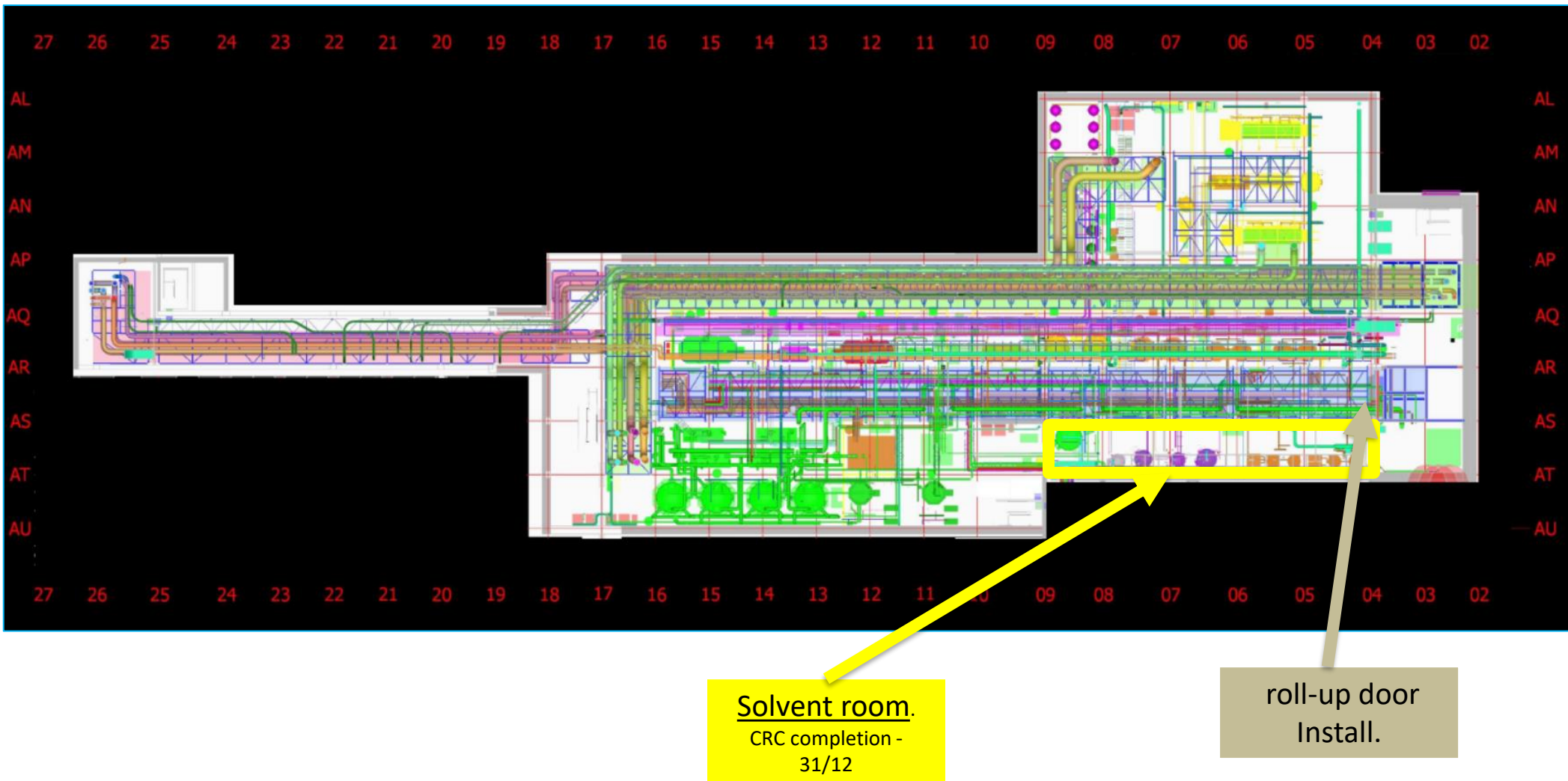
CARMEL DUCT  
Housekeeping pads  
ready for equipment set.

MALHIMIM  
8W-9W-10E  
Ongoing



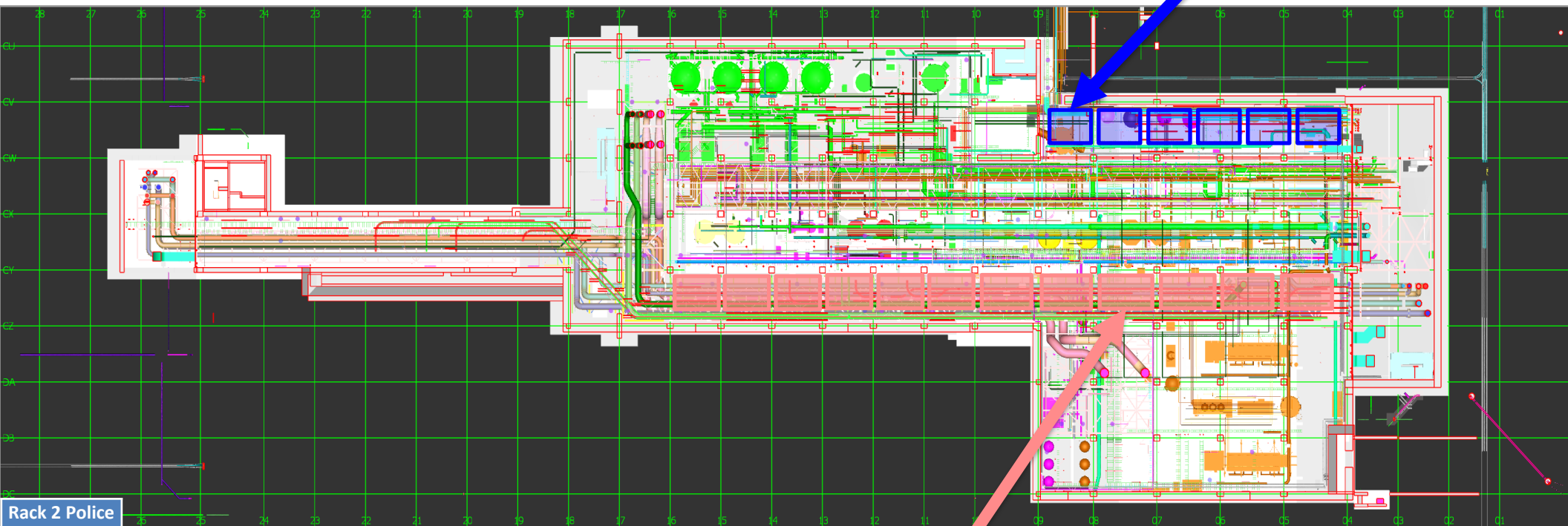


## SUT 38.1 LEVEL



SUT 38.2 LEVEL

Rack 4b  
Lifting  
schedule  
#6 –



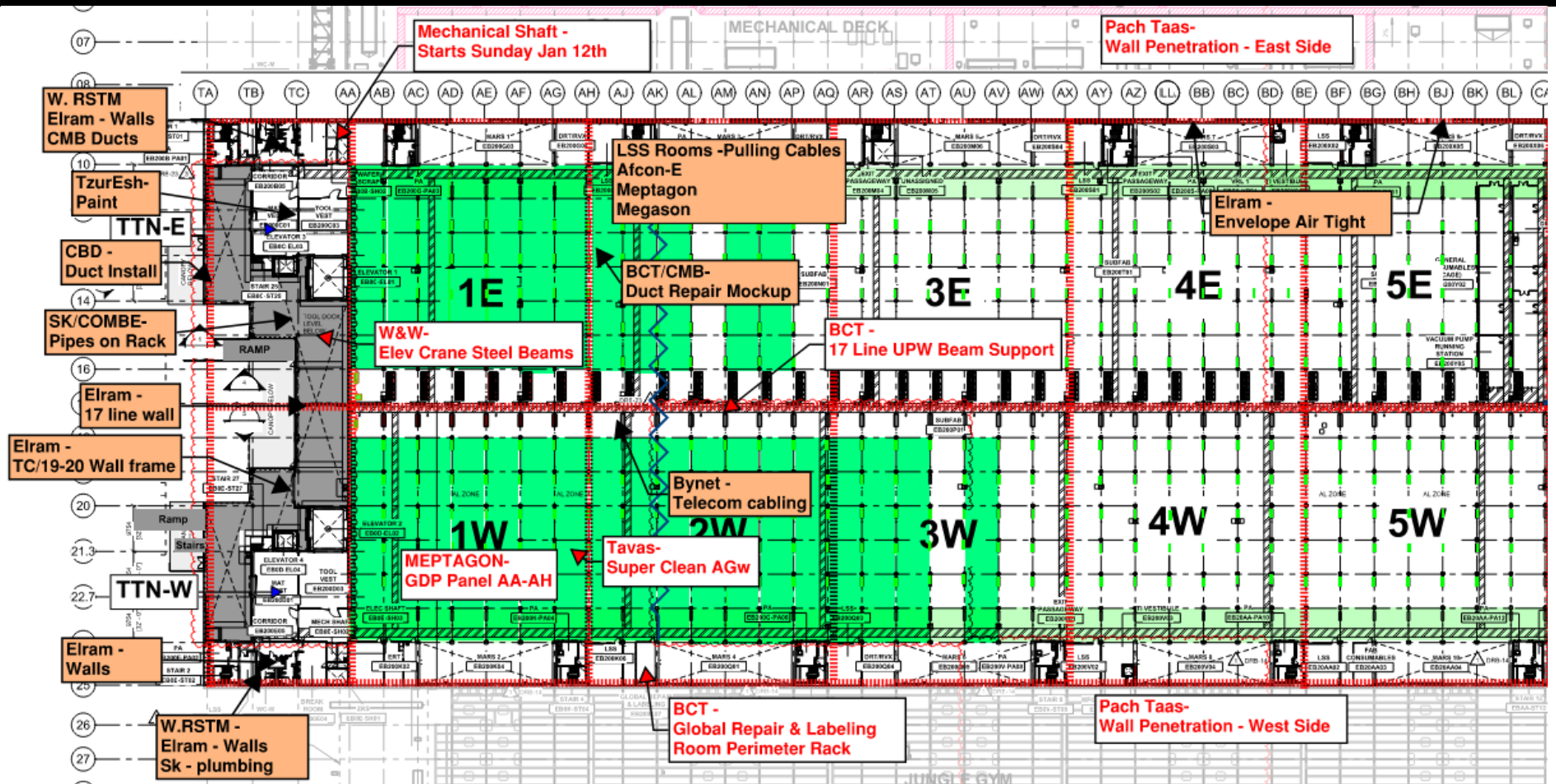
**Rack 2 Police  
escort dates**

v24.11.24
v25.11.24
v3.12.24
v9.12.24
v12.12.24
v15.12.24
v17.12.24
v22.12.24
5.1.25
14.1.25
2.2.25
9.2.25

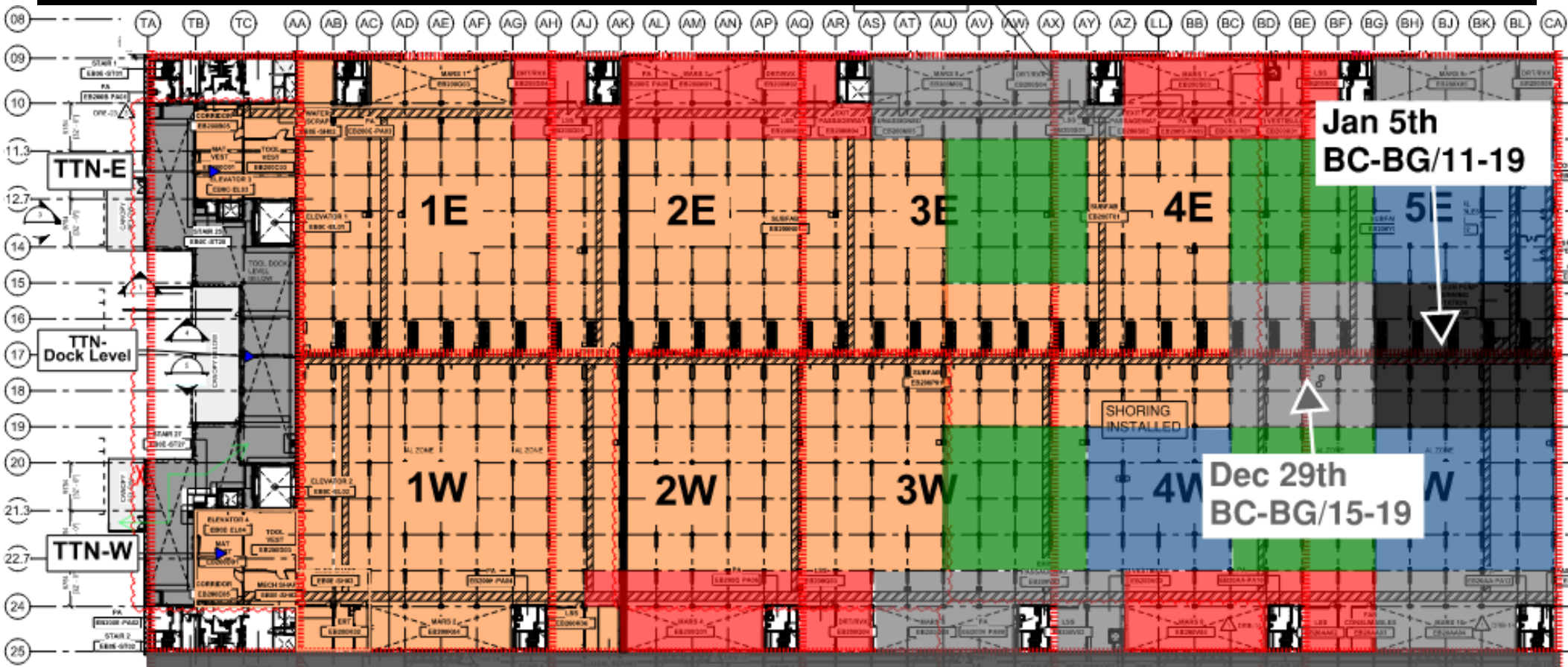
Rack 2  
MIMO -  
Module #9  
5th of Jan



# SUBFAB BUILDOUT MOD 1

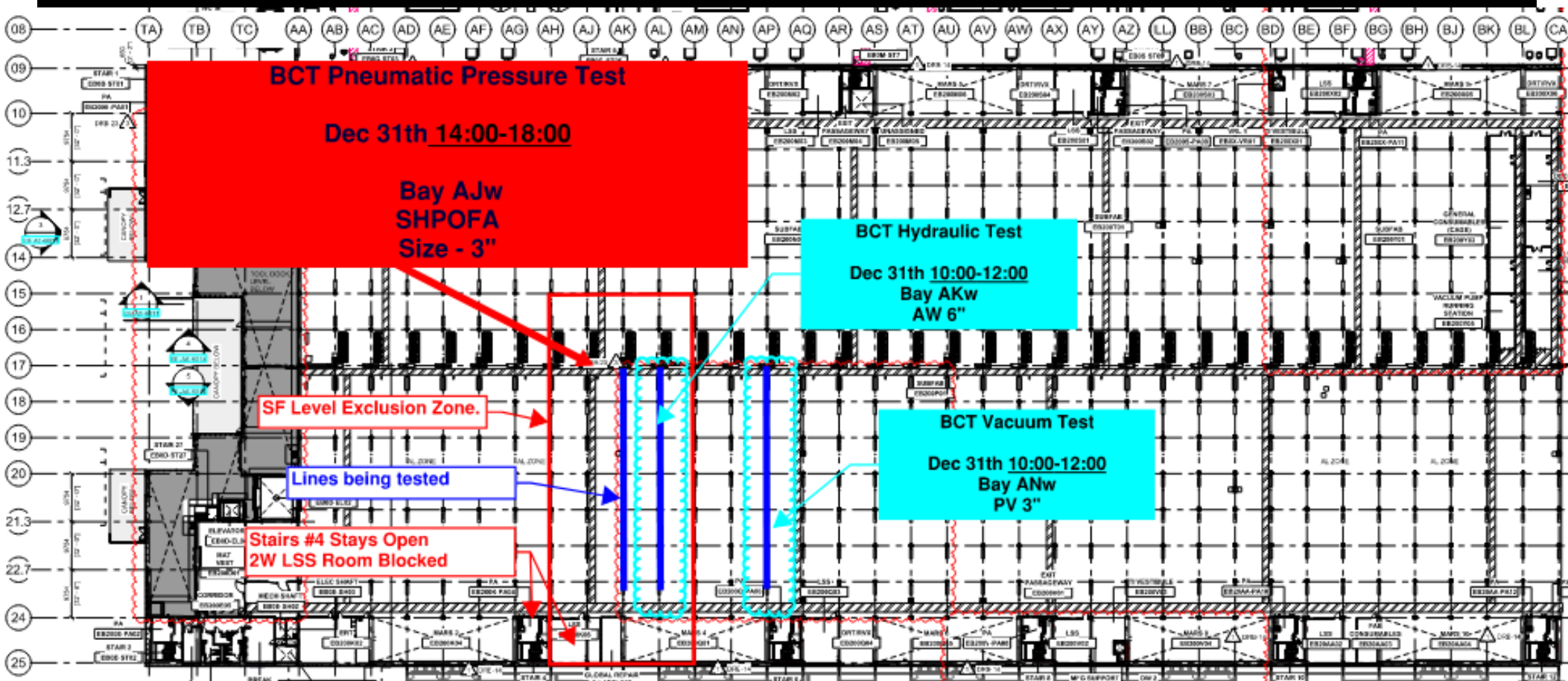


# SUBFAB CRC TOPCOAT

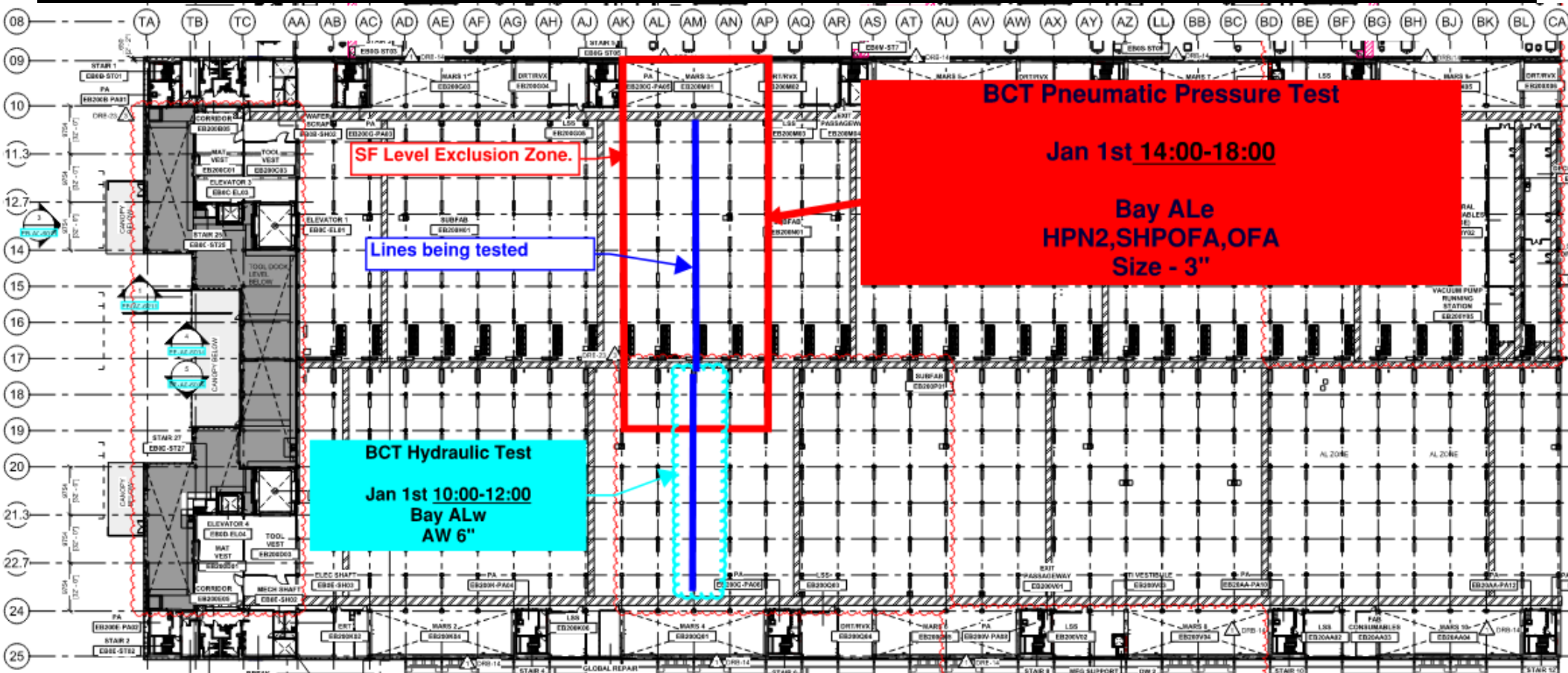




# BCT Pressure Test Today

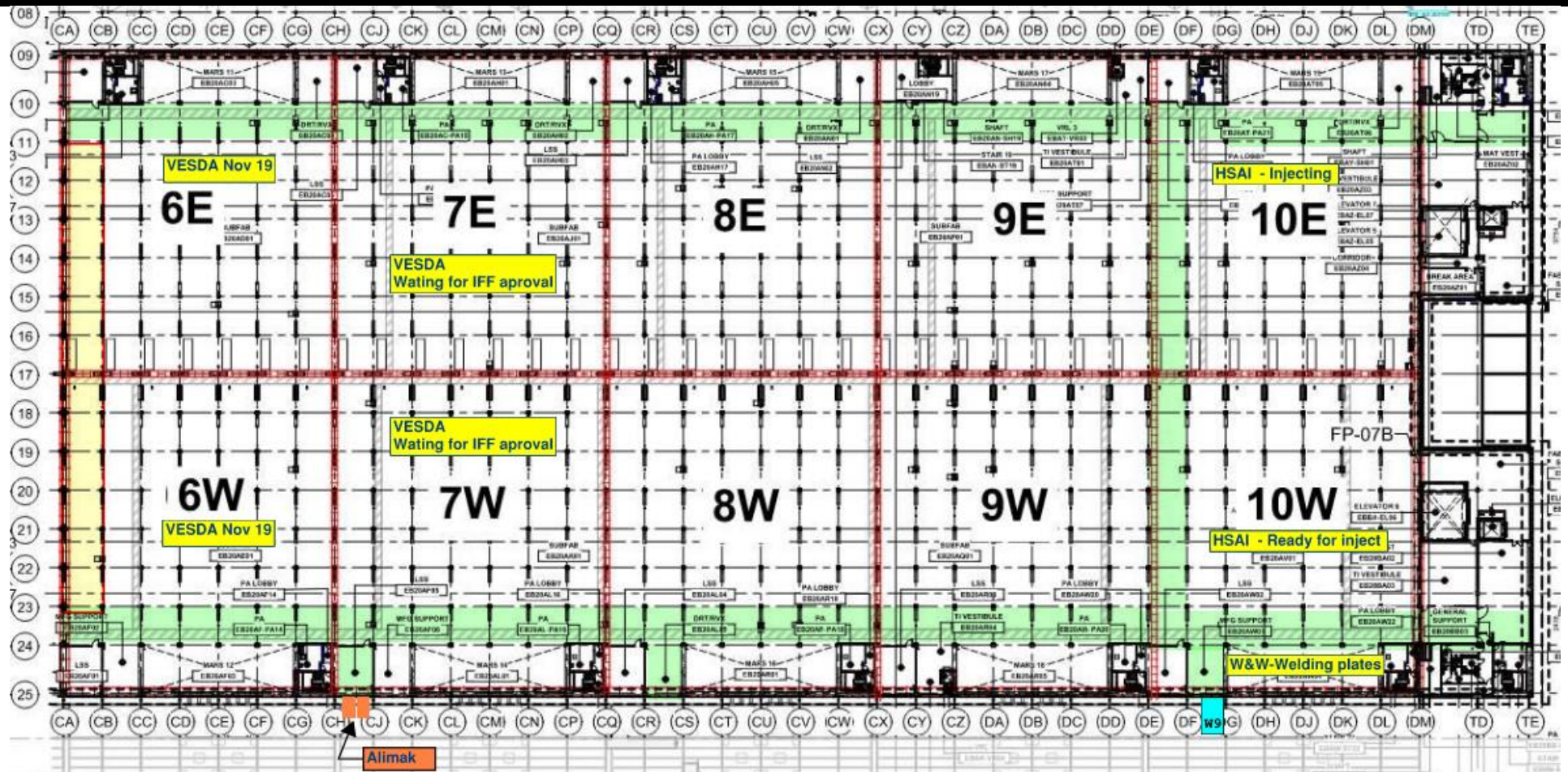


# BCT Pressure Test Tomorrow

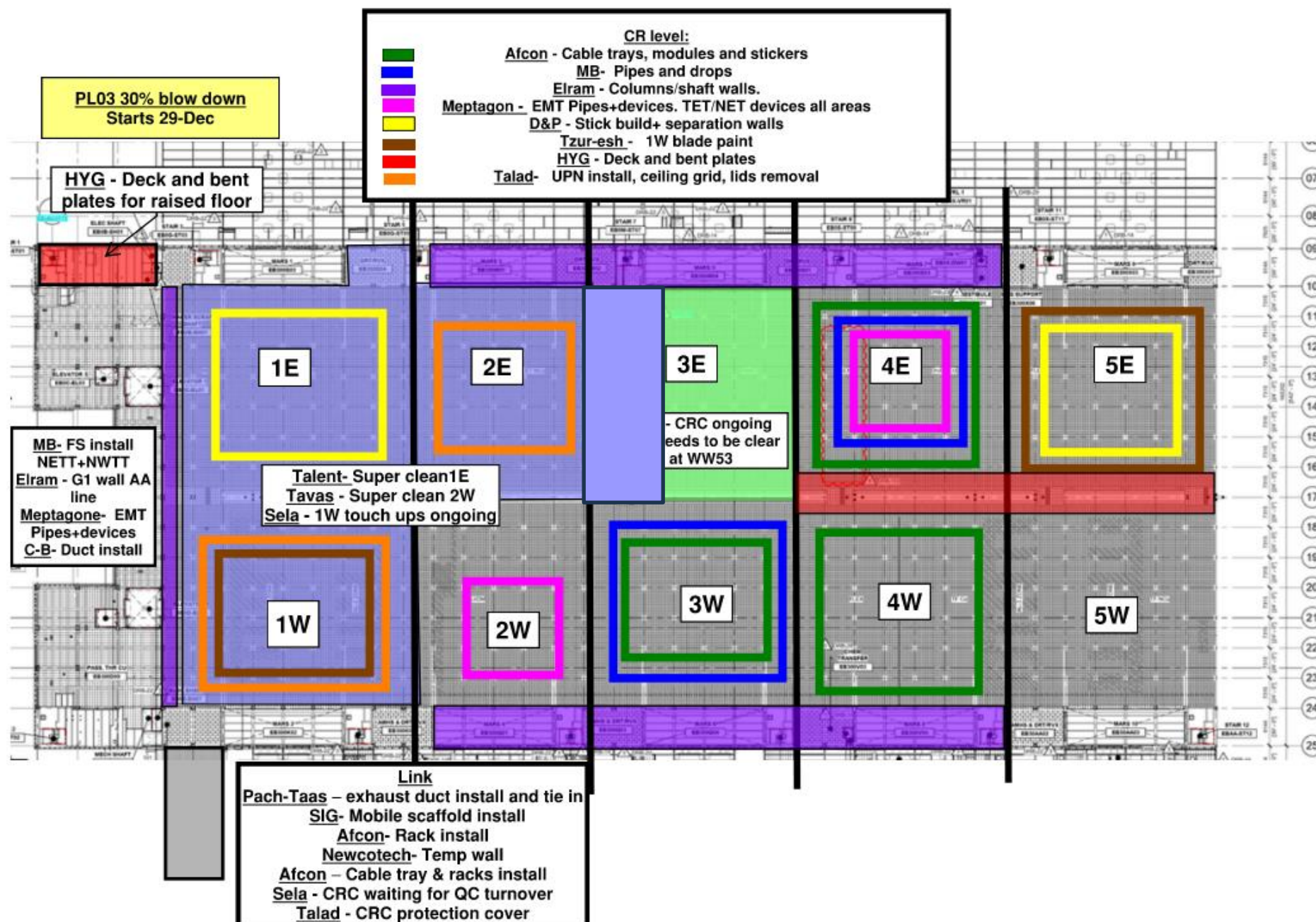




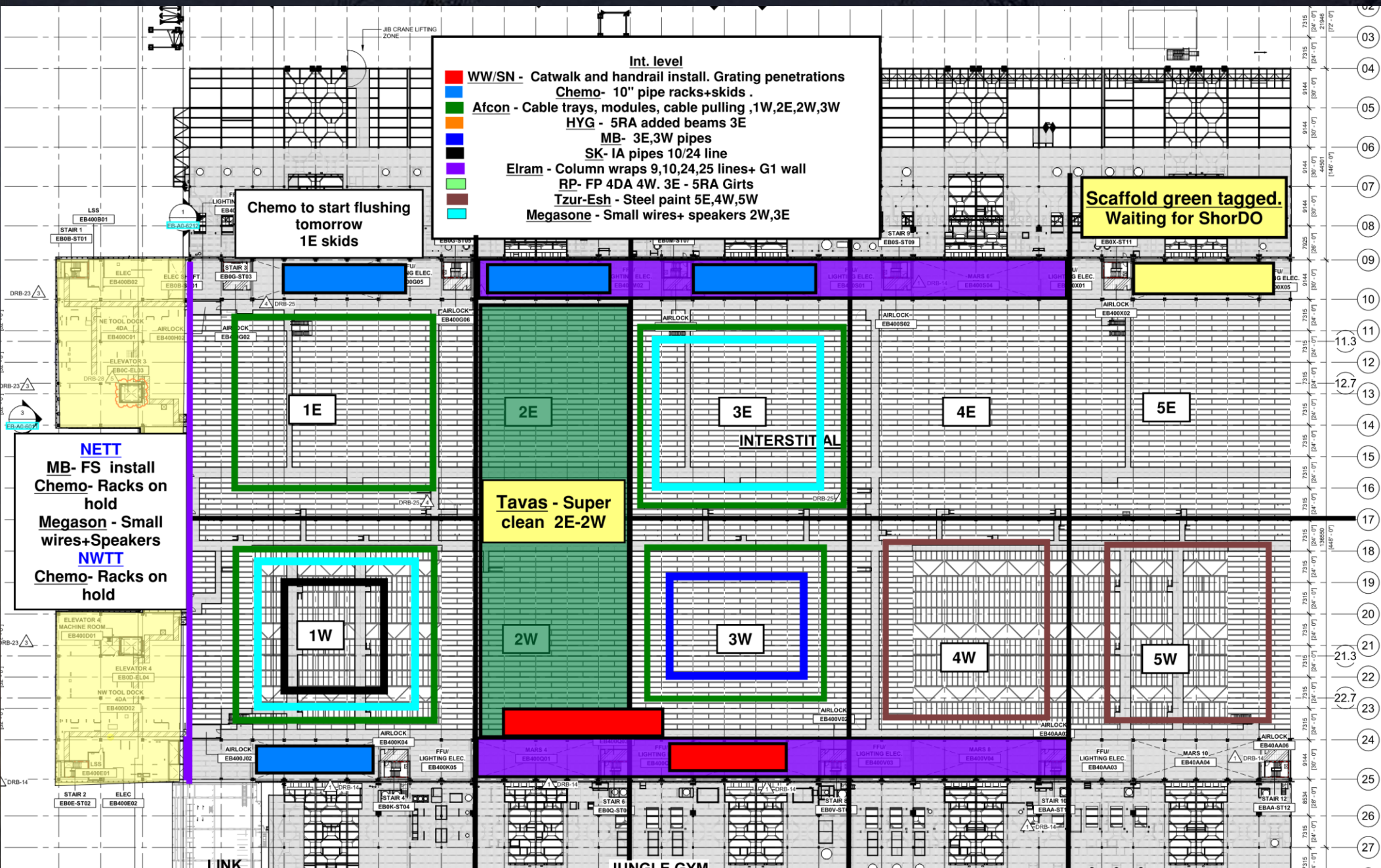
# SUBFAB BUILDOUT MOD 2

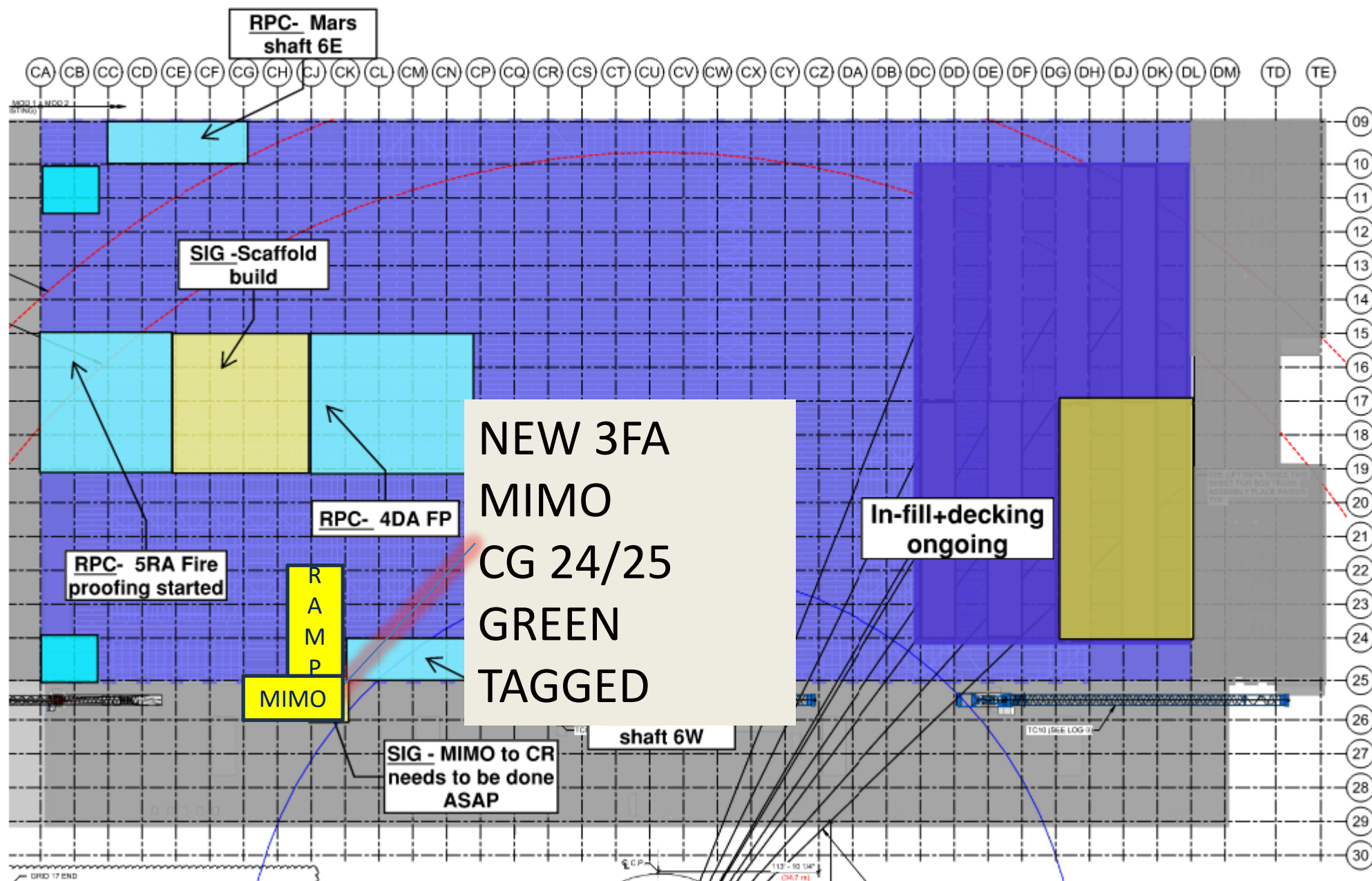
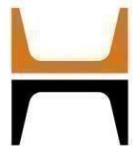
















## MIMO RULES

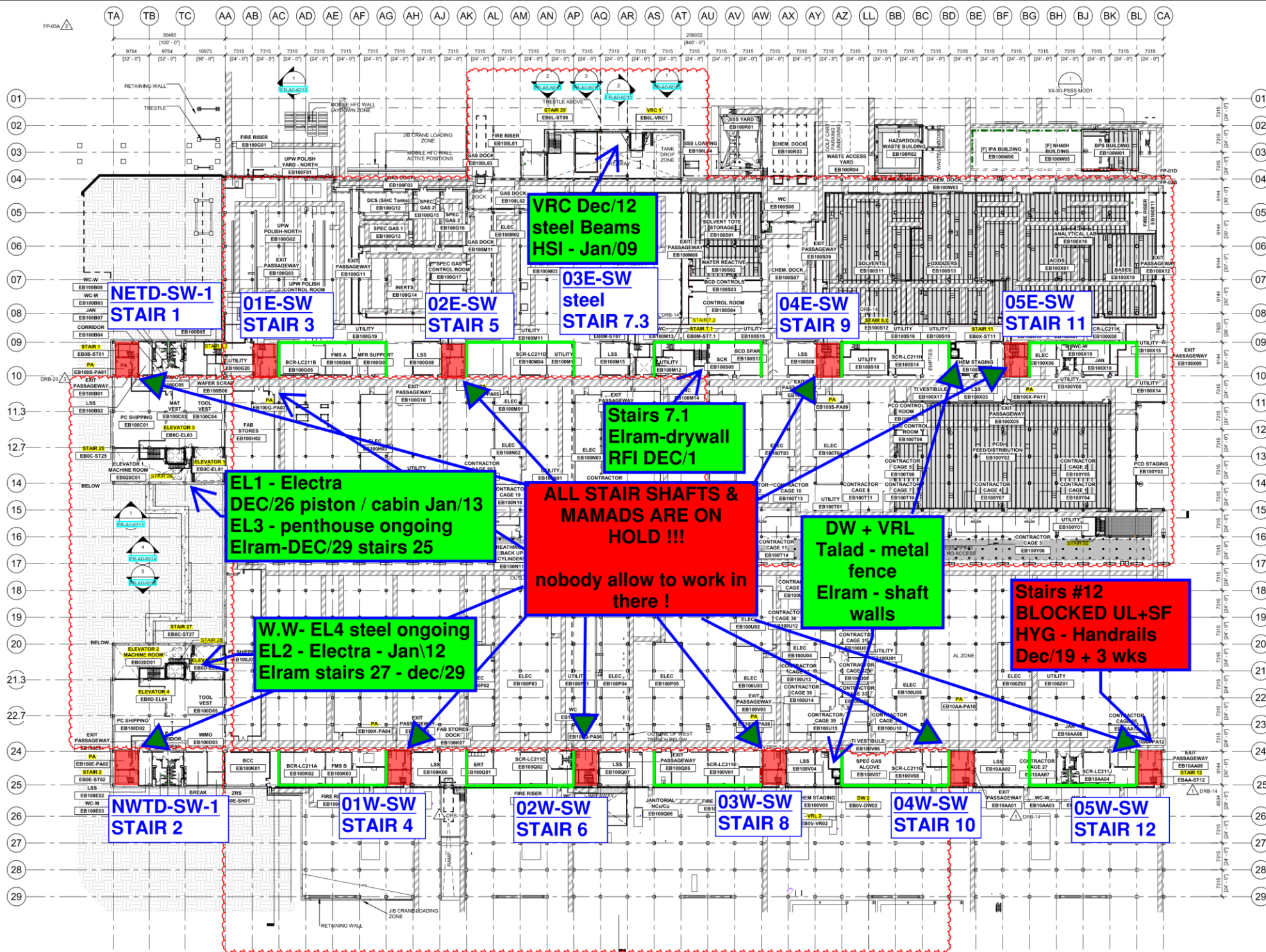
- NO FORKLIFTS SCISSORS LIFTS & BOOM LIFTS ALLOWED ON THE MIMO'S PLATFORM.
- MIMO PLATFORM IS RATED FOR A USEFUL LOAD OF UP TO 4 TONS.
- RAMP IS RATED TO 2.5 TONS ONLY.
- ALL DELIVERIES MUST BE CLEAR FROM MIMO PLATFORM IMMEDIATELY UPON ARRIVAL.

## חוקי המימו

- אין להכניס מלגזות, במות מספרים ומנופי בום לפלטפורמה של המימו.
- הפלטפורמה של המימו מיועדת למשקל שימושי של עד 4 טון.
- הרמפה מיועדת לעומס של עד 2.5 טון בלבד.
- יש לפנות את כל המשלוחים מפלטפורמת המימו מייד עם הגעתם.

## قوانين ميمو

- يمنع ادخال منصات العمل او الرافعات الى منصة التحميل.
- الوزن المسموح به على منصة التحميل حتى 4 طن.
- الوزن المسموح به على المنحدر المؤدي لمنصة التحميل 2.5 طن.
- يمنع استخدام منصة التحميل للتخزين يجب ادخال المواد والمعدات فورا



Siding - West FAB - JYG

BLOWDOWN 30%

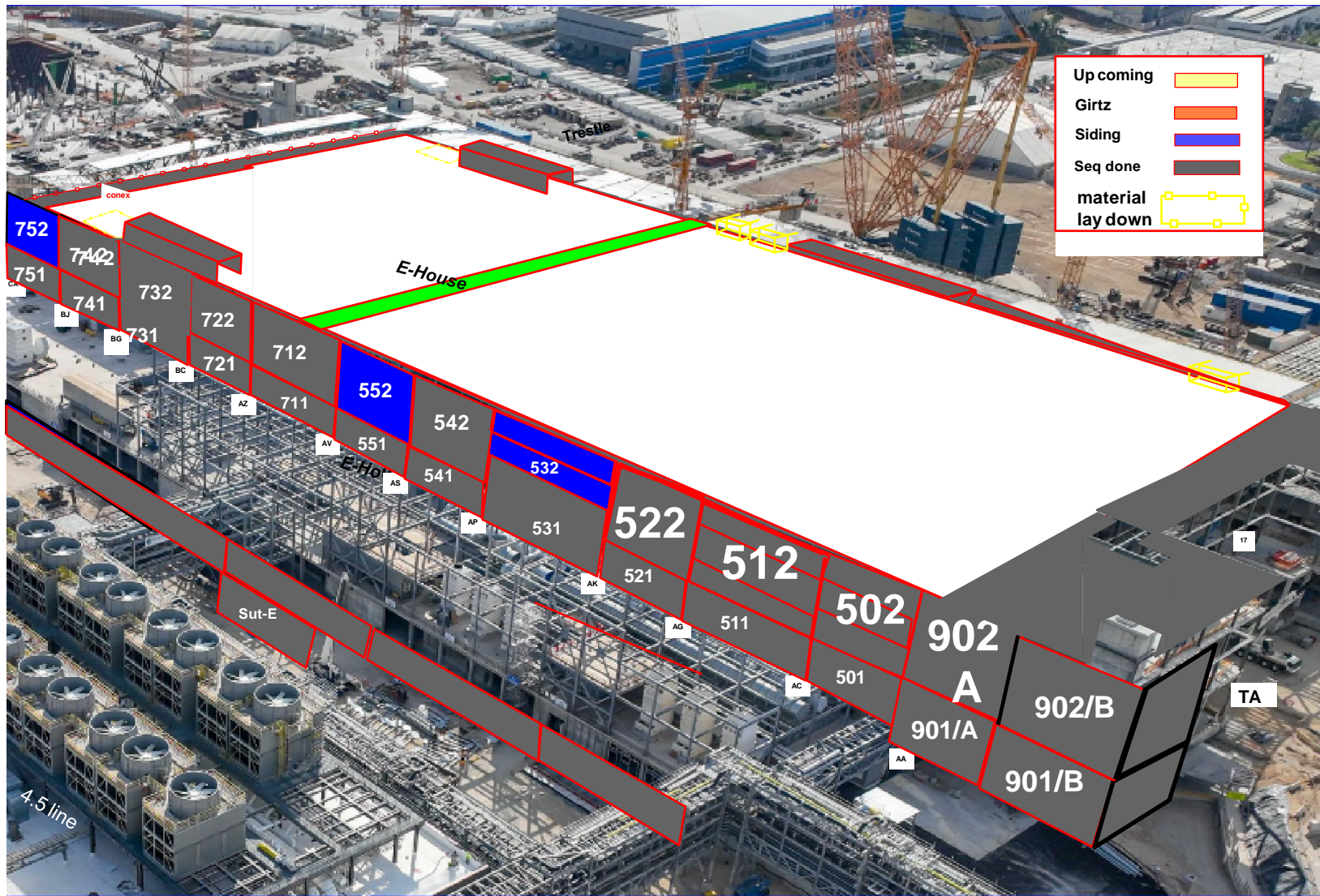
[illegible]



Siding - East FAB - PSSS

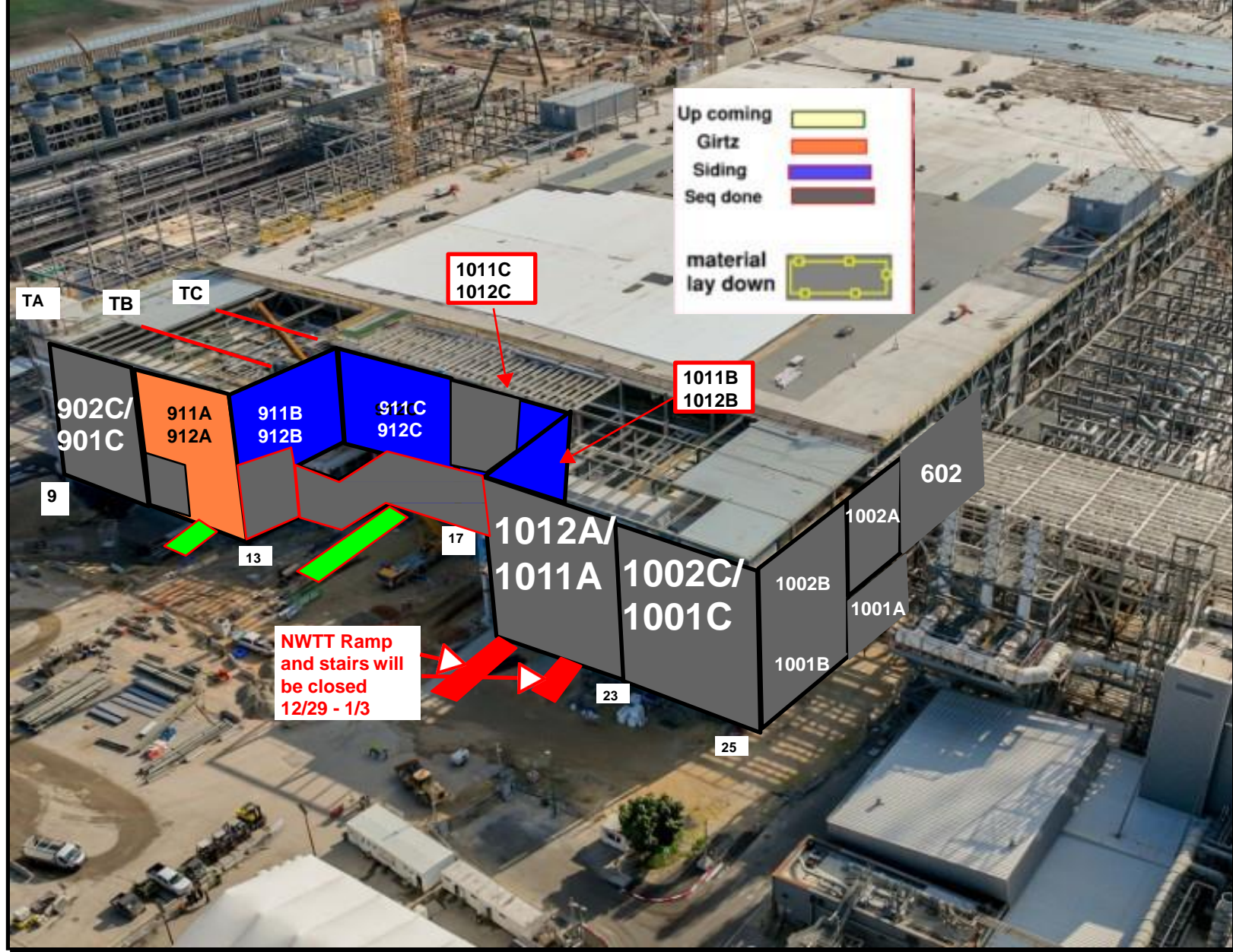
BLOWDOWN 30%

[illegible]

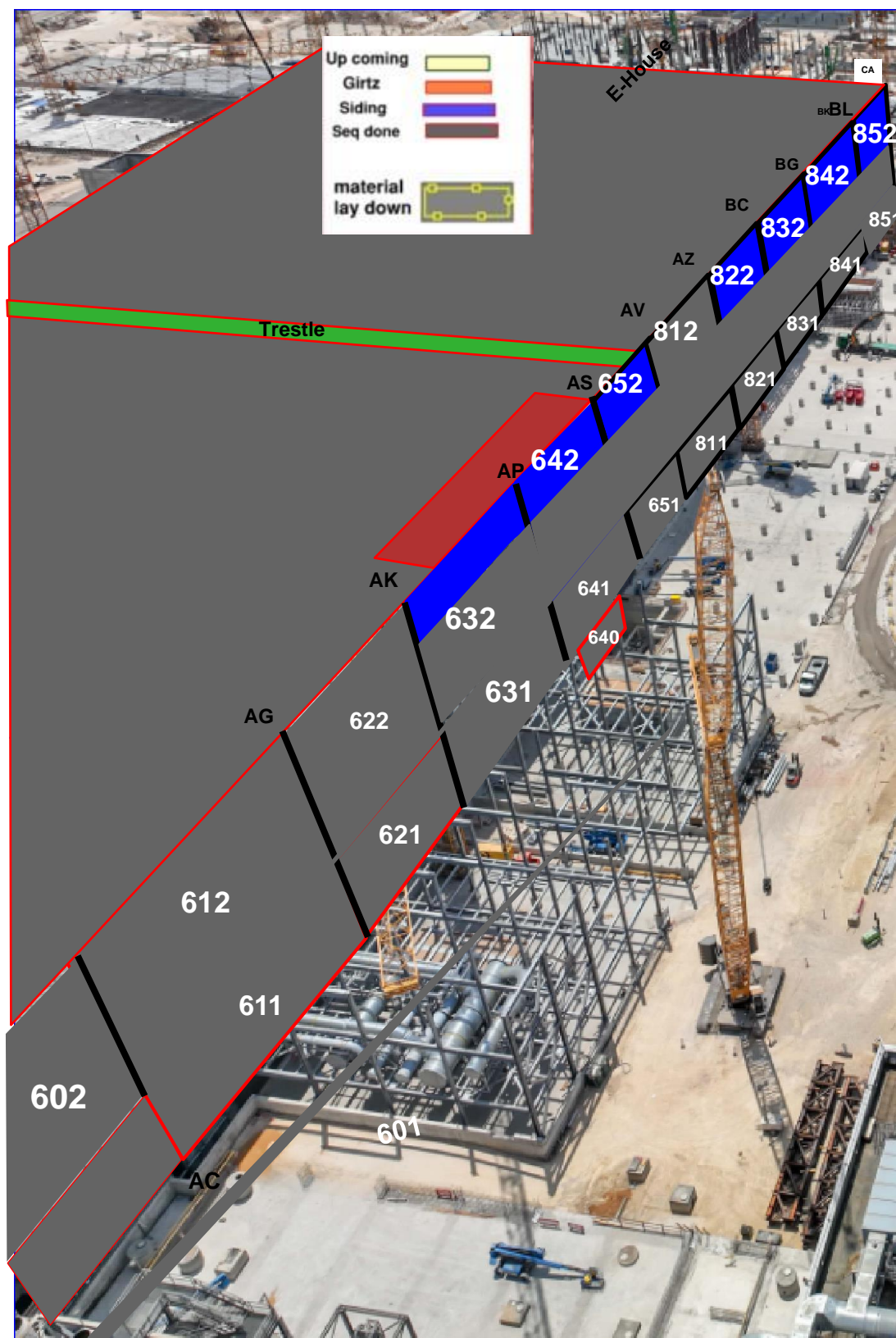


Walk path





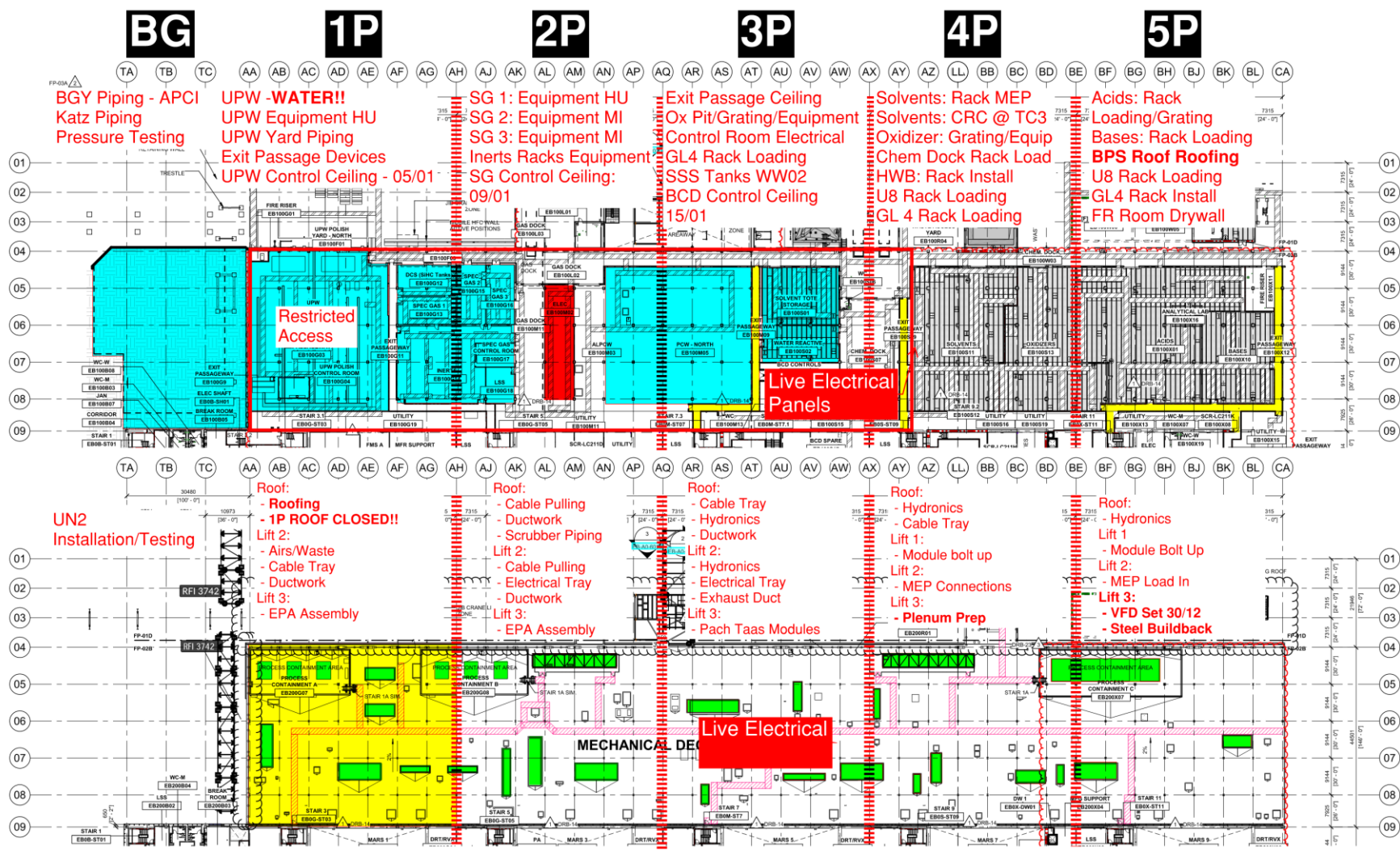




# PSSS.1

Utility Level  
1YA

PSSS Roof  
2SA





# PSSS.2



# PSSS Pressure Tests

**BG**

**1P**

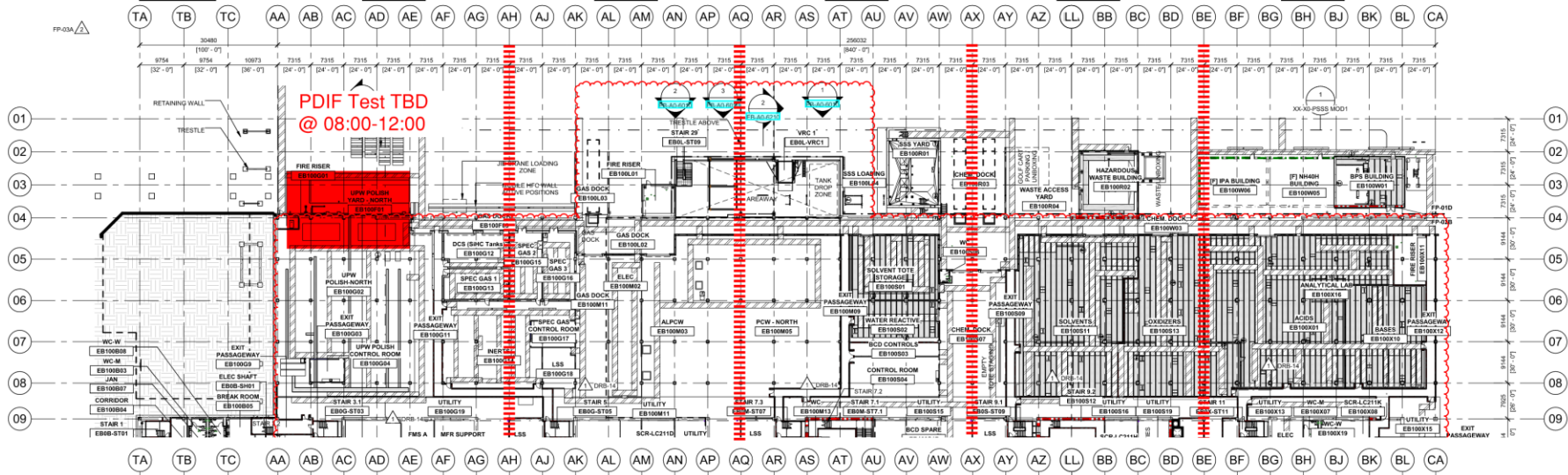
**2P**

**3P**

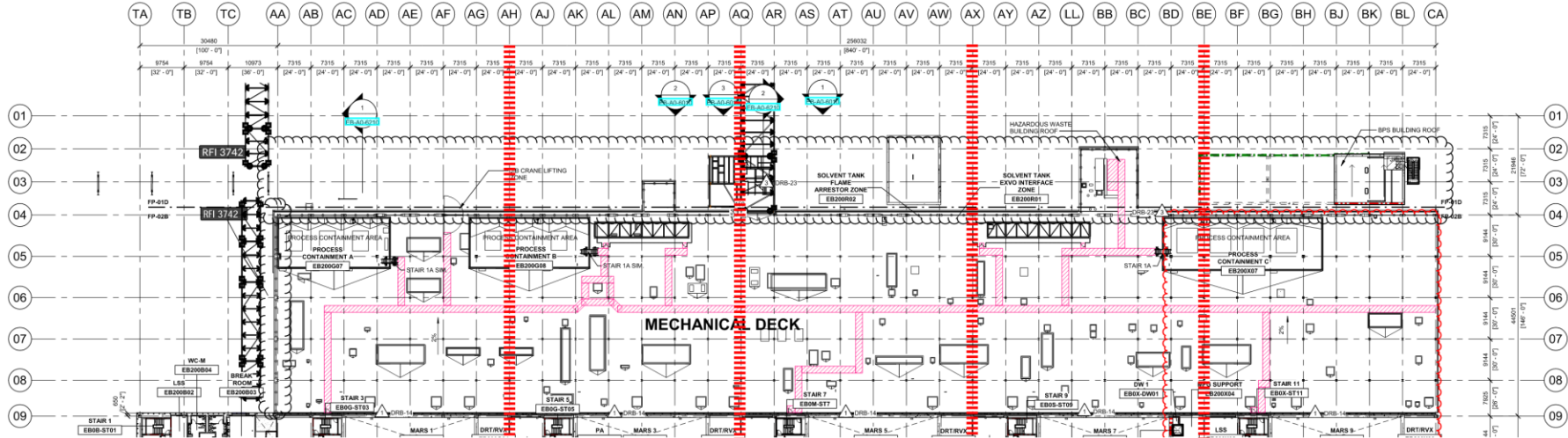
**4P**

**5P**

Utility Level  
1YA



PSSS Roof  
2SA







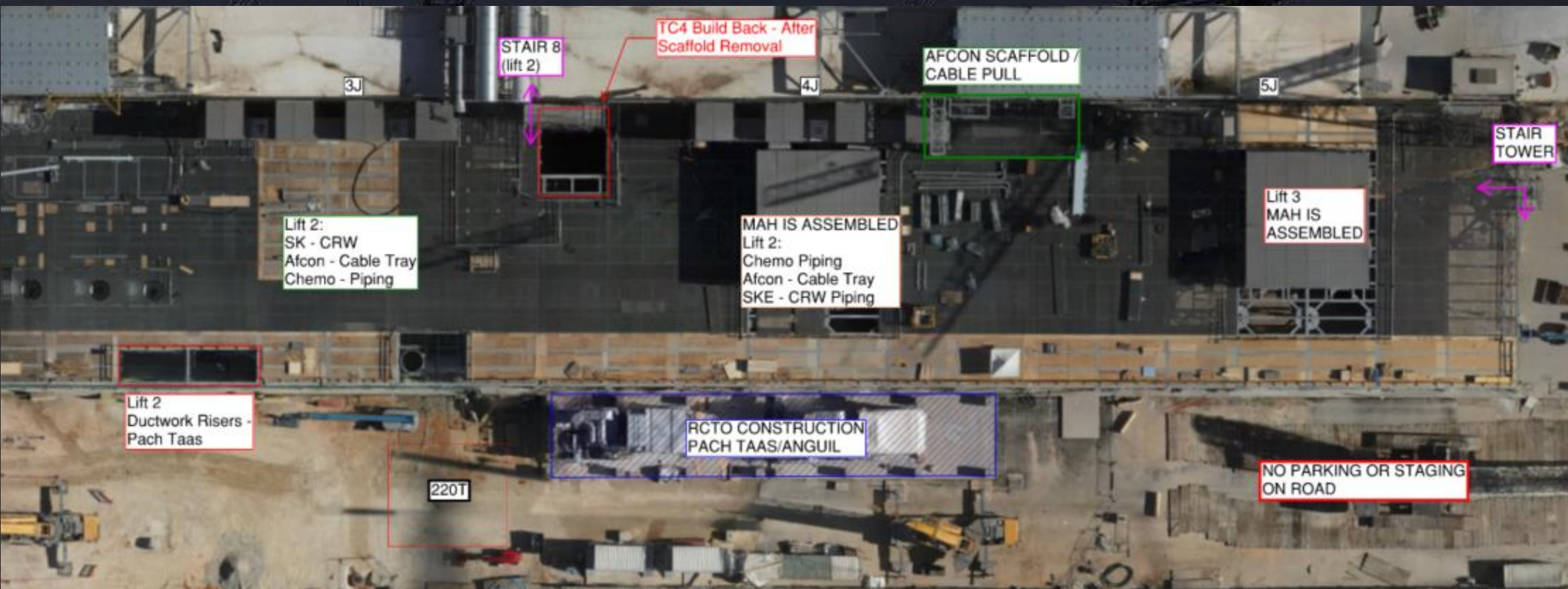
# WJG 01J, 02J LIFT 2 & 3







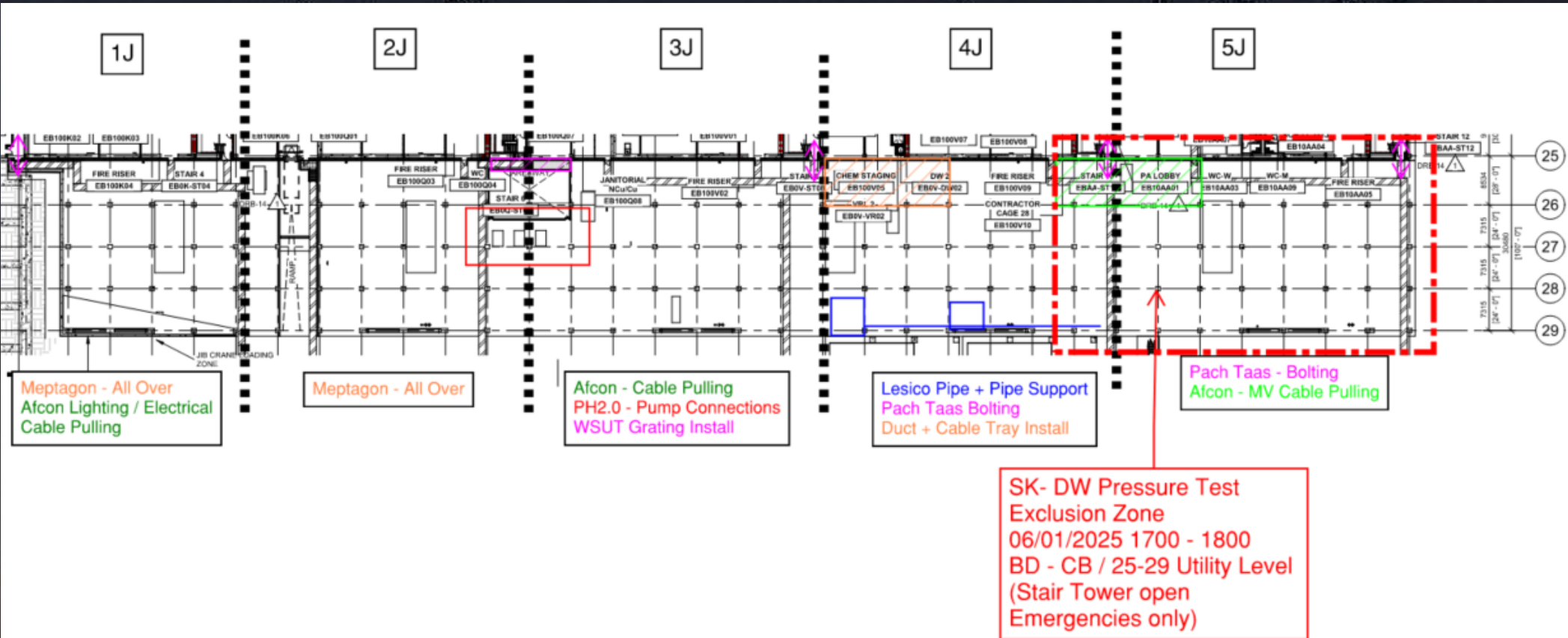
# WJG 03J, 04J, 05J LIFT 2 & 3



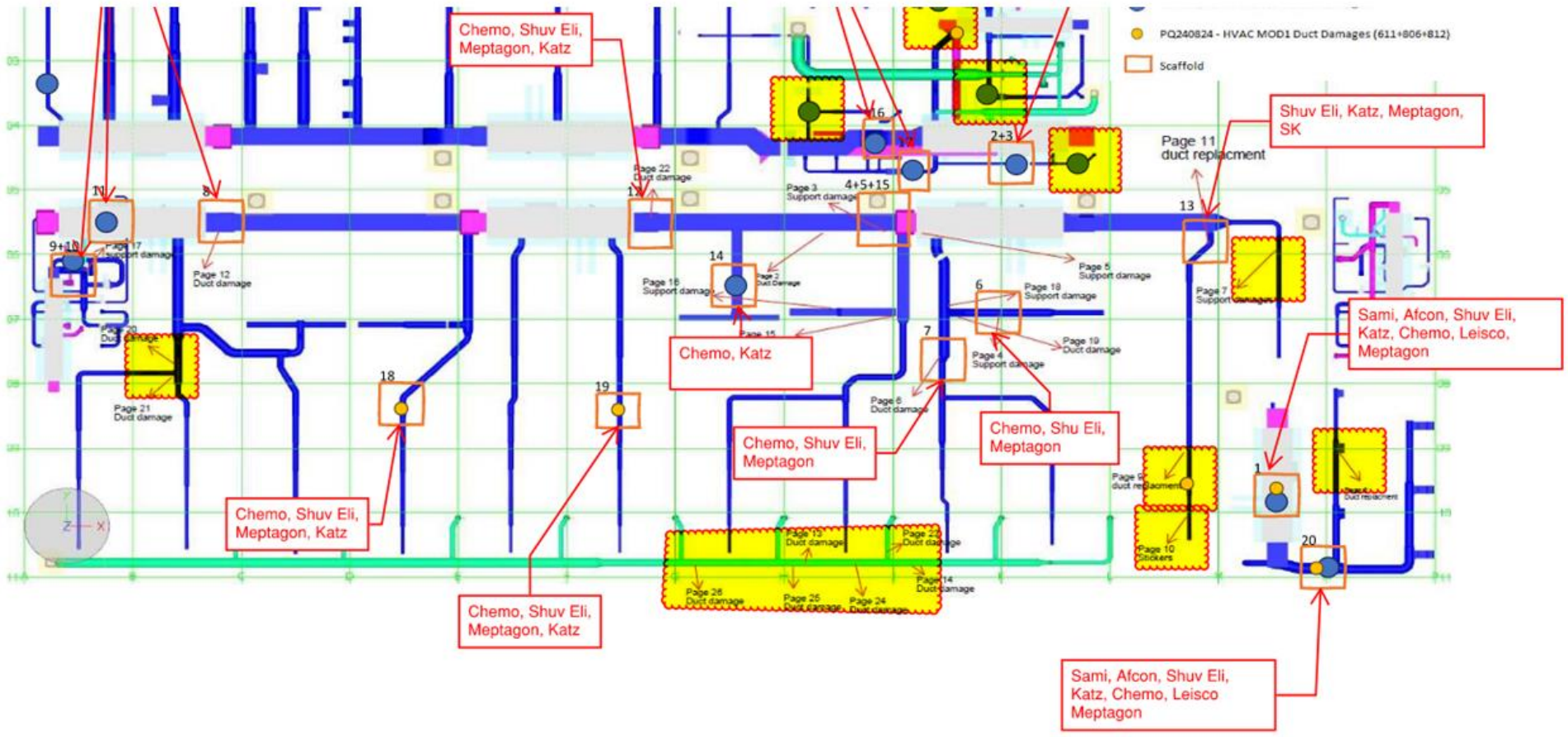




# WJG UTILITY LEVEL BUILD OUT

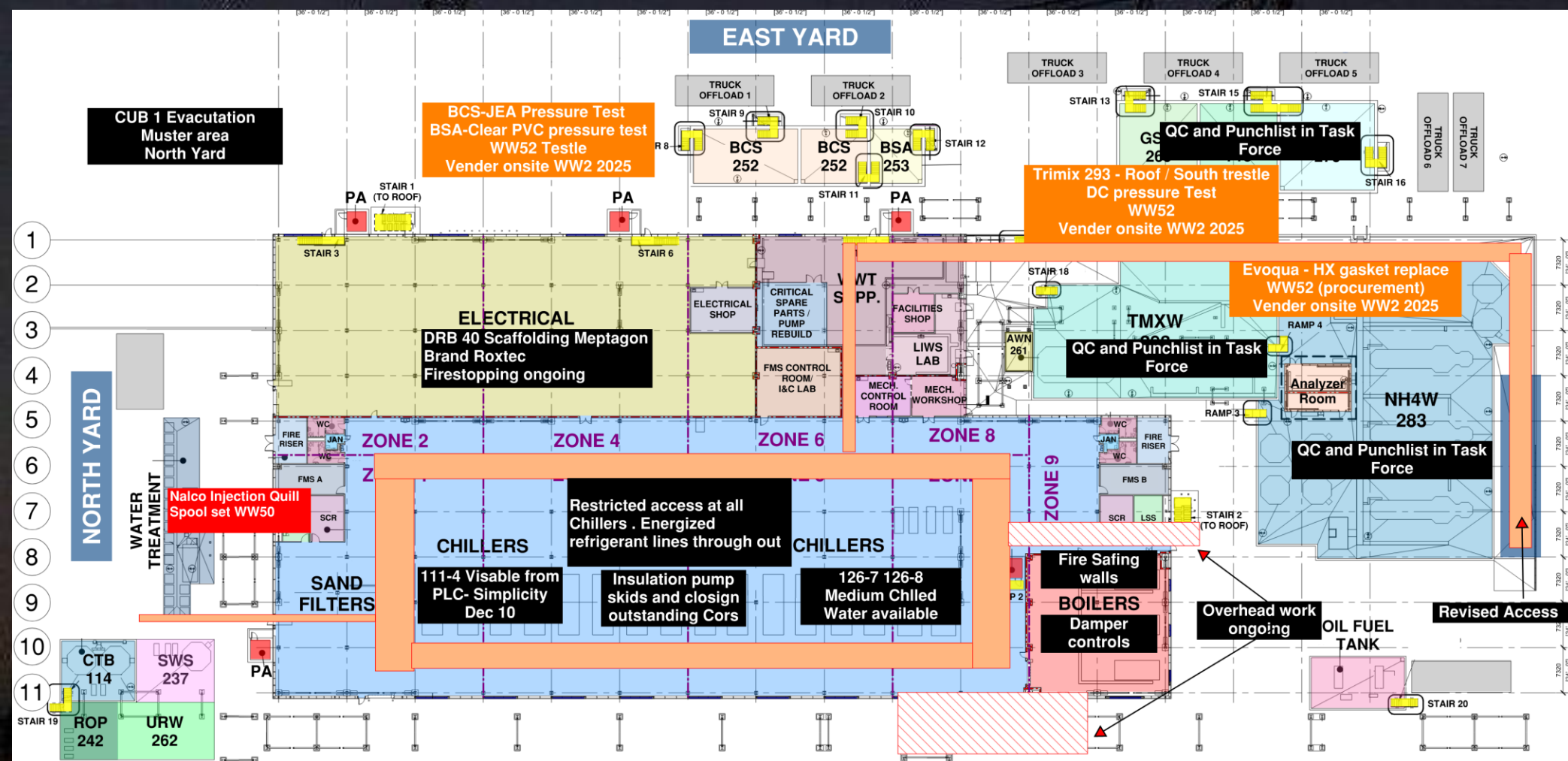


# CUB 1 Ops ready 12 weeks to go . Duct Trade Damage



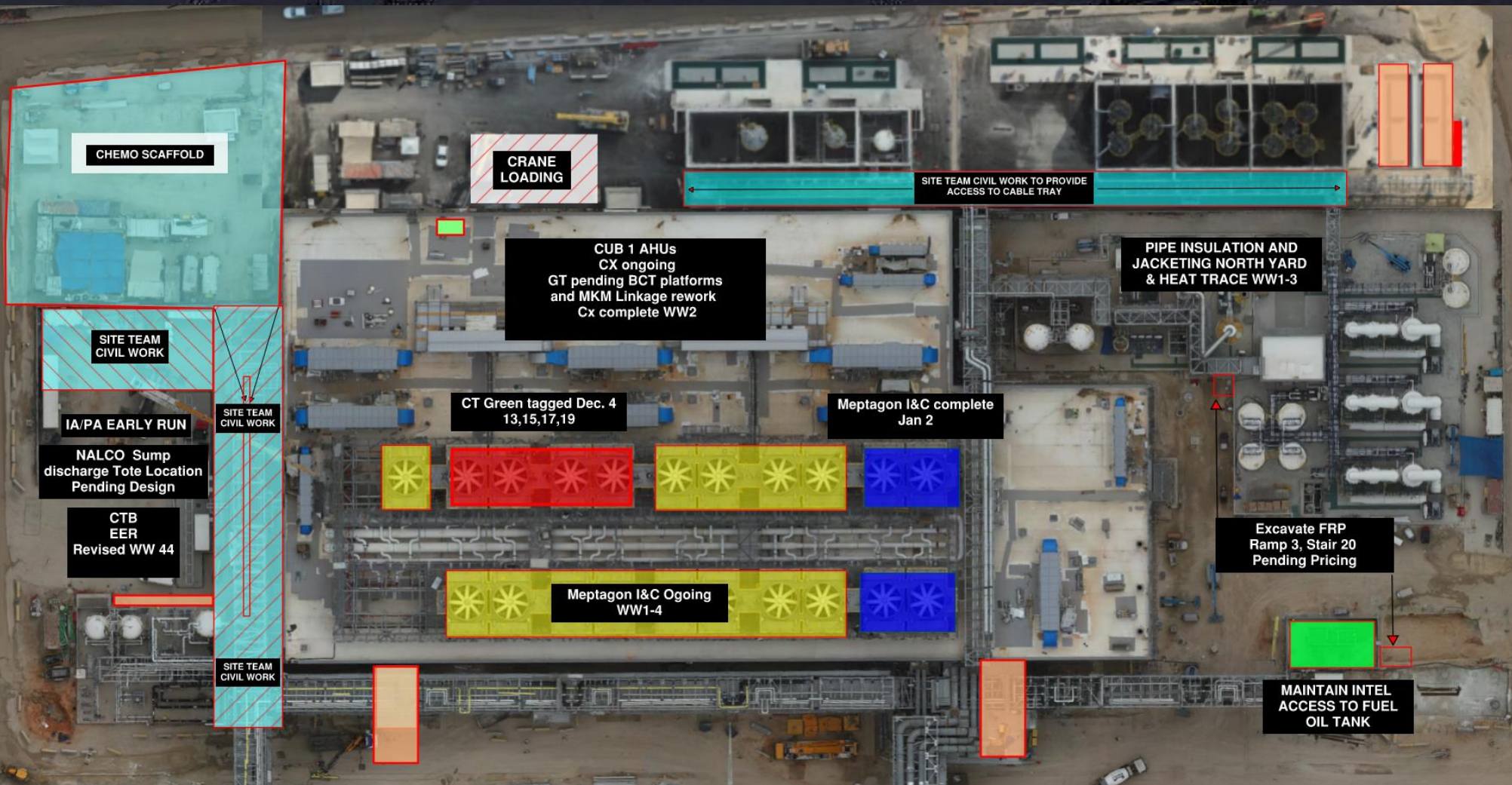


# CUB 1



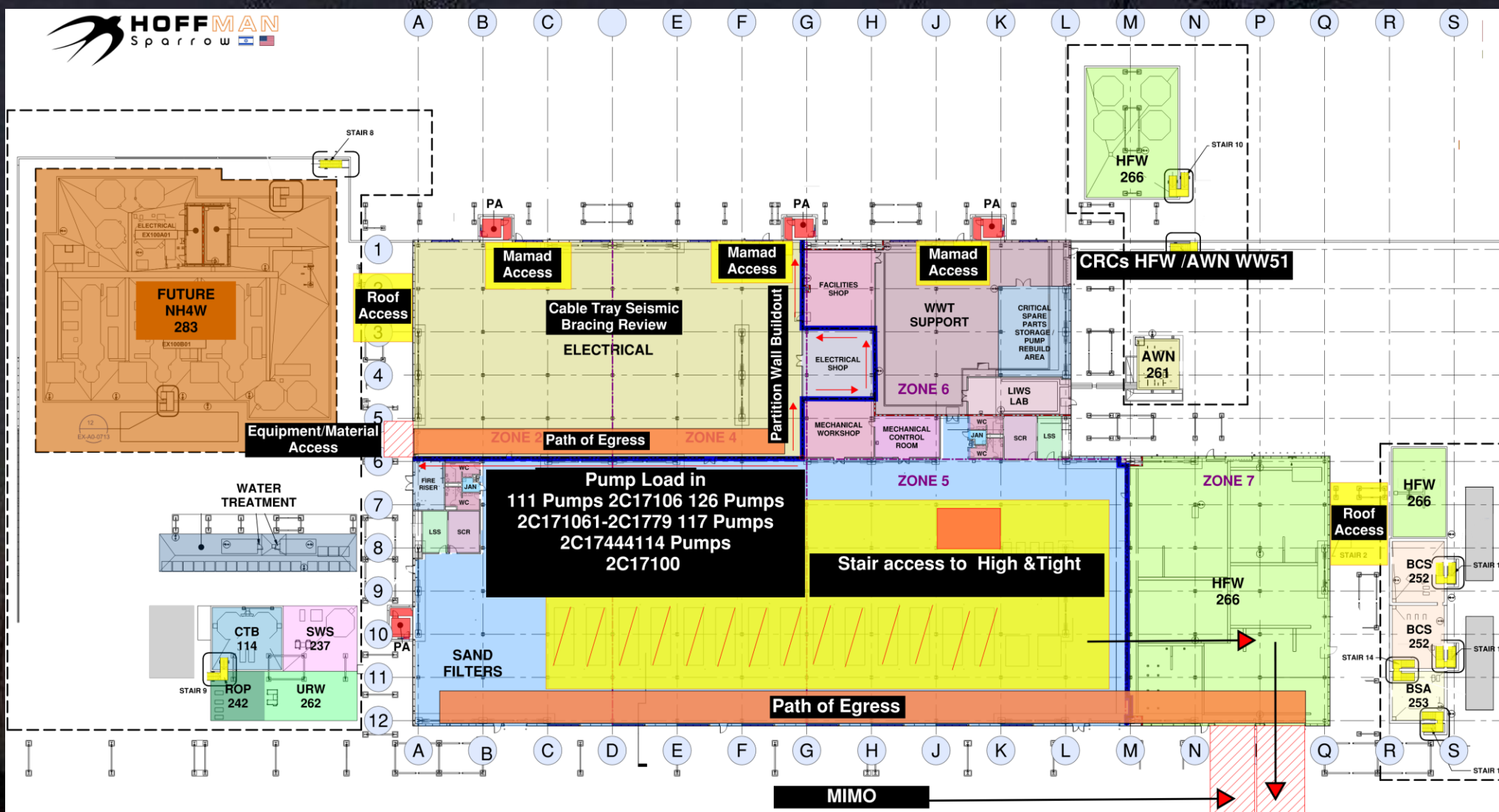


# CUB 1 – EXTERIOR/ROOF





# CUB 2- Load in and H&T



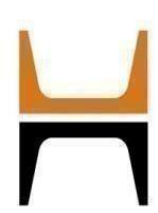
# CUB 2 – EXTERIOR/ROOF











**HOFFMAN CONSTRUCTION COMPANY**



**HOFFMAN**  
Sparrow  

**BGC - NDT**

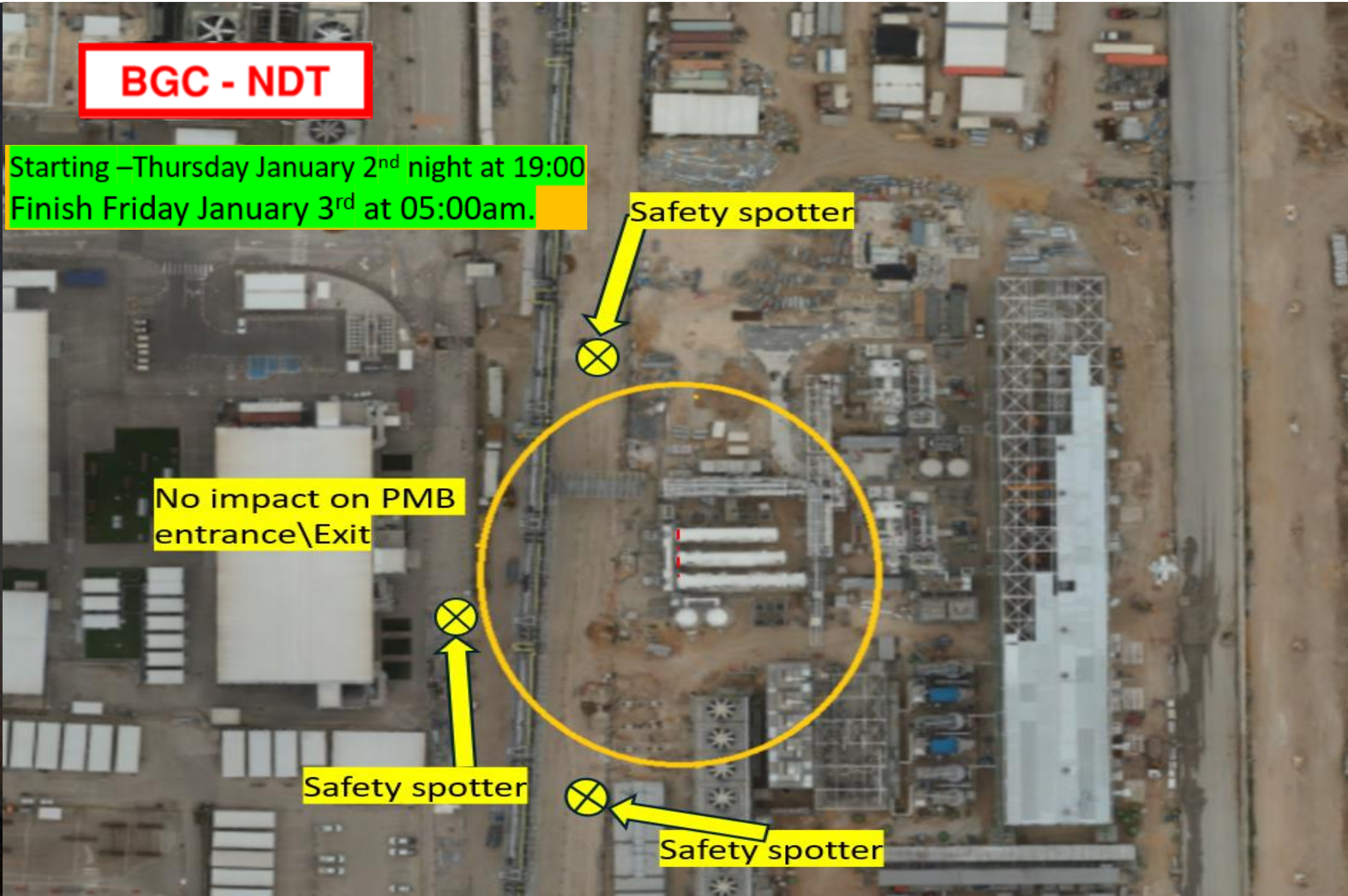
Starting –Thursday January 2<sup>nd</sup> night at 19:00  
Finish Friday January 3<sup>rd</sup> at 05:00am.

Safety spotter

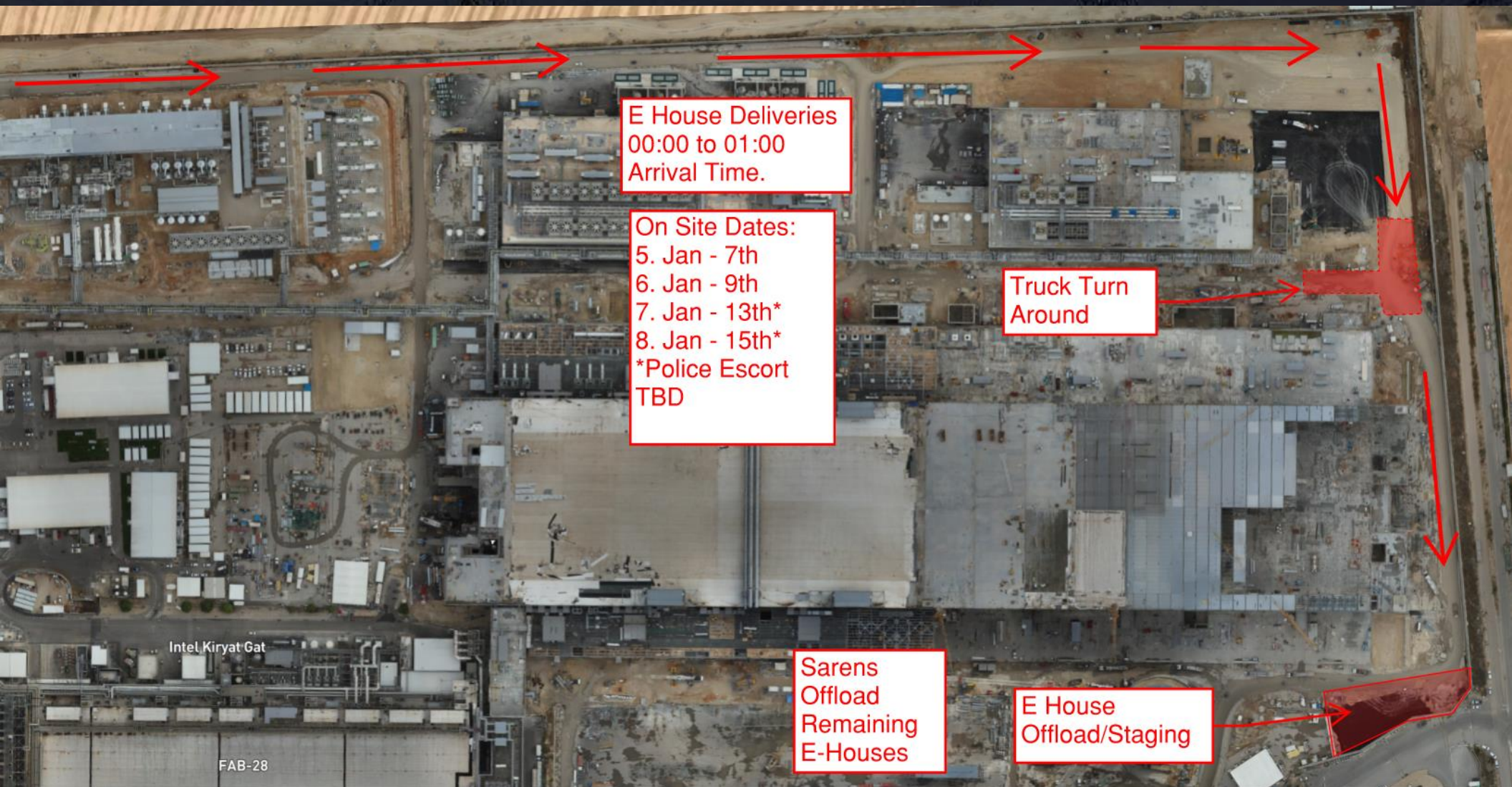
No impact on PMB  
entrance\Exit

Safety spotter

Safety spotter







E House Deliveries  
00:00 to 01:00  
Arrival Time.

On Site Dates:  
5. Jan - 7th  
6. Jan - 9th  
7. Jan - 13th\*  
8. Jan - 15th\*  
\*Police Escort  
TBD

Truck Turn  
Around

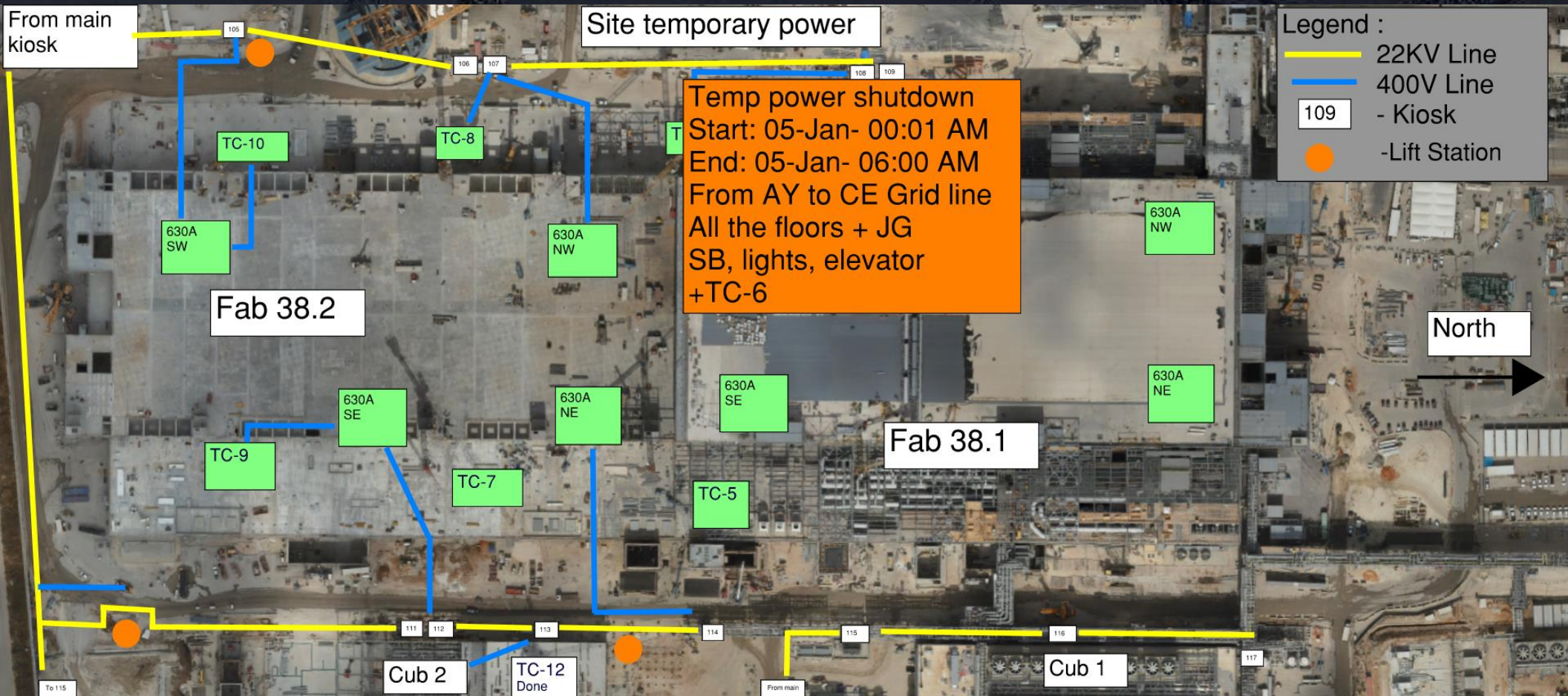
Sarens  
Offload  
Remaining  
E-Houses

E House  
Offload/Staging

Intel Kiryat Gat

FAB-28







# Daily Coordination Meeting

Site Logistics

600 Car Park

Boring





# Daily Coordination Meeting

## Site Logistics North





# Daily Coordination Meeting

Site Logistics  
South



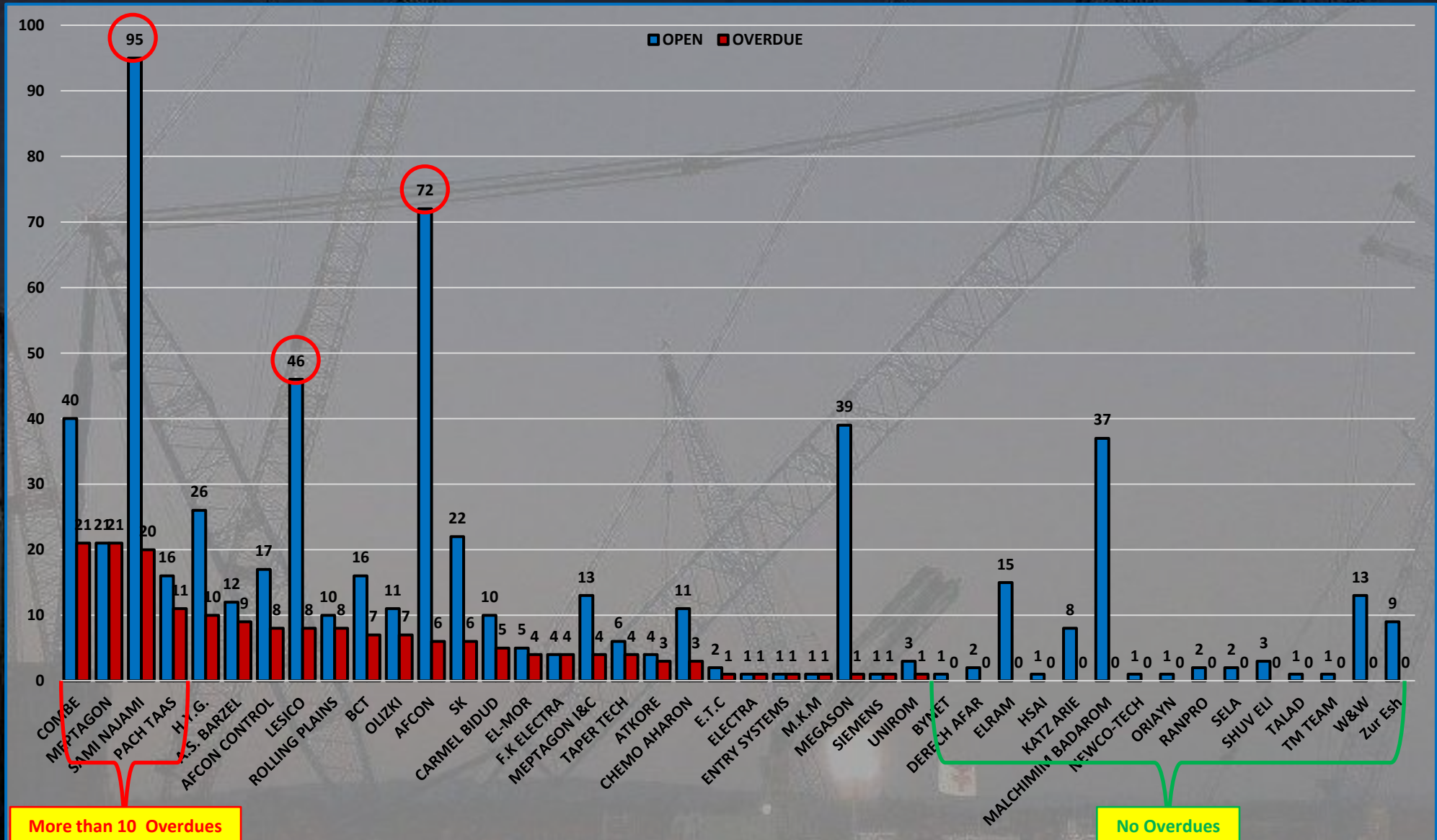




## COR Status by Subcontractor WW1

Open – 602 CORs

Overdue – 176 CORs





# Fit For Duty

- We've reminded everyone of helping ensure their workers are fit for duty each day this week. But today we want to make sure everyone understands what we mean by that.
- Fit for duty refers to the mental and physical state of a person being acceptable for them to be on a construction site.
- This means that they (and ourselves) are well rested, not under the influence of drugs or alcohol, not overly distracted, and not otherwise in a state that can expose themselves or others to harm.
- Many people are not aware of just how much these factors can impact our decision making, reaction times, and our coordination. Due to the impact that these factors can have, we cannot have people on site that are not fit for duty.
- If you discover one of your workers is not in a state that is safe for them to be at work, please do not risk it and simply send them home.
- If they are under the influence, or are otherwise a danger behind the wheel, have them call someone to pick them up.

# Daily Coordination Meeting



14:00 Sign In