

Daily Coordination Meeting



14:00 Sign In

Daily Coordination Meeting

General Topics:

- First full week back- keep your head in the game.



RWS-13 Roof
pour 10 PM

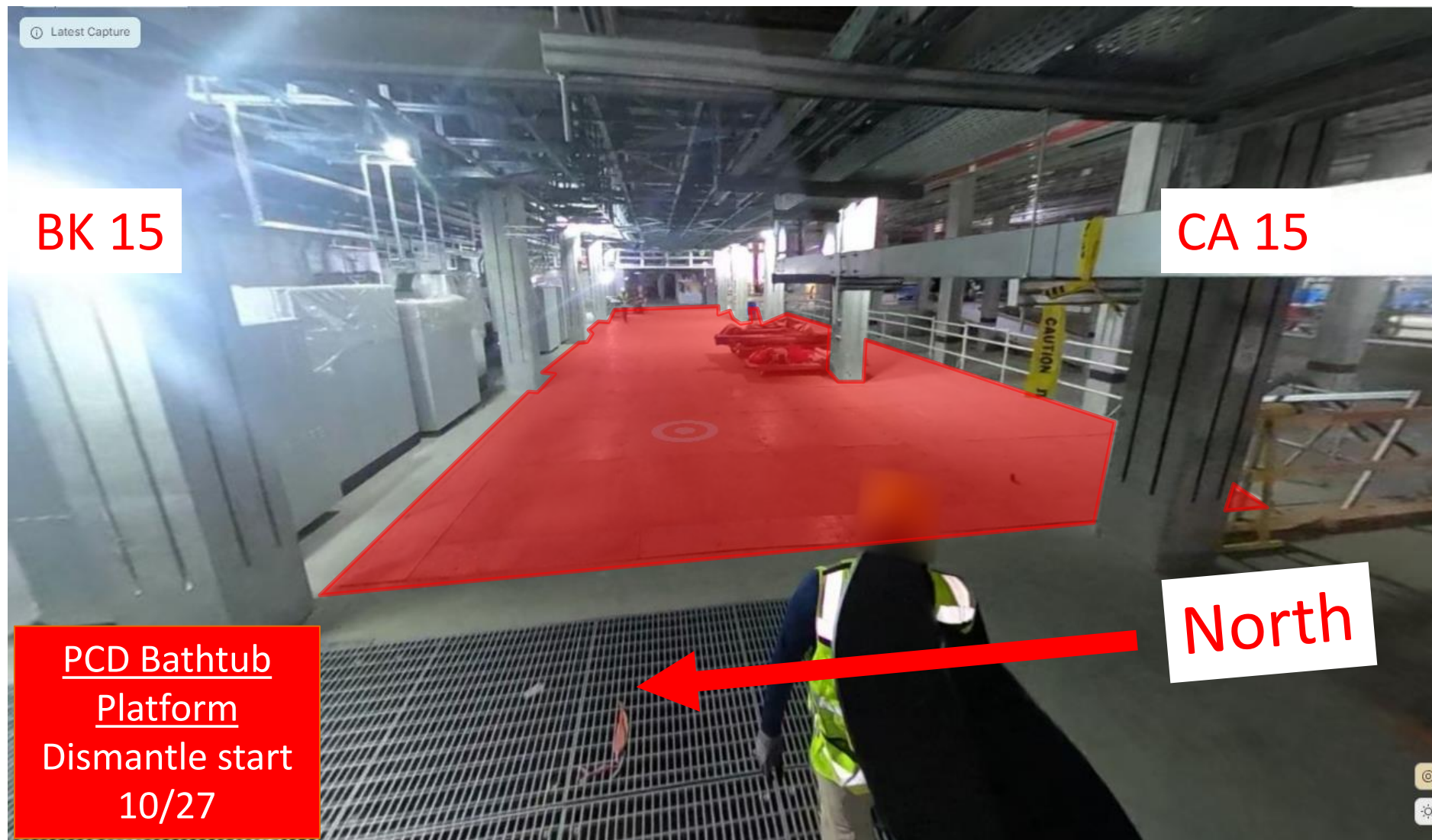
Truck off load #15
and #16
3:00 am

Truck of
& #16
3:00 am

RWS-13 roof pour
10:00 pm

FAB-28

UTILITY LEVEL MOD1

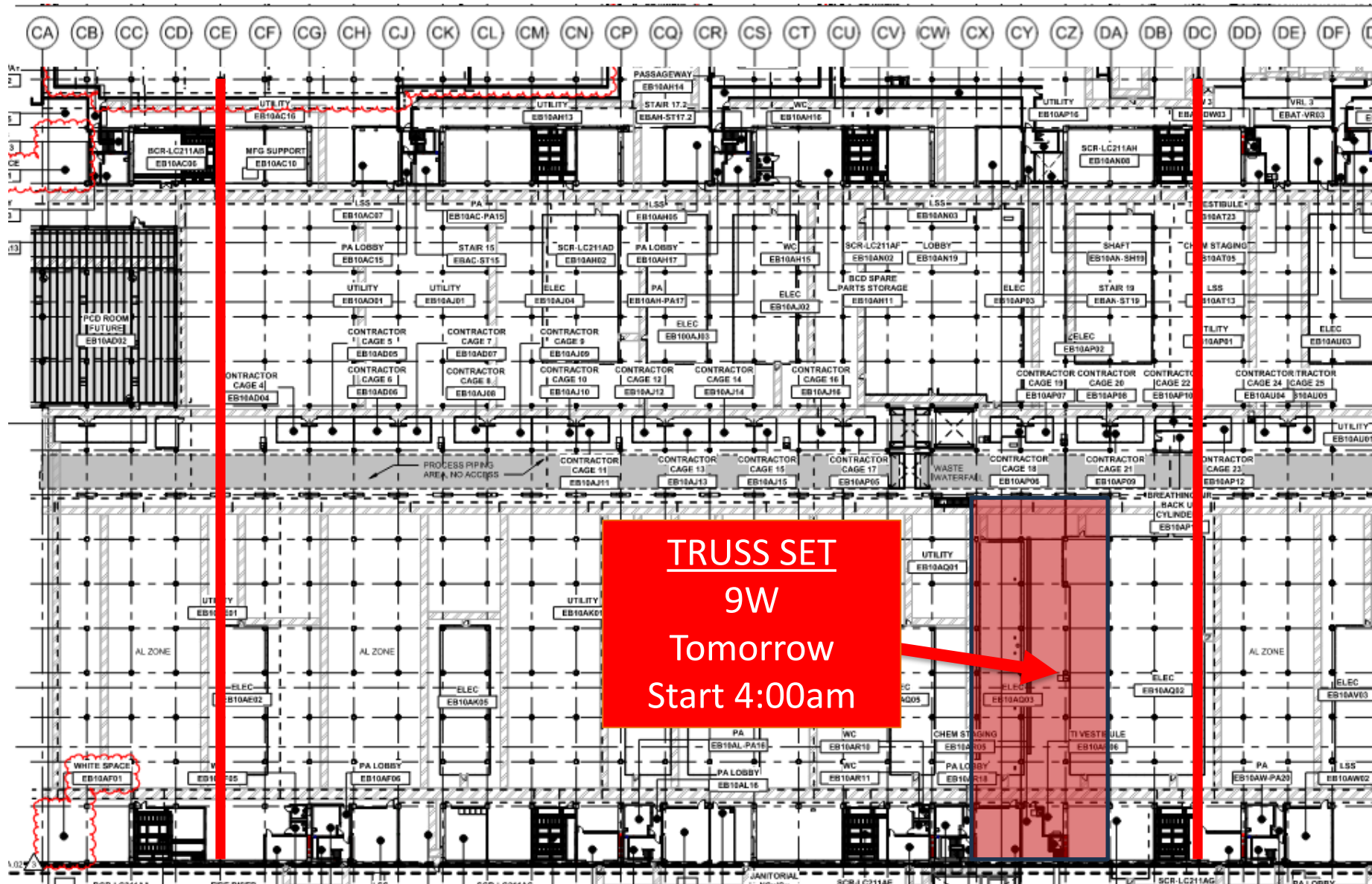




HOFFMAN CONSTRUCTION COMPANY



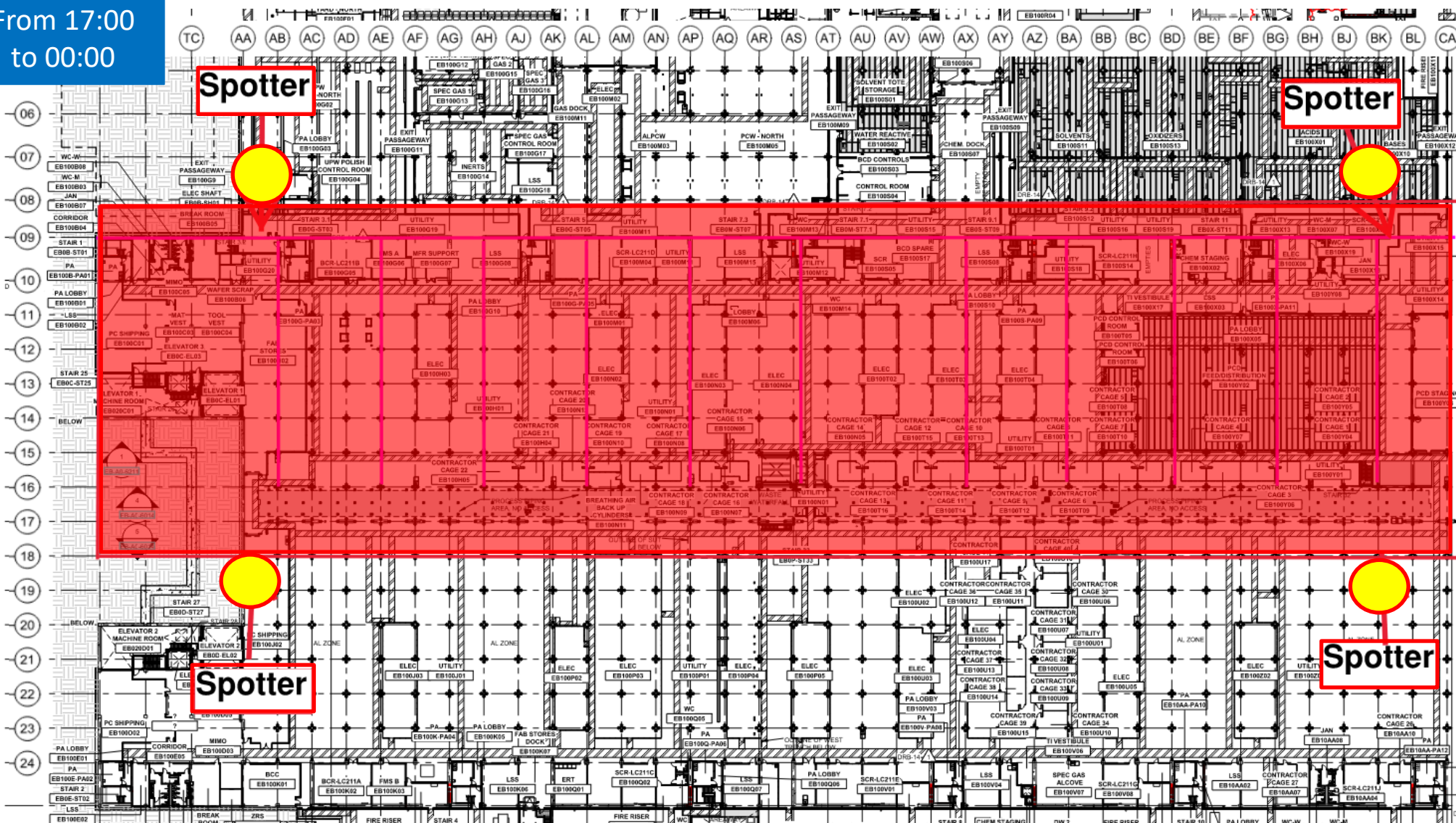
UTILITY LEVEL TRUSS



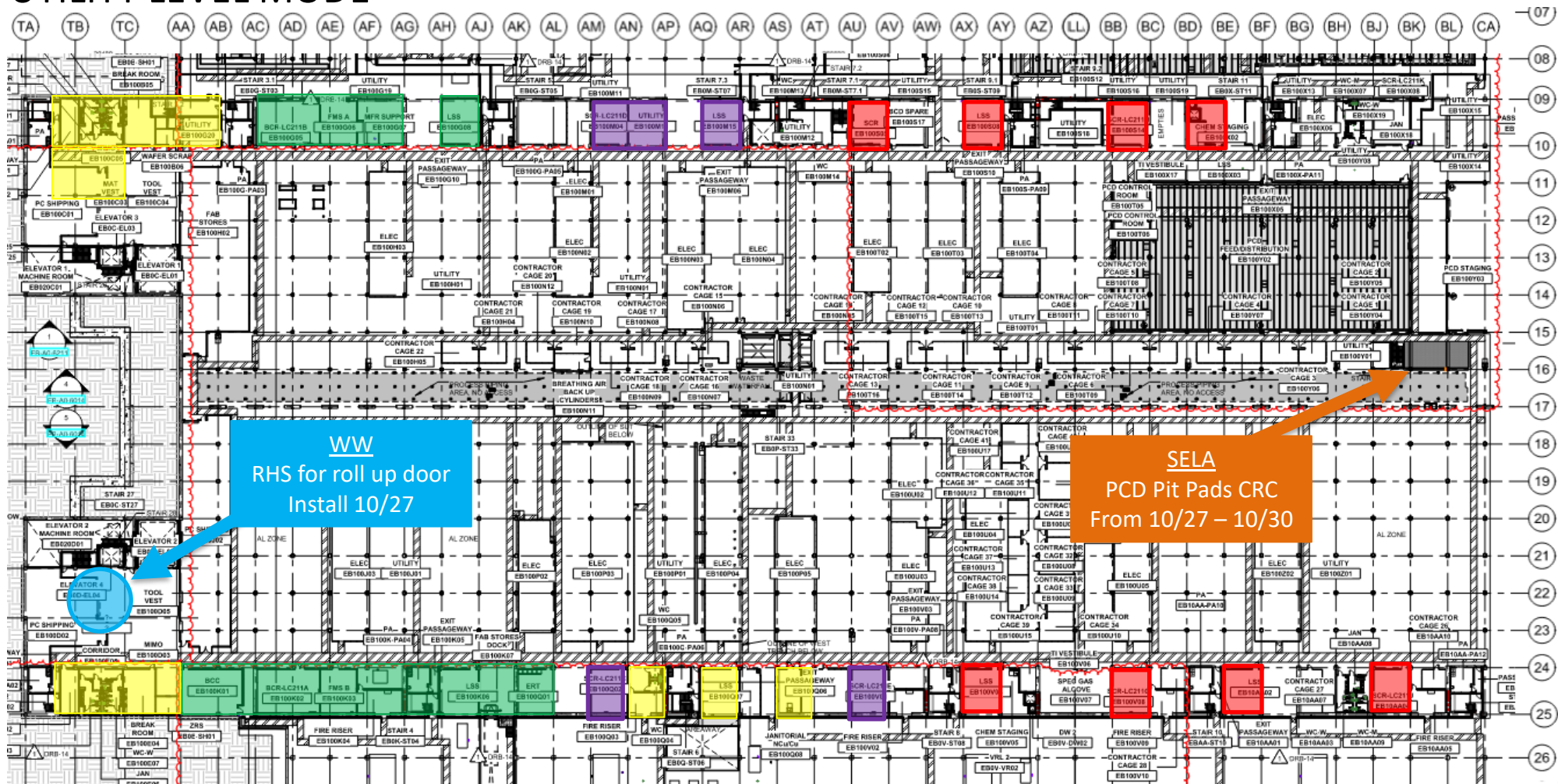
UTILITY LEVEL P.Test

SK

Press. Test
CW+CW SSH
10/28
From 17:00
to 00:00



UTILITY LEVEL MOD1



Pre-mold Rem dismantle
Should be uninstll

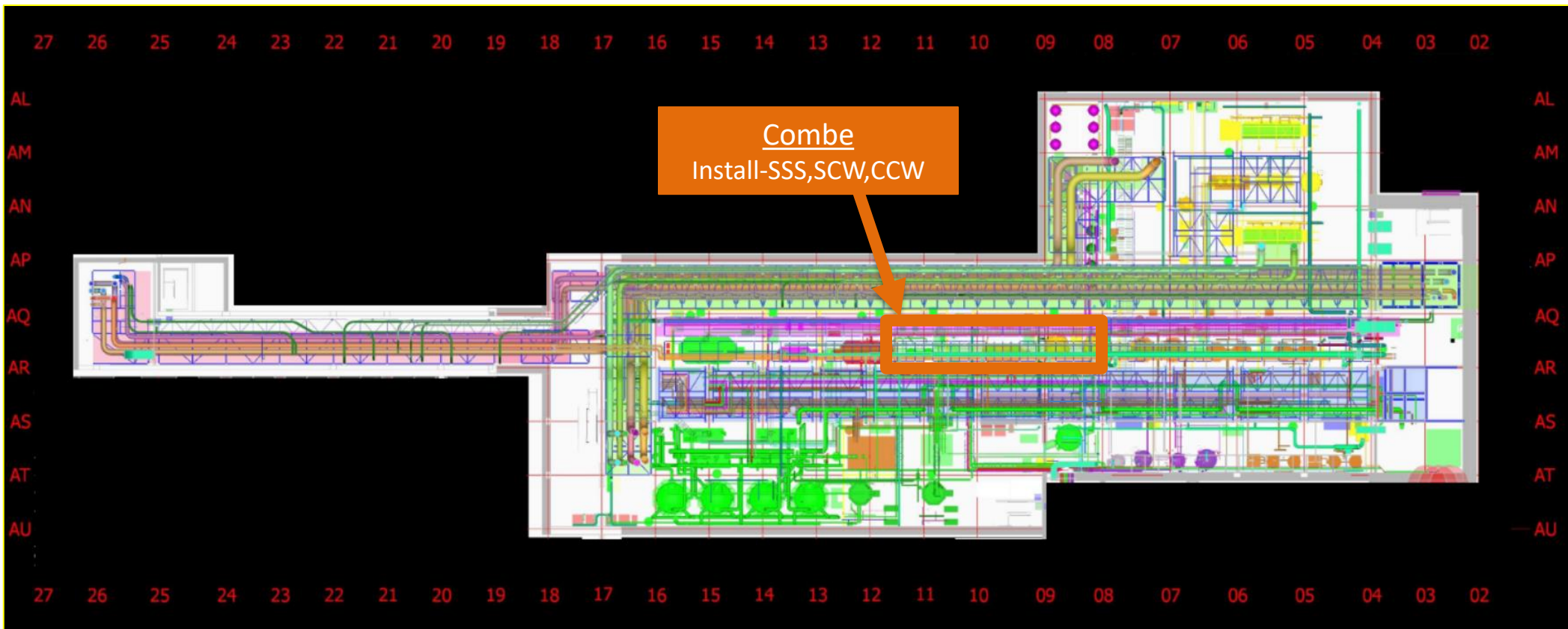
BELFOR
Mold remediation

ELRAM
Drywall install

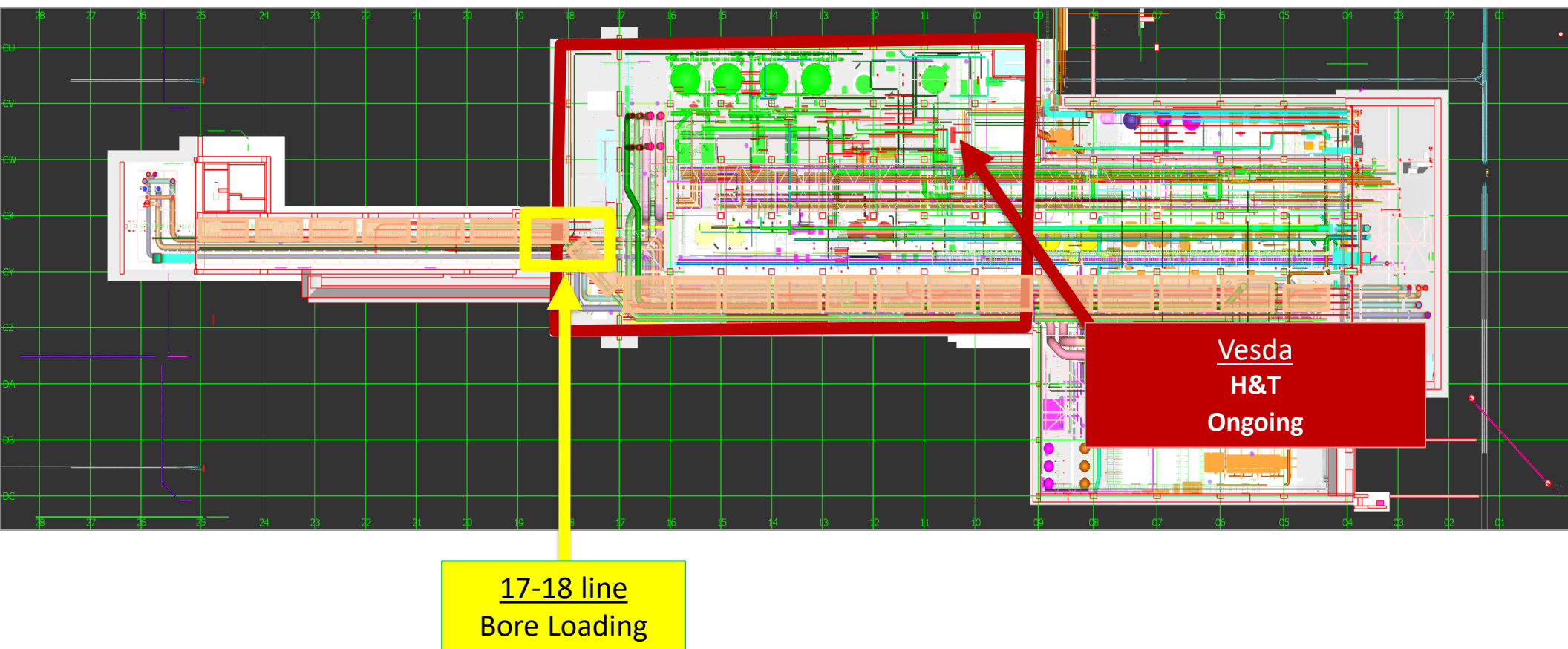
MEP+Elctrical
Ready for re-install



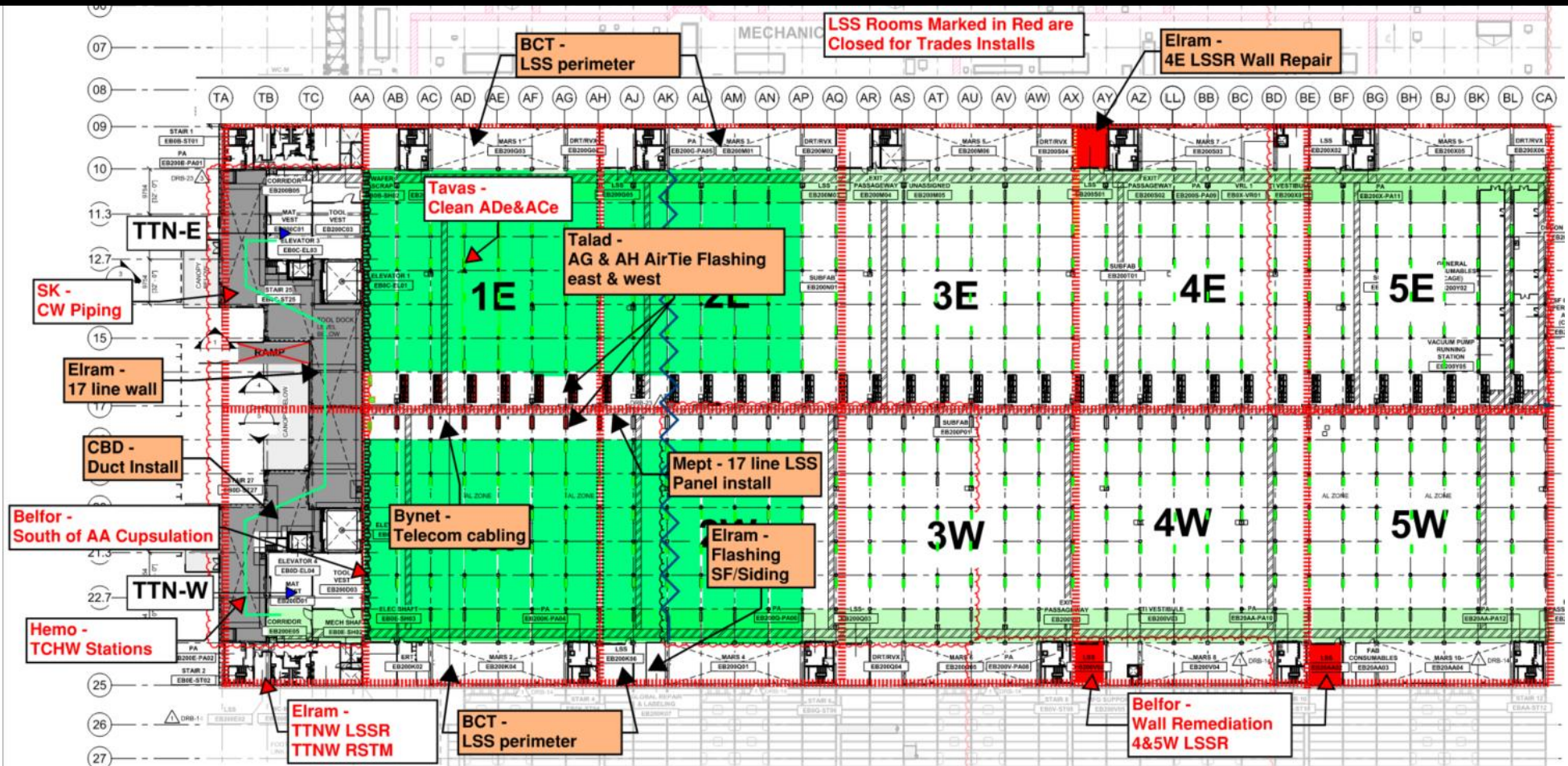
SUT 38.1 LEVEL

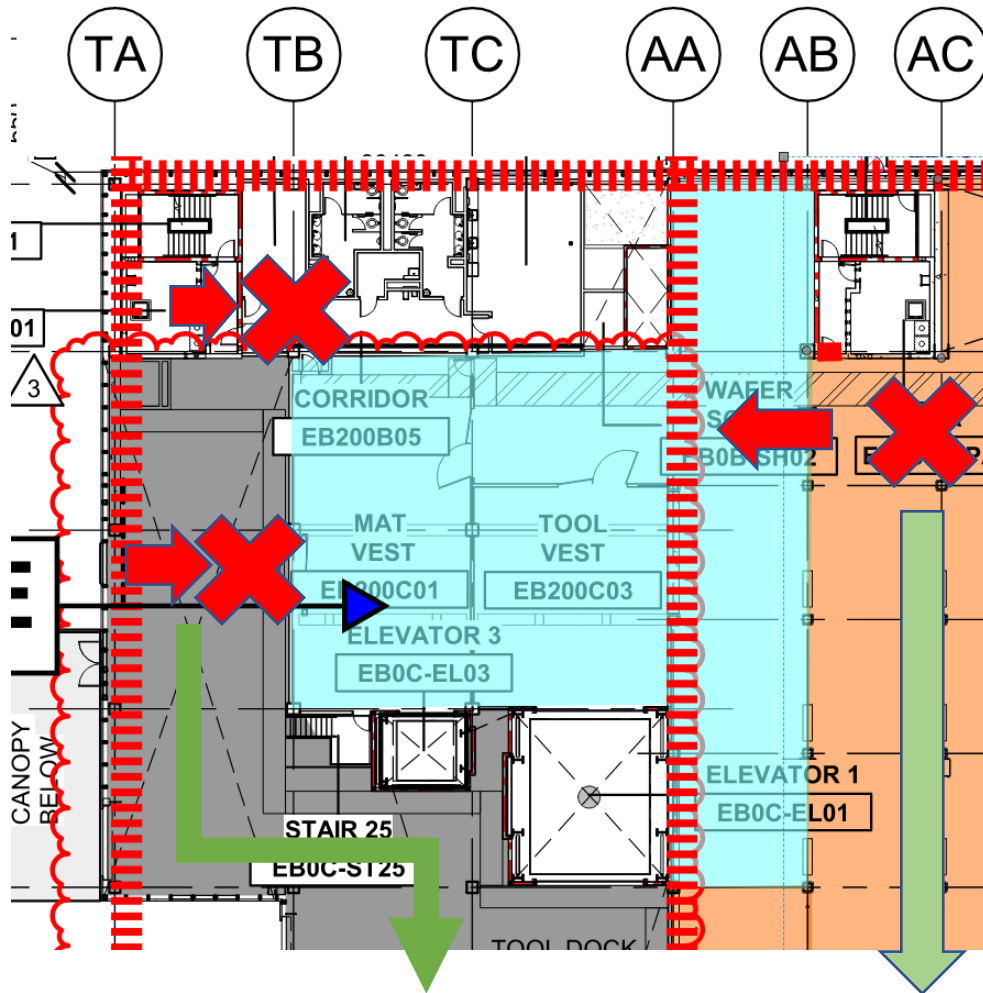


SUT 38.2 LEVEL



SUBFAB BUILDOUT MOD 1



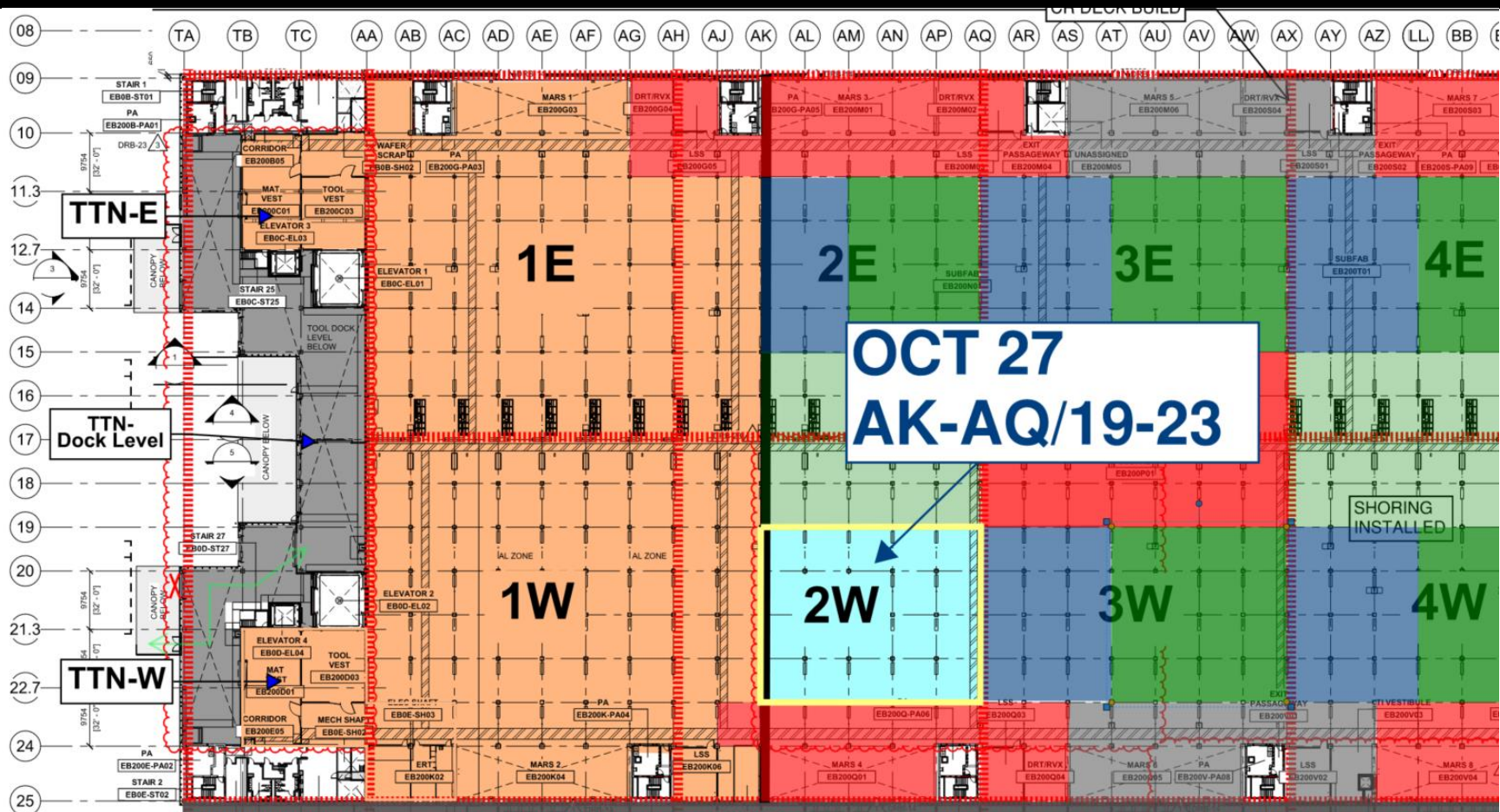


Sunday OCT 20th

CRC AAe & TTNE Upper Dock.

- Temp stairs – Access blocked.
- Stairs1 – Access blocked, SF level only.

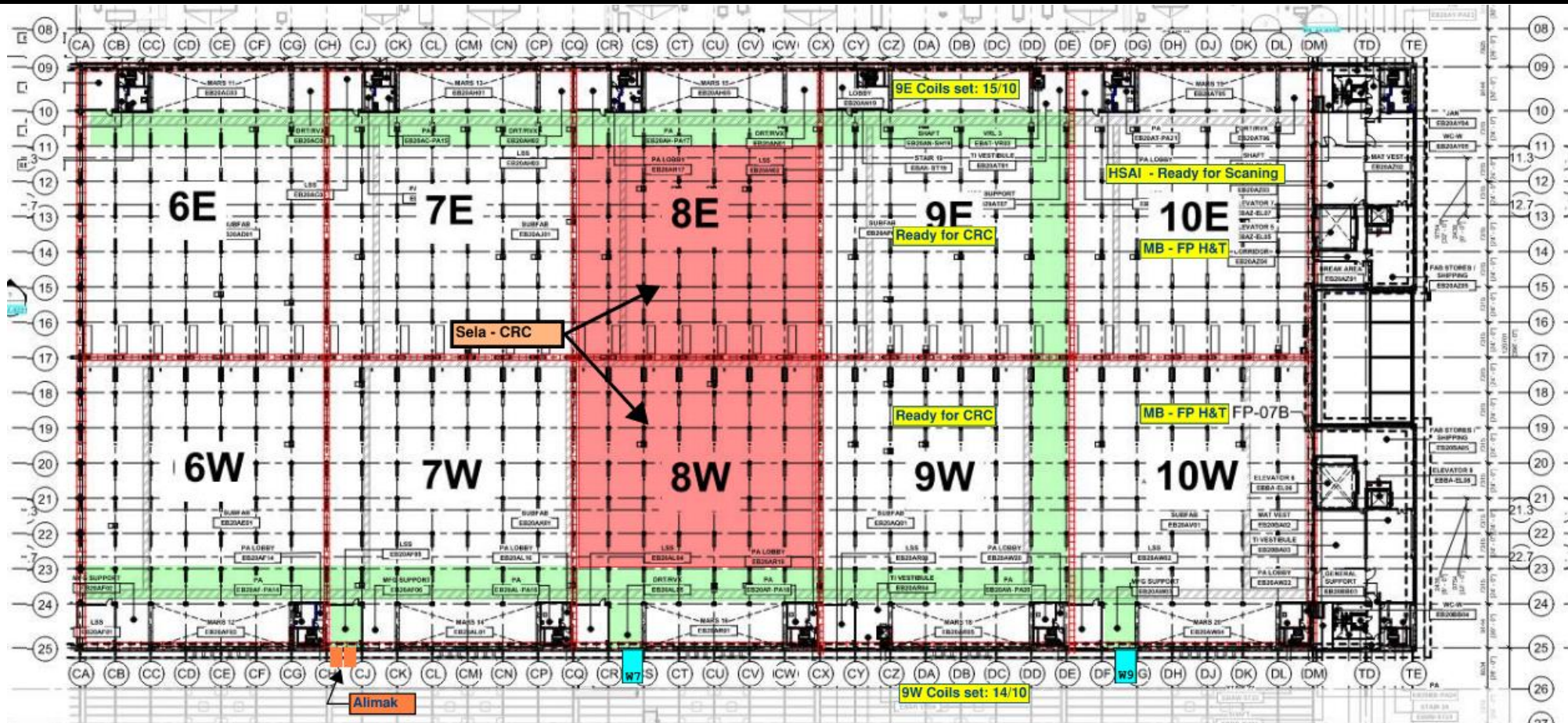
SUBFAB CRC TOPCOAT



BCT Pressure Test Exclusion Zone

**Cancelled for the
upcoming days.
Lack of gear.**

SUBFAB BUILDOUT MOD 2



Tavas + Talent solution
P1 cleaning 1E

D&P blades
install

Elram- AA line
columns+G1 wall
mock-up
Chemo- Hangers
install
SN - Beams layout

1E

All trades should do
training and the have
correct equipment to
work in this area

CRC AA-AK/17-23

Sela: CRC Done

Talad- Cutting around lids

2

SELA CRC PREP

3

L
I
N
K

SELA-prepping 21-23
lines on 1w. Will be
done by Thursday. No
overhead activities
while spraying!

CR level:
Afcon - Cable trays, modules and stickers, 2E, 2W, 3E, 3W, 4E
MB- 1W drops, 2E- 2W pipes and drops
Elram - 9-10, 24-25 columns/shaft walls. AA line column wraps
VW/JS - 17-18 line added beams+ AS south stocker beams
Meptagon - I&C 2W
D&P - 5E blades install.
Tavaresh - 5E blades, 1W-1E shaft walls
HYG- 5W Litho crane steel
T - Duct prep for test AA-AH east
Talad- 1W 4DA holes drilling, 1W cutting around steel, 17 line bracing
TMT - Safety net install

2E

3E

4E

5E

Talad-ongoing beam bracing across 17 line+aa/ab

2W

3W

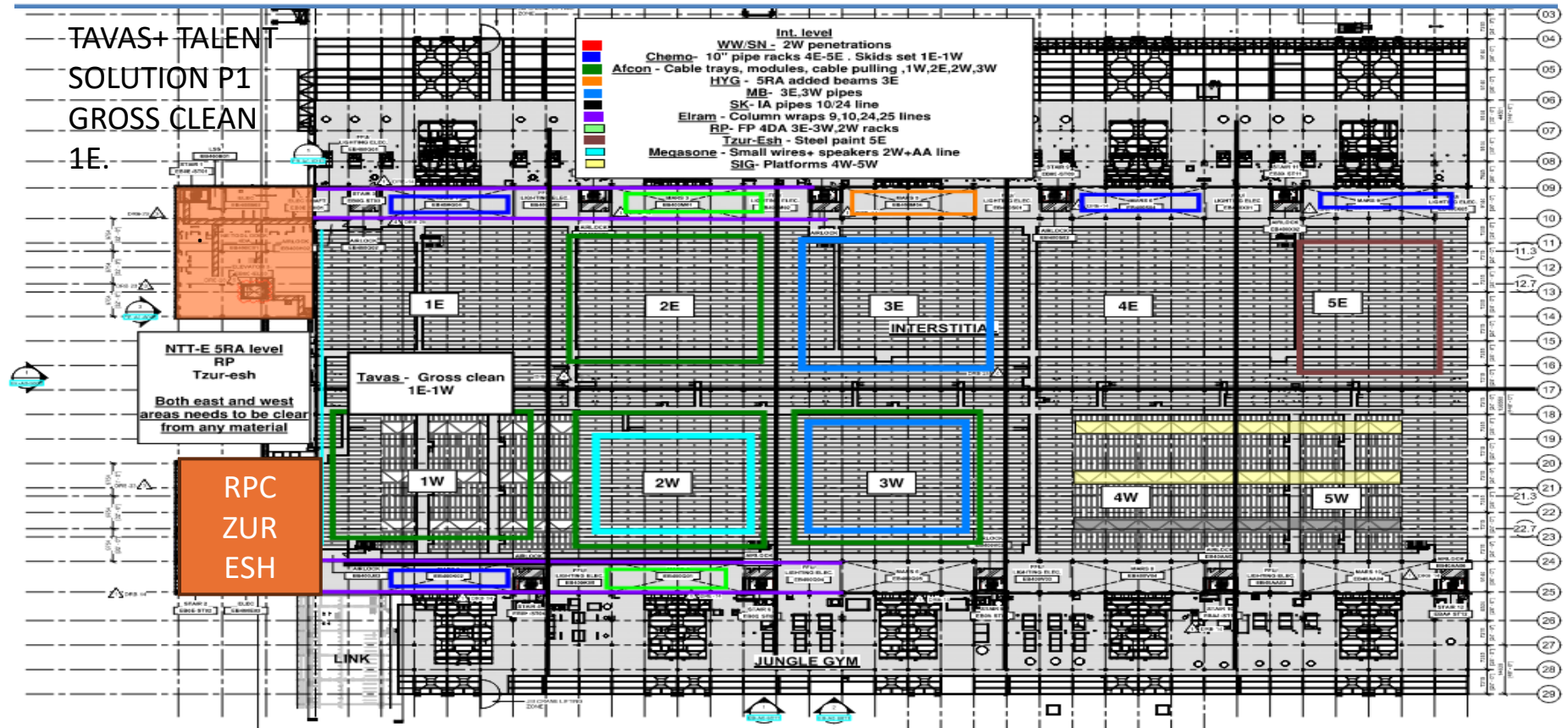
4W

5N

Link

Path-Taas - exhaust duct install and tie in
SIG- Mobile scaffold install
Afcon- Rack install
Newcotech- temp wall
Afcon - cable tray & racks iNstall

Sella's next prepped
areas.





HOFFMAN CONSTRUCTION COMPANY



MOD 2 STEEL ERECTION

Truss Yard:
RP and Tzur-Esh to start FP and paint trusses on night shift

Infill ongoing

Tzur-esh
MOD2 paint

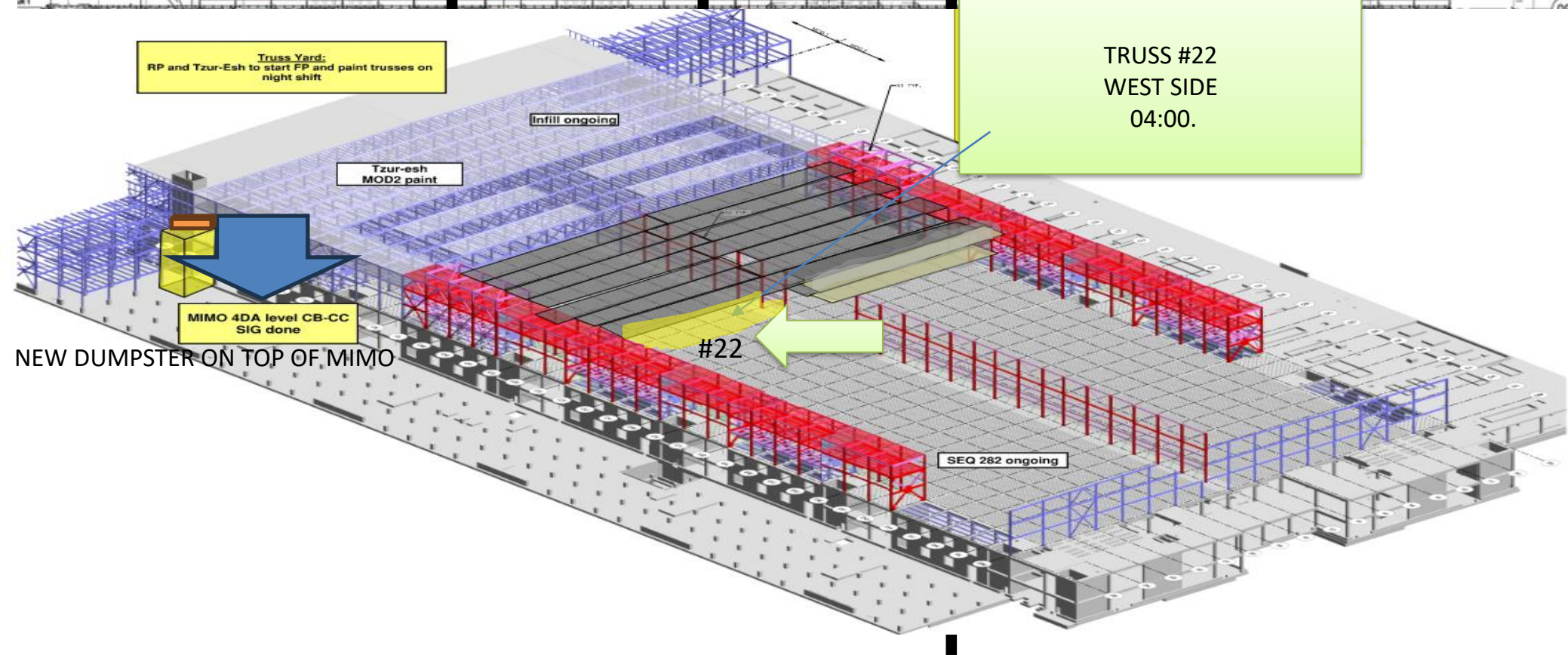
MIMO 4DA level CB-CC
SIG done

TRUSS #22
WEST SIDE
04:00.

#22

SEQ 282 ongoing

NEW DUMPSTER ON TOP OF MIMO

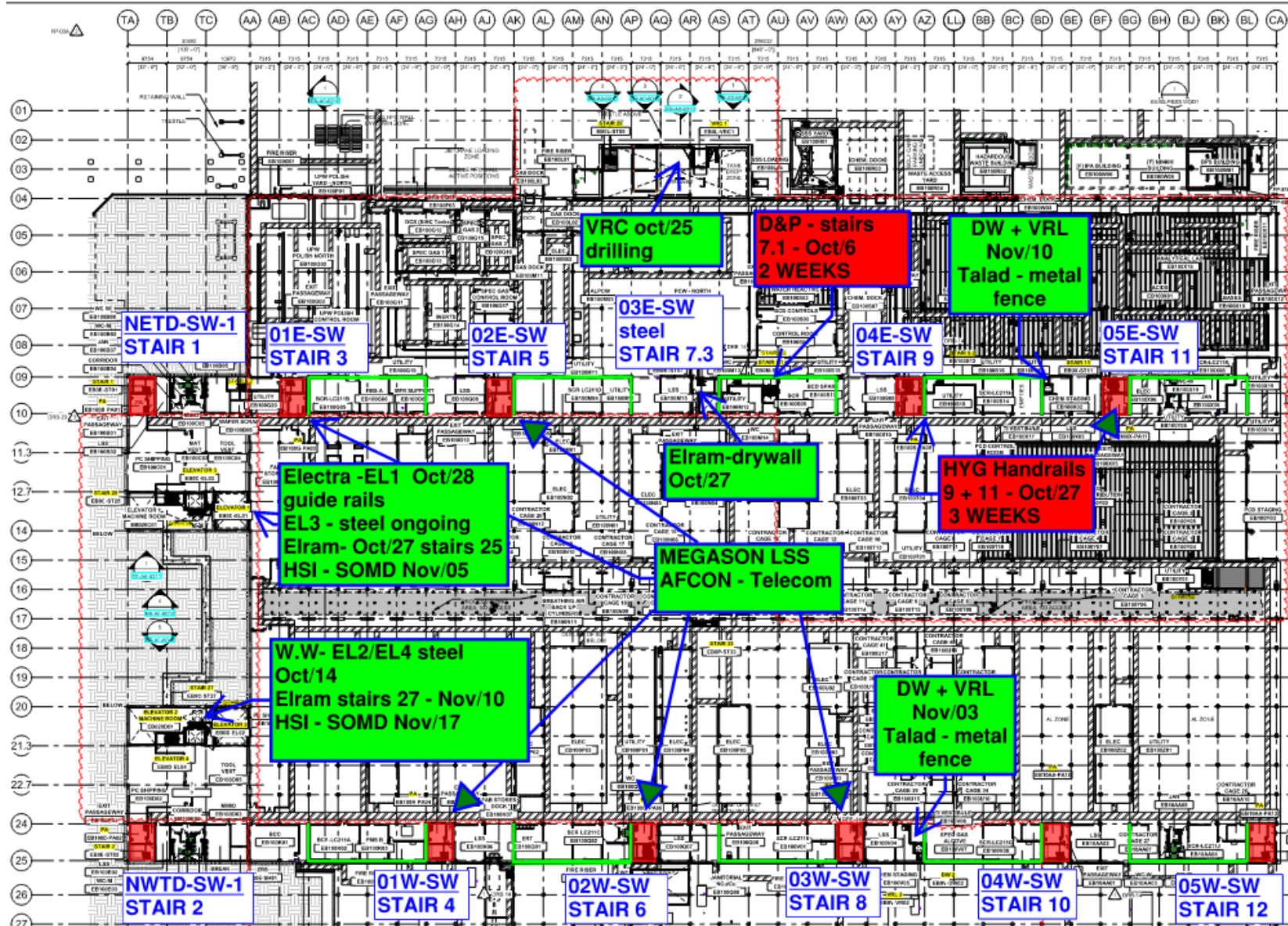


Clean Room Wall Of Shame



Sami- najami





Siding - East FAB - PSSS

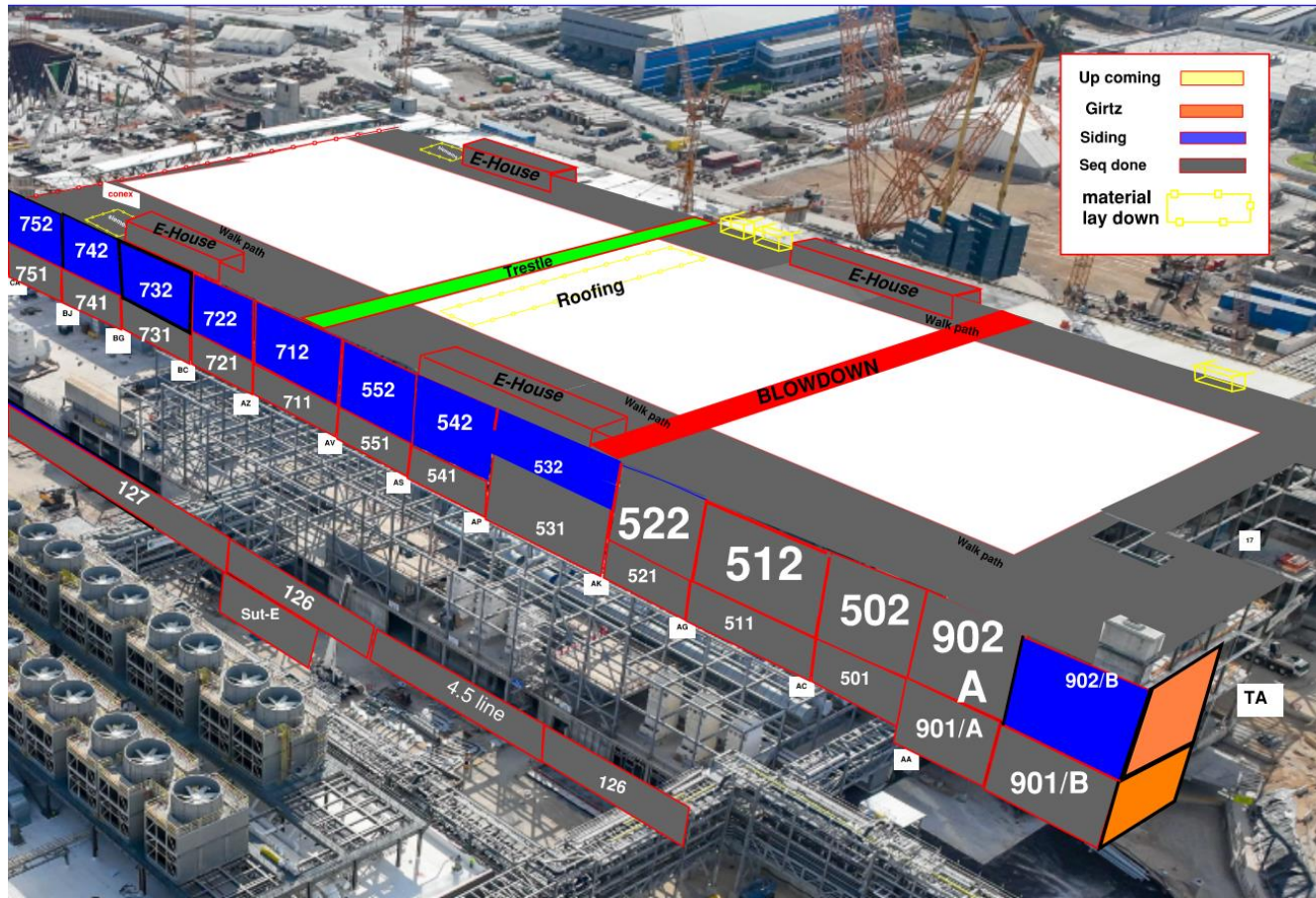
BLOWDOWN 30%

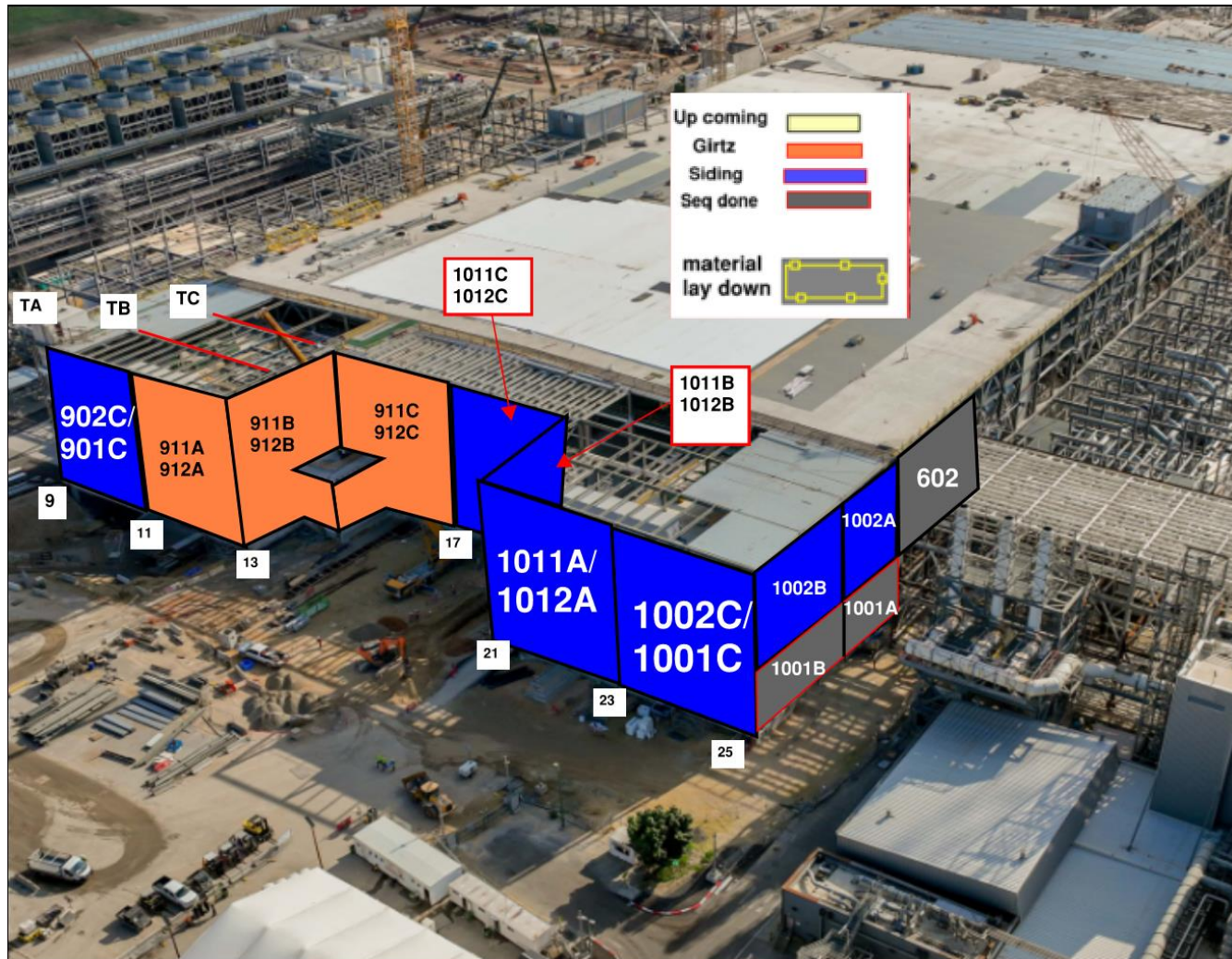
[illegible]

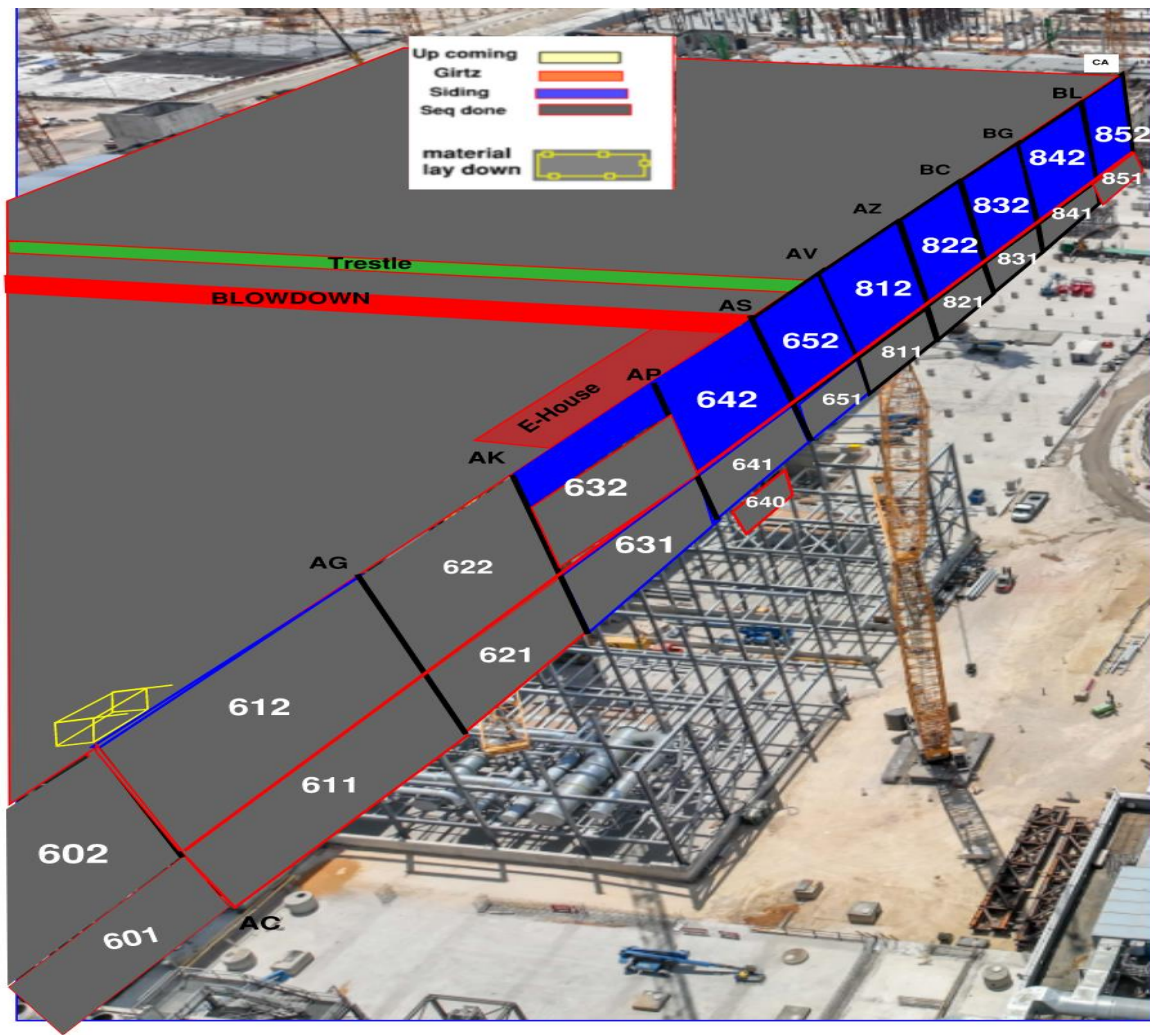
Siding - West FAB - JYG

BLOWDOWN 30%

[illegible]

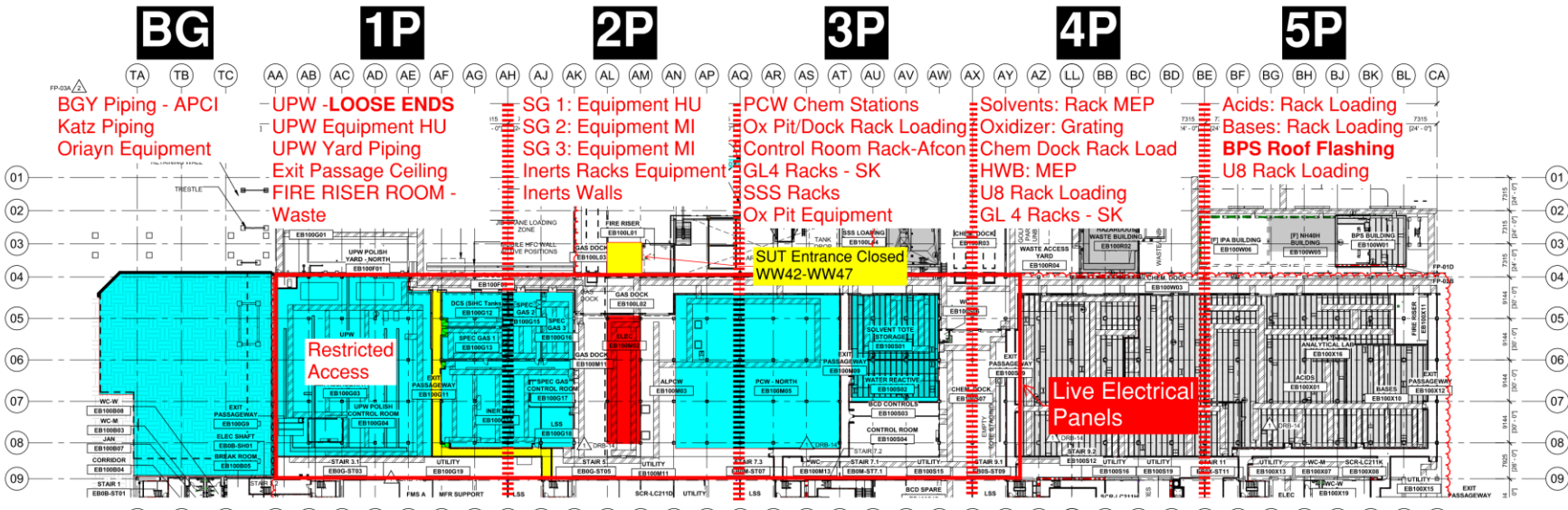




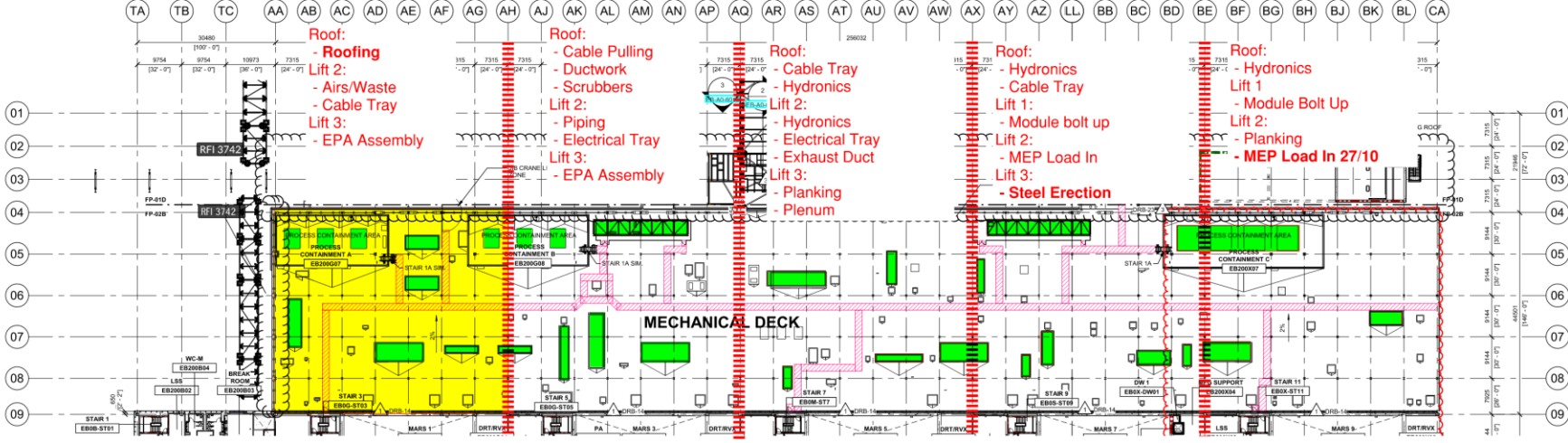


PSSS.1

Utility Level
1YA

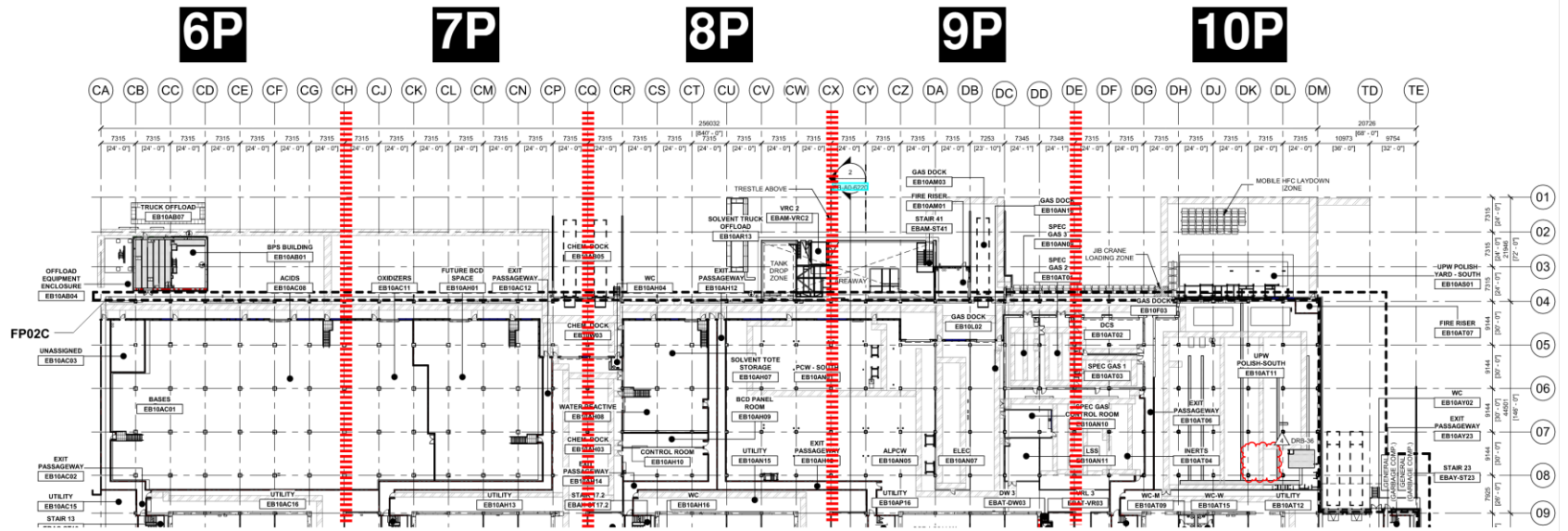


PSSS Roof
2SA

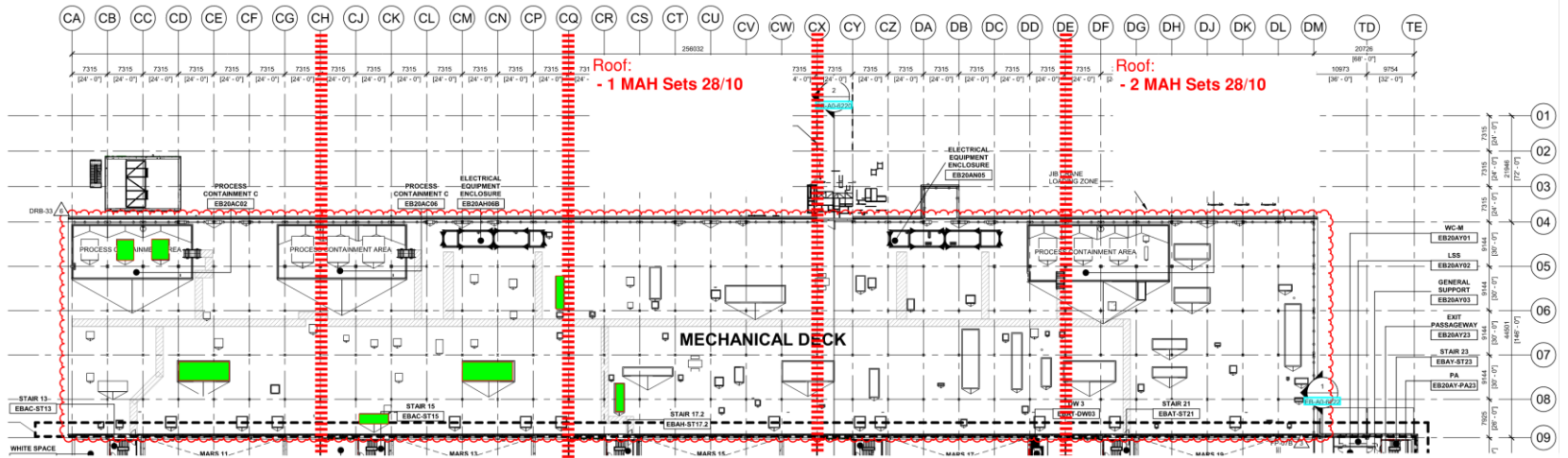


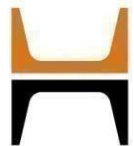
PSSS.2

Utility Level 1YA



PSSS Roof 2SA





WJG 01J, 02J LIFT 2 & 3

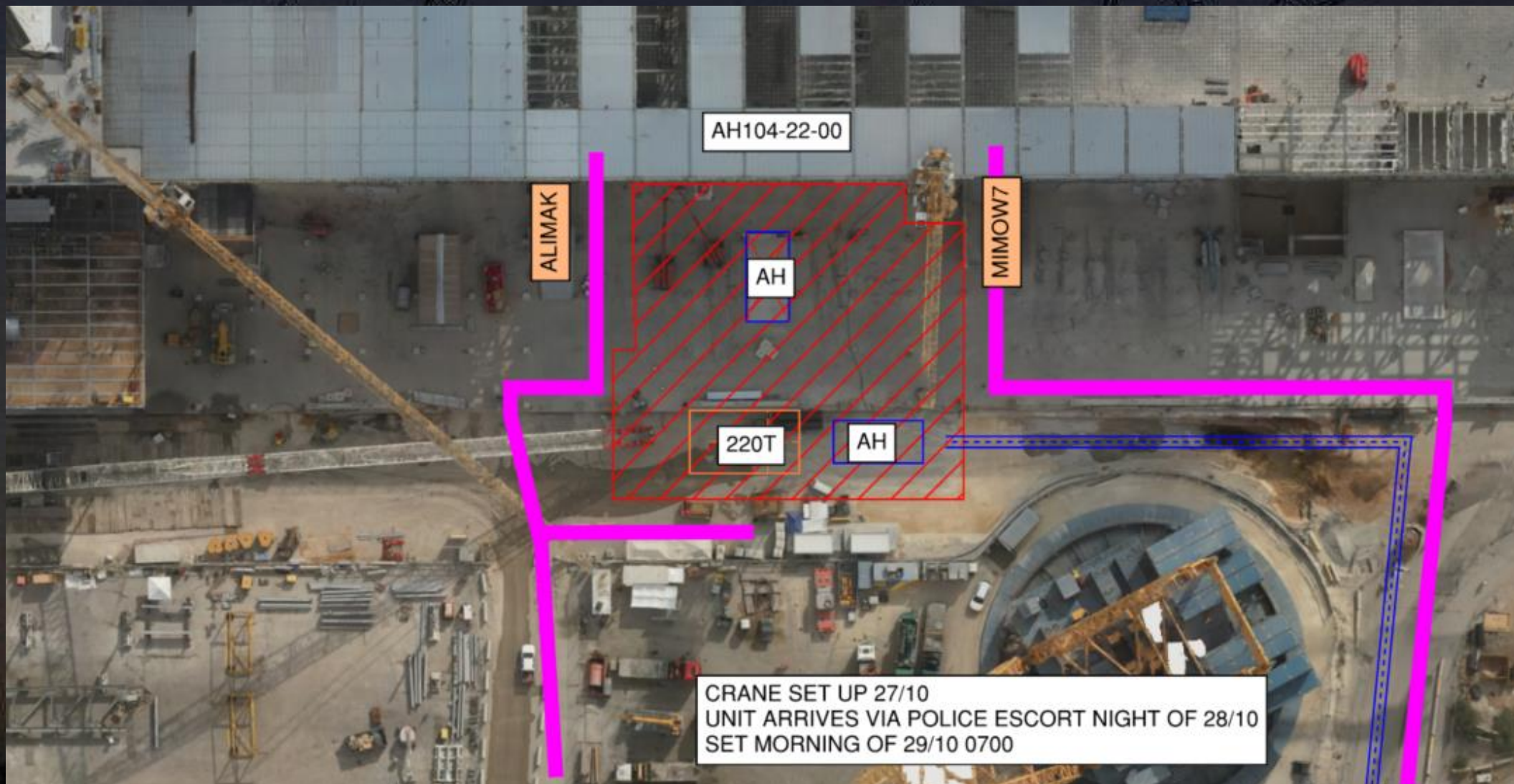




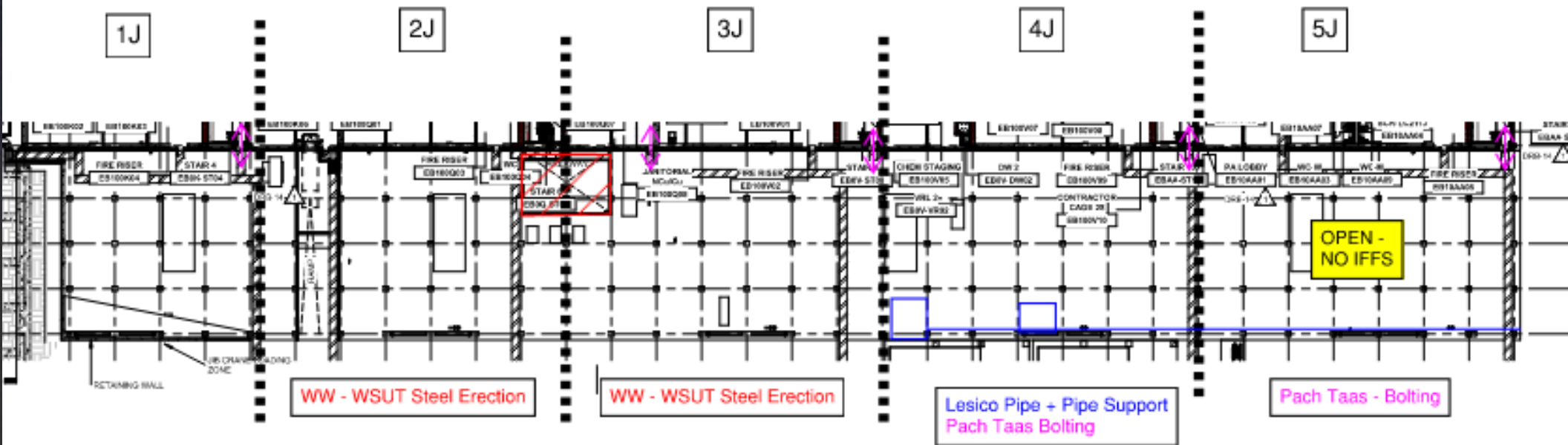
WJG 03J, 04J, 05J LIFT 2 & 3



AH104-22-00 Set – 29/10



WJG UTILITY LEVEL BUILD OUT

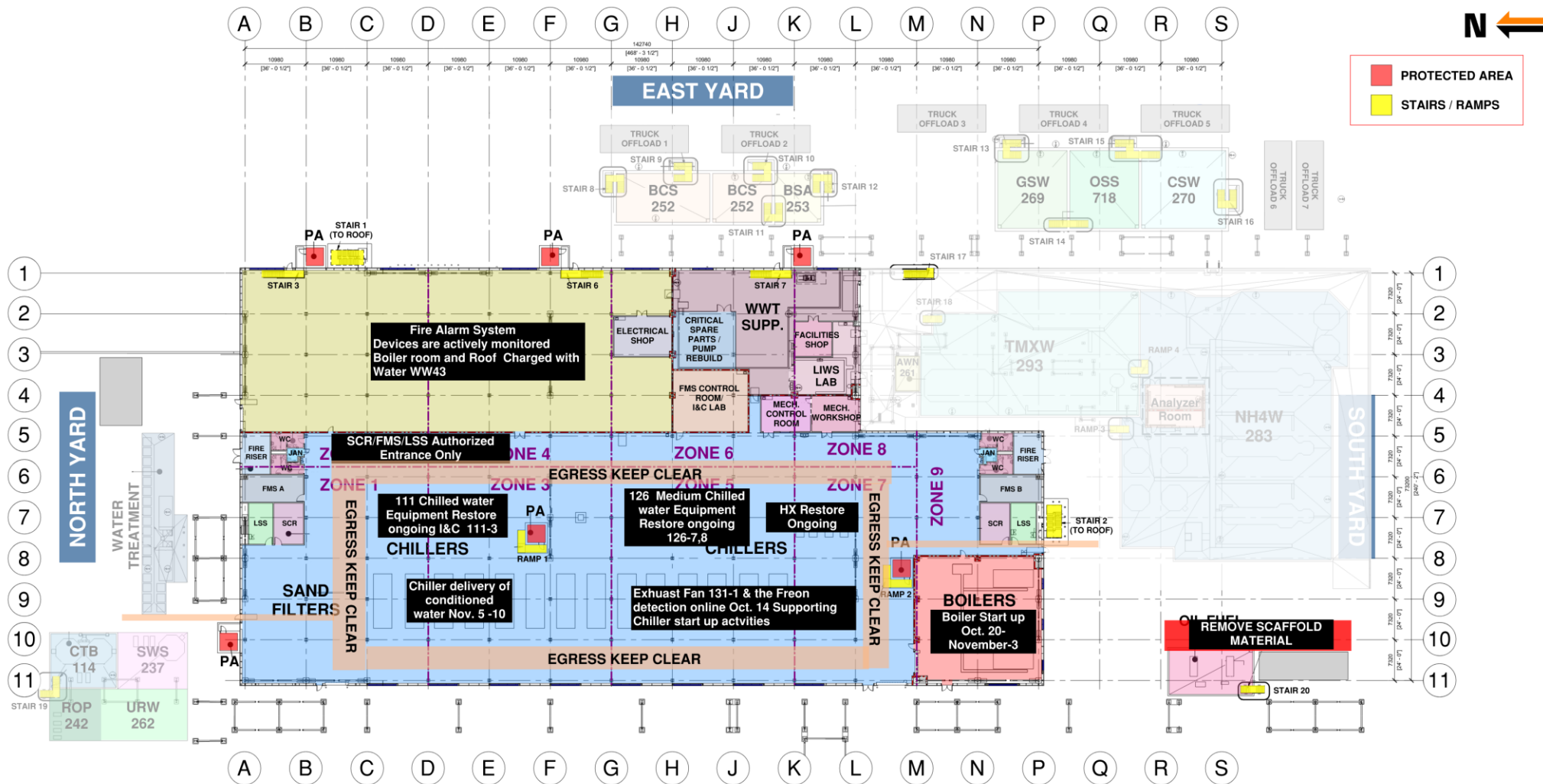




CUB 1

CUB 1 COORDINATION MAP

UPDATED



CUB 1 – EXTERIOR/ROOF

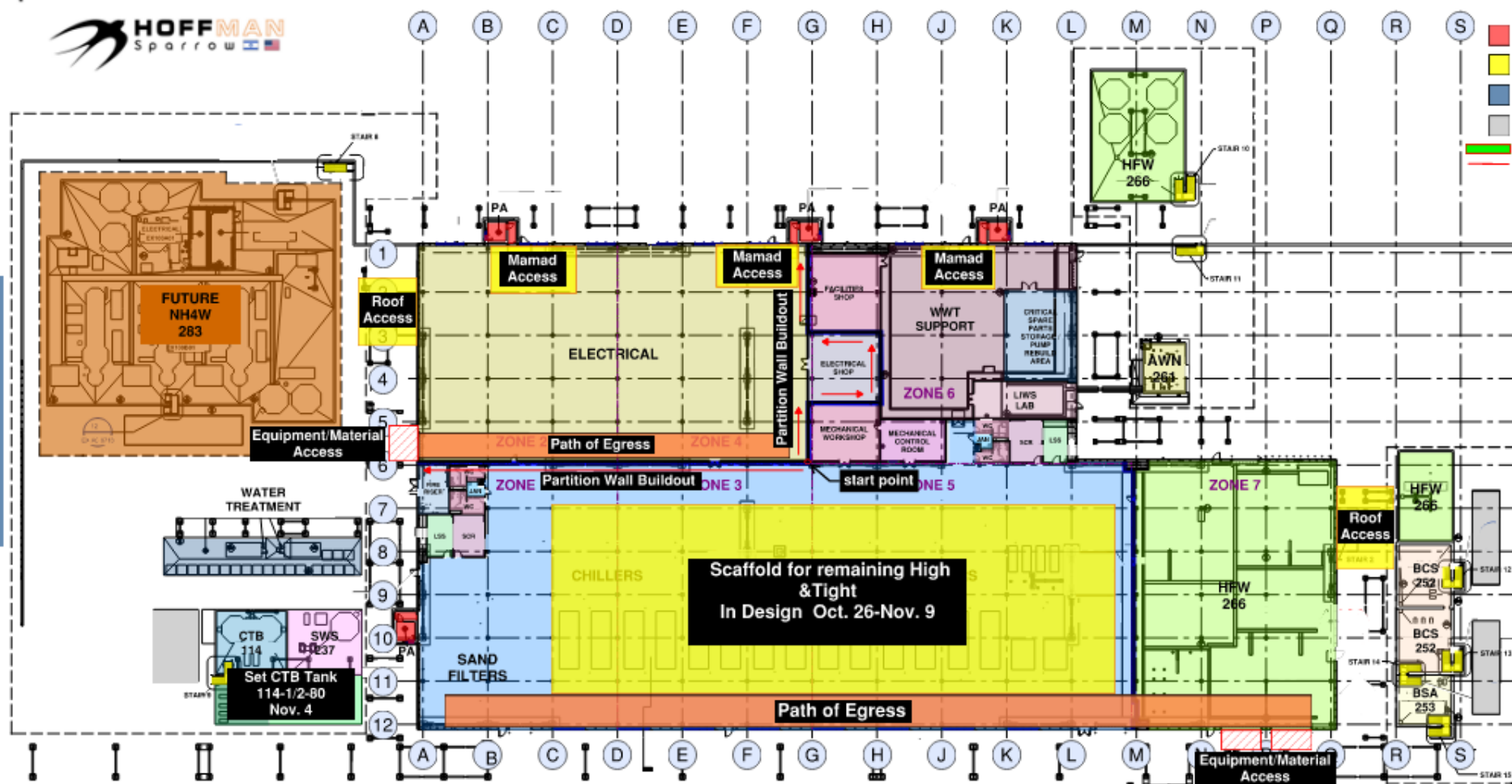




CUB 2

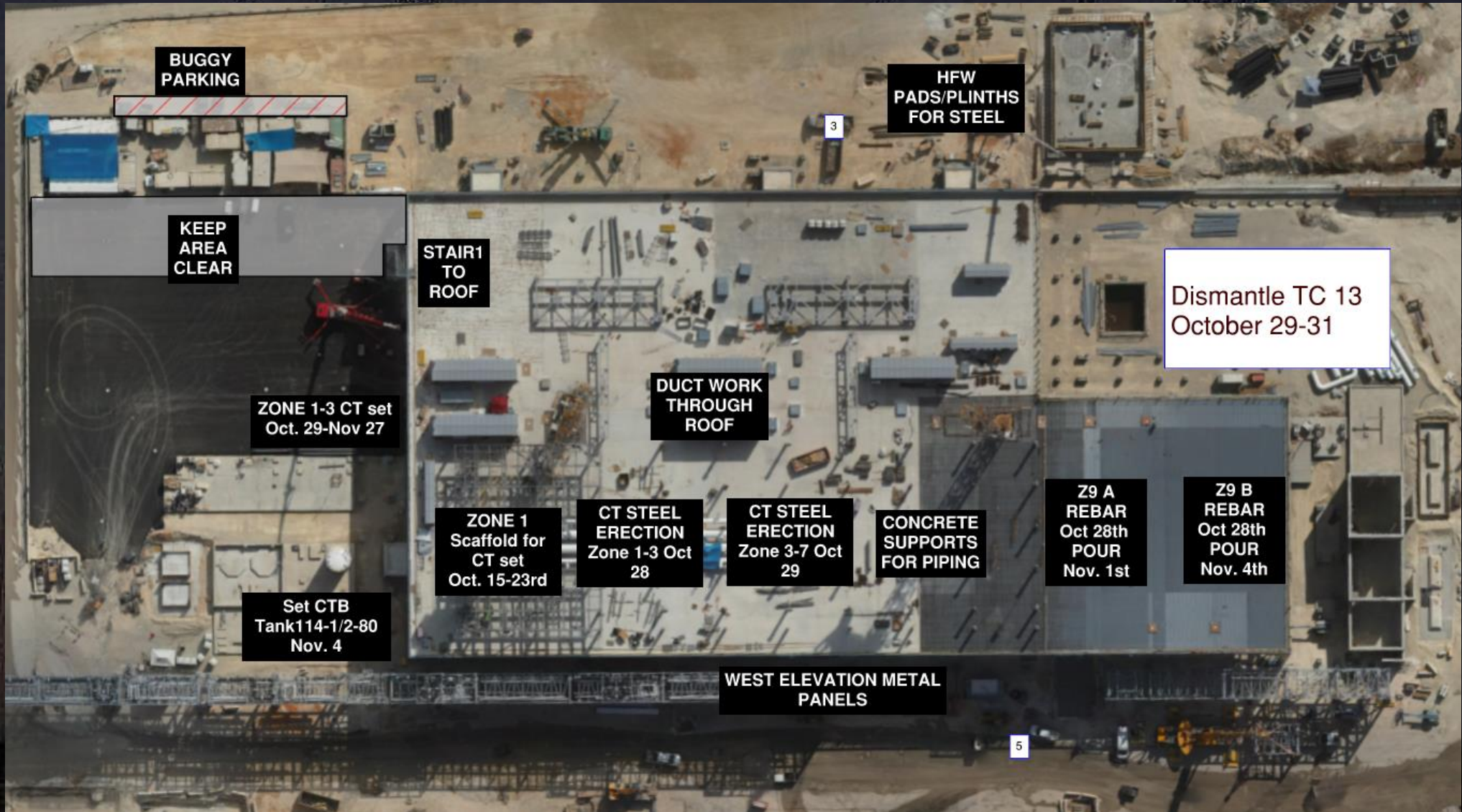
CUB 2 COORDINATION MAP

NORTH YARD

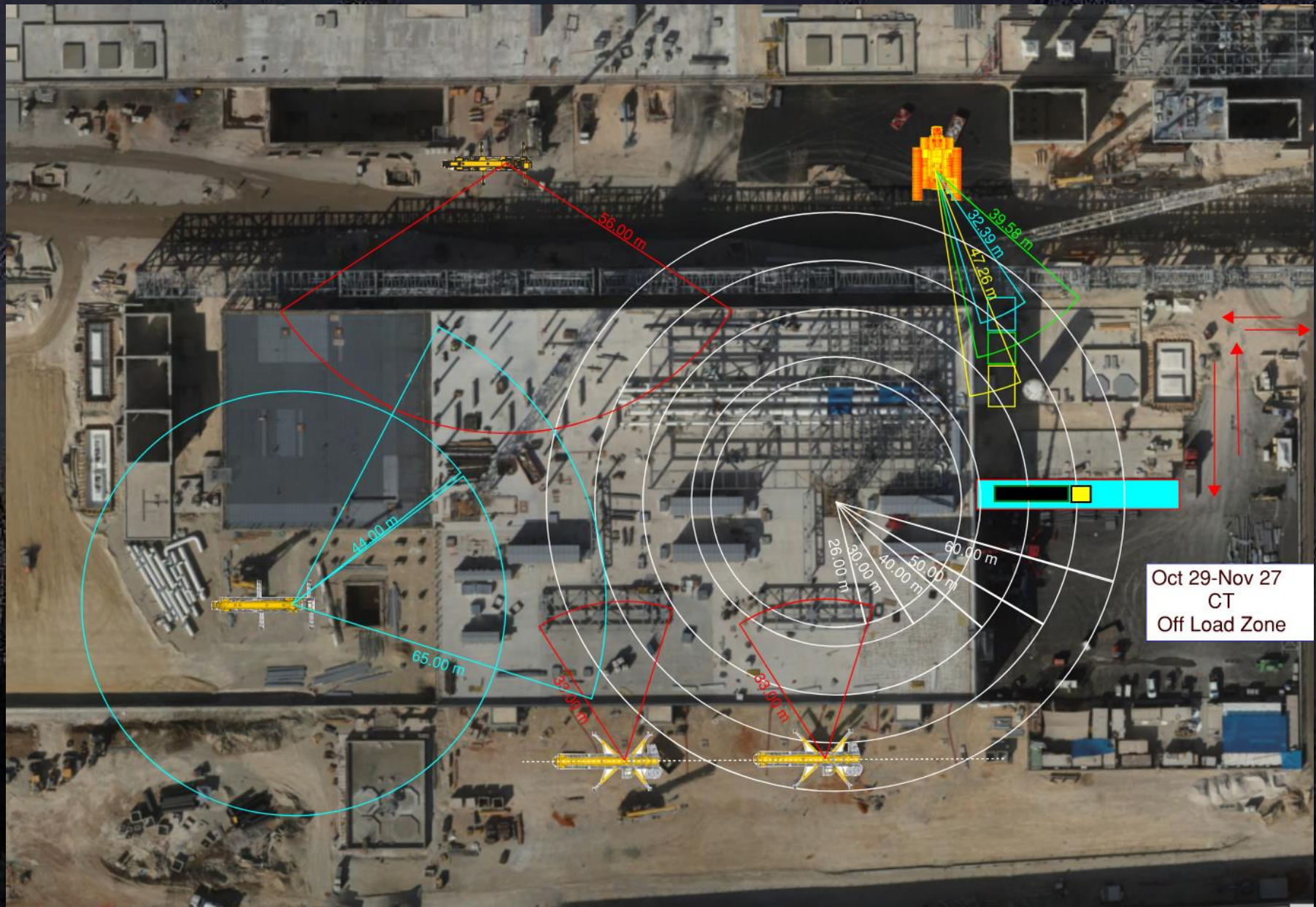




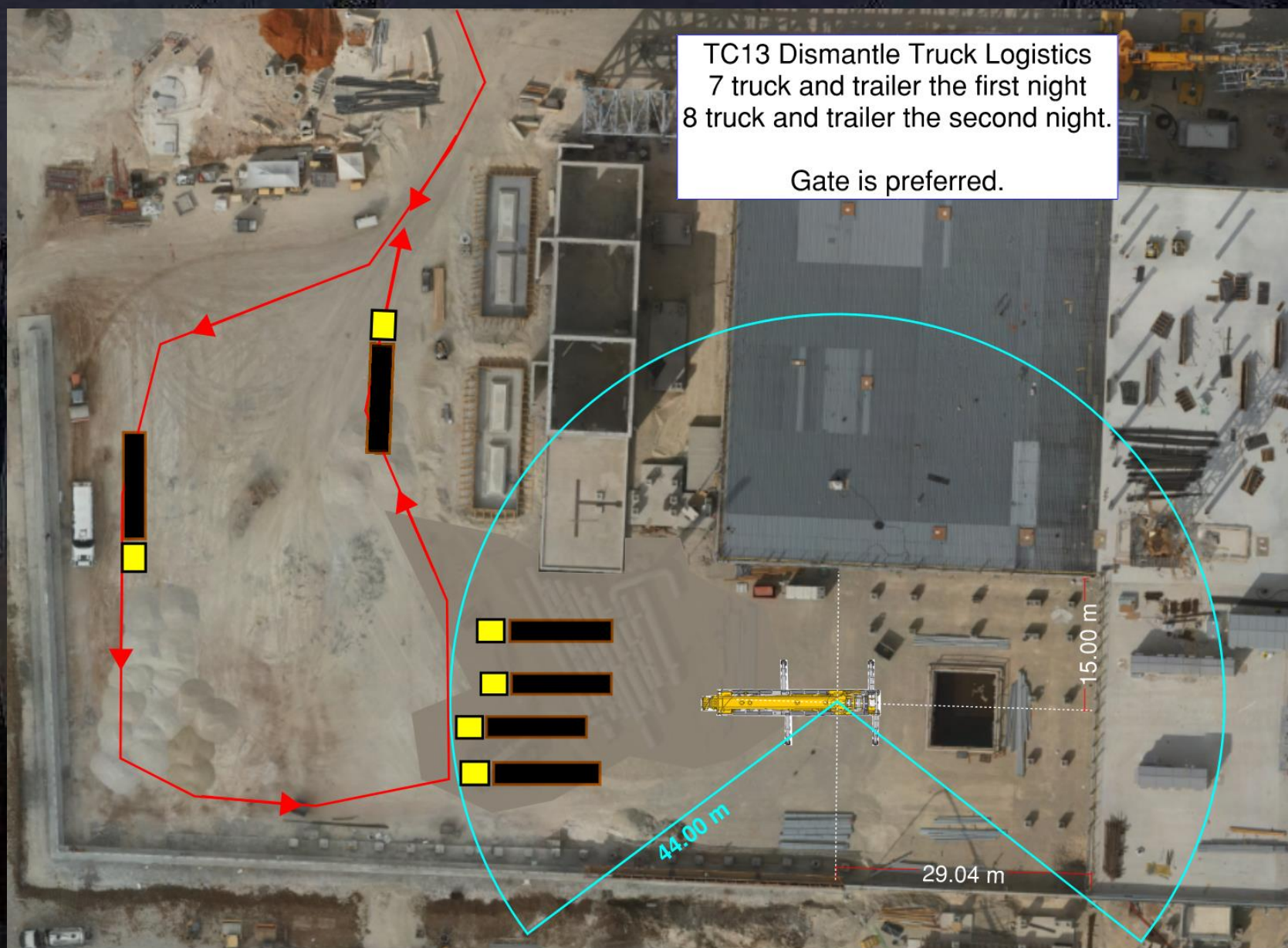
CUB 2 – EXTERIOR/ROOF



CUB 2 – Crane Logistics



CUB 2 – Crane Logistics





T18

CUB 2 - NOV 3th - NOV 11rh

nov 7th

nov 6th

nov 5th

nov 3th

nov 10th

nov 11th



5 m



Daily Coordination Meeting

Site Logistics

North



Daily Coordination Meeting

Site Logistics

South





DATE/TIME OF INCIDENT: 10/09/2024,
10:45am

LOCATION Utility AU/19
:

WHAT HAPPENED?

A cable lug was left/placed on the bussing and shorted to ground when the transformer was being energized, thereby causing an arc flash incident.

ROOT CAUSE

Procedures / Procedure Did Not Identify Error

WHAT CAN THE PROJECT LEARN FROM THIS INCIDENT?

Contractor needs to take the time to go through the entire piece of gear to look for any foreign object that may have been left inside the transformer. Inspection teams have been created to audit this equipment prior to start up.

WHAT CORRECTIVE ACTIONS ARE BEING TAKEN?

- Team of 4 will inspect IPC transformers prior to startups and follow the inspection checklist.
- Cameras are being used to inspect smaller areas that are blocked off or are hard to view.
- Inspections and startups will be back-to-back to avoid potential tampering of the gear.
- “Swiffers” will be used to clean smaller areas for dust and debris.
- A transformer that is not connected to a power source, will be used to train the inspection teams in proper inspection methods and documentation.
- An IPC Transformer Inspection Checklist has been developed to guide the inspection teams through a thorough pre-startup audit of the equipment.





LEARN FROM EVERYTHING

PROJECT EAGLE
2024



ALL INJURIES ARE PREVENTABLE | PEOPLE ARE THE SOLUTION | SUCCESS IS THE PRESENCE OF SAFETY

DATE/TIME OF INCIDENT: 10/21/2024 at 10:30 AM

LOCATION: Fab 52.1 North Tool Tower Level
2

WHAT HAPPENED?

Test crew was conducting an 8hr 170 psi pressure test on a 3" UN2 PressLok Line. The crew initially pressurized the line to 20 psi and closed the valve to verify the line was holding pressure. As they continually added 20 psi, the UN2 line held through 60 psi. When the crew went to add another 20 psi, they opened the valve. Approximately 60 seconds later the 3" UN2 line blew apart at the 90 that had been pressed.

ROOT CAUSE

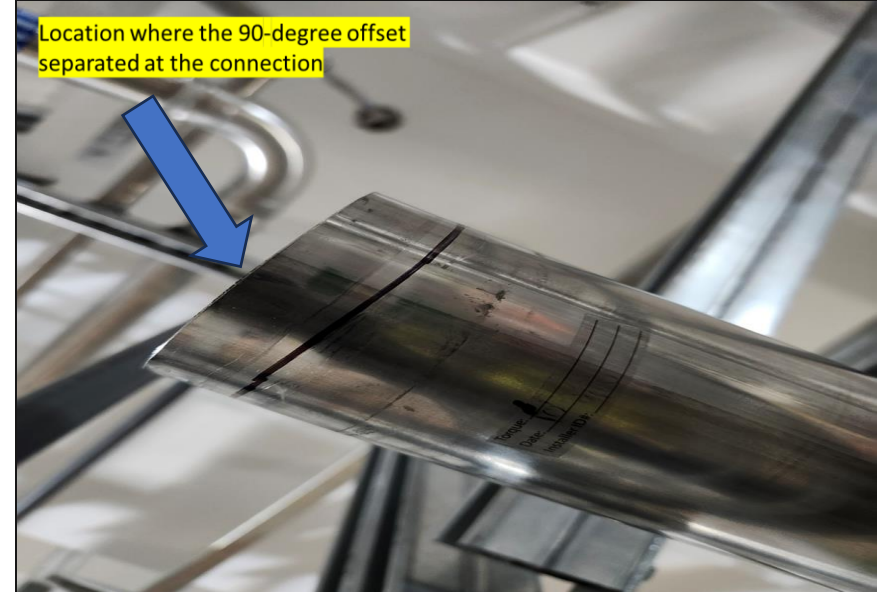
Management / Oversight Inadequate

WHAT CAN THE PROJECT LEARN FROM THIS INCIDENT?

Journeymen teaching apprentices need to have knowledge in the task at hand. When it is noticed that tools/material are missing to complete a job, the crew needs to STOP work and escalate to their Foreman.

WHAT CORRECTIVE ACTIONS ARE BEING TAKEN?

- Always verify employees are trained in the task they are required to oversee/complete.
- Follow new "Pre-task Plan PressLok Insert Guide" to include using insertion gauge.
- STOP work if the proper tools/equipment are not readily available and escalate concerns to Foreman.



Daily Coordination Meeting



14:00 Sign In