

Daily Coordination Meeting



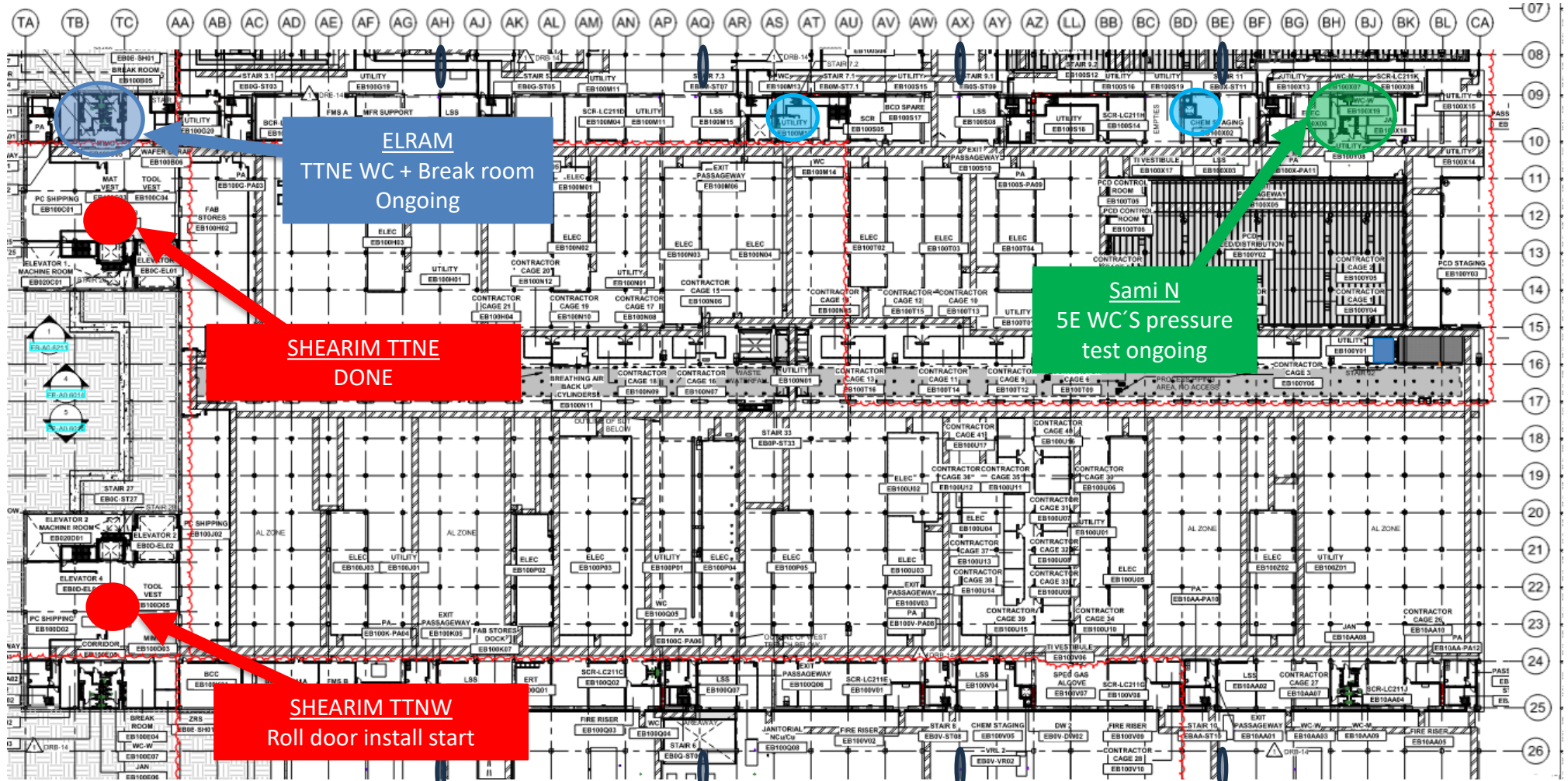
Daily Coordination Meeting

General Topics:

- Status update on companies allowed to work tomorrow
- Night shift work update.
- MEWP- need area supt approval to remain on jobsite.

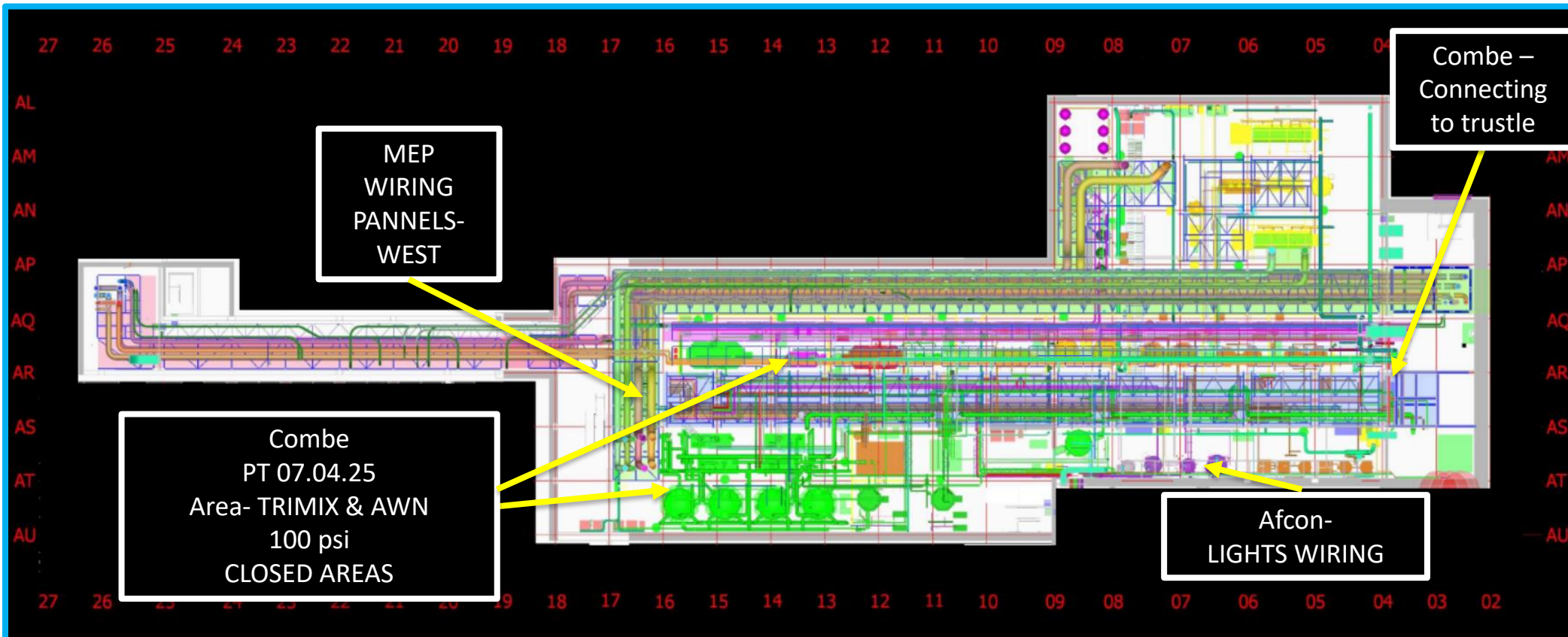


UTILITY LEVEL MOD1

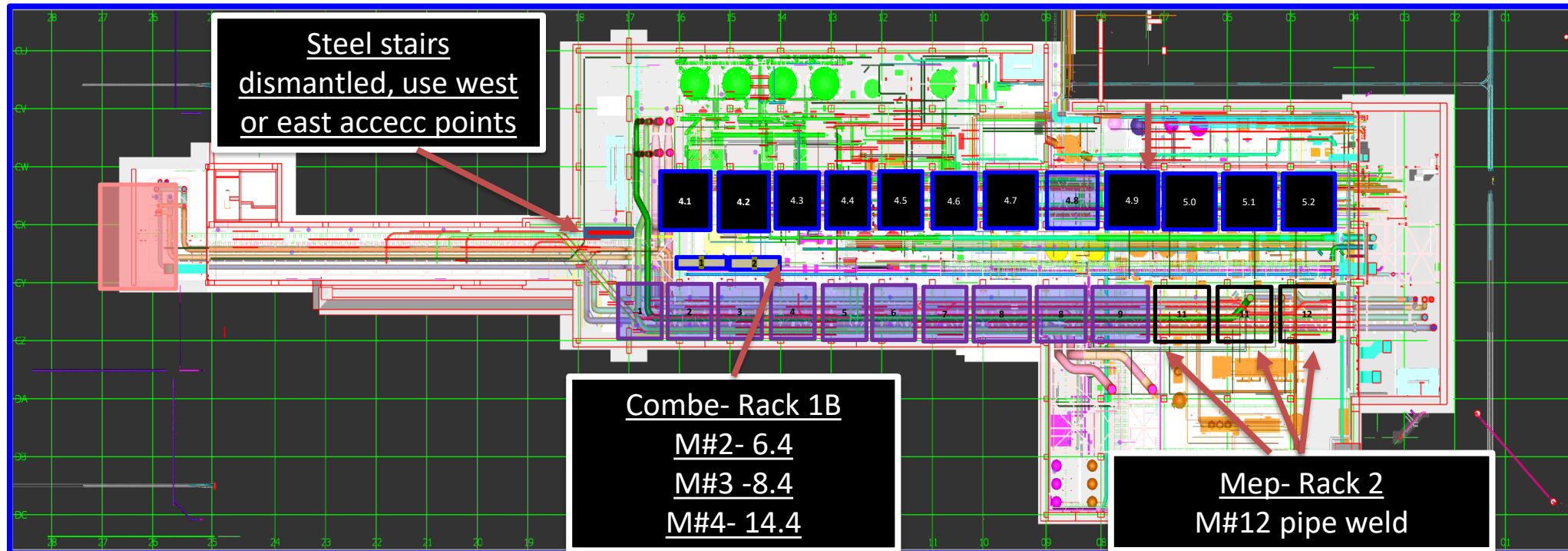




SUT 38.1 LEVEL

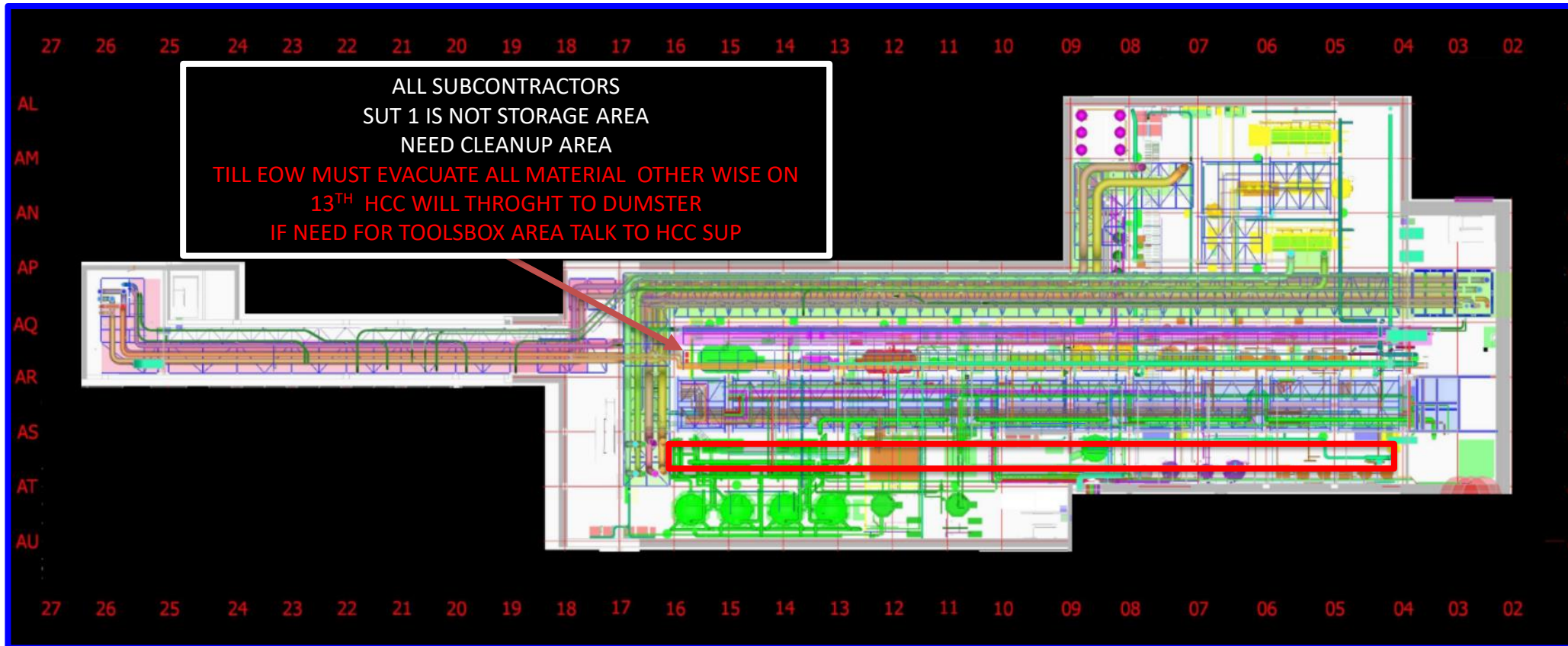


SUT 38.2 LEVEL





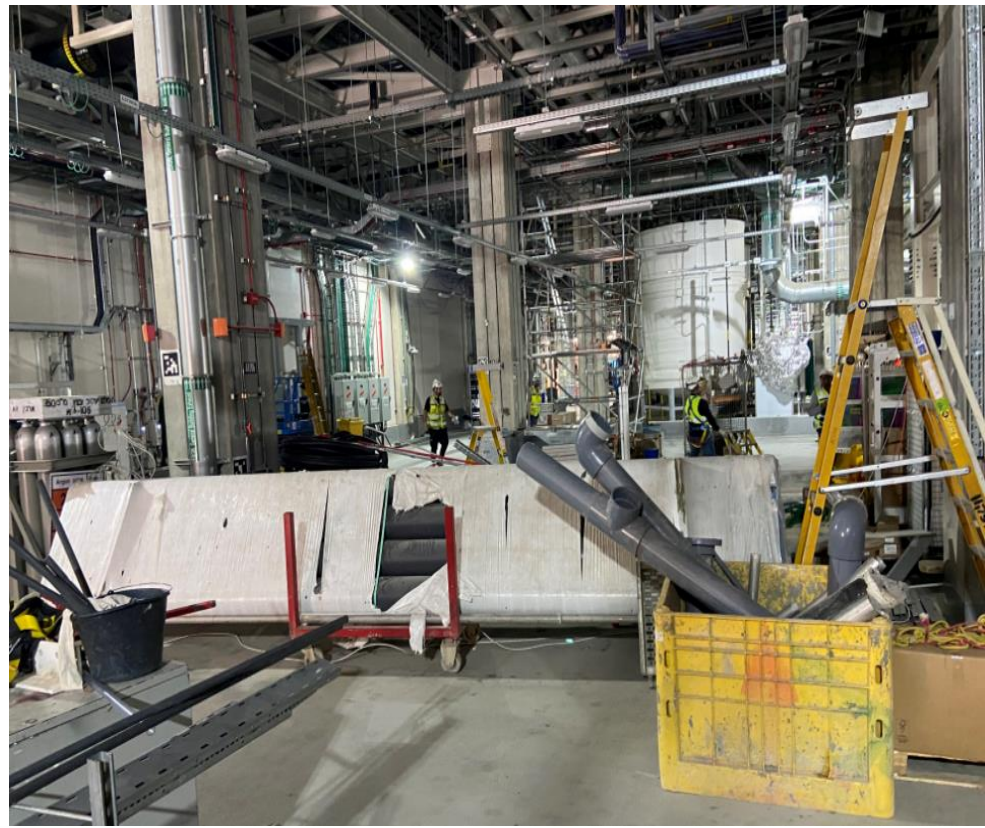
SUT 38.1 LEVEL













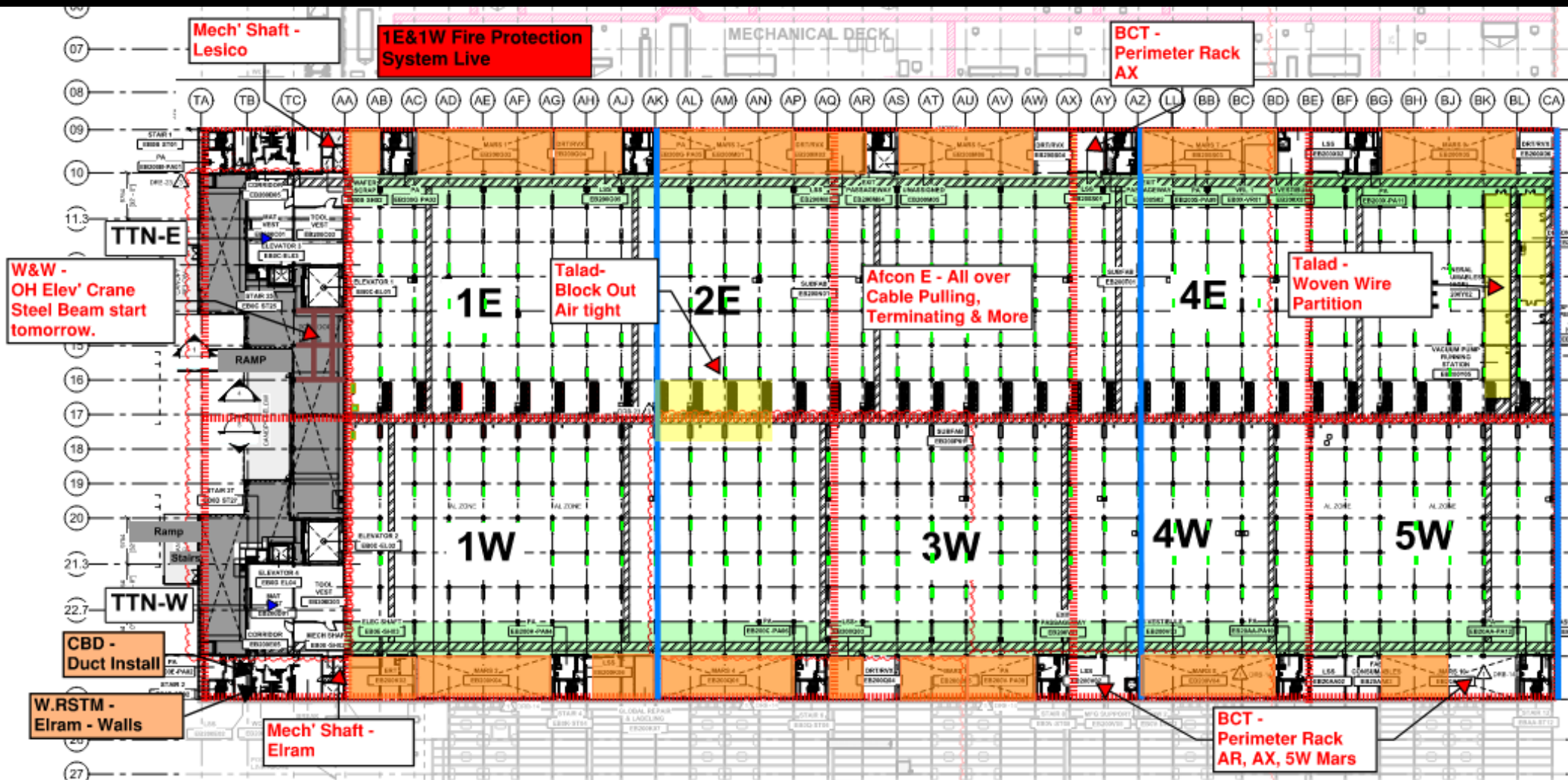
SUT 1 IS NOT STORAGE AREA

**NEED CLEANUP& EVACUATE ALL MATERIALS &
TOOLBOXES**

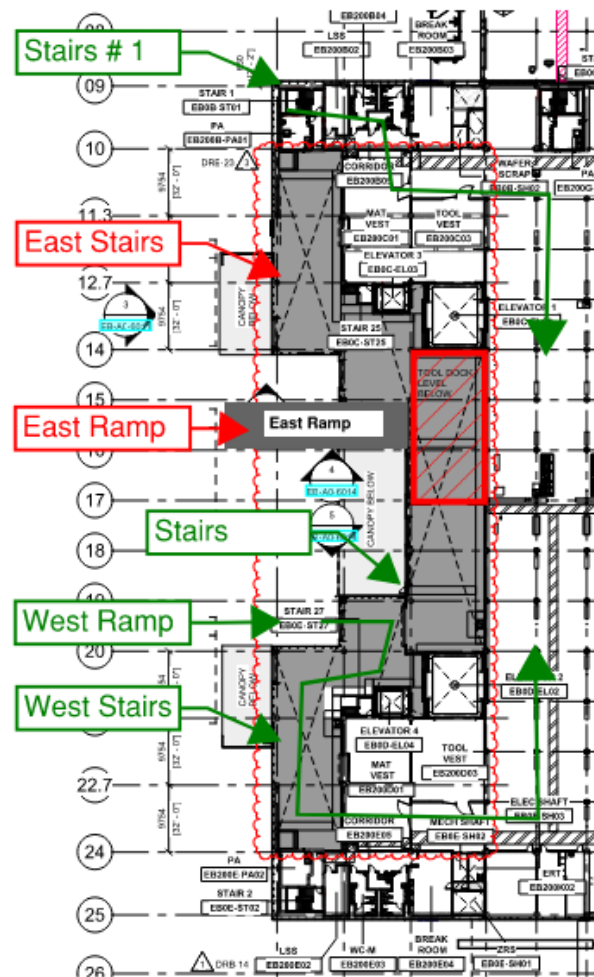
**TILL EOW 10TH MUST EVACUATE ALL MATERIALS,
OTHER WISE ON 13TH HCC WILL THROGHT
UNAPPROVED STUFF TO DUMSTER!!**

**EVERY TOOLBOX OR MATERIALS MUST BE
APPROVED - TALK TO HCC SUP- IBRAHIM**

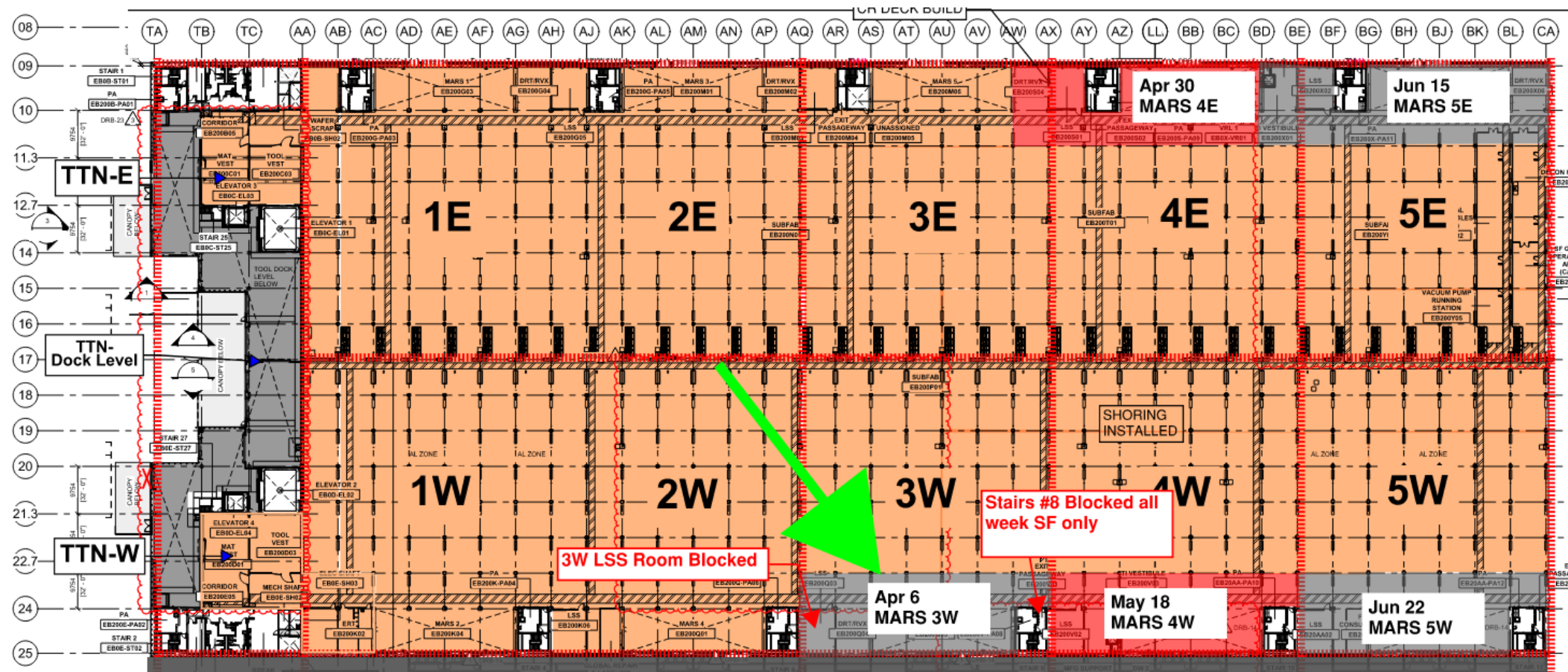
SUBFAB BUILDOUT MOD 1

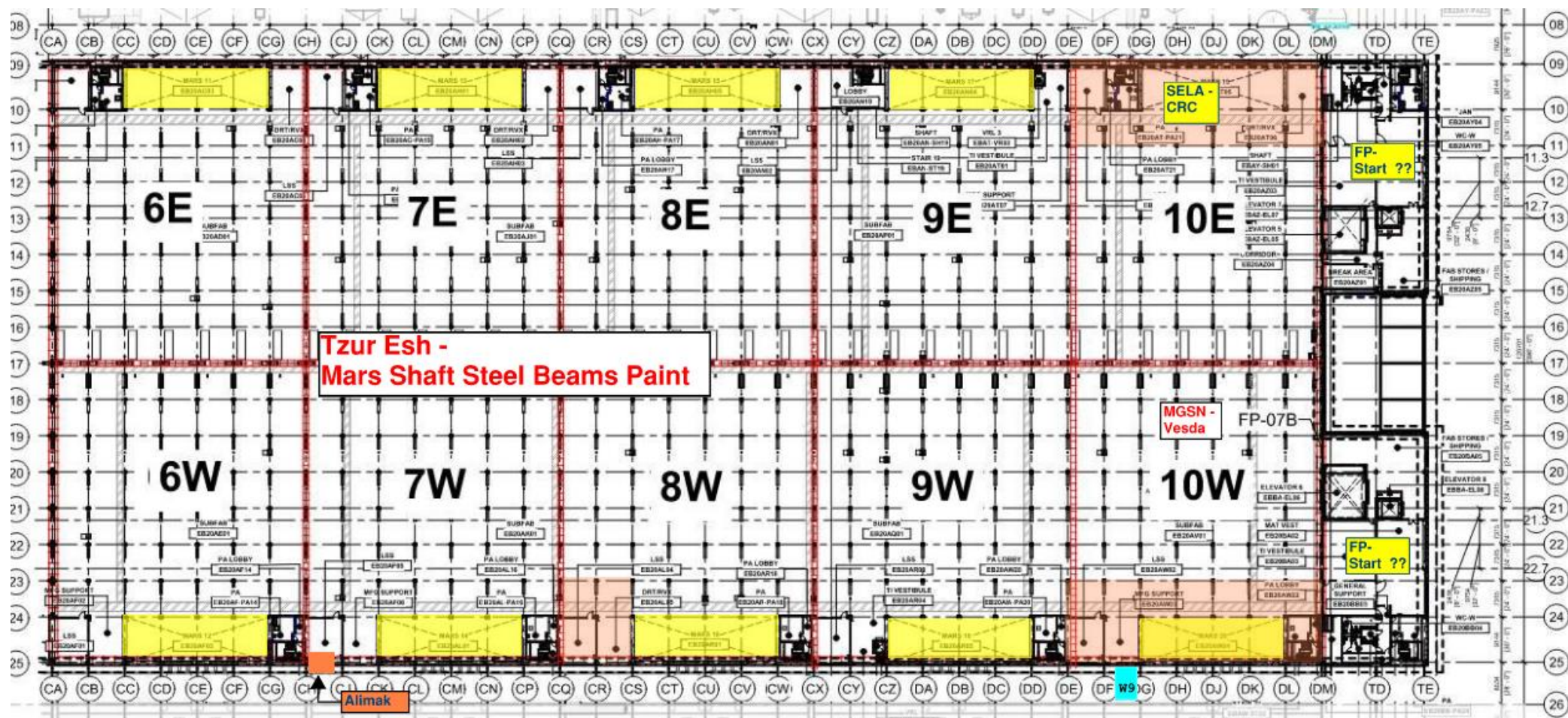


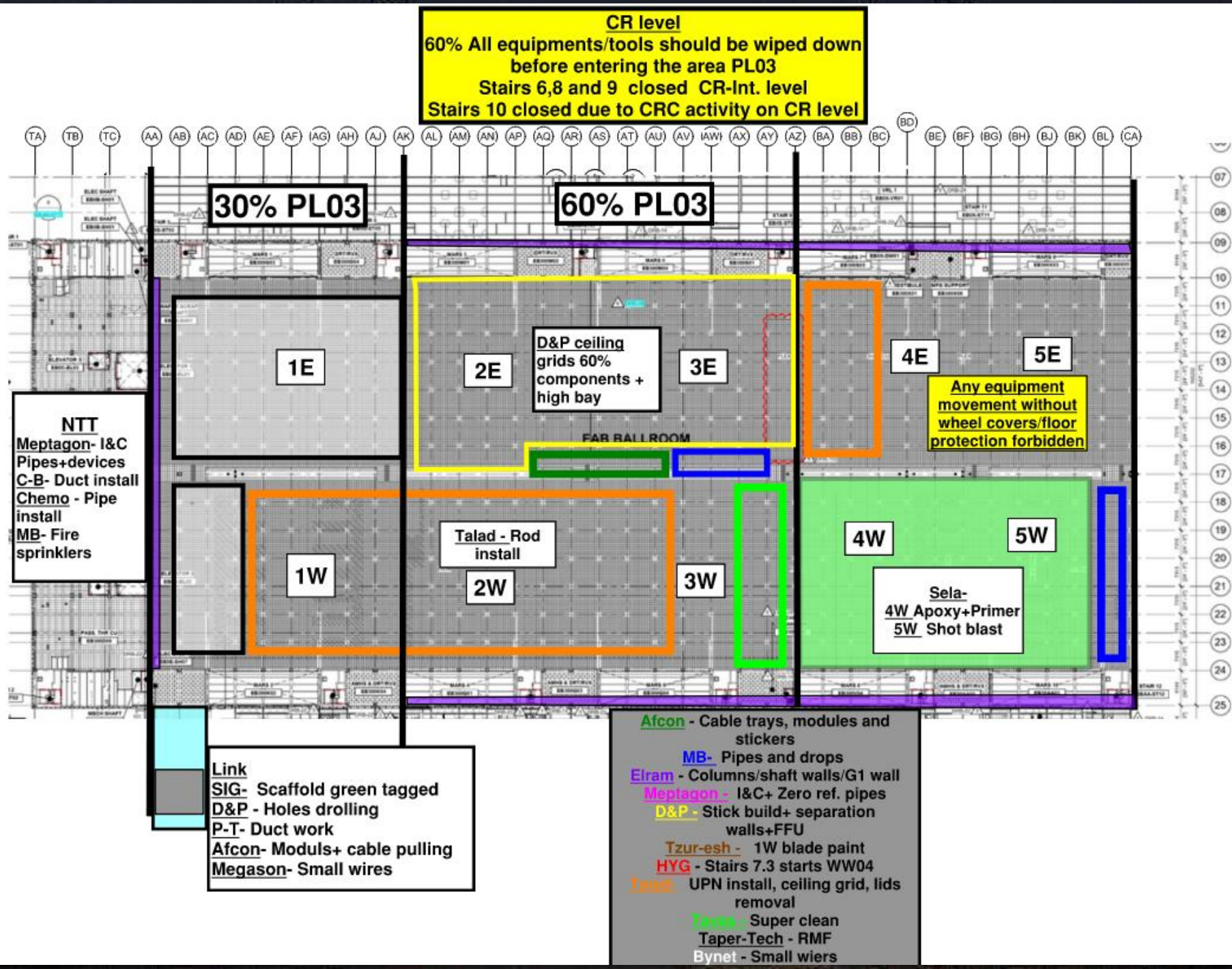
W&W Elev' Crane Beams

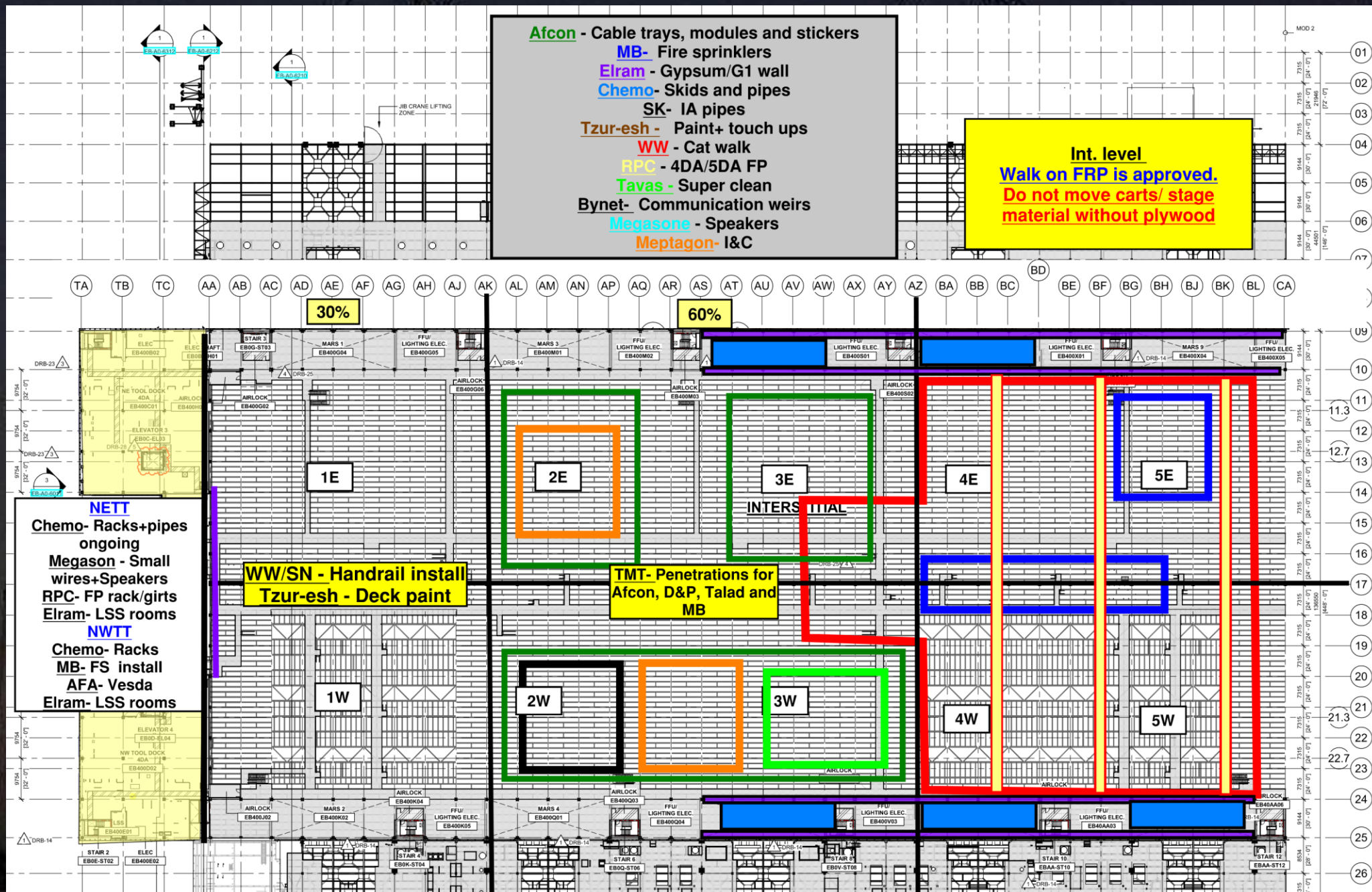


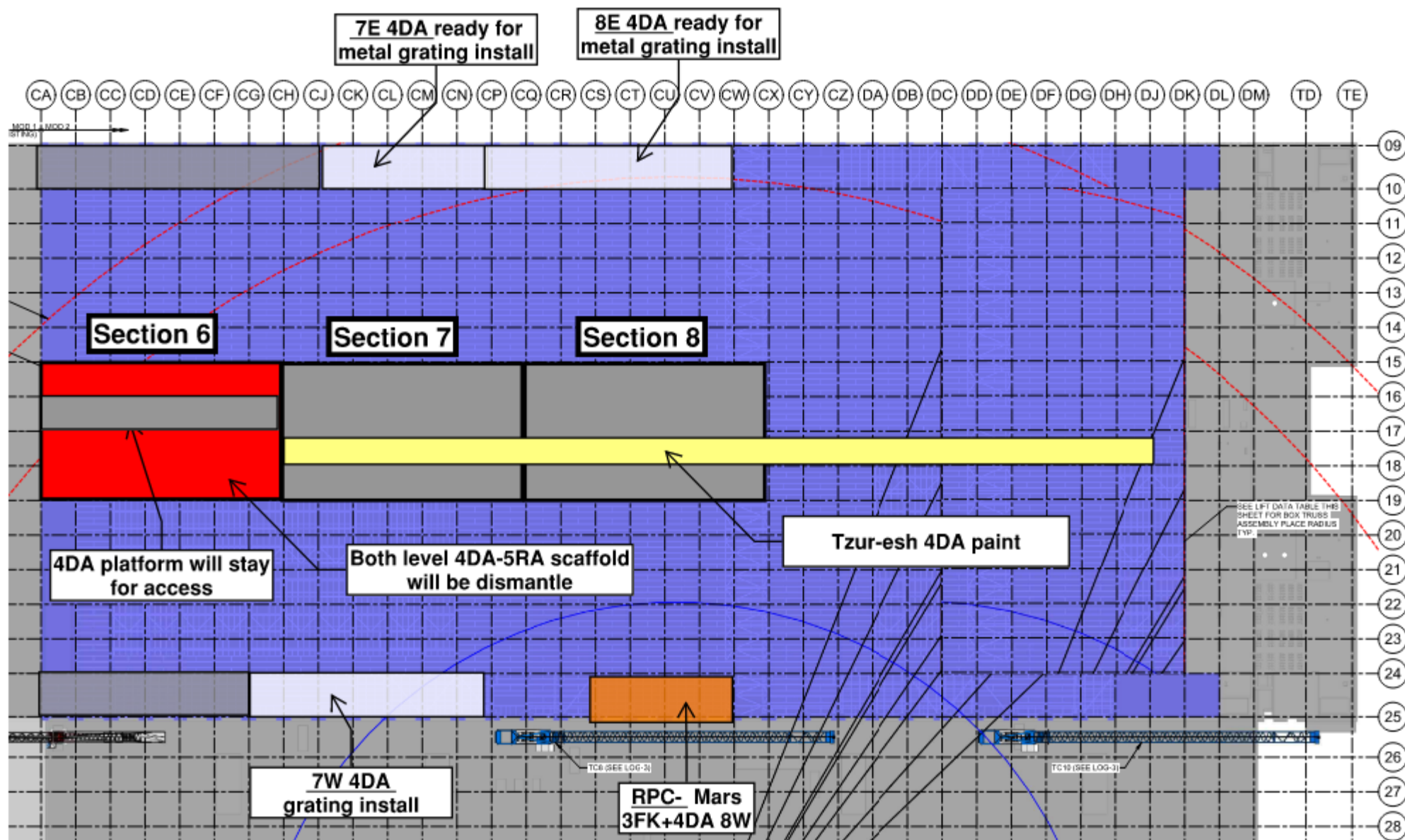
SUBFAB CRC TOPCOAT

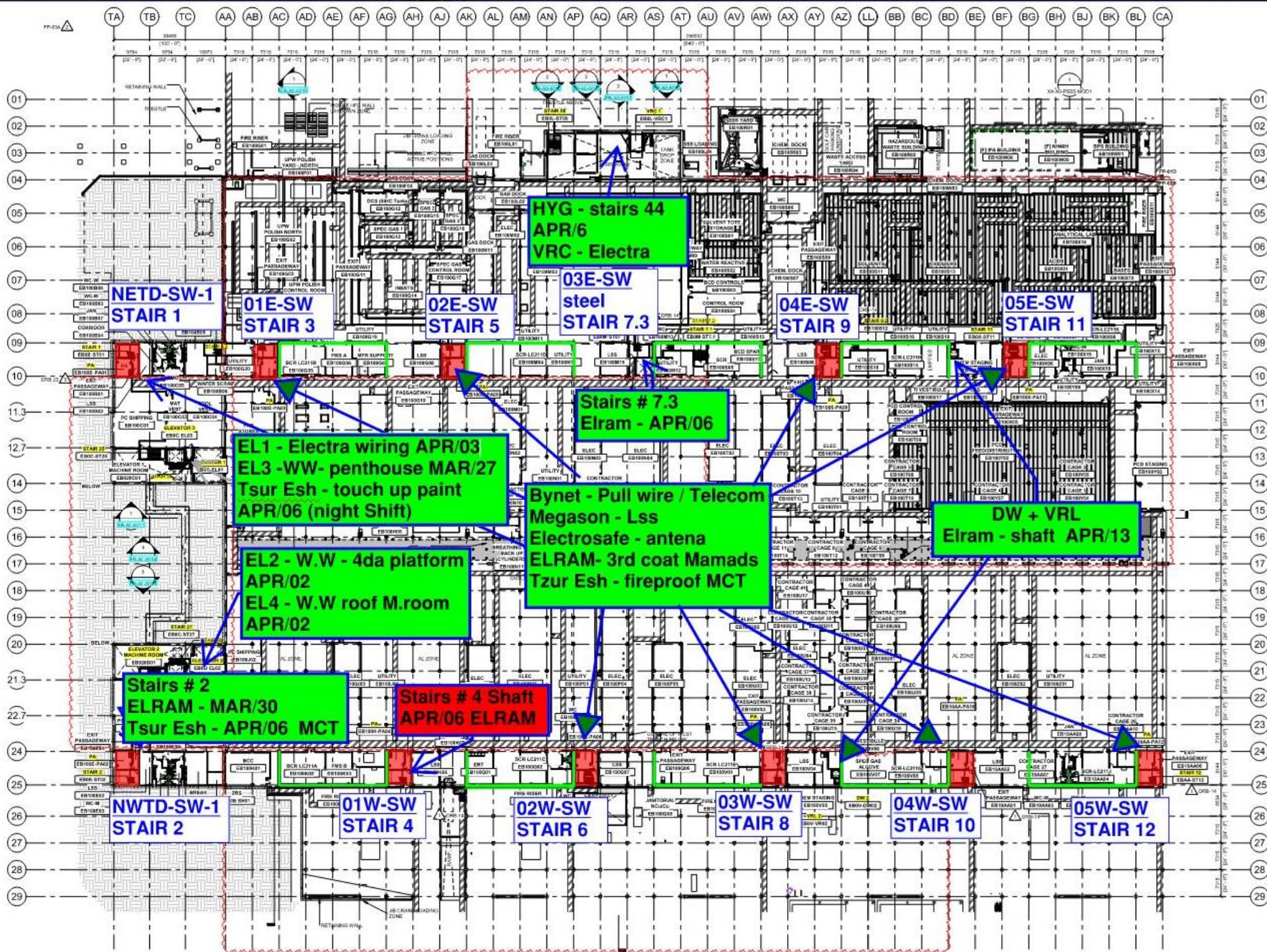


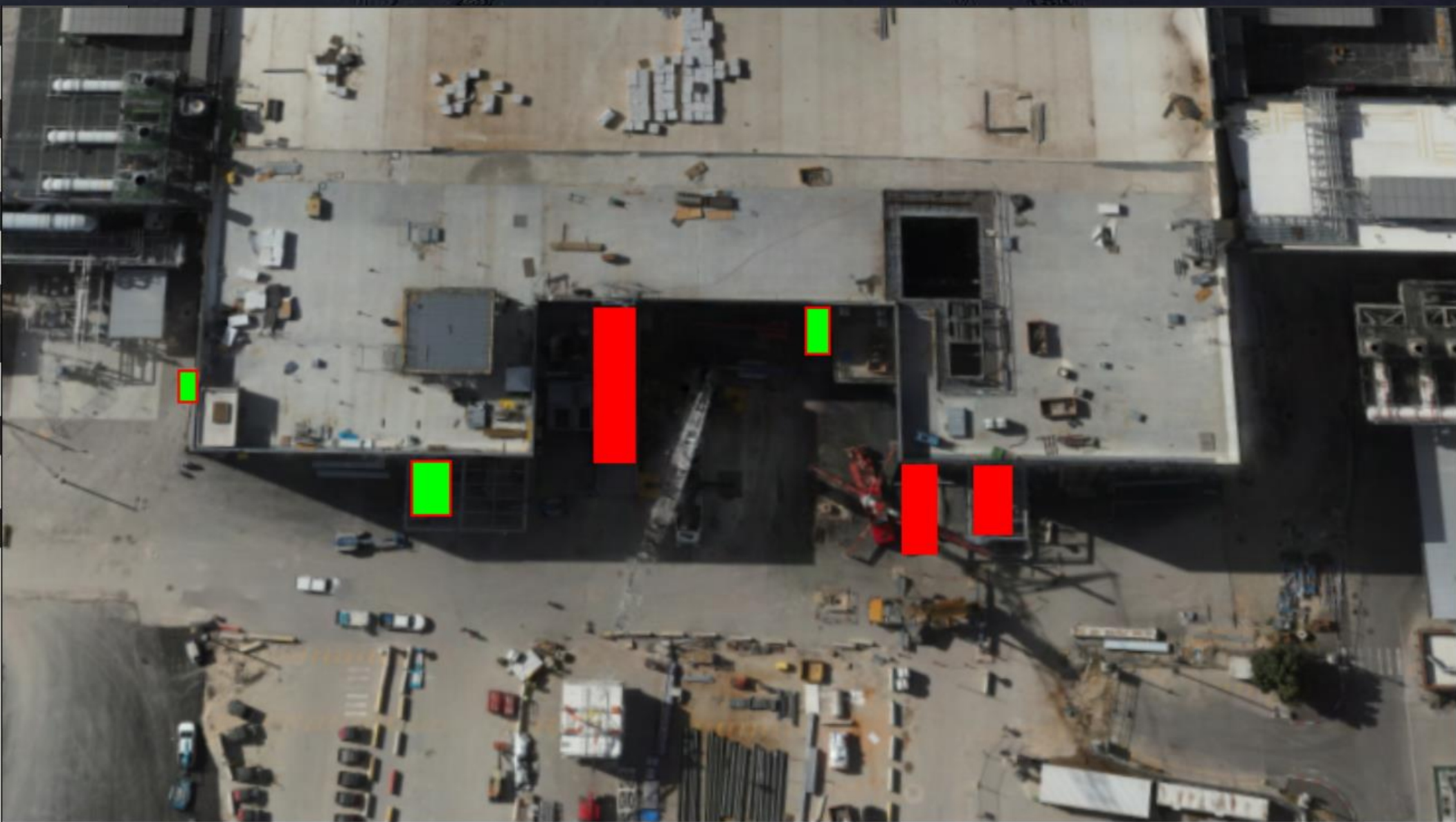


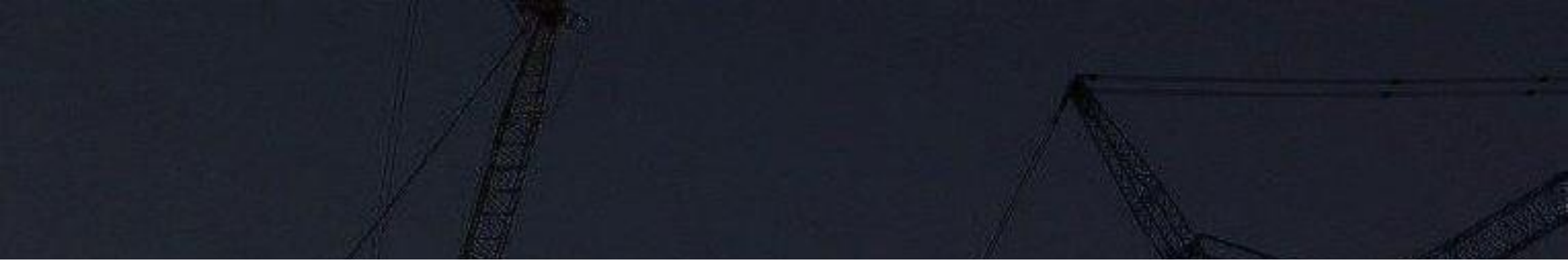






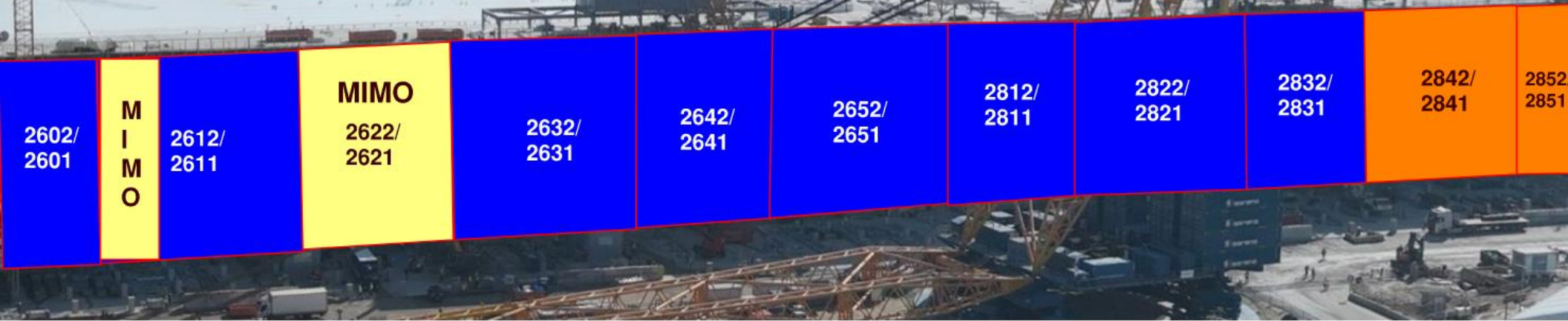






- READY FOR GIRTS
- INSTALLING GIRTS
- READY FOR PANELS
- PANELS INSTALLED

MOD 2 WESTSIDE GIRTS/SIDING



MOD 2 EASTSIDE GIRTS/SIDING



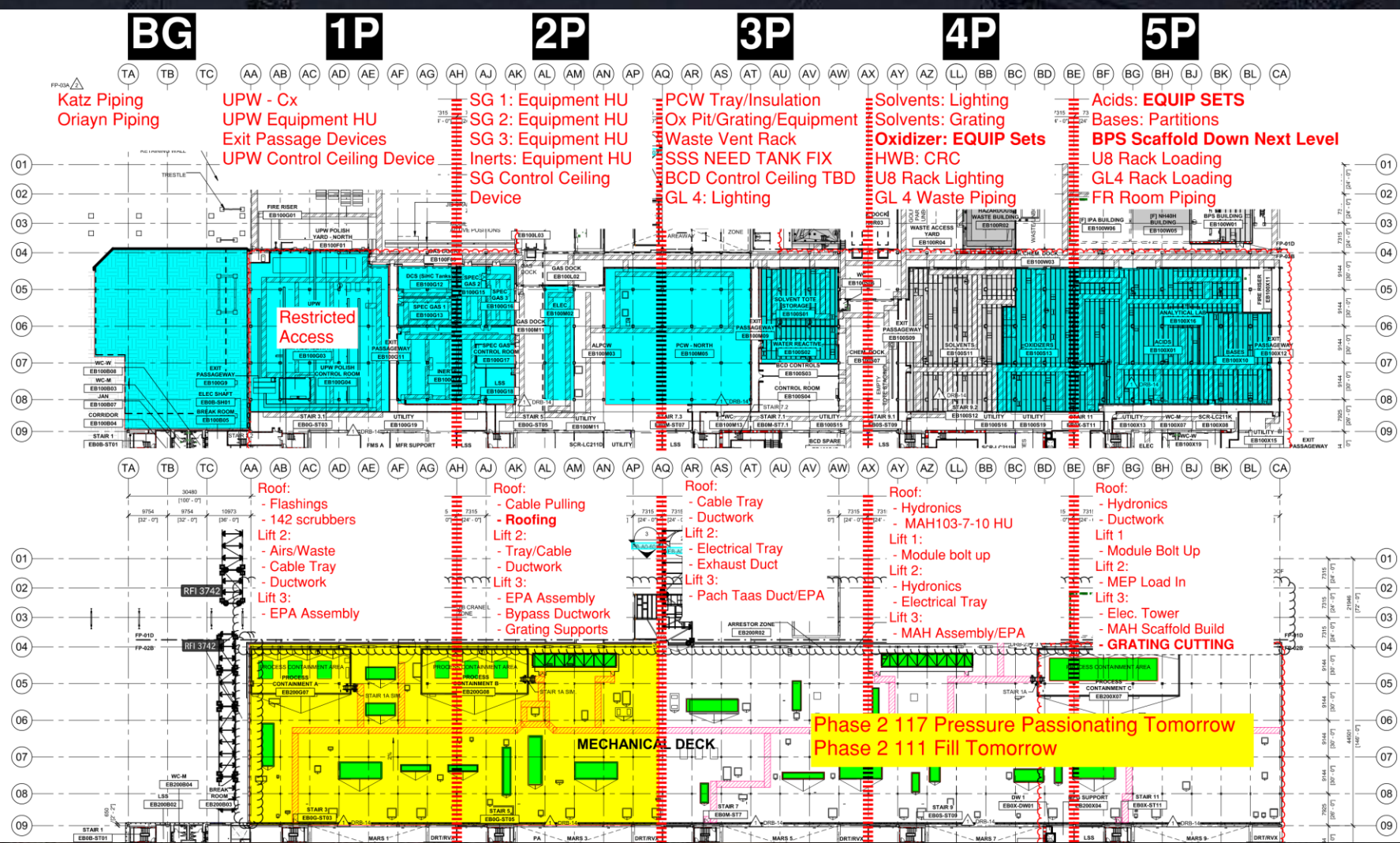
2752/ 2751	2742/ 2741	2732/ 2731	2722/ 2721	2712/ 2711	2552/ 2551	2542/ 2541	2532/ 2531	2522/ 2521	2512/ 2511	2502/ 2501
---------------	---------------	---------------	---------------	---------------	---------------	---------------	---------------	---------------	---------------	---------------

READY FOR GIRTS	
INSTALLING GIRTS	
READY FOR PANELS	
PANELS INSTALLED	

PSSS.1

Utility Level 1YA

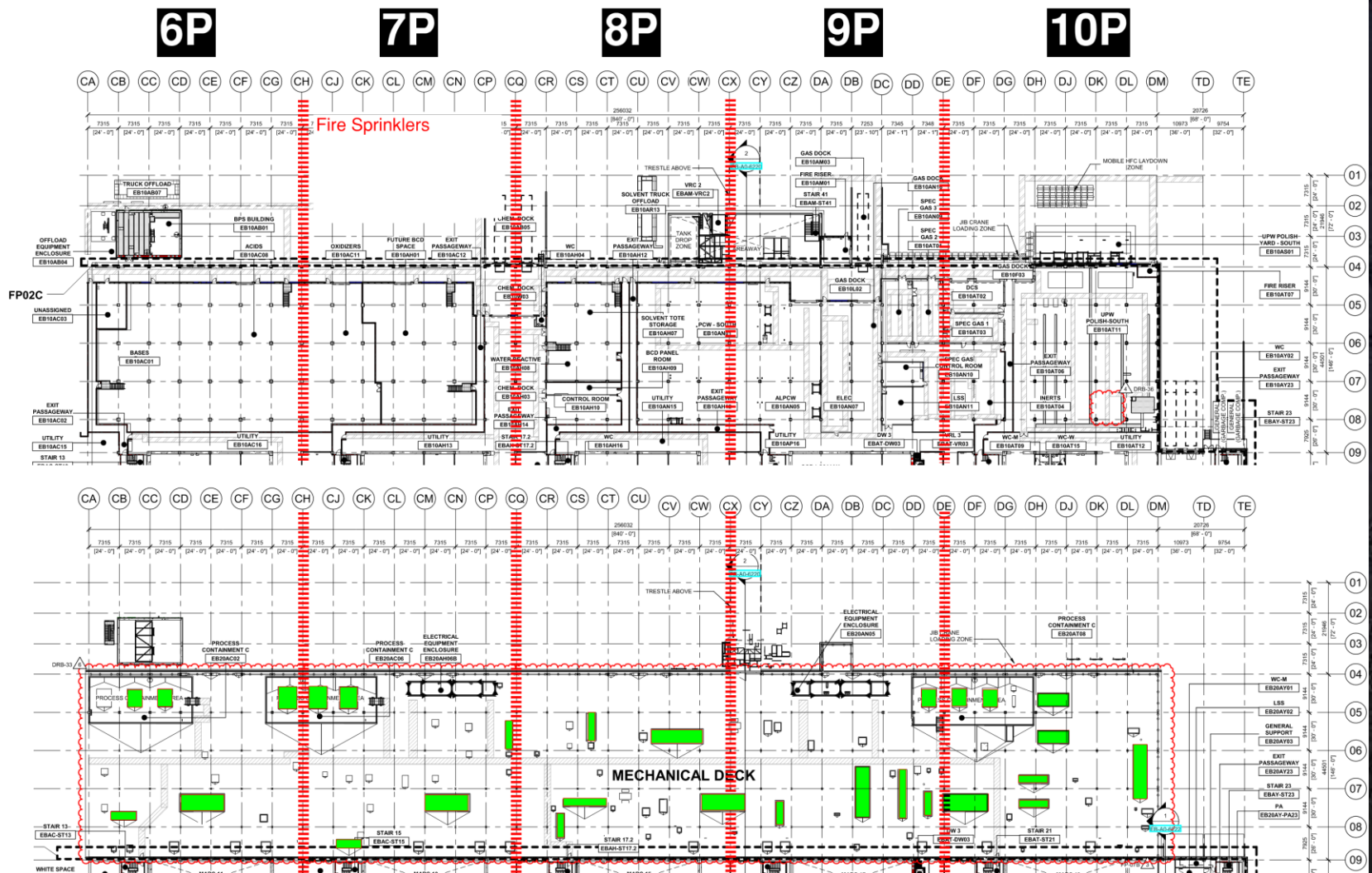
PSSS Roof 2SA



PSSS.2

Utility Level 1YA

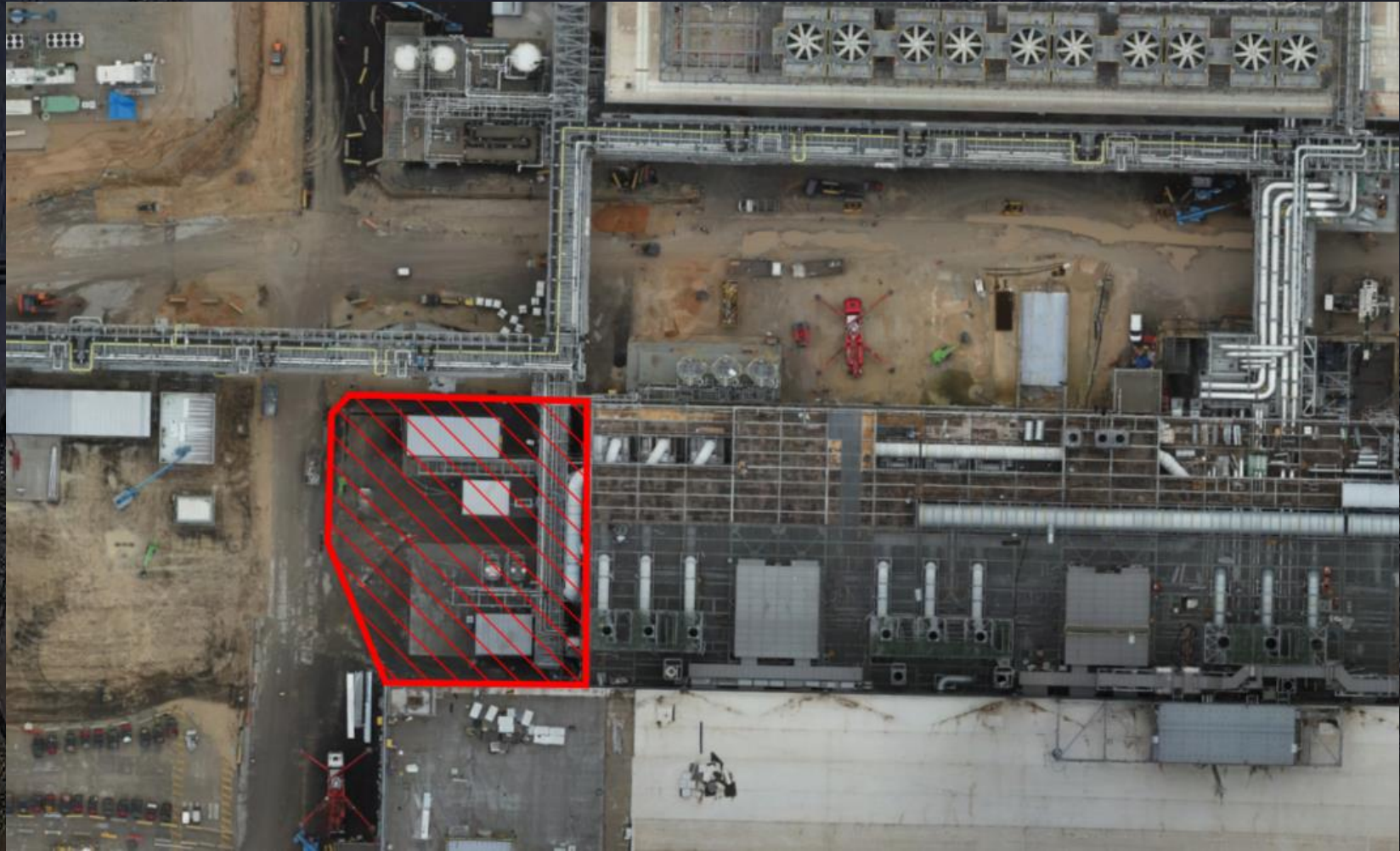
PSSS Roof 2SA



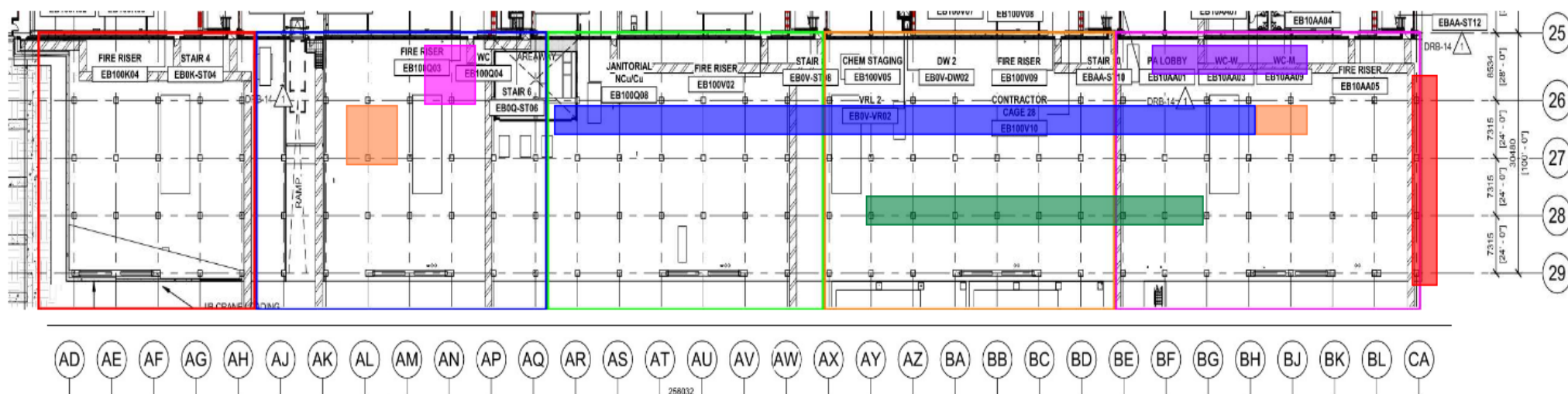
BGY GN2 Purging

14th- 17th
Intermittent
noise

18th-20th
continuous
noise
BGY Closed



<ul style="list-style-type: none"> * Pach Taas - completion of spools and linafters on UPN 138 * Pach Taas - working on connections of WP to modules 	<ul style="list-style-type: none"> * Chemo - performing passivation on UPN 111 (UL + lift 2) 	<ul style="list-style-type: none"> * Afcon - Installation of lighting and cable pulling 	<ul style="list-style-type: none"> * ASD - erection of scaffold for VFD drains * W&W - welding connections on CA line for MOD2 steel * CB - working on small AH ducts.
------------------------------------------------------------------------------------------------------------------------------------------------------------------------------	-------------------------------------------------------------------------------------------------------------	--------------------------------------------------------------------------------------------------------	-------------------------------------------------------------------------------------------------------------------------------------------------------------------------------------------------------------

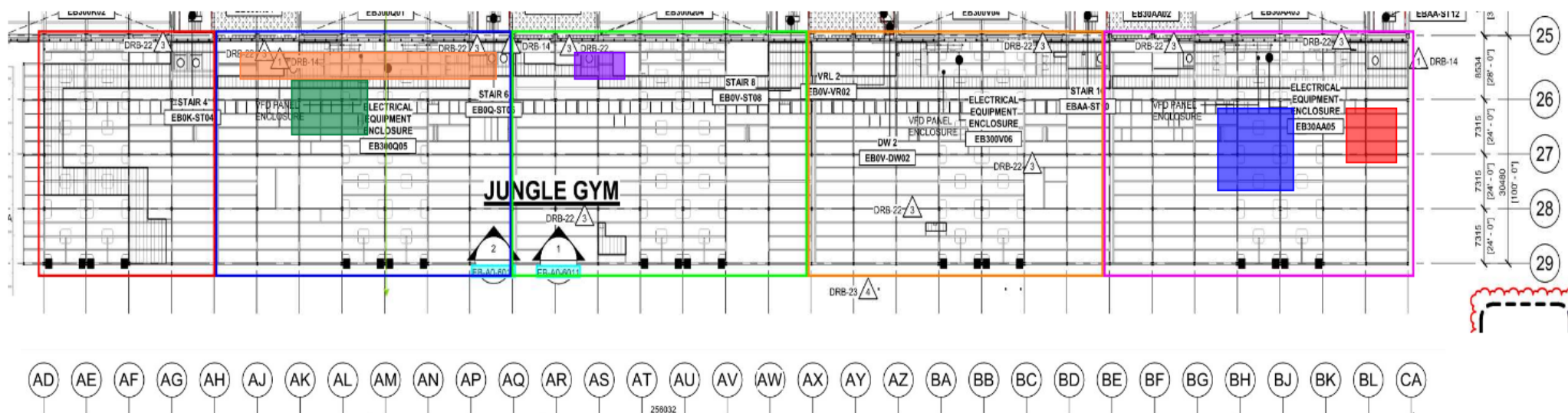


WJG – Lift 2

* Chemo - about to start restoration of UPN 113 once water test results are good
* Carmel Bidud - installing handrails to open planking for stiffeners

* Afcon - installation of trays to exhaust fans

* Chemo - continuing insulation
* SK - performing connections to MAH (later this week, scaffold will be turned to yellow tag)



			* Chemo - hoisting and installing 4J MARS pipes	* SN - handrai installation and penetrations
--	--	--	-------------------------------------------------	----------------------------------------------

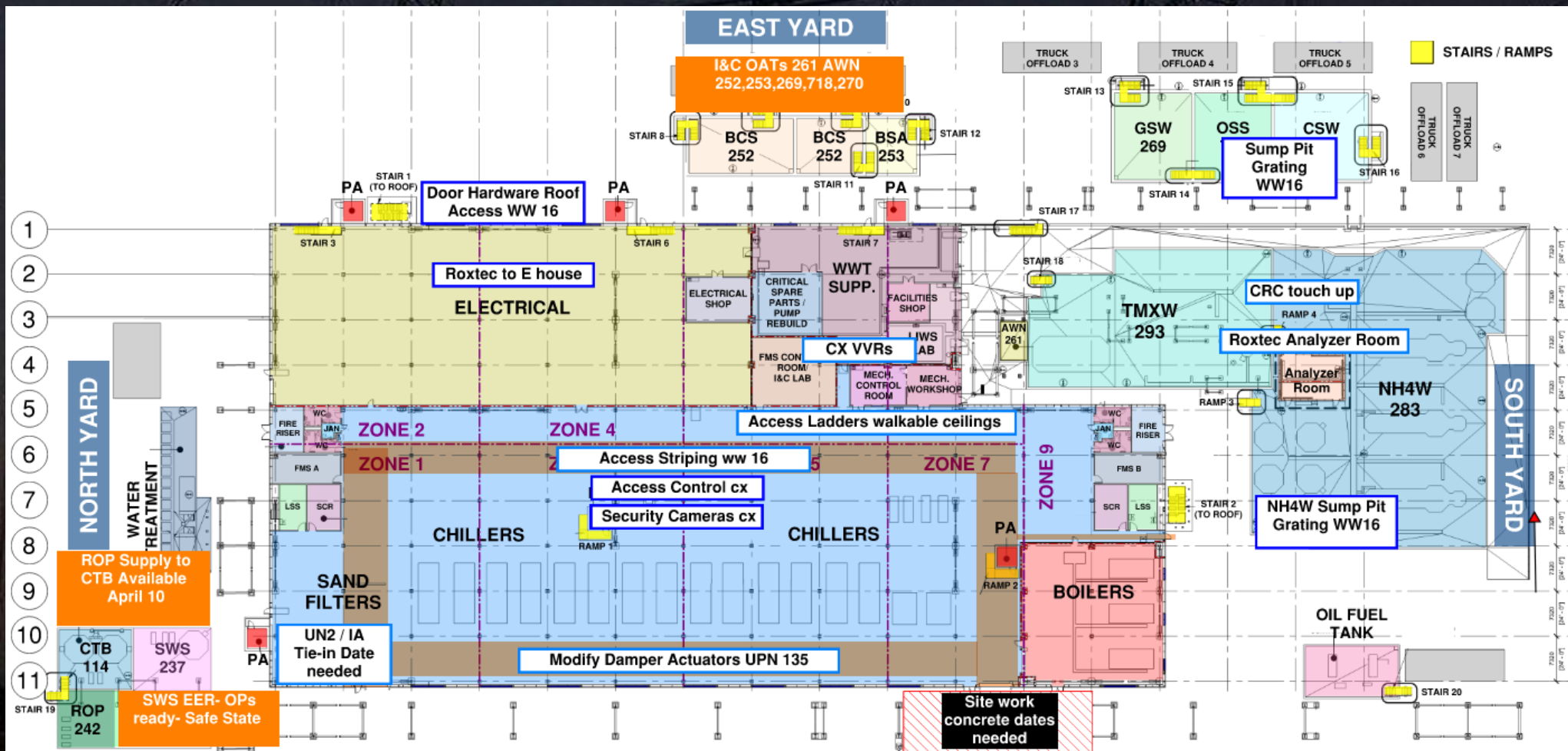


Crane logistics

Crane: 750 ton crane
moving south of RCTO
Tuesday 08/04/25



CUB 1 Ops Ready April 24



CUB 1 – EXTERIOR/ROOF





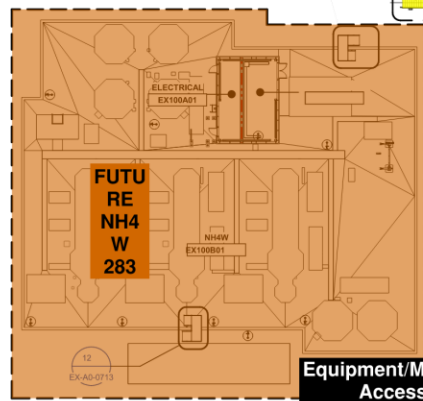
CUB 2- Load in & H&T



A B C D E F G H J K L M N P Q R S

**Plinth Install
WW13-15**

**GIS39 Install
WW16-17**



STAIR 8

1

2

3

4

5

6

7

8

9

10

11

12

13

14

15

16

17

18

19

20

21

22

23

24

25

26

27

28

29

30

31

32

33

34

35

36

37

38

39

40

41

42

43

44

45

46

47

48

49

50

51

52

53

54

55

56

57

58

59

60

61

62

63

64

65

66

67

68

69

70

71

72

73

74

75

76

77

78

79

80

81

82

83

84

85

86

87

88

89

90

91

92

93

94

95

96

97

98

99

100

101

102

103

104

105

106

107

108

109

110

111

112

113

114

115

116

117

118

119

120

121

122

123

124

125

126

127

128

129

130

131

132

133

134

135

136

137

138

139

140

141

142

143

144

145

146

147

148

149

150

151

152

153

154

155

156

157

158

159

160

161

162

163

164

165

166

167

168

169

170

171

172

173

174

175

176

177

178

179

180

181

182

183

184

185

186

187

188

189

190

191

192

193

194

195

196

197

198

199

200

201

202

203

204

205

206

207

208

209

210

211

212

213

214

215

216

217

218

219

220

221

222

223

224

225

226

227

228

229

230

231

232

233

234

235

236

237

238

239

240

241

242

243

244

245

246

247

248

249

250

251

252

253

254

255

256

257

258

259

260

261

262

263

264

265

266

267

268

269

270

271

272

273

274

275

276

277

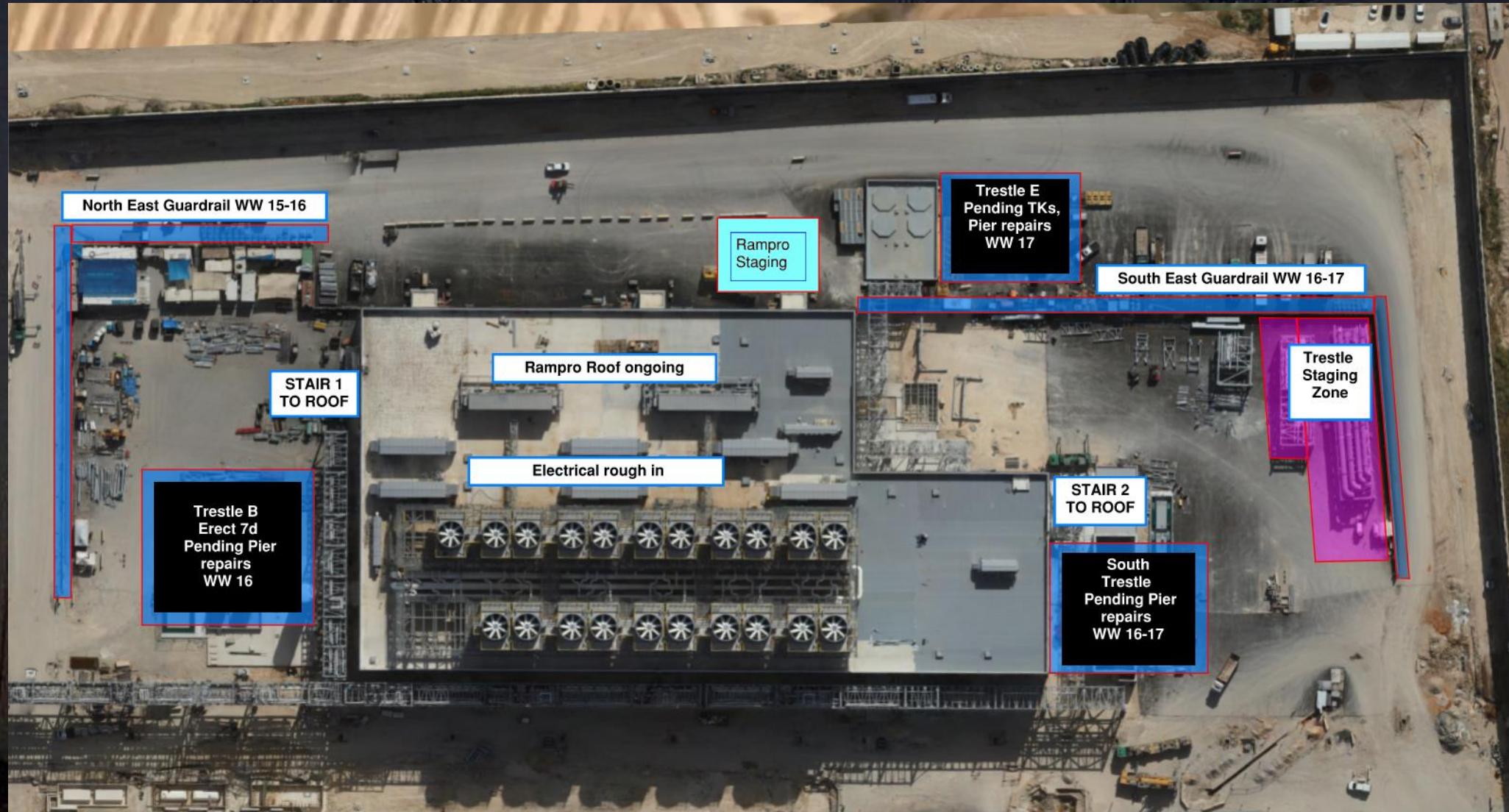
278

279

280

281

CUB 2- Trestles/Roof/Guardrails

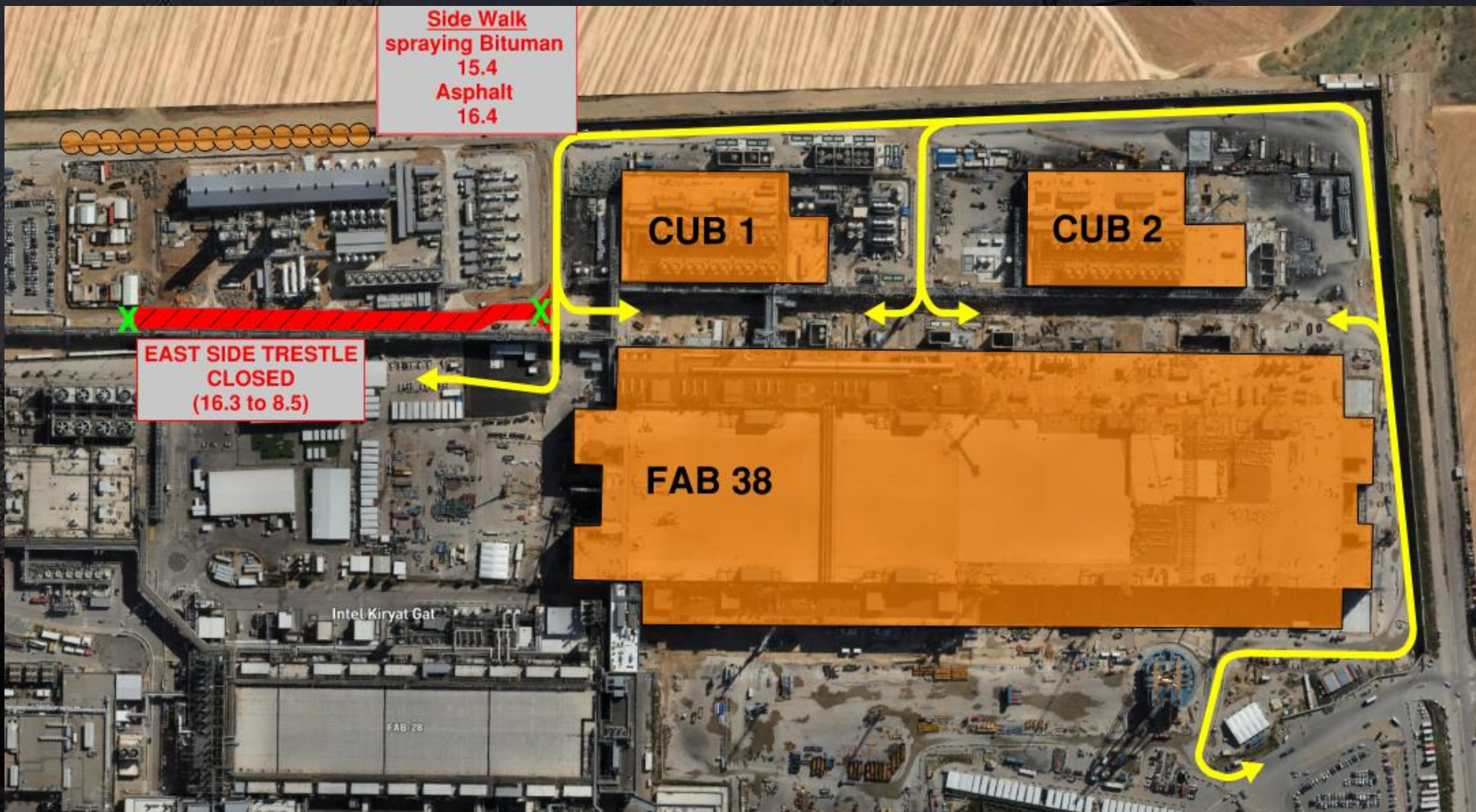




Daily Coordination Meeting

Site Logistics

North





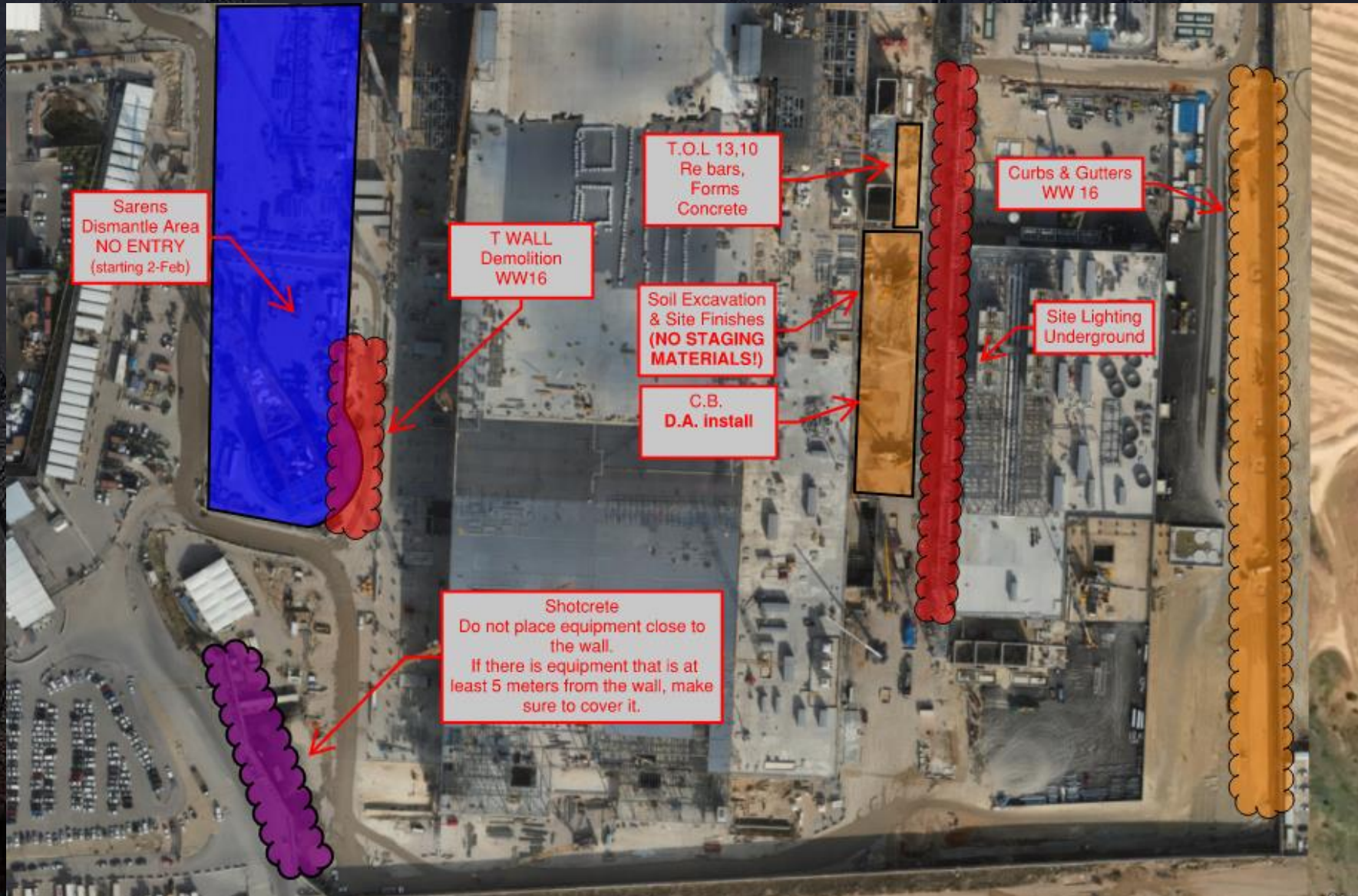
Daily Coordination Meeting

Site Logistics North



Daily Coordination Meeting

Site Logistics South



Daily Coordination Meeting

MAMAD Locations

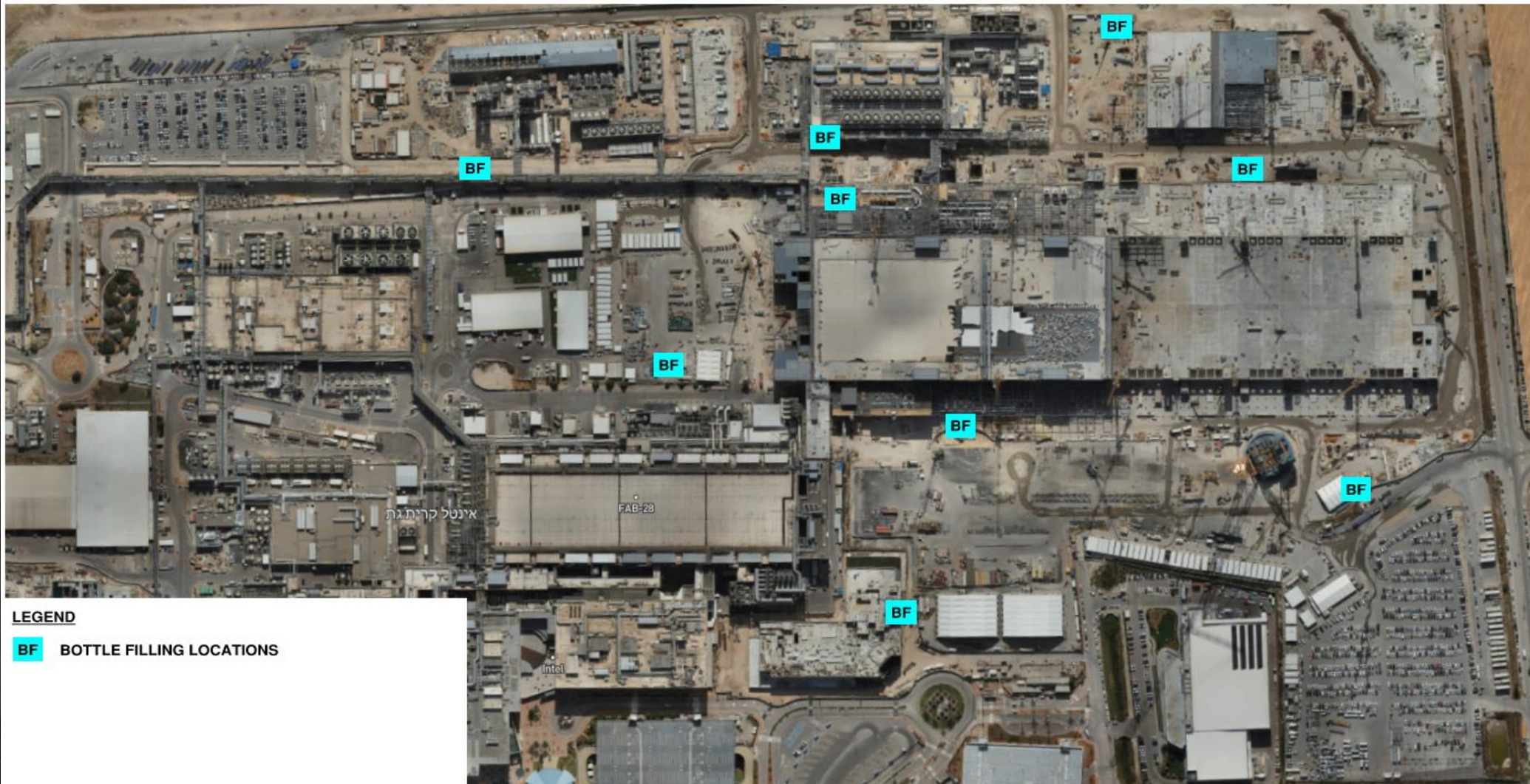
MAMAD LOCATIONS (19-March-2025)
■ LARGE
■ SMALL
■ BUILDING



Daily Coordination Meeting

WATER BOTTLE FILLING STATIONS

WATER BOTTLE FILLING STATIONS







BACK TO WORK REQUIREMENTS

1. All workers must go through the training that was done at 7am on the Mass Safety Meeting.
2. Perform audits on all equipment onsite (forklifts, MEWP, cranes, etc.). Upload MEWP checklists.
3. Update all the RAMS that include MEWP.
4. Training on company policies for loaning equipment to others. Make sure each MEWP has a company name on it.
5. Training on new site policy of MEWP use. Have list of all approved operators and spotters for each MEWP. A printed copy has to be on each MEWP.
6. Submit all training records.



Training records submitted by subcontractors:

- A.S Barzel
- Afcon Contracting Services
- CHEMO AHARON
- Derech Afar
- Olizki
- Meptagon
- Newco - Tec LTD

Daily Coordination Meeting



14:00 Sign In