

Daily Coordination Meeting

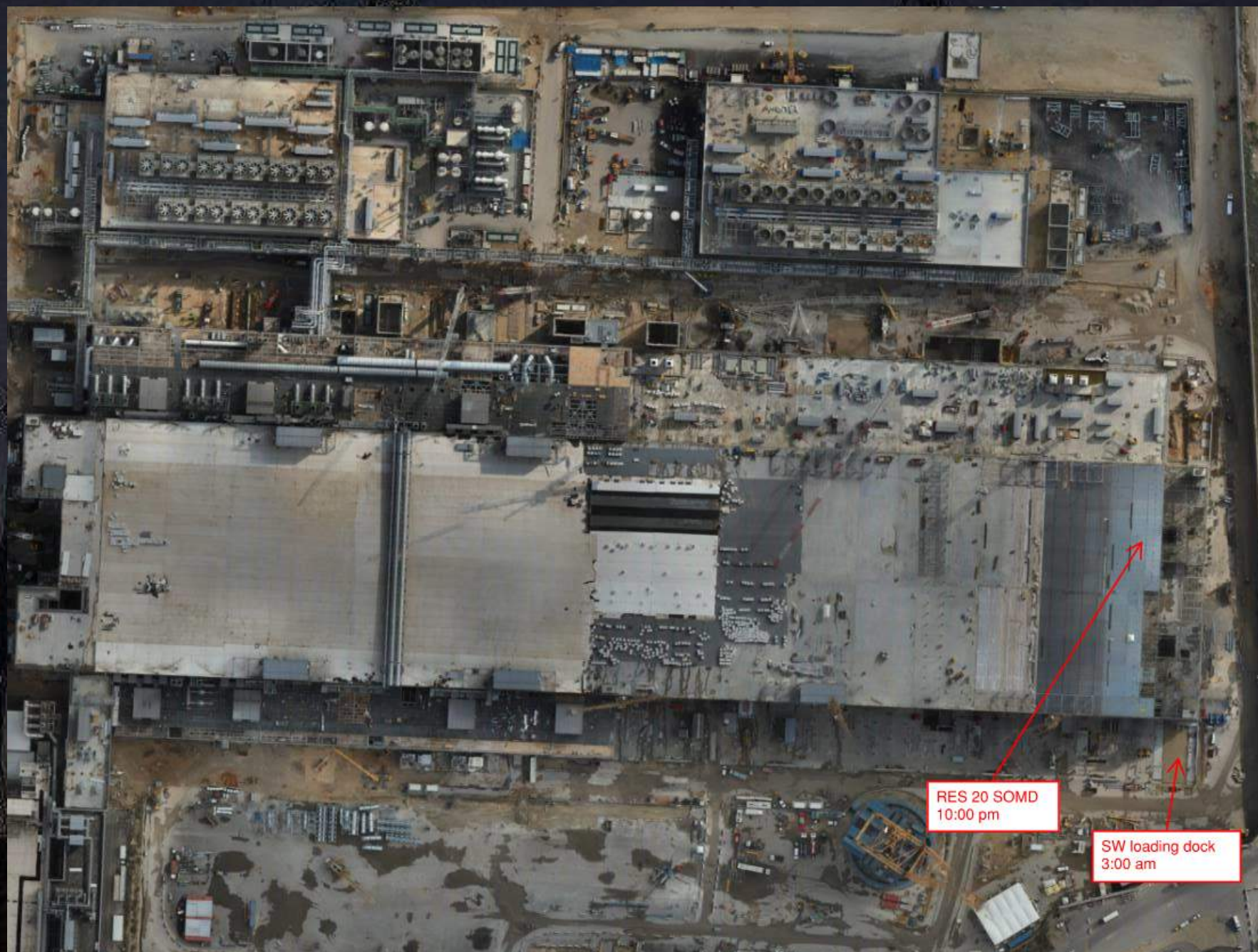


14:00 Sign In

Daily Coordination Meeting

General Topics:

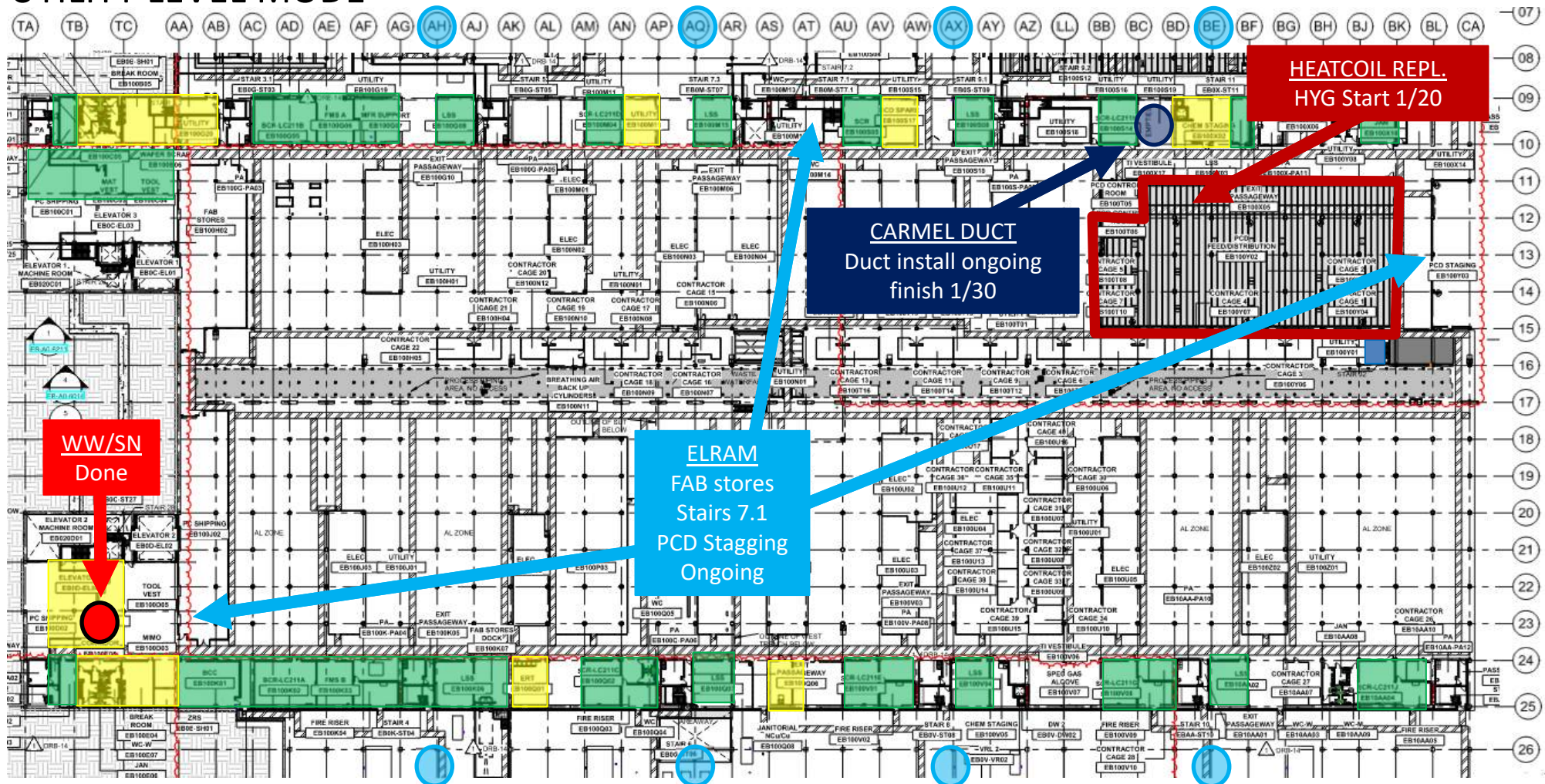
- Exclusion Zones - Do not Share With Overhead Work



RES 20 SOMD
10:00 pm

SW loading dock
3:00 am

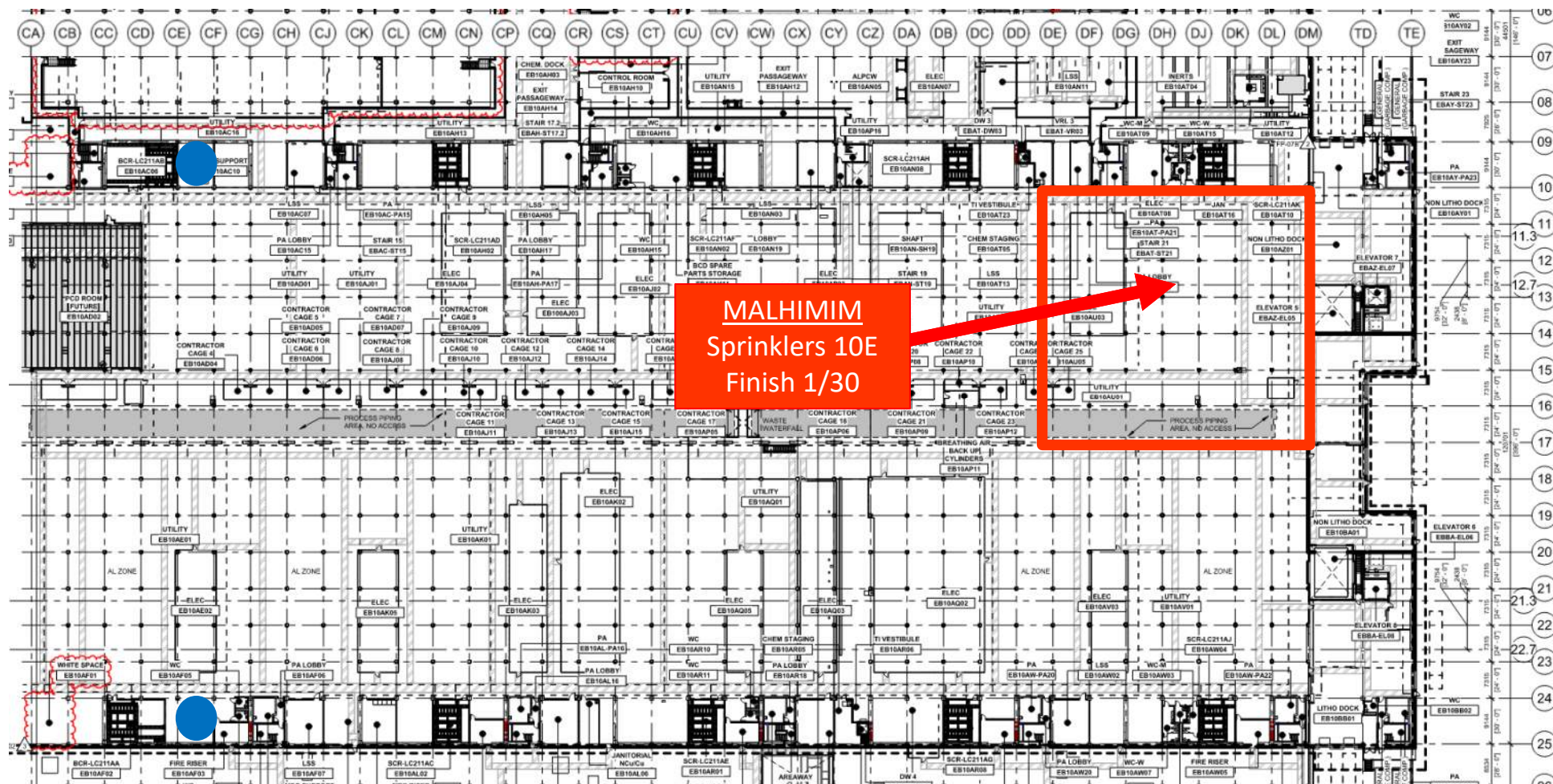
UTILITY LEVEL MOD1



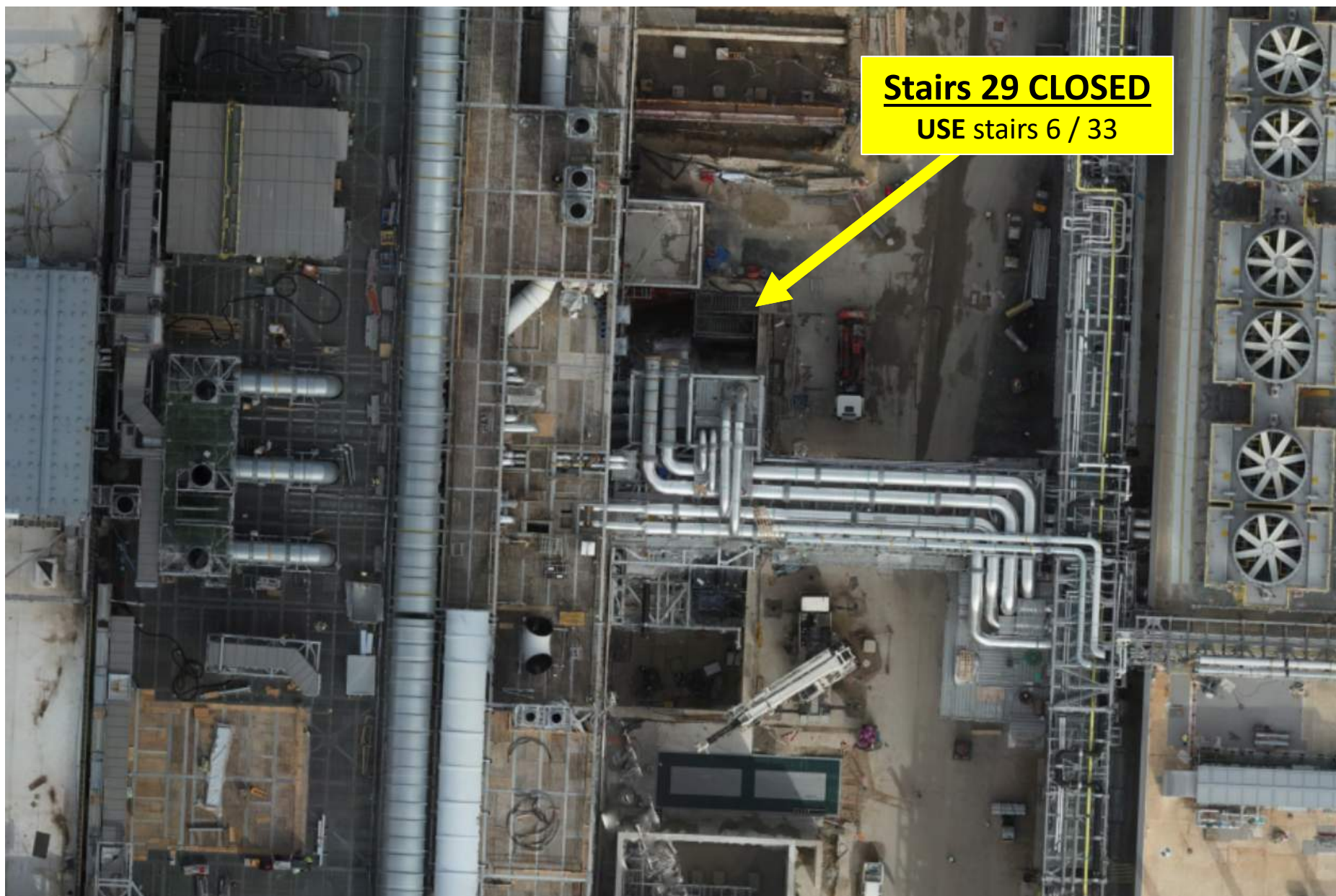
ELRAM
Drywall install

MEP+Elctrical
Ready for re-install

UTILITY LEVEL MOD2



SUT 38.1 Accesses& Egress



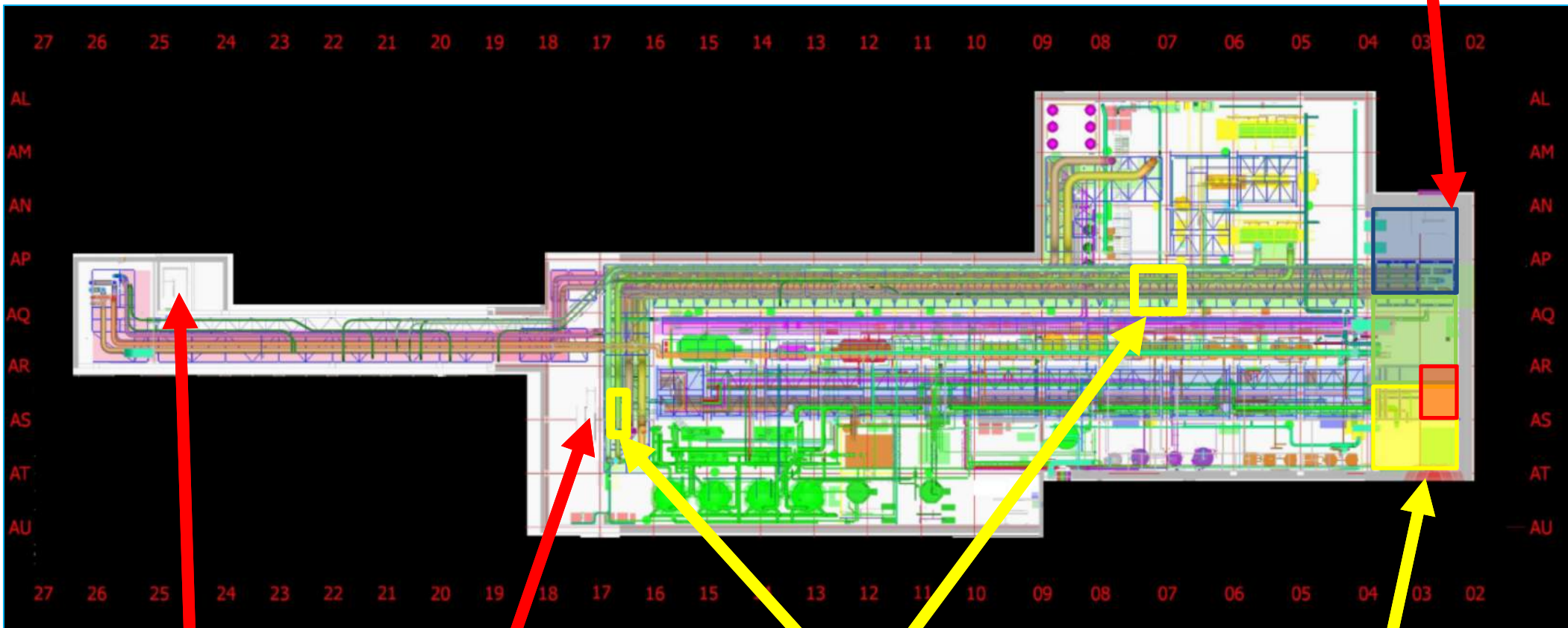


HOFFMAN CONSTRUCTION COMPANY



SUT 38.1 LEVEL

Stairs 29 CLOSED



STARIS 6

STARIS 33

CRC

Topping slab Schedule

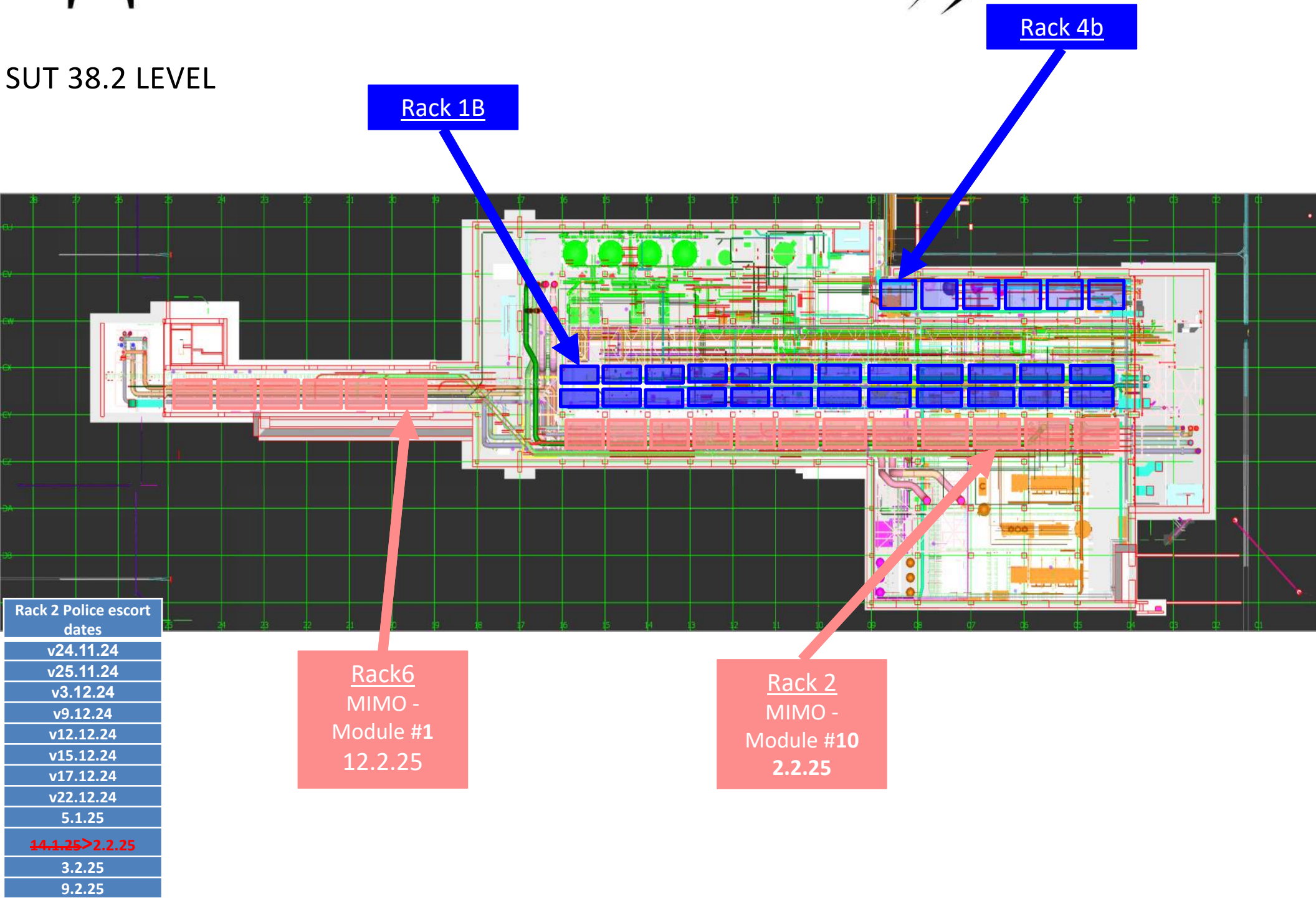
- Pour 1 – 1/9 – 1/15
- Pour 2 – 1/15 – 1/22
- Pour 3 -1/22-1/27
- Pour 4 – 1/28-2/4



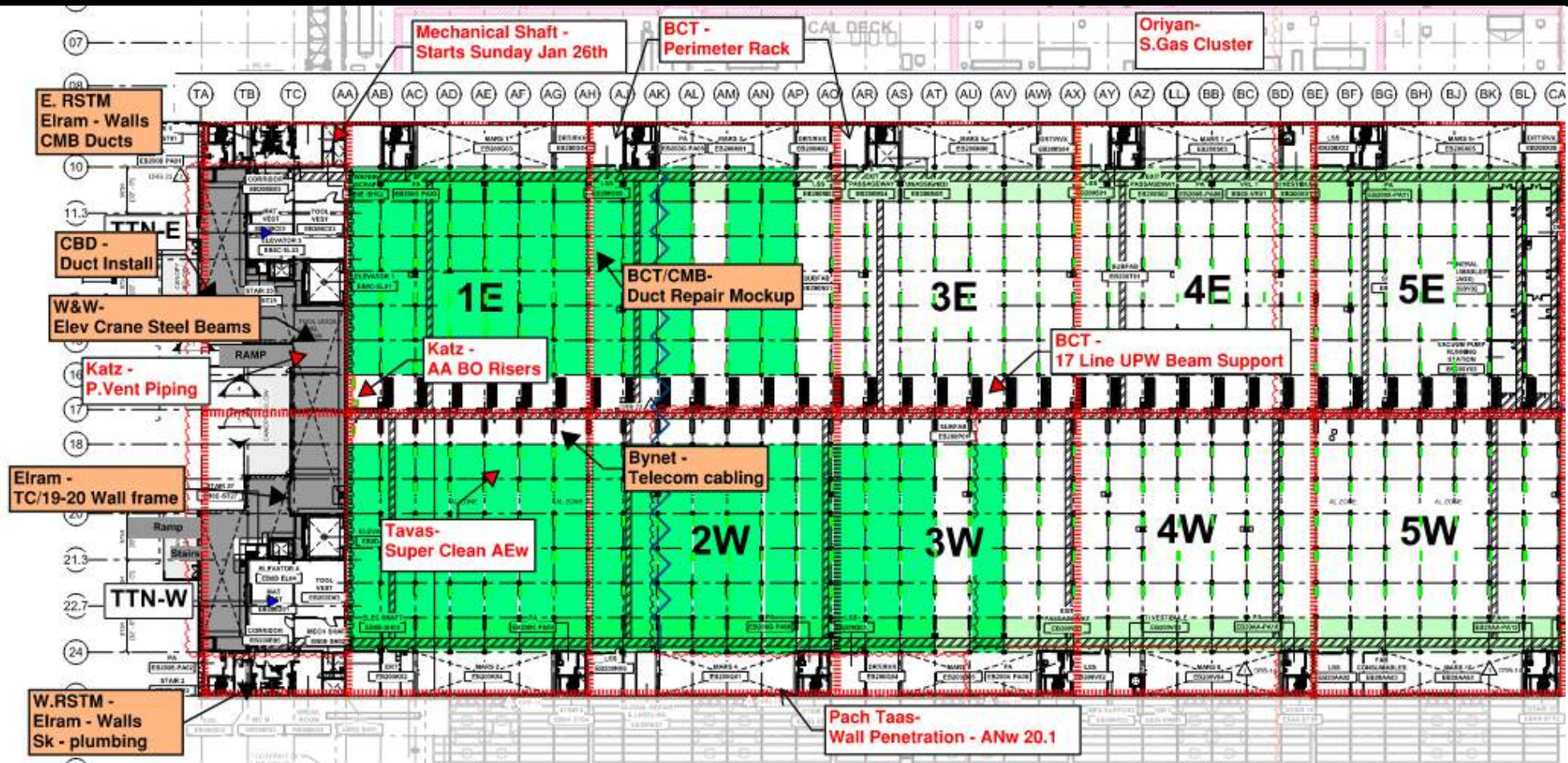
HOFFMAN CONSTRUCTION COMPANY



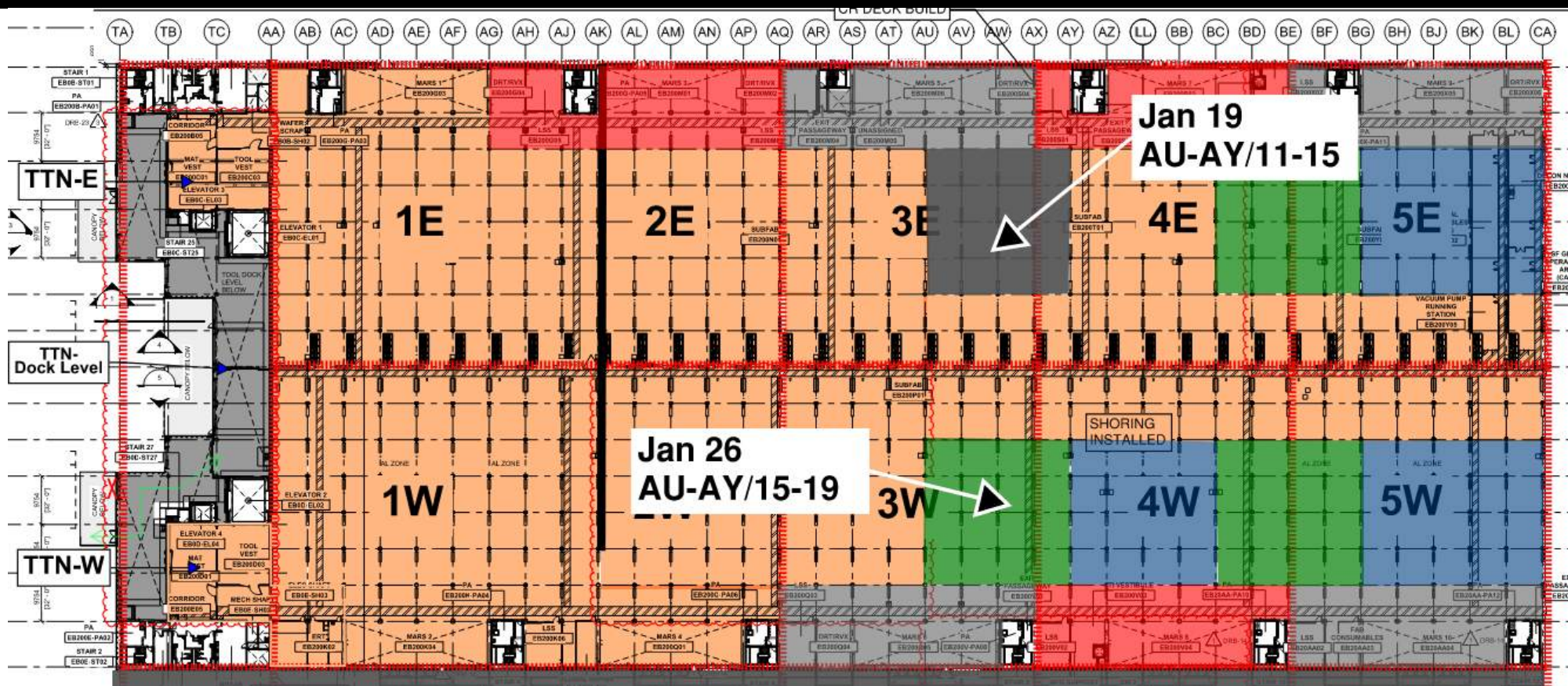
SUT 38.2 LEVEL



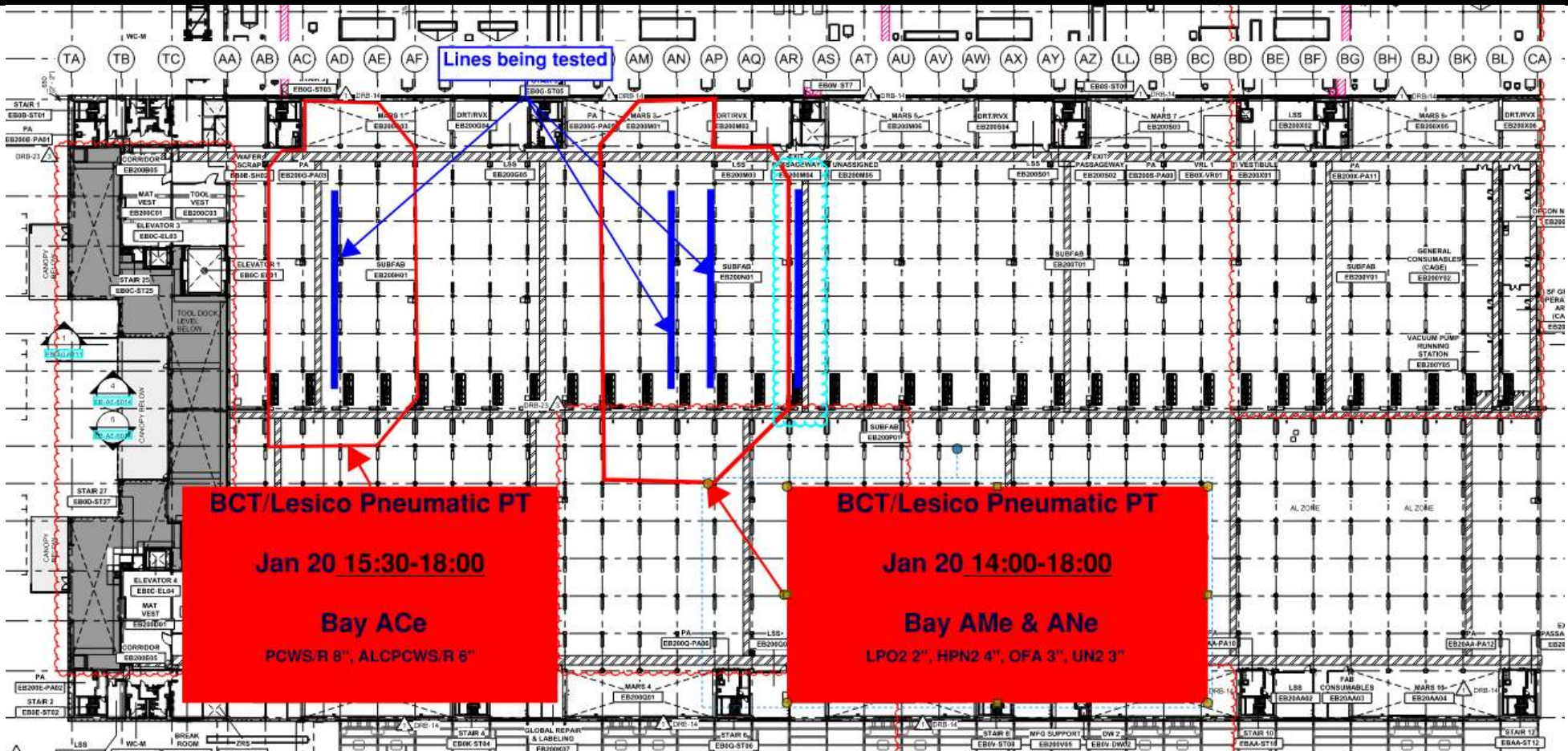
SUBFAB BUILDOUT MOD 1



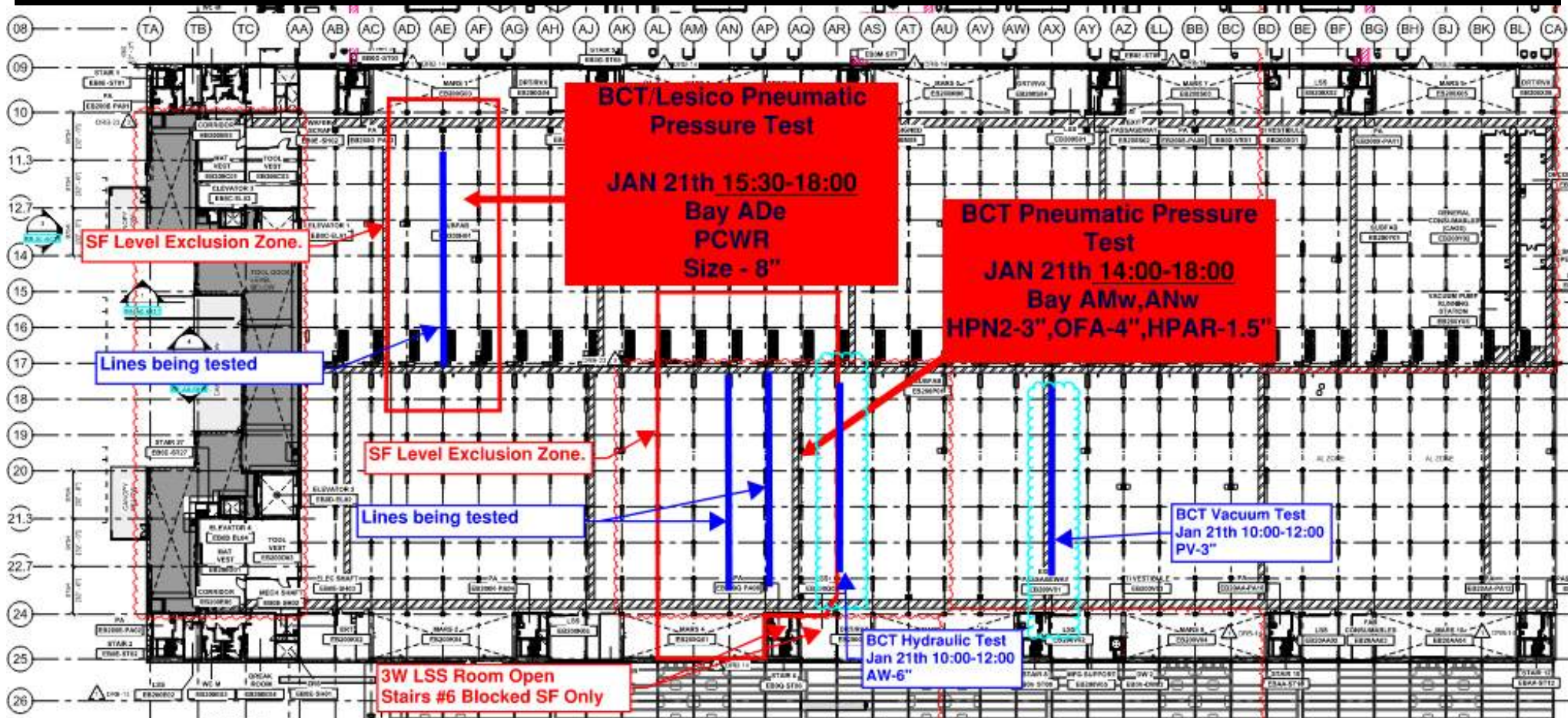
SUBFAB CRC TOPCOAT



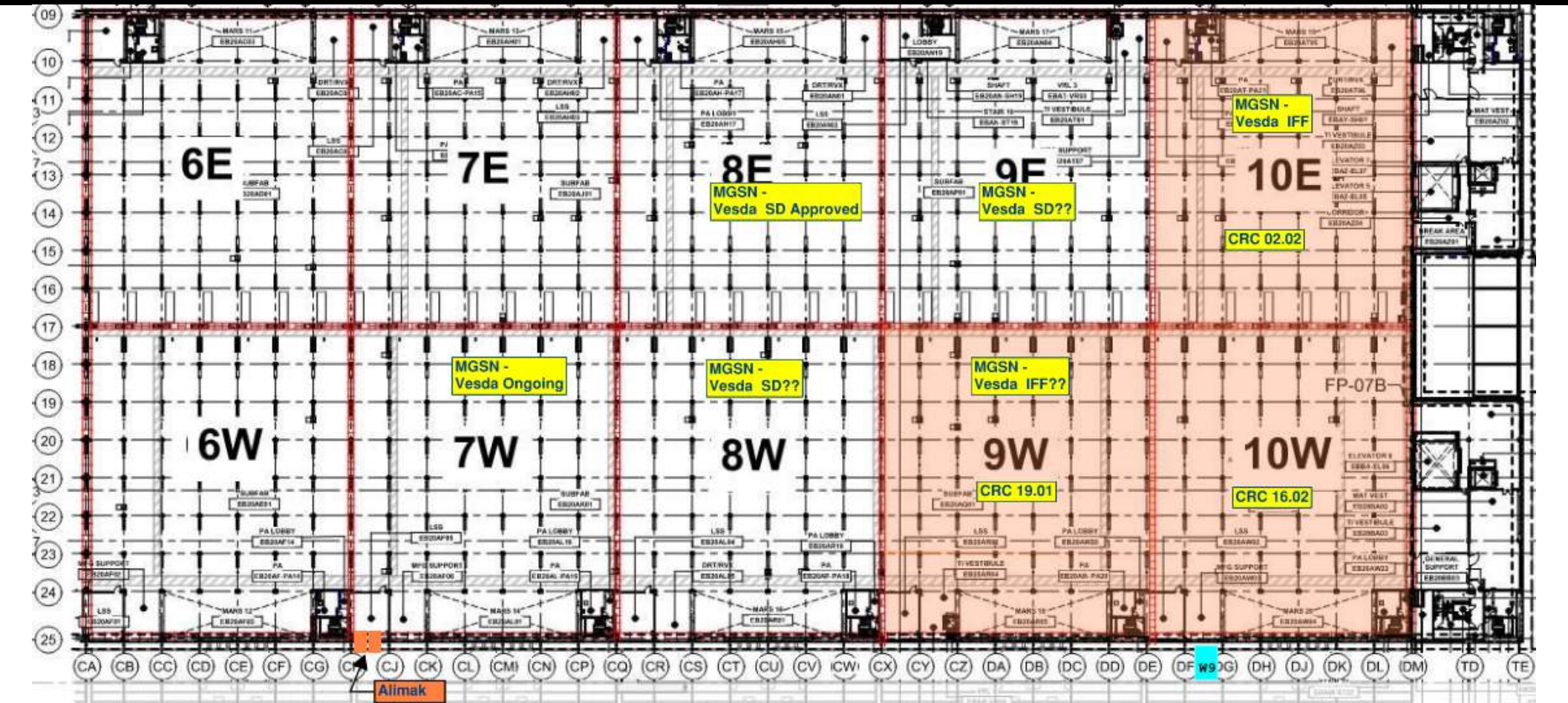
BCT Pressure Test Today

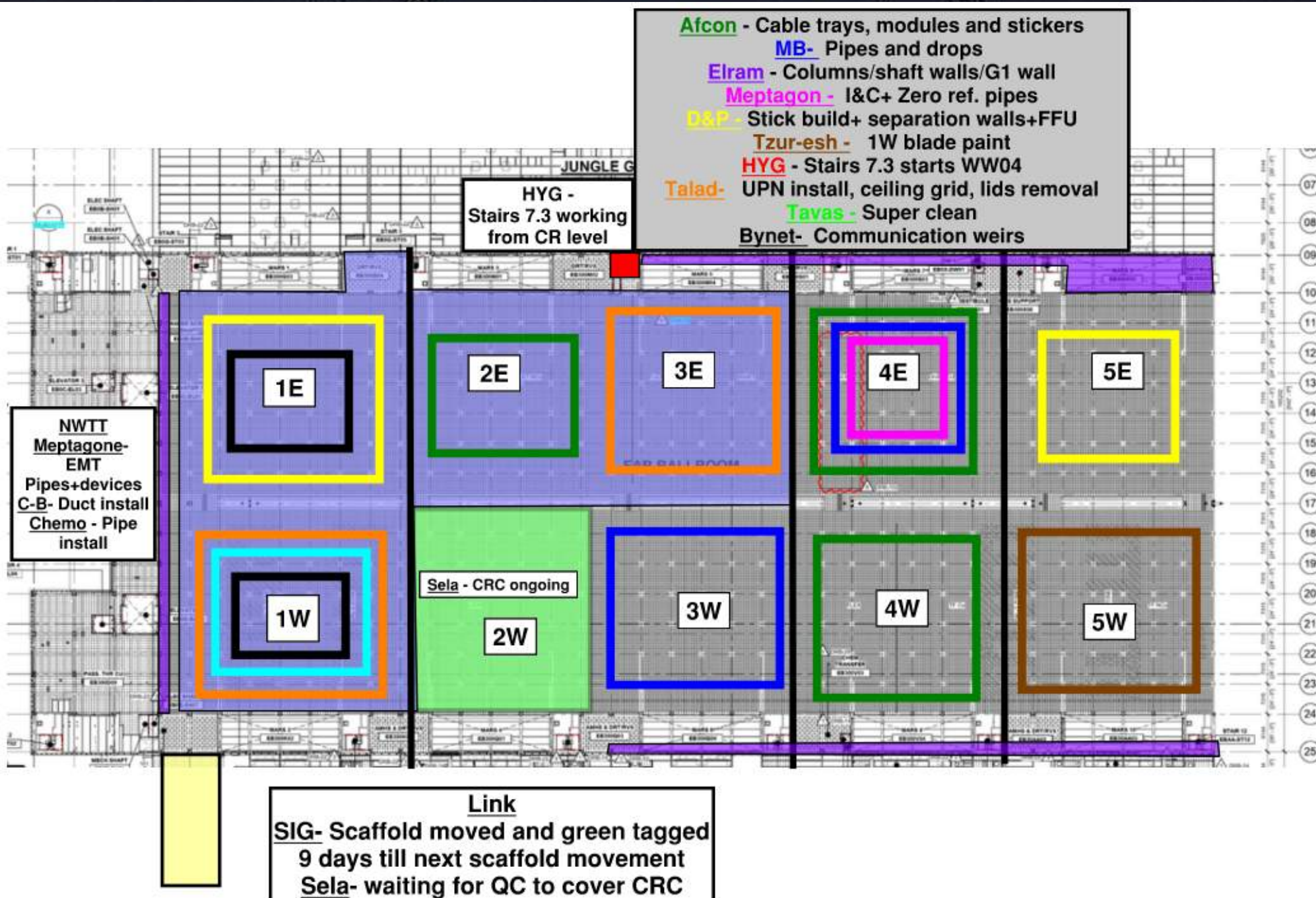


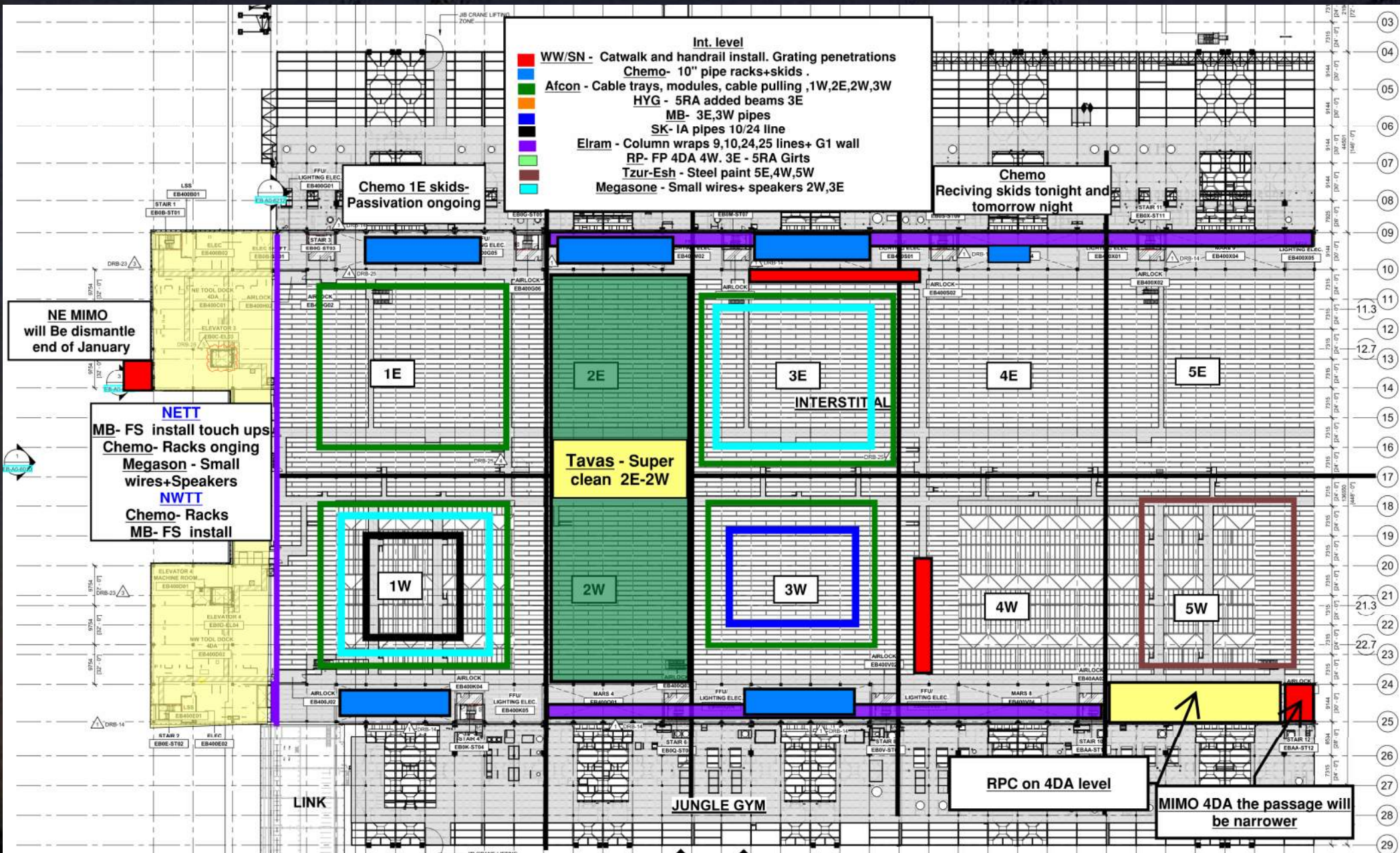
BCT Pressure Test Tomorrow

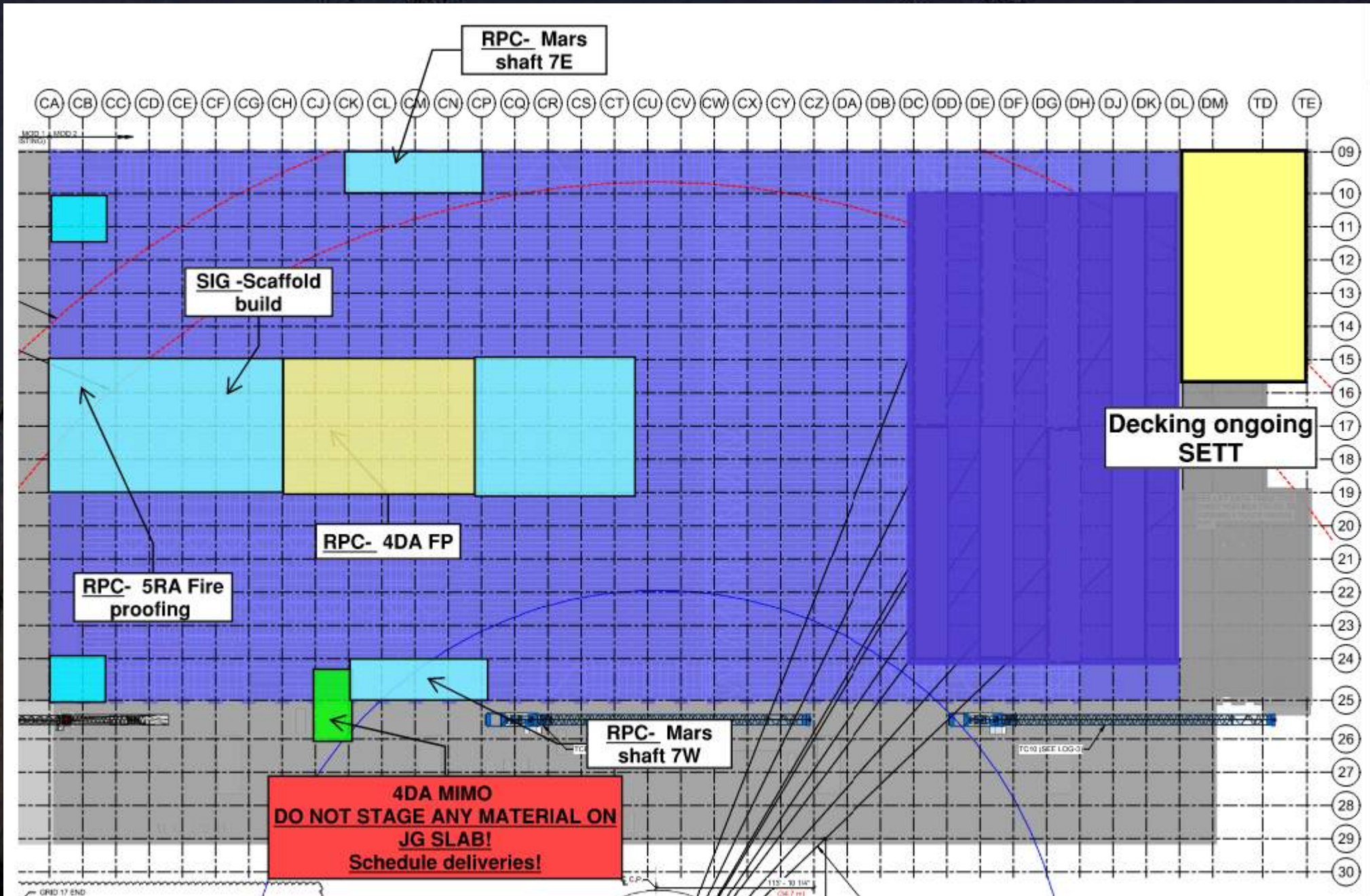


SUBFAB BUILDOUT MOD 2









Siding - East FAB - PSSS

BLOWDOWN 30%

	CA	BL	BK	BJ	BH	BG	BF	BE	BD	BC	BB	BA	AZ	AY	AX	AW	AV	AU	AT	AS	AR	AG	AP	AN	AM	AL	AK	AJ	AI	AG	AF	AE	AD	AC	AB	AA	TC	TB	TA																																																																																																																																																																																																																																																																																																																																																																																																																																																																																																																																																																																																																																																																																																																																																																																																																																																																																																																																																																																																																																																																																			
	751/752				741/742				731/732				721/722				711/712				551/552				541/542				531/532				521/522			511/512				501/502			901/902																																																																																																																																																																																																																																																																																																																																																																																																																																																																																																																																																																																																																																																																																																																																																																																																																																																																																																																																																																																																																																																																															
	24	24	24	24	24	24	24	24	24	24	24	24	24	24	24	24	24	24	24	24	24	24	24	24	24	24	24	17	17	17	24	24	24	24	24	24	24	24	24	24	24	24	24	24	24	24	24	24	24	24	24	24	24	24	24	24	24	24	24	24	24	24	24	24	24	24	24	24	24	24	24	24	24	24	24	24	24	24	24	24	24	24	24	24	24	24	24	24	24	24	24	24	24	24	24	24	24	24	24	24	24	24	24	24	24	24	24	24	24	24	24	24	24	24	24	24	24	24	24	24	24	24	24	24	24	24	24	24	24	24	24	24	24	24	24	24	24	24	24	24	24	24	24	24	24	24	24	24	24	24	24	24	24	24	24	24	24	24	24	24	24	24	24	24	24	24	24	24	24	24	24	24	24	24	24	24	24	24	24	24	24	24	24	24	24	24	24	24	24	24	24	24	24	24	24	24	24	24	24	24	24	24	24	24	24	24	24	24	24	24	24	24	24	24	24	24	24	24	24	24	24	24	24	24	24	24	24	24	24	24	24	24	24	24	24	24	24	24	24	24	24	24	24	24	24	24	24	24	24	24	24	24	24	24	24	24	24	24	24	24	24	24	24	24	24	24	24	24	24	24	24	24	24	24	24	24	24	24	24	24	24	24	24	24	24	24	24	24	24	24	24	24	24	24	24	24	24	24	24	24	24	24	24	24	24	24	24	24	24	24	24	24	24	24	24	24	24	24	24	24	24	24	24	24	24	24	24	24	24	24	24	24	24	24	24	24	24	24	24	24	24	24	24	24	24	24	24	24	24	24	24	24	24	24	24	24	24	24	24	24	24	24	24	24	24	24	24	24	24	24	24	24	24	24	24	24	24	24	24	24	24	24	24	24	24	24	24	24	24	24	24	24	24	24	24	24	24	24	24	24	24	24	24	24	24	24	24	24	24	24	24	24	24	24	24	24	24	24	24	24	24	24	24	24	24	24	24	24	24	24	24	24	24	24	24	24	24	24	24	24	24	24	24	24	24	24	24	24	24	24	24	24	24	24	24	24	24	24	24	24	24	24	24	24	24	24	24	24	24	24	24	24	24	24	24	24	24	24	24	24	24	24	24	24	24	24	24	24	24	24	24	24	24	24	24	24	24	24	24	24	24	24	24	24	24	24	24	24	24	24	24	24	24	24	24	24	24	24	24	24	24	24	24	24	24	24	24	24	24	24	24	24	24	24	24	24	24	24	24	24	24	24	24	24	24	24	24	24	24	24	24	24	24	24	24	24	24	24	24	24	24	24	24	24	24	24	24	24	24	24	24	24	24	24	24	24	24	24	24	24	24	24	24	24	24	24	24	24	24	24	24	24	24	24	24	24	24	24	24	24	24	24	24	24	24	24	24	24	24	24	24	24	24	24	24	24	24	24	24	24	24	24	24	24	24	24	24	24	24	24	24	24	24	24	24	24	24	24	24	24	24	24	24	24	24	24	24	24	24	24	24	24	24	24	24	24	24	24	24	24	24	24	24	24	24	24	24	24	24	24	24	24	24	24	24	24	24	24	24	24	24	24	24	24	24	24	24	24	24	24	24	24	24	24	24	24	24	24	24	24	24	24	24	24	24	24	24	24	24	24	24	24	24	24	24	24	24	24	24	24	24	24	24	24	24	24	24	24	24	24	24	24	24	24	24	24	24	24	24	24	24	24	24	24	24	24	24	24	24	24	24	24	24	24	24	24	24	24	24	24	24	24	24	24	24	24	24	24	24	24	24	24	24	24	24	24	24	24	24	24	24	24	24	24	24	24	24	24	24	24	24	24	24	24	24	24	24	24	24	24	24	24	24	24	24	24	24	24	24	24	24	24	24	24	24	24	24	24	24	24	24	24	24	24	24	24	24	24	24	24	24	24	24	24	24	24	24	24	24	24	24	24	24	24	24	24	24	24	24	24	24	24	24	24	24	24	24	24	24	24	24	24	24	24	24	24	24	24	24	24	24	24	24	24	24	24	24	24	24	24	24	24	24	24	24	24	24	24	24	24	24	24	24	24	24	24	24	24	24	24	24	24	24	24	24	24	24	24	24	24	24	24	24	24	24	24	24	24	24	24	24	24	24	24	24	24	24	24	24	24	24	24	24	24	24	24	24	24	24	24	24	24	24	24	24	24	24	24	24	24	24	24	24	24	24	24	24	24	24	24	24	24	24	24	24	24	24	24	24	24	24	24	24	24	24	24	24	24	24	24	24	24	24	24	24	24	24	24	24	24	24	24	24	24	24	24	24	24	24	24	24	24	24	24	24	24	24	24	24	24	24	24	24	24	24	24	24	24	24	24	24	24	24	24	24	24	24	24	24	24	24	24	24	24	24	24	24	24	24	24	24	24	24	24	24	24	24	24	24	24	24	24	24	24	24	24	24	24	24	24	24	24	24	24	24	24	24	24	24	24	24	24	24	24	24	24	24	24	24	24	24	24

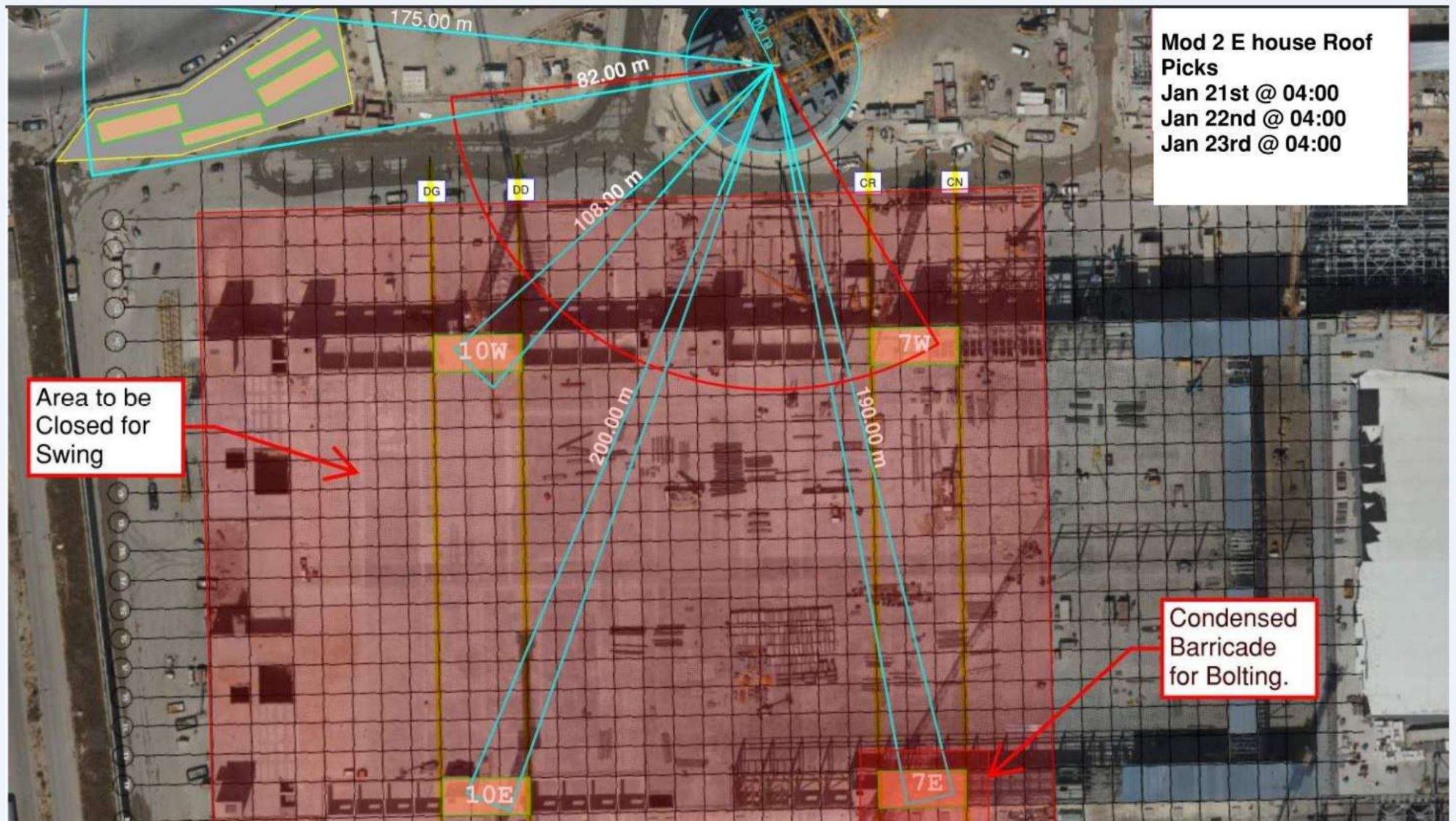
DEMO

[illegible]

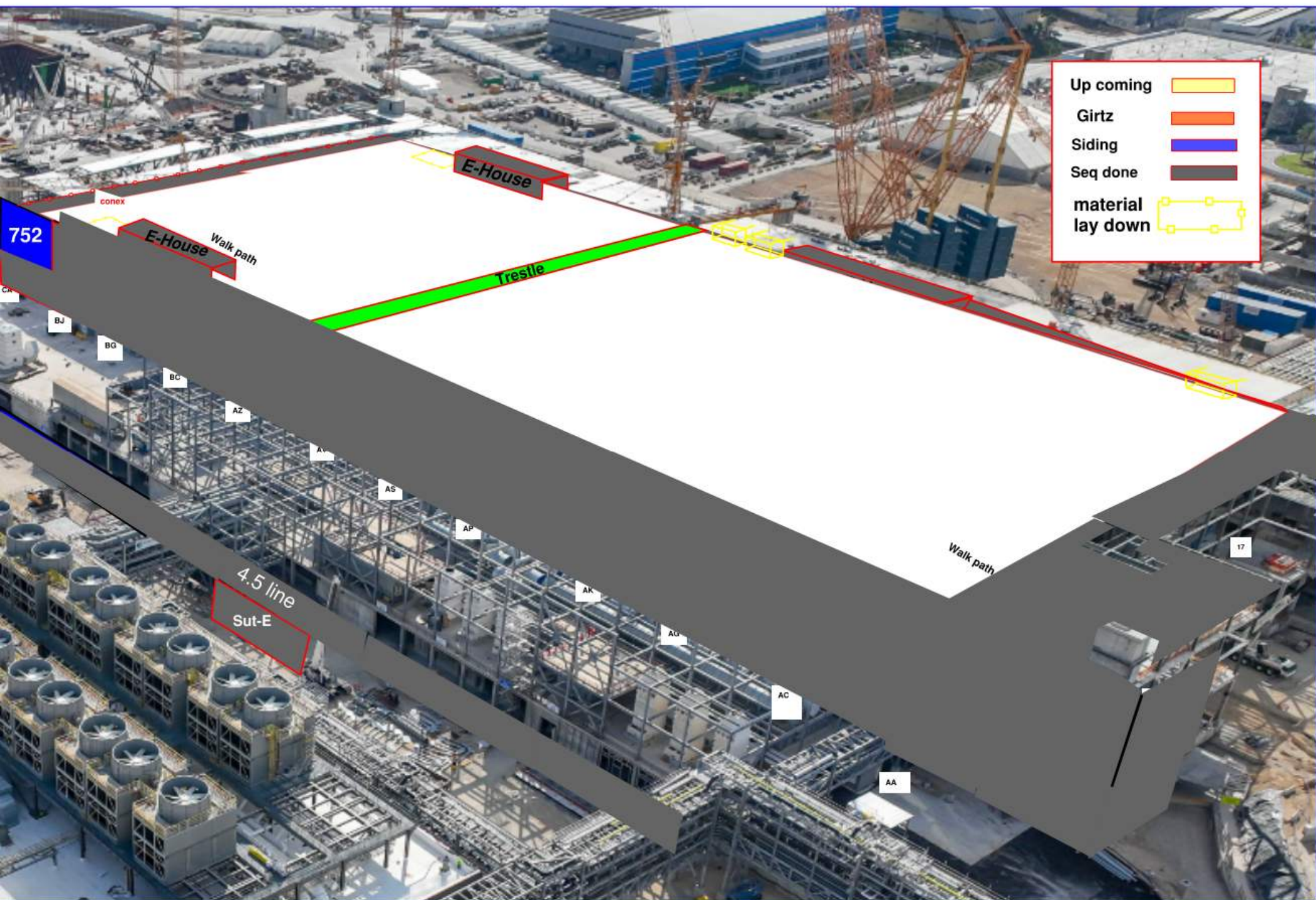
Siding - North FAB

100% - BLOWDOWN

	9	10	11	12	13	14	TA	TB	TC	14	14.5	15	15.5	16.5	17.5	18.5	19	19.5	20	TC	TB	TA	20	21	22	23	24	25											
Total Installed %	901C / 901C						911A / 912A						911B / 912B						911C / 912C						1011C / 1012C						1011B / 1012B			1011A / 1012A			1001C / 1002C		
	29	29	29	29	29	29	29	29	29	27	18	9	27	27	27	27	27	9	18	29	29	29	29	29	29	29	29	29											
	100%	100%	45%	0%	0%	0%	100%	100%	100%	100%	100%	100%	100%	100%	100%	100%	30%	100%	0%	100%	100%	100%	100%	100%	100%	100%	100%	100%											
29	1	1	0				1	1												1	1		1	1	1	1	1	1											
28	1	1	0				1	1												1	1		1	1	1	1	1	1											
27	1	1	0				1	1		1	1	1	1	1	1	1	1	1	1	1	1		1	1	1	1	1	1											
26	1	1	0				1	1		1	1	1	1	1	1	1	1	1	1	1	1		1	1	1	1	1	1											
25	1	1	0				1	1		1	1	1	1	1	1	1	1	1	1	1	1		1	1	1	1	1	1											
24	1	1	0				1	1		1	1	1	1	1	1	1	1	1	1	1	1		1	1	1	1	1	1											
23	1	1	0				1	1		1	1	1	1	1	1	1	1	1	1	1	1		1	1	1	1	1	1											
22	1	1	0				1	1		1	1	1	1	1	1	1	1	1	1	1	1		1	1	1	1	1	1											
21	1	1	0				1	1		1	1	1	1	1	1	1	1	1	1	1	1		1	1	1	1	1	1											
20	1	1	0				1	1		1	1	1	1	1	1	1	1	1	1	1	1		1	1	1	1	1	1											
19	1	1	0				1	1		1	1	1	1	1	1	1	1	1	1	1	1		1	1	1	1	1	1											
18	1	1	0				1	1		1	1	1	1	1	1	1	1	1	1	1	1		1	1	1	1	1	1											
17	1	1	0				1	1		1	1	1	1	1	1	1	1	1	1	1	1		1	1	1	1	1	1											
16	1	1	0				1	1		1	1	1	1	1	1	1	1	1	1	1	1		1	1	1	1	1	1											
15	1	1	0				1	1		1	1	1	1	1	1	1	1	1	1	1	1		1	1	1	1	1	1											
14	1	1	0				1	1		1	1	1	1	1	1	1	1	1	1	1	1		1	1	1	1	1	1											
13	1	1	1				1	1		1	1	1	1	1	1	1	1	1	1	1	1		1	1	1	1	1	1											
12	1	1	1				1	1		1	1	1	1	1	1	1	1	1	1	1	1		1	1	1	1	1	1											
11	1	1	1				1	1		1	1	1	1	1	1	1	1	1	1	1	1		1	1	1	1	1	1											
10	1	1	1				1	1		1	1	1	1	1	1	1	1	1	1	1	1		1	1	1	1	1	1											
9	1	1	1				1	1		1	1	1	1	1	1	1	1	1	1	1	1		1	1	1	1	1	1											
8	1	1	1				1	1		1	1	1	1	1	1	1	1	1	1	1	1		1	1	1	1	1	1											
7	1	1	1				1	1		1	1	1	1	1	1	1	1	1	1	1	1		1	1	1	1	1	1											
6	1	1	1				1	1		1	1	1	1	1	1	1	1	1	1	1	1		1	1	1	1	1	1											
5	1	1	1				1	1		1	1	1	1	1	1	1	1	1	1	1	1		1	1	1	1	1	1											
4	1	1	1				1	1		1	1	1	1	1	1	1	1	1	1	1	1		1	1	1	1	1	1											
3	1	1	1				1	1		1	1	1	1	1	1	1	1	1	1	1	1		1	1	1	1	1	1											
2	1	1	1				1	1		1	1	1	1	1	1	1	1	1	1	1	1		1	1	1	1	1	1											
1	1	1	1				1	1		1	1	1	1	1	1	1	1	1	1	1	1		1	1	1	1	1	1											



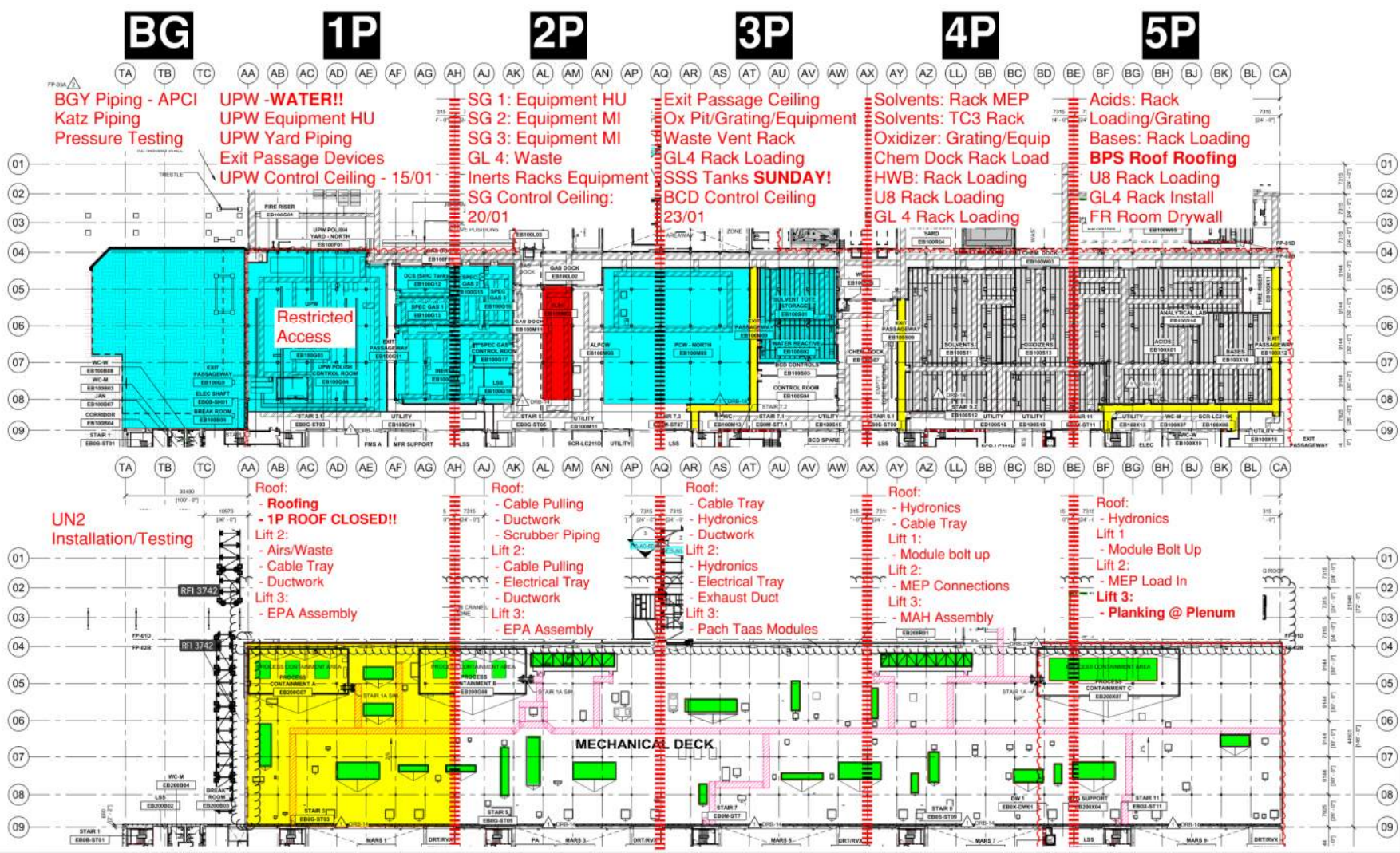
Mod 2 E house Roof
Picks
Jan 21st @ 04:00
Jan 22nd @ 04:00
Jan 23rd @ 04:00



PSSS.1

Utility Level
1YA

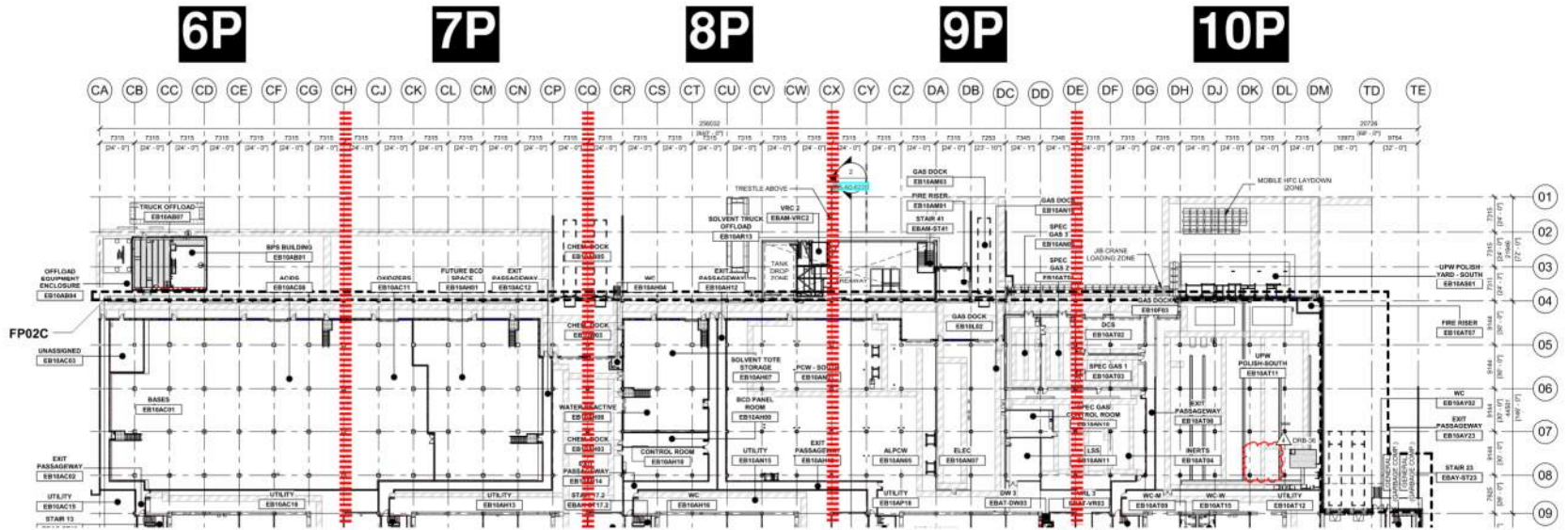
PSSS Roof
2SA



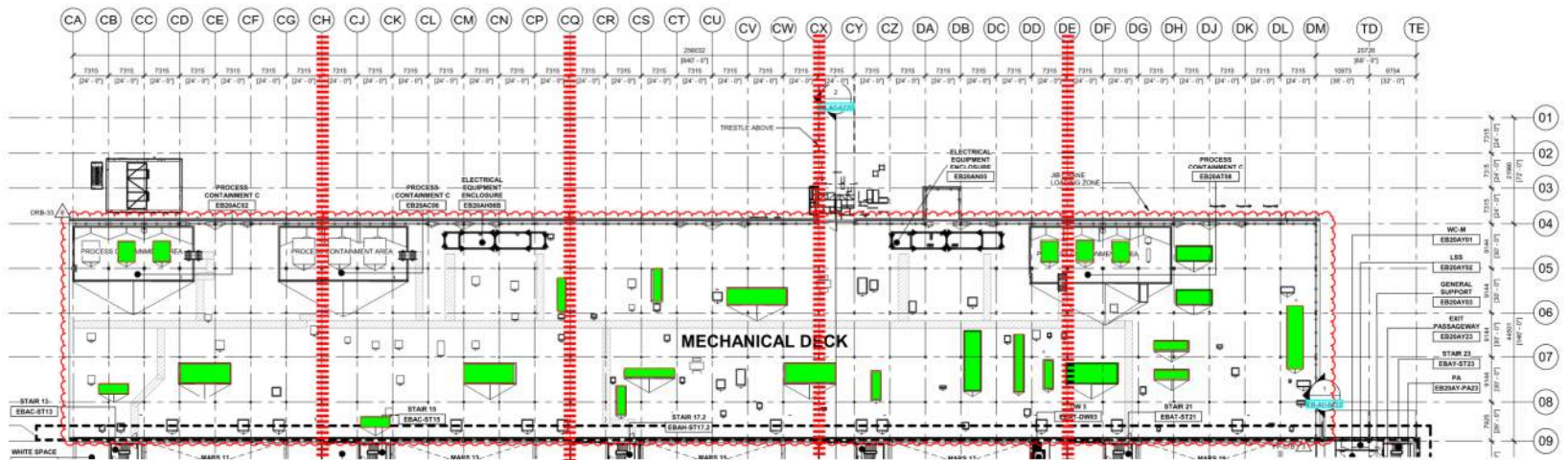
PSSS.2

Utility Level

1YA



PSSS Roof
2SA



SSS Tank Set

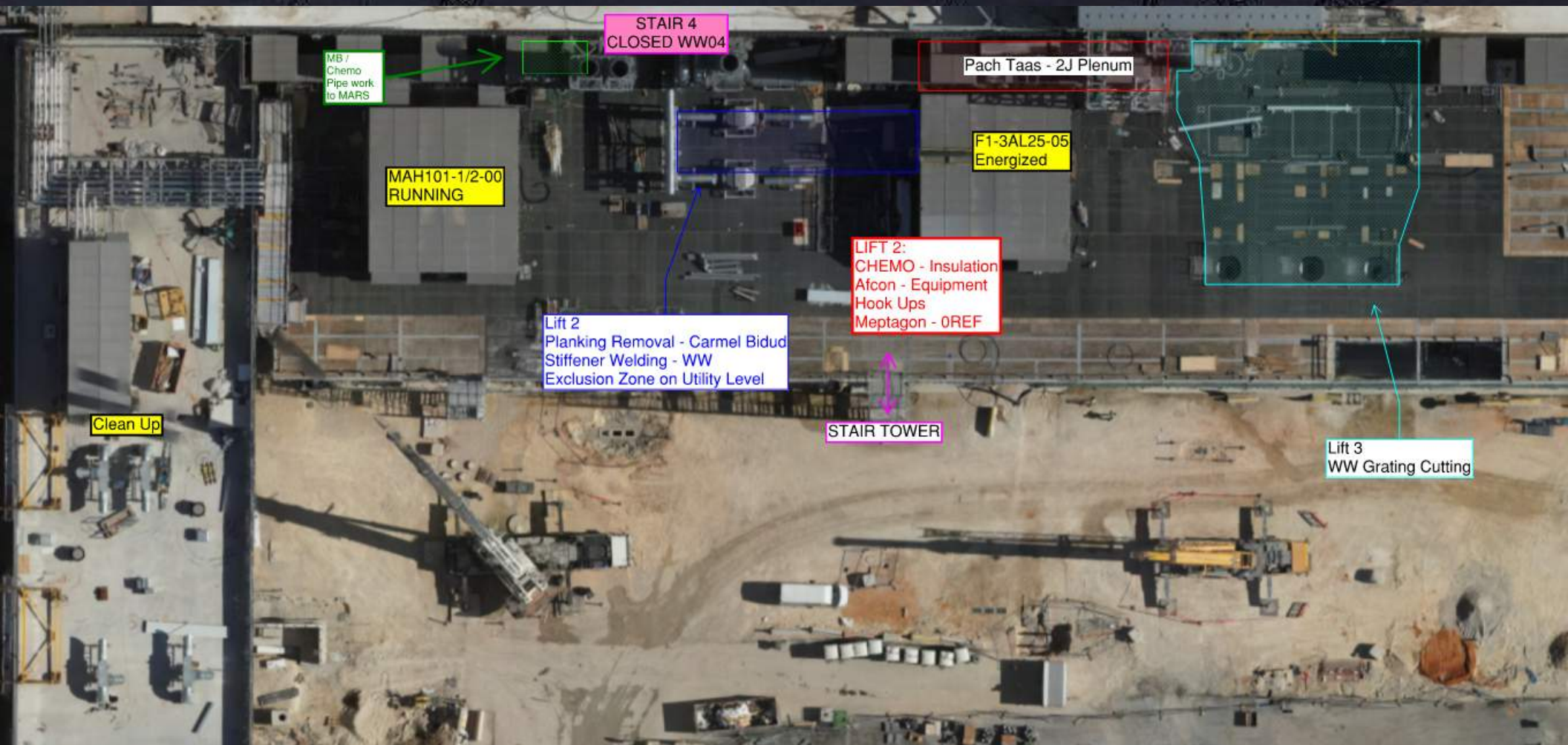
20/01 - All Day



Road Closed to all
traffic

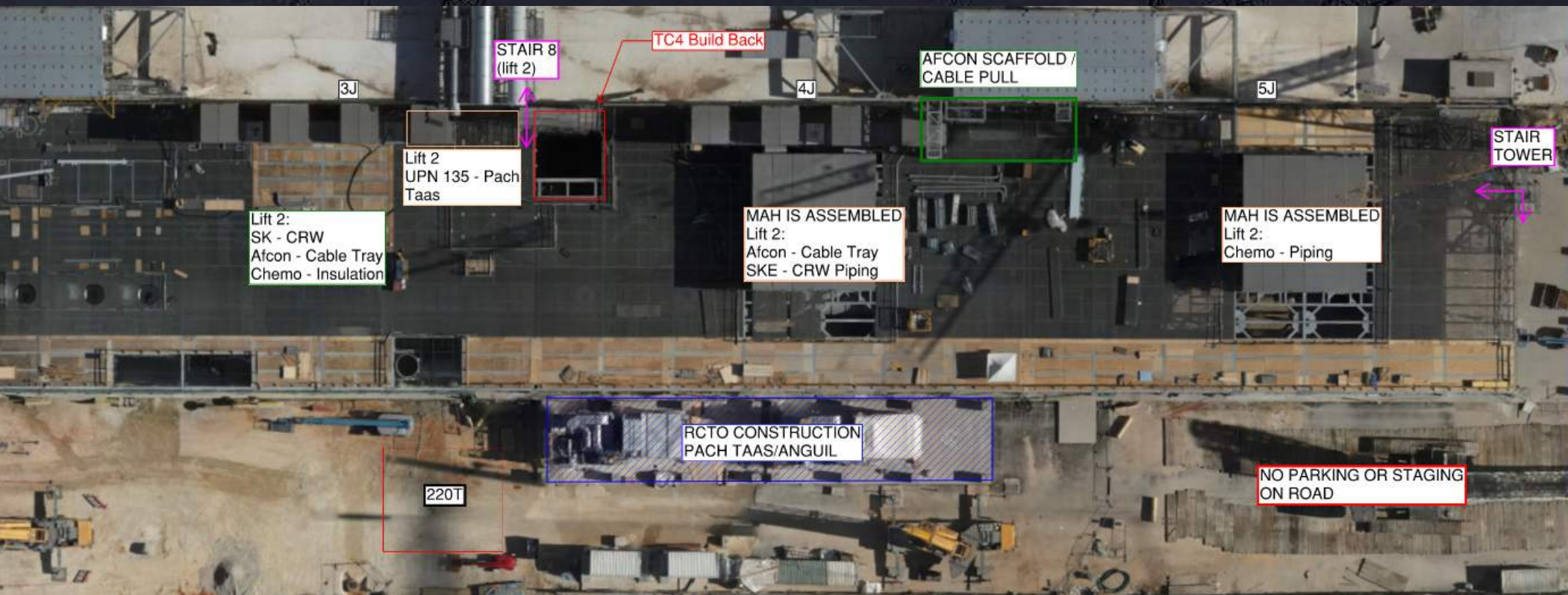


WJG 01J, 02J LIFT 2 & 3

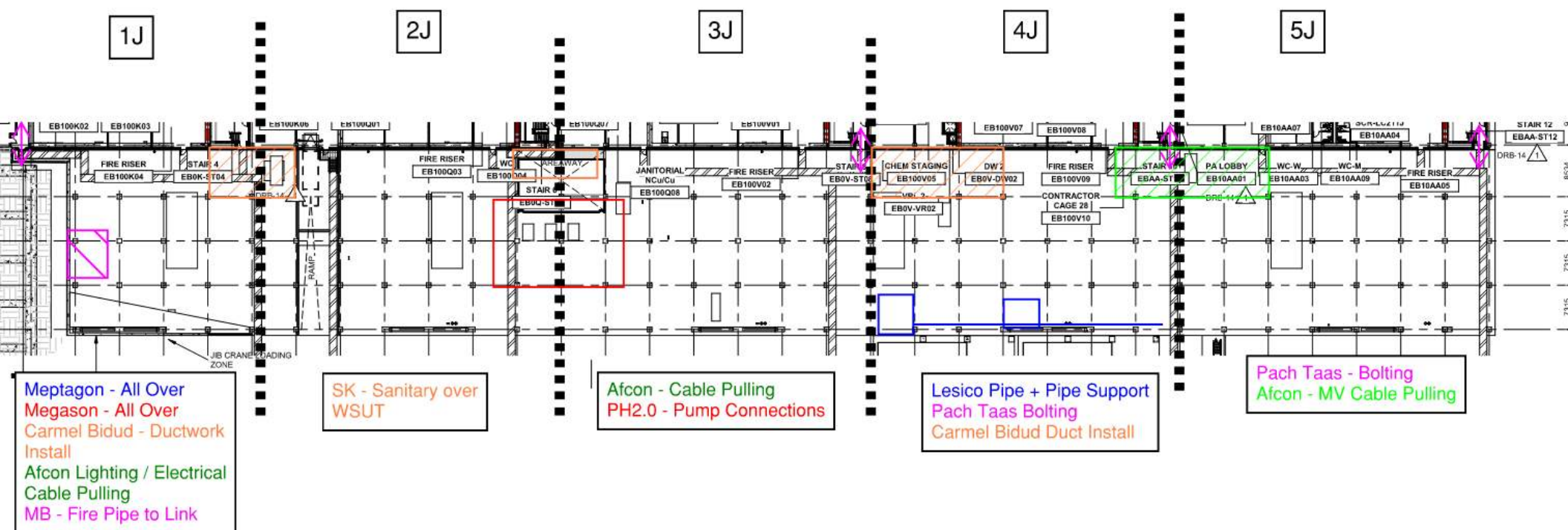




WJG 03J, 04J, 05J LIFT 2 & 3



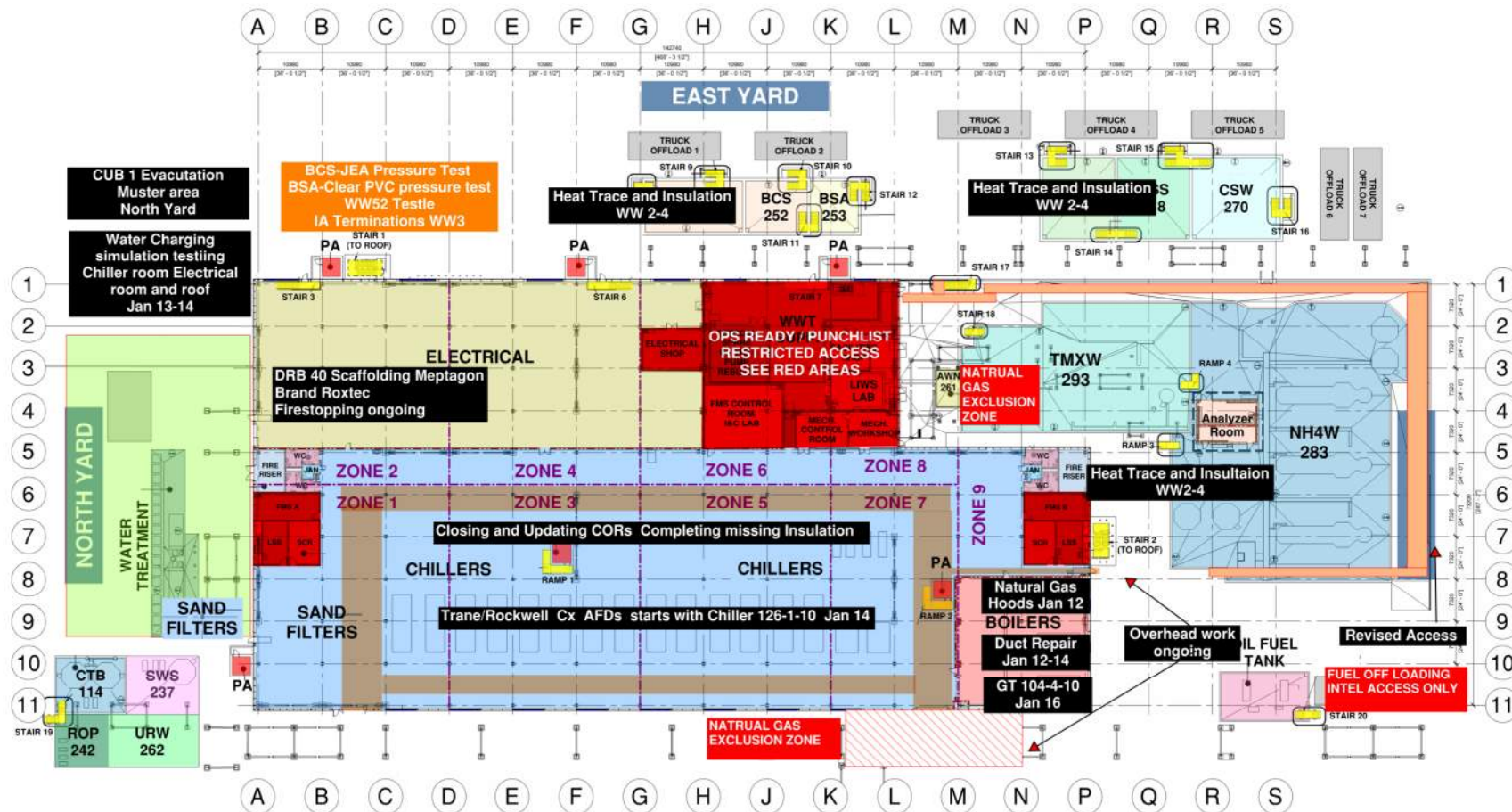
WJG UTILITY LEVEL BUILD OUT



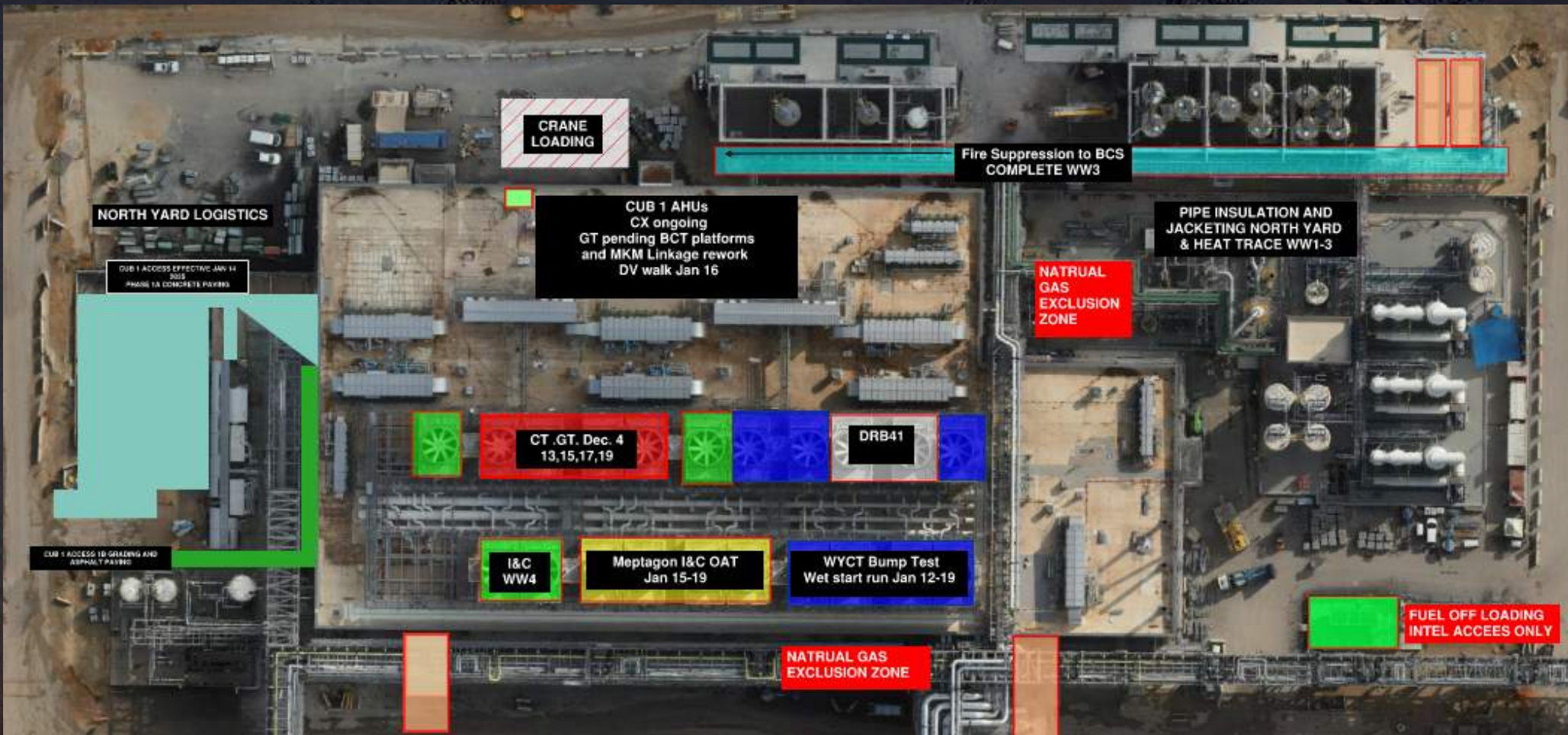


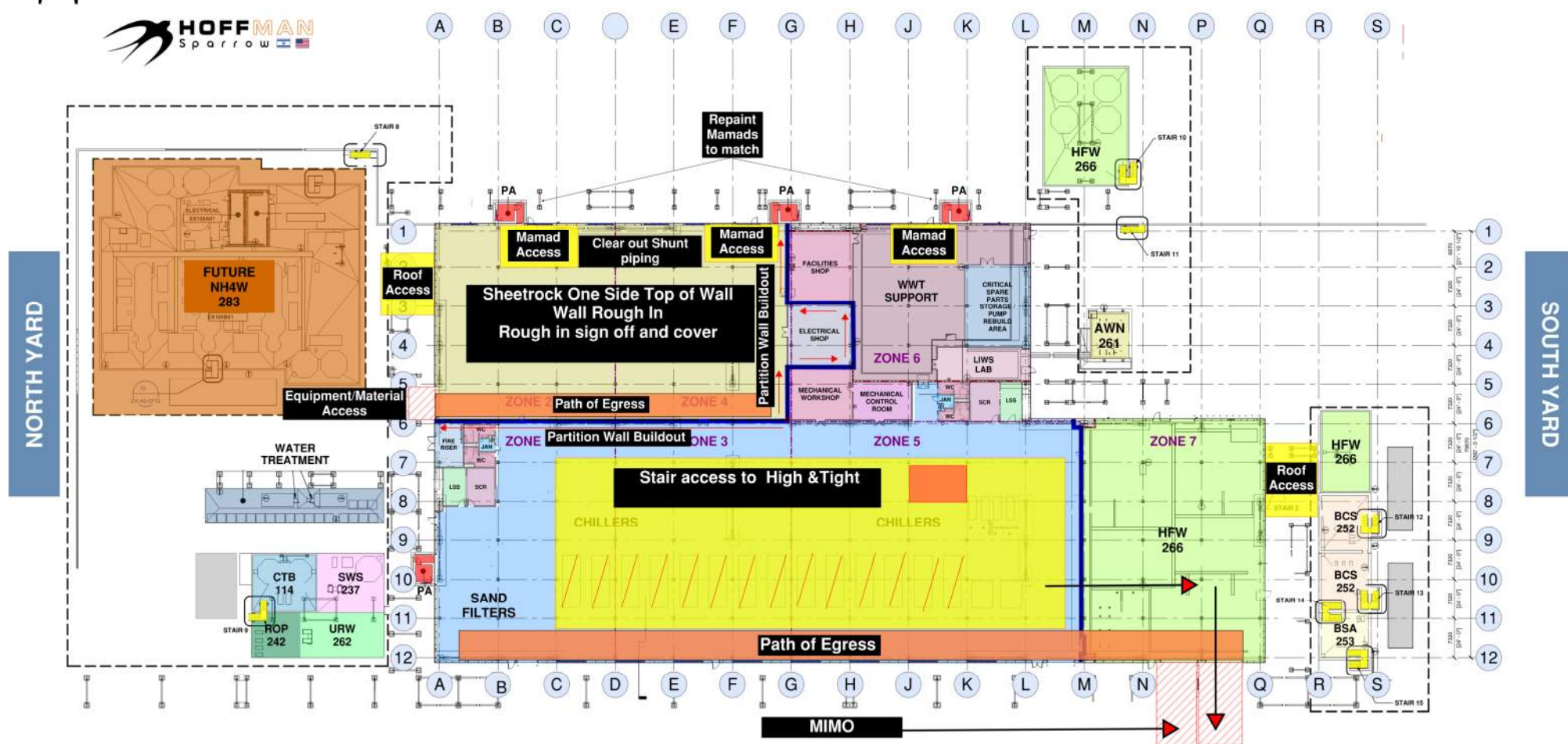
CUB 1

CUB COORDINATION MAP



CUB 1 – EXTERIOR/ROOF





CUB 2 – EXTERIOR/ROOF





HOFFMAN CONSTRUCTION COMPANY



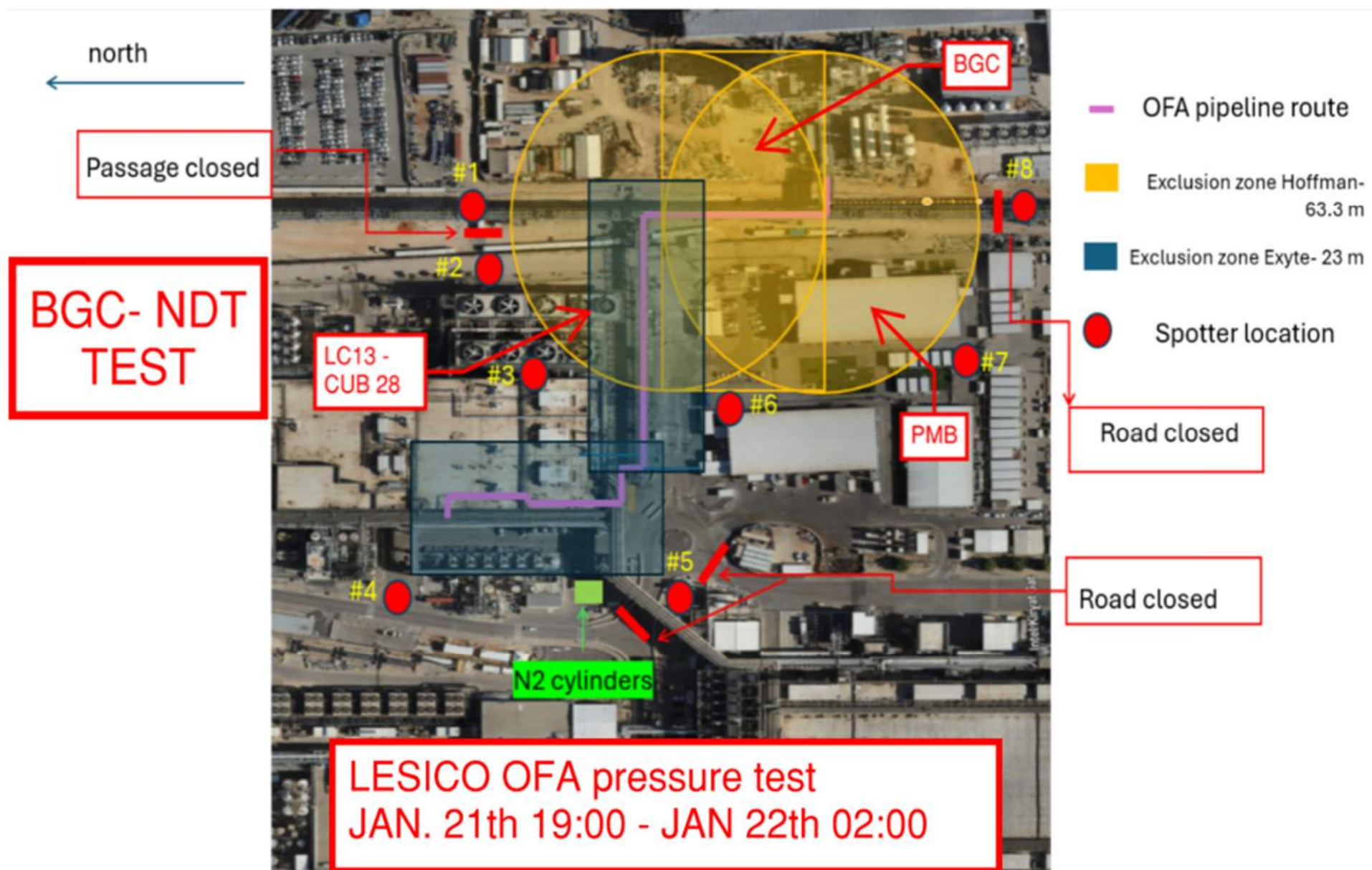


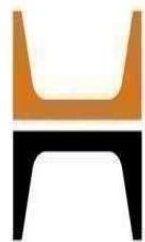
HOFFMAN CONSTRUCTION COMPANY



HOFFMAN

Sparrow

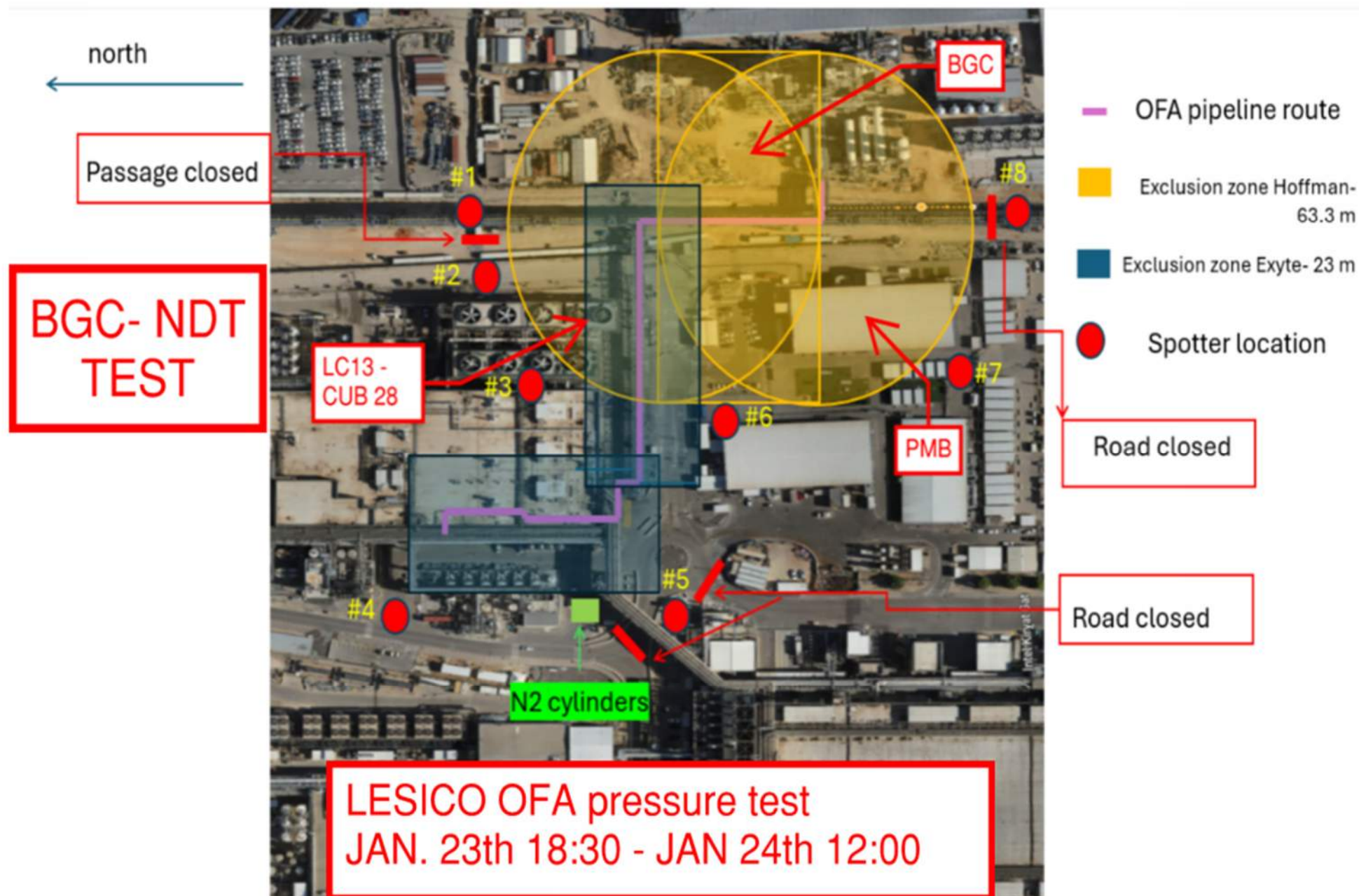




HOFFMAN CONSTRUCTION COMPANY



HOFFMAN
Sparrow





HOFFMAN CONSTRUCTION COMPANY



HOFFMAN
Sparrow  

MODULES IN FOR STORAGE

1 unit-Tue 21/1+1 unit-Wed 22/1
1 unit-sun 26/1+1 unit-Mon 27/1

GATE A

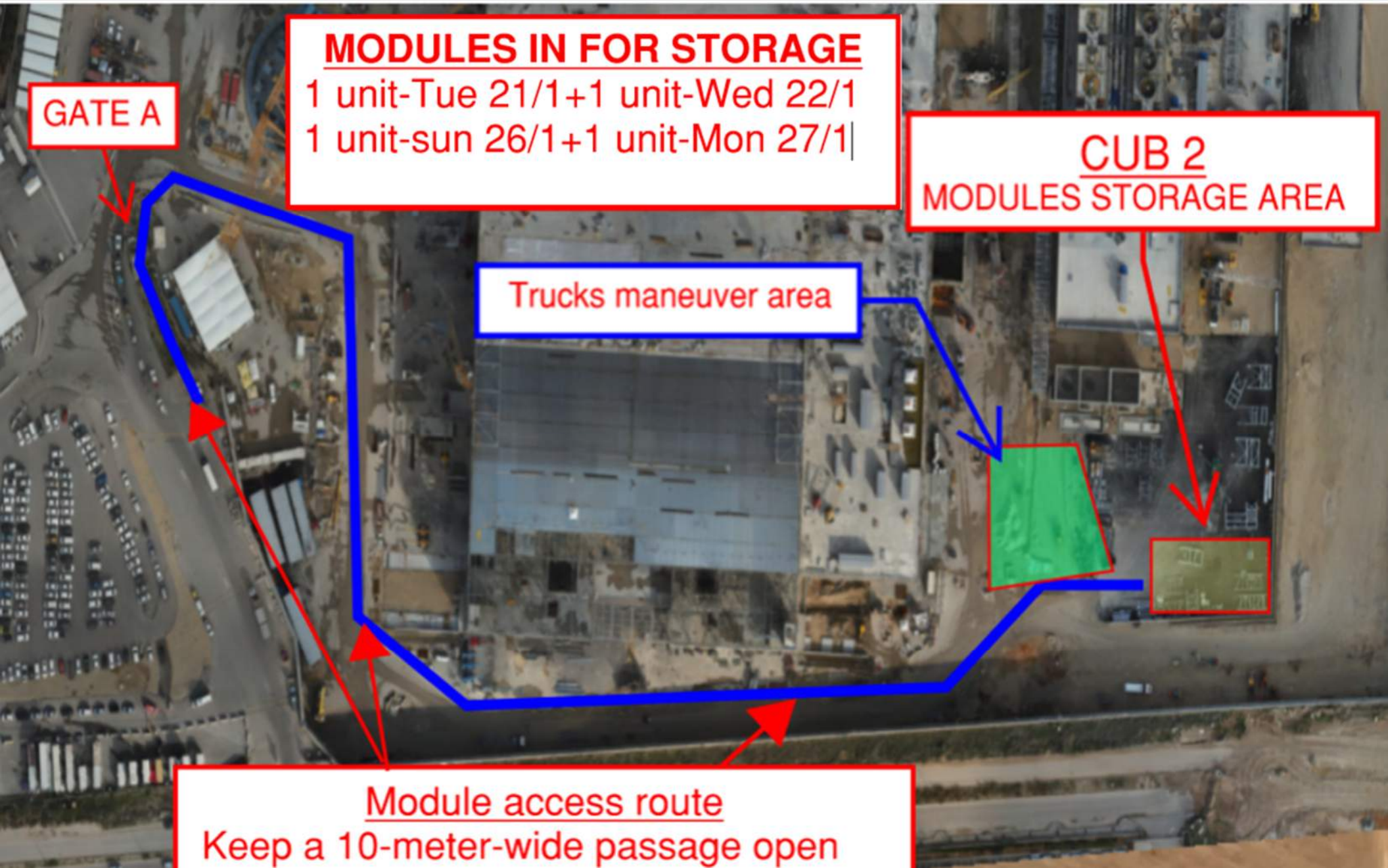
CUB 2

MODULES STORAGE AREA

Trucks maneuver area

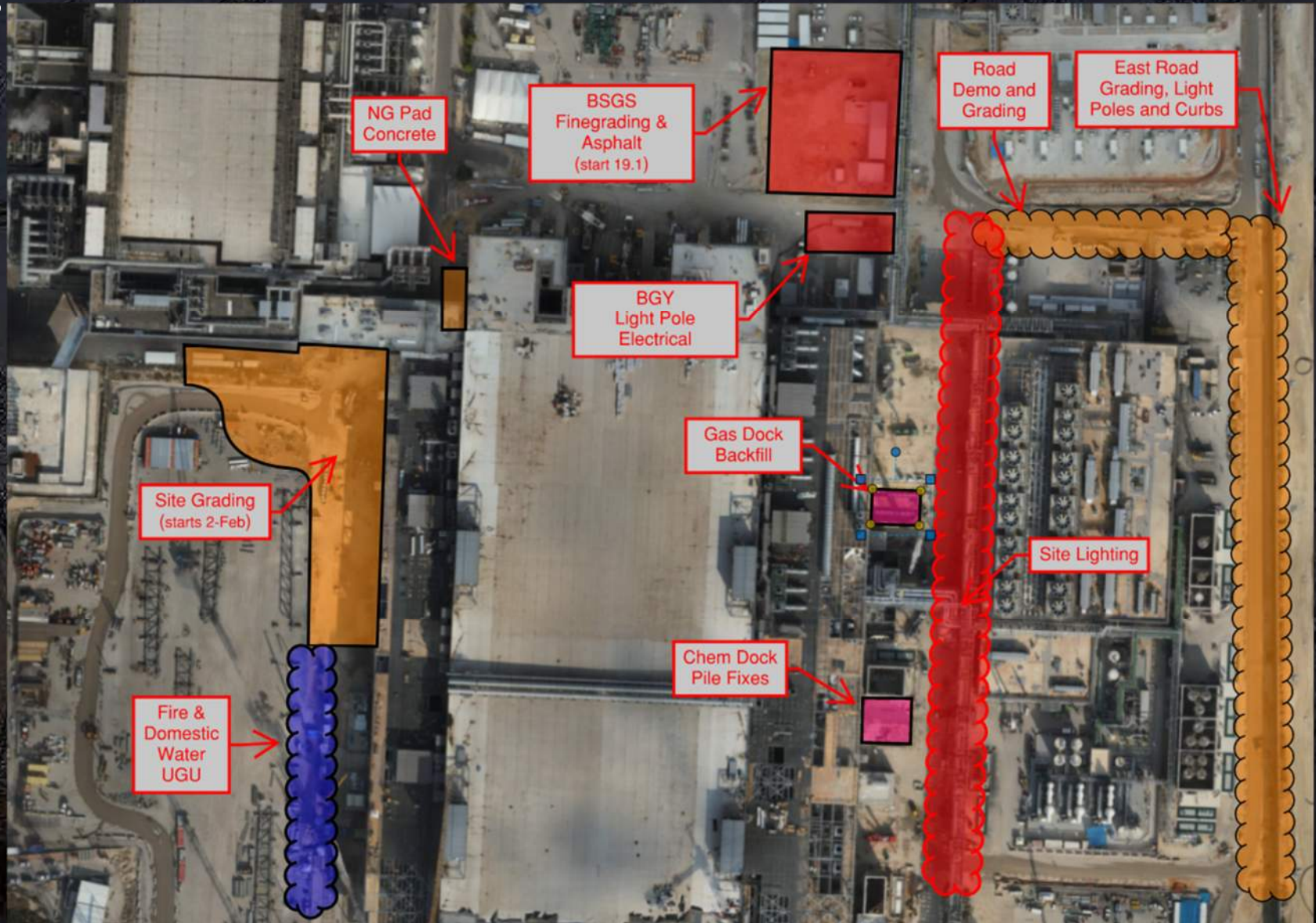
Module access route

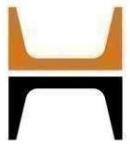
Keep a 10-meter-wide passage open



Daily Coordination Meeting

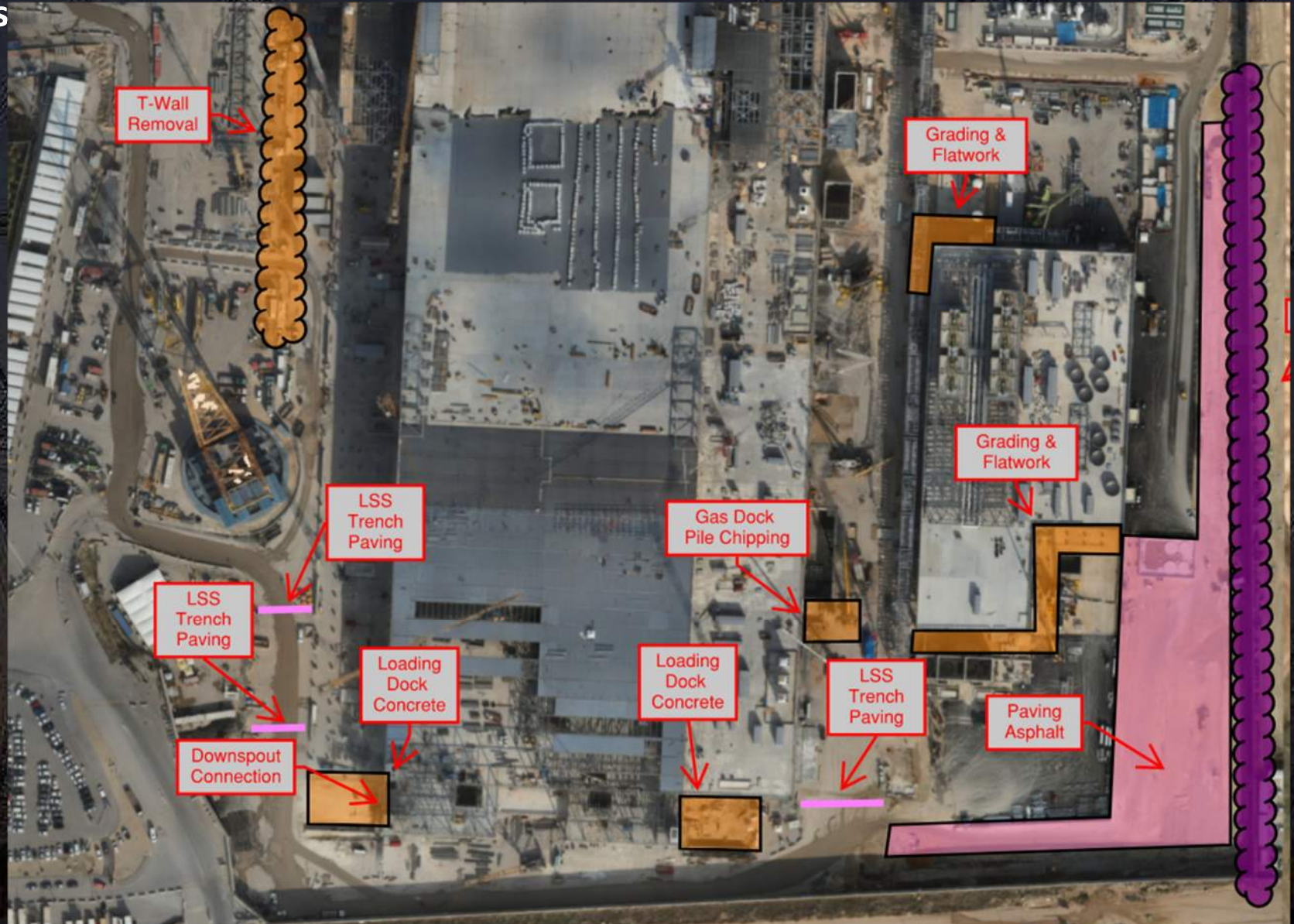
Site Logistics North

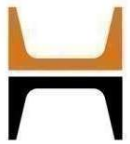




Daily Coordination Meeting

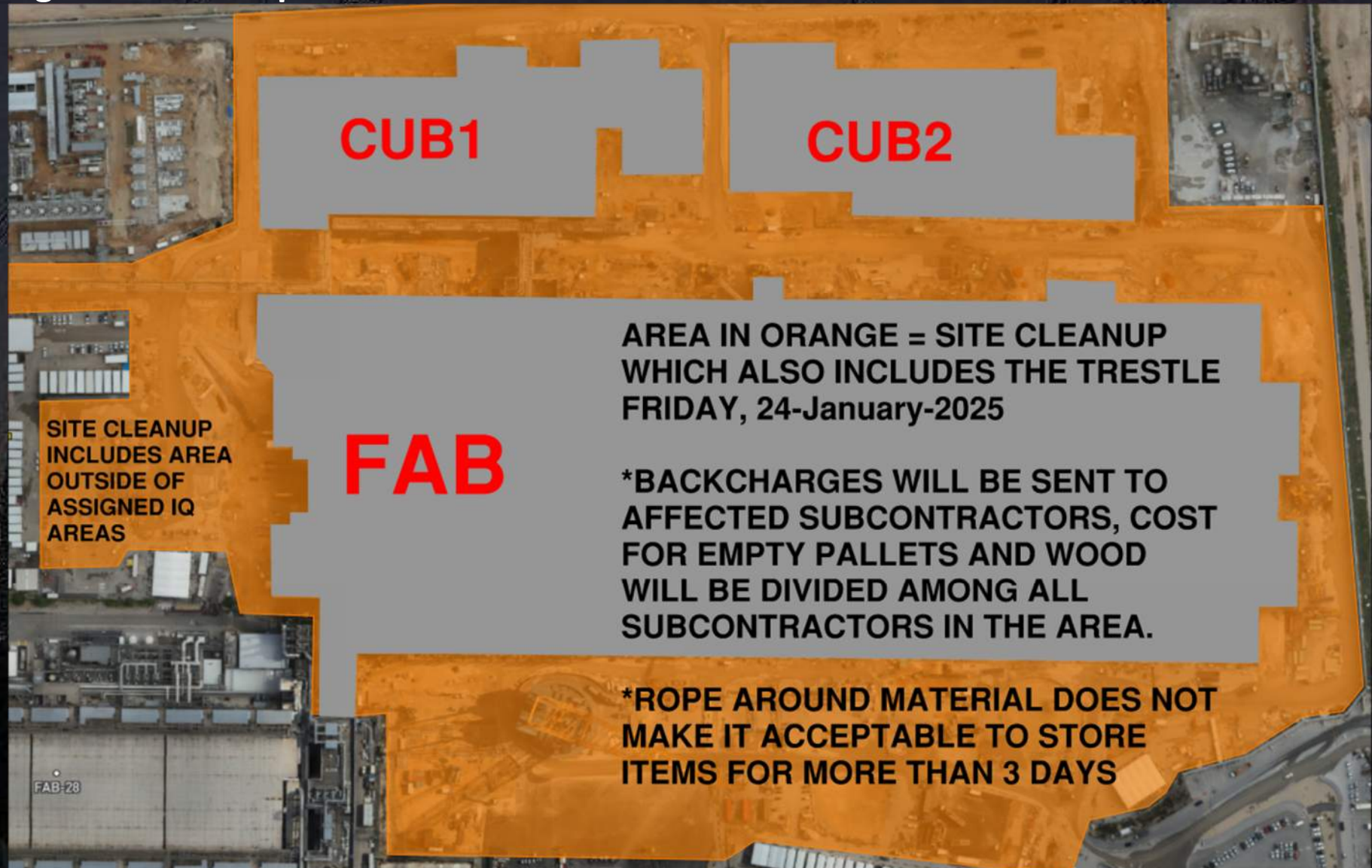
Site Logistics
South





Daily Coordination Meeting

Site Logistics - Cleanup



Area Assessments

- Area assessments are required prior to starting work, during our shift, and before we leave for the end of the day.
- Area assessments need to be complete and look for specific hazards or areas of concerns such as:
 - Falling hazards
 - Places that tools/materials can fall through
 - Tripping hazards
 - Obstructions (overhead and in the area)
 - Live systems
 - Other contractors' activities near by
 - Changes to the area from the previous day
 - Access and egress, and exit routes
 - Potential chemical hazards
 - Potential fire hazards
 - And anything else that can affect your work or harm you

Daily Coordination Meeting



14:00 Sign In