

Daily Coordination Meeting

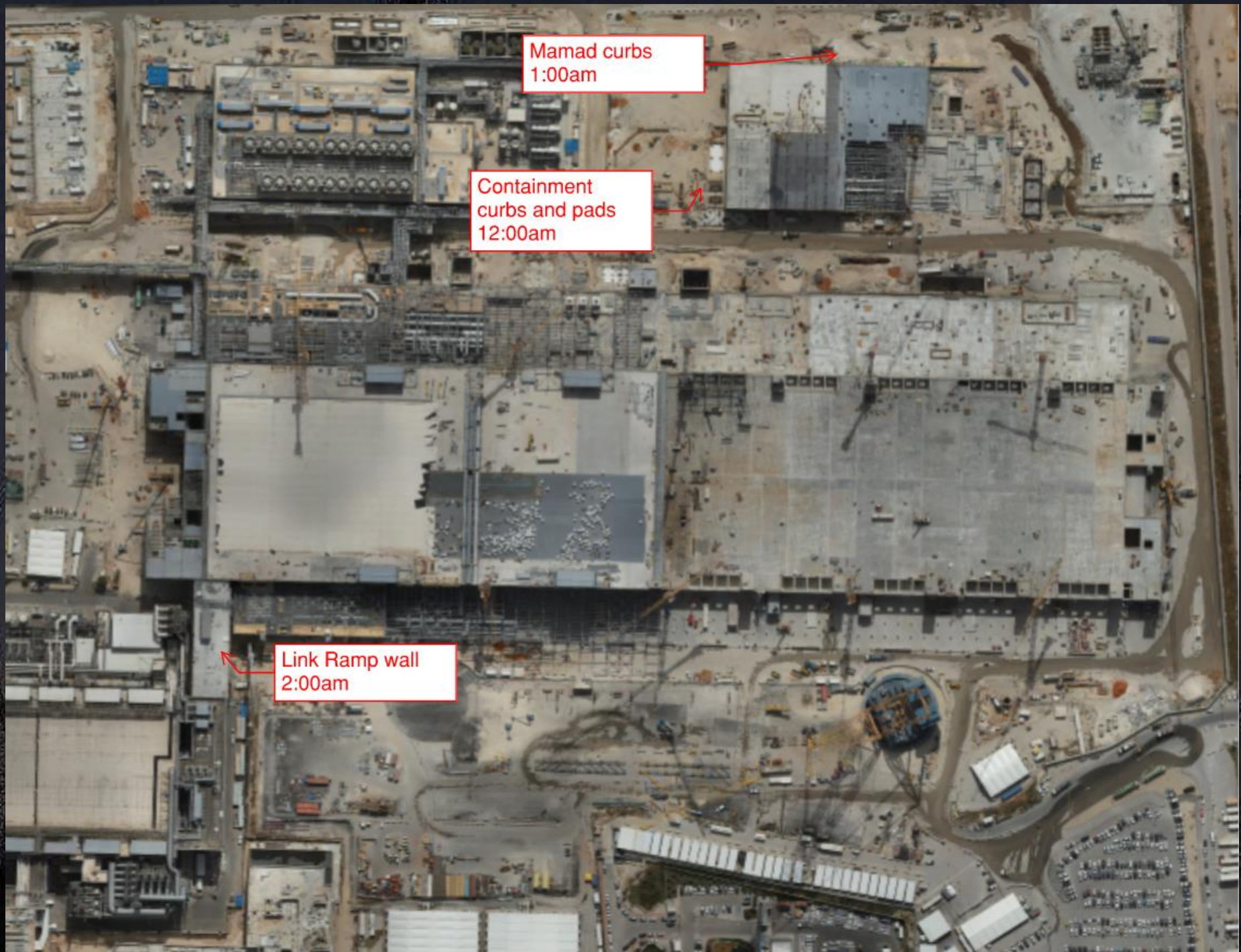


14:00 Sign In

Daily Coordination Meeting

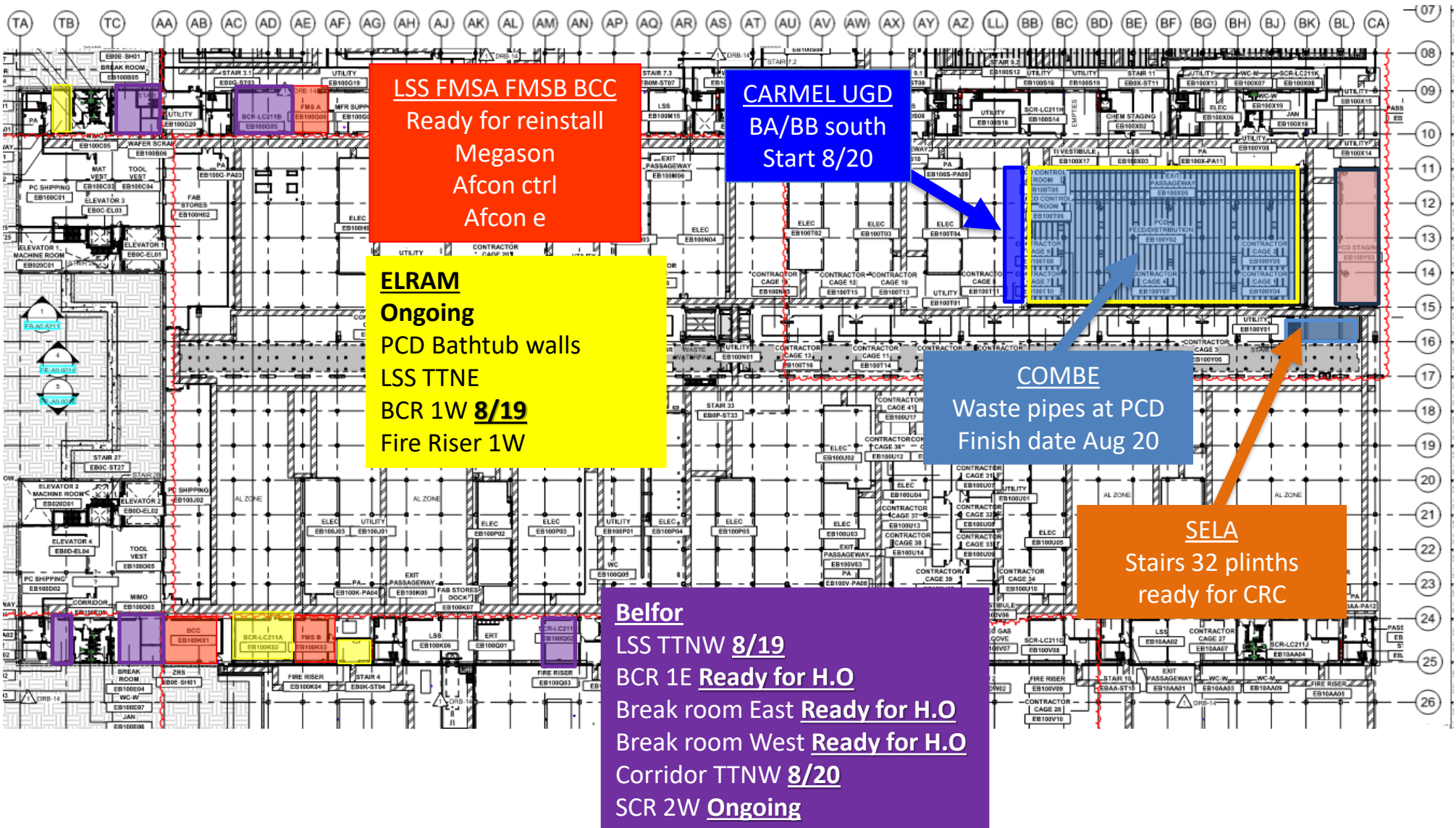
General Topics:

- Dropped objects- 2 in last 2 days

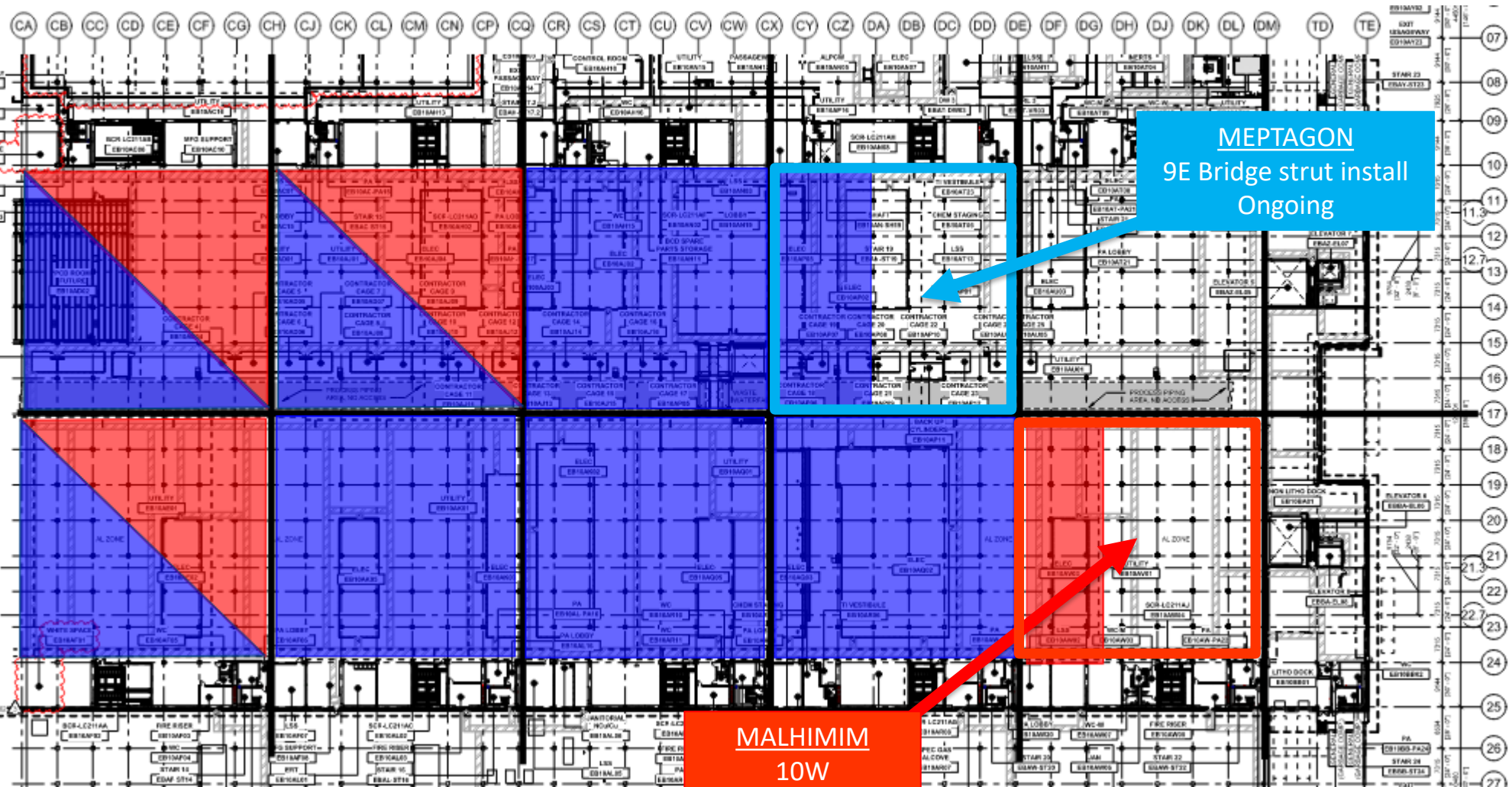


Concrete pours for tomorrow morning
8/21/24. Pour starts at 12:00am

UTILITY LEVEL MOD1



UTILITY LEVEL MOD2

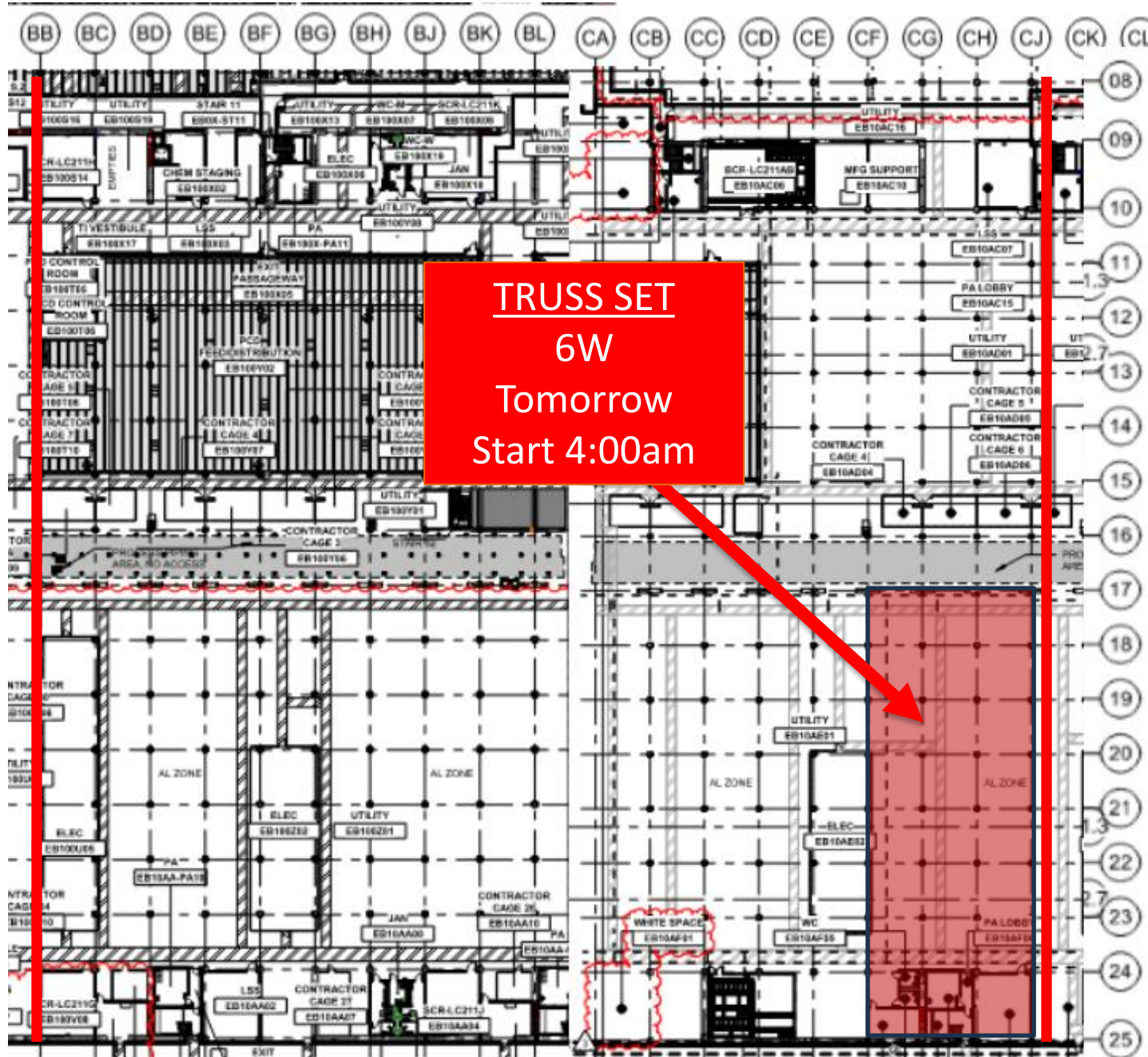


MEPTAGON
9E Bridge strut install
Ongoing

MALHIMIM
10W
Sprinklers install

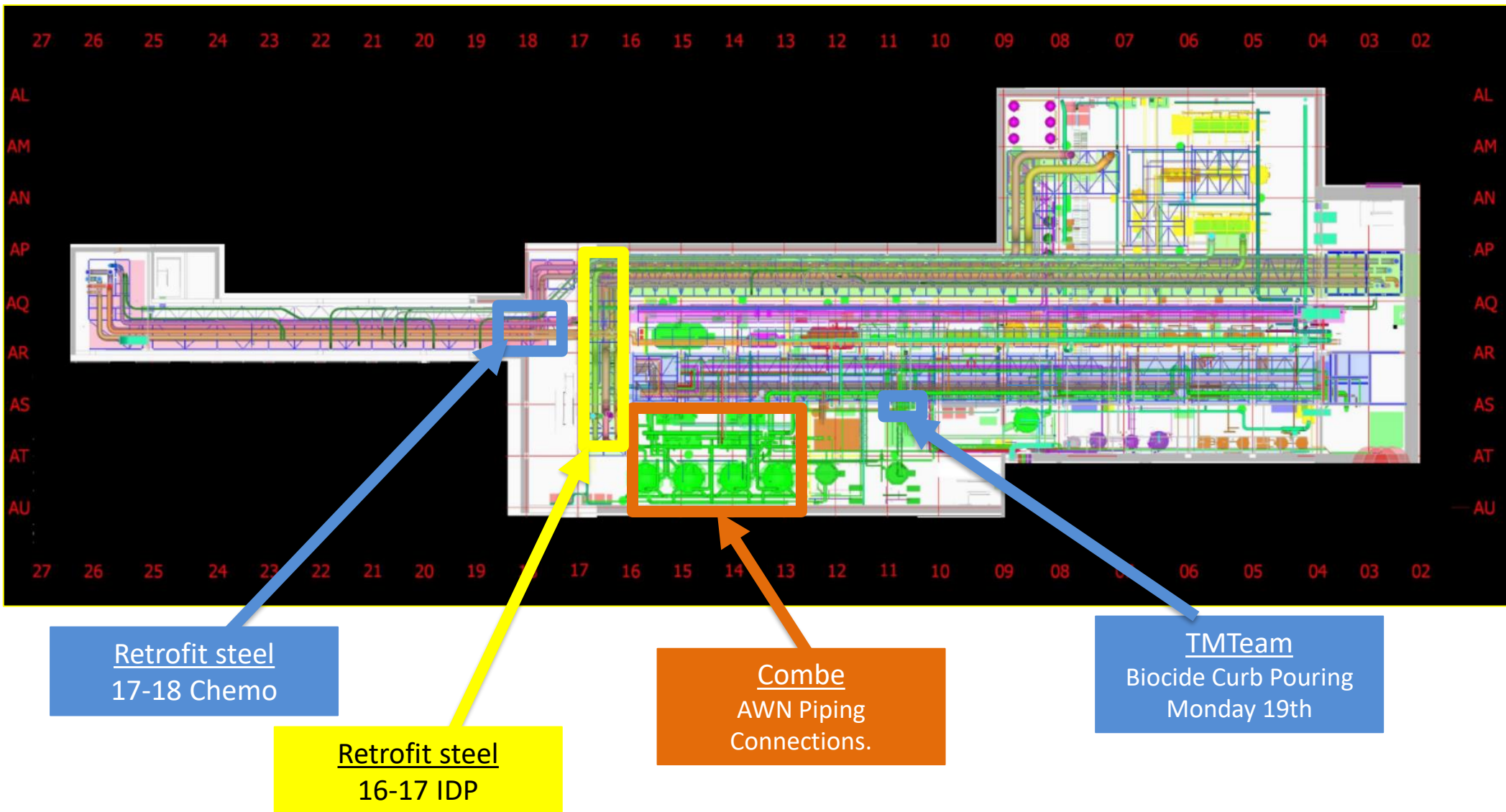


UTILITY LEVEL MOD2



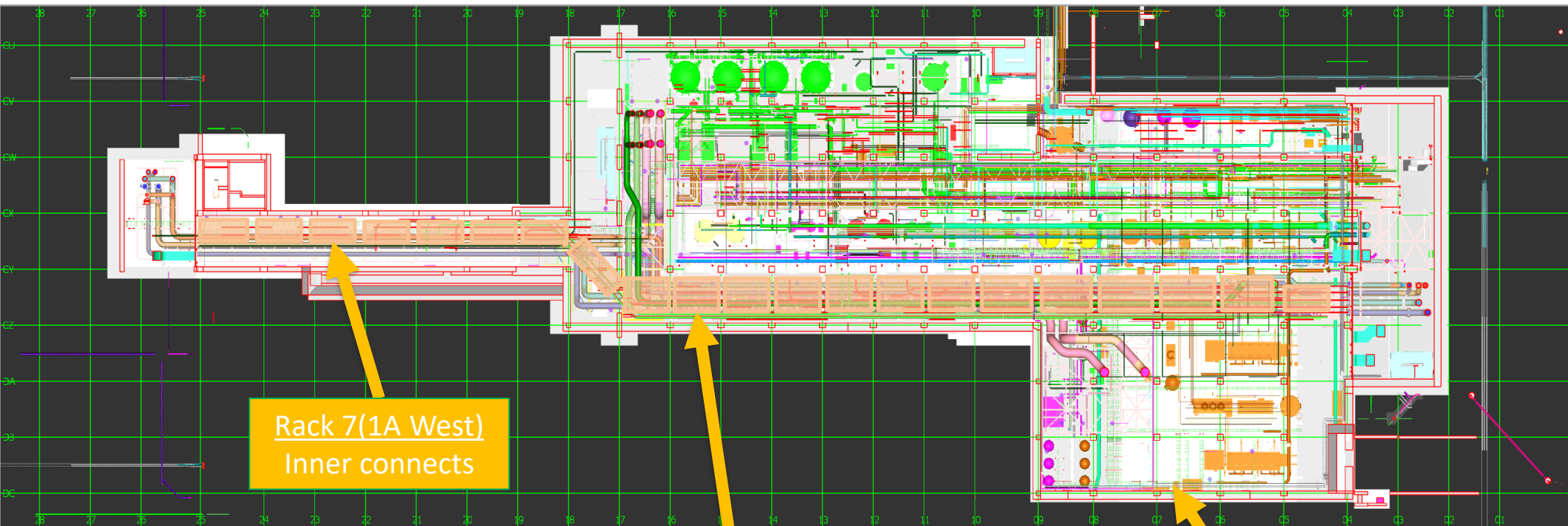


SUT 38.1 LEVEL





SUT 38.2 LEVEL



Rack 7(1A West)
Inner connects

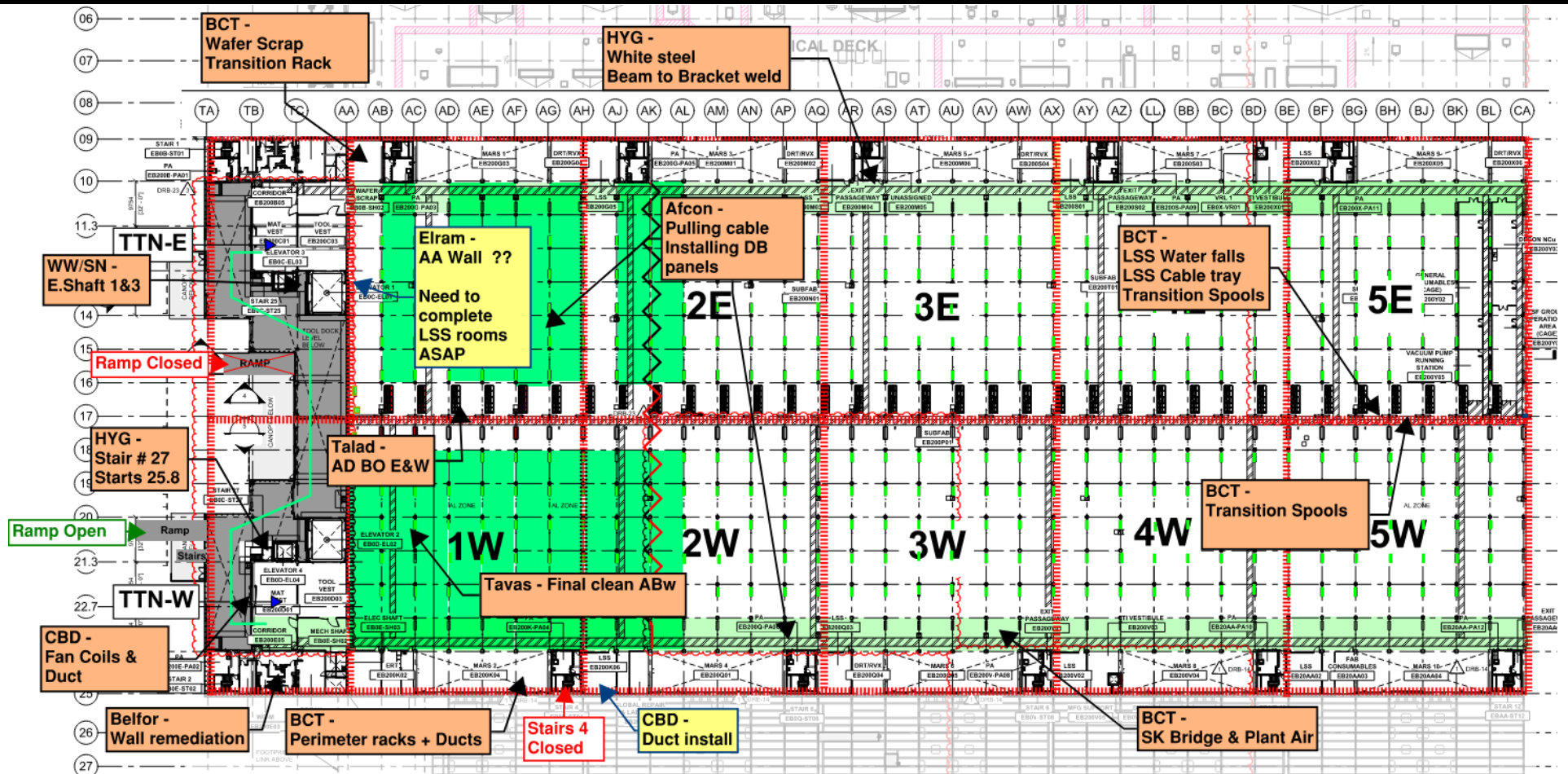
CRW
H&T
Need to be installed

1A Rack
Inner connects

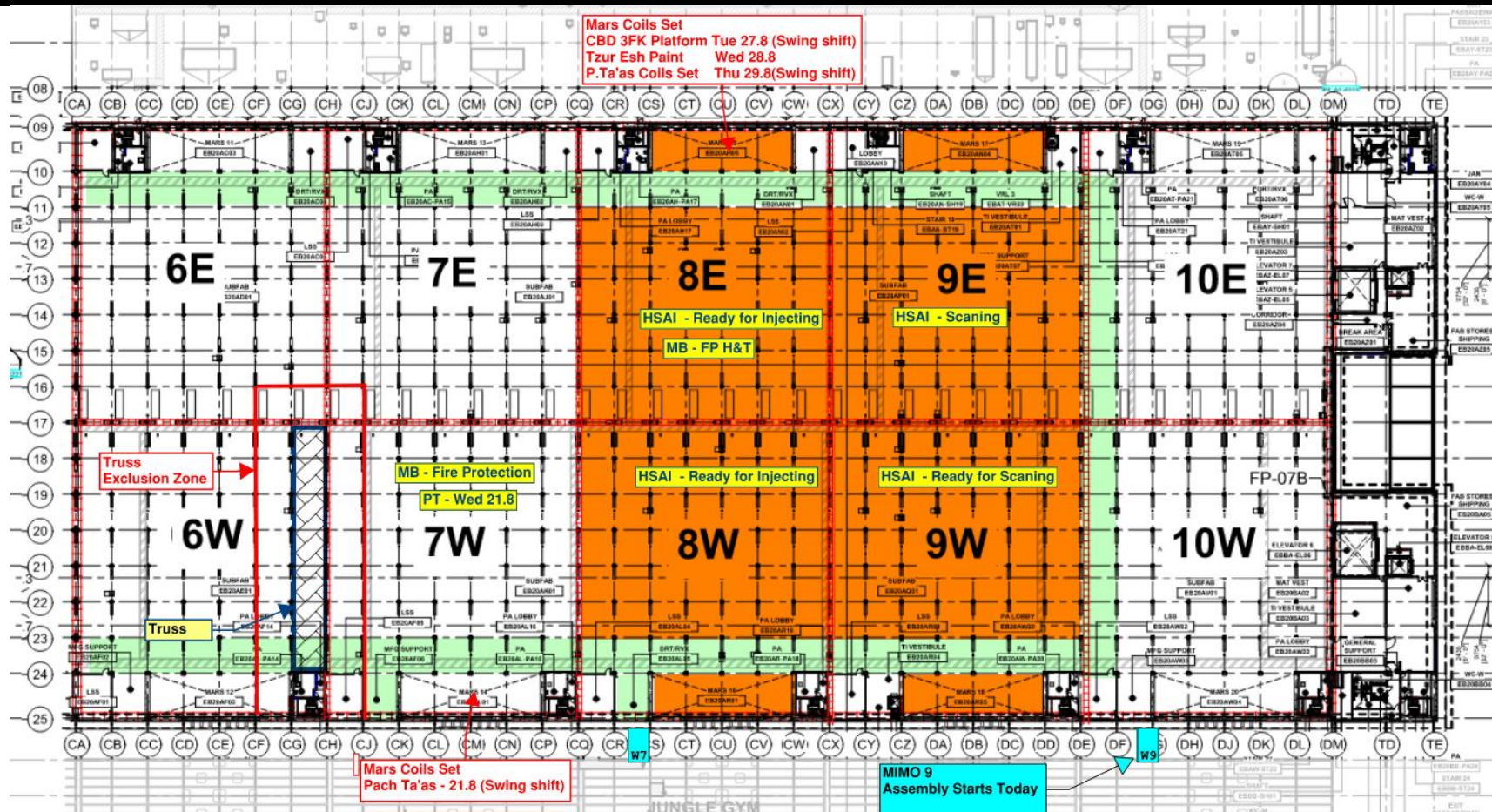
8 Rack
Lifting

Vesda
H&T
Not actively installing

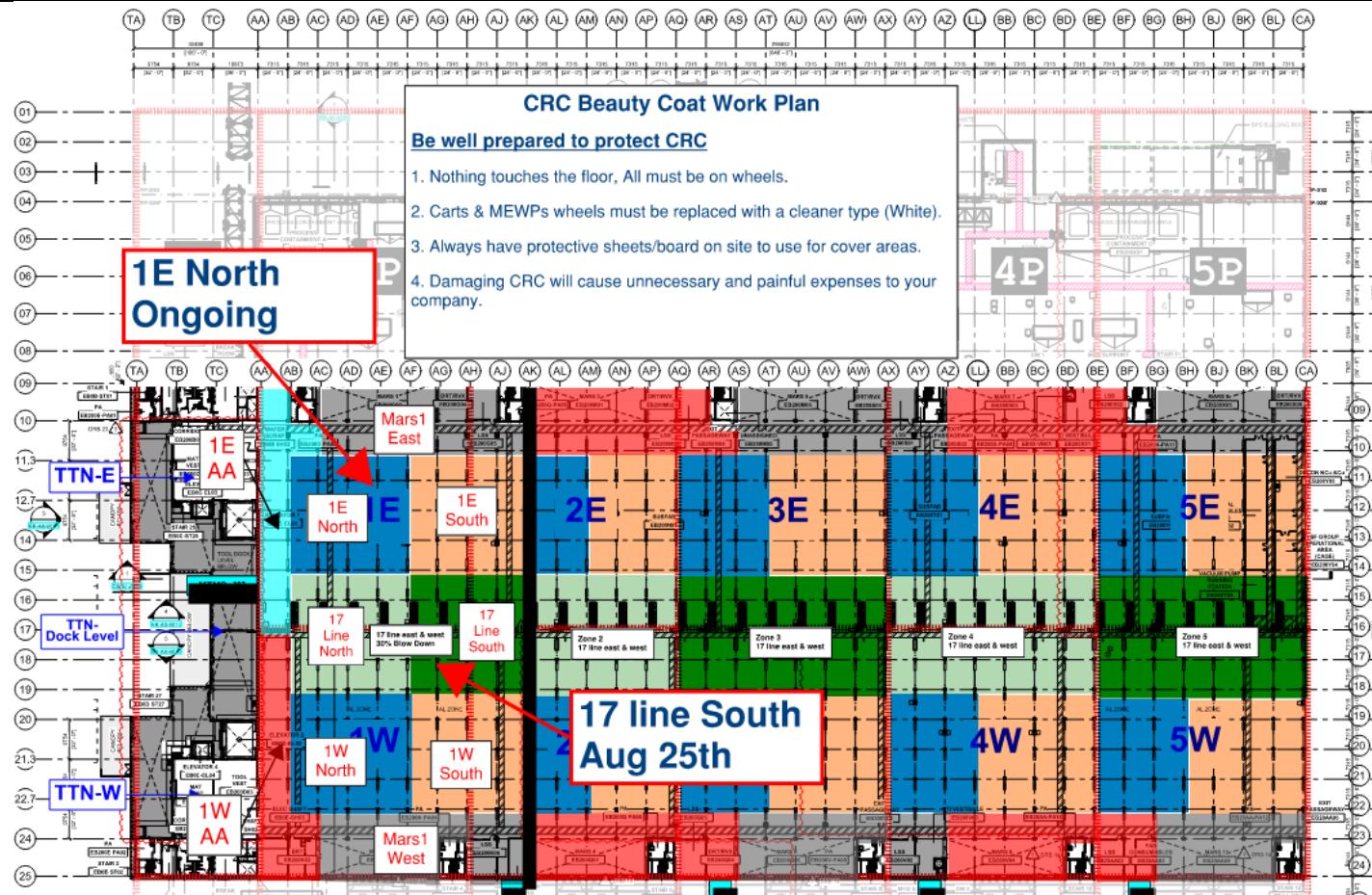
SUBFAB BUILDOUT MOD 1

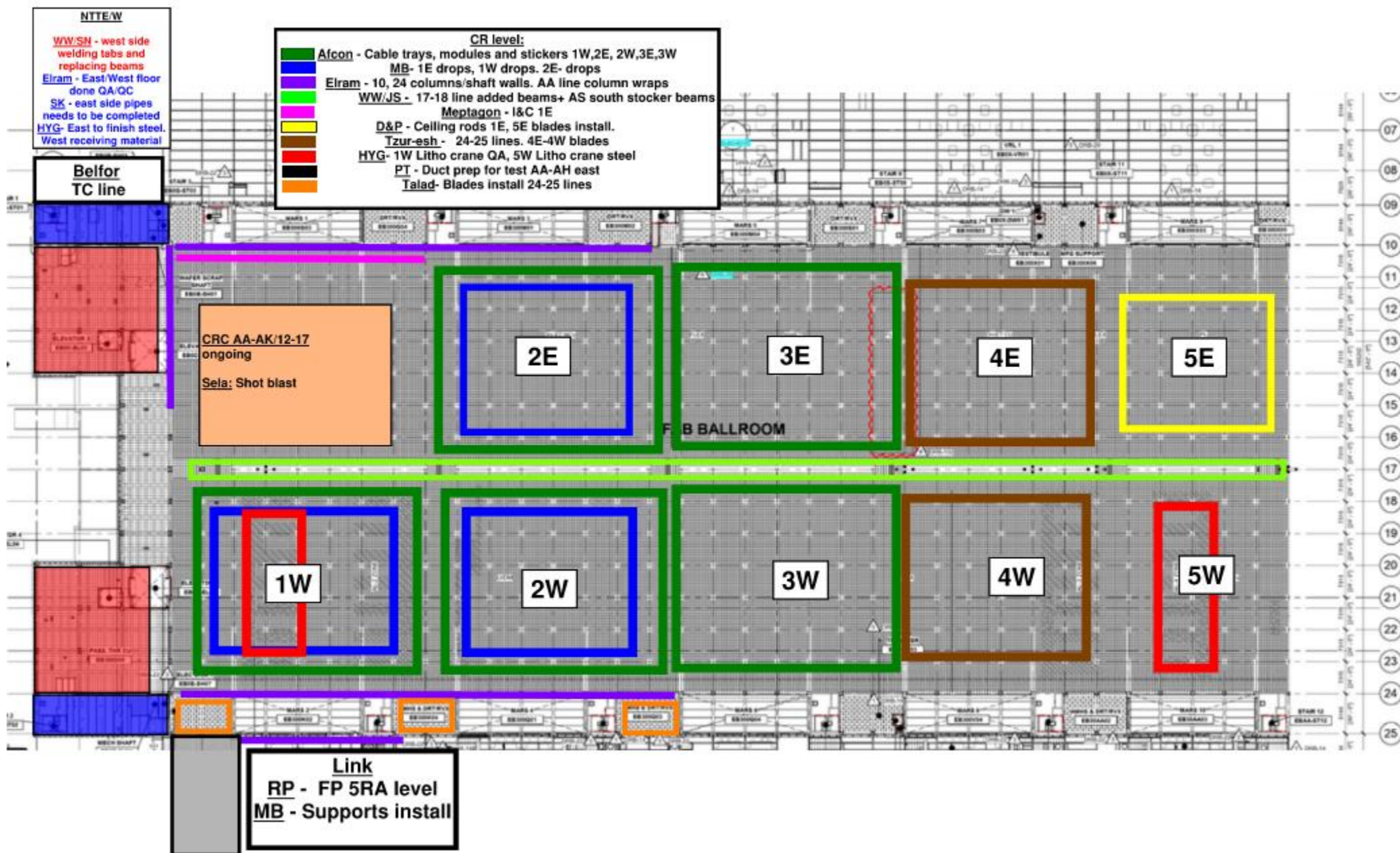


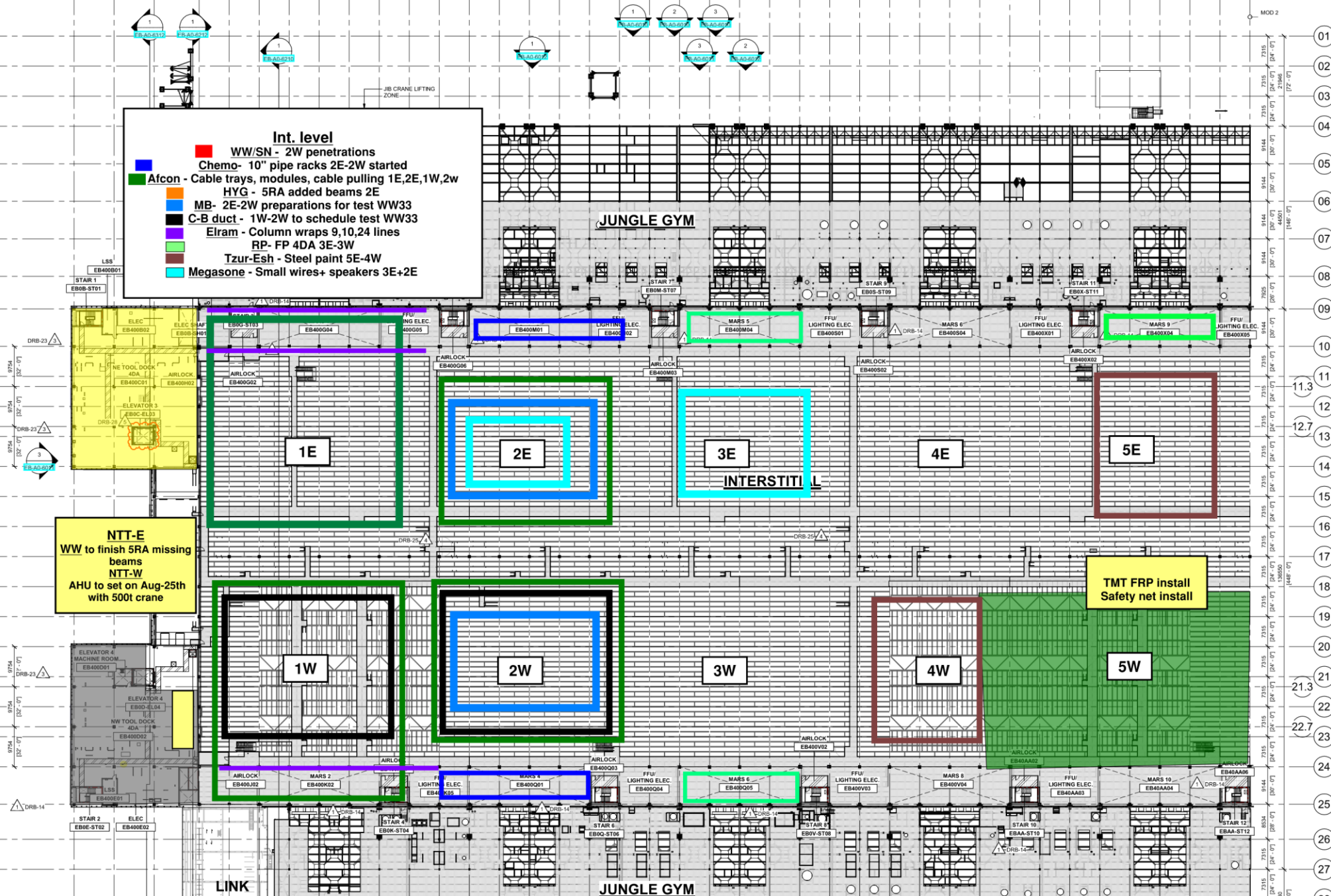
SUBFAB BUILDOUT MOD 2



SUBFAB CRC TOPCOAT



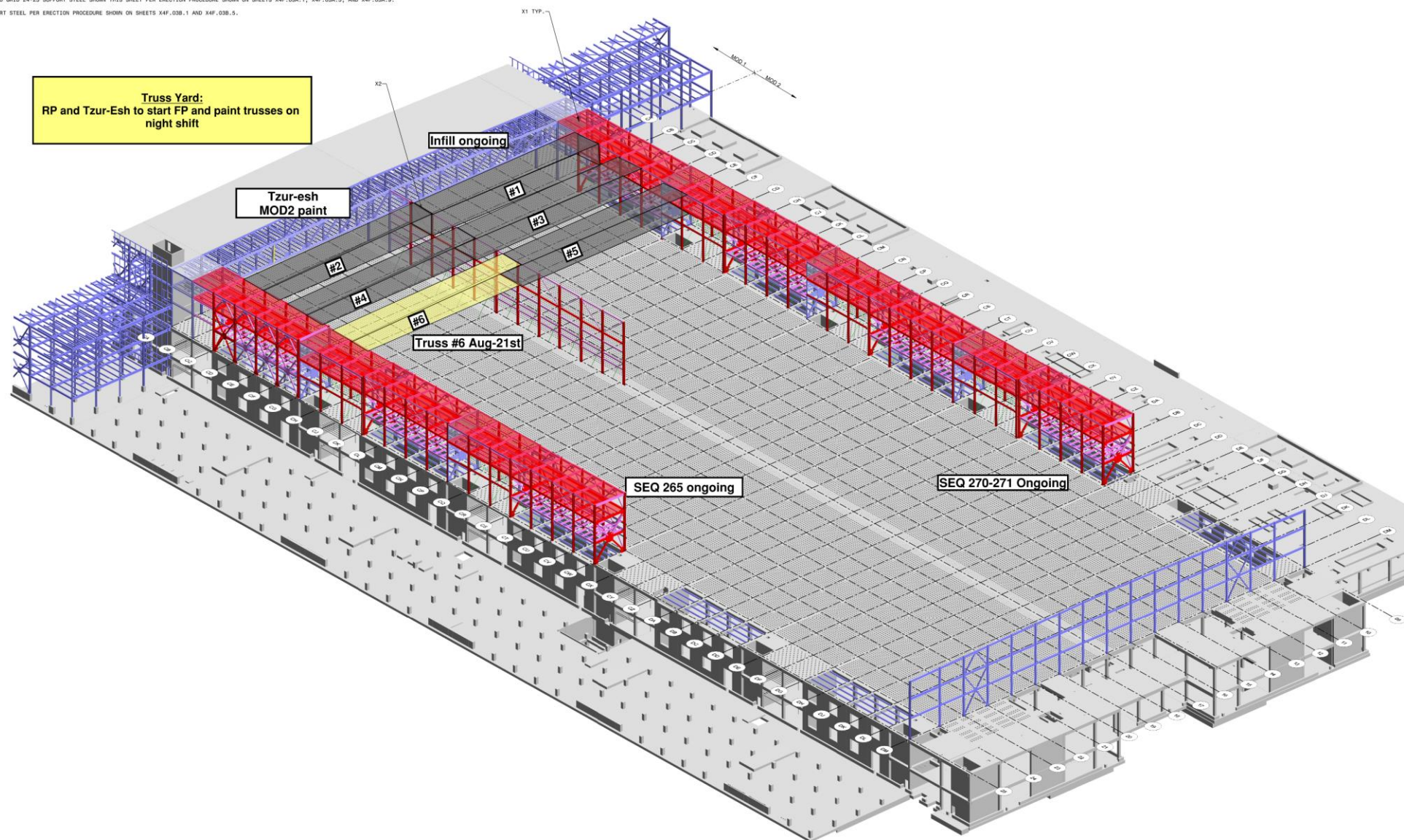


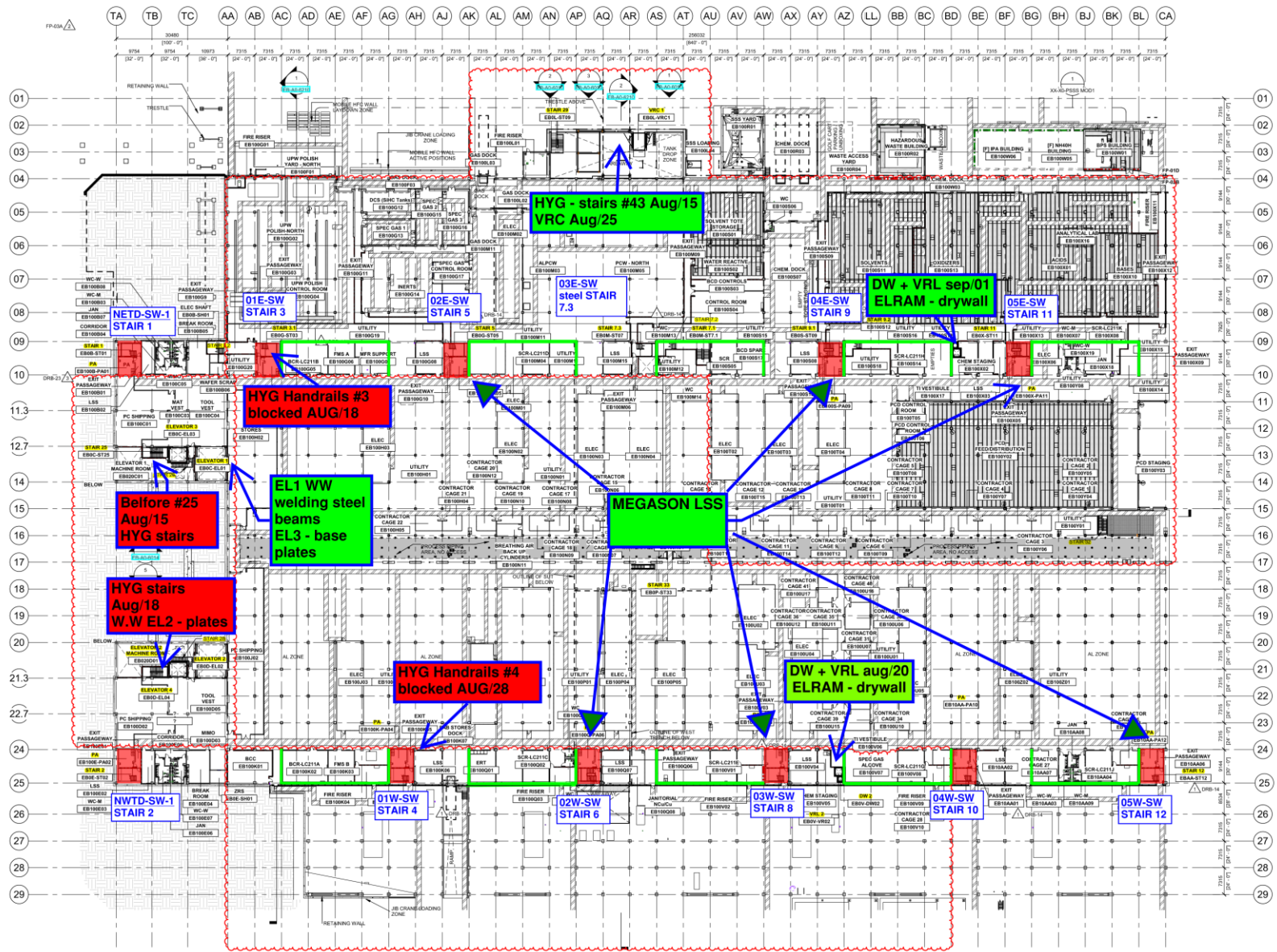


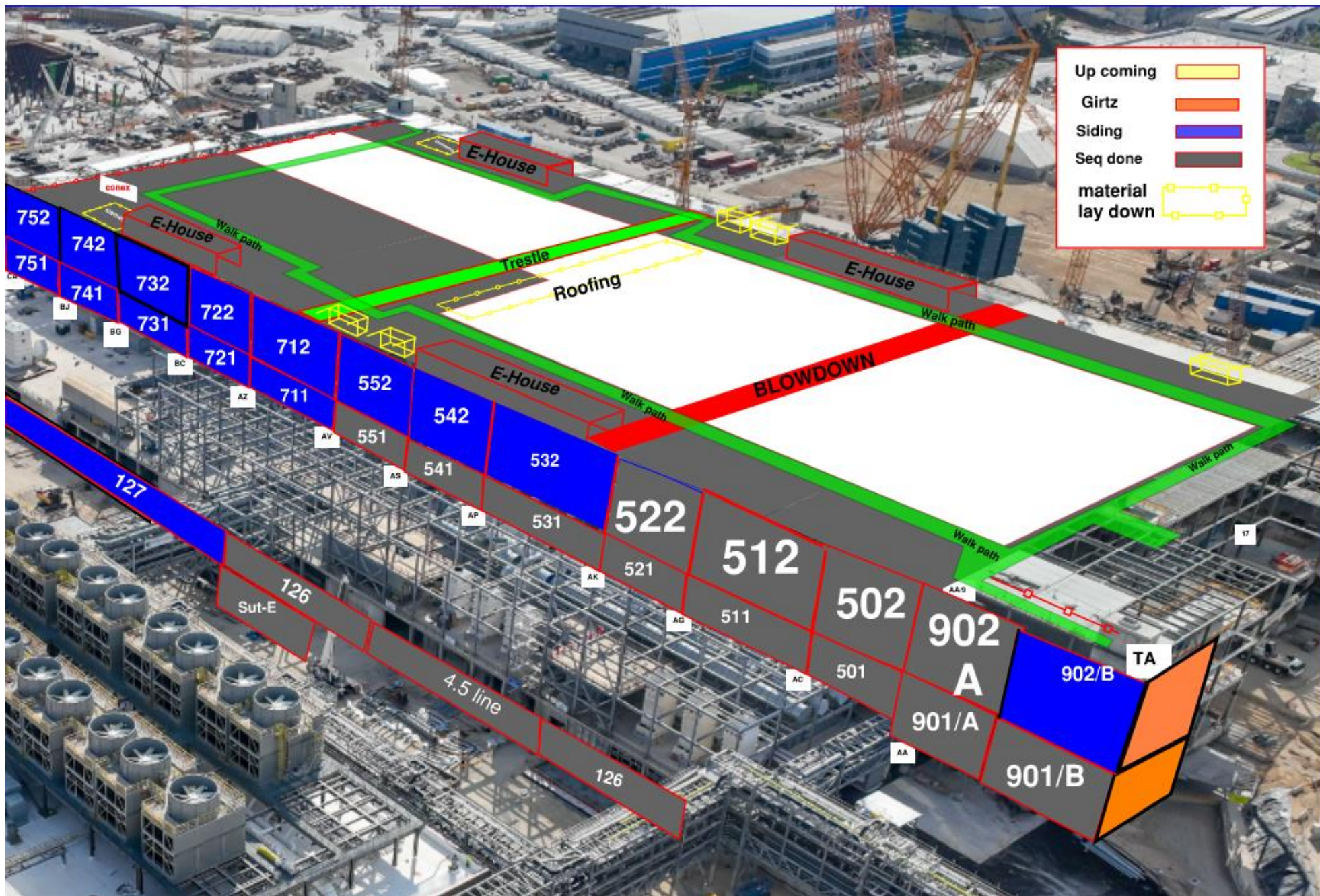


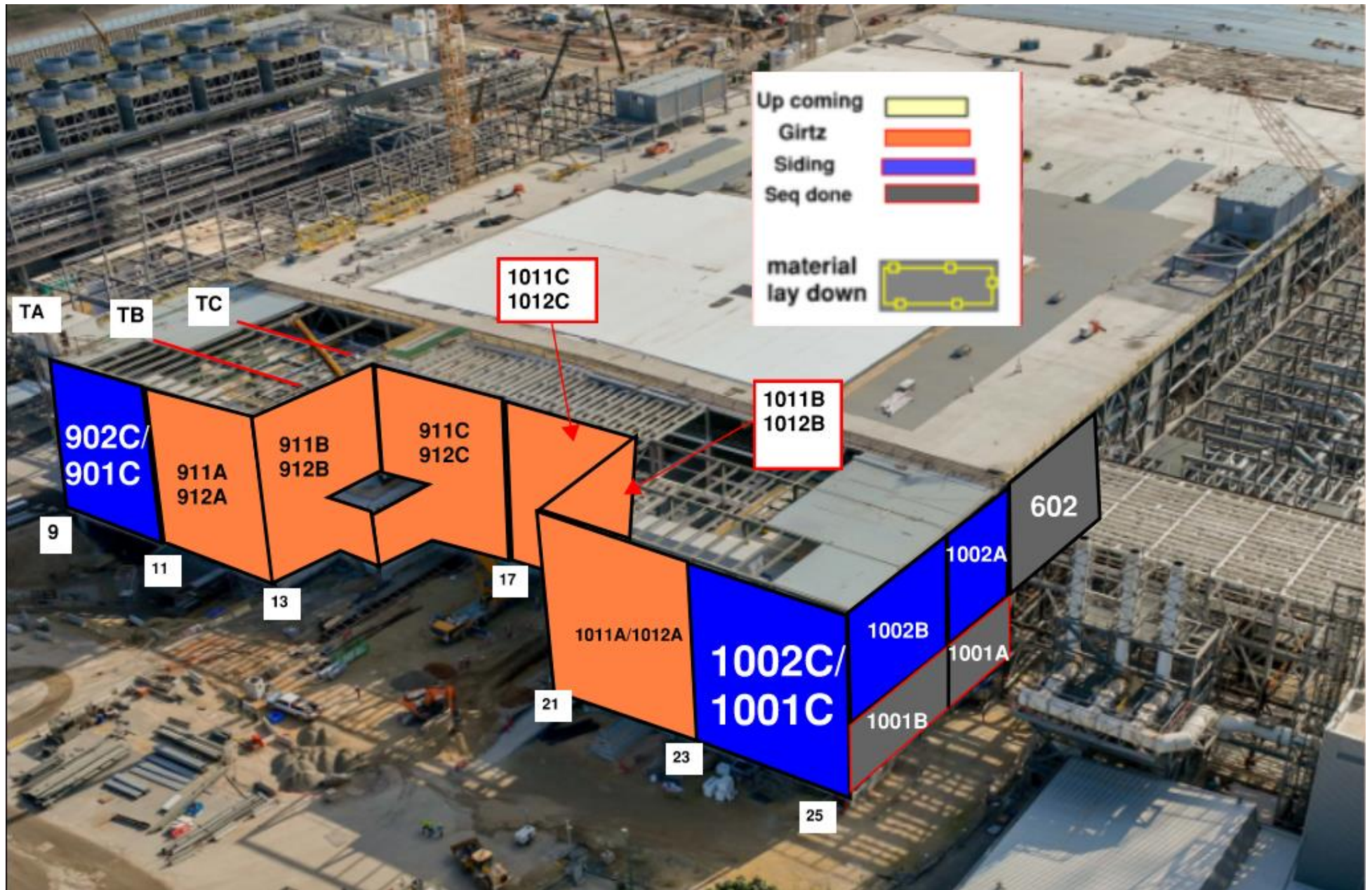
ENTIRE SHEET UPDATED FOR GEN. REV. 2 ISSUE

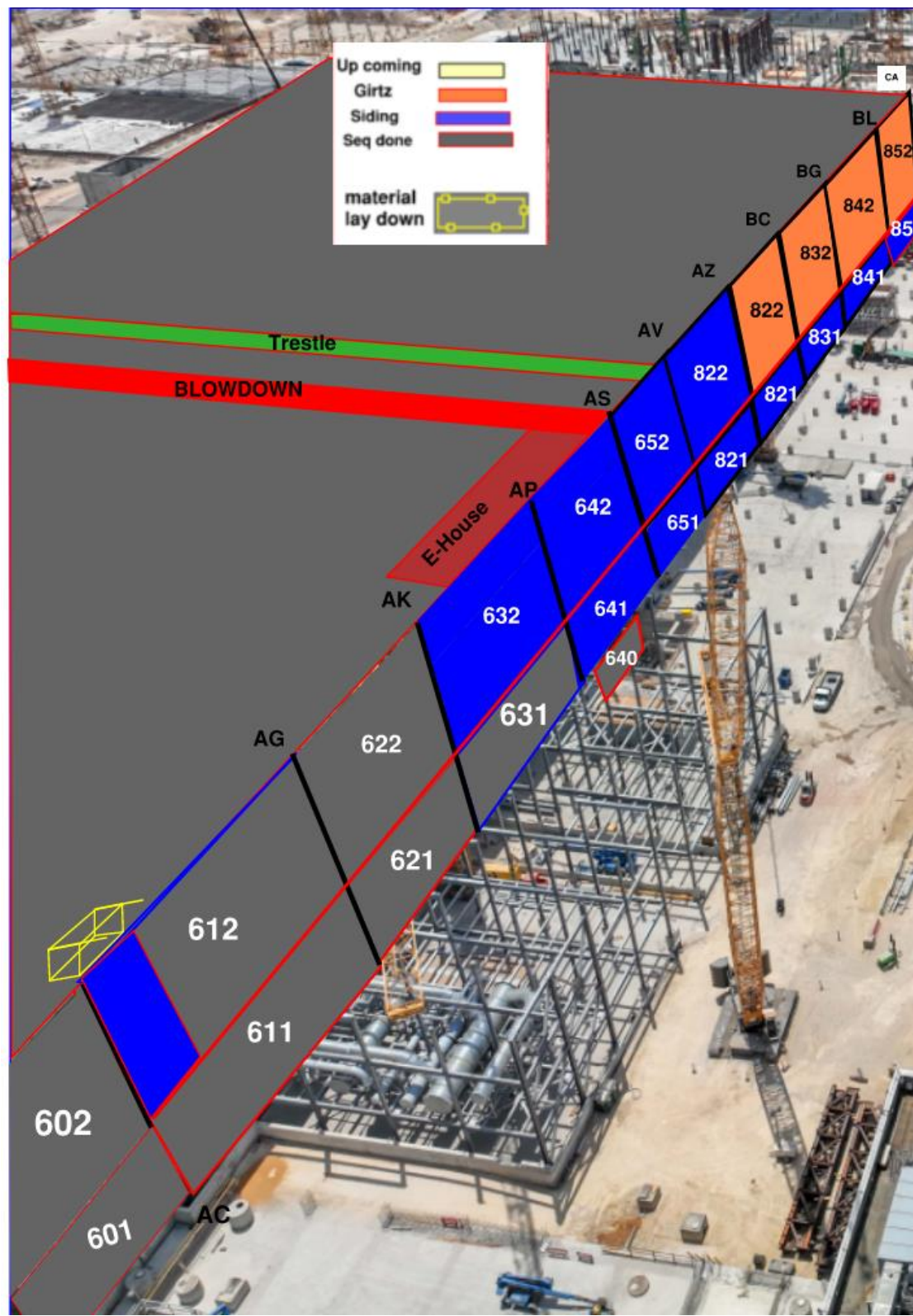
X1. ERECT GRID 09-10 AND GRID 24-25 SUPPORT STEEL SHOWN THIS SHEET PER ERECTION PROCEDURE SHOWN ON SHEETS X4F.03A.1, X4F.03A.5, AND X4F.03A.9.







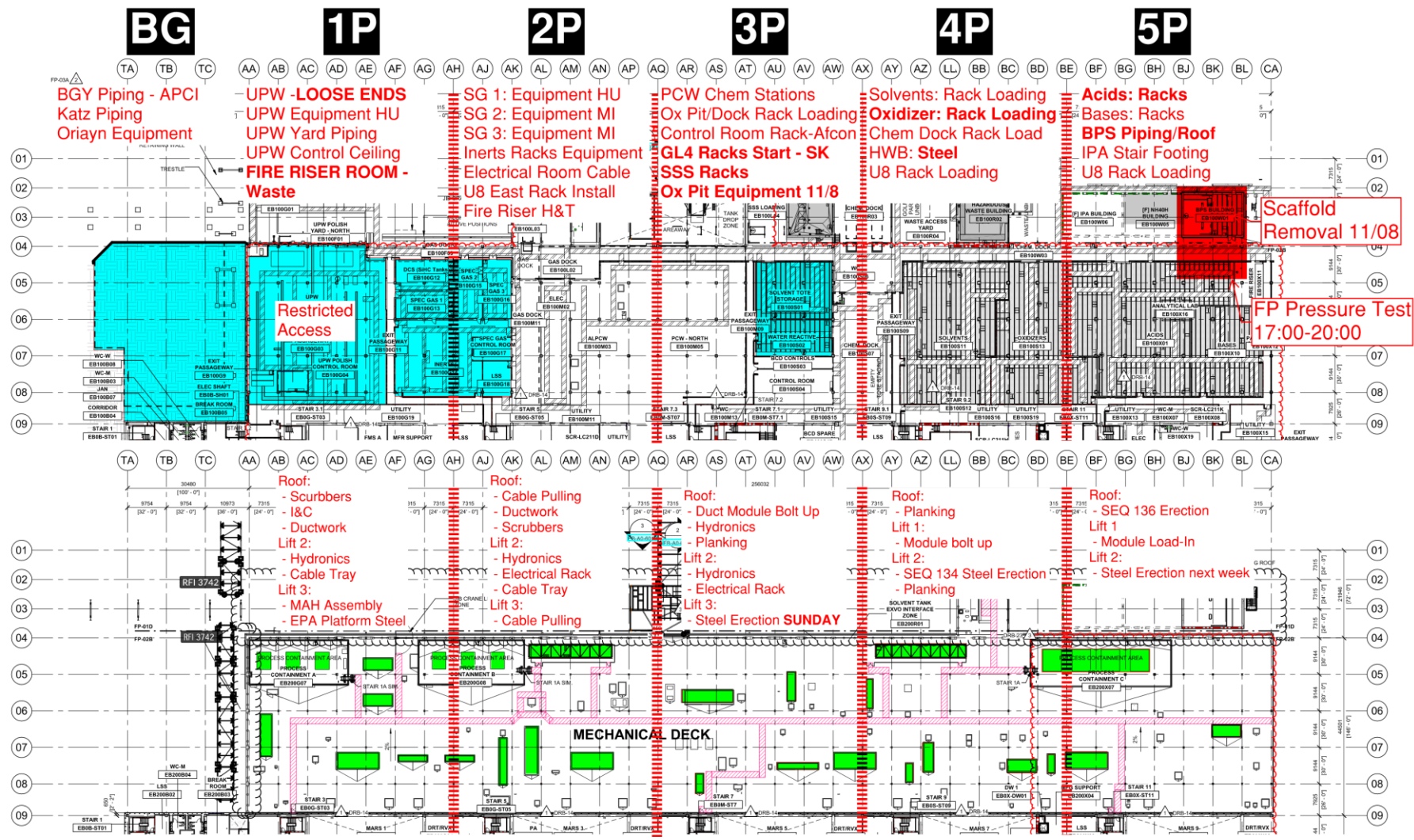





PSSS.1

Utility Level
1YA

PSSS Roof
2SA





PSSS P1
PachTaas Operation
Plates: 15-08-2024
Air Blower: 20-08-2024
EPA Platform: 26-08-2024

Single
EPA Platform

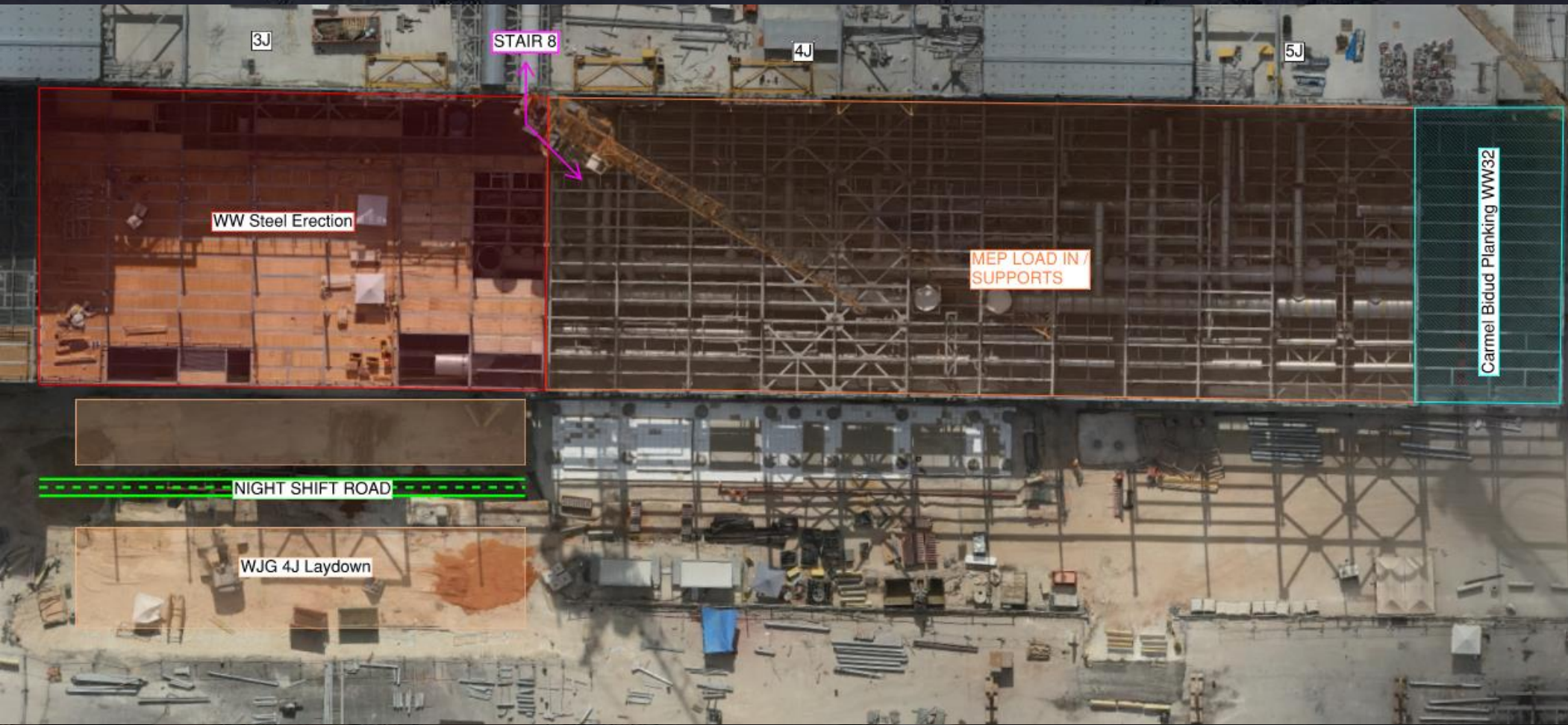
Fan



WJG 01J, 02J LIFT 2 & 3

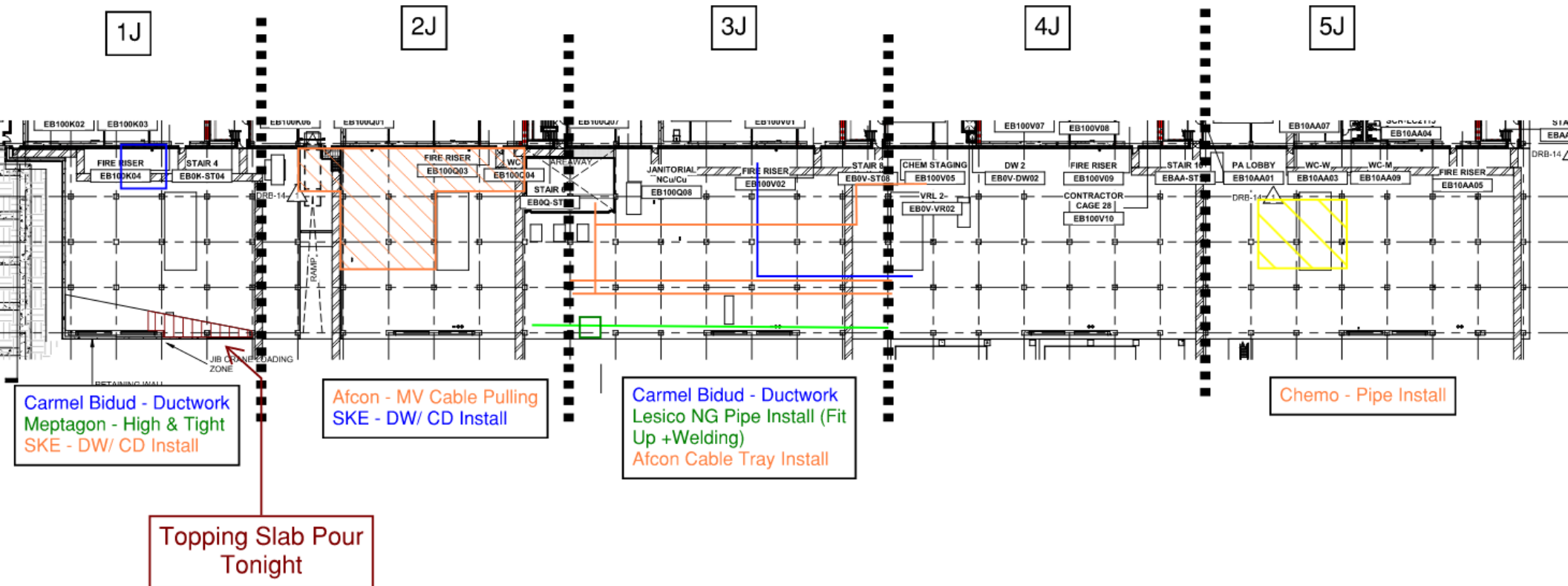


WJG 03J, 04J, 05J LIFT 2 & 3





WJG UTILITY LEVEL BUILD OUT





CUB 1

EAST YARD

TRUCK OFFLOAD 1

TRUCK OFFLOAD 2

TRUCK OFFLOAD 3

TRUCK OFFLOAD 4

TRUCK OFFLOAD 5

STAIR 8

STAIR 9

STAIR 10

STAIR 12

STAIR 13

STAIR 14

STAIR 15

STAIR 16

BCS BCS BSA

Build access to BCS Cneter and North

GSW

OSS

CSW

QC and Punchlist in Task Force

STAIR 1 (TO ROOF)

PA

PA

PA

Fire Suppression Testing Aug. 20

WWT SUPP.

STAIR 17

STAIR 18

ELECTRICAL

GIS Gas Insulated Switchgear
Leak observed Aug 15th
Seimens investigating

ELECTRICAL SHOP

CRITICAL SPARE PARTS / PUMP REBUILD

FACILITIES SHOP

LIWS LAB

FMS CONTROL ROOM / I&C LAB

MECH. CONTROL ROOM

MECH. WORKSHOP

TMXW

QC and Punchlist in Task Force

Analyzer Room

NH4W

QC and Punchlist in Task Force

SCR/FMS/LSS Authorized Entrance Only

CUB Mech/Electrical I&C White Board Meeting in MECH WORKSHOP Rm.

Fire Alarm devices Reporting to Intel Blue tag. FMS A-B

Fire Suppression Testing Aug. 22

Vendor pipe spool due onsite Aug 25 with oiler start up WW 35

Damper installs WW 34 EER needed for Actuators

IA-PA in Early Run

CHILLERS

UPN 114 recirculating clean water UPN 115,116,117 Stage 3 Flush
UPN 126 Stage 2 Flush
UPN 111 Stage 1 Flush

CHILLERS

Restore CH 126-2-10

Load Sand Filters DV walks WW 34/35

SAND FILTERS

BOILERS

OIL FUEL TANK

D.V. Walk WW 34. Fuel Polishing, Tags and 3 outstanding instruments Aug. 18

NORTH YARD

WATER TREATMENT

SOUTH YARD

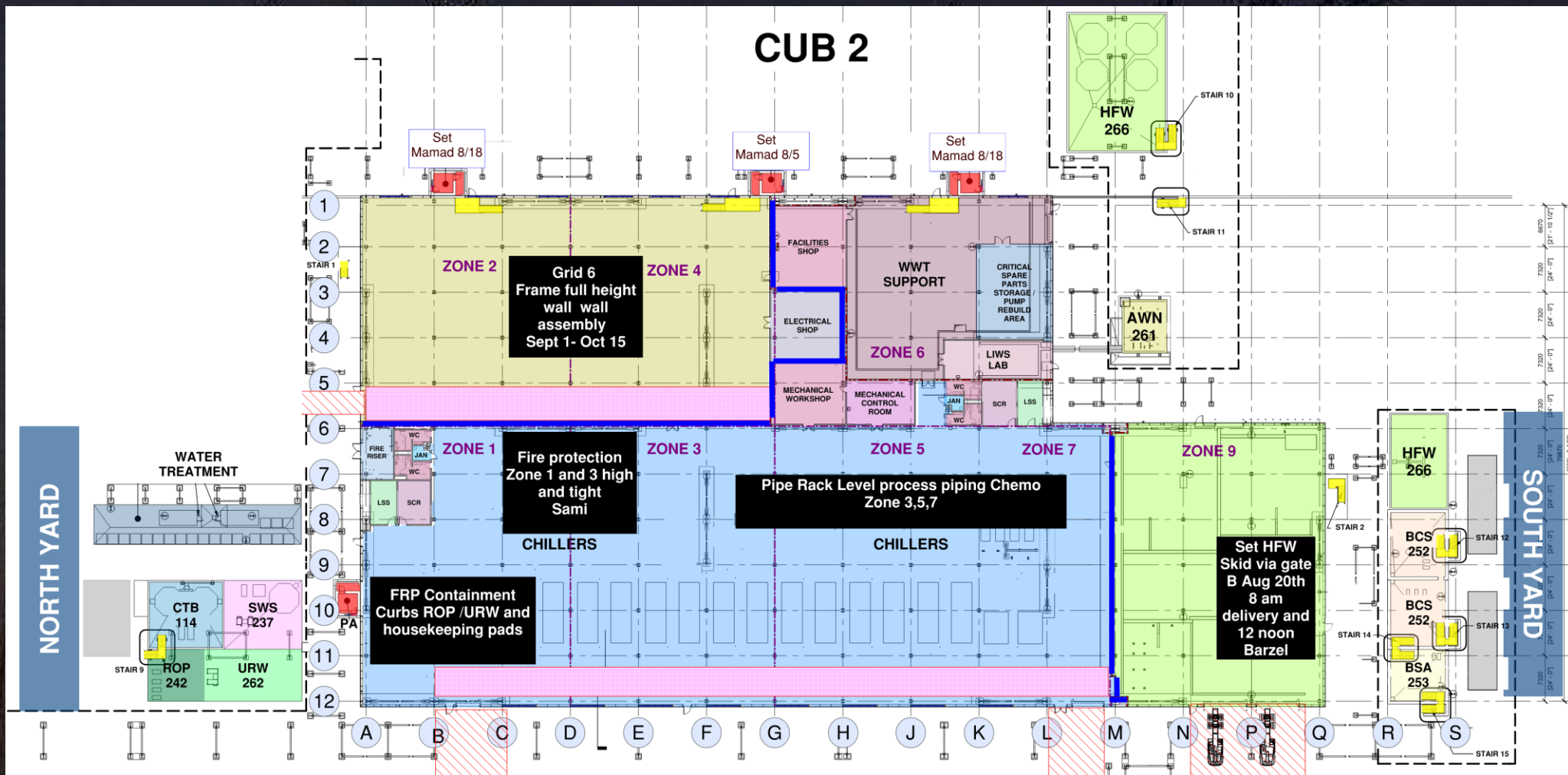
Nalco Vendor System
Check out Consturction
Complete Aug. 21-28
EER needed for Injection
Points in 114 at roof.

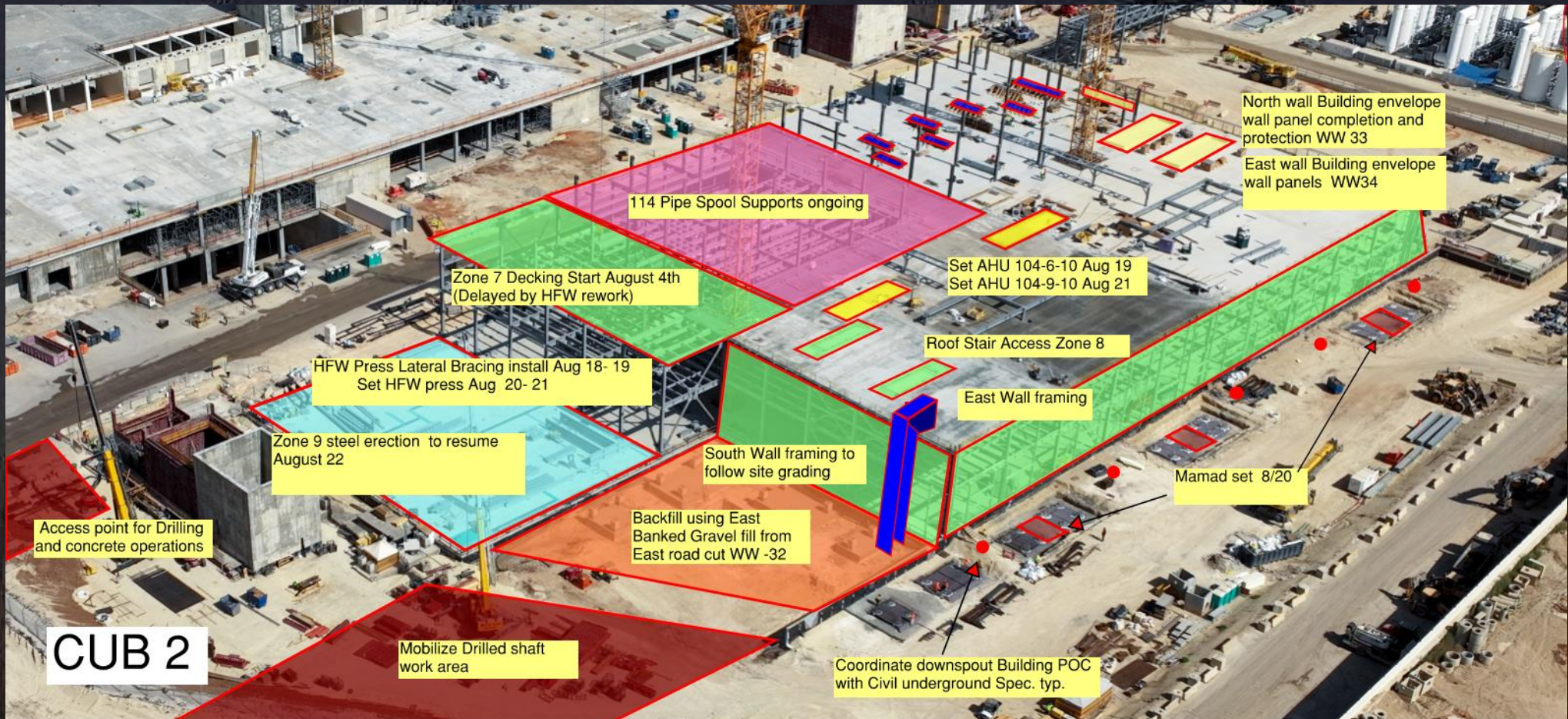
Pressure Test ROP/URL
Aug.20
Barzel

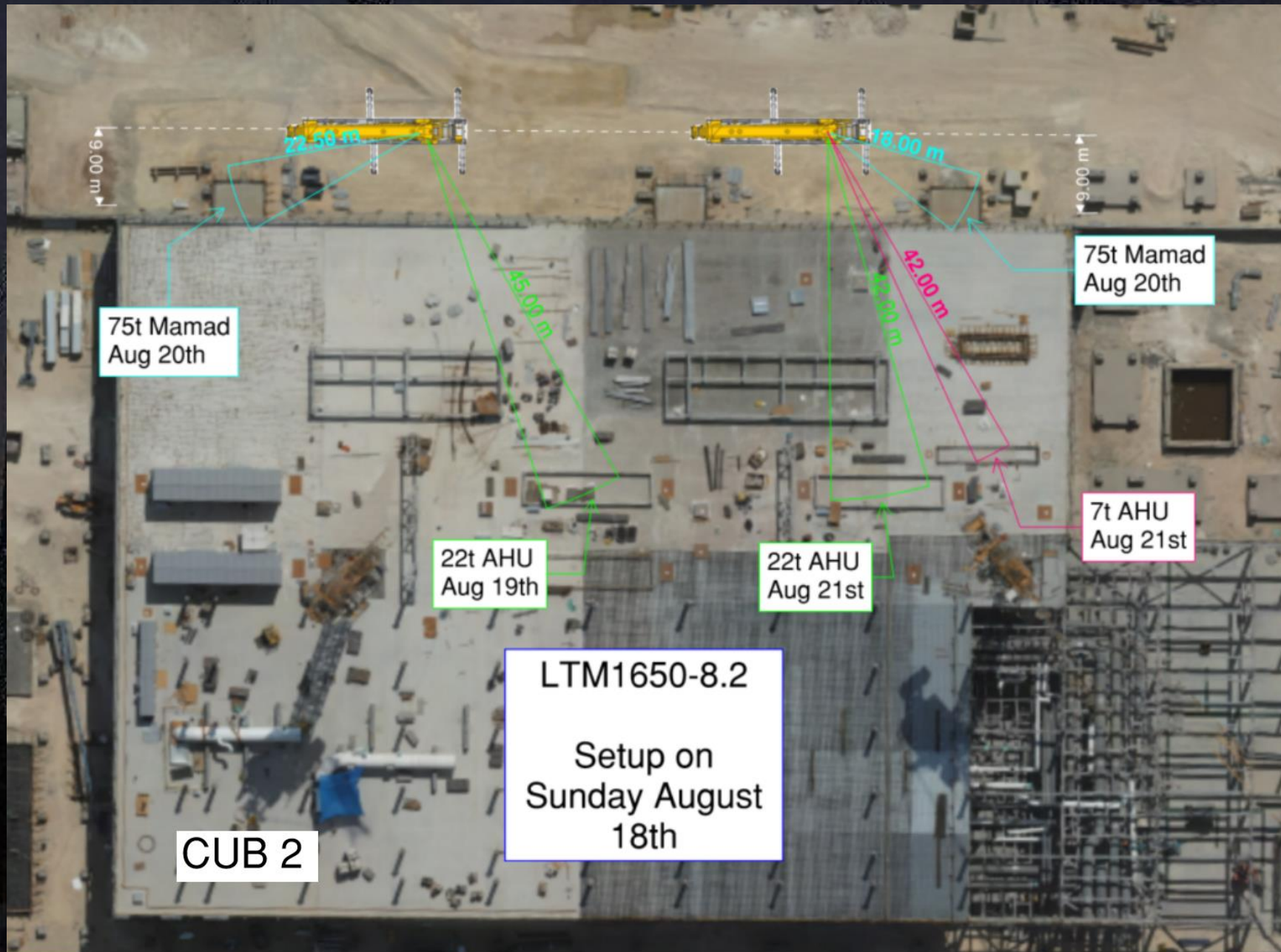
ROP 242

URW 262









El-mor:

SES & AIS - Pulling & term control cables

Trestle - Start installing FO cable tray covers

EGEN's - Close out COR which is adding cable protection.

NO ENTRY
HV ENERGIZED AREA

TMT:

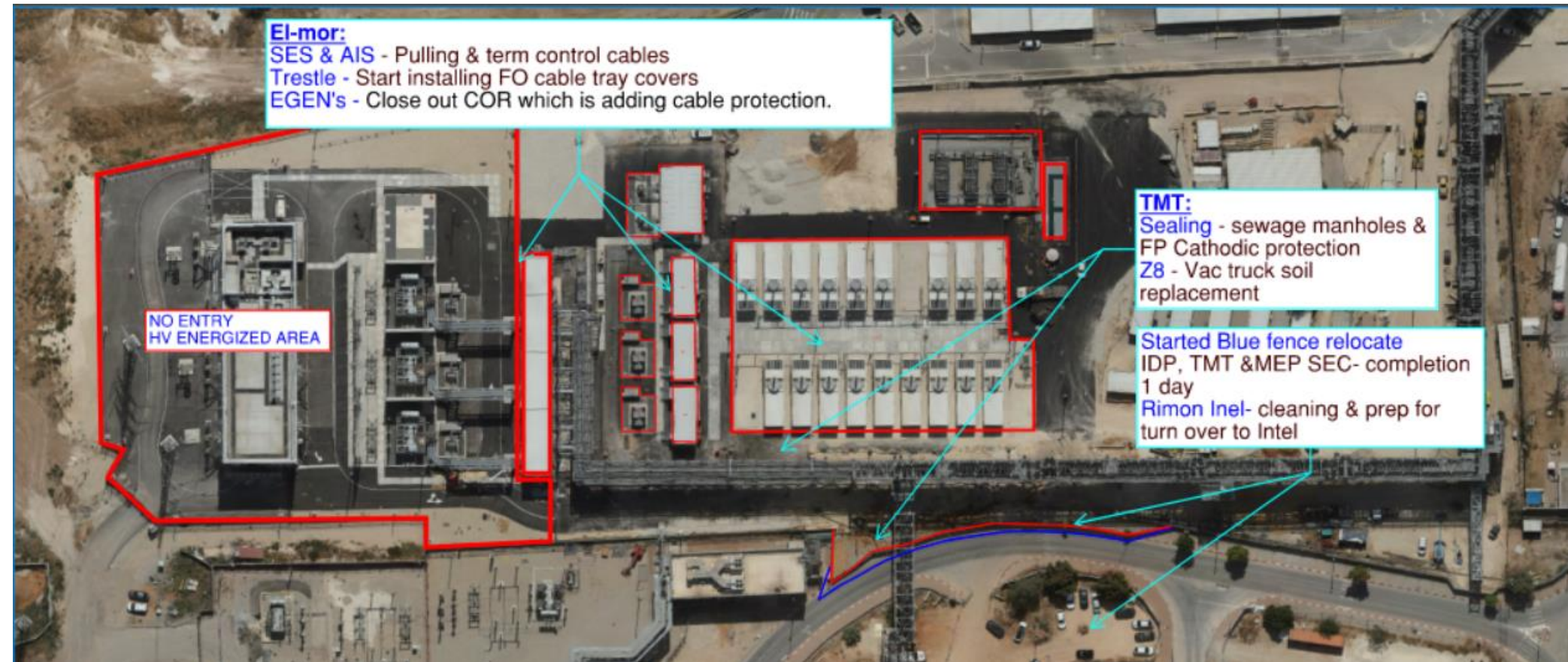
Sealing - sewage manholes &
FP Cathodic protection

Z8 - Vac truck soil
replacement

Started Blue fence relocate

IDP, TMT & MEP SEC- completion
1 day

Rimon Inel- cleaning & prep for
turn over to Intel





Trestle - MOD 2 Steel erection

T-17 Lvl 1

August 14

August 11

August 13

August 18

August 15

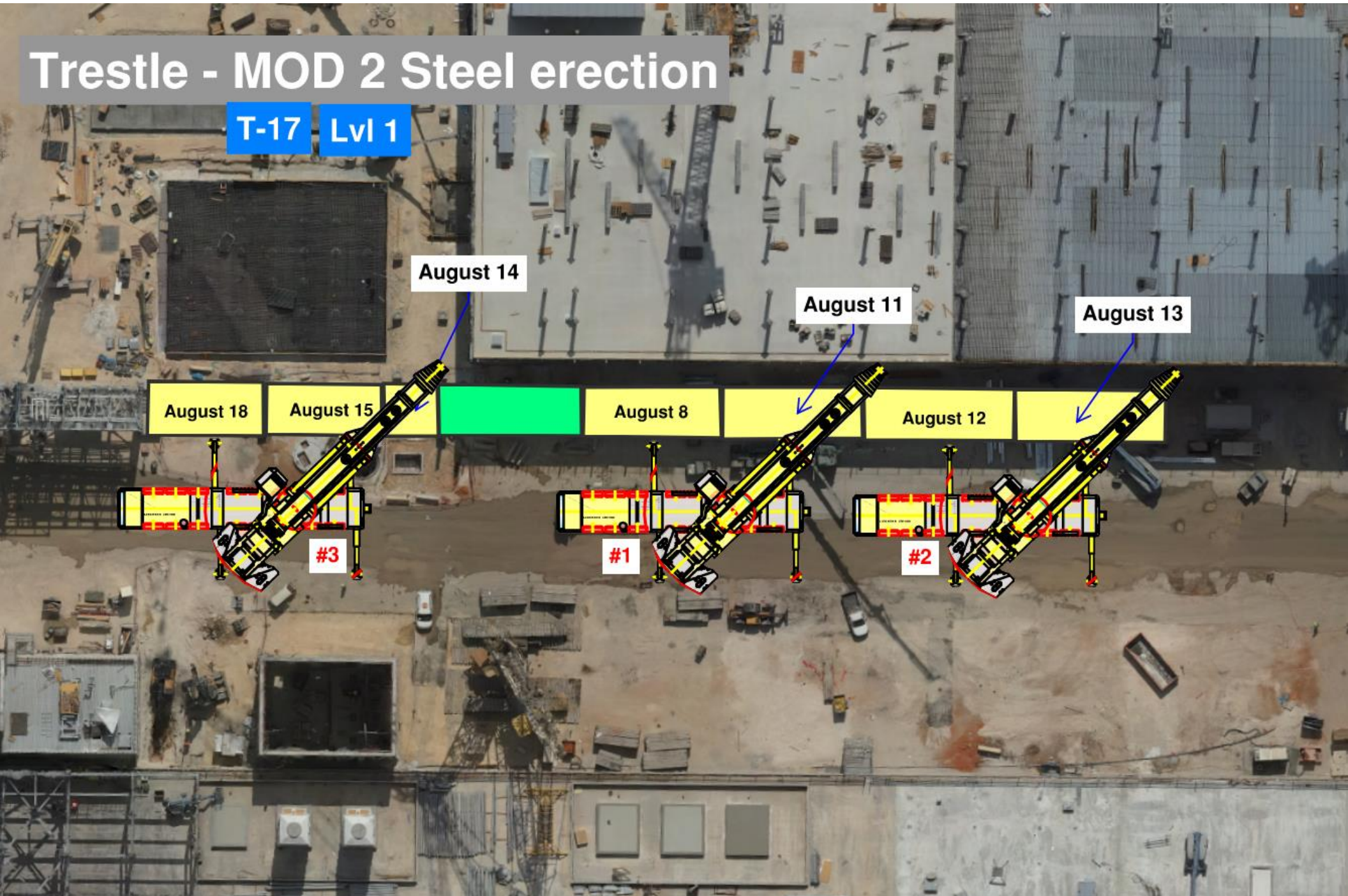
August 8

August 12

#3

#1

#2



Trestle - MOD 2 Steel erection

T-17 Lvl 2

August 19

August 25

August 27

August 21

August 20

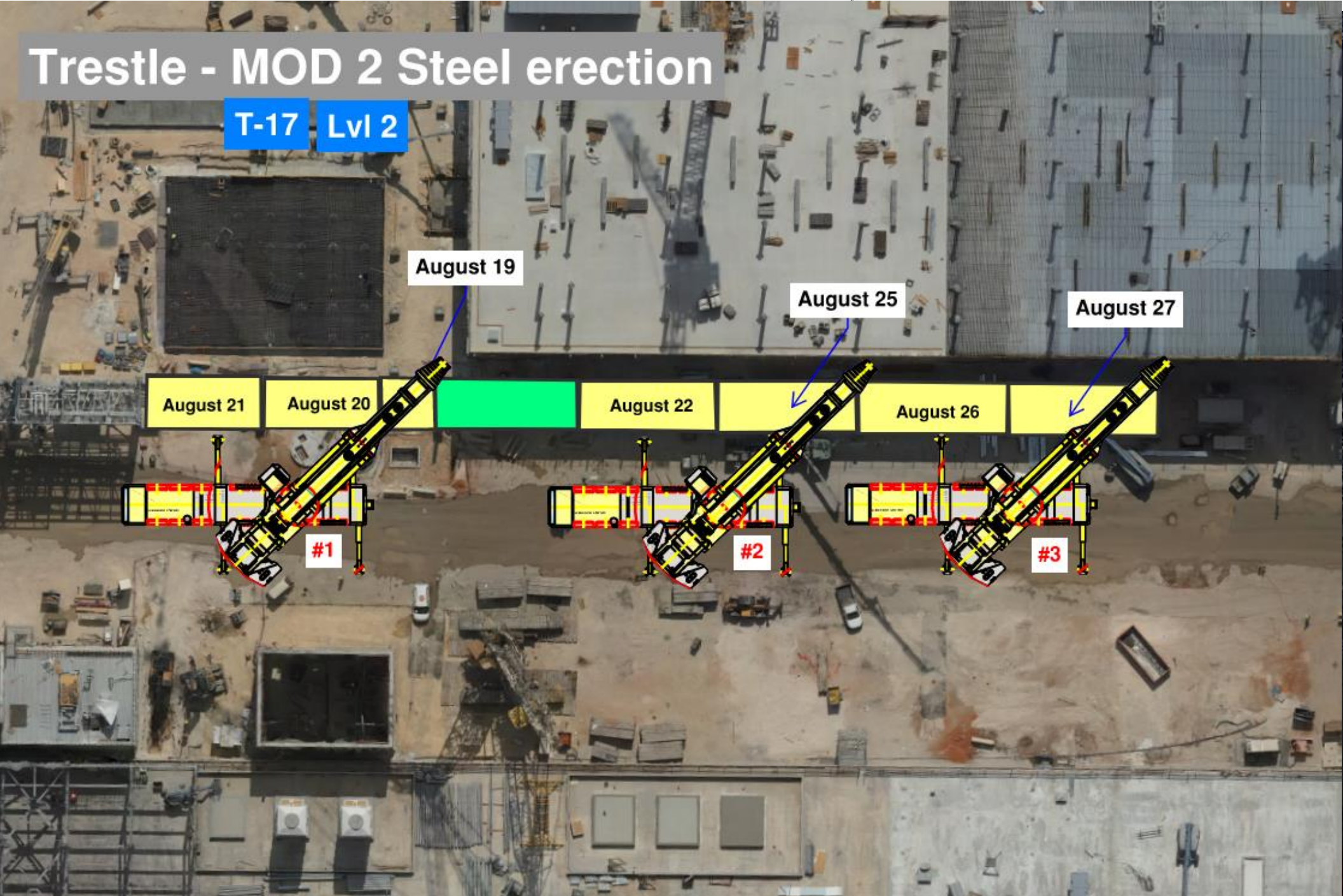
August 22

August 26

#1

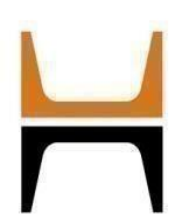
#2

#3



BSGS



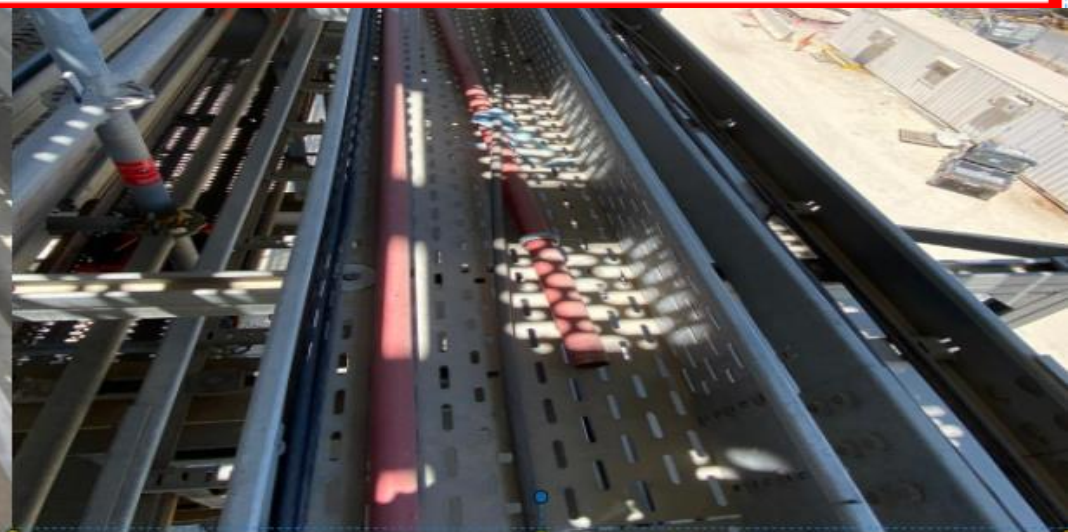


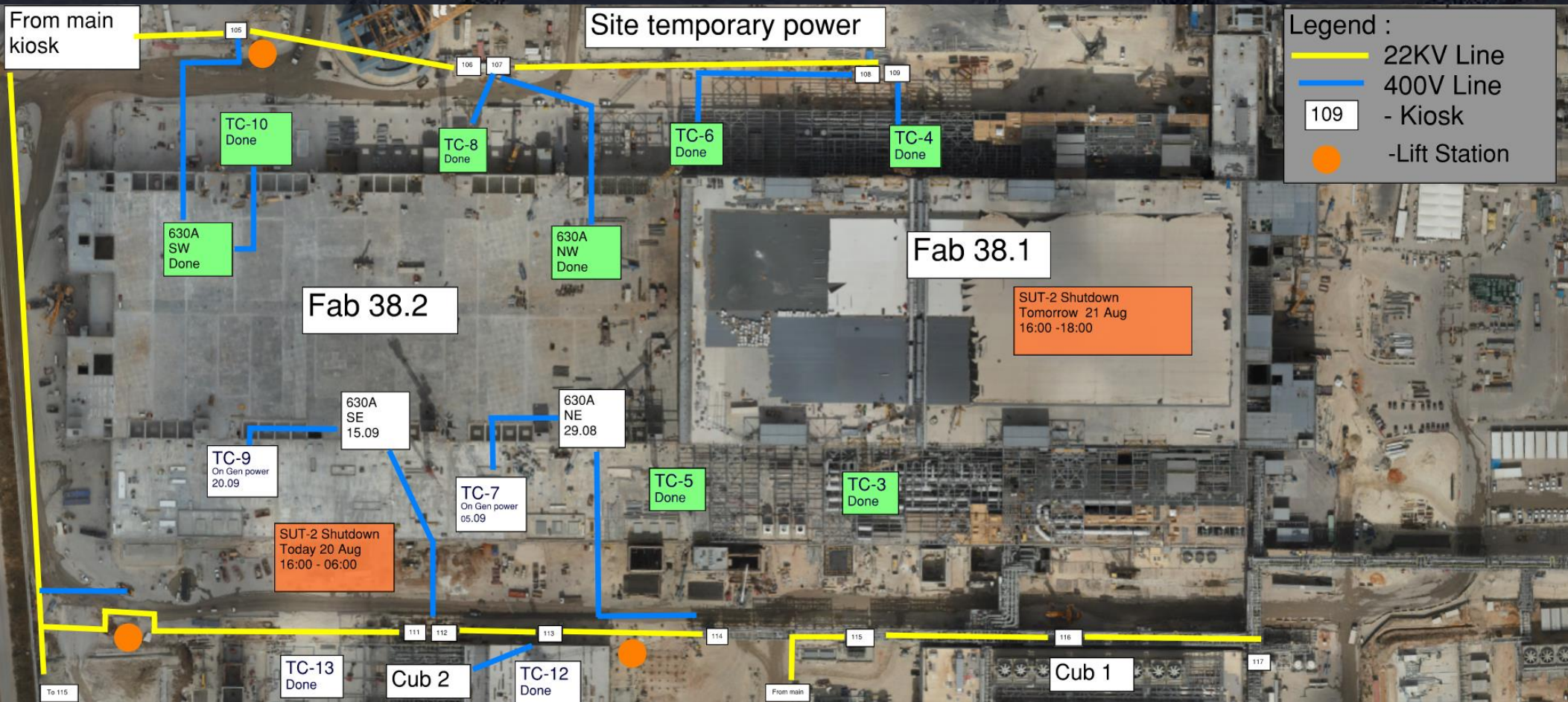
HOFFMAN CONSTRUCTION COMPANY



HOFFMAN
Sparrow  

CENTER CATWALKS LEVEL 2 FIBER OPTIC TRAYS





Daily Coordination Meeting

Site Logistics

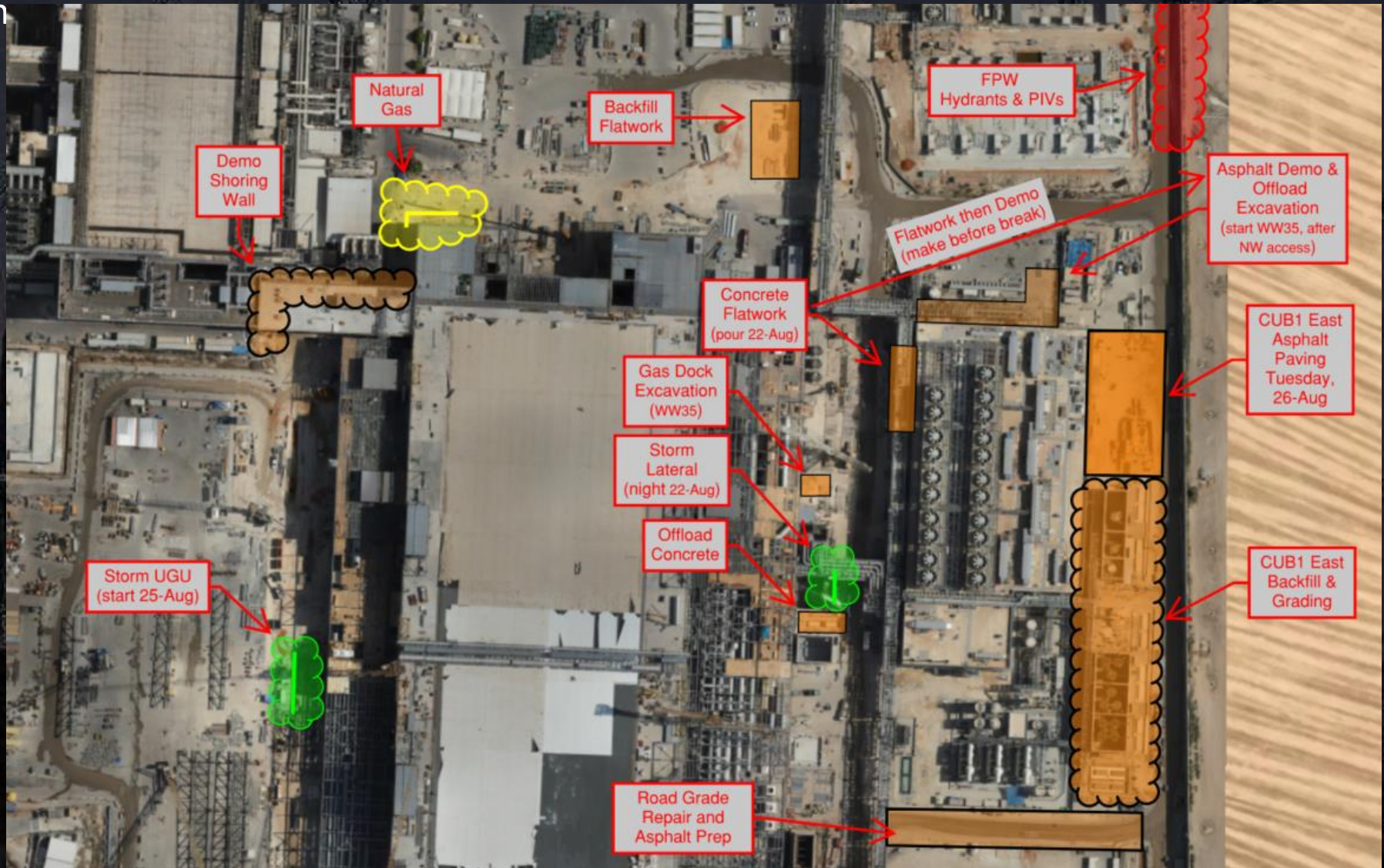
North Gate B



Daily Coordination Meeting

Site Logistics

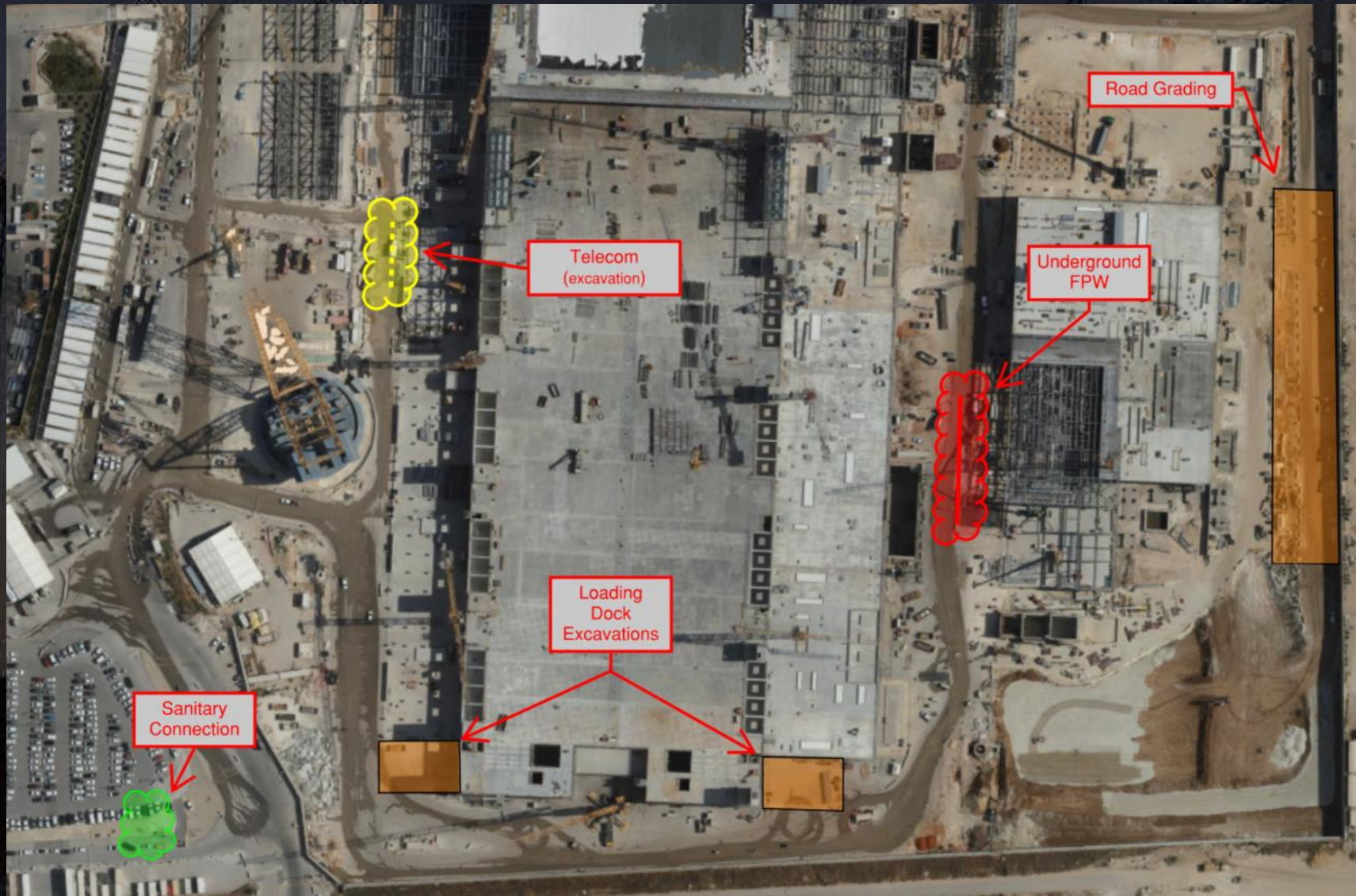
North



Daily Coordination Meeting

Site Logistics

South

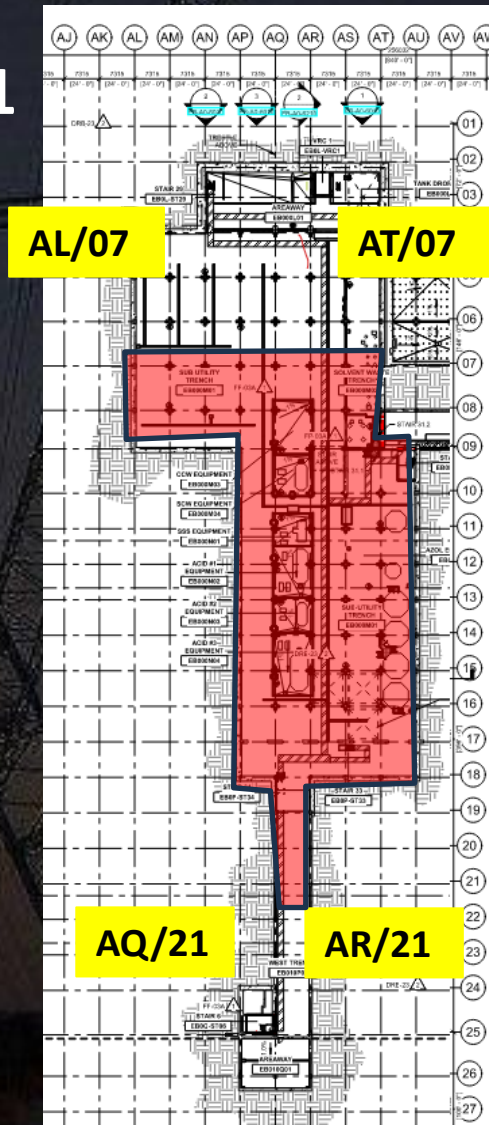




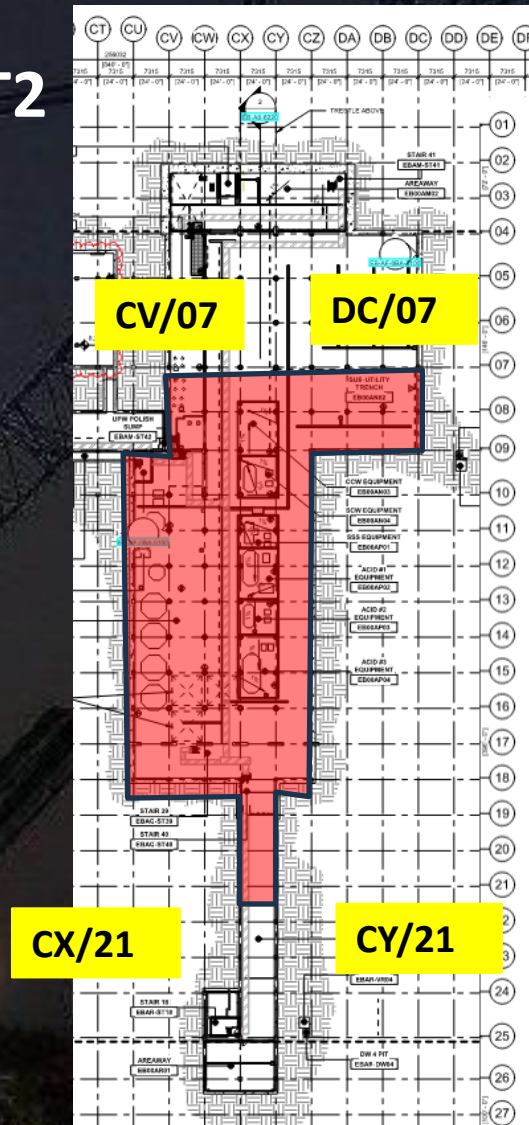
Daily Coordination Meeting

Site Logistics - Protected Areas (SUT Level)

SUT1

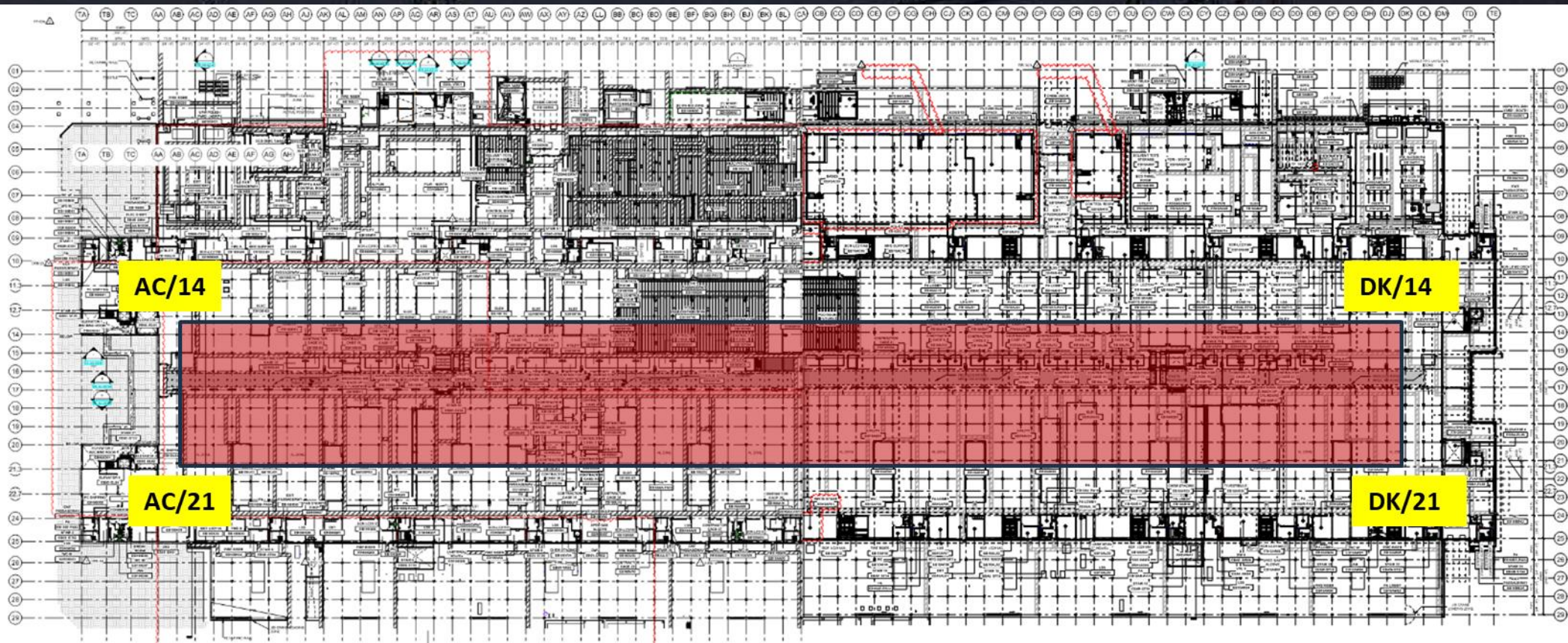


SUT2



Daily Coordination Meeting

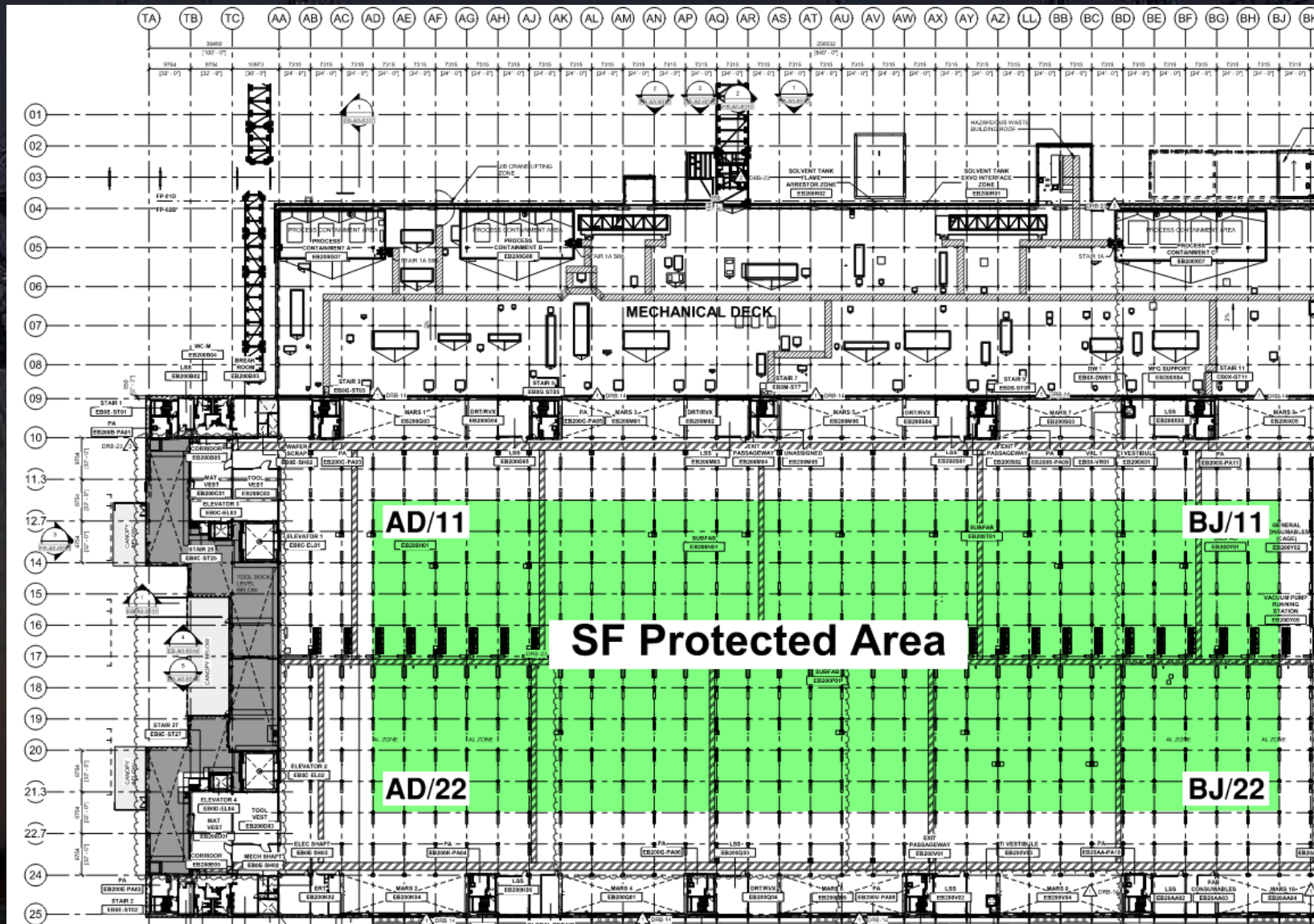
Site Logistics - Protected Areas (Utility Level)





Daily Coordination Meeting

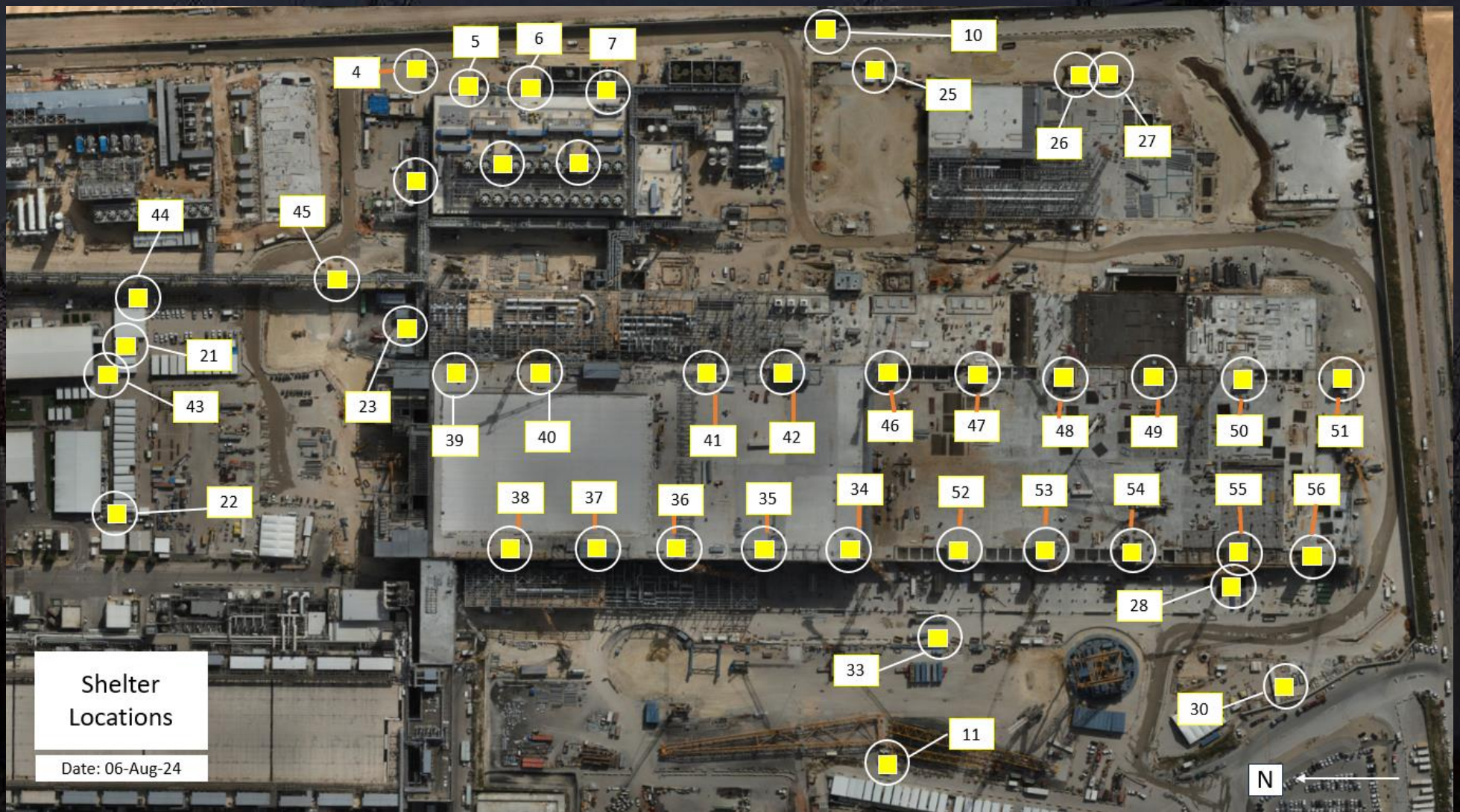
Site Logistics - Protected Areas (Subfab Level)



Daily Coordination Meeting

Site Logistics

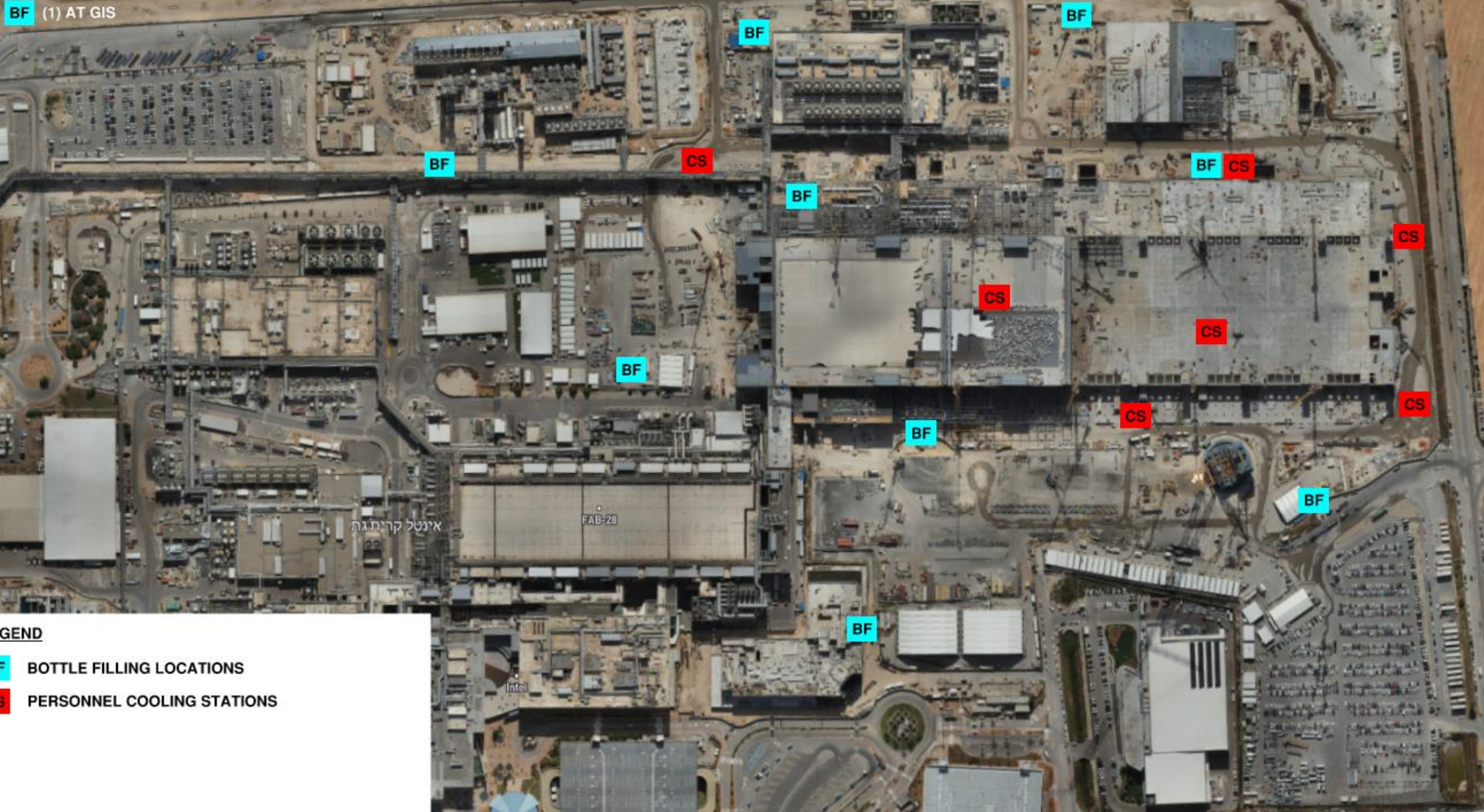
Protected Areas



Daily Coordination Meeting

WATER BOTTLE FILLING & PERSONNEL COOLING STATIONS






BF (1) AT GIS



De-energize Tools and Equipment

- When we are not actively using our power tools and our equipment we need to remove the capability of accidentally turning on the tool or moving the equipment.
- With power tools this involves removing the battery or unplugging it.
- With equipment, this largely depends on the equipment.
- With MEWPs the site requirement is to press the emergency stop button. This is required even in double actuated controls and is required whenever the lift is stopped.
- This is required for other equipment on site as well. Sometimes it is simply turning off the engine while we are occupying but not moving the equipment.
- Accidentally activating or moving a tool or equipment can easily result in serious injuries. Please make sure we are coaching our workers about this.

Heat Index- August 20th

	temperature (°F)																
	80	82	84	86	88	90	92	94	96	98	100	102	104	106	108	110	
Relative Humidity (%)	40	80	81	83	85	88	91		97	101	105	109	114	119	124	130	136
	45	80	82	84	87	89	93	96	100	104	109	114	119	124	130	137	
	50	81	83	85	88	91	95	99	103	108	113	118	124	131	137		
	55	81	84	86	89	93	97	101	106	112	117	124	130	137			
	60	82	84	88	91	95	100	105	110	116	123	129	137				
	65	82	85	89	93	98	103	108	114	121	128	136					
	70	83	86	90	95	100	105	112	119	126	134						
	75	84	88	92	97	103	109	116	124	132							
	80	84	89	94	100	106	113	121	129								
	85	85	90	96	102	110	117	126	135								
	90	86	91	98	105	113	122	131									
	95	86	93	100	108	117	127										
	100	87	95	103	112	121	132										
			Caution		Extreme Caution		Danger		Extreme Danger								

Extreme Caution

- Ensuring water and shaded areas available
- Acclimating workers
- Emergency planning and response
- Training workers and supervisors on the signs of heat stress and preventative measures
- Modified work schedules and/or rotating out workers
- Monitoring of workers for signs of heat stress

Daily Coordination Meeting



14:00 Sign In