

Daily Coordination Meeting



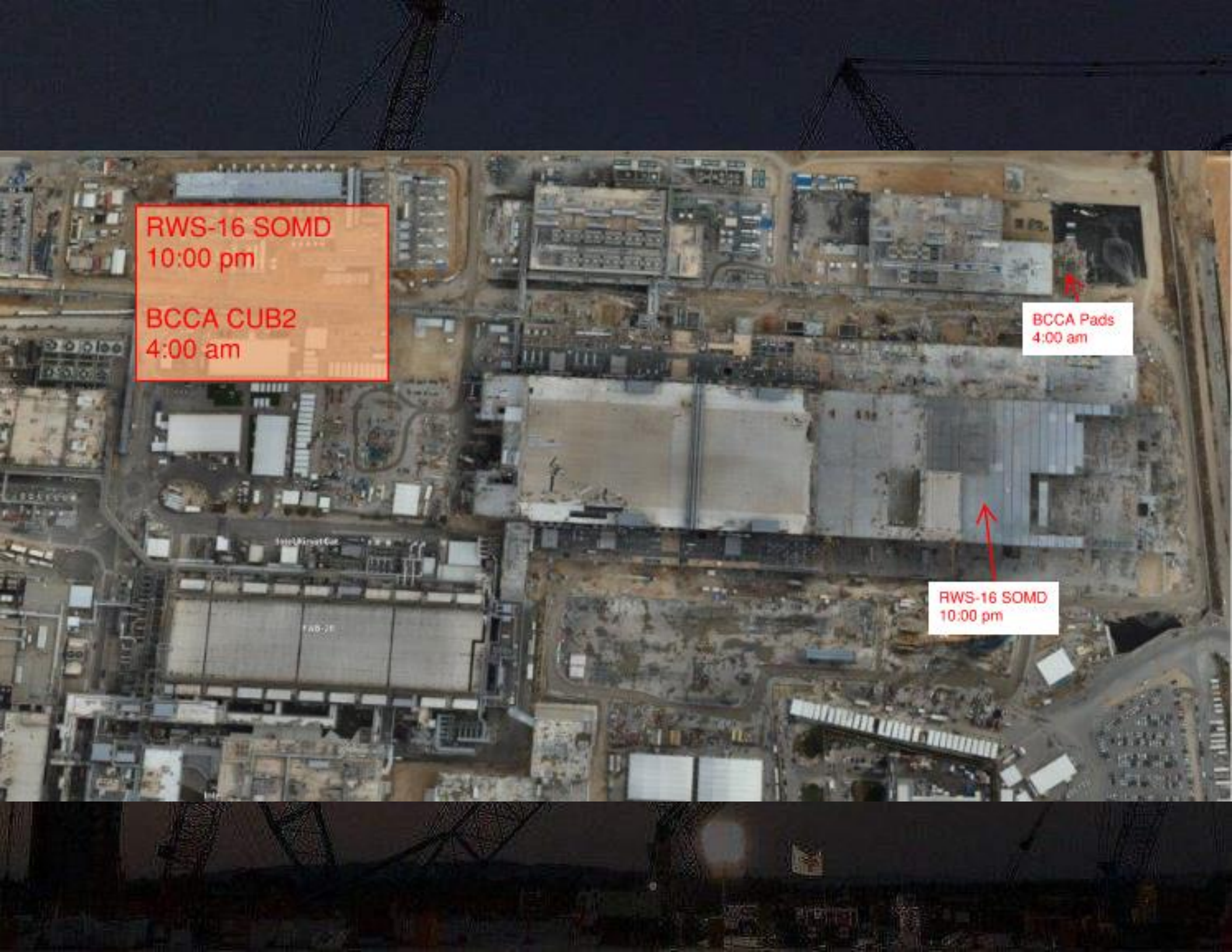
14:00 Sign In

Daily Coordination Meeting

General Topics:

- Real world example for spotters





RWS-16 SOMD
10:00 pm

BCCA CUB2
4:00 am

BCCA Pads
4:00 am

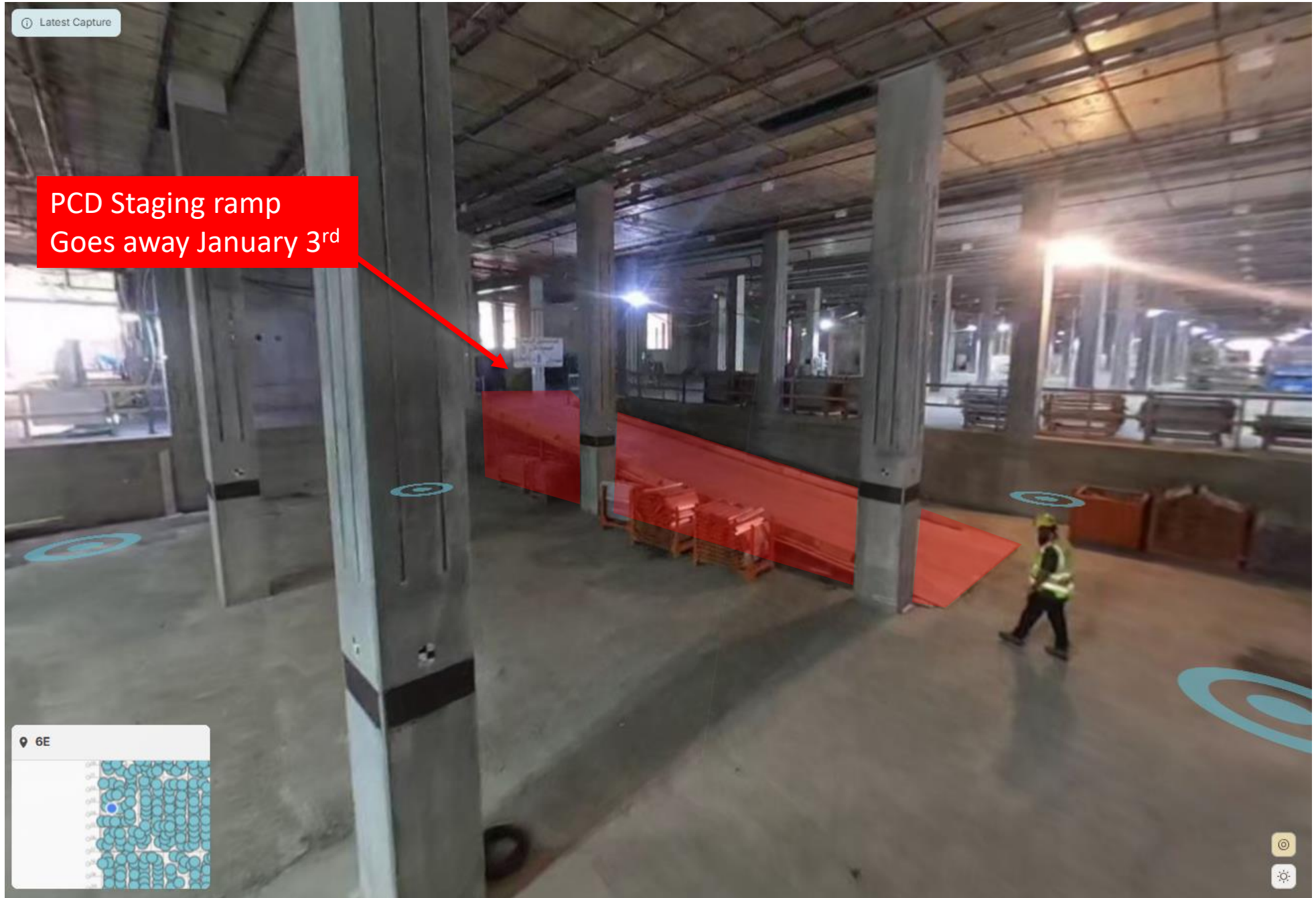
RWS-16 SOMD
10:00 pm



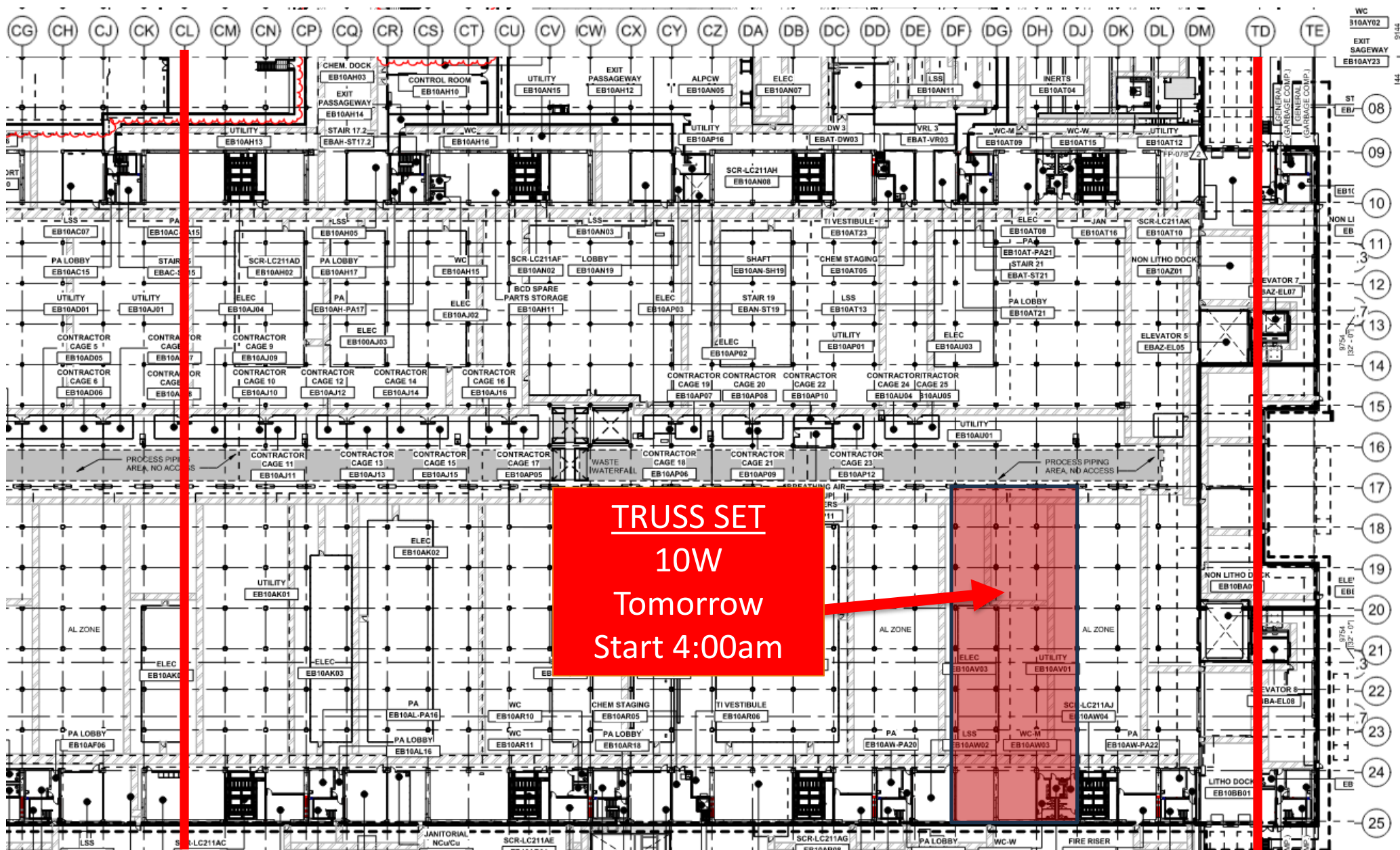
HOFFMAN CONSTRUCTION COMPANY



UTILITY LEVEL LOGISTICS

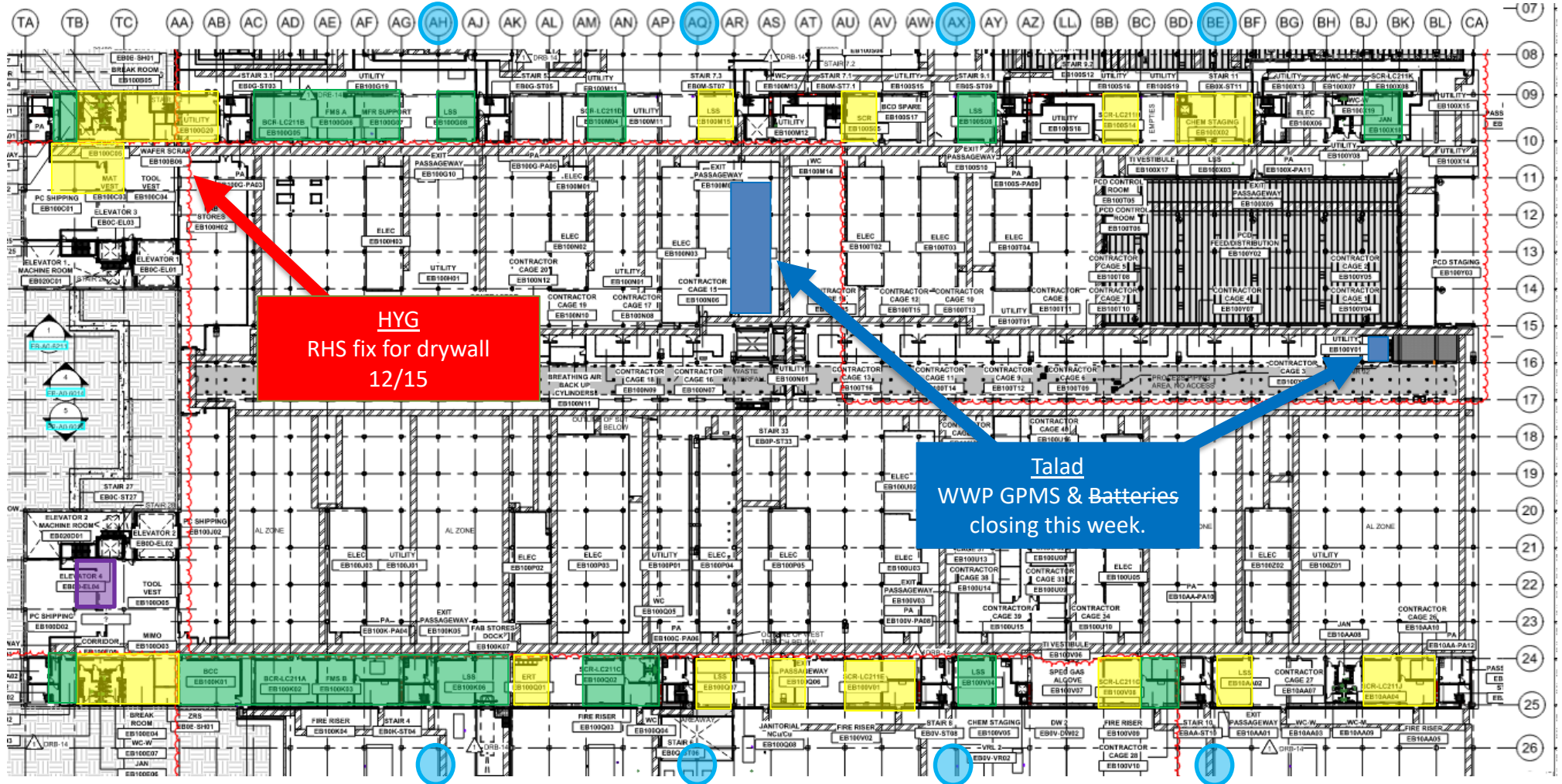


UTILITY LEVEL TRUSS





UTILITY LEVEL MOD1



BELFOR
Mold remediation

ELRAM
Drywall install

MEP+Electrical
Ready for re-install



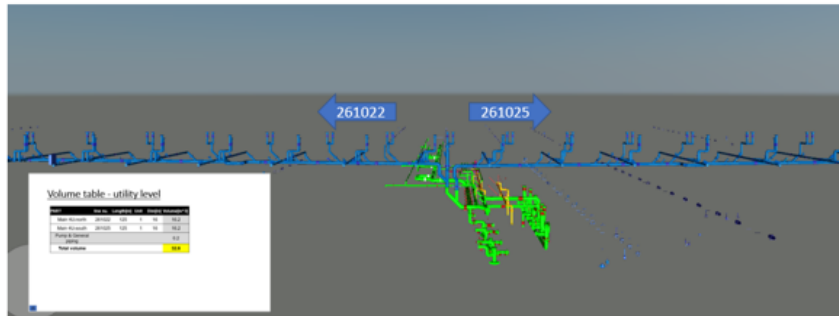
The floor plan displays a complex arrangement of rooms and corridors. At the top, a series of room labels are visible, including CA, CB, CC, CD, CE, CF, CG, CH, CJ, CK, CL, CM, CN, CP, CQ, CR, CS, CT, CU, CV, CW, CX, CY, CZ, DA, DB, DC, DD, DE, DF, DG, DH, DJ, DK, DL, DM, TD, and TE. On the right side, vertical labels range from 07 to 27. The plan features numerous rooms such as 'UTILITY EB10AC1', 'CONTRACTOR CAGE 1', 'STAIR 15', 'ELECTRICAL ROOM', and 'NON LITHO DOCK'. A prominent red arrow originates from the bottom center, pointing upwards and slightly to the right, indicating a specific focus area within the plan.

MALHIMIM
9E 9W & 8W
Ongoing
Need completion date

AW Fill

Pressure test flow drawing AWN SYSTEM

UTILITY LEVEL [BLUE LINES]



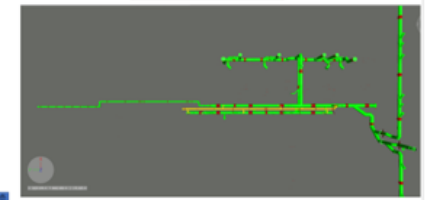
SUT PIPING

SUT PIPING VOLUME TABLE

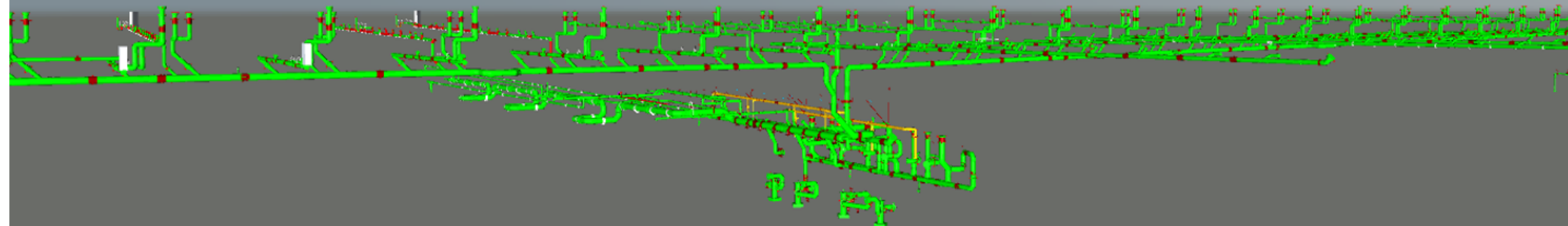
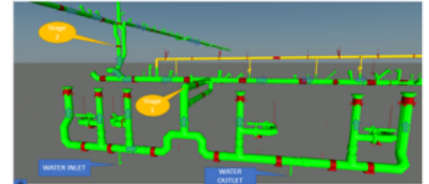
line no.	Length[m]	Dim[in]	Volume[m³]
261646	28	20	5.7
261627	4.5	16	0.6
261626	5	16	0.6
261624	6	16	0.8
261625	5	16	0.6
261644	8.3	16	1.1
261645	8.3	16	1.1
261643	32.2	16	4.2
261054	16	16	2.1
261683			0.0
261647	7	16	0.9
261628	49	16	6.4
261647	26	8	0.8
261028	3.5	16	0.5
261028	3.5	20	0.7

Total volume **25.3**

SUT - TOP VIEW

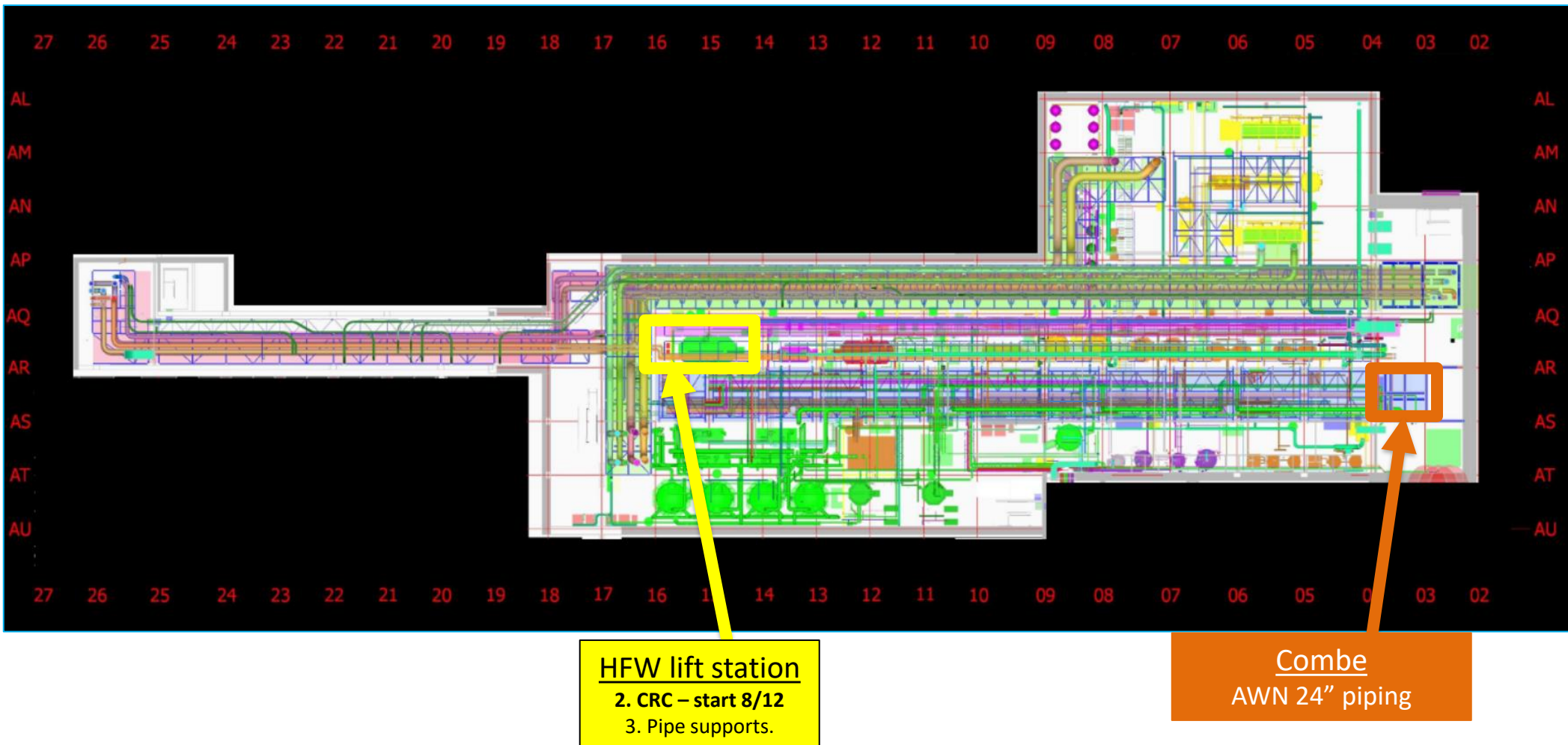


SUT- SIDE VIEW



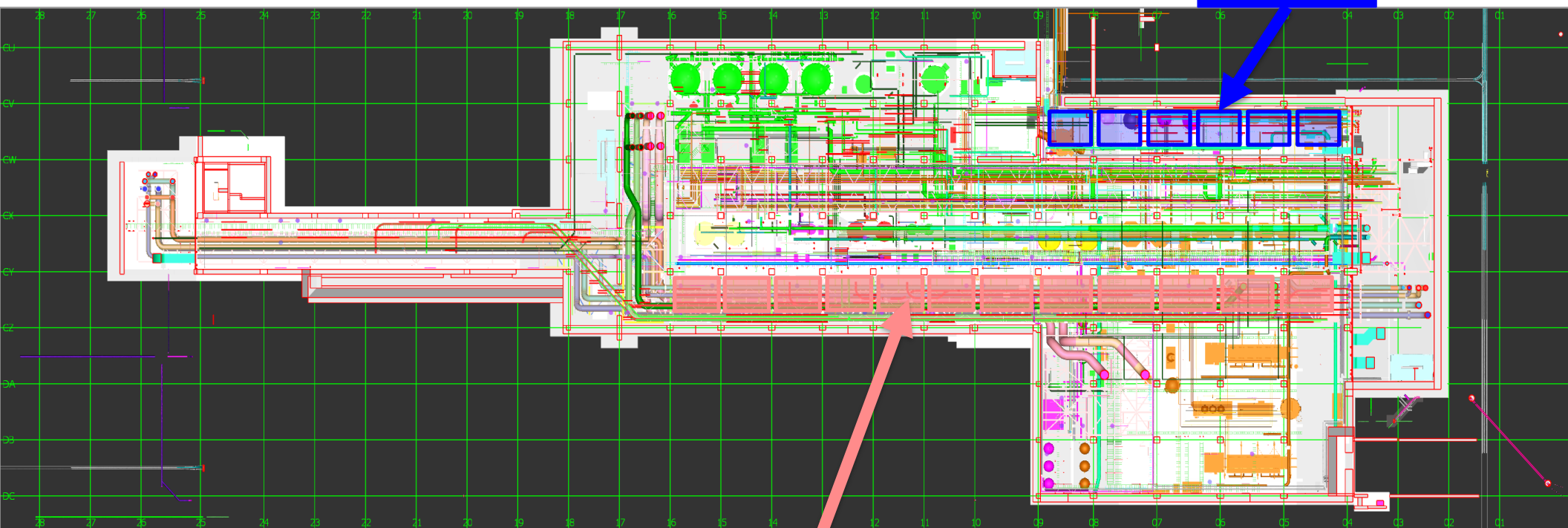


SUT 38.1 LEVEL



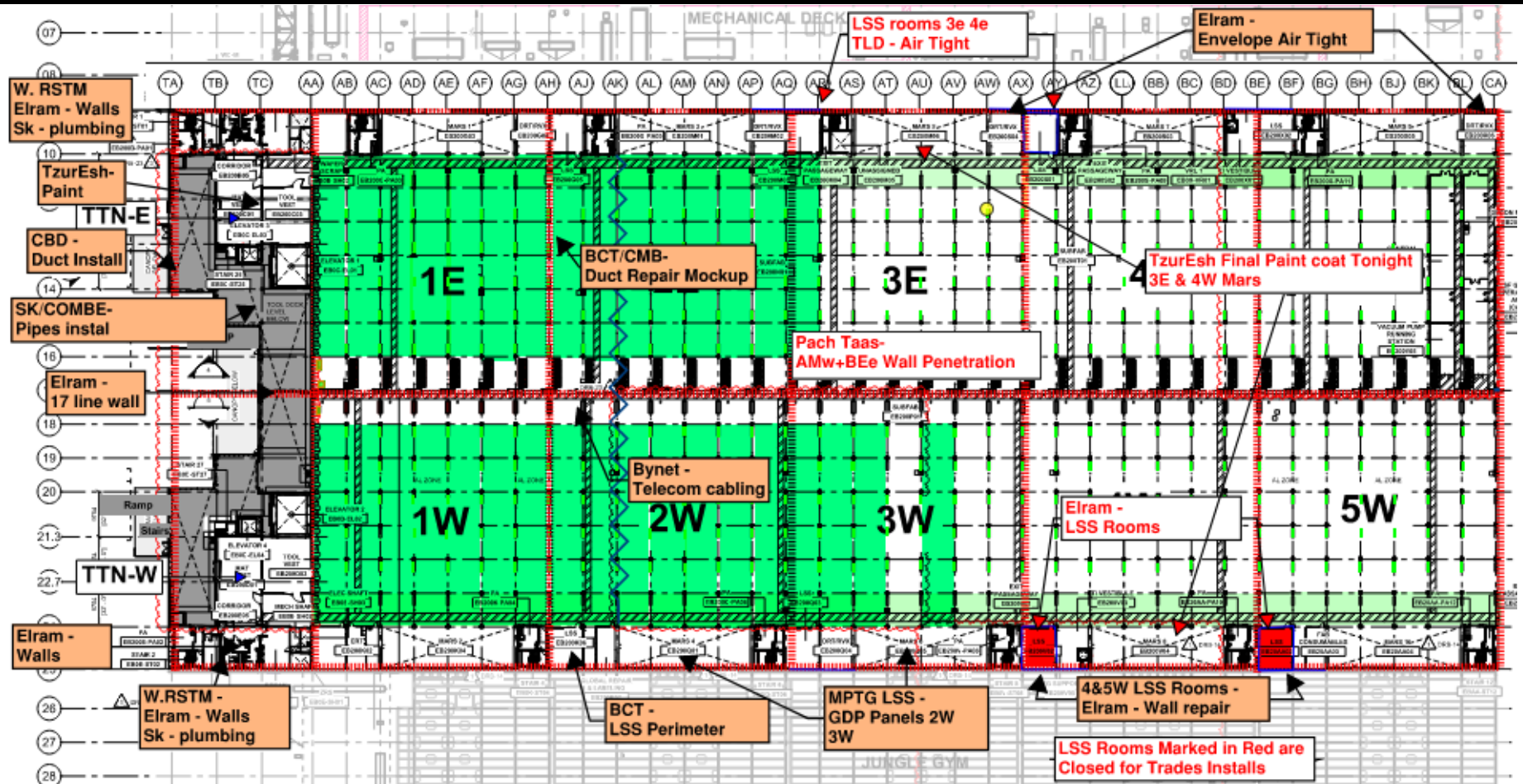
SUT 38.2 LEVEL

Rack 4b
Lifting
#1-08/12v
#2-11/12v
#3-16/12

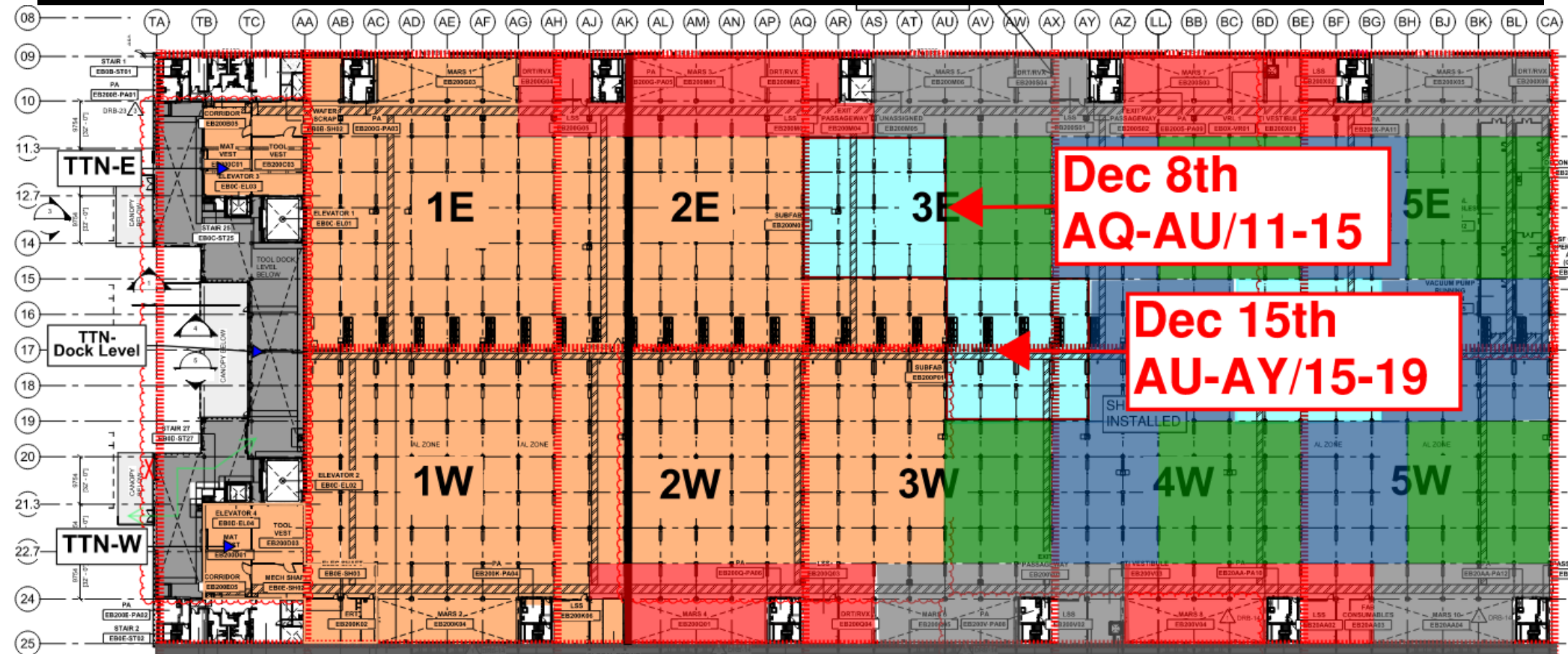


Rack 2
MIMO -
Module #5
12th of Dec

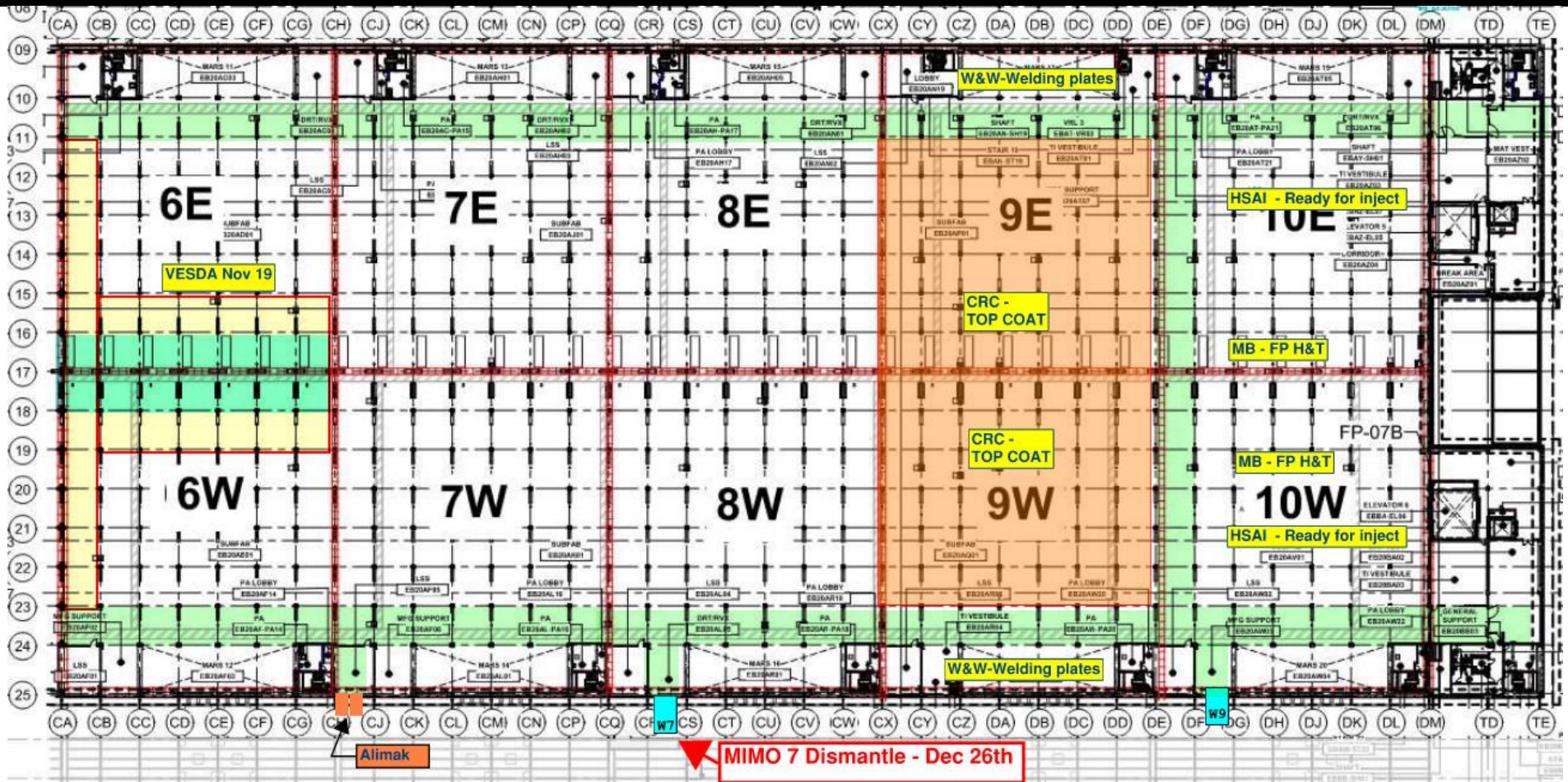
SUBFAB BUILDOUT MOD 1

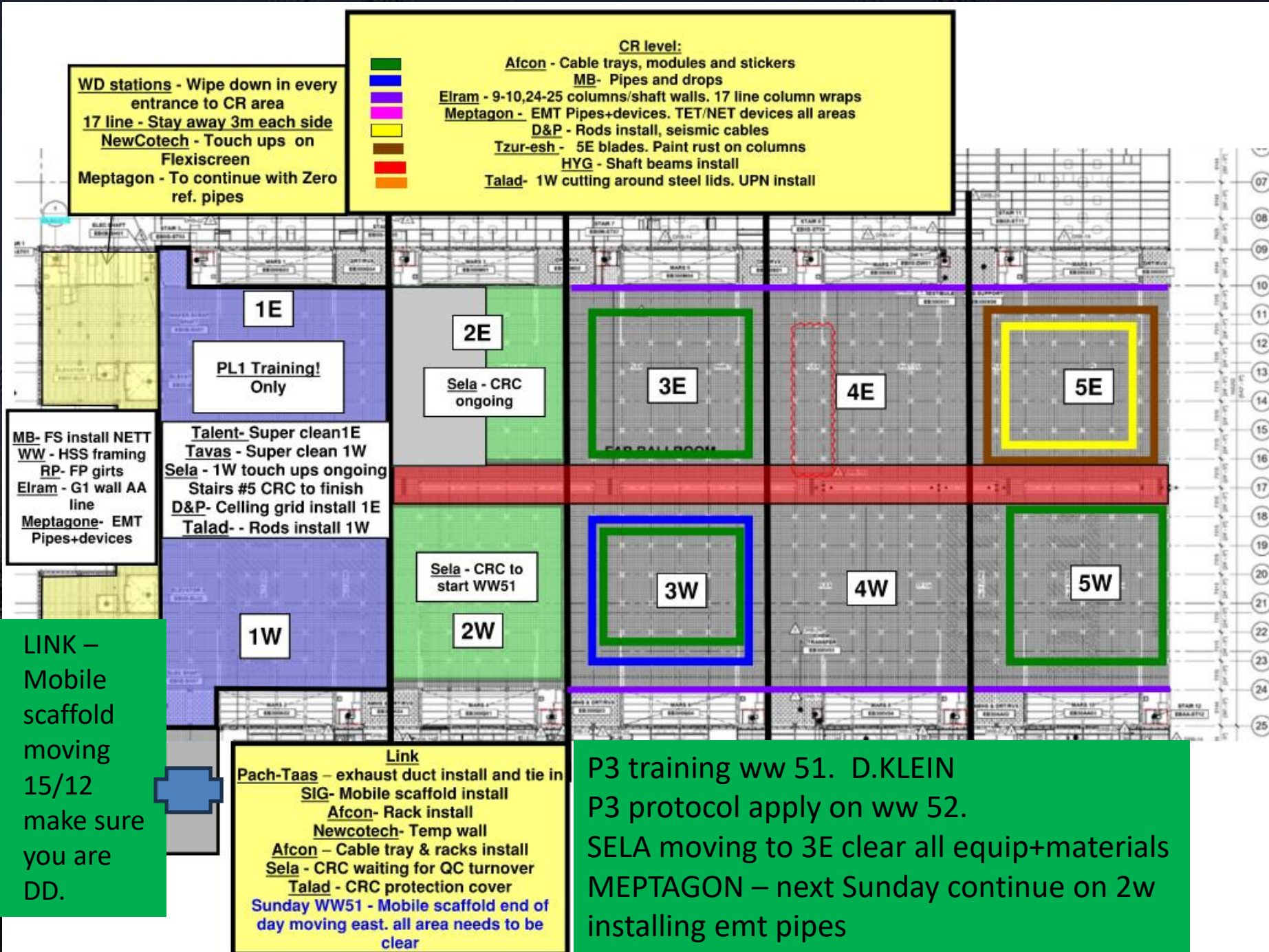
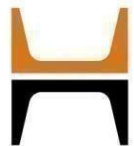


SUBFAB CRC TOPCOAT



SUBFAB BUILDOUT MOD 2







Keep all mimos landing pads & exit paths always clear of any materials.
Do not overload mimos&frps.

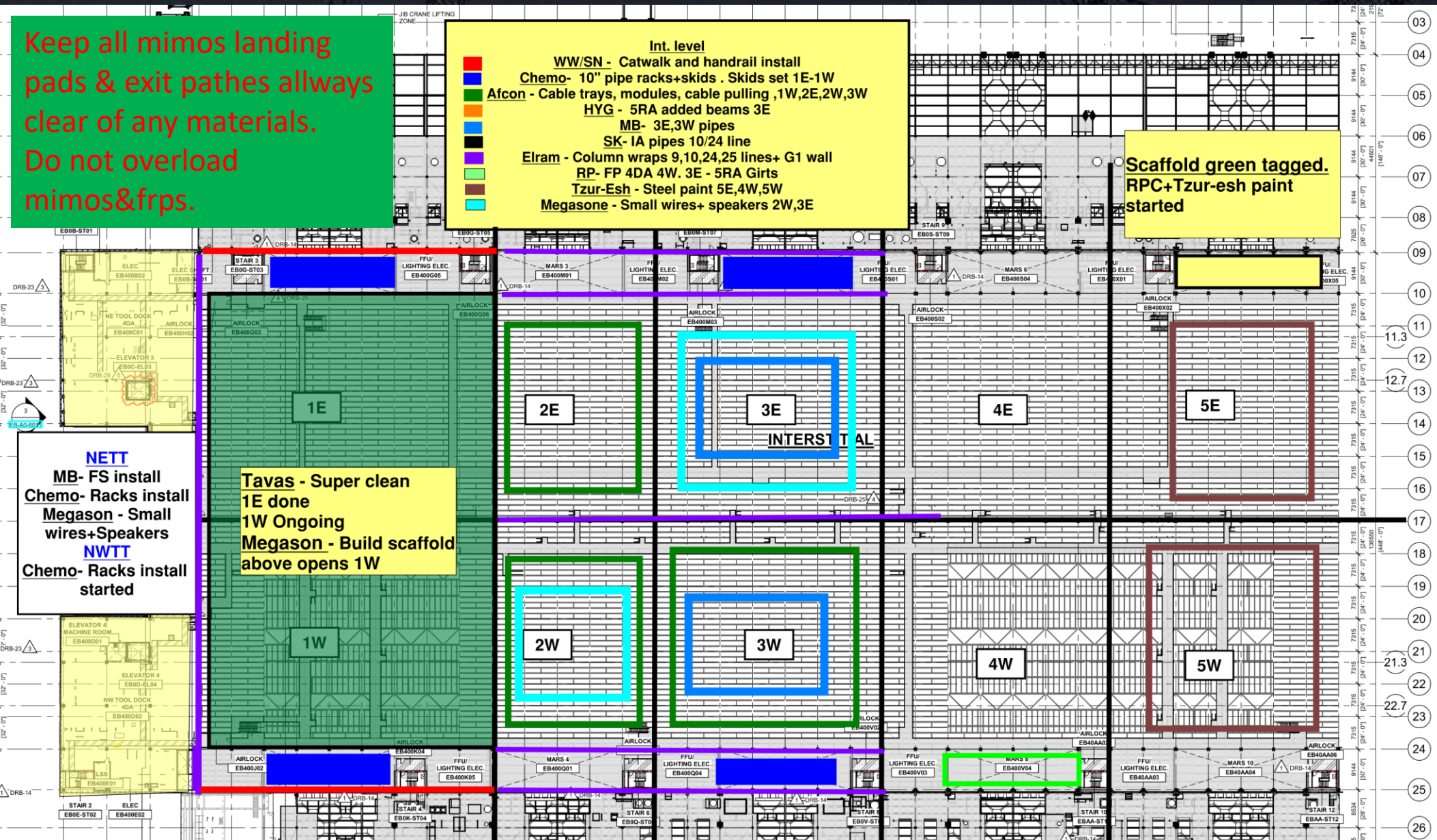
Int. level

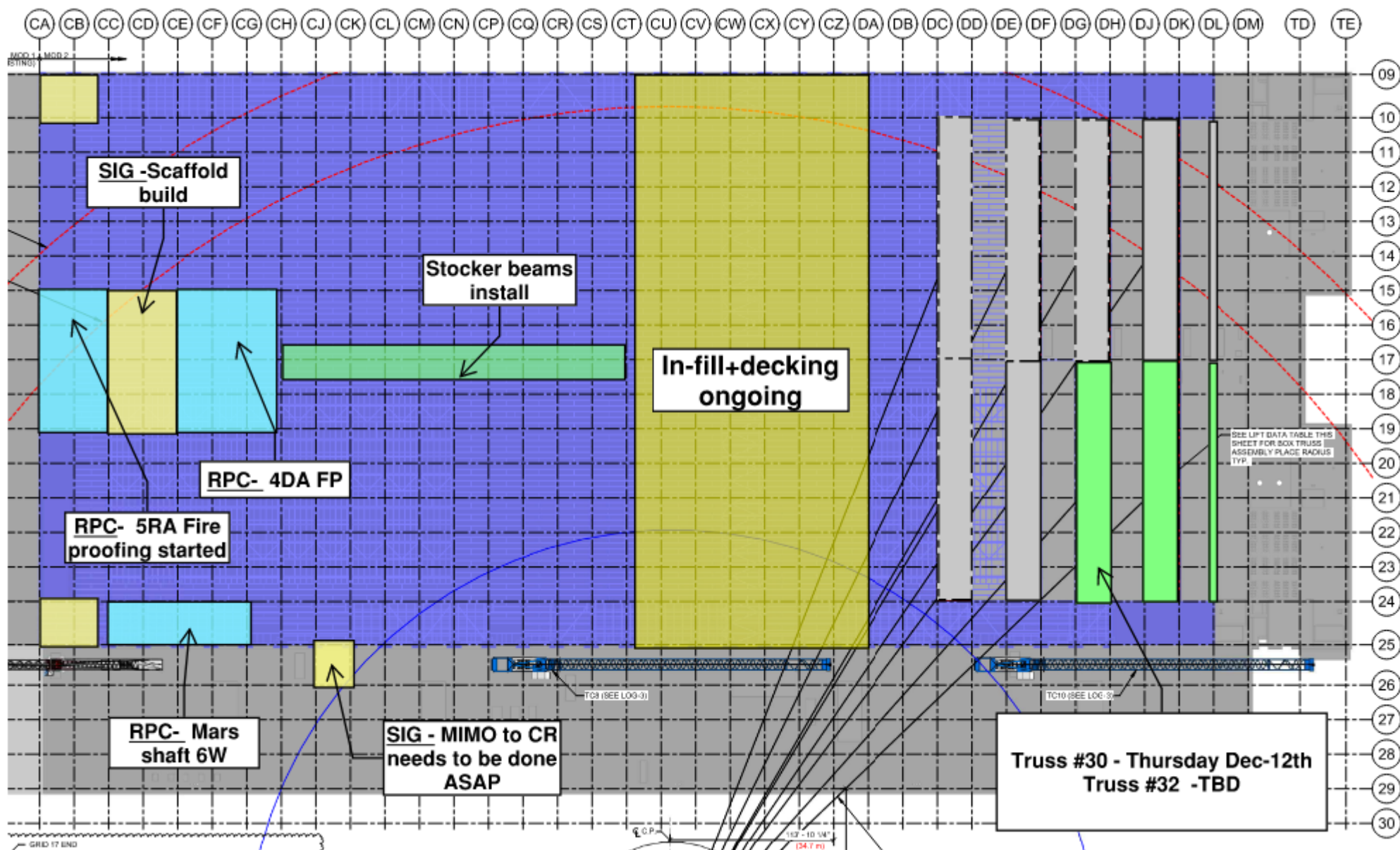
- WW/SN - Catwalk and handrail install
- Chemo- 10" pipe racks+skids . Skids set 1E-1W
- Afcon - Cable trays, modules, cable pulling ,1W,2E,2W,3W
- HYG - 5RA added beams 3E
- MB- 3E,3W pipes
- SK- 1A pipes 10/24 line
- Elram - Column wraps 9,10,24,25 lines+ G1 wall
- RP- FP 4DA 4W. 3E - 5RA Girts
- Tzur-Esh - Steel paint 5E,4W,5W
- Megasone - Small wires+ speakers 2W,3E

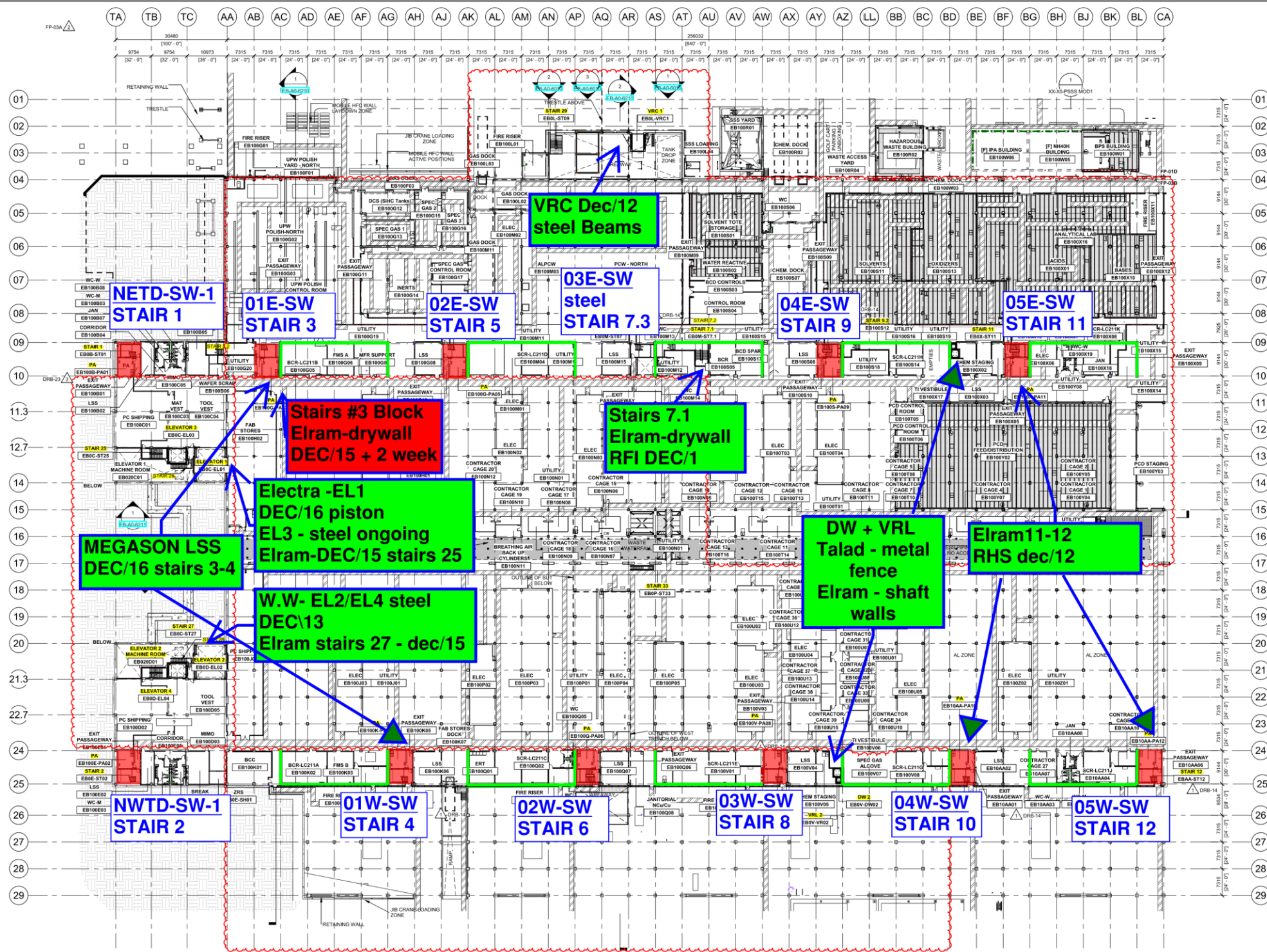
Scaffold green tagged.
RPC+Tzur-esh paint started

NETT
MB- FS install
Chemo- Racks install
Megasone - Small wires+Speakers
NWTT
Chemo- Racks install started

Tavas - Super clean
1E done
1W Ongoing
Megasone - Build scaffold above opens 1W





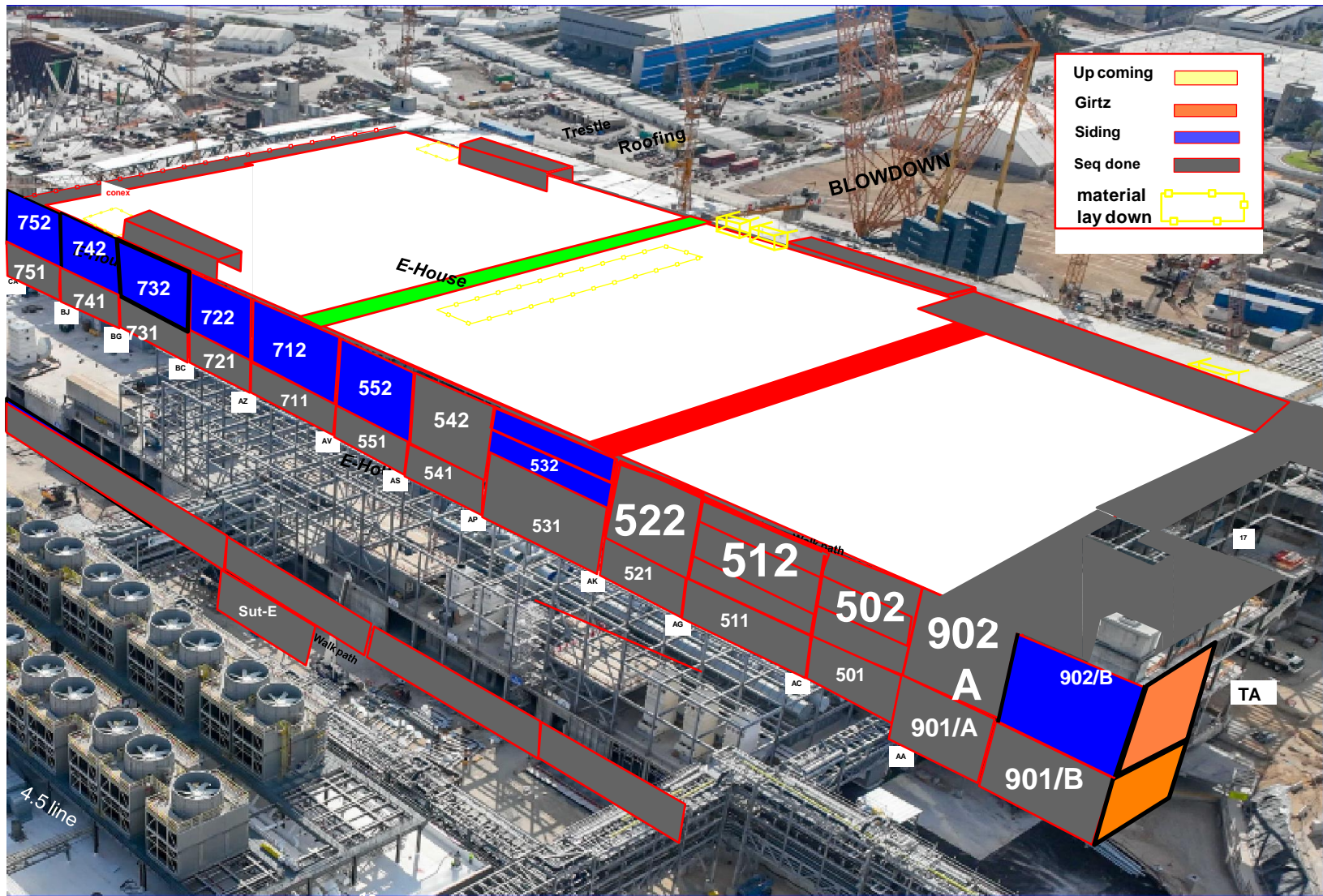


Siding - East FAB - PSSS

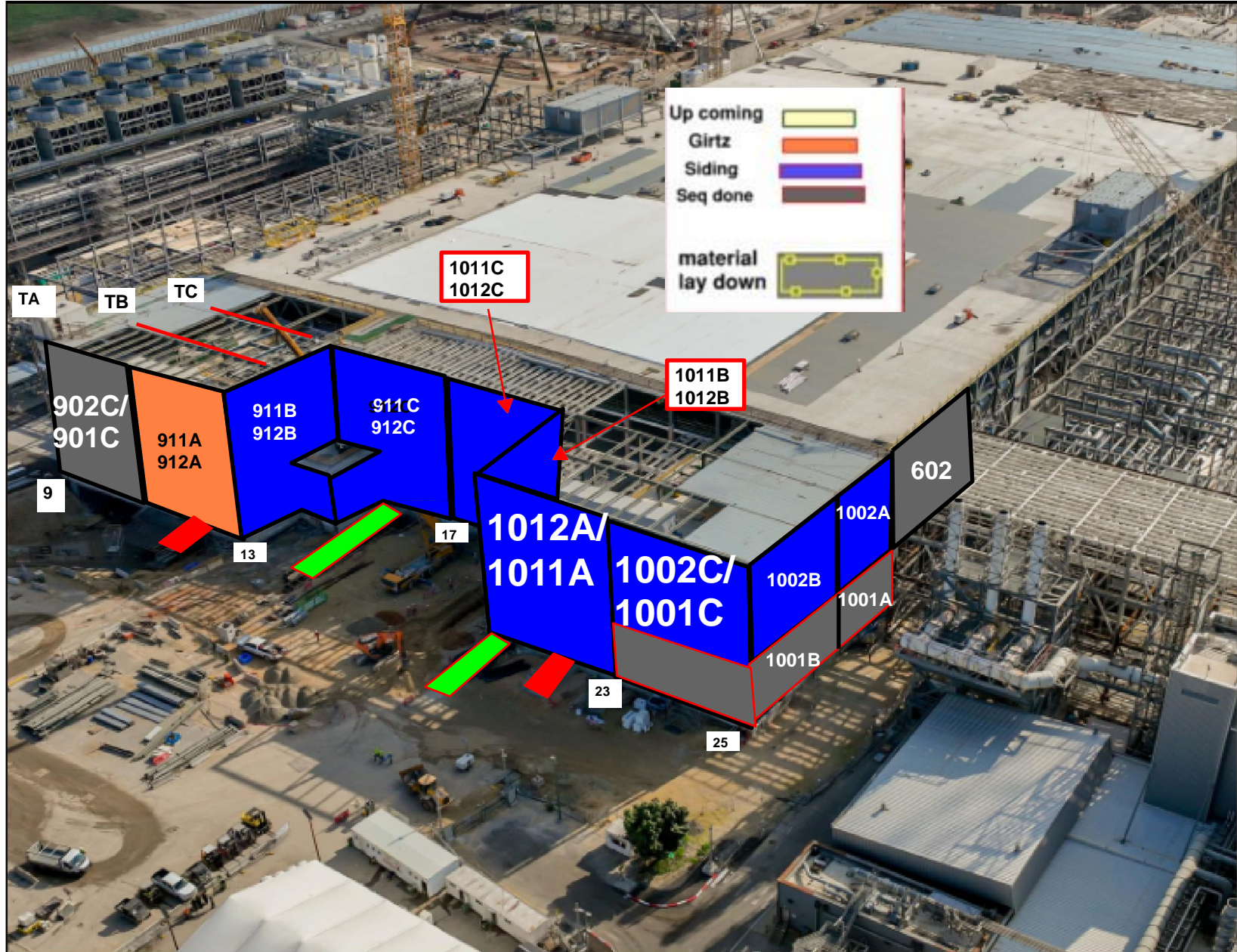
[illegible]

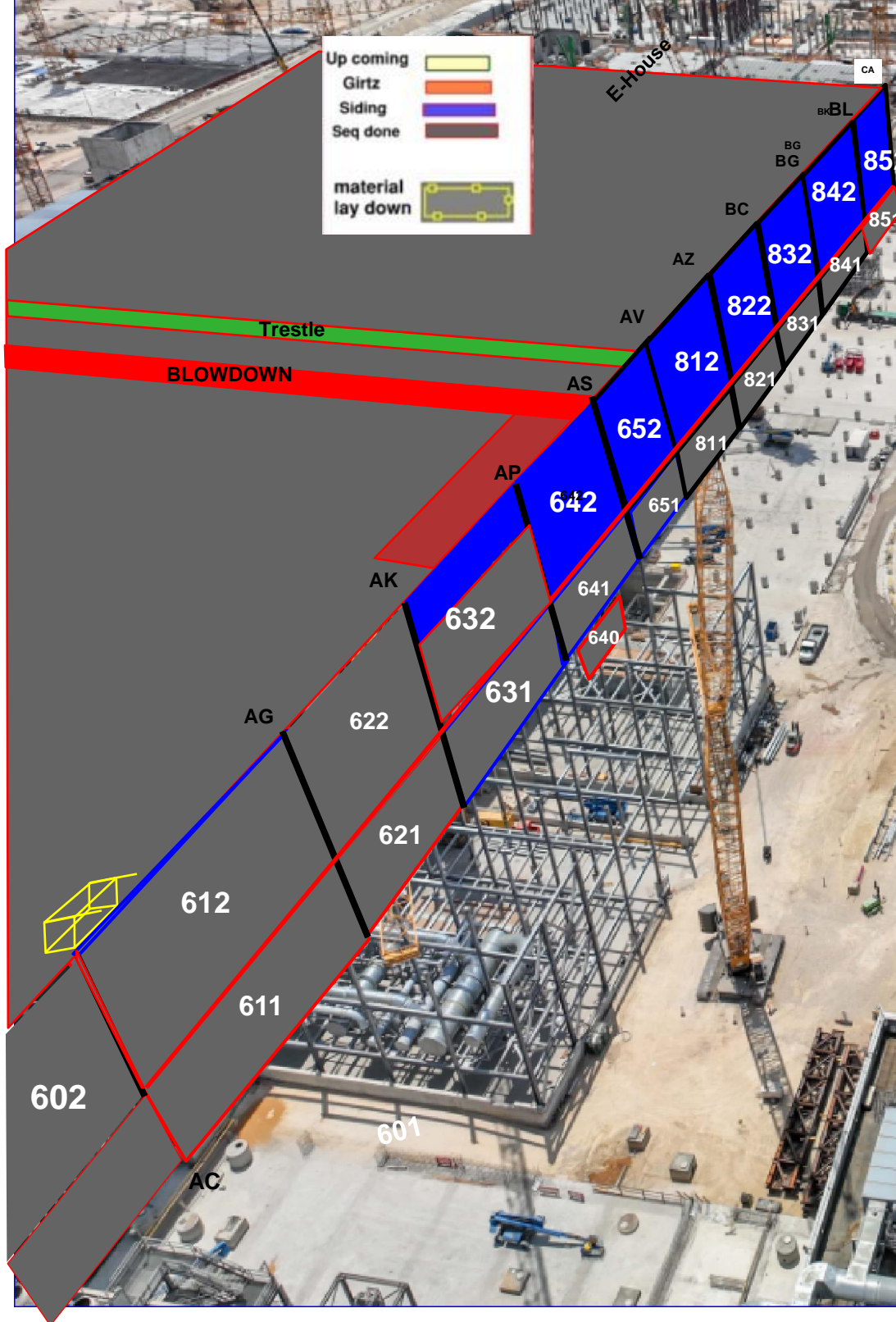
Siding - West FAB - JYG

[illegible]



Walk path

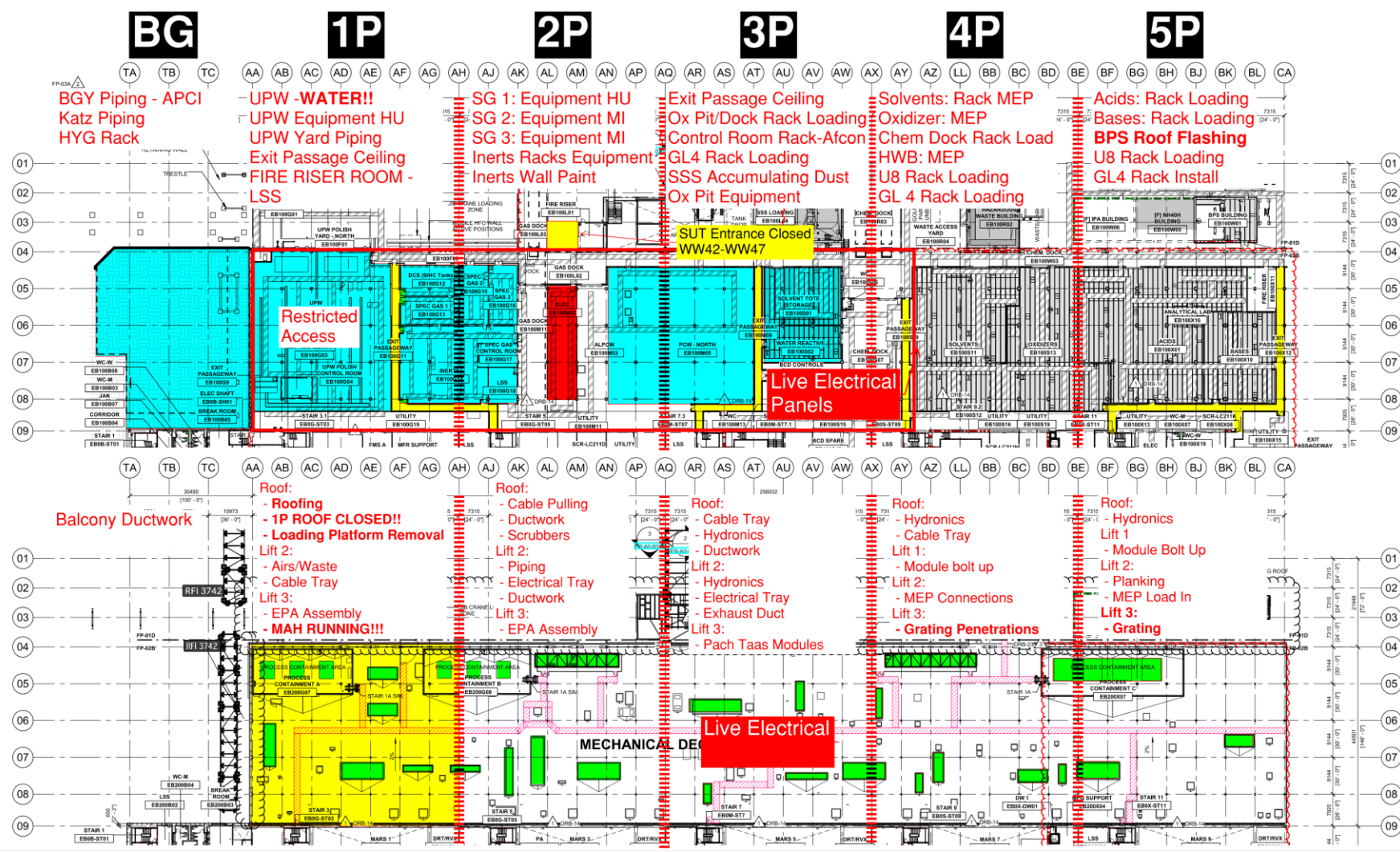




PSSS.1

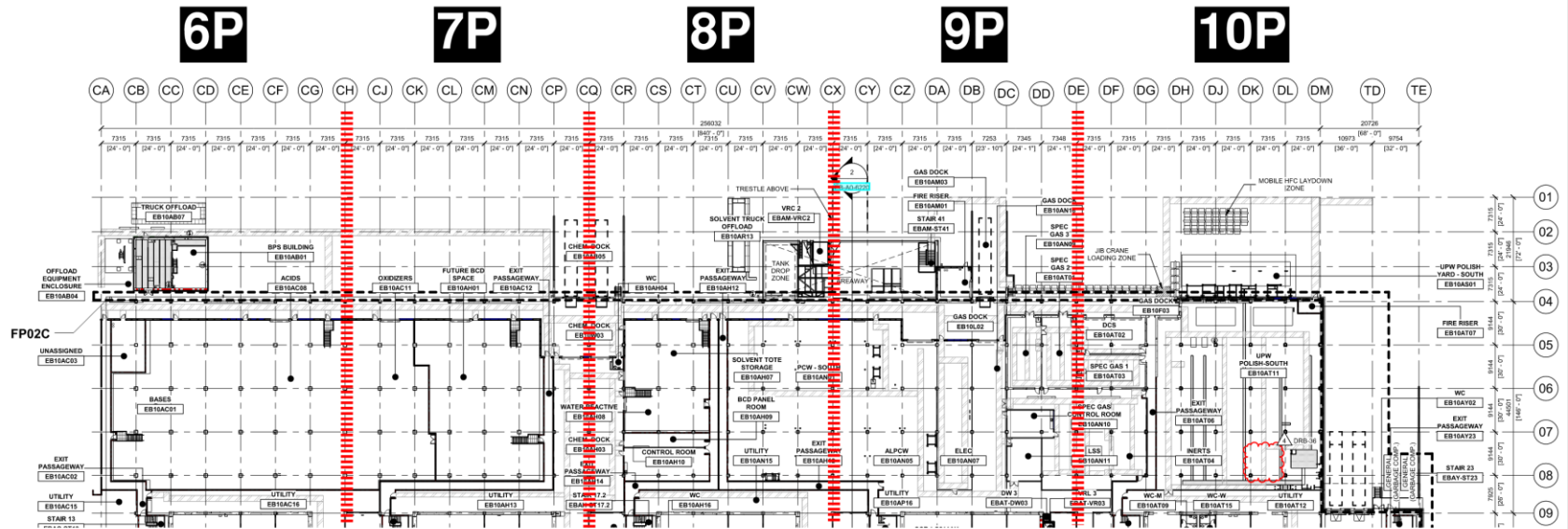
Utility Level 1YA

PSSS Roof 2SA

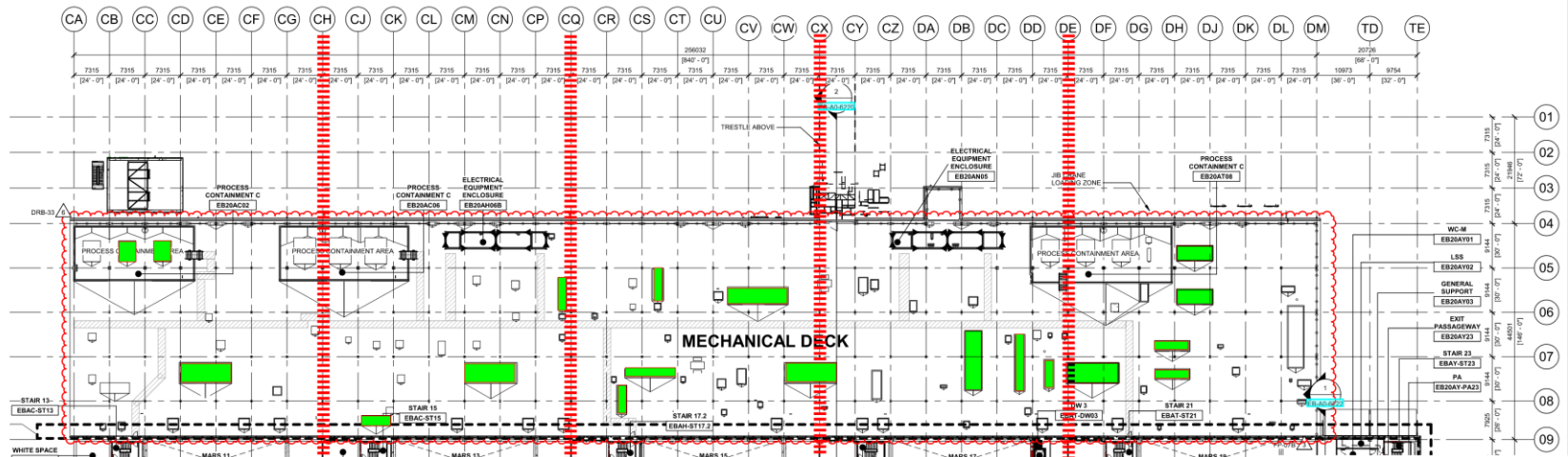


PSSS.2

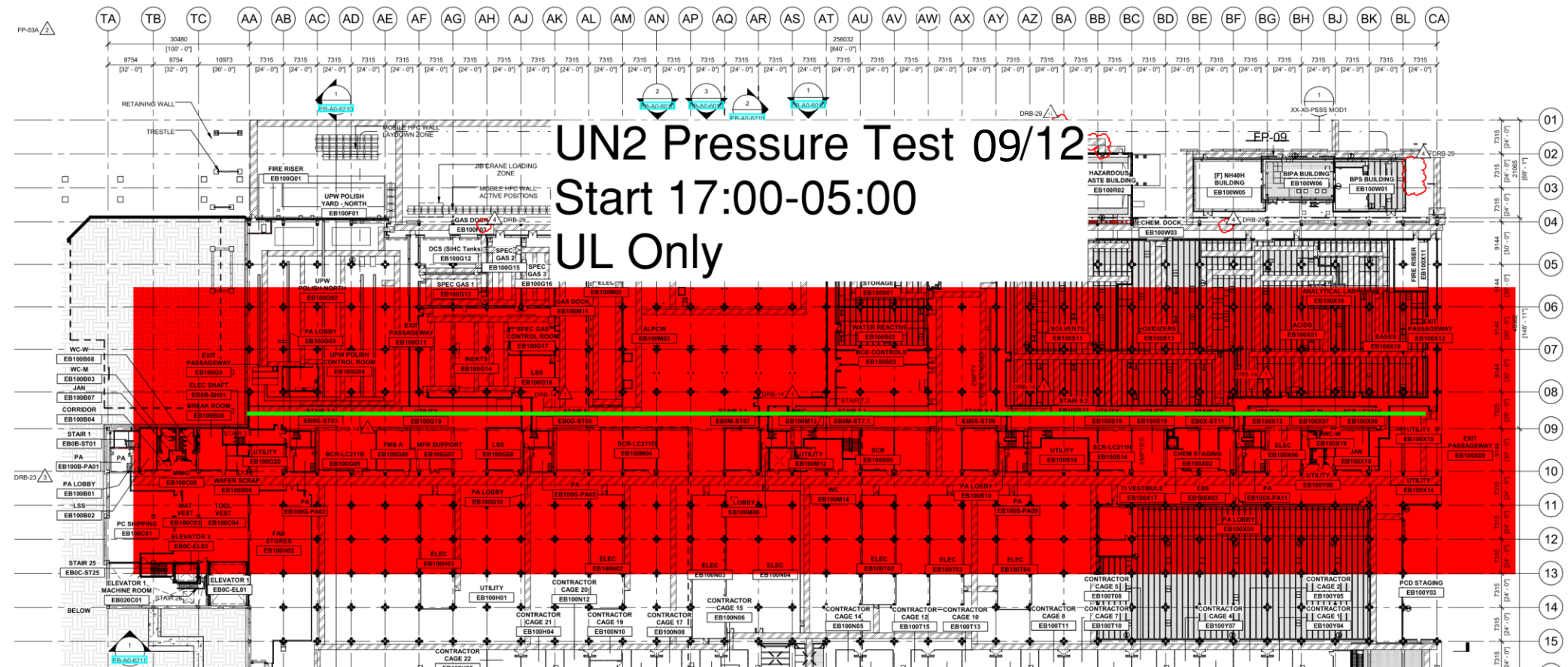
Utility Level
1YA



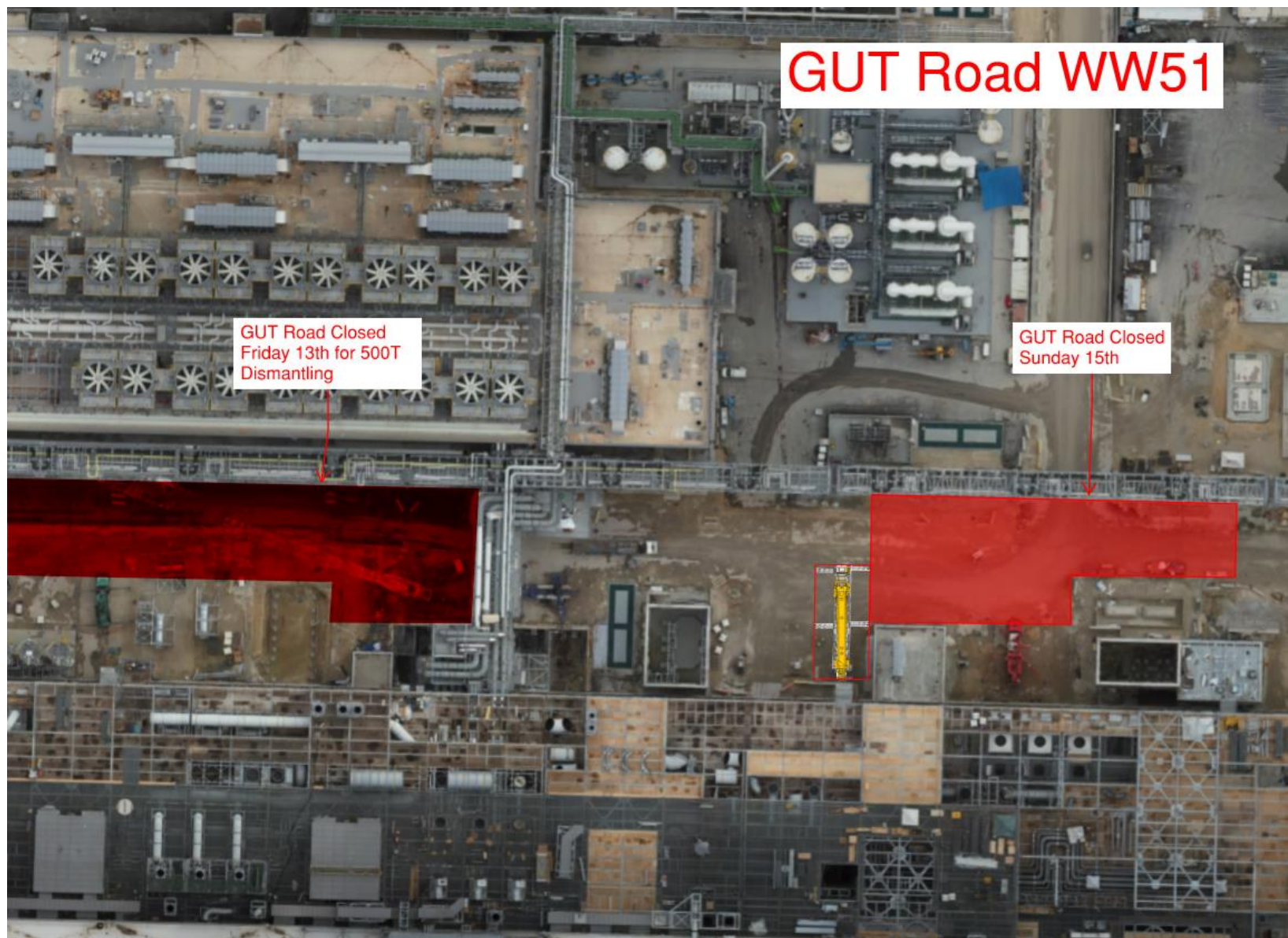
PSSS Roof
2SA



PSSS.1 UN2 Pressure Test



500T
Moving
Dec.
13-15





WJG 01J, 02J LIFT 2 & 3



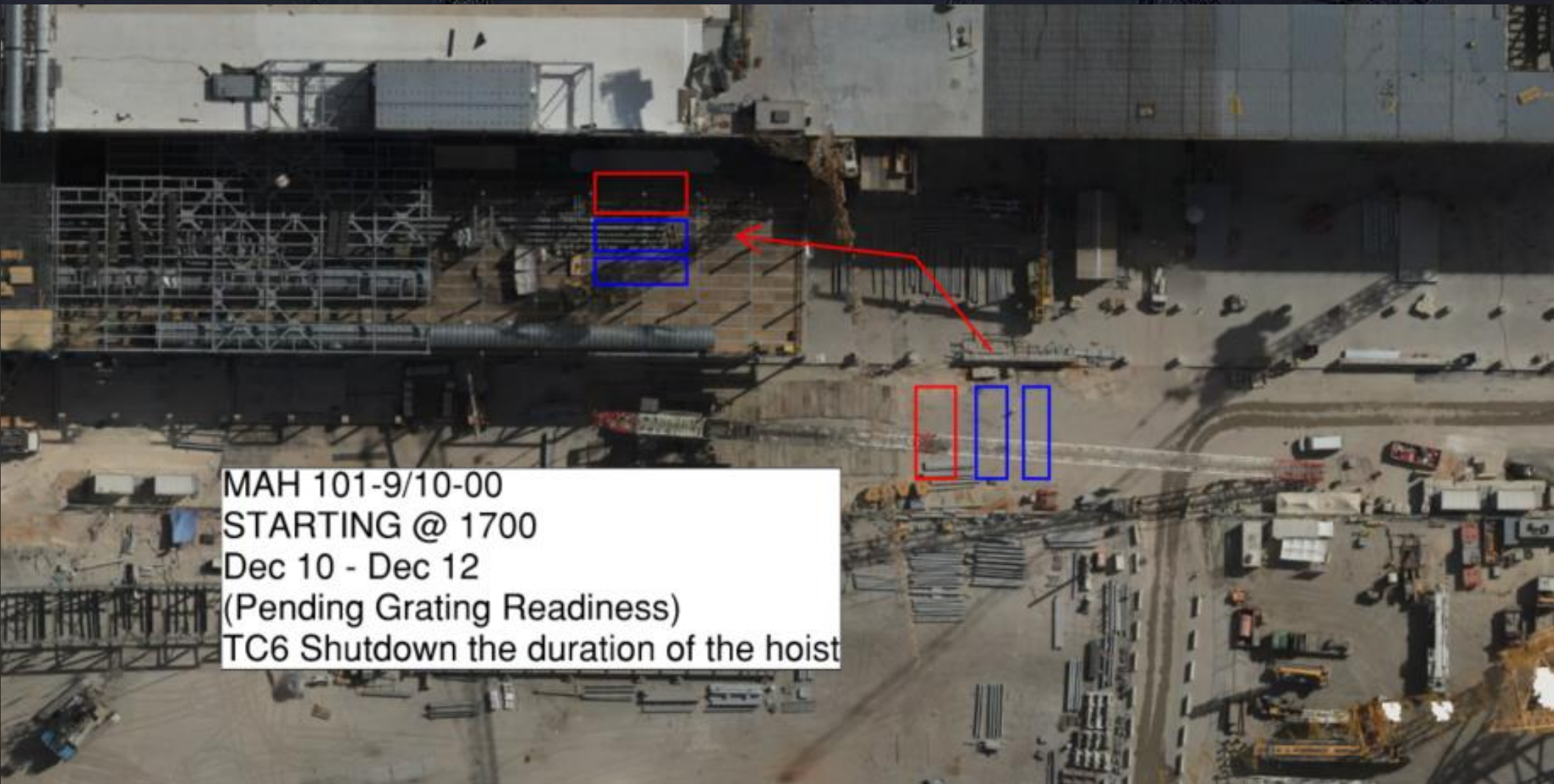


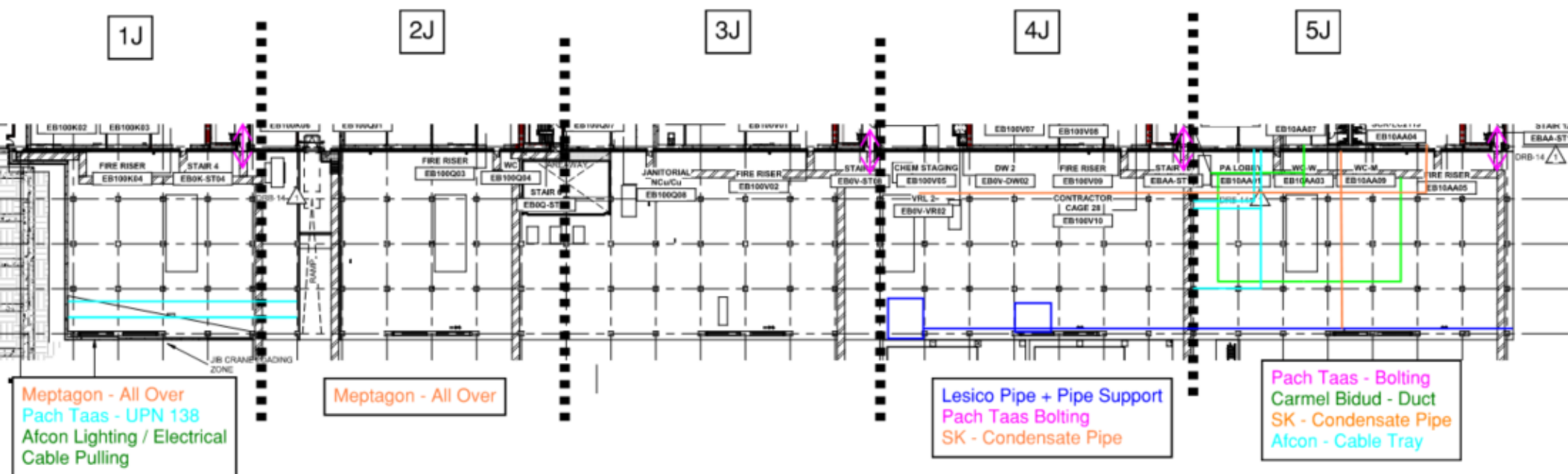
WJG 03J, 04J, 05J LIFT 2 & 3





MAH101-9/10-00 Set WW50







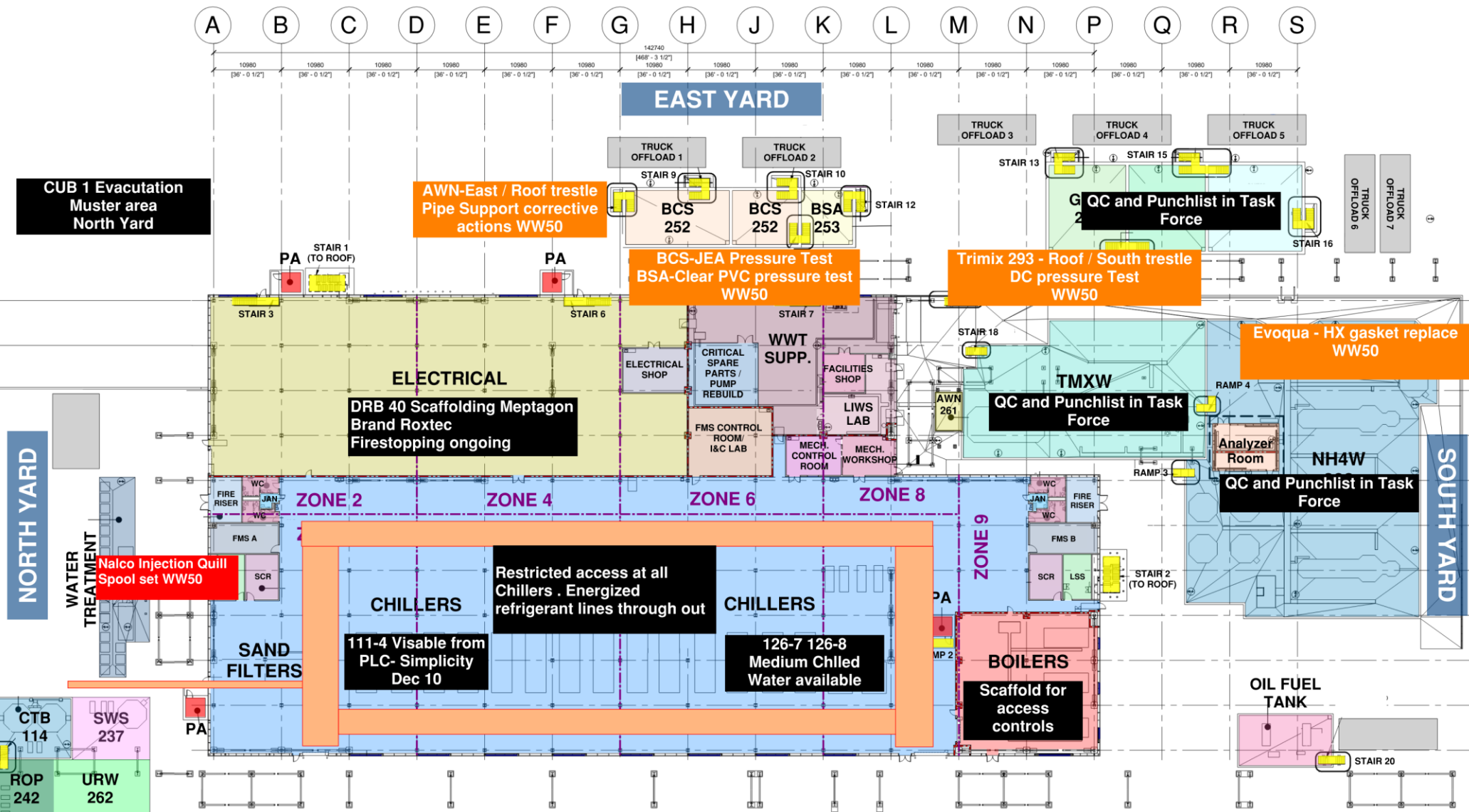
CC3800 DEMOB WW51



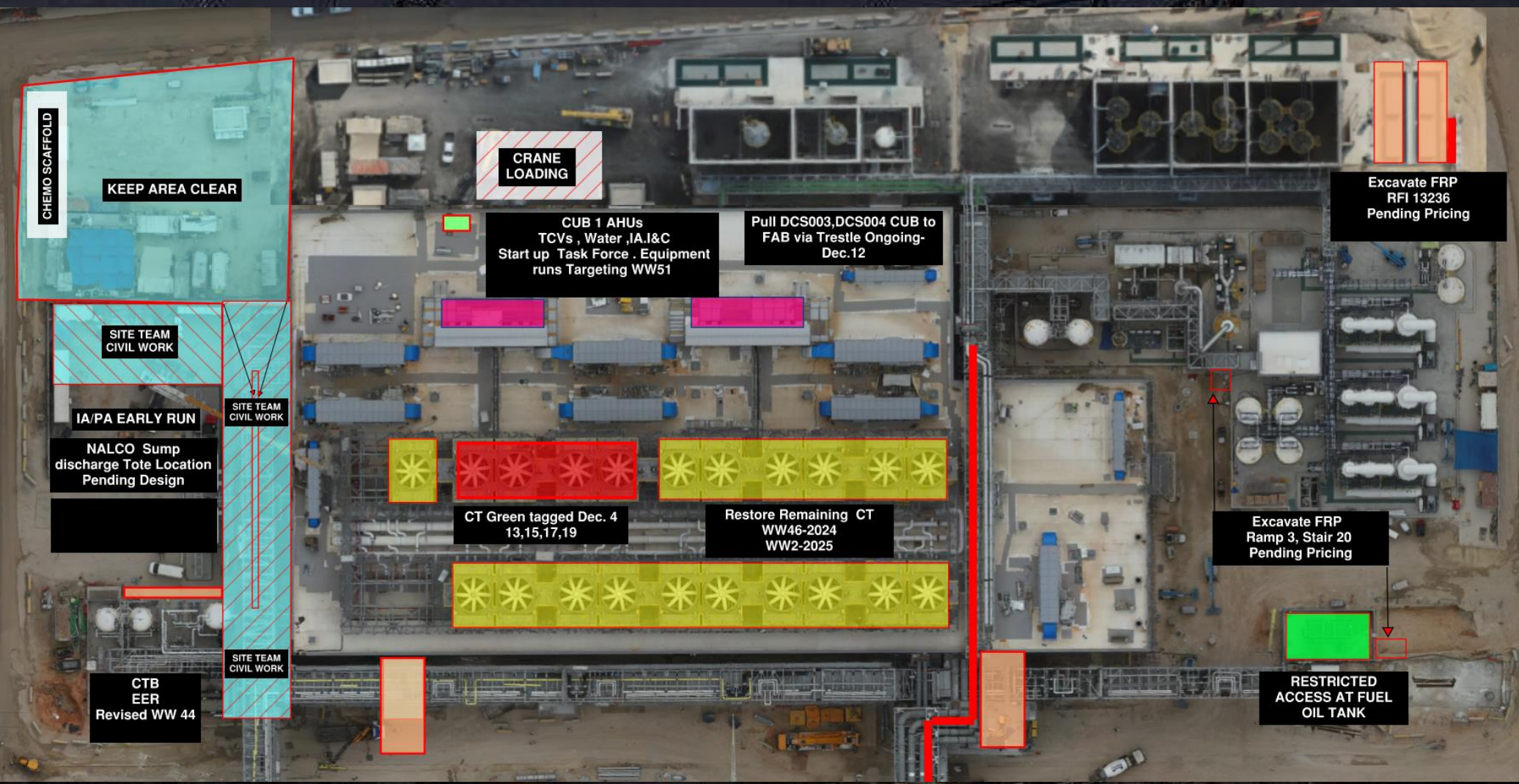


CUB 1

CUB COORDINATION MAP

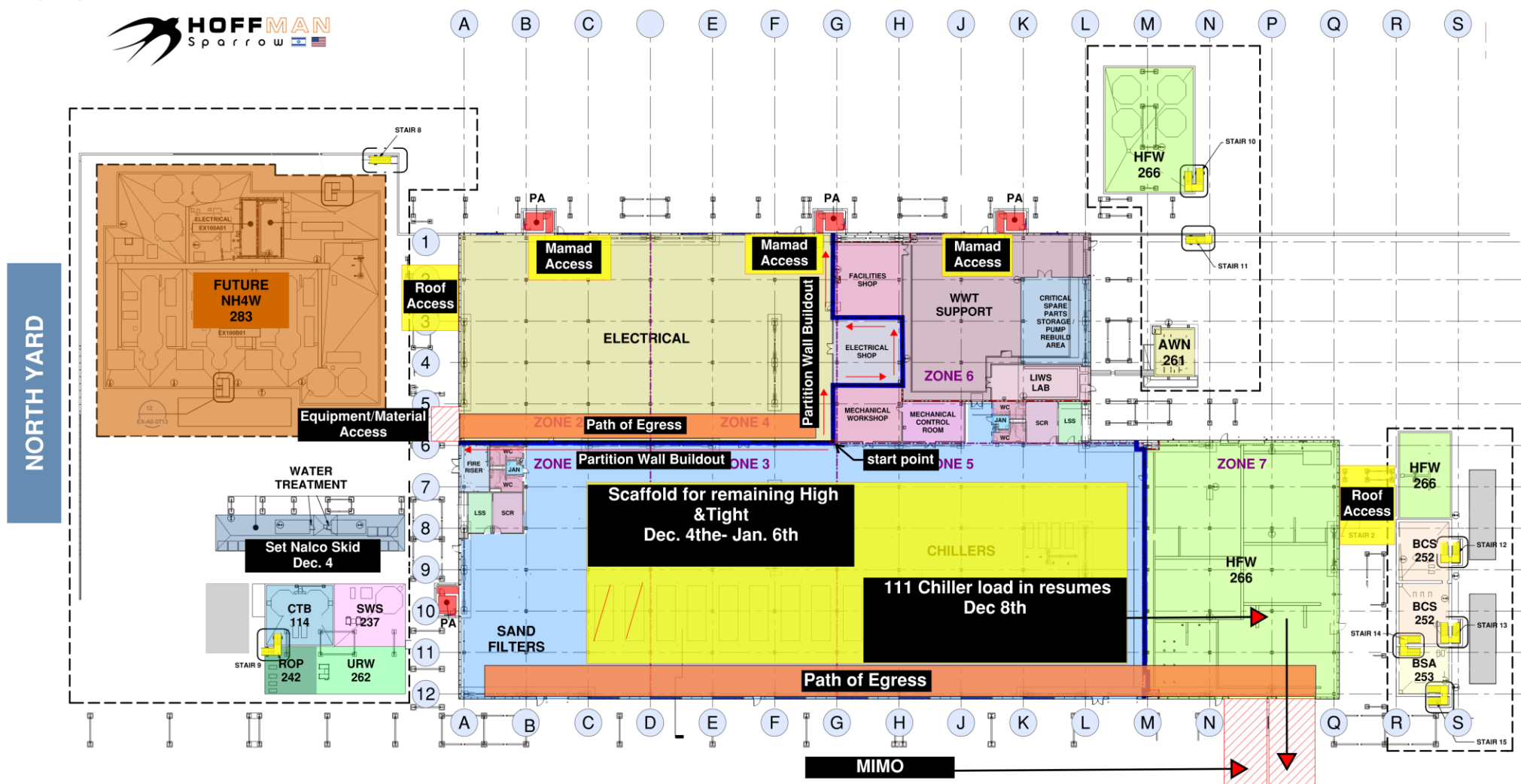


CUB 1 – EXTERIOR/ROOF



CUB 2- Load in and H&T

CUB 2 COORDINATION MAP

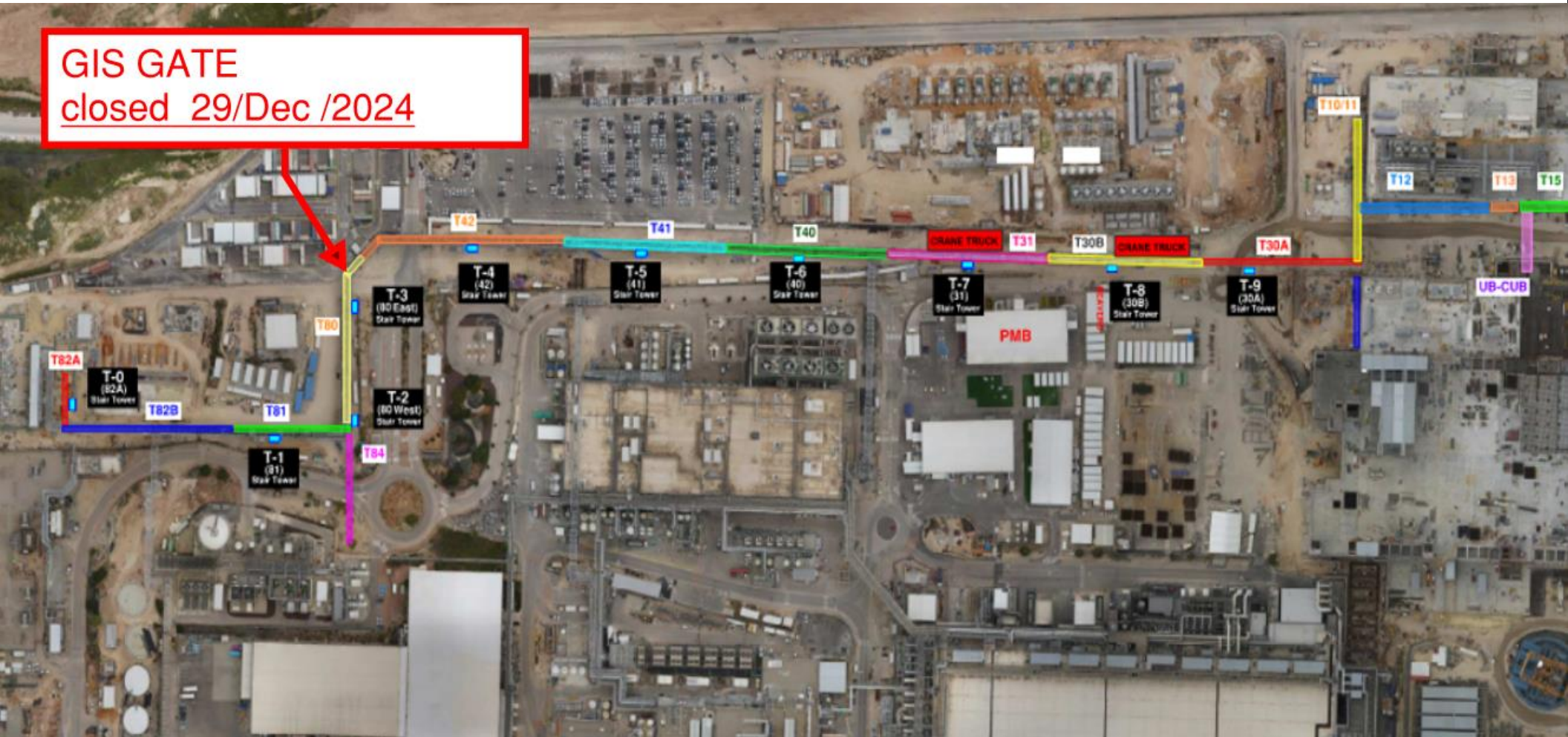


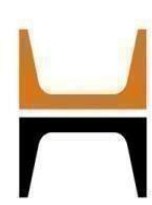
CUB 2 – EXTERIOR/ROOF





GIS GATE
closed 29/Dec /2024





HOFFMAN CONSTRUCTION COMPANY



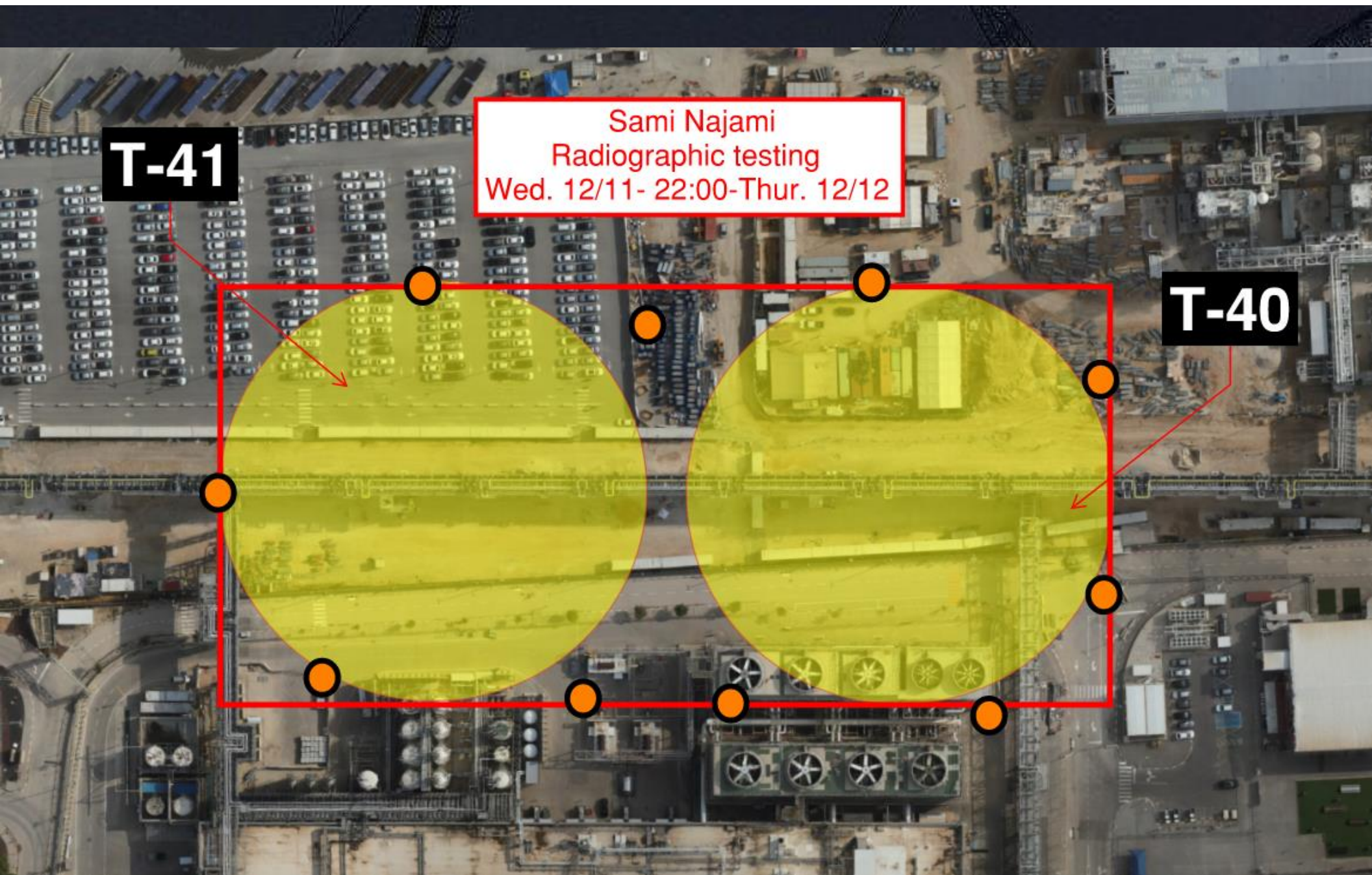
HOFFMAN
Sparrow



T-41

Sami Najami
Radiographic testing
Wed. 12/11- 22:00-Thur. 12/12

T-40



Truck will hold outside of Gate B for ~30 min. while Siemens attaches lifting Lugs

E House Deliveries
00:00 to 01:00
Arrival Time.

On Site Dates:

- 1. Dec -11th
- 2. Dec -17th
- 3. Dec - 19th
- 4. Dec - 24th
- 5. Dec - 30th
- 6. Jan - 2nd
- 7. Jan - 7th
- 8. Jan - 10th

Truck Turn
Around

Tandem Mobile
Offload 4,5,6

Sarens
Offload
1,2,3,7,8

E House
Offload/Staging

Intel Kiryat Gat

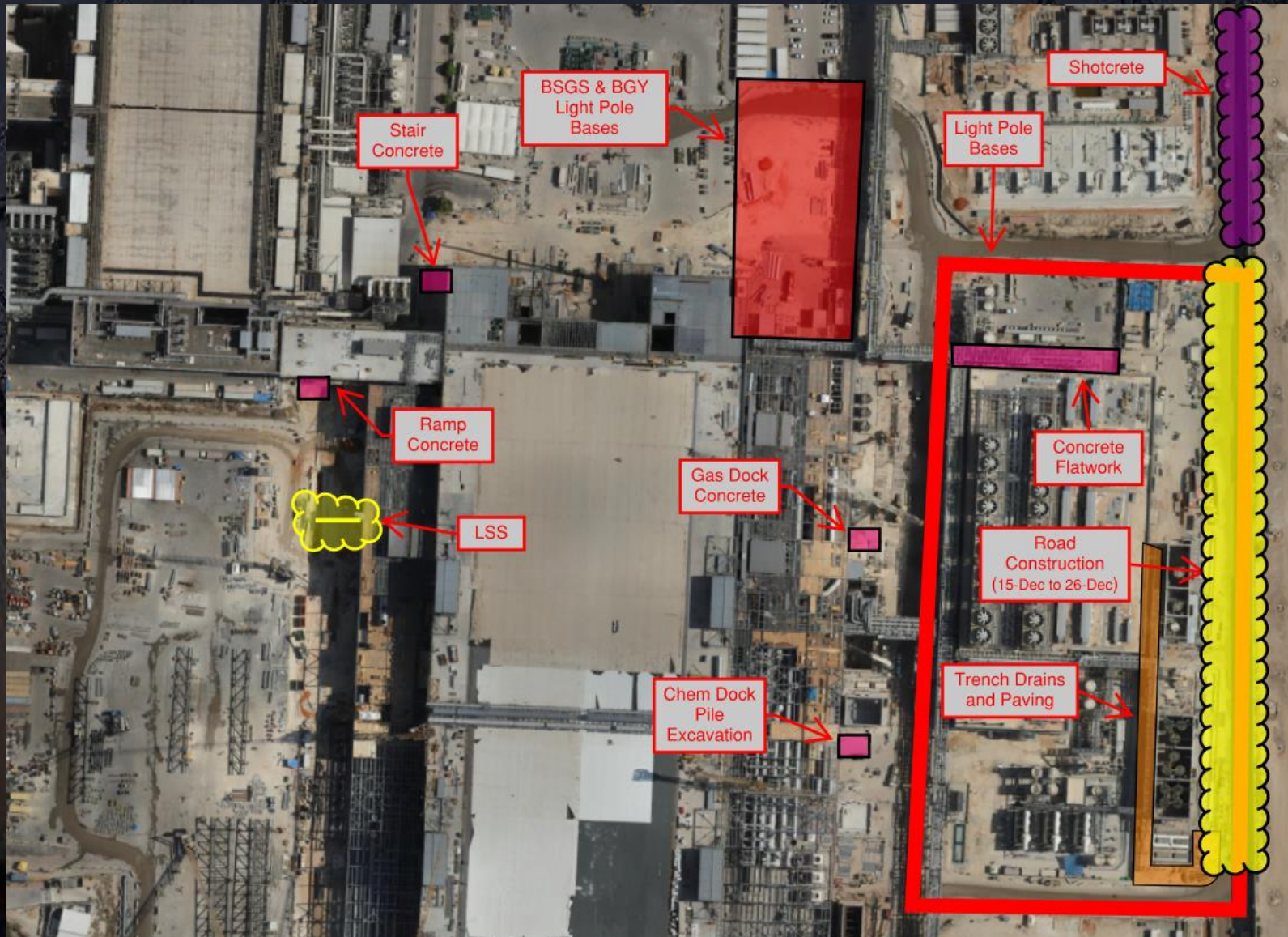
FAB-28



Daily Coordination Meeting

Site Logistics

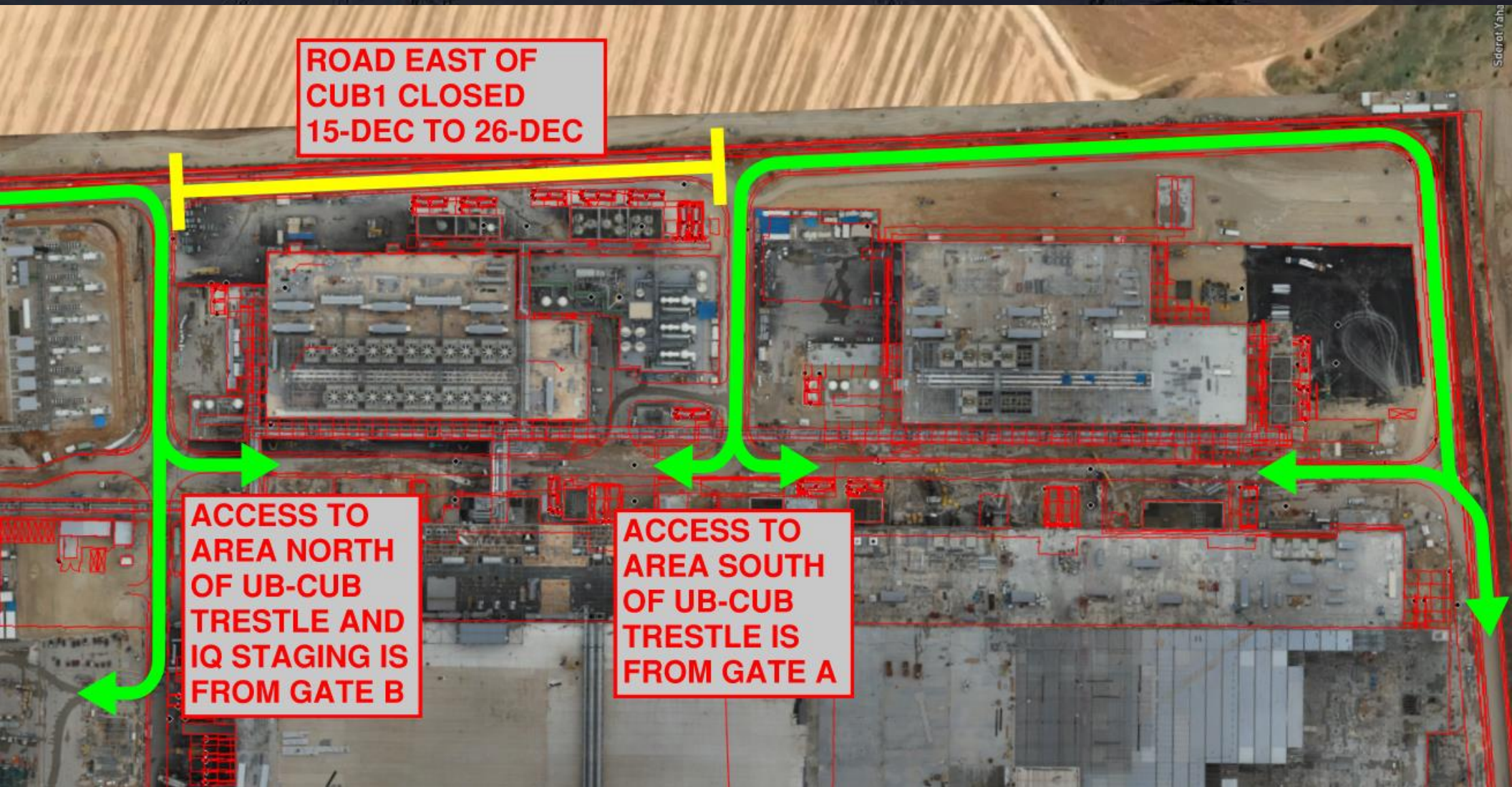
North



Daily Coordination Meeting

Site Logistics

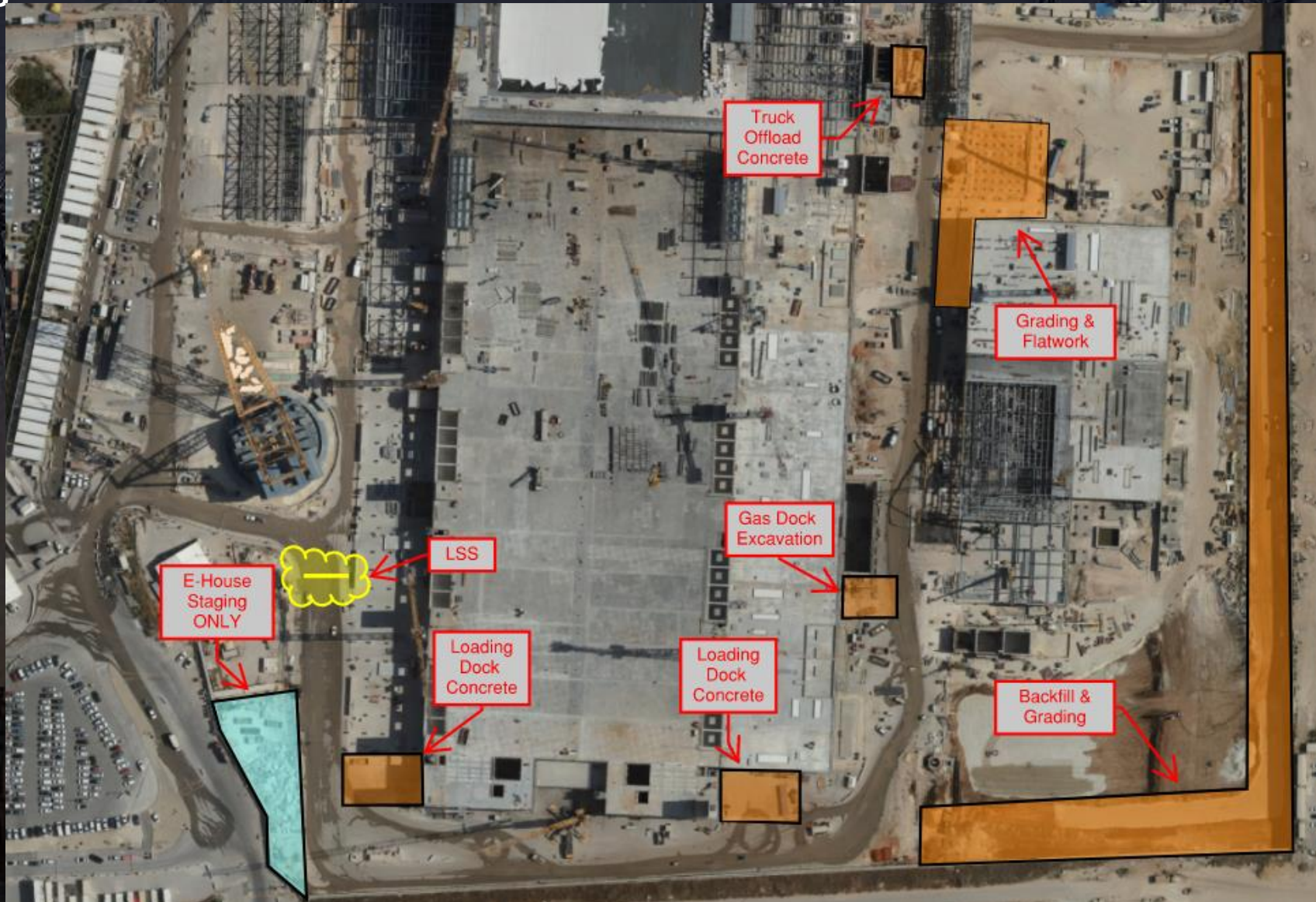
East CUB1 Road Closure



Daily Coordination Meeting

Site Logistics

South



Stop the Drop

- It is more than tethering and barricading.
- If you are working with something or somewhere that has the potential to fall through gaps in the floor, through grating, over the guardrail, etc. you must have protections in place to stop your tools and material from falling.
- This also includes maintaining our housekeeping and proper material storage in these areas to ensure that something cannot become dislodged and fall down below.



Not Stopping the Drop



Daily Coordination Meeting



14:00 Sign In