

# Daily Coordination Meeting

## General Topics:

- 17 Million Safety Working Hours BBQ Lunch on Tuesday (16-7-24) – **Volunteers Needed!**
  - 11 HB, 2 Elram, 2 SK, 1 Afcon, 1 MB, 1 HSAI



**HOFFMAN CONSTRUCTION COMPANY**



17 MILLION SAFETY  
WORKING HOURS  
BBQ LUNCH!!!

16.07.2024







LUNCH WILL BE SERVED IN 4 DIFFERENT SHIFTS.  
EACH SHIFT WILL HAVE A SPECIFIC WRIST BAND COLOR  
(WILL BE PROVIDED BY THE SAFETY TEAM)

11:30 - 12:15 GROUP A (BLUE)  
12:15 - 13:00 GROUP B (GREEN)  
13:00 - 13:45 GROUP C (YELLOW)  
13:45 - 14:30 GROUP D (ORANGE)  
21:00 NIGHT SHIFT

See next page  
for GROUP shift hour



LOCATION AND ENTRANCES  
FULL PPE REQUIRED WHILE  
WALKING THROUGH JOB SITE!!!

- \*Group shift will be updated



A.S Barzel	A
Afcon Contracting Services	
Afcon Control and Automation Ltd	
Avi Cranes	
BCT PIPELINE PROCESSES LTD	
BRAND INSUSTRIAL LTD	
ByNet System Application Ltd	
Hoffman Structures of America, Inc	

Carmel Bidud LTD (FAB + PSSS)	C
CHEMO AHARON LTD (FAB)	
COMBE LTD	
D&P Clean Room Ltd	
Derech Afar LTD	
DVIR.IE LTD	
E.L Fireproof LTD	
ELECTROSAFE LTD	
Electra Elevator	
EL-MORE ELECTRIC	
ELRAM PROJECT LTD	
ETC Systems LTD	
ES Entry Systems LTD	
GLOBUS WORLDWIDE LOGISTICS	

Hoffman Construction	B
Stage Design Ltd	
Talad T.S LTD	
TEAM3 LTD	
TM TEAM LTD- Job service	
TM TEAM LTD	
TZUR ESH PROJECTS LTD	
W&W - AFKO Steel LLC	
INTEL	
JACOBS	
HB	
QA- AMTS, Q+,DPS	

HYG STEEL 1990 LTD	D
Katz Arie Stainless Steel	
Lesico LTD	
MALCHIMIM BADAROM	
MEGASON ELECTRONIC & CONTROL 1987 LTD	
Meptagon LTD - I&C/ LSS	
Newco - Tec LTD	
Olizki Infrastructures LTD	
ORIAYN ADVANCED TECNOLOGY SYSTEMS, LTD	
Pach Taas LTF (Ashkelon)	
Ranpro LTD	
RESHATOT BE'ER SHEVA LTD	
Rolling Plains Constriction Inc	
Sami Najami Engineering & Project LTD	
Sela Industrial Maintenance 2006LTD	
Shuv Eli Electric Engineering Ltd	
Siemens Industrial LTD	
SIG Industrial LTD	
SK ENGINEERING & PROJECT (CUB)	
Skyline Cranes& Technologies	



# CRAFT LUNCH

## 17 Million Man-Hours

### TUESDAY – JULY 16th

11:30	12:15	13:00	13:45
A.S Barzel	HOFFMAN	Carmel Bidud LTD (FAB + PSSS)	HYG STEEL
Afcon Contracting Services	STAGE DESIGN	CHEMO AHARON LTD (FAB)	KATZ ARIE
Afcon Control and Automation Ltd	TALAD	COMBE LTD	LESICO
Avi Cranes	TEAM3	D&P Clean Room Ltd	MALCHIMIM BADAROM
BCT PIPELINE PROCESSES LTD	TM TEAM - JOB SERVICES	Derech Afar LTD	MEGASON
BRAND INSUSTRIAL LTD	TM TEAM	DVIR.IE LTD	MEPTAGON
ByNet Sestem Application Ltd	TZUR ESH	ELECTROSAFE LTD	NEWCO
Hoffman Structures of Americaw, Inc	W&W	EL-MORE ELECTRIC	OLIZKI
	INTEL	ELRAM PROJECT LTD	ORAIYN
	JACOBS	ES Entry Systems LTD	PACH TASAS
	HB	GLOBUS WORLDWIDE LOGISTICS	RANPRO
	QA- AMTS, Q+,DPS		RESHATOTO BEER SEVA
			ROLLING PLAINS
			SAMI NAJAMI ENGINEERING
			SELA
			SHUV ELI
			SIEMEINS
			SIG
			SK ENGINEERING
			SKYLINE CRANES



**HOFFMAN CONSTRUCTION COMPANY**



**Please email me to sign up to Volunteer to serve**  
**Rebecca-WeinsteinAttar@Hoffmancorp.com &**  
**Cody-Baumann@Hoffmancorp.com**





**M.B**

**Hydro test**

**3E + 3W**

**7/16**

**Start 17:00**

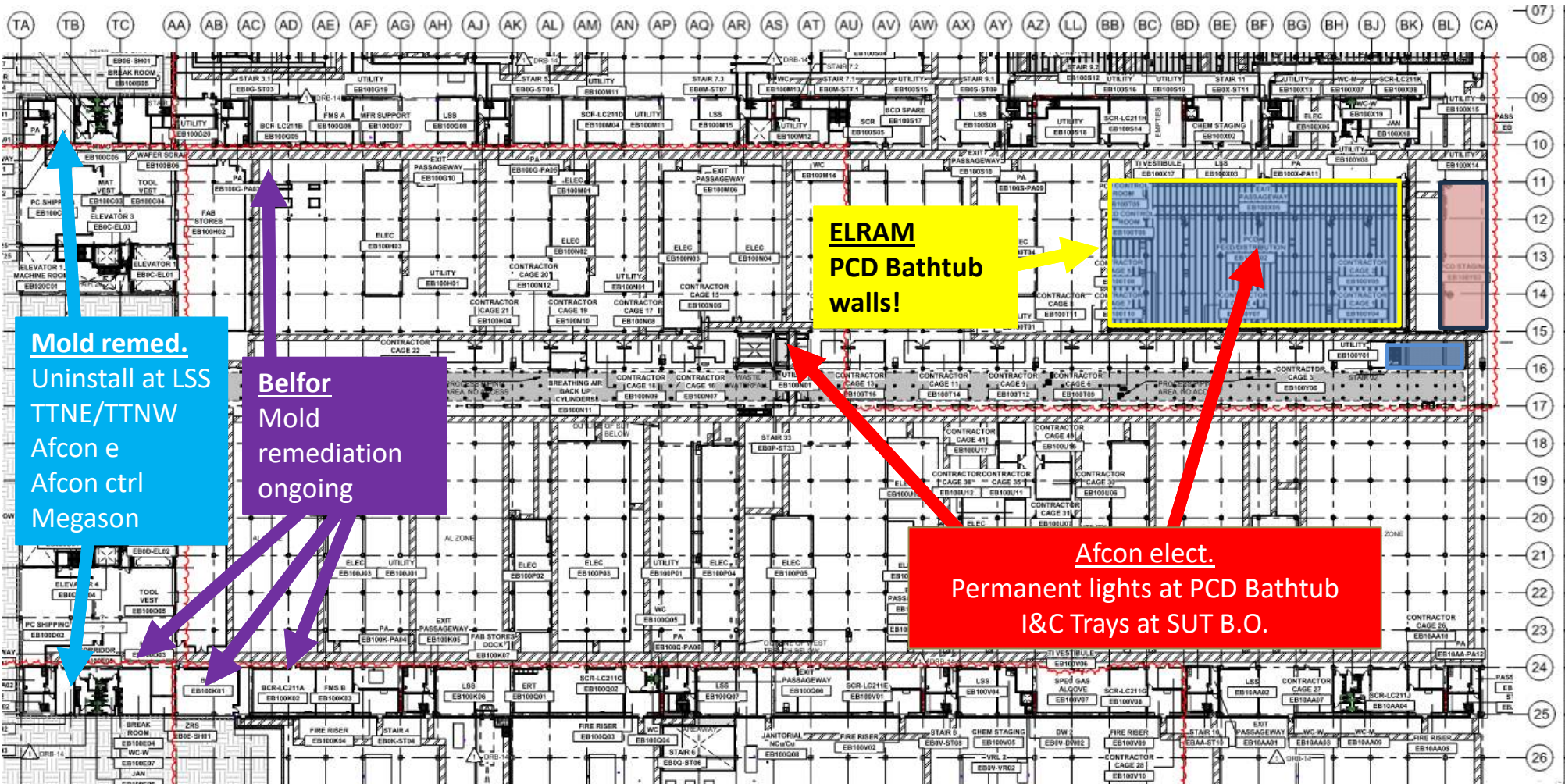
**Finish 22:00**

**3E**

**3W**

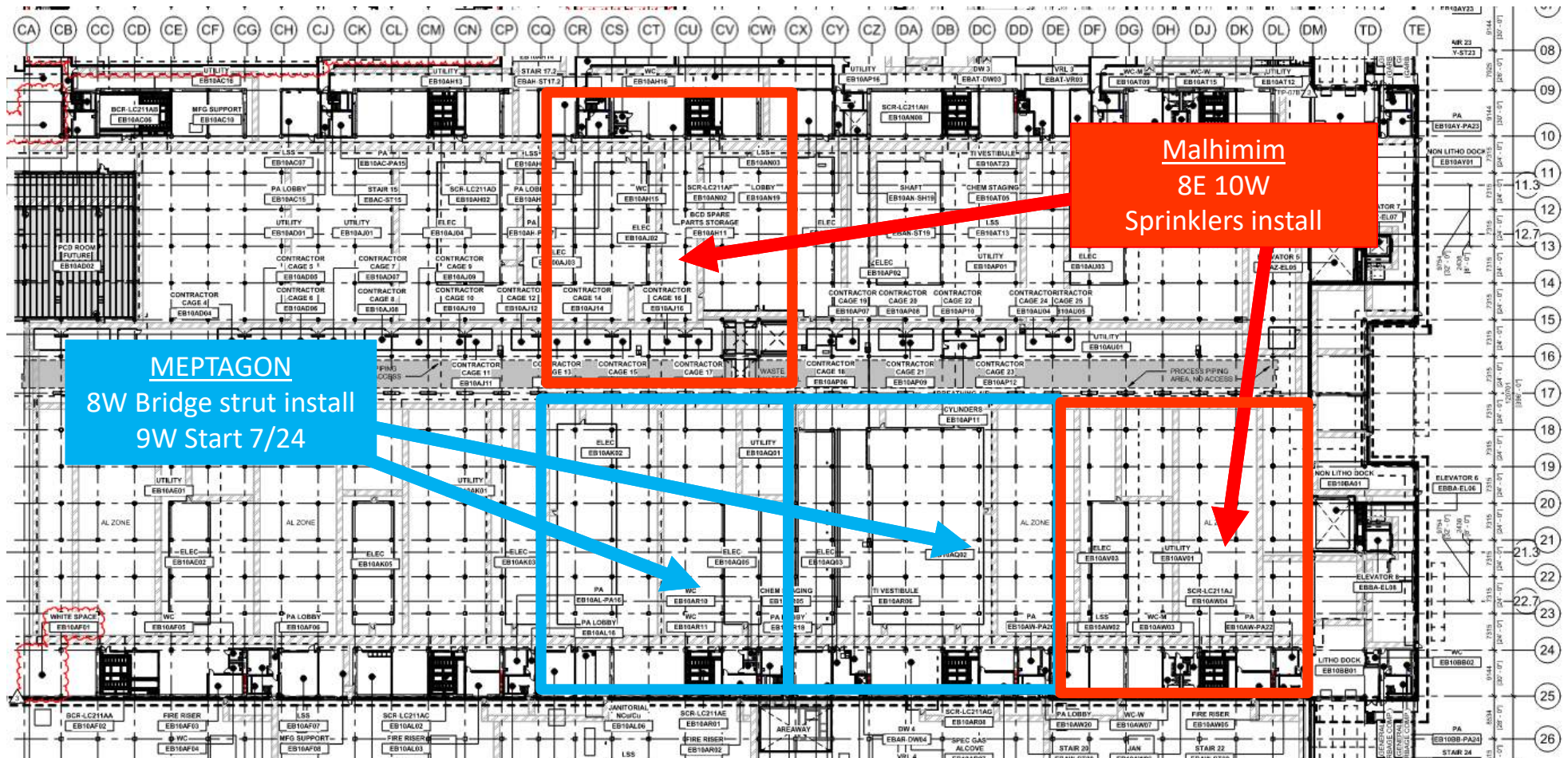


# UTILITY LEVEL MOD1

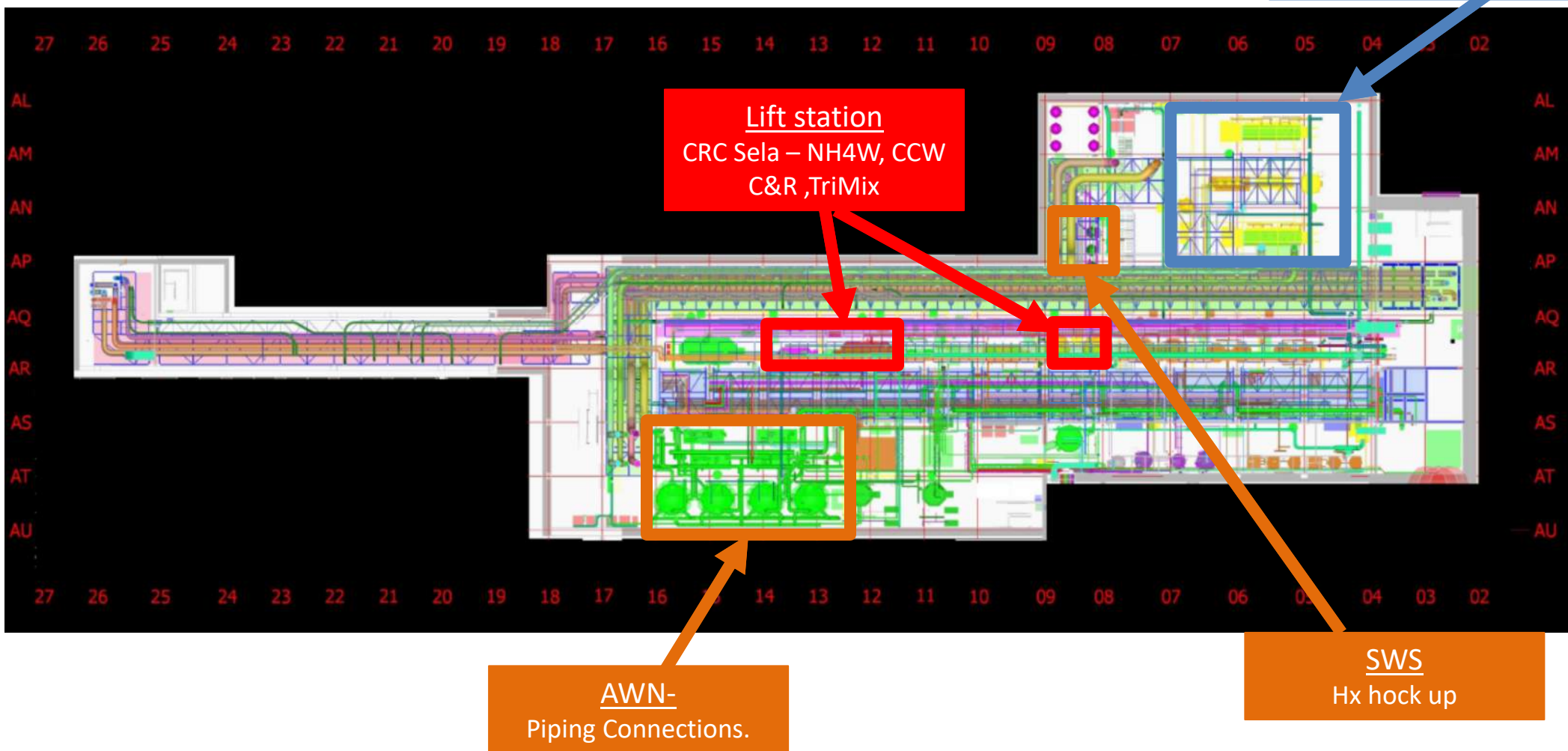




# UTILITY LEVEL MOD2

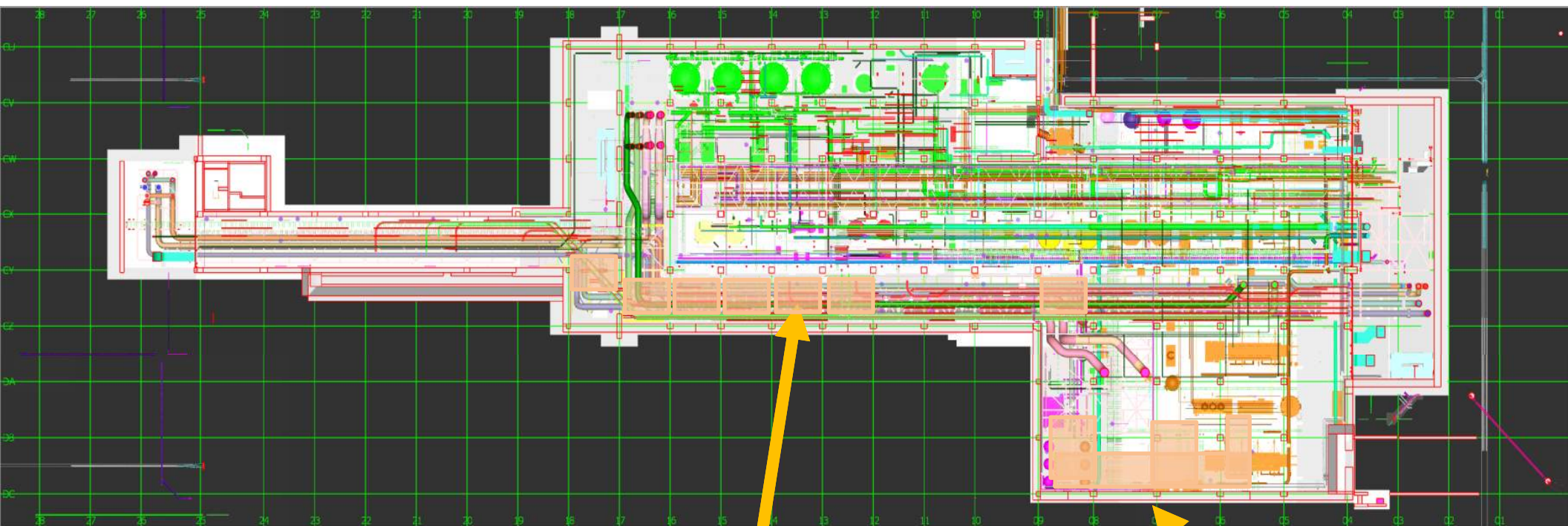


## SUT 38.1 LEVEL





## SUT 38.2 LEVEL



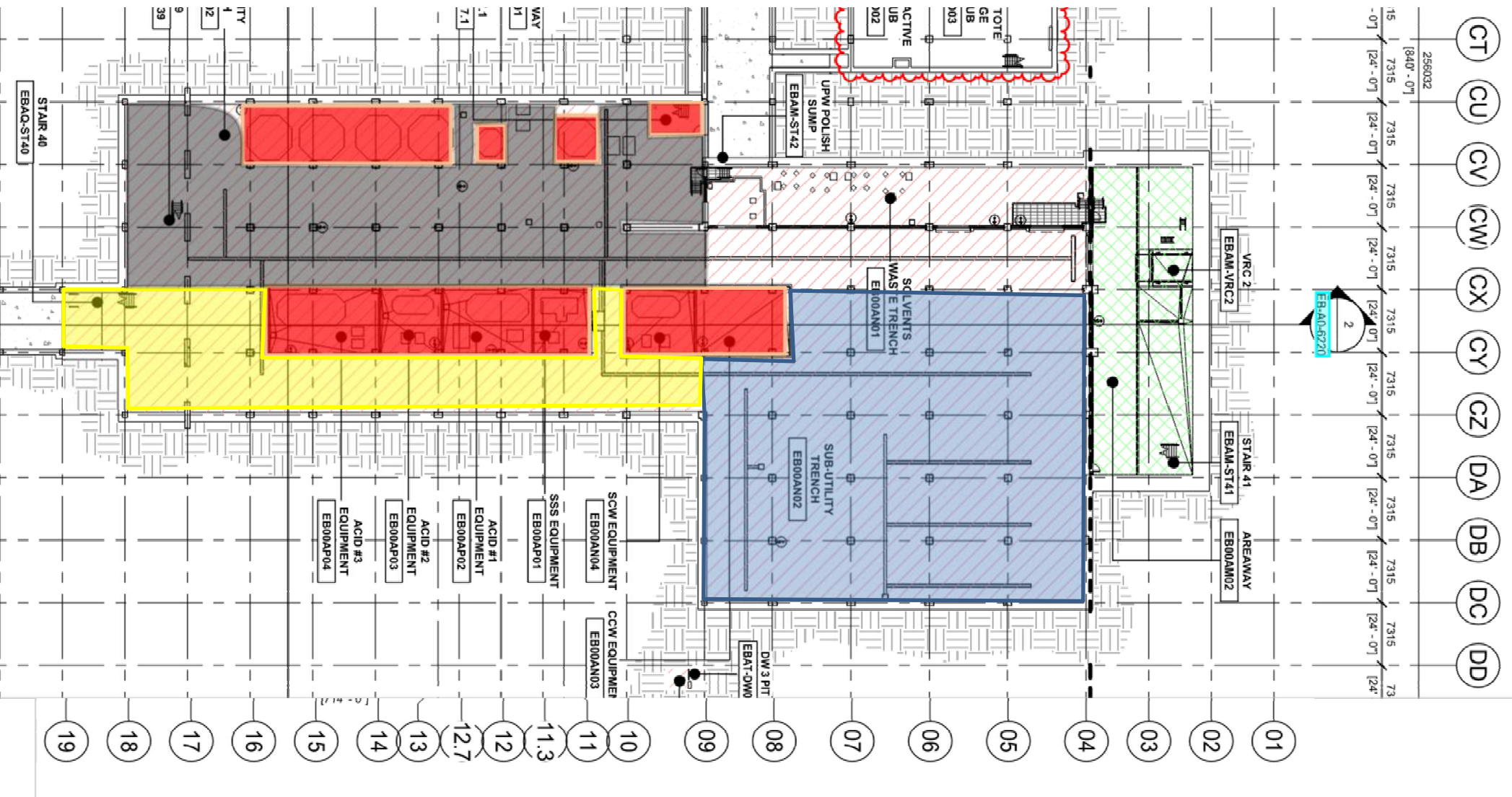
SKE  
H&T  
CRW  
Move-In date ?

Vesda  
H&T  
Move-In ??

1A Rack  
Lifting

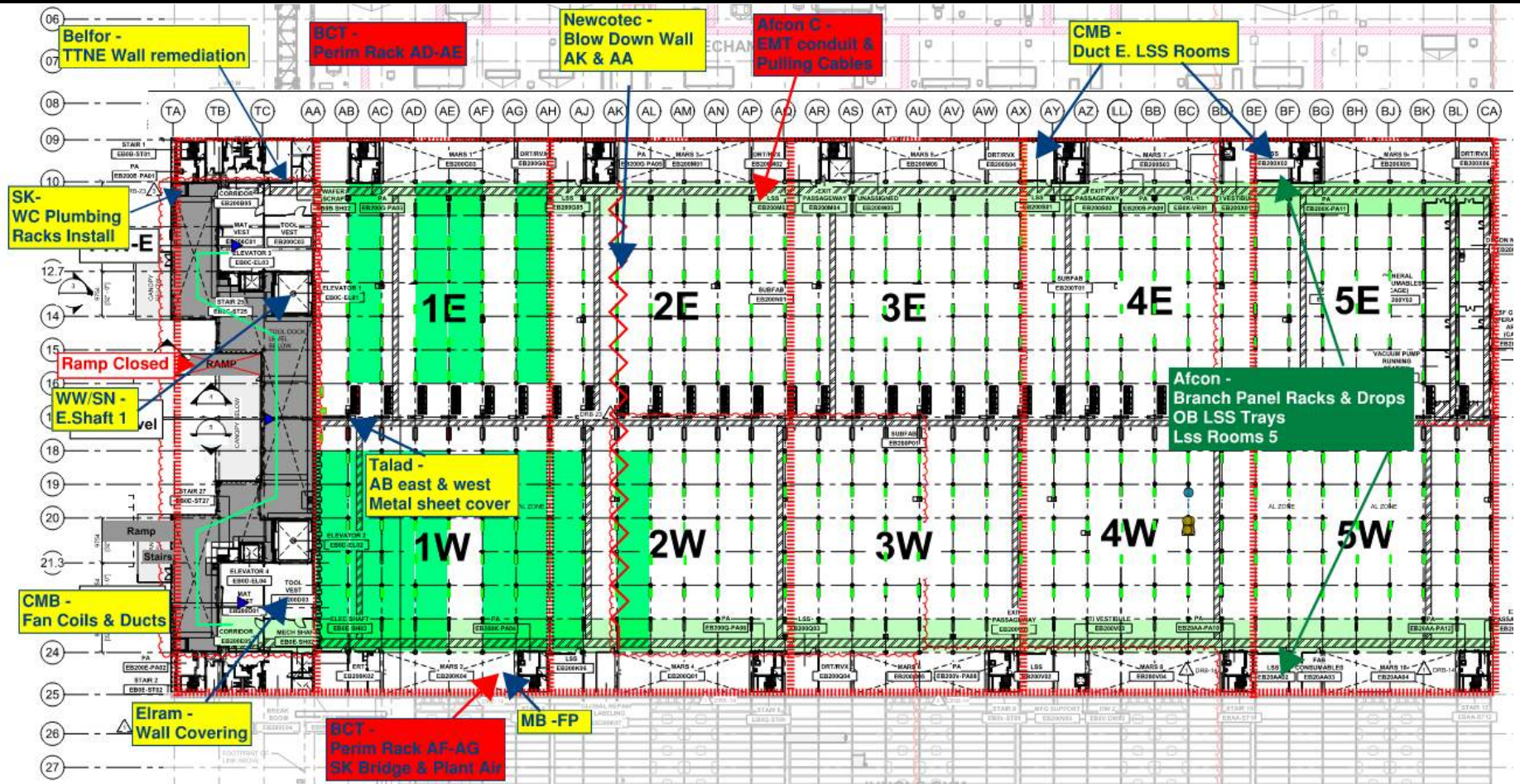
8 Rack  
Pending  
Martials

# SUT 38.2 LEVEL CRC Plan



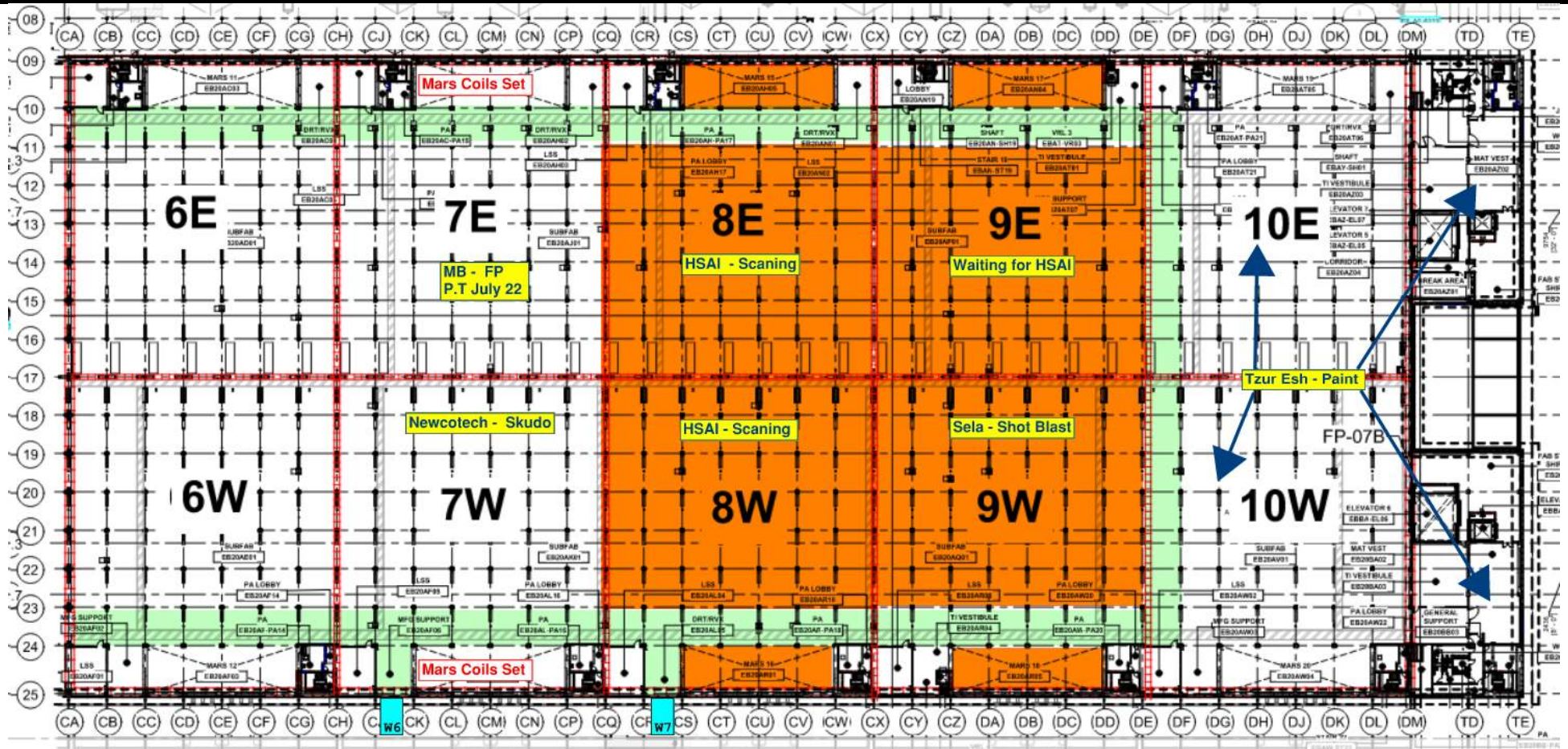


# SUBFAB BUILDOUT MOD 1





# SUBFAB BUILDOUT MOD 2





# SUBFAB 17 Line Outboard Metal Sheet Cover













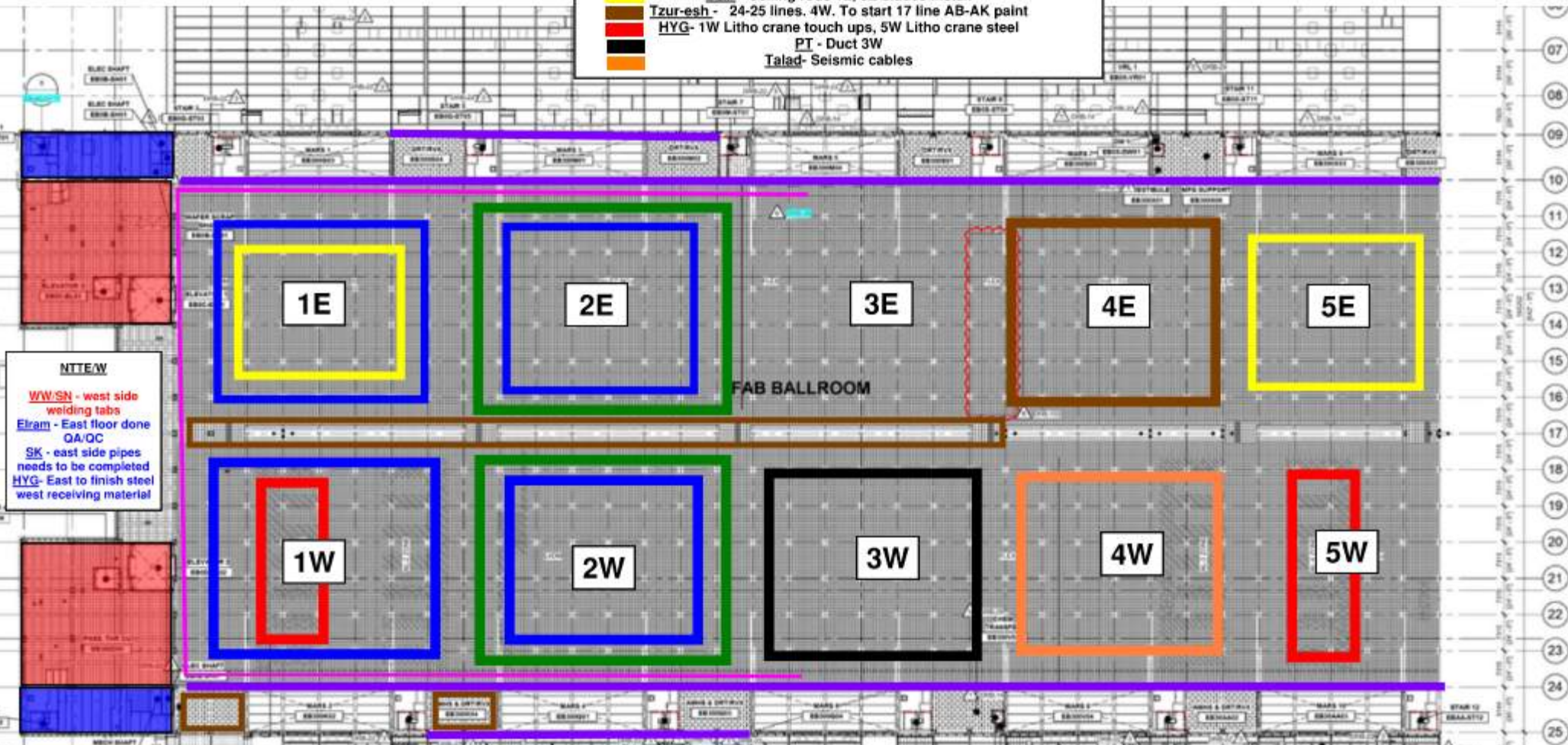
# SUBFAB 17 Line Outboard Metal Sheet Cover



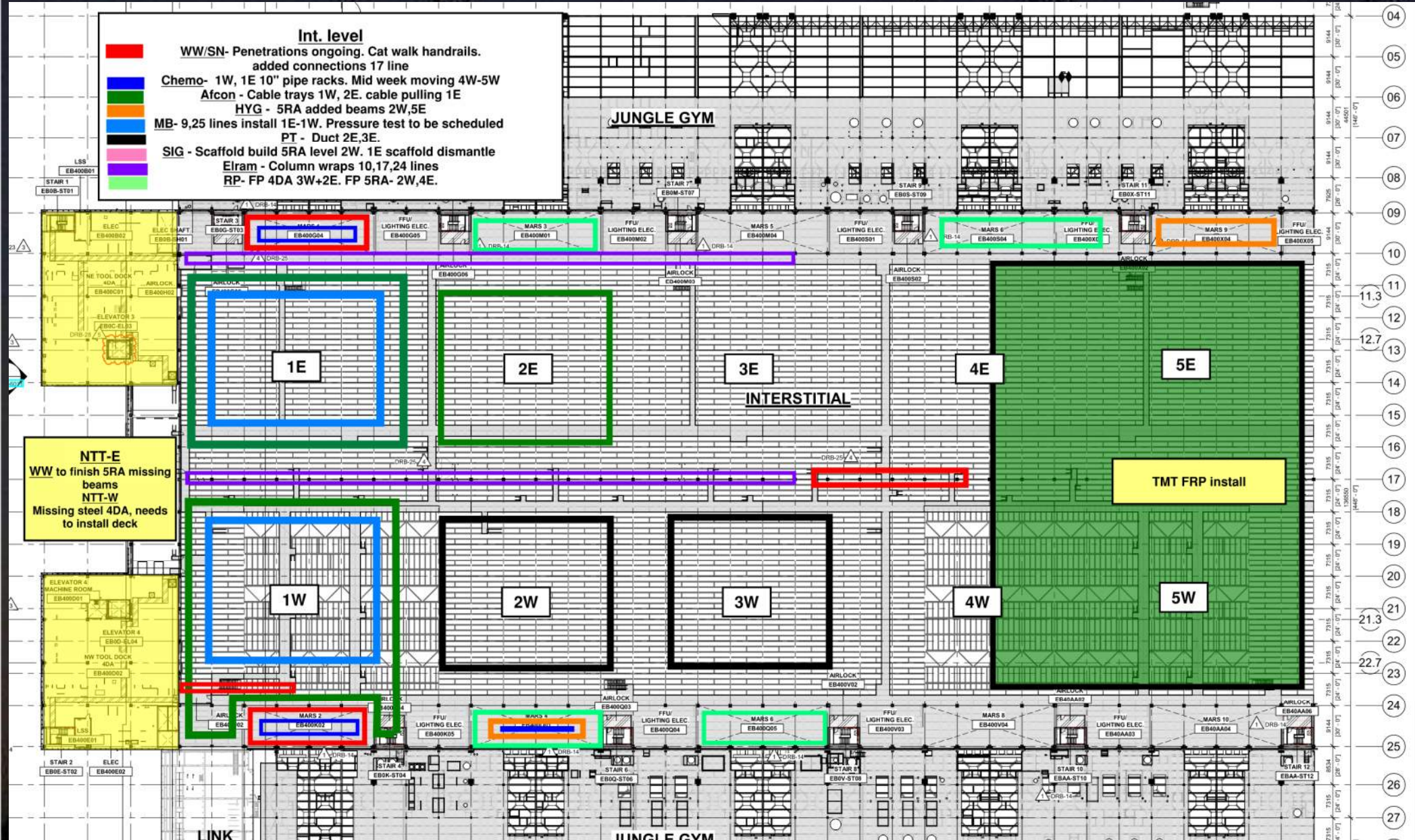




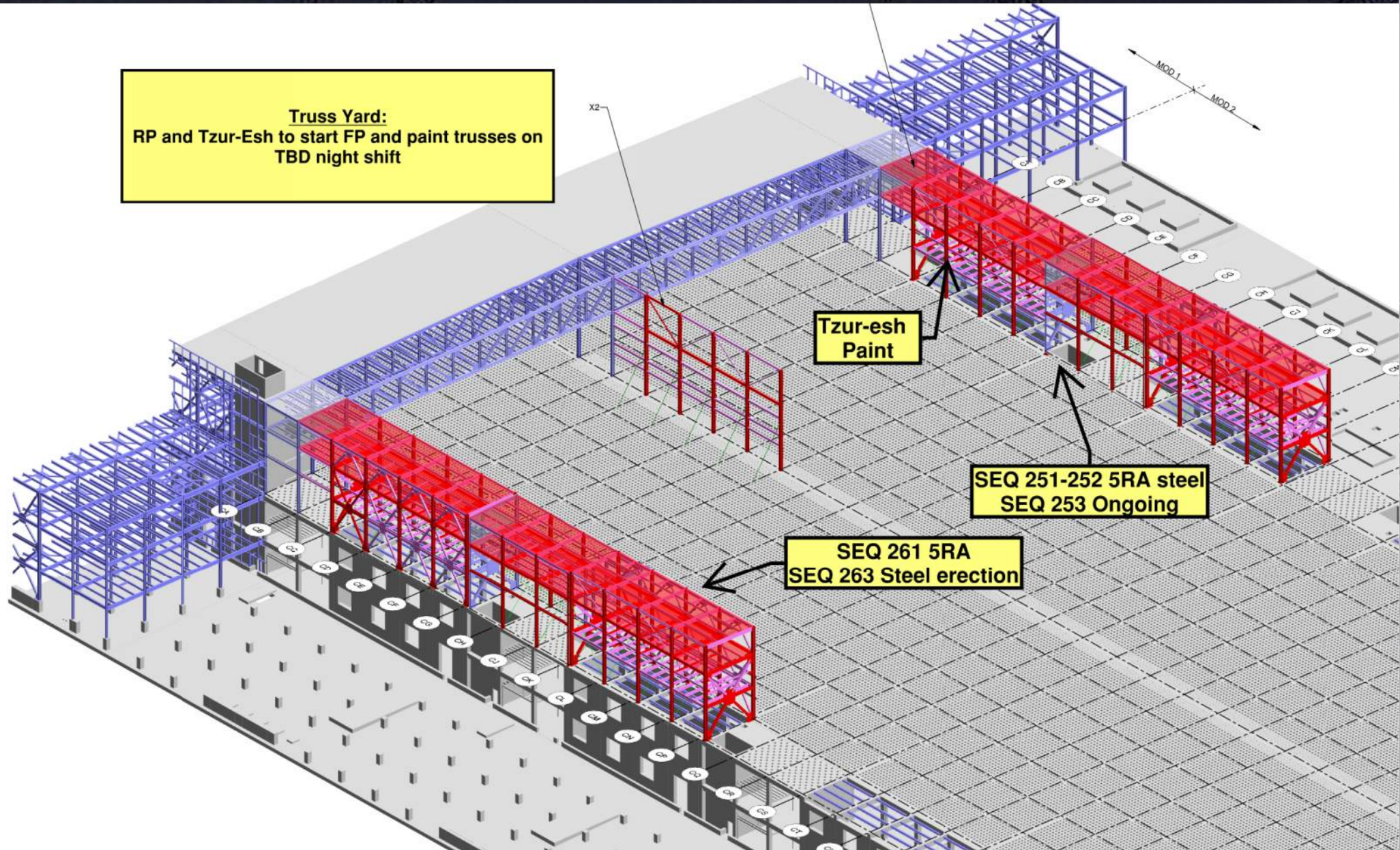
CR level:	
	Afcon - Cable trays, modules and stickers 1W,2E, 2W
	MB- 1E drops, 1W pipes. 2E-2W needs to start
	Elram - 10, 24 columns fix. 9,25 columns on going
	9,25 line columns wrapping
	Meptagon - Zero tolerance pipes 1E,1W, 3E
	D&P - Ceiling rods 1E, 5E blades install
	Tzur-esh - 24-25 lines. 4W. To start 17 line AB-AK paint
	HYG- 1W Litho crane touch ups, 5W Litho crane steel
	PT - Duct 3W
	Talad- Seismic cables











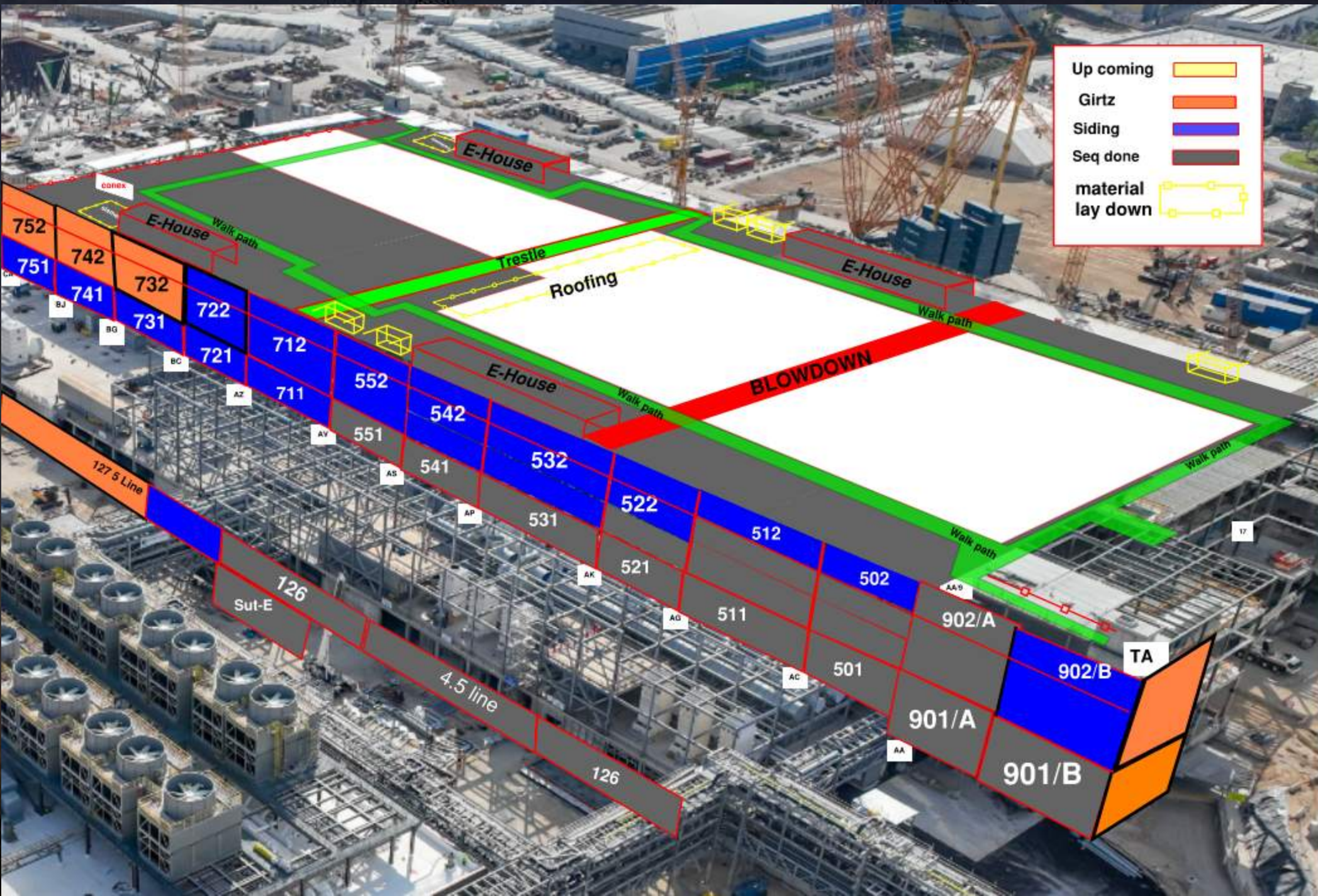
**Truss Yard:**  
RP and Tzur-Esh to start FP and paint trusses on  
TBD night shift

**Tzur-esh  
Paint**

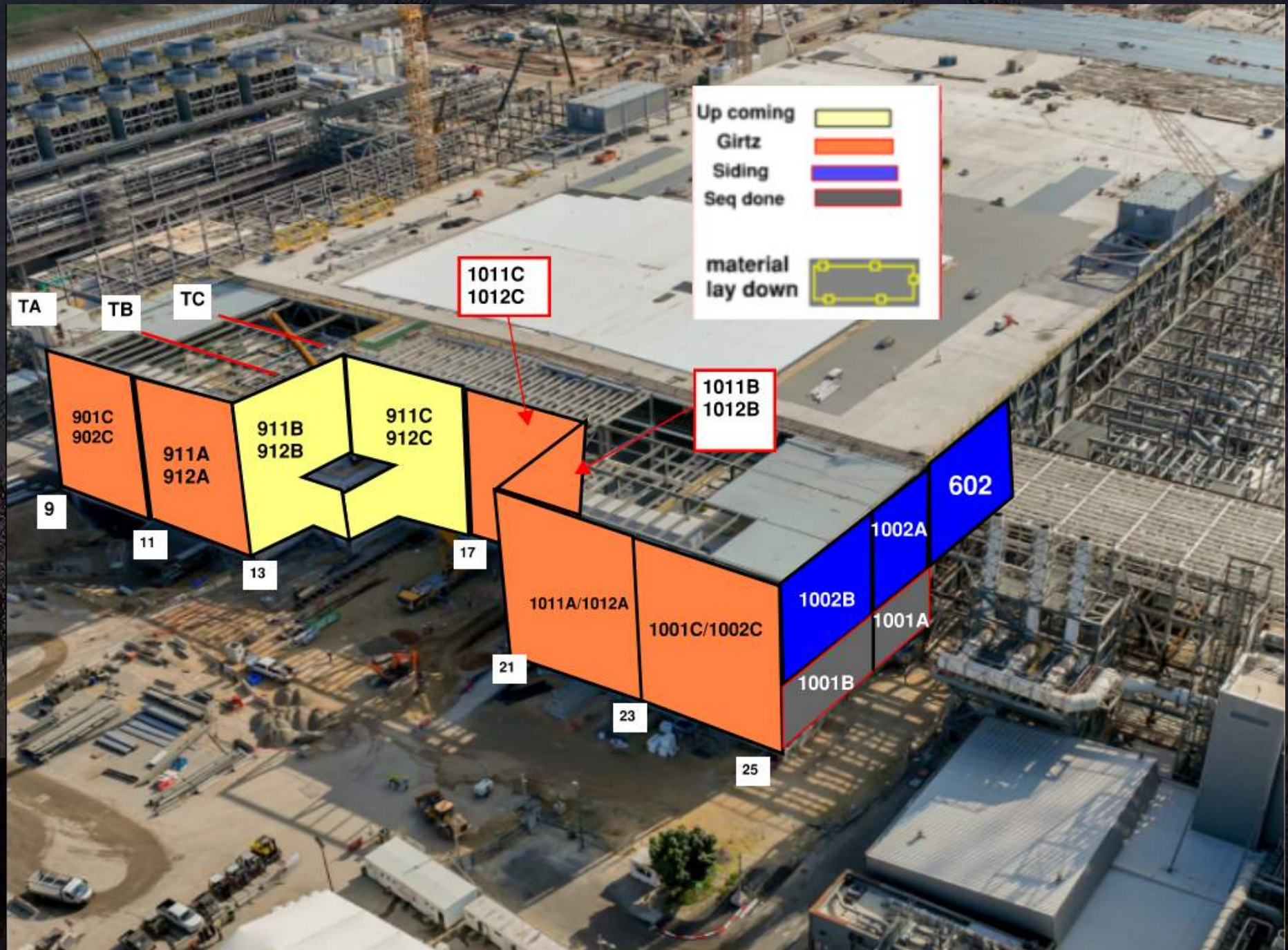
**SEQ 251-252 5RA steel  
SEQ 253 Ongoing**

**SEQ 261 5RA  
SEQ 263 Steel erection**

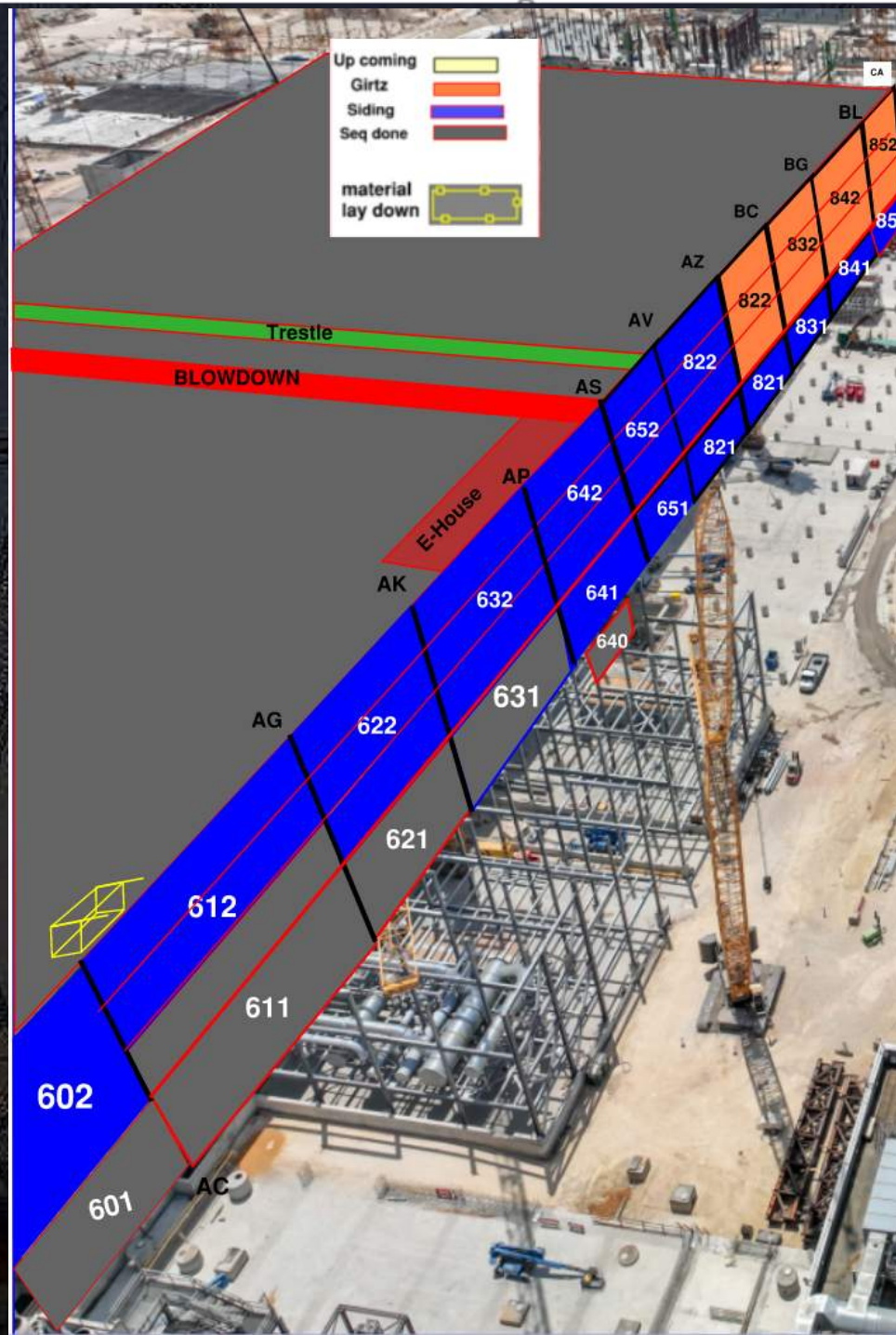




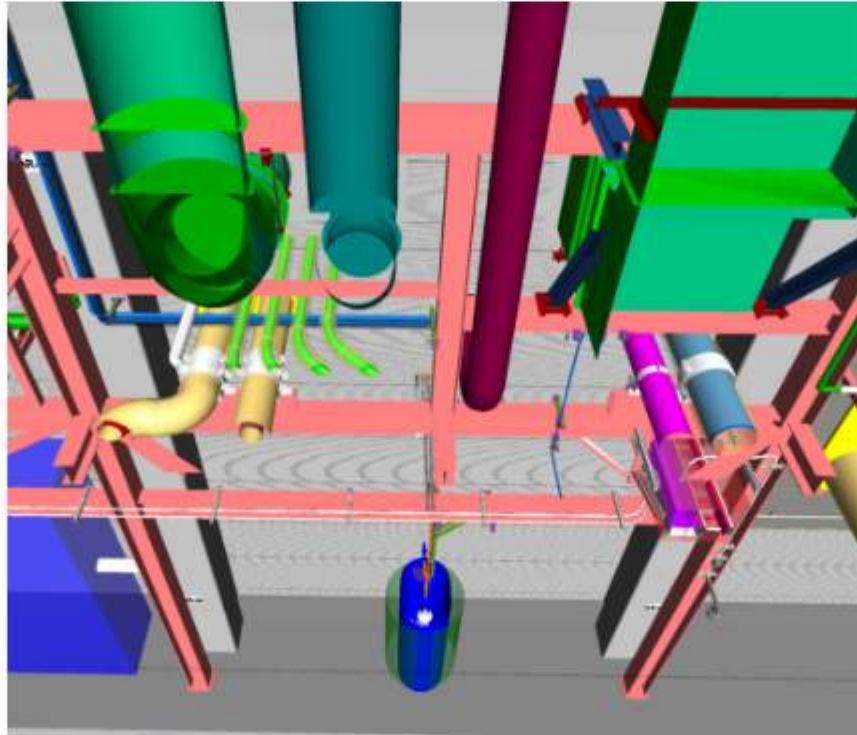
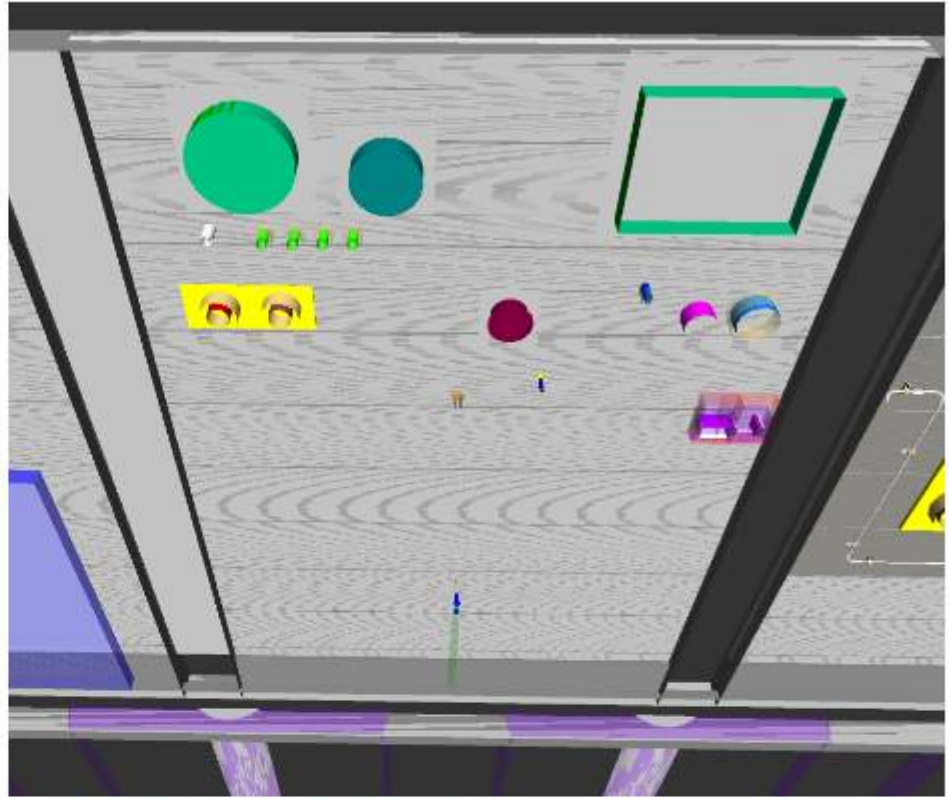




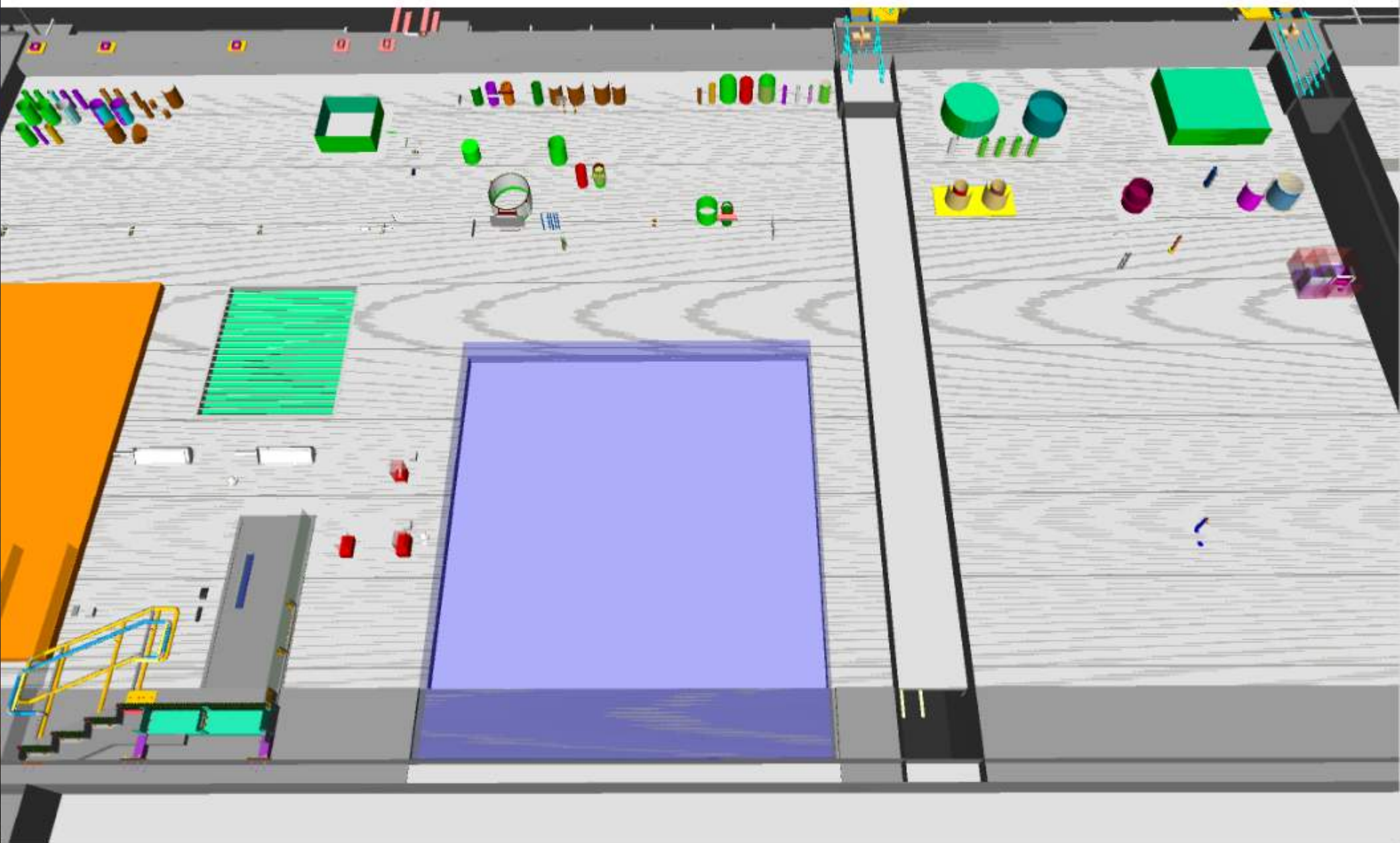






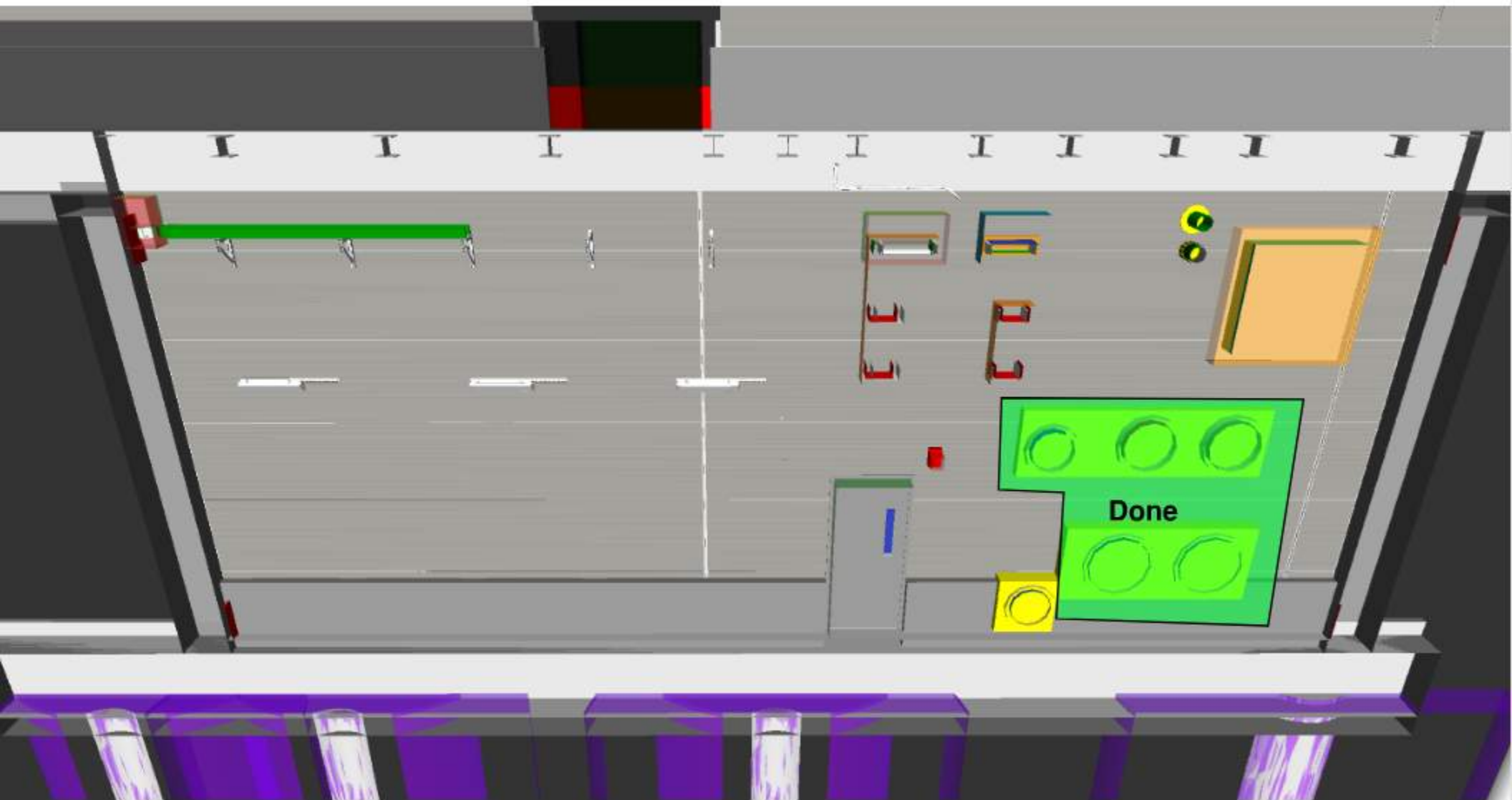


# E-SUT1





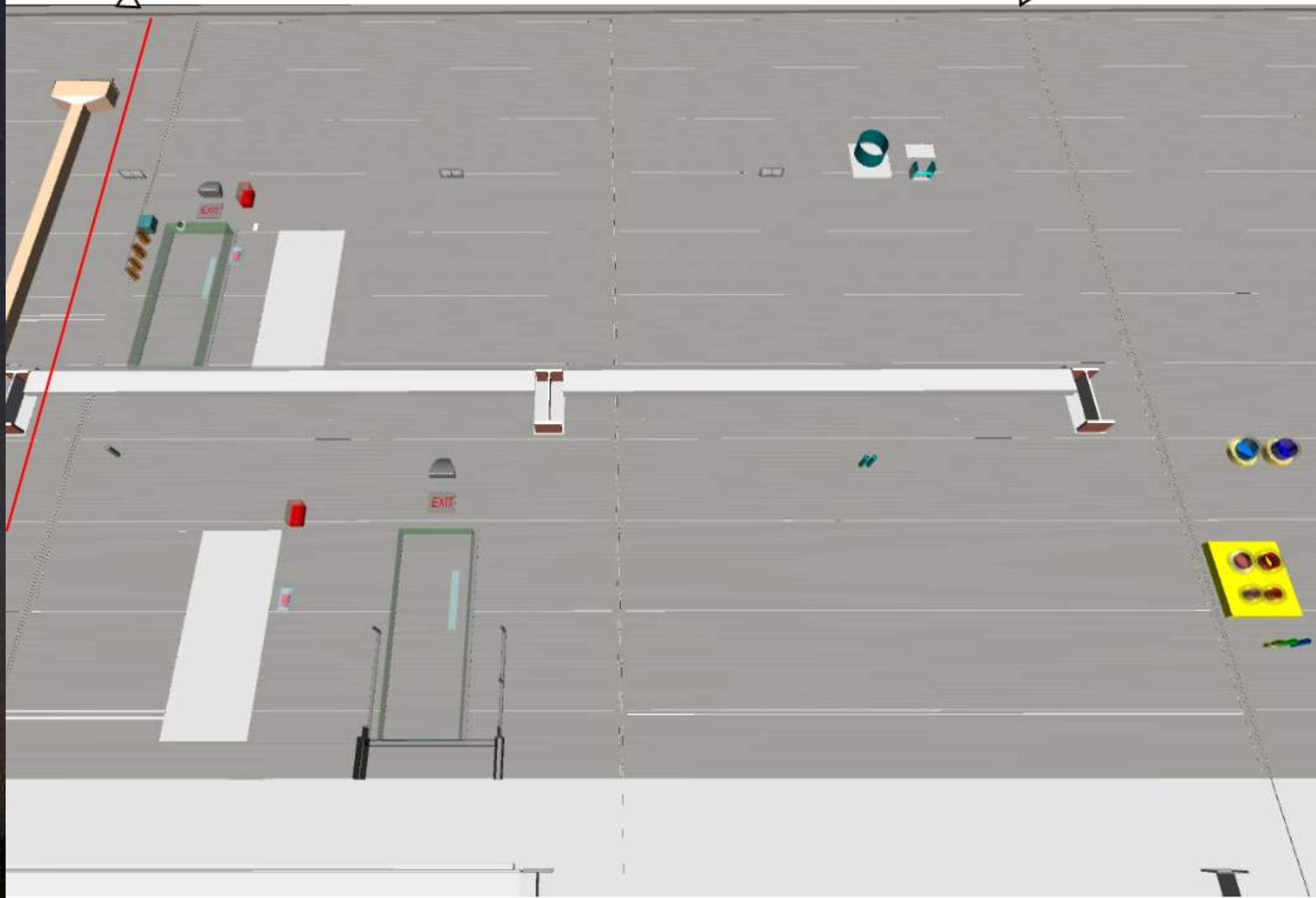
# W-SUT1



AC/9

502

AA/9



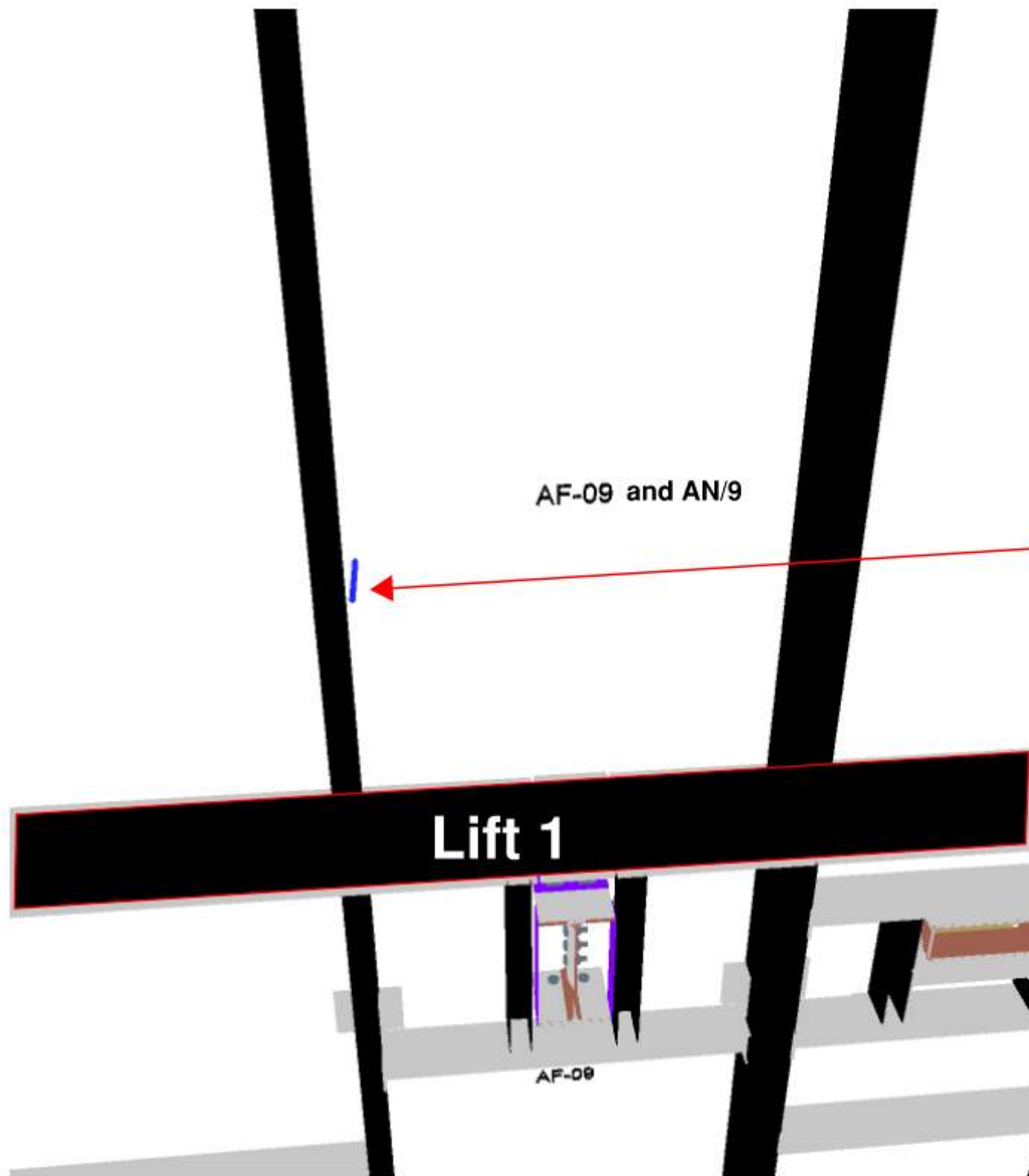


AF-09 and AN/9

**SKE**

**Lift 1**

AF-09



AD/25

# 612 lift 2

AG/25





# Siding Penetration Request Form

## Siding Penetration Request Form



Subcontractor must fill out and submit all required cells in order to get a penetration cut through the siding.

smartsheet

### Siding Penetration Requests

**Location of Penetration \*** ← What Gridline and Elevation is the penetration?  
Gridline and Elevation of where the penetration is being requested.

**Layout Used \*** ← How was the penetration laid out  
What was used to layout the penetration  
Select or enter value

**Size of Penetration \*** ← What is the required penetration size?  
Input the size of the requested penetration in mm.

**Company \*** ← Company Requesting Penetration  
Company that is requesting the penetration

**Contact Person \*** ← Who to call in event of questions  
Who is the contact for this request

**Contact Phone Number \*** ← Phone Number of said person

**Contact Email \*** ← Email of said person

**Layout has been Confirmed \*** ← Confirmation of layout  
Confirmation that the layout has been double checked. If the layout is incorrect, the requesting contractor will be responsible for all required repairs or panel replacements.  
☐

**Date of Request \*** ← Date of Request

**Photo of Layout \*** ← Photo of completed layout in the field  
Upload a photo of the layout that has been completed  
Drag and drop files here or [browse files](#)

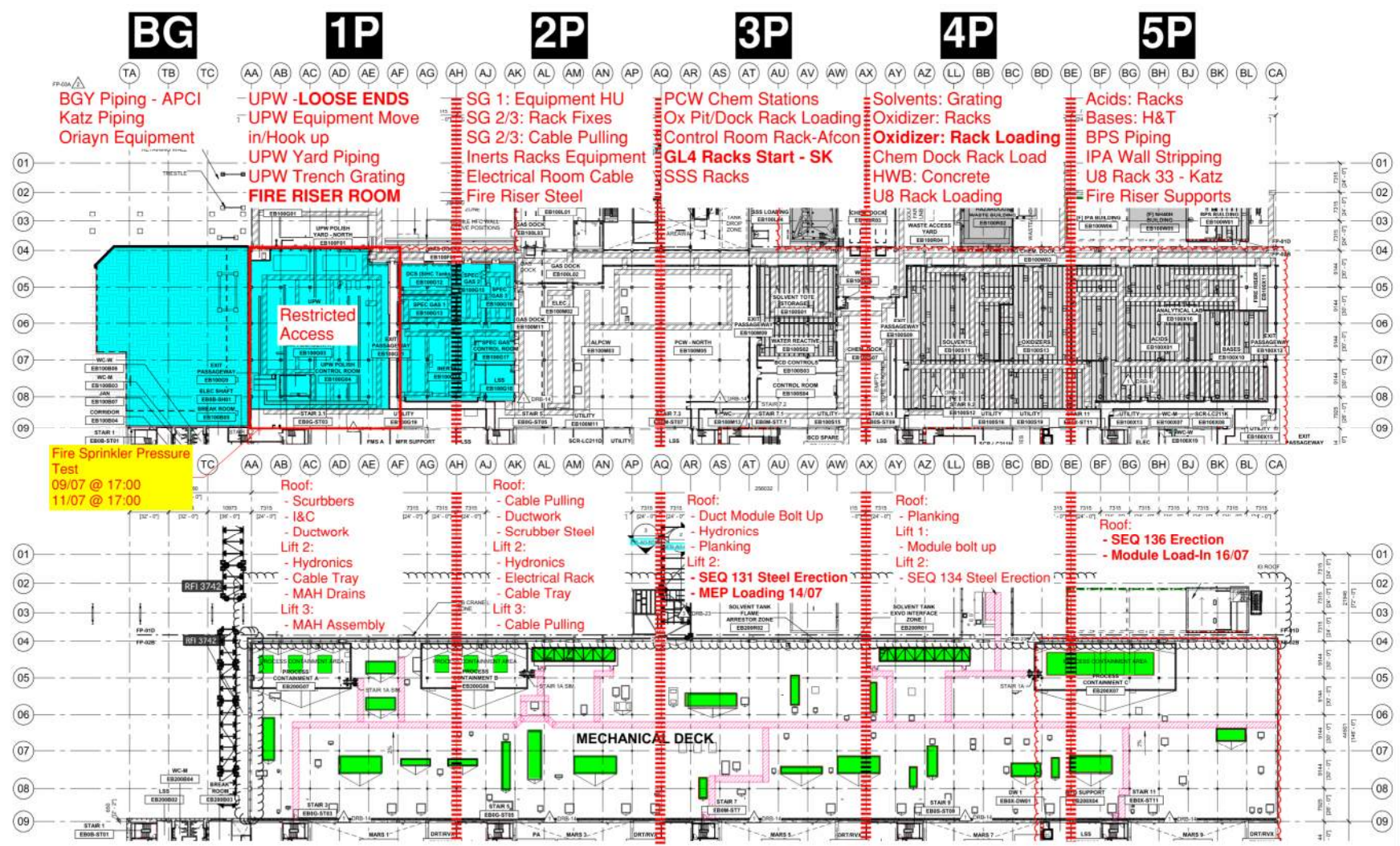
☐ Send me a copy of my responses

**Submit**

# PSSS.1

Utility Level  
1YA

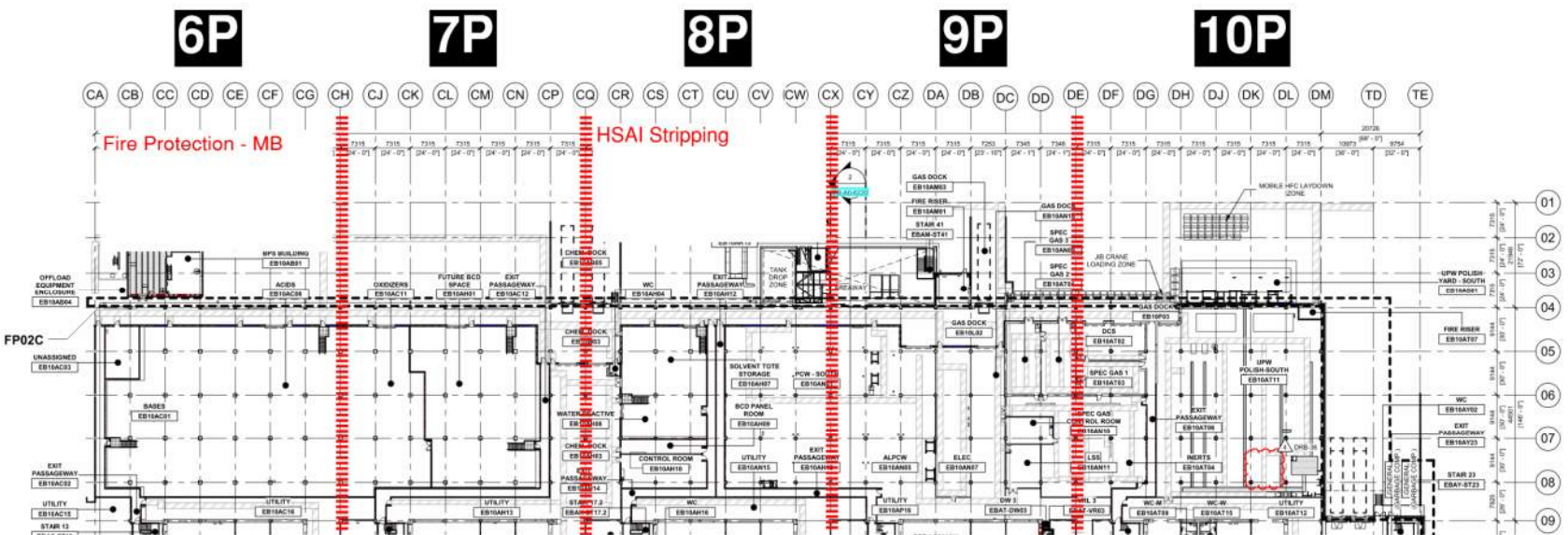
PSSS Roof  
2SA



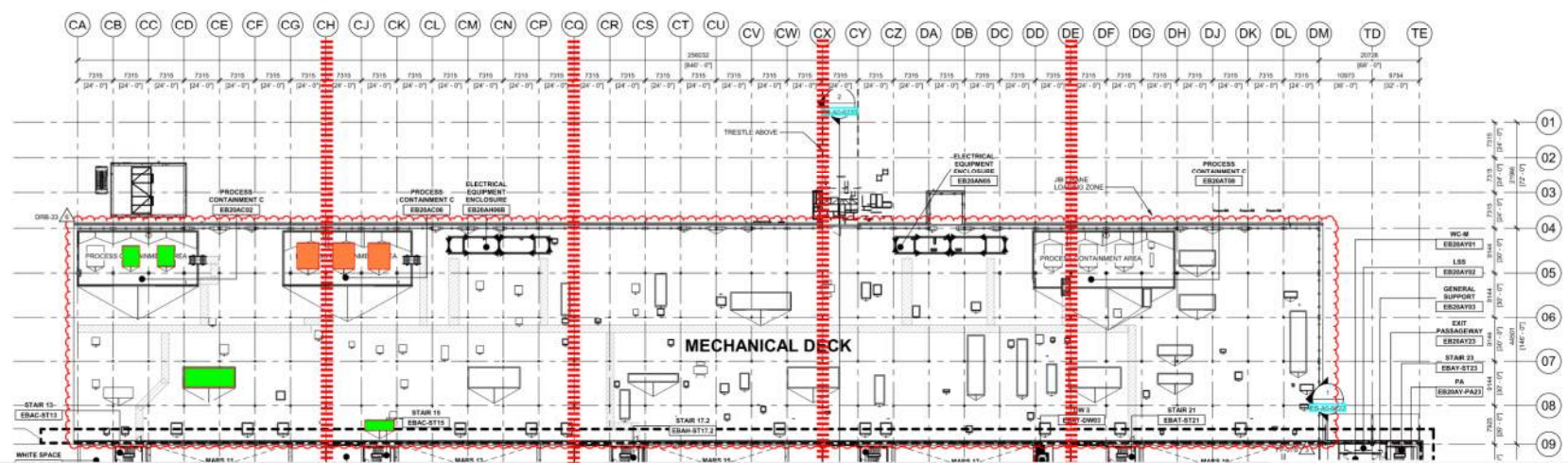


# PSSS.2

Utility Level  
1YA

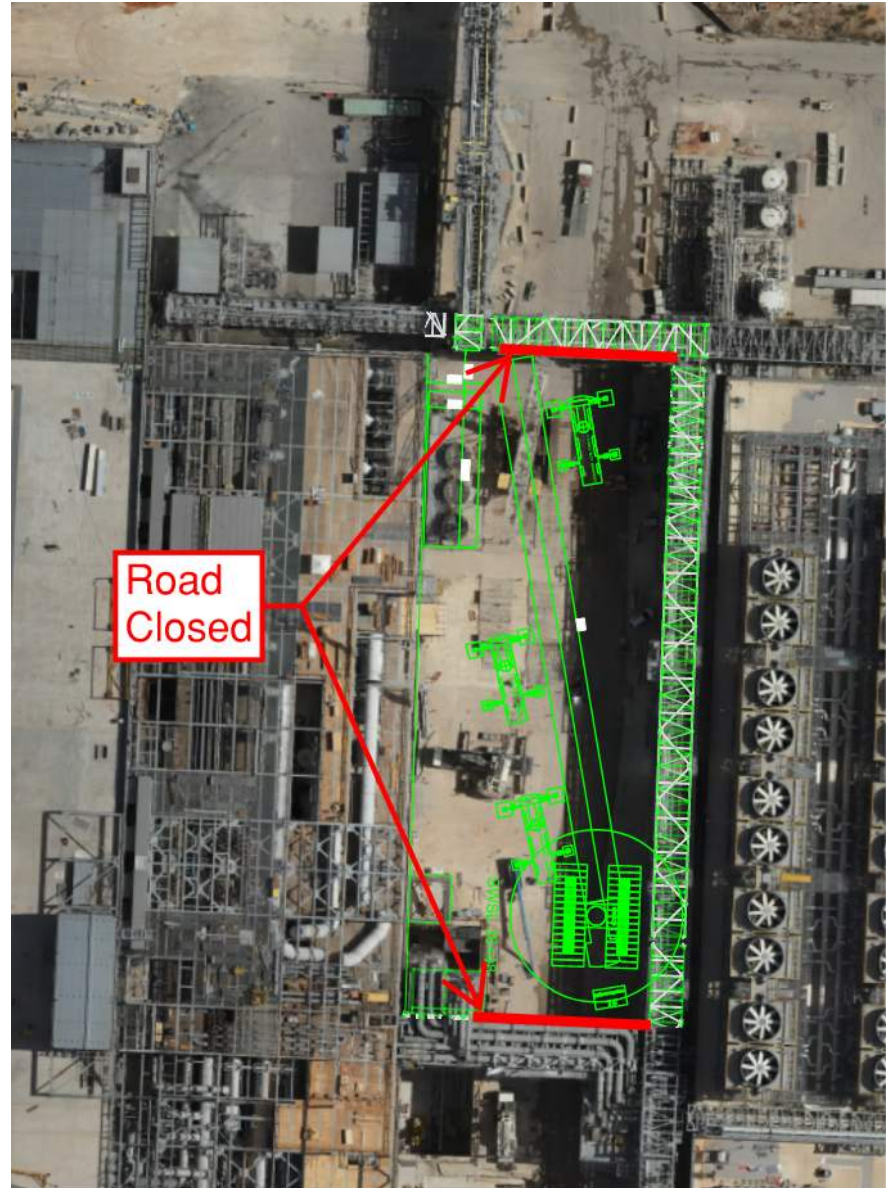


PSSS Roof  
2SA



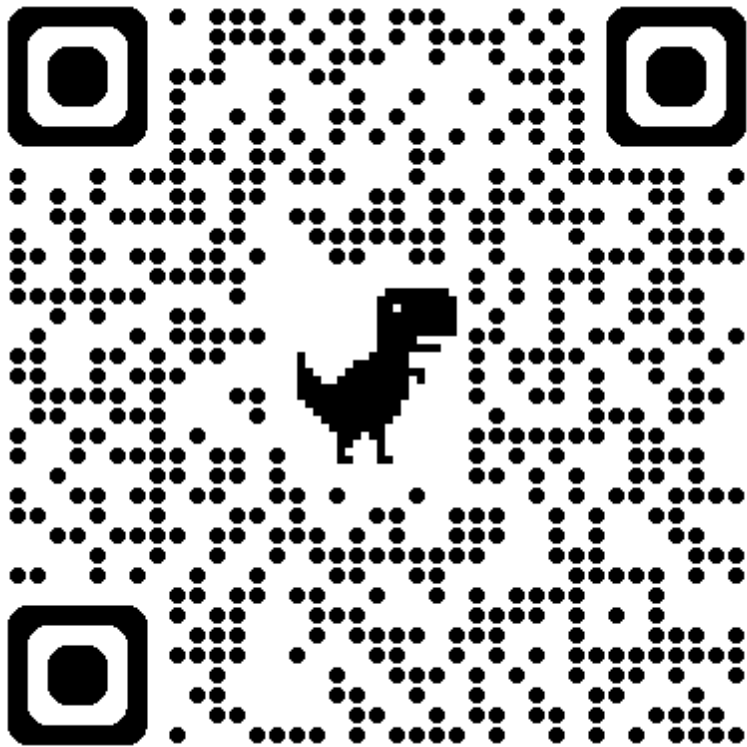
# PSSS DMAG DISMANTLE

- July 21<sup>st</sup>-25<sup>th</sup>
  - UPW MIMO CLOSED
  - GAS MIMO CLOSED
  - GUT ROAD BLOCKED FROM TRESTLE BRIDGE TO TRESTLE BRIDGE





# EJG/WJG Grating/Planking Penetrations



**JG Grating/Planking Penetrations**

**Type of Penetration \***  
What side of the building is the penetration located?

**Location of Penetration \***  
Provide gridlines of where the penetration is needed

**Zone of Penetration \***  
What zone is the penetration

**Lift of Penetration \***  
What lift of Steel is the penetration

**Gridlines of Penetration \***  
Input the gridlines of where the penetration is located

**Size of Penetration \***  
Put size of penetration required in mm

**Contact Company \***

**Contact Number \***  
Contact number in the case of questions

**Contact Email \***  
Email of person to get notifications on penetration

**Layout Confirmation \***  
Confirmation that layout has been confirmed by requesting contractor. If layout is incorrect, the requesting contractor will be responsible for all fixes, build backs, replacement, etc. cost associated with the incorrect layout.  
☐

**Photo of Layout in the field \***  
Upload a photo of the layout once complete  

Drag and drop files here or [browse files](#)

☐ Send me a copy of my responses



# WJG 01J, 02J LIFT 2 & 3







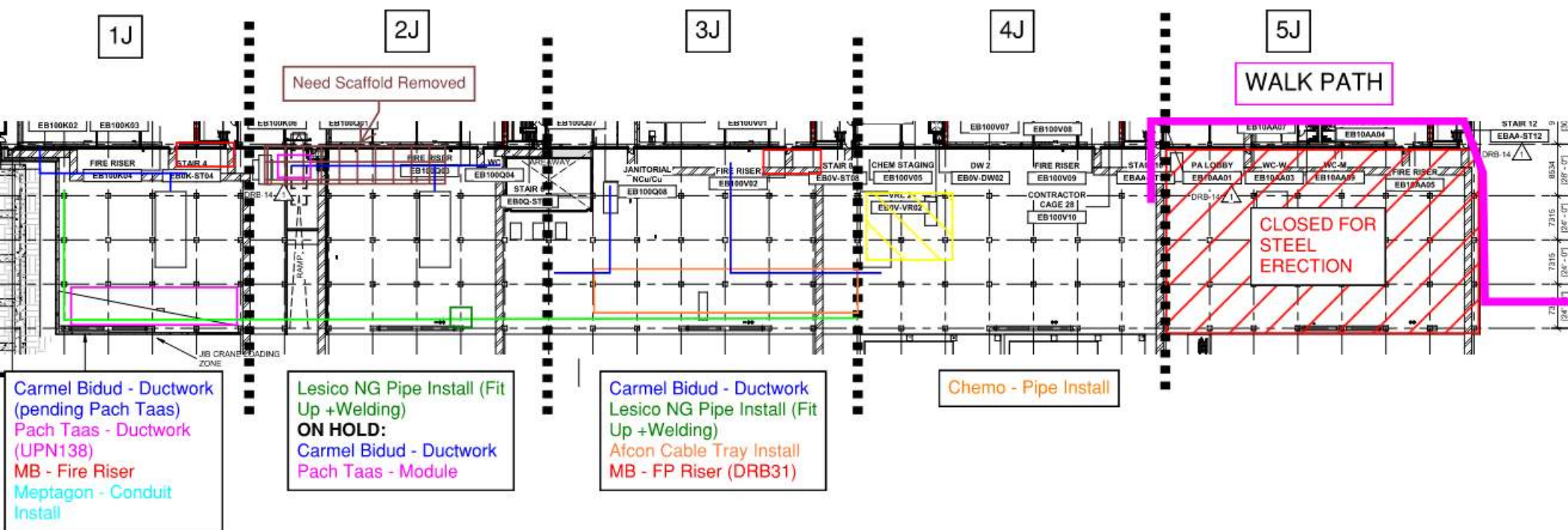
# WJG 03J, 04J, 05J LIFT 2 & 3







# WJG UTILITY LEVEL BUILD OUT



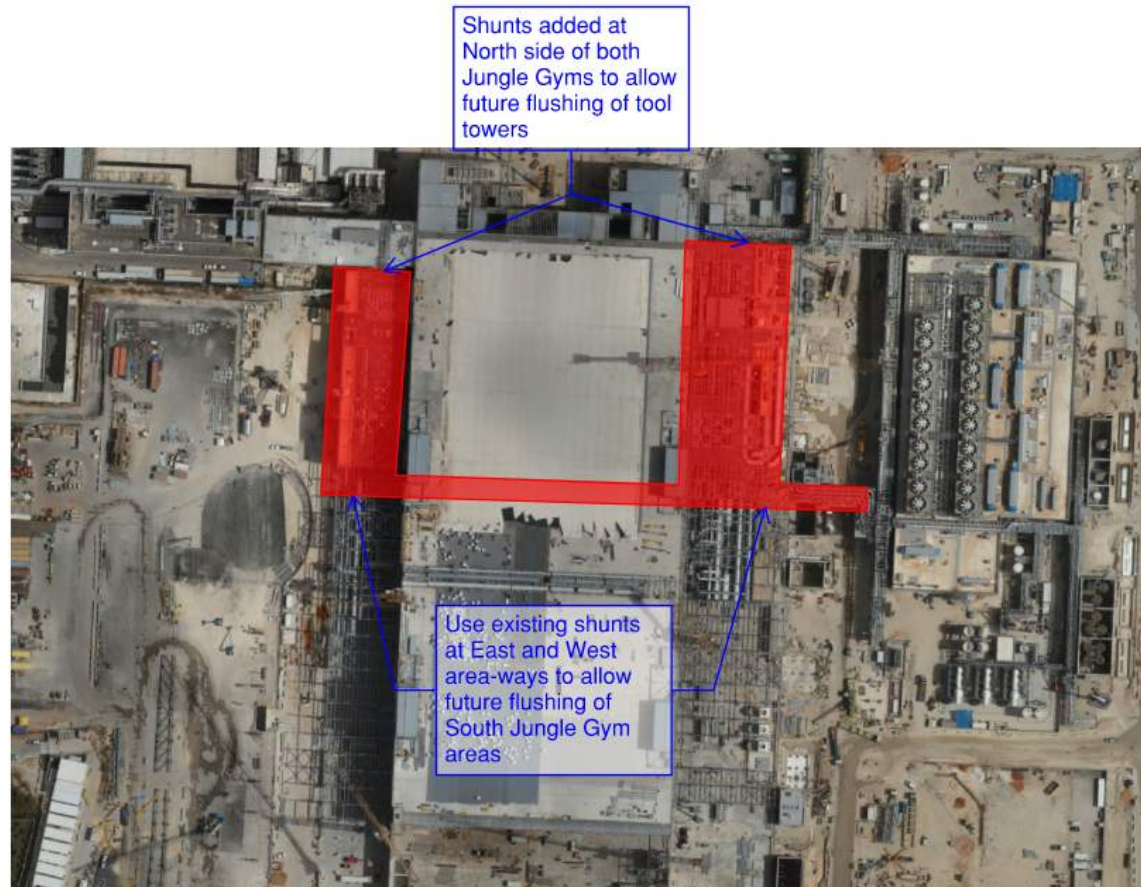


# UPN 116



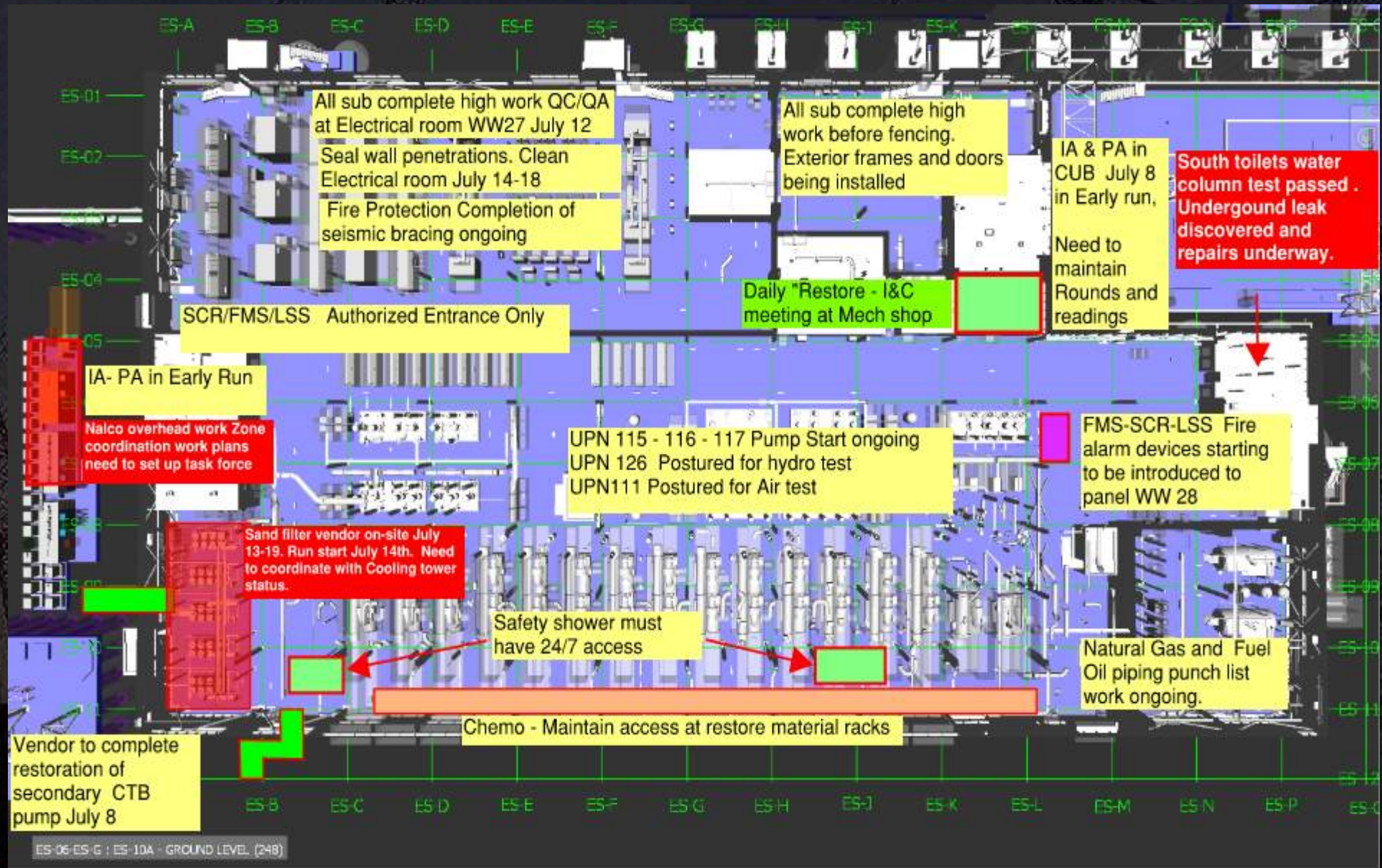
Flushing will enable  
HUPW Heat  
Exchangers (located on  
Utility level sector 2W)

# UPN 117

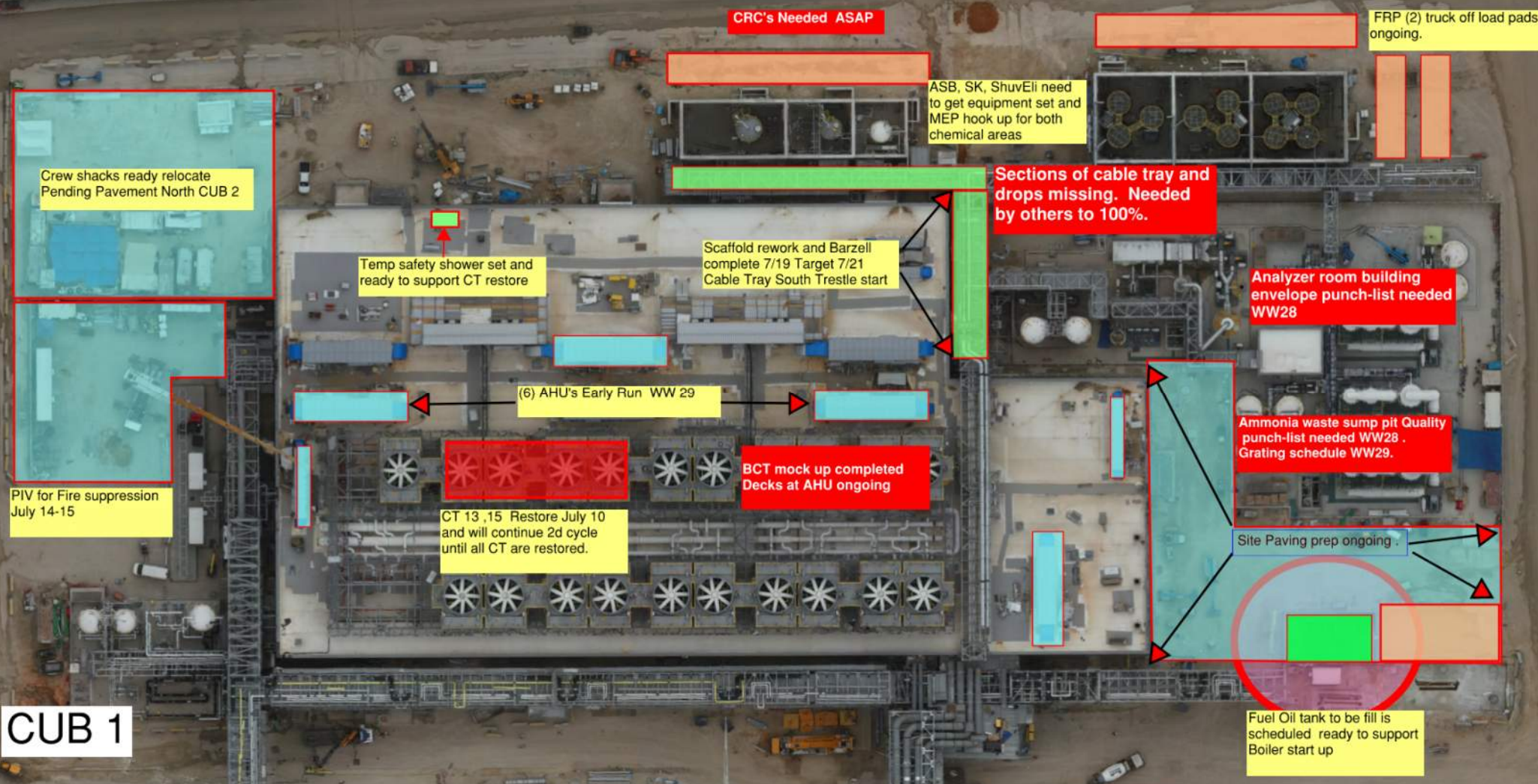


Flushing will enable  
30% Blowdown MAH's  
and Spec Gas room  
Heating coils

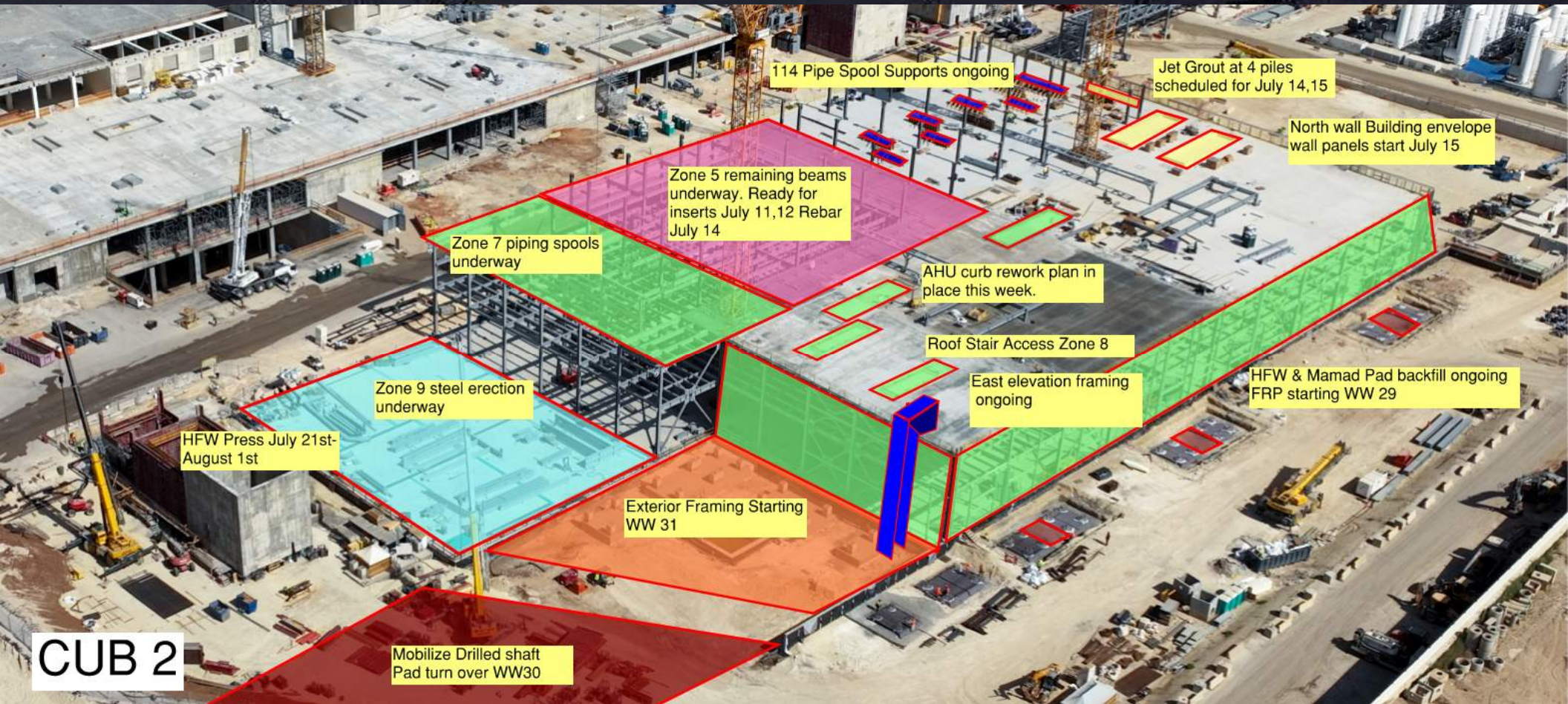




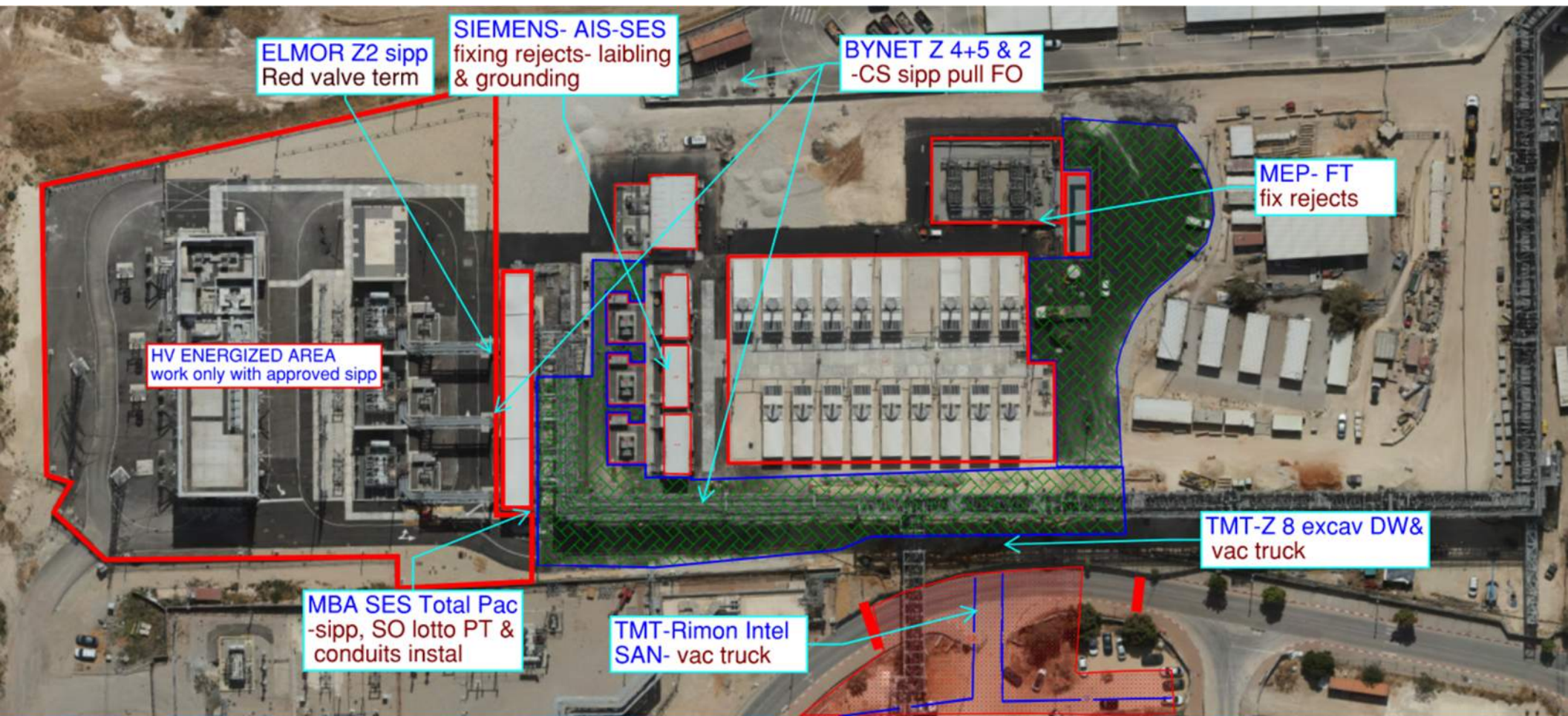








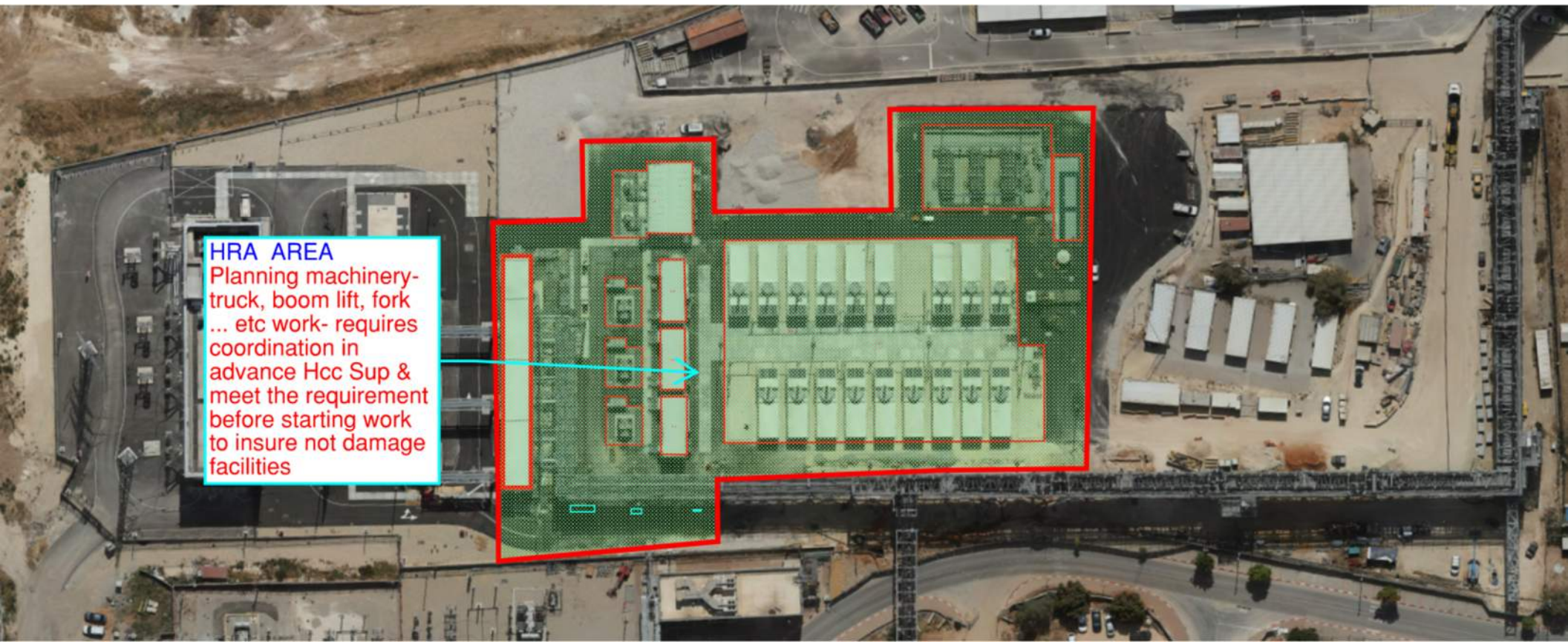






### HRA AREA

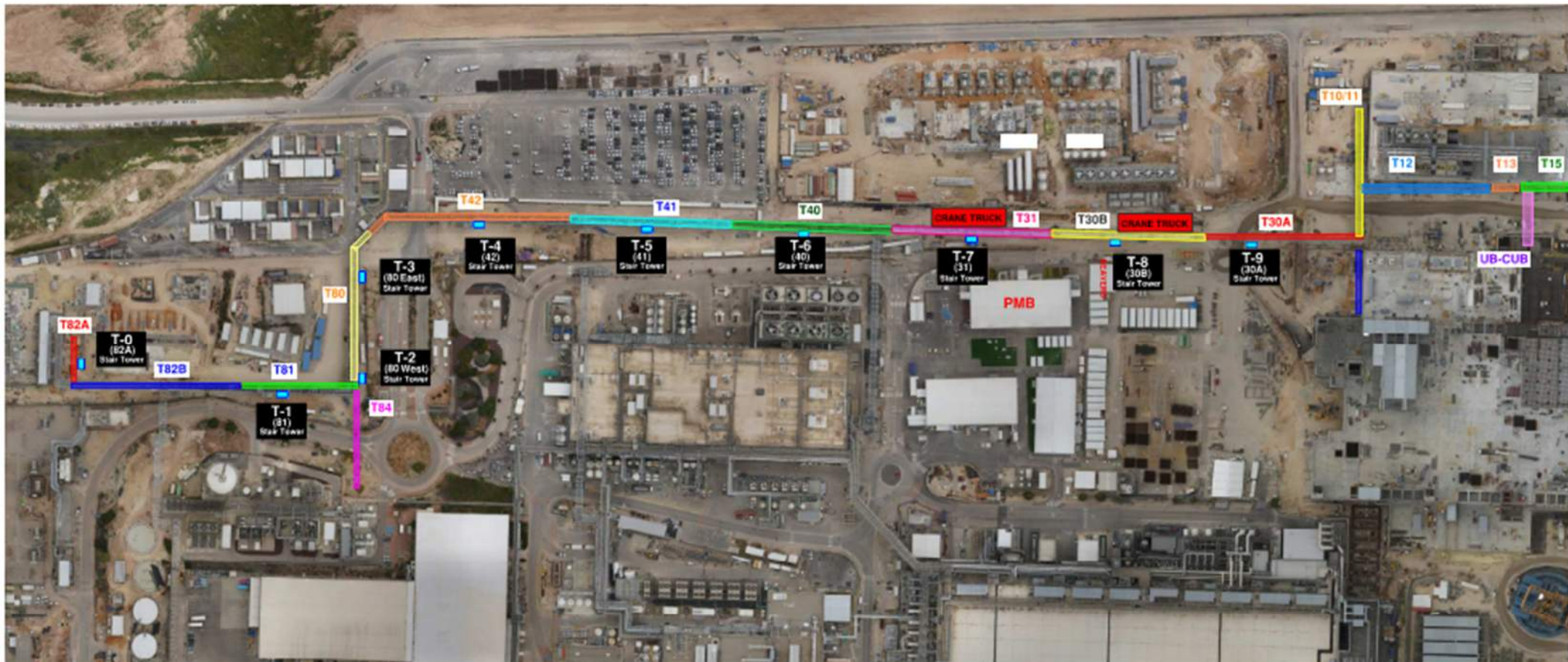
Planning machinery-  
truck, boom lift, fork  
... etc work- requires  
coordination in  
advance Hcc Sup &  
meet the requirement  
before starting work  
to insure not damage  
facilities



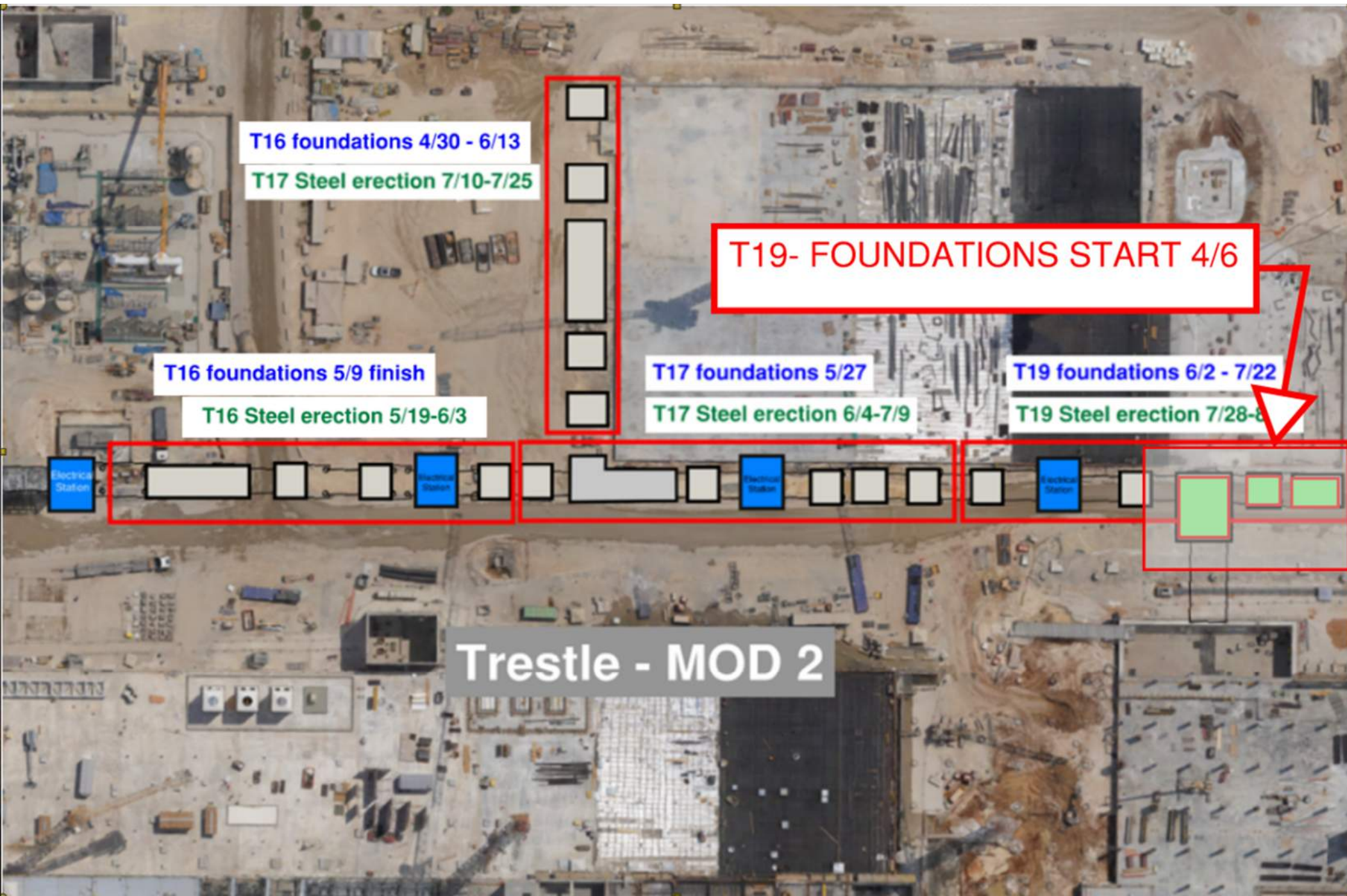




**HOFFMAN CONSTRUCTION COMPANY**







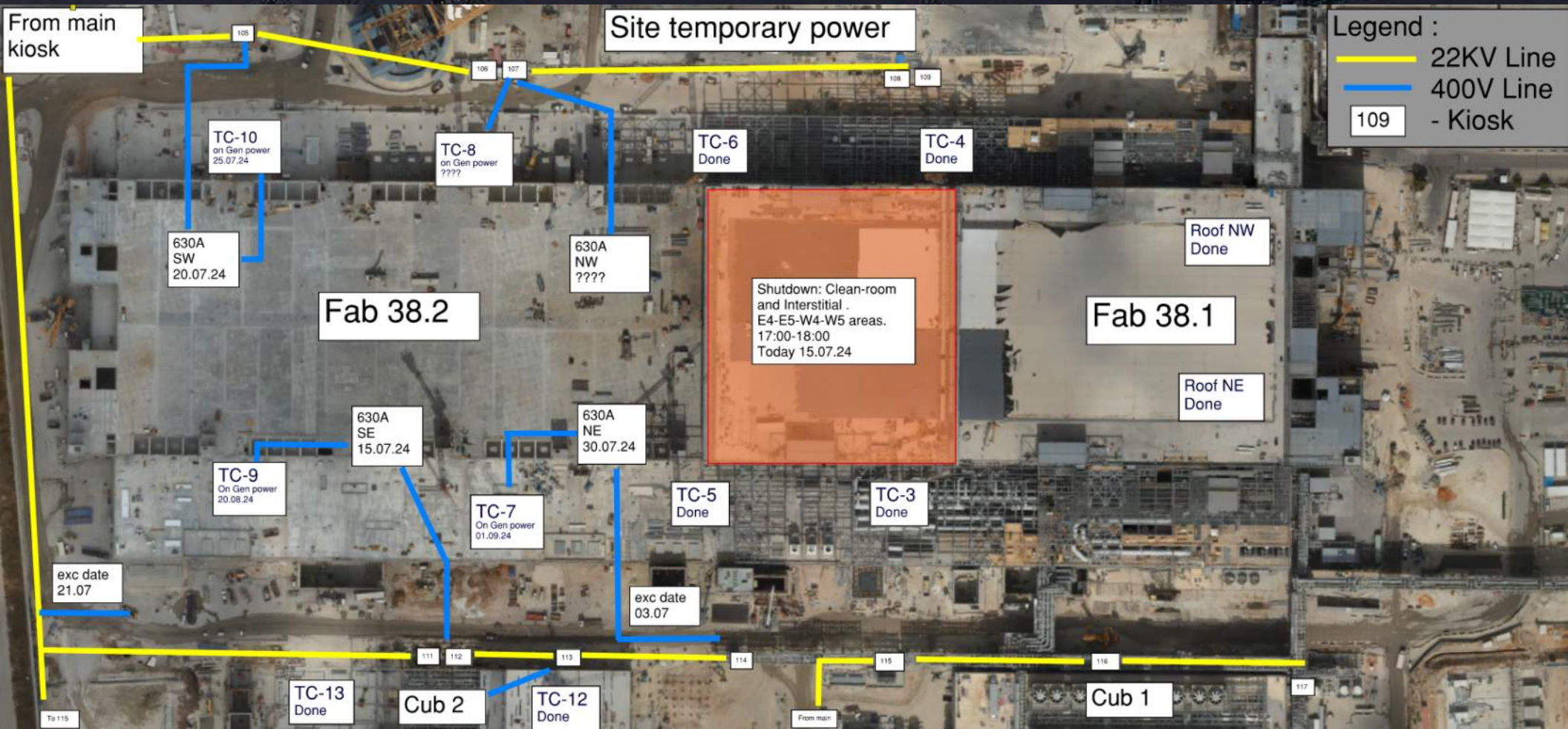








# Daily Coordination Meeting







**HOFFMAN CONSTRUCTION COMPANY**



# Daily Coordination Meeting

Site Logistics

North Gate B



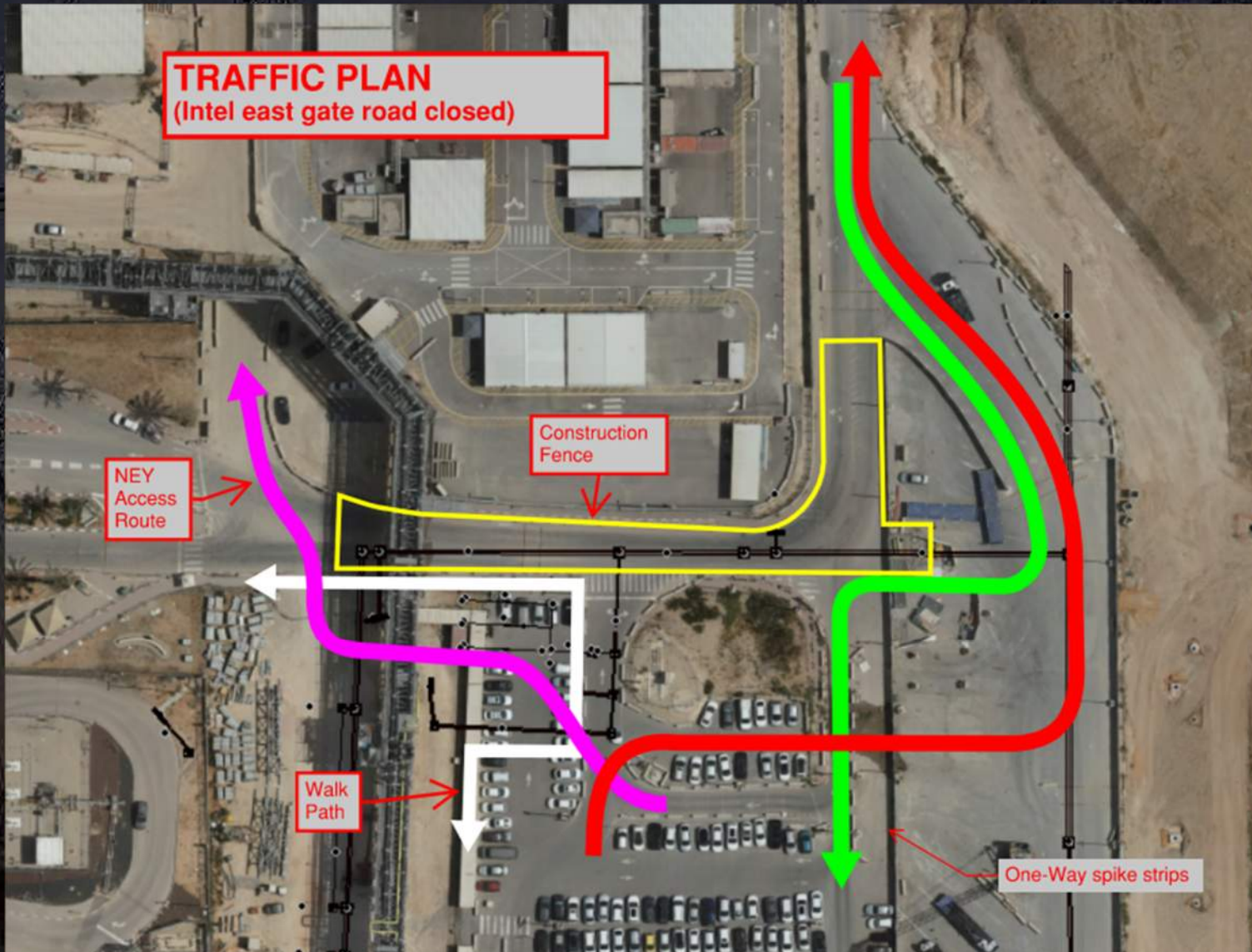




# Daily Coordination Meeting

## Site Logistics

### Traffic Plan







HOFFMAN CONSTRUCTION COMPANY



# Daily Coordination Meeting

Site Logistics

North







**HOFFMAN CONSTRUCTION COMPANY**



# Daily Coordination Meeting

## Site Logistics

**TENT C1 & C2 CLOSED  
FOR CRAFT LUNCH  
(no breaks 10:00 – 18:00)**







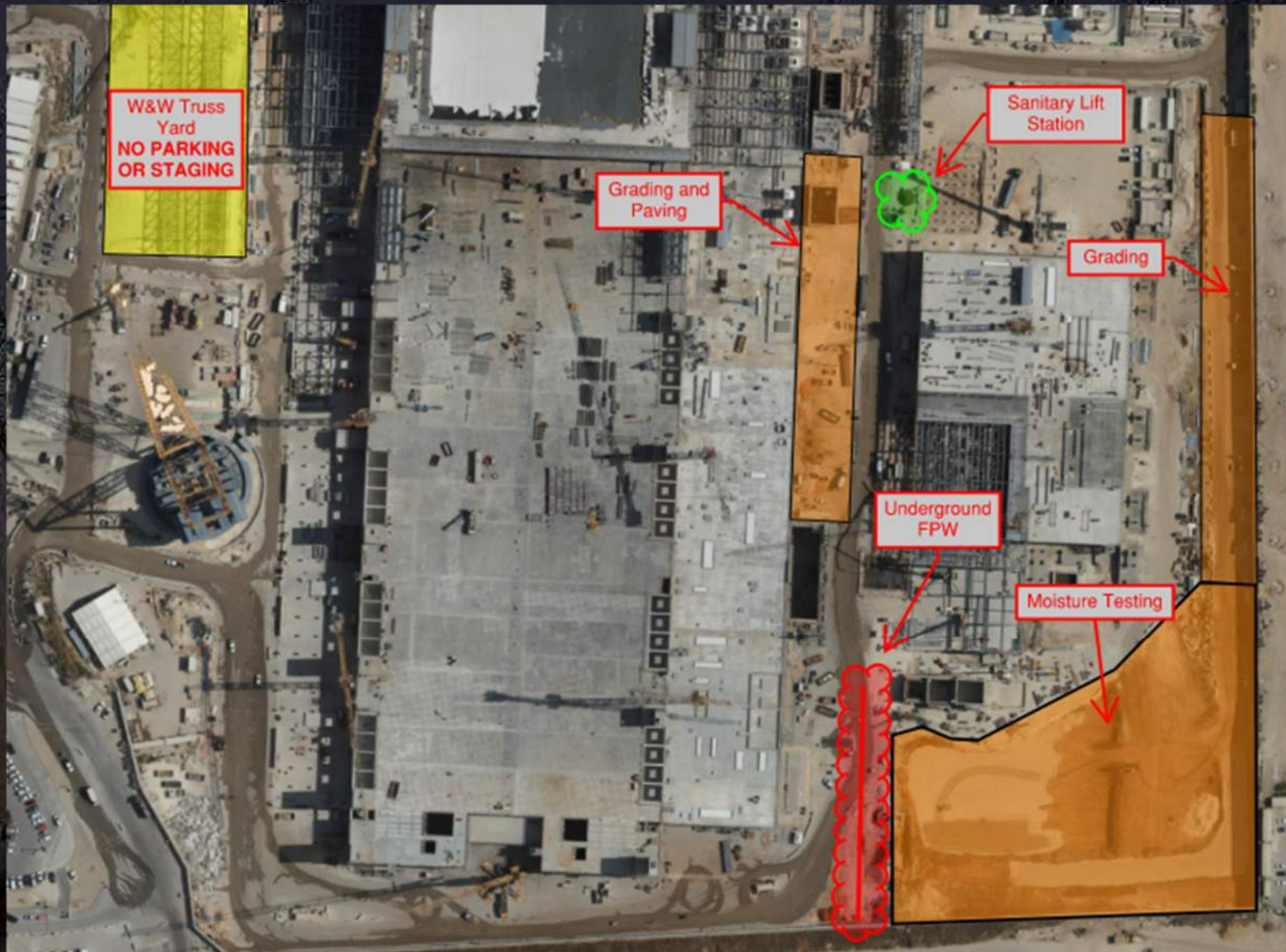
**HOFFMAN CONSTRUCTION COMPANY**



# Daily Coordination Meeting

Site Logistics

South







HOFFMAN CONSTRUCTION COMPANY



# Daily Coordination Meeting

## WATER BOTTLE FILLING & PERSONNEL COOLING STATIONS

BF (1) AT GIS





# Job Services

Work Week 29

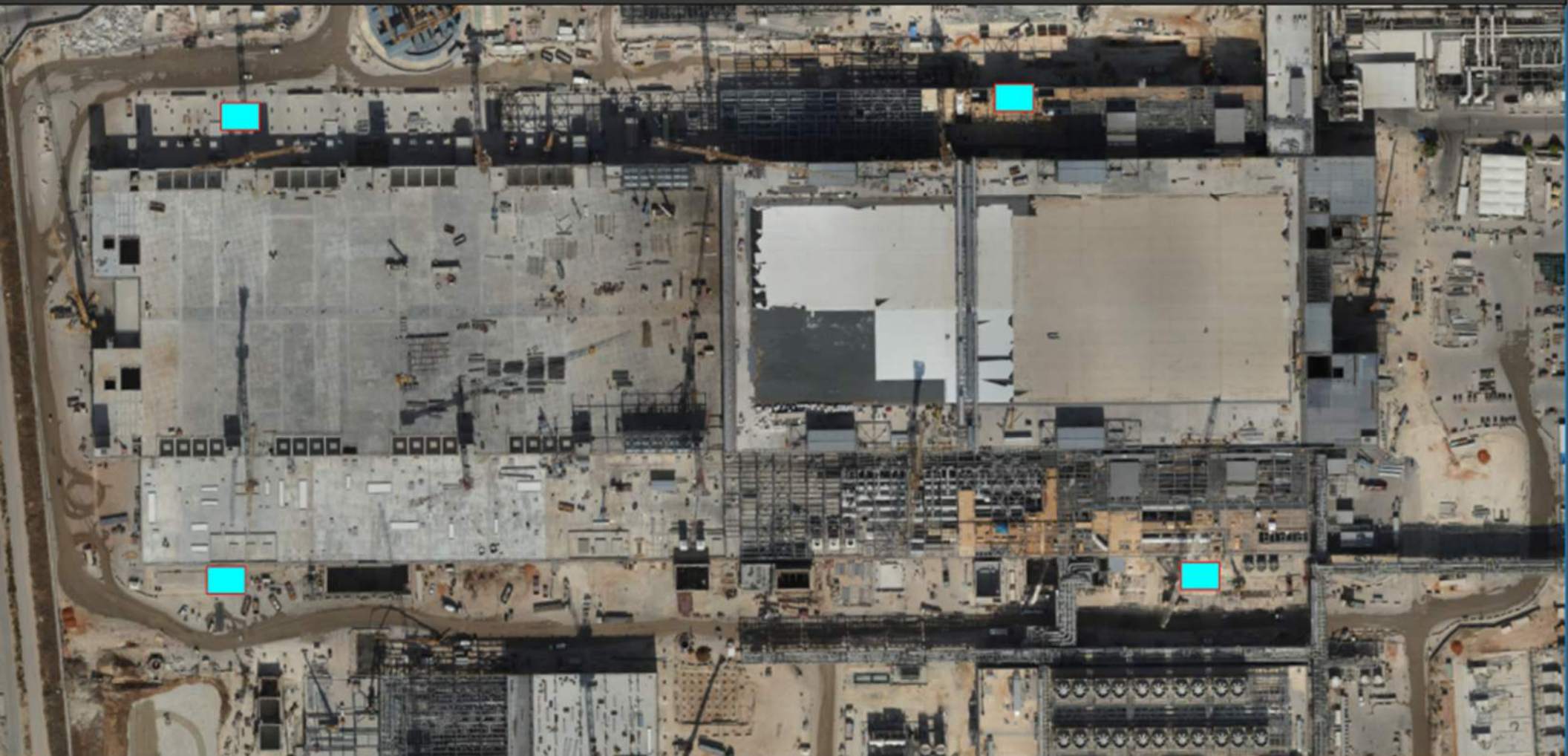
- ▶ Bottle water stations
- ▶ Cooling stations use







# Bottle Water Stations













# Assume Systems are Live Until Proven Otherwise

- All team members in the field need to be aware of the potential hazard of live systems in their area.
- Part of the area assessment must identify possible live systems AND what the employees must do to protect themselves from the energy within.
- Bullet-proofing is one way to protect workers from hazardous energies (water, air, electricity, etc.) within systems, and is required when our work MIGHT damage those systems.



# Bullet-Proofing Examples





# Bullet-Proofing Examples





# Bullet-Proofing Examples





# Heat Index- July 16<sup>th</sup>

	temperature (°F)															
	80	82	84	86	88	90	92	94	96	98	100	102	104	106	108	110
40	80	81	83	85	88	91	94	97	101	105	109	114	119	124	130	136
45	80	82	84	87	89	93	96	100	104	109	114	119	124	130	137	
50	81	83	85	88	91	95	99	103	108	113	118	124	131	137		
55	81	84	86	89	93	97	101	106	112	117	124	130	137			
60	82	84	88	91	95	100	105	110	116	123	129	137				
65	82	85	89	93	98	103	108	114	121	128	136					
70	83	86	90	95	100	105	112	119	126	134						
75	84	88	92	97	103	109	116	124	132							
80	84	89	94	100	106	113	121	129								
85	85	90	96	102	110	117	126	135								
90	86	91	98	105	113	122	131									
95	86	93	100	108	117	127										
100	87	95	103	112	121	132										

Caution
Extreme Caution
Danger
Extreme Danger

## Extreme Caution

- Ensuring water and shaded areas available
- Acclimating workers
- Emergency planning and response
- Training workers and supervisors on the signs of heat stress and preventative measures
- Modified work schedules and/or rotating out workers
- Monitoring of workers for signs of heat stress