

# Daily Coordination Meeting

## General Topics:

- Vehicle passes- pick up your passes from Safety trailer #12 by end of day Thursday







N-RCTO CLSM backfill  
4:00am

PSSS Samp  
3:00 am

4 line curb SUT 1  
2:00 am

SCCA CUB 2 north yard  
12:00 am

SCCA Slab CUB 2 north  
yard 12:00am

4 line curb SUT 1, 2:00am

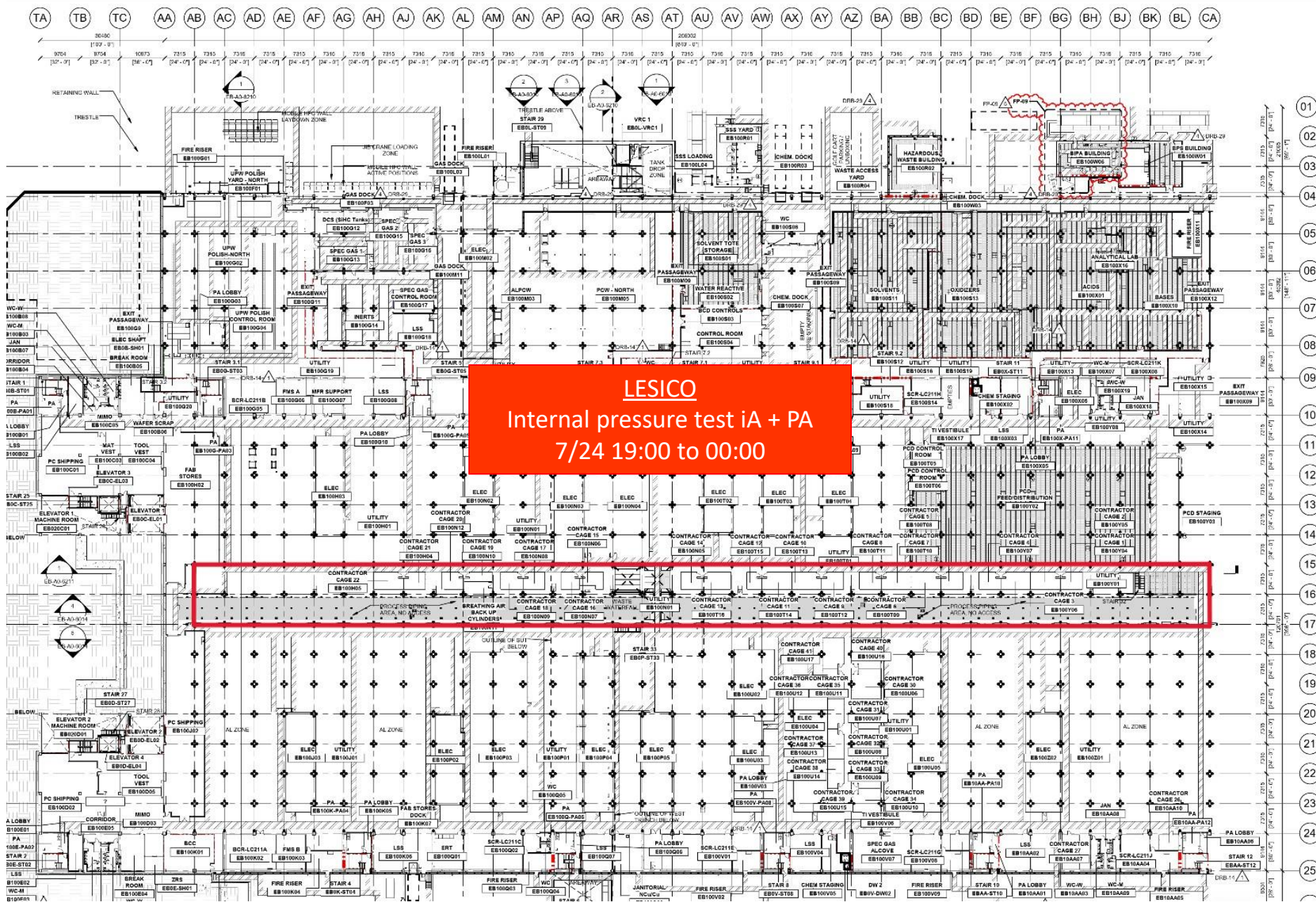
PSSS Samp 3:00am

N-RCTO CLSM backfill  
4:00am





## UTILITY LEVEL

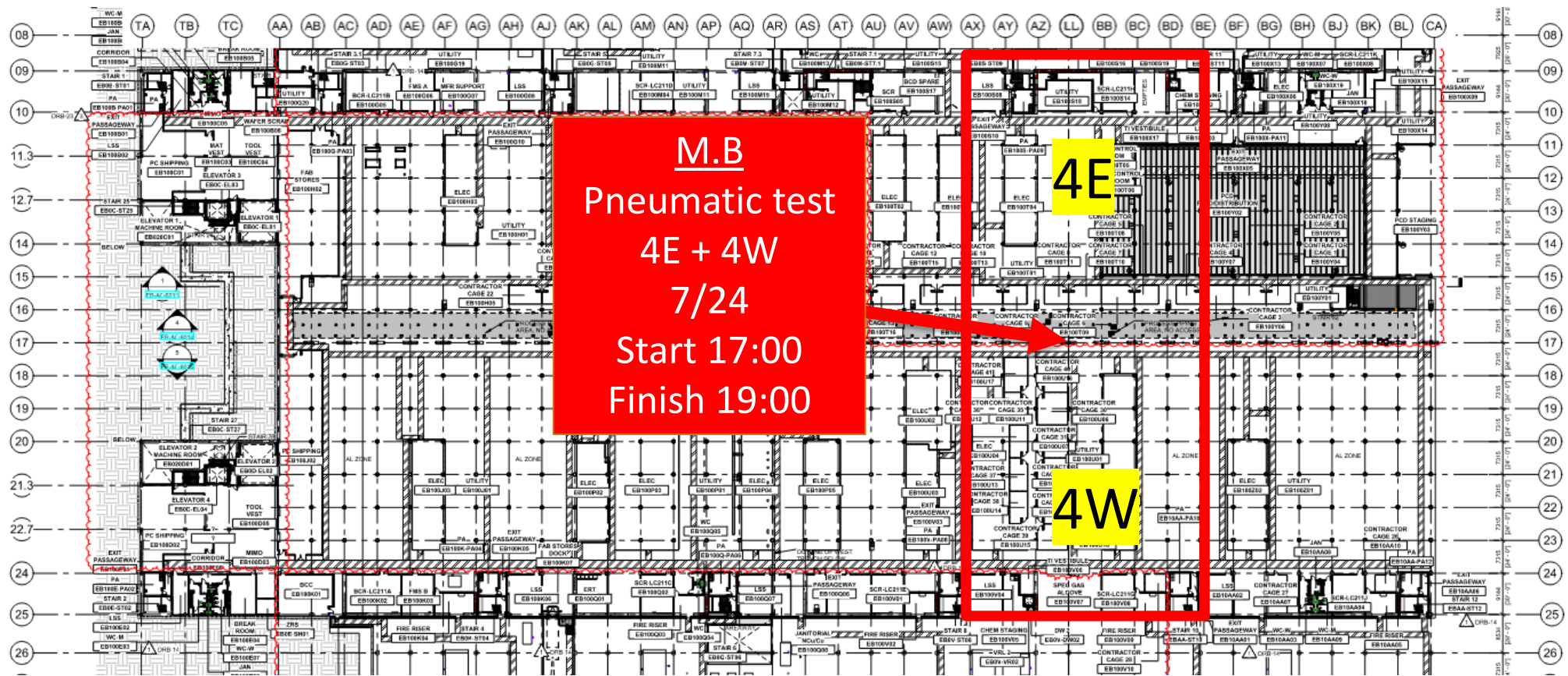






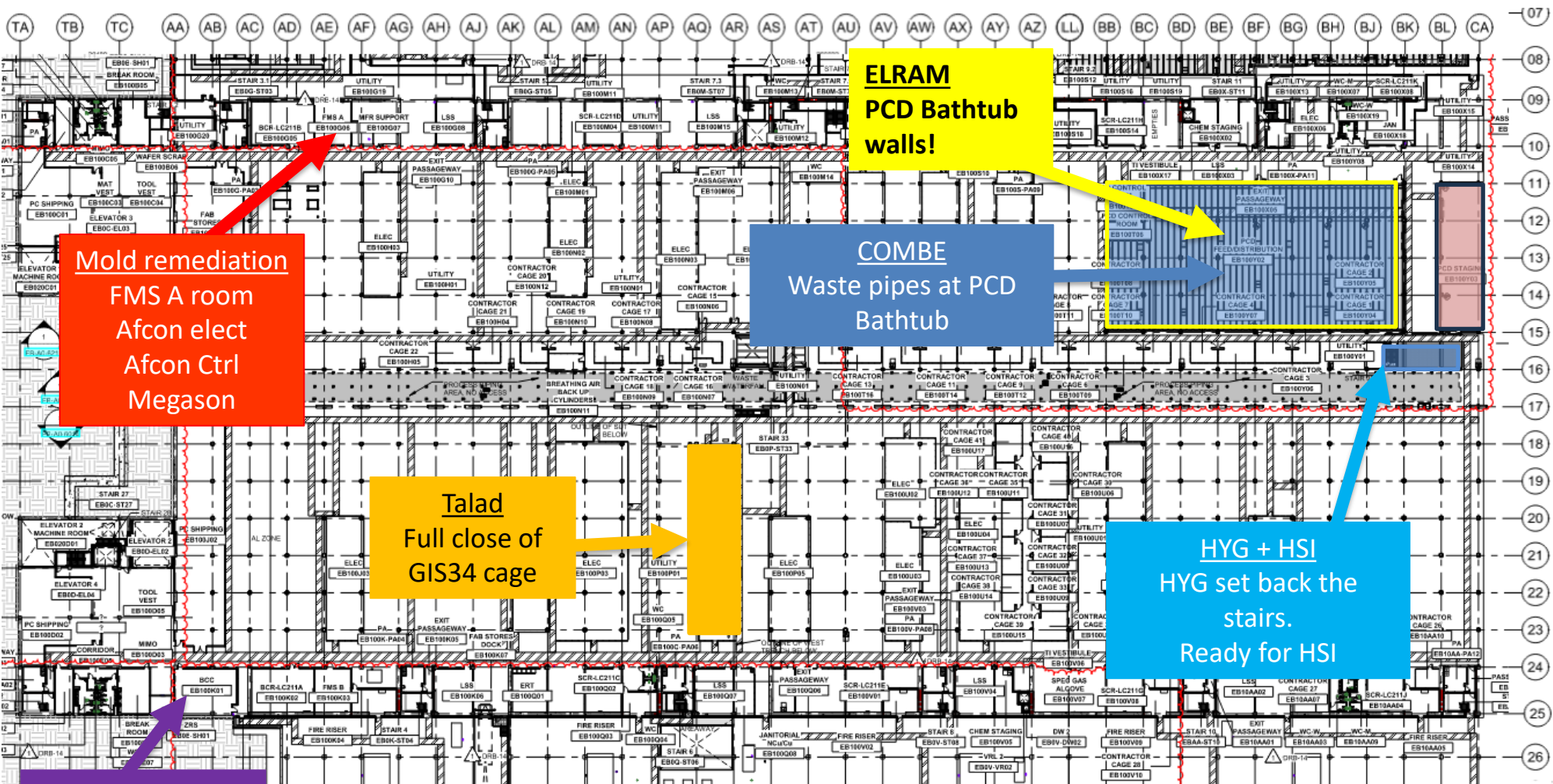


# UTILITY LEVEL MOD1



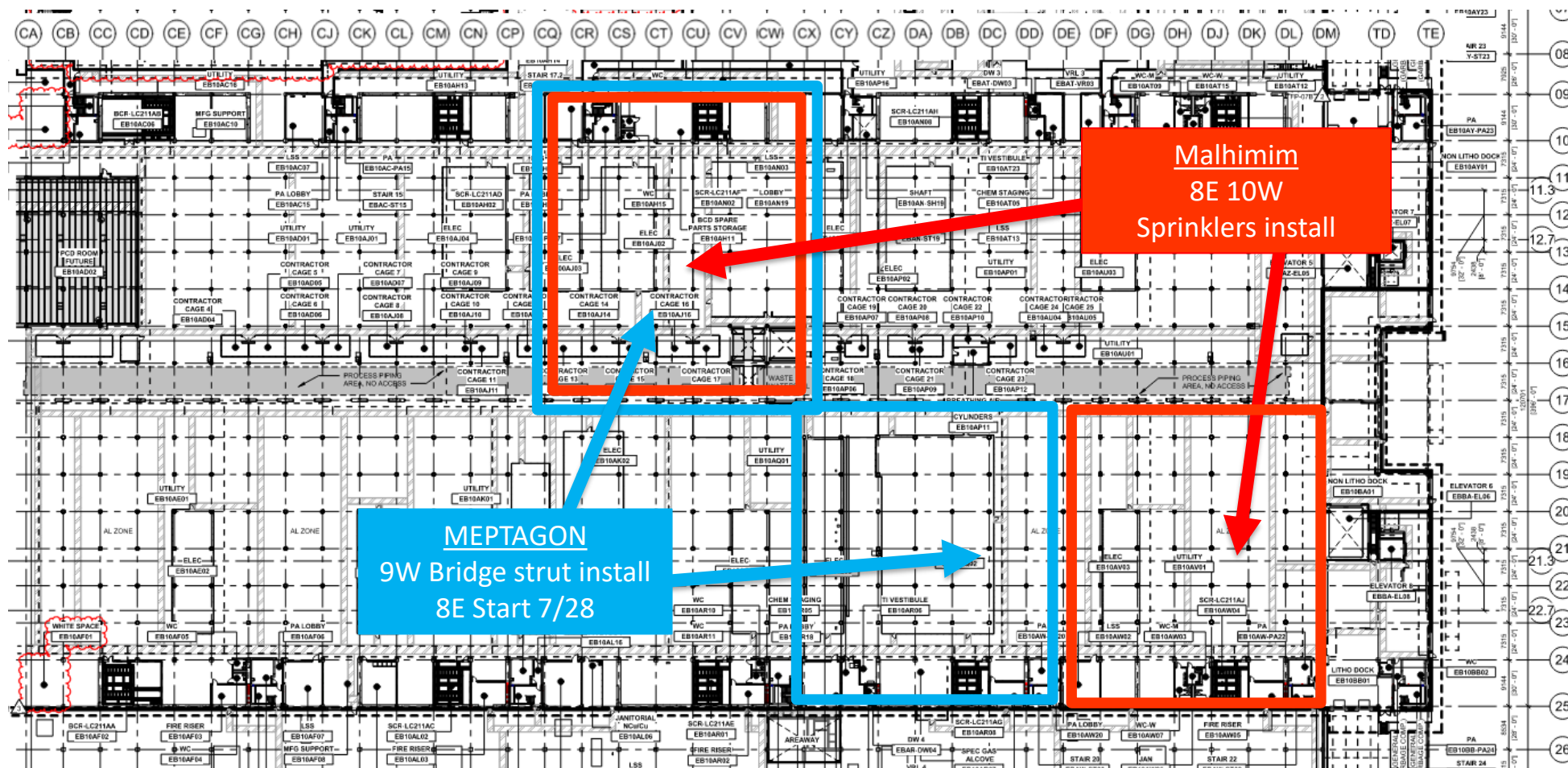


## UTILITY LEVEL MOD1





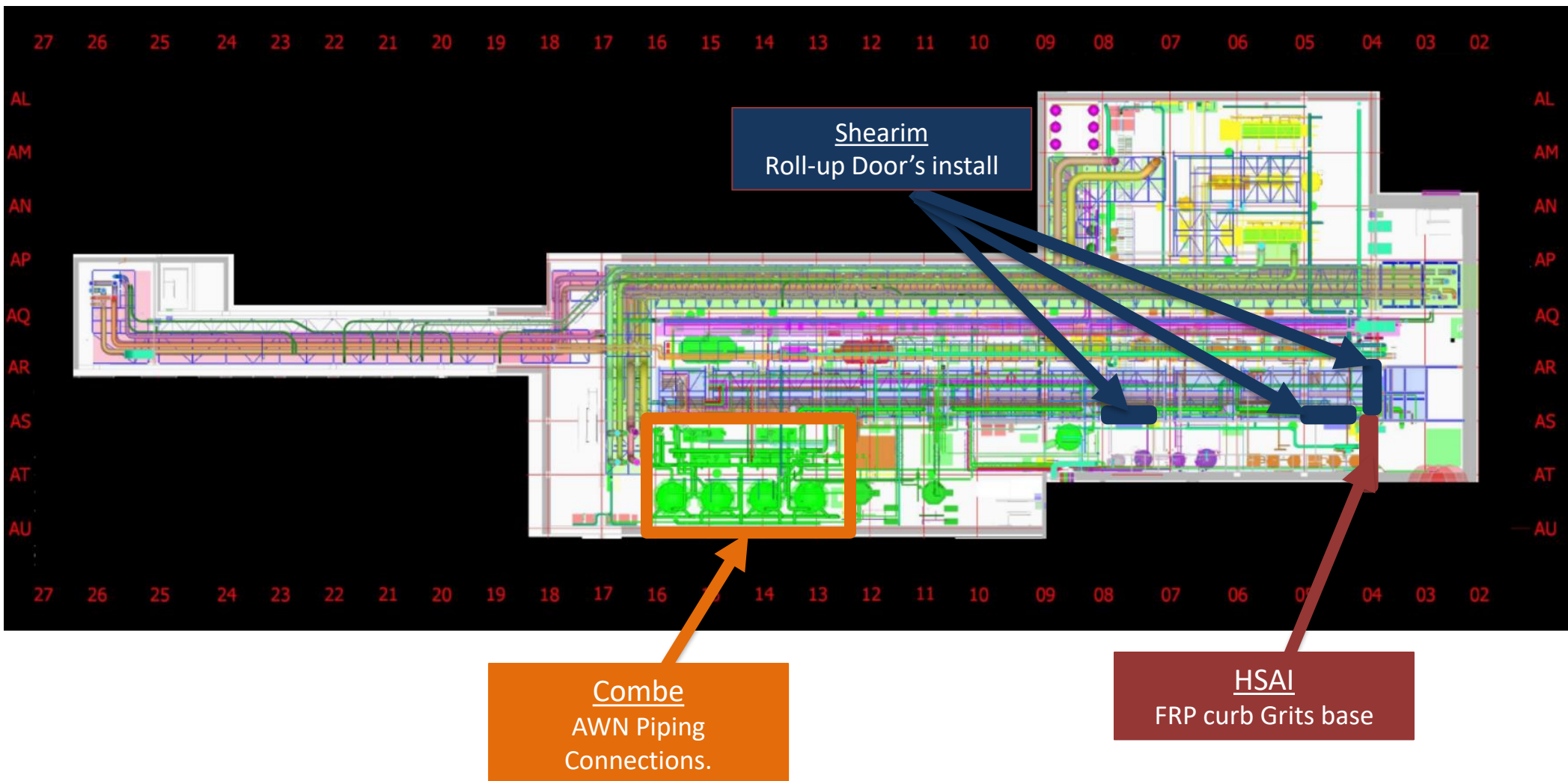
# UTILITY LEVEL MOD2





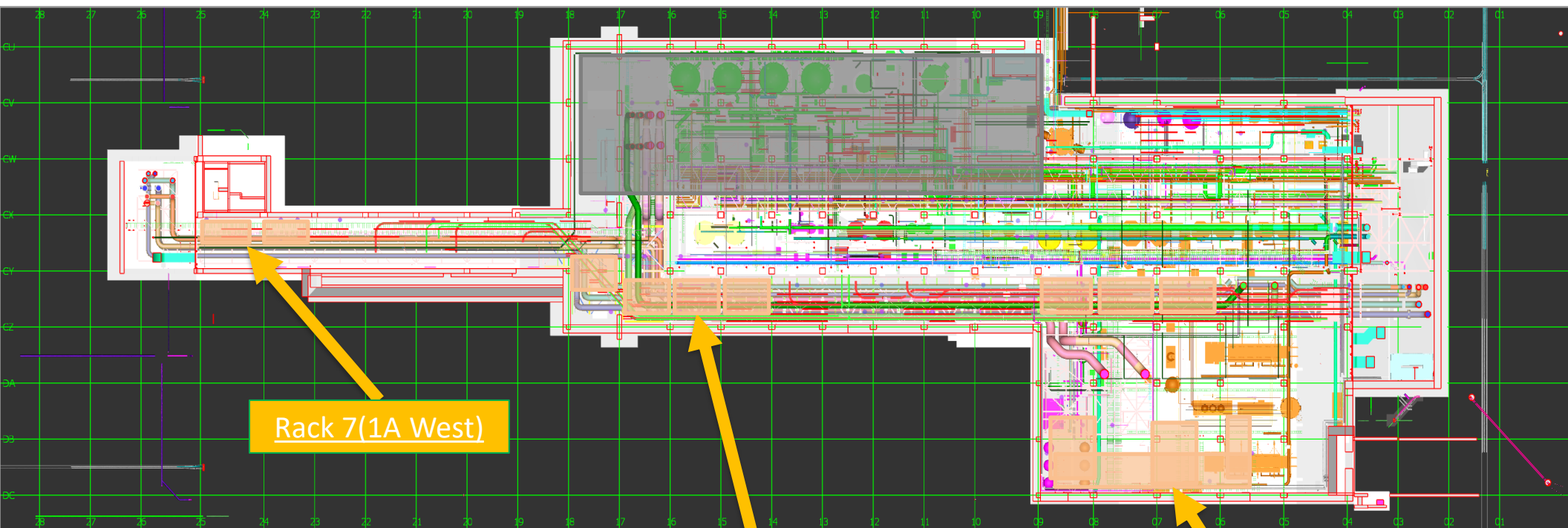


## SUT 38.1 LEVEL





## SUT 38.2 LEVEL



Rack 7(1A West)

1A Rack  
Lifting

8 Rack

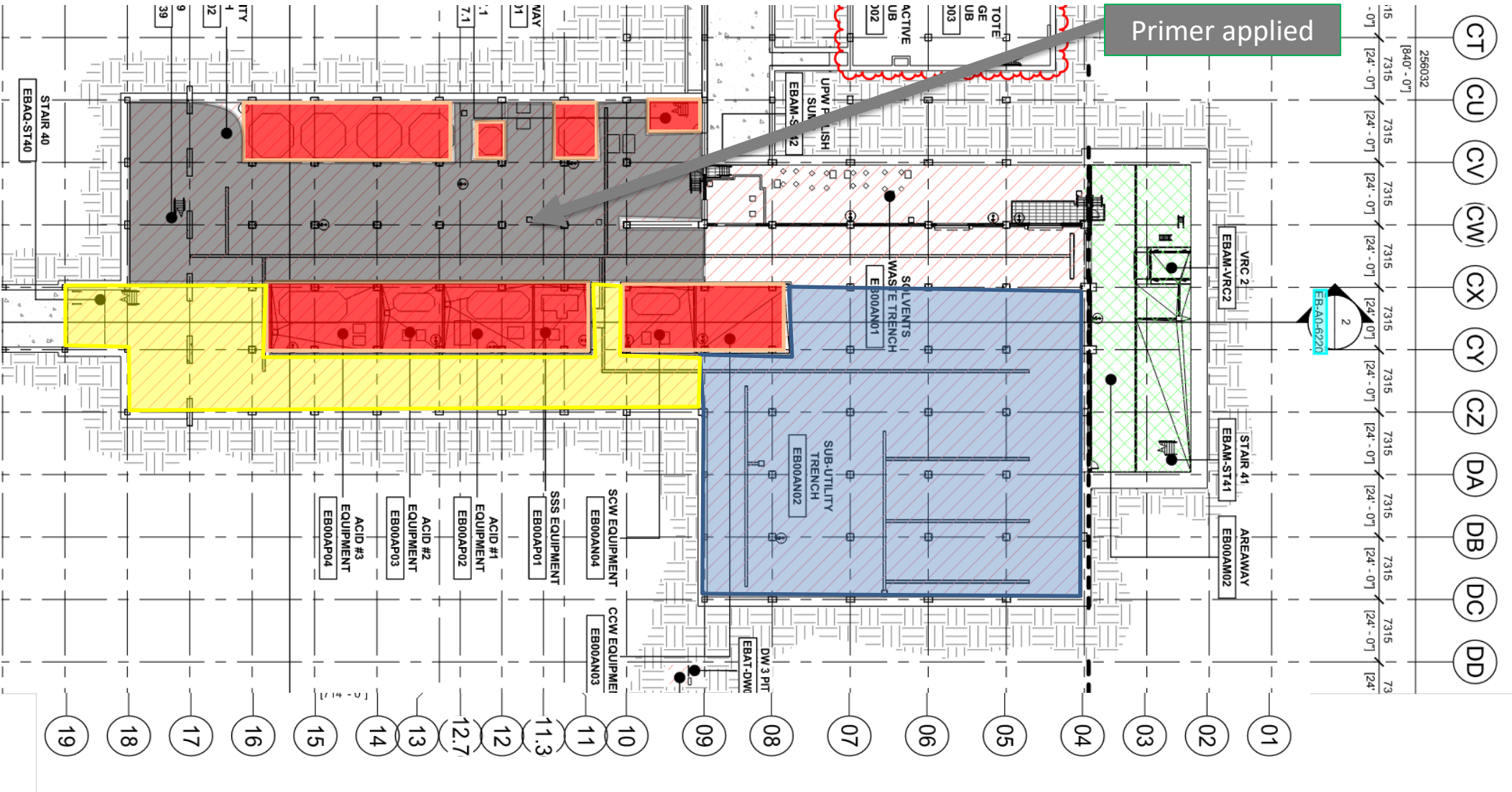
SKE  
H&T  
CRW  
Move-In date ?

Vesda  
H&T

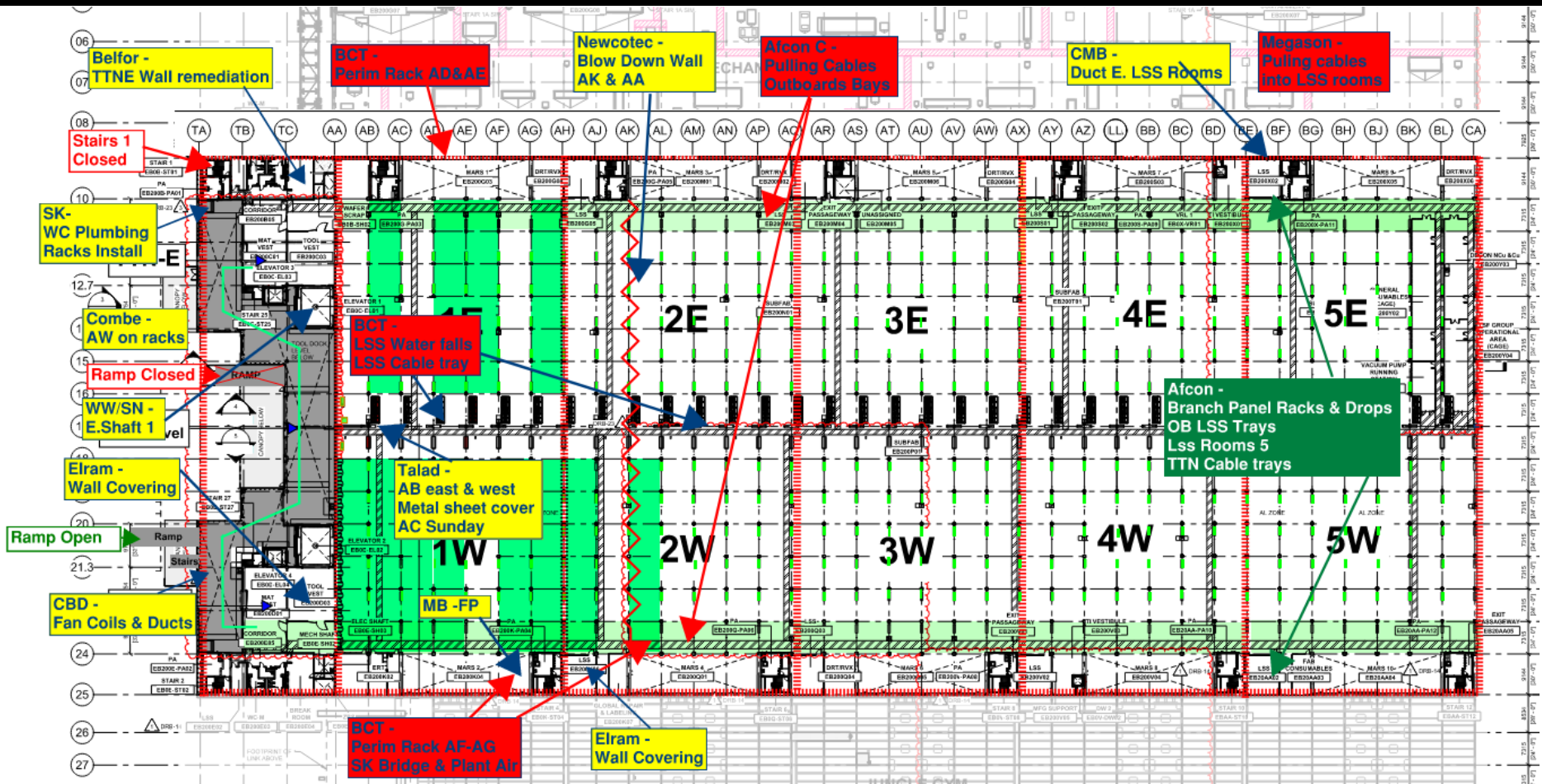




SUT 38.2 LEVEL  
CRC Plan

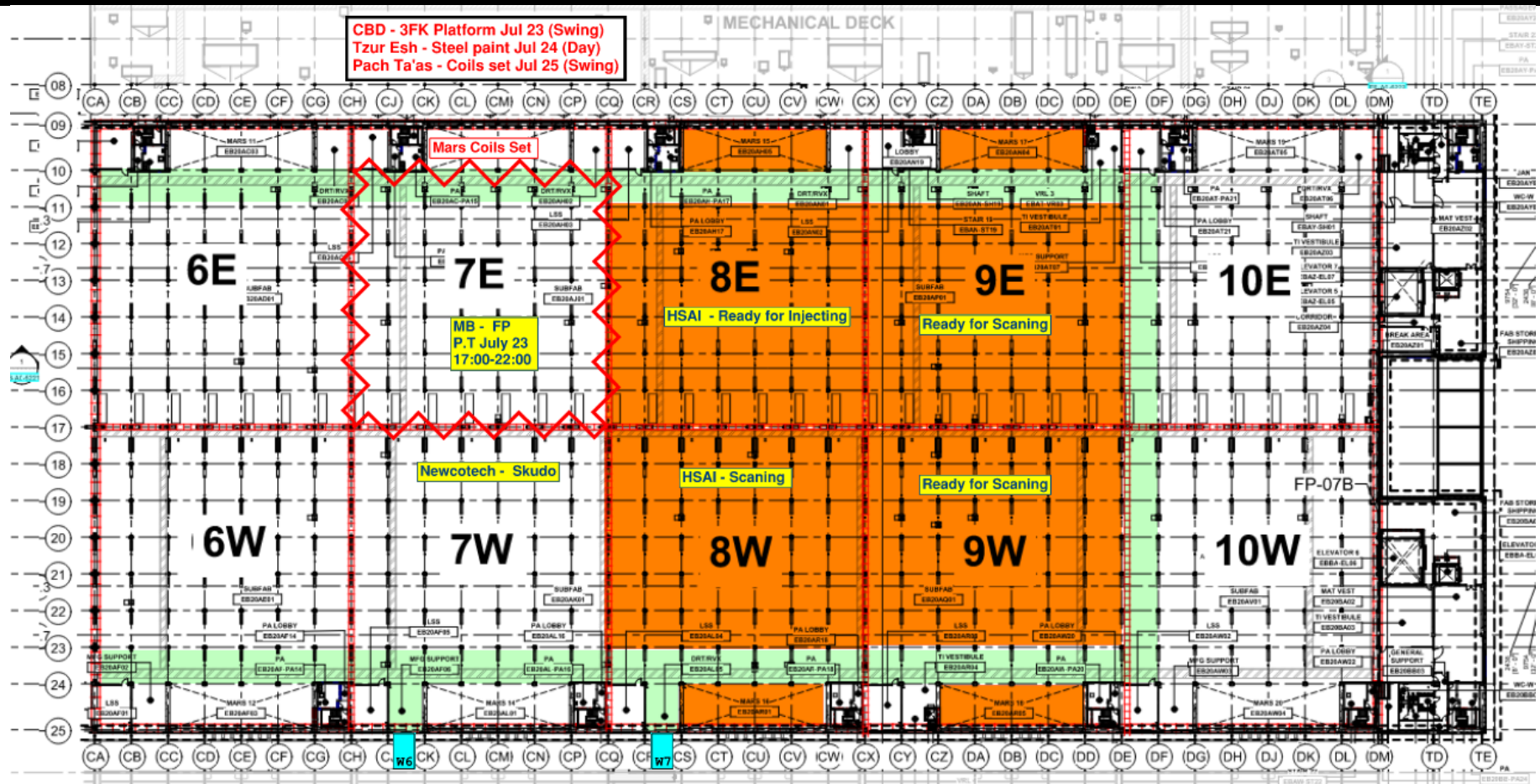


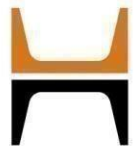
# SUBFAB BUILDOUT MOD 1

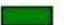




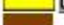








# SUBFAB BUILDOUT MOD 2



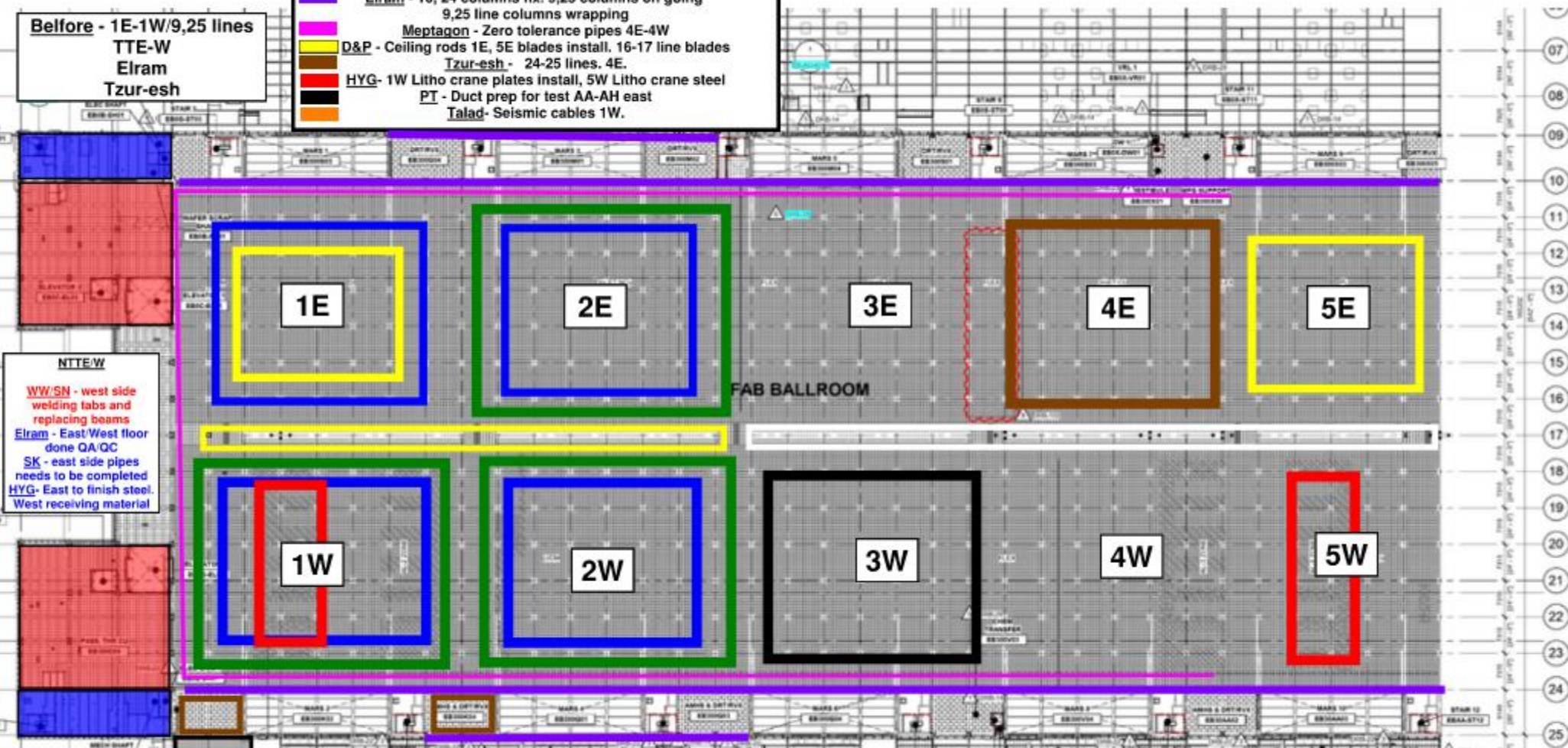


CR level:	
	Afcon - Cable trays, modules and stickers 1W, 2E, 2W
	MB - 1E drops, 1W drops. 2E-2W IFF approved
	Elram - 10, 24 columns fix. 9, 25 columns on going
	9, 25 line columns wrapping
	Meptagon - Zero tolerance pipes 4E-4W
	Tzur-esh - 24-25 lines. 4E.
	D&P - Ceiling rods 1E, 5E blades install. 16-17 line blades
	HYG - 1W Litho crane plates install, 5W Litho crane steel
	PT - Duct prep for test AA-AH east
	Talad - Seismic cables 1W.

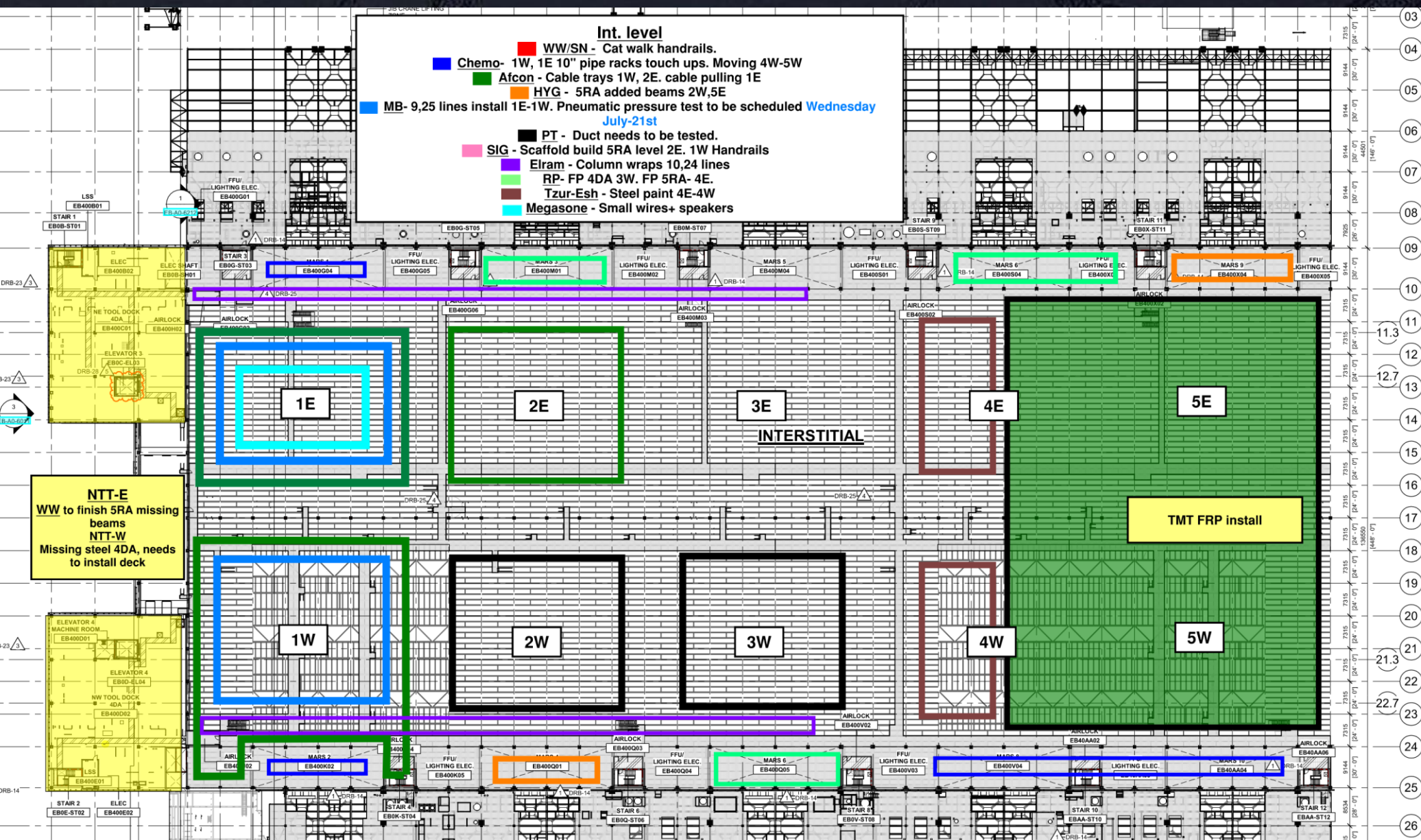
**Belfore - 1E-1W/9, 25 lines**  
**TTE-W**  
**Elram**  
**Tzur-esh**

**NTE-W**  
**WW/SN** - west side welding tabs and replacing beams  
**Elram** - East/West floor done QA/QC  
**SK** - east side pipes needs to be completed  
**HYG** - East to finish steel  
**West** receiving material

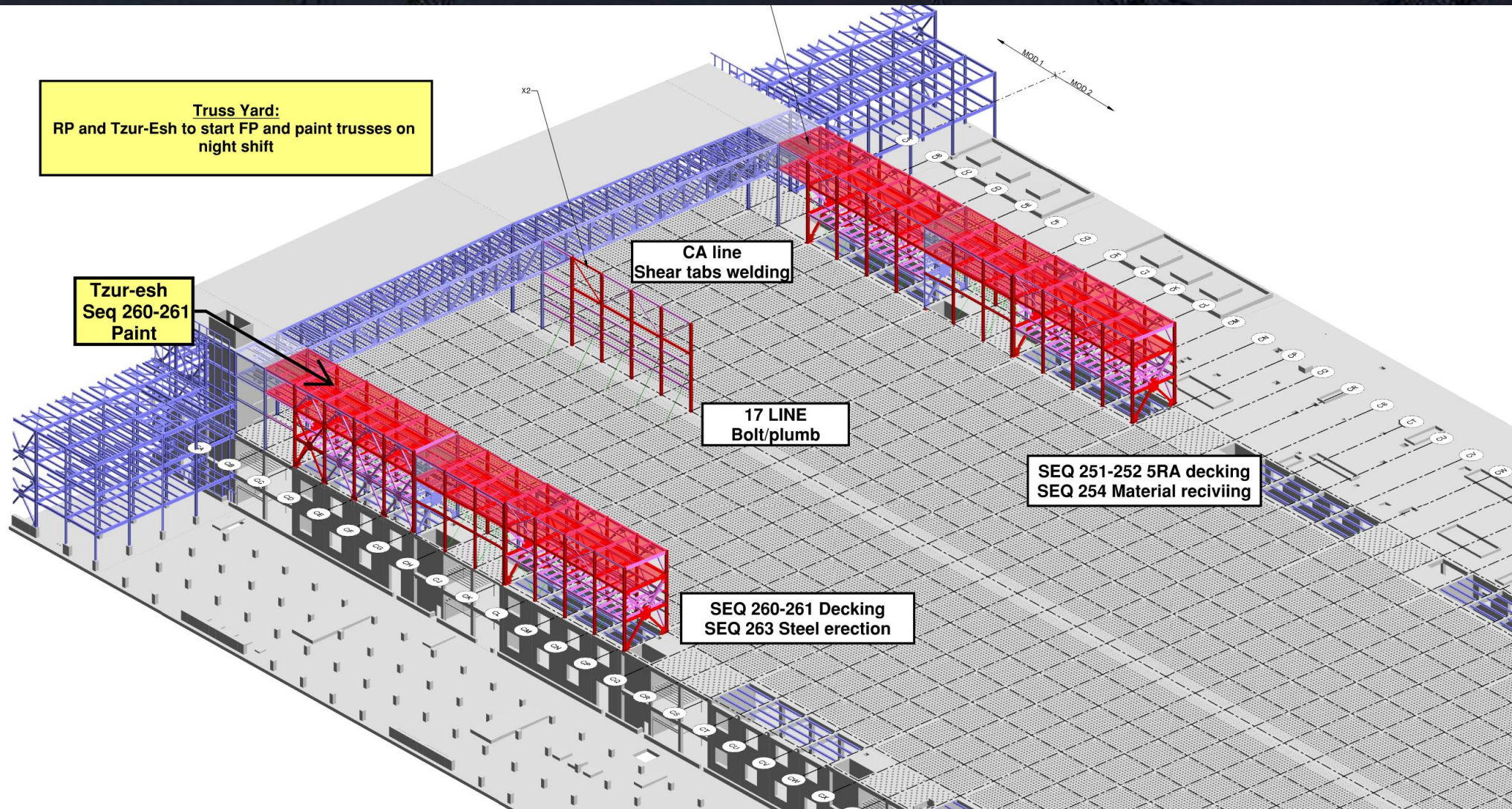
**Link**  
**RP** - Fire proofing  
**D&P** - Bolts torque











**Truss Yard:**  
RP and Tzur-Esh to start FP and paint trusses on night shift

**Tzur-esh**  
Seq 260-261  
Paint

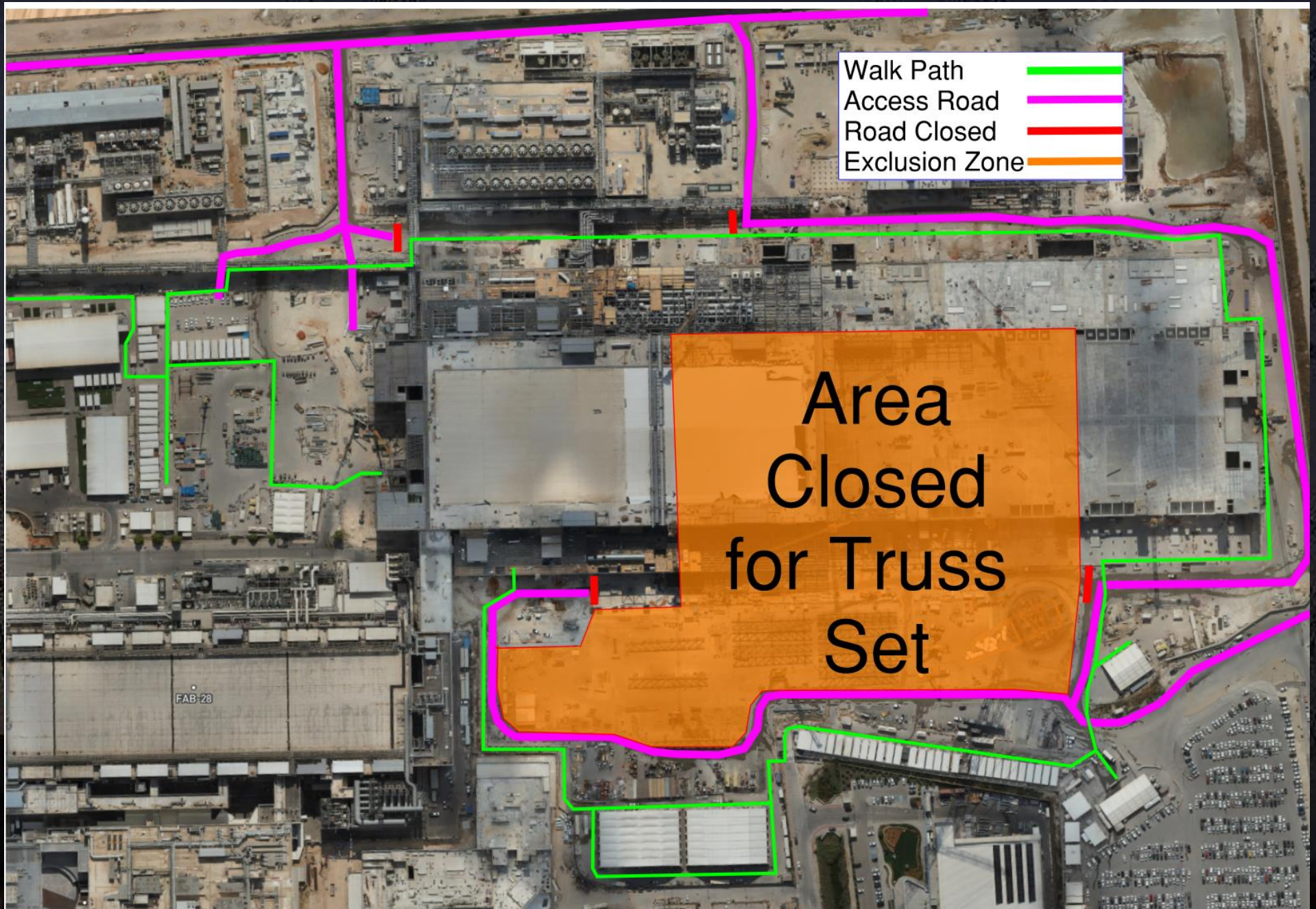
**CA line**  
Shear tabs welding

**17 LINE**  
Bolt/plumb

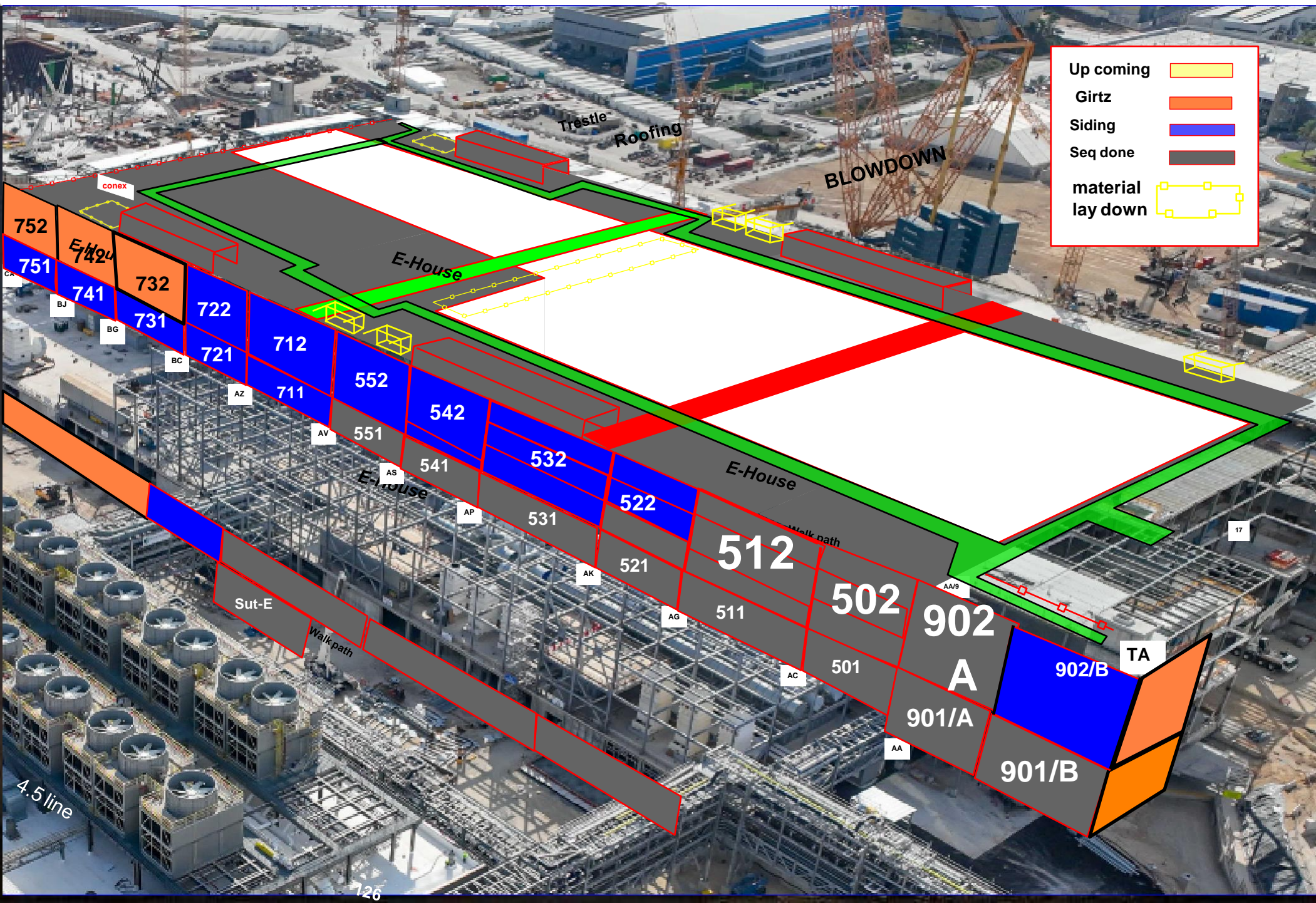
**SEQ 251-252 5RA decking**  
**SEQ 254 Material receiving**

**SEQ 260-261 Decking**  
**SEQ 263 Steel erection**

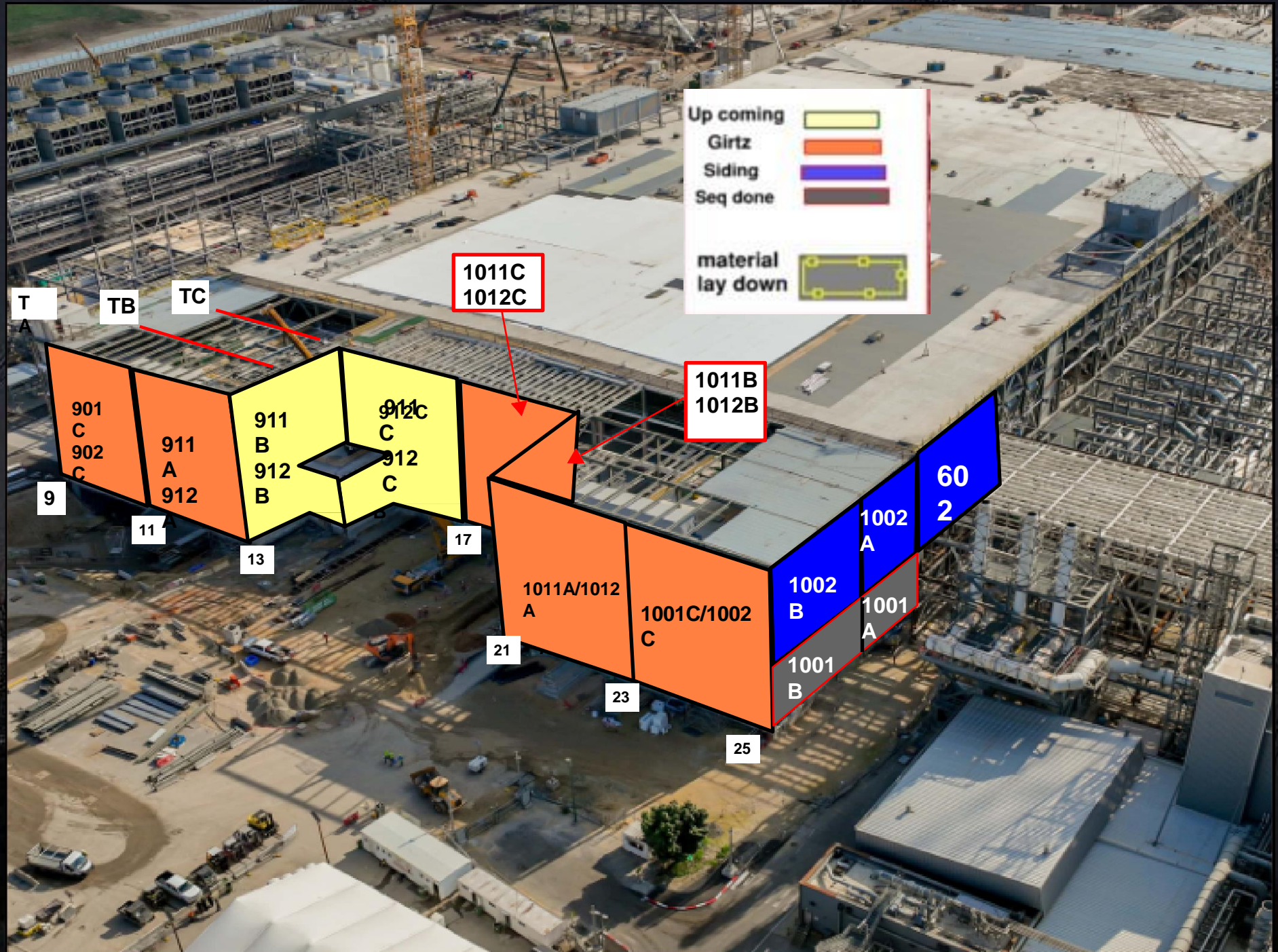




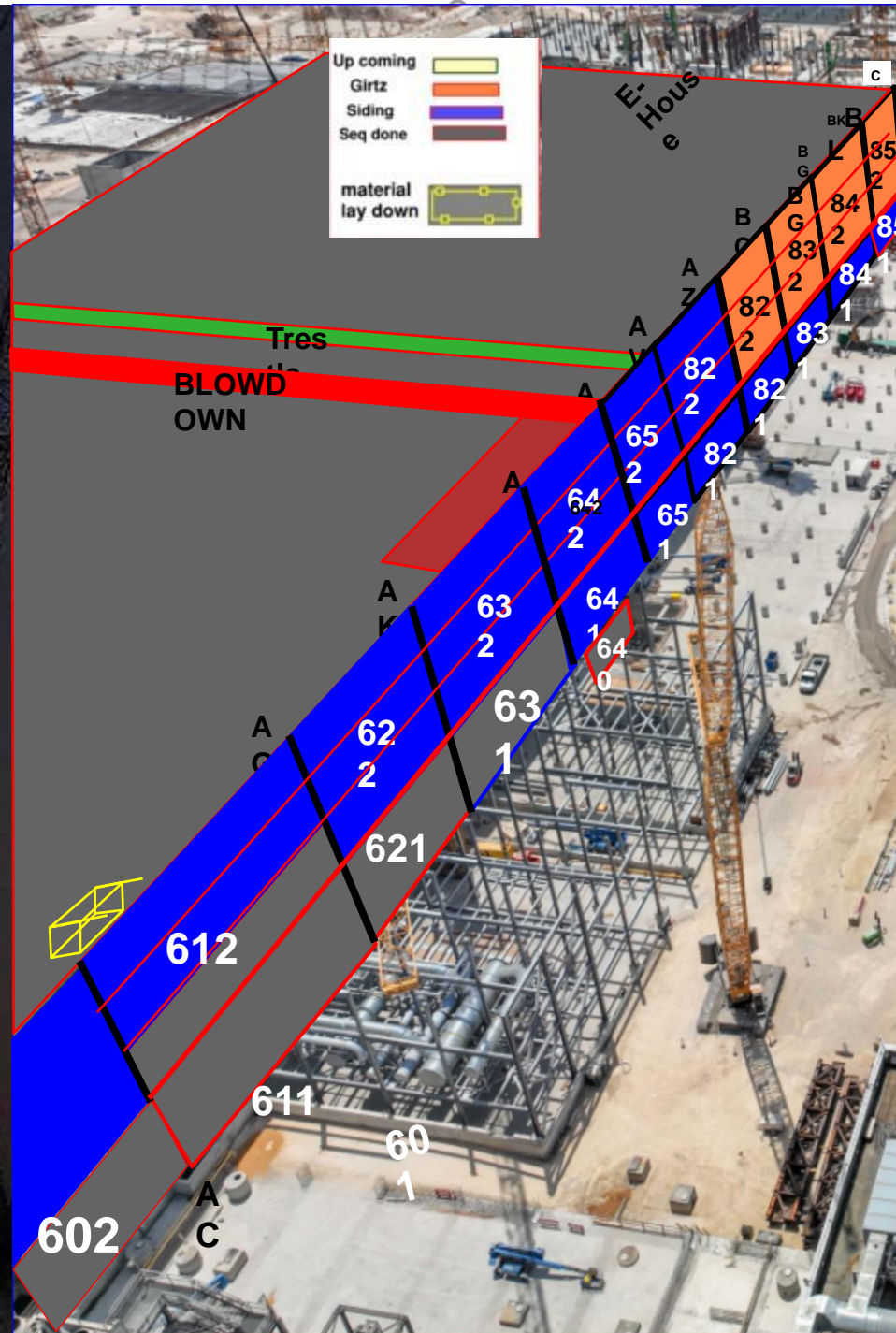










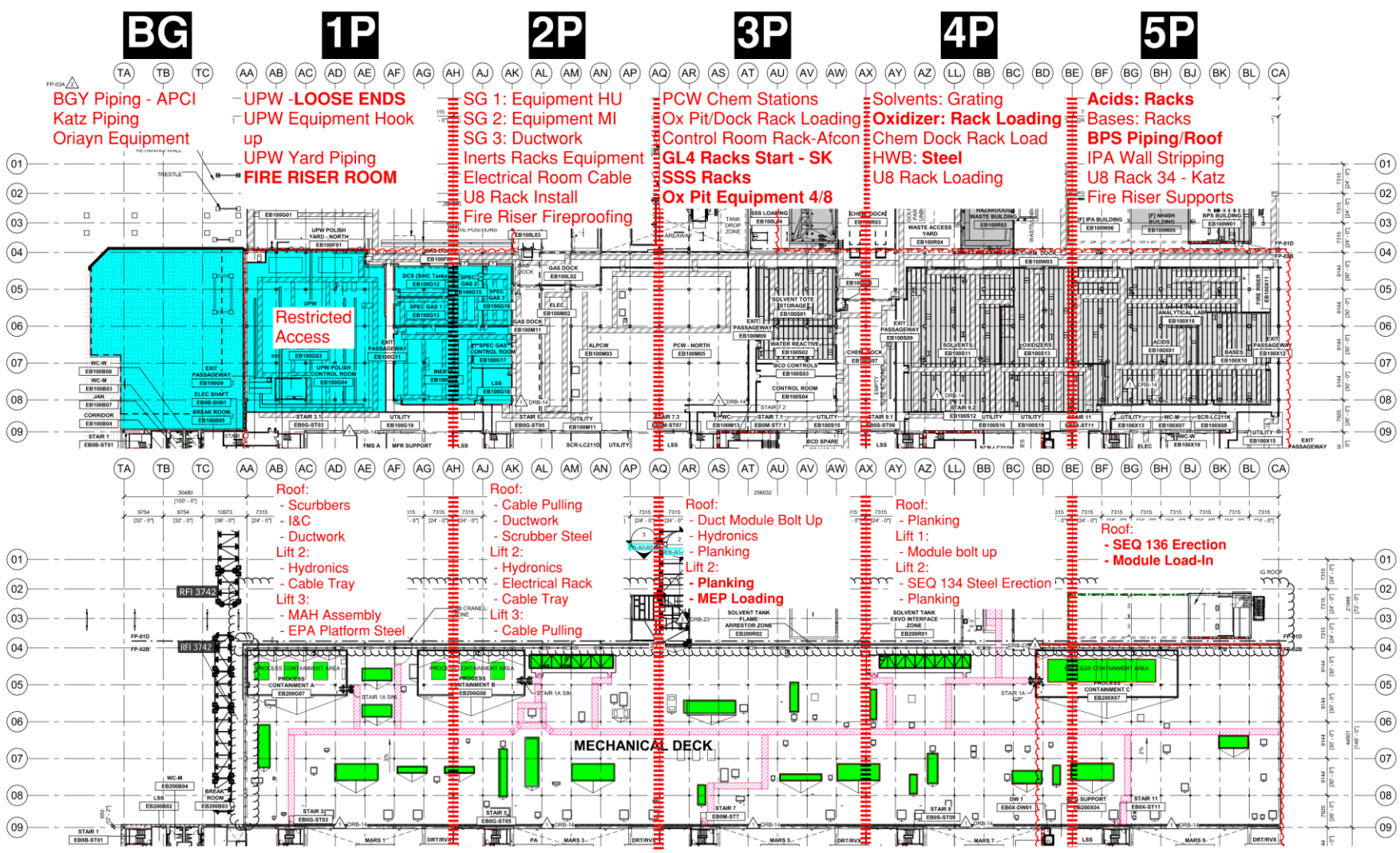




# PSSS.1

Utility Level  
1YA

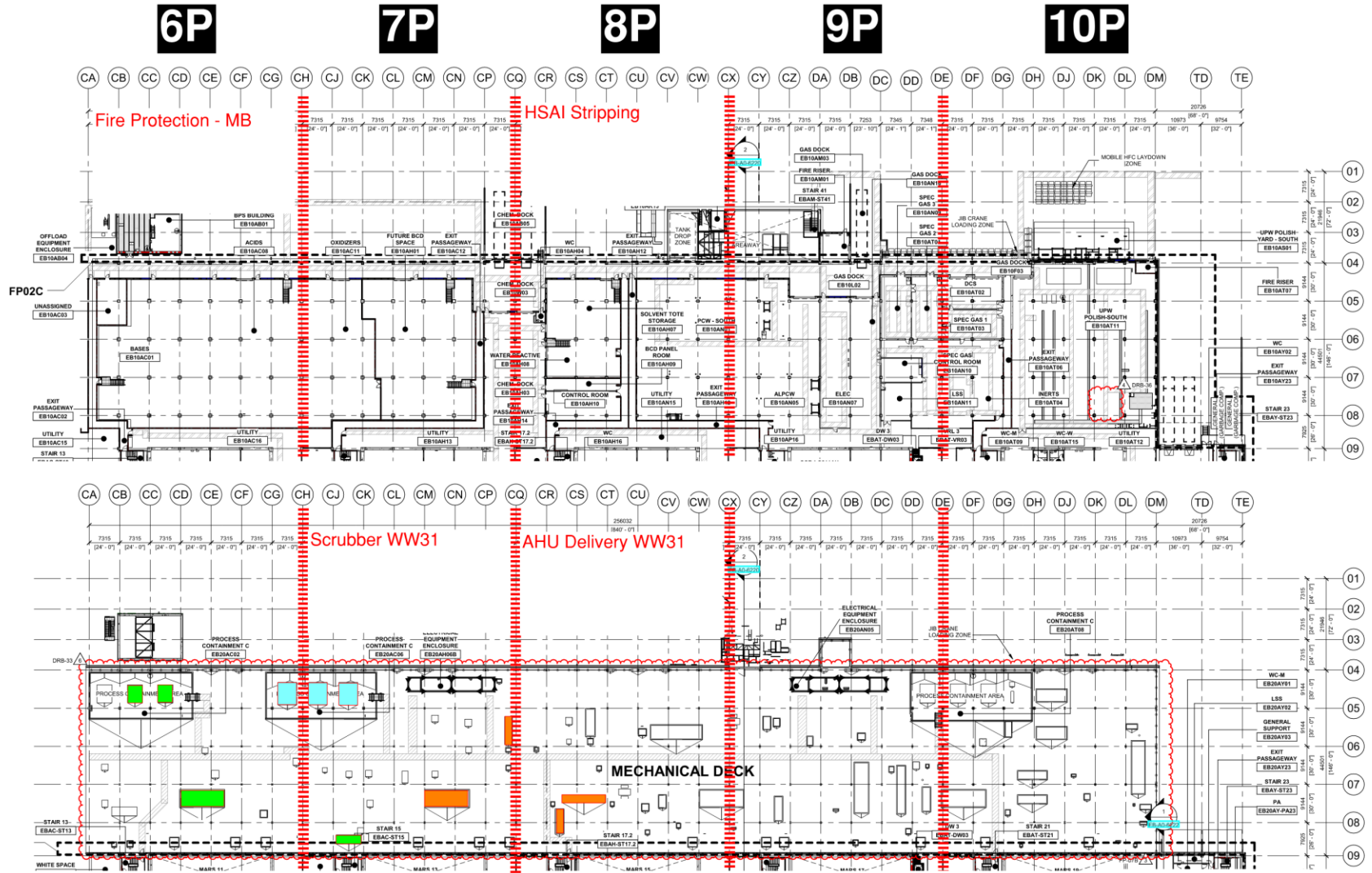
PSSS Roof  
2SA



# PSSS.2

## Utility Level 1YA

# PSSS Roof 2SA







# WJG 01J, 02J LIFT 2 & 3





# WJG 03J, 04J, 05J LIFT 2 & 3





1J 2J 3J 4J 5J

Need Scaffold Removal Sun/Mon

CLOSED FOR STEEL ERECTION

CHEM STAGING

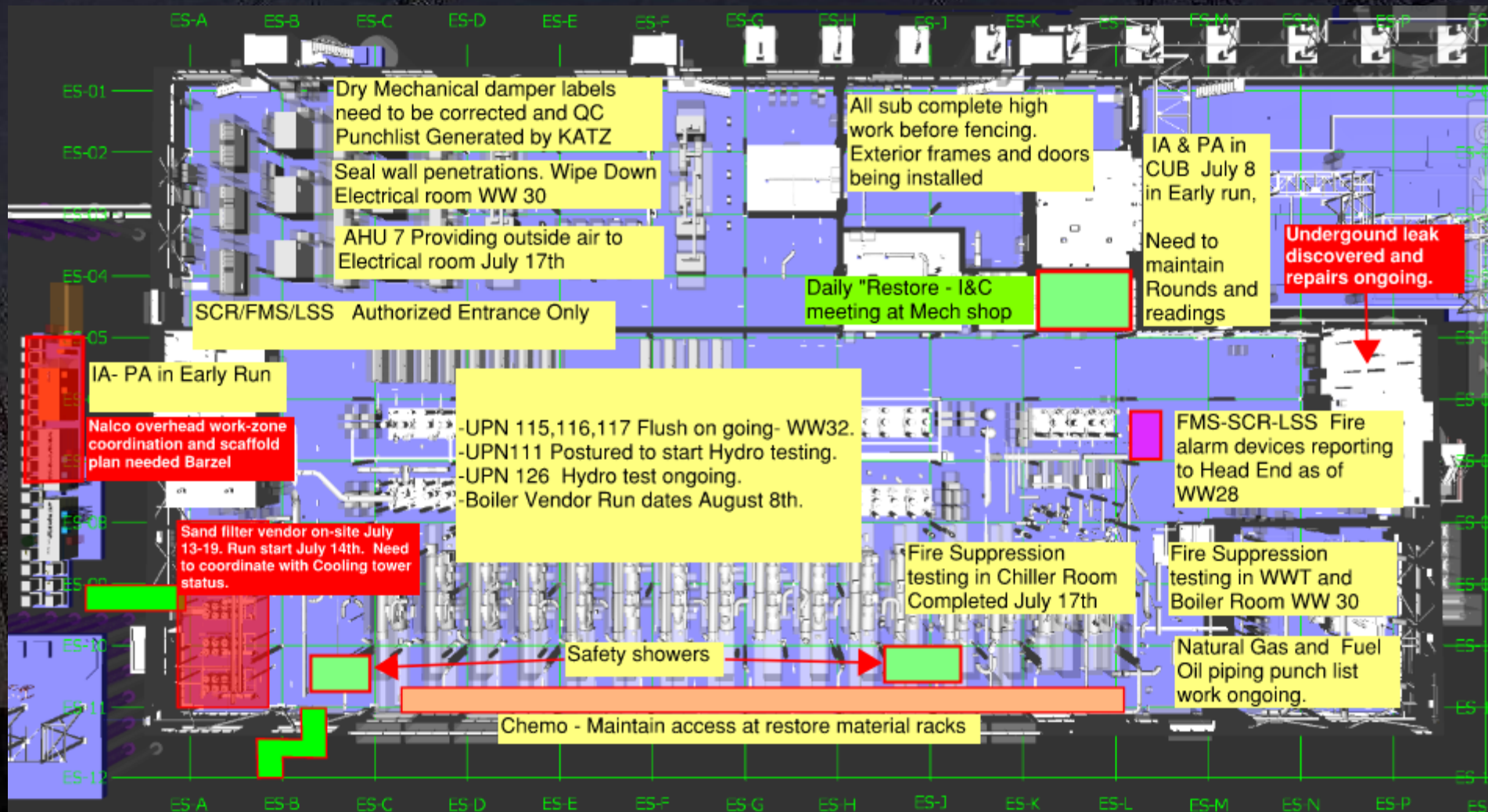
JIB CRANE LANDING ZONE

Carmel Bidud - Ductwork  
Pach Taas - Ductwork (UPN138)  
SKE - DW/ CD Install

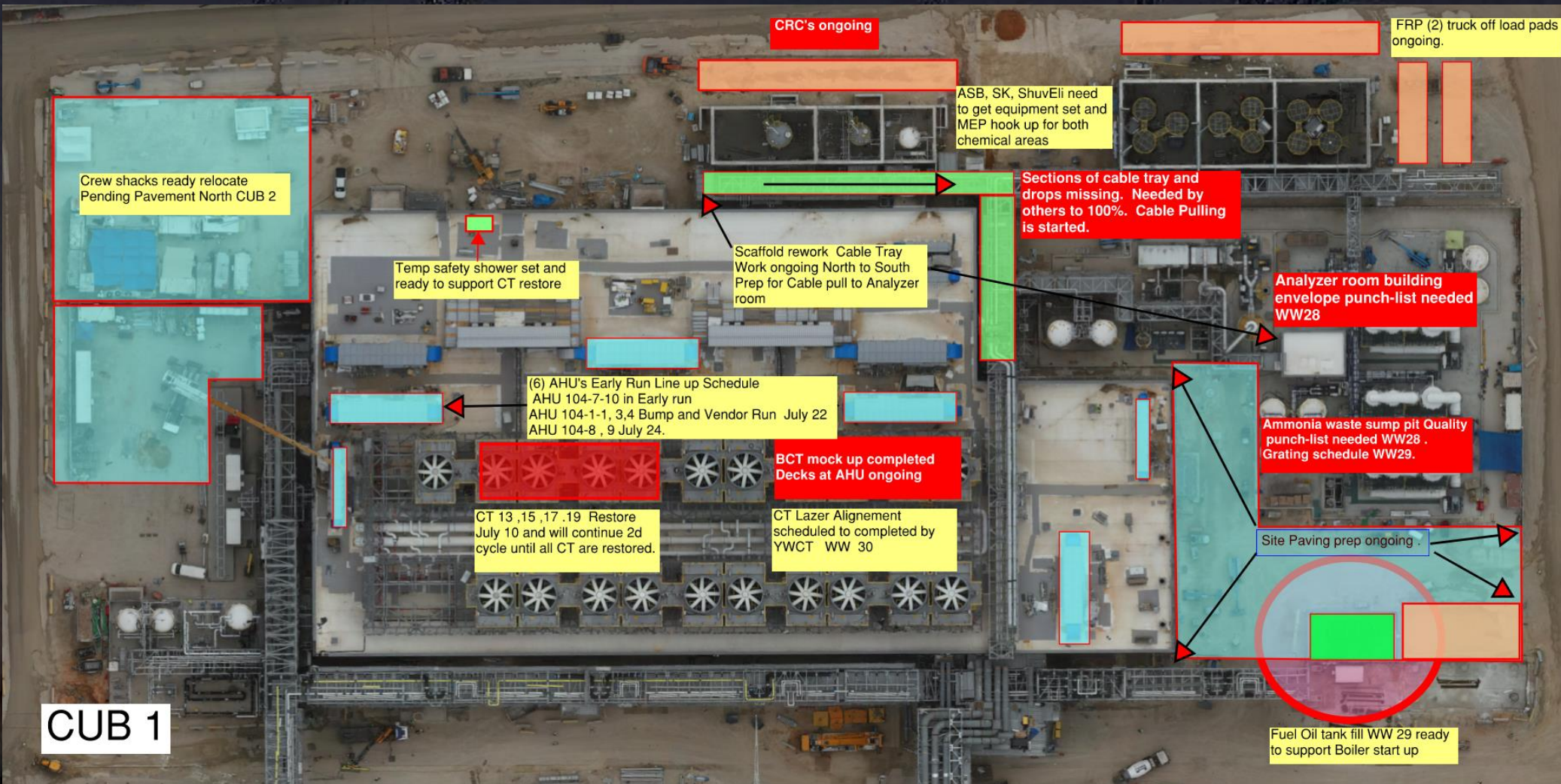
Carmel Bidud - Ductwork  
Pach Taas - Module  
Meptagon - Conduit Install

Carmel Bidud - Ductwork  
Lesico NG Pipe Install (Fit Up +Welding)  
Afcon Cable Tray Install  
MB - FP Riser (DRB31)

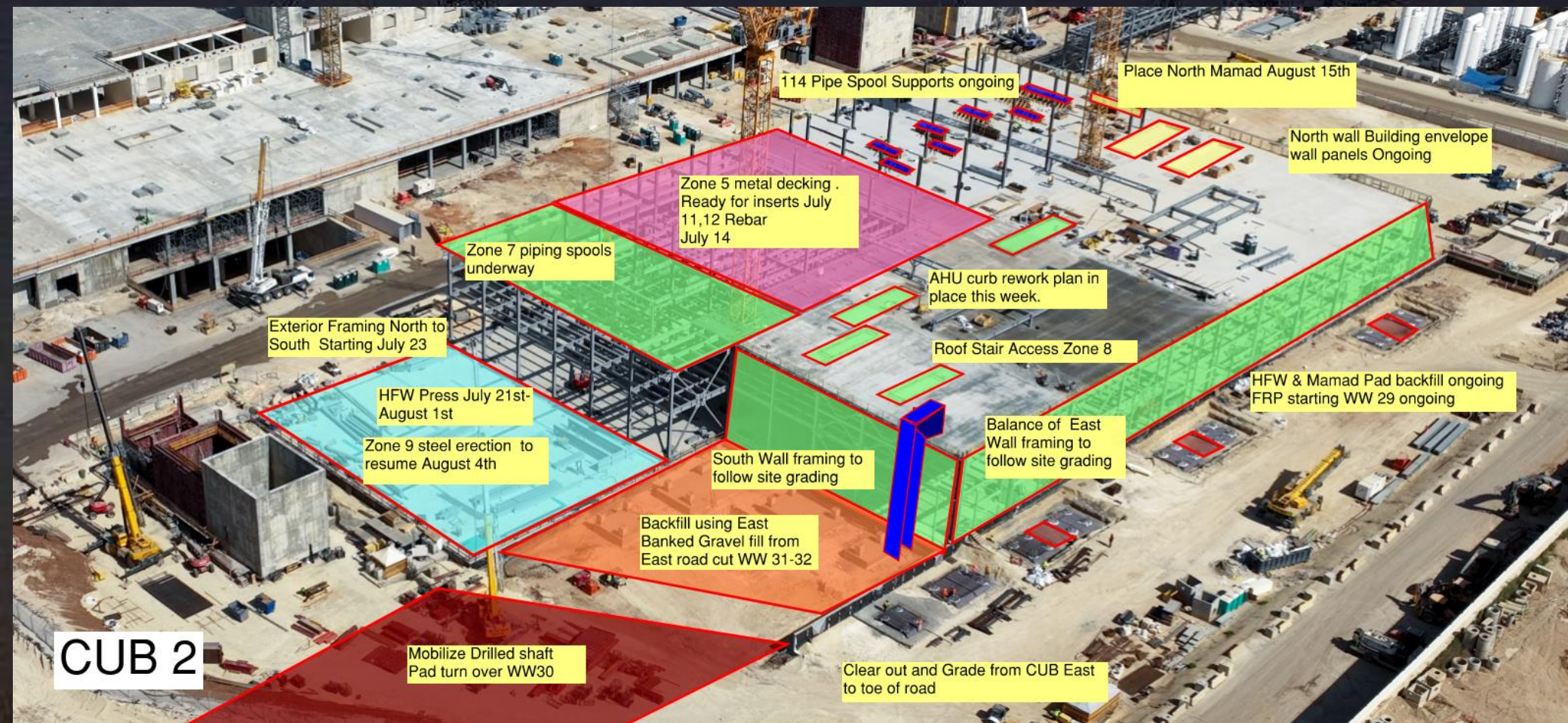
Chemo - Pipe Install

















Trench lids will be instal 5/9/24  
complete your sow before.

crane  
locati  
on

#### HRA AREA

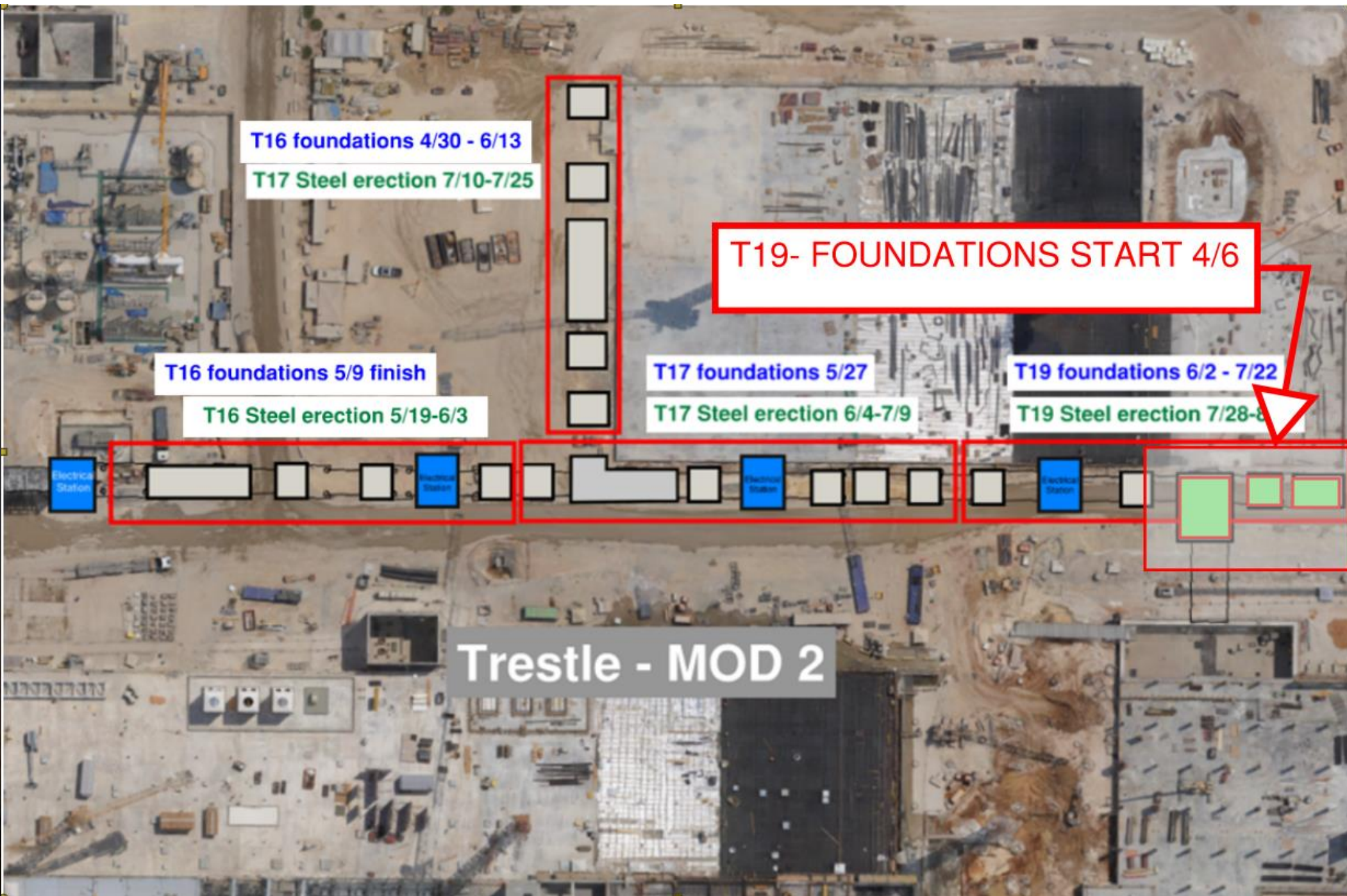
Planning machinery-  
truck, boom lift, fork  
... etc work- requires  
coordination in  
advance Hcc Sup &  
meet the requirement  
before starting work  
to insure not damage  
facilities

For all subs  
for compeleting SOW to submit microshedule till  
25.07.24 for each sow , including disconnect &  
evacuate trailers & material & must comply with  
P6 SCHEDULE 100%  
after NEY area turned to intel need sipp all NEY



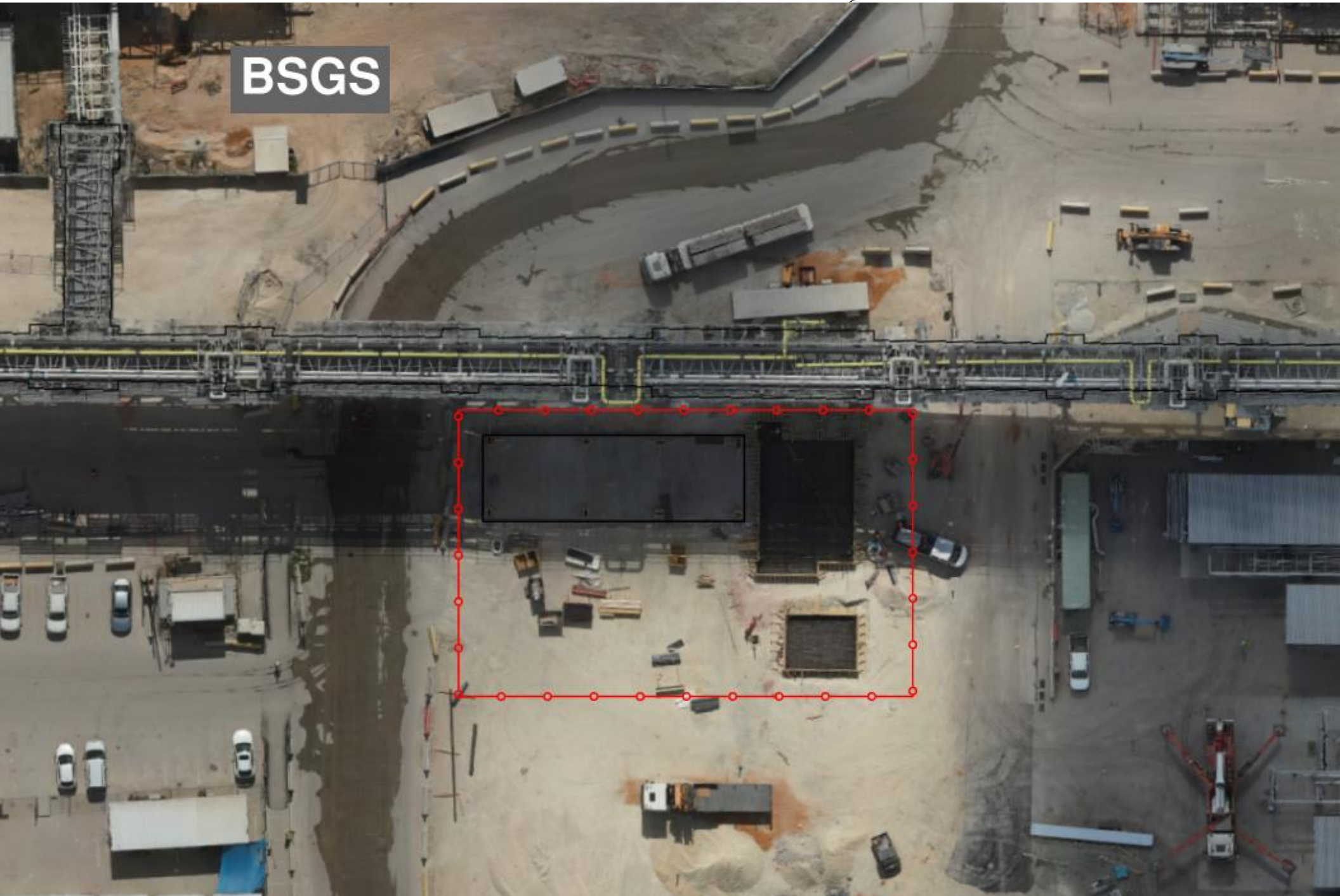








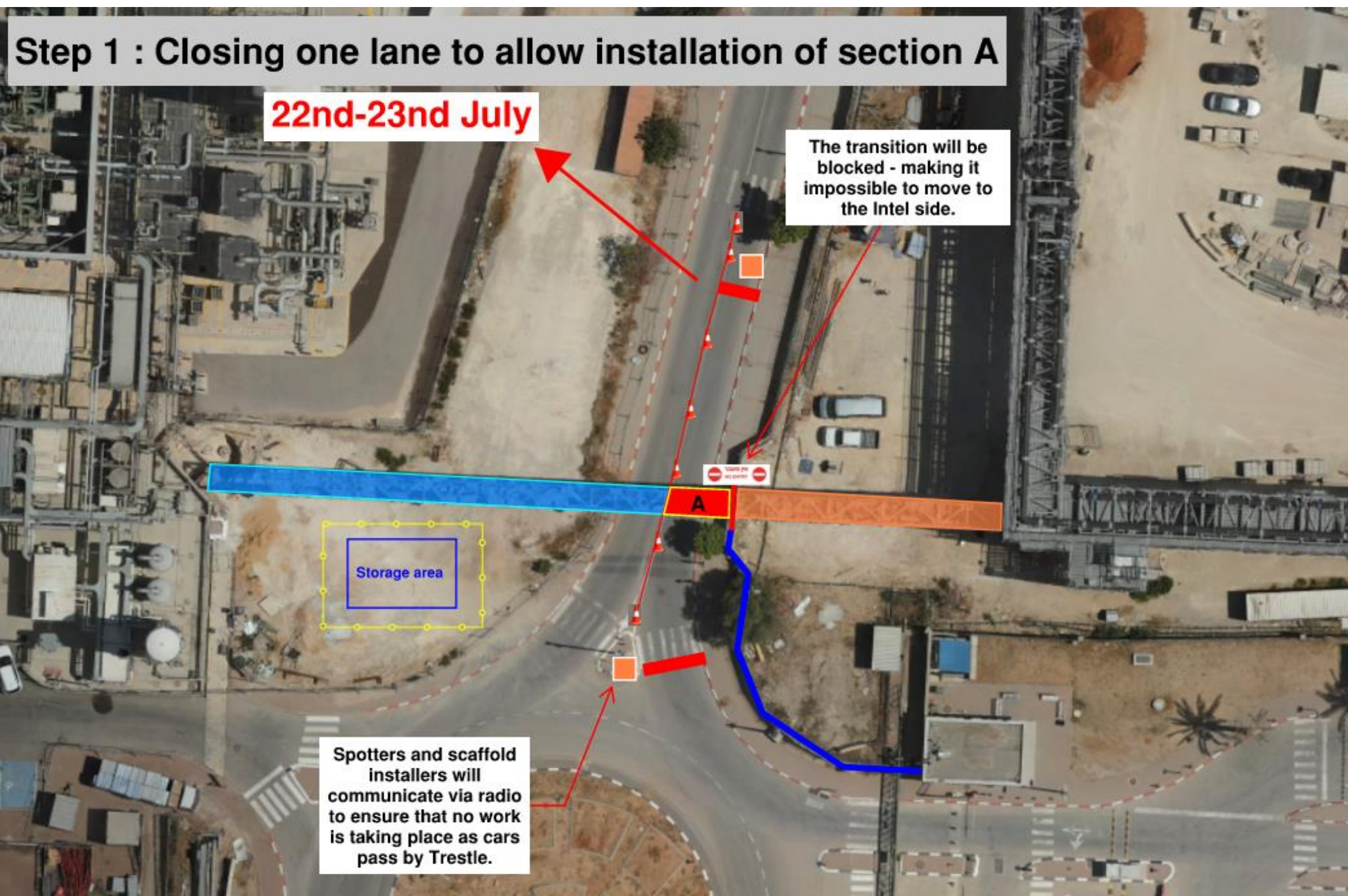
**BSGS**











**Step 1 : Closing one lane to allow installation of section A**

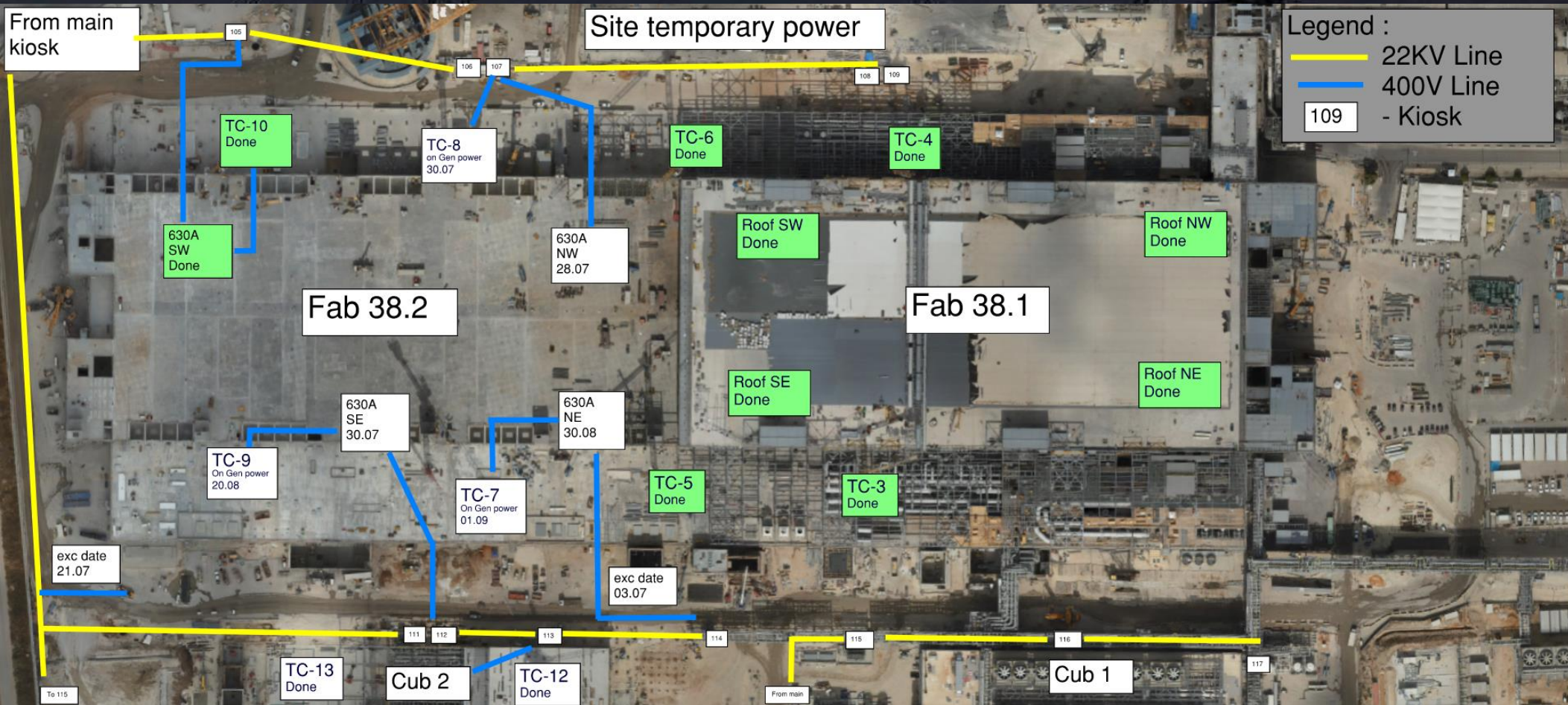
**22nd-23rd July**

The transition will be blocked - making it impossible to move to the Intel side.

Spotters and scaffold installers will communicate via radio to ensure that no work is taking place as cars pass by Trestle.



# Daily Coordination Meeting





# Daily Coordination Meeting

Site Logistics  
North Gate B

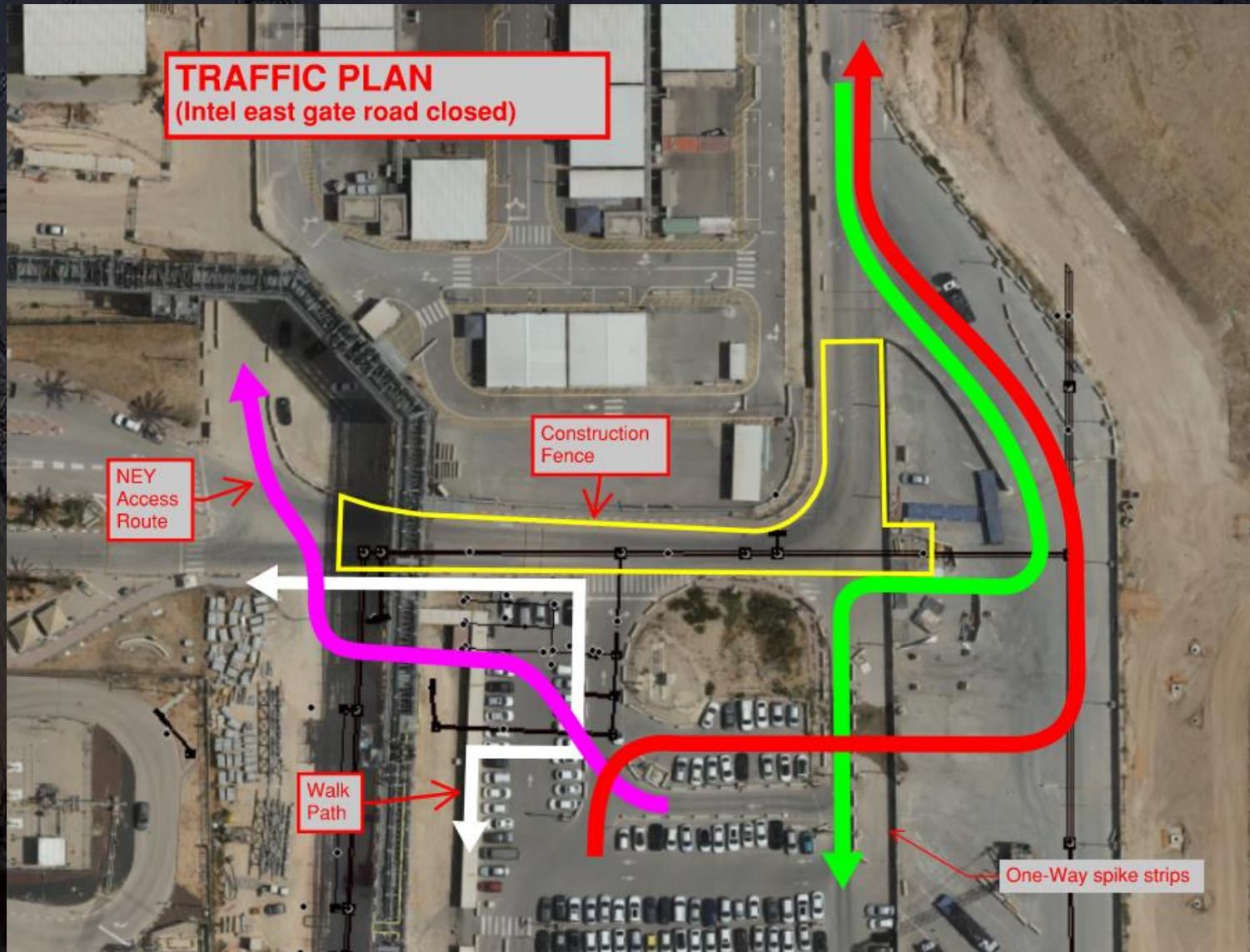




# Daily Coordination Meeting

## Site Logistics

### Traffic Plan

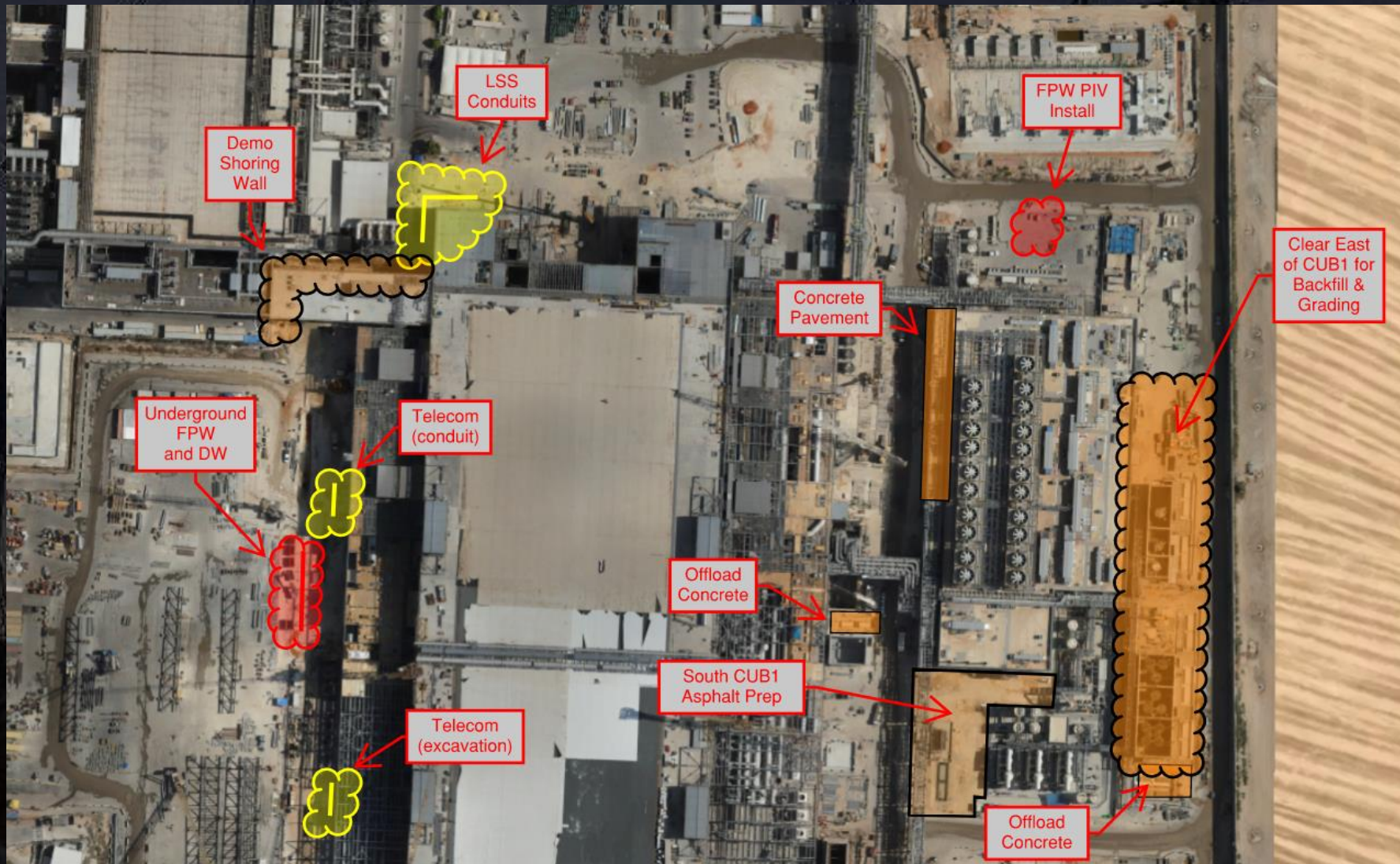




# Daily Coordination Meeting

## Site Logistics

### North





# Daily Coordination Meeting

## Site Logistics

## South





# Daily Coordination Meeting

Site Logistics  
SW Parking  
Sanitary





# Daily Coordination Meeting

## WATER BOTTLE FILLING & PERSONNEL COOLING STATIONS

BF (1) AT GIS









# Decommissioning Rigging

- We are noticing an increase in rigging that is too worn or damaged to be used being made unusable in the field-  
THANK YOU.
- Also, make sure that we are using softeners when there is potential for our nylon rigging to be damaged by our hoisting activities (location or load).
- When we are inspecting our rigging before use, if we find that it is not in a suitable condition, we should be rendering it unable to be used by someone else.
- Please ensure we are continuing to do this. However, if we do decommission rigging, please send a quick notice to the HCC foremen team to ensure that we are keeping our MOL logs up to date.



# Heat Index- July 22<sup>nd</sup>

Relative Humidity (%)	temperature (°F)															
	80	82	84	86	88	90	92	94	96	98	100	102	104	106	108	110
40	80	81	83	85	88	91	94	97	101	105	109	114	119	124	130	136
45	80	82	84	87	89	93	96	100	104	109	114	119	124	130	137	
50	81	83	85	88	91	95	99	103	108	113	118	124	131	137		
55	81	84	86	89	93	97	101	106	112	117	124	130	137			
60	82	84	88	91	95	100	105	110	116	123	129	137				
65	82	85	89	93	98	103	108	114	121	128	136					
70	83	86	90	95	100	105	112	119	126	134						
75	84	88	92	97	103	109	116	124	132							
80	84	89	94	100	106	113	121	129								
85	85	90	96	102	110	117	126	135								
90	86	91	98	105	113	122	131									
95	86	93	100	108	117	127										
100	87	95	103	112	121	132										

 Caution
  Extreme Caution
  Danger
  Extreme Danger

## Extreme Caution

- Ensuring water and shaded areas available
- Acclimating workers
- Emergency planning and response
- Training workers and supervisors on the signs of heat stress and preventative measures
- Modified work schedules and/or rotating out workers
- Monitoring of workers for signs of heat stress