

Daily Coordination Meeting



14:00 Sign In

Daily Coordination Meeting

General Topics:

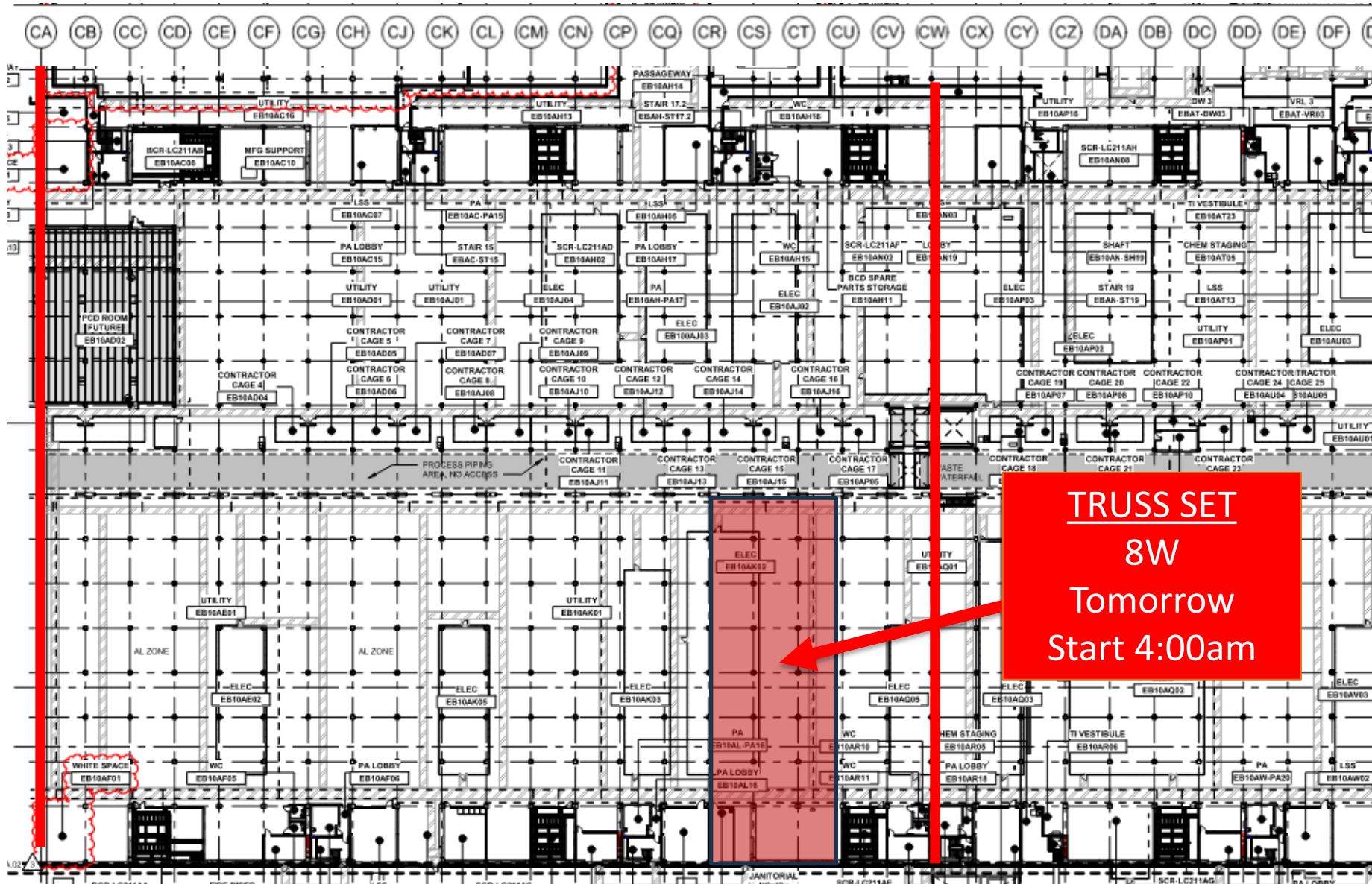
- * Subtier Subcontractor Responsibility is on You
- * Red Flags a Flying - Proper Coverage



HOFFMAN CONSTRUCTION COMPANY



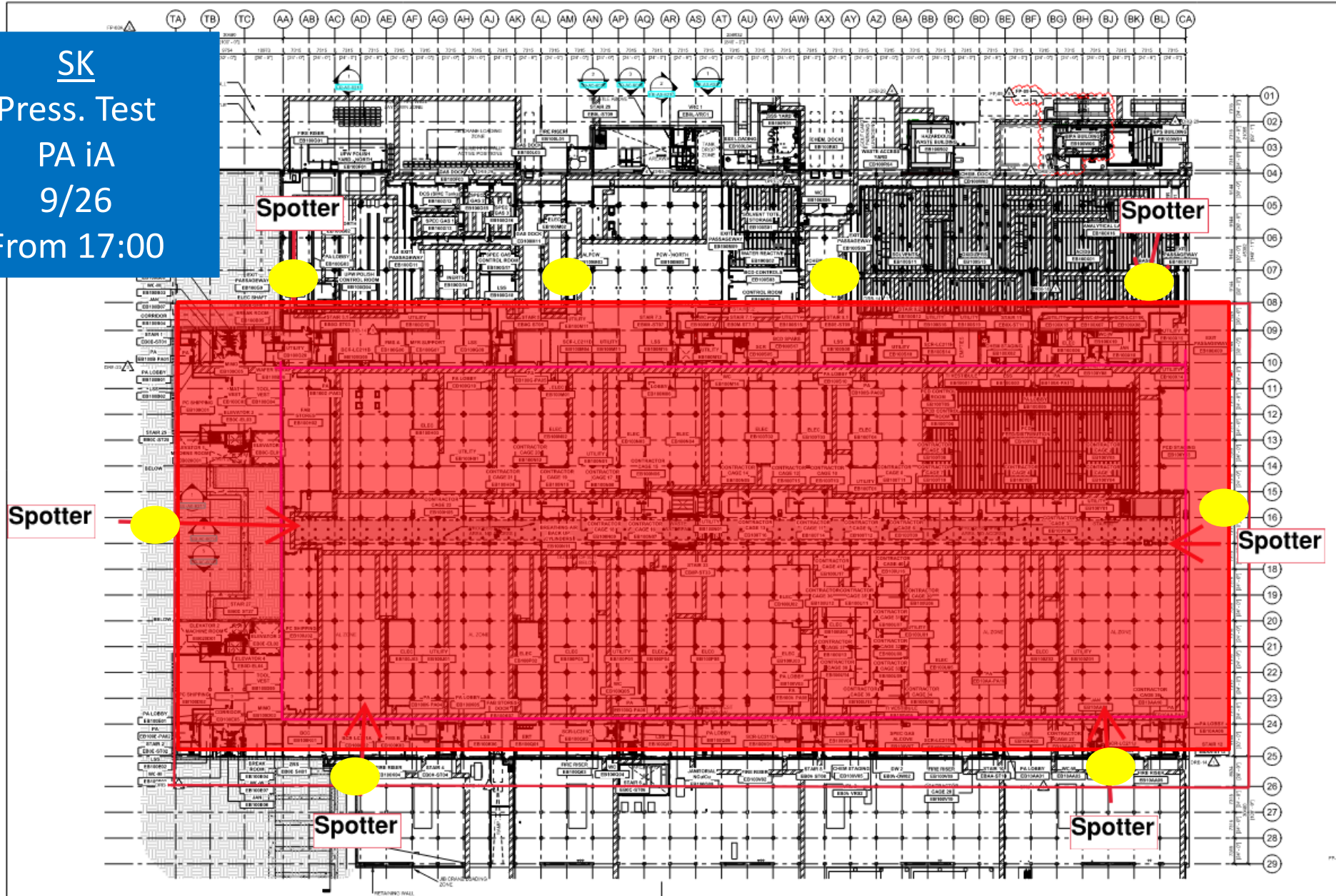
UTILITY LEVEL TRUSS





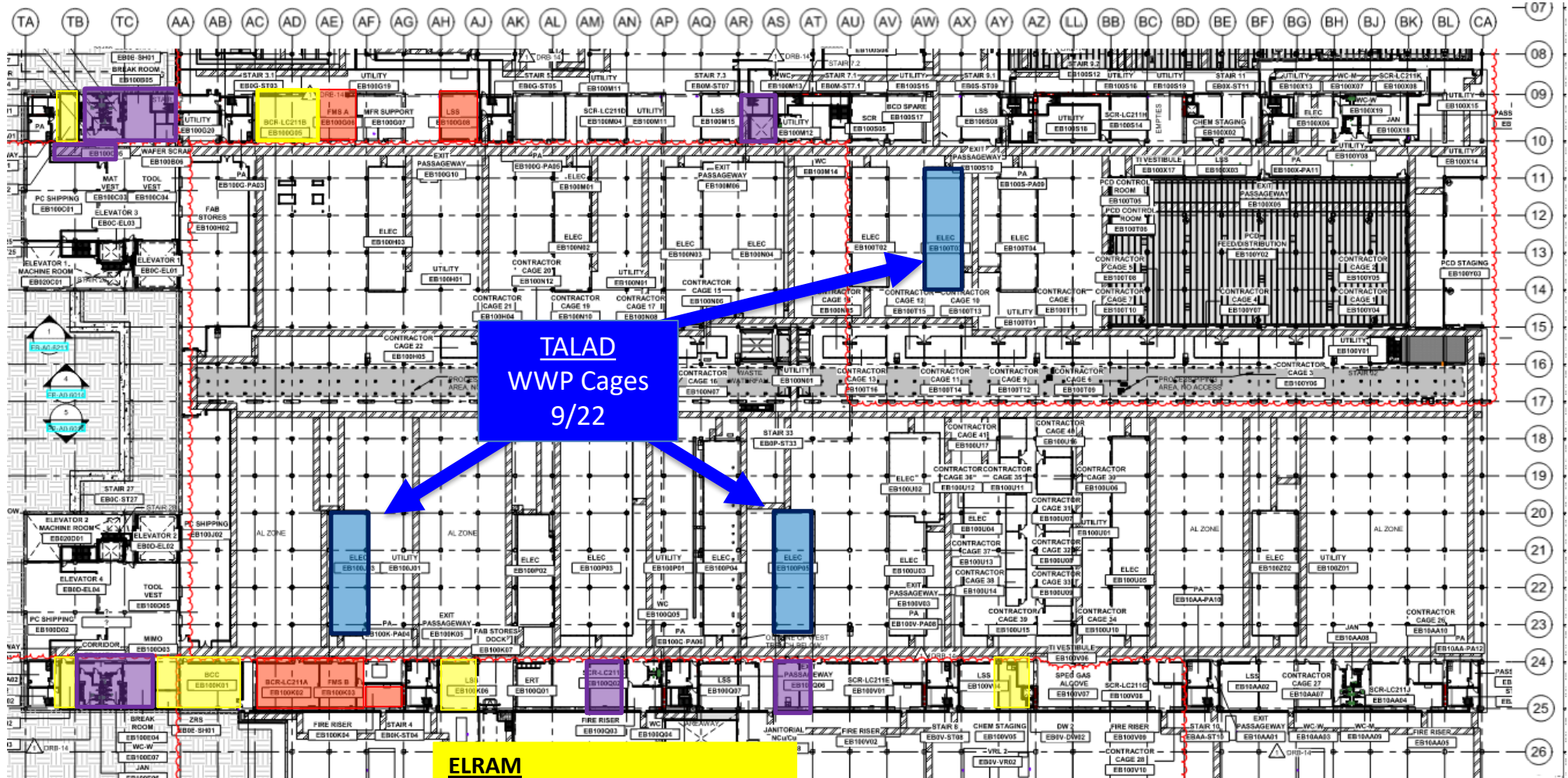
UTILITY LEVEL P.Test

SK
Press. Test
PA iA
9/26
From 17:00





UTILITY LEVEL MOD1



BELFOR

TTNE - Corridor + Toilets + Break R
Stairs 7.3
Wafer scrap
TTNW - Toilets + Break R
SCR 2W
Exit pass 3W

ELRAM

Ongoing
LSS TTNW + TTNE
BCR 1E
CHEN STAGING
LSS 2W
Chem staging
BACKING
BCR 1E+1W – Pending funding
LSS's

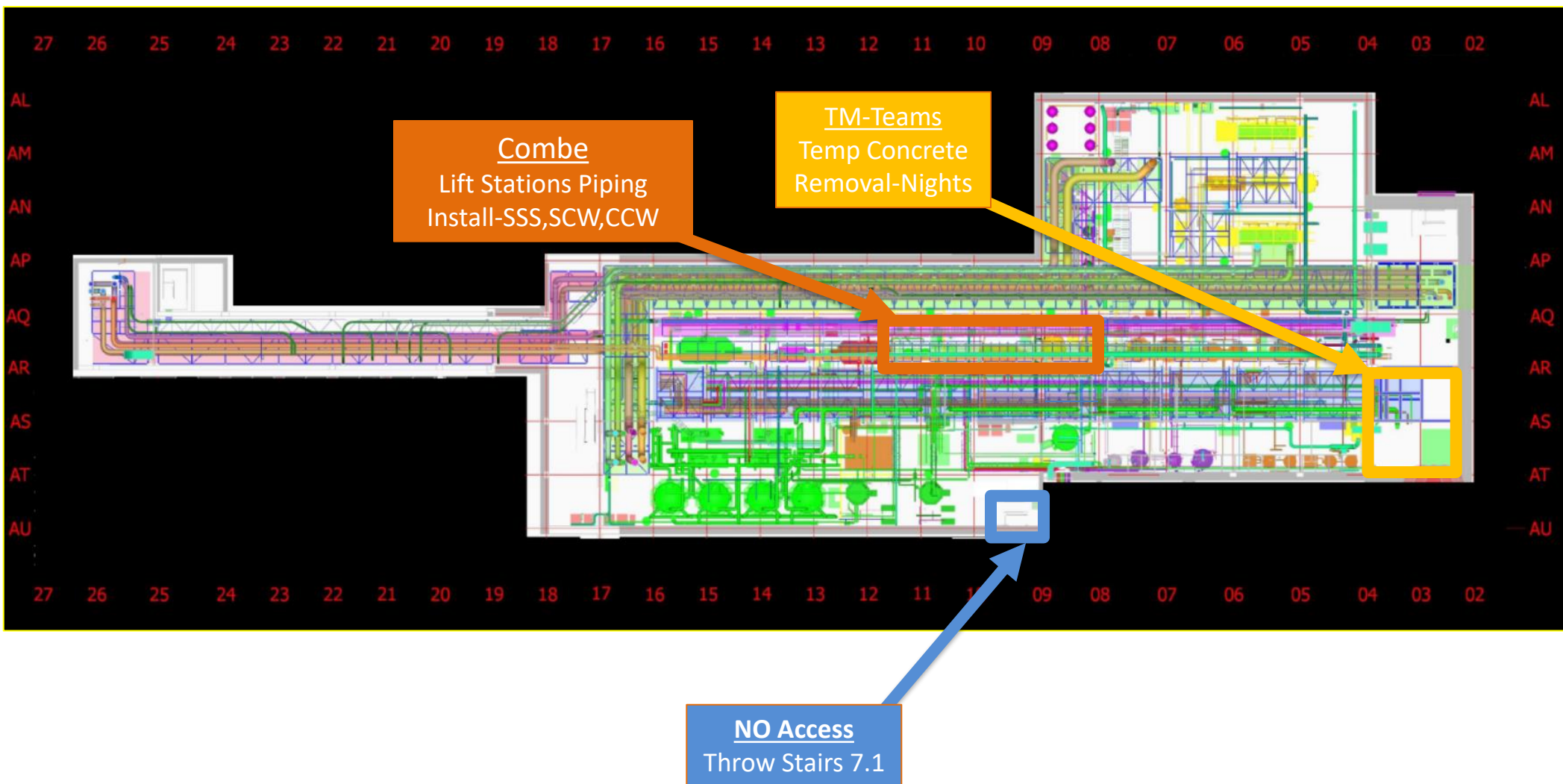
MEP+Electrical

Ready for re-install
FMS A 1E
FMS B 1W
Fire Risers 1W
BCC

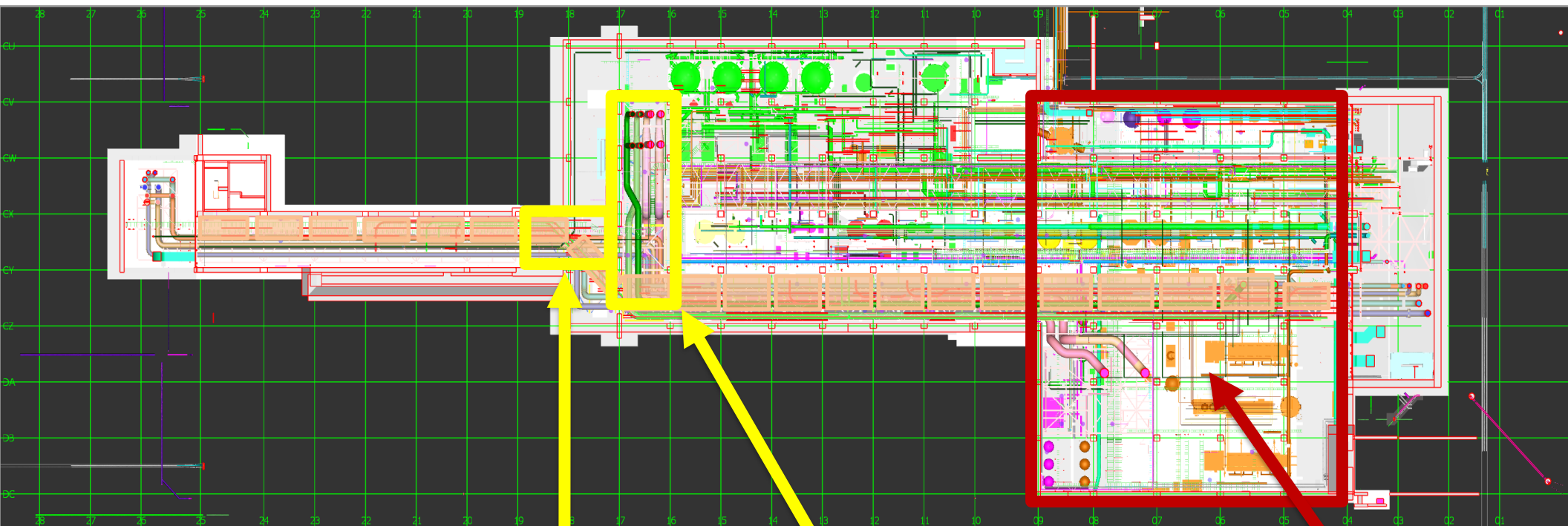
[illegible]



SUT 38.1 LEVEL



SUT 38.2 LEVEL



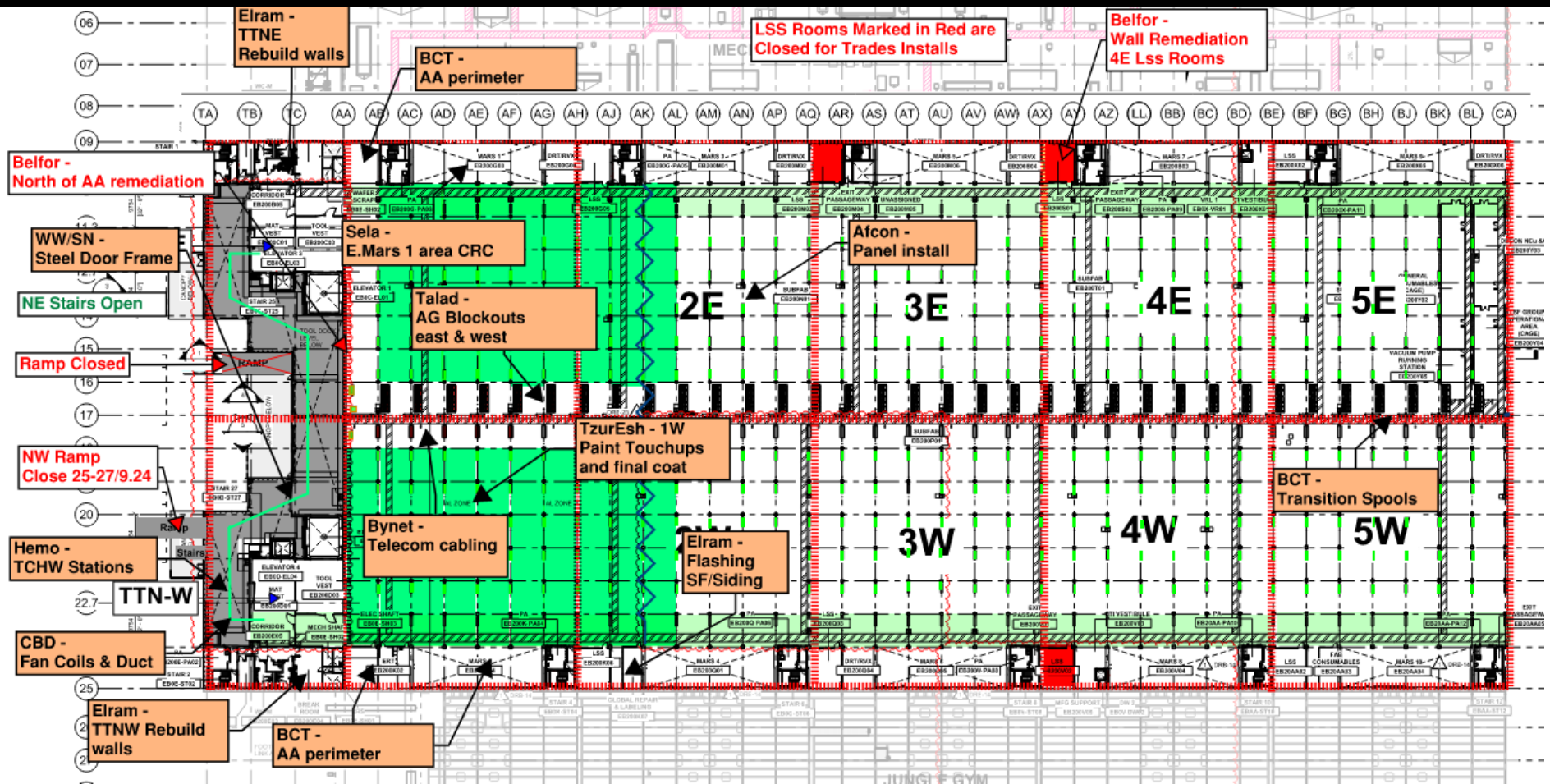
CRW
H&T
NEED PIPING

17-18 line
Bore Loading

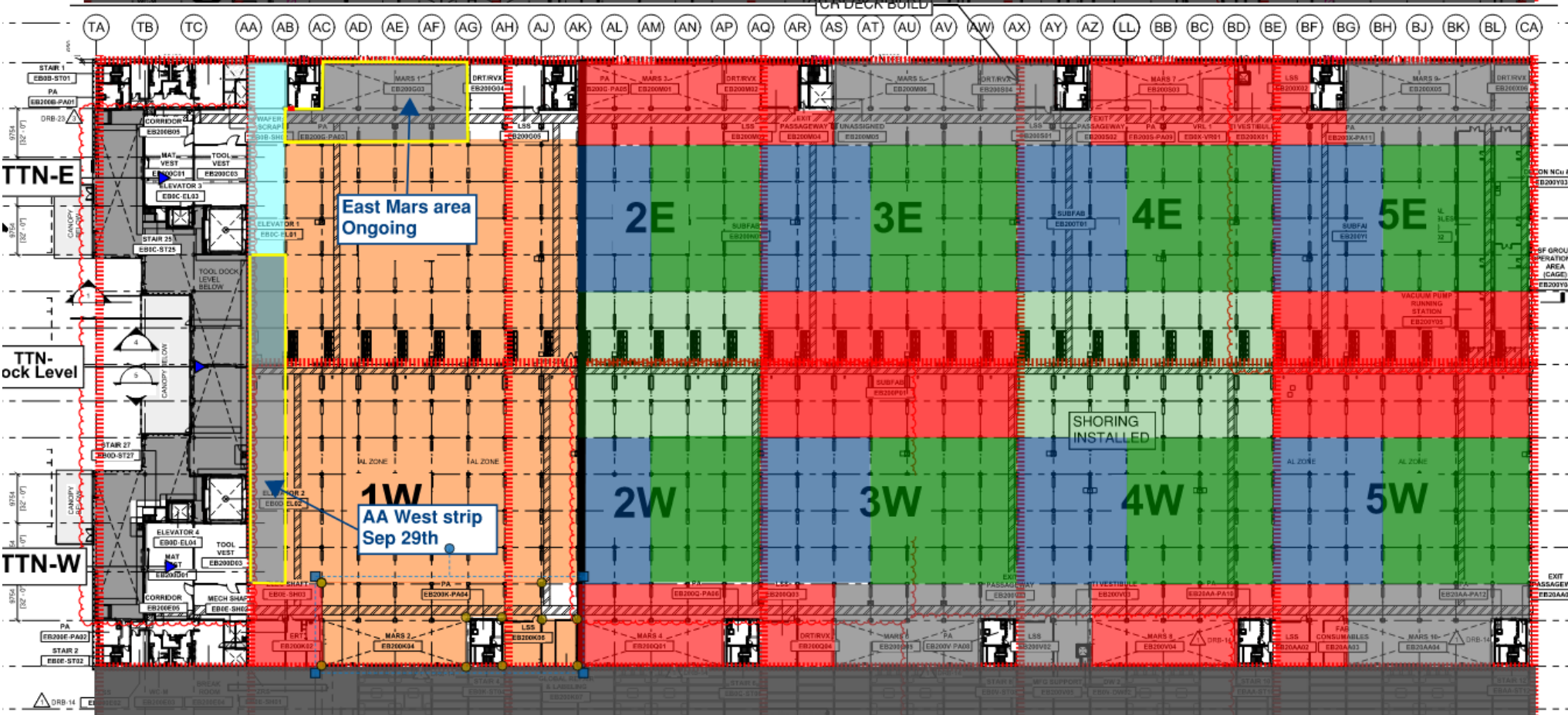
16-17 line
lvl2+3
bed lift: Need a
Date

Vesda
H&T
Ongoing

SUBFAB BUILDOUT MOD 1

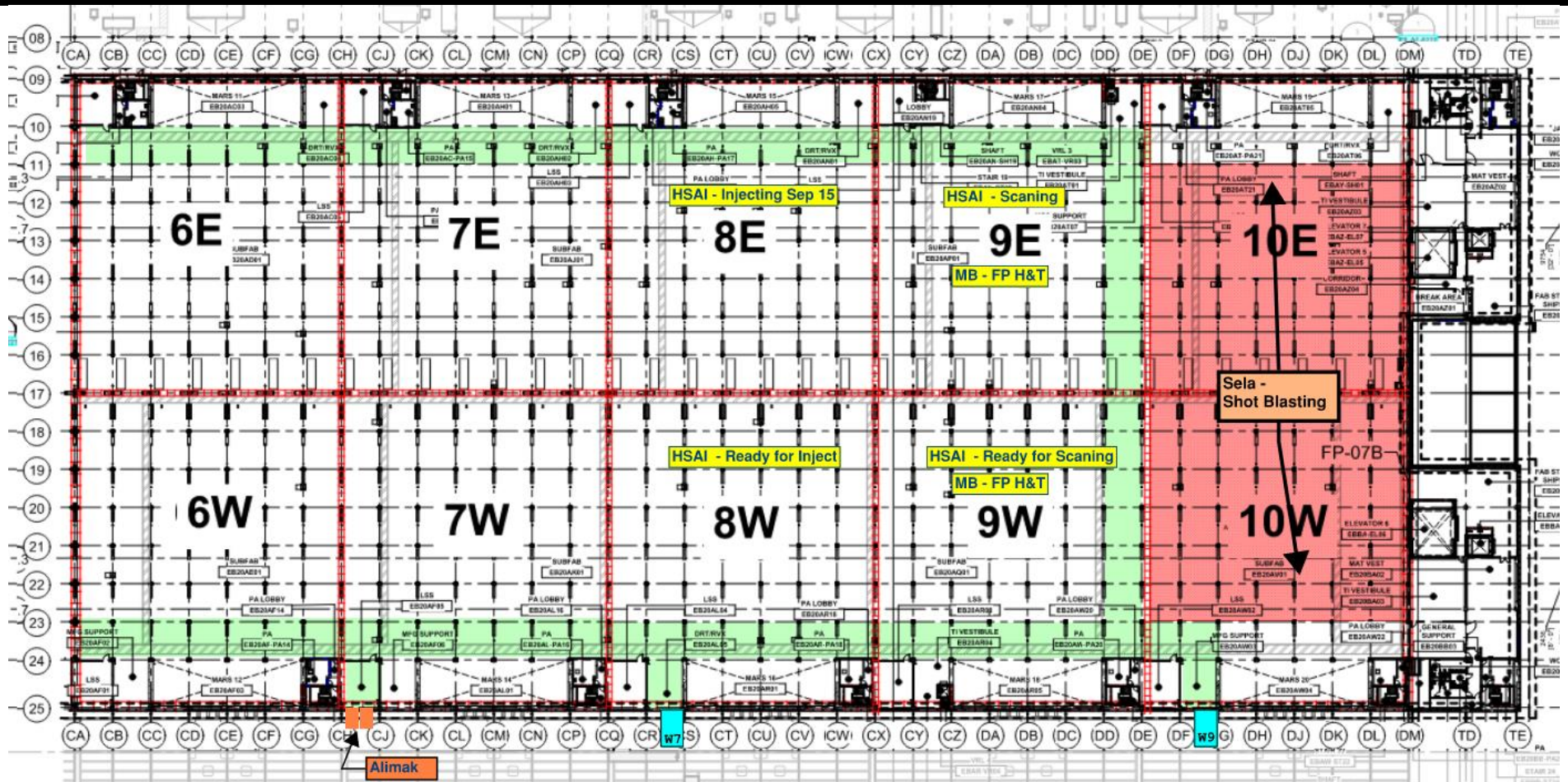


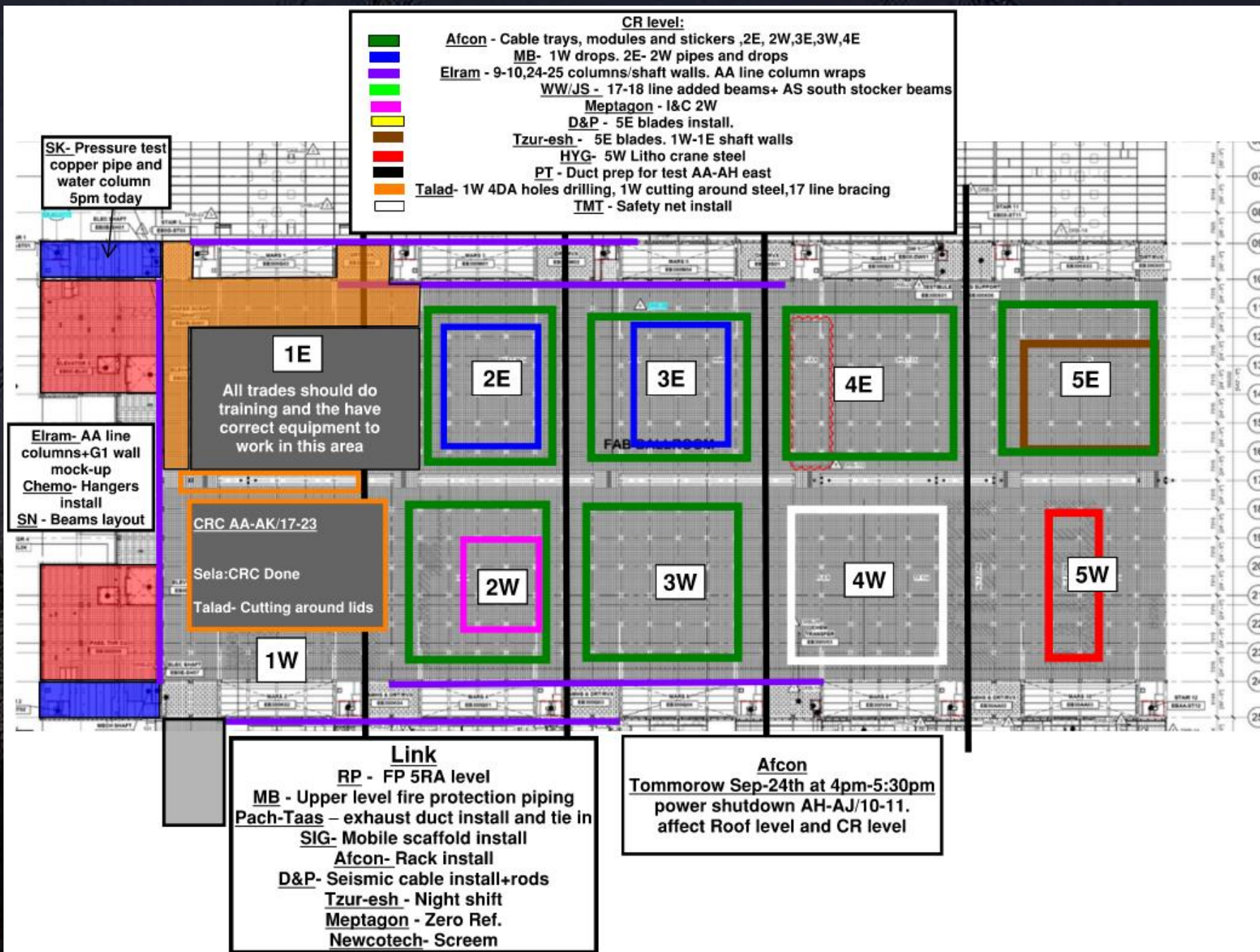
SUBFAB CRC TOPCOAT

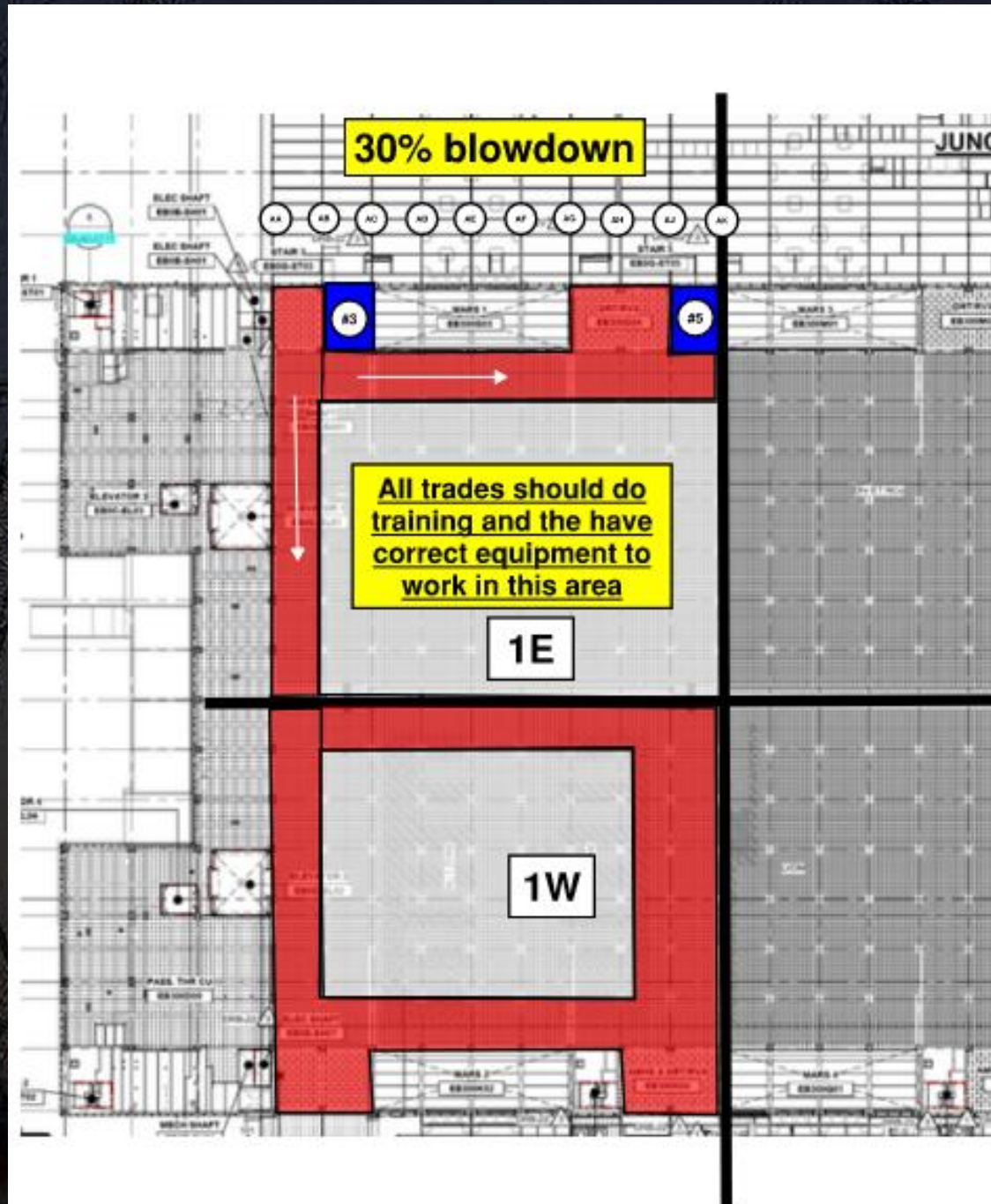


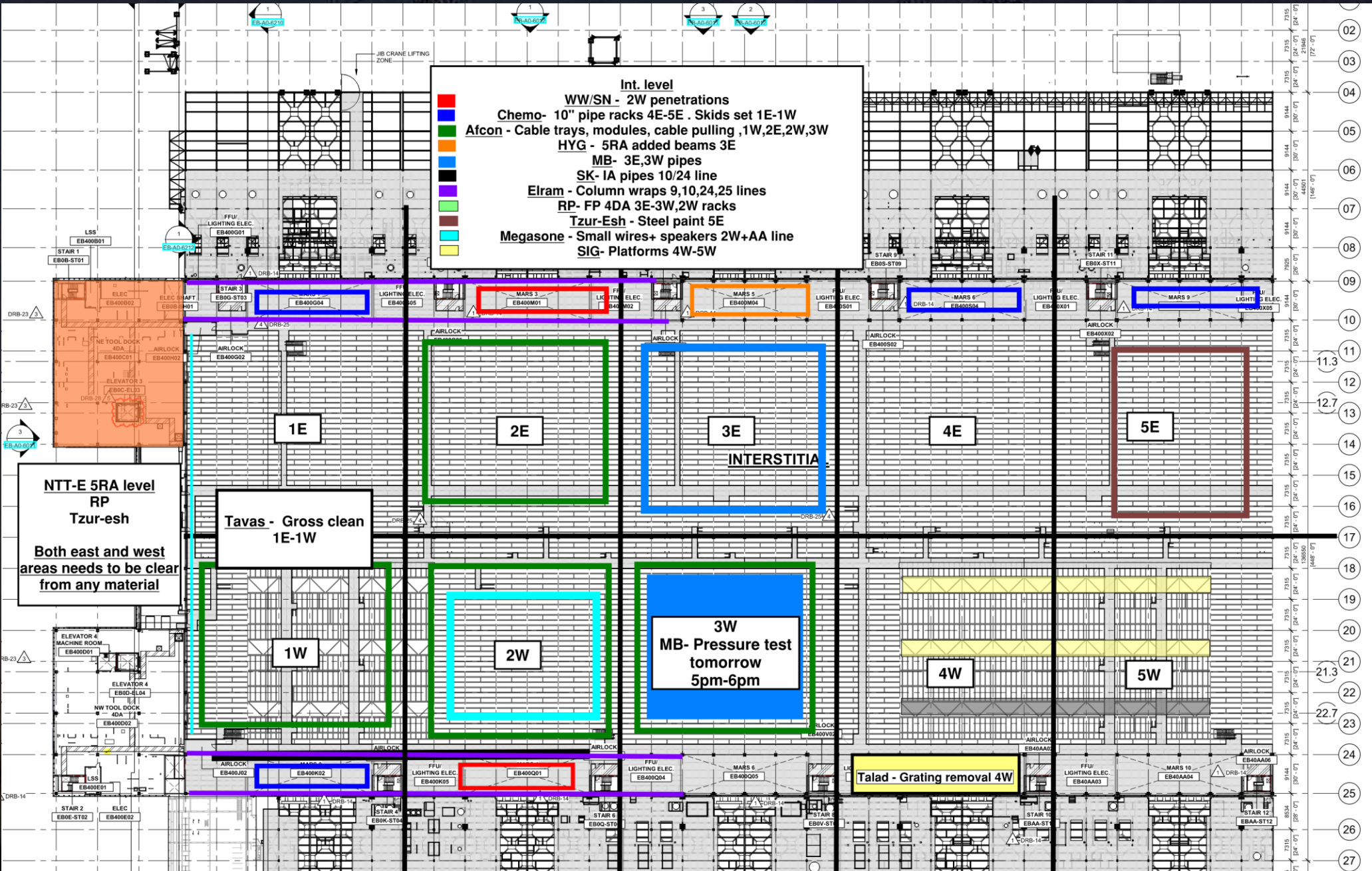
SUBFAB CRC TOPCOAT

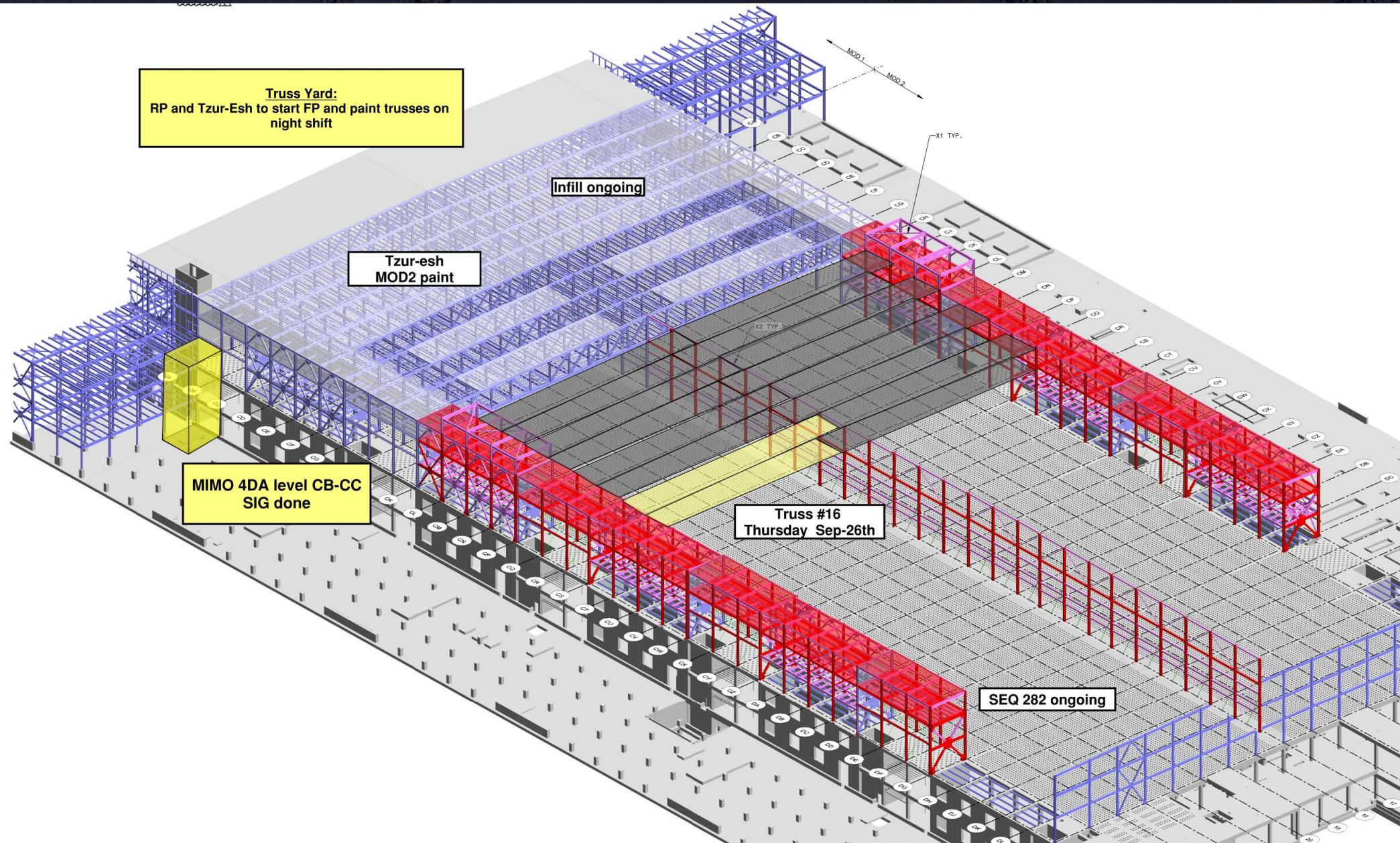














Clean Room Wall Of Shame

Elram



Megason



Elram



HYG stairs
Sep/22
Before 2 & 25 &
7.1
Sep/22

NETD-SW-1
STAIR 1

01E-SW
STAIR 3

02E-SW
STAIR 5

03E-SW
steel
STAIR 7.3

04E-SW
STAIR 9

05E-SW
STAIR 11

Electra -EL1 Sep/22
ASD - scaffold sep/22
Elram - Aug/29 AA
EL3 - steel ongoing

HSI-SOMD Sep/22
W.W EL2 - plates
Sep/23

NWTD-SW-1
STAIR 2

01W-SW
STAIR 4

02W-SW
STAIR 6

03W-SW
STAIR 8

04W-SW
STAIR 10

05W-SW
STAIR 12

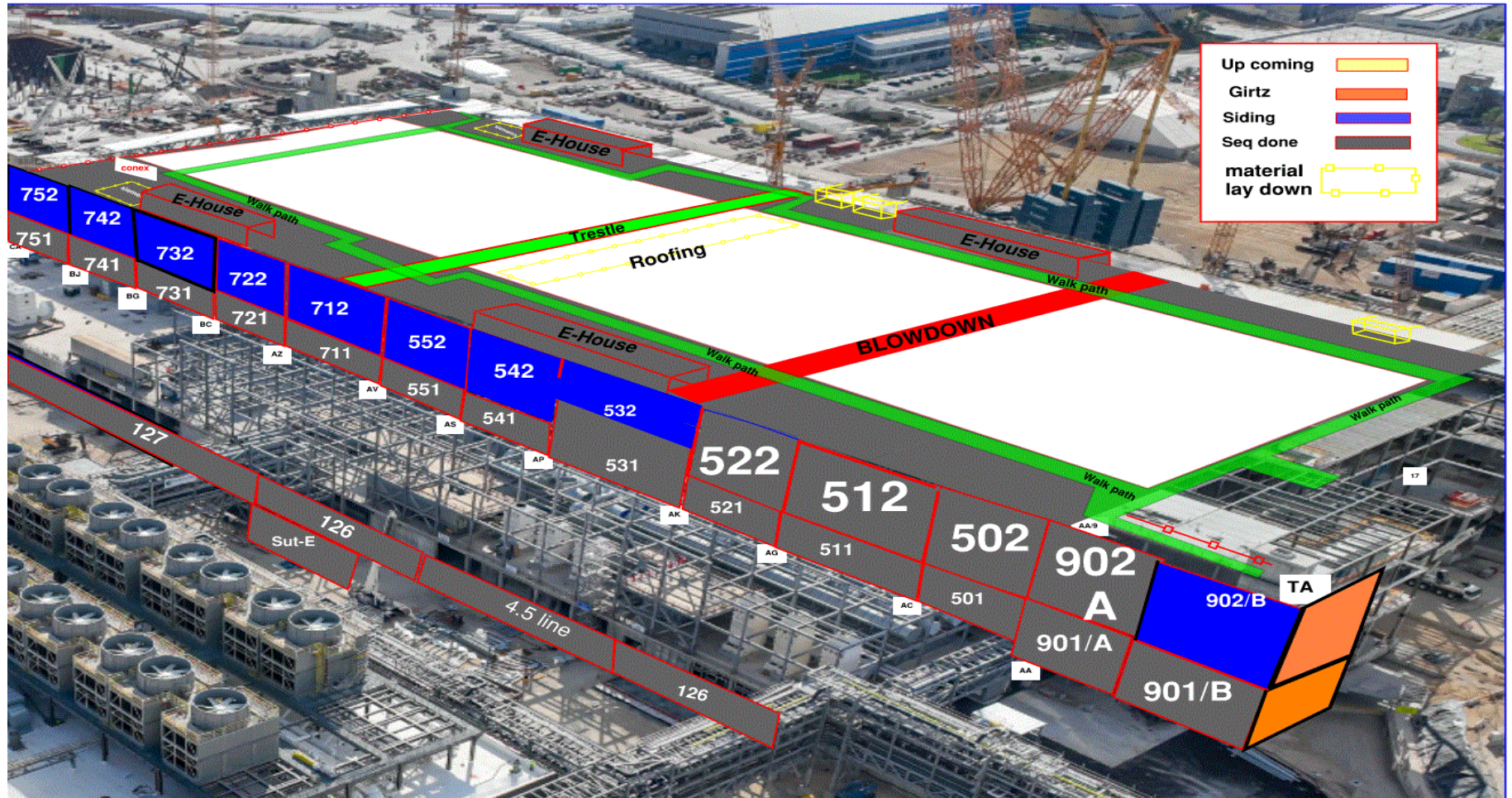
T.M chipping Sep/18
VRC Sep/25

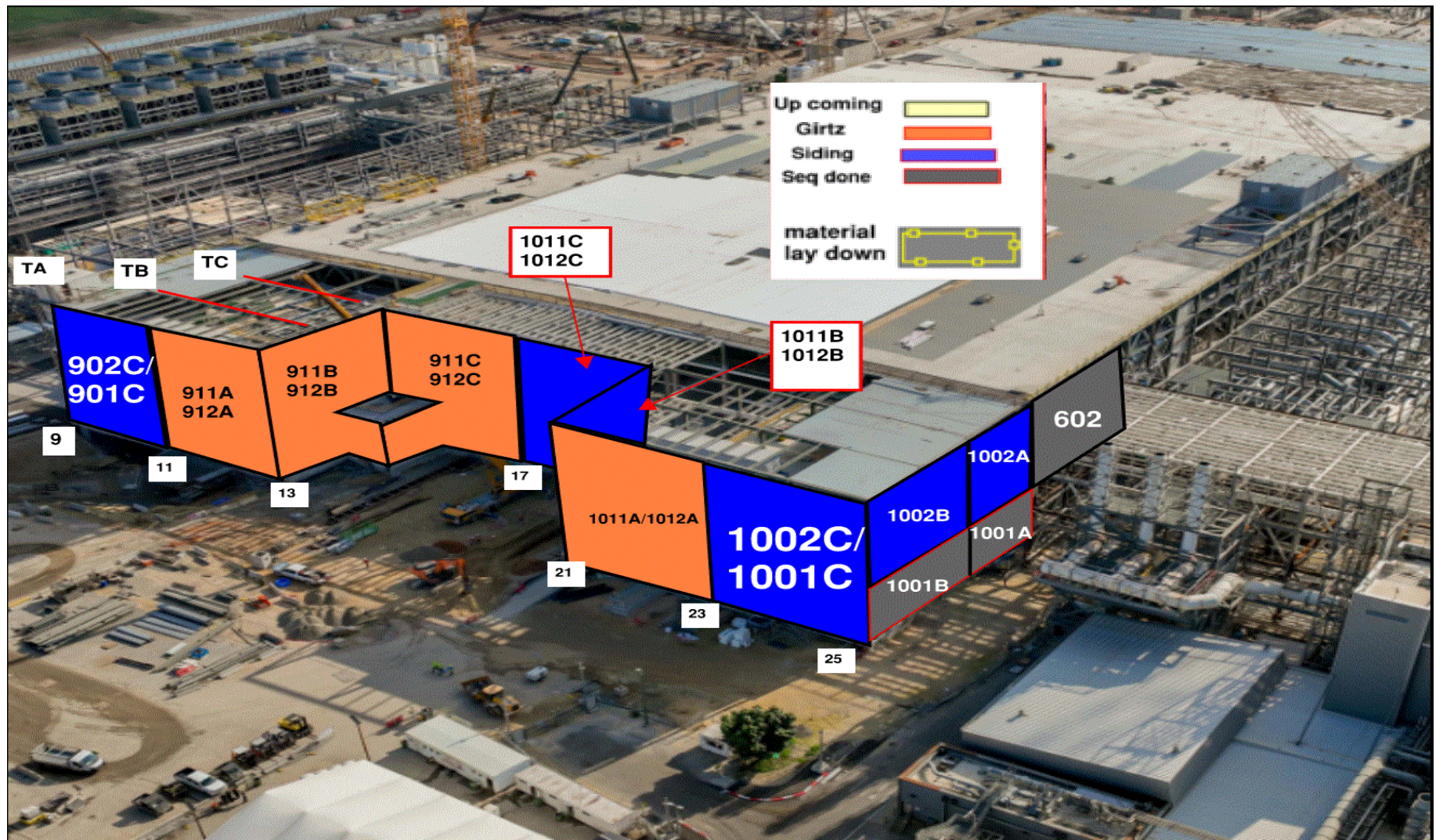
DW + VRL
Sep/29
ELRAM -
drywall

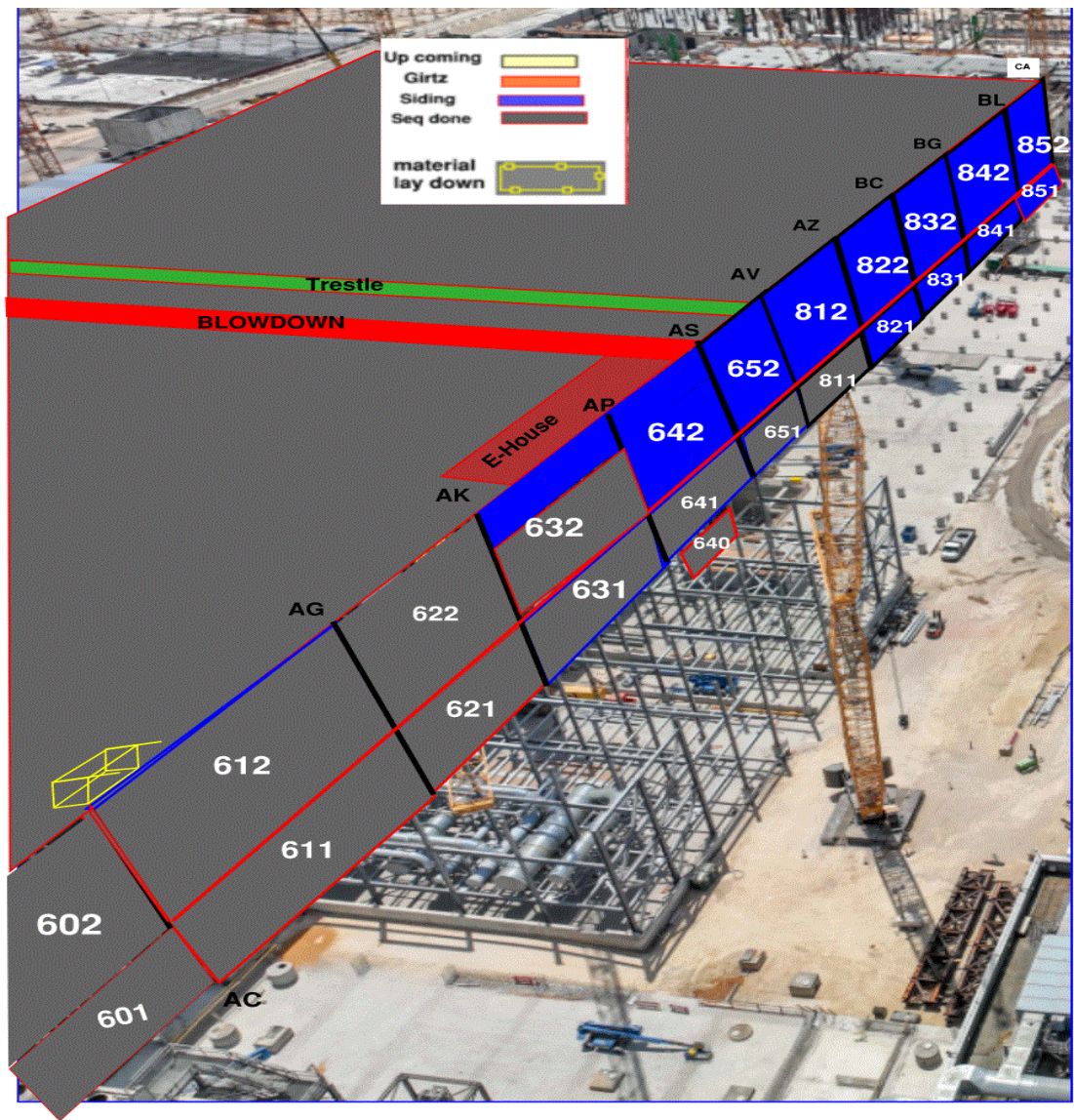
MEGASON LSS
AFCON - Telecom

DW + VRL
Sep/25
ELRAM -
drywall

HYG Handrails
#8 - Sep/24
3 WEEKS







Siding - East FAB - PSSS

DEMO

Siding - West FAB - JYG

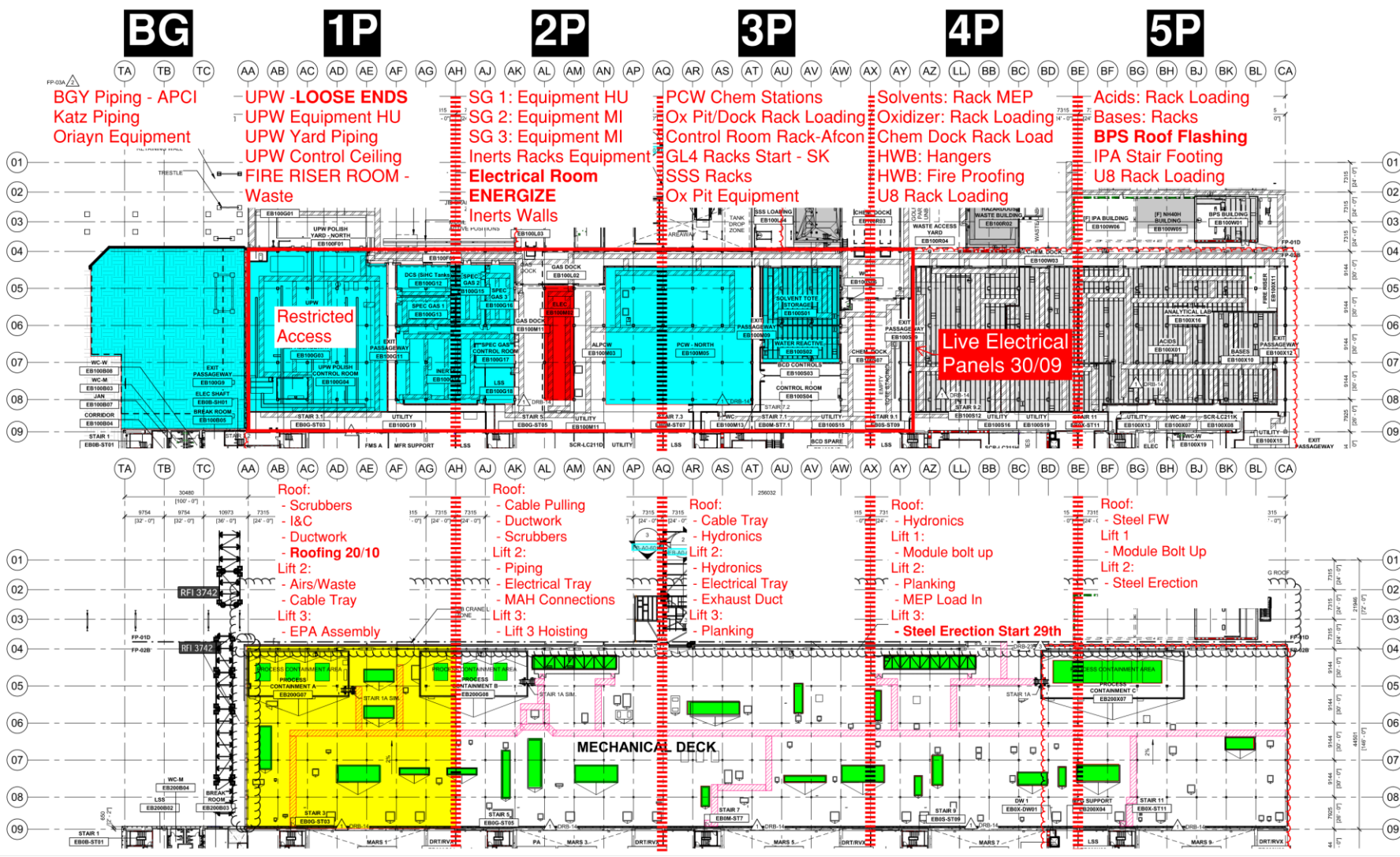
Link

1
2
3
4
5

PSSS.1

Utility Level 1YA

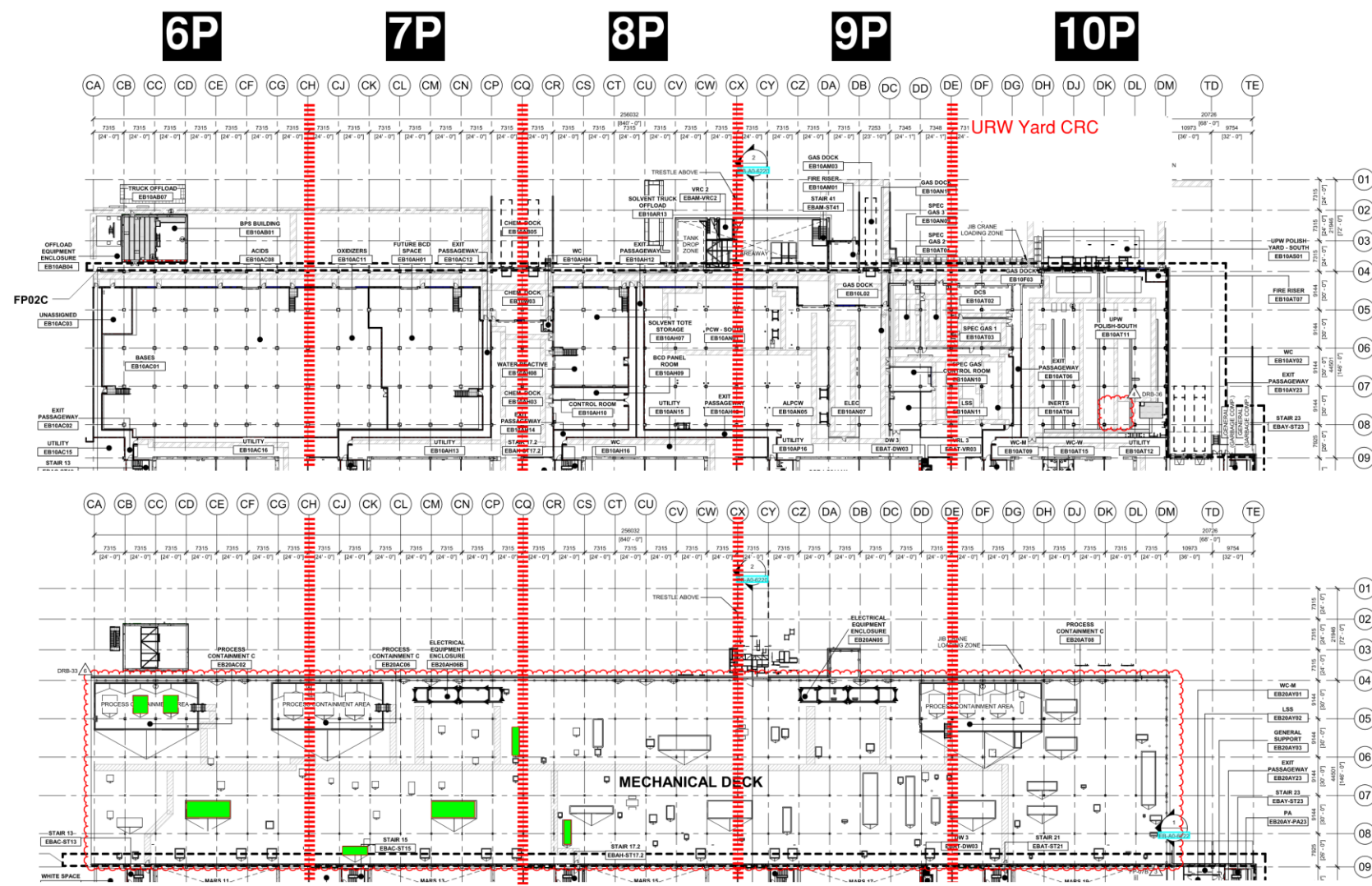
PSSS Roof 2SA



PSSS.2

Utility Level
1YA

PSSS Roof
2SA



PSSS

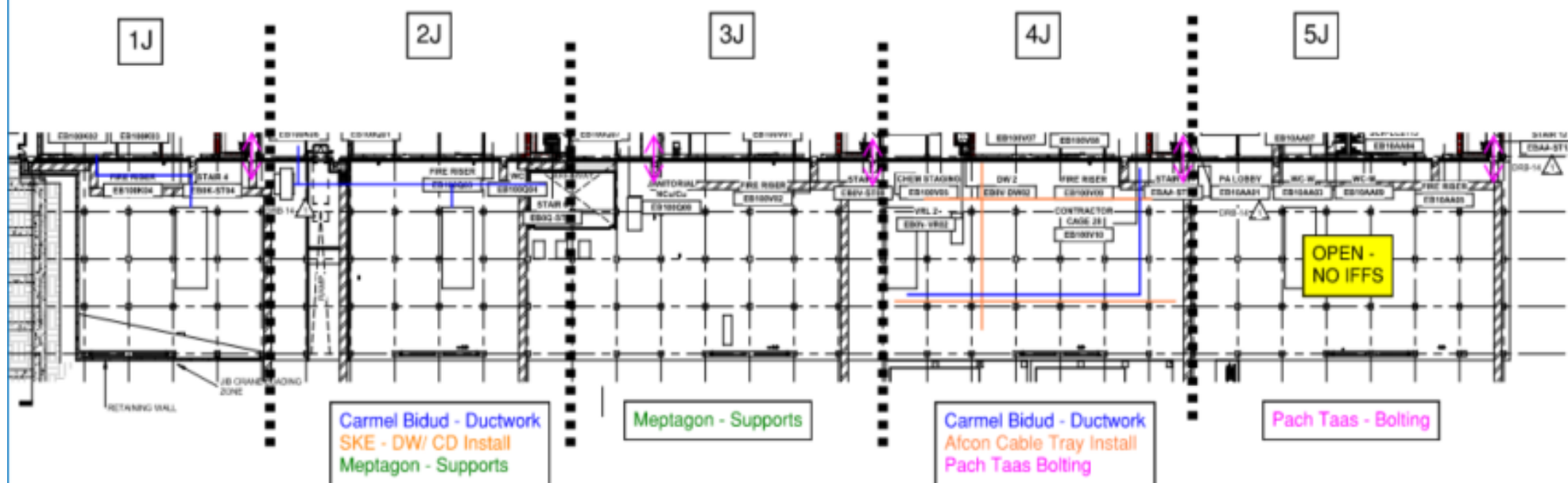
4P VFD Set

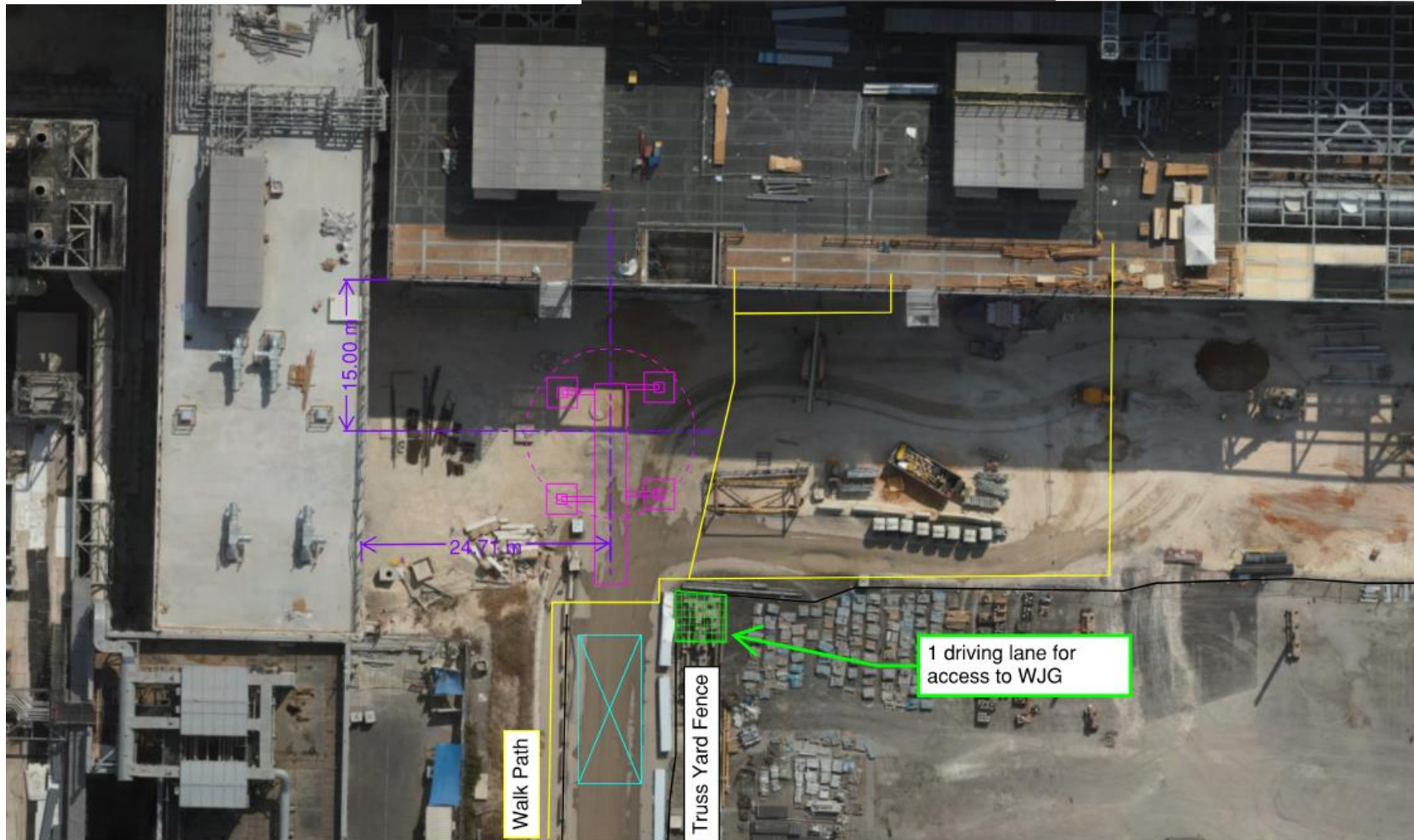
Hoist VFD – 24/09

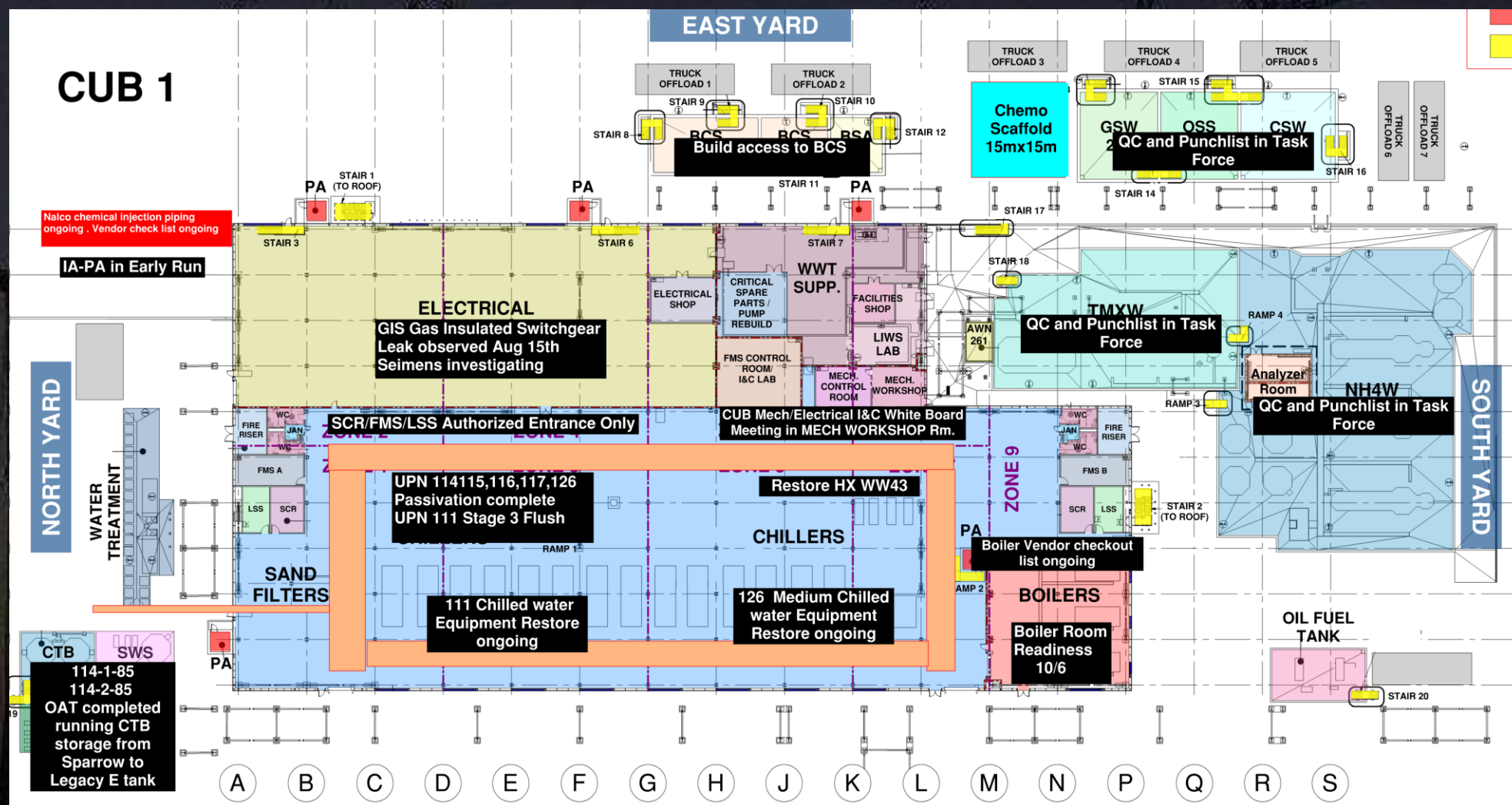


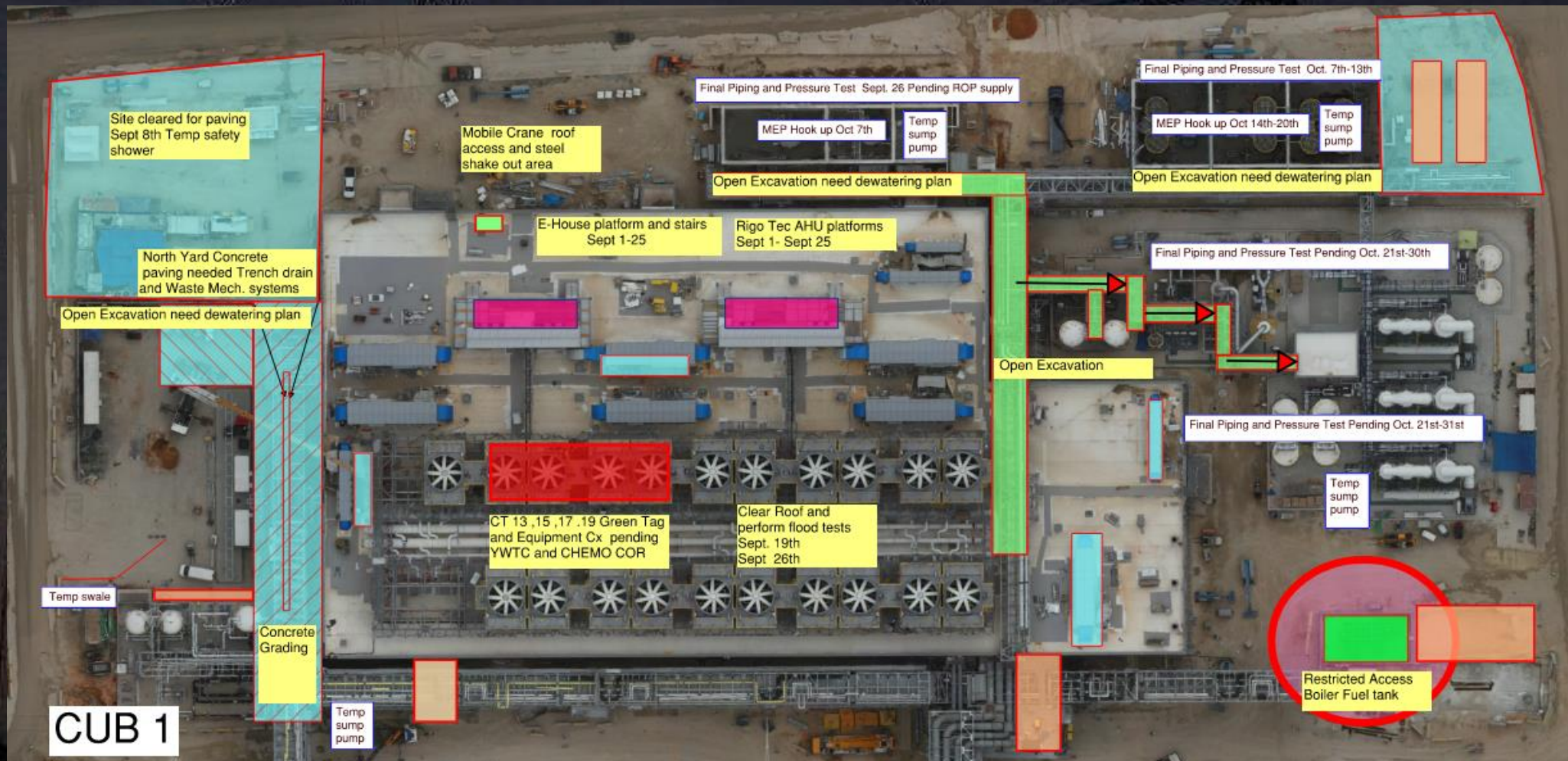


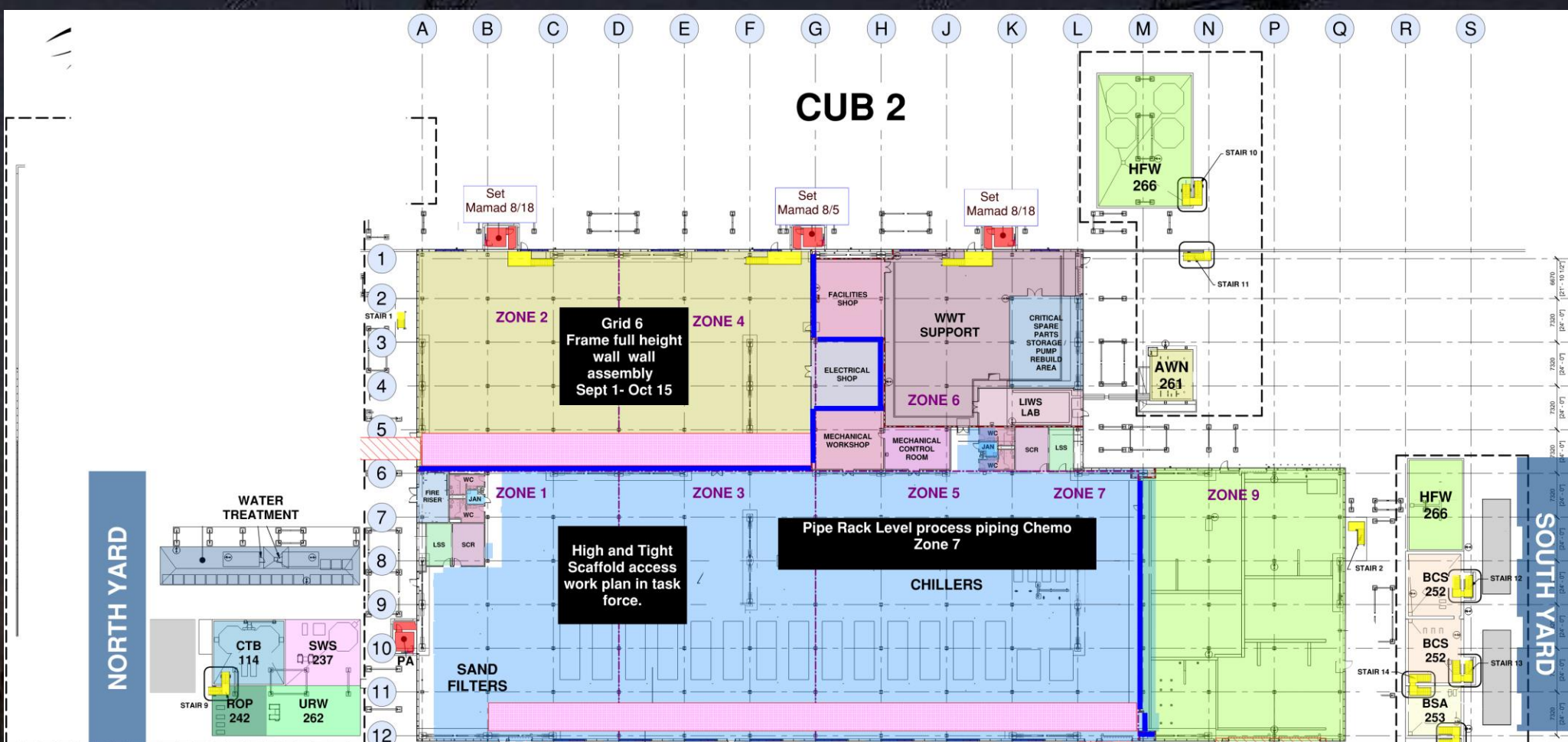


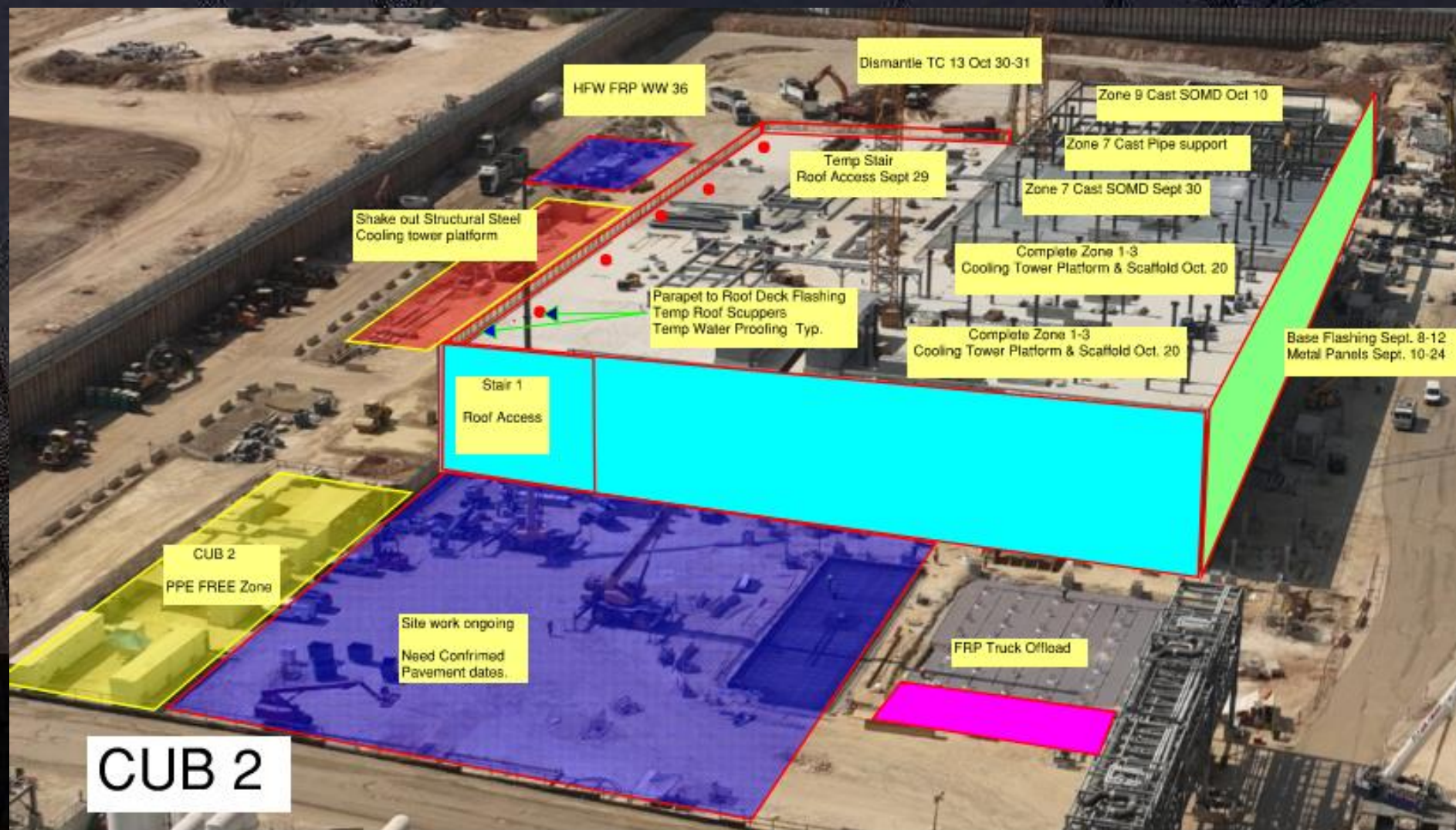


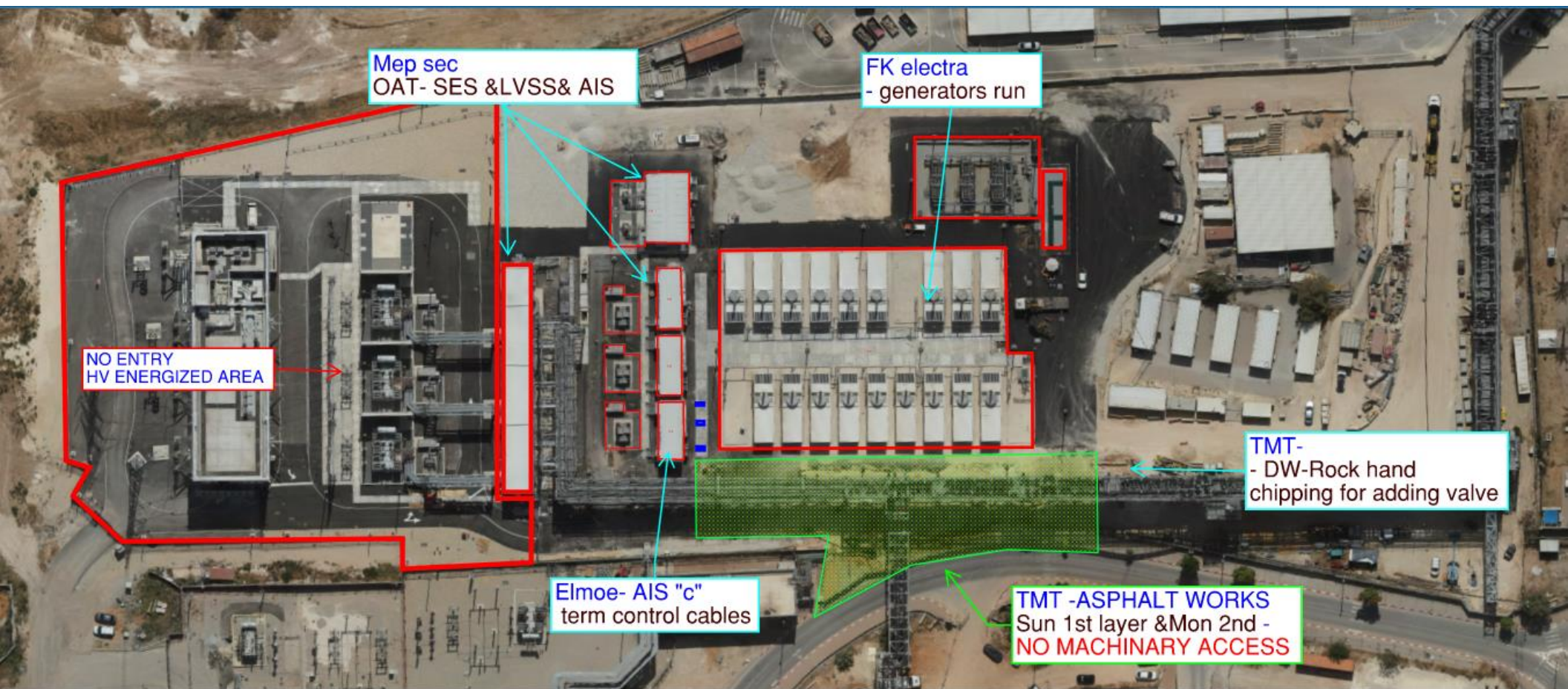












Mep sec
OAT- SES & LVSS& AIS

FK electra
- generators run

NO ENTRY
HV ENERGIZED AREA

TMT-
- DW-Rock hand
chipping for adding valve

Elmoe- AIS "c"
term control cables

TMT - ASPHALT WORKS
Sun 1st layer & Mon 2nd -
NO MACHINERY ACCESS





HOFFMAN CONSTRUCTION COMPANY

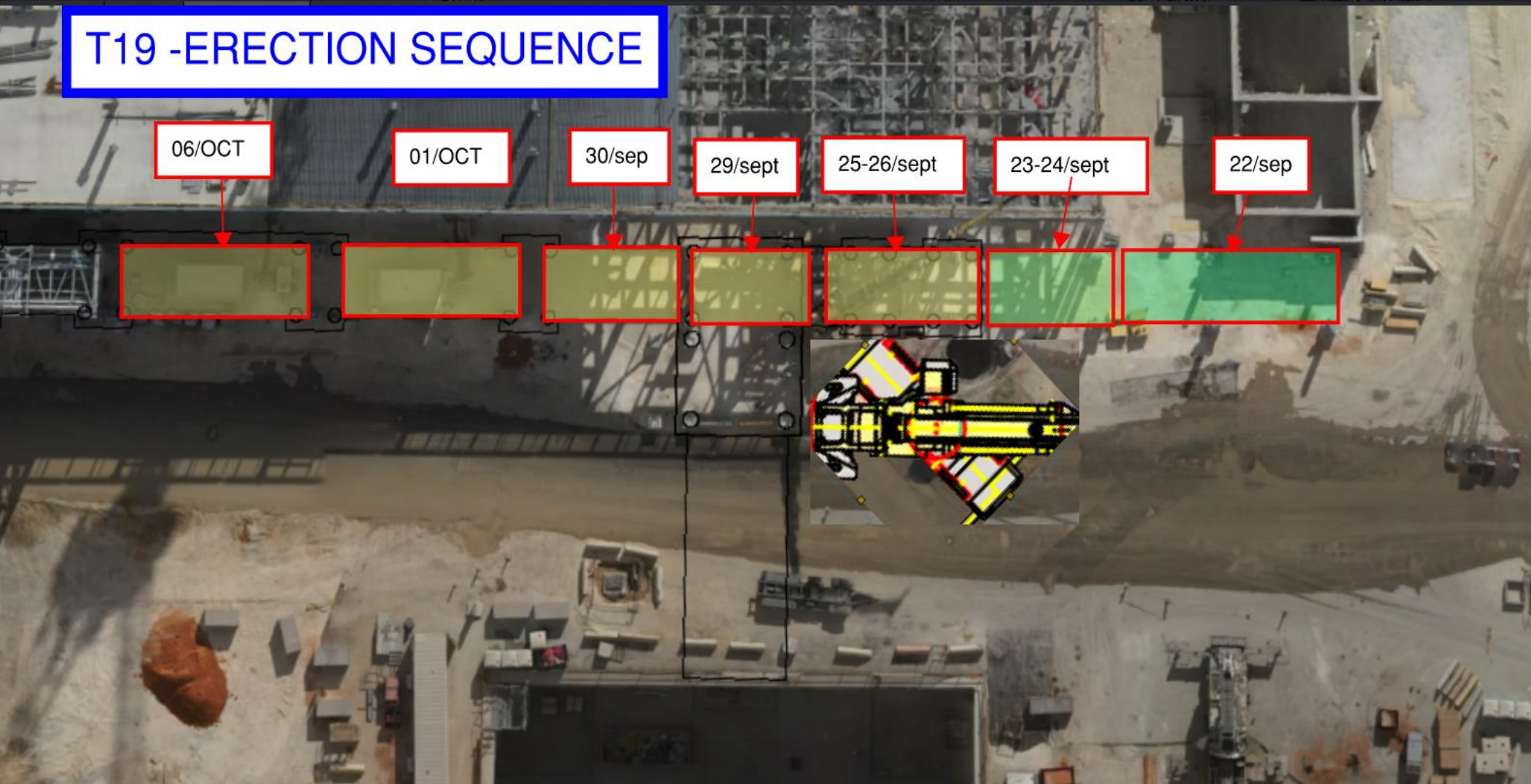


HOFFMAN
Sparrow  

NO PARKING OR MATERIAL STORAGE

BSGS

T19 -ERECTION SEQUENCE



From main kiosk

Site temporary power

Legend :

— 22KV Line

— 400V Line

109 - Kiosk

● -Lift Station

Fab 38.2

Upcoming shutdown
Fab(all floors); JG; PSSS
29.Sep 00:00 to 05:00
W1;W2;W3
E1;E2;E3
Sunday morning

Cub 2

Cub 1

TC-10
Done

TC-8
Done

TC-6
Done

TC-4
Done

630A
SW
Done

630A
NW
Done

630A
SE
Done

630A
NE
Done

TC-9
On Gen
power
10.09

TC-7
On Gen power
Done

TC-5
Done

TC-3
Done

TC-13
Done

TC-12
Done

To 115

From main

117

105

106

107

108

109

111

112

113

114

115

116

Daily Coordination Meeting

Site Logistics

Underground Utilities

ALL UNDERGROUND UTILITIES ARE LIVE!

- Temp water
- Temp power (22kv)
- Storm
- Sewer
- Domestic Water
- Fire Protection Water (Intel fire pumps and alarms!)

Systems are connected to buildings and cannot be damaged or used without HCC approval.

Daily Coordination Meeting

Site Logistics

North





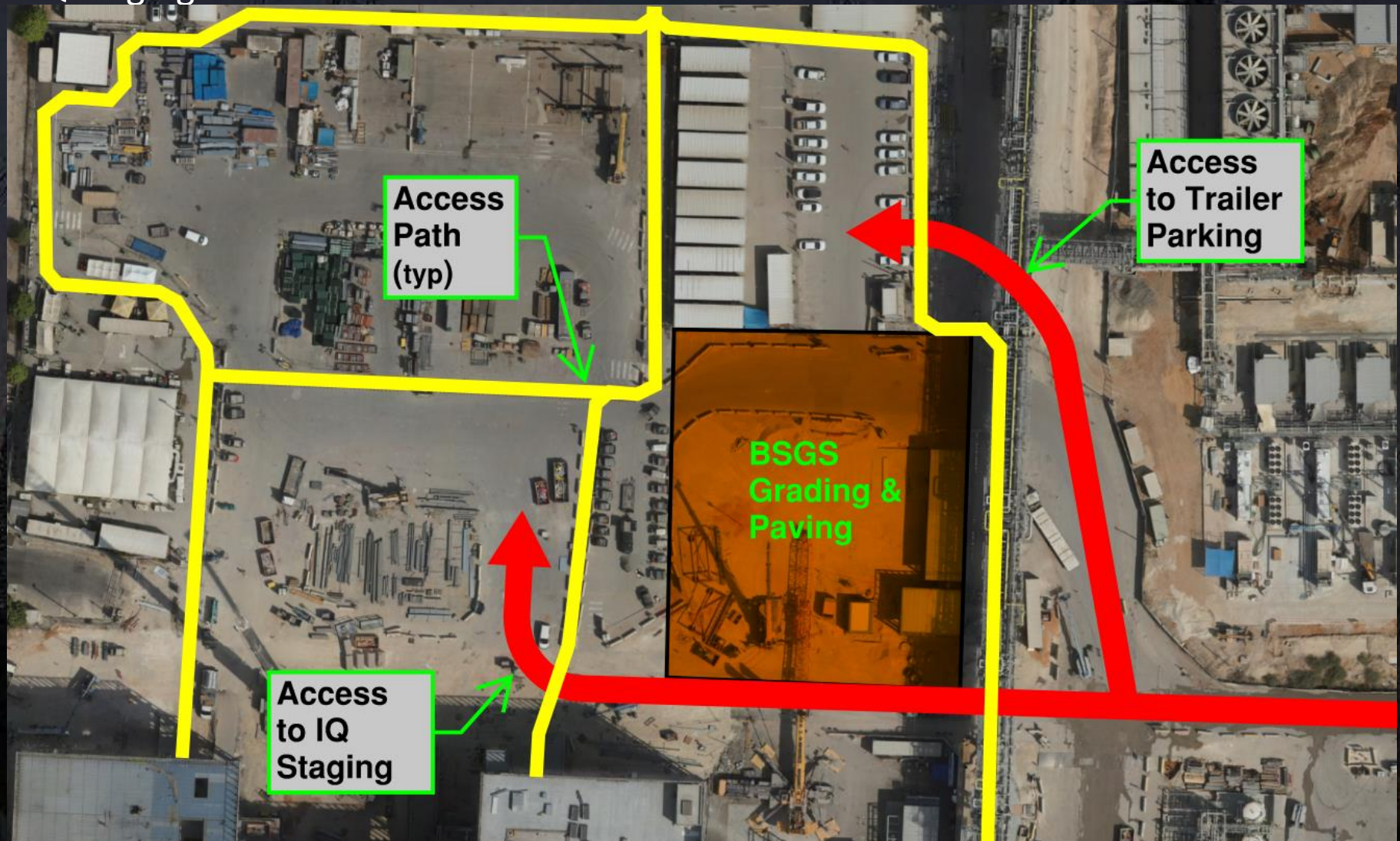
HOFFMAN CONSTRUCTION COMPANY



Daily Coordination Meeting

Site Logistics

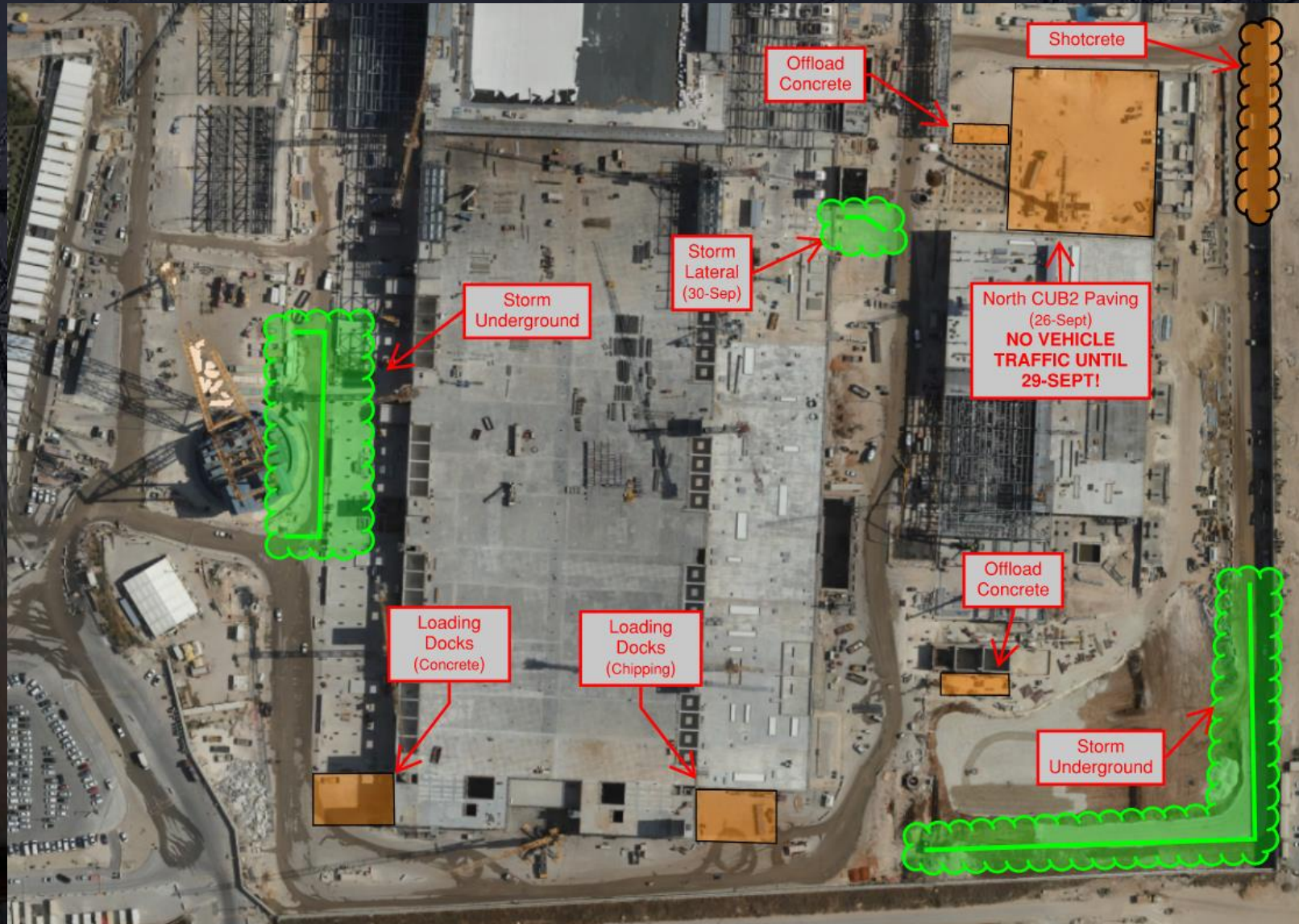
North IQ Staging Access



Daily Coordination Meeting

Site Logistics

South



Barricades

- We are not seeing the improvement with barricades needed as work areas become more congested and more and more activities are taking place on site.
- Please talk with all of your crews about the following:
- All barricades must be completely enclosed, have a gate, and have signage defining the hazard and the contact person.
- Red barricades are needed for life threatening hazards.
- Barricades are not to stay in place after the hazard is no longer present, meaning at the end of the shift if we are leaving a barricade up because we are also leaving a hazard, we need to communicate with the HCC superintendent for that area.
- Barricades must be maintained, this sometimes requires fixing them throughout the shift.
- Please, make this a priority with your team. Barricades are vital communication tools on our site. Currently, we aren't communicating well.

Daily Coordination Meeting



14:00 Sign In