

# Daily Coordination Meeting



14:00 Sign In

# Daily Coordination Meeting

## General Topics:

- Power in PSSS going to roof e-houses
- Avi incident - contributing factors
  - Crane was operating in bypass mode
  - § Complacency with operating in this situation
  - Crane wasn't set up in location identified on picking plan



Truck Off-Loads #15  
and #16  
7:00 am

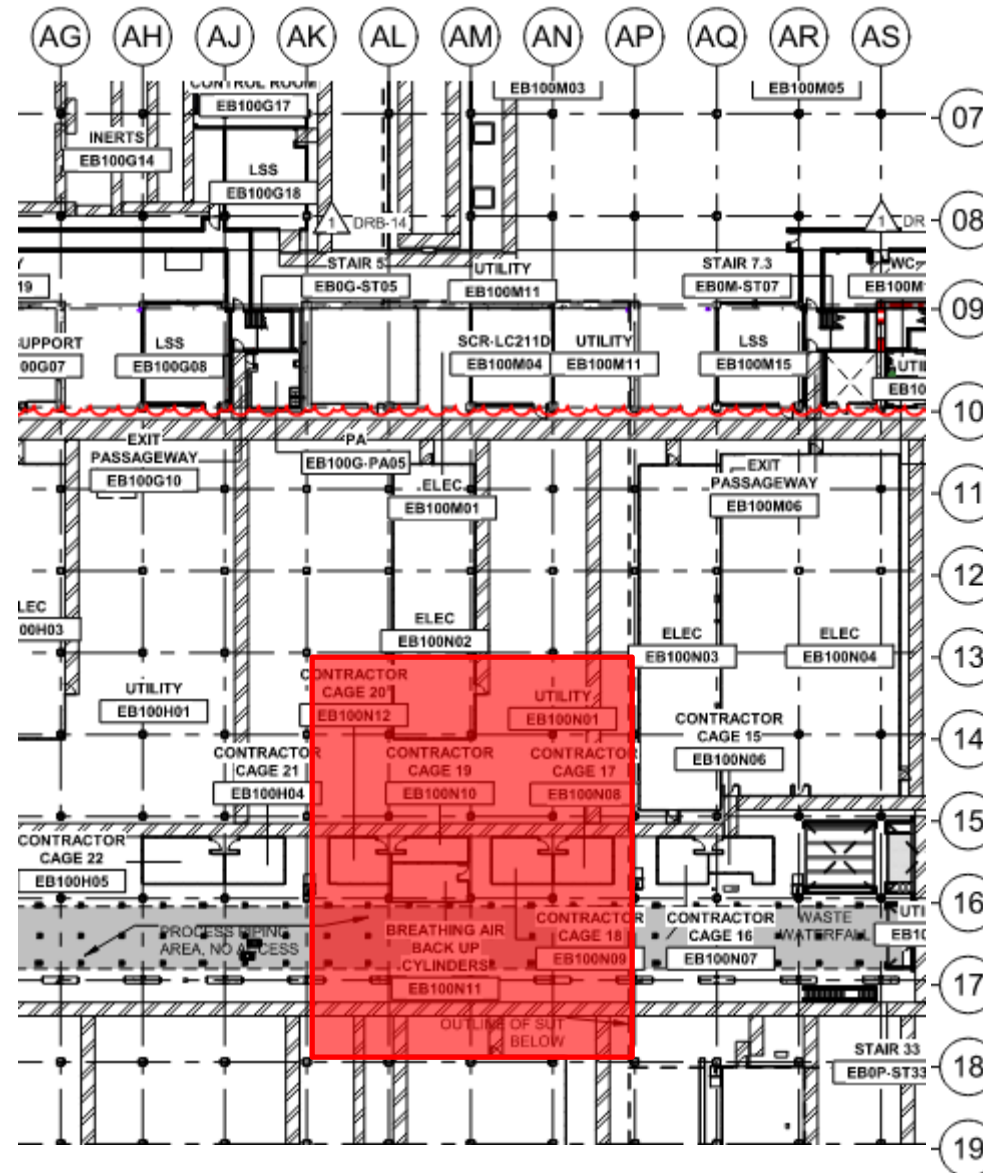
Truck Off-Loads  
#15 and #16  
7:00 am



UTILITY LEVEL P.Test

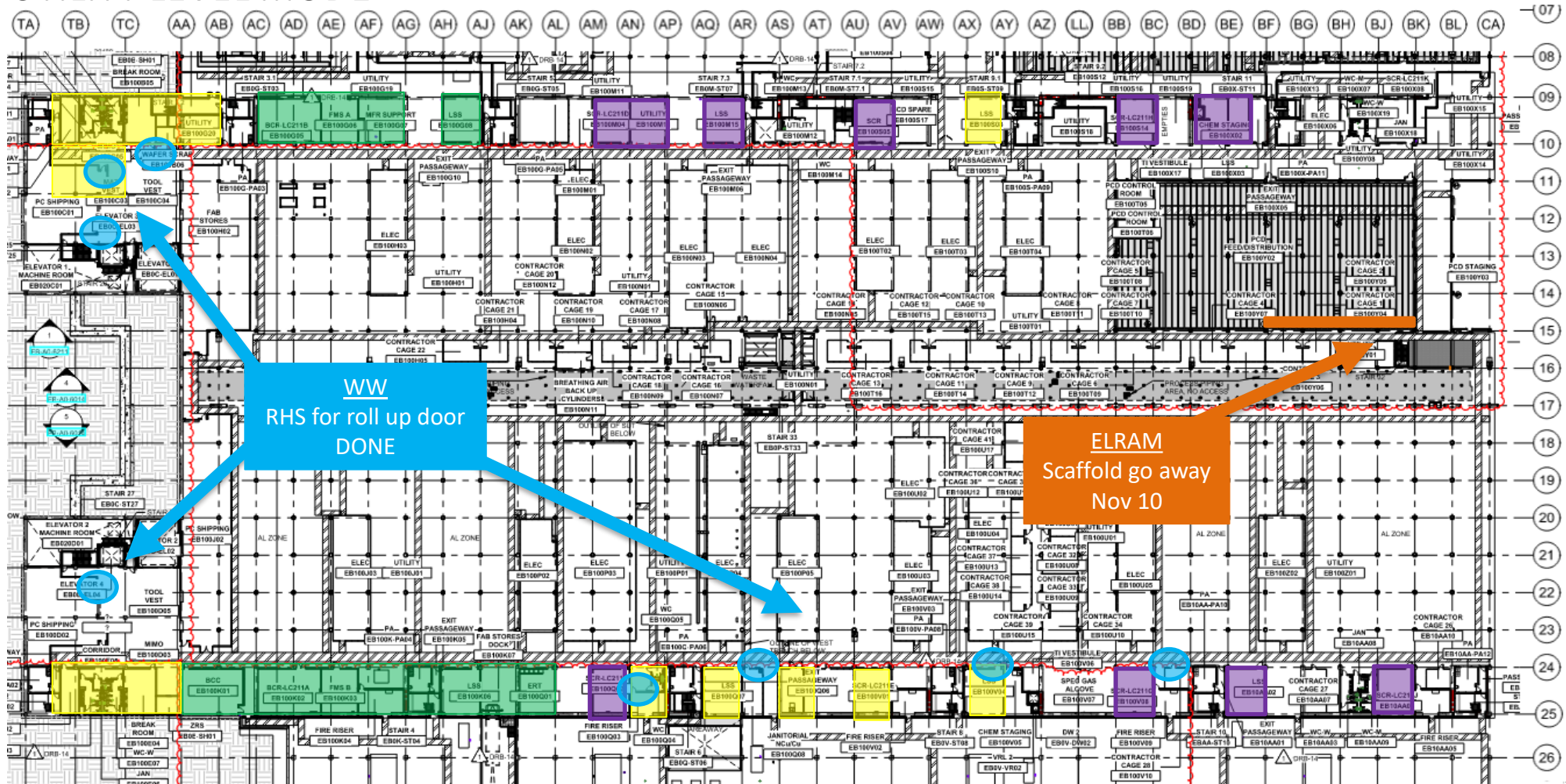
LESICO

Press. Int Test  
OFA 165psi-  
retest  
11/11  
From 19:00  
to 23:00





## UTILITY LEVEL MOD1

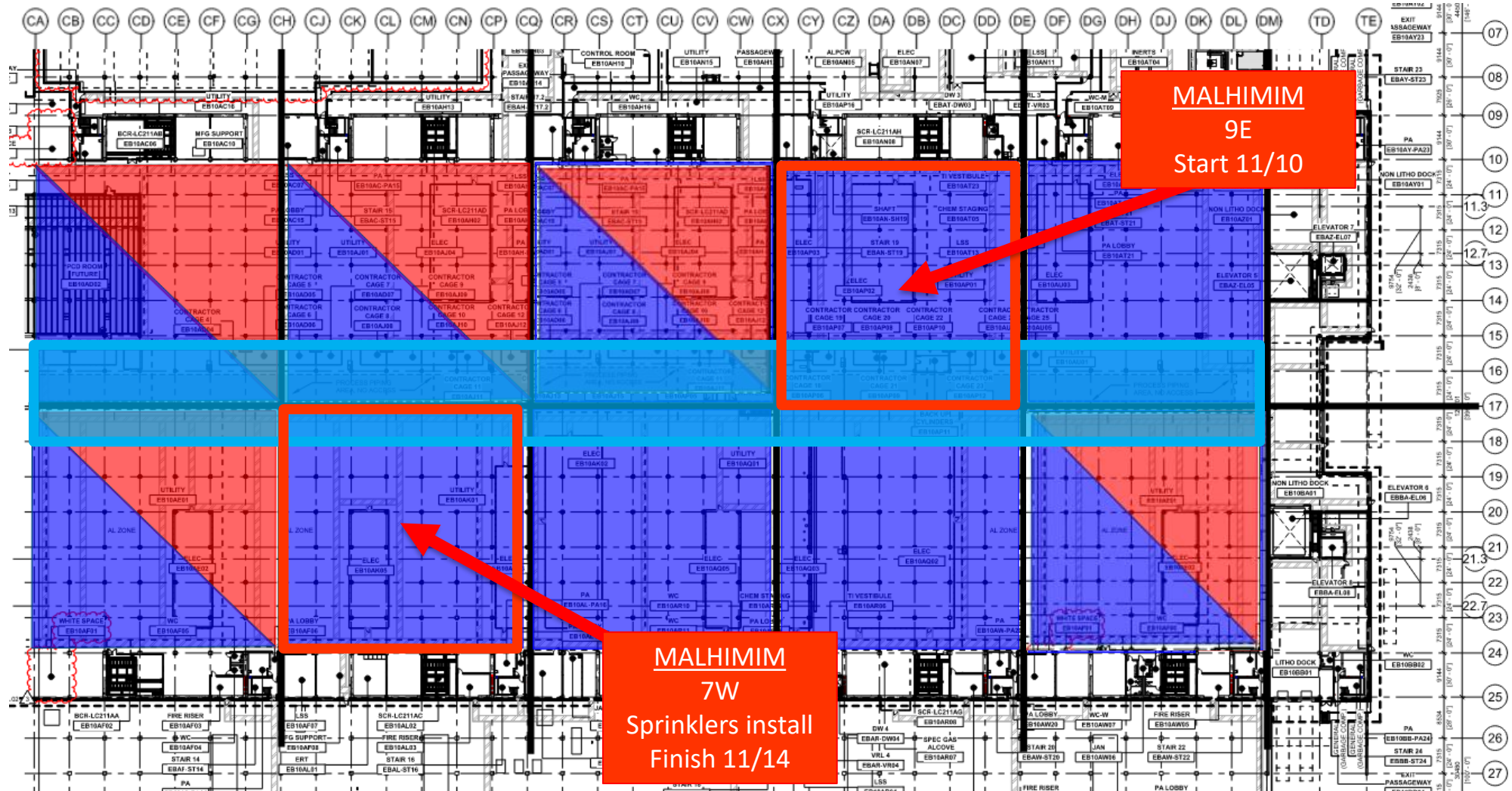


**BELFOR**  
Mold remediation

**ELRAM**  
Drywall install

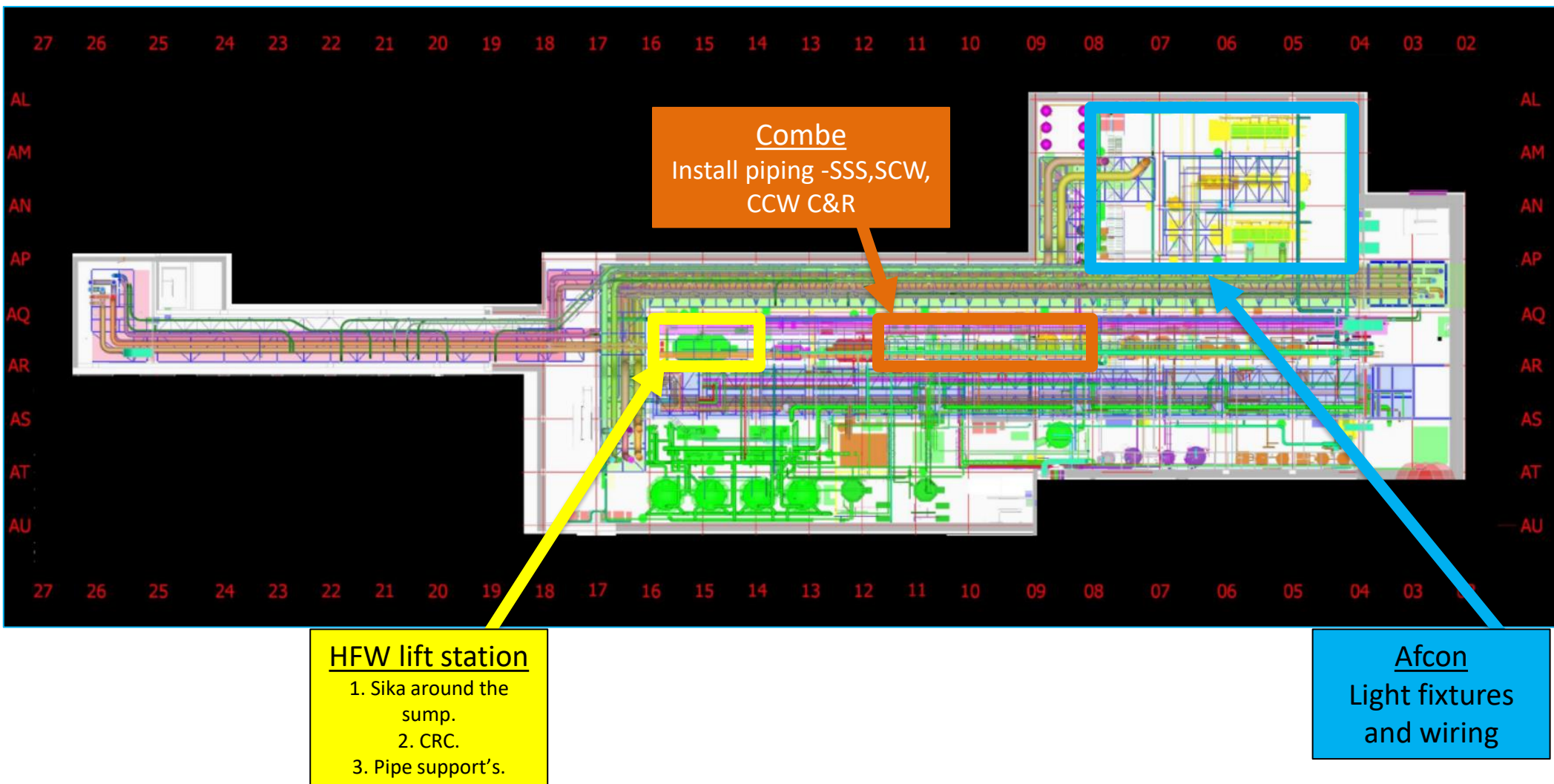
**MEP+Electrical**  
Ready for re-install

# UTILITY LEVEL MOD2

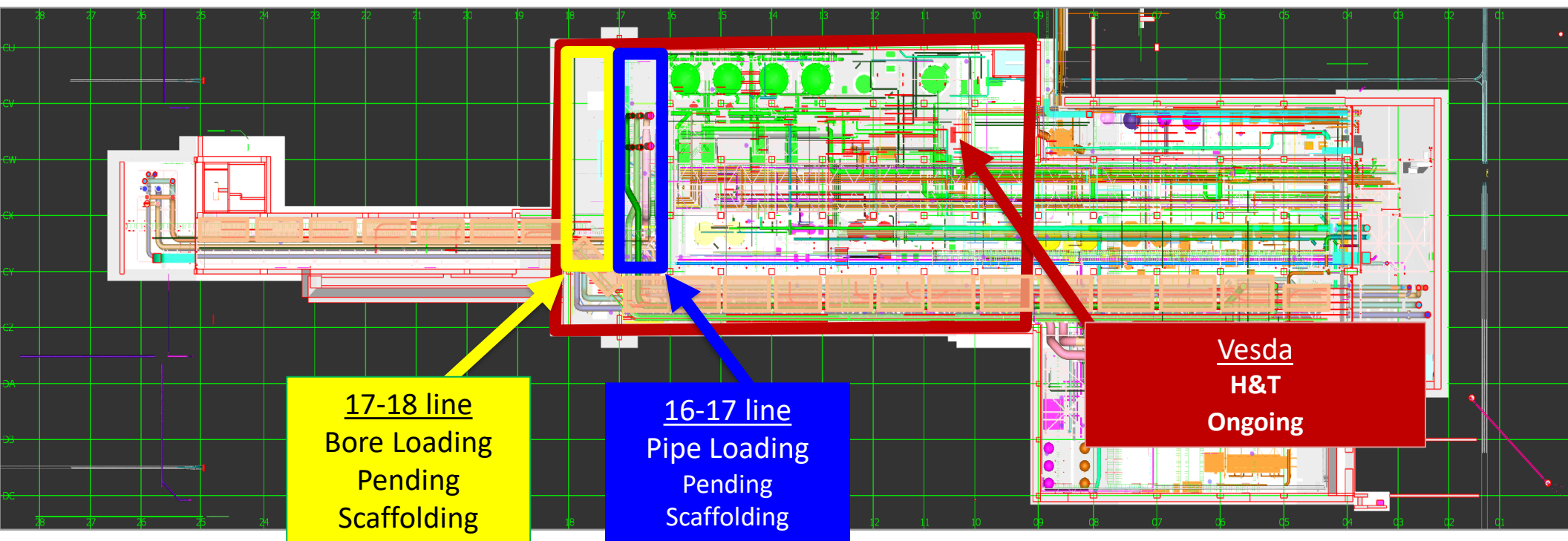




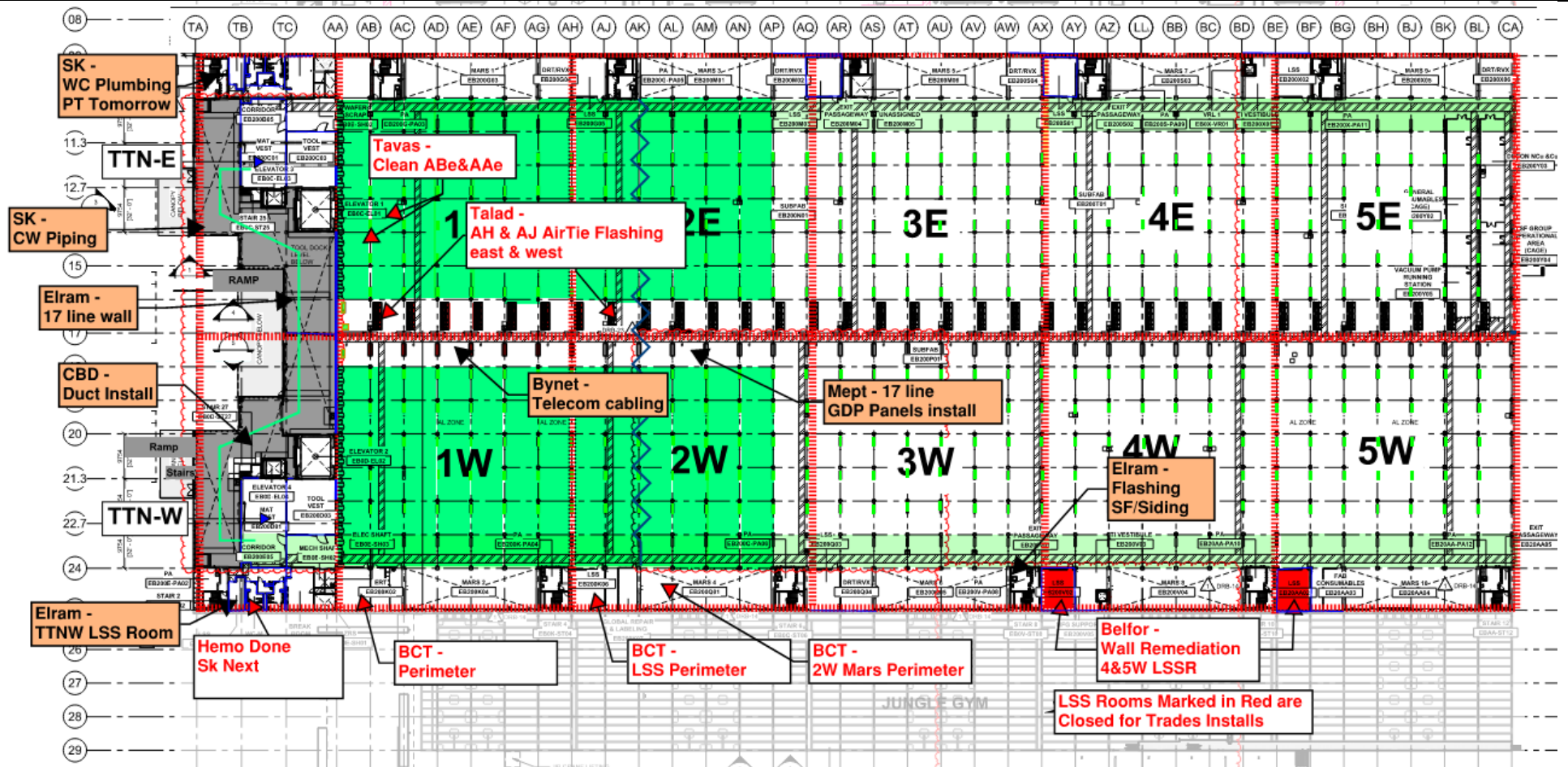
## SUT 38.1 LEVEL



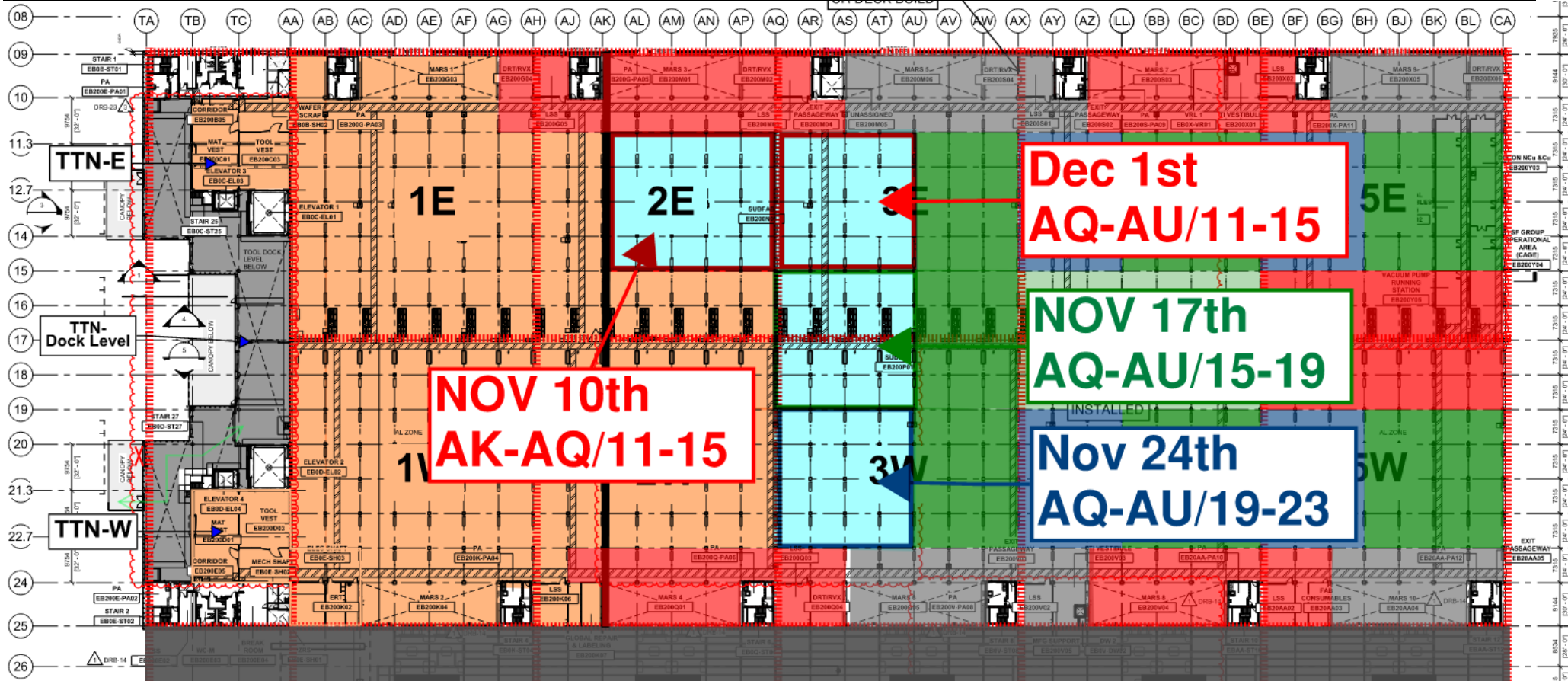
## SUT 38.2 LEVEL



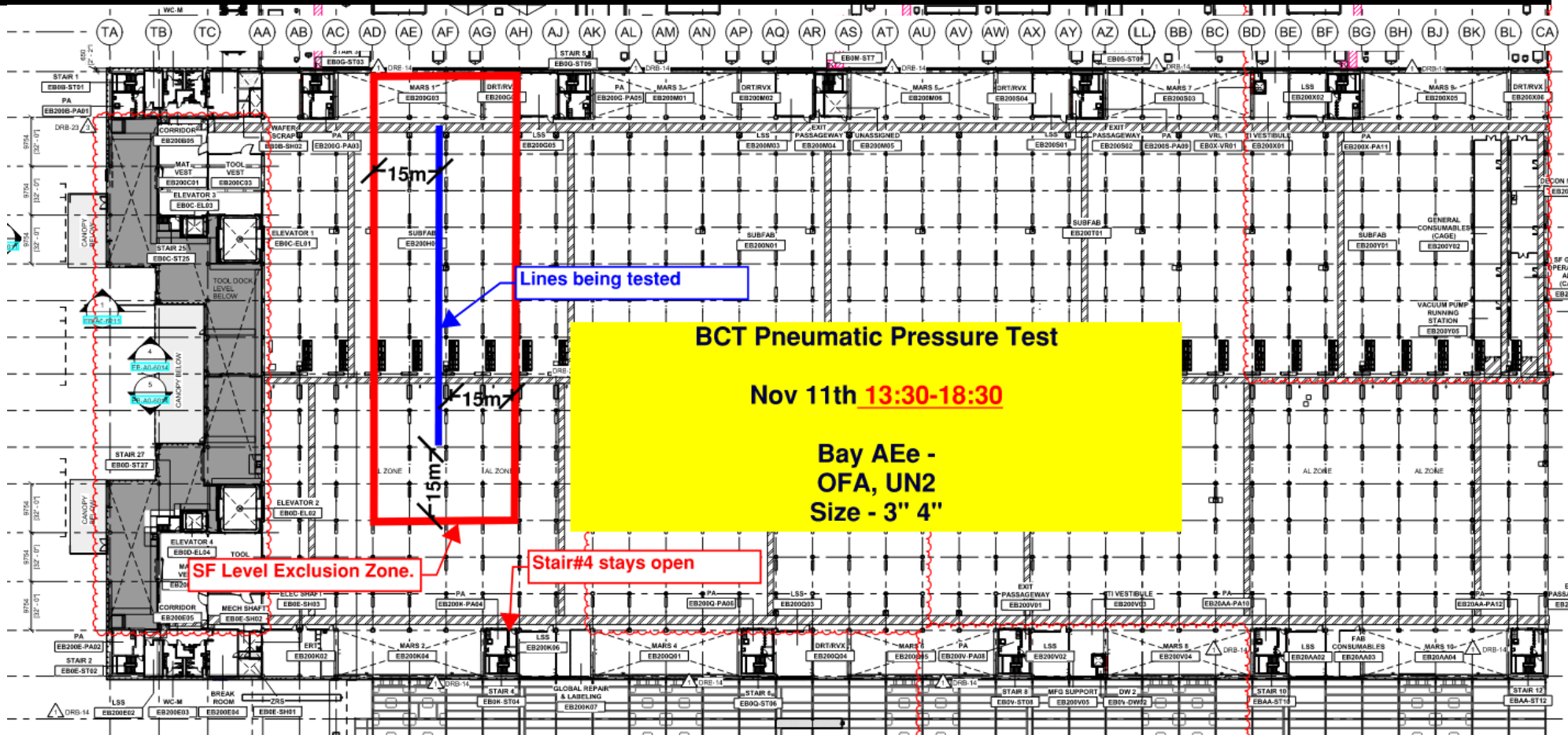
# SUBFAB BUILDOUT MOD 1



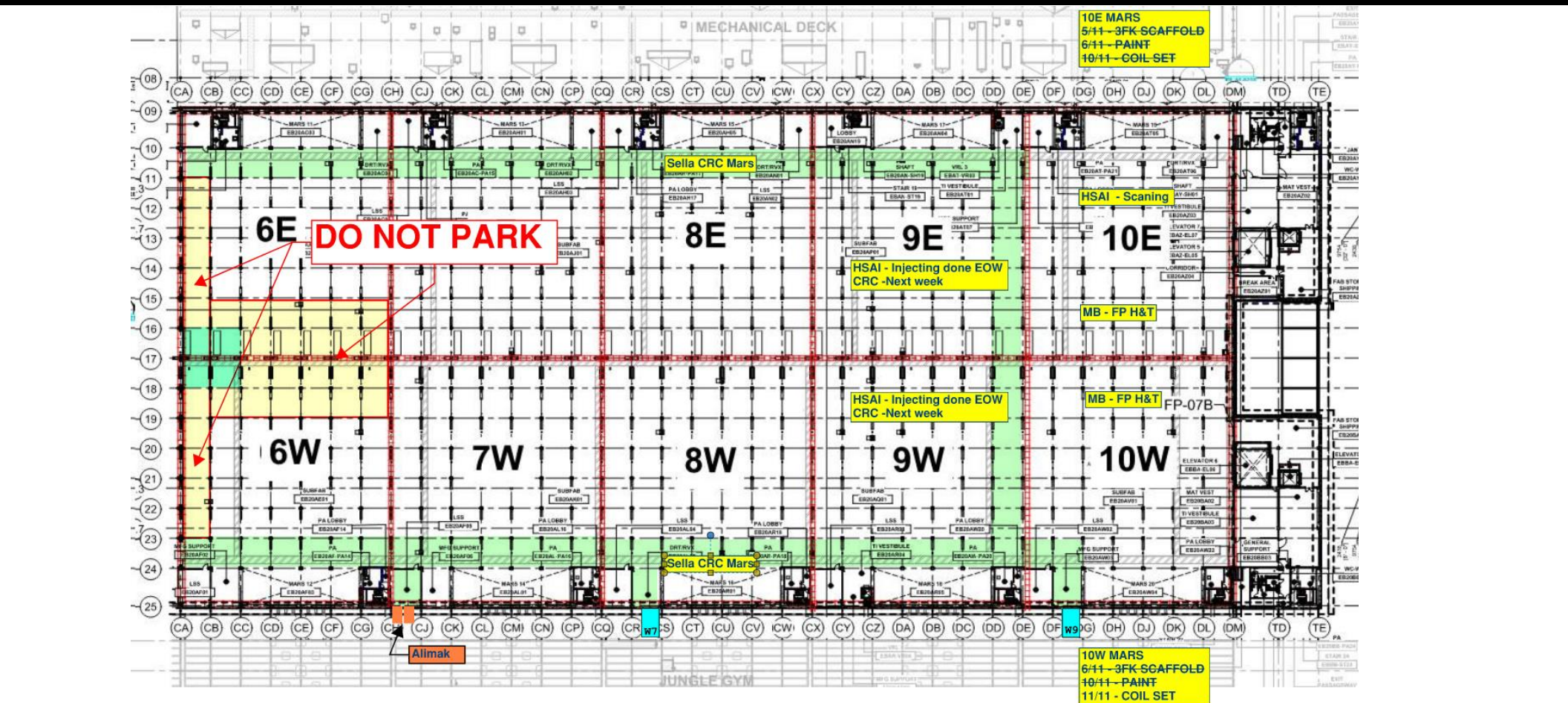
# SUBFAB CRC TOPCOAT

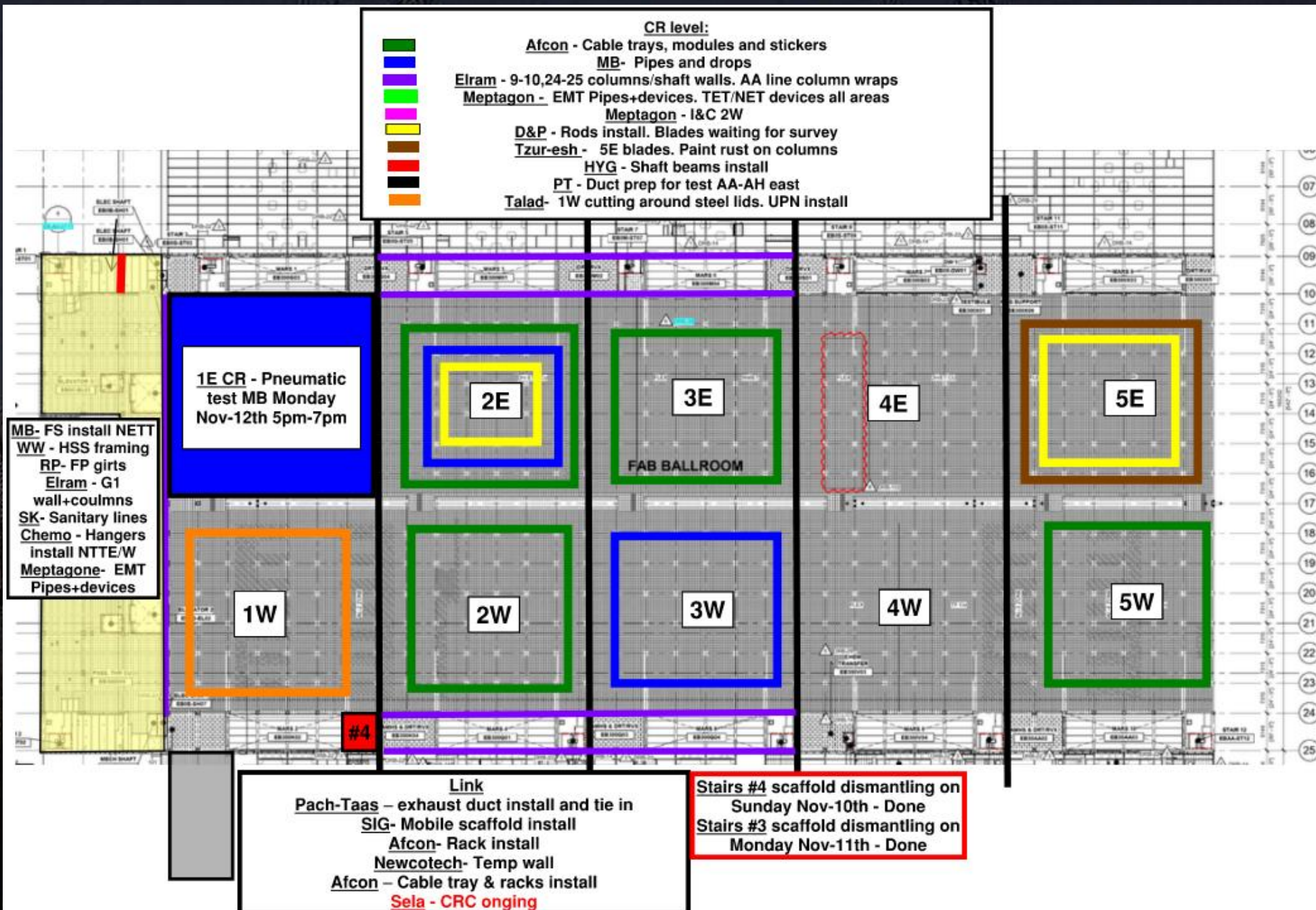
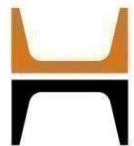


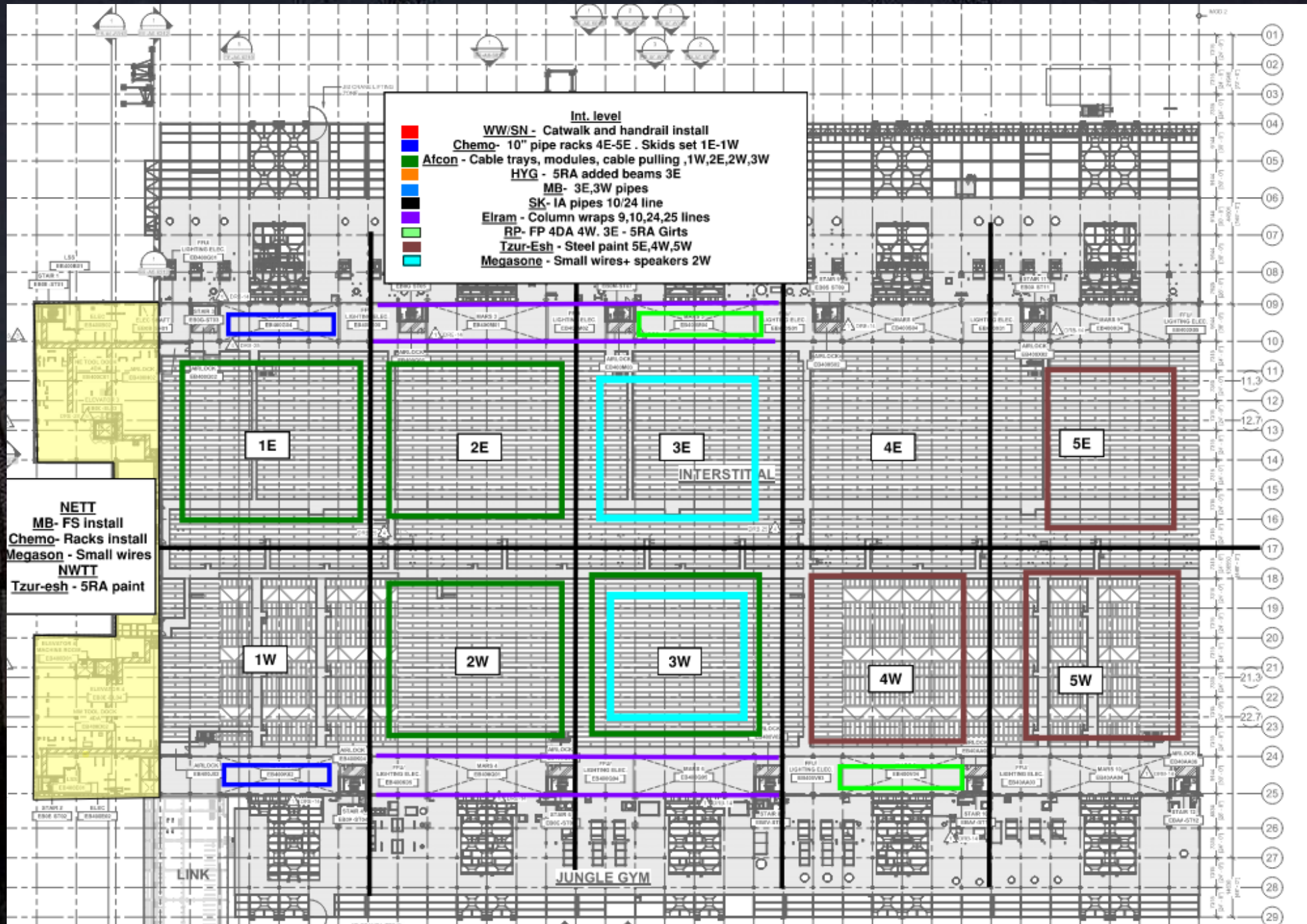
# BCT Pressure Test Sunday

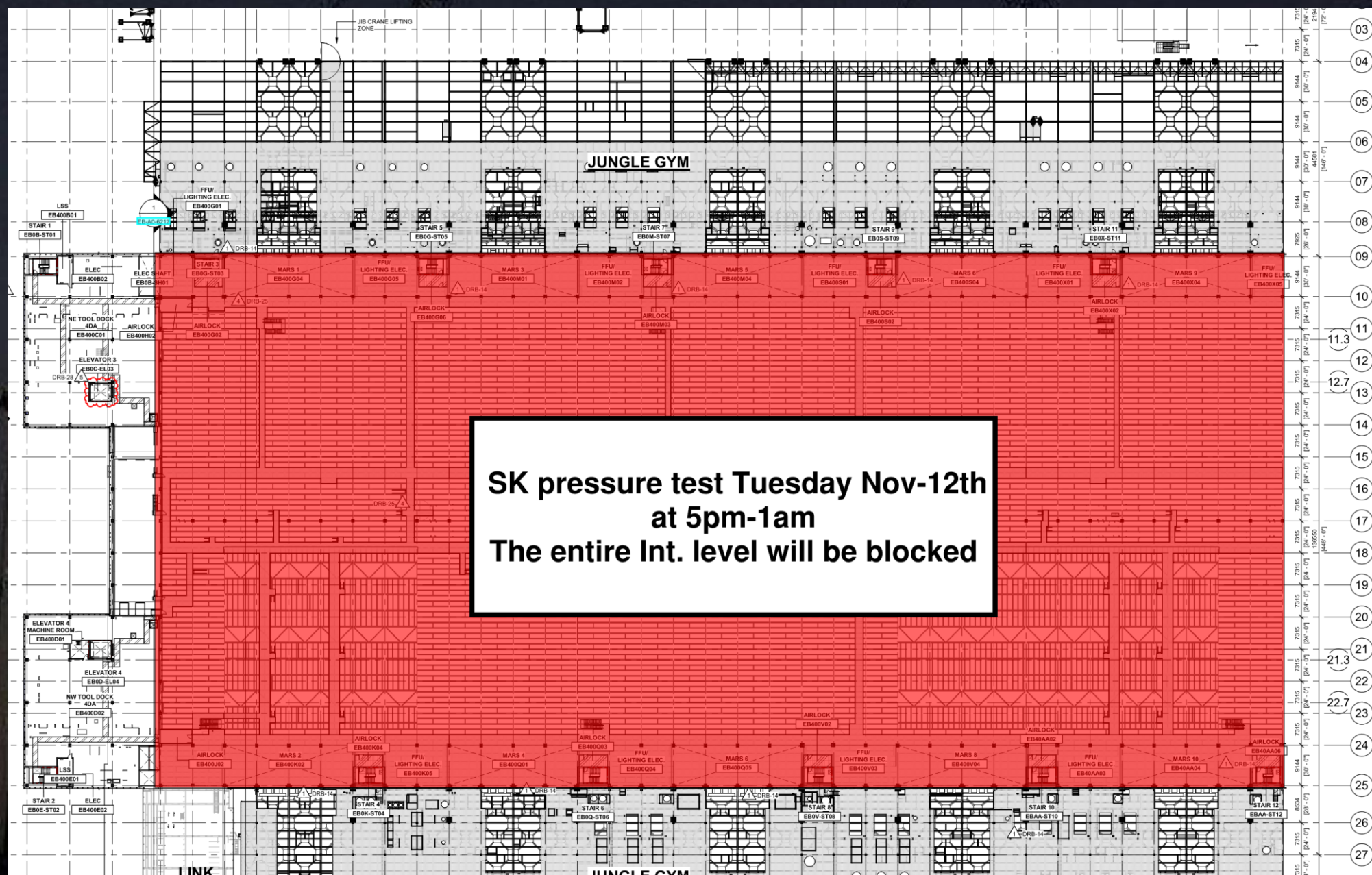


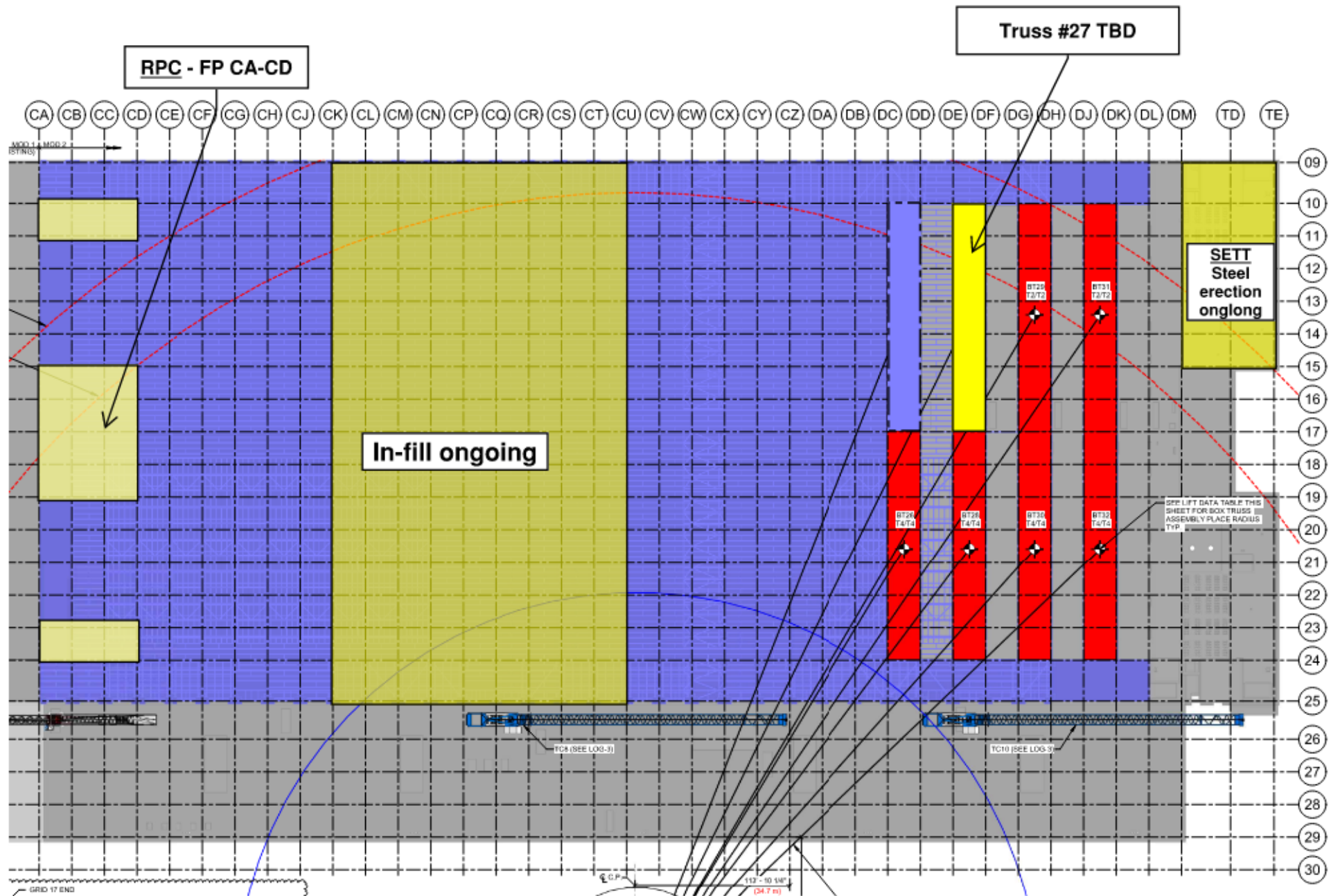
## SUBFAB BUILDOUT MOD 2

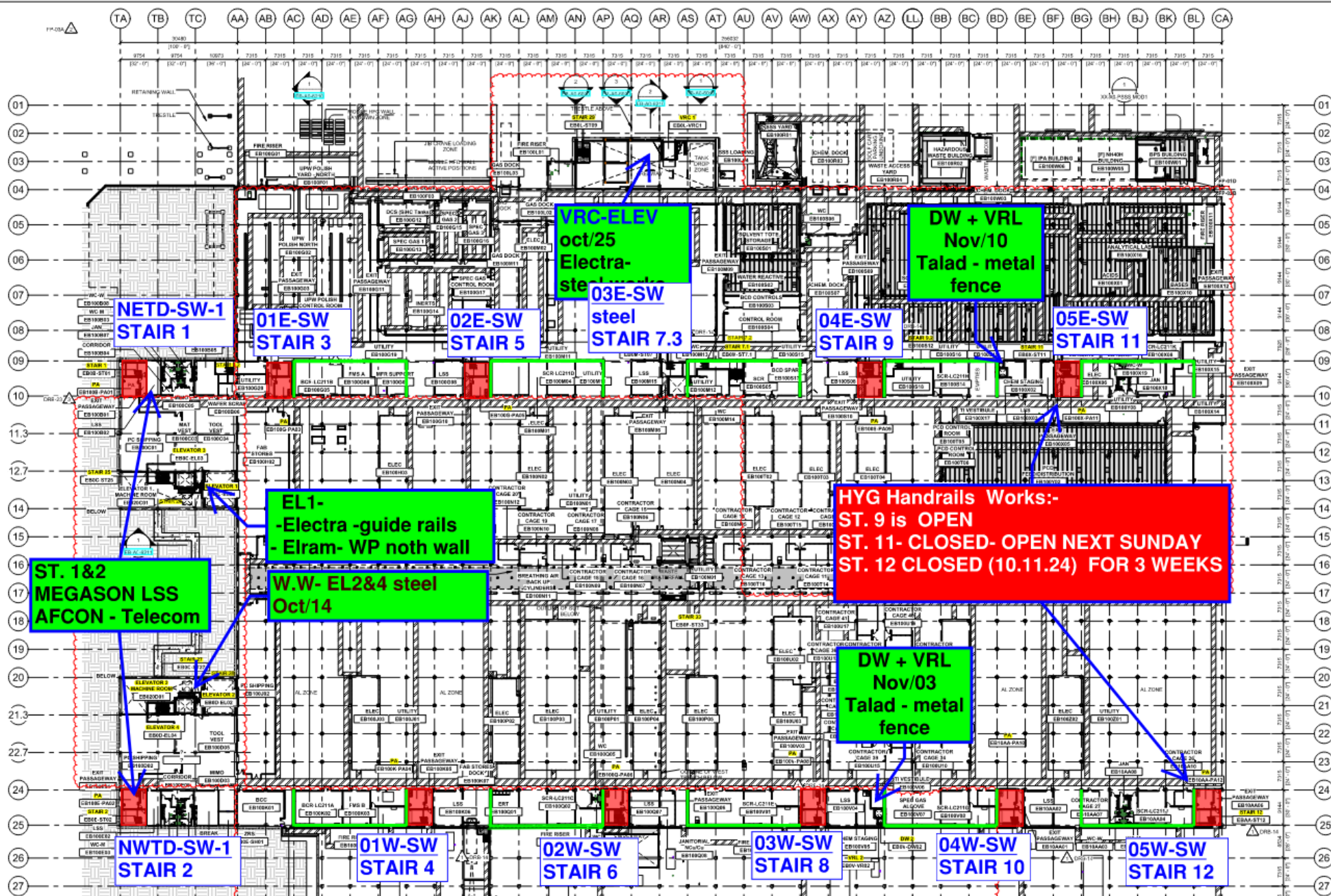












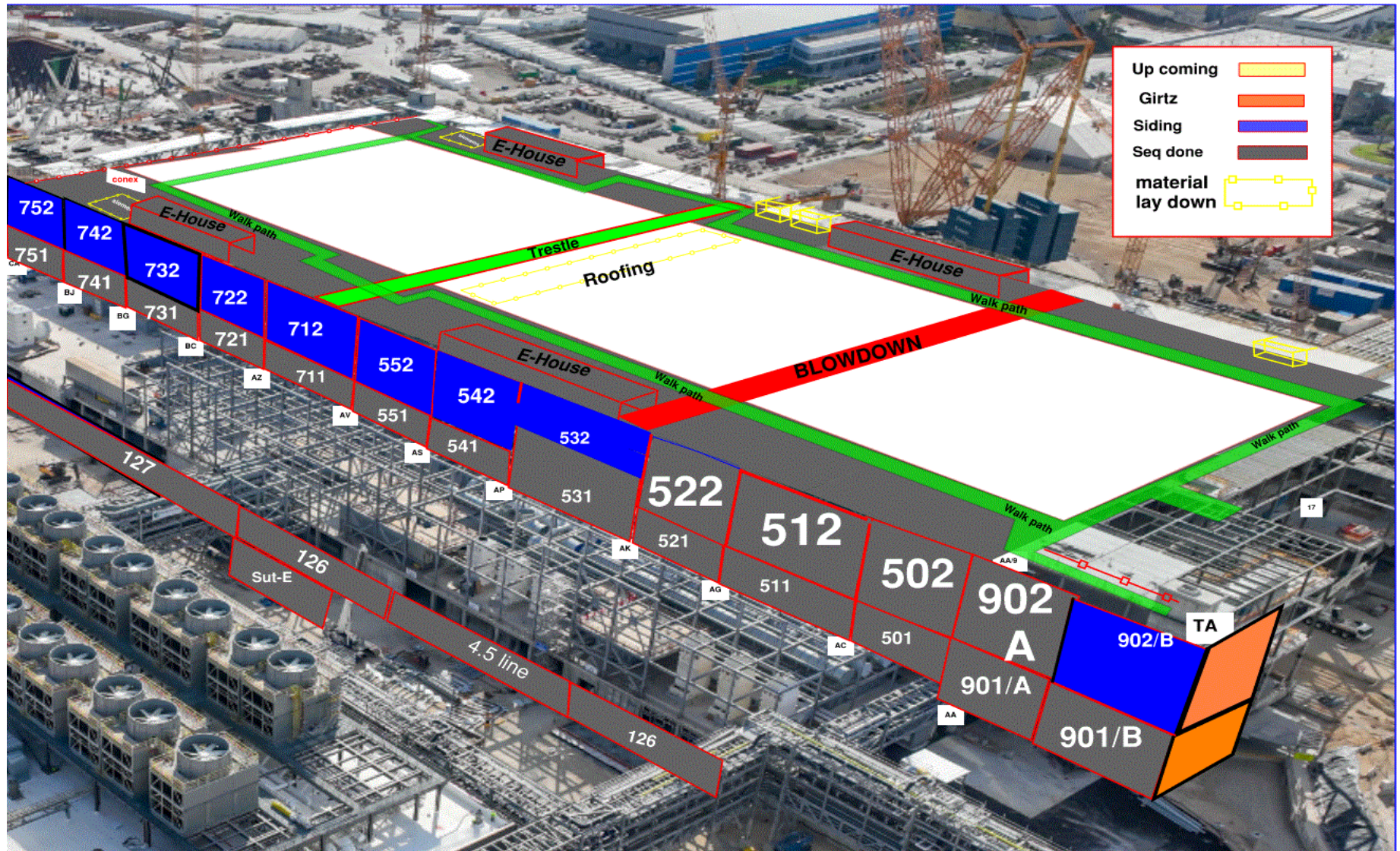
Siding - West FAB - JYG

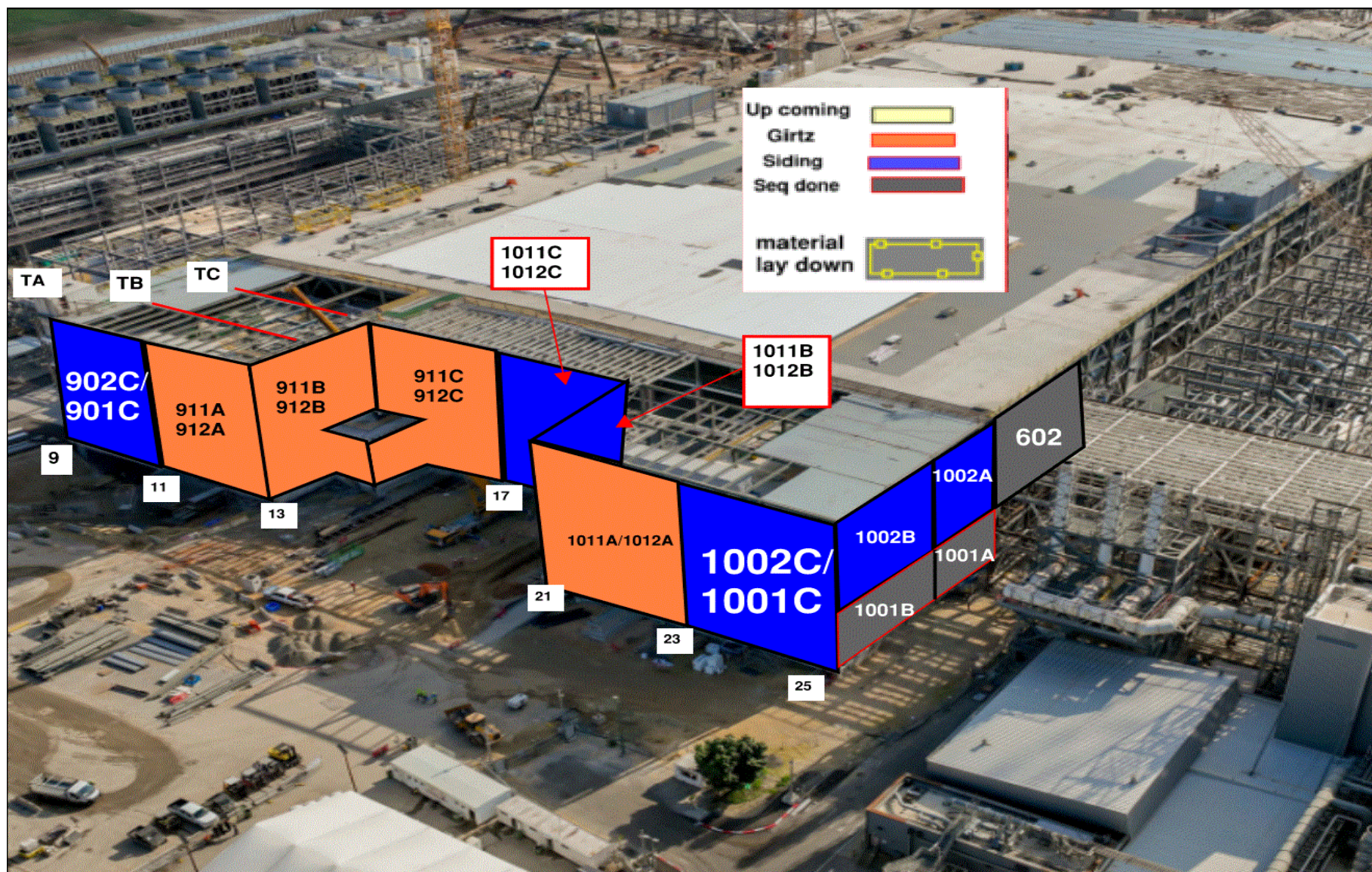
BLOWDOWN 30%

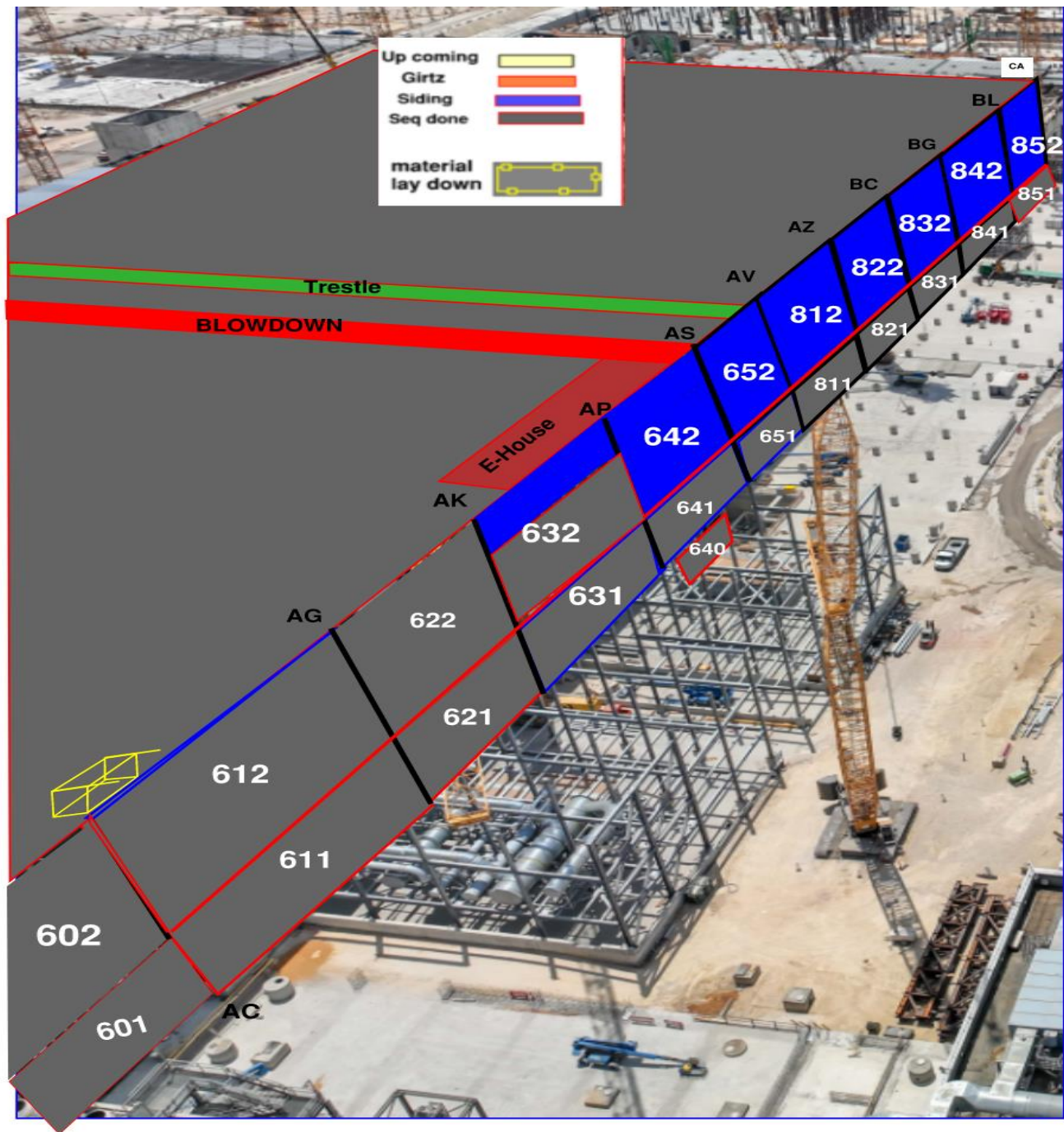
[illegible]

Siding - East FAB - PSSS

[illegible]



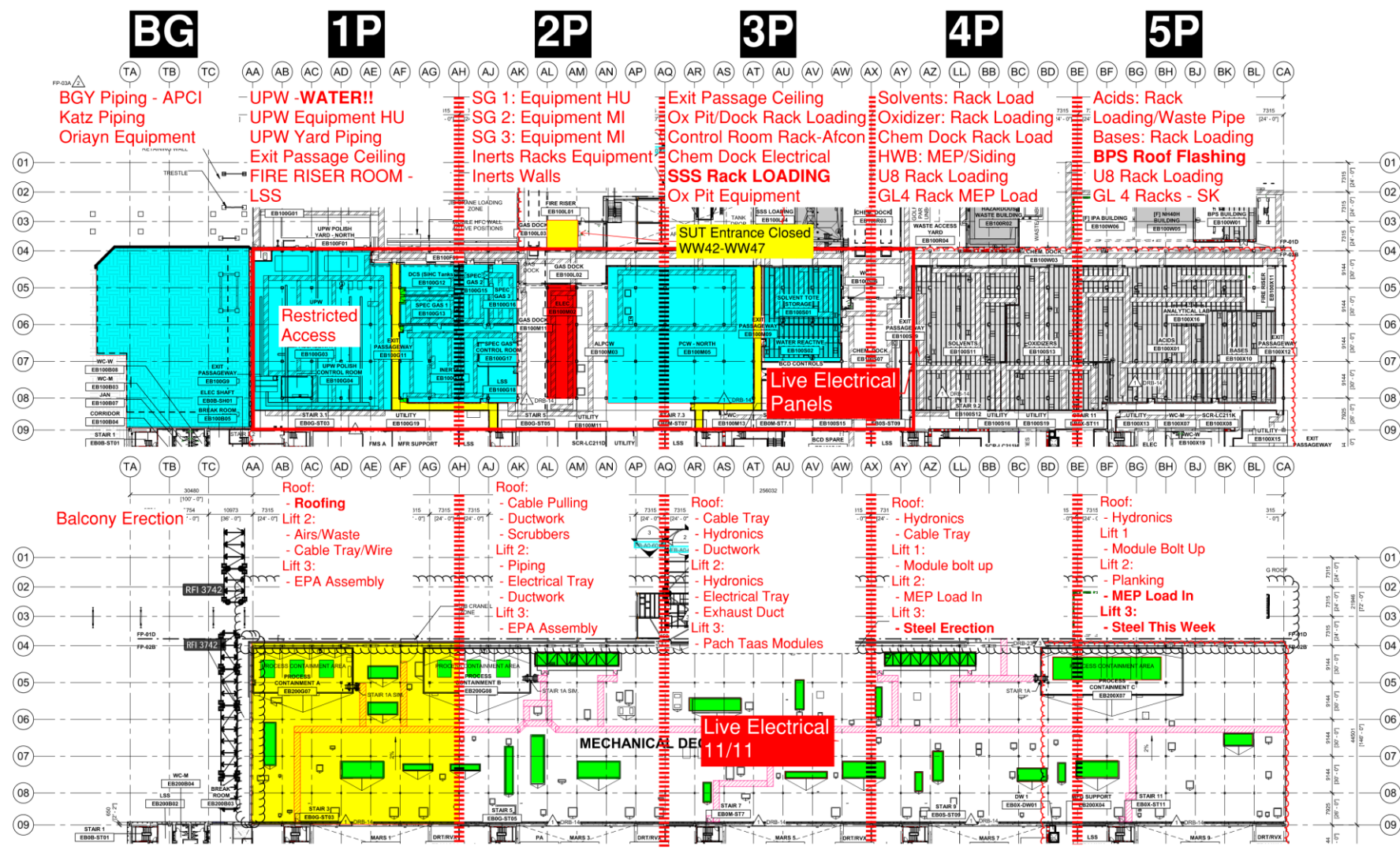




# PSSS.1

## Utility Level 1YA

## PSSS Roof 2SA

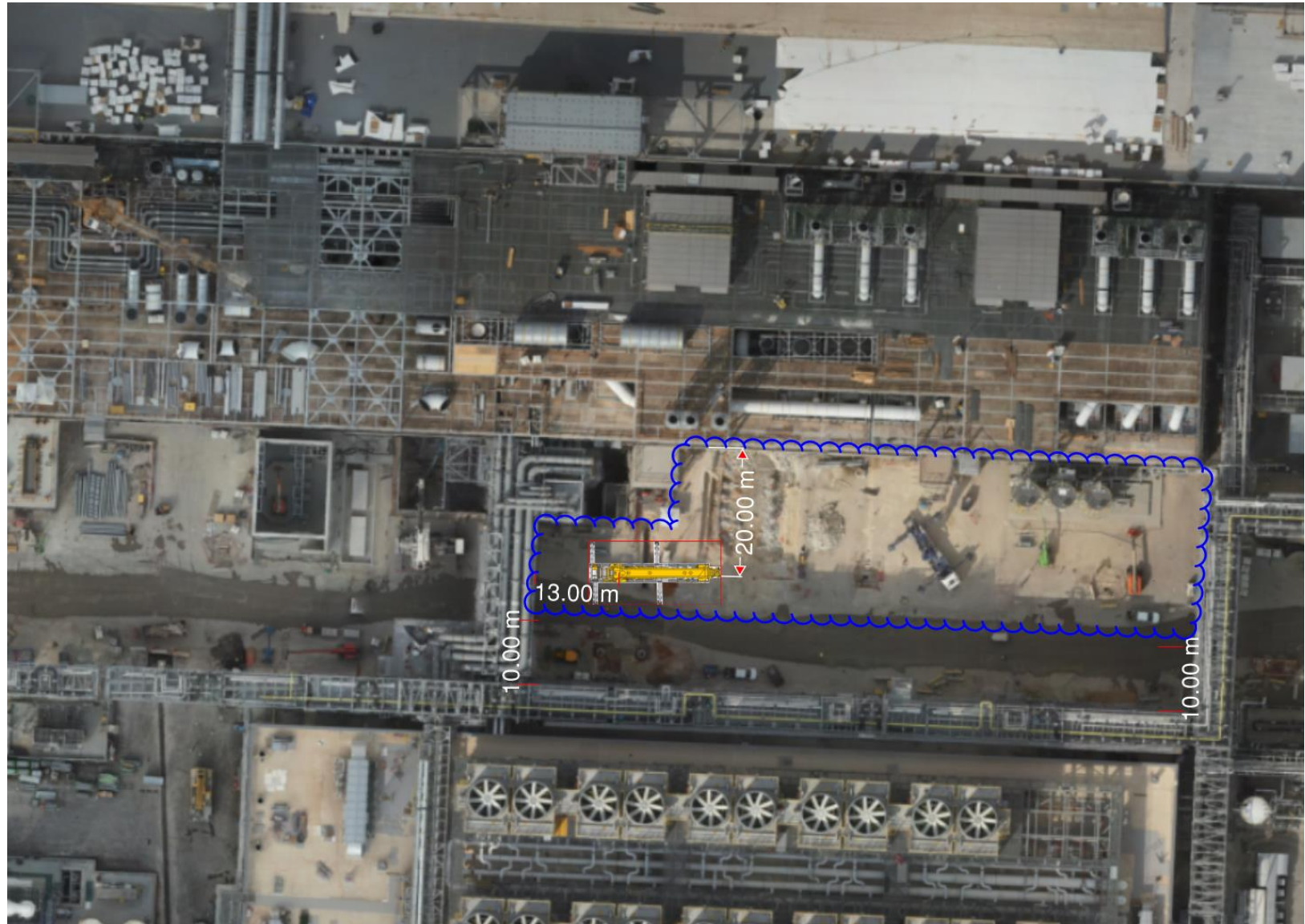


# PSSS.2



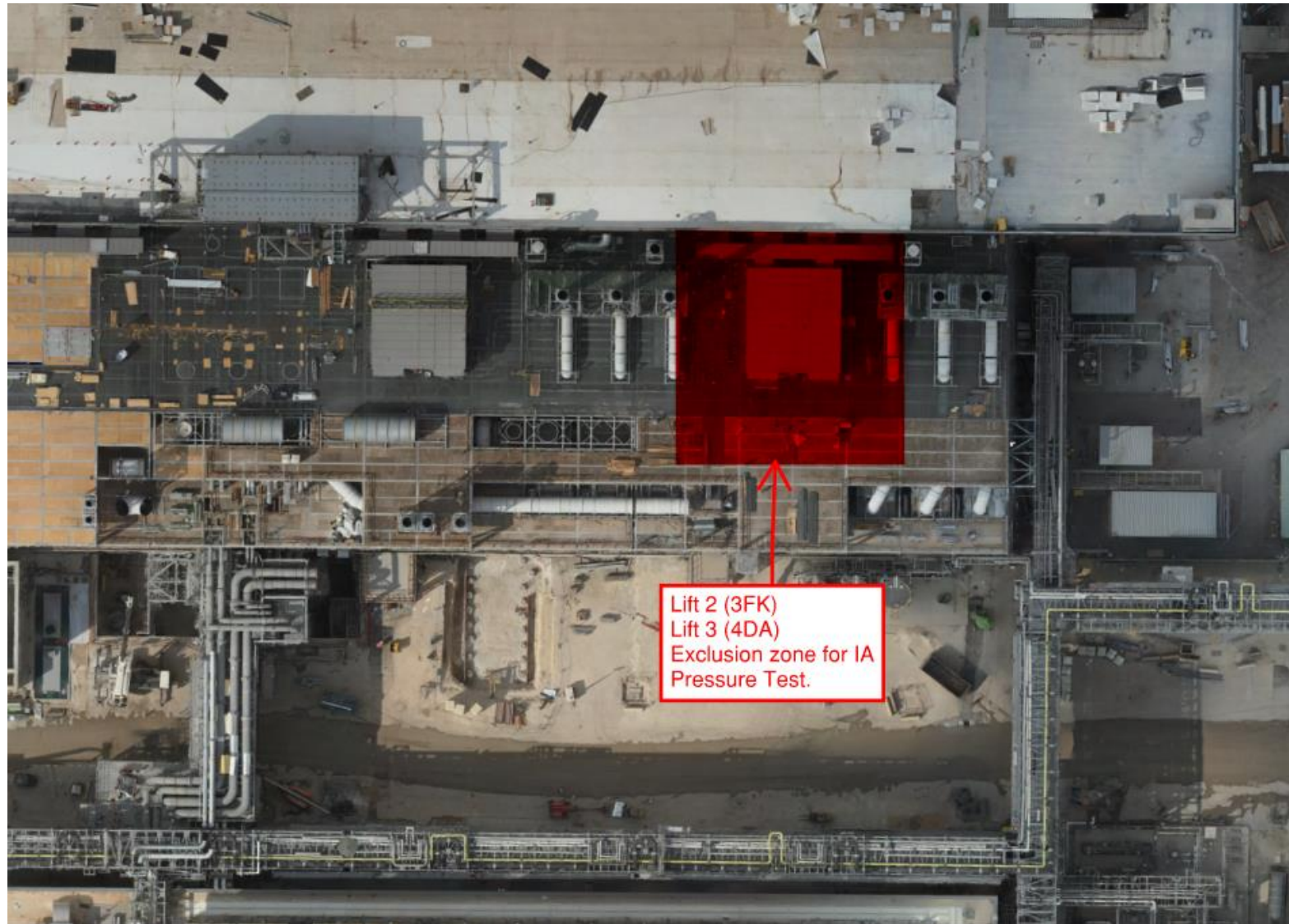
AHU Sets 13 & 14

# 500T Build for PSSS 11/11- 12/11





IA  
Pressure  
Test  
12/11  
17:00-  
04:00





# WJG 01J, 02J LIFT 2 & 3



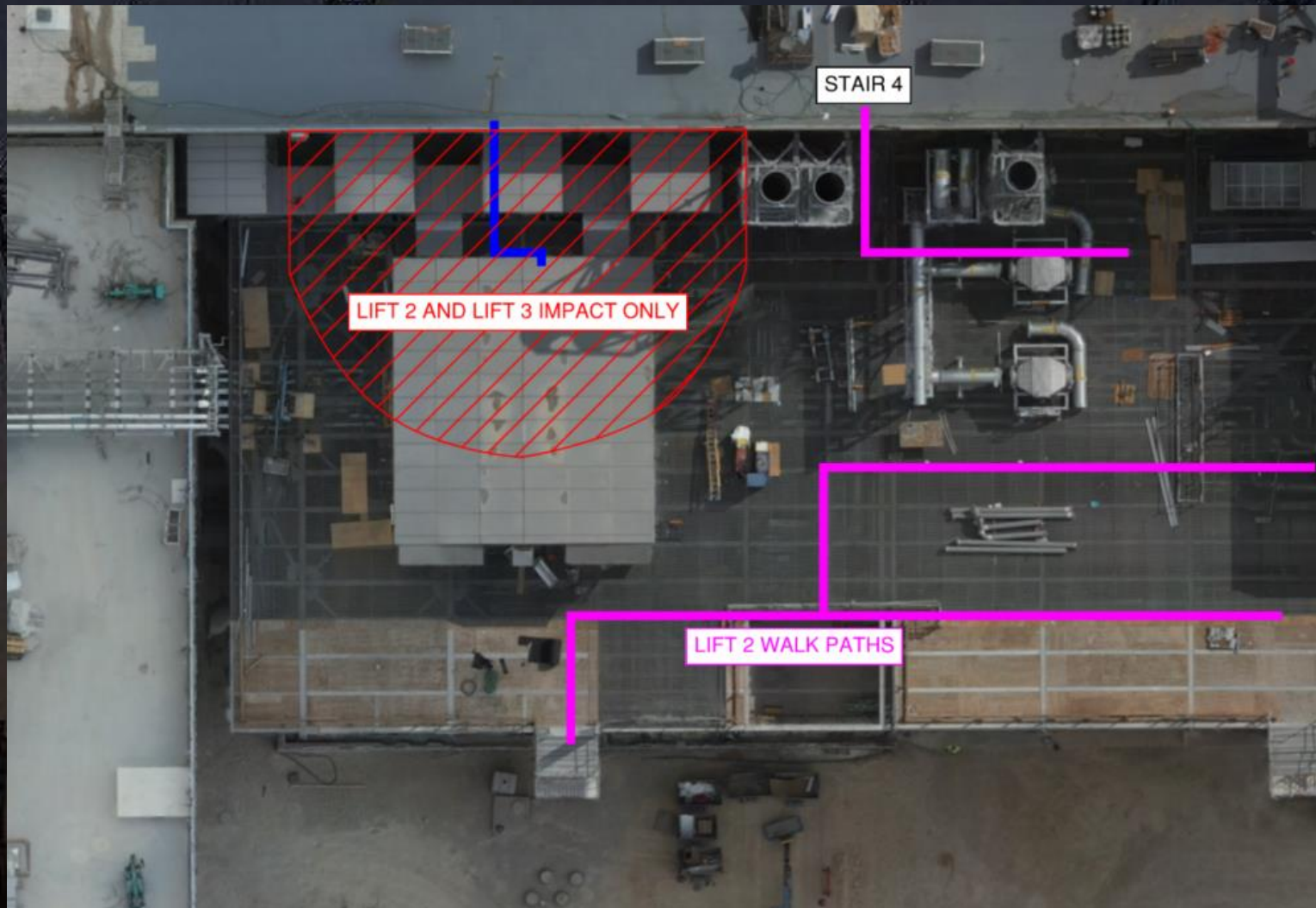


# WJG 03J, 04J, 05J LIFT 2 & 3



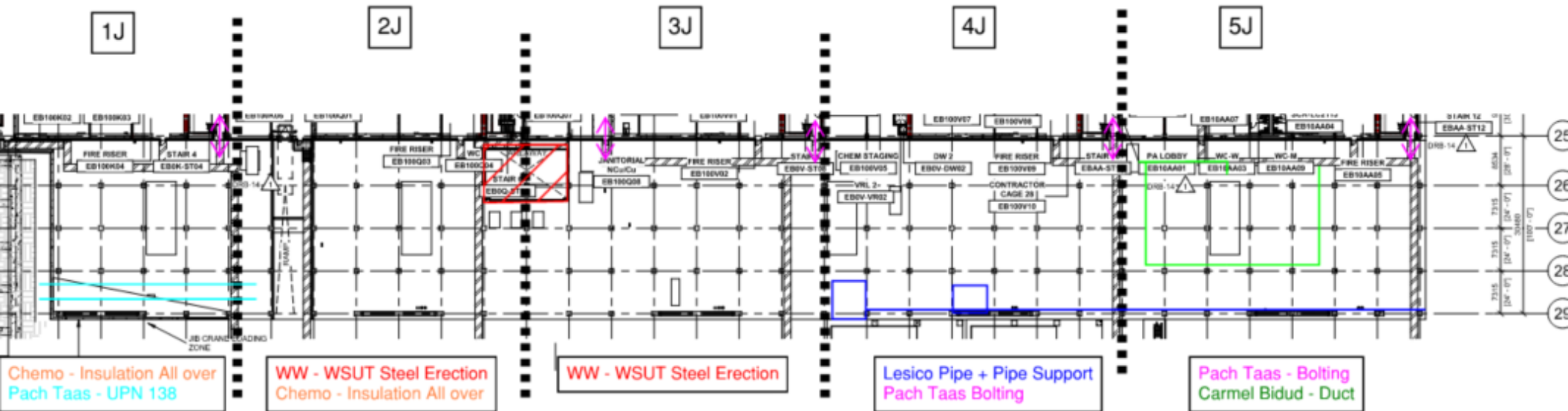


# IA Pressure test Exclusion Zone 12/11/2024 Night Shift





# WJG UTILITY LEVEL BUILD OUT



**CUB 1 EVACUATION MUSTER LOCATION**

**NORTH YARD**

**WATER TREATMENT**

**SAND FILTERS**

**CHILLERS**

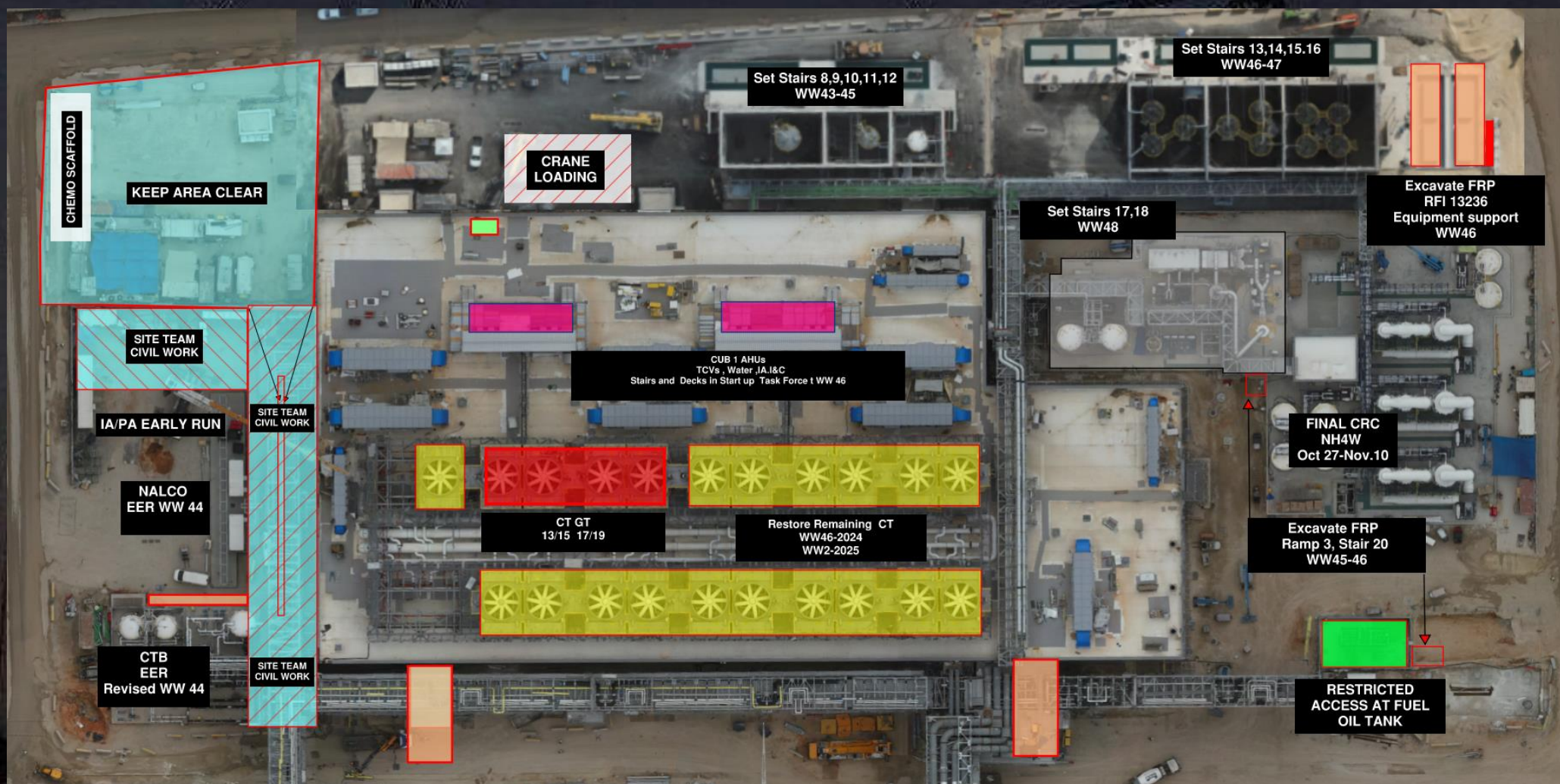
**BOILERS**

**EGRESS KEEP CLEAR**

**NOTE:**

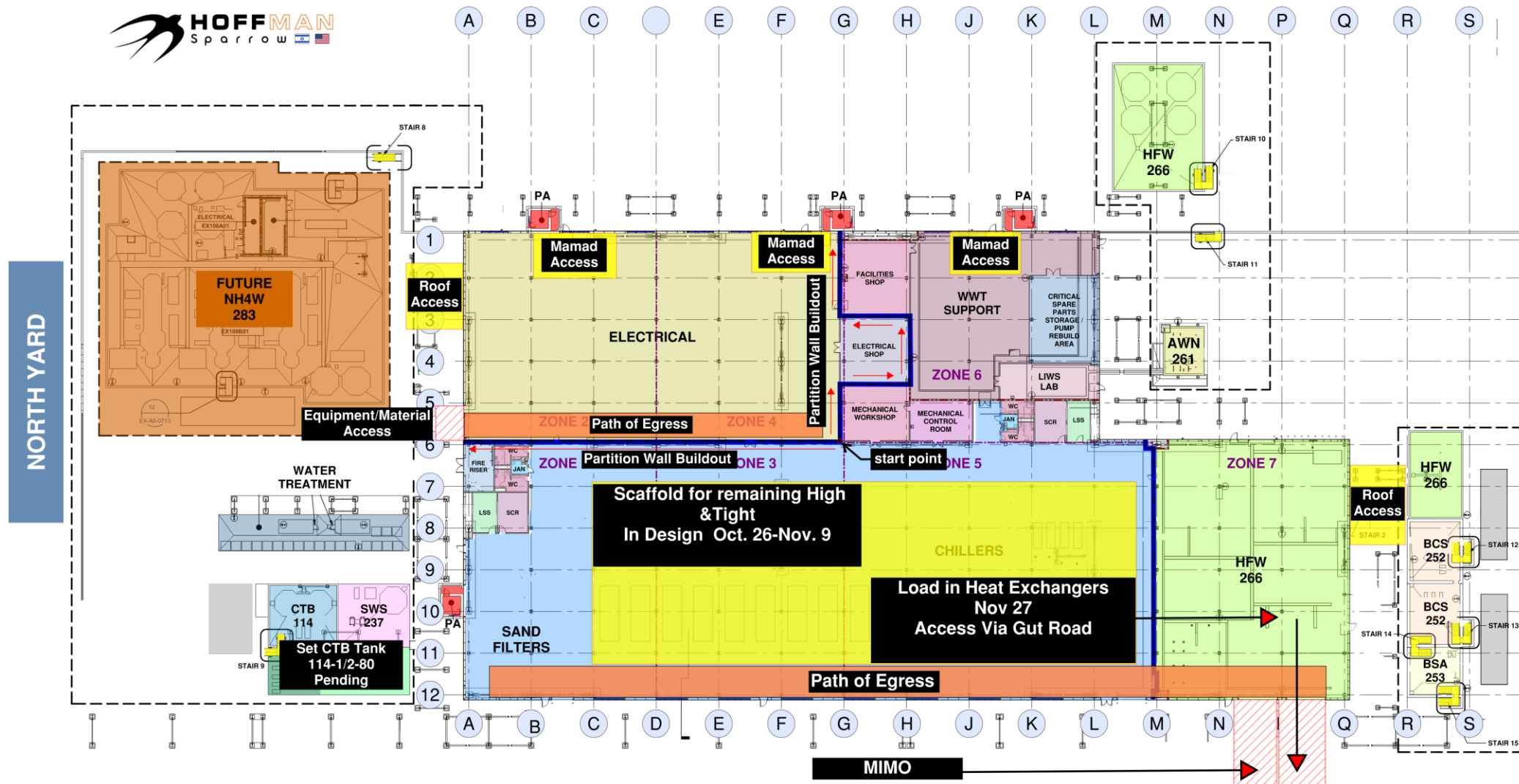
1. REFRIGERANT DETECTION SYSTEM IS LIVE.
2. IF ANY ALARM IS SOUNDED-ALL WORKERS MUST EVACUATE THE BUILDING
3. EVACUATION LOCATION TO E IN NORTH YARD OF CUB 1

# CUB 1 – EXTERIOR/ROOF

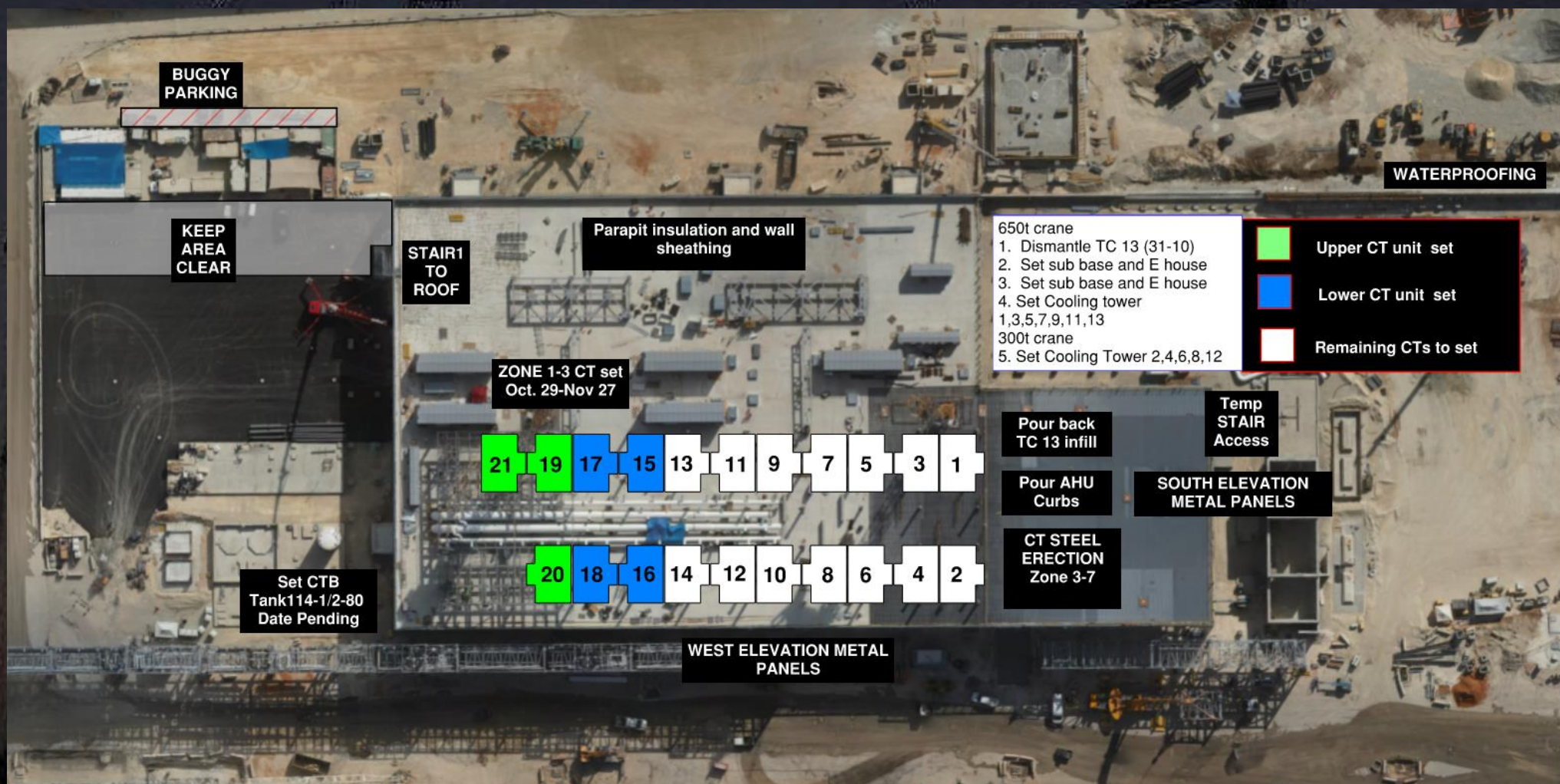


# CUB 2- Load in and H&T

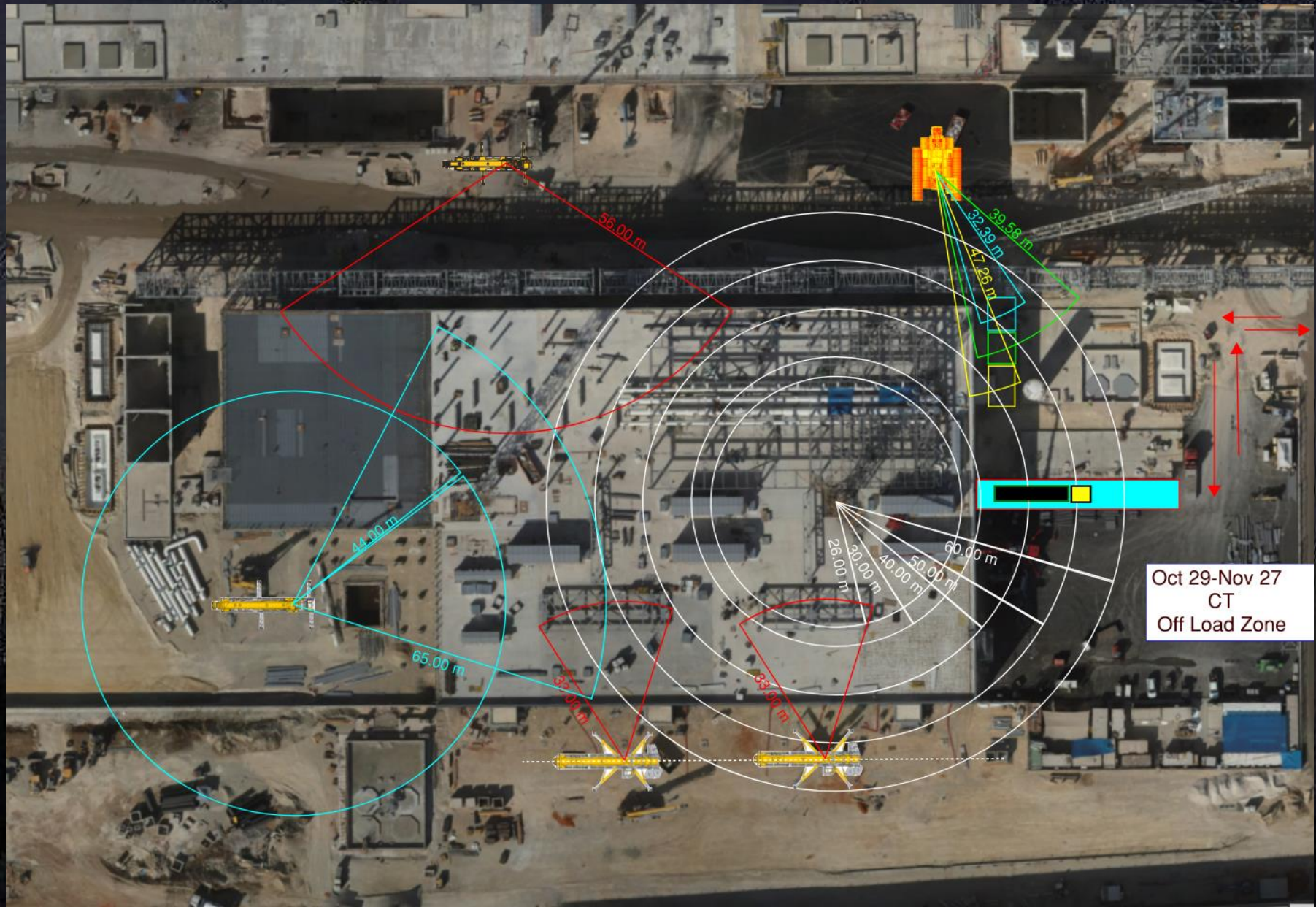
## CUB 2 COORDINATION MAP



# CUB 2 – EXTERIOR/ROOF



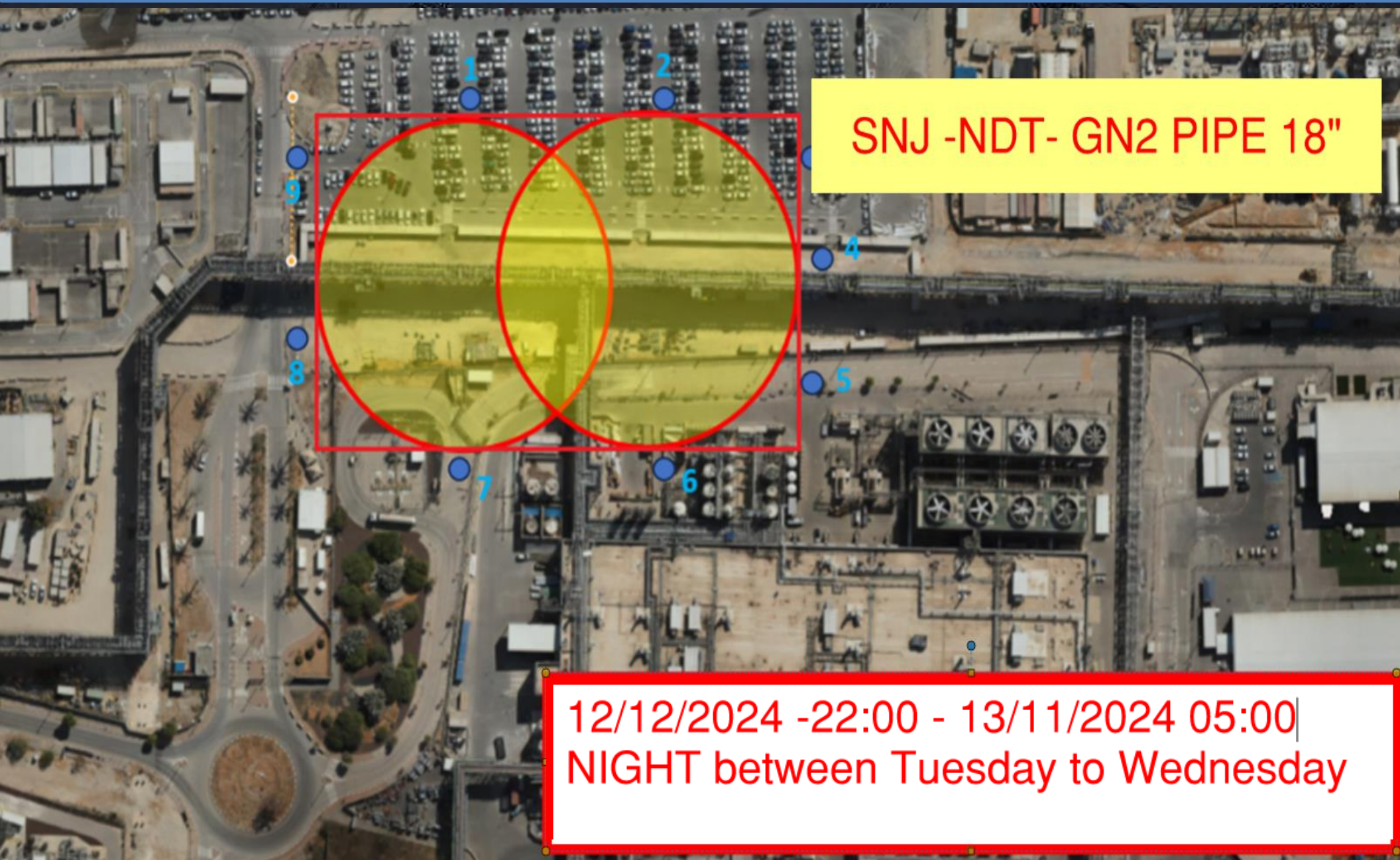
# CUB 2 – Crane Logistics







**HOFFMAN CONSTRUCTION COMPANY**



**SNJ -NDT- GN2 PIPE 18"**

**12/12/2024 -22:00 - 13/11/2024 05:00|  
NIGHT between Tuesday to Wednesday**



**HOFFMAN CONSTRUCTION COMPANY**



# Daily Coordination Meeting

Site Logistics

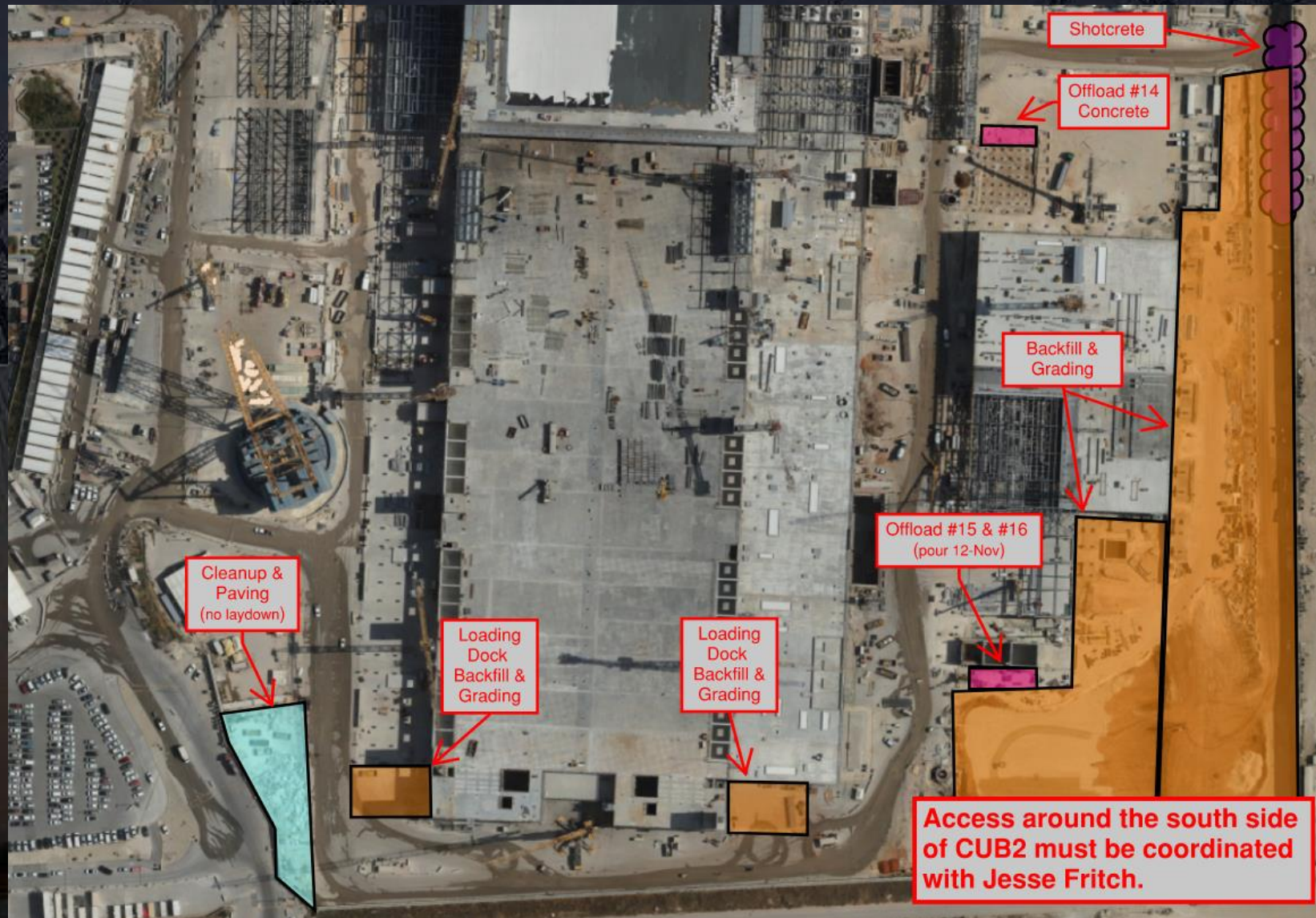
North



# Daily Coordination Meeting

## Site Logistics

### South



# Improper Use of Tools or Equipment

Here is a picture of a worker who, instead of using the appropriate equipment, is using a bucket to elevate himself, instead of using a step ladder or platform ladder.

It is important to remember that when assigning a task to an employee, we must ensure they have all the proper equipment for the job. The team leader is responsible for verifying this before the work begins.

This usage is unacceptable and puts the worker at risk, as they could easily lose their balance and fall, or break the bucket while standing on it, leading to injury.

As can be seen in the picture, there is a ladder right next to the worker, which he can use in the safest and most efficient way.



# Daily Coordination Meeting



14:00 Sign In