

# Daily Coordination Meeting



14:00 Sign In

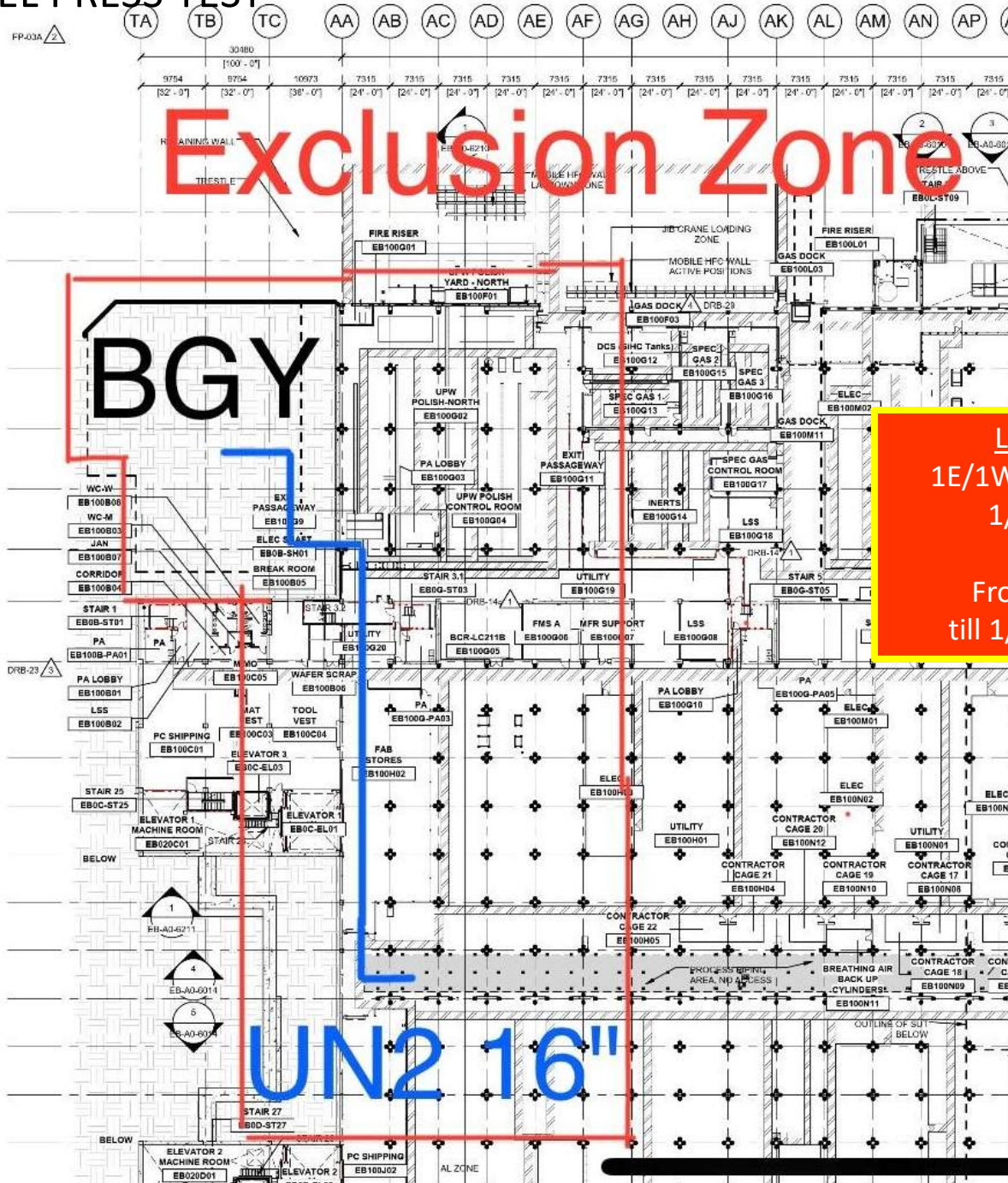
# Daily Coordination Meeting

## General Topics:

- **Water Bottles**
- **Risk of Dehydration**



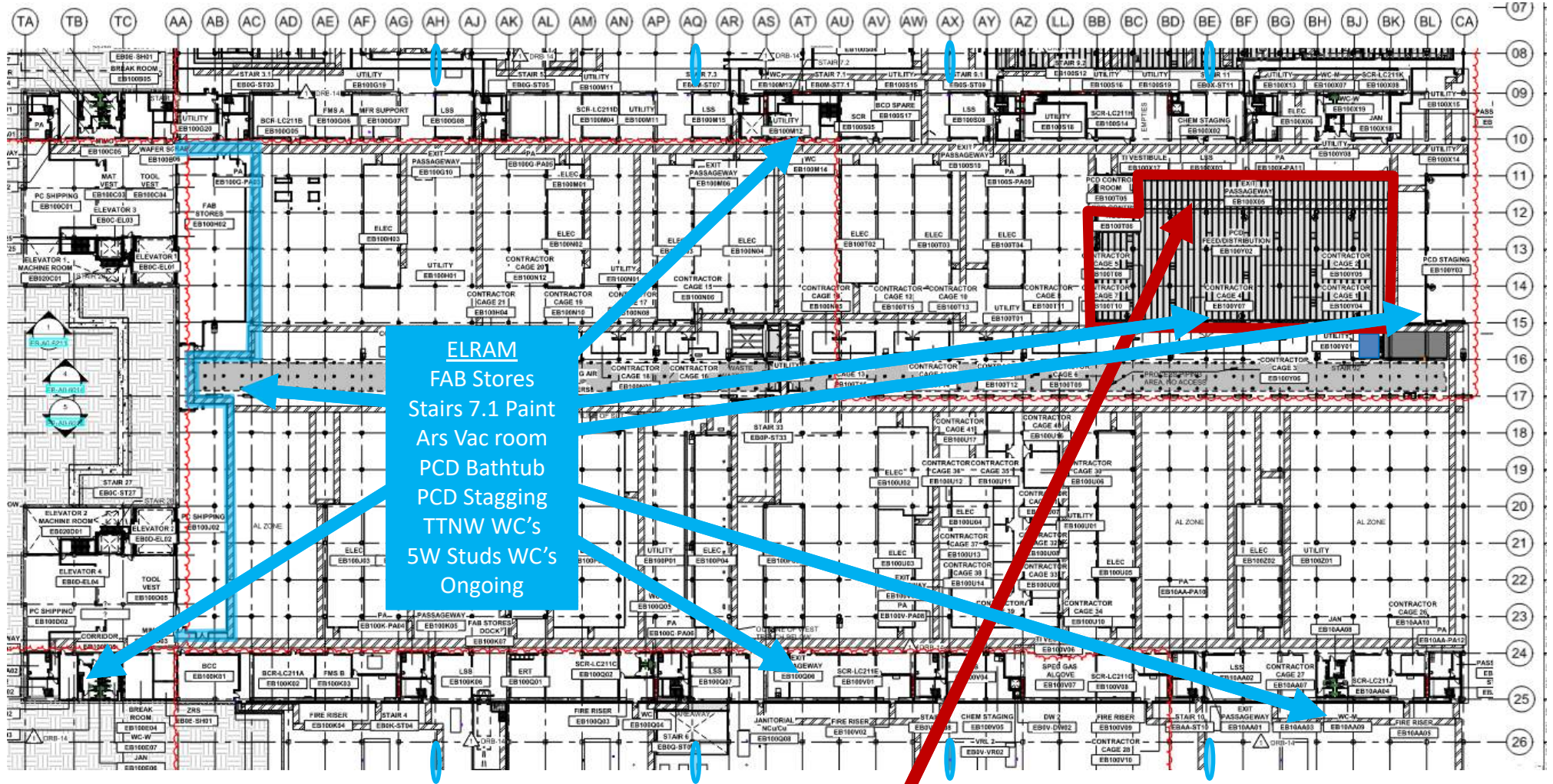
**UTILITY LEVEL PRESS TEST**



**LESICO**  
1E/1W Pres. Test  
1/30-31  
From 1/30  
till 1/31 13:00



**UTILITY LEVEL MOD1**

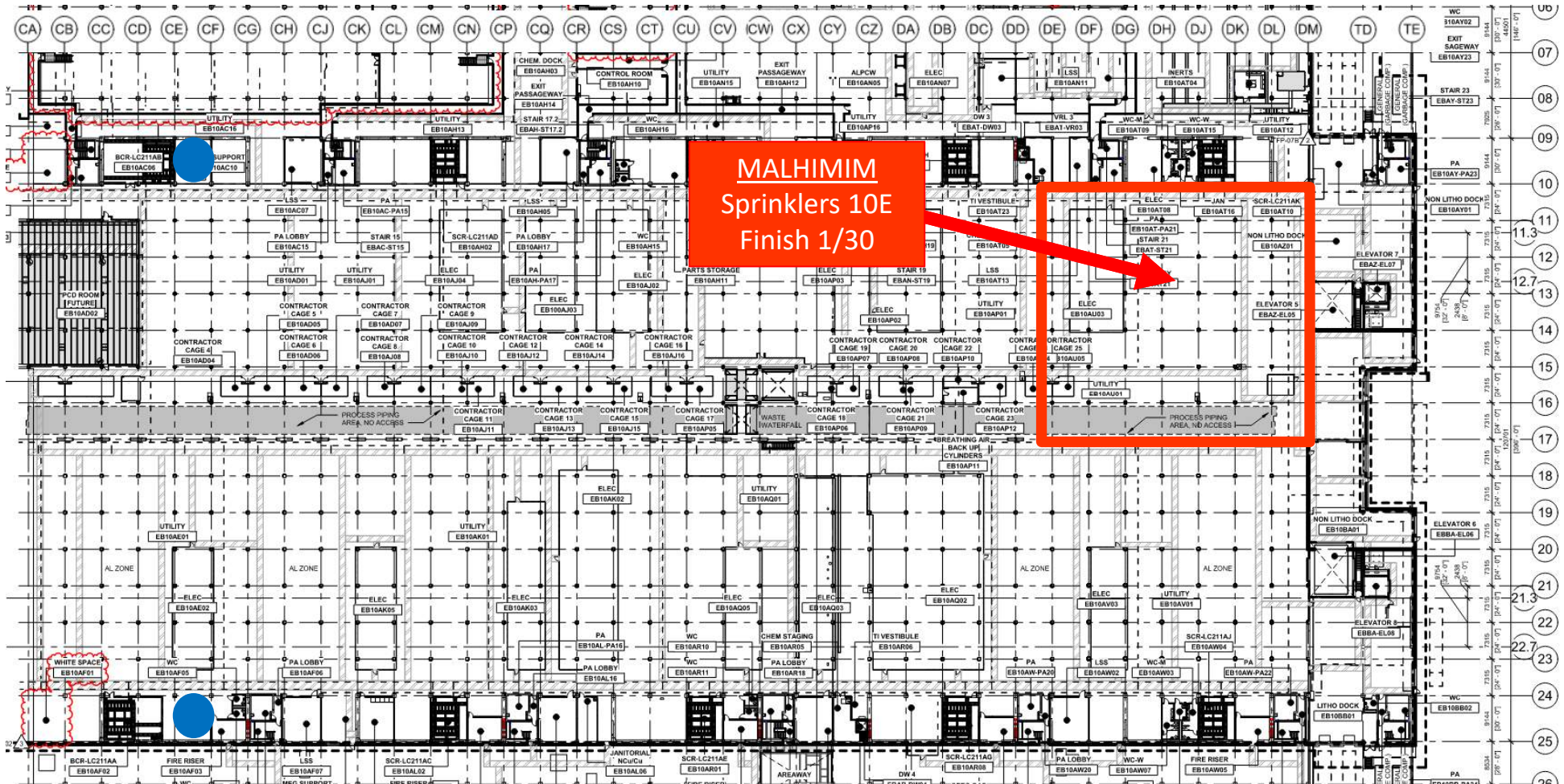


**ELRAM**  
**FAB Stores**  
**Stairs 7.1 Paint**  
**Ars Vac room**  
**PCD Bathtub**  
**PCD Staging**  
**TTNW WC's**  
**5W Studs WC's**  
**Ongoing**

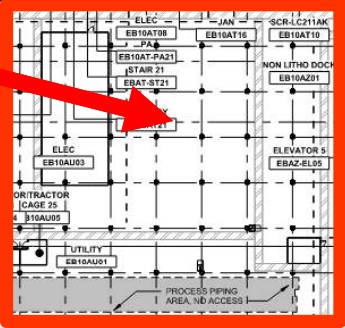
**HEATCOIL REPL.**  
**Taper Tech Ongoing**  
**Finish 1/30**  
**Pipe contractors In 2/2**



UTILITY LEVEL MOD2

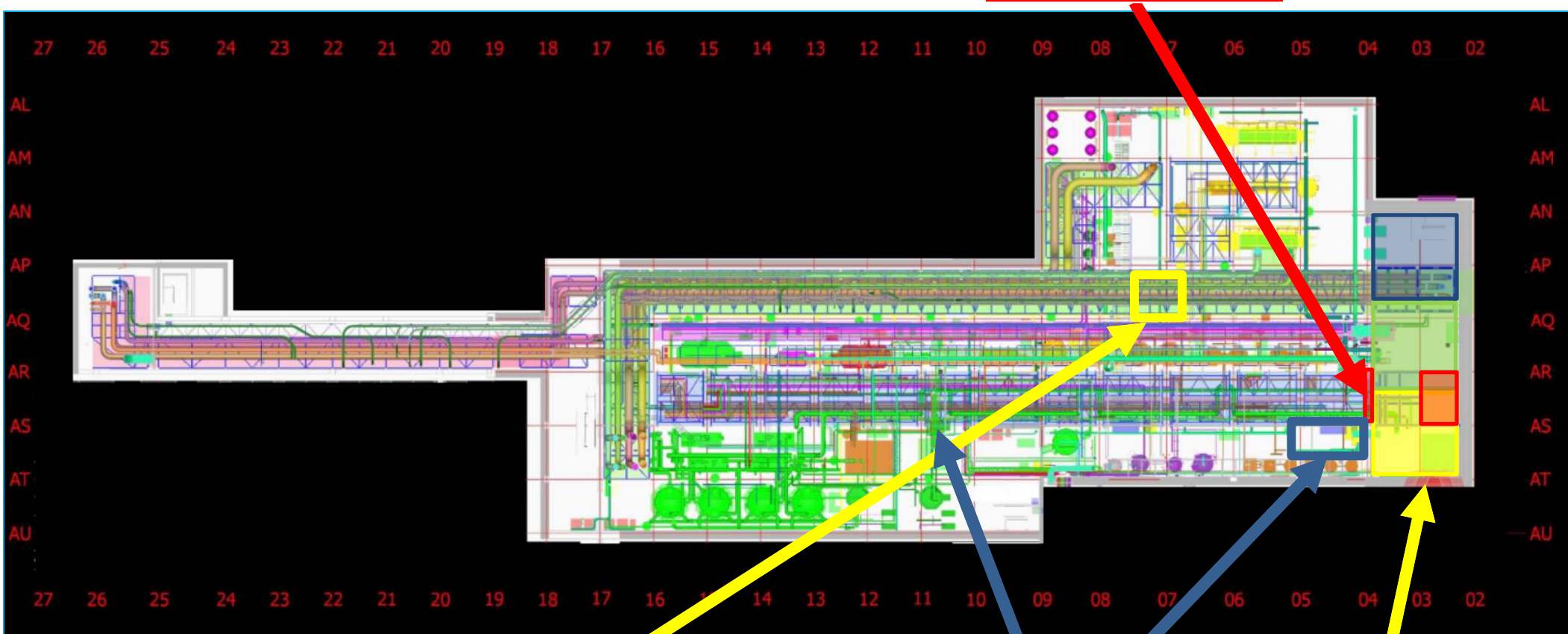


**MALHIMIM**  
Sprinklers 10E  
Finish 1/30





SUT 38.1 LEVEL



OH roll-up door  
Install 30/1

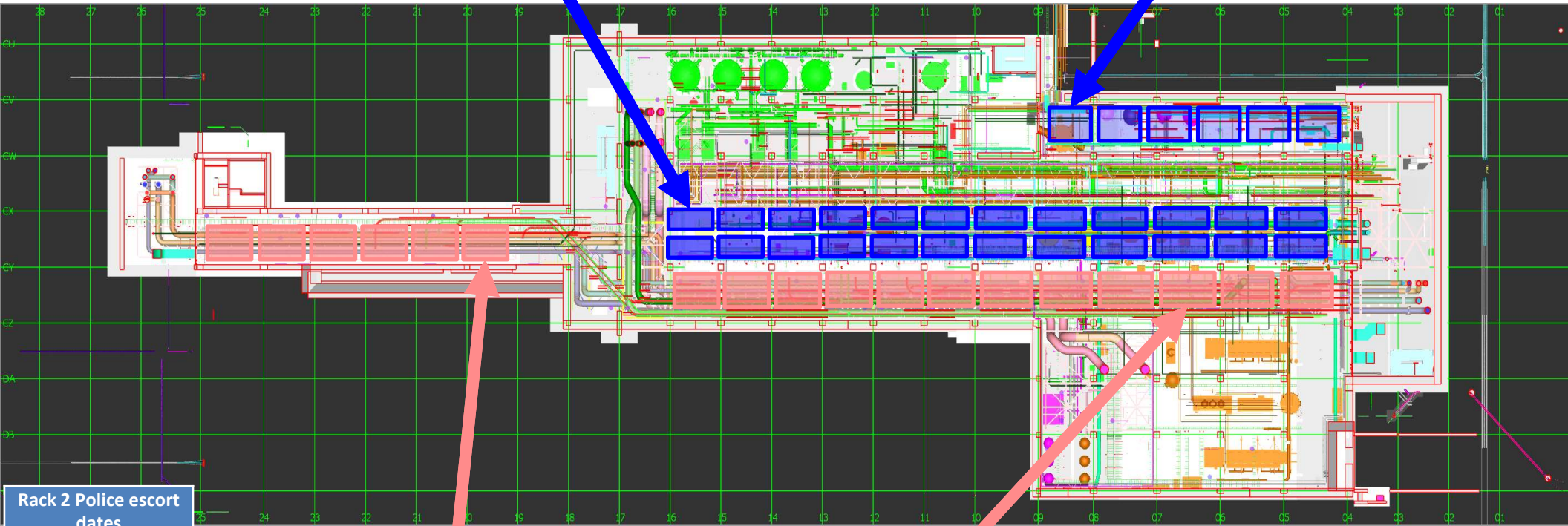
CRC

HYG  
Need to install SOG platform +  
Bodice Grating ASAP

Topping slab Schedule  
 Pour 1 - 1/9 - 1/15 V  
 Pour 2 - 1/15 - 1/22 V  
 Pour 3 - 1/22-1/27 V  
 Pour 4 - 1/28-2/4



SUT 38.2 LEVEL



Rack 1B

Rack 4b

Rack 6  
MIMO -  
Module #1  
12.2.25

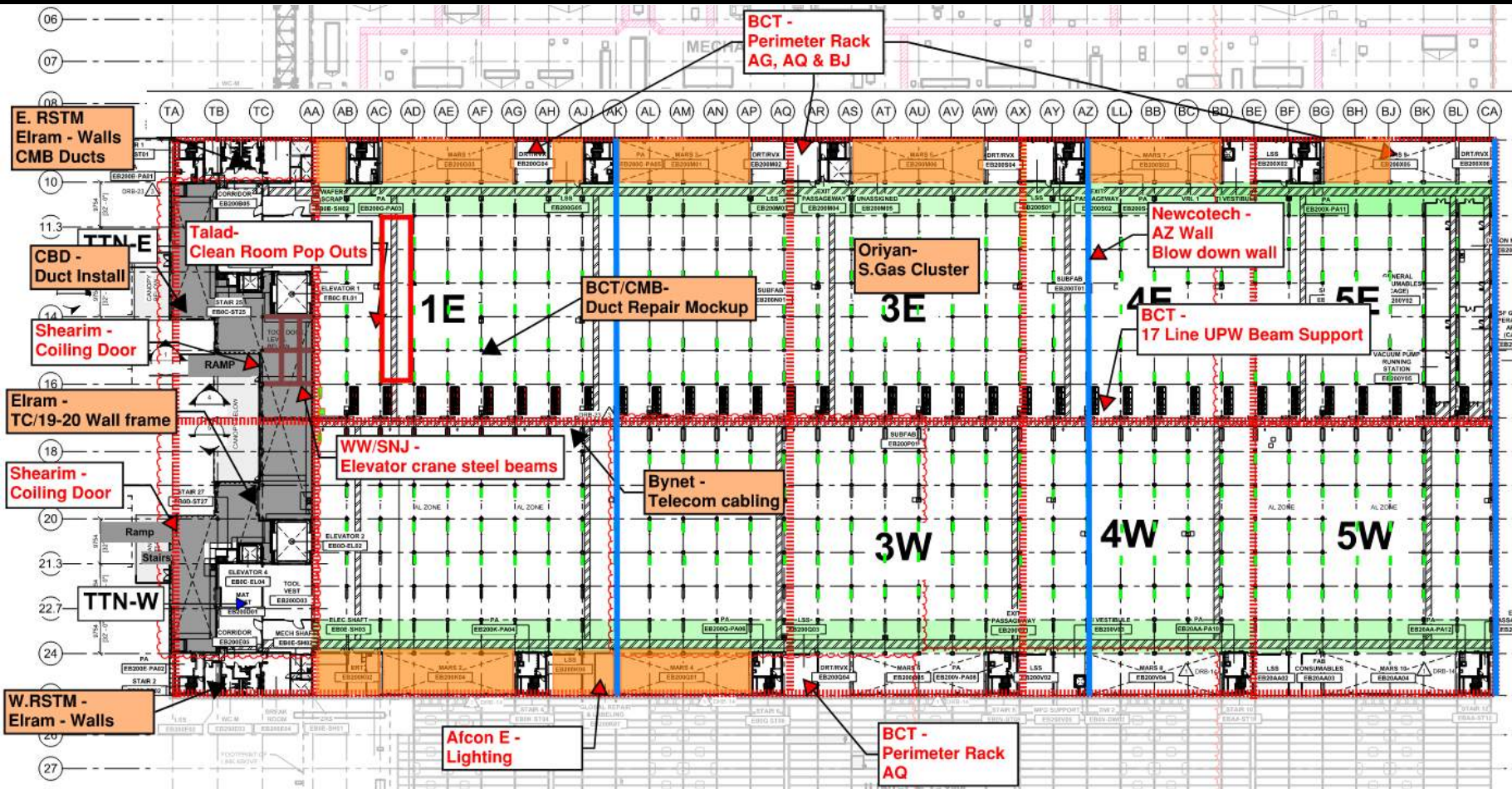
Rack 2  
MIMO -  
Module #10  
2.2.25

**Rack 2 Police escort dates**

- v24.11.24
- v25.11.24
- v3.12.24
- v9.12.24
- v12.12.24
- v15.12.24
- v17.12.24
- v22.12.24
- v5.1.25
- 14.1.25 > 2.2.25**
- 3.2.25
- 9.2.25

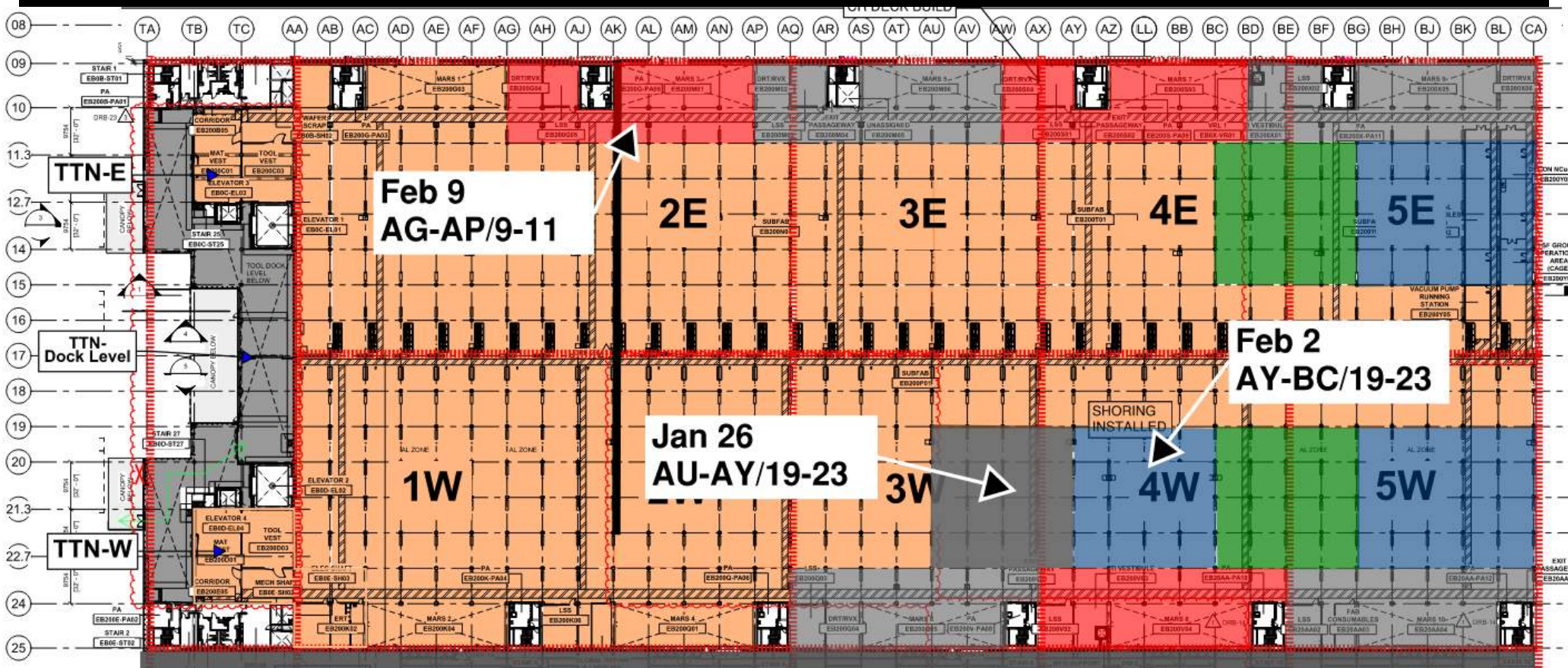


# SUBFAB BUILDOUT MOD 1



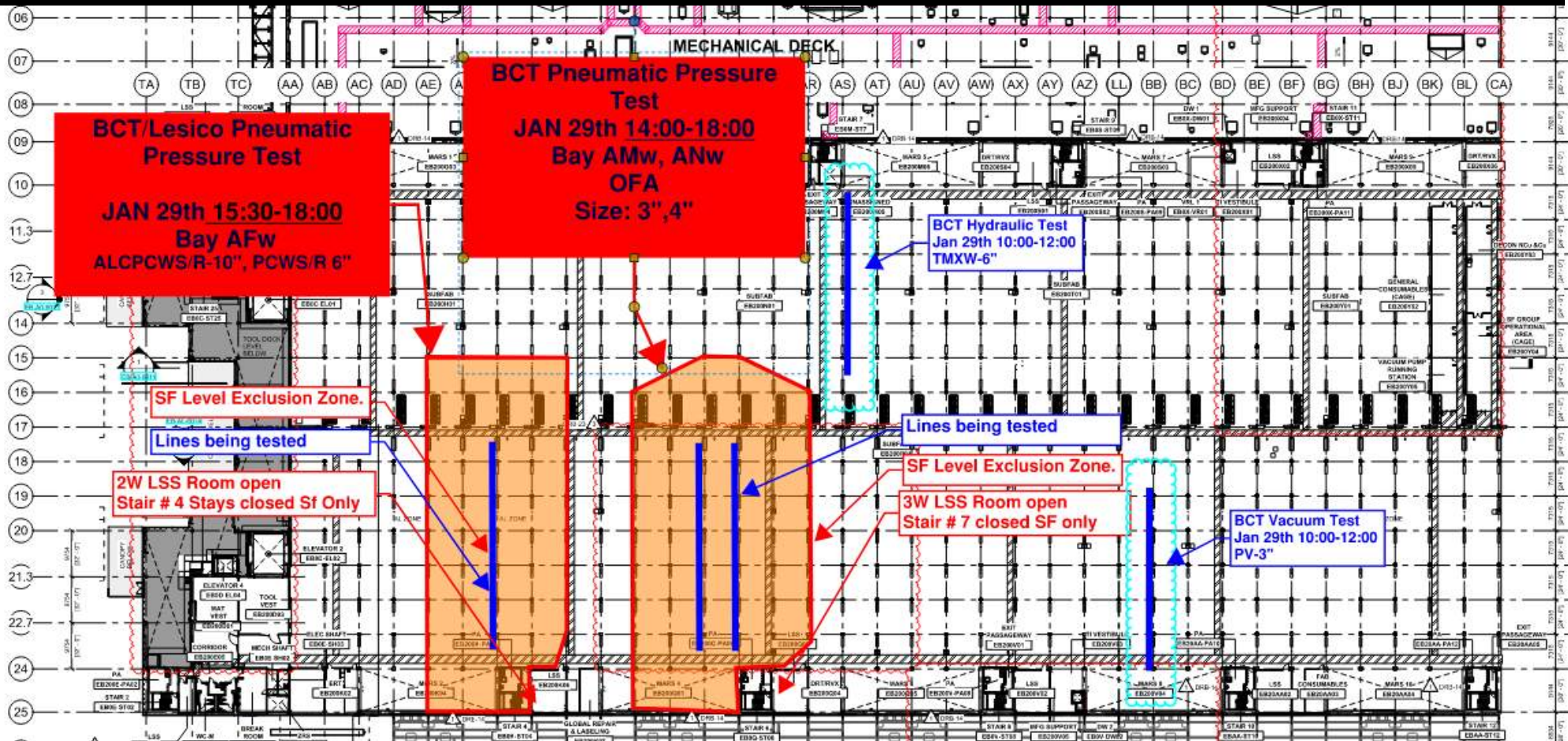


# SUBFAB CRC TOPCOAT



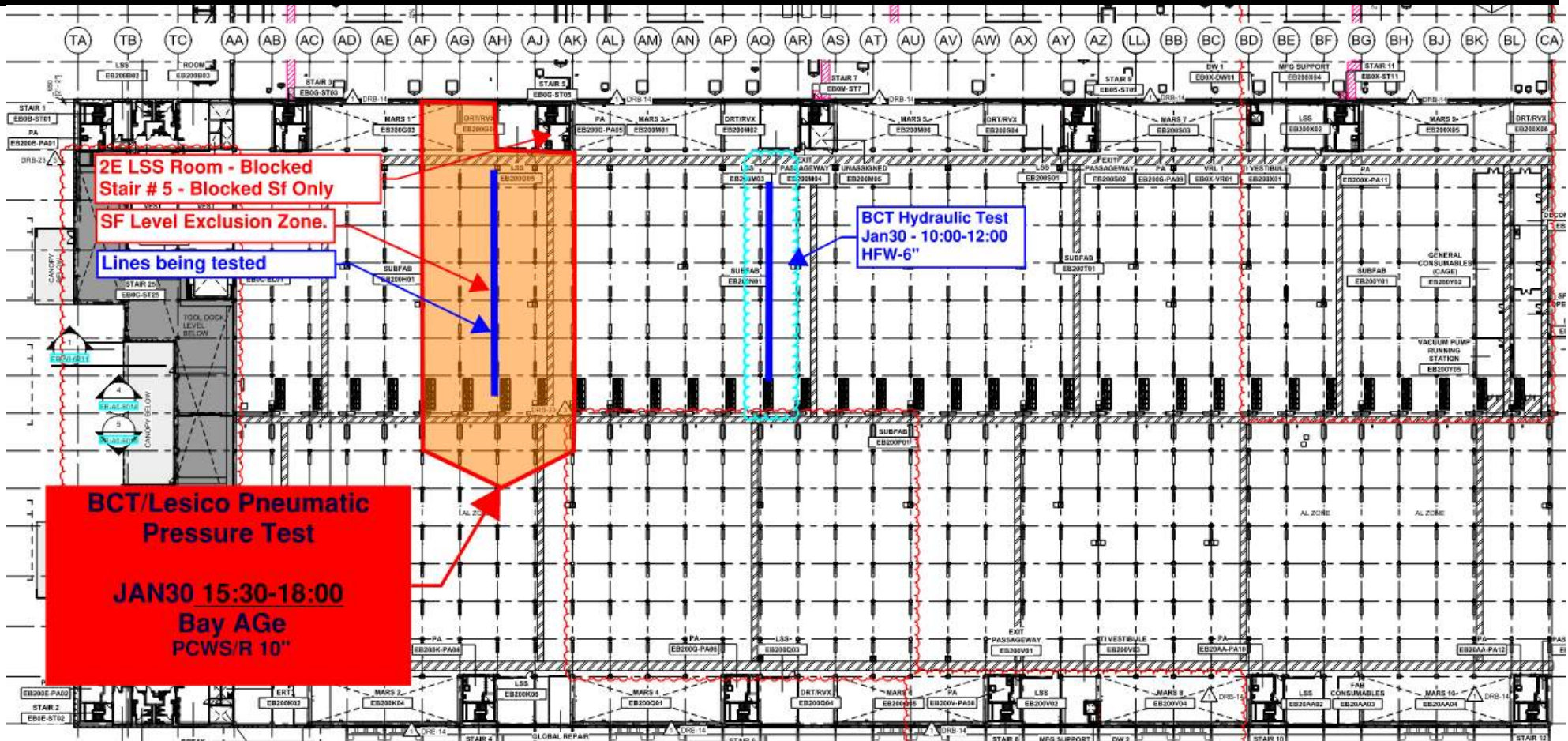


# BCT Pressure Test Today



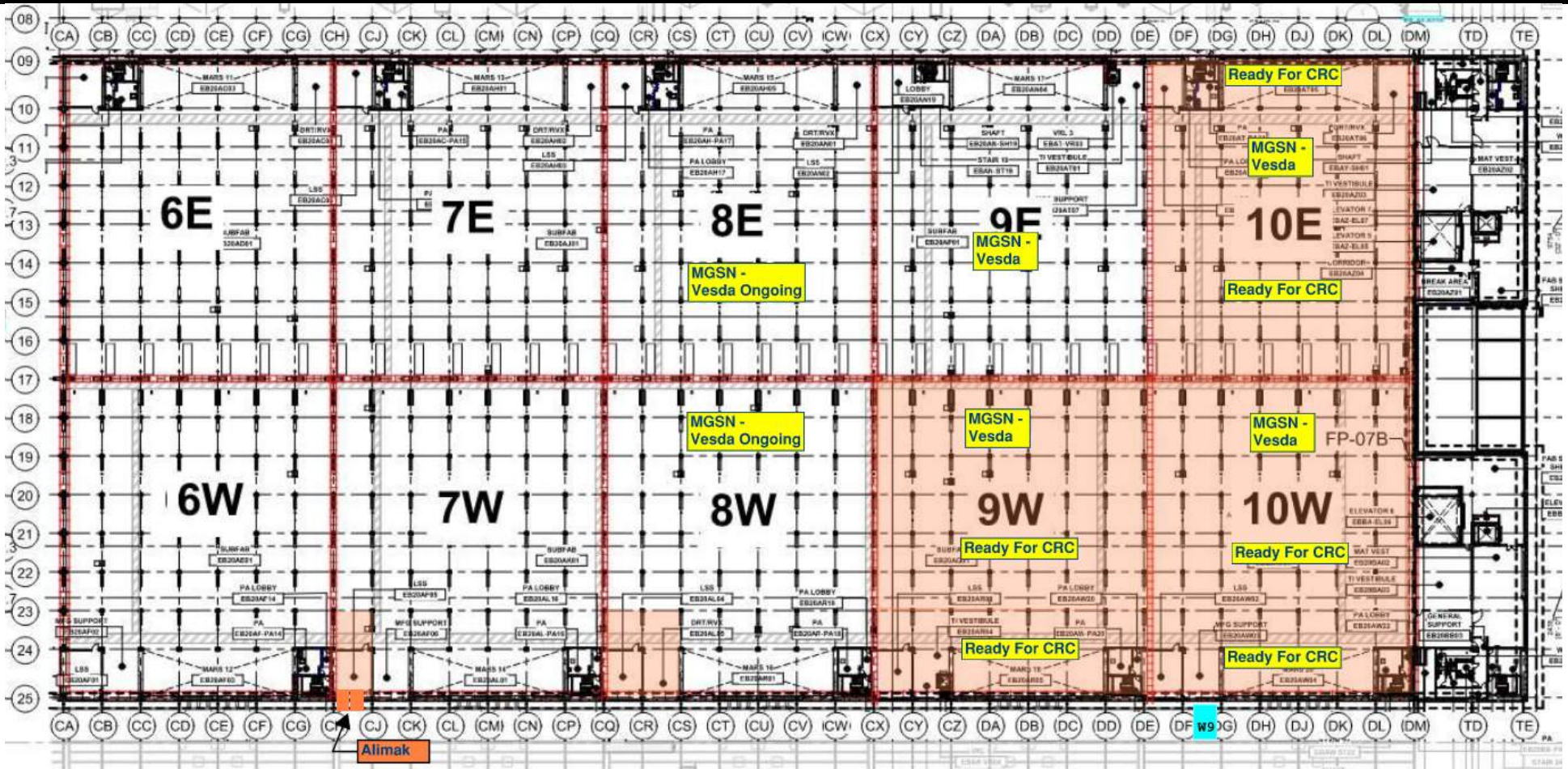


# BCT Pressure Test Tomorrow

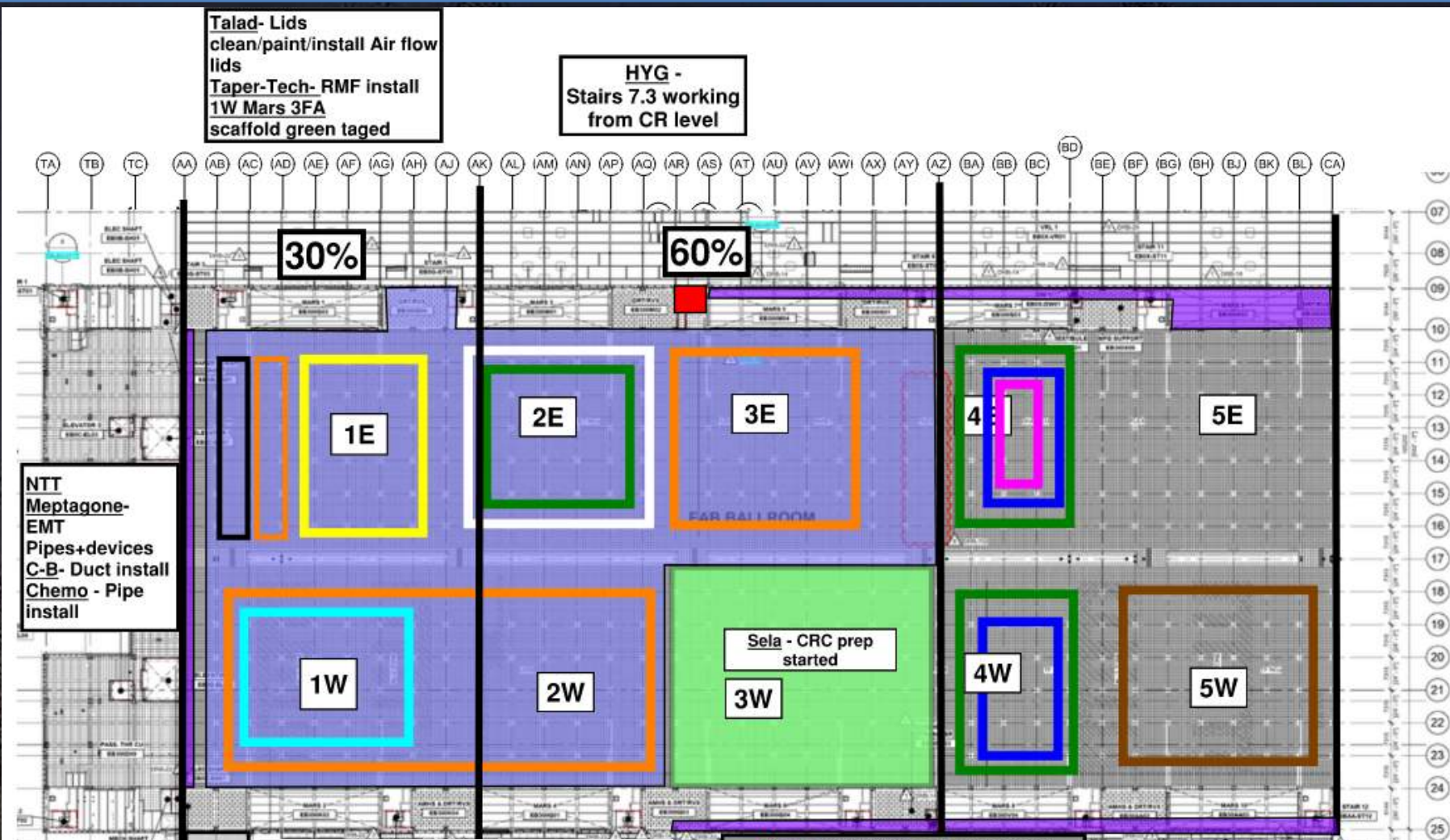




# SUBFAB BUILDOUT MOD 2







**Talad**- Lids  
clean/paint/install Air flow  
lids  
**Taper-Tech**- RMF install  
**1W Mars 3FA**  
scaffold green tagged

**HYG** -  
Stairs 7.3 working  
from CR level

**30%**

**60%**

**NTT**  
**Meptagone**-  
**EMT**  
Pipes+devices  
**C-B**- Duct install  
**Chemo** - Pipe  
install

**Sela** - CRC prep  
started

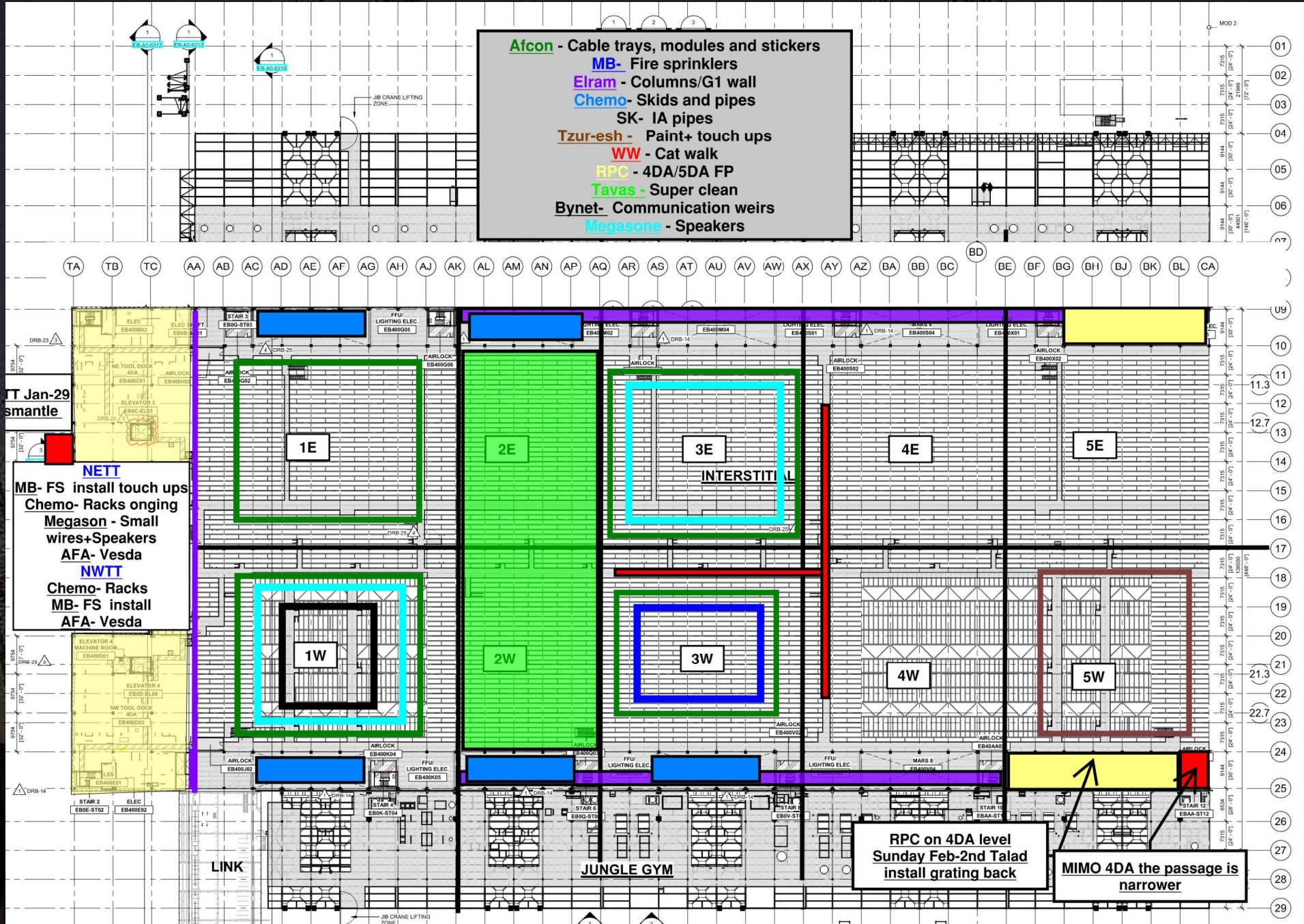
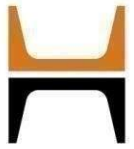
Link-mobile scaffold  
moved to seq.#8  
Next movement on feb  
10<sup>th</sup> to seq#6,5,4,3 for  
d@p blades drilling.

**Atcon** - Cable trays, modules and  
stickers  
**MB**- Pipes and drops  
**Elram** - Columns/shaft walls/G1 wall  
**Meptagone** - I&C+ Zero ref. pipes  
**D&P** - Stick build+ separation  
walls+FFU  
**Tzur-esh** - 1W blade paint  
**HYG** - Stairs 7.3 starts WW04  
**Talad** - UPN install, ceiling grid, lids  
removal  
**Talent** - Super clean  
**Taper-Tech** - RMF  
**Talent** - Super clean

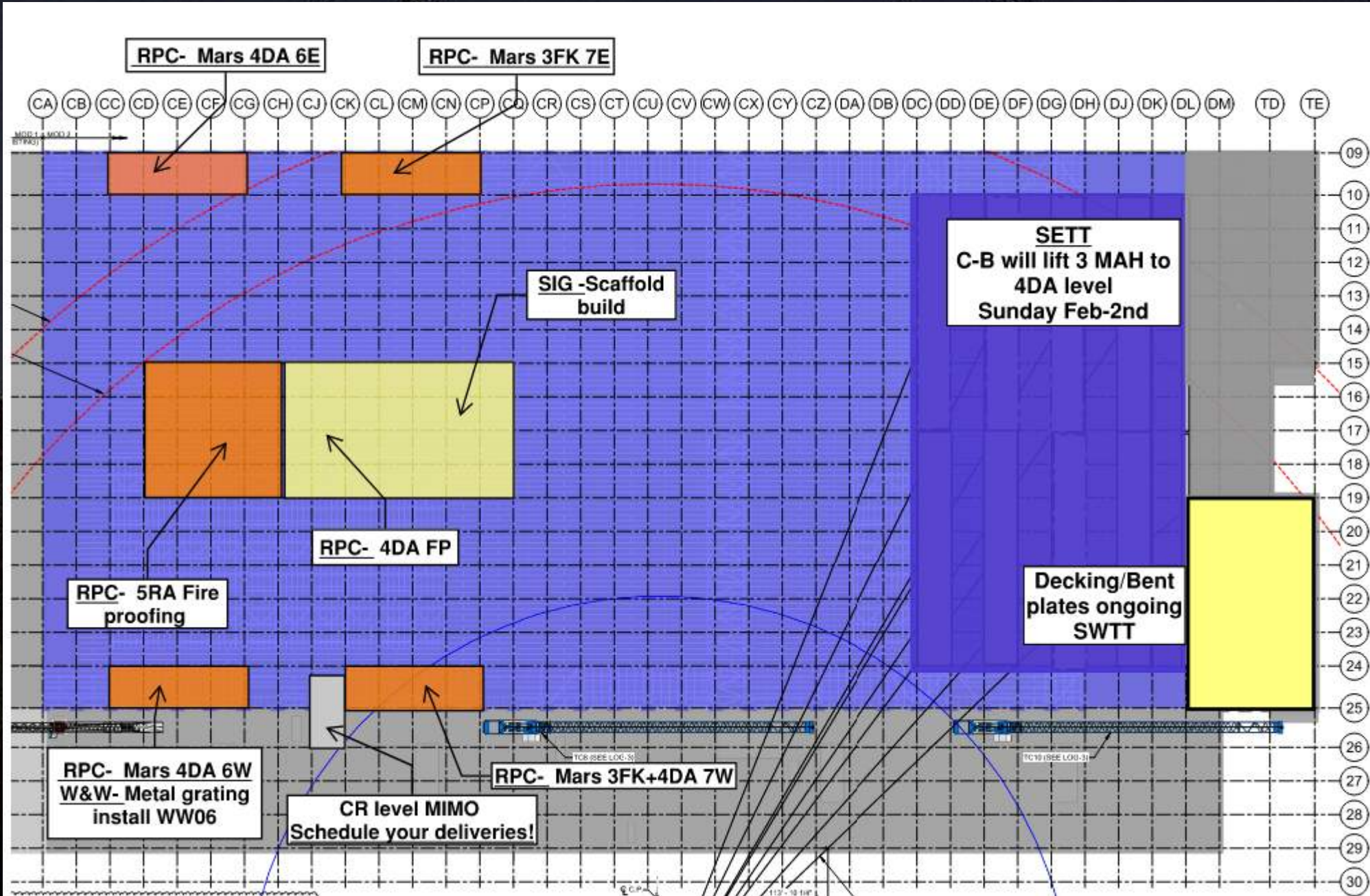








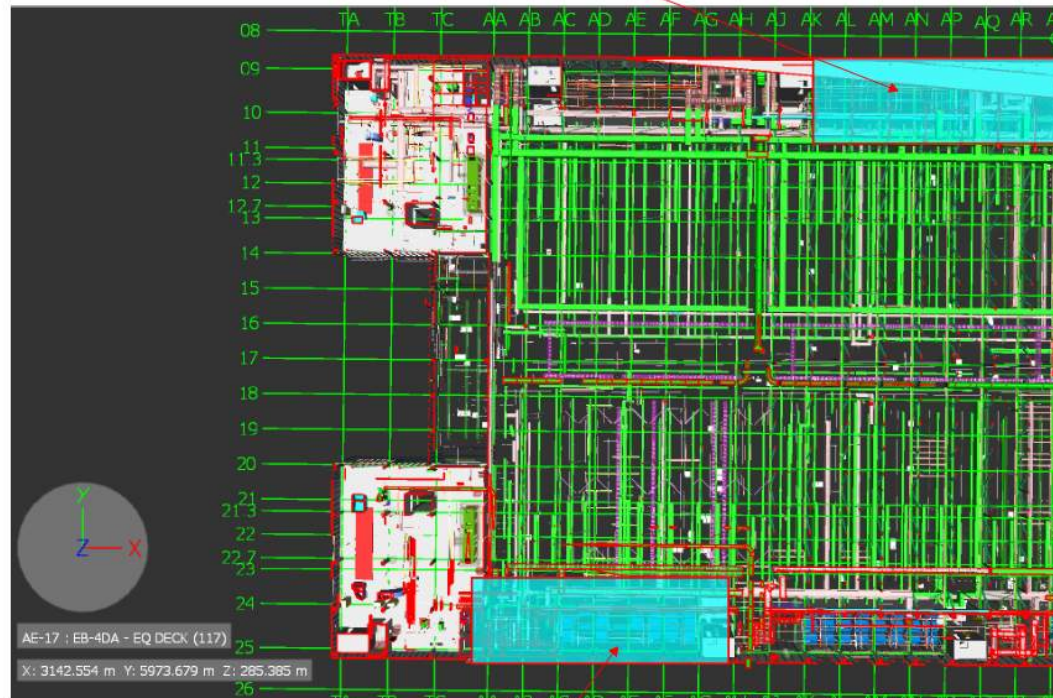




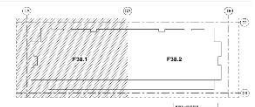
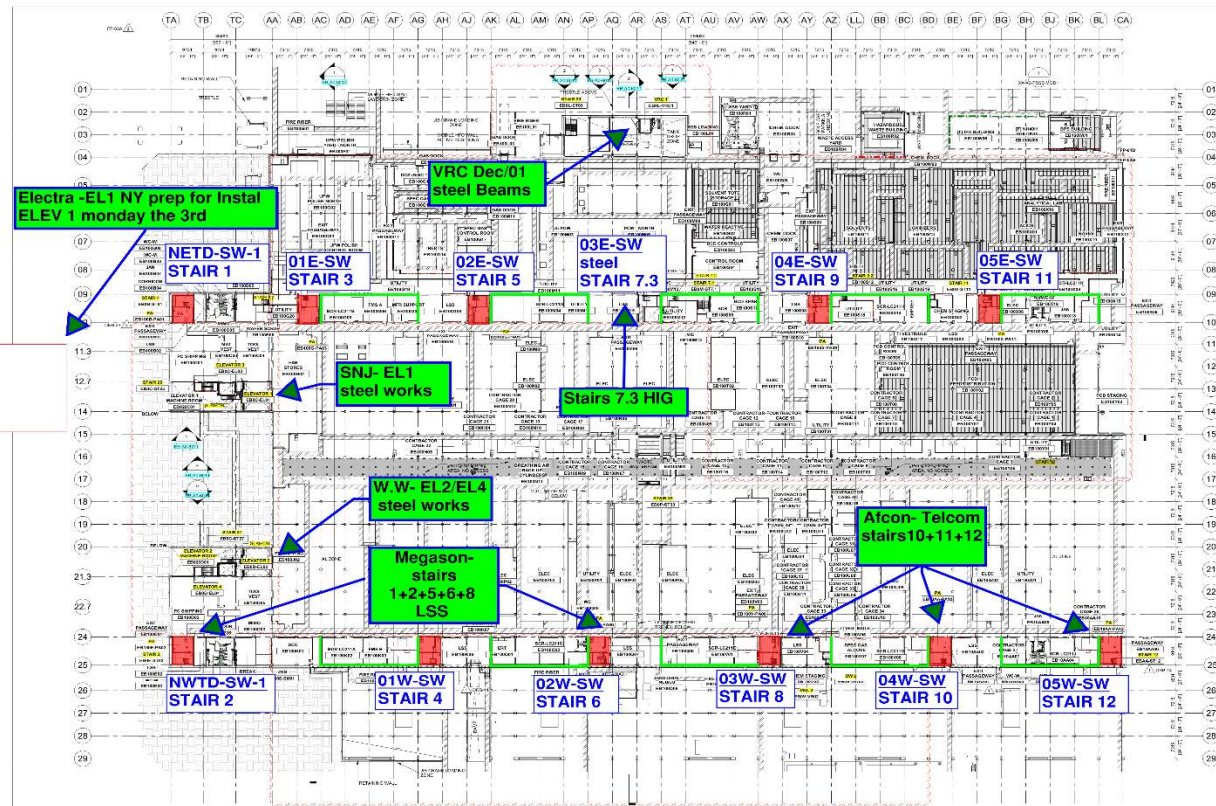


Chemo Aharon will perform two test on UPN 113, tomorrow at 5 PM

**MARS (3) at zone 2E at the CR, will will also effect on small portion from zone 1P lift 2**



**MARS (2) at zone 1W at the CR, will will also effect on small portion from zone 1J lift 2**



F38  
KEY PLAN

- GENERAL NOTES**
1. THE CONTRACTOR SHALL BE RESPONSIBLE FOR OBTAINING ALL NECESSARY PERMITS AND APPROVALS FROM THE LOCAL AUTHORITIES AND THE LOCAL FIRE DEPARTMENT.
  2. THE CONTRACTOR SHALL BE RESPONSIBLE FOR OBTAINING ALL NECESSARY PERMITS AND APPROVALS FROM THE LOCAL AUTHORITIES AND THE LOCAL FIRE DEPARTMENT.
  3. THE CONTRACTOR SHALL BE RESPONSIBLE FOR OBTAINING ALL NECESSARY PERMITS AND APPROVALS FROM THE LOCAL AUTHORITIES AND THE LOCAL FIRE DEPARTMENT.
  4. THE CONTRACTOR SHALL BE RESPONSIBLE FOR OBTAINING ALL NECESSARY PERMITS AND APPROVALS FROM THE LOCAL AUTHORITIES AND THE LOCAL FIRE DEPARTMENT.
  5. THE CONTRACTOR SHALL BE RESPONSIBLE FOR OBTAINING ALL NECESSARY PERMITS AND APPROVALS FROM THE LOCAL AUTHORITIES AND THE LOCAL FIRE DEPARTMENT.
  6. THE CONTRACTOR SHALL BE RESPONSIBLE FOR OBTAINING ALL NECESSARY PERMITS AND APPROVALS FROM THE LOCAL AUTHORITIES AND THE LOCAL FIRE DEPARTMENT.
  7. THE CONTRACTOR SHALL BE RESPONSIBLE FOR OBTAINING ALL NECESSARY PERMITS AND APPROVALS FROM THE LOCAL AUTHORITIES AND THE LOCAL FIRE DEPARTMENT.
  8. THE CONTRACTOR SHALL BE RESPONSIBLE FOR OBTAINING ALL NECESSARY PERMITS AND APPROVALS FROM THE LOCAL AUTHORITIES AND THE LOCAL FIRE DEPARTMENT.
  9. THE CONTRACTOR SHALL BE RESPONSIBLE FOR OBTAINING ALL NECESSARY PERMITS AND APPROVALS FROM THE LOCAL AUTHORITIES AND THE LOCAL FIRE DEPARTMENT.
  10. THE CONTRACTOR SHALL BE RESPONSIBLE FOR OBTAINING ALL NECESSARY PERMITS AND APPROVALS FROM THE LOCAL AUTHORITIES AND THE LOCAL FIRE DEPARTMENT.

**KEYED NOTES:**

**ROOM TAG**

- ROOM TAG
- 1. ROOM TAGS SHALL BE PLACED IN THE CENTER OF EACH ROOM.
  - 2. ROOM TAGS SHALL BE PLACED IN THE CENTER OF EACH ROOM.
  - 3. ROOM TAGS SHALL BE PLACED IN THE CENTER OF EACH ROOM.
  - 4. ROOM TAGS SHALL BE PLACED IN THE CENTER OF EACH ROOM.
  - 5. ROOM TAGS SHALL BE PLACED IN THE CENTER OF EACH ROOM.
  - 6. ROOM TAGS SHALL BE PLACED IN THE CENTER OF EACH ROOM.
  - 7. ROOM TAGS SHALL BE PLACED IN THE CENTER OF EACH ROOM.
  - 8. ROOM TAGS SHALL BE PLACED IN THE CENTER OF EACH ROOM.
  - 9. ROOM TAGS SHALL BE PLACED IN THE CENTER OF EACH ROOM.
  - 10. ROOM TAGS SHALL BE PLACED IN THE CENTER OF EACH ROOM.

**LEGEND**

[Symbol]	CONCRETE
[Symbol]	STEEL
[Symbol]	GLASS
[Symbol]	WOOD
[Symbol]	MECHANICAL
[Symbol]	ELECTRICAL
[Symbol]	PLUMBING
[Symbol]	PAINT
[Symbol]	FINISH
[Symbol]	LANDSCAPE
[Symbol]	ASPHALT
[Symbol]	GRAVEL
[Symbol]	SOIL
[Symbol]	WATER
[Symbol]	SEWER
[Symbol]	TELEPHONE
[Symbol]	CABLE
[Symbol]	POWER
[Symbol]	GROUND
[Symbol]	ROOF
[Symbol]	FOUNDATION
[Symbol]	RETAINING WALL
[Symbol]	CONCRETE
[Symbol]	STEEL
[Symbol]	GLASS
[Symbol]	WOOD
[Symbol]	MECHANICAL
[Symbol]	ELECTRICAL
[Symbol]	PLUMBING
[Symbol]	PAINT
[Symbol]	FINISH
[Symbol]	LANDSCAPE
[Symbol]	ASPHALT
[Symbol]	GRAVEL
[Symbol]	SOIL
[Symbol]	WATER
[Symbol]	SEWER
[Symbol]	TELEPHONE
[Symbol]	CABLE
[Symbol]	POWER
[Symbol]	GROUND
[Symbol]	ROOF
[Symbol]	FOUNDATION
[Symbol]	RETAINING WALL

**Jacobs**  
ISRAEL - FCE

**intel**

LC21 - ARCHITECTURAL  
UTILITY LEVEL - 1YA  
OVERALL  
FLOOR PLAN

EB-AS-1YA-A0A00



Siding - West FAB - JYG

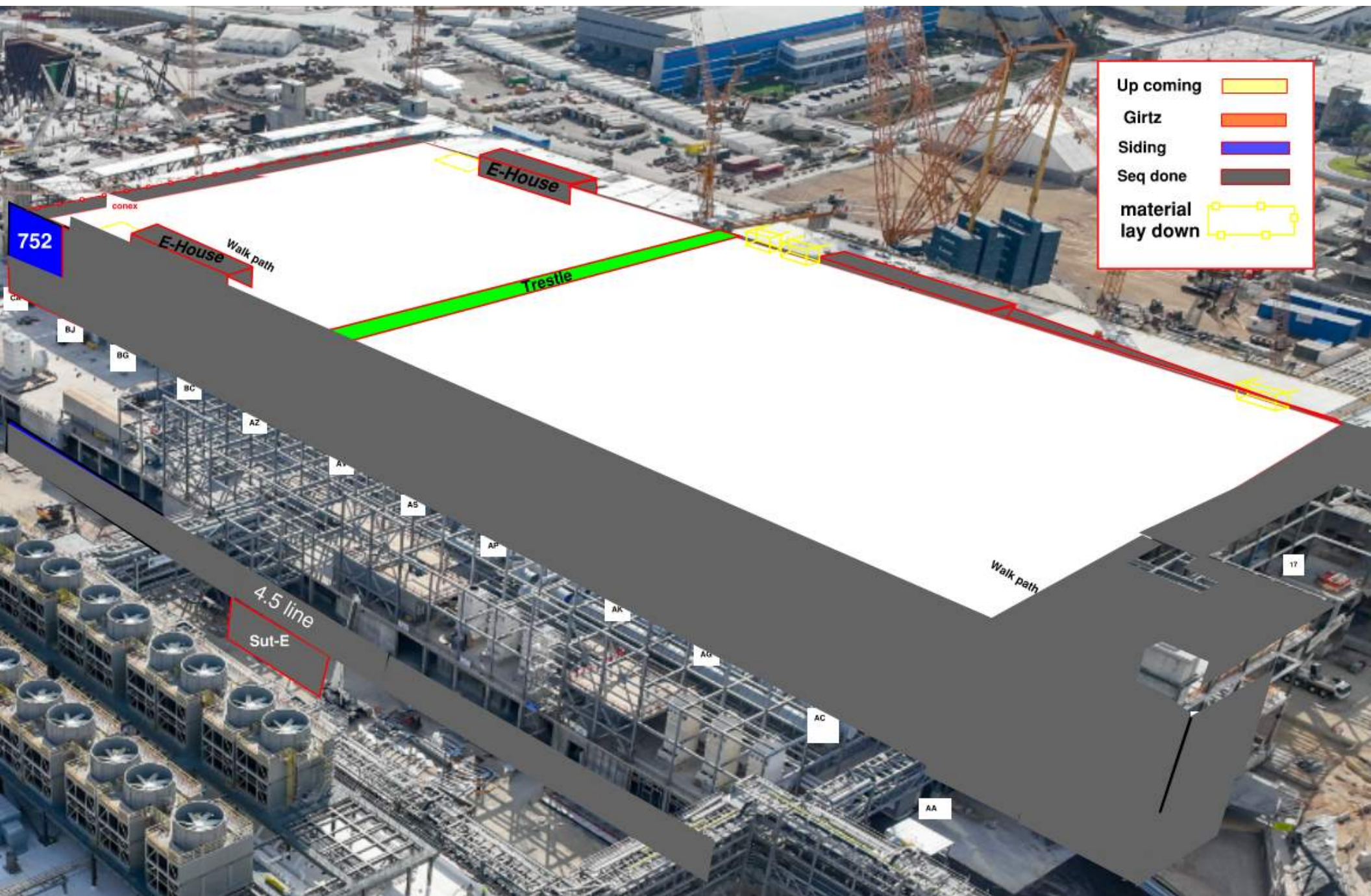
BLOWDOWN 30%

	TA	TB	TC	AA	AB	AC	AD	AE	AF	AG	AH	AI	AJ	AK	AL	AM	AN	AO	AP	AQ	AR	AS	AT	AU	AV	AW	AX	AY	AZ	BA	BB	BC	BD	BE	BF	BG	BH	BI	BJ	BK	BL	CA							
Totol	20	20	20	10	10	21	21	21	21	21	21	21	21	21	20	21	21	21	21	21	21	21	21	21	21	21	21	21	21	21	21	21	21	21	21	21	21	21	21	21	21	21	21	21					
Installed	20	20	27	15	10	21	21	21	21	21	21	21	21	21	20	21	21	21	21	21	21	21	21	21	21	21	21	21	21	21	21	21	21	21	21	21	21	21	21	21	21	21	21	21	21	21			
%	100%	100%	96%	100%	100%	100%	100%	100%	100%	100%	100%	100%	100%	100%	100%	100%	100%	100%	100%	100%	100%	100%	100%	100%	100%	100%	100%	100%	100%	100%	100%	100%	100%	100%	100%	100%	100%	100%	100%	100%	100%	100%	100%	100%	100%	100%	100%		
ERA																																																	
HDA																																																	
ZPK																																																	
ZFA																																																	
ZSA ZF																																																	
UL																																																	

Link







Up coming	
Girtz	
Siding	
Seq done	
material lay down	

752

E-House

E-House

Trestle

Walk path

Walk path

4.5 line  
Sut-E

BJ

BG

BC

AZ

AV

AS

AP

AK

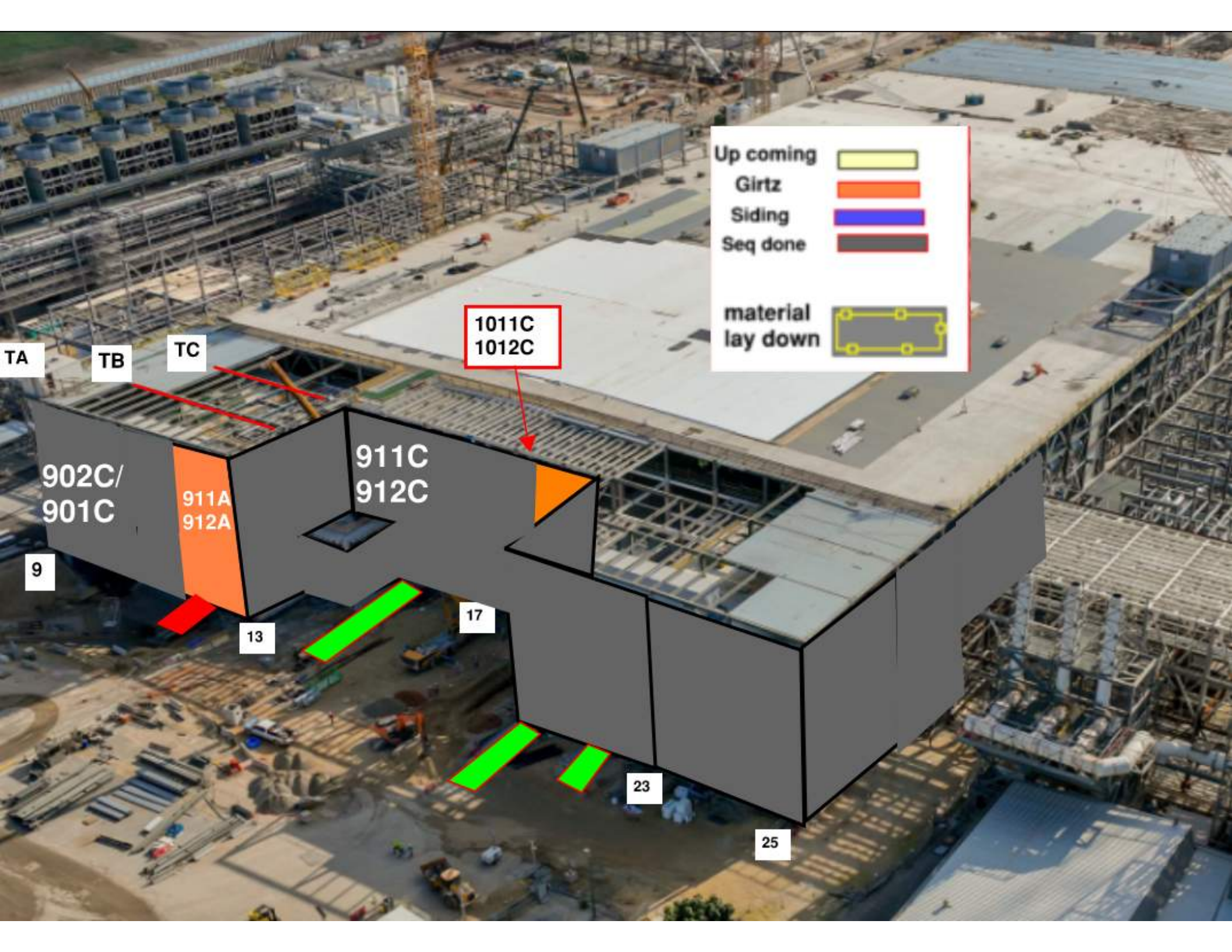
AG

AC

AA

17





Up coming



Girtz



Siding



Seq done



material  
lay down



1011C  
1012C

TC

TB

TA

902C/  
901C

911A  
912A

911C  
912C

9

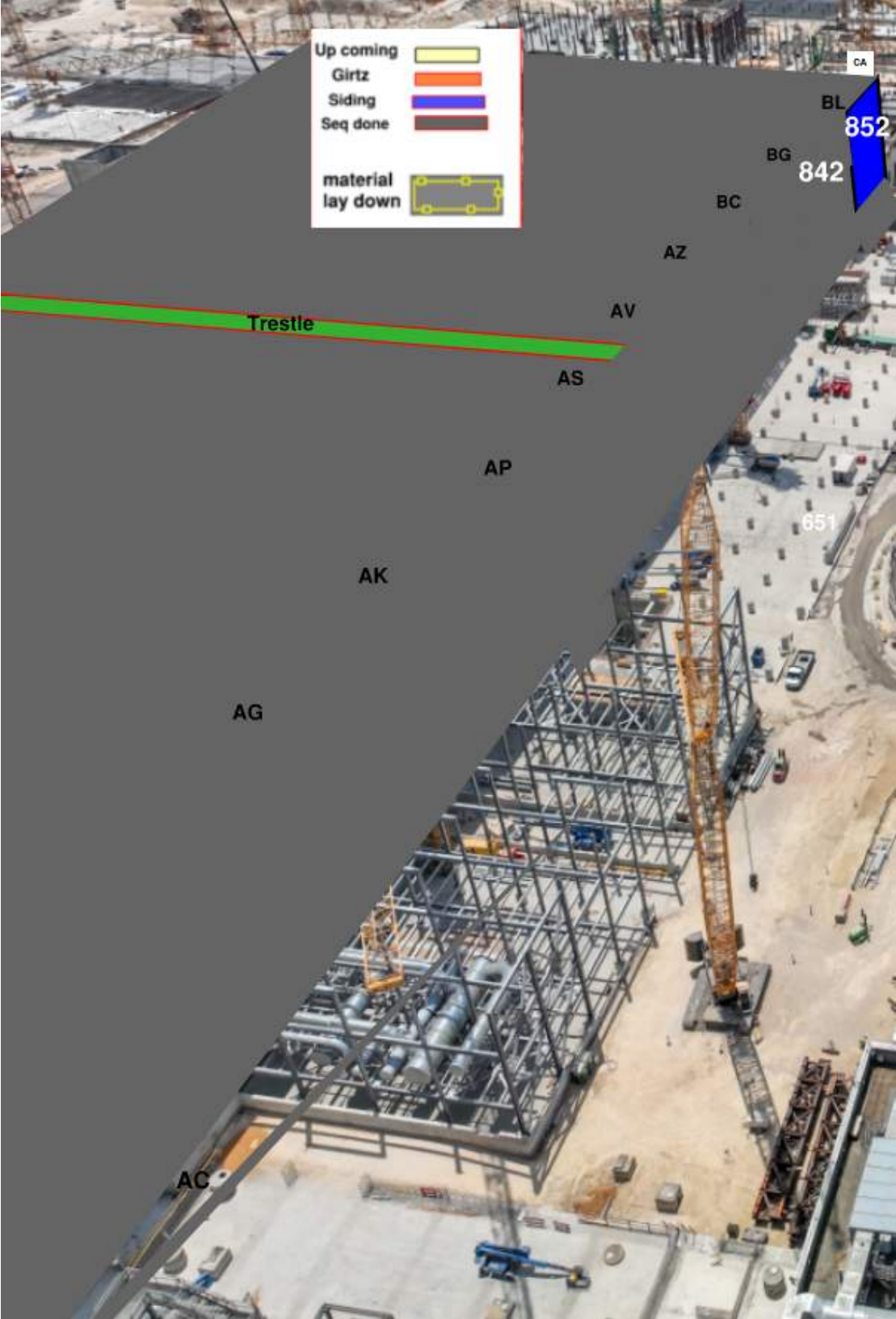
13






17

23

25





Up coming	
Girtz	
Siding	
Seq done	
material lay down	

CA

BL

852

BG

842

BC

AZ

AV

AS

AP

AK

AG

AC

Trestle

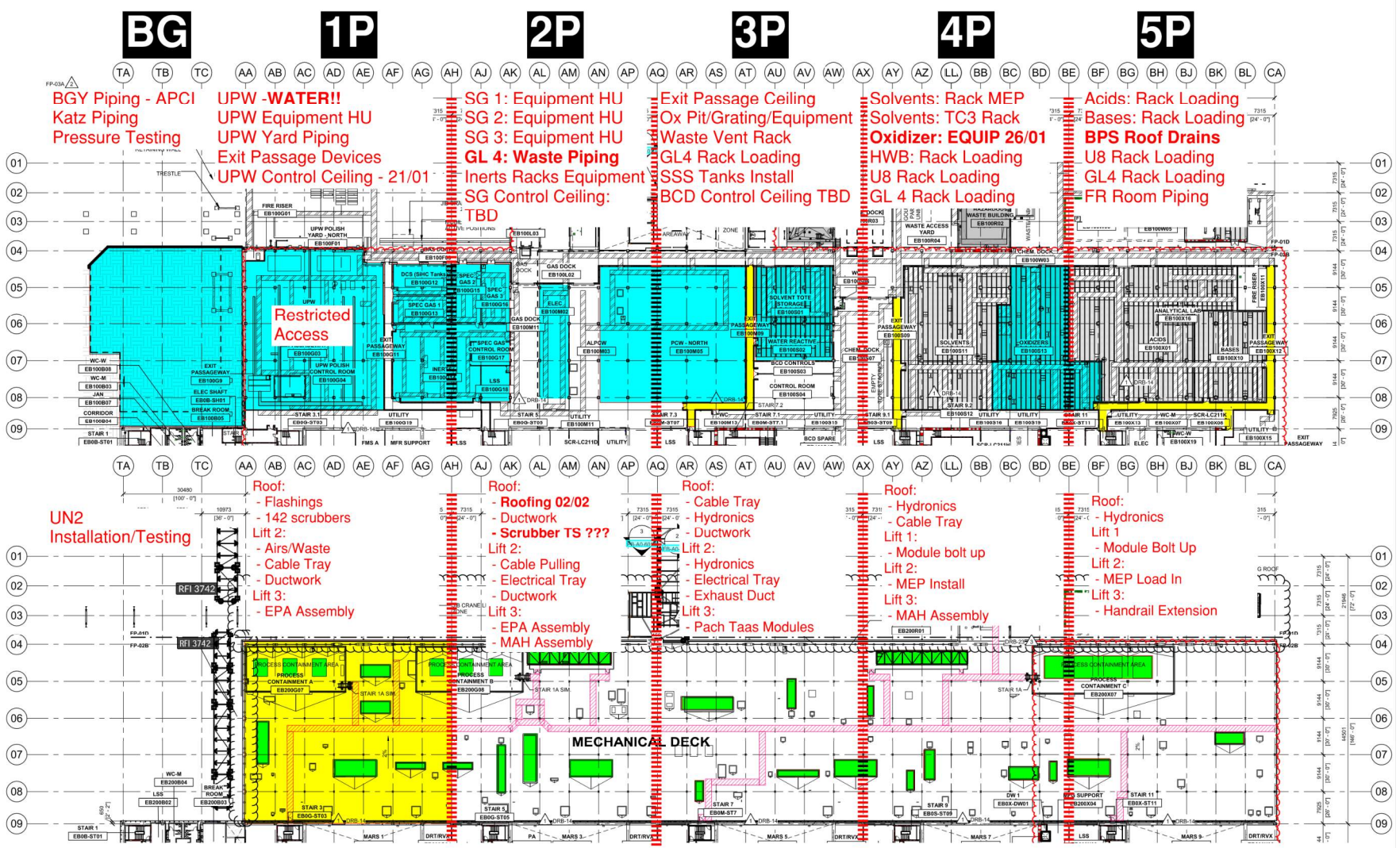
651



# PSSS.1

## Utility Level 1YA

## PSSS Roof 2SA





# PSSS.2

6P

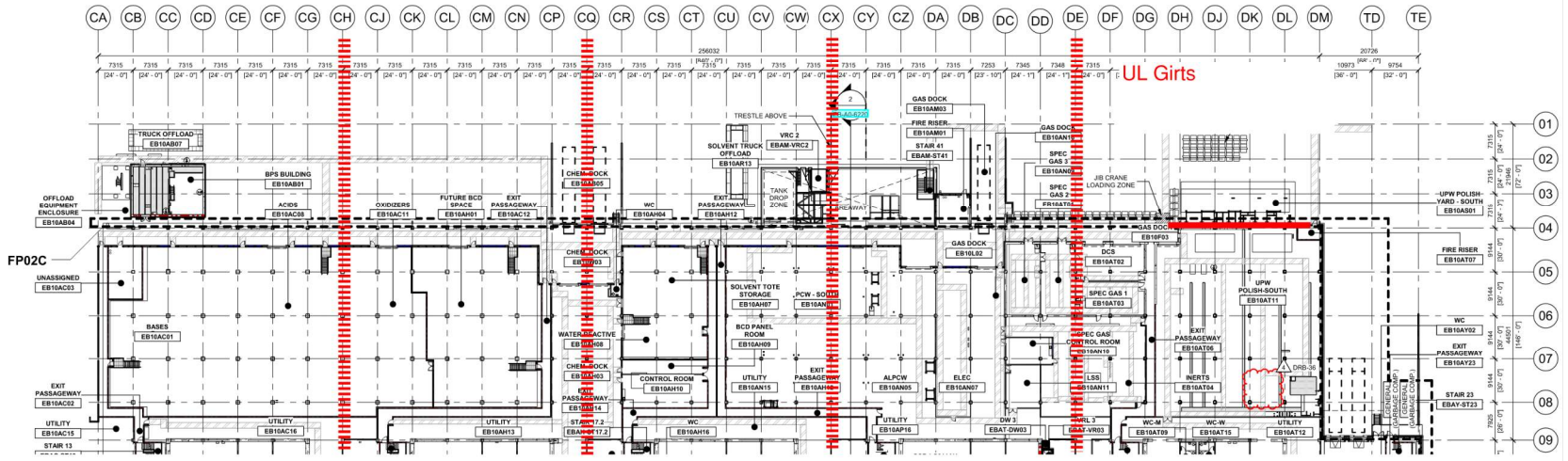
7P

8P

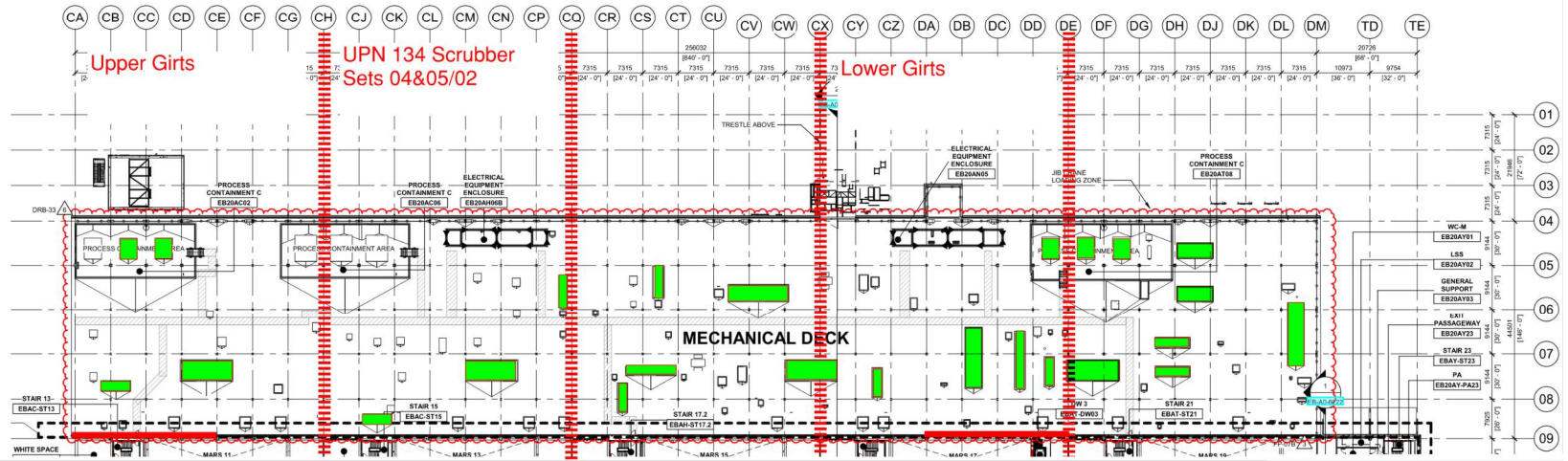
9P

10P

Utility Level  
1YA



PSSS Roof  
2SA

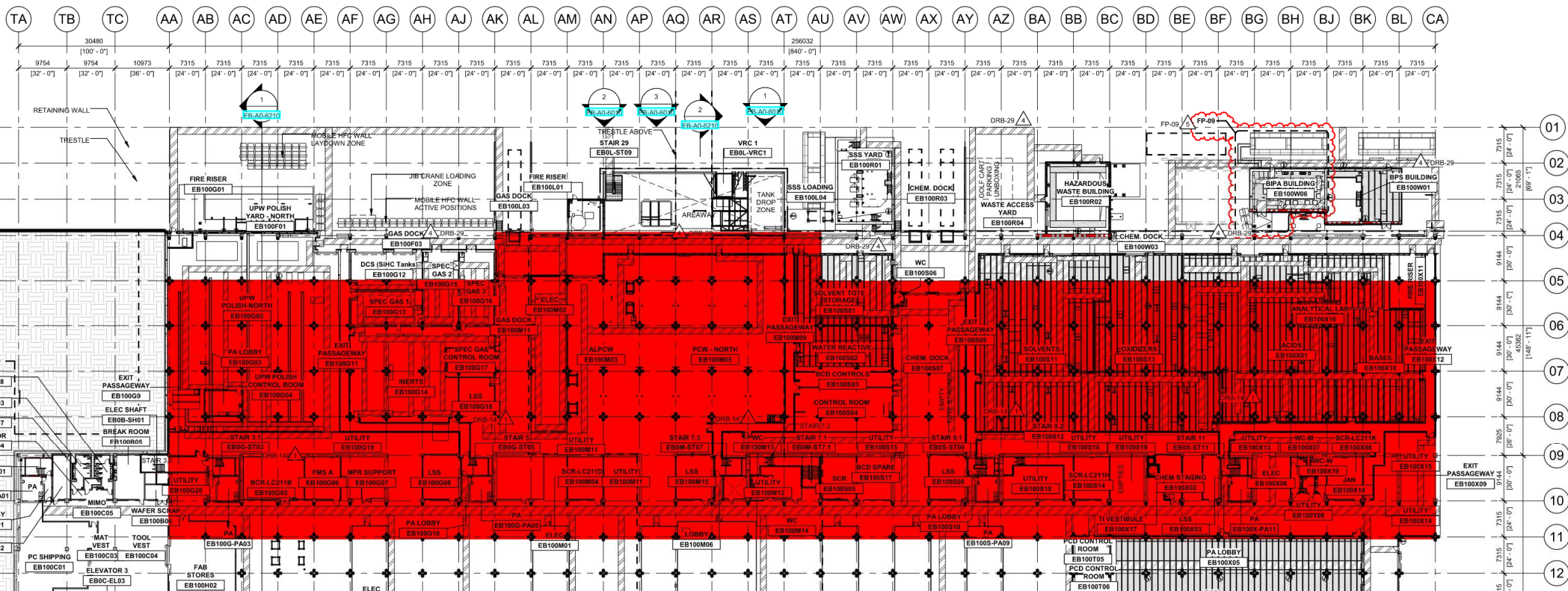




# UN2 U8 Pressure Test 29/01

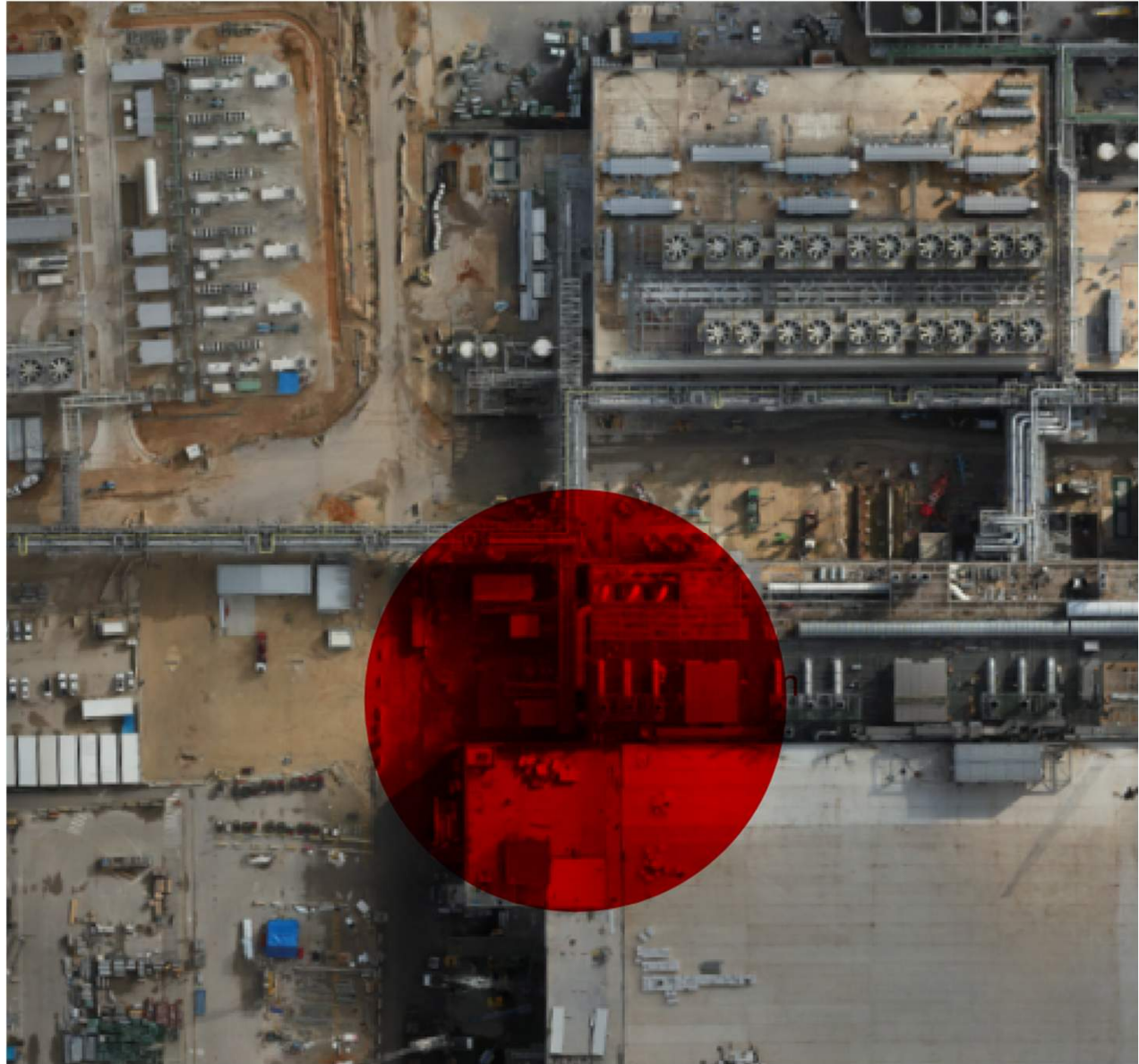
17:00-05:00

# FP Pressure Test 17:00-20:00





H2 Vent  
Radiographic  
Test  
30/01  
17:00-01:00





GN2

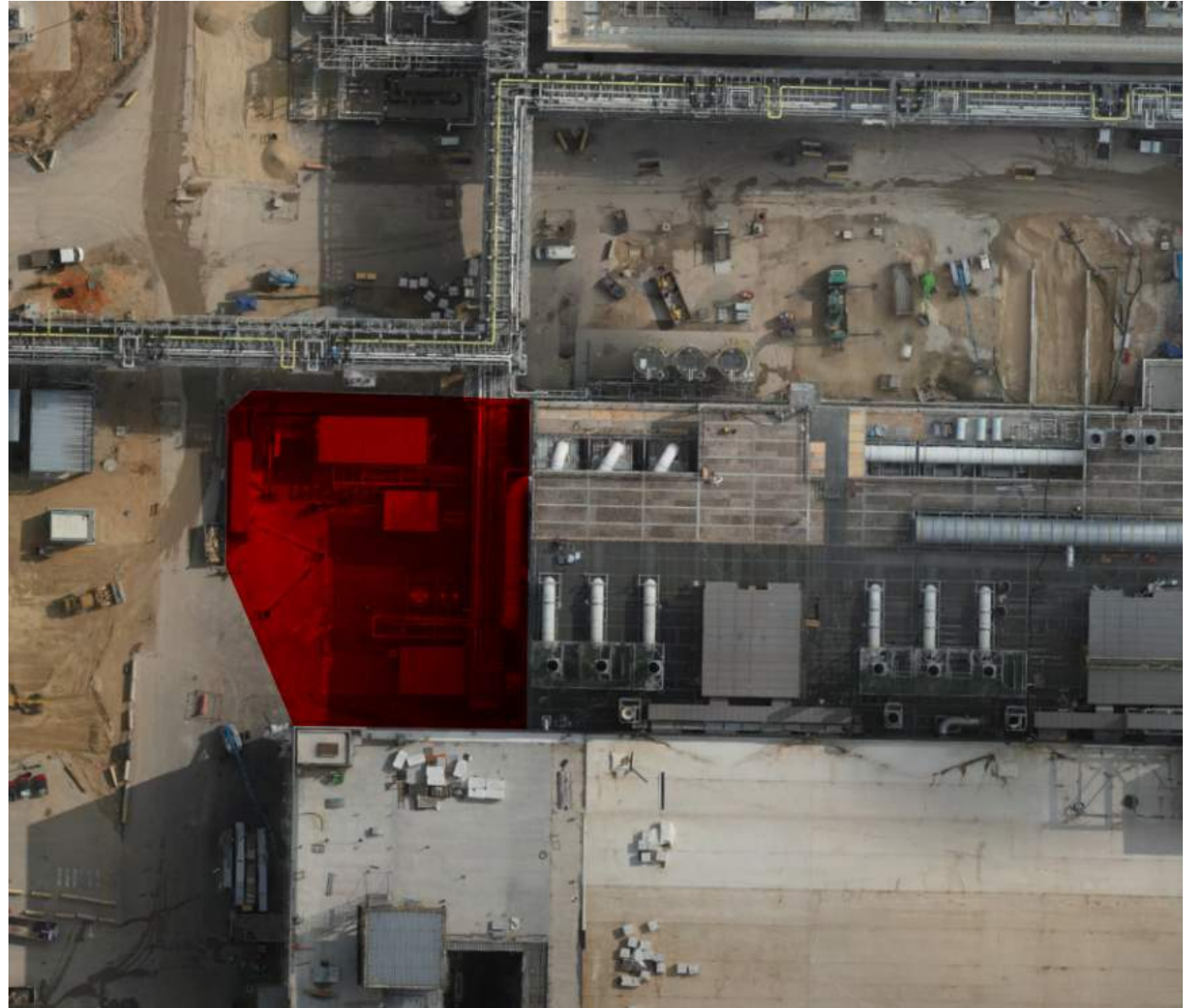
Analytical

BGY Closed

30/01 @12:00

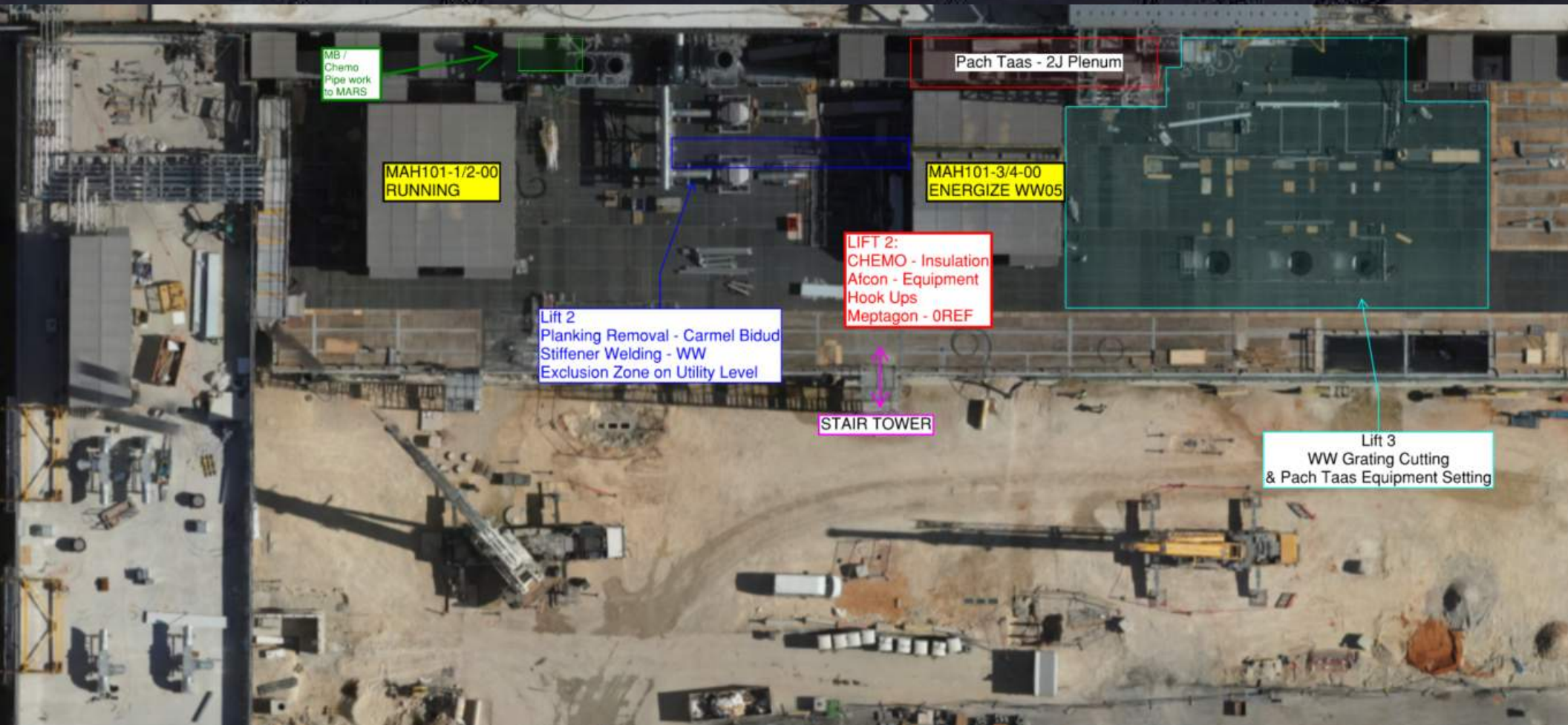
to 02/02 @

23:59



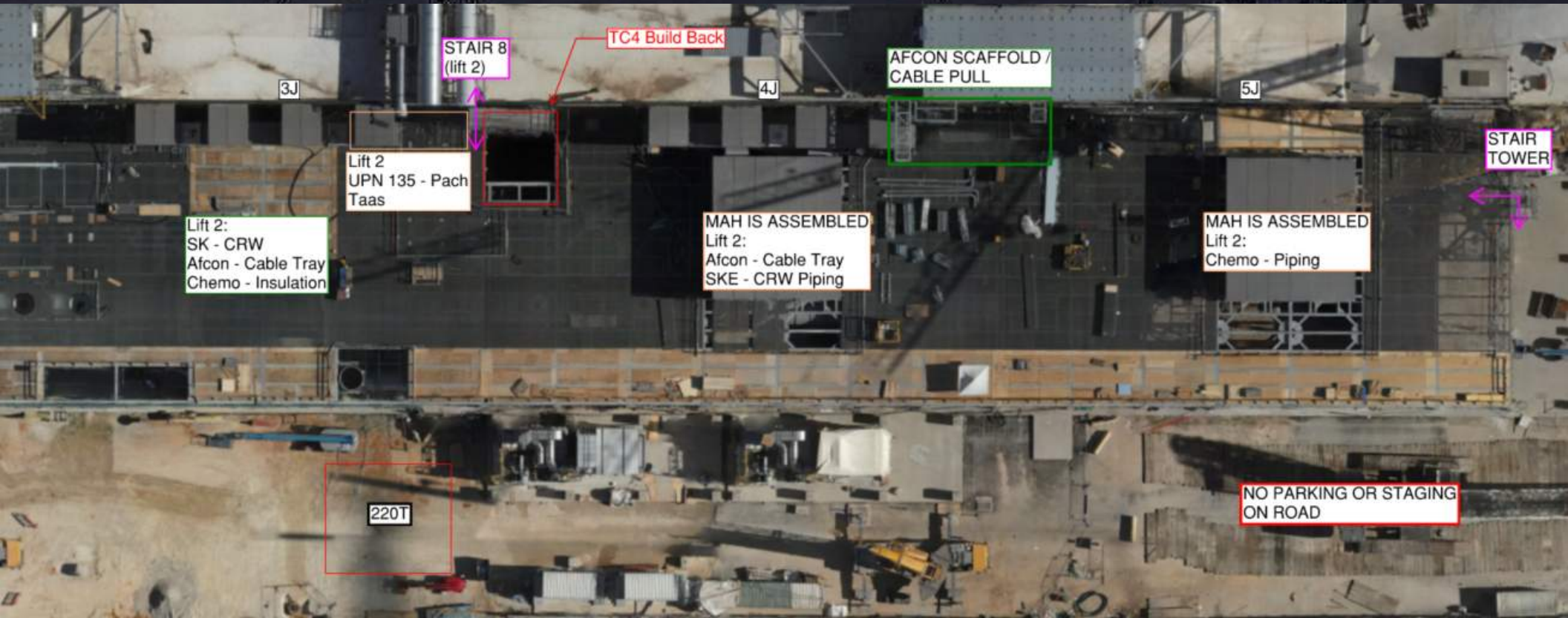


# WJG 01J, 02J LIFT 2 & 3



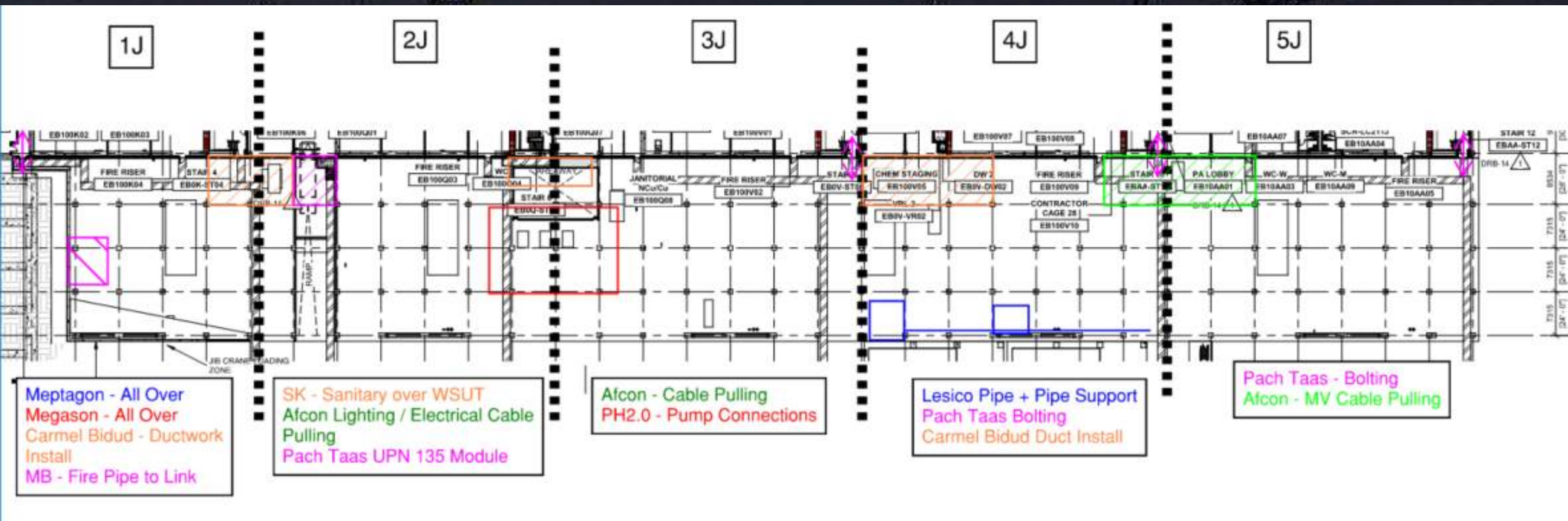


# WJG 03J, 04J, 05J LIFT 2 & 3



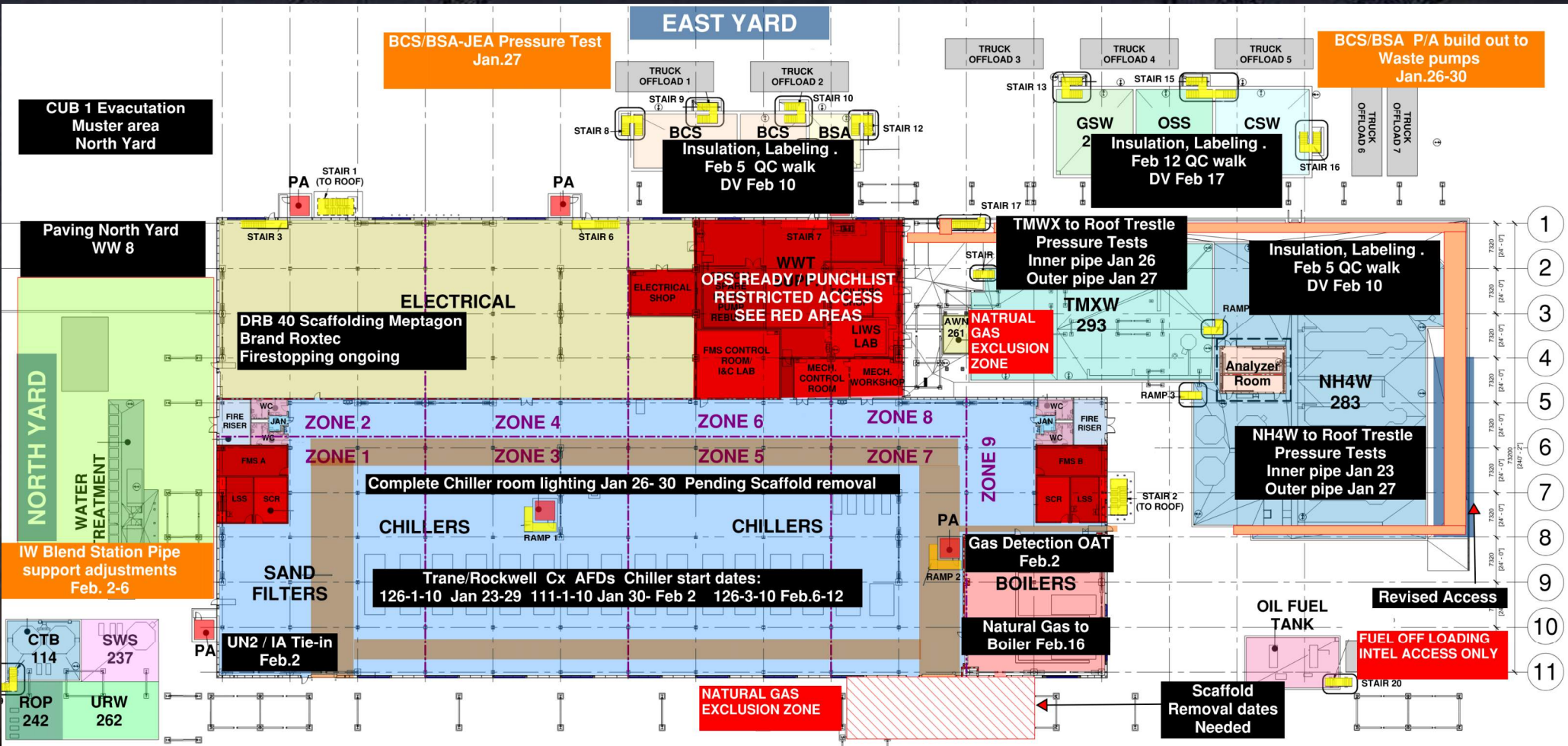


# WJG UTILITY LEVEL BUILD OUT



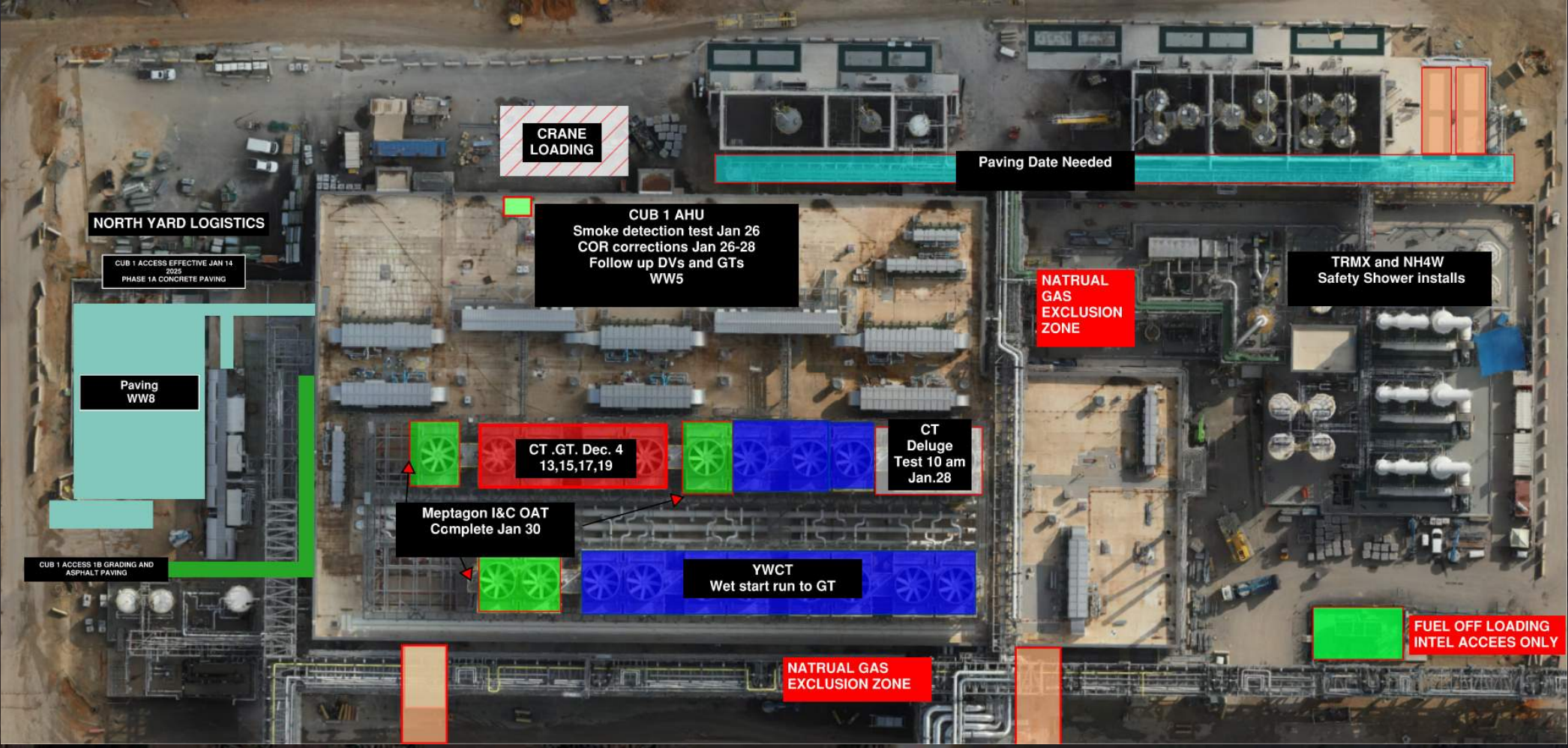


# CUB 1



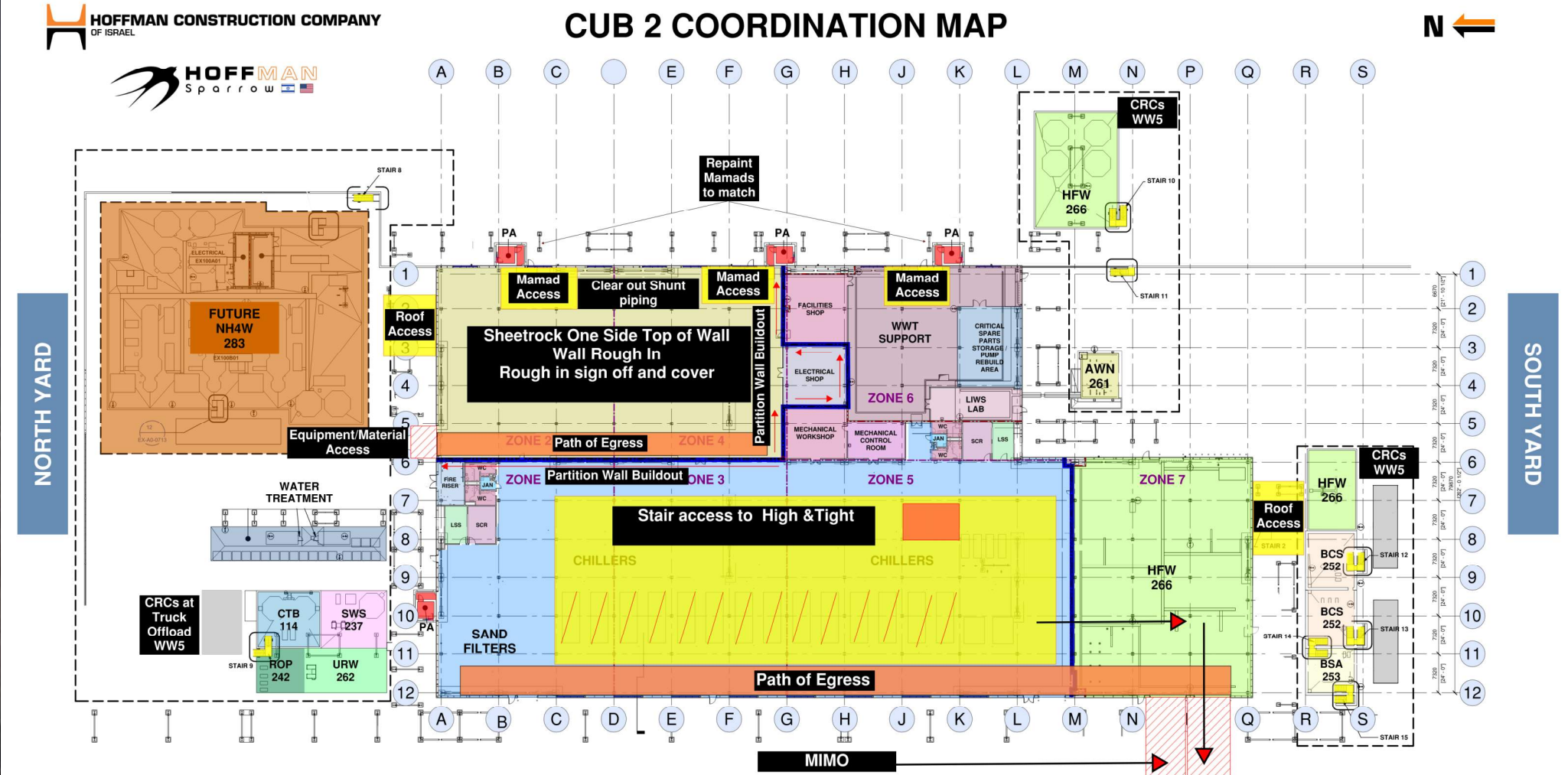


# CUB 1 – EXTERIOR/ROOF





# CUB 2- Load in ,H&T, Framing and Sheetrock

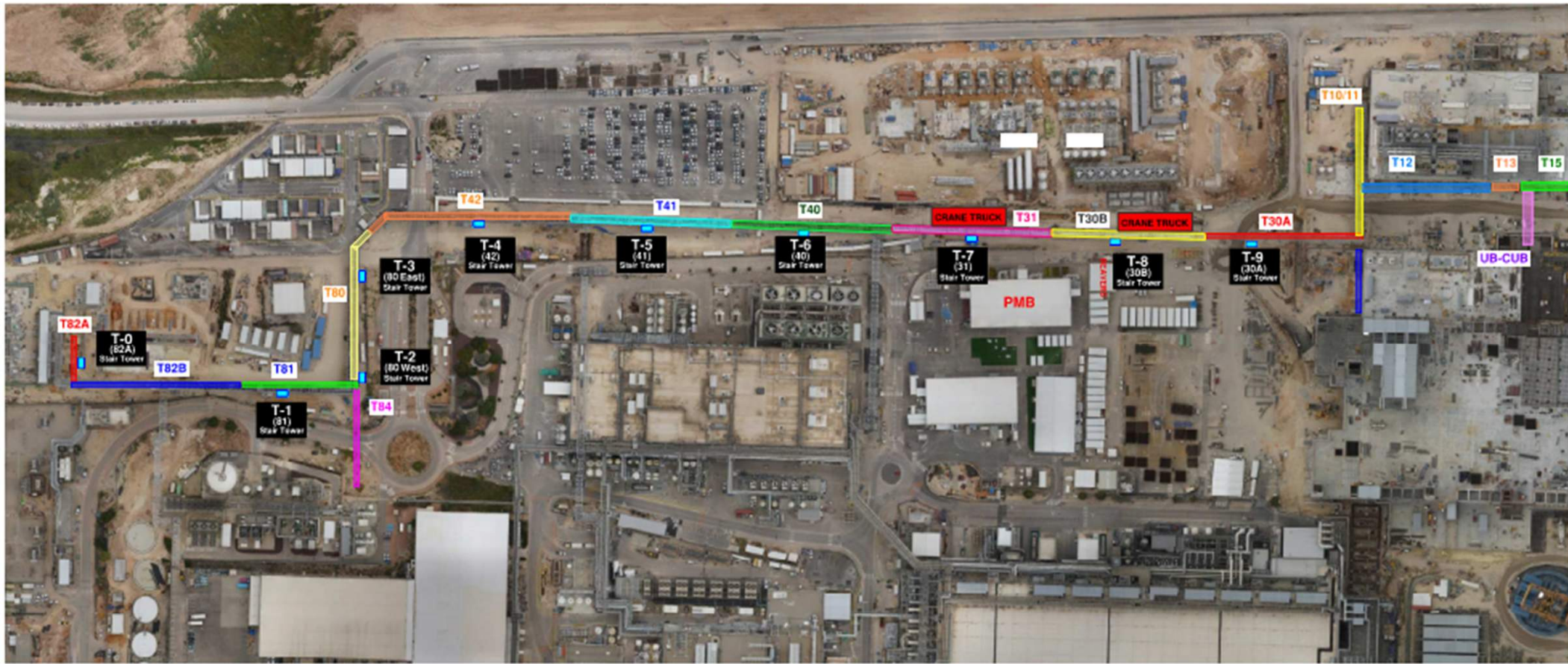




# CUB 2 – EXTERIOR/ROOF









# Daily Coordination Meeting

Site Logistics

North Entry







# Daily Coordination Meeting

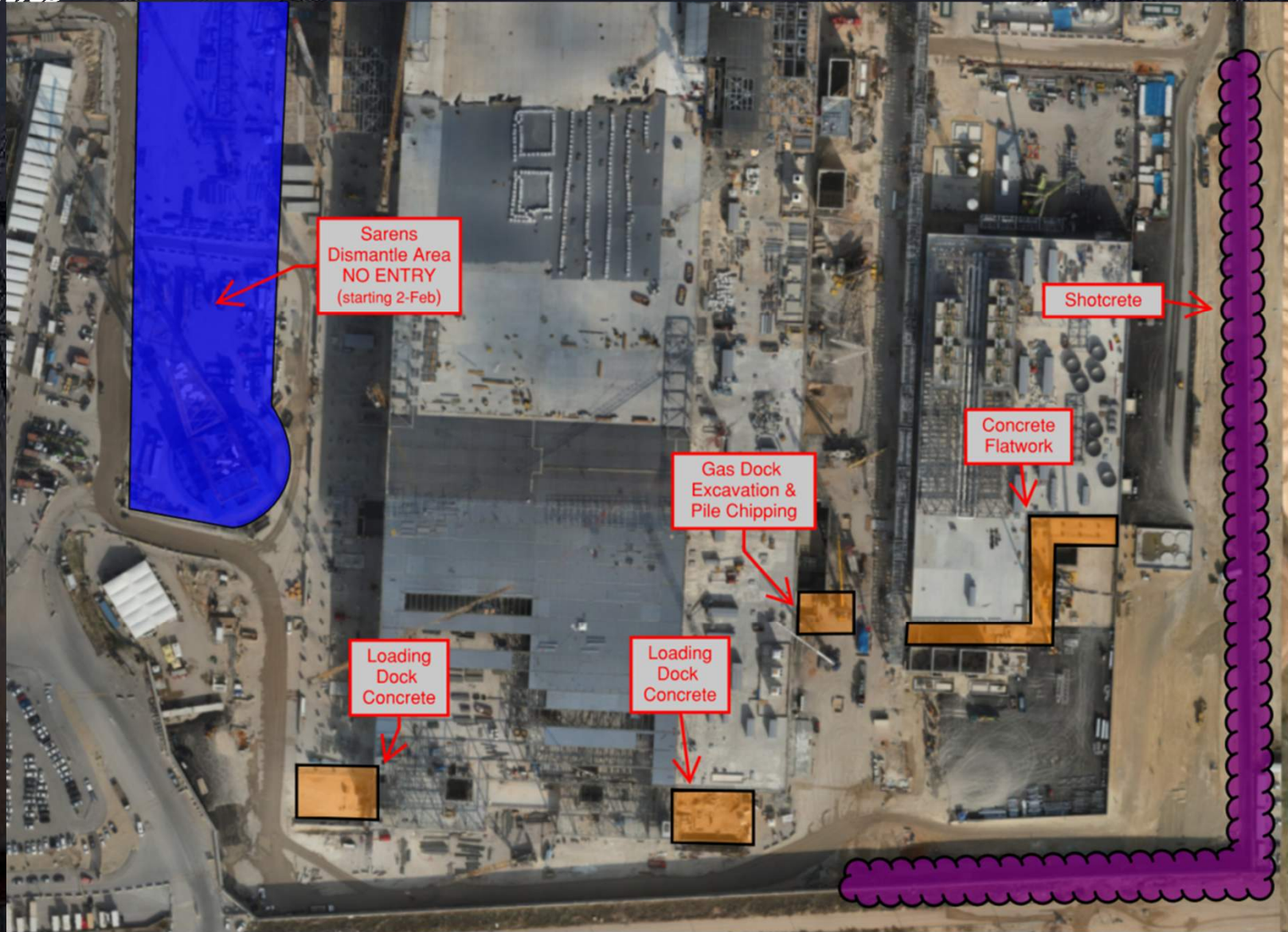
Site Logistics  
North





# Daily Coordination Meeting

Site Logistics  
South





# SEE SOMETHING, SAY SOMETHING, DO SOMETHING

- All leaders on this project are responsible for communicating, escalating, and stopping unsafe acts.
- If you see a worker without their PPE on, regardless of what company they work for- say something!
- If you see a tripping hazard that you can safely move- do something!
- If you see a colleague talking on their phone while walking through the site or while in an active work zone- say something.
- Leadership cannot be passive in raising the bar across the job site.
- If you are seeing something that you don't know how to handle, escalate it to Hoffman. But please, do not be silent.



# HCC/EHS Weekend Work- 24.01.2025

## White Board Meeting in Beavers at 06:30

### Superintendents

Jesse Fritch - 052-3697329

Ibrahim A

Or Yaakov - 052-4268250

### CSA CM

Cody Baumann - 052-7582613

Eyal Ben Shabat - 052-2239767

Brandon Feerer - 052-878-4285

Mark Santiano - 052-6937203

Shmuel Rosenberg - 052-3878052

Abhilash Parameswaran - 052-6938827

Eden I

Max P

### MEP

### Cx

### Cranes

### Safety

- Safety Foreman- Nadav Alfasi- 052-5115772 [Nadav-Alfasi@Hoffmancorp.com](mailto:Nadav-Alfasi@Hoffmancorp.com)
- Safety Assistant- Hudifa Alshieck- 054-9408858 [Hudifa-Elscheich@Hoffmancorp.com](mailto:Hudifa-Elscheich@Hoffmancorp.com)
- Safety Professional - Or Pitusi- 054-812-4788 [Or-Pitusi@Hoffmancorp.com](mailto:Or-Pitusi@Hoffmancorp.com)



# Subcontractor Weekend Work- 24.01.2025

## FAB

### Utility Level / Roof / Stair Shaft

#### **Lesico**

Ehs Michel 0526060223

Foreman Manoj 0522450258

#### **HYG**

Ehs Salah 0507773119

Foreman Avishai 0503303939

#### **Elram**

Foreman: Shlomo 0545551702

Ehs: shy 0523632132

#### **Afcon electrical**

Ehs Steven 0559129333

Foreman Perdit 0552742935

## Subfab

- **Pach Taas**
  - W-E MARSes
  - Ilya: 0505771907
- **Afcon E**
  - All over SF
  - RAZ: 0526008487
- **Combe**
  - TTNE
  - Ali: 0526767936
- **MEGASON**
  - MOD 2
  - Israel: 0526869393
- **SELA**
  - 9E
  - Yoav: 0548076339

## Clean Room

- **Talad** – 20 guys CR 3E- lids cutting, 1W- Ceiling install, Int -3E grating (EHS Marcelo 0523540242, Super Igor 0544509386)
- Sig – 14 GUYS Mod1 – MOD2- 17 line, 7E above coils (EHS Beni 0506232032, Super Shmulik 0549205966)
- **Afcon** – 20 guys CR – 2E boxes 2W module, , 3E lighting, 1W -1E cable pUlling (EHS Lokanath – 0559652398, Supervisor Pradeep - 0552742935)
- **Chemo** –26 GUYS INT -TNTNE/W Supports, 1E Mars prep for PT , 1W Mars (EHS lotem 0544477112, Supervisor Winai – 0528090588 )
- **Sela** – 10 1E, 2W CRC (Supervisor Yoav 0548076339, EHS Sergey 0526650046)
- **Pach Taas** 3 guys, BF-CA 17 Line (EHS Avigdor 0542010393, Super Netanel 0543301880)
- Protocol 2 guys (Roni 0542496363, Lidia 05072148)
- Talent solution 11 guys CR 2E 1E/W maintenance cleaning (EHS 0508777611, Super Faraz 0547139706)
- W&W 15 guys MOD1 – catwalks, MOD2-TTSE docking (EHS – Wisam 0509828381, Supervisor Rakesh - 0552837963)



# Subcontractor Weekend Work- 24.01.2025

## PSSS

- Pach Taas** – Module bolting PSSS Roof, Lift 2 3-5P
  - Foreman – Vadim – 053-5552472
  - Safety – Offek – 050-2161429
- **Afcon Electrical** – Cable Tray and Cable Pulling UPW/BCD UL and 2-3P Roof & Lift 2
  - Foreman – Charles – 055-2740190
  - Safety – Stevan – 055-9129333
- **Chemo A.** – PSSS Roof and Lift 2 2-5P and PCW Room Insulation
  - Foreman – Maor – 050-955-9071
  - Safety – Rotem – 054-447-7112
- **SK Engineering** – GL4 UL Piping, 3P roof/Lift 2 Piping
  - Foreman – Marcela – 054-5210133
  - Safety – Marzuke – 054-447-7112
- **Carmel Bidud Duct** – Spec Gas, BCD, and 2P Roof
  - Foreman –
  - Safety –
- **Combe Waste** – 2P Waste Piping at GL4/SSS Building
  - Foreman – Chaim – 054-5210133
  - Safety – Marzuke – 054-447-7112
- **Combe UPW** – BCD/UPW Rooms
  - Foreman – Boris – 054-8346412
  - Safety – Shimon – 054-5348843
- **Lesico** – UN2/Waste Vent Rack
  - Foreman – Selvin – 052-4787370
  - Safety – Oskar – 052-5221474

## WJG

- **Afcon** – Lift 2 and Utility Level Cable Tray
  - Foreman: Montu 055 911 6973
  - Safety: Pradeep 055 274 2935
- **Chemo:** 2J Utility Level, 4J/5J Lift 2 Piping (Hot Work)
  - Foreman: Maor 050 988 9071
  - Safety: Erez 054 971 6840
- **Pach Taas:** All over (HRA)
  - Foreman: Ilya 050 577 1907
  - Safety: Eran 054 770 6233
- **Lesico:** Natural Gas Piping Utility Level
  - Foreman: Anoop 058 691 1748
- **SK** – (pressure test G water column 4J MAH)
  - Tufik 54-9433592



# Subcontractor Weekend Work- 24.01.2025

## CUB

### **Meptagon: CUB1**

Foreman: Serghei – 0548038554

Safety: Haym – 0552728807

### **D&P: CUB1/2**

Foreman: Konstantin - 0545501602

Safety: David – 0548894447

### **Sela: CUB1/2**

Foreman: Yoav Yossi - 0548076339

Safety: Sergey Koharchok - 0526650046

### **Megason: CUB1**

Foreman: Israel – 052686939

Safety: Guy Ishbit – 0544915409

### **Chemo: CUB1/2**

Foreman: Dude Cohen – 0509808846

Safety: Daniel Lackford - 0525217434

## Trestle

### **SNJ:**

PIPES –T40 - UB CUB - 15 workers (3 teams)

STEEL –Galvanized paint + T30 A+B - 8 workers (2 teams)

Steel adjustment - 10 workers (3 teams)

FORMAN-

Mucles- 0526017477

SAFETY TRESTLE-

Aviram shrike - 0509059920

## Siding

## Site

**Derech Afar** – Shotcrete wall

Supervision = Raed: 054-244203

EHS = Alex: 054-5403849

**Olizki** – Offload 18 & CUB1 trench drains, Southeast CUB1 grading

Supervision = Or: 052-4917313

EHS = Ben: 052-4033565

## Sut

### **Sela**

EHS 052-6650046

Foreman 054-8076339

# Daily Coordination Meeting



14:00 Sign In