

# Daily Coordination Meeting



14:00 Sign In

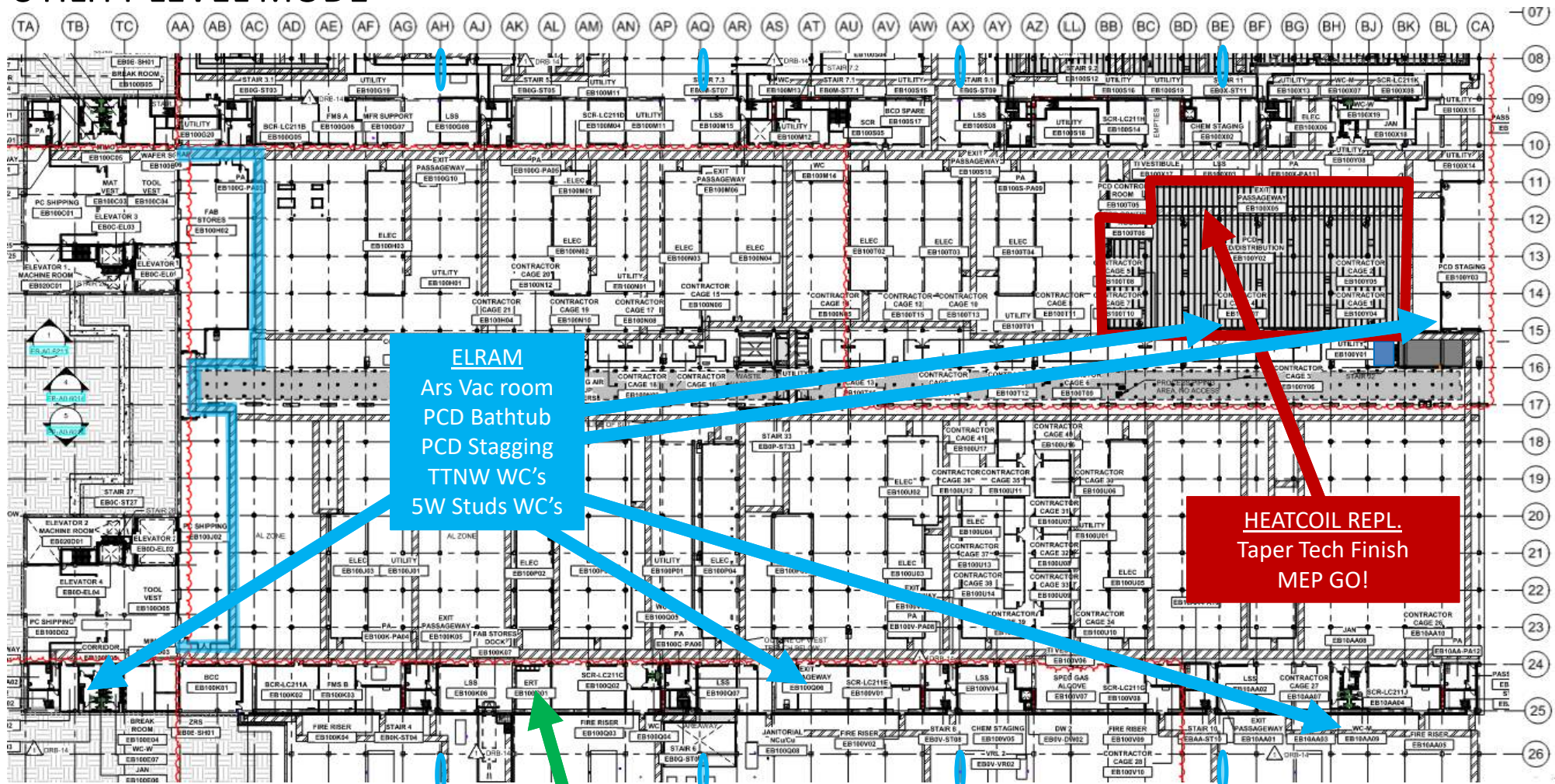
# Daily Coordination Meeting

## General Topics:

- Continued in climate weather
- Closures around trestle due to pressure test



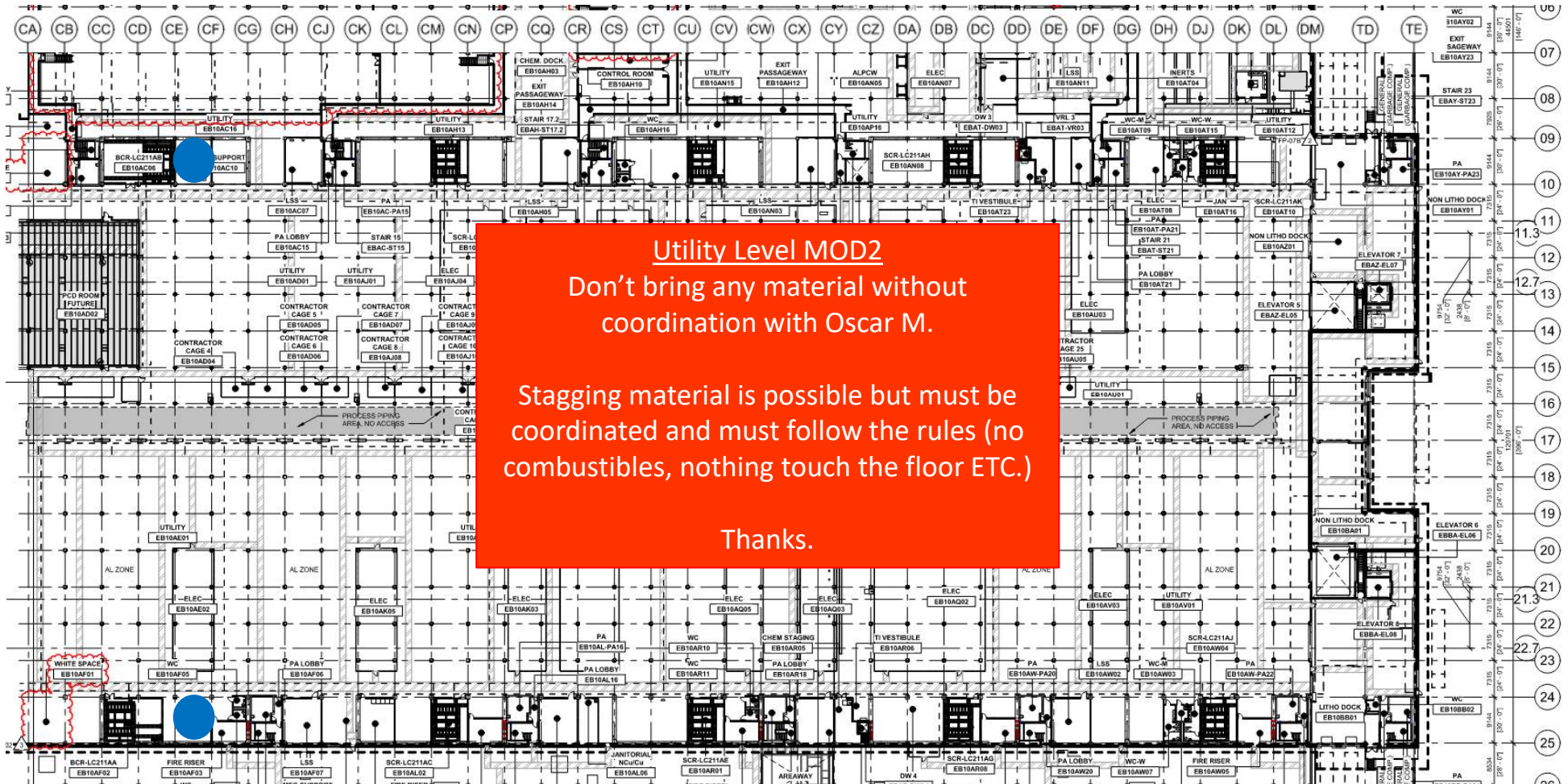
## UTILITY LEVEL MOD1







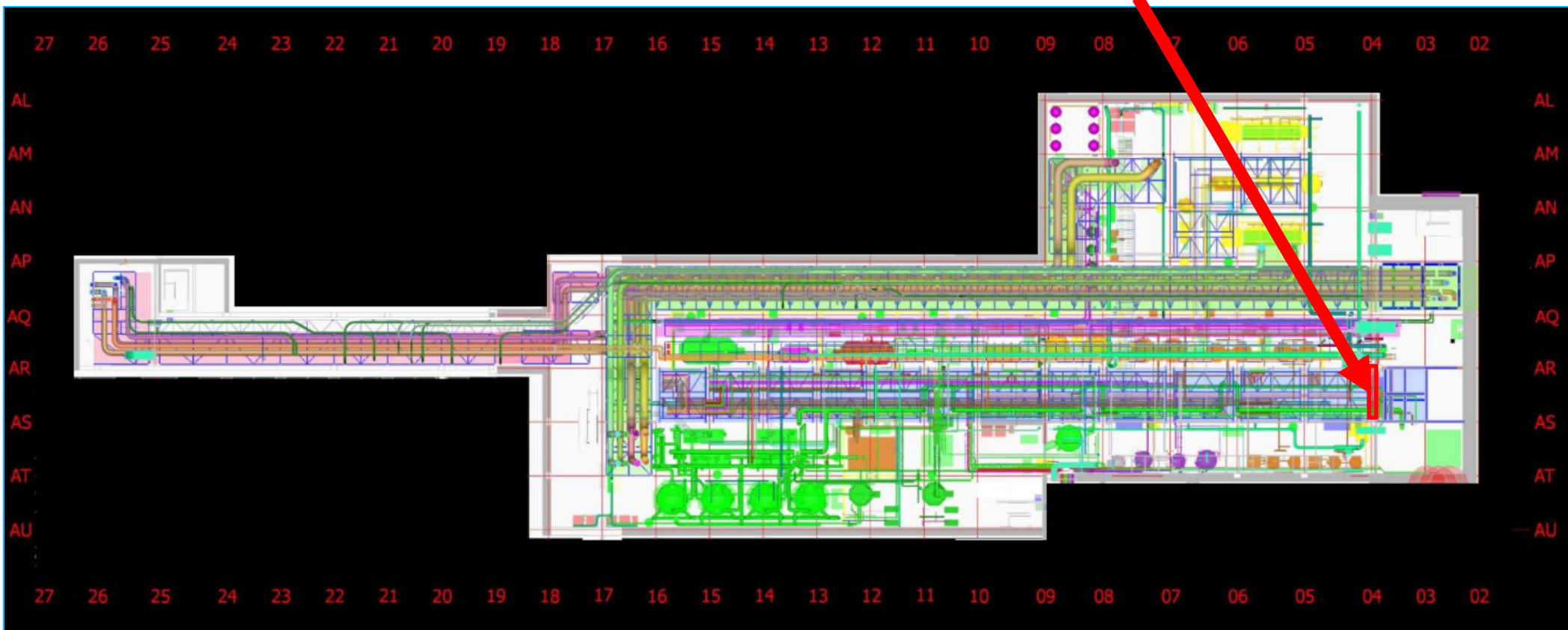
# UTILITY LEVEL MOD2





SUT 38.1 LEVEL

OH roll-up door  
Install ???

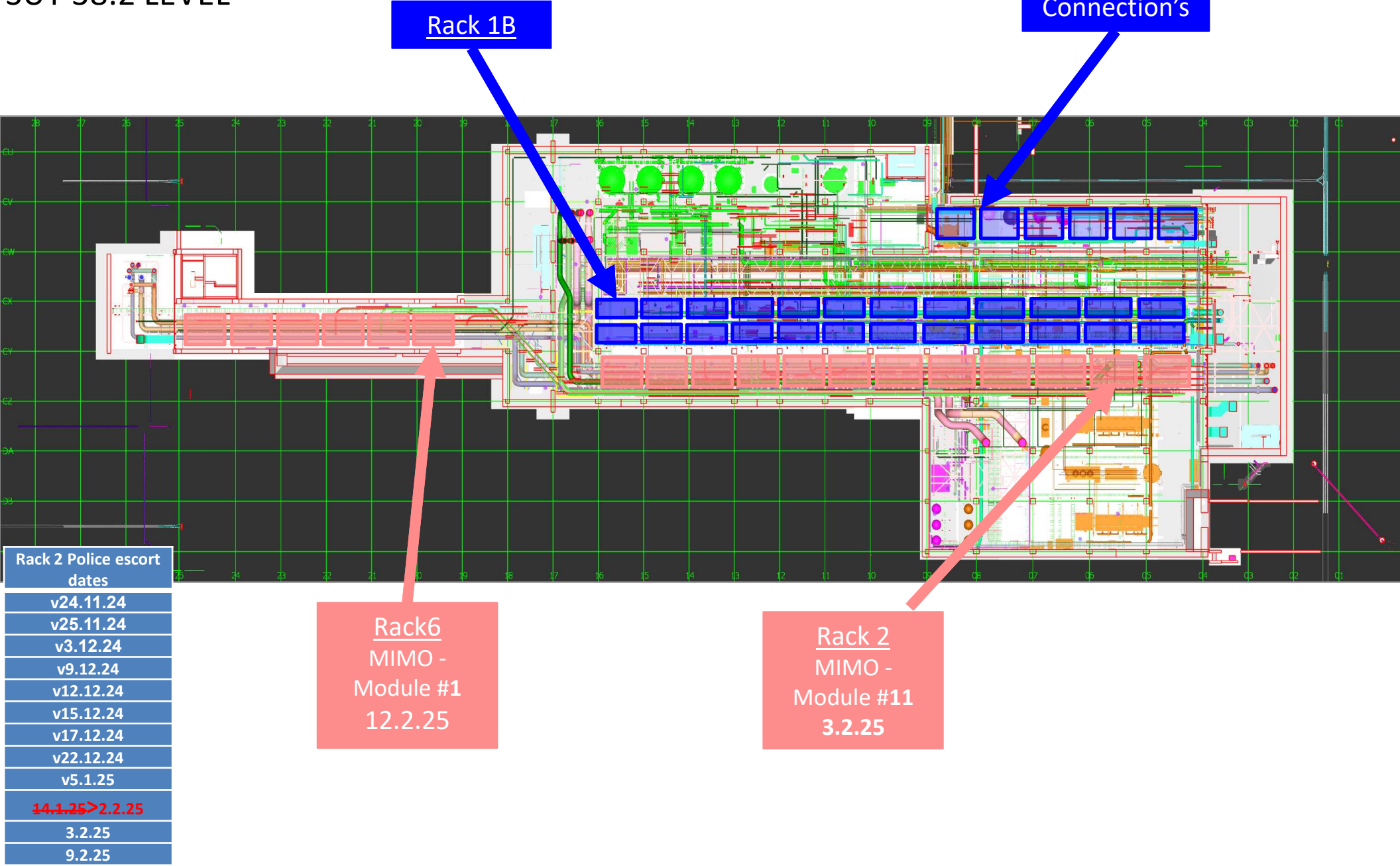




HOFFMAN CONSTRUCTION COMPANY

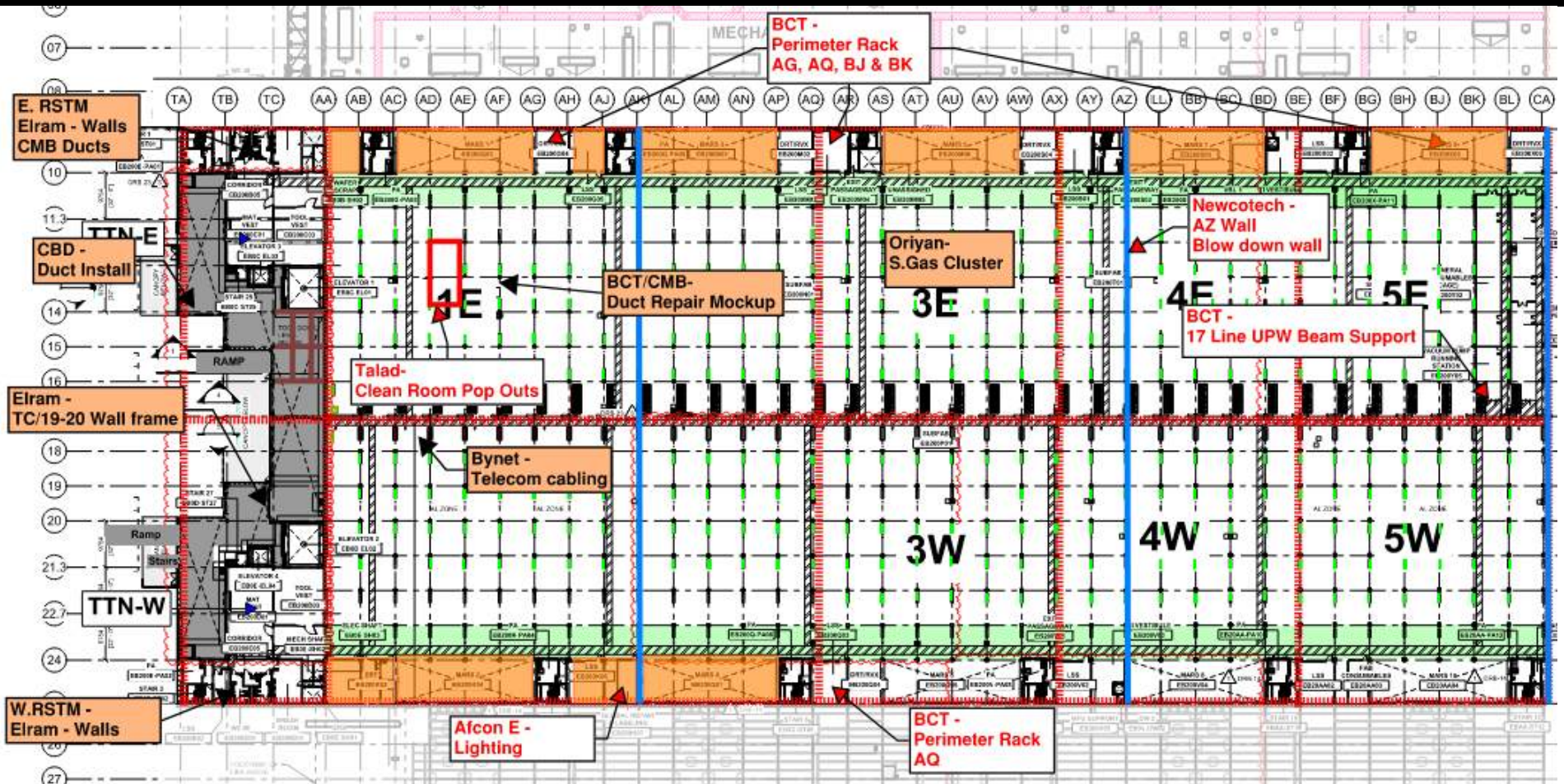


SUT 38.2 LEVEL



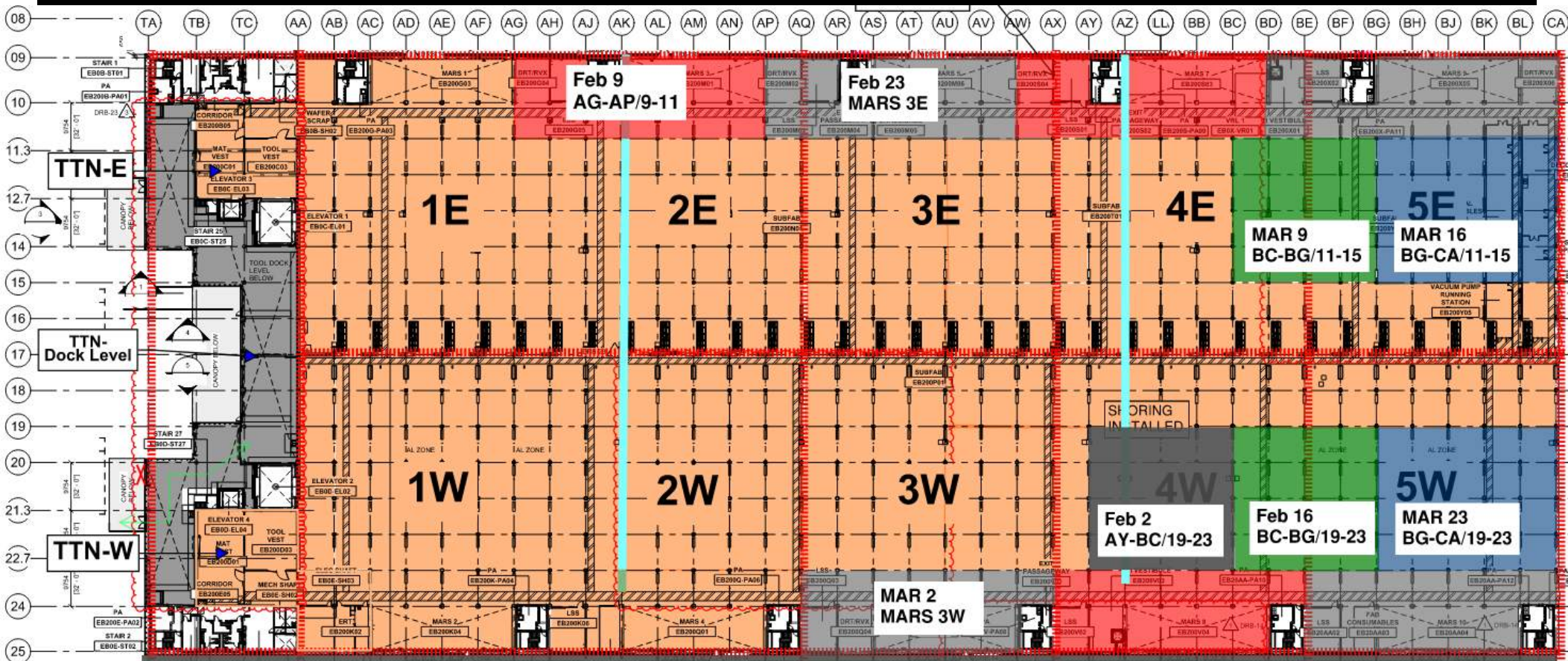


# SUBFAB BUILDOUT MOD 1



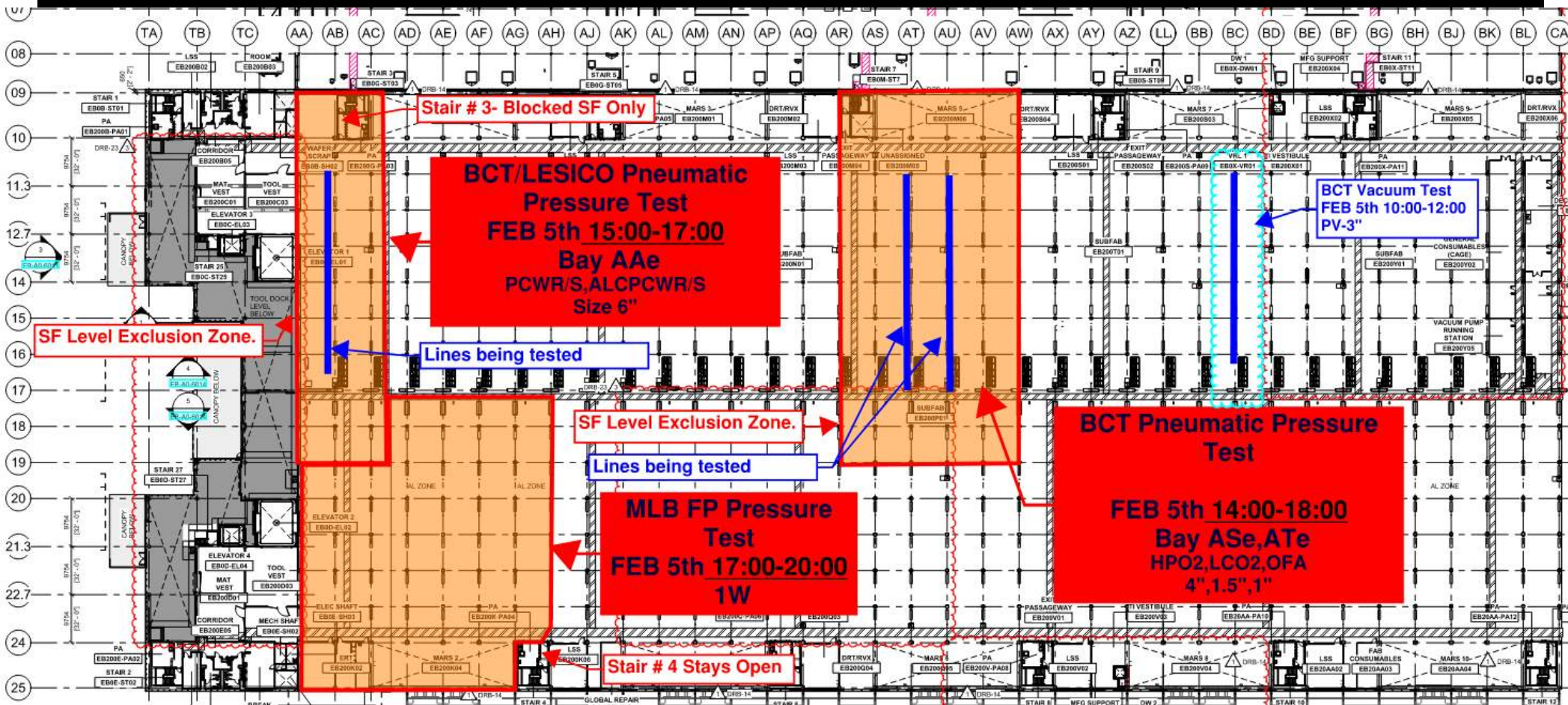


# SUBFAB CRC TOPCOAT



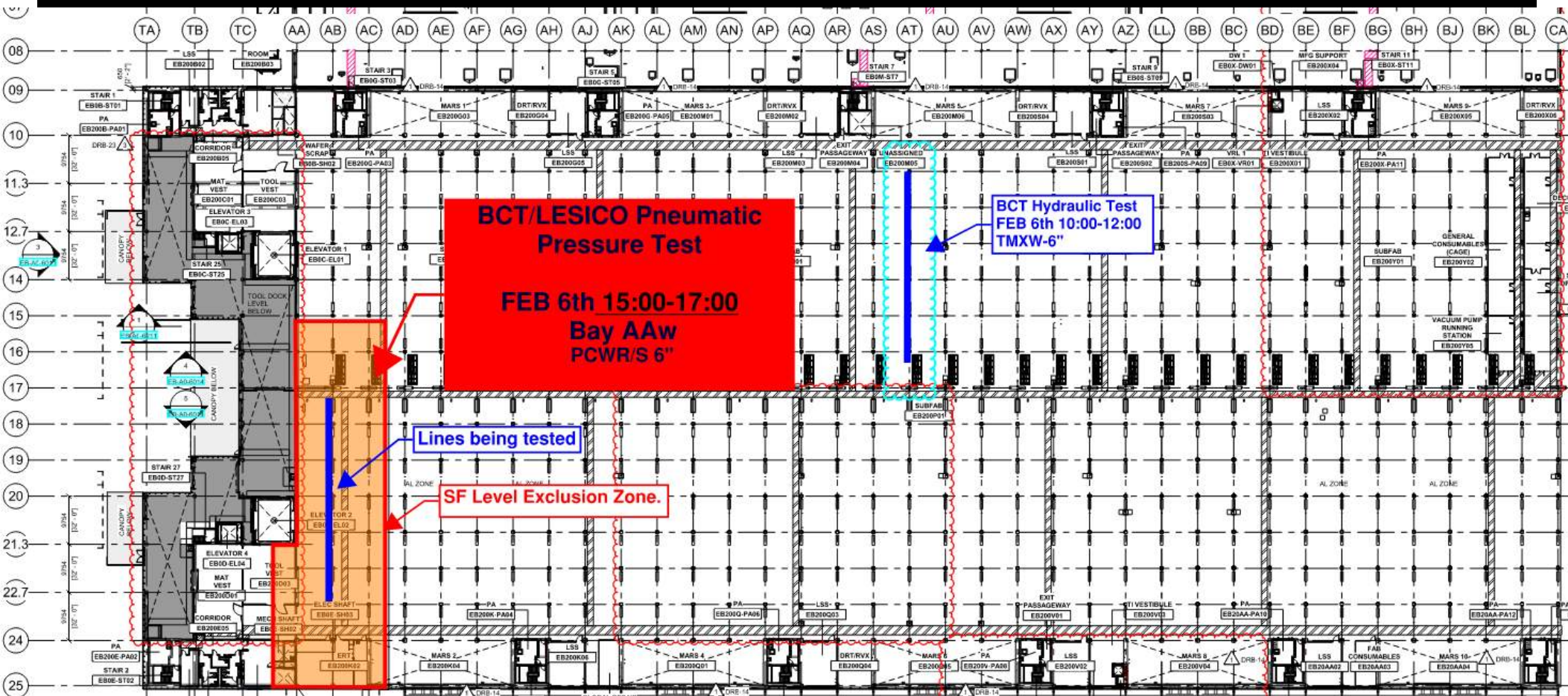


# BCT Pressure Tests Today



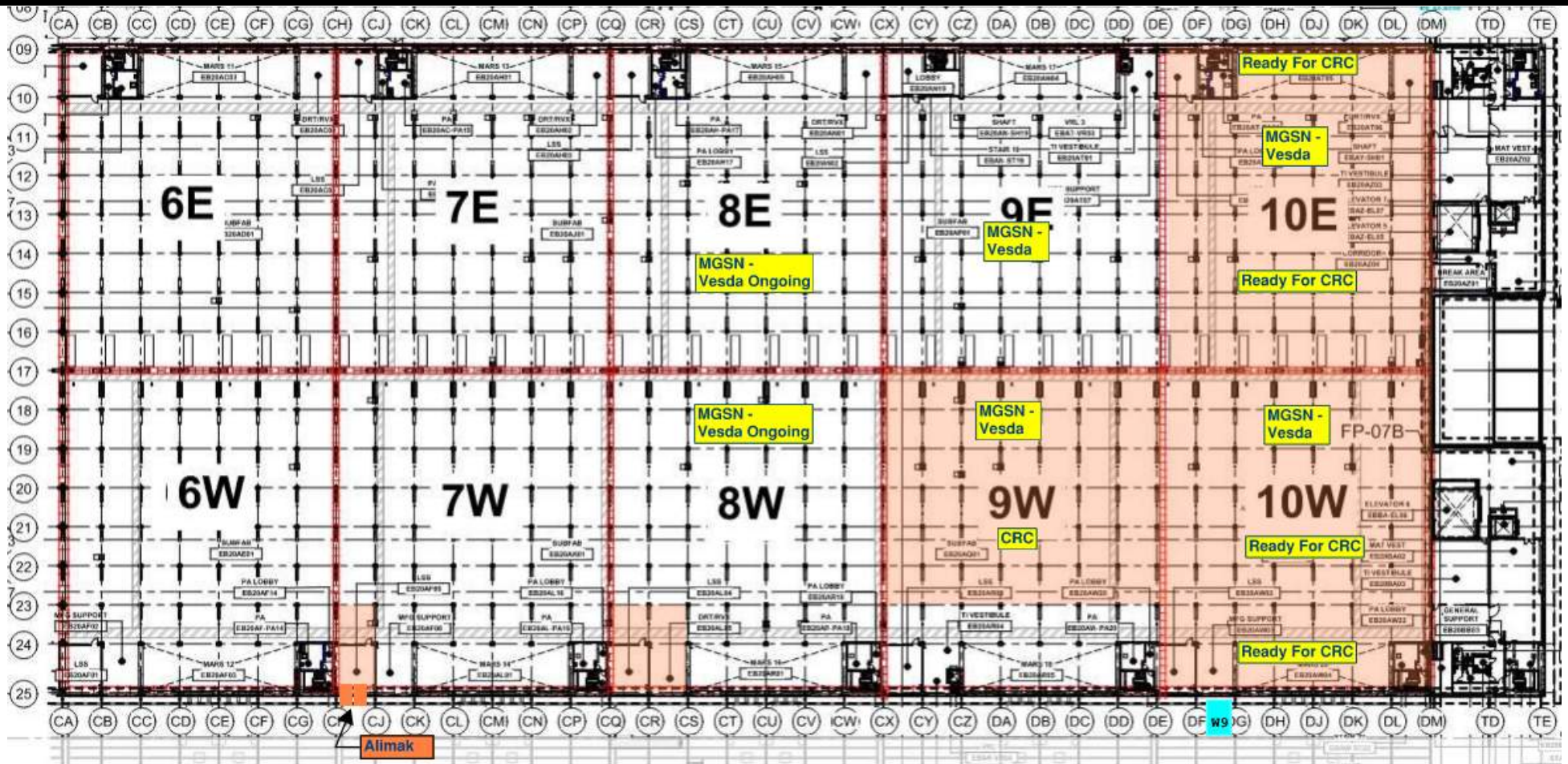


# SF Pressure Tests Tomorrow

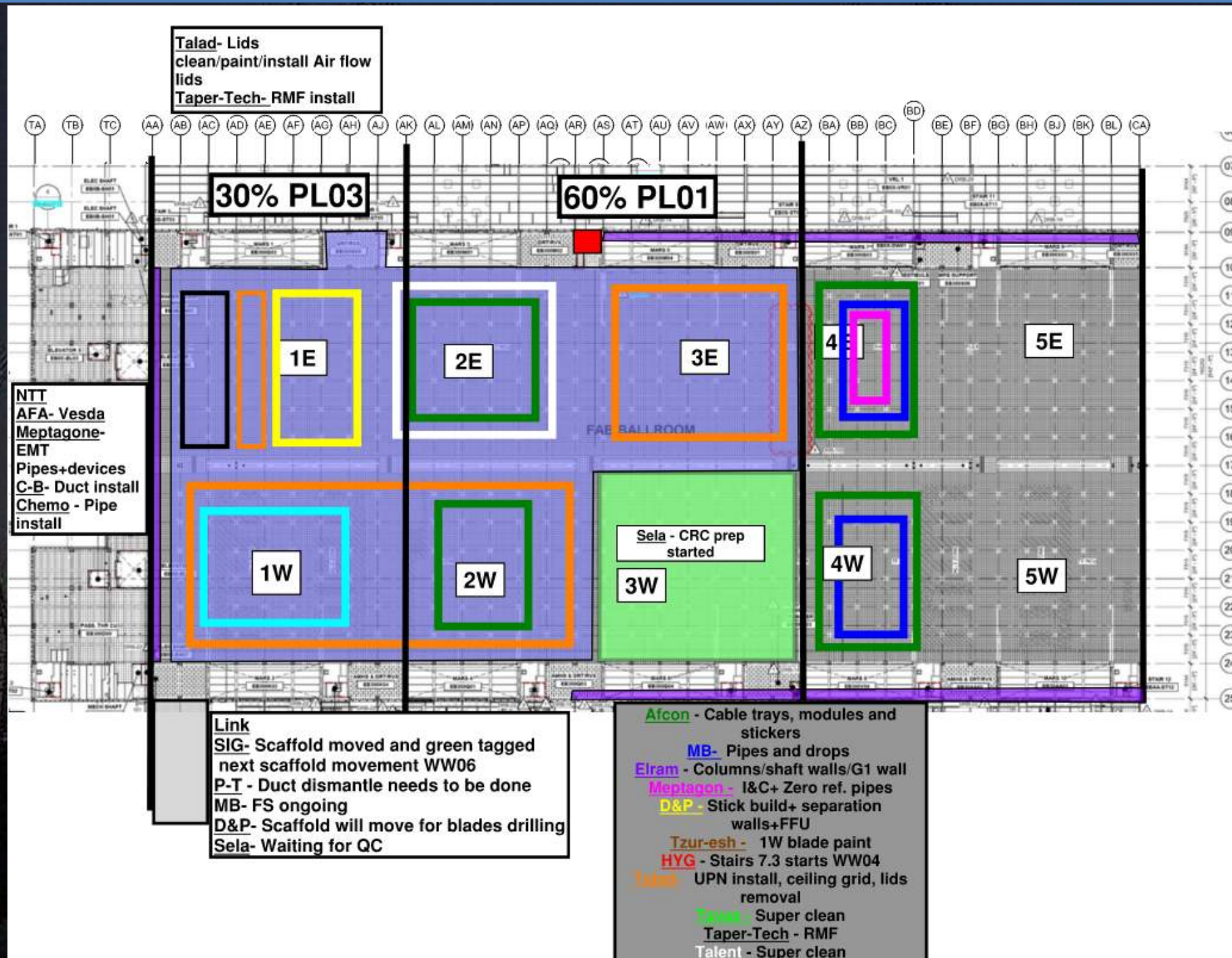




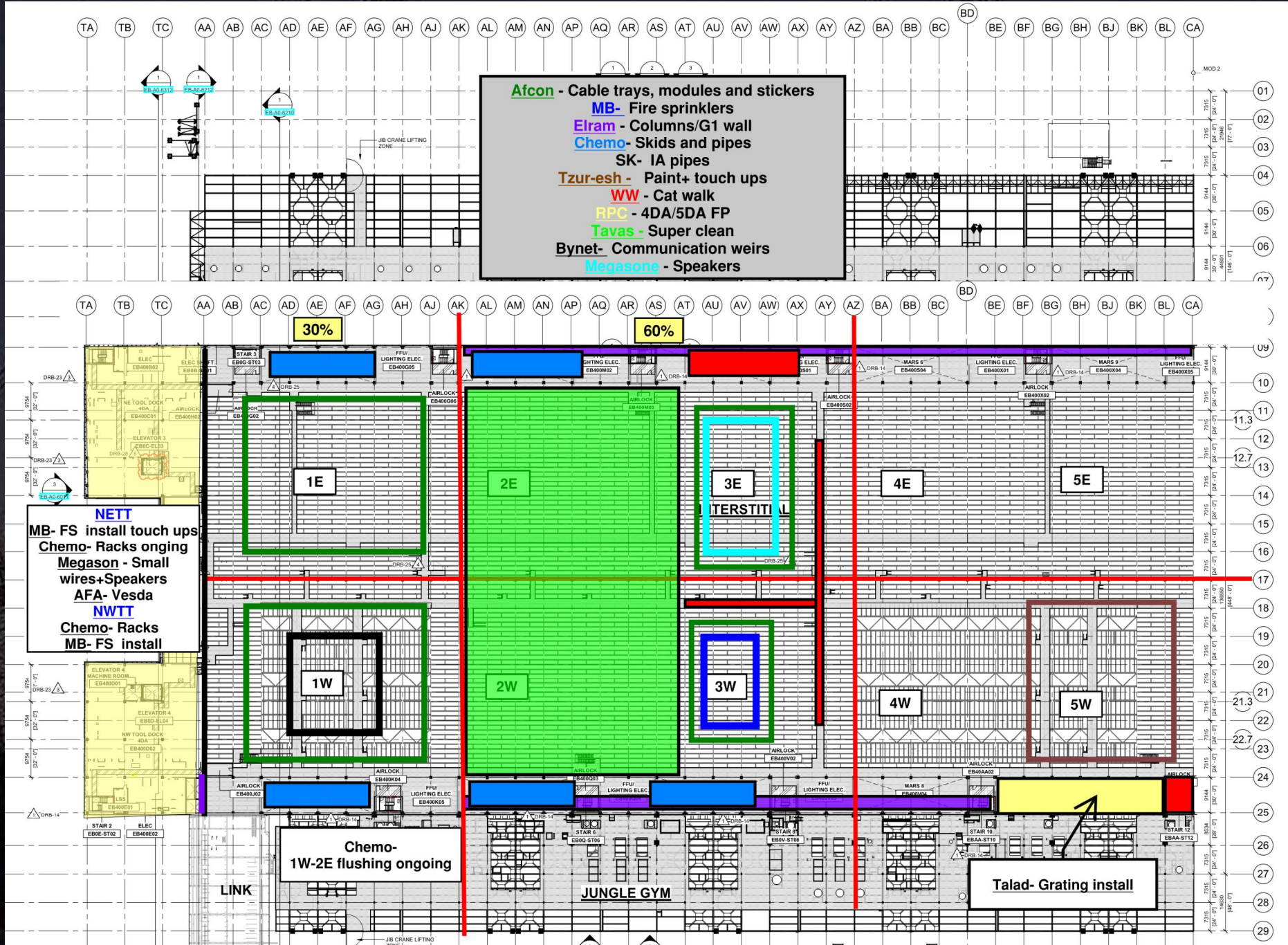
# SUBFAB BUILDOUT MOD 2



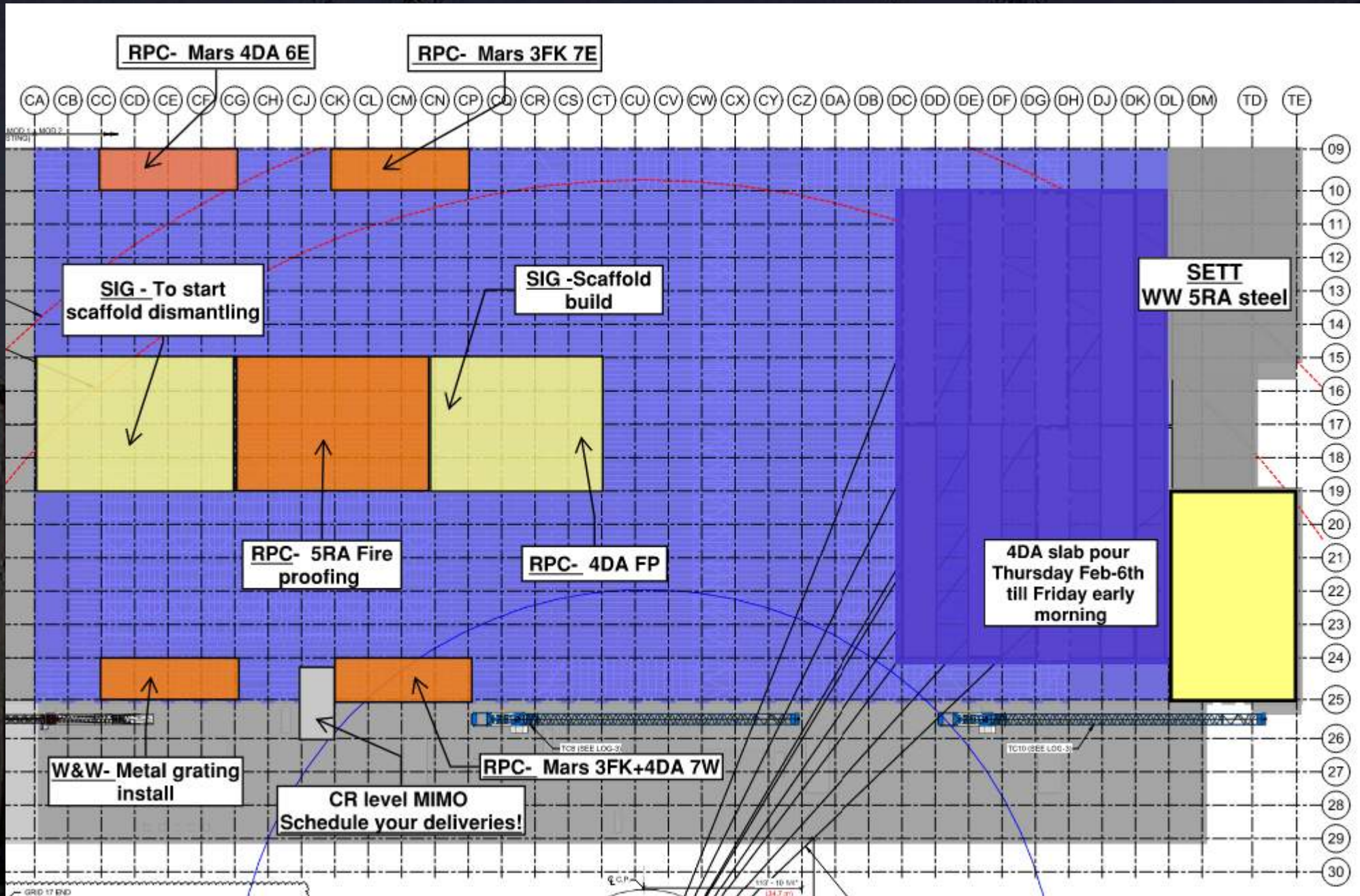




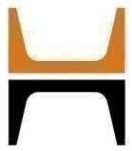












60% entrance

**Protocol Level 1 starts on the 60%**

**Good housekeeping is mandatory !**

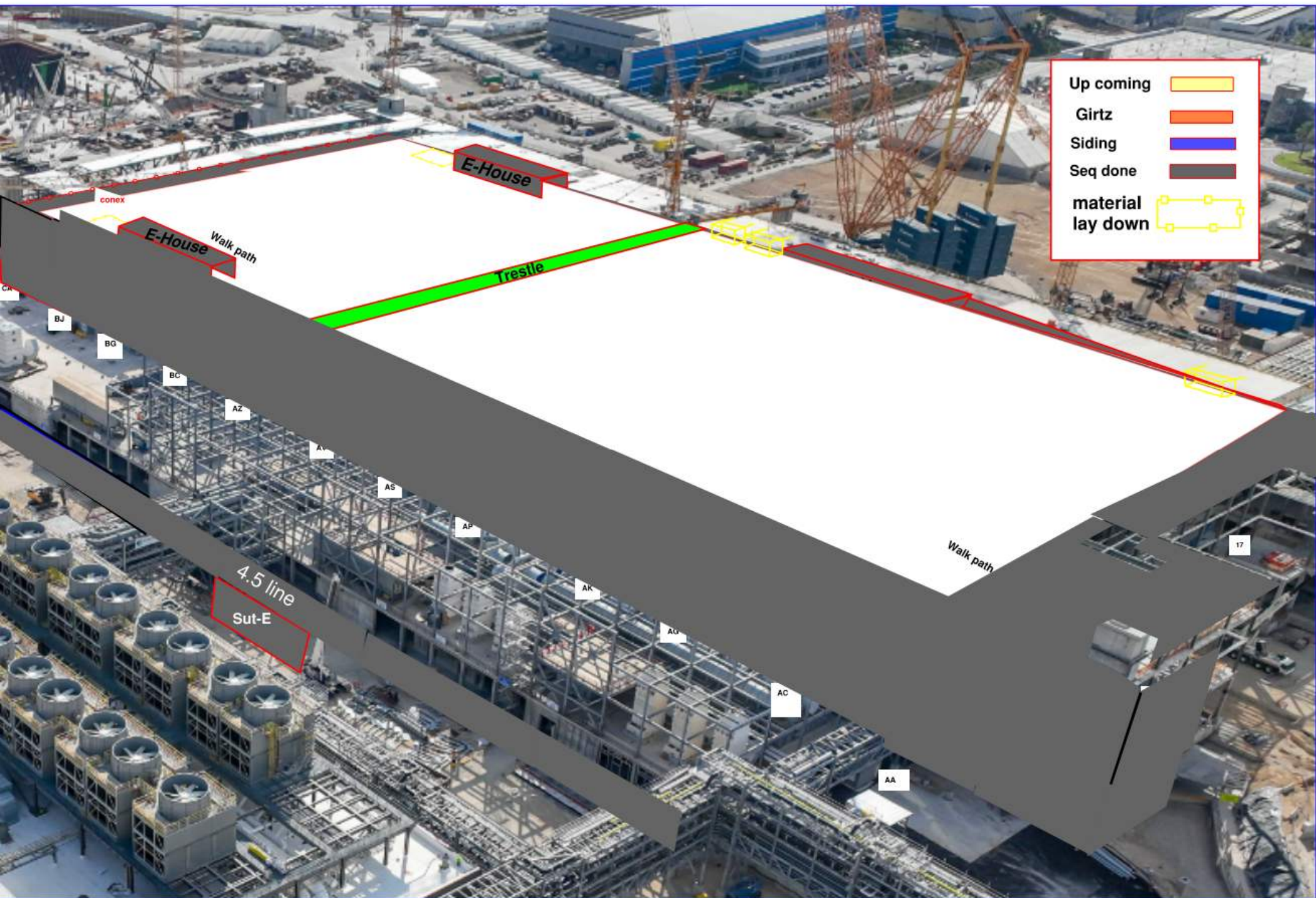
**Clean as you go!!**

**Clean up!  
Everywhere!  
All times!**

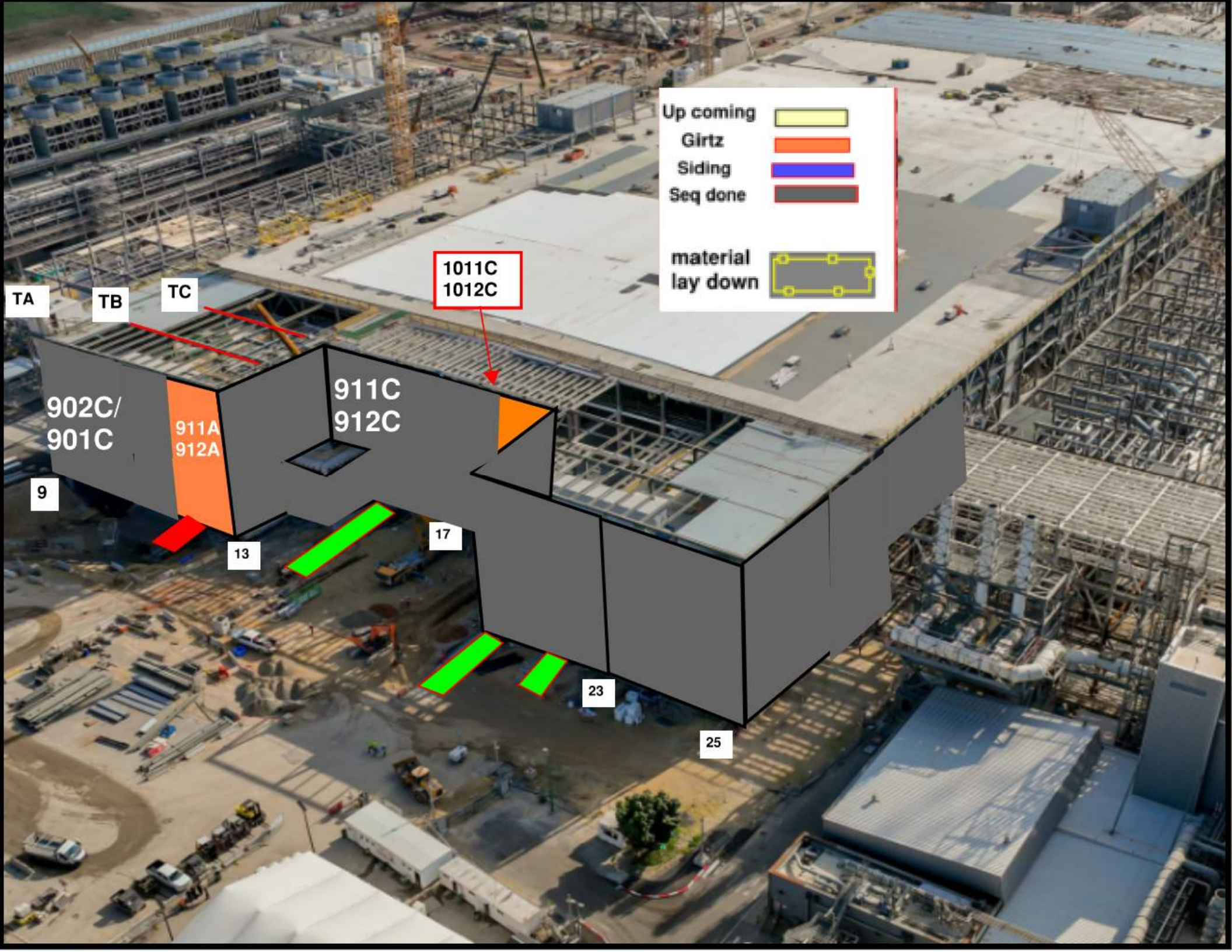












Up coming

Girtz

Siding

Seq done

material lay down

1011C  
1012C

TA

TB

TC

902C/  
901C

911A  
912A

911C  
912C

9

13

17

23

25



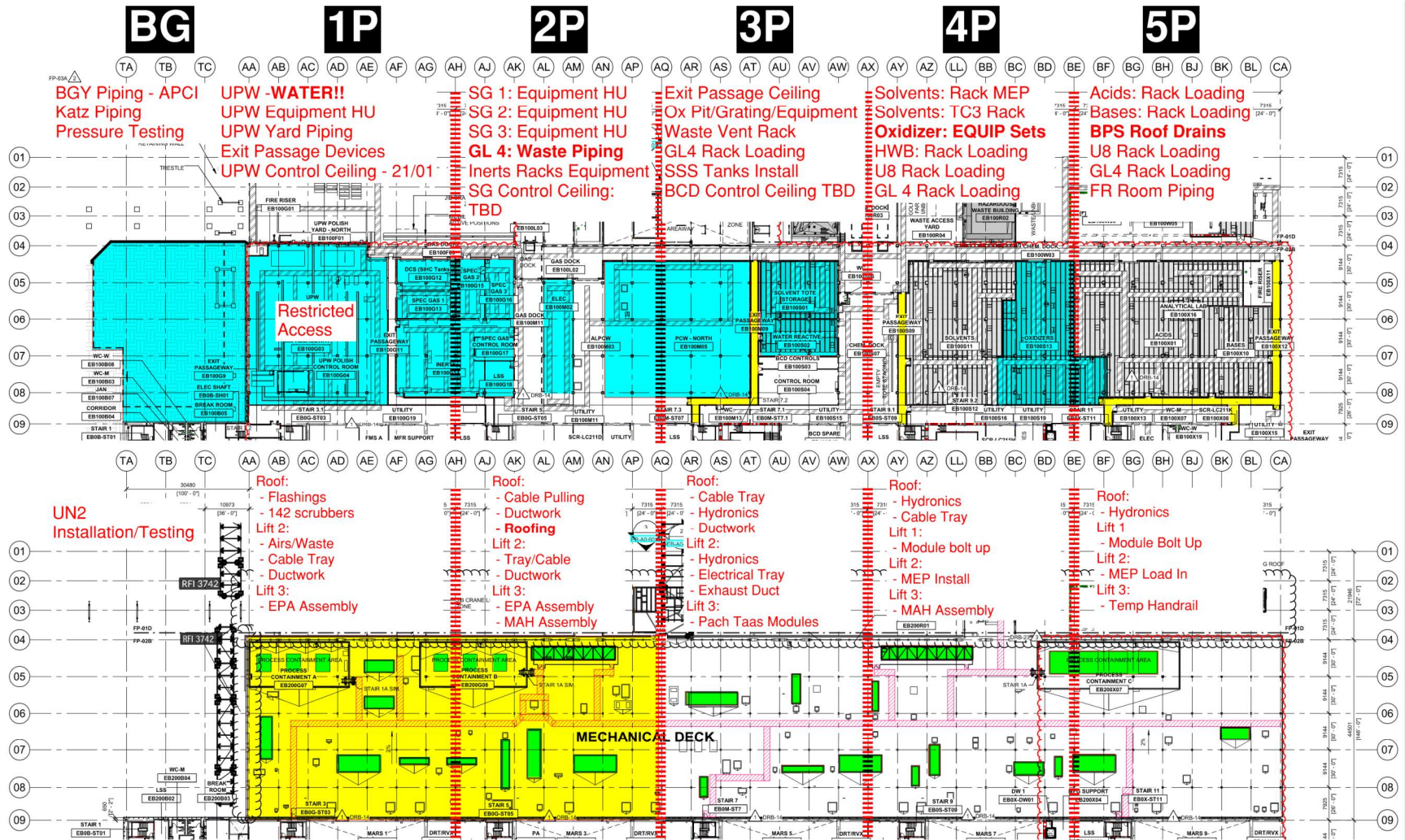




# PSSS.1

## Utility Level 1YA

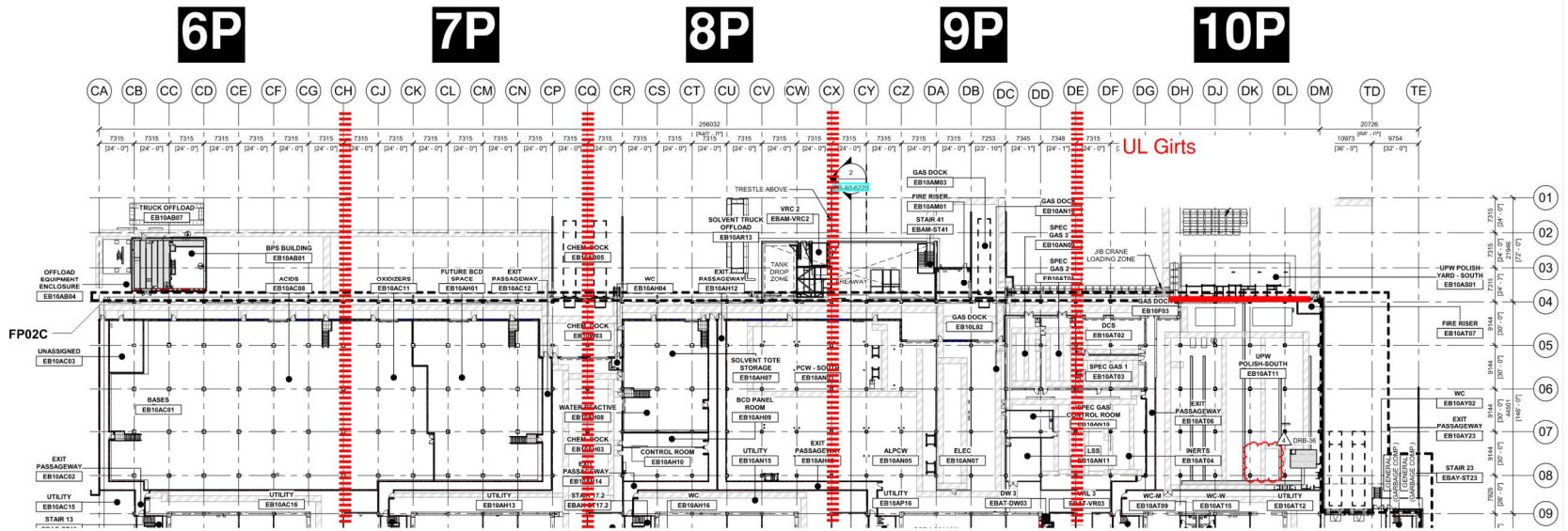
PSSS Roof  
2SA



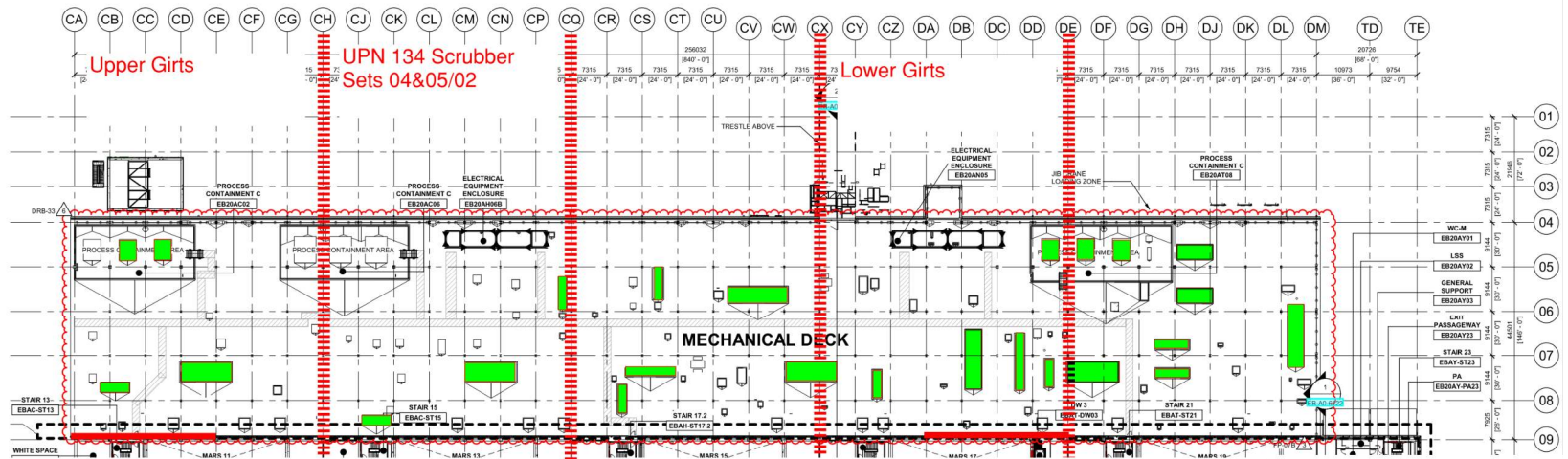


# PSSS.2

## Utility Level 1YA



# PSSS Roof 2SA





# PSSS 05/02 Pressure Tests

**BG**

**1P**

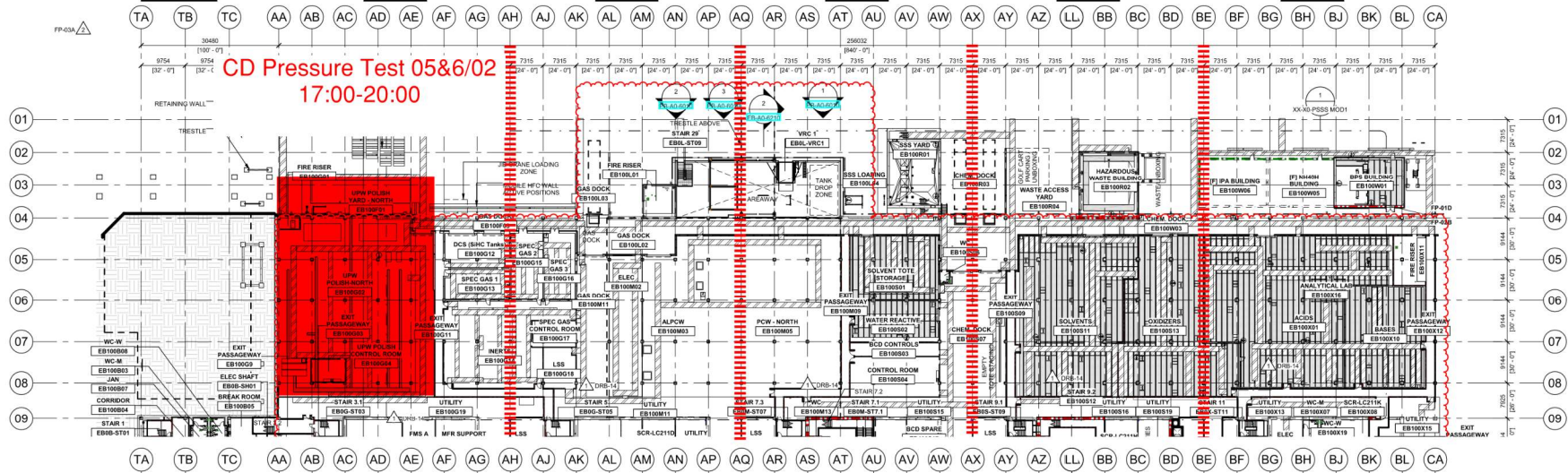
**2P**

**3P**

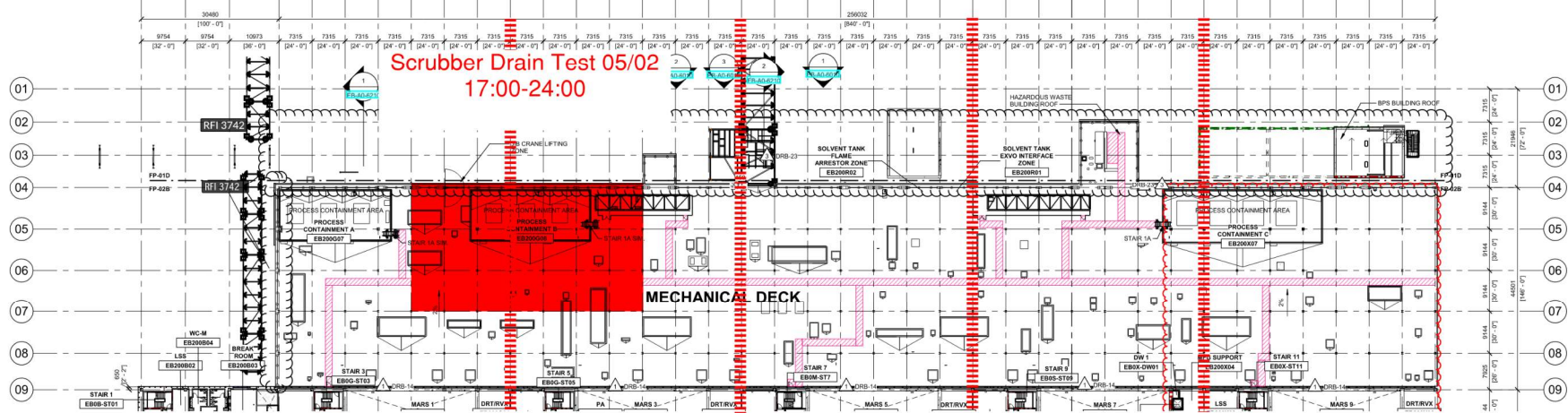
**4P**

**5P**

Utility Level  
1YA



PSSS Roof  
2SA





# H2 Vent Pressure Test

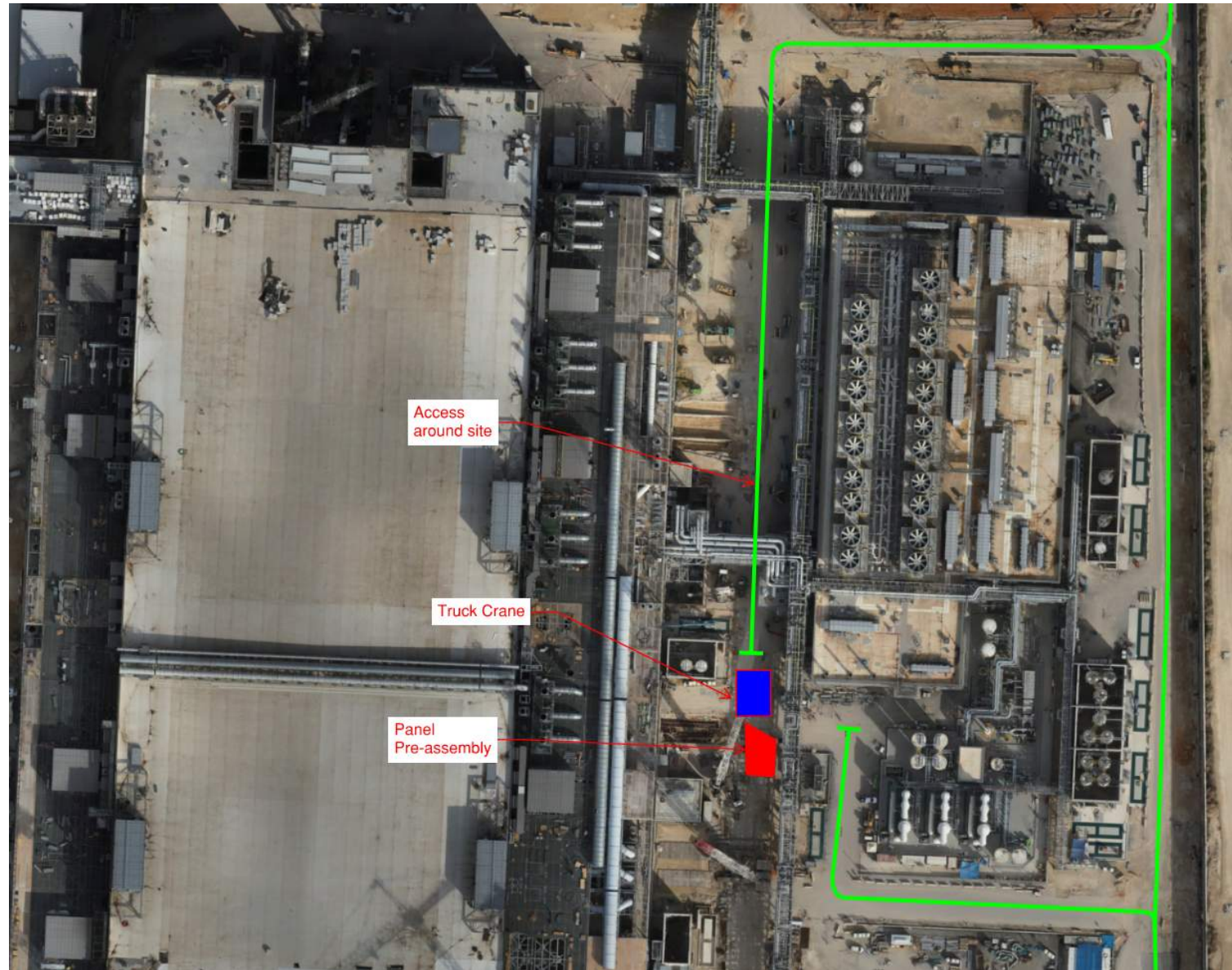
05&6/02 17:00-05:00



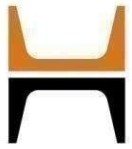
PSSS Jungle Gym  
Closures: ALL LEVELS  
BGY Closed  
Trestle and Road Closed



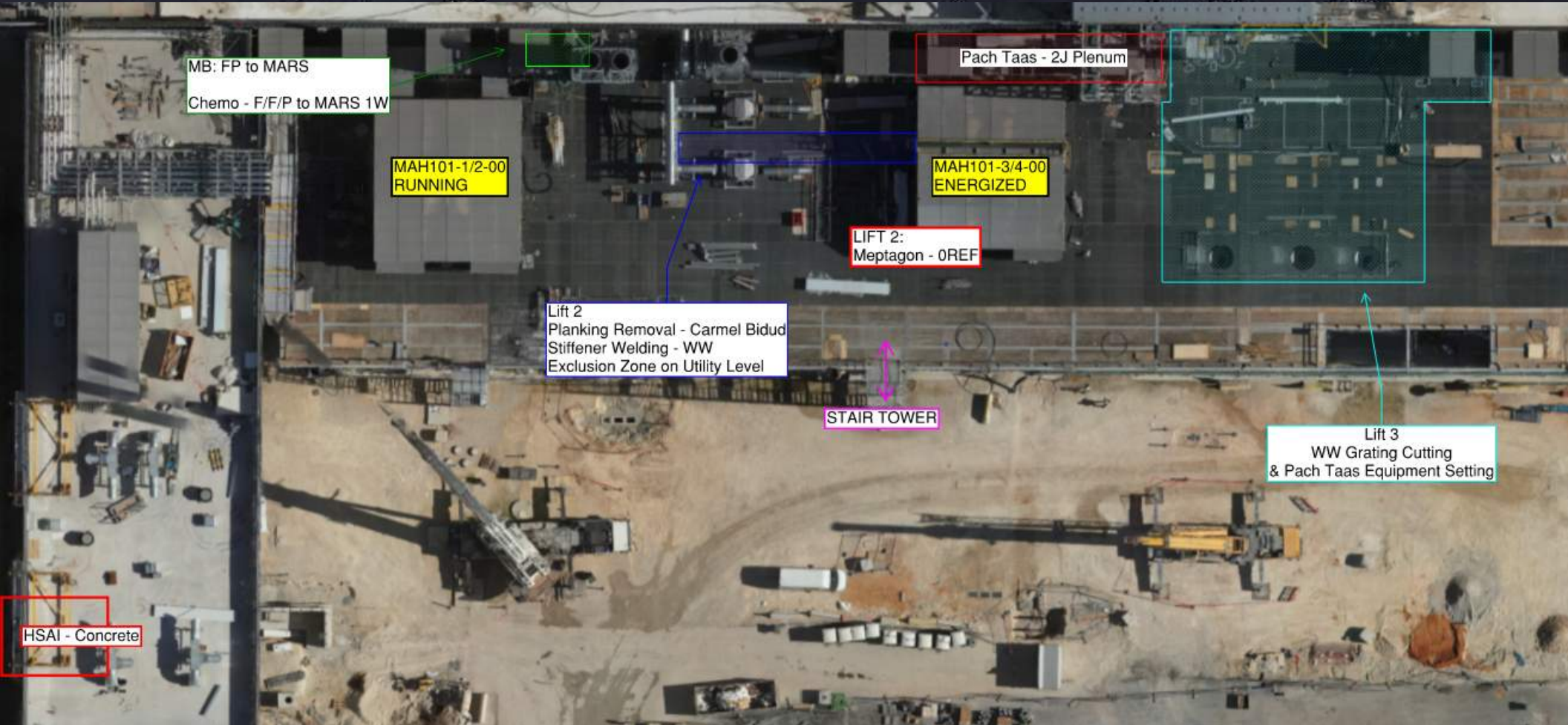
GUT ROAD  
CLOSURE  
06/02 @  
12:00 Thru  
09/02 @  
09:00







# WJG 01J, 02J LIFT 2 & 3

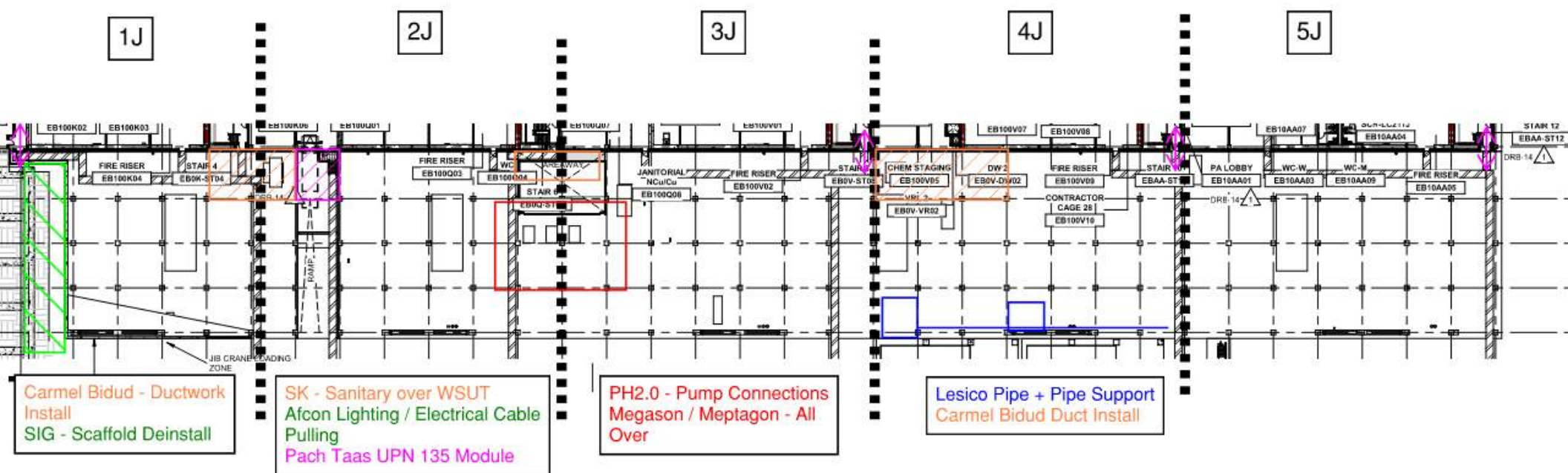




# WJG 03J, 04J, 05J LIFT 2 & 3



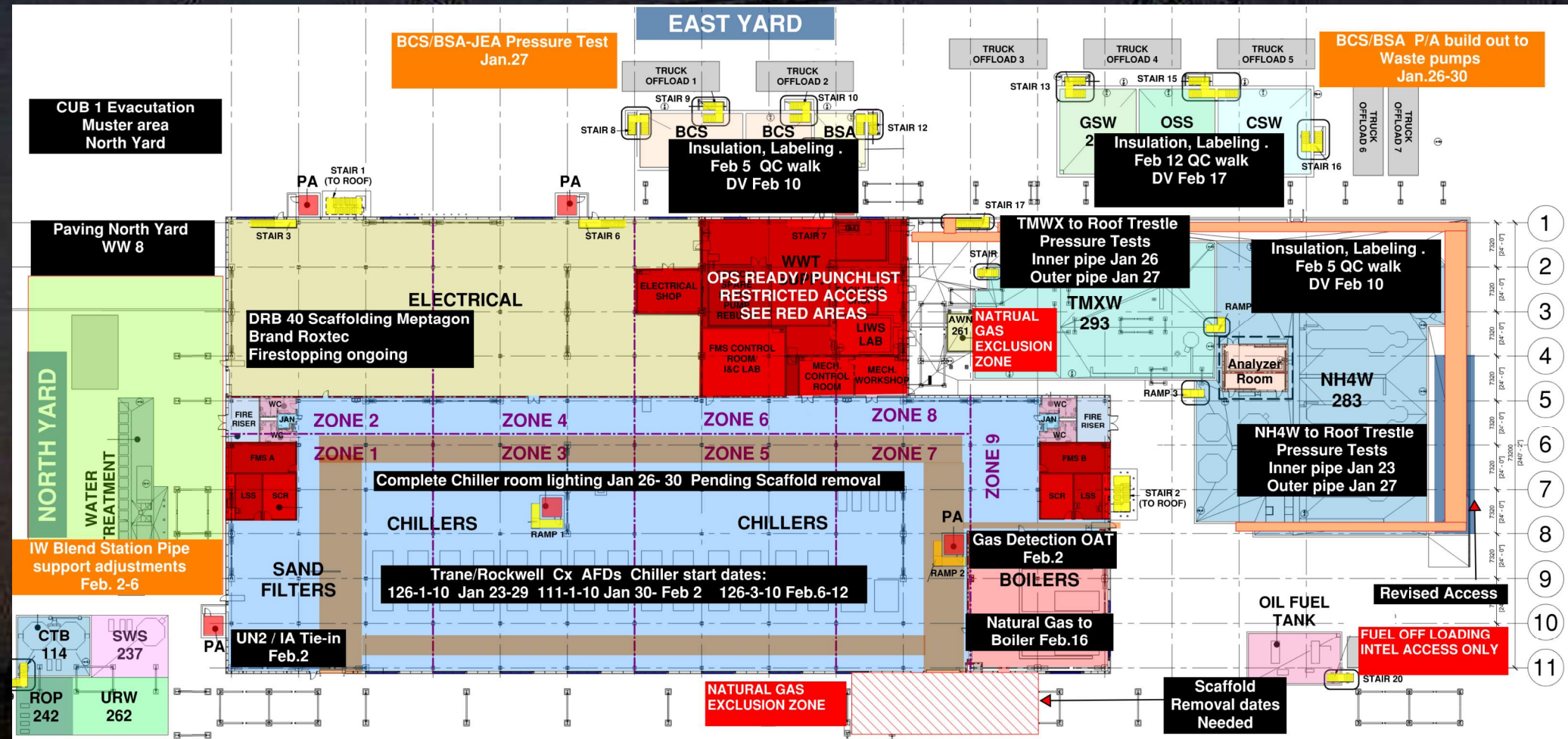




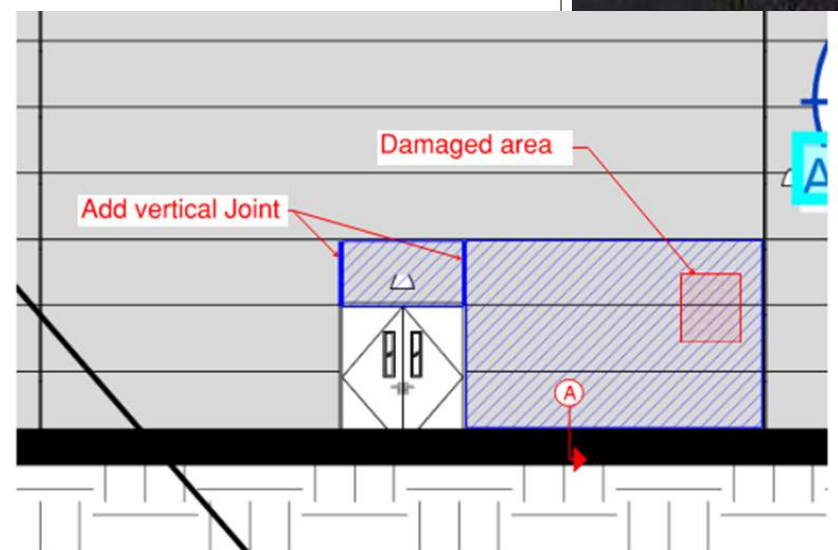




# CUB 1

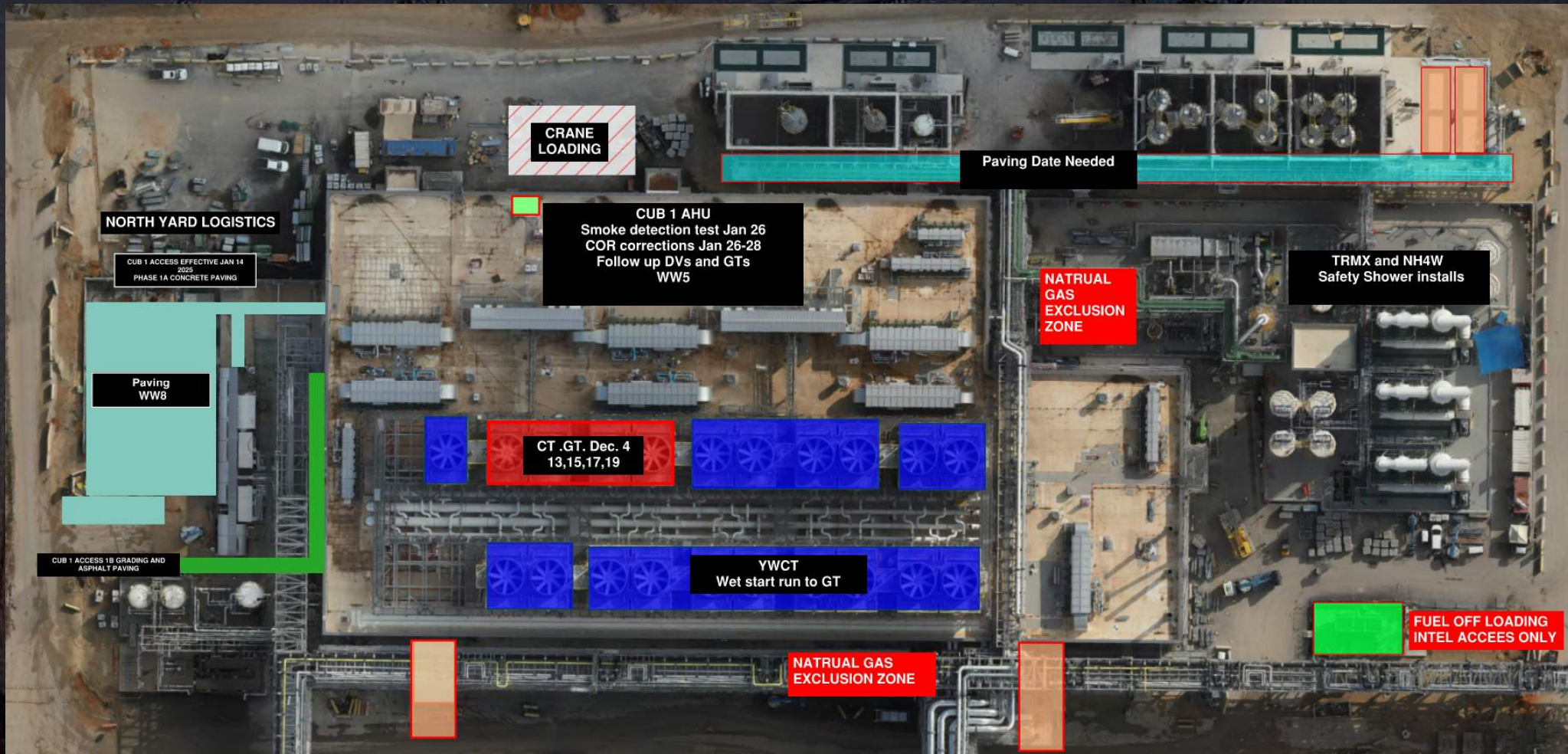








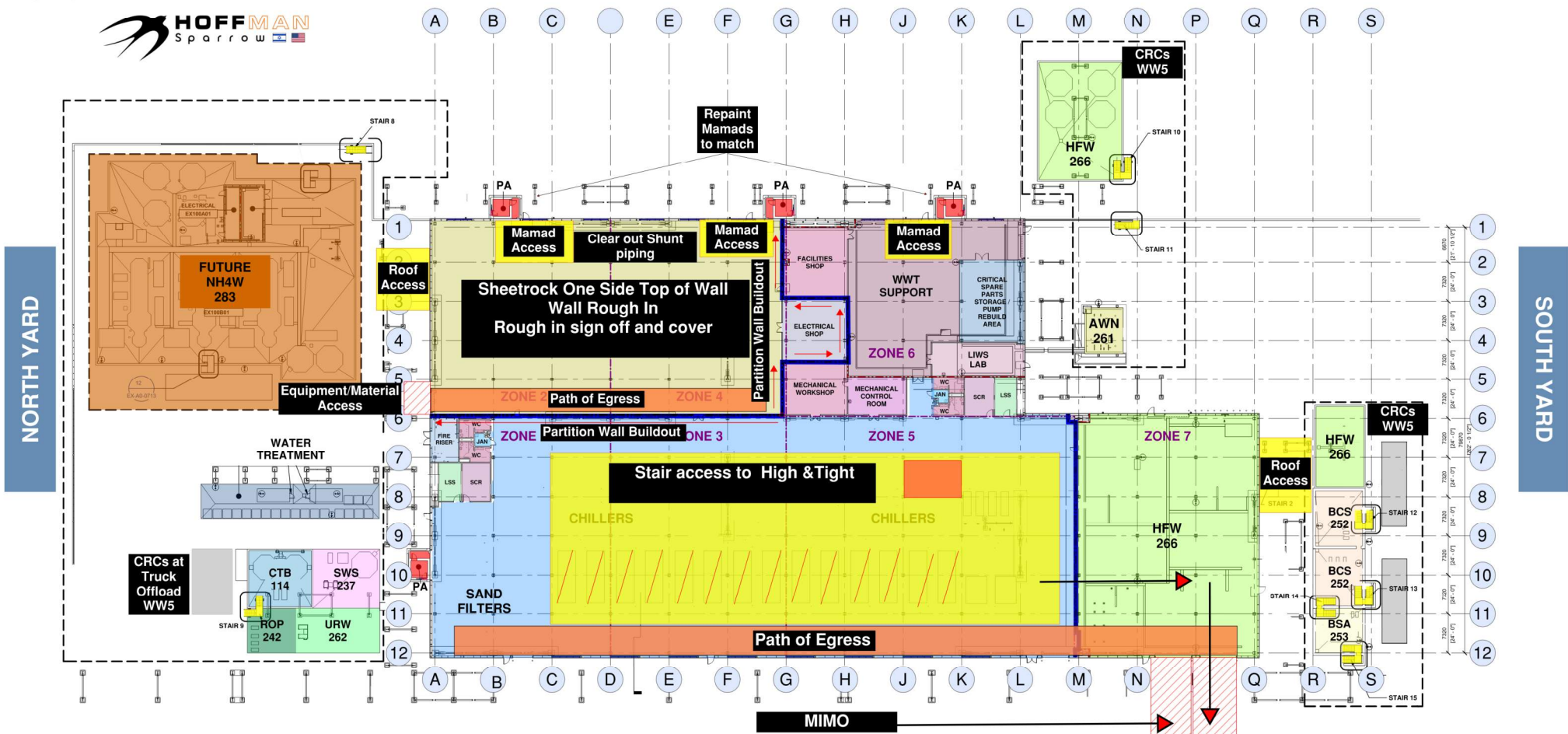
# CUB 1 – EXTERIOR/ROOF





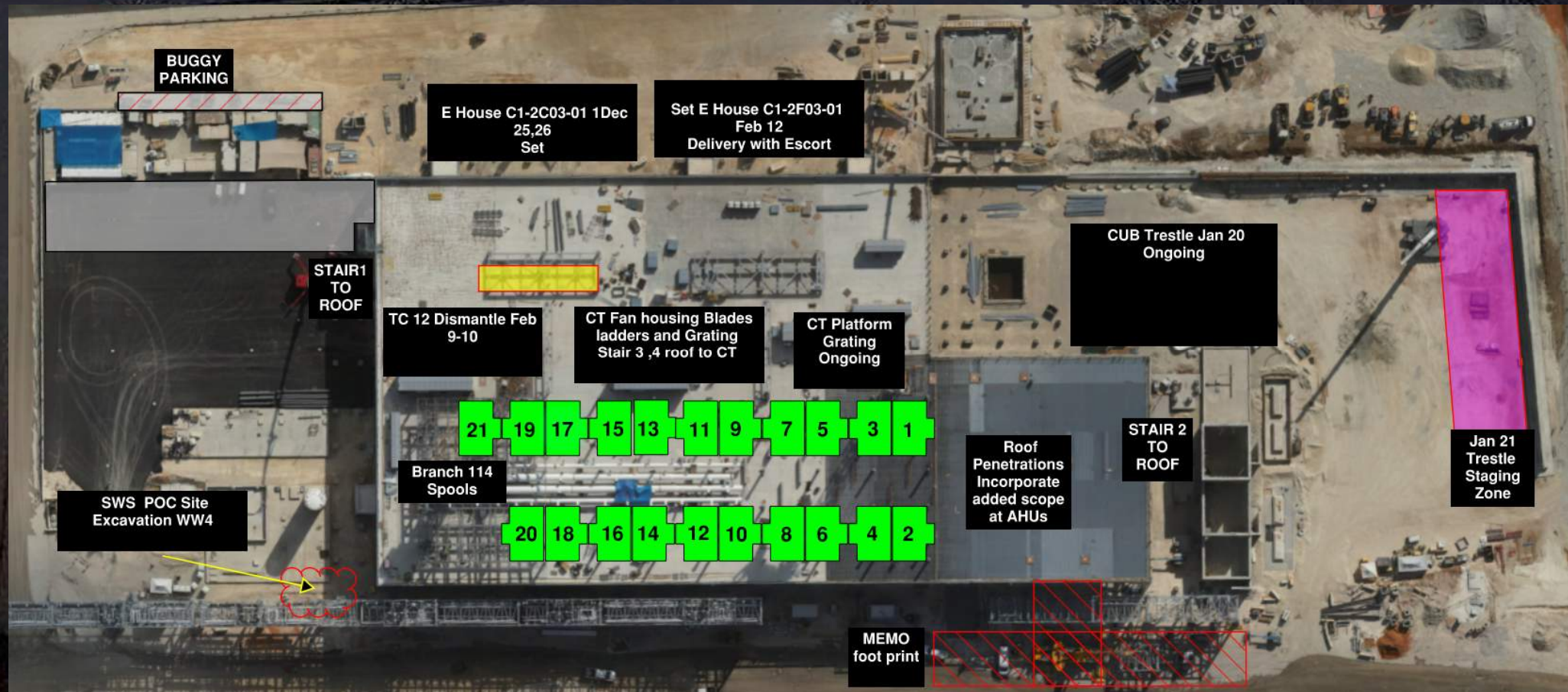
# CUB 2- Load in ,H&T, Framing and Sheetrock

## CUB 2 COORDINATION MAP

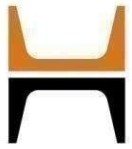




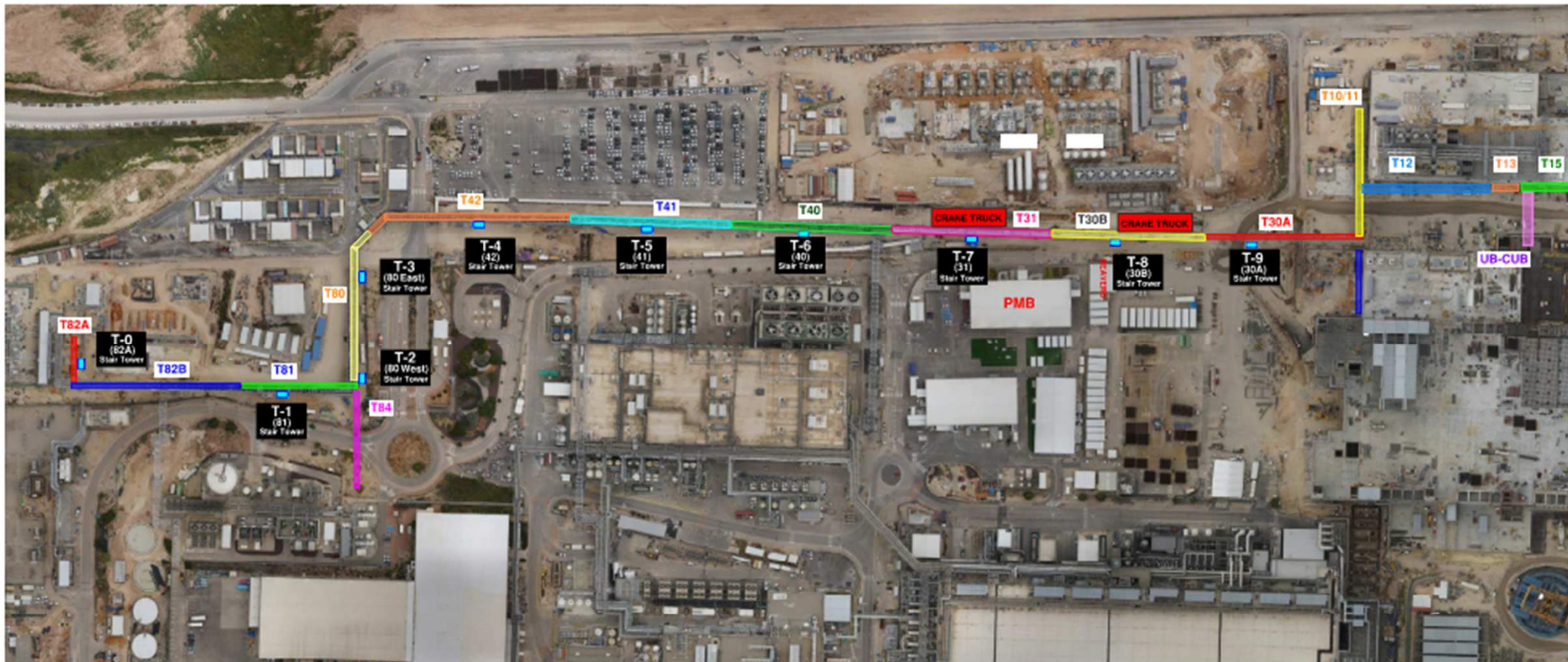
# CUB 2 – EXTERIOR/ROOF







**HOFFMAN CONSTRUCTION COMPANY**







**HOFFMAN CONSTRUCTION COMPANY**



# Daily Coordination Meeting

Site Logistics

North Entry



**GATE B**

Road from CUB1 to Gate B closed  
at night (1700-0500) from 2-Feb  
through 6-Feb for utility install.

**CUB1**





# Daily Coordination Meeting

## Site Logistics North







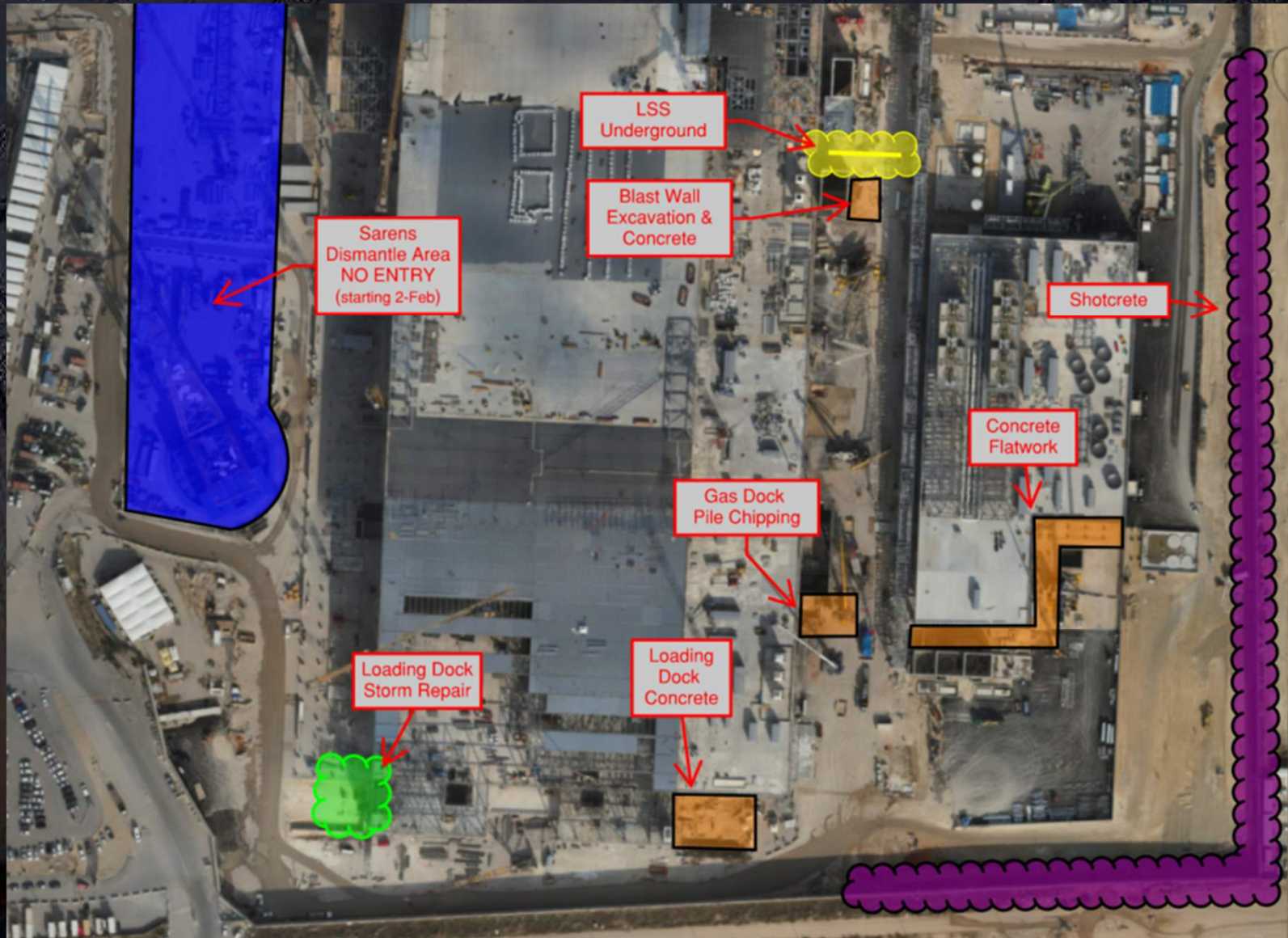
**HOFFMAN CONSTRUCTION COMPANY**



# Daily Coordination Meeting

Site Logistics

South





# Hit the Red Render it Dead

- Equipment that is not being actively moved, needs to be prevented from being accidentally moved.
- This is especially important for our MEWPs, as accidental movement can cause an employee to get pinched or struck by the obstacles around the equipment, or people on the ground can be hit by the equipment.
- Hit the red refers to the emergency stop button. If the equipment does not have one of these, the same effect can be achieved by turning the equipment off.
- This is not an optional program on this site, please talk about this with your crews. As more and more systems and obstructions are installed, we are at a greater risk of someone being injured if their equipment moves unintentionally.



# Daily Coordination Meeting



14:00 Sign In