

Daily Coordination Meeting



Daily Coordination Meeting

General Topics:

- Little things matter- get out in the field.
- MEWP use- not even trying.



Sami N
5E WC'S re-fill
SK
Ready for PT above ground

ELRAM
TTNE WC + Break room
Ongoing

CARMEL DUCT
Scaffold demo
Finish 4/21

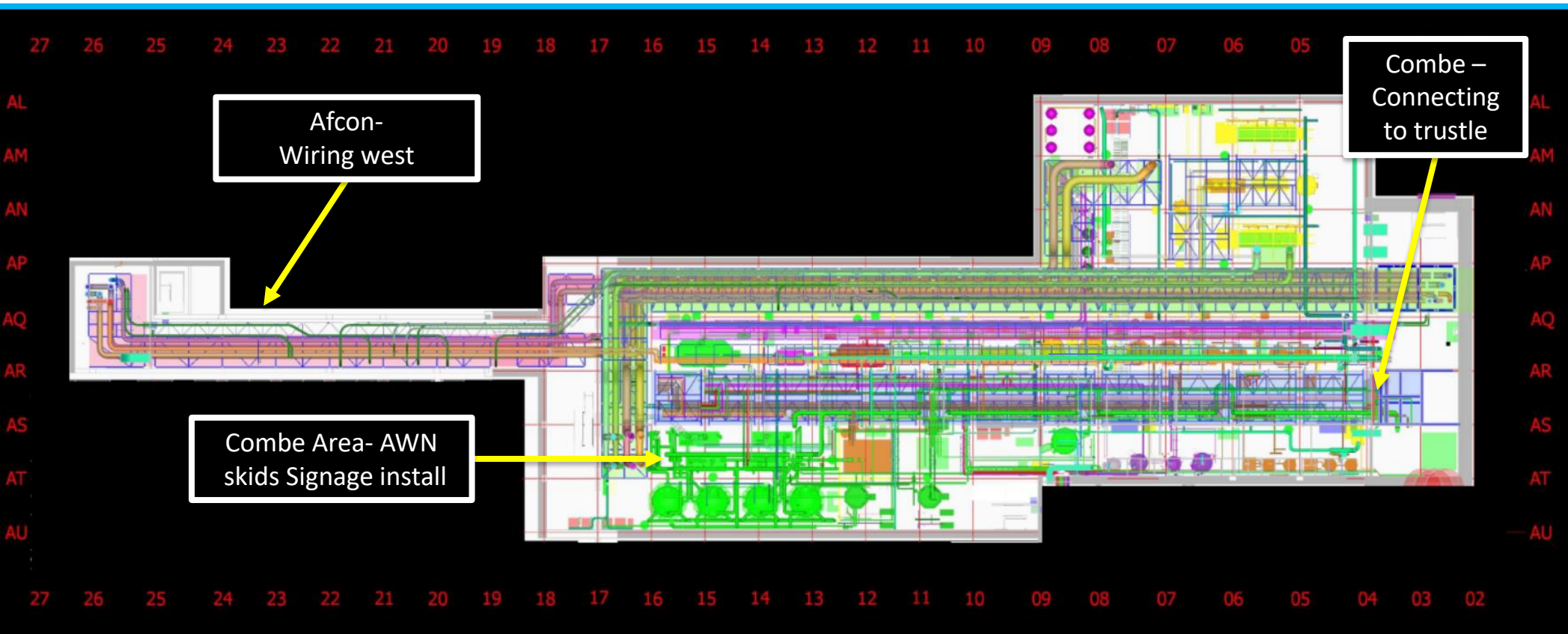
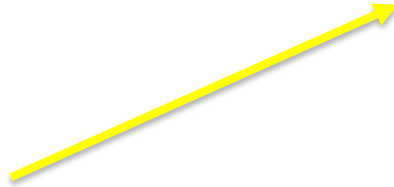
SK
Installing safety showers at
PCD Bathtub



HOFFMAN CONSTRUCTION COMPANY



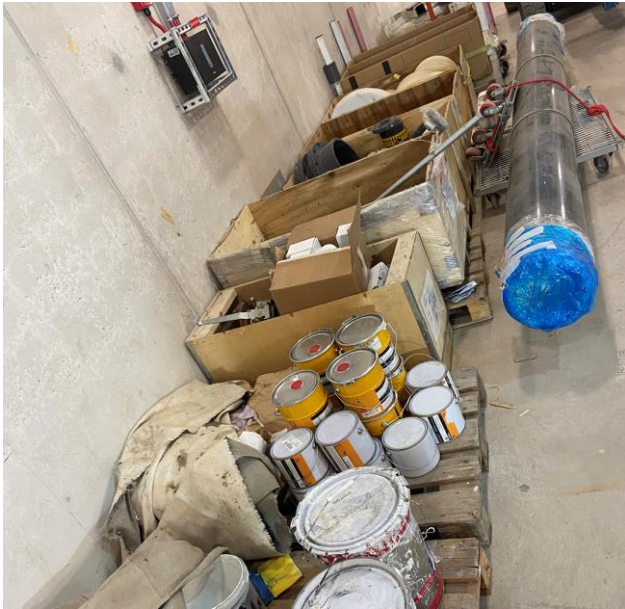
SUT 38.1 LEVEL



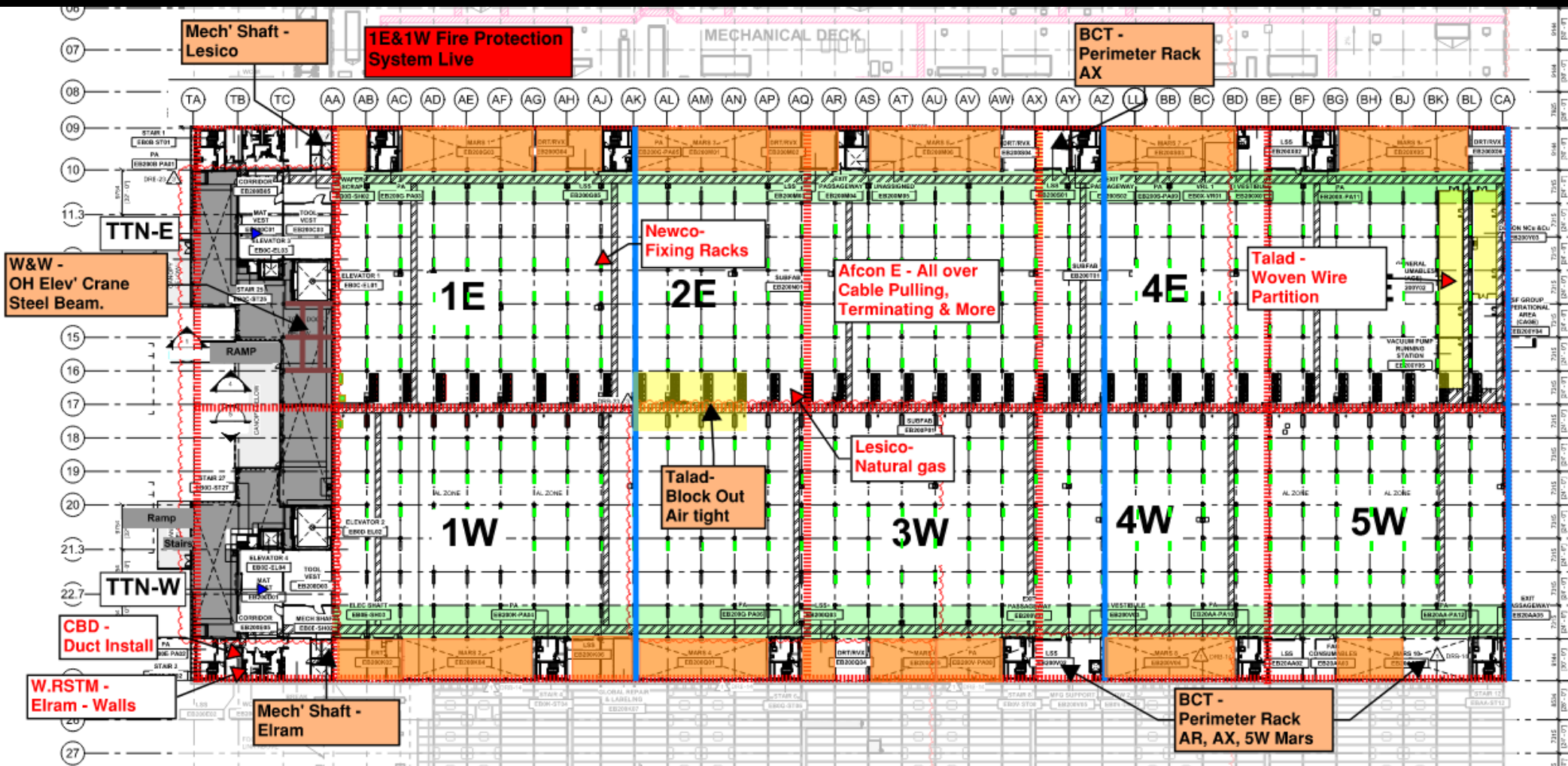


**Evacuate materials not enough !!!
On Wednesday 23 th
Job service cleanup & evacuate
unapproved materials to the dumpster**

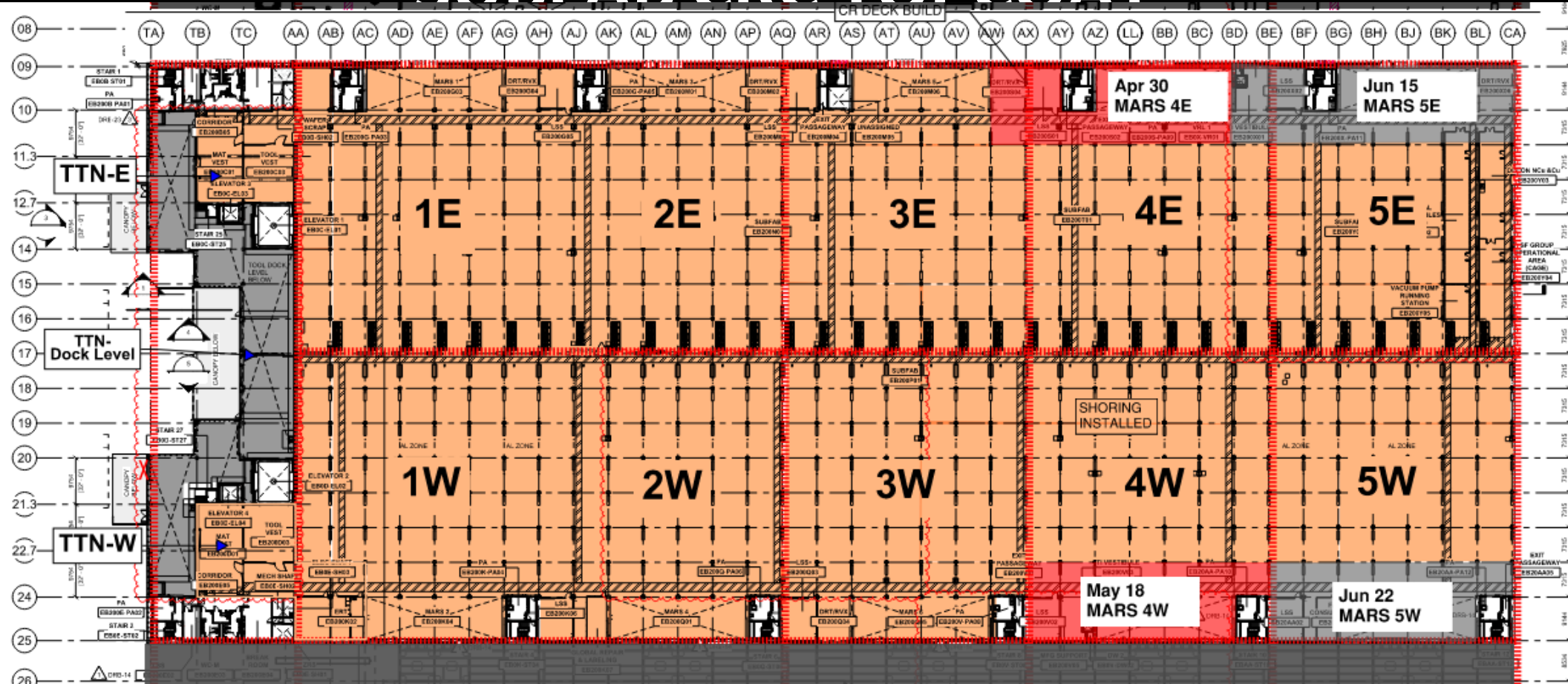


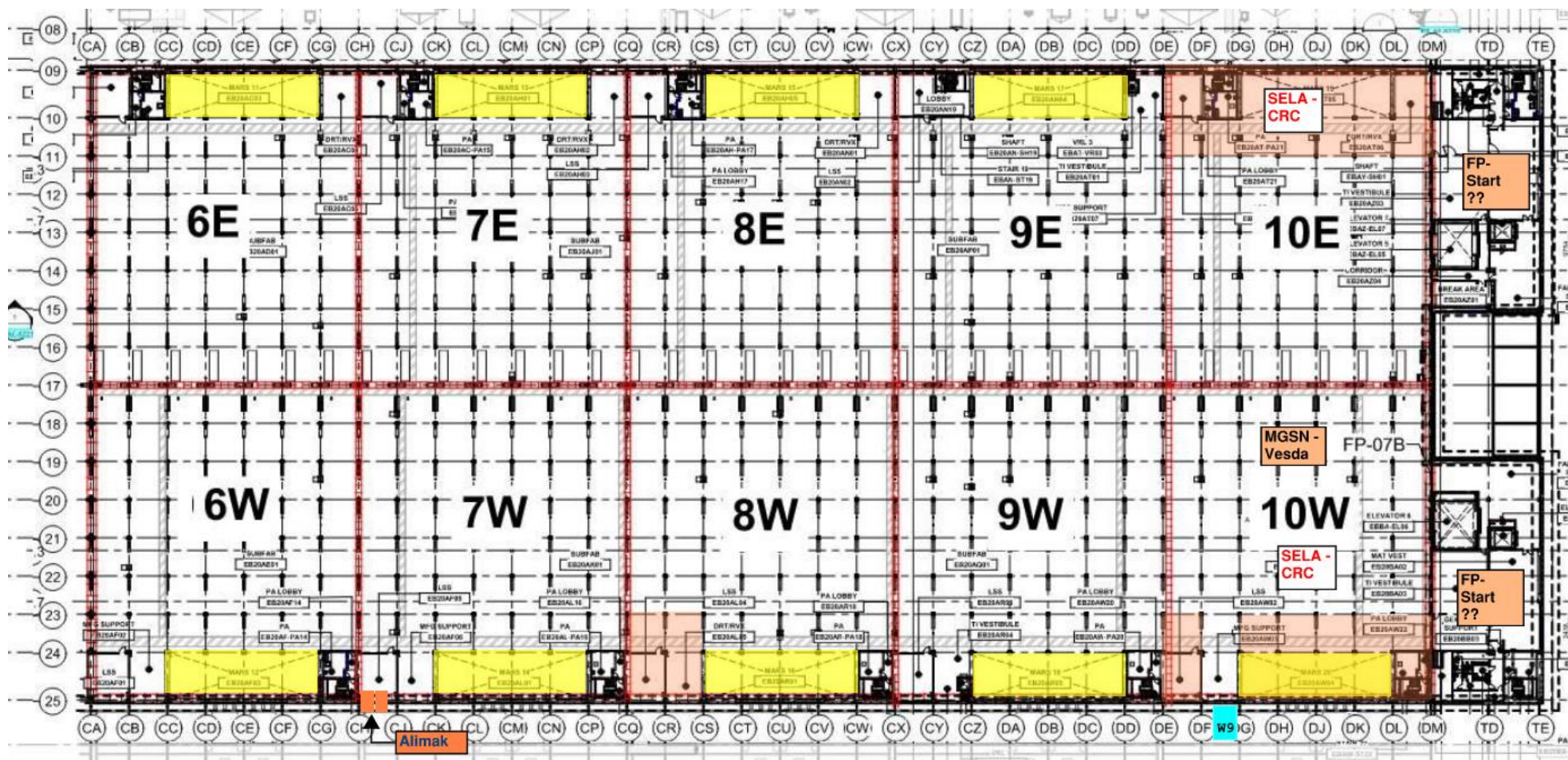


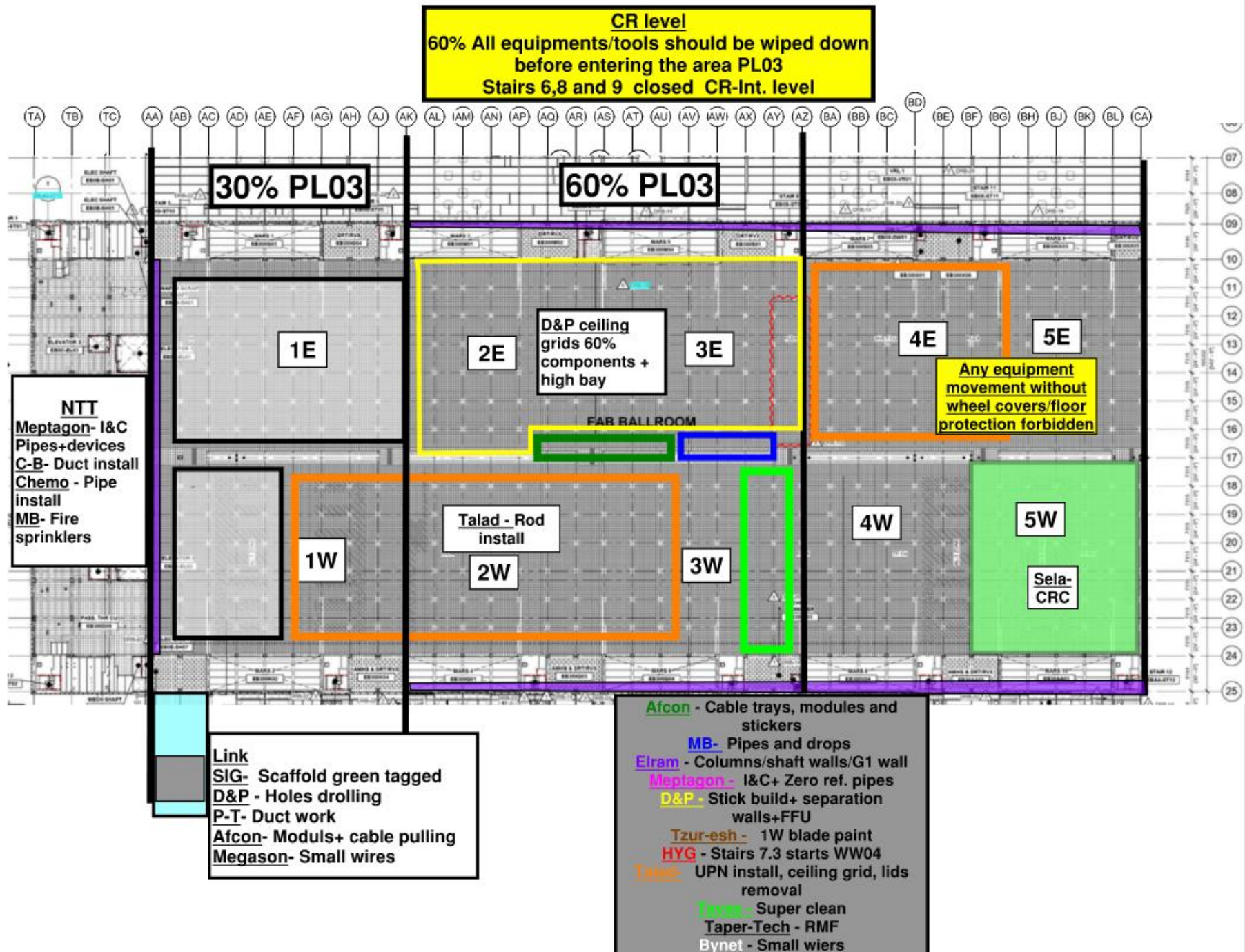
SUBFAB BUILDOUT MOD 1

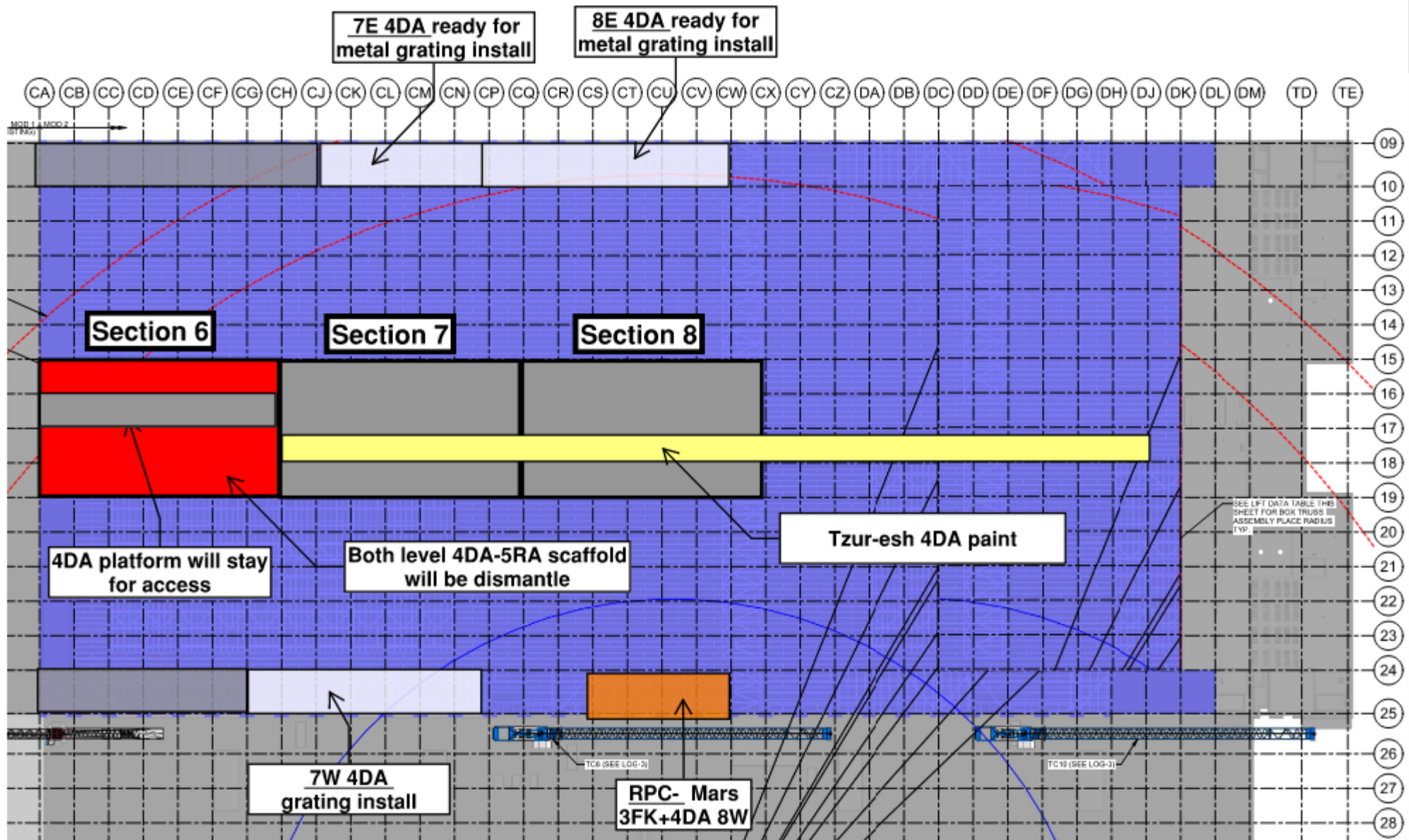


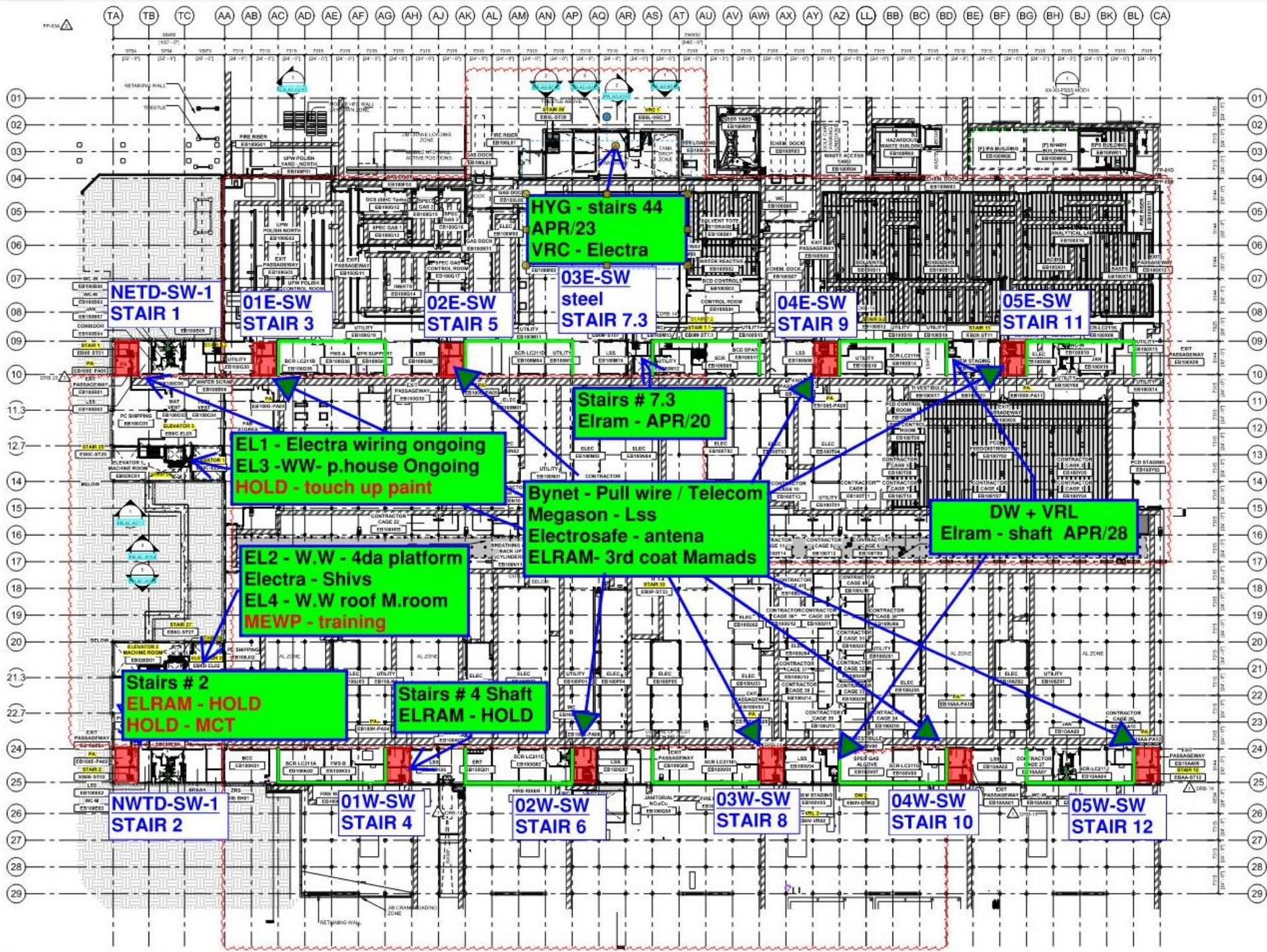
SURFAR CRC TOPCOAT



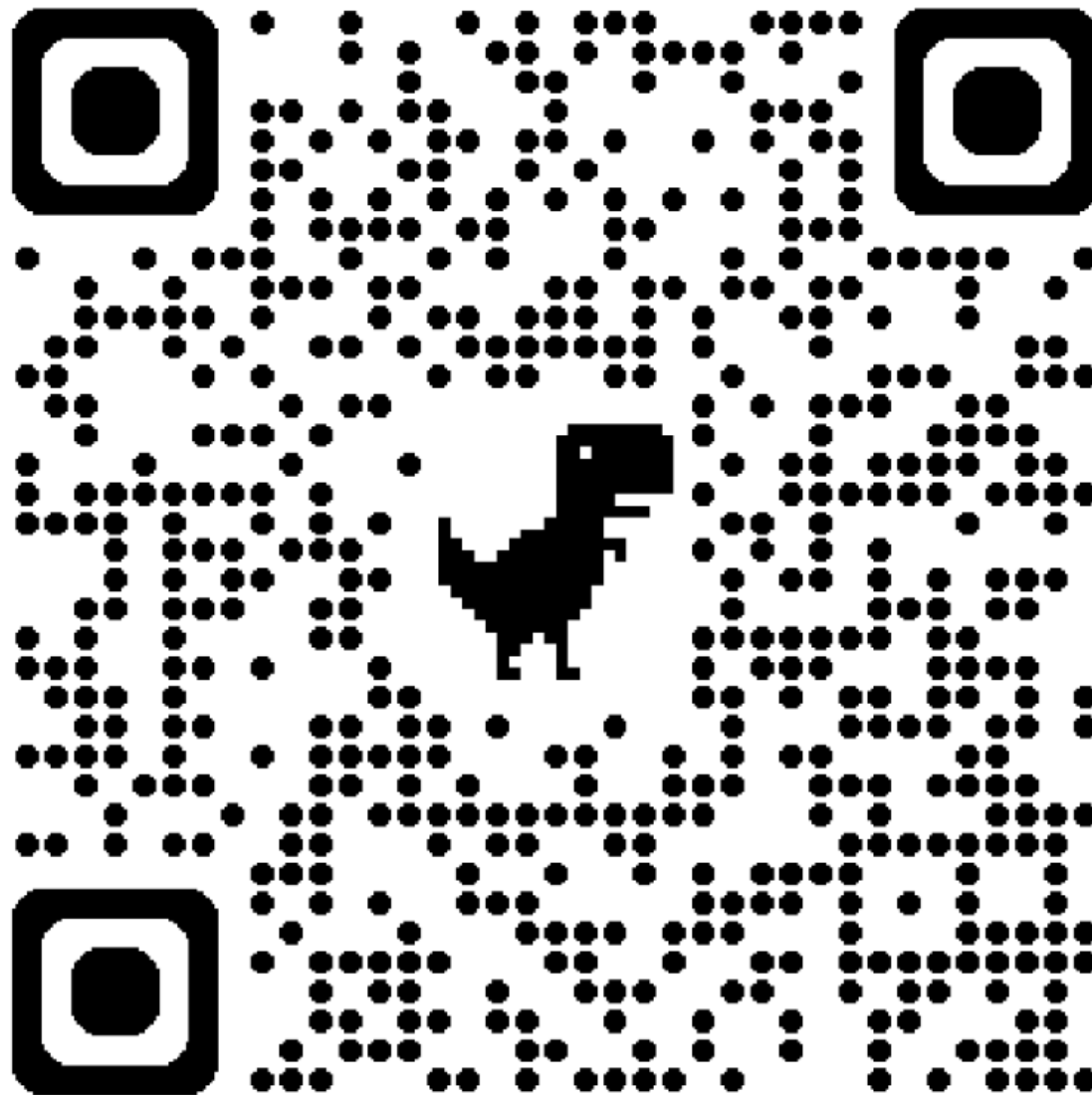




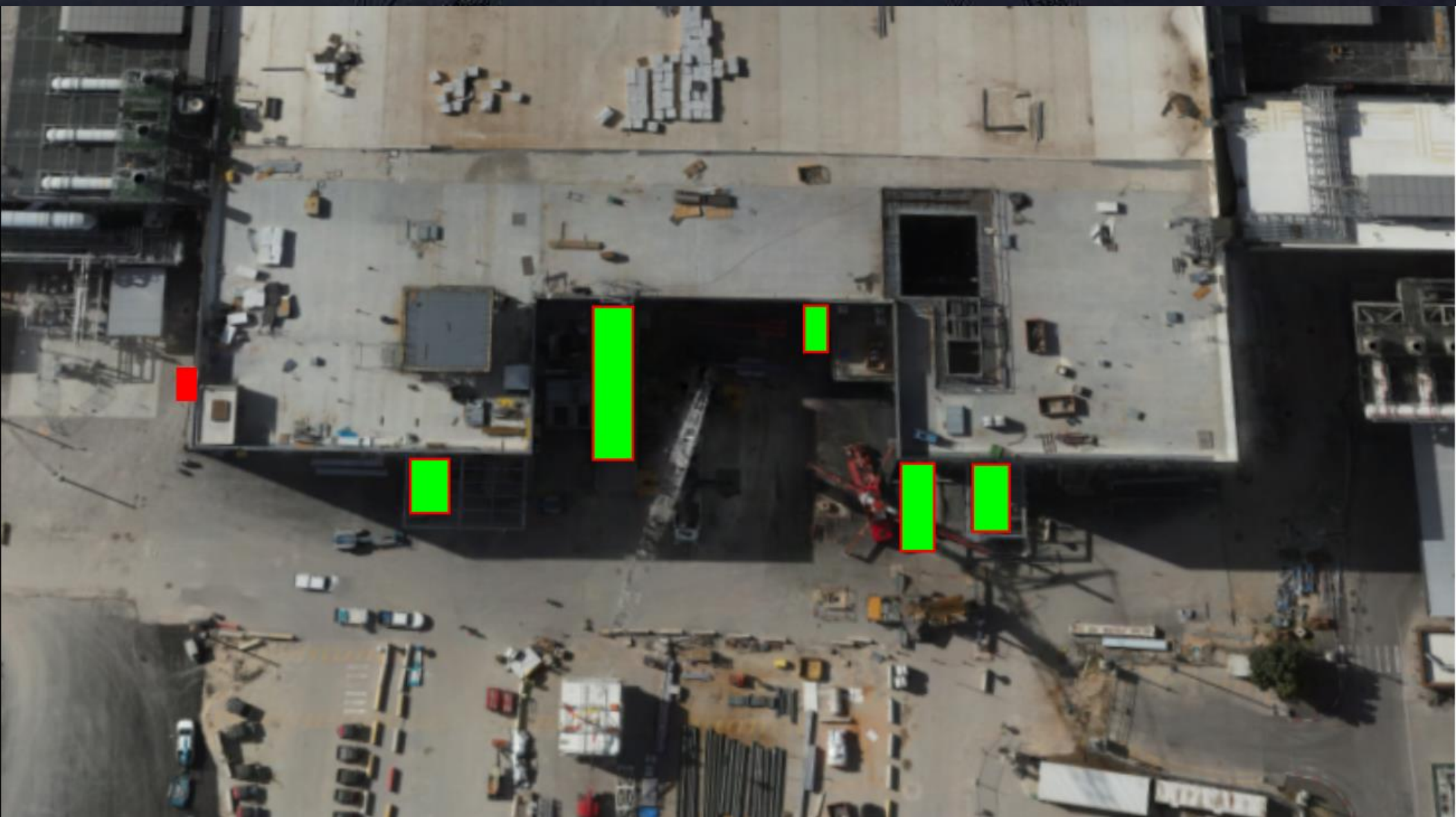




Request Form



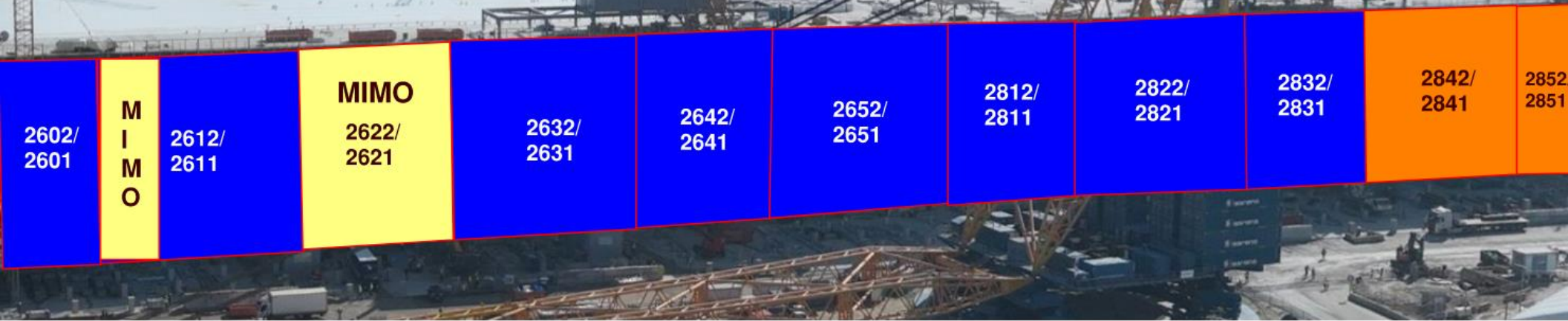
Subcontractor must fill out and submit all required cells in order to get a penetration cut through the siding.





- READY FOR GIRTS
- INSTALLING GIRTS
- READY FOR PANELS
- PANELS INSTALLED

MOD 2 WESTSIDE GIRTS/SIDING



MOD 2 EASTSIDE GIRTS/SIDING



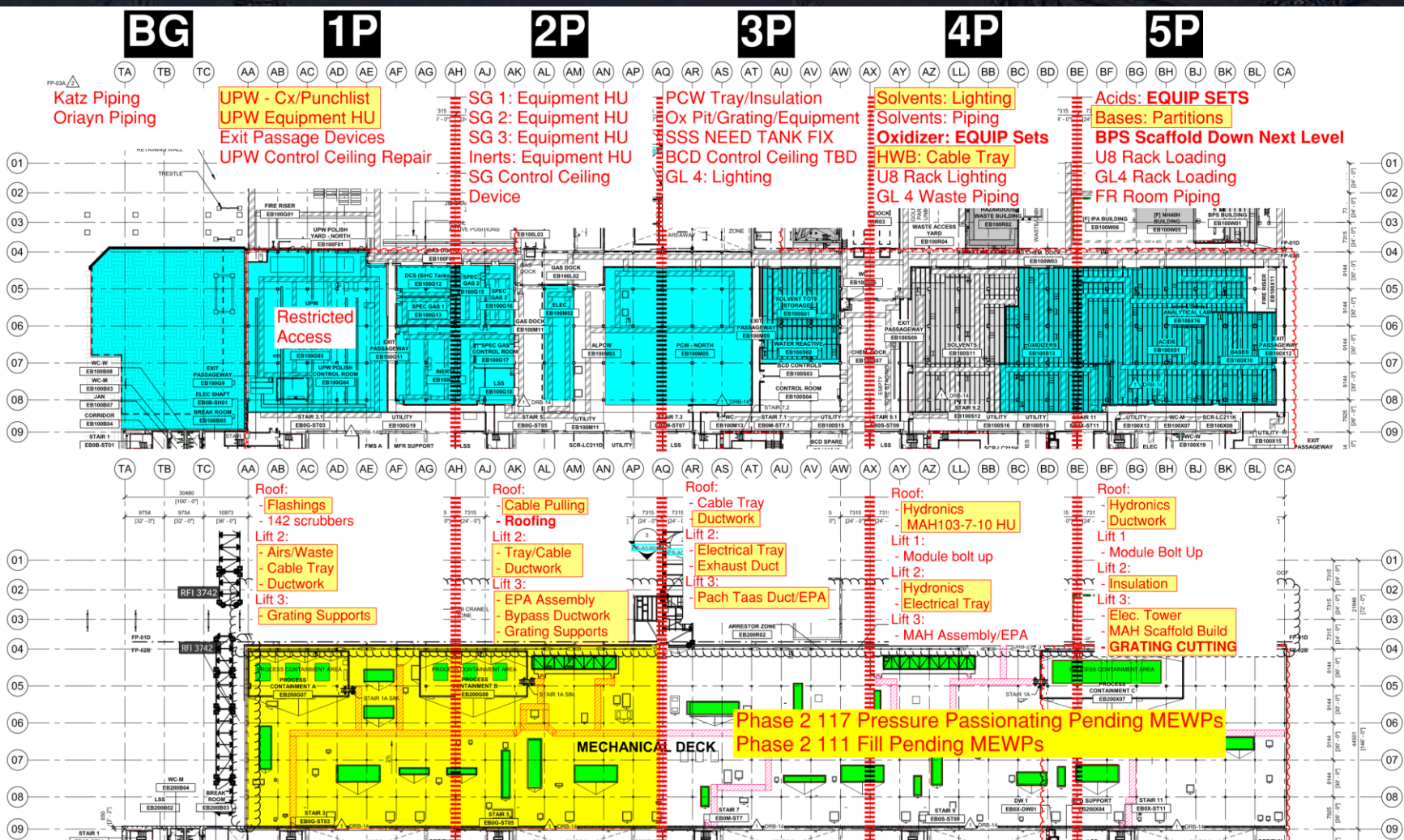
2752/ 2751	2742/ 2741	2732/ 2731	2722/ 2721	2712/ 2711	2552/ 2551	2542/ 2541	2532/ 2531	2522/ 2521	2512/ 2511	2502/ 2501
---------------	---------------	---------------	---------------	---------------	---------------	---------------	---------------	---------------	---------------	---------------

READY FOR GIRTS	
INSTALLING GIRTS	
READY FOR PANELS	
PANELS INSTALLED	

PSSS.1

Utility Level 1YA

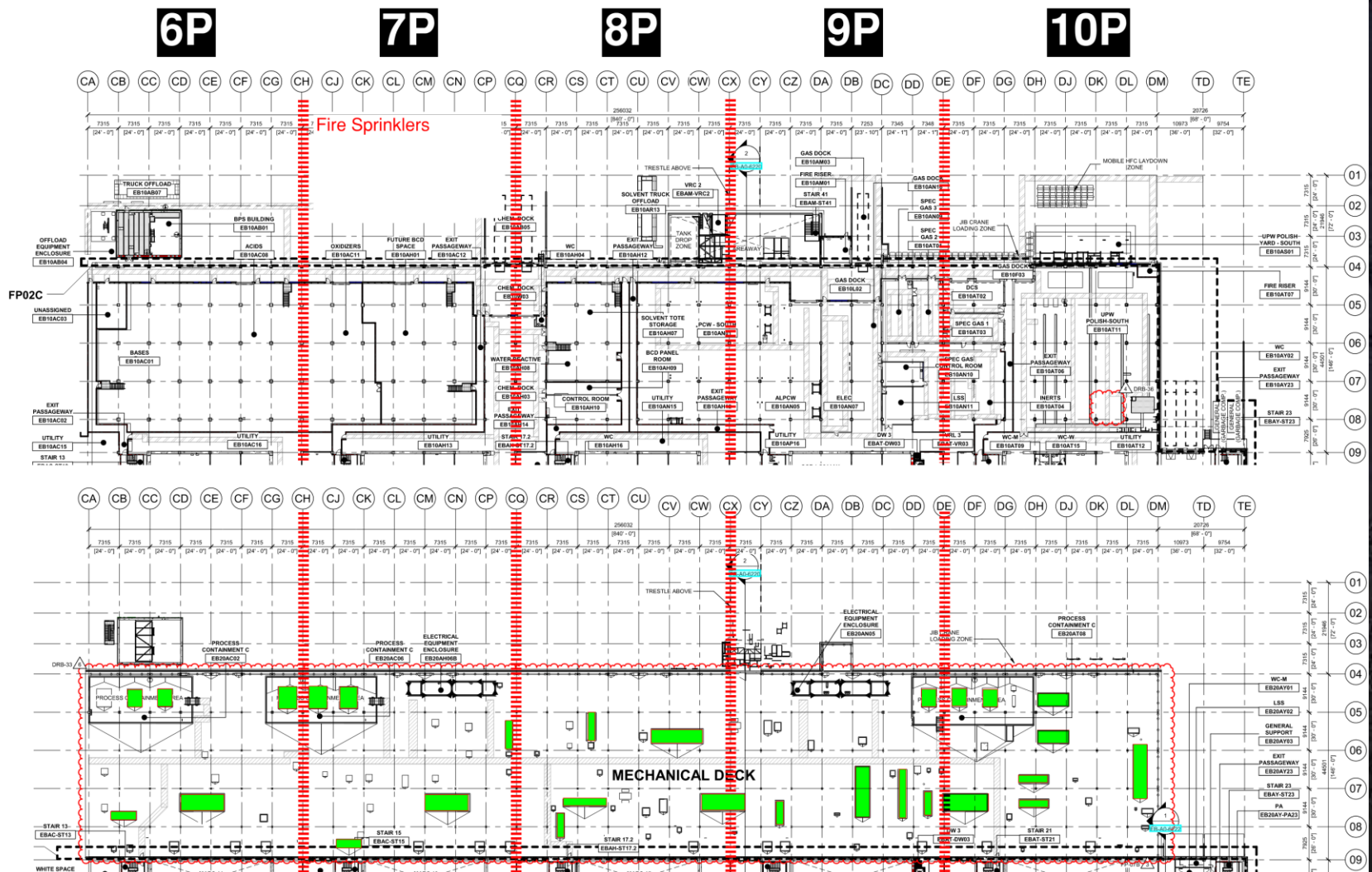
PSSS Roof 2SA



PSSS.2

Utility Level 1YA

PSSS Roof
2SA

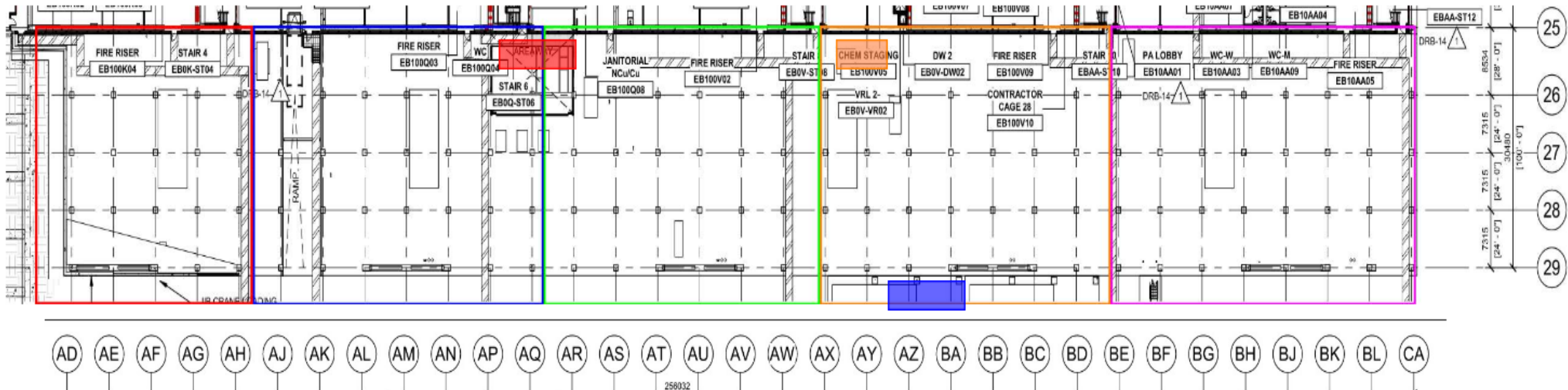




WJG – UL

* Carmel Bidud - erection of
scaffold in the west SUT

* Carmel Bidud - measurements
for final duct connections to FAB
*Lesico - welding and grouting pipe
support



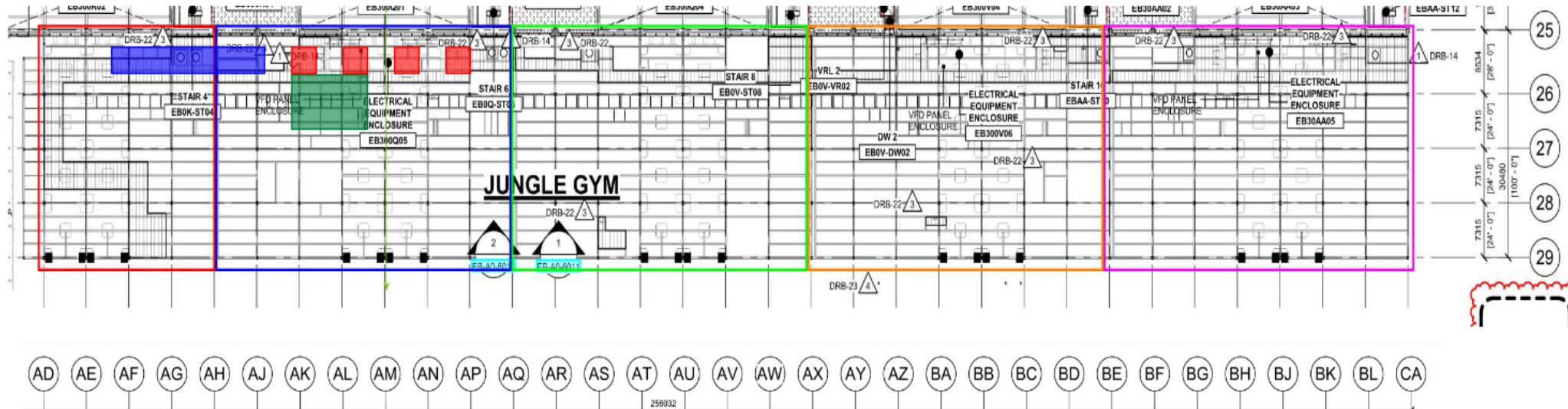


WJG – Lift 2

* Taper tech - fixing planking after stiffeners installation

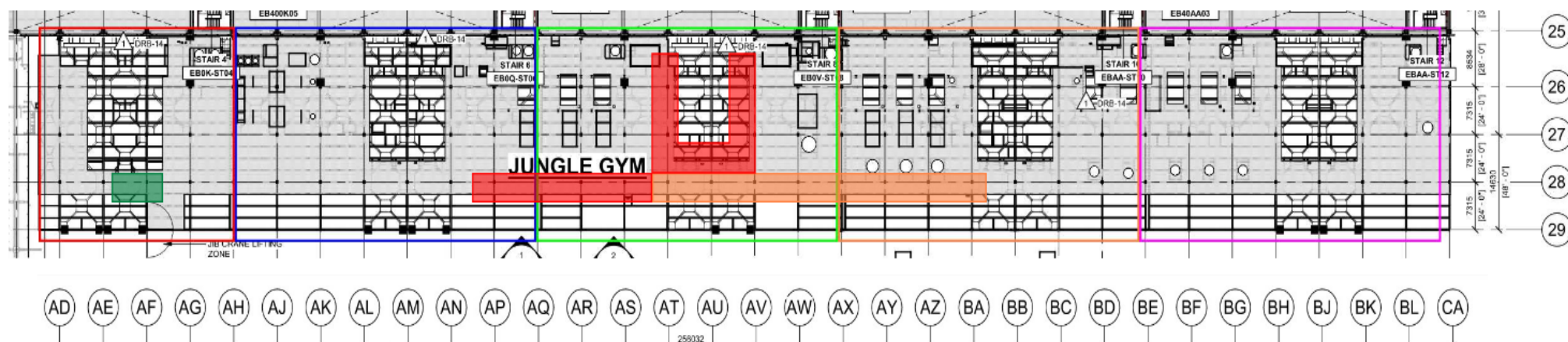
* Chemo - finished restoration on UPN 113
* W&W - welding stiffeners

* SK - working on connections to MAH
* Afcon - installation of cable tray underneath MAH and finishing cable pulling to VFD



* SN - installing and welding penetrations supports

- * Taper tech - performing planking penetrations and removing ramps for permanent handrails
- * SN - handrails installation



Crane logistics

Crane: 750 ton crane
moved south of RCTO
Tuesday 15/04/25.
waiting for crane to
start 5J equipment set
(Pach Taas) on
20/04/25

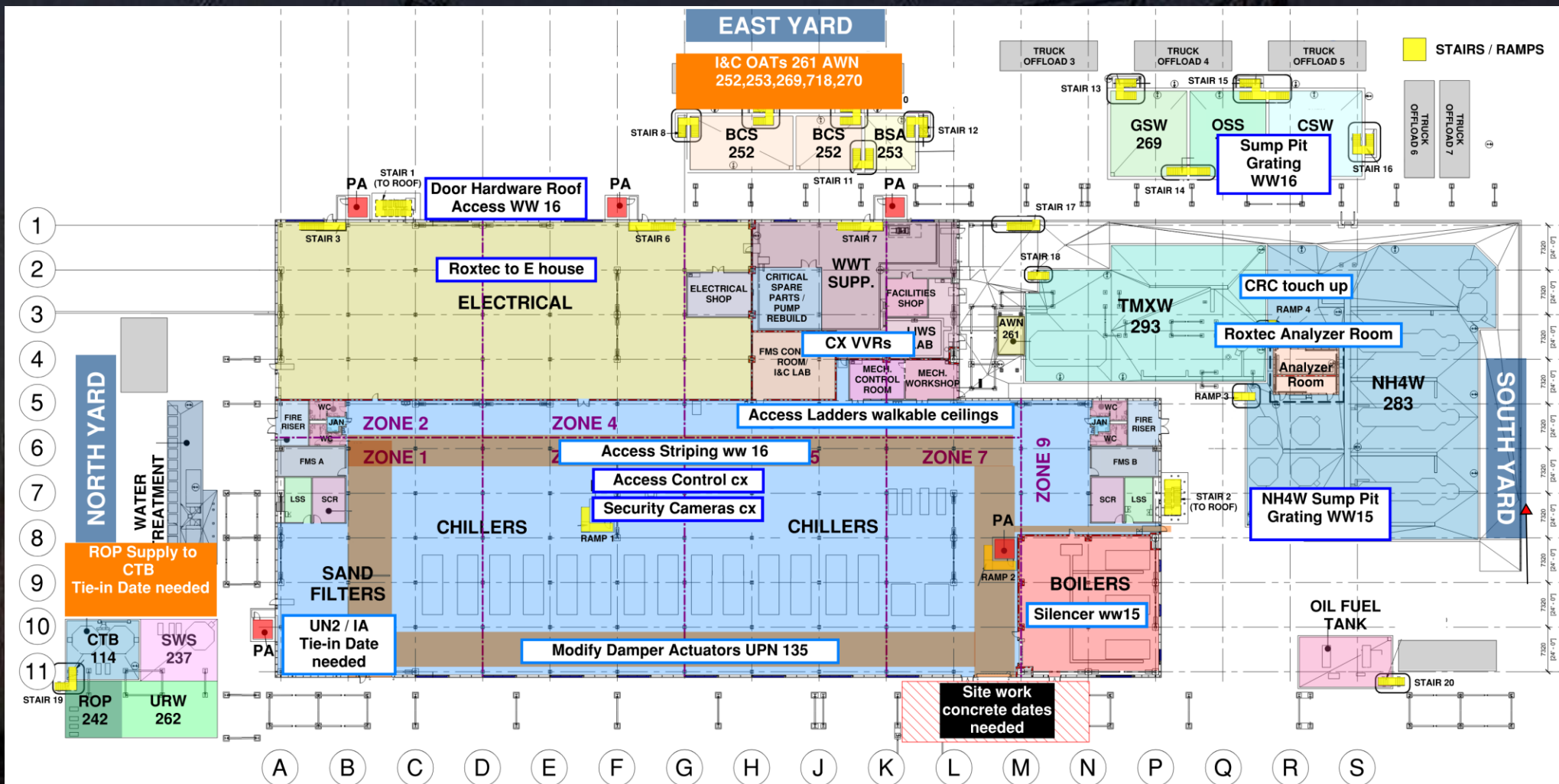


CUB 1 Ops Ready April 29



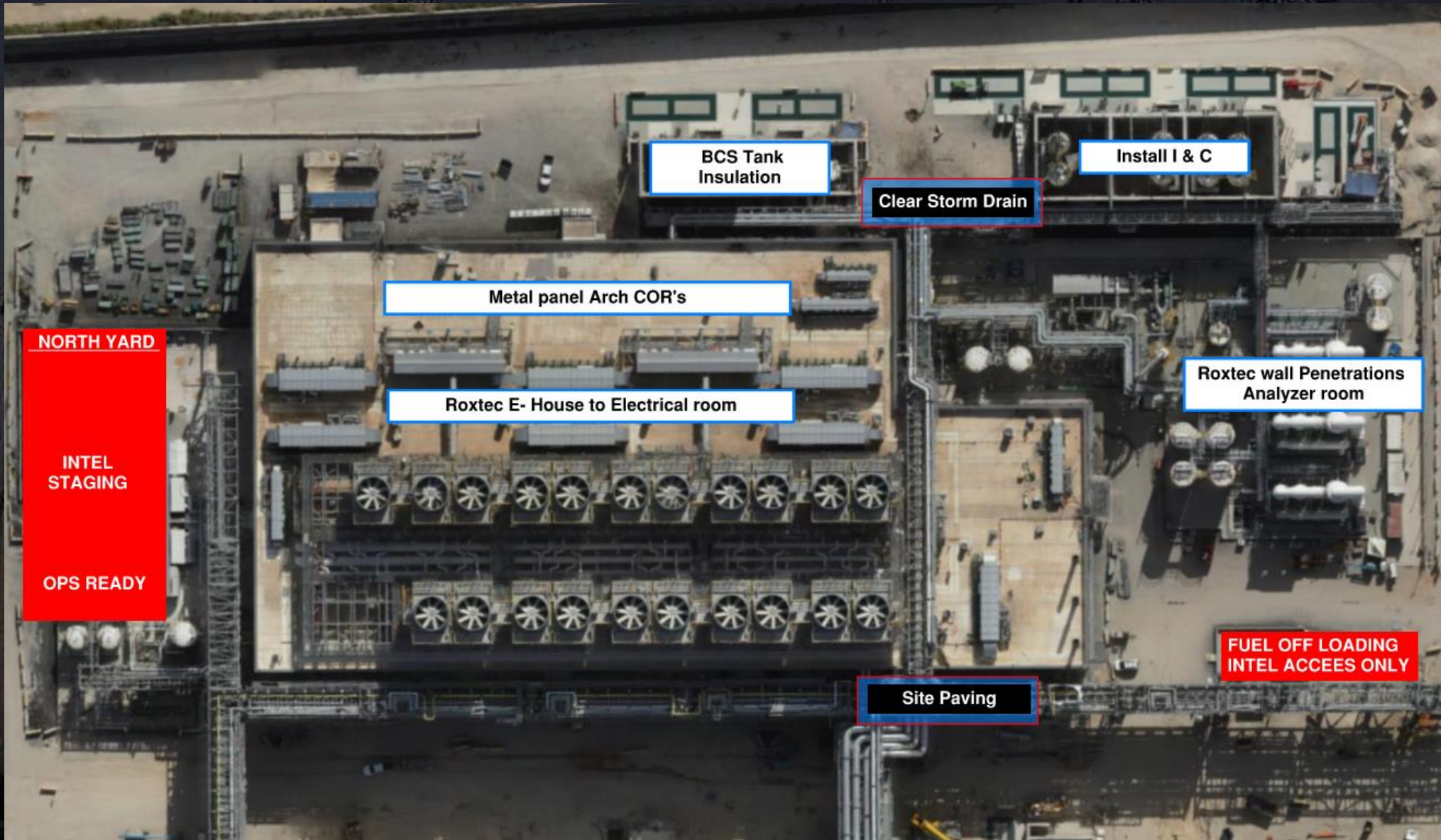


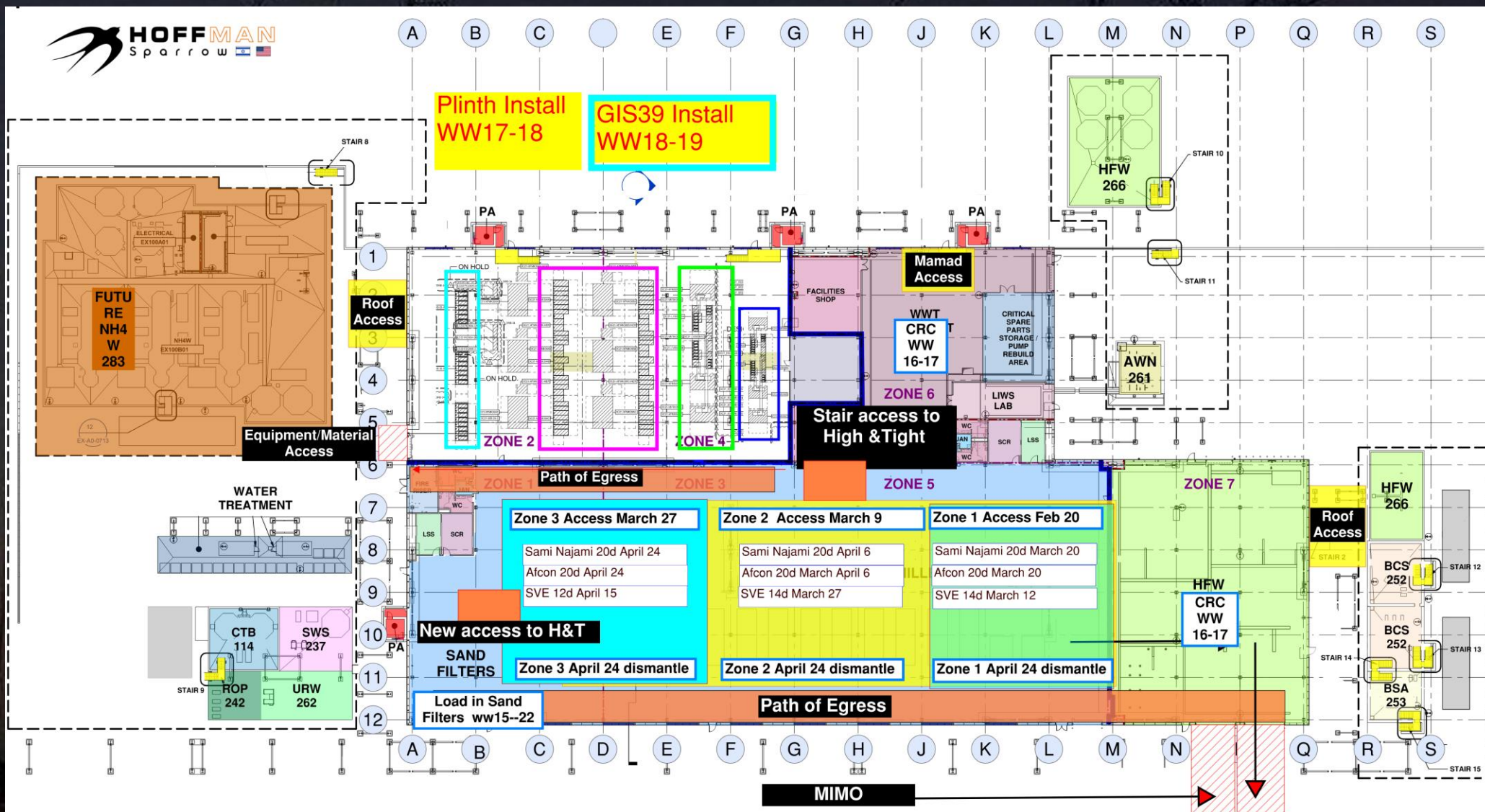
CUB 1



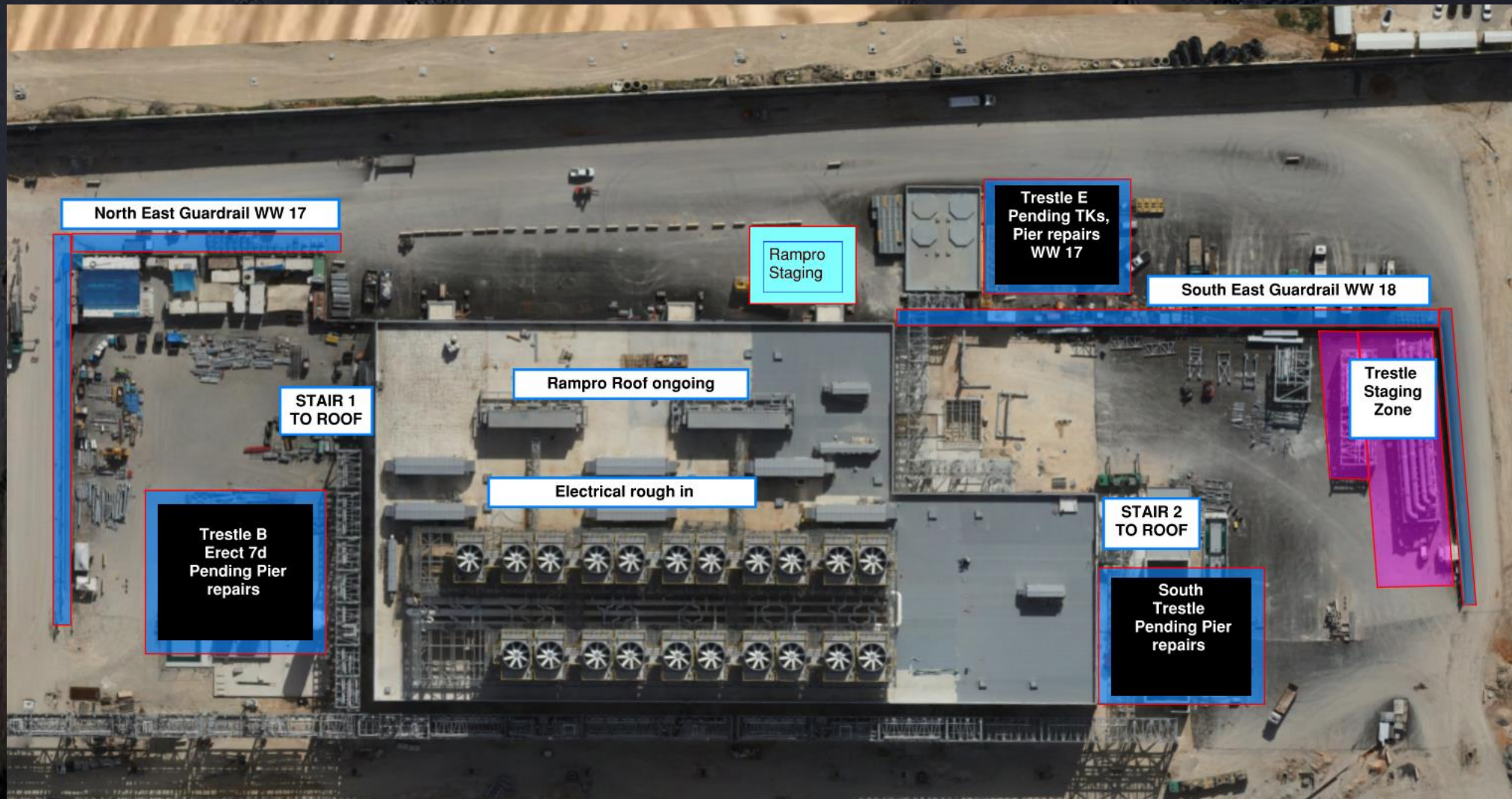


CUB 1 – EXTERIOR/ROOF





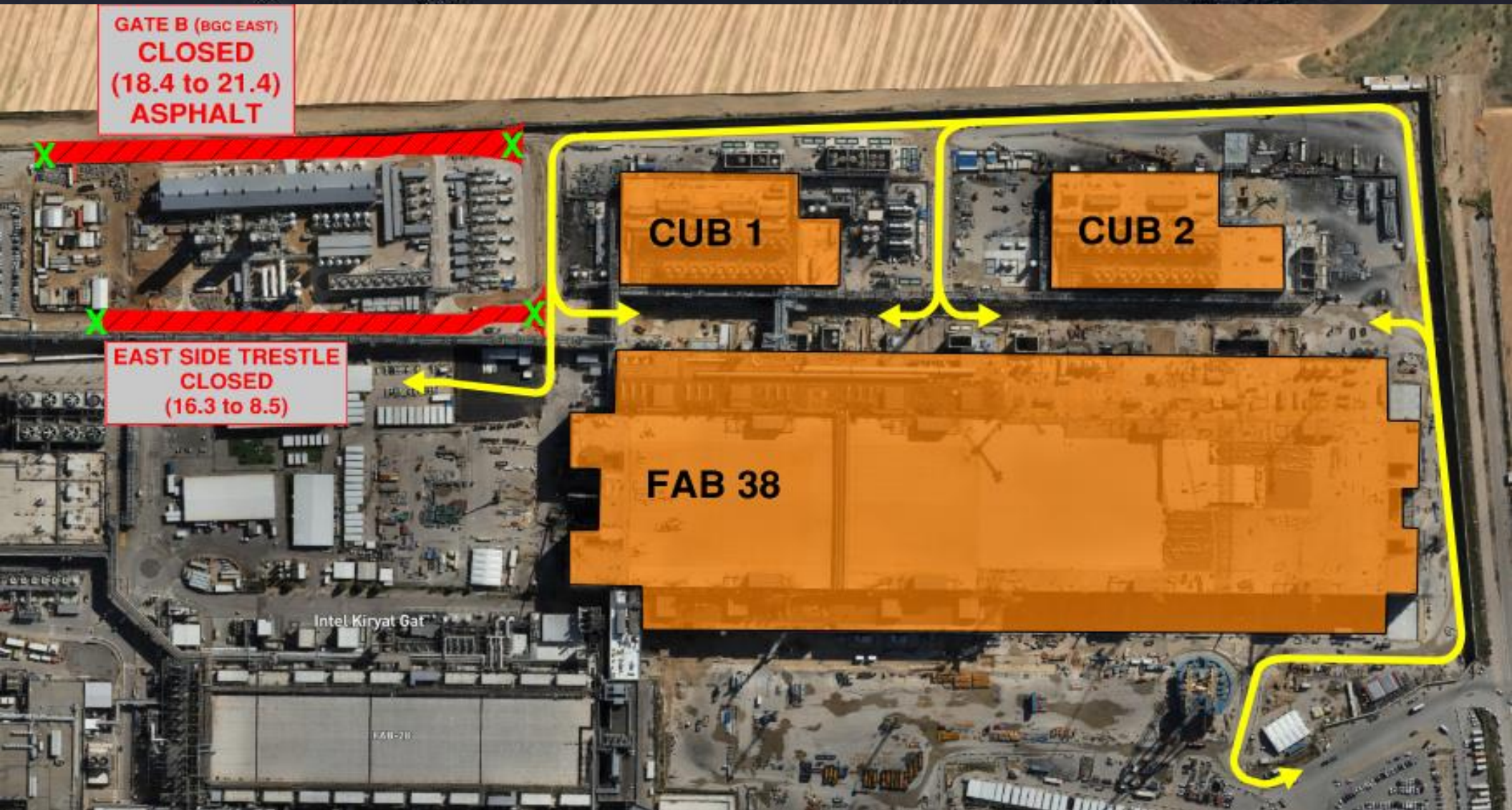
CUB 2- Trestles/Roof/Guardrails





Daily Coordination Meeting

Site Logistics



Daily Coordination Meeting

Site Logistics: North



Daily Coordination Meeting

Site Logistics: South



Daily Coordination Meeting

MAMAD Locations

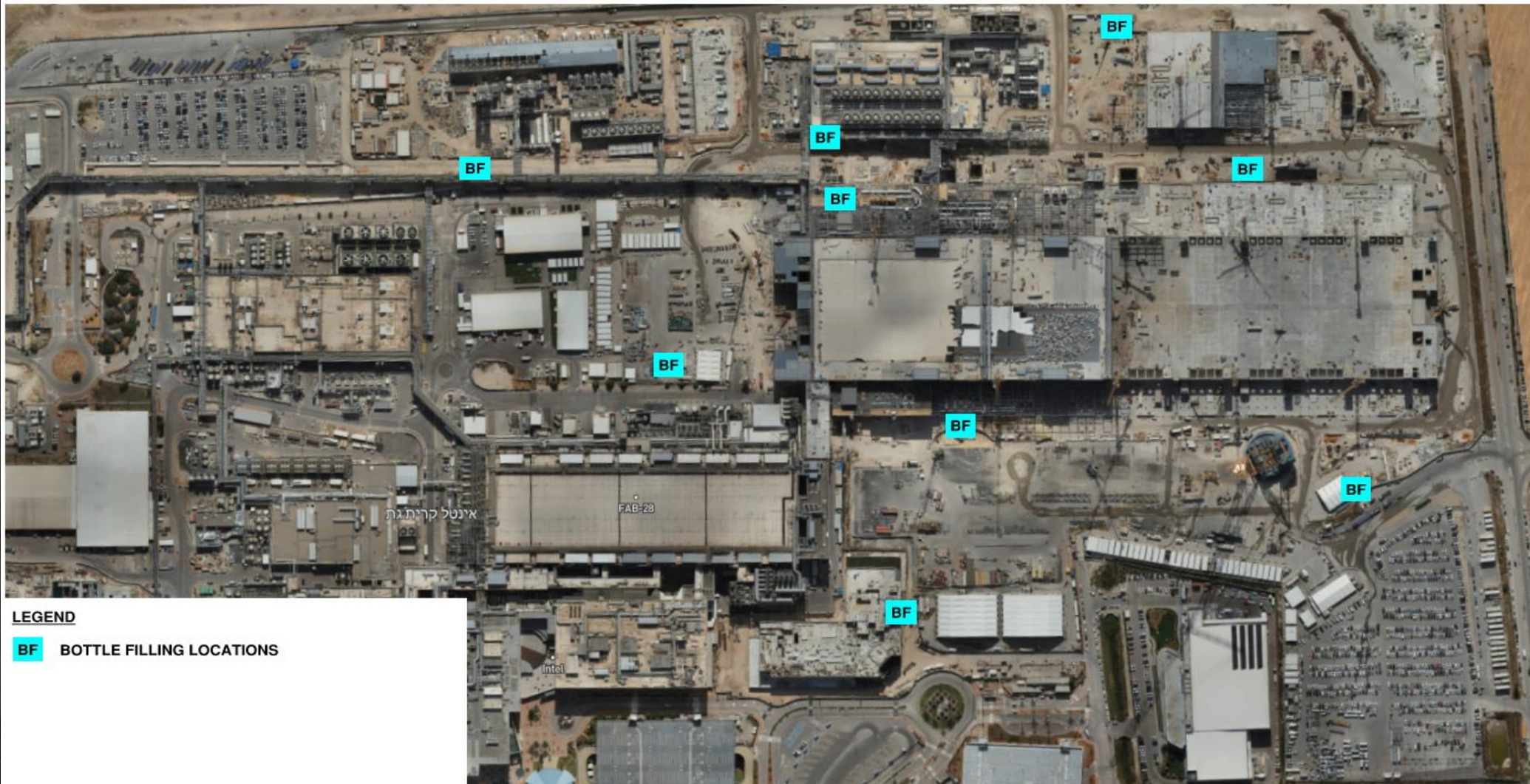
MAMAD LOCATIONS (19-March-2025)
■ LARGE
■ SMALL
■ BUILDING



Daily Coordination Meeting

WATER BOTTLE FILLING STATIONS

WATER BOTTLE FILLING STATIONS





BACK TO MEWP WORK

MEWP inspections:

- Talk to your subs.
- Get with your safety team and management.
- Get out to the field.
- Help your teams to go back to work!

WE CAN'T DO YOUR WORK FOR YOU!

Hot weather:

Be prepared – water stations, heat illness symptoms, etc.

BACK TO MEWP WORK

1. Documentation available on the equipment in the field:

- I. Equipment registration document (Rishayon).
- II. Valid Bodek inspection report (Tasker) – must be valid within 6 months of inspection.
- III. Equipment insurance document (Bituach). The identification number for this equipment must be written in the insurance.
- IV. Supplier inspection report – signed and available for review.
- V. Supplier training certificate for equipment operation.
- VI. 18C designation letter listing approved operators and spotters for the specific equipment.
- VII. Equipment manual – must be available in Hebrew and in the language of the operator (QR code acceptable for one language).

2. Equipment marking:

Each MEWP must be clearly marked with:

- I. The company name.
- II. A printed list of approved operators and spotters assigned to that equipment.

BACK TO MEWP WORK

3. Intel MEWP Checklist:

Must be fully completed and signed for each piece of equipment and ready for review in the field.

4. Intel MEWP Assessment:

Must be available in the field and ready for review.

5. Visual Inspection of the MEWP:

- I. All handrails and doors must function properly and be free of damage.
- II. MEWP oil diapers must be properly installed. No red/yellow ropes or wires are permitted.
- III. No temporary or improvised fixes are allowed on any operational system.
- IV. The MEWP must be clean, including the operator's remote control.
- V. Please make sure all items are ready before the scheduled inspection.

Daily Coordination Meeting



14:00 Sign In