

Daily Coordination Meeting



14:00 Sign In

Daily Coordination Meeting

General Topics:

- Power in Fab this week- 33kv
- Buggy stickers (see QR code)



Responsible Person's Name *

Orange Badge Number *

ID *

Company *

Phone Number *

Does the buggy have a buggy whip/flag? *

This is required to be on the buggy. Submit photo below.

Does the buggy have a company sign on it? *

This is required to be on the buggy. Submit photo below.

Does the buggy have a shakalaka (amber strobe) light? *

This is required to be on the buggy. Submit photo below.

Email Address- Must Be a Company Email *

The email cannot be a gmail, yahoo mail, or anything other public email. It must be a company email.

License Plate Number *

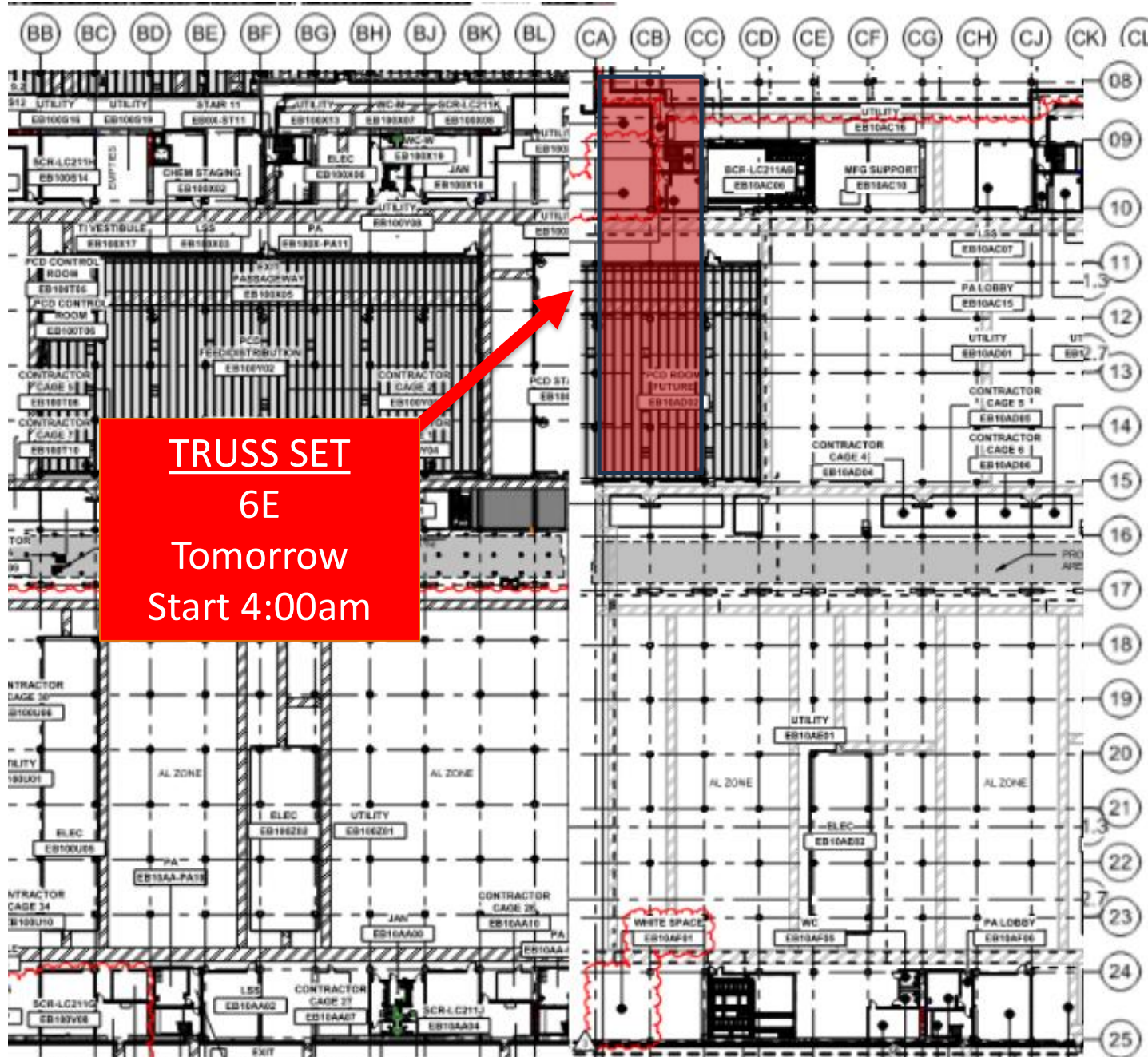
Comments from Requester

Upload Picture of Buggy- Including the whip, sign, and strobing light *

Picture should show all 3 elements.



UTILITY LEVEL MOD2





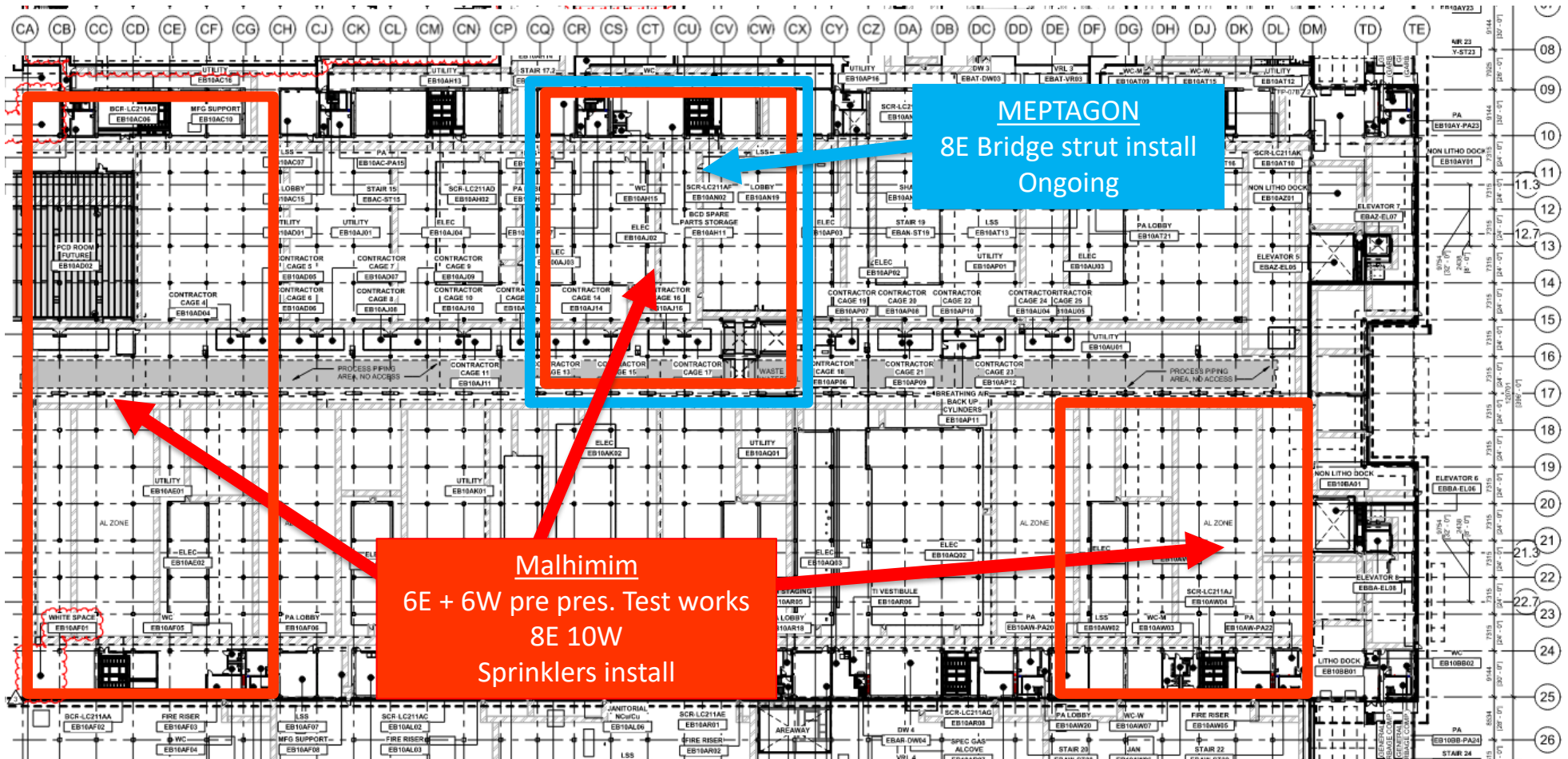
COMBE
Waste pipes at PCD
Bathtub

Belfor
LSS TTNE
BCR west
Break room west

ELRAM
FMS rooms Ongoing
BCC room Finish 8/7th
PCD Bathtub walls

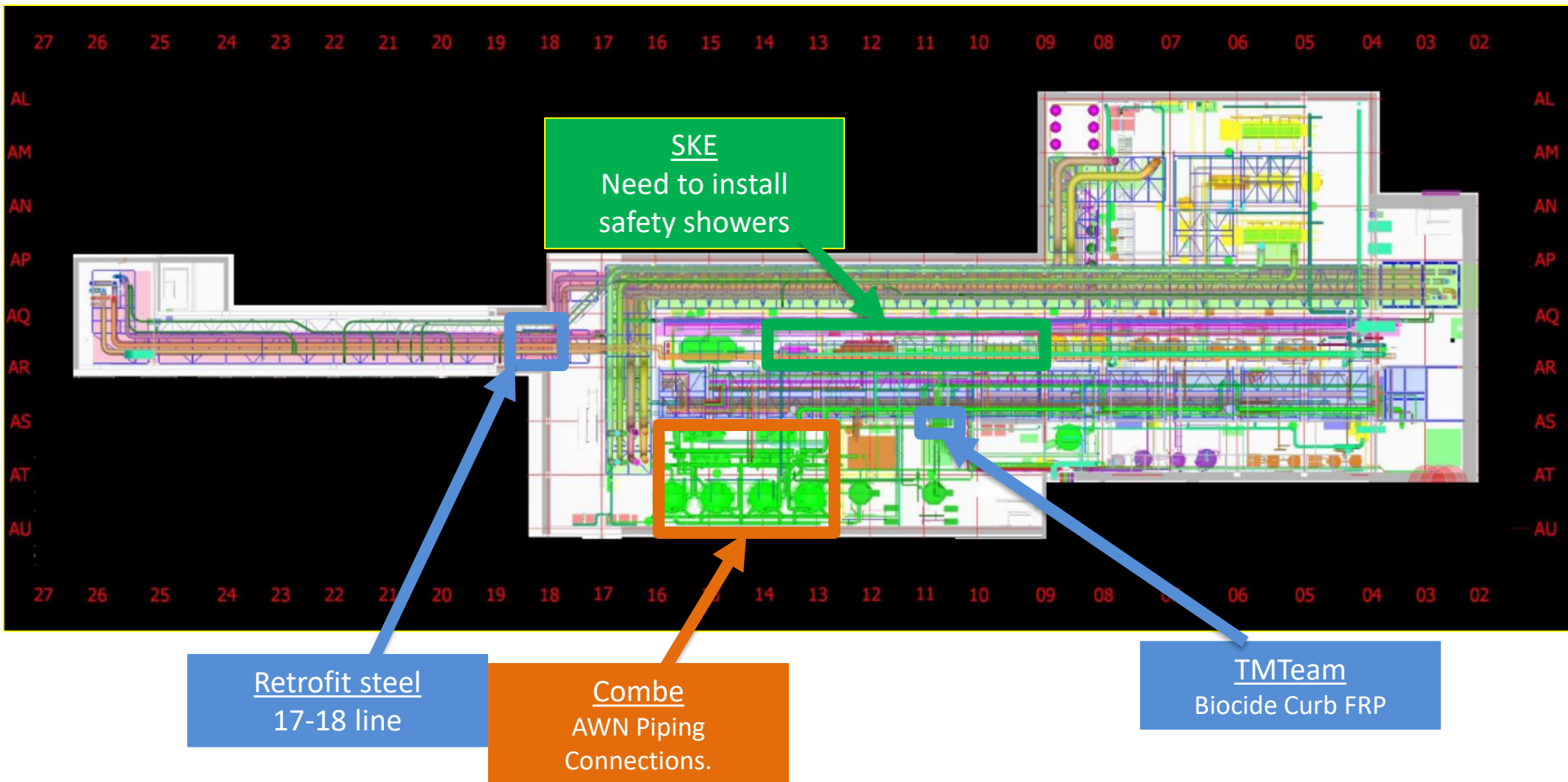


UTILITY LEVEL MOD2



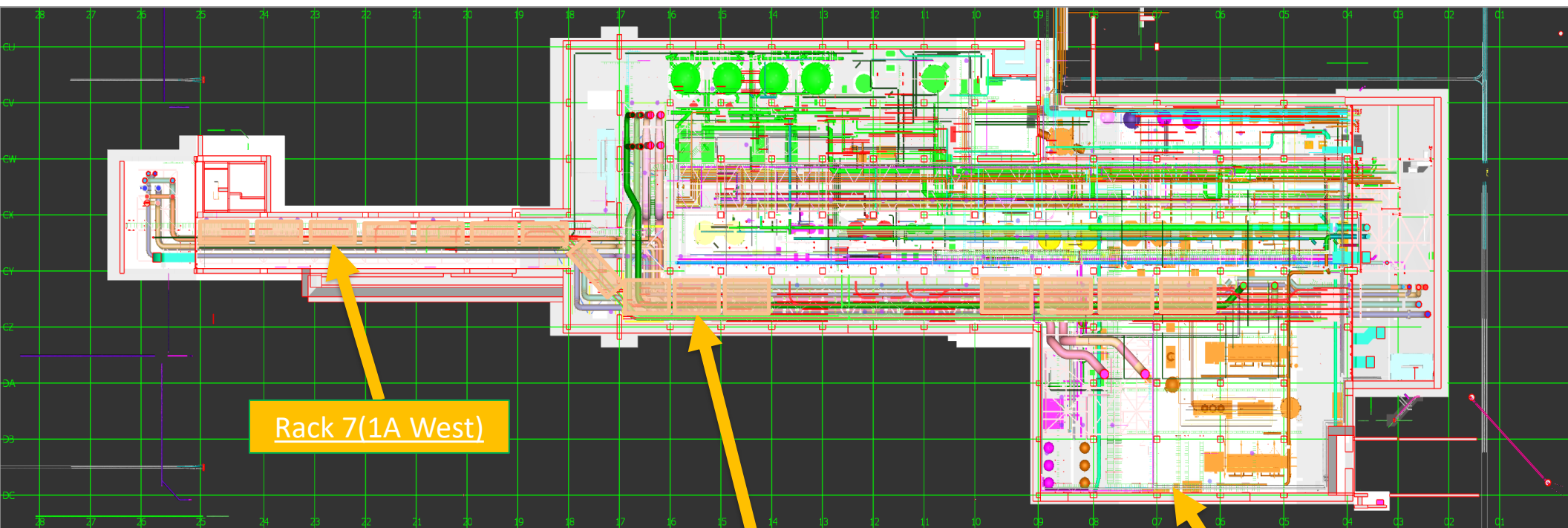


SUT 38.1 LEVEL





SUT 38.2 LEVEL



Rack 7(1A West)

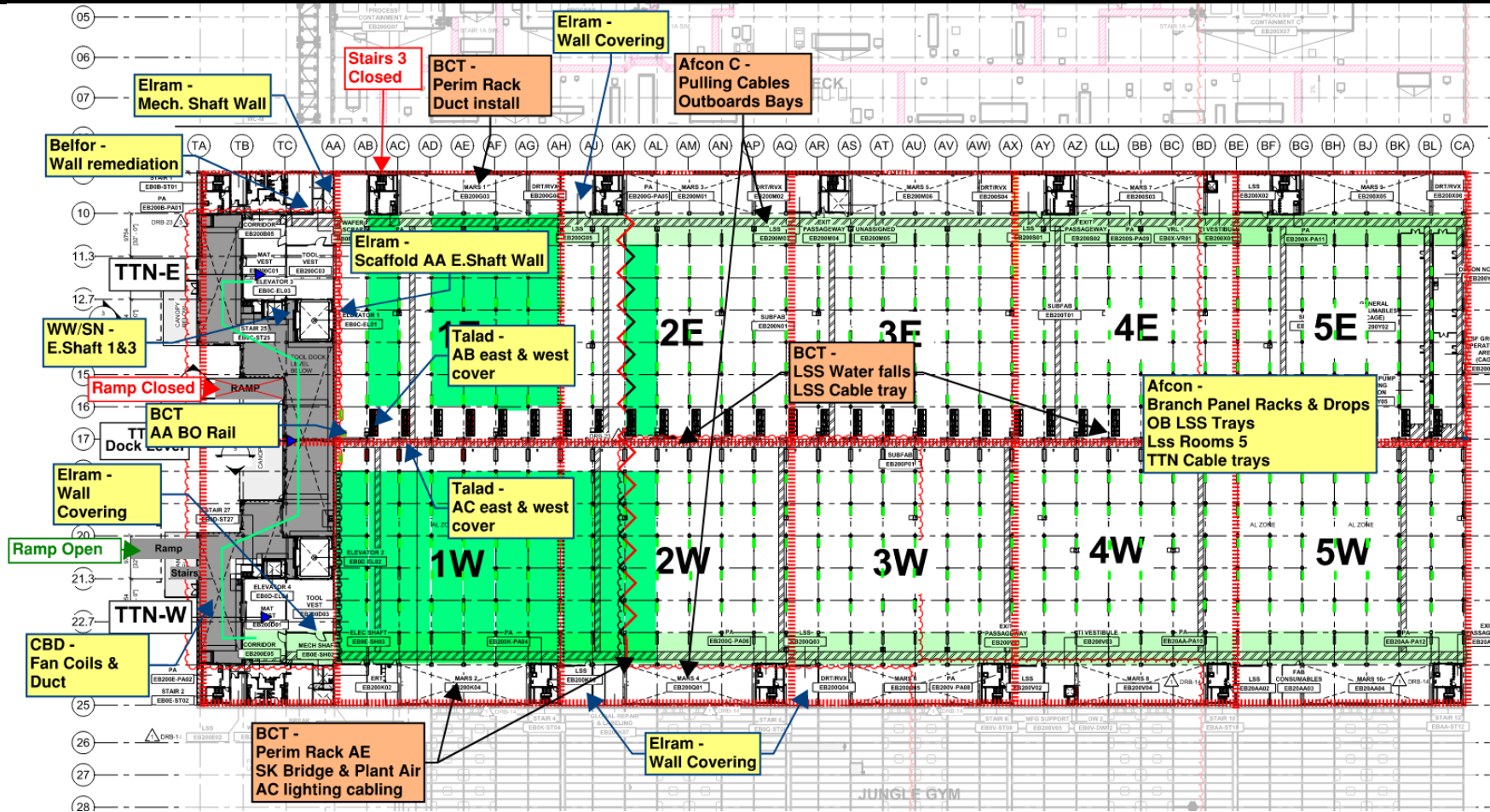
1A Rack
Lifting

8 Rack

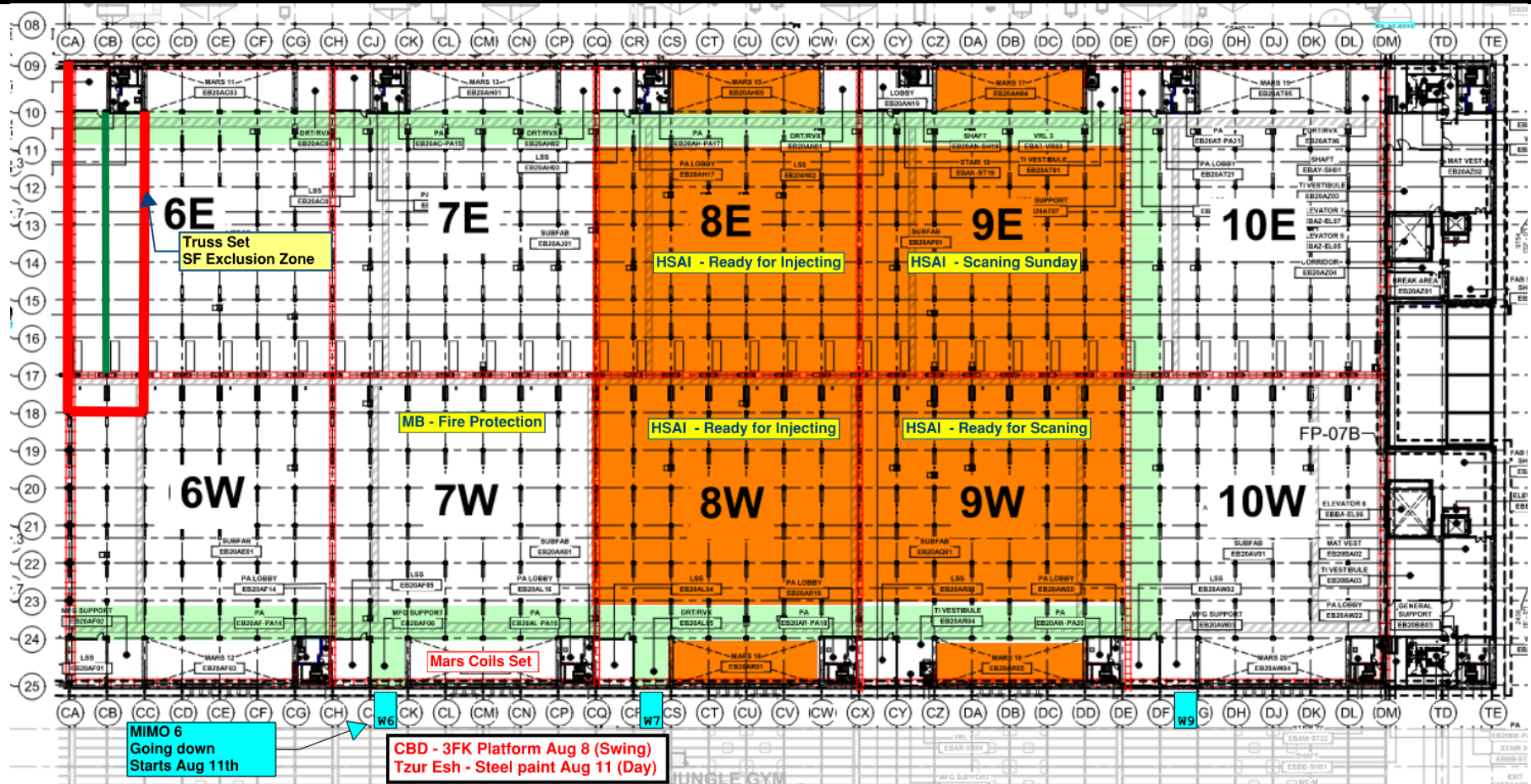
SKE
H&T
CRW
Move-In date ?

Vesda
H&T

SUBFAB BUILDOUT MOD 1



SUBFAB BUILDOUT MOD 2



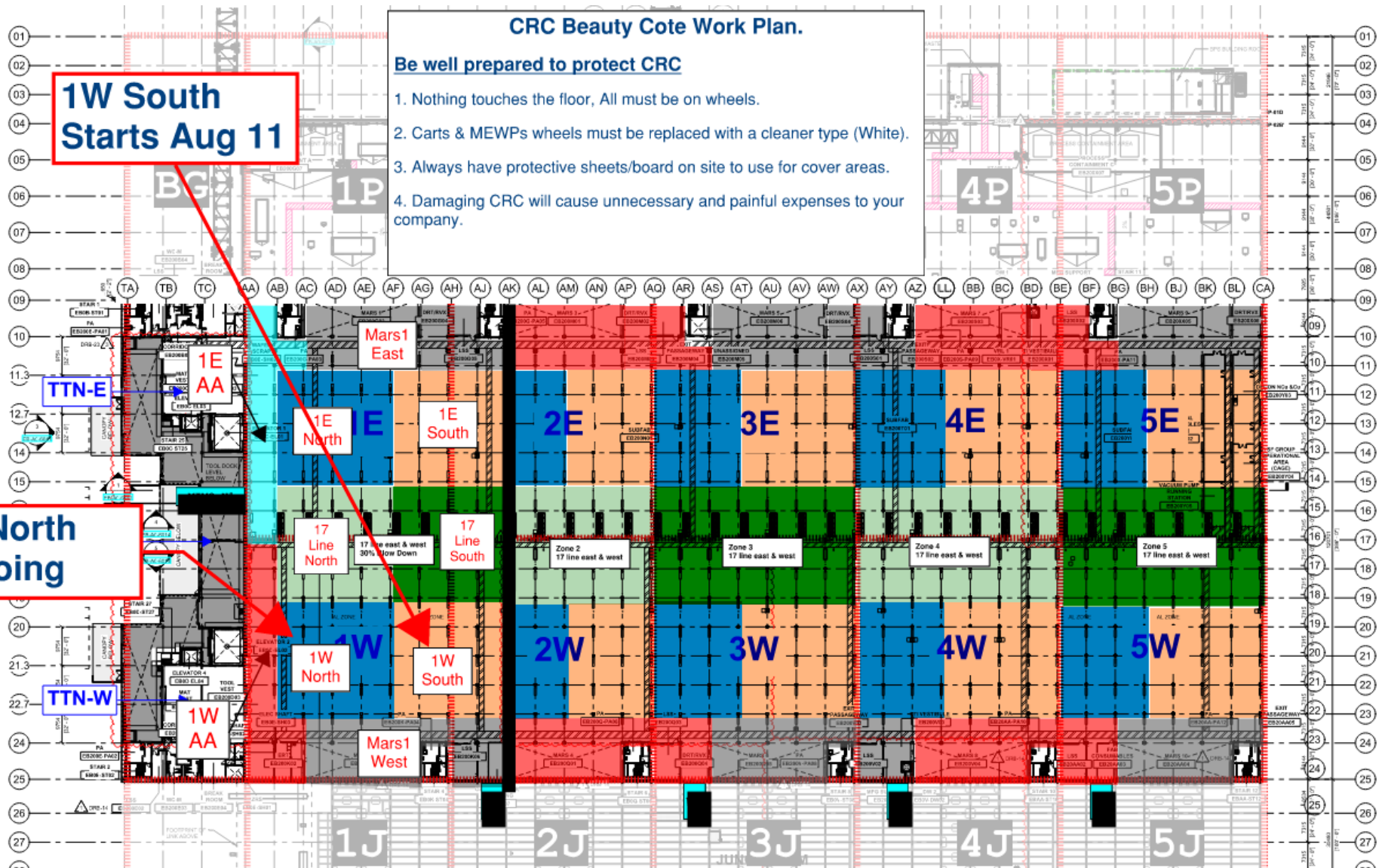
CRC Beauty Cote Work Plan.

Be well prepared to protect CRC

1. Nothing touches the floor, All must be on wheels.
2. Carts & MEWPs wheels must be replaced with a cleaner type (White).
3. Always have protective sheets/board on site to use for cover areas.
4. Damaging CRC will cause unnecessary and painful expenses to your company.

**1W South
Starts Aug 11**

**1W North
Ongoing**





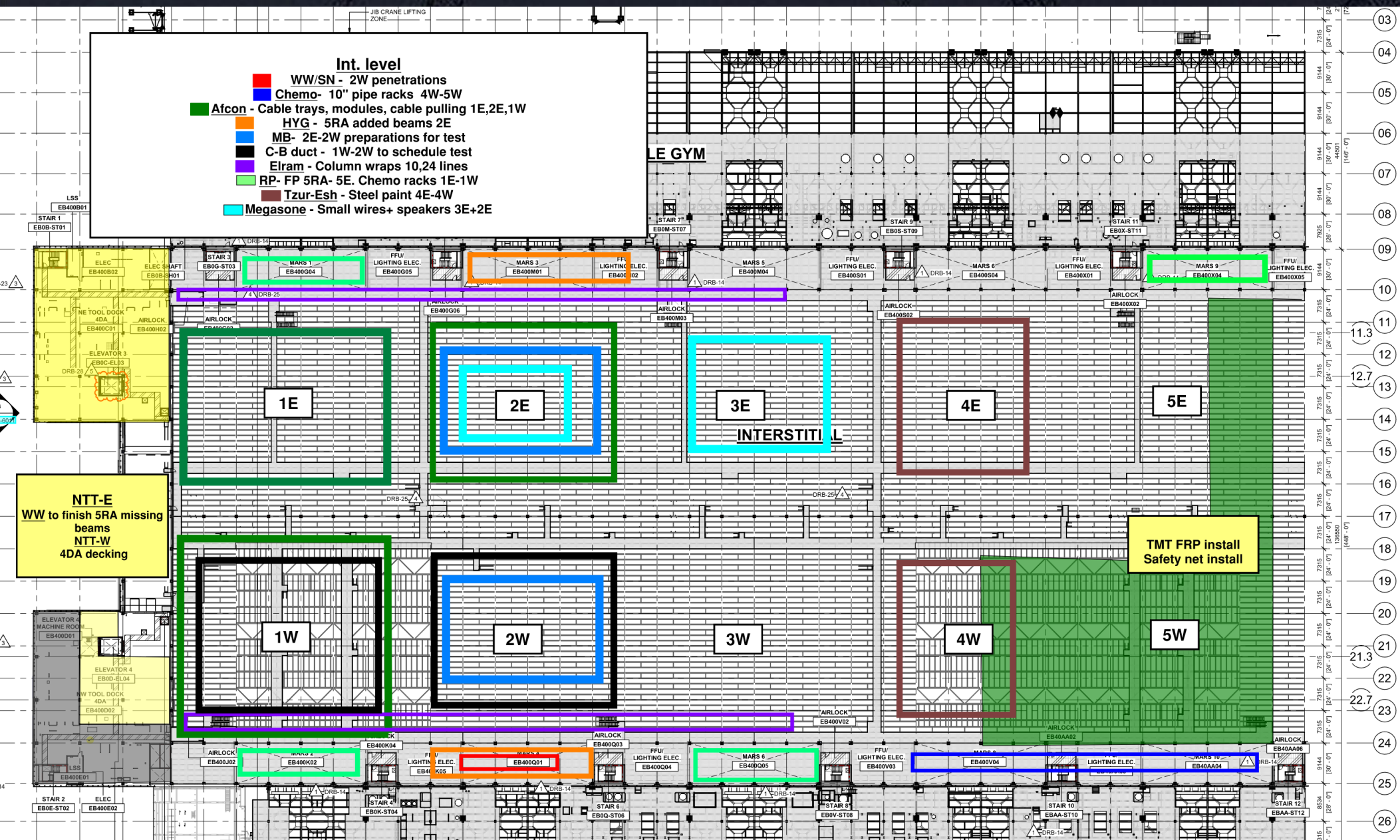
- CR level:**
- Atcon** - Cable trays, modules and stickers 1W, 2E, 2W
 - MB** - 1E drops, 1W drops, 2E drops
 - Elram** - 10, 24 columns/shaft walls
 - Meptagon** - Zero tolerance pipes 5E-5W, I&C preparations
 - D&P** - Ceiling rods 1E, 5E blades install.
 - Tzur-esh** - 24-25 lines, 4E-4W
 - HYG** - 1W Litho crane QA, 5W Litho crane steel
 - PT** - Duct prep for test AA-AH east
 - Talad** - Blades install 24-25 lines

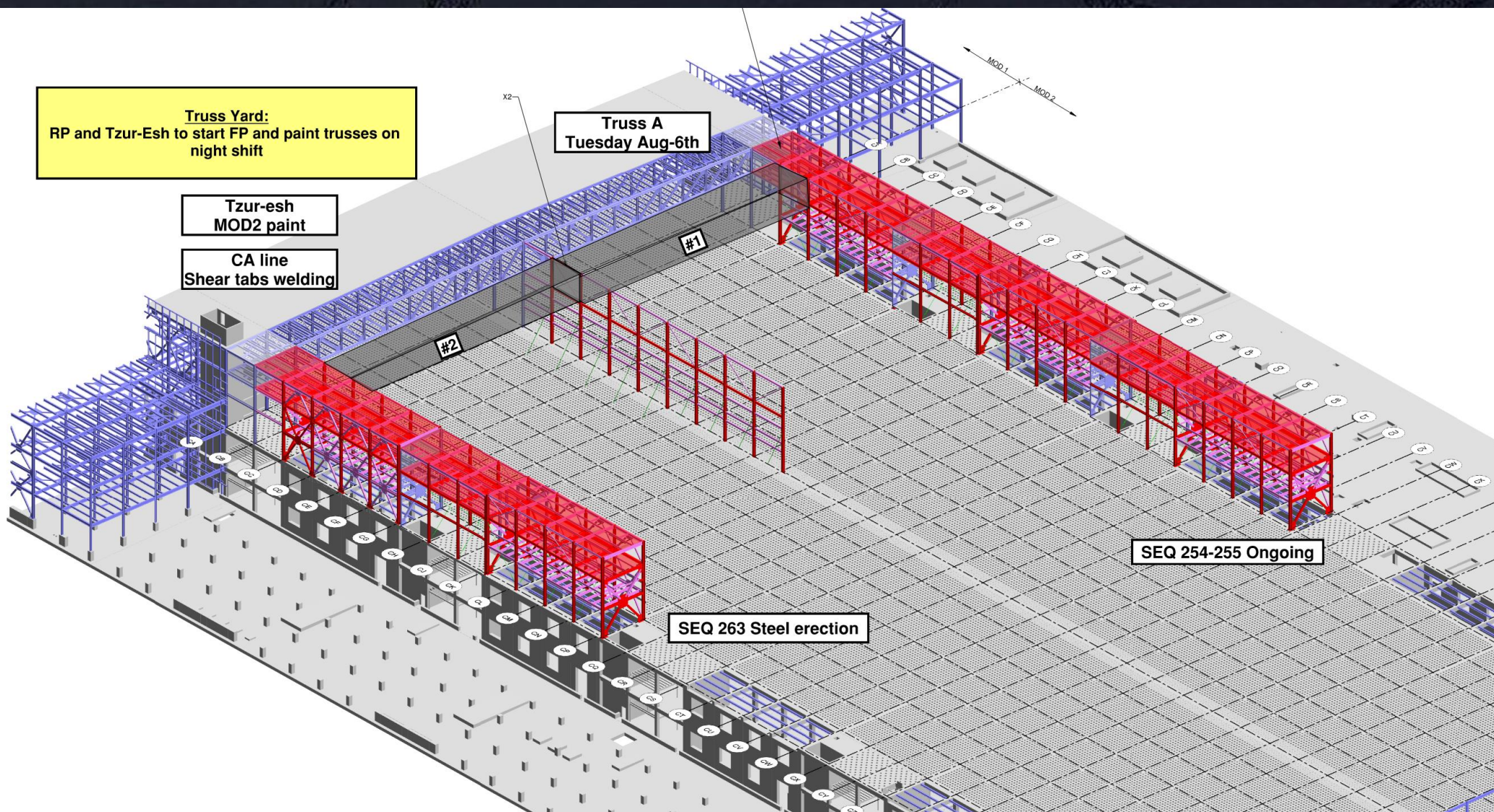
Belfor
1E 9 Line+ AA line

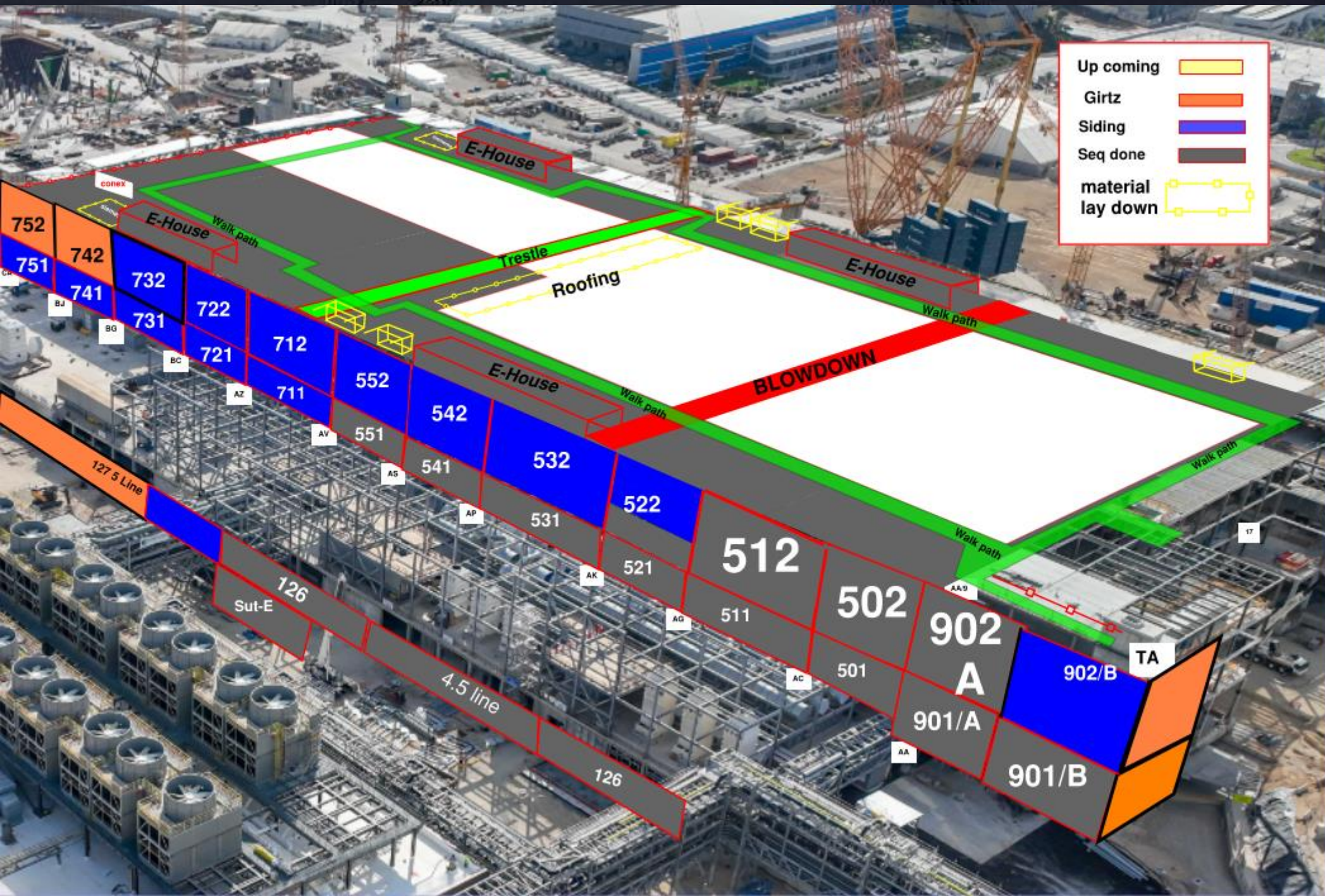
NTTE/W
WW/SN - west side welding tabs and replacing beams
Elram - East/West floor done QA/QC
SK - east side pipes needs to be completed
HYG - East to finish steel.
West receiving material

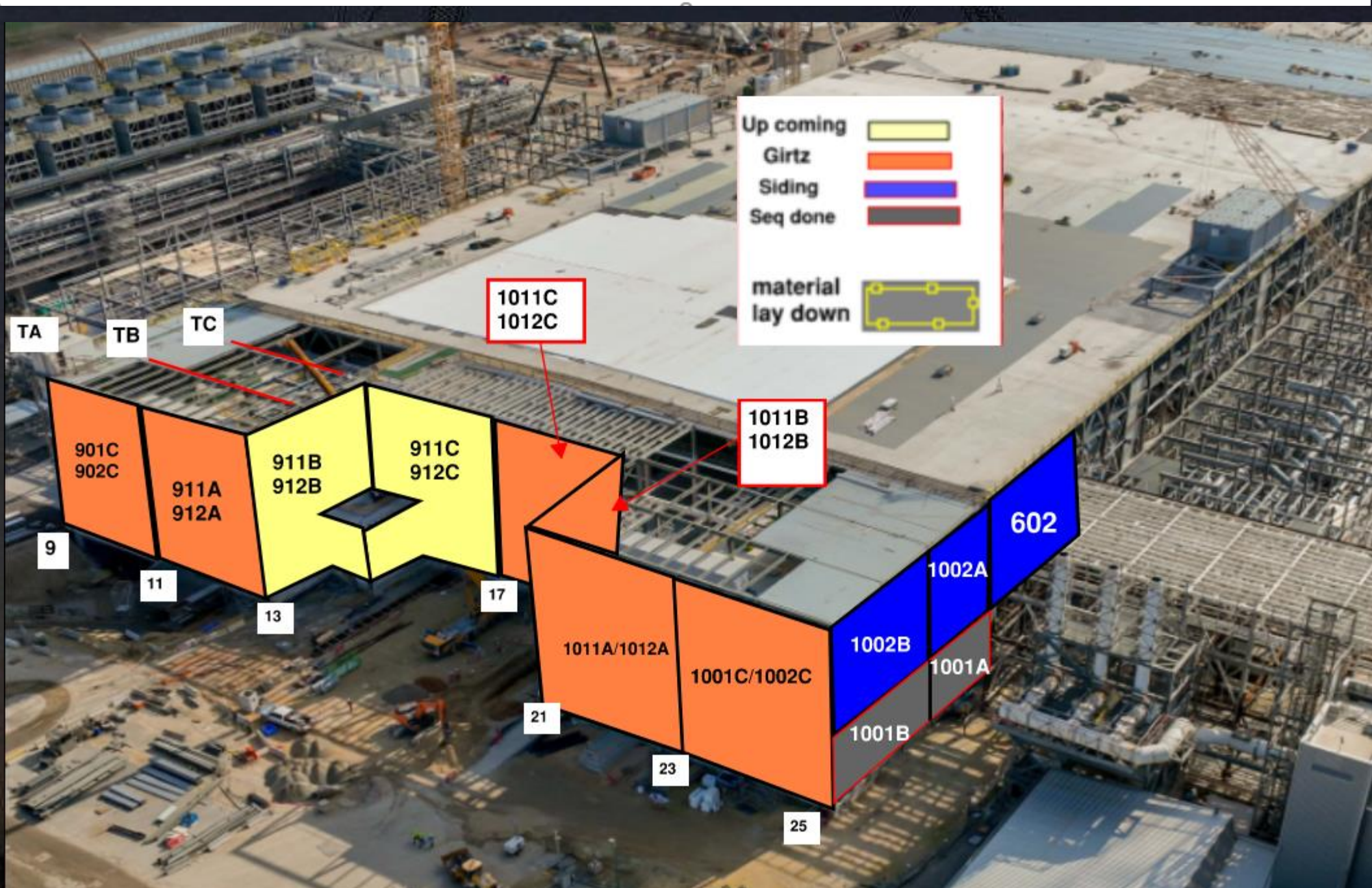
Link
RP - FP 5RA level
MB - To start WW33

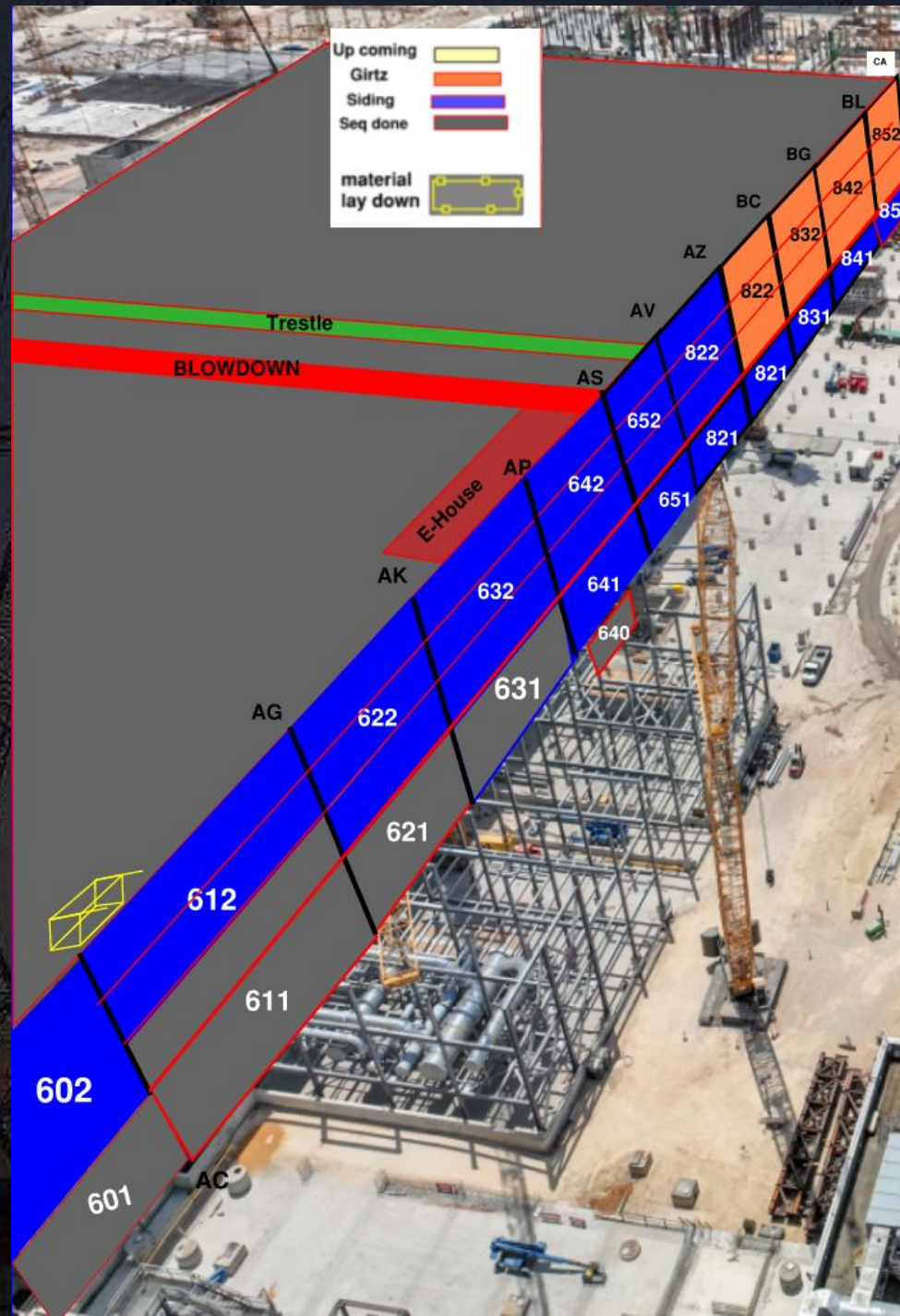








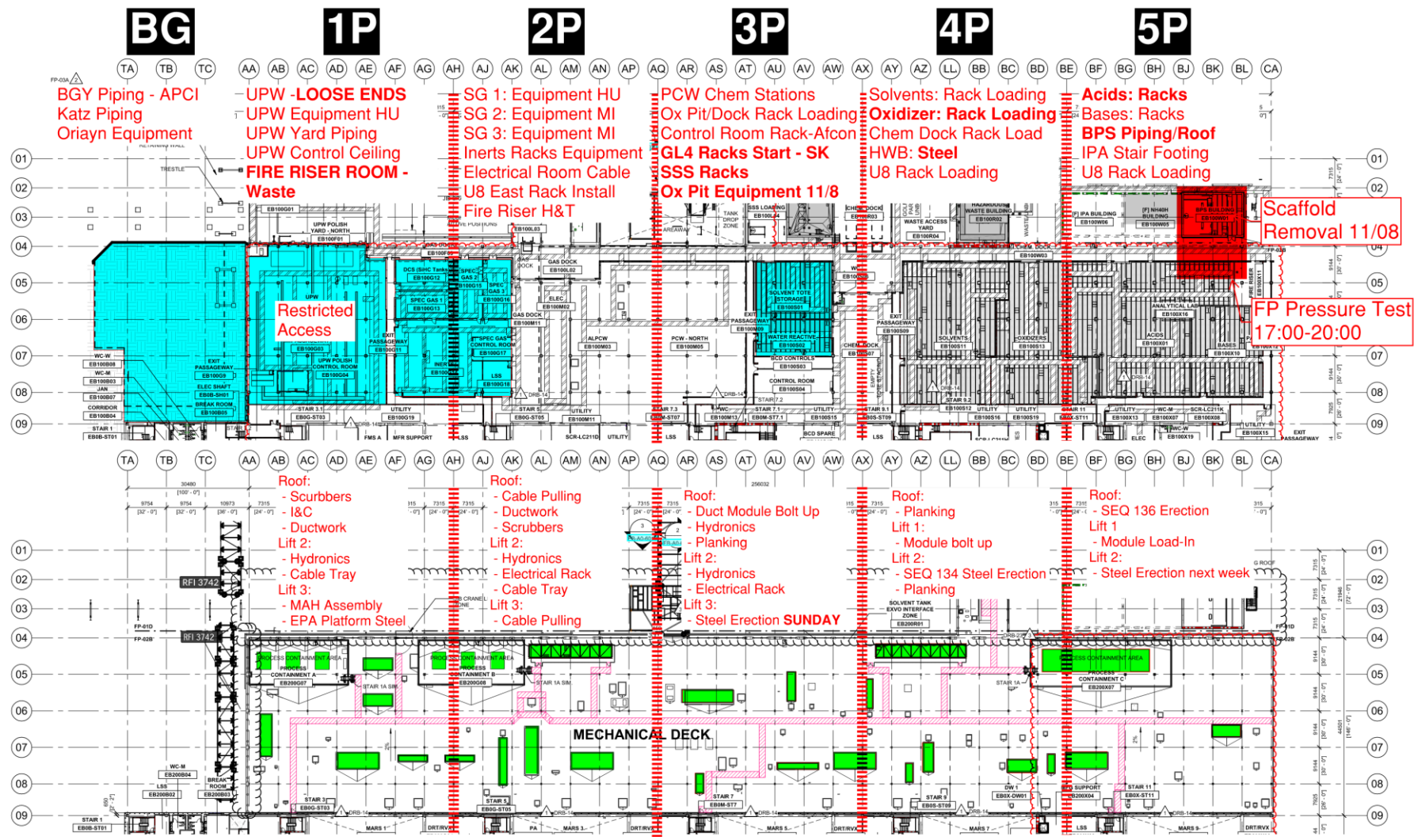




PSSS.1

Utility Level
1YA

PSSS Roof
2SA

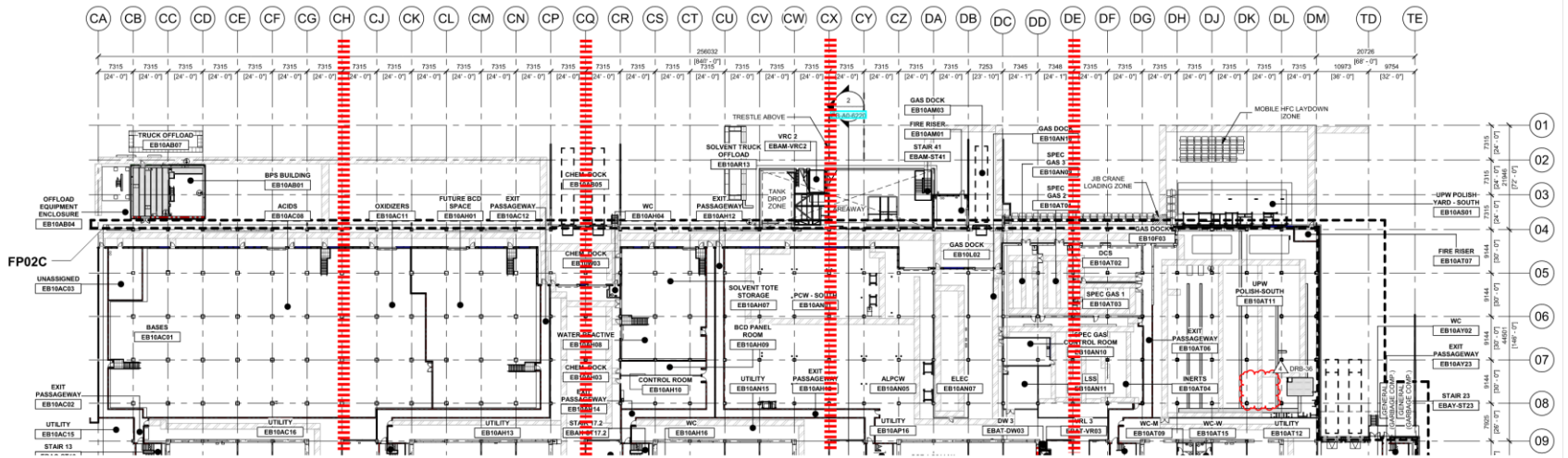


PSSS.2

10P

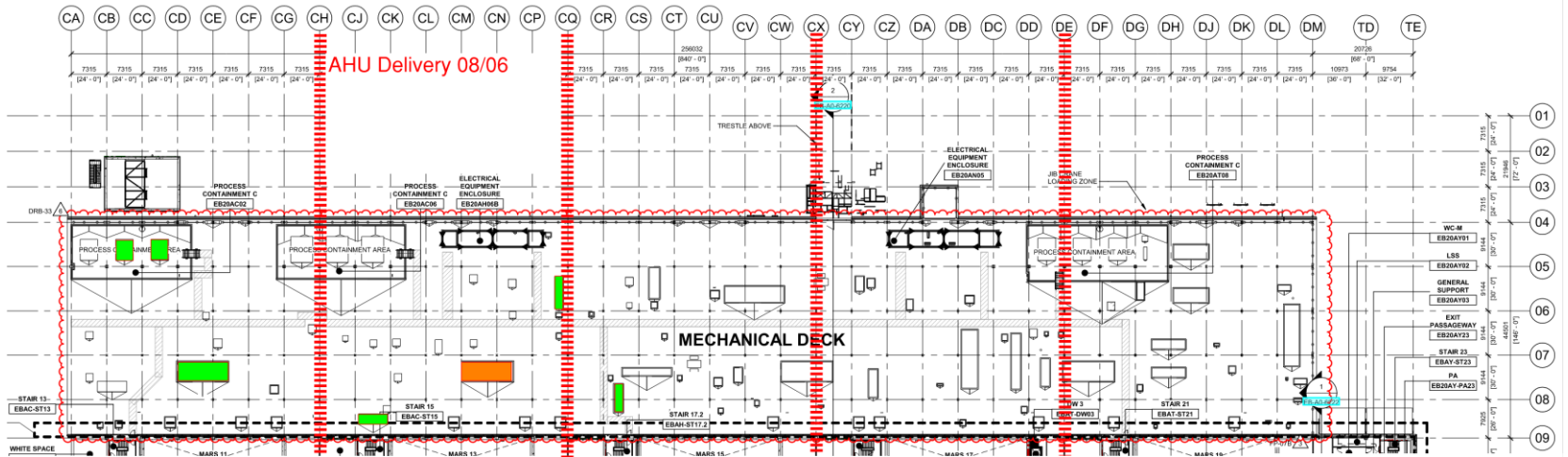
Utility Level

1YA



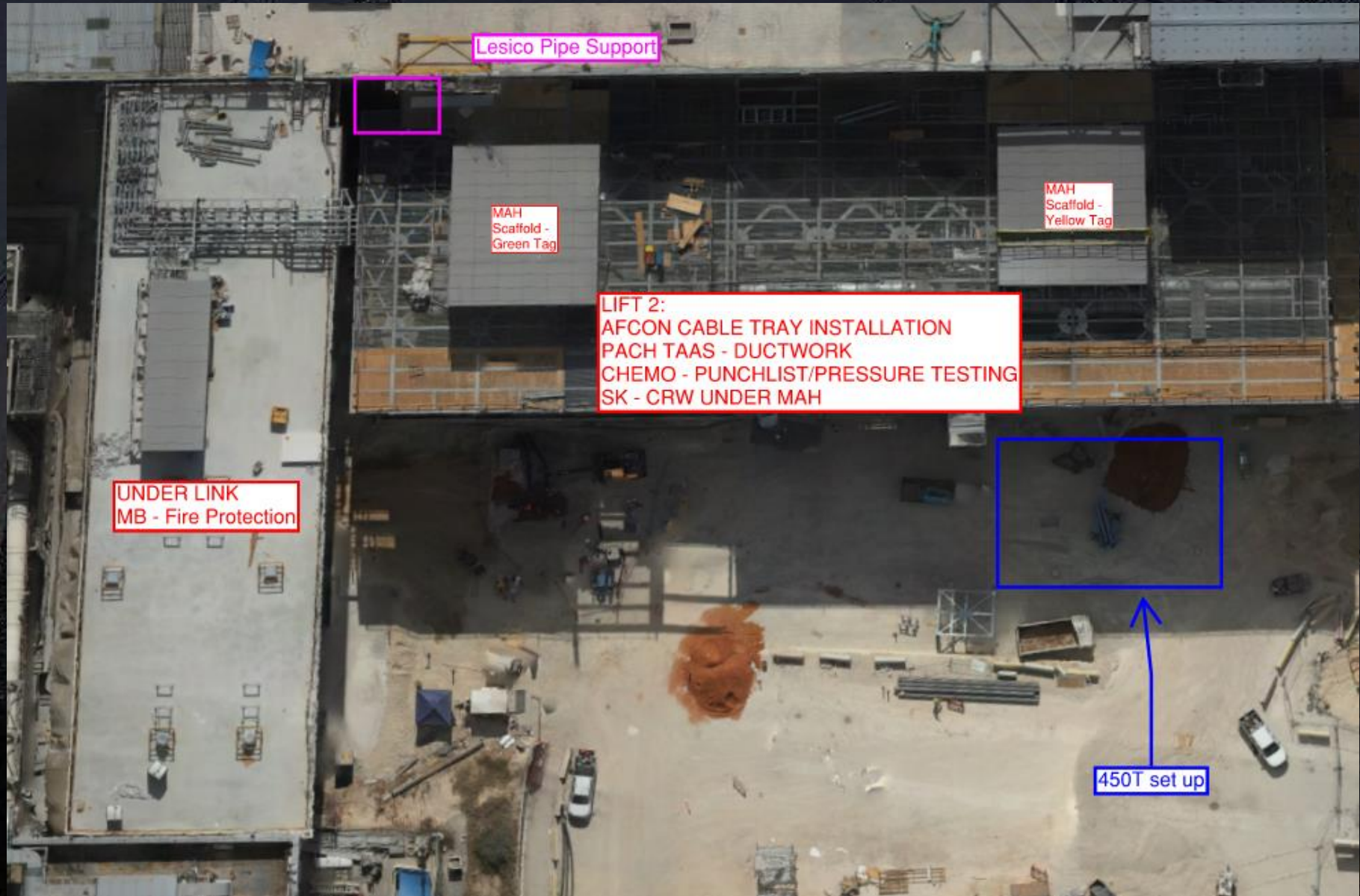
PSSS Roof 2SA

AHU Delivery 08/06



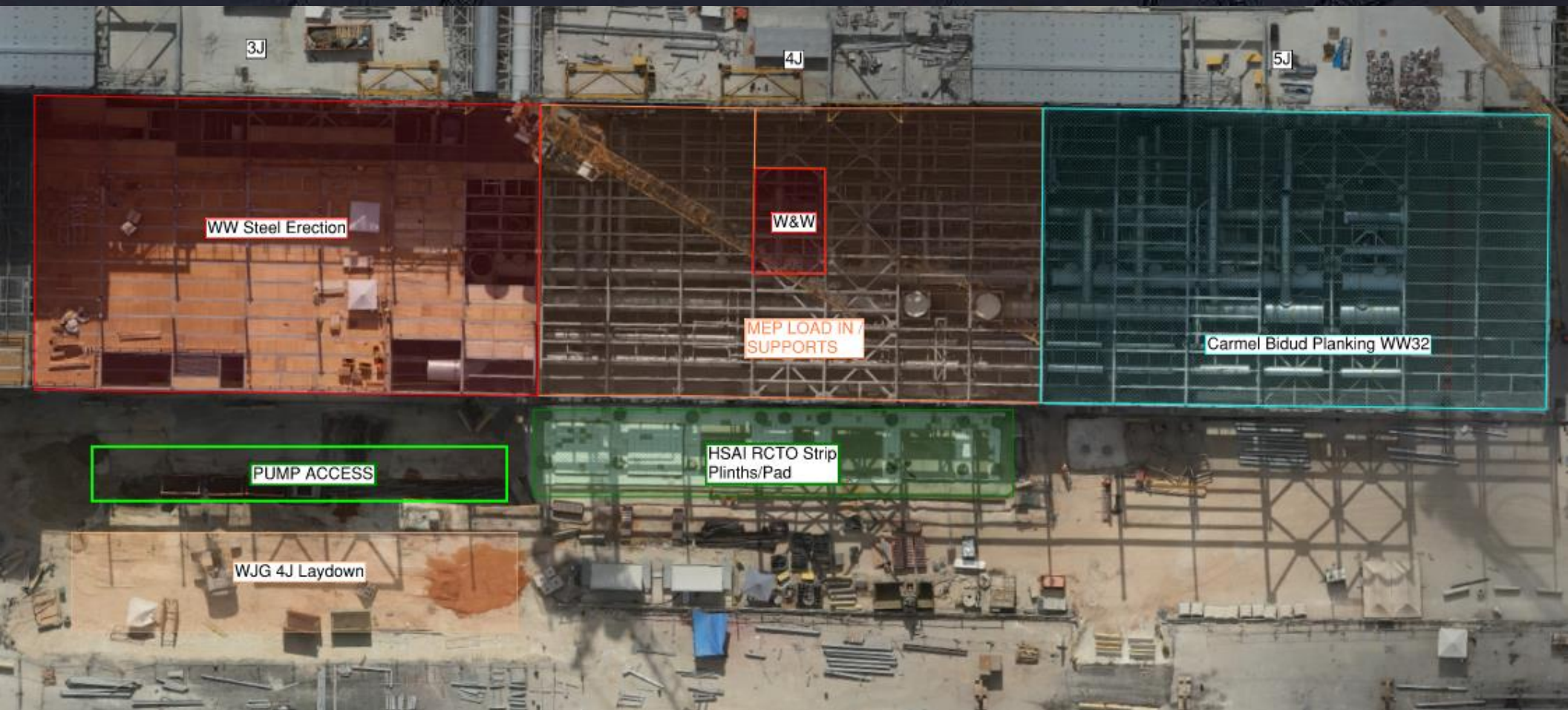


WJG 01J, 02J LIFT 2 & 3

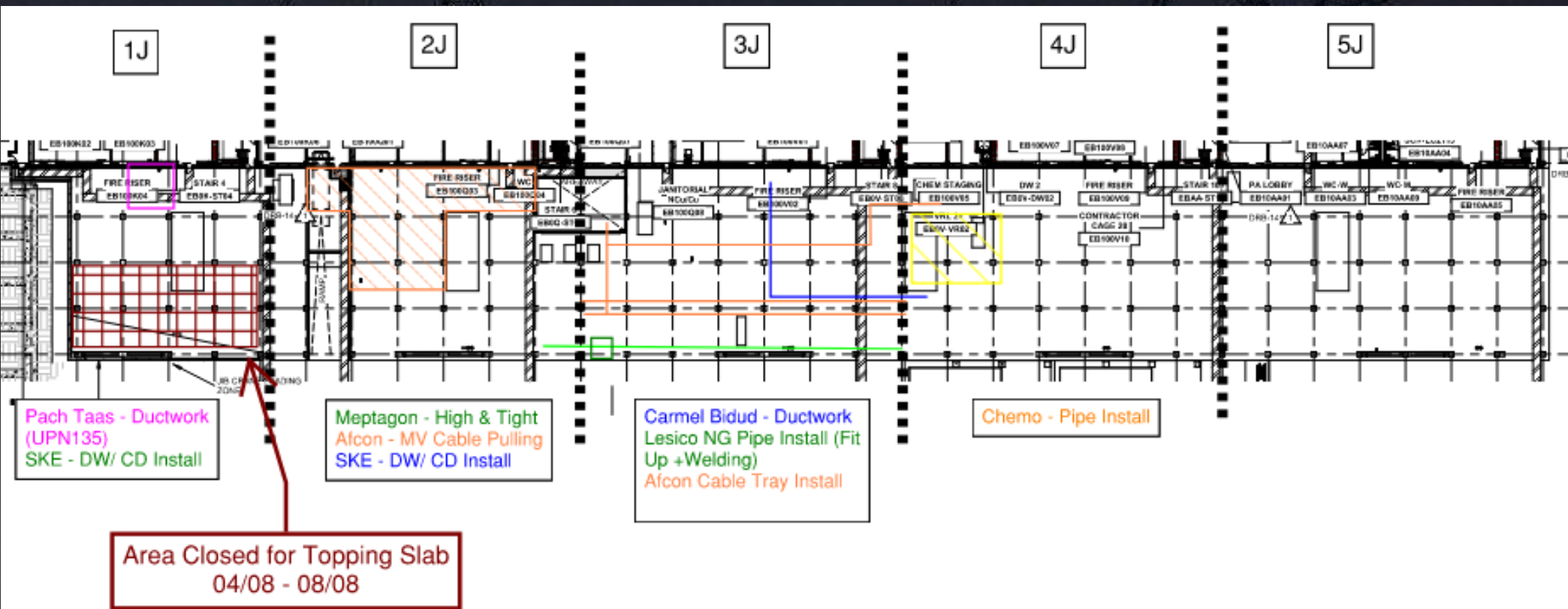


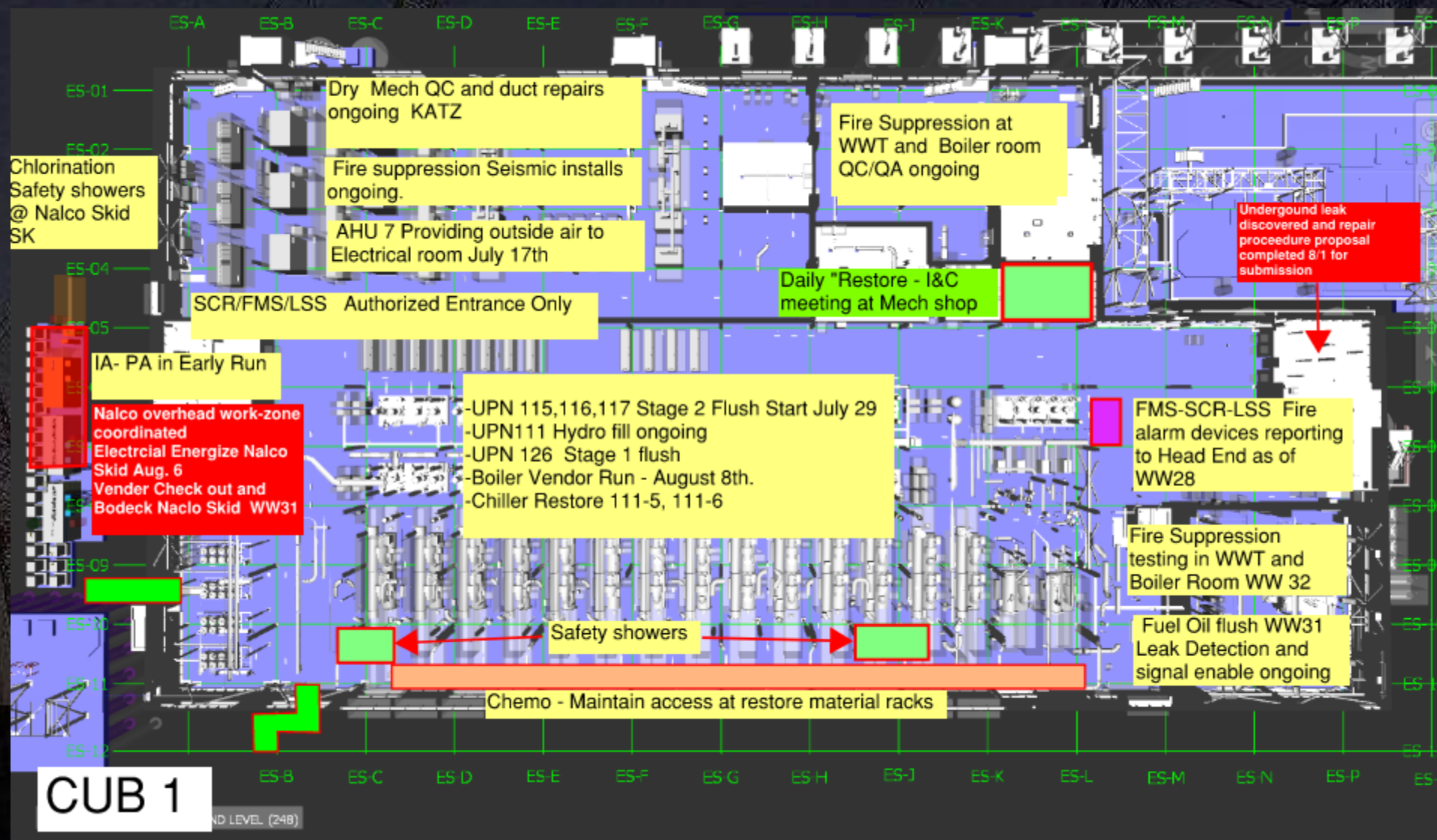


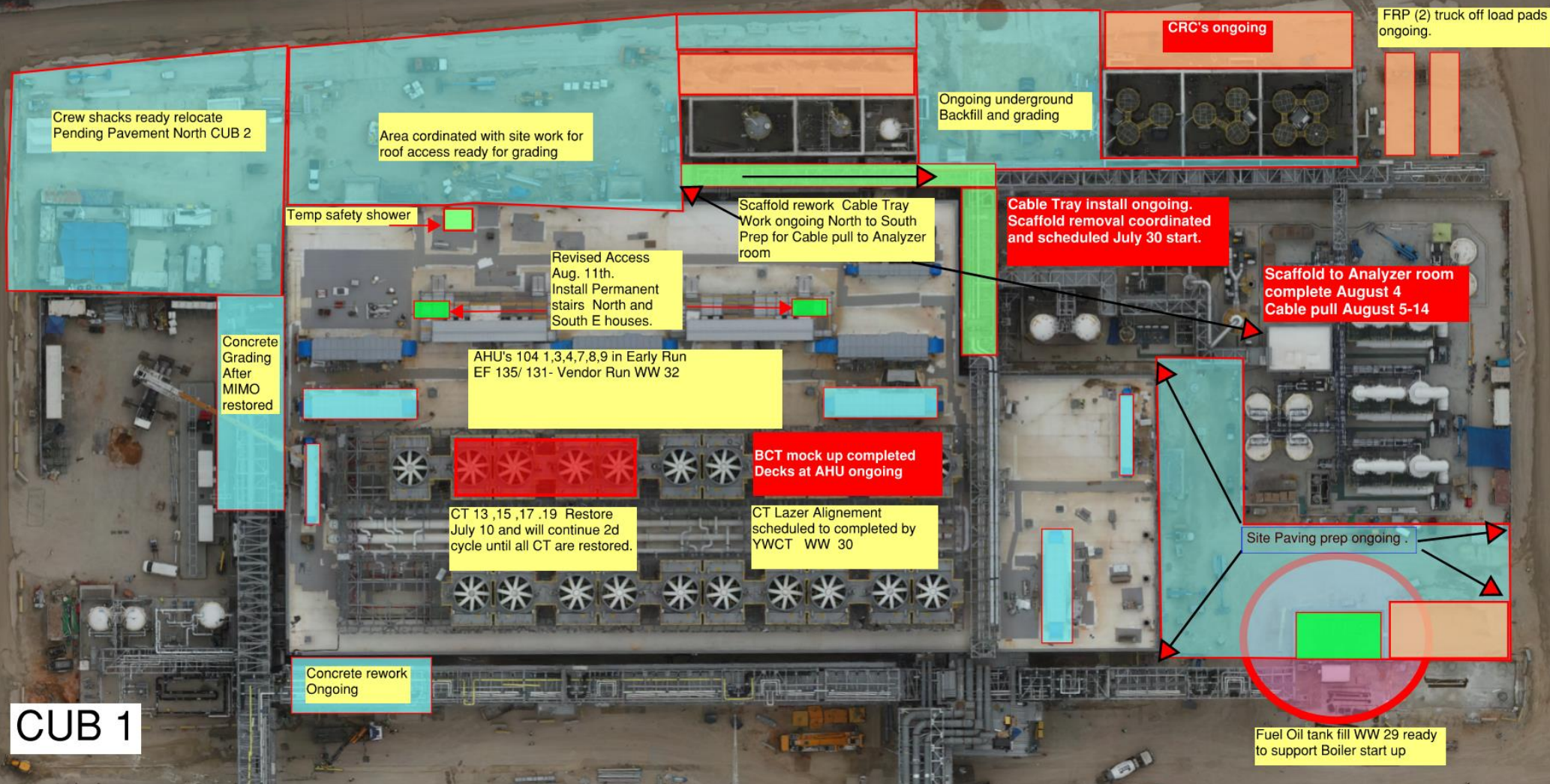
WJG 03J, 04J, 05J LIFT 2 & 3

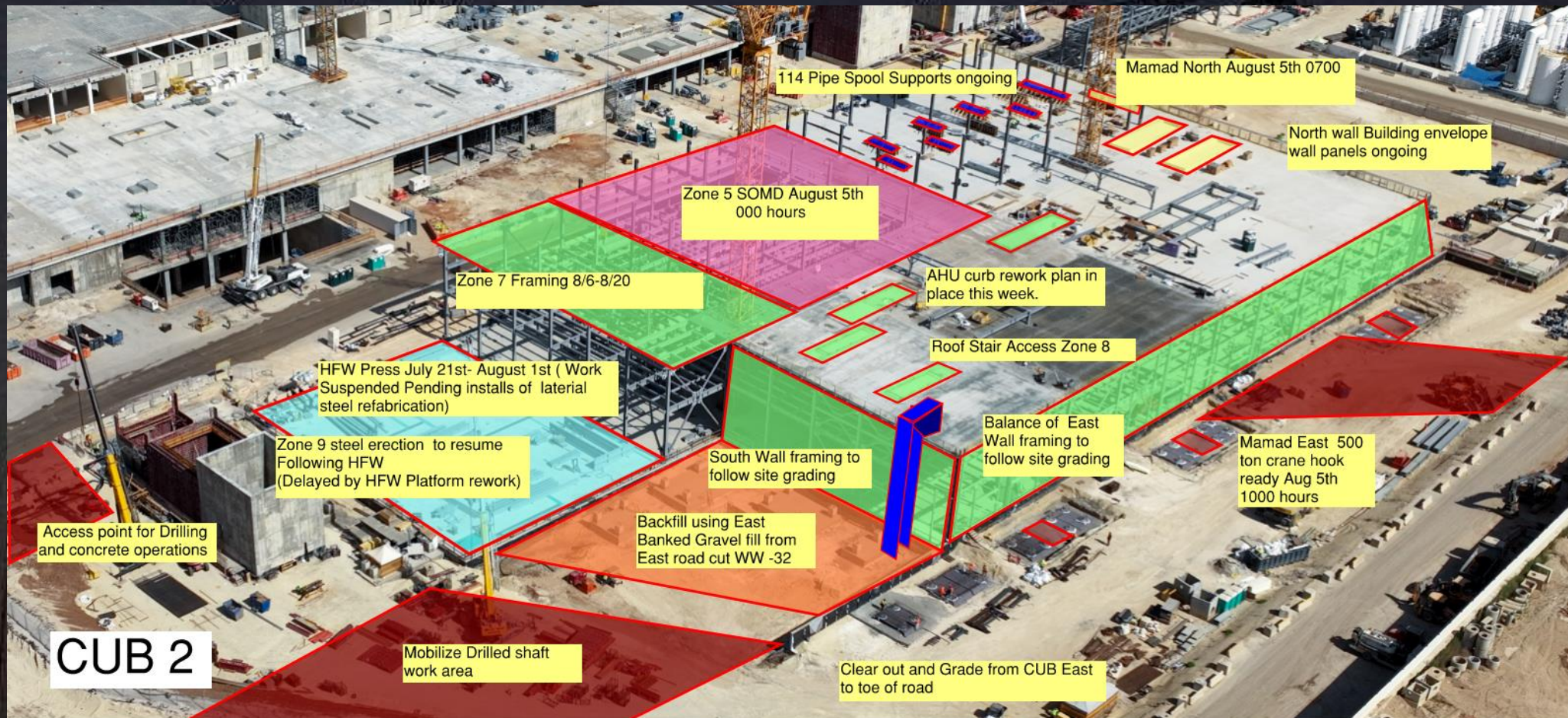


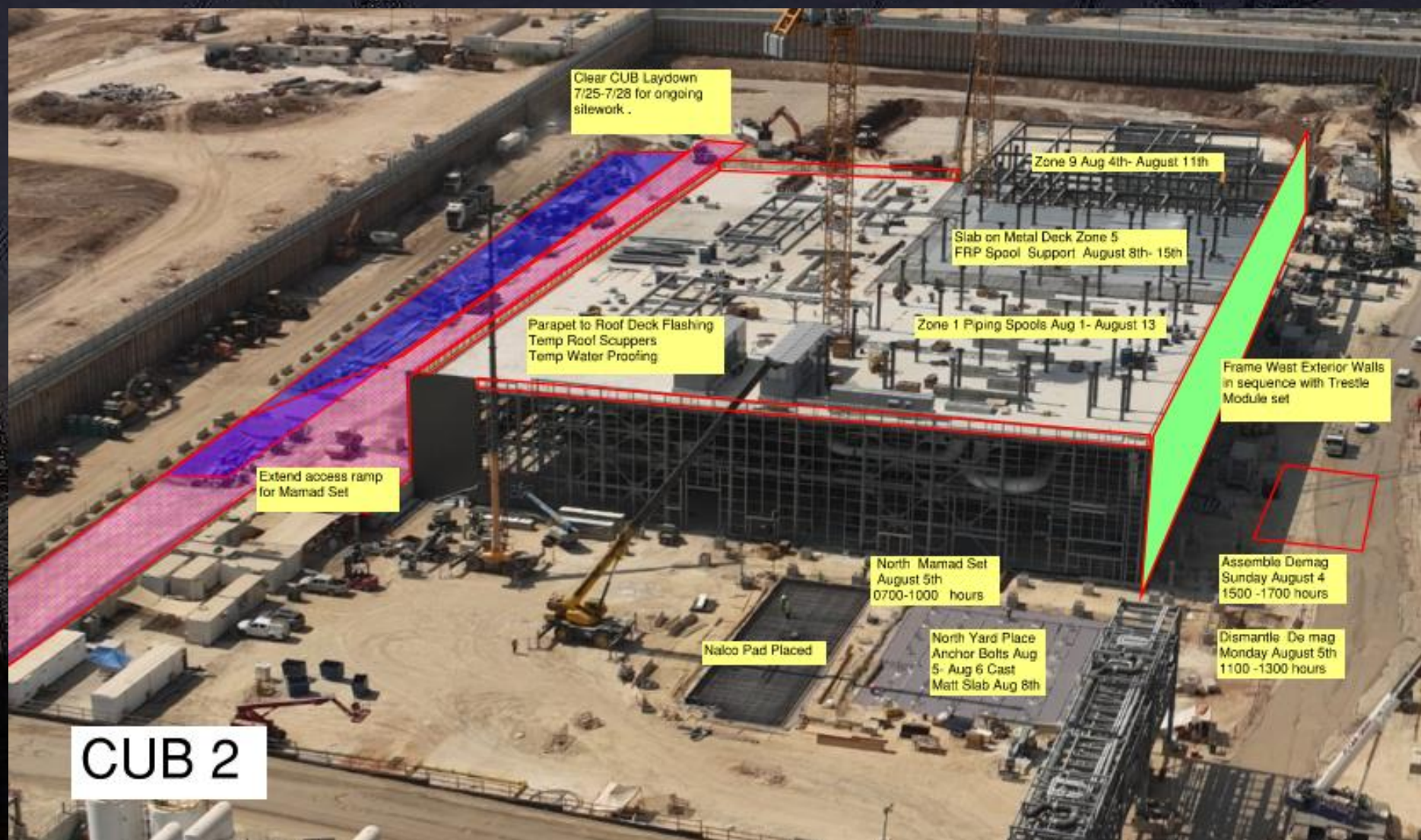
WJG UTILITY LEVEL BUILD OUT

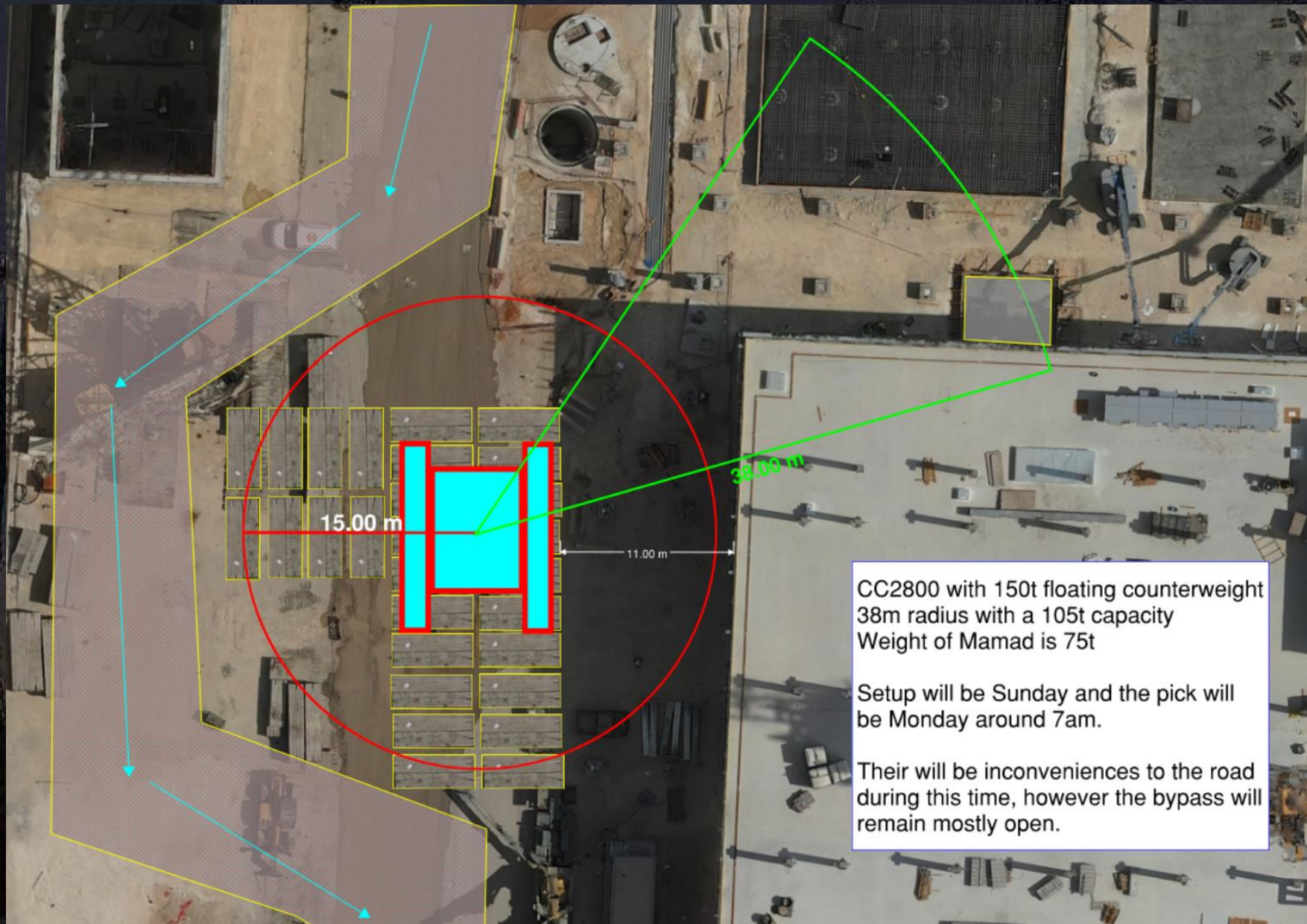








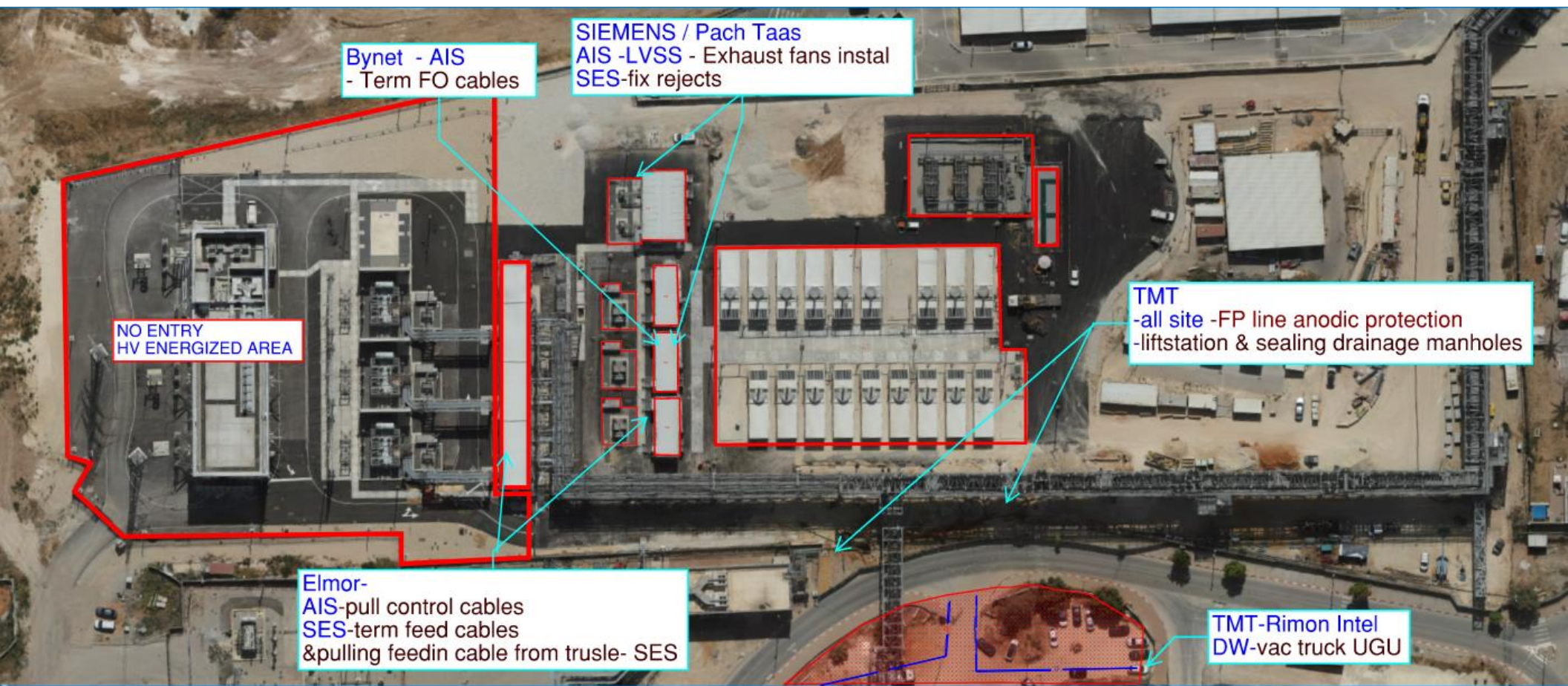




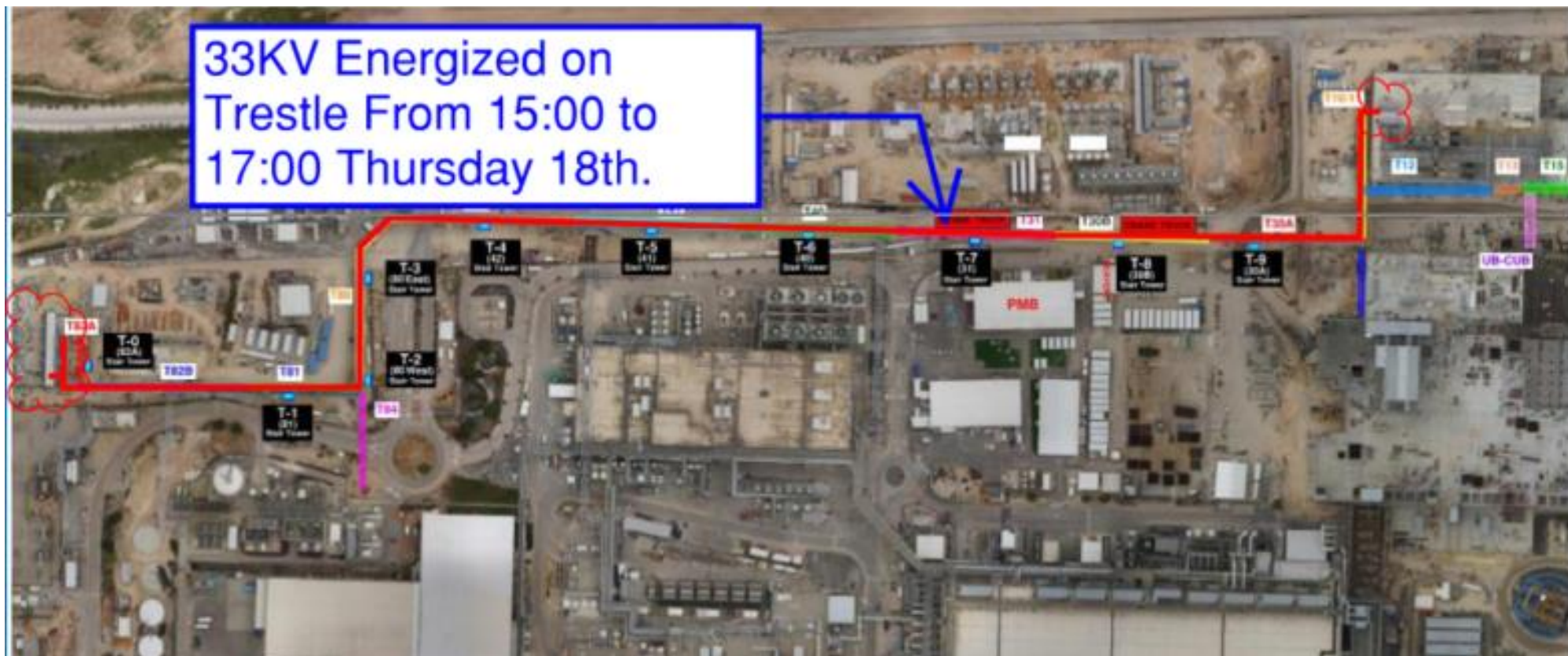
CC2800 with 150t floating counterweight
38m radius with a 105t capacity
Weight of Mamad is 75t

Setup will be Sunday and the pick will
be Monday around 7am.

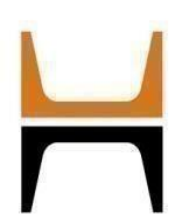
There will be inconveniences to the road
during this time, however the bypass will
remain mostly open.



33KV Energized on
Trestle From 15:00 to
17:00 Thursday 18th.







HOFFMAN CONSTRUCTION COMPANY

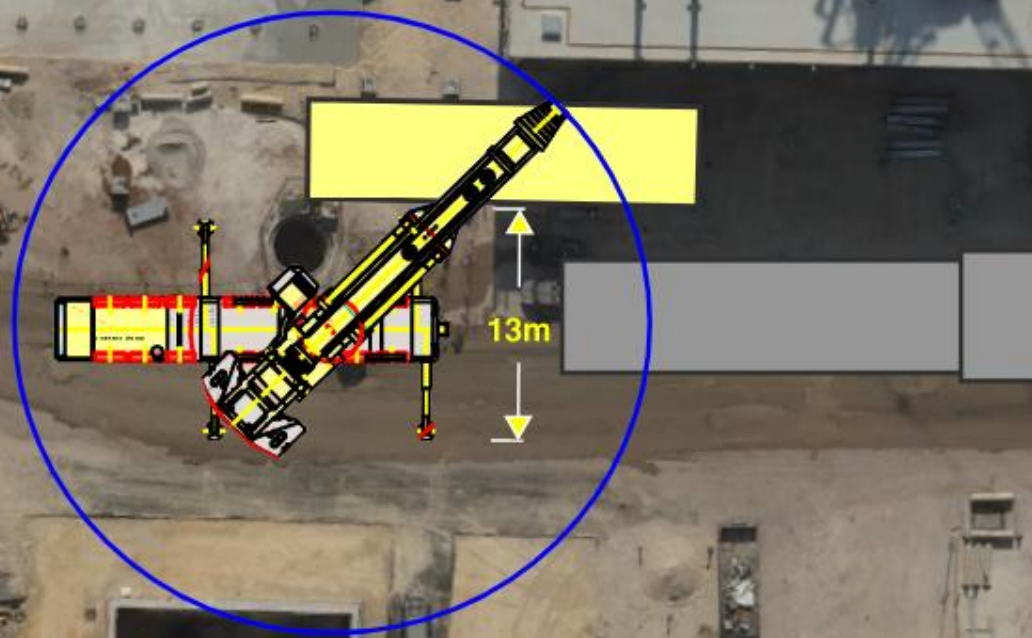


HOFFMAN
Sparrow  

T-17

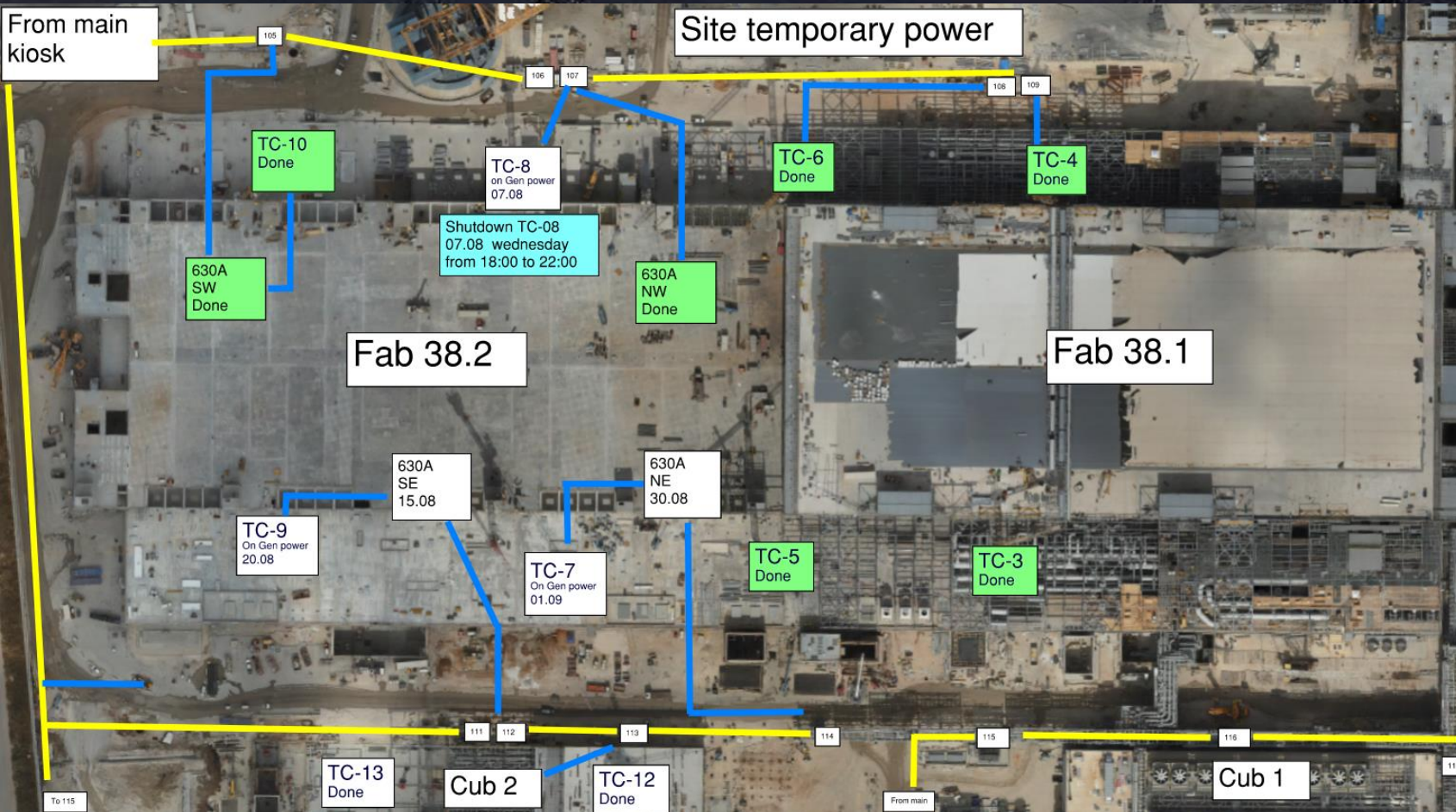
Trestle - MOD 2 Steel erection

6-7 August



BSGS



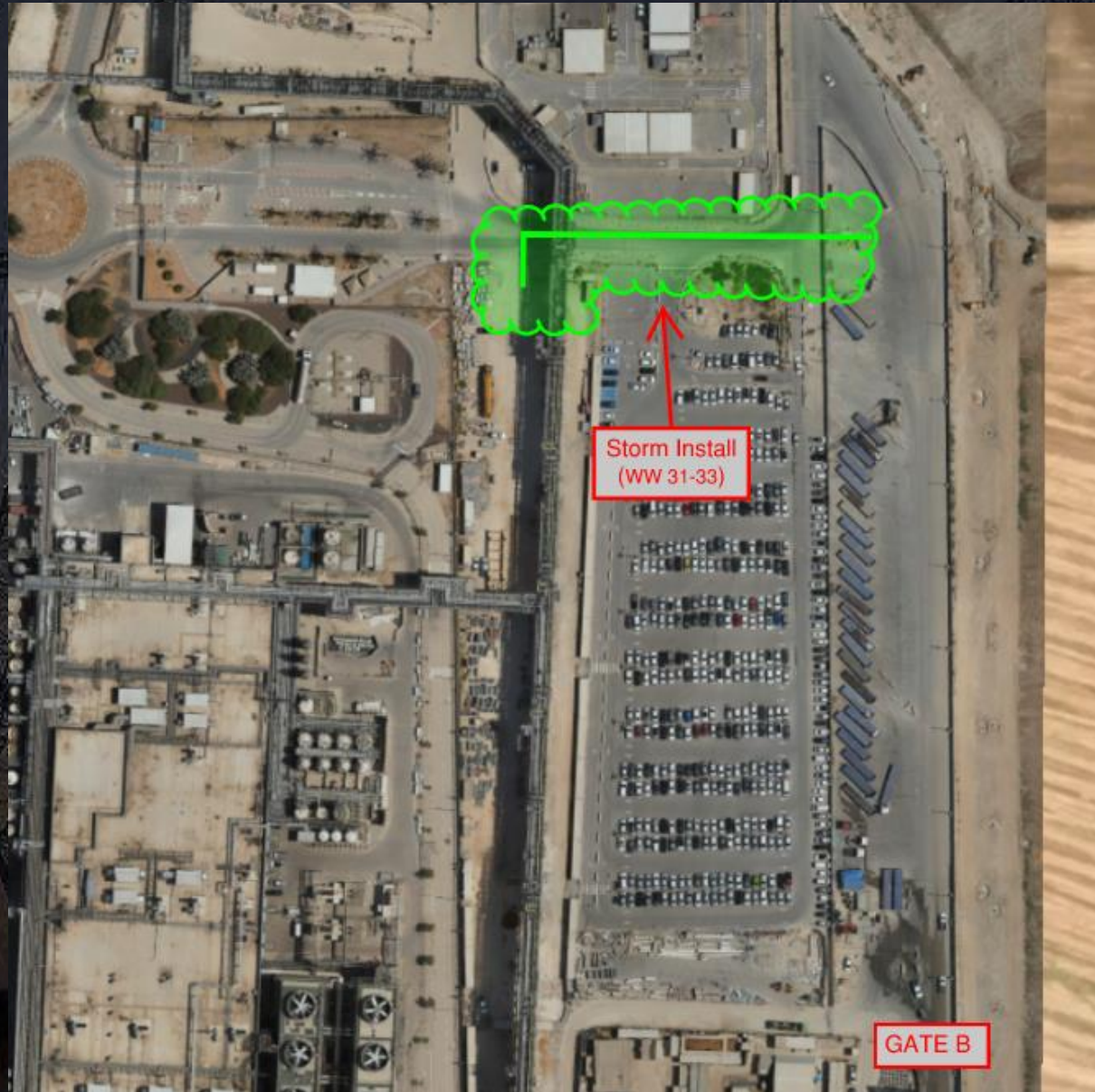


Legend :

- 22KV Line
- 400V Line
- 109 - Kiosk

Daily Coordination Meeting

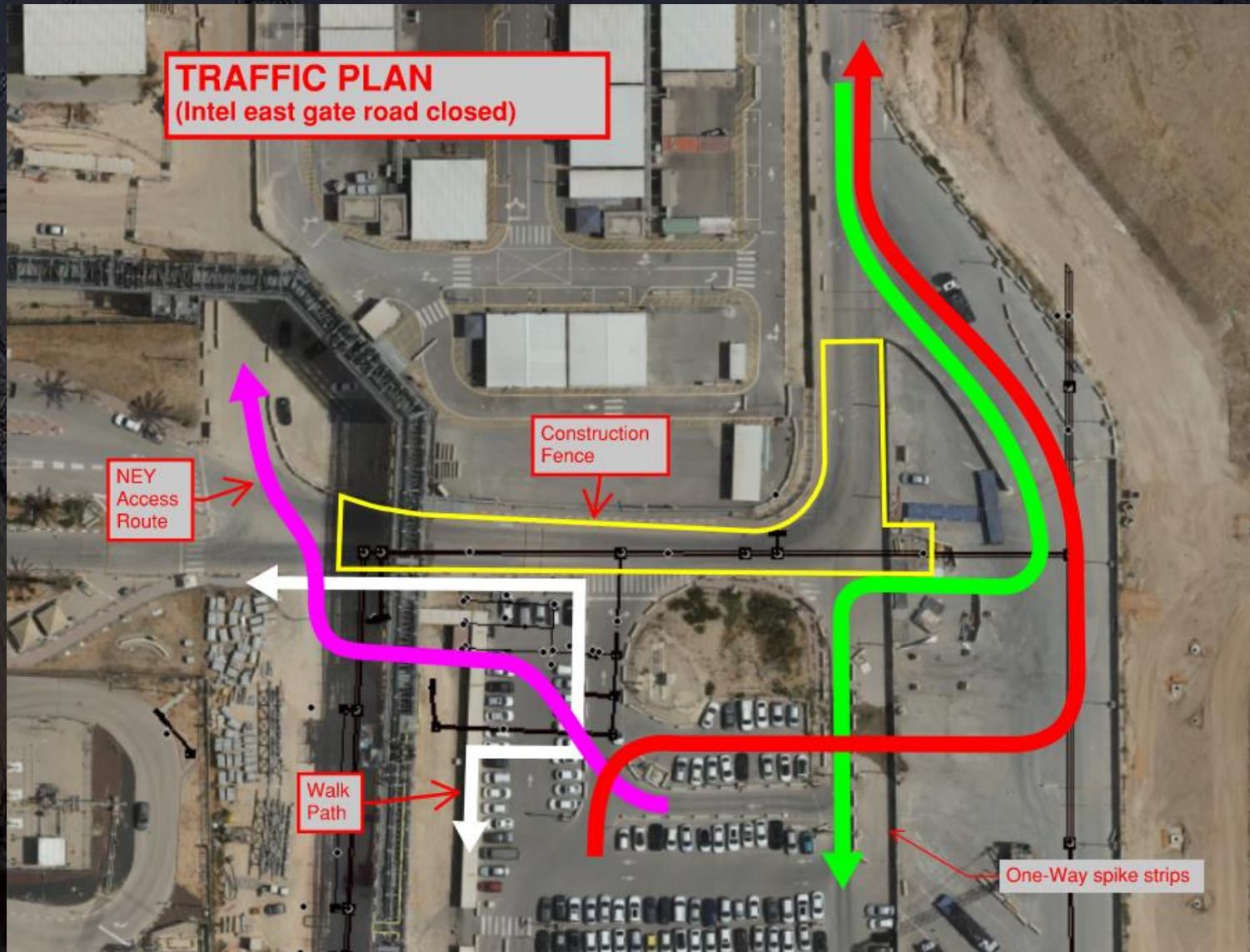
Site Logistics
North Gate B



Daily Coordination Meeting

Site Logistics

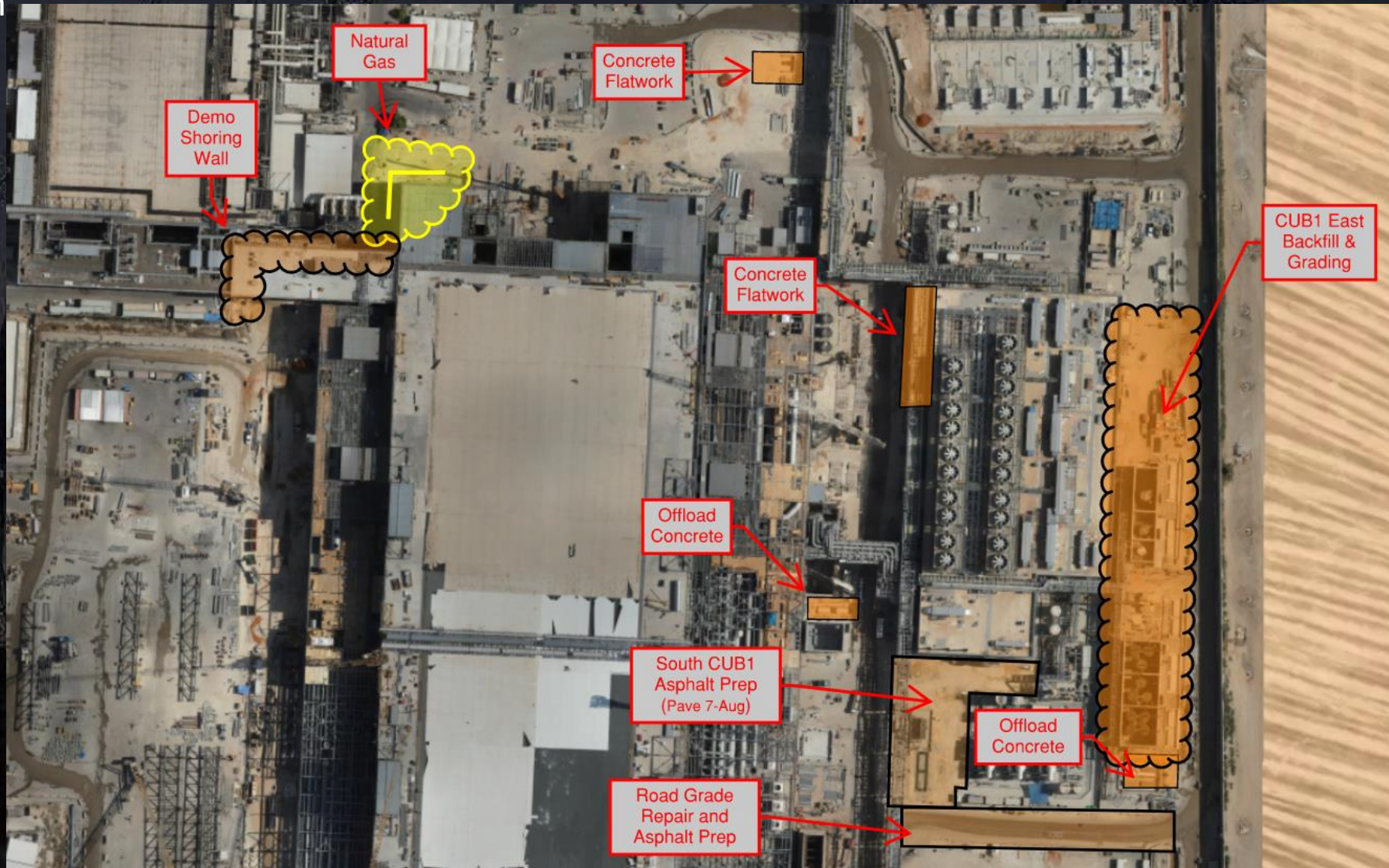
Traffic Plan



Daily Coordination Meeting

Site Logistics

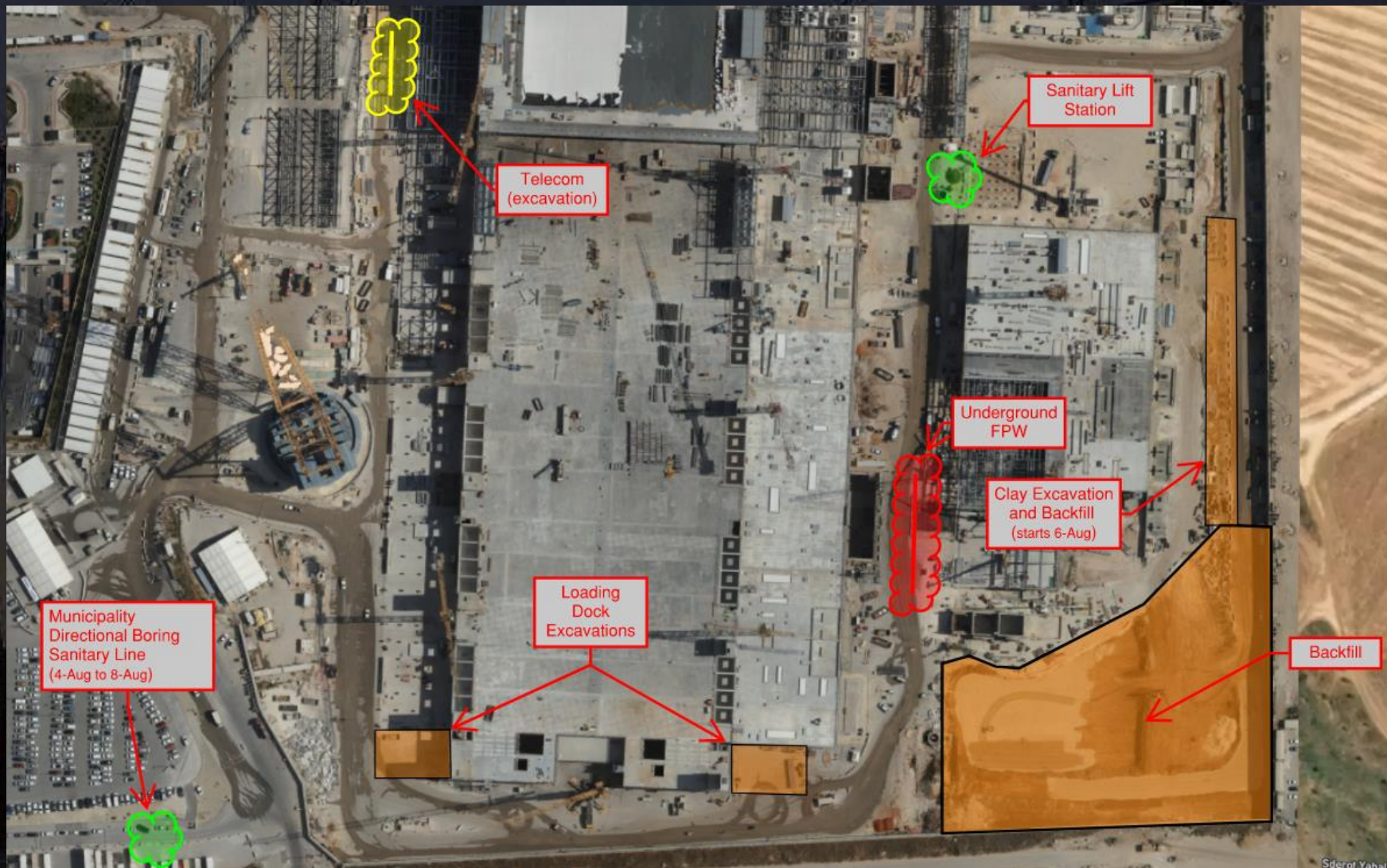
North



Daily Coordination Meeting

Site Logistics

South

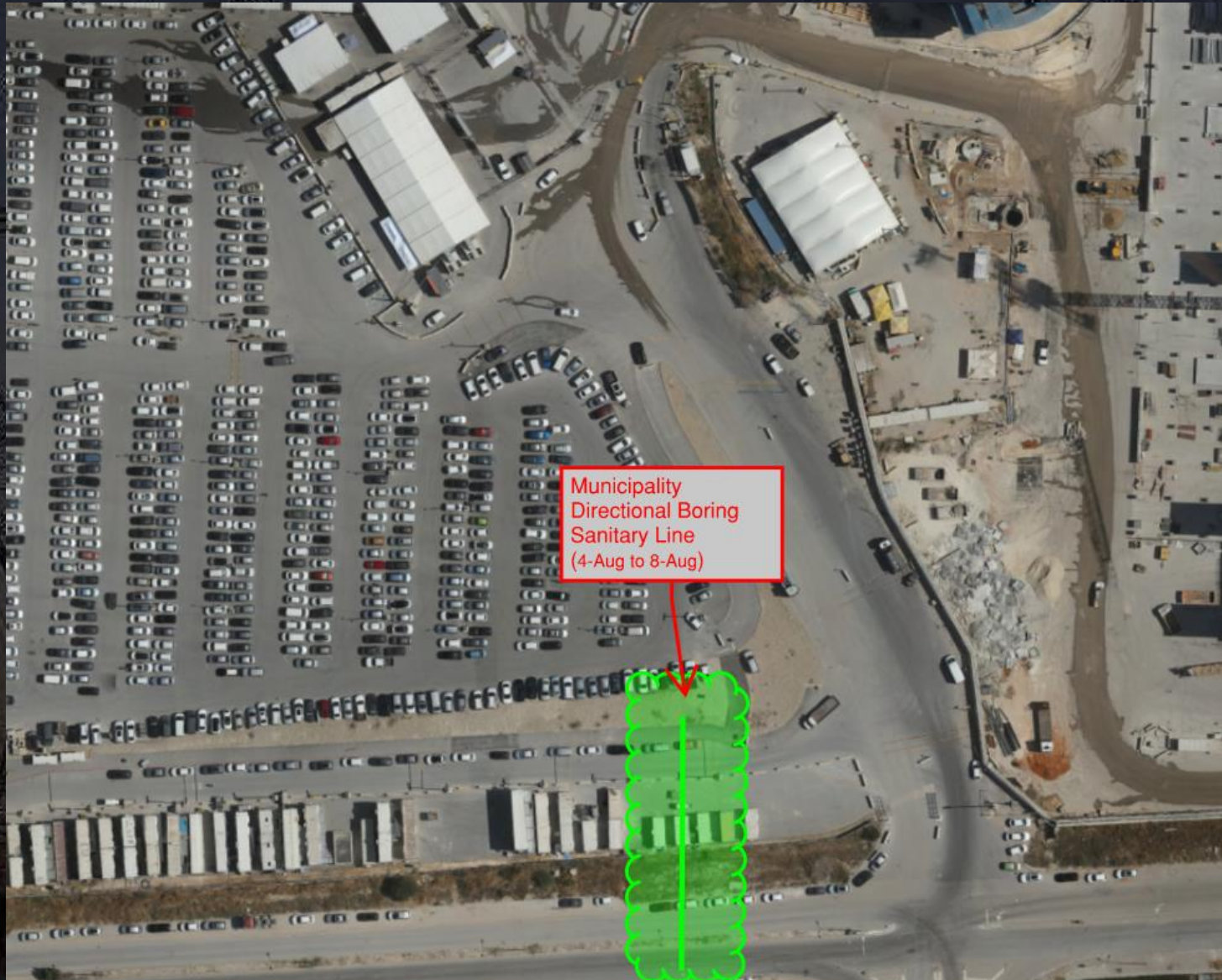


Daily Coordination Meeting

Site Logistics

SW Parking

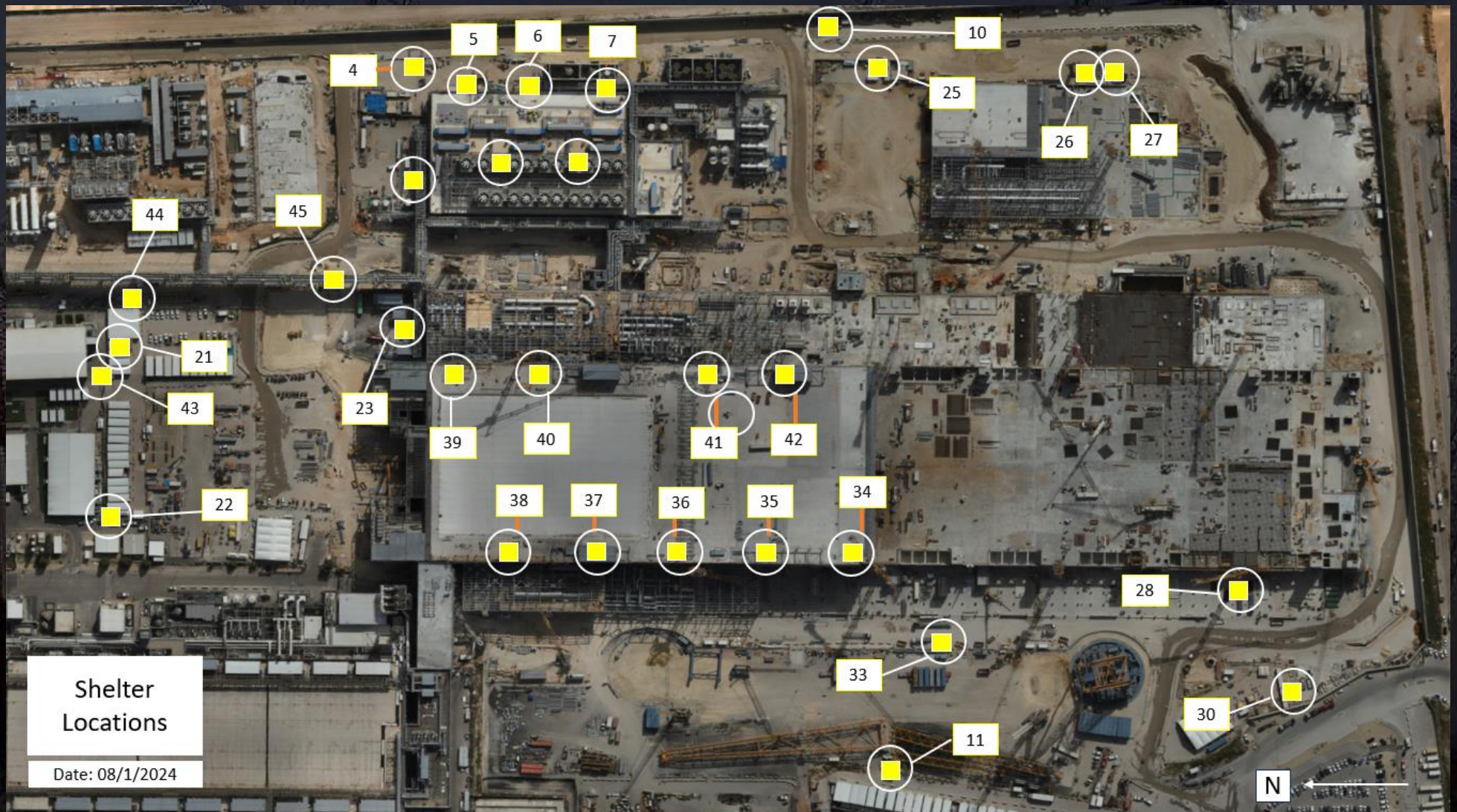
Sanitary



Daily Coordination Meeting

Site Logistics

Protected Areas



Daily Coordination Meeting

WATER BOTTLE FILLING & PERSONNEL COOLING STATIONS

BF (1) AT GIS








Stop the Drop

- We are continuing the trend of dropped object incidents on the project.
- More and more of these are unsecured tools or materials that are falling into unbarricaded areas.
- Part of the plan for every day **MUST** be an area assessment.
- This area assessment must identify if there is potential for something to fall, and if there is, a barricade must be in place.
- All tools and materials are required to be secured from falling.
- We are seeing many operations where this has not been considered at all in the planning phase.
- This group needs to hold team leaders accountable for ensuring that they have good plans, and that each crew has the appropriate tools to secure loose objects at heights.



Heat Index- August 6th

		temperature (°F)															
		80	82	84	86	88	90	92	94	96	98	100	102	104	106	108	110
Relative Humidity (%)	40	80	81	83	85	88	91	94		101	105	109	114	119	124	130	136
	45	80	82	84	87	89	93	96	100	104	109	114	119	124	130	137	
	50	81	83	85	88	91	95	99	103	108	113	118	124	131	137		
	55	81	84	86	89	93	97	101	106	112	117	124	130	137			
	60	82	84	88	91	95	100	105	110	116	123	129	137				
	65	82	85	89	93	98	103	108	114	121	128	136					
	70	83	86	90	95	100	105	112	119	126	134						
	75	84	88	92	97	103	109	116	124	132							
	80	84	89	94	100	106	113	121	129								
	85	85	90	96	102	110	117	126	135								
	90	86	91	98	105	113	122	131									
	95	86	93	100	108	117	127										
	100	87	95	103	112	121	132										

 Caution
 Extreme Caution
 Danger
 Extreme Danger

Extreme Caution

- Ensuring water and shaded areas available
- Acclimating workers
- Emergency planning and response
- Training workers and supervisors on the signs of heat stress and preventative measures
- Modified work schedules and/or rotating out workers
- Monitoring of workers for signs of heat stress

Daily Coordination Meeting



14:00 Sign In