

Daily Coordination Meeting



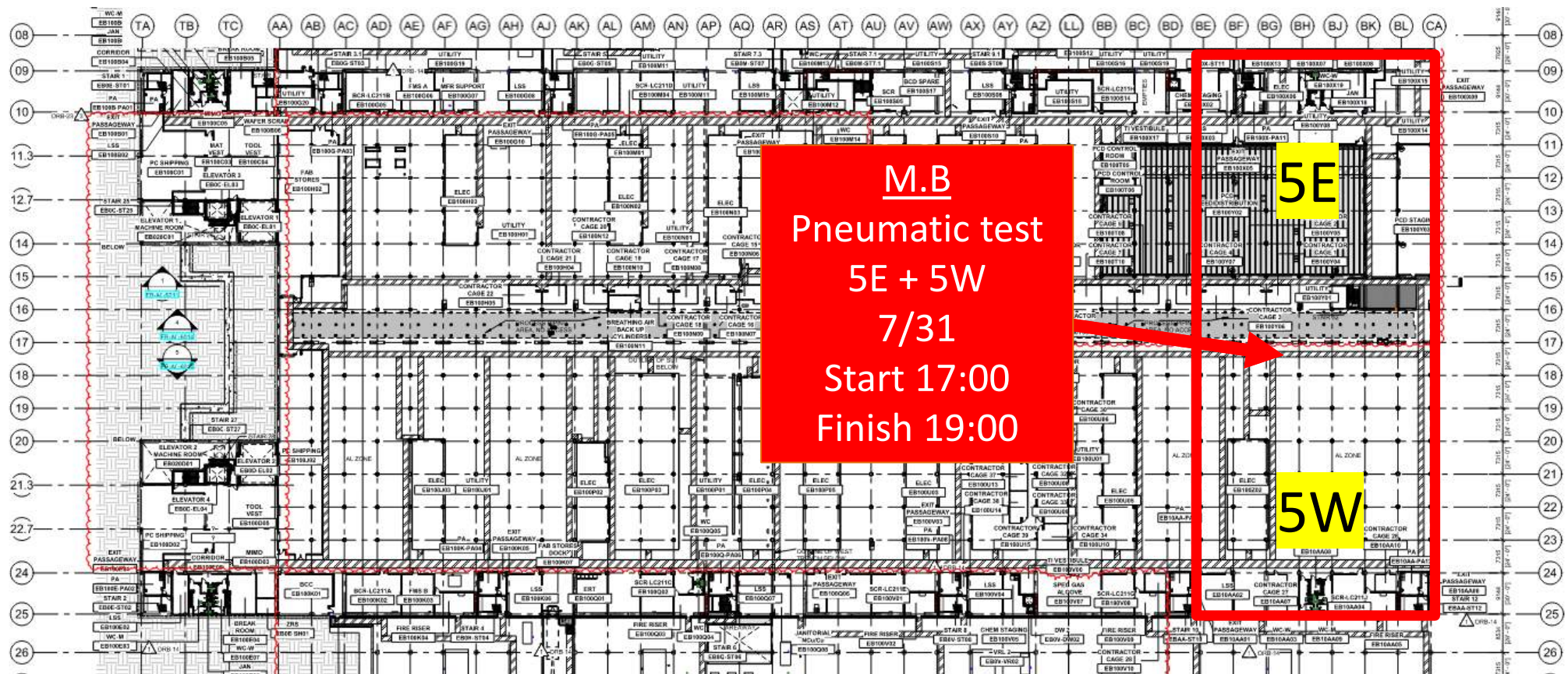
14:00 Sign In

Daily Coordination Meeting

General Topics:

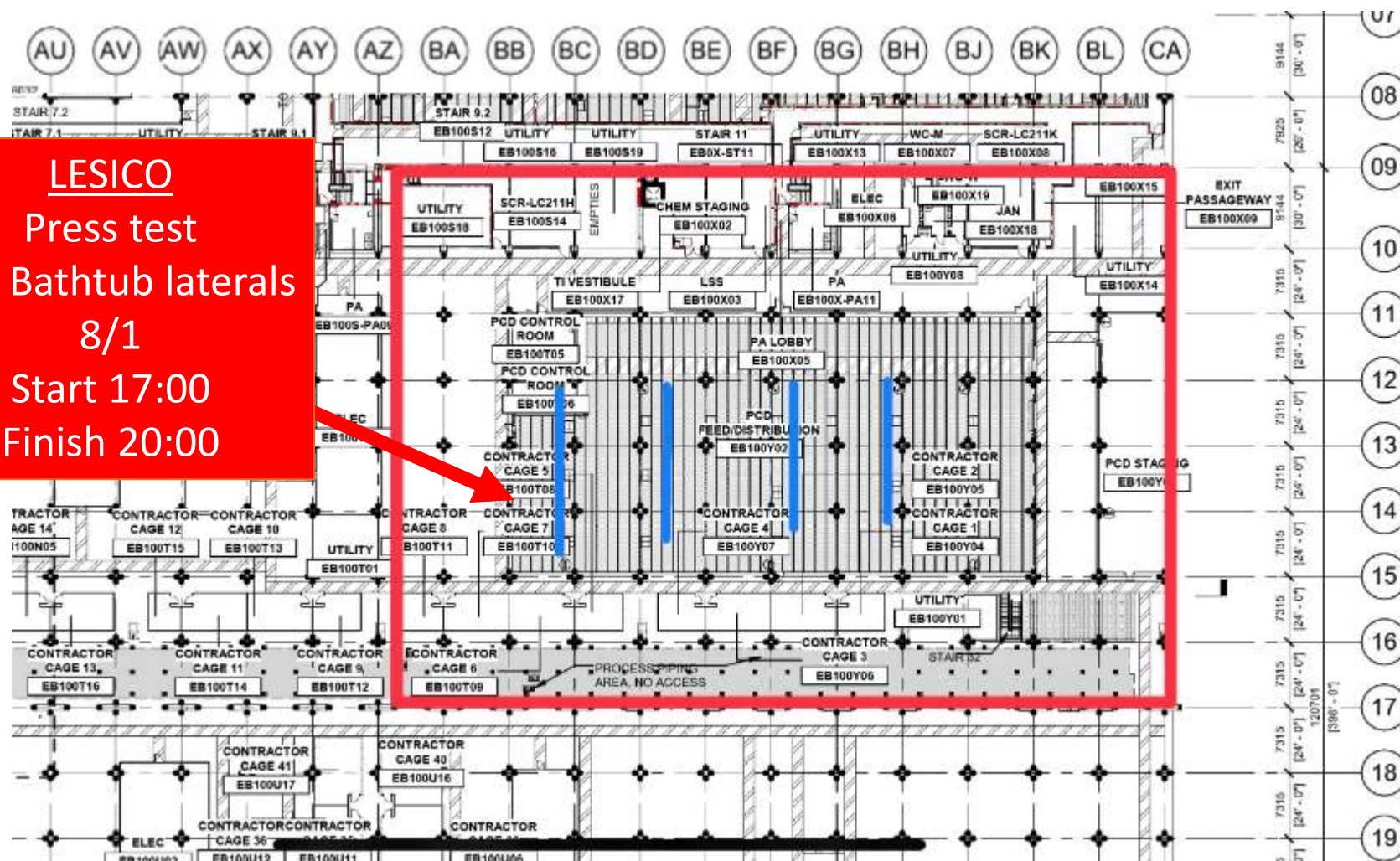
- Deviation from plan

UTILITY LEVEL MOD1





LESICO
Press test
PCD Bathtub laterals
8/1
Start 17:00
Finish 20:00





ELRAM
PCD Bathtub walls!

Talad
Dismantle of J03 cage
Done Today

Belfor
FMS rooms
handover 14:00

COMBE
Waste pipes at PCD
Bathtub

HSI
Fireriser room 5W
formwork dismantle

PCD Bathtub walls!

Talad
Dismantle of
J03 cage
Done Today

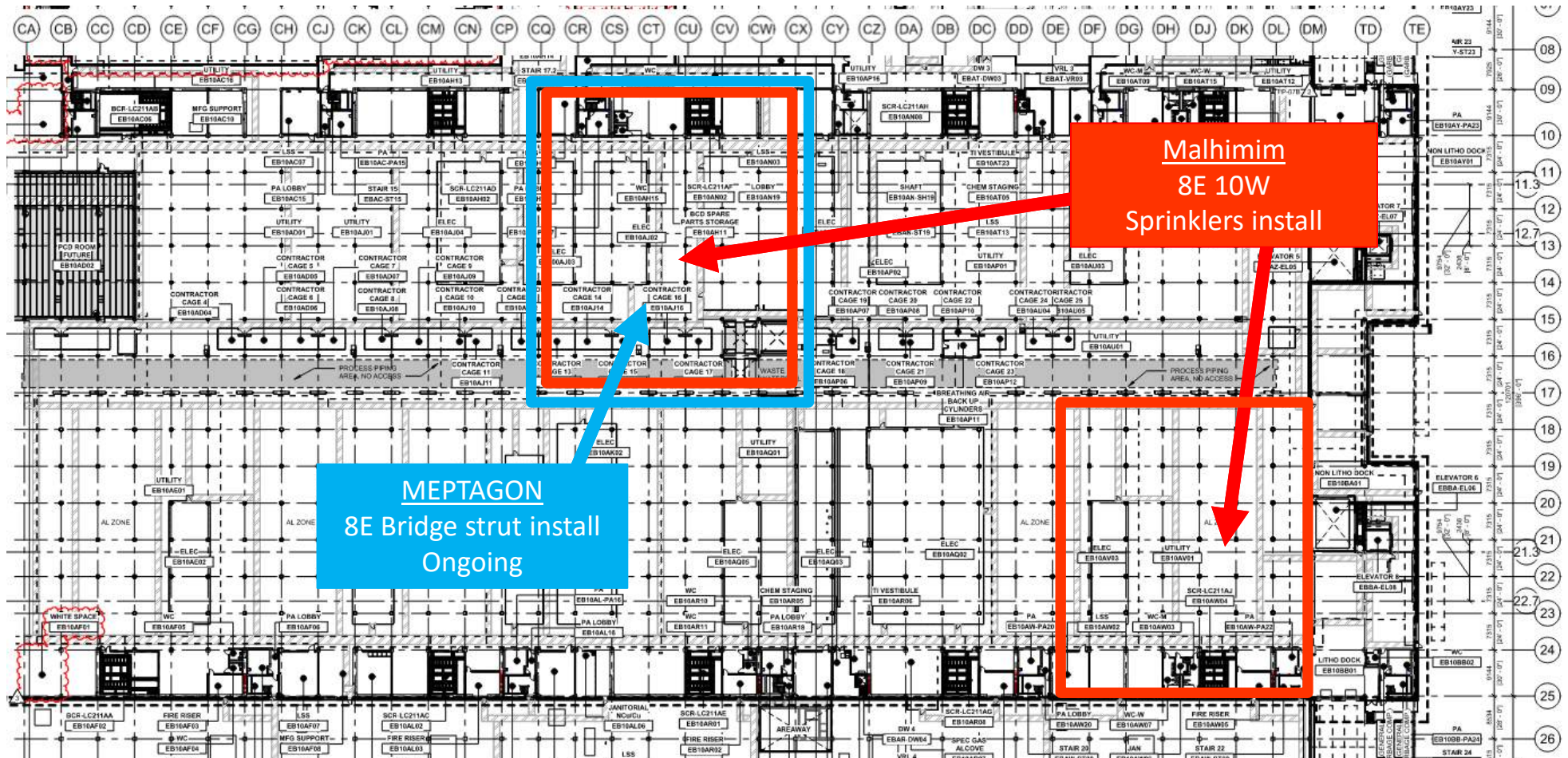
Belfor
FMS rooms
handover 14:00

COMBE
Waste pipes at PCD
Bathtub

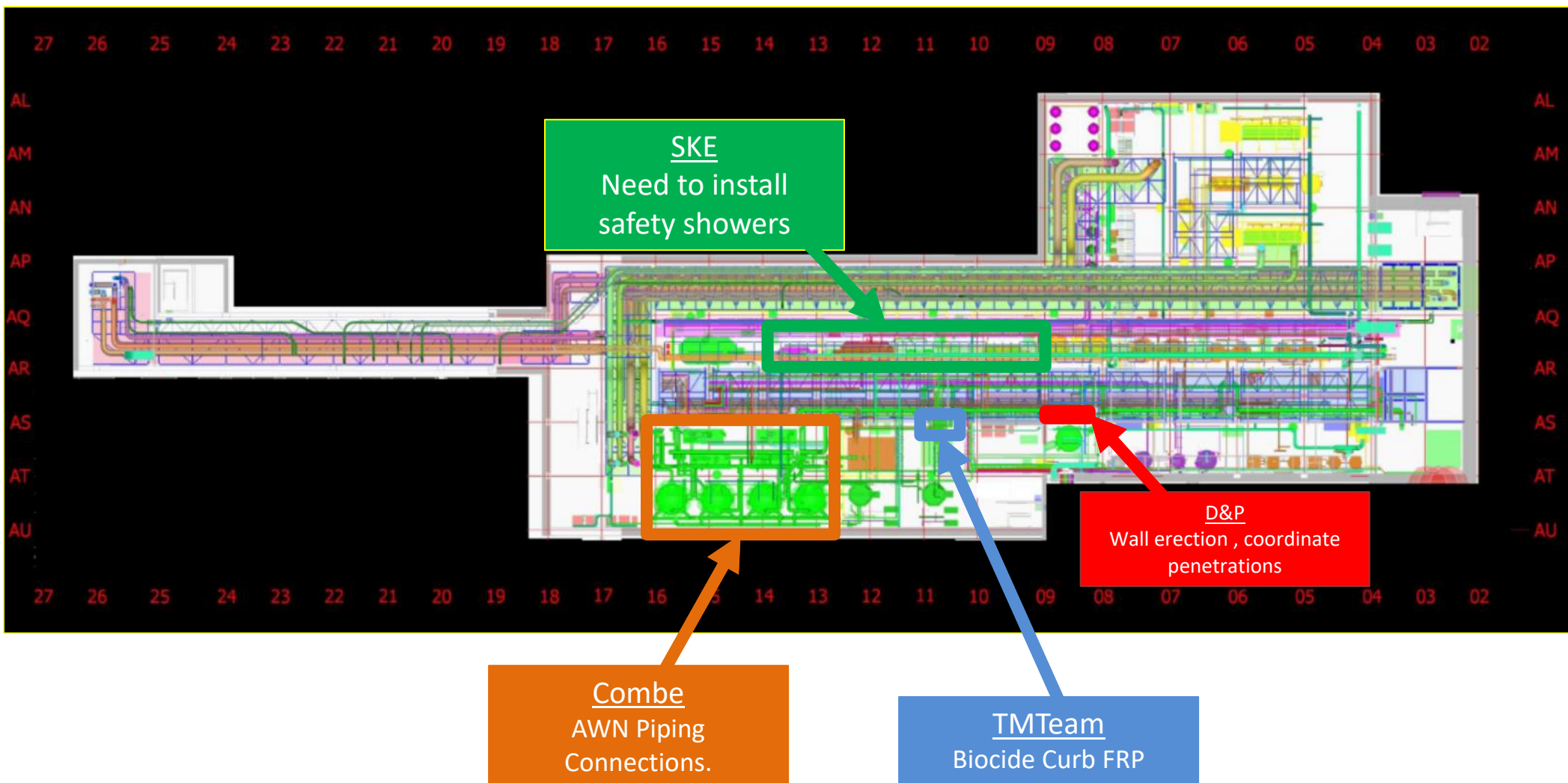
HSI
Fireriser room 5W
formwork dismantle

ELRAM
BCC room
Finish 8/5th

UTILITY LEVEL MOD2

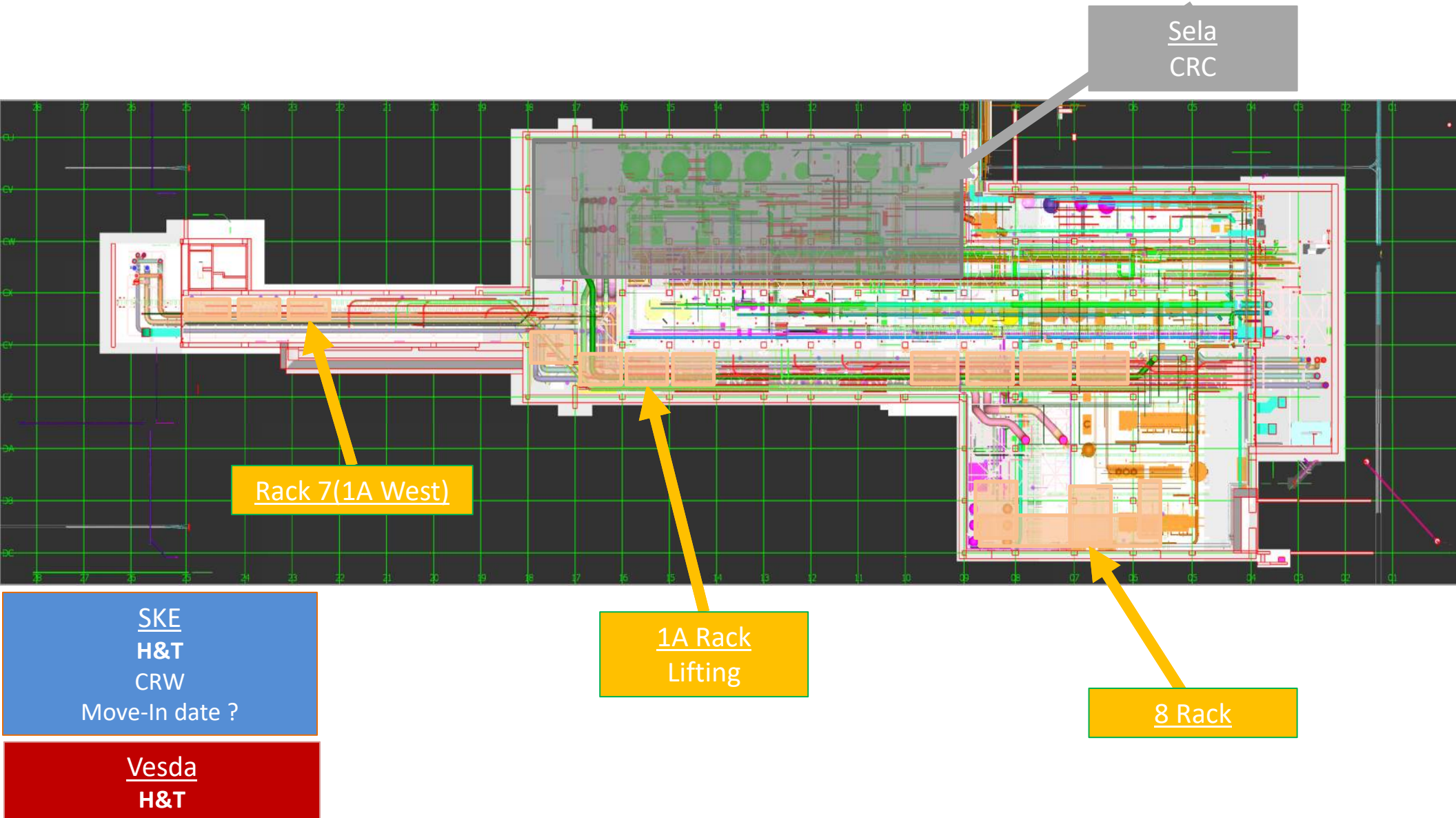


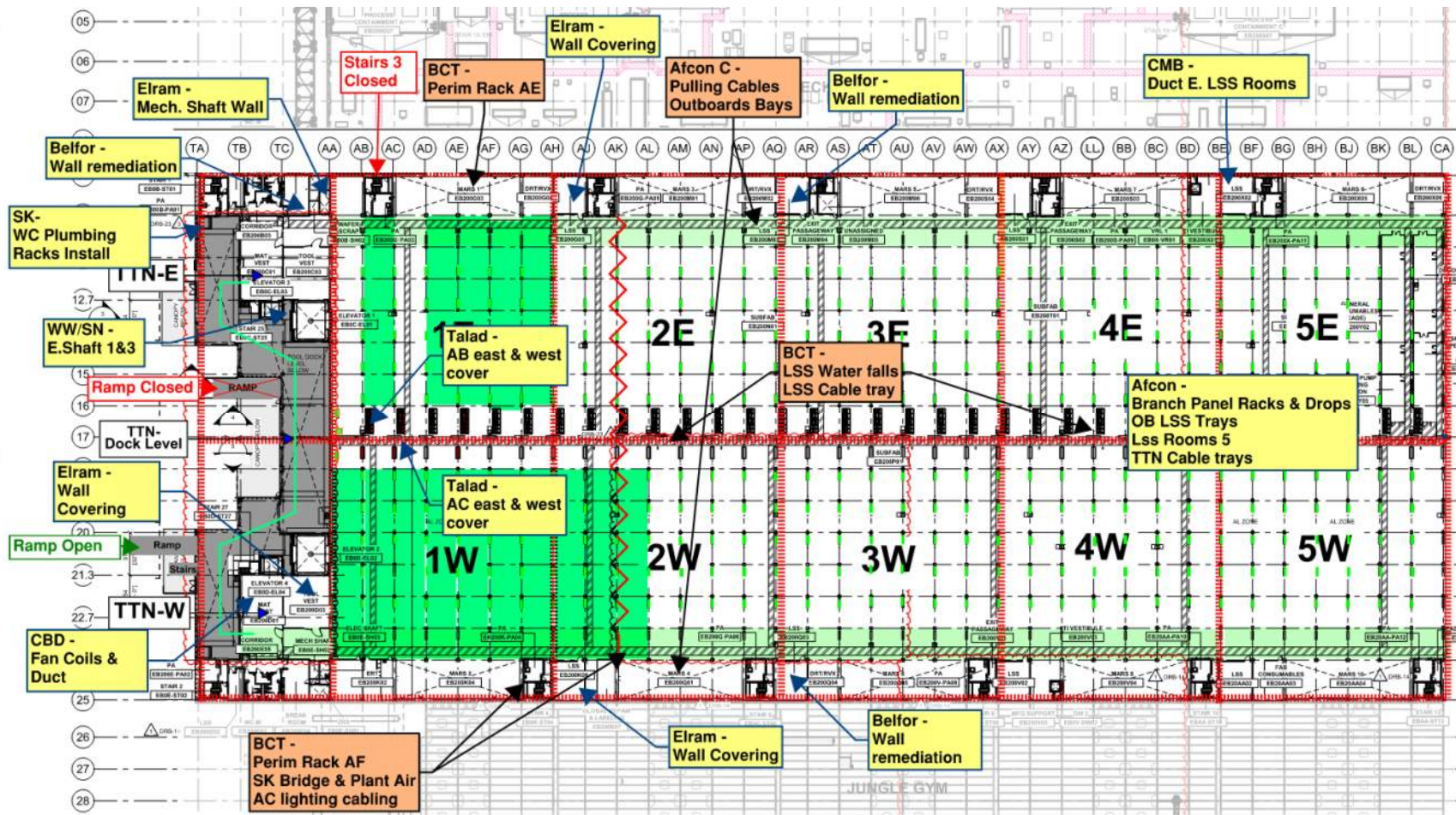
SUT 38.1 LEVEL



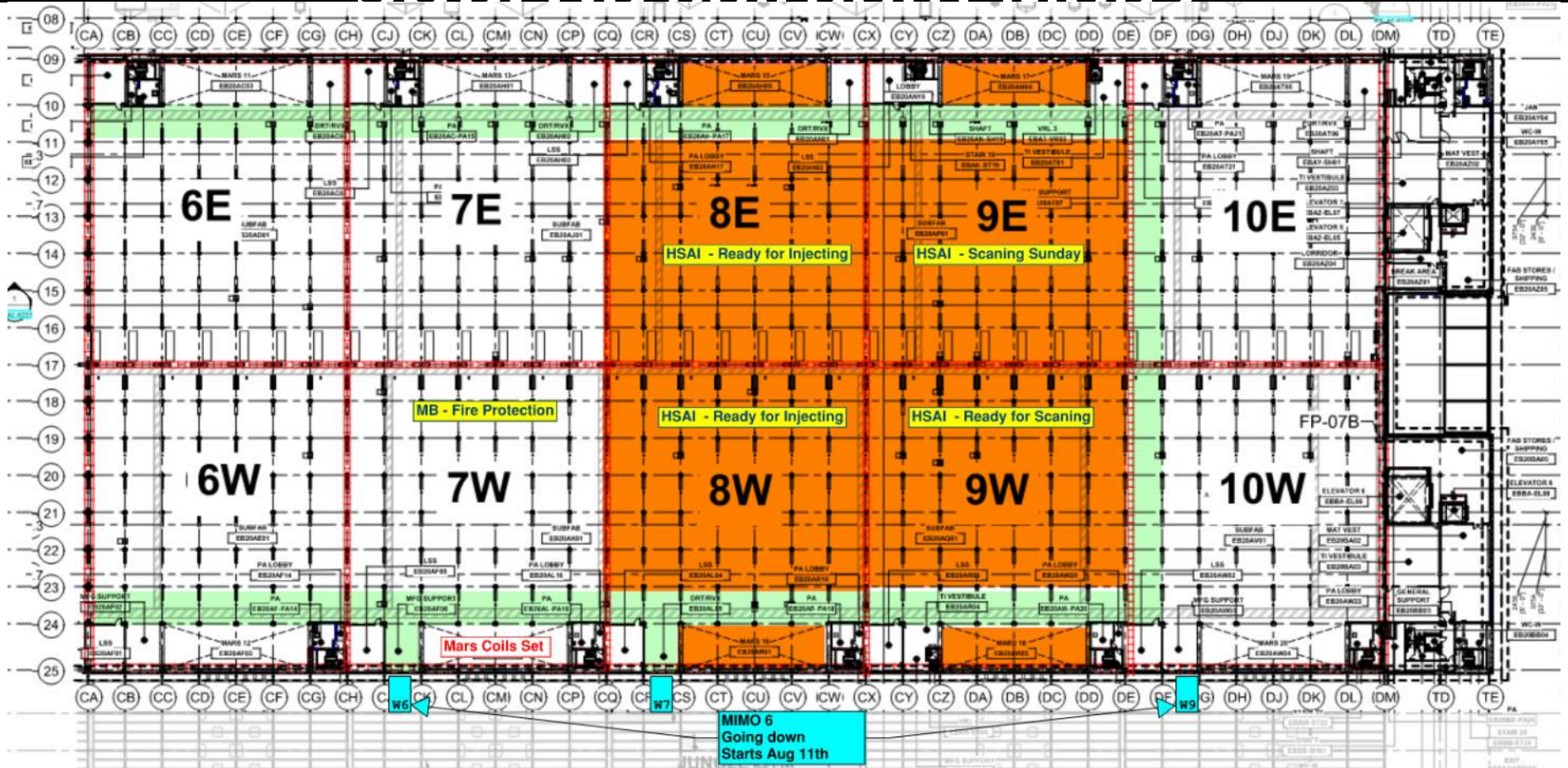


SUT 38.2 LEVEL





SUBFAB BUILDOUT MOD 2



CRC Beauty Cote Work Plan.

Be well prepared to protect CRC

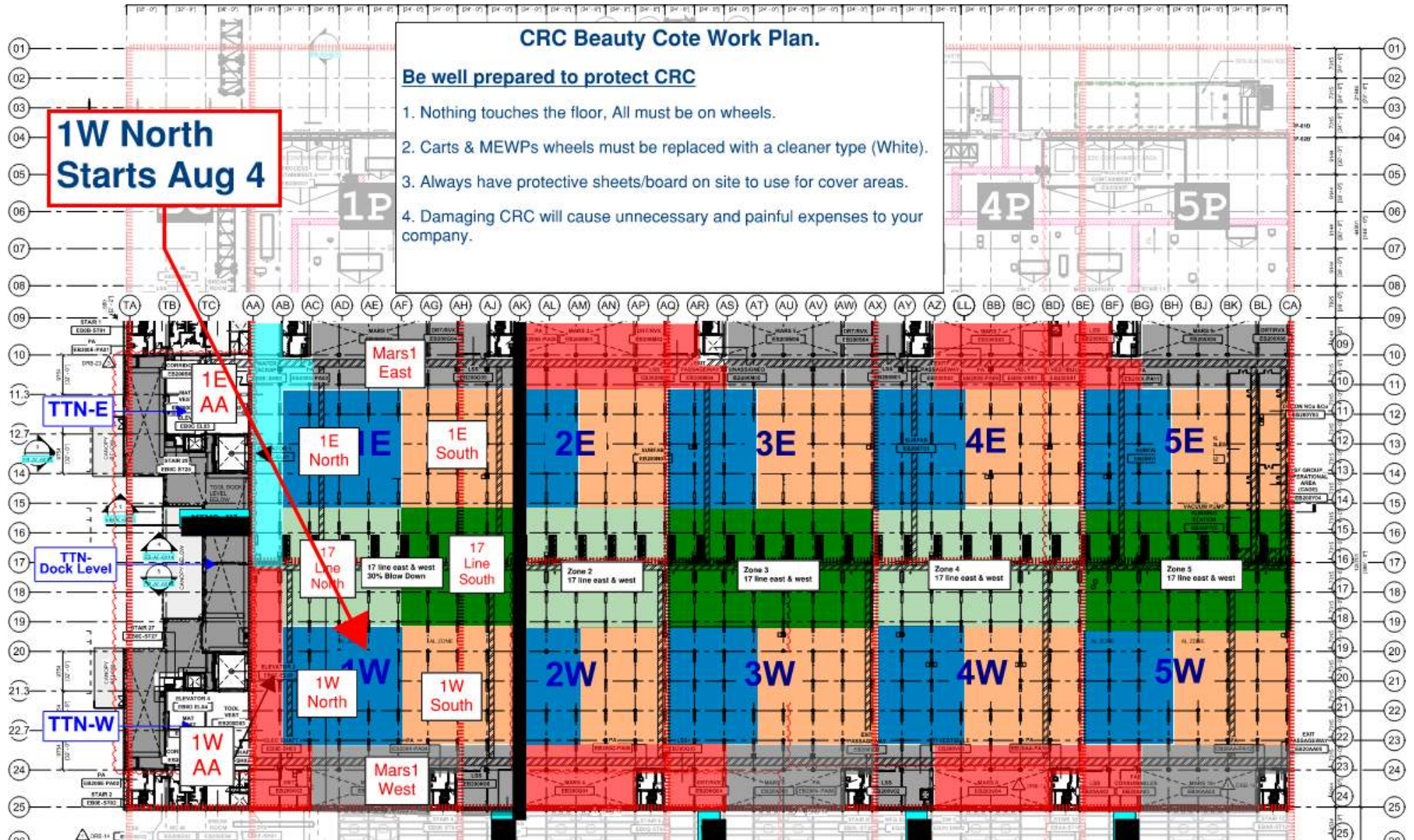
1. Nothing touches the floor, All must be on wheels.
2. Carts & MEWPs wheels must be replaced with a cleaner type (White).
3. Always have protective sheets/board on site to use for cover areas.
4. Damaging CRC will cause unnecessary and painful expenses to your company.

Be well prepared to protect CRC

1. Nothing touches the floor, All must be on wheels.
2. Carts & MEWPs wheels must be replaced with a cleaner type (White).
3. Always have protective sheets/board on site to use for cover areas.
4. Damaging CRC will cause unnecessary and painful expenses to your company.

- ### Be well prepared to protect CRC
1. Nothing touches the floor, All must be on wheels.
 2. Carts & MEWPs wheels must be replaced with a cleaner type (White).
 3. Always have protective sheets/board on site to use for cover areas.
 4. Damaging CRC will cause unnecessary and painful expenses to your company.

1W North Starts Aug 4





- CR level:**
- Alcon** - Cable trays, modules and stickers 1W, 2E, 2W
 - MB** - 1E drops, 1W drops, 2E- drops
 - Elram** - 10, 24 columns fix/wrap.
9,25 line columns wrapping
 - Meptagon** - Zero tolerance pipes 5E-5W, I&C preparations
 - D&P** - Ceiling rods 1E, 5E blades install.
 - Tzur-esh** - 24-25 lines, 4E-4W
 - HYG** - 1W Litho crane plates install, 5W Litho crane steel
 - PT** - Duct prep for test AA-AH east
 - Talad** - Seismic cables 1W.

Belfore - 1W 25 line done
1E 9 Line Ongoing

NTTEW

WW/SN - west side
welding tabs and
replacing beams
Elram - East/West floor
done QA/QC
SK - east side pipes
needs to be completed
HYG - East to finish steel.
West receiving material

1E

2E

3E

4E

5E

FAB BALLROOM

1W

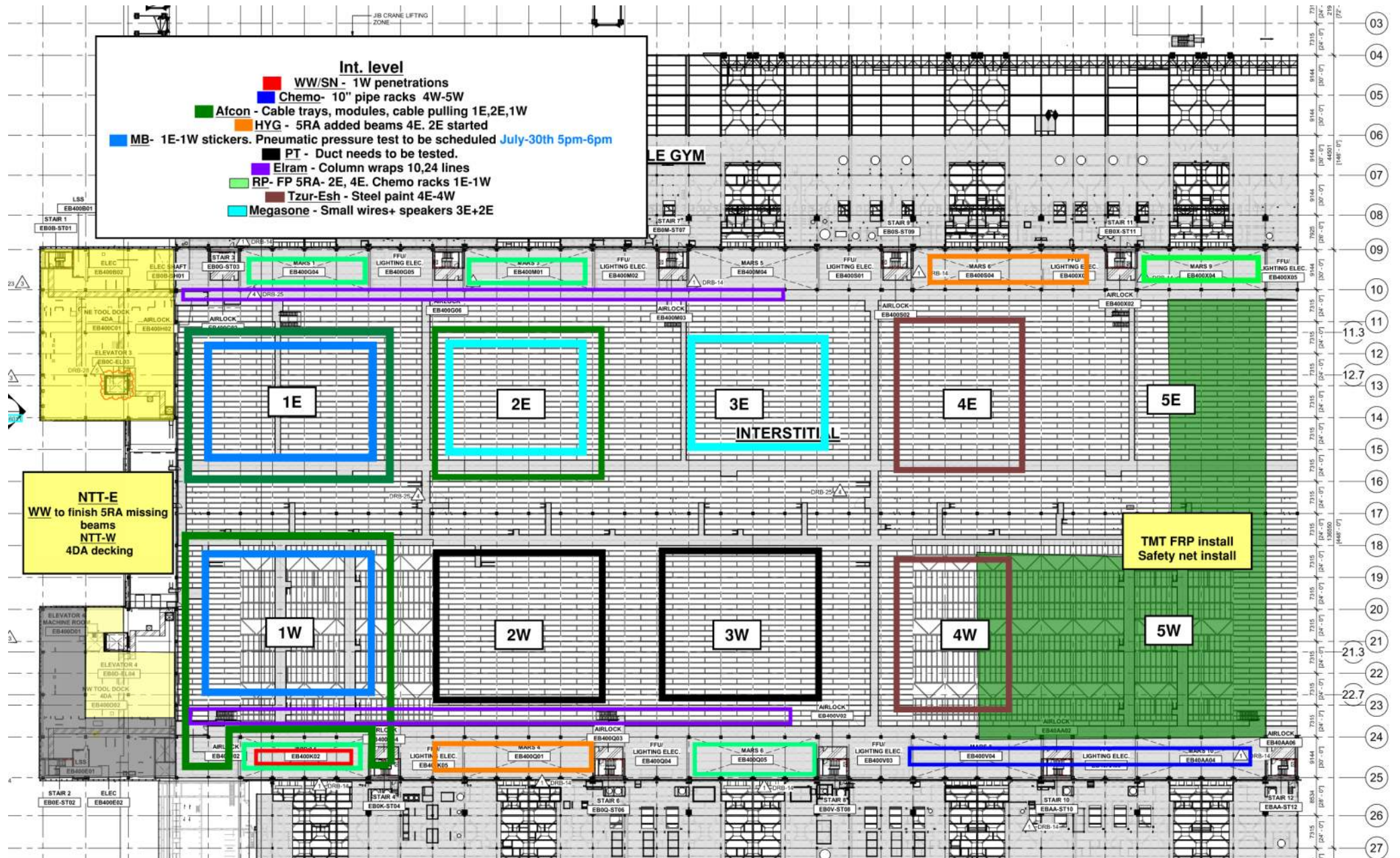
2W

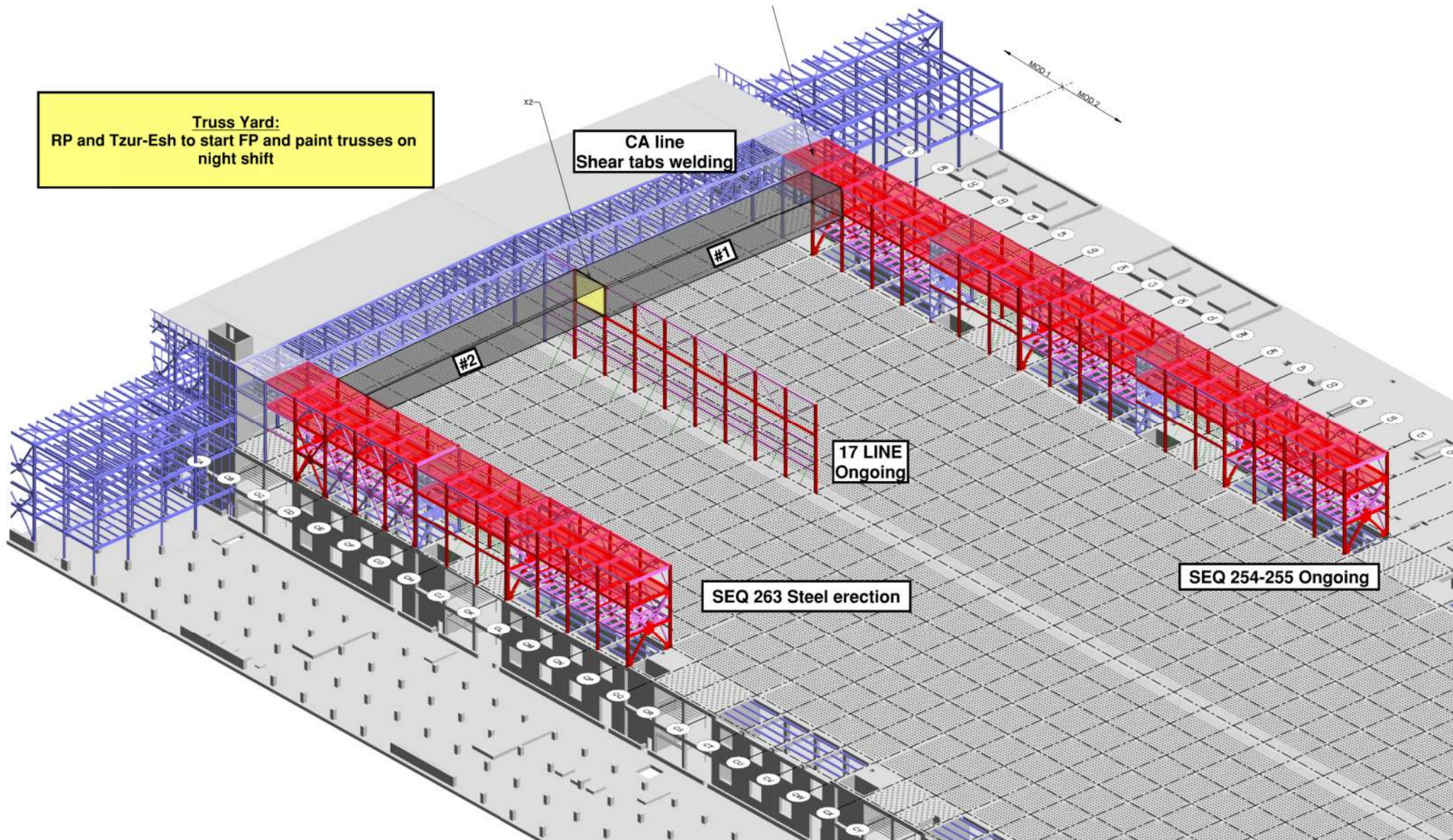
3W

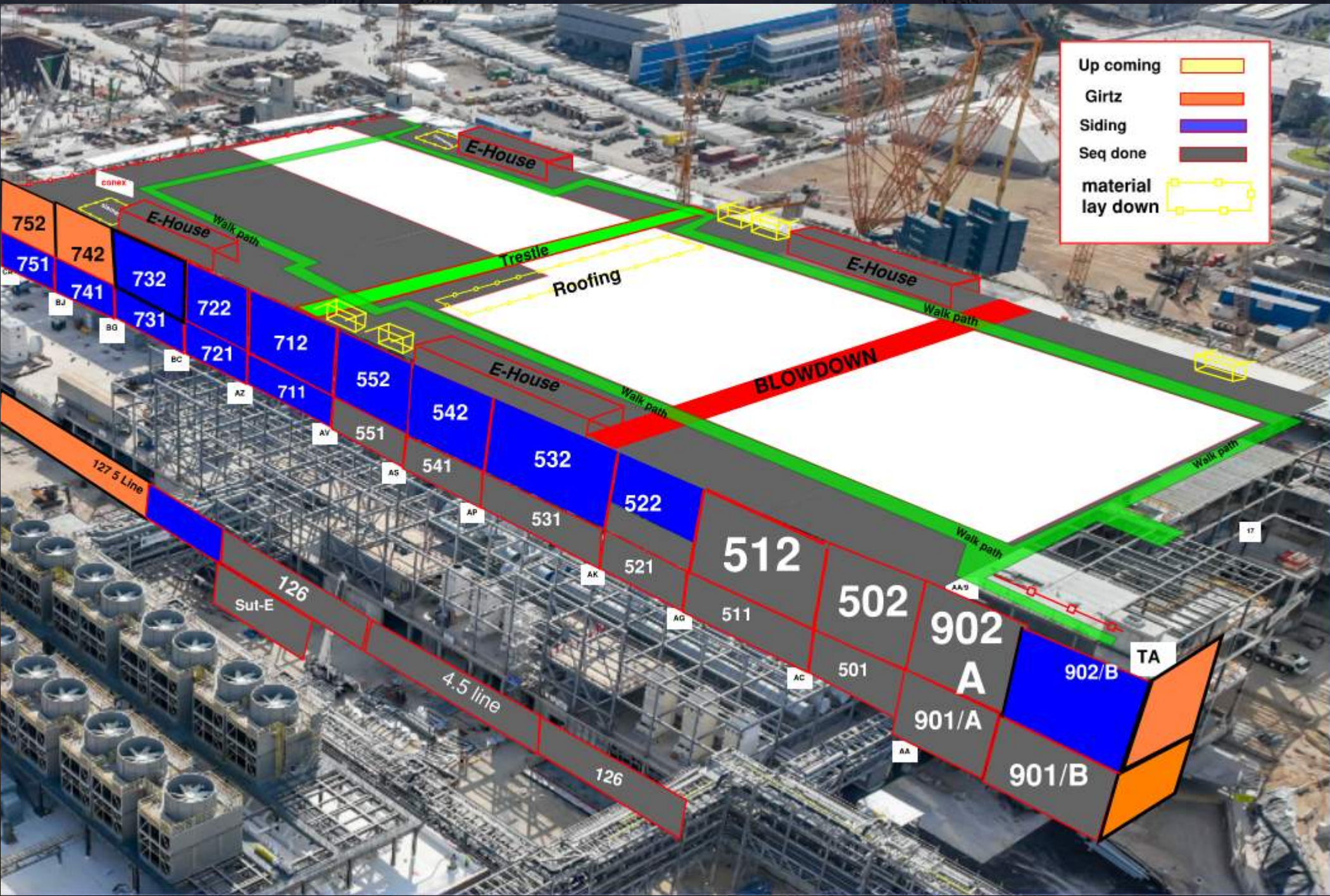
4W

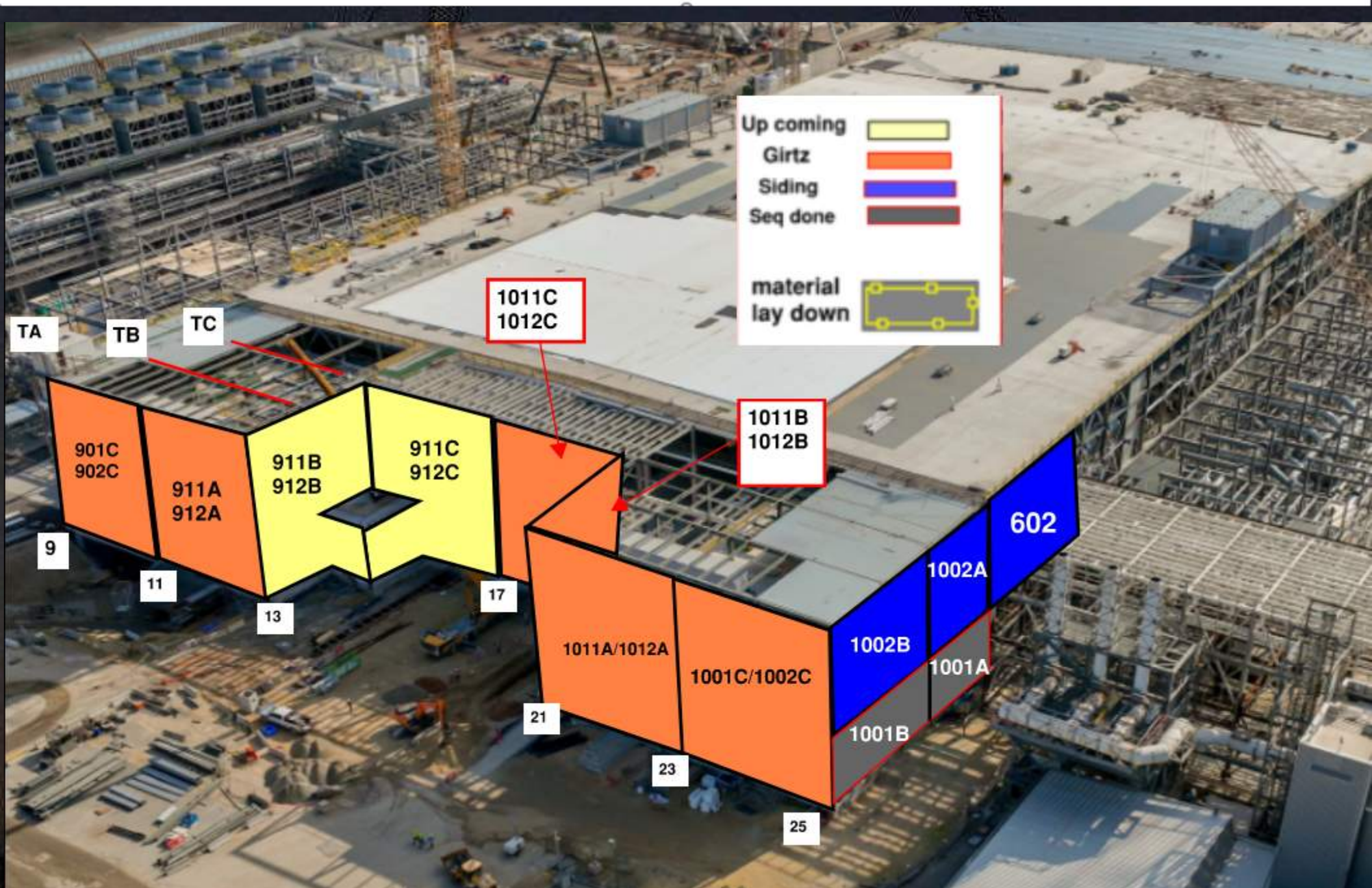
5W

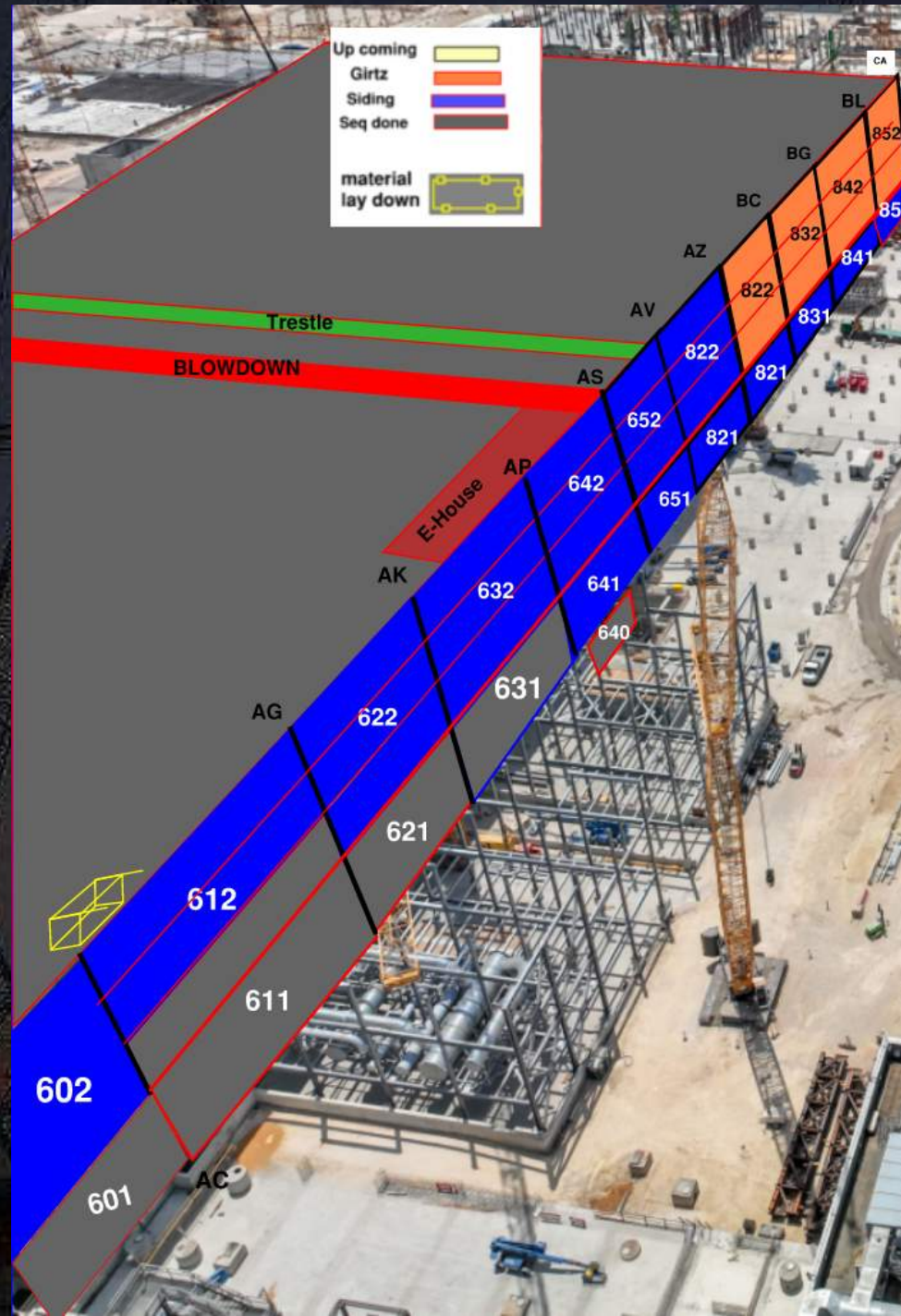
Link
RP - To start FP
blades







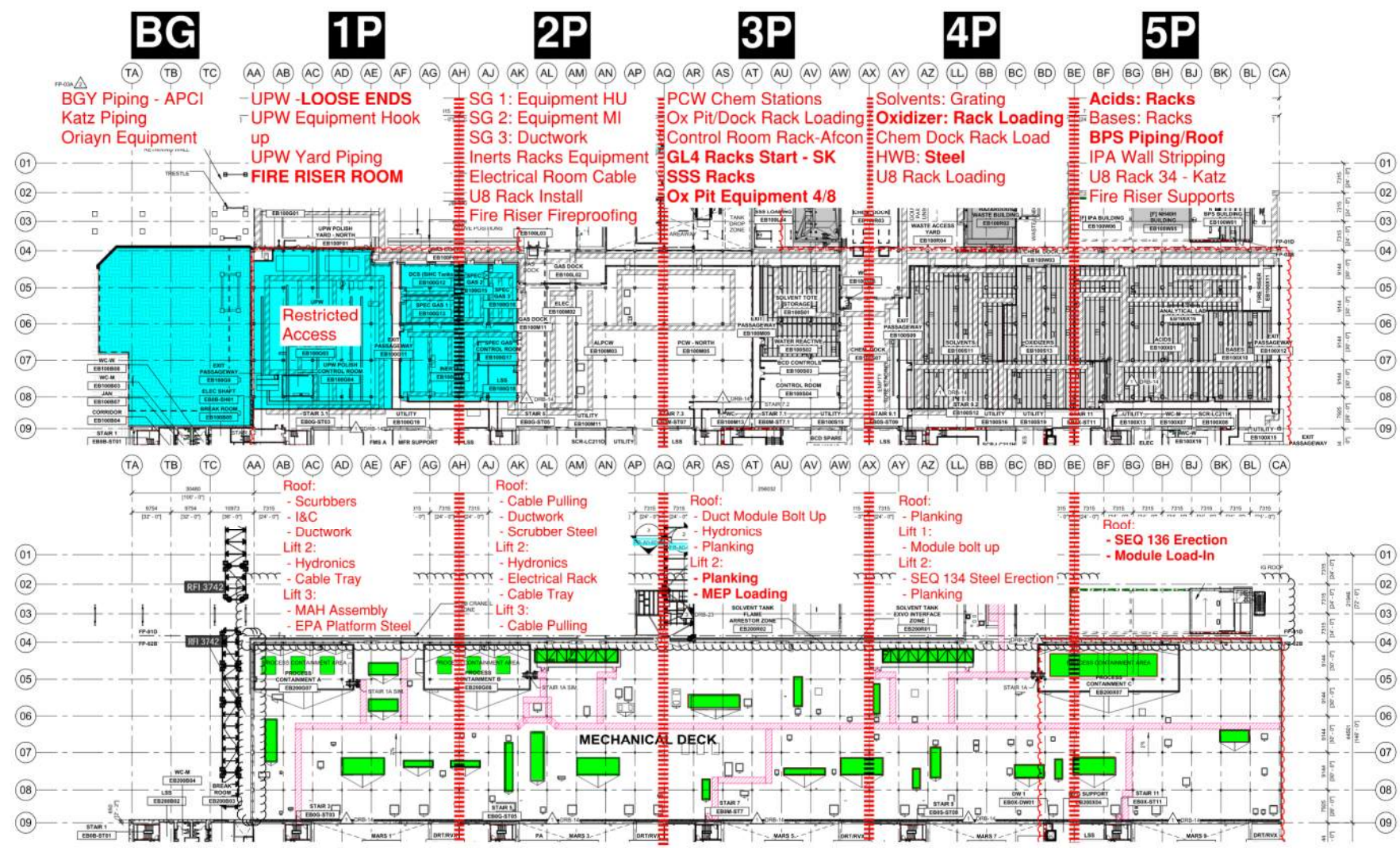




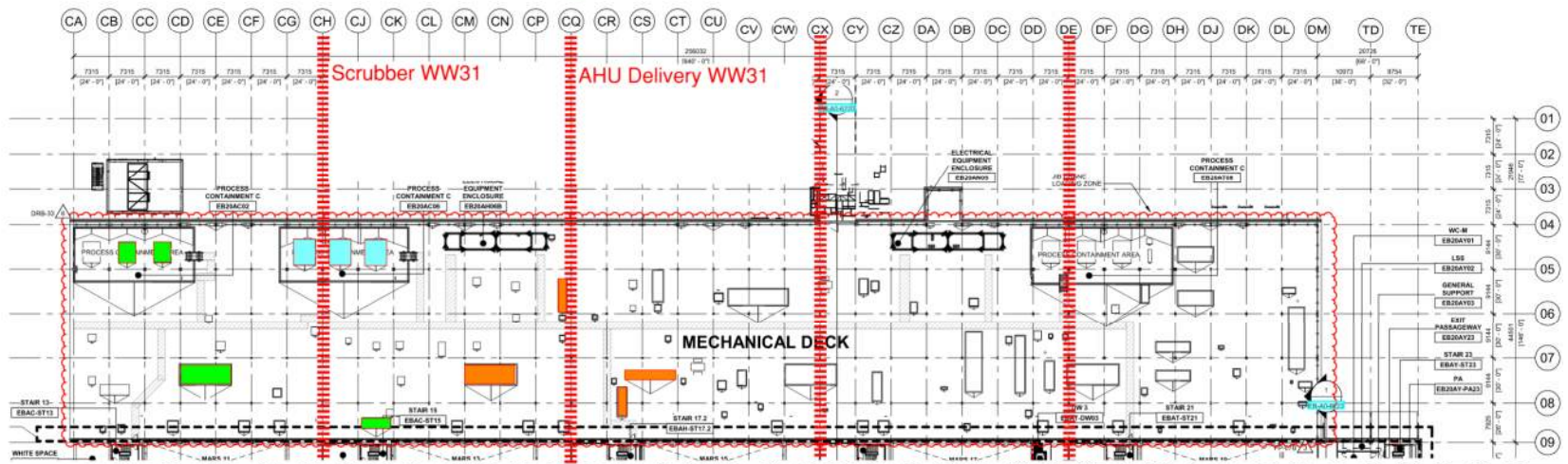
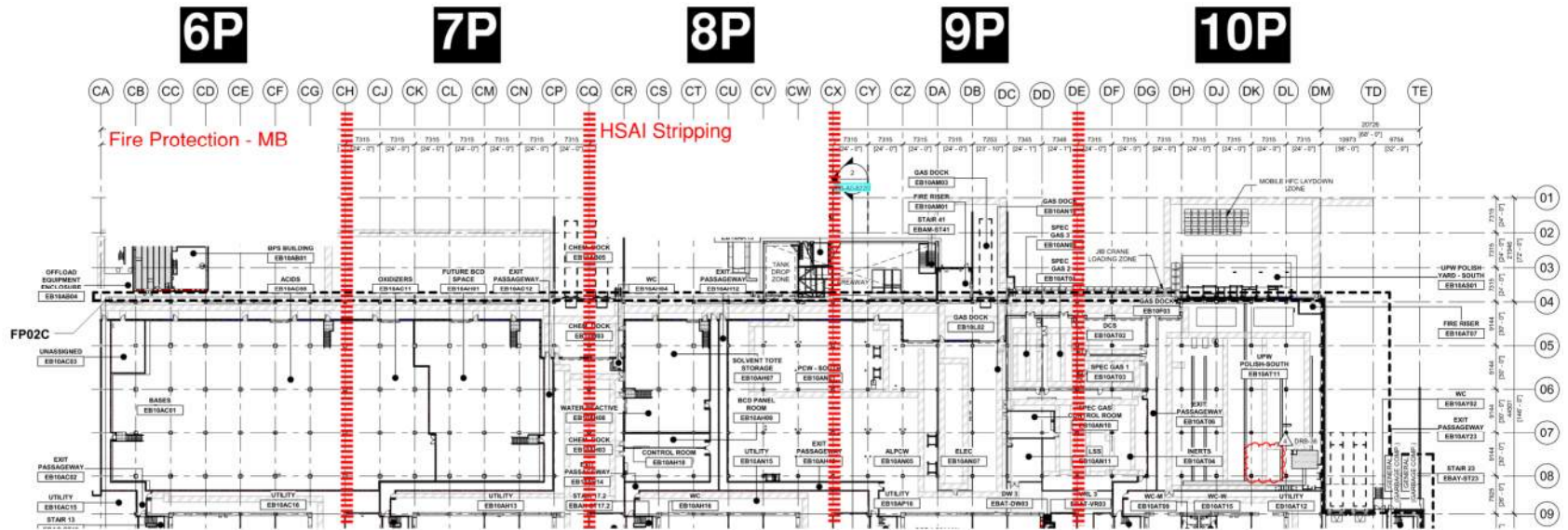
PSSS.1

Utility Level
1YA

PSSS Roof
2SA



PSSS.2





WJG 01J, 02J LIFT 2 & 3

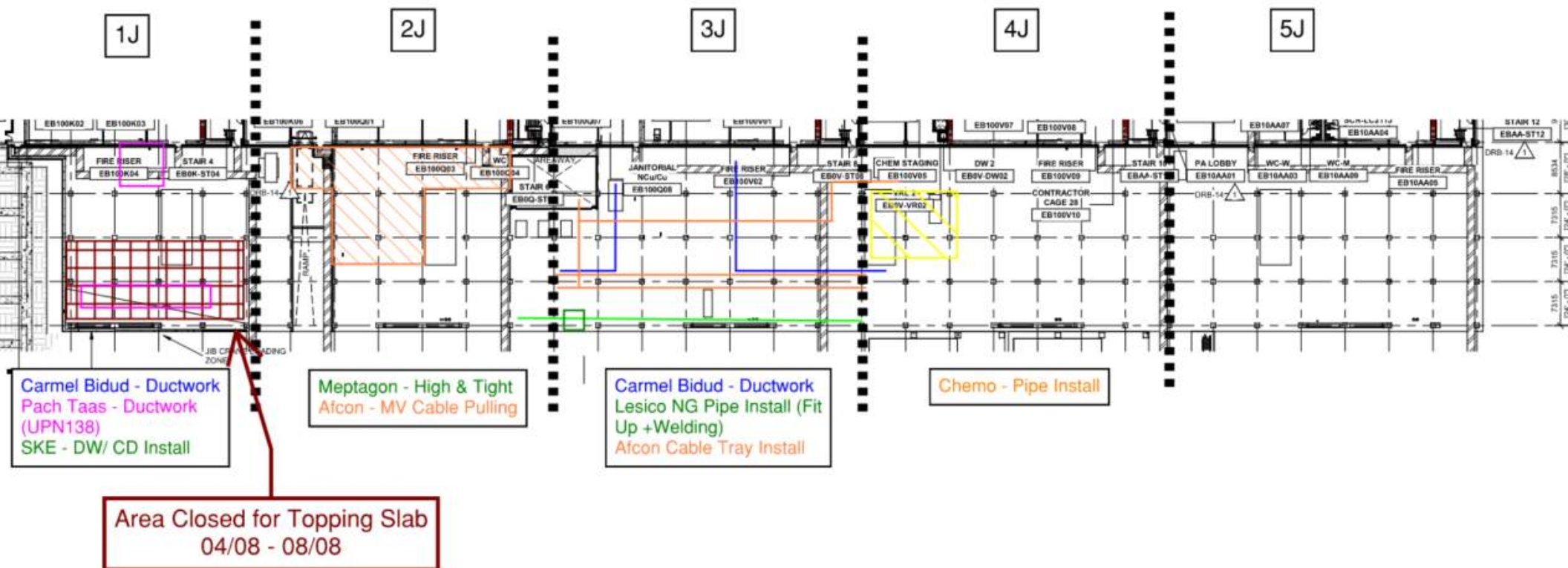


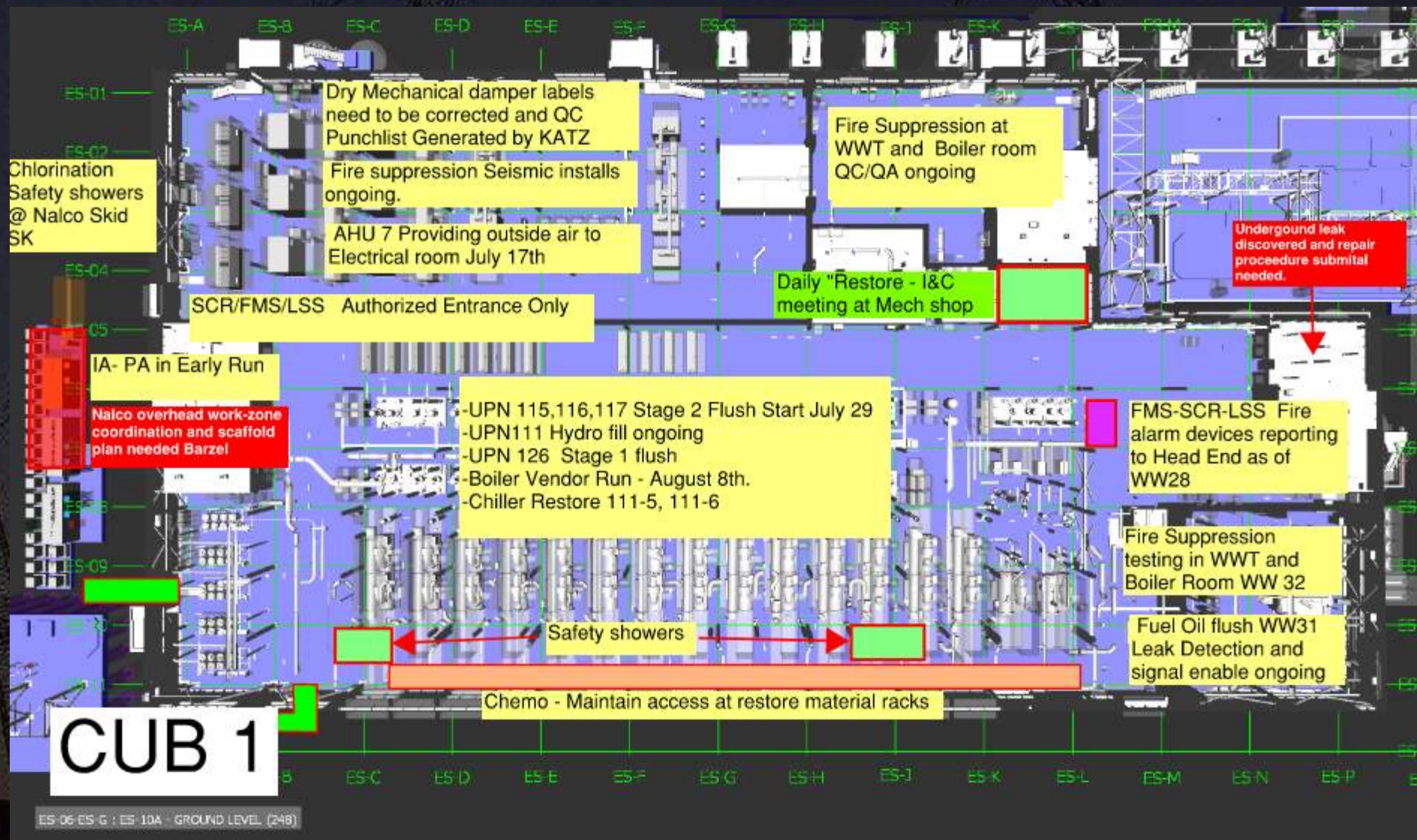
WJG 03J, 04J, 05J LIFT 2 & 3

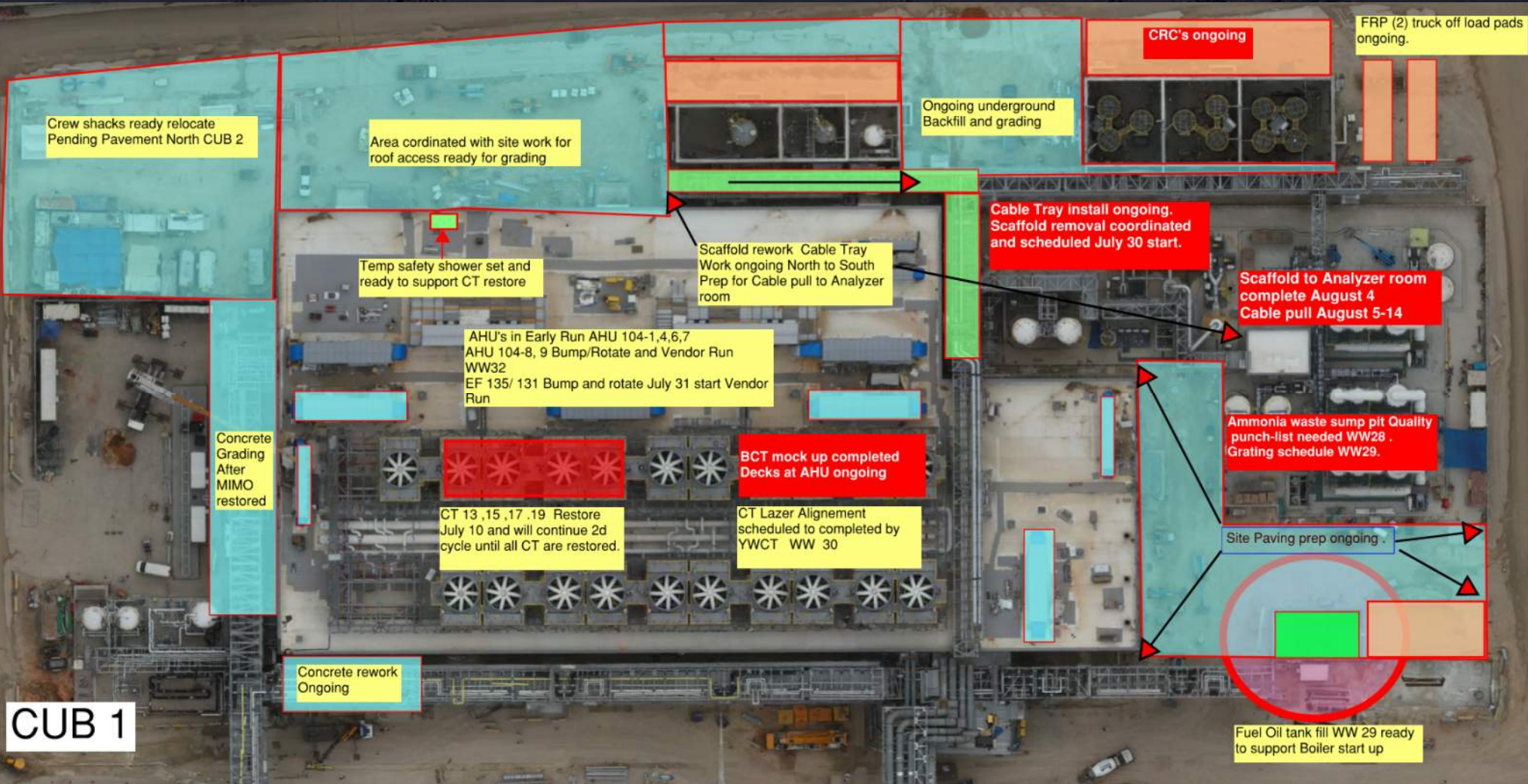


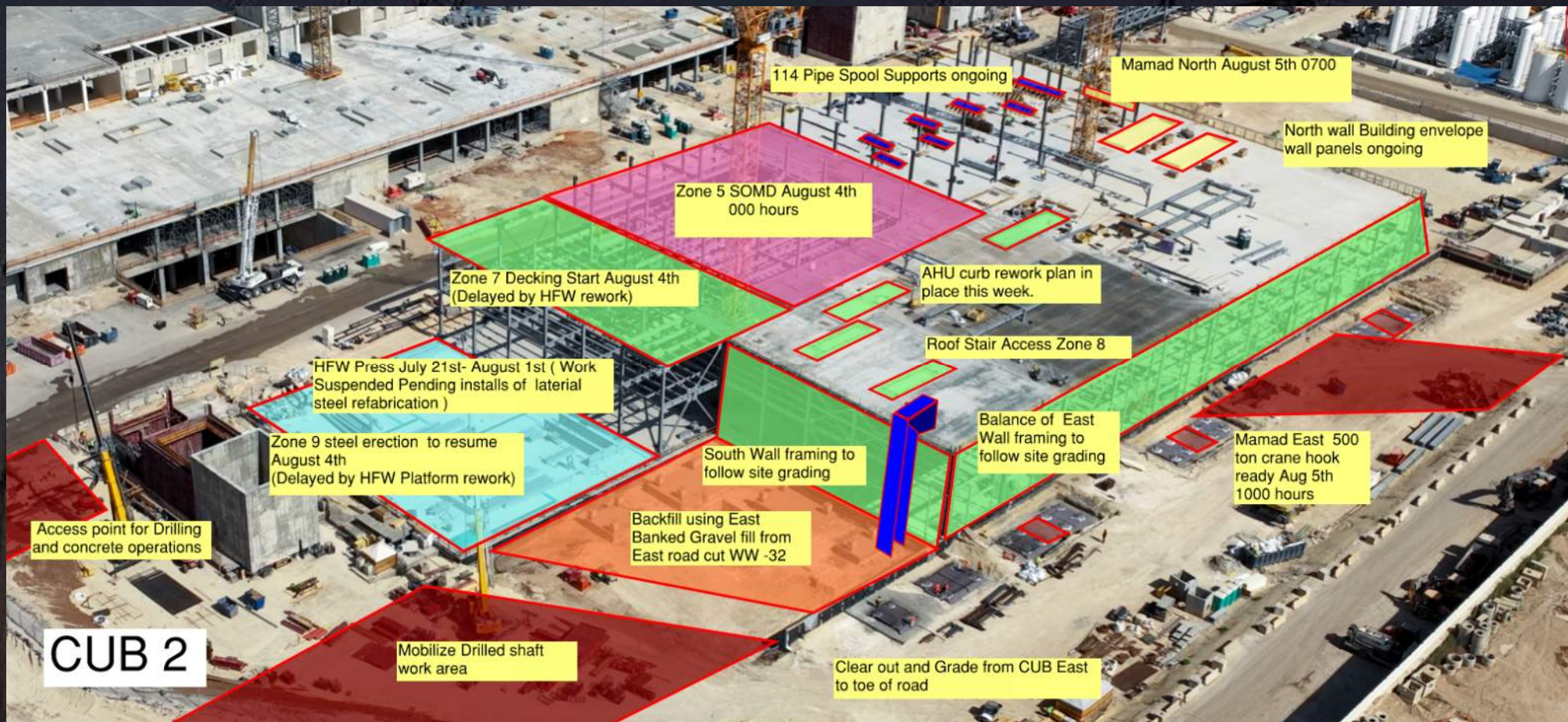


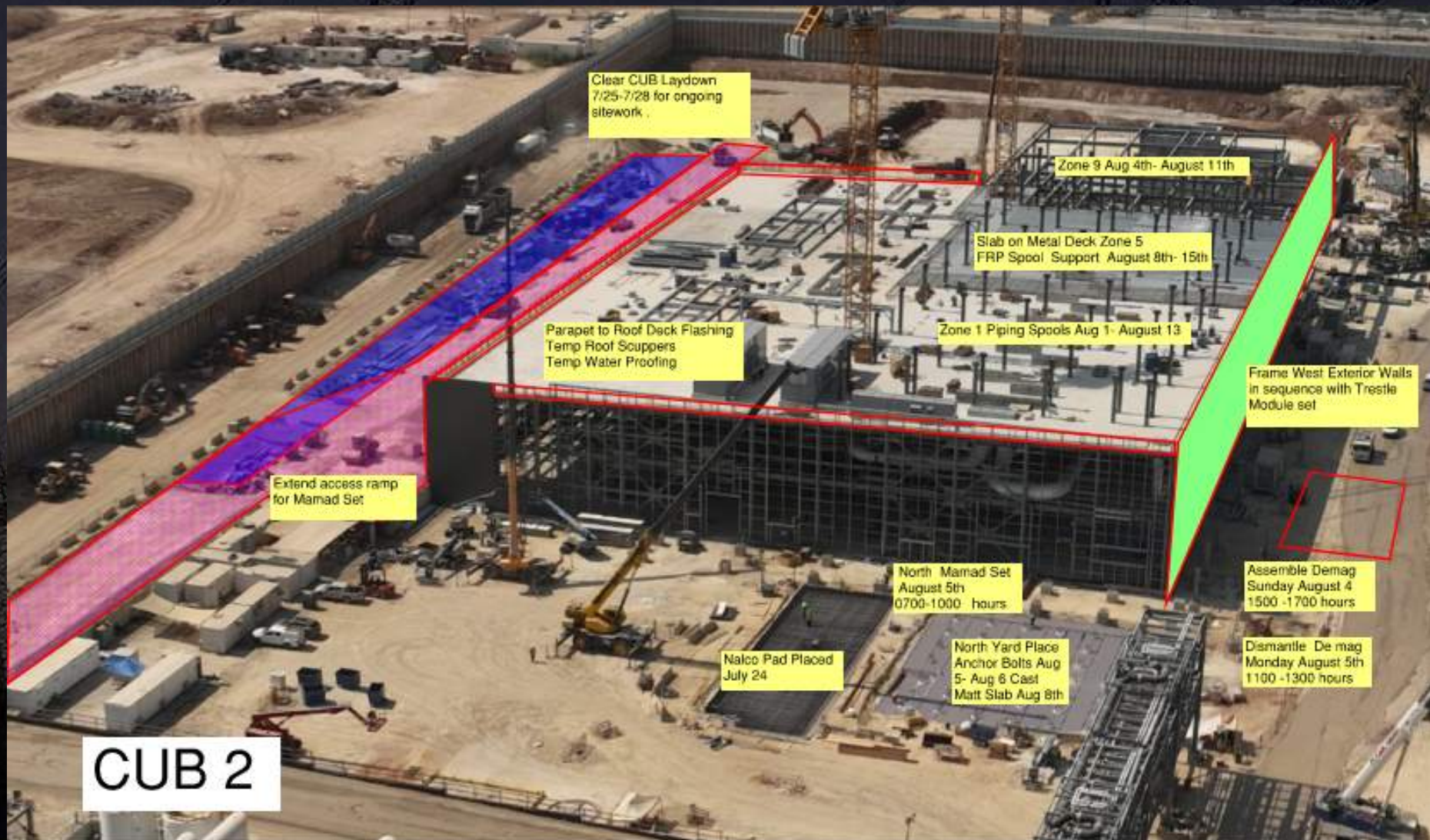
WJG UTILITY LEVEL BUILD OUT

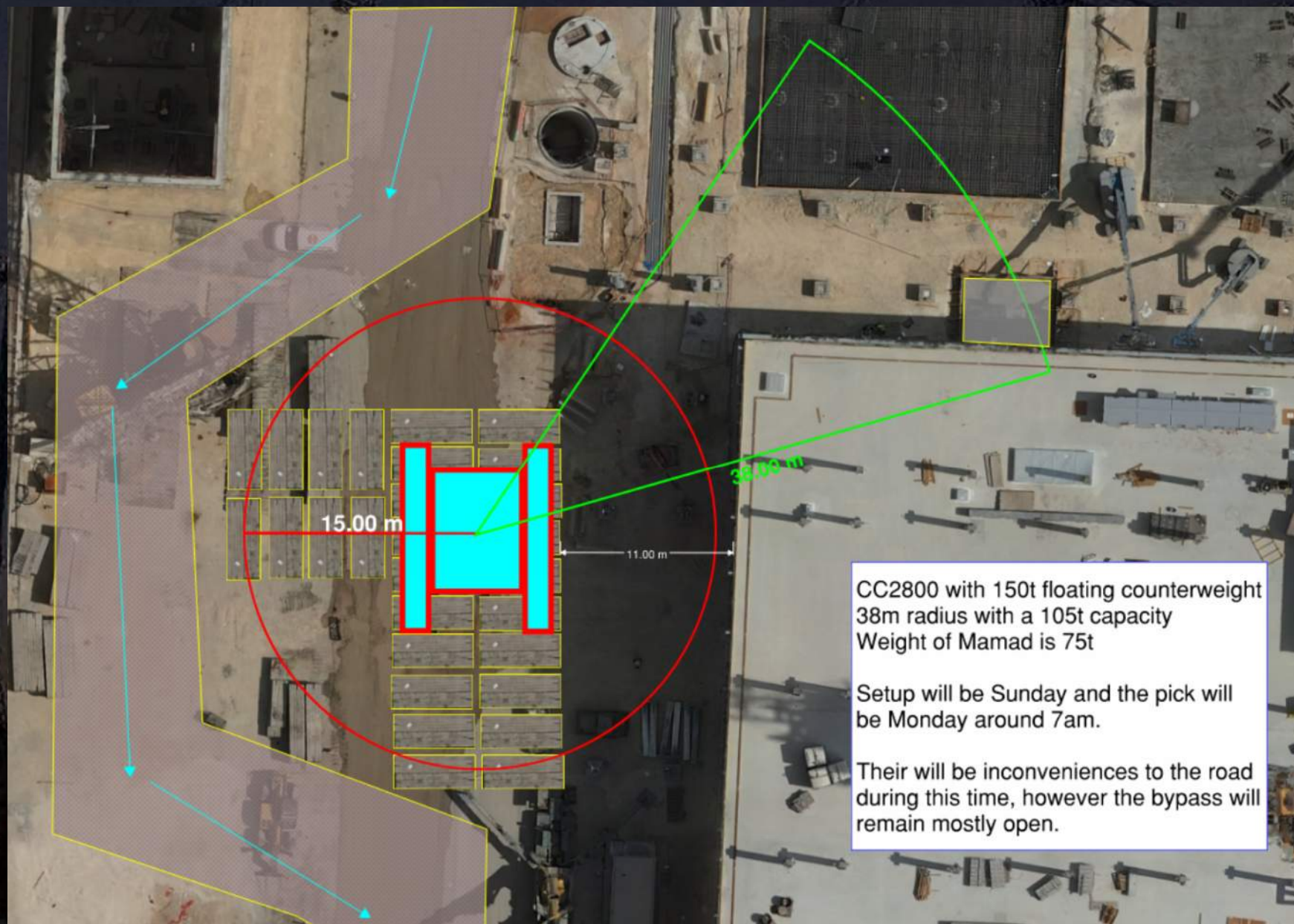


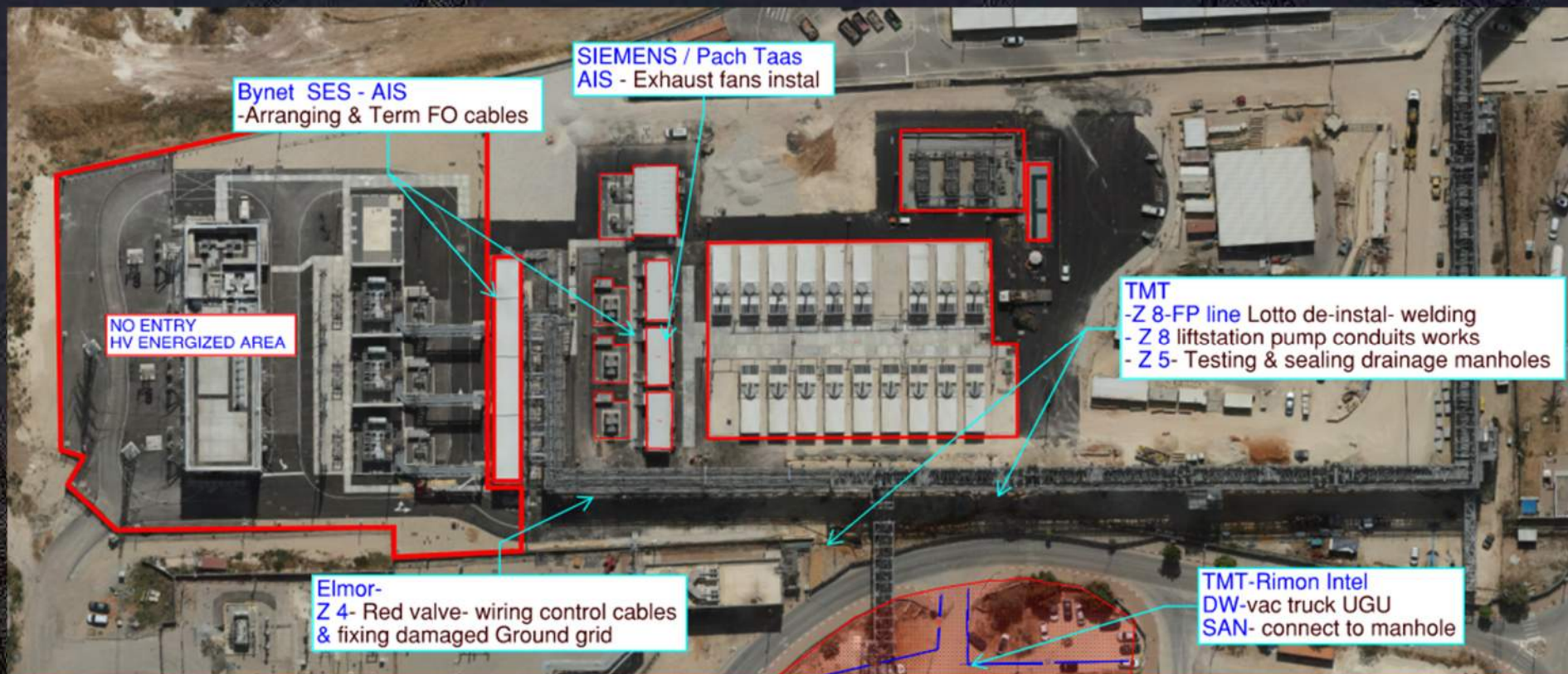








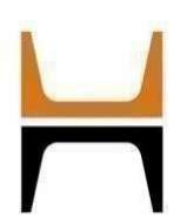






HOFFMAN CONSTRUCTION COMPANY





HOFFMAN CONSTRUCTION COMPANY

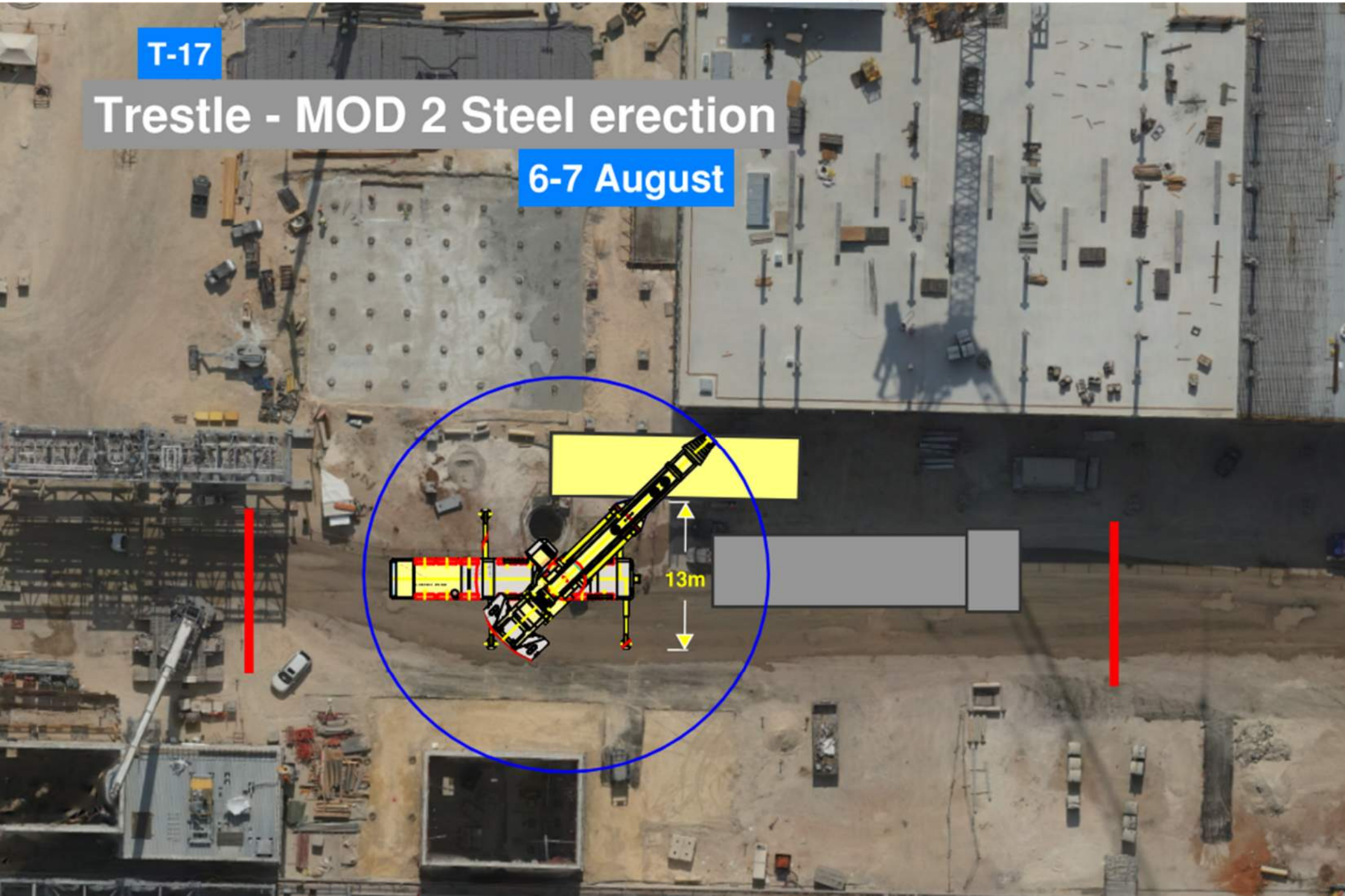


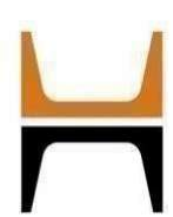
HOFFMAN
Sparrow  

T-17

Trestle - MOD 2 Steel erection

6-7 August



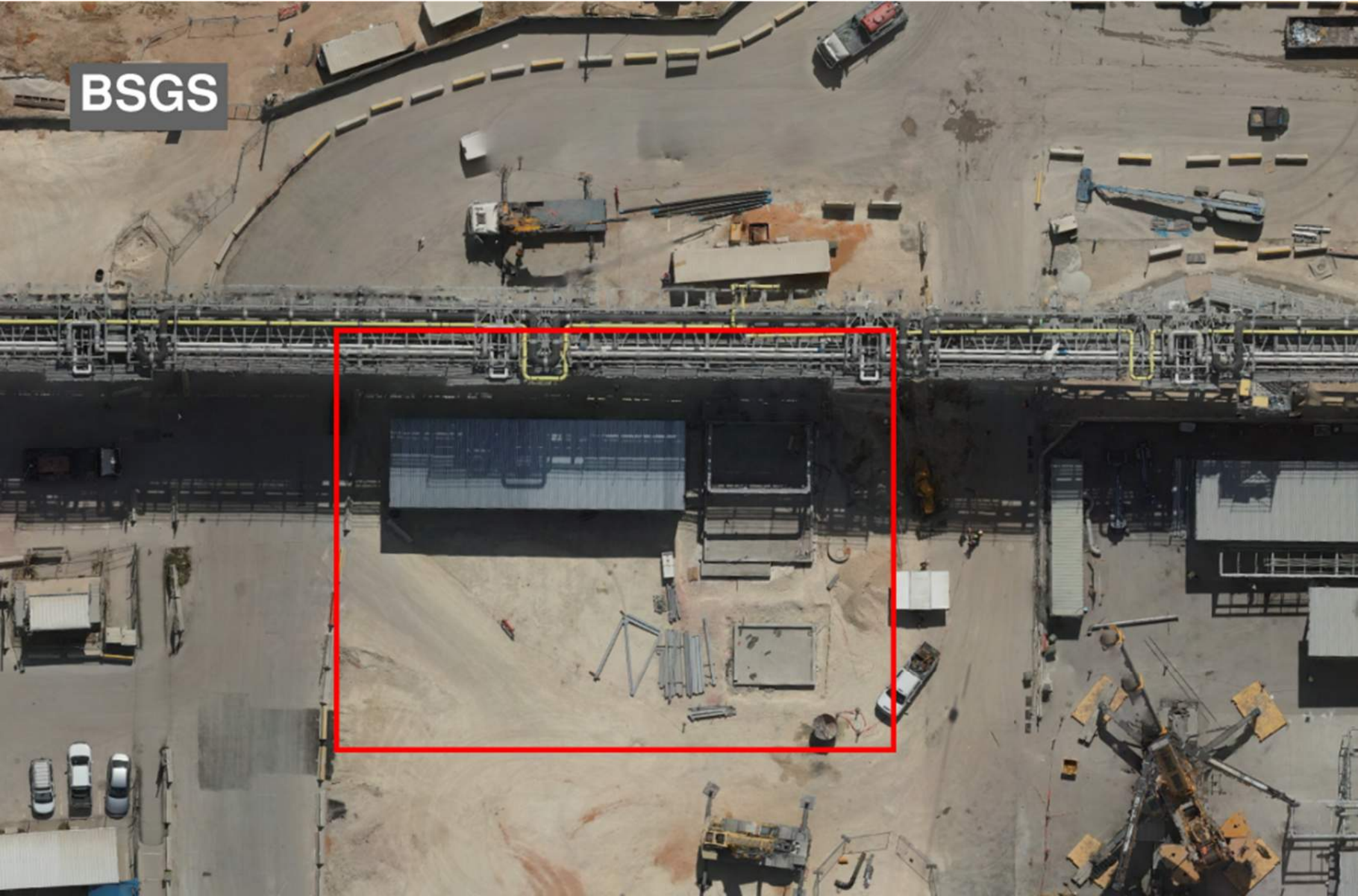


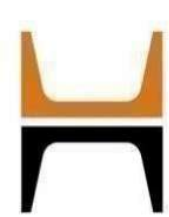
HOFFMAN CONSTRUCTION COMPANY



HOFFMAN
Sparrow  

BSGS





HOFFMAN CONSTRUCTION COMPANY



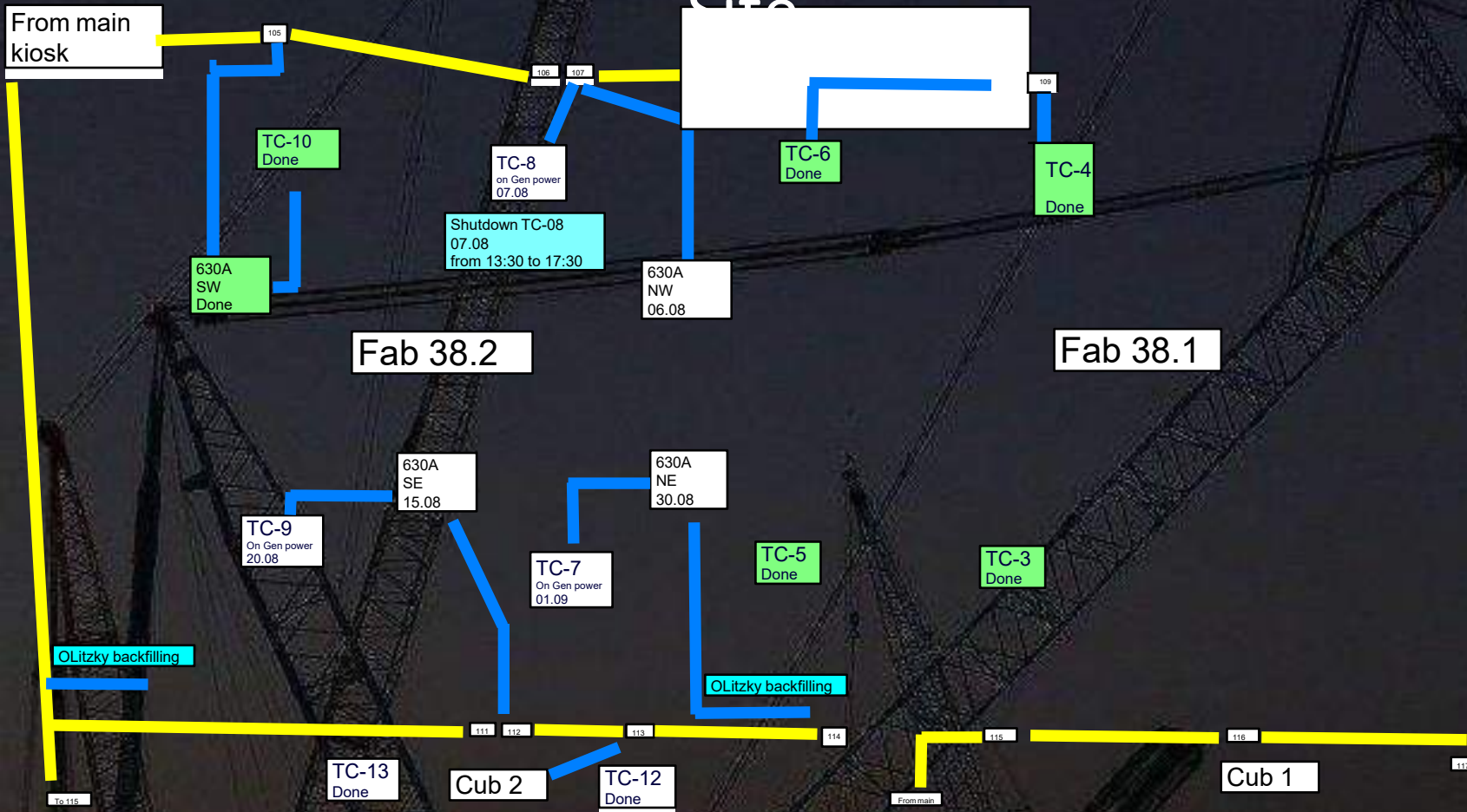
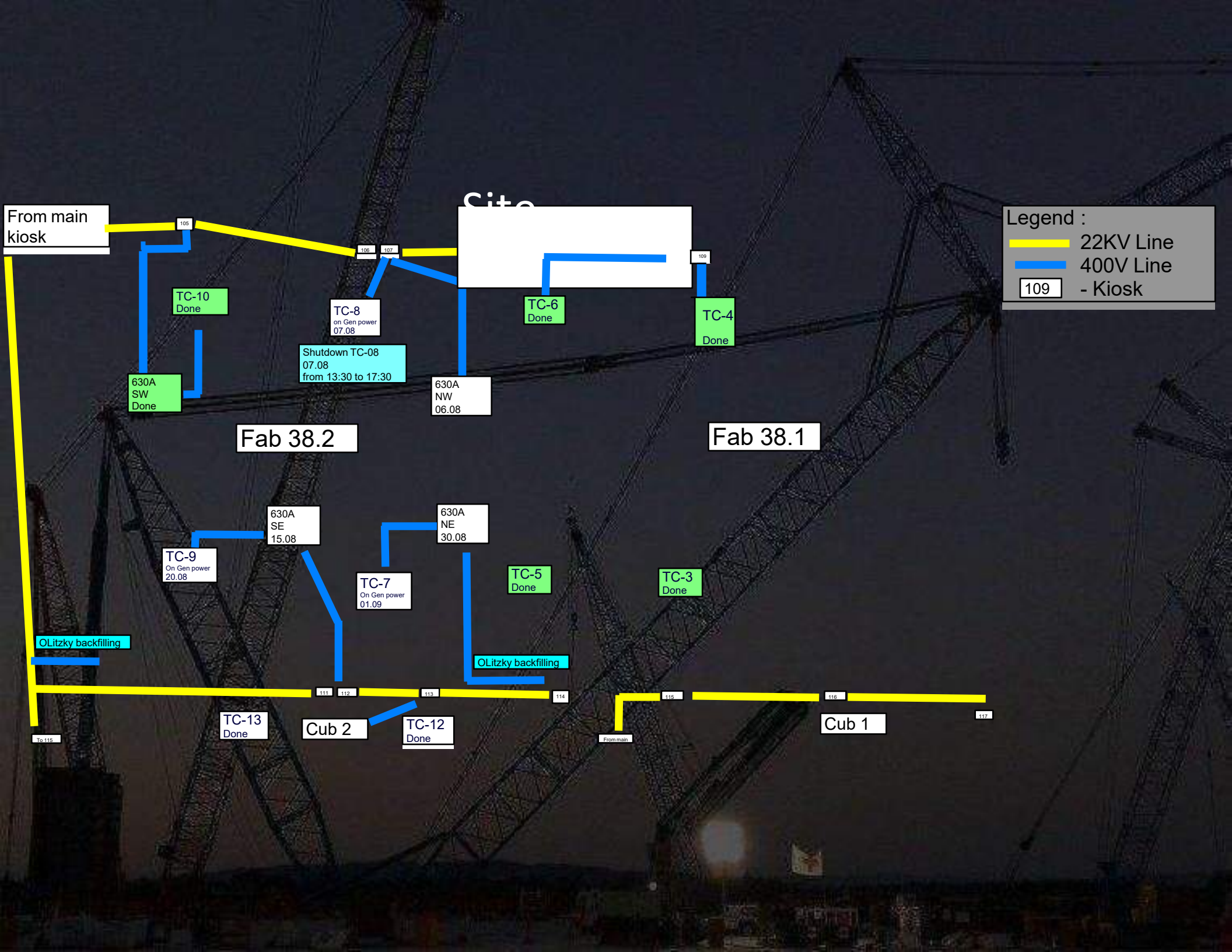
HOFFMAN
Sparrow  

NDT radiography test at BGC vacuum tanks area

Spoter

Spoter

**Wednesday night July 31st at
22:00
Finish on August 1st at 05:00am**



Legend :

- 22KV Line
- 400V Line
- 109 - Kiosk

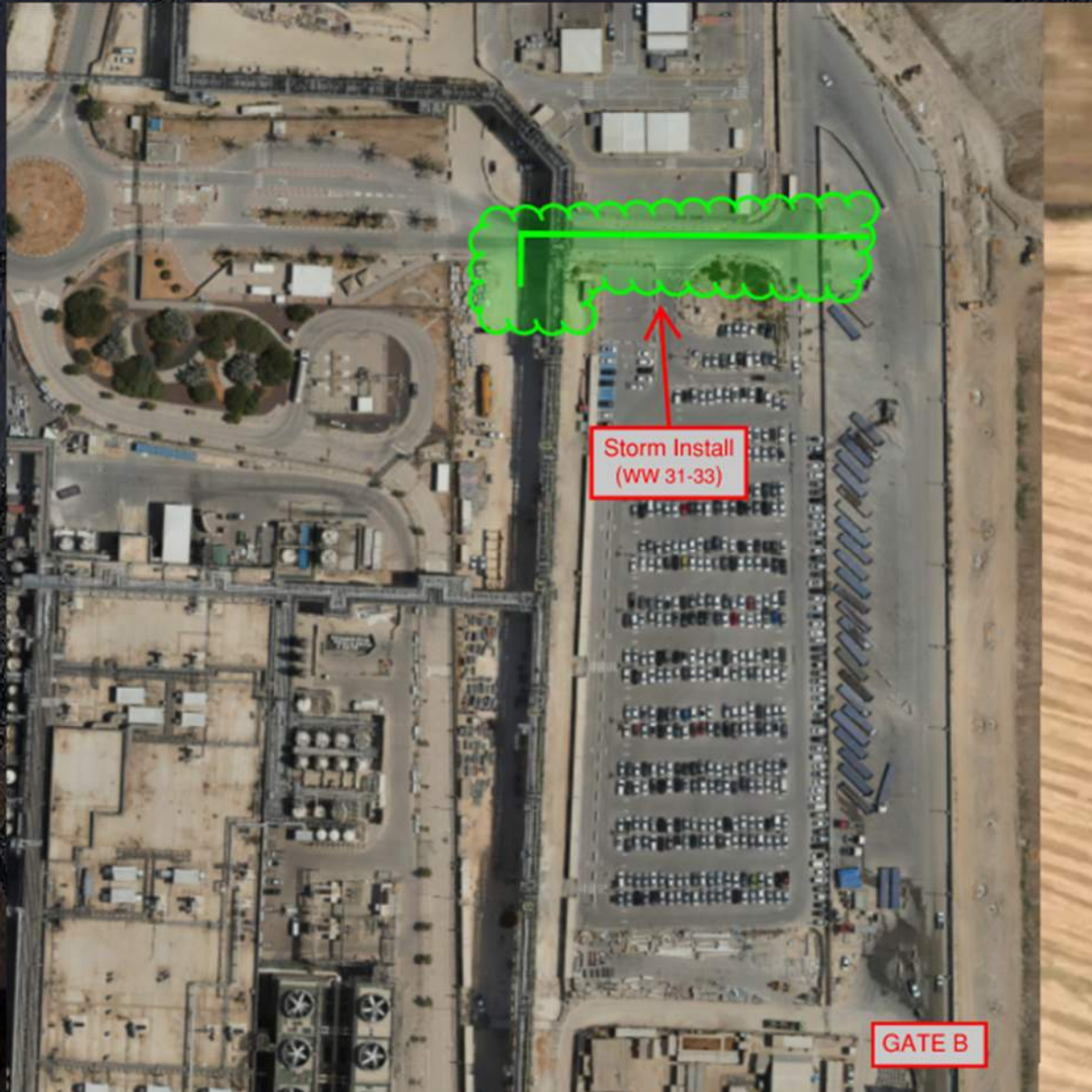


HOFFMAN CONSTRUCTION COMPANY



Daily Coordination Meeting

Site Logistics
North Gate B

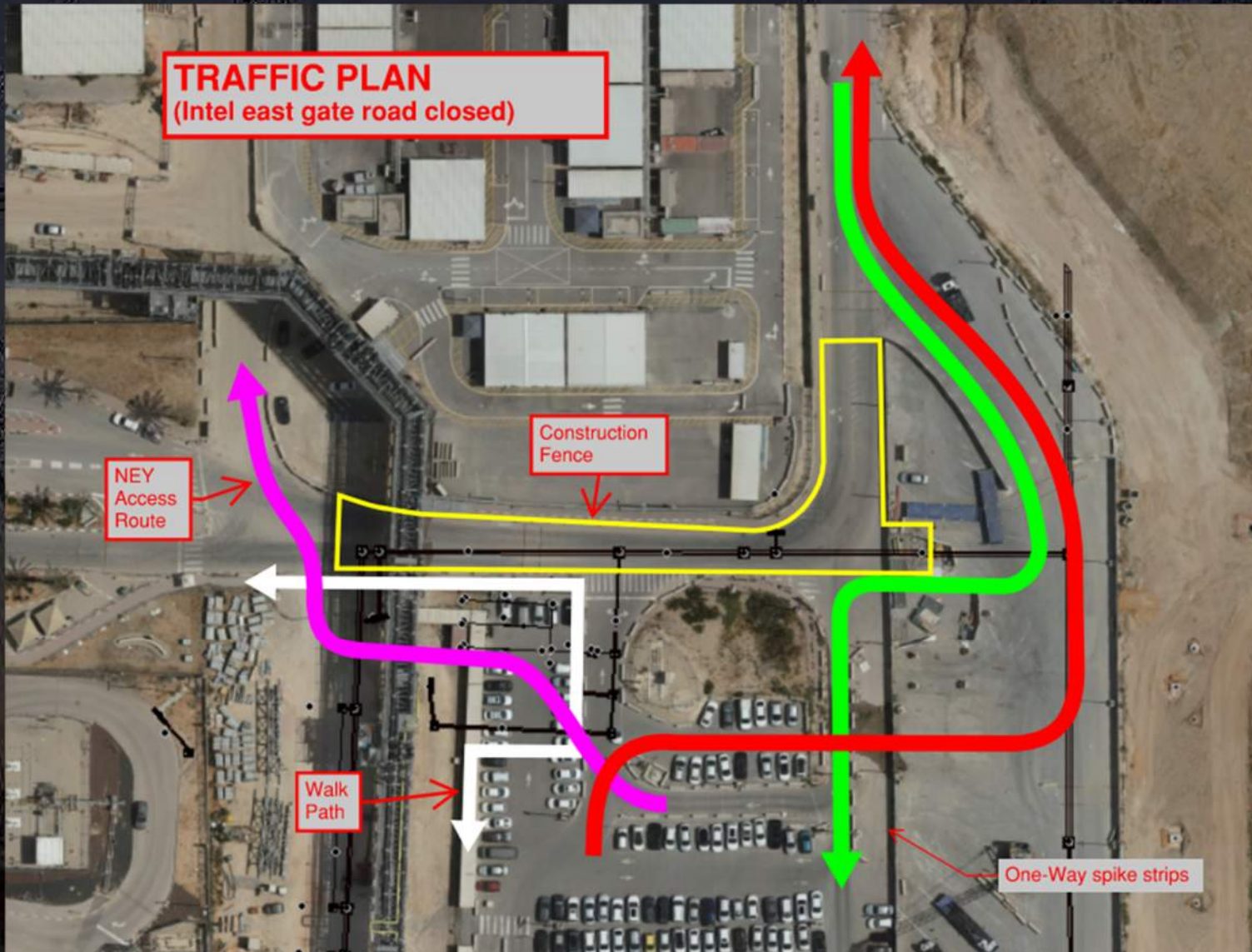




Daily Coordination Meeting

Site Logistics

Traffic Plan

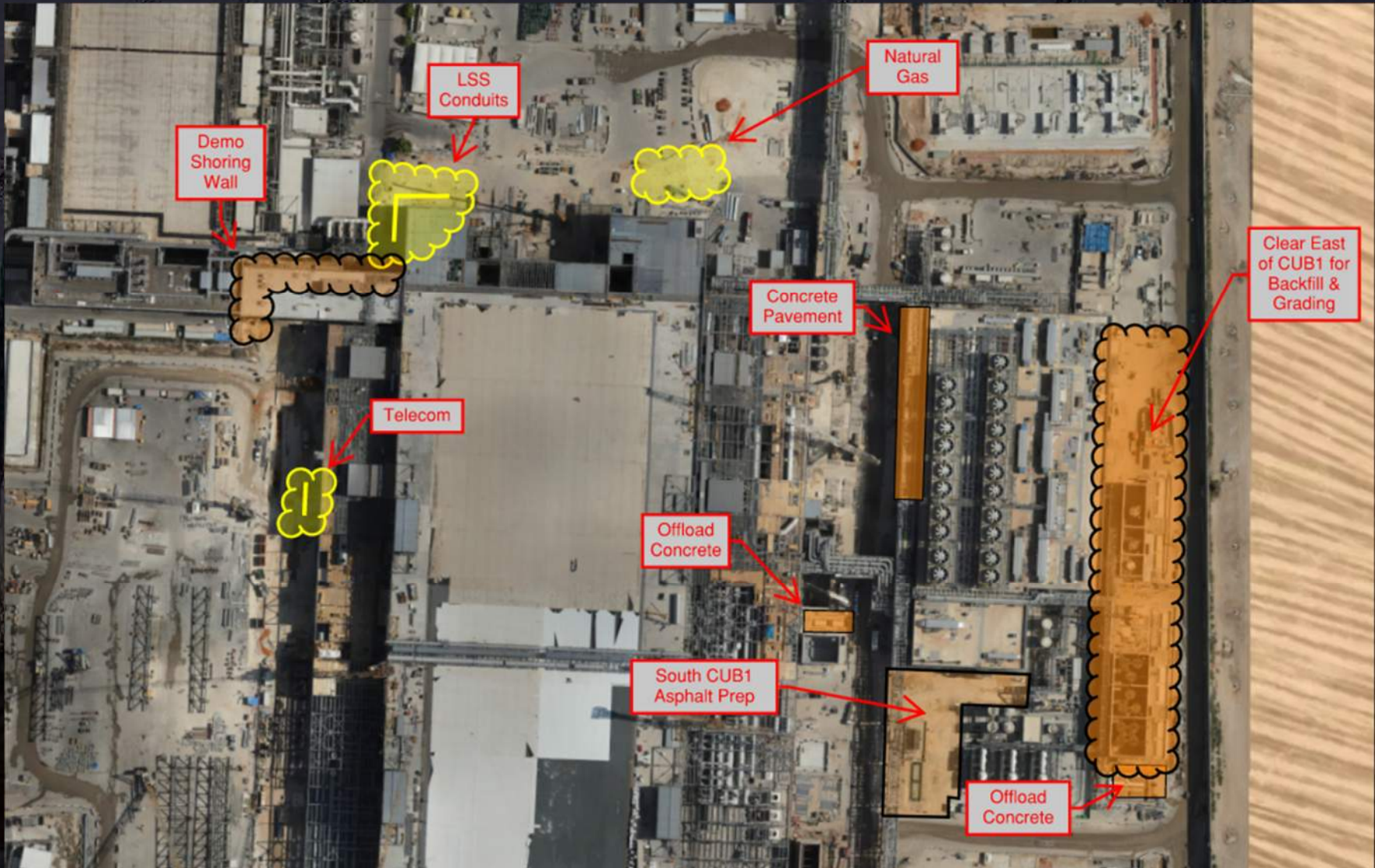




Daily Coordination Meeting

Site Logistics

North





Daily Coordination Meeting

Site Logistics

South





HOFFMAN CONSTRUCTION COMPANY

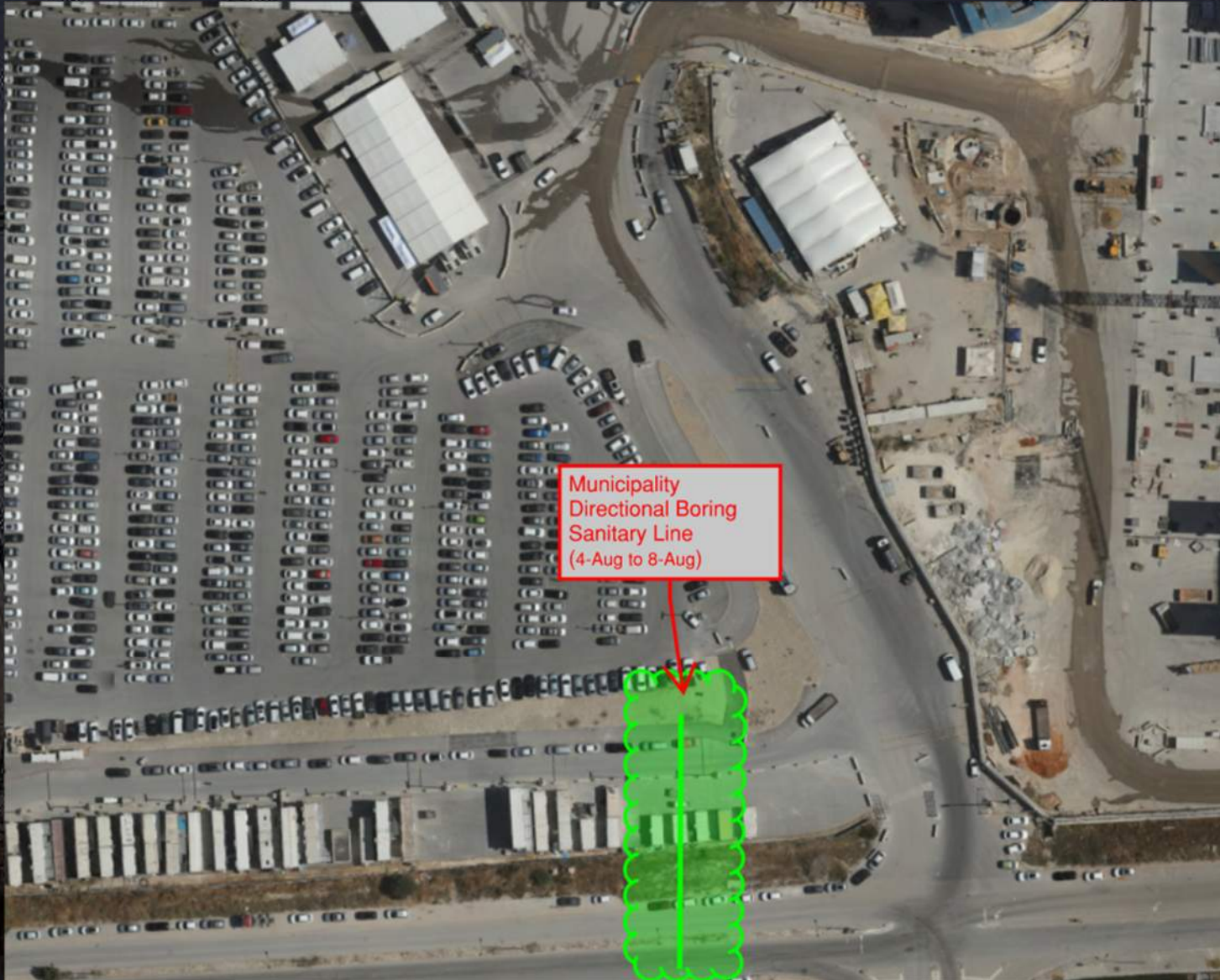


Daily Coordination Meeting

Site Logistics

SW Parking

Sanitary



Daily Coordination Meeting

Site Logistics

SW Parking





BF (1) AT GIS



BF BOTTLE FILLING LOCATIONS

CS PERSONNEL COOLING STATIONS

Commissioning

WW30

TCC Predicted: 105 (93 past due)

TCC Completed: **123**

Delta: **+18** (-75 total)

CCC Predicted: **51** (8 past due)

CCC Completed: **37**

Delta: **-14** (-22 total)

GT Predicted: **119** (24 past due)

GT Completed: **41**


Delta: **-78** (-102 total)


Mamad Guidance for Site


- In the event of a red alert siren, all persons need to calmly enter the nearest protected area.
- If there is not a protected area within 45 seconds, the guidelines recommend to enter a nearby. If there is no building nearby or you cannot reach the building or bomb shelter with the time available- lie down on the ground, face to the ground, and protect your head with your hands.
- You should not shelter in place near equipment, or structures that could harm you if they were damaged (scaffold and other temporary structures).
- Due to the potential for shrapnel to fall after a rocket has been intercepted by the iron dome- persons should shelter for 10 minutes after the alert has sounded.
- Please make sure that your crews are assessing the nearest protected area before they begin their work.


Heat Index- August 1st

	temperature (°F)																	
	80	82	84	86	88	90	92	94	96	98	100	102	104	106	108	110		
Relative Humidity (%)	40	80	81	83	85	88	91	94	97	100	103	106	109	114	119	124	130	136
	45	80	82	84	87	89	93	96	100	104	109	114	119	124	130	137		
	50	81	83	85	88	91	95	99	103	108	113	118	124	131	137			
	55	81	84	86	89	93	97	101	106	112	117	124	130	137				
	60	82	84	88	91	95	100	105	110	116	123	129	137					
	65	82	85	89	93	98	103	108	114	121	128	136						
	70	83	86	90	95	100	105	112	119	126	134							
	75	84	88	92	97	103	109	116	124	132								
	80	84	89	94	100	106	113	121	129									
	85	85	90	96	102	110	117	126	135									
	90	86	91	98	105	113	122	131										
	95	86	93	100	108	117	127											
100	87	95	103	112	121	132												

 Caution

 Extreme Caution

 Danger

 Extreme Danger

Extreme Caution Bordering on Danger

- Ensuring water and shaded areas available
- Acclimating workers
- Emergency planning and response
- Training workers and supervisors on the signs of heat stress and preventative measures
- Modified work schedules and/or rotating out workers
- Monitoring of workers for signs of heat stress
- Additional water breaks mandated. (Can be in work area)
- Increased rotation and monitoring of workers and area conditions.

Daily Coordination Meeting



14:00 Sign In

HCC/EHS Weekend Work- 26.07.2024

White Board Meeting in Beavers at 06:30

Superintendents

- Ethan Wolery 052-6041765
- Gilad Haziza 052-5984370

CSA CM

- Idan Dahan 052-5949702
- Nikol Loboda 052-3124965
- Andy Jollands 052-9659290

MEP

- Michael Ohehir 052-4168879
- Leslie Kelly 052-6391546
- Hillel Mashiah 052-6175084
- David Young 052-2241683

QA/Cx

Cranes

- Hadar Shem Tov 054-6693626

Safety

- Safety Foreman -Waseem Alhozil- 052-358-4978
- Safety Assistant- Husam Natasheh- 053-2478114
- Safety Professional – Anan Ragbe-058-7708886

Subcontractor Weekend Work- 26.07.2024

FAB

Utility Level

- Carmel raks
Foreman; Lucy 0506552488
Ehs; Michel 0542634700
- Combe upw
Foreman; Edward 0526419894
Ehs; Michael 0525506596
- Elram
Foreman: Shlomo 0545551702
Ehs: shy 0523632132
- Combe waste
Foreman: Denis 0525238504
Ehs: Michael 0525506596
- Chemo
Ehs lilach 0547886704
Foreman sergey 0544659688
- Carmel duct
- Afcon electrical
- HYG

Clean Room

Subfab

- Carmel Bidud – AA scaffold removal
Ibrahim – 052-951-9833
- Afcon E – SF LSS Rooms. Avieli – 052-600-8487
- WW – Elev. Shaft 1

PSSS

- Pach Taas – Module bolting PSSS Roof and Lift 2
Foreman – Vadim – 052-6229005
Safety – Offek – 050-7838486
- W&W – SEQ 131,134,136, and 2P Scrubber Grating
Foreman – Willie – 052-6145521
Safety – Gary Lambert – 1-405-833-8910
- Katz – U8 Rack 7 Plate Install
Foreman - Polishchuk - 054-750-1845.
Safety – Ofer Ilisar - 054-675-6690
- Katz Piping – UPW Room
Foreman – Konstantin Tsib – 054-7861613
Safety – Ofer Ilisar - 054-675-6690
- Afcon Electrical – Cable Tray and Cable Pulling 1-4P UL and 1-2P Roof & Lift 2
Foreman – Charles – 055-2740190
Safety – Stevan – 055-9129333
- Combe UPW – UPW Room, UPW Yard, and Water Reactive Piping
Foreman – Eduard – 052-6419894
Safety – Michael – 052-6419894
- Chemo A. – PSSS Roof and Lift 2
Foreman – Maor – 050-955-9071
Safety – Rotem – 054-447-7112
- HSAI – BIPA & MOD2 Stripping
Foreman – Dave – 052-4121028
Safety – Sam – 052-5259268
- Carmel Bidud – 5P/U8 Rack 7 Ductwork & Roof Ductwork
Foreman – Hitim – 052-7053353
Safety – Michael – 054-2634700

Girts

Subcontractor Weekend Work- 26.07.2024

WJG

- Afcon
- W&W
- Pach Taas
- Chemo Aharon

Site

- **Derech Afar** – Sanitary lift station & sanitary underground install
Supervision = Raed: 054-2442030
EHS = Alex: 054-5403849
- **Olizki** – Sweepers and water trucks, truck offloads, concrete flatwork (PCC) & excavation
Supervision = Yossi: 052-2180485
EHS = Ben: 052-4033565

Trestle

- SN- Piping

CUB

- H.s.a.i
- Chemo
- Saminajami cub 2

GIS/NEY

TMT: •

Zone 8 Welding of fire fighting piping with the help of a crane

Zone 7+8+warehouse general cleaning and hot work in favor of a concrete floor 1*1

Manager - Ido Deus 050-866262