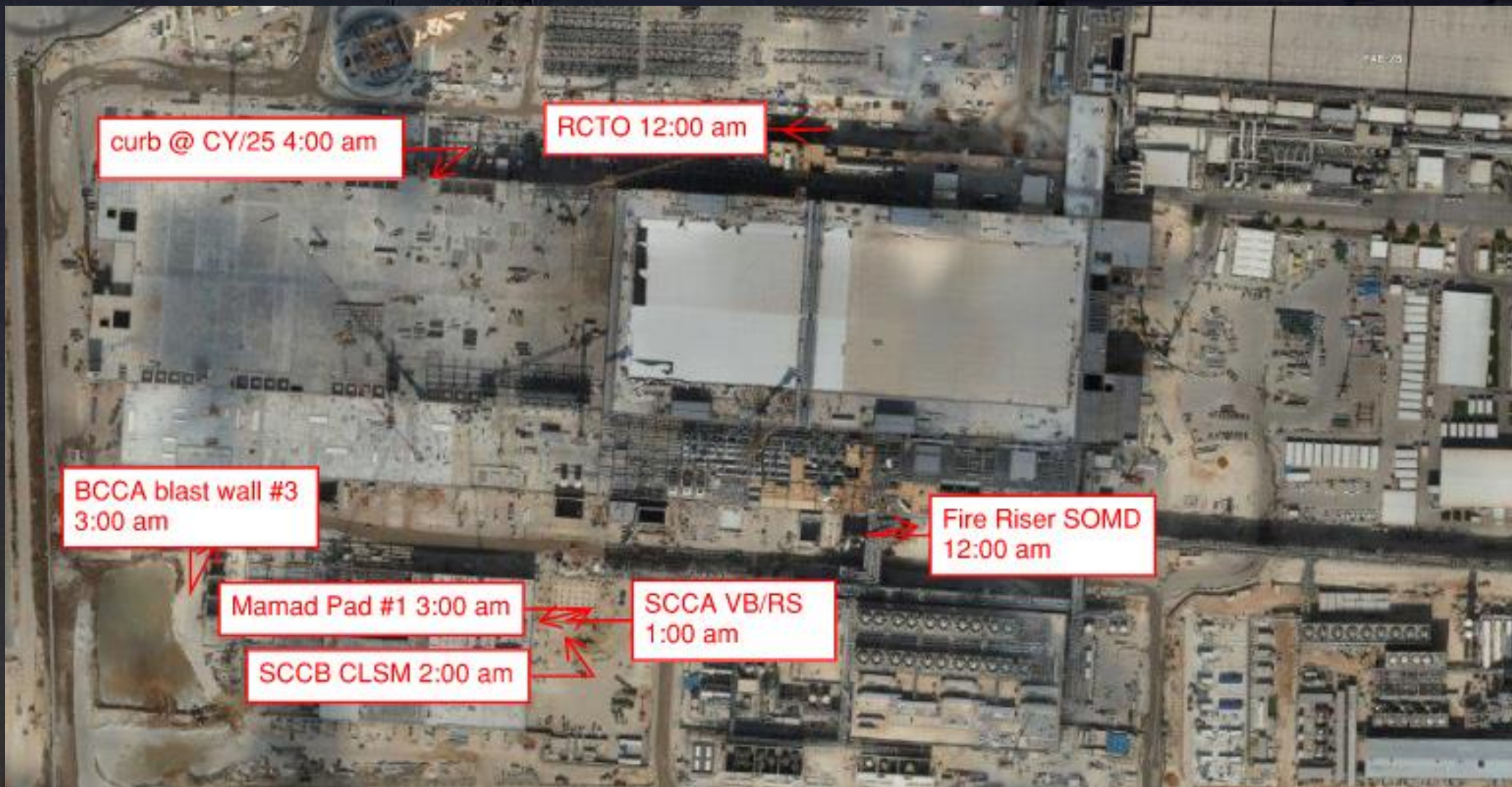


Daily Coordination Meeting

General Topics:

- Vehicle passes- changing next week





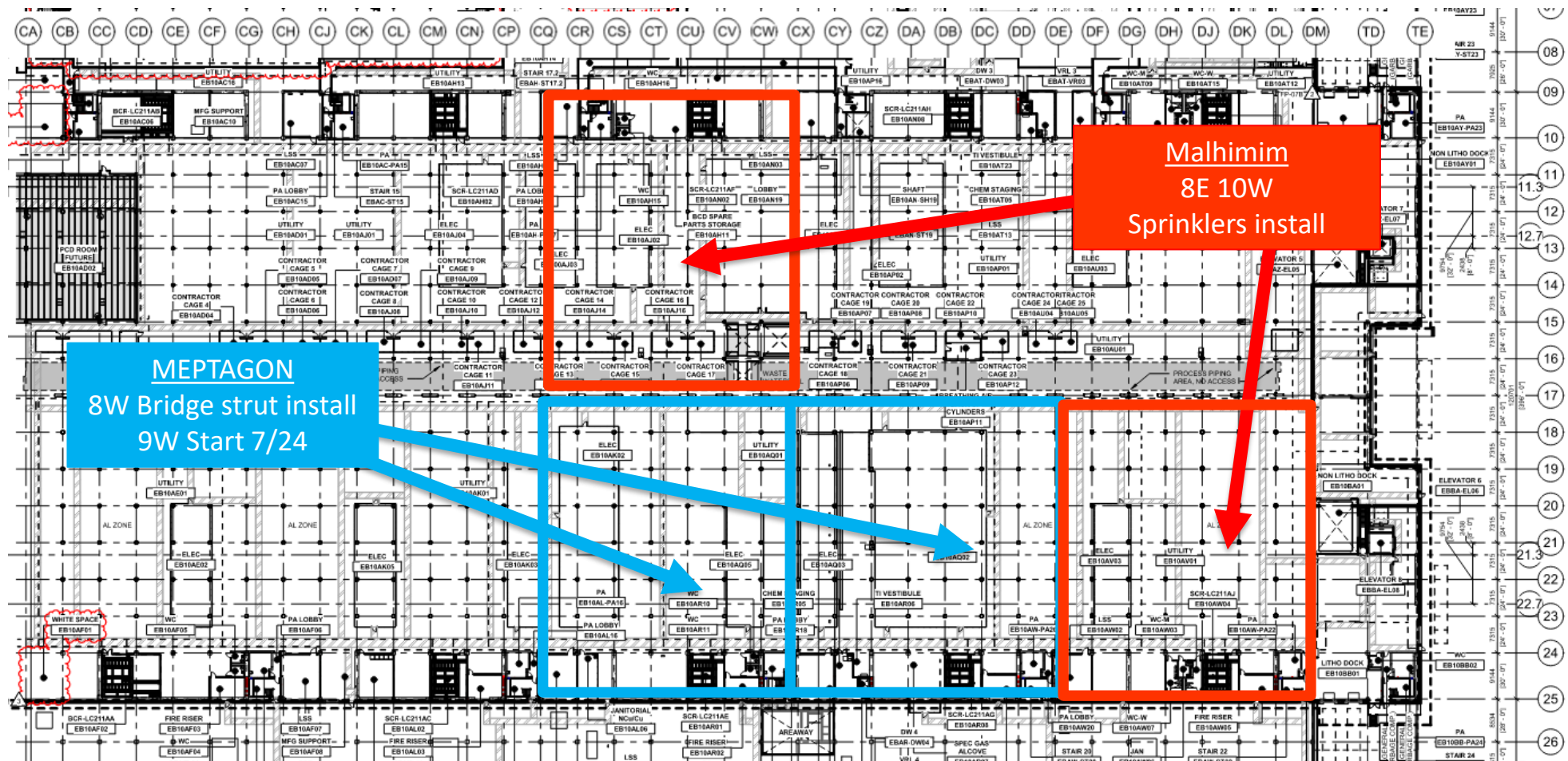


ELRAM PCD Bathtub walls!

Belfor
Mold
remediation
ongoing at
ttnw and ttnw

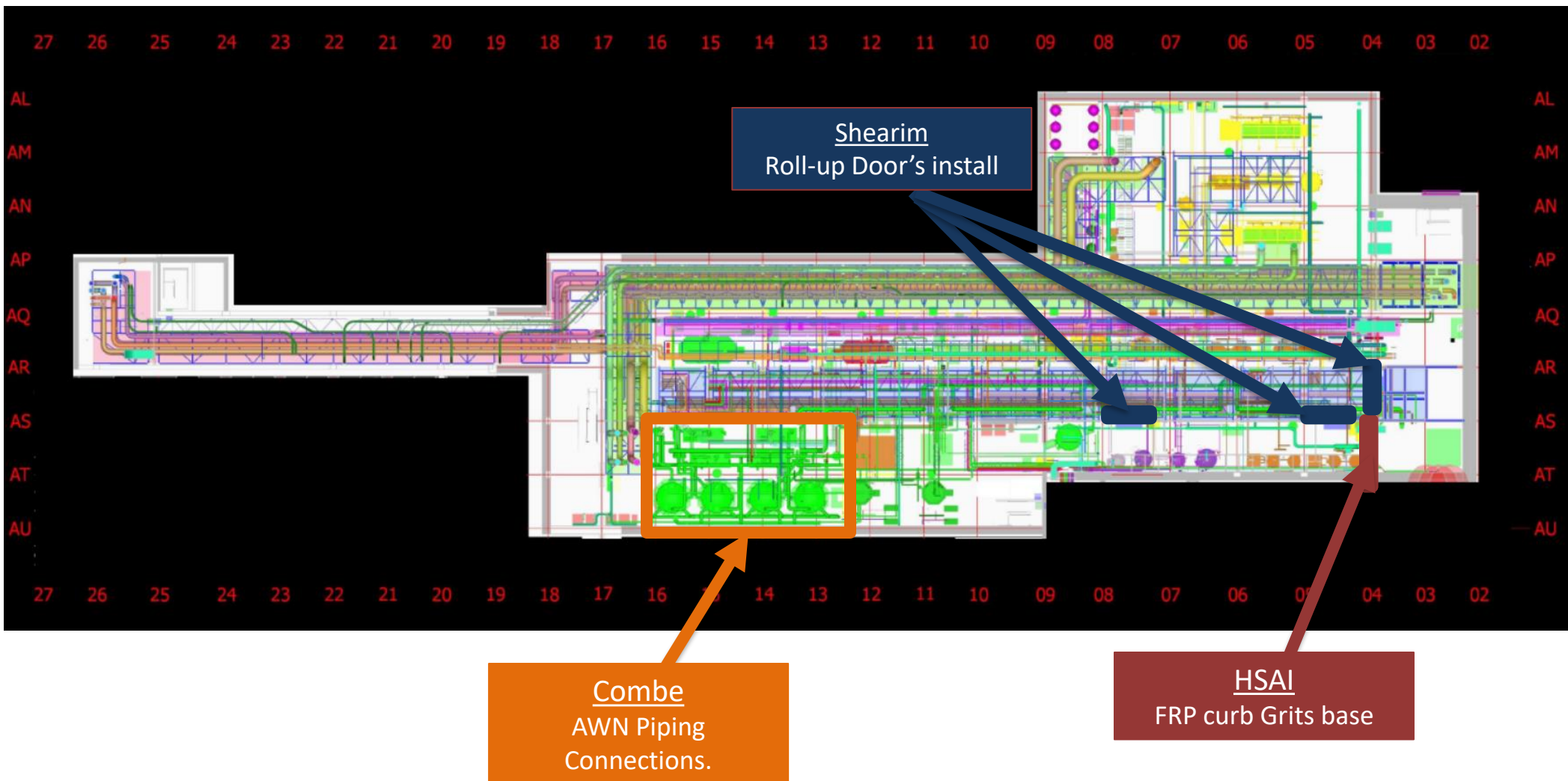
HYG + HSI
Stairs 32
Waiting for Tech sol
from HSI

UTILITY LEVEL MOD2





SUT 38.1 LEVEL

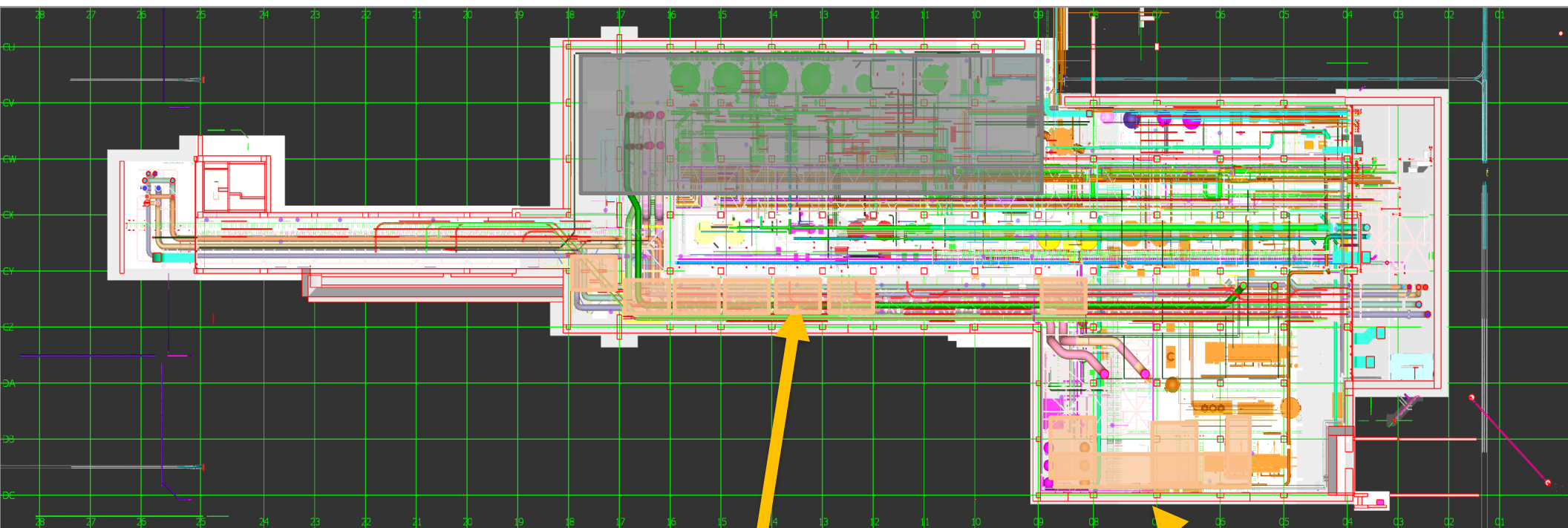




HOFFMAN CONSTRUCTION COMPANY



SUT 38.2 LEVEL



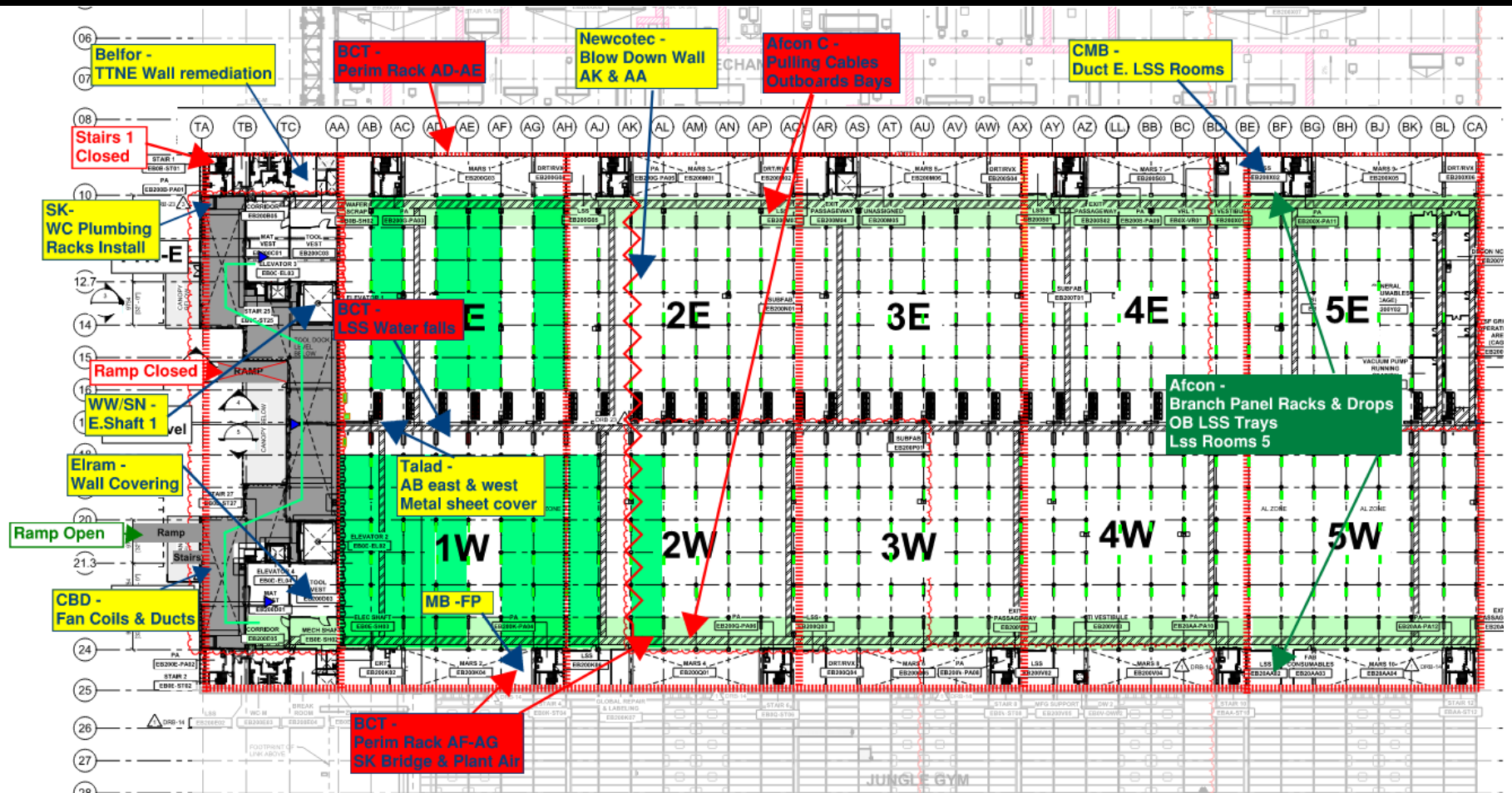
SKE
H&T
CRW
Move-In date ?

Vesda
H&T

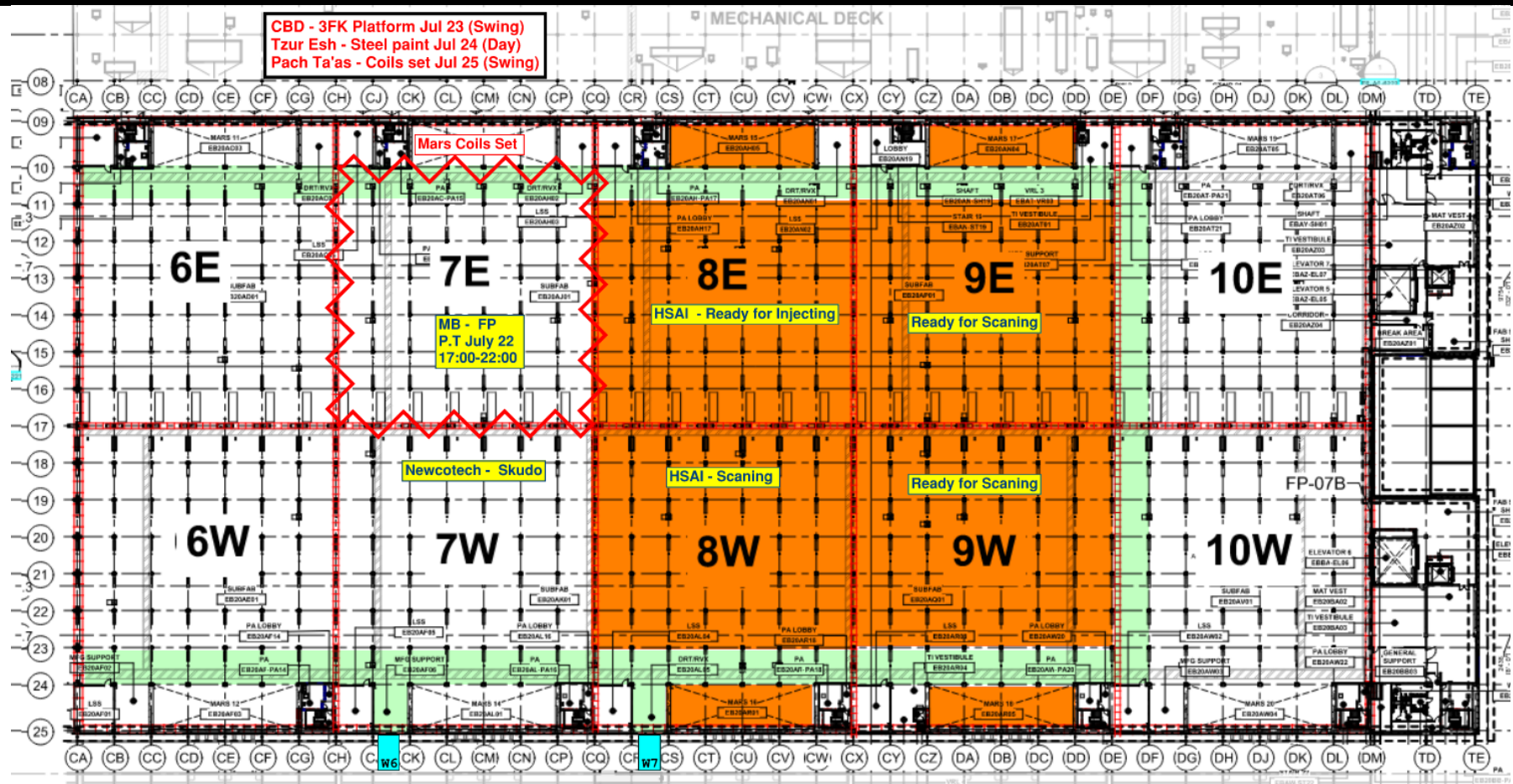
1A Rack
Lifting

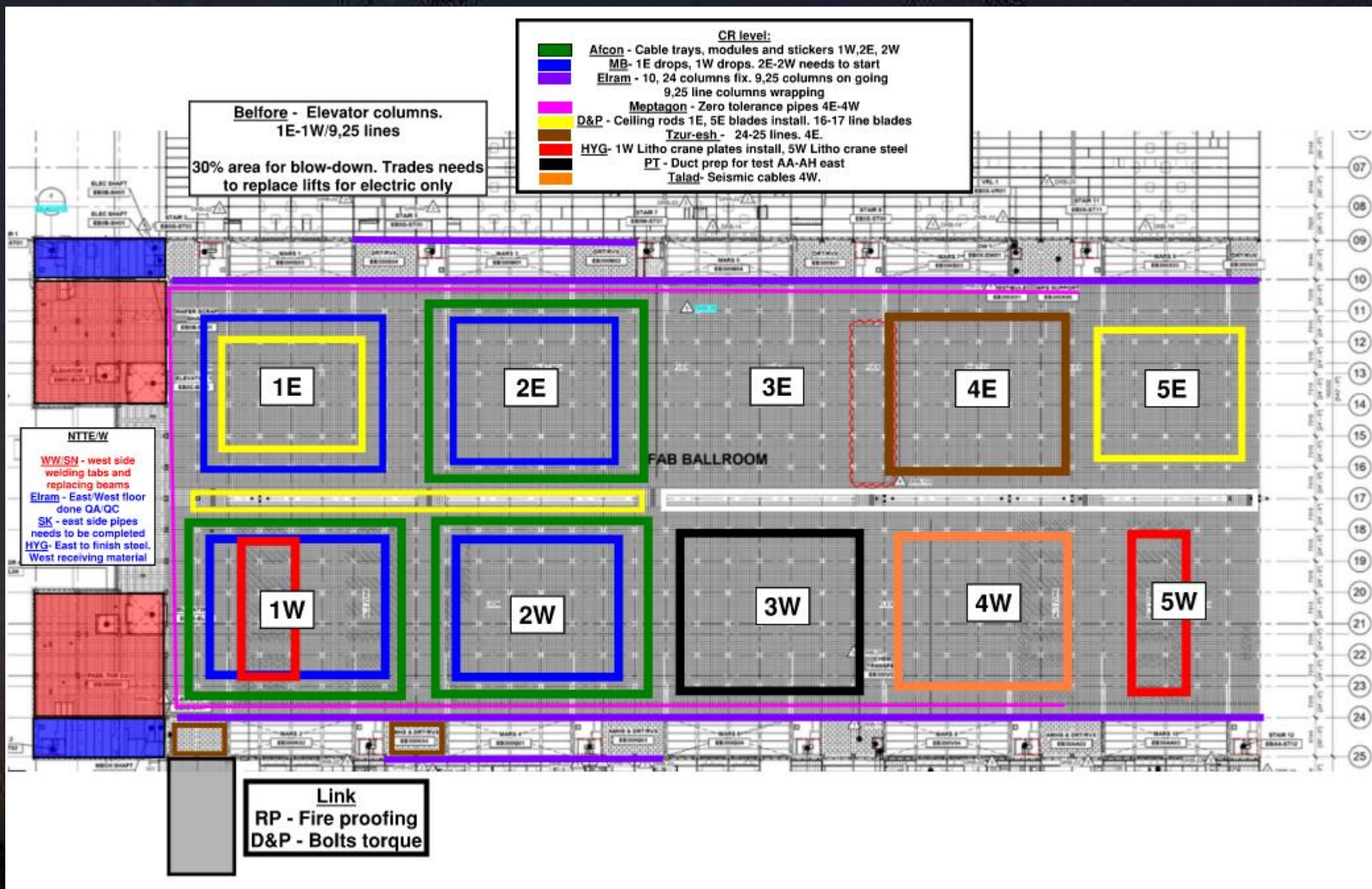
8 Rack
5/3pices

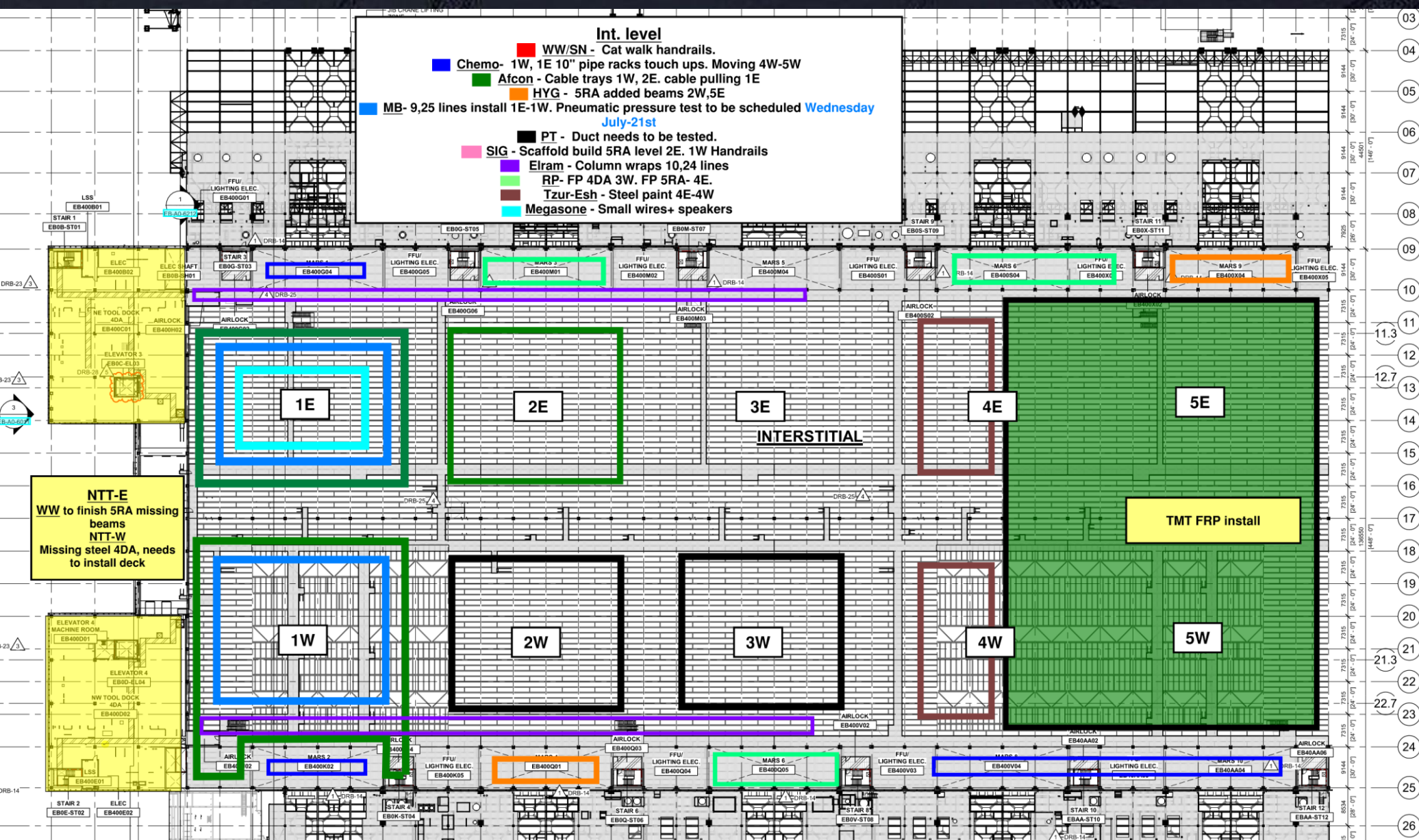
SUBFAB BUILDOUT MOD 1

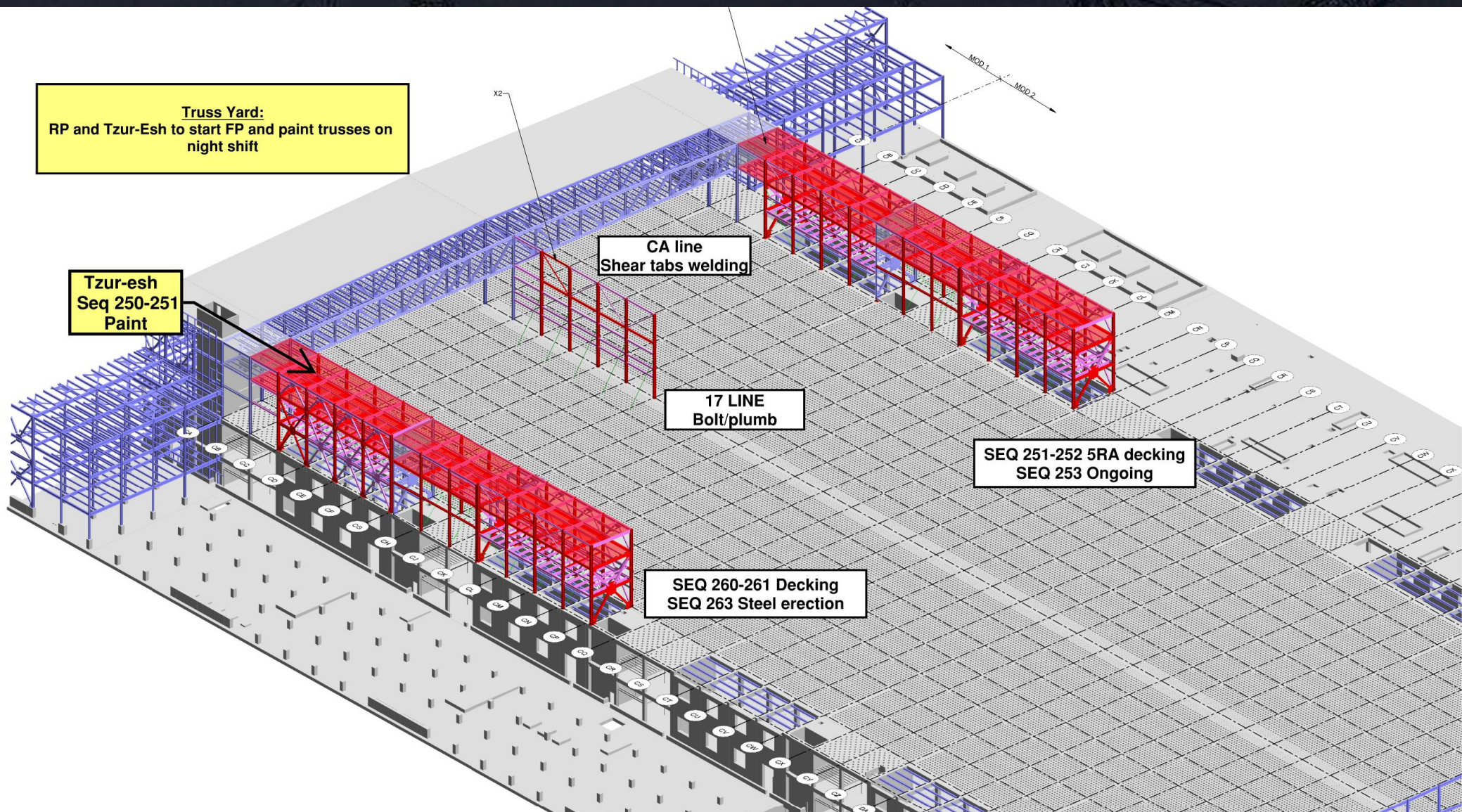
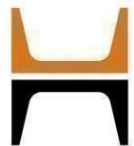


SUBFAB BUILDOUT MOD 2









Truss Yard:
RP and Tzur-Esh to start FP and paint trusses on night shift

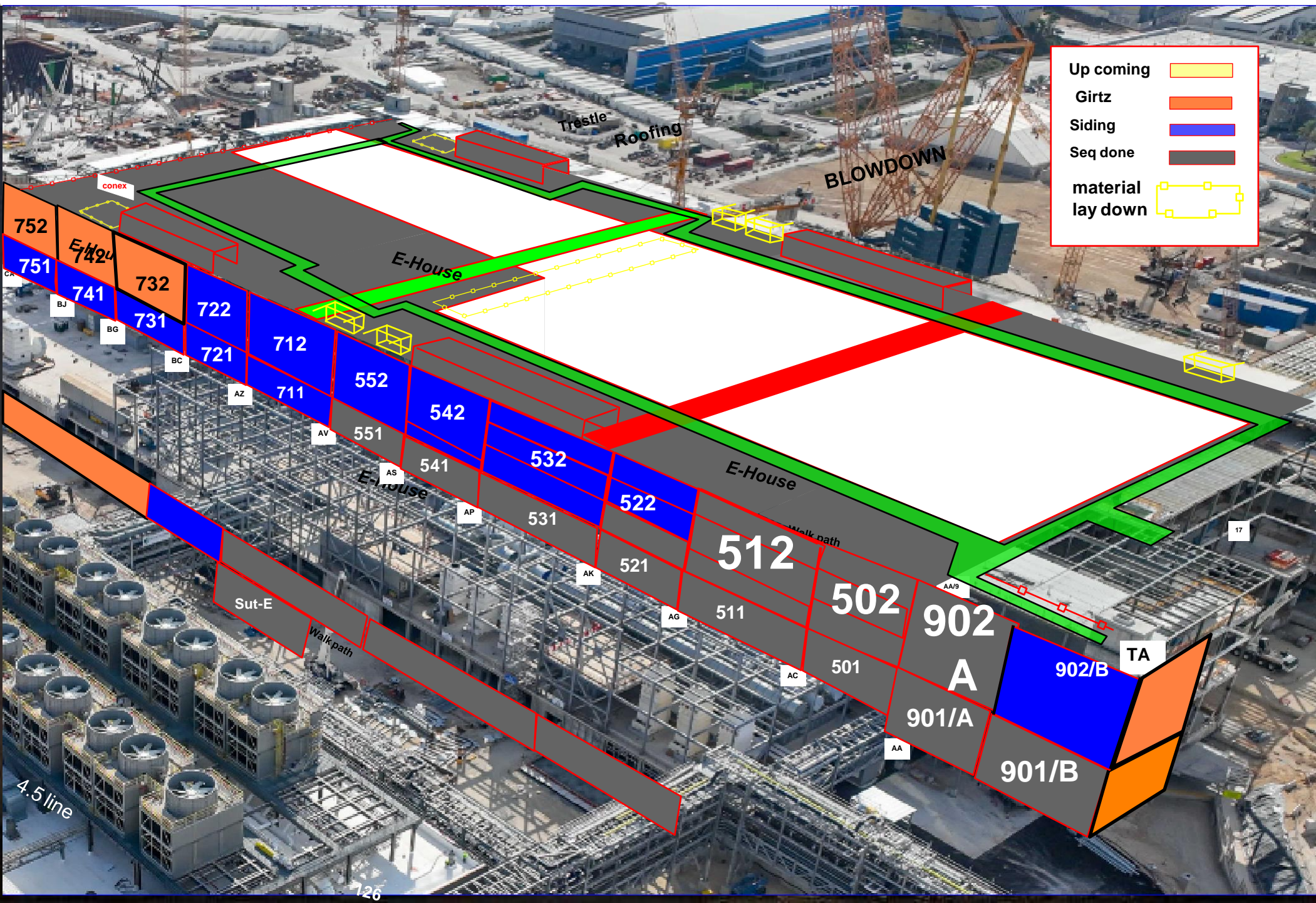
Tzur-esh
Seq 250-251
Paint

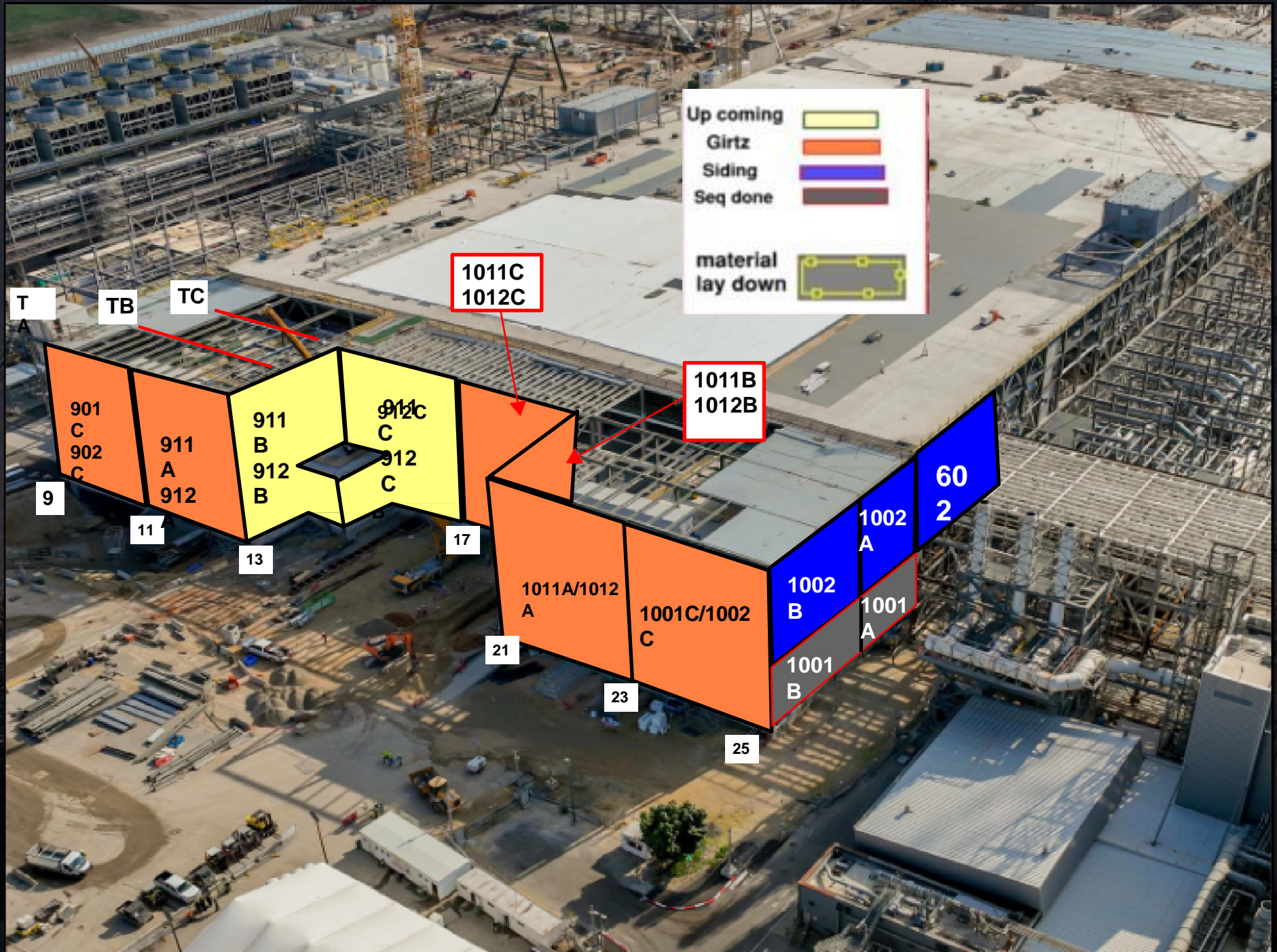
CA line
Shear tabs welding

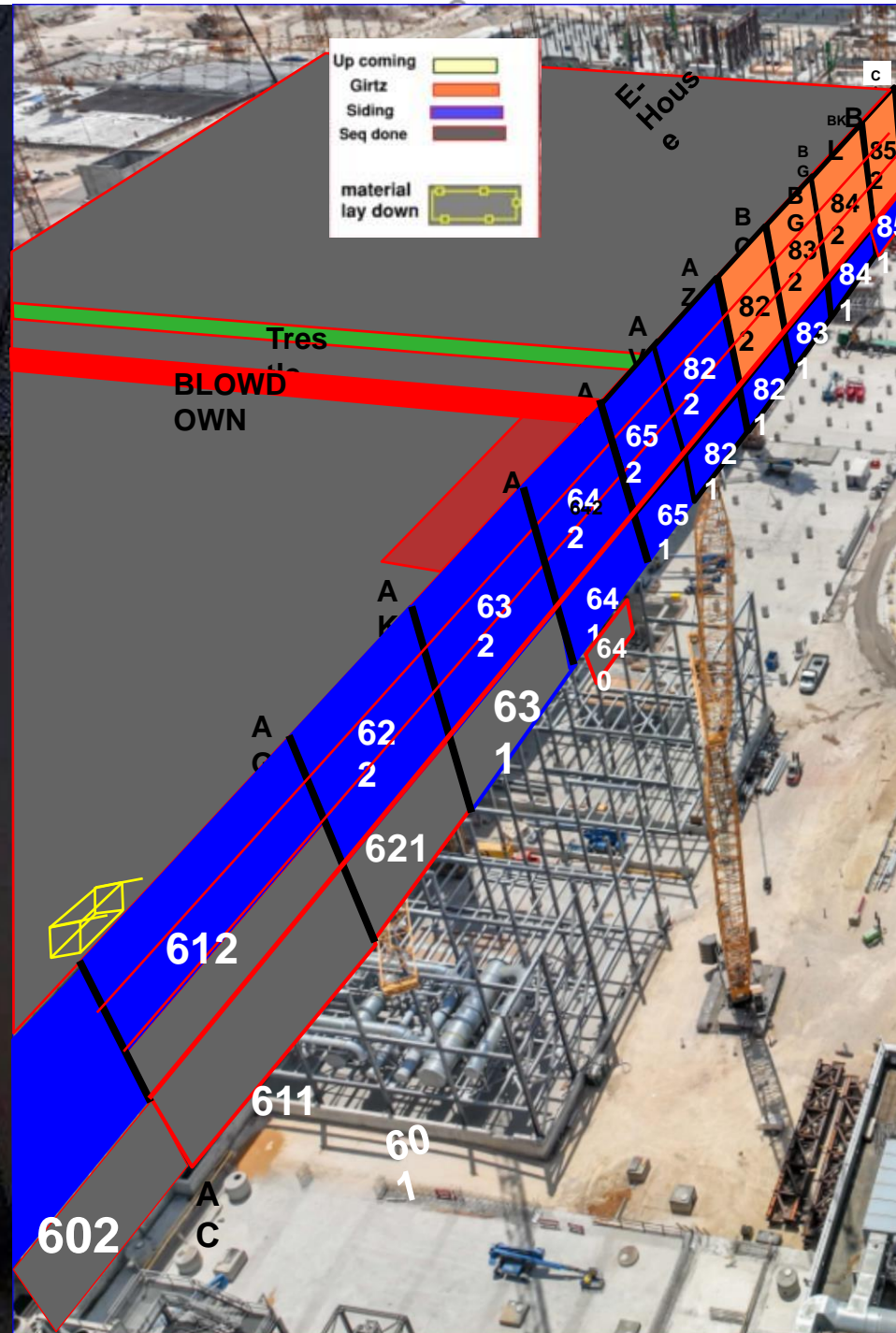
17 LINE
Bolt/plumb

SEQ 251-252 5RA decking
SEQ 253 Ongoing

SEQ 260-261 Decking
SEQ 263 Steel erection



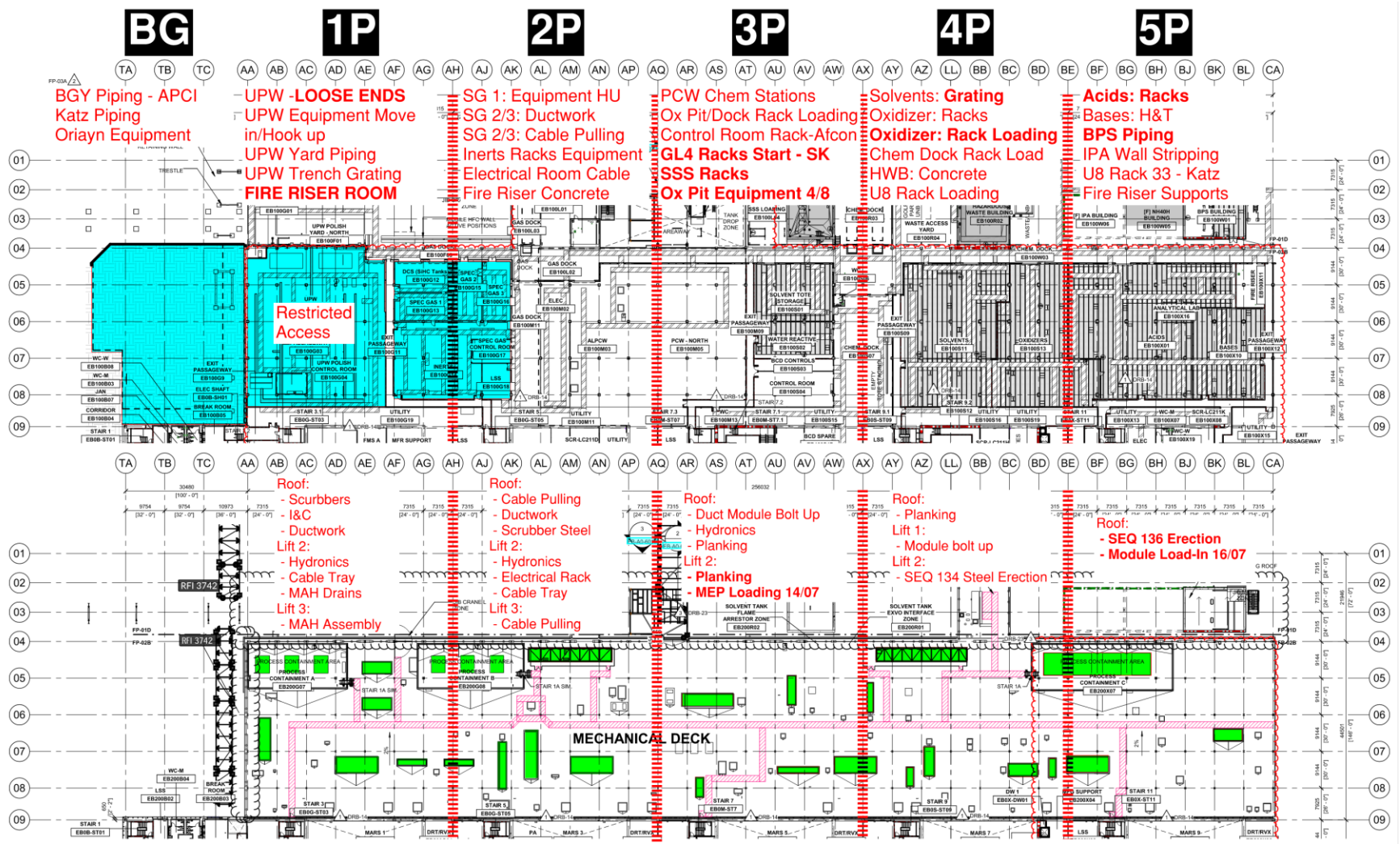




PSSS.1

Utility Level
1YA

PSSS Roof
2SA

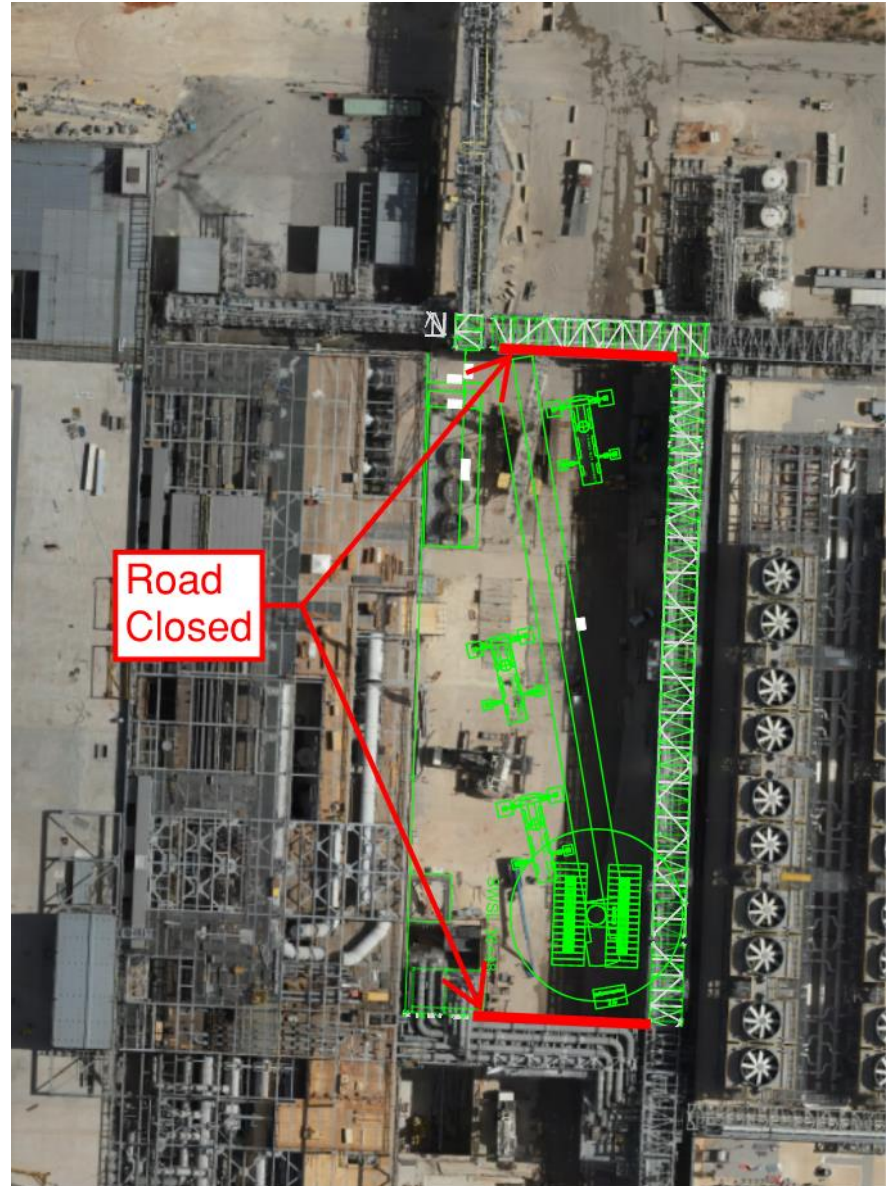


PSSS.2

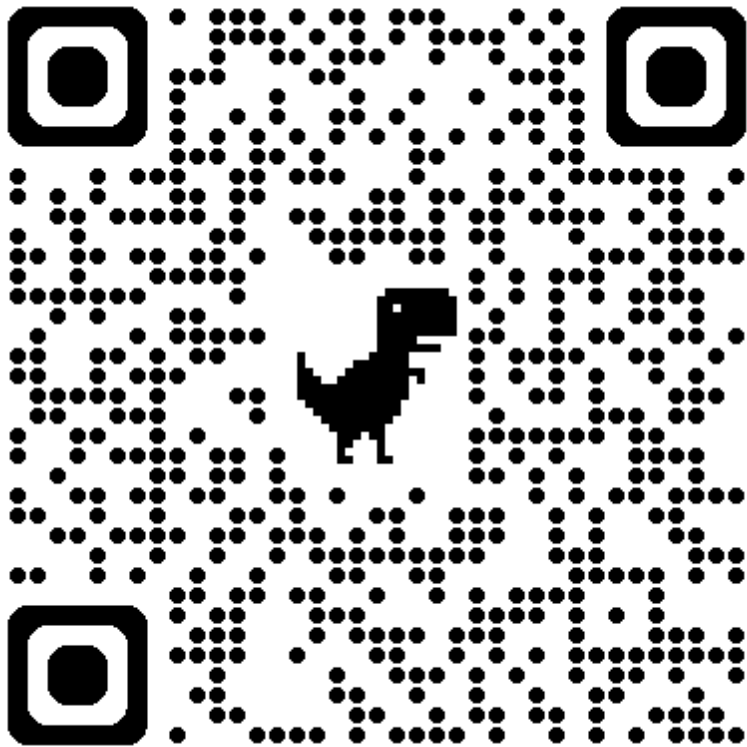


PSSS DMAG DISMANTLE

- July 21st-25th
 - UPW MIMO CLOSED
 - GAS MIMO CLOSED
 - GUT ROAD BLOCKED FROM TRESTLE BRIDGE TO TRESTLE BRIDGE



EJG/WJG Grating/Planking Penetrations



JG Grating/Planking Penetrations

Type of Penetration *
What side of the building is the penetration located?

Location of Penetration *
Provide gridlines of where the penetration is needed

Zone of Penetration *
What zone is the penetration

Lift of Penetration *
What lift of Steel is the penetration

Gridlines of Penetration *
Input the gridlines of where the penetration is located

Size of Penetration *
Put size of penetration required in mm

Contact Company *

Contact Number *
Contact number in the case of questions

Contact Email *
Email of person to get notifications on penetration

Layout Confirmation *
Confirmation that layout has been confirmed by requesting contractor. If layout is incorrect, the requesting contractor will be responsible for all fixes, build backs, replacement, etc. cost associated with the incorrect layout.
☐

Photo of Layout in the field *
Upload a photo of the layout once complete

Drag and drop files here or [browse files](#)

☐ Send me a copy of my responses



WJG 01J, 02J LIFT 2 & 3



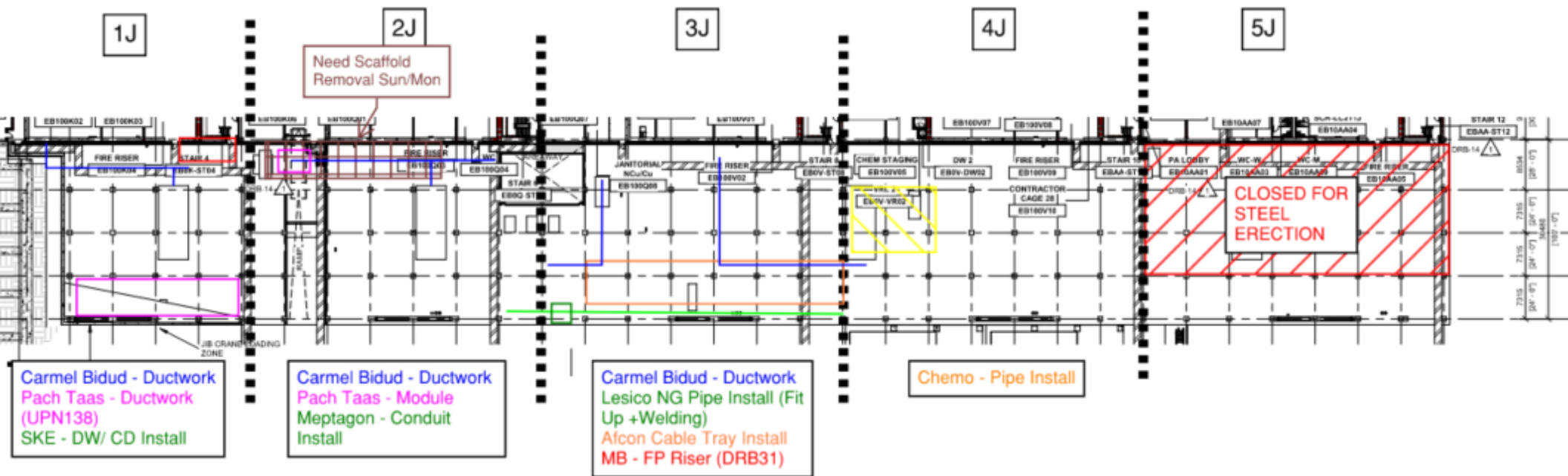


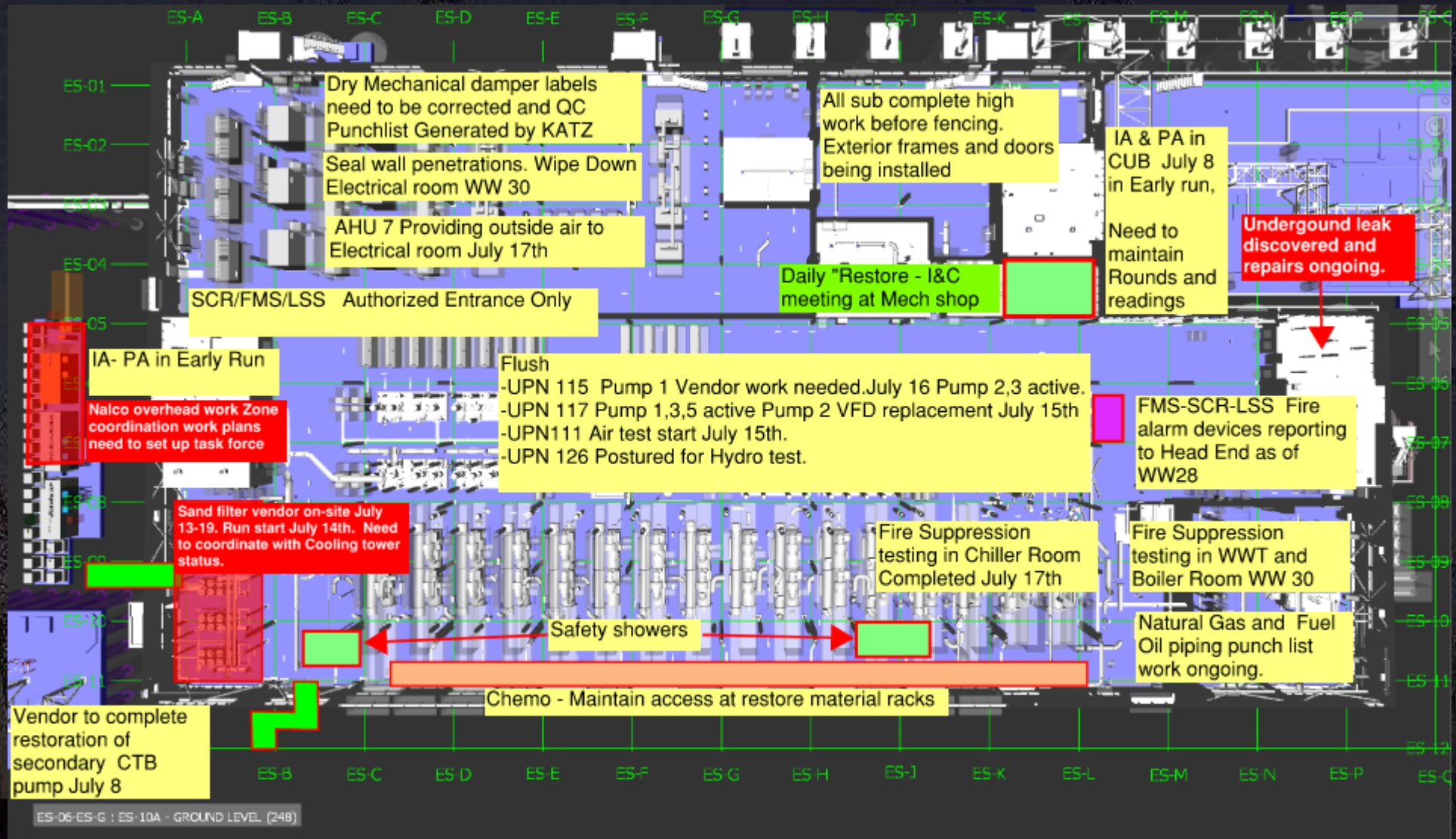
WJG 03J, 04J, 05J LIFT 2 & 3

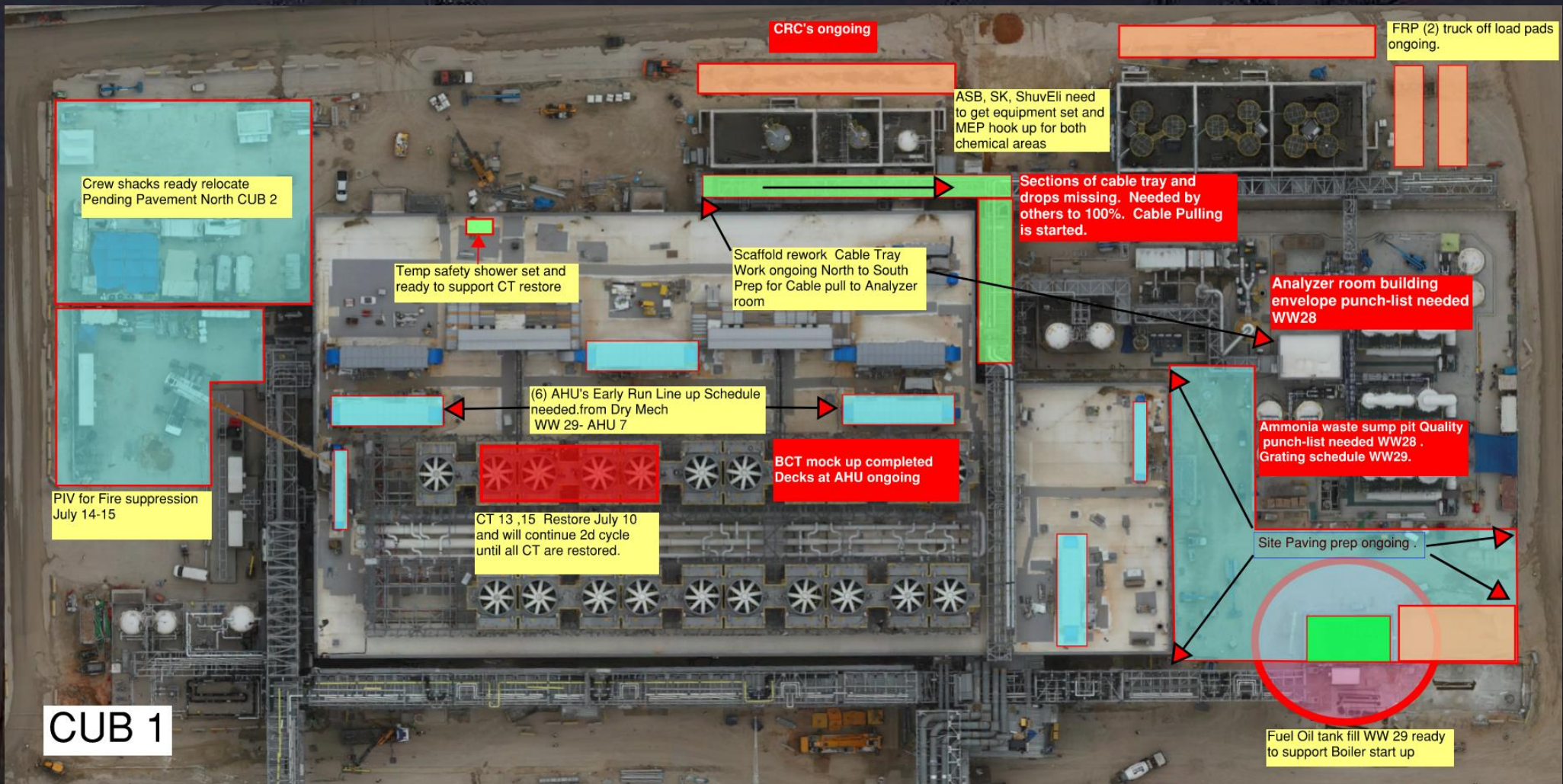


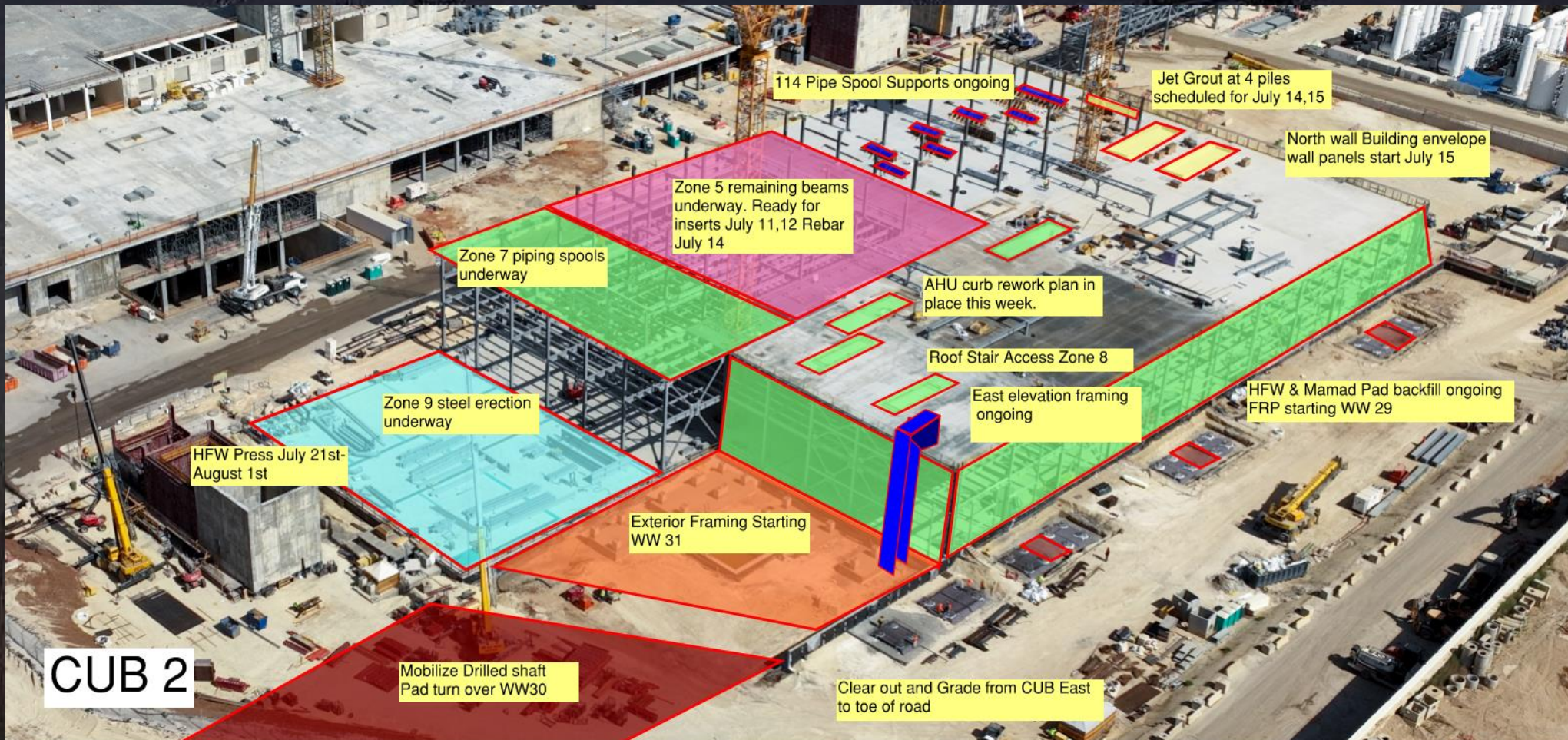


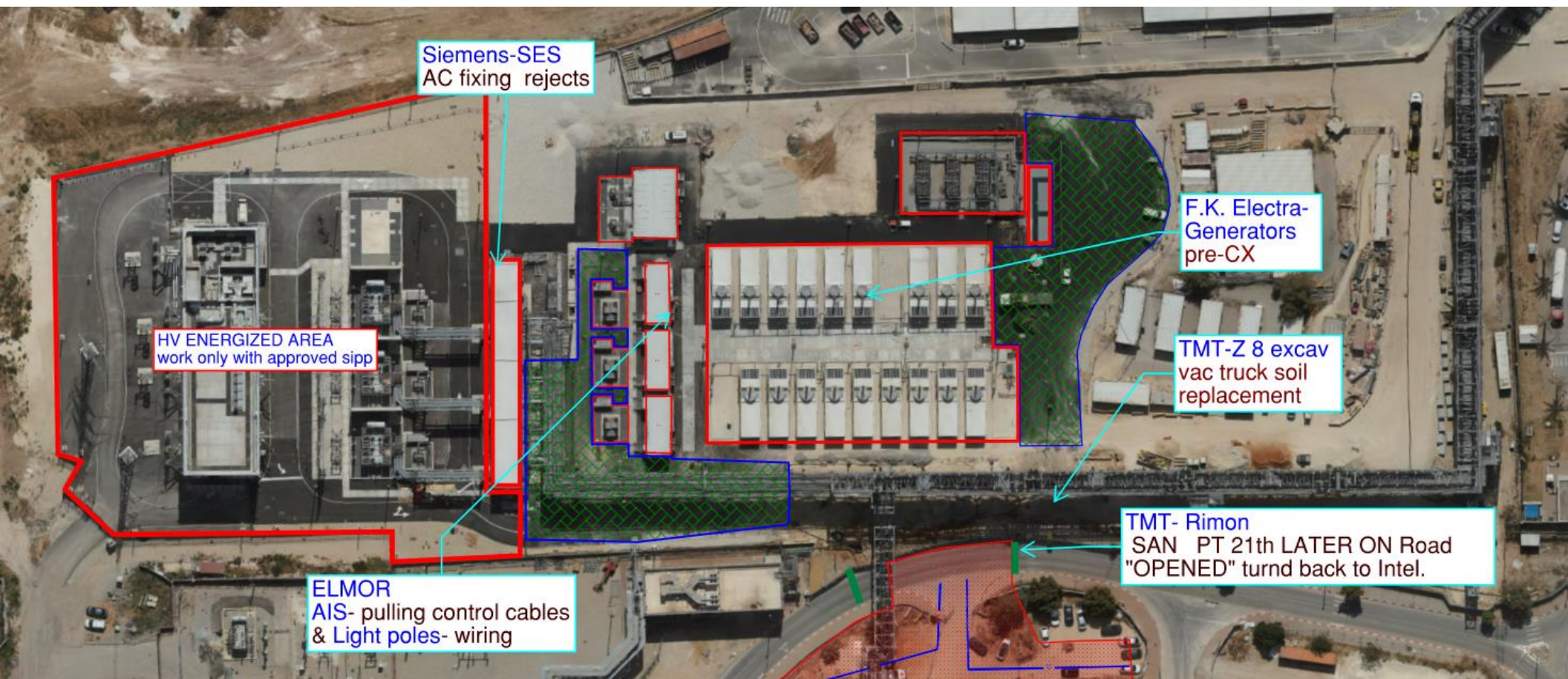
WJG UTILITY LEVEL BUILD OUT











Trench lids will be instal 5/9/24
complete your sow before.

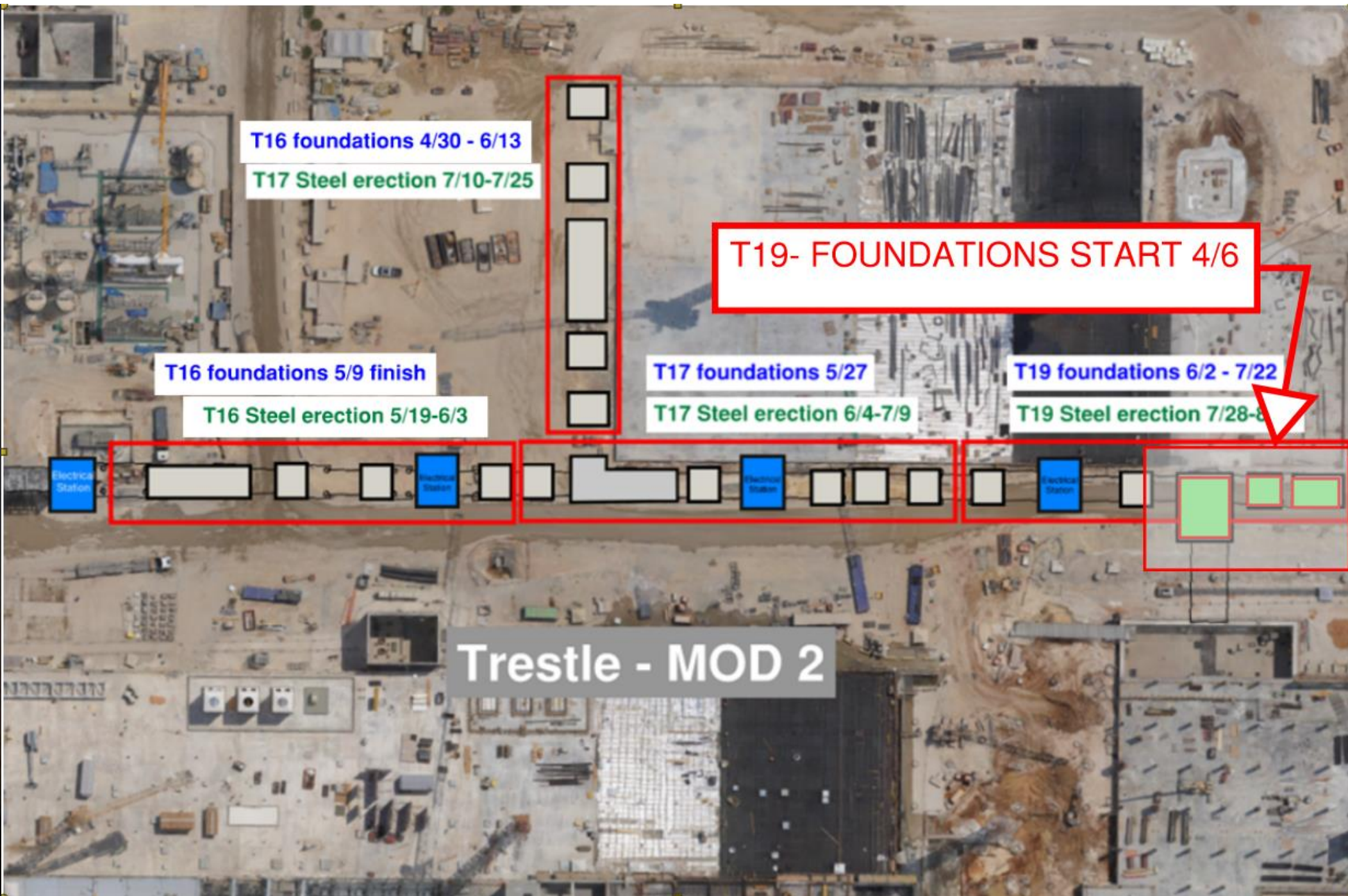
crane
locati
on

HRA AREA

Planning machinery-
truck, boom lift, fork
... etc work- requires
coordination in
advance Hcc Sup &
meet the requirement
before starting work
to insure not damage
facilities

For all subs
for compeleting SOW to submit microshedule till
25.07.24 for each sow , including disconnect &
evacuate trailers & material & must comply with
P6 SCHEDULE 100%
after NEY area turned to intel need sipp all NEY

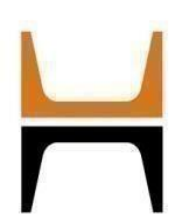




BSGS







HOFFMAN CONSTRUCTION COMPANY



HOFFMAN
Sparrow  

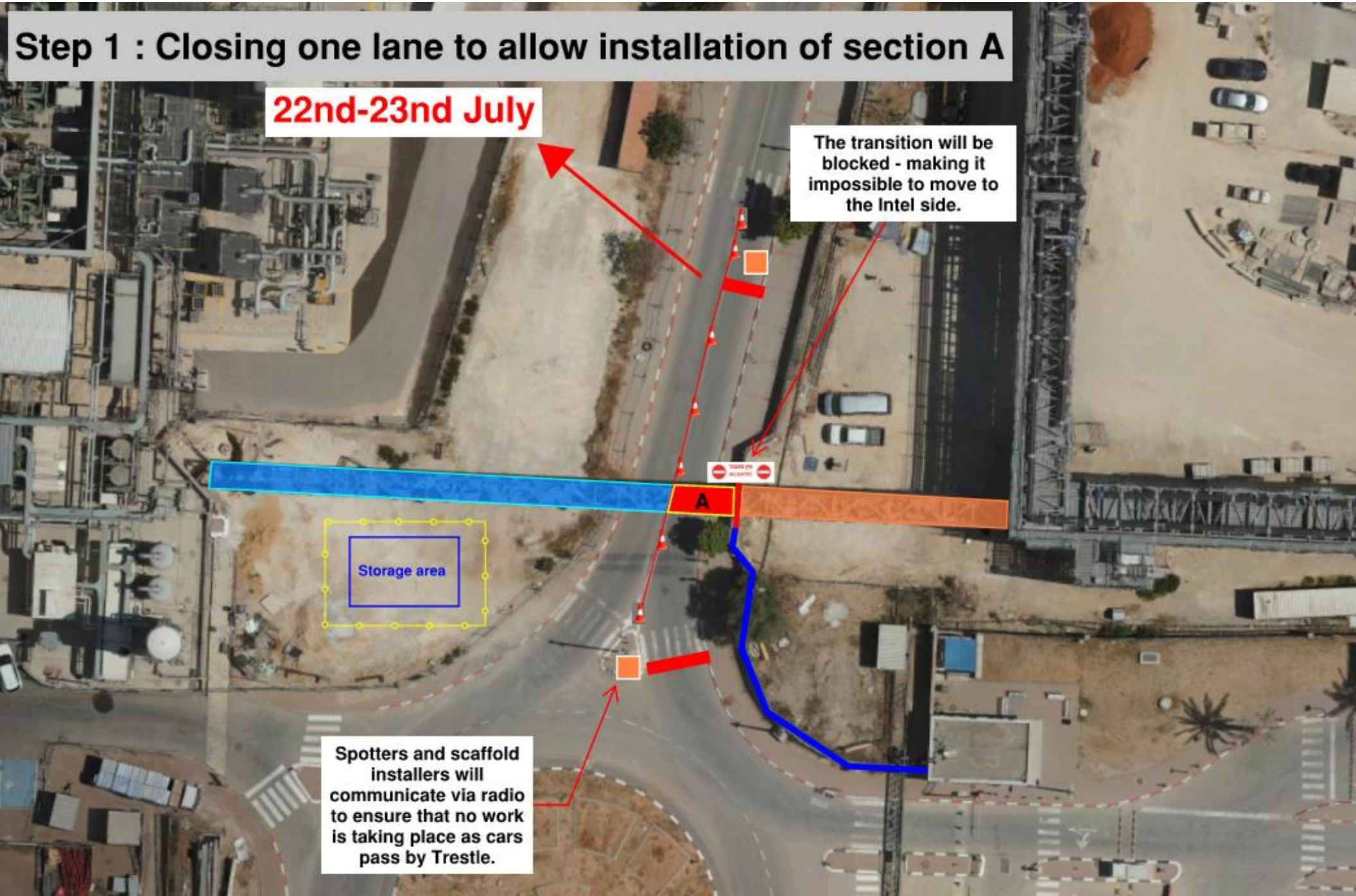
Step 1 : Closing one lane to allow installation of section A

22nd-23rd July

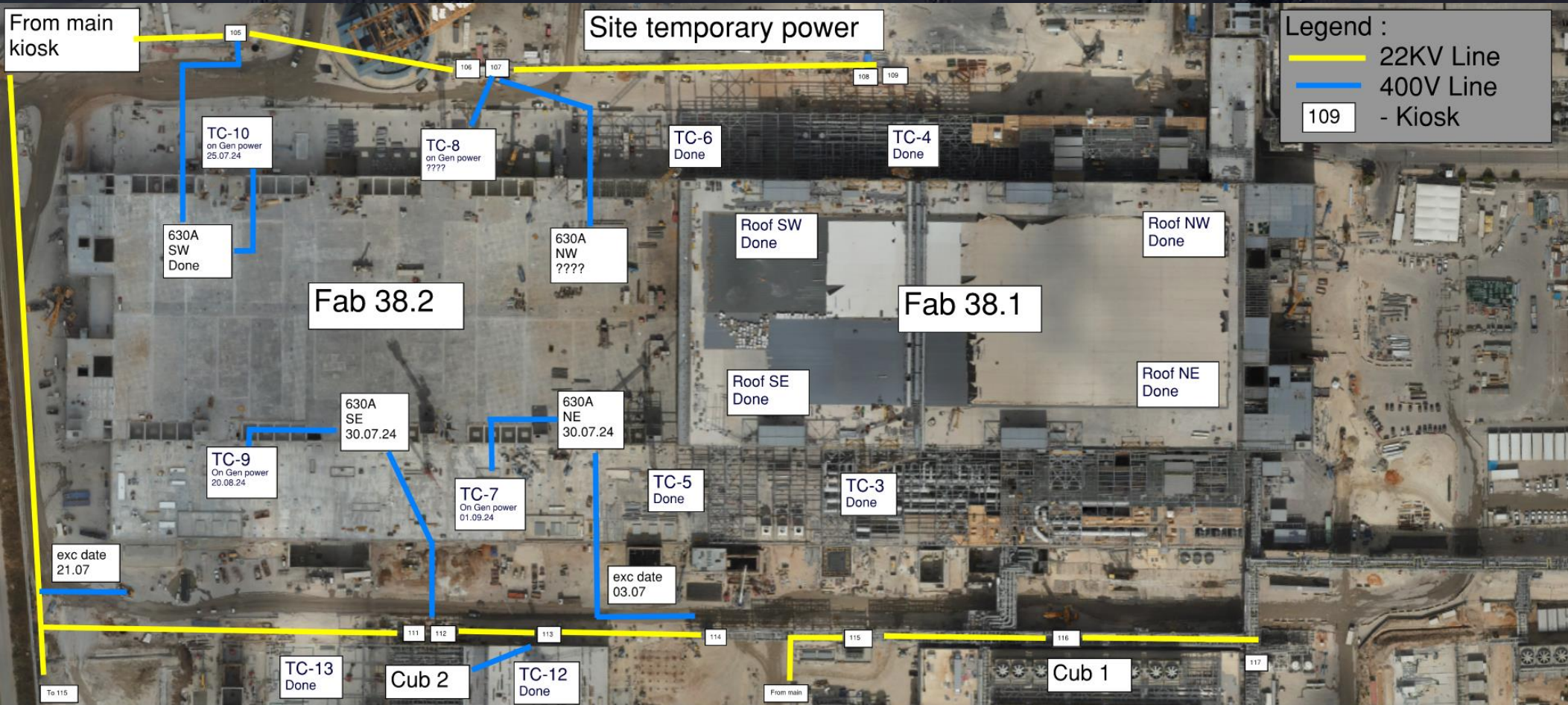
The transition will be blocked - making it impossible to move to the Intel side.

Storage area

Spotters and scaffold installers will communicate via radio to ensure that no work is taking place as cars pass by Trestle.

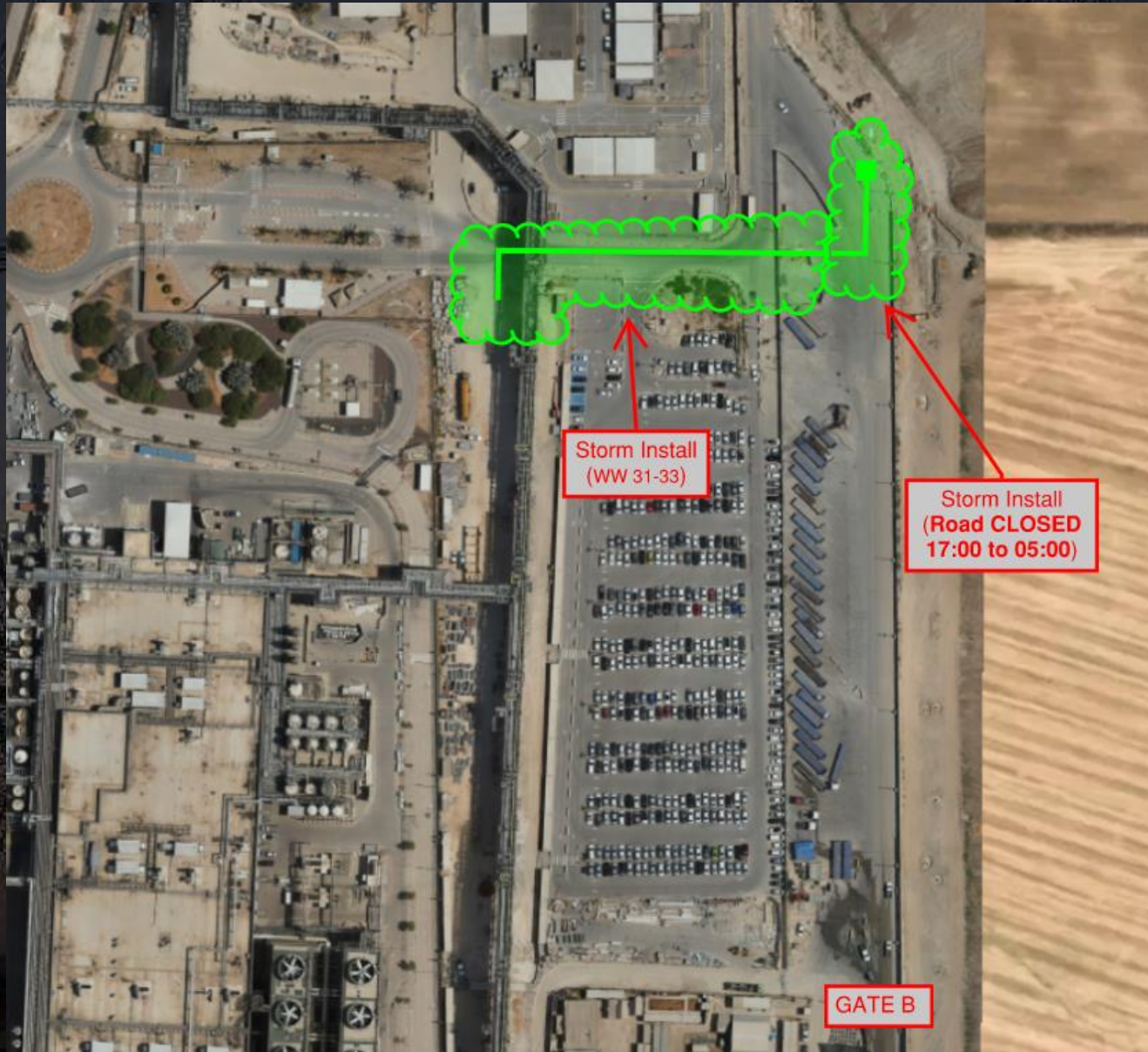


Daily Coordination Meeting



Daily Coordination Meeting

Site Logistics
North Gate B

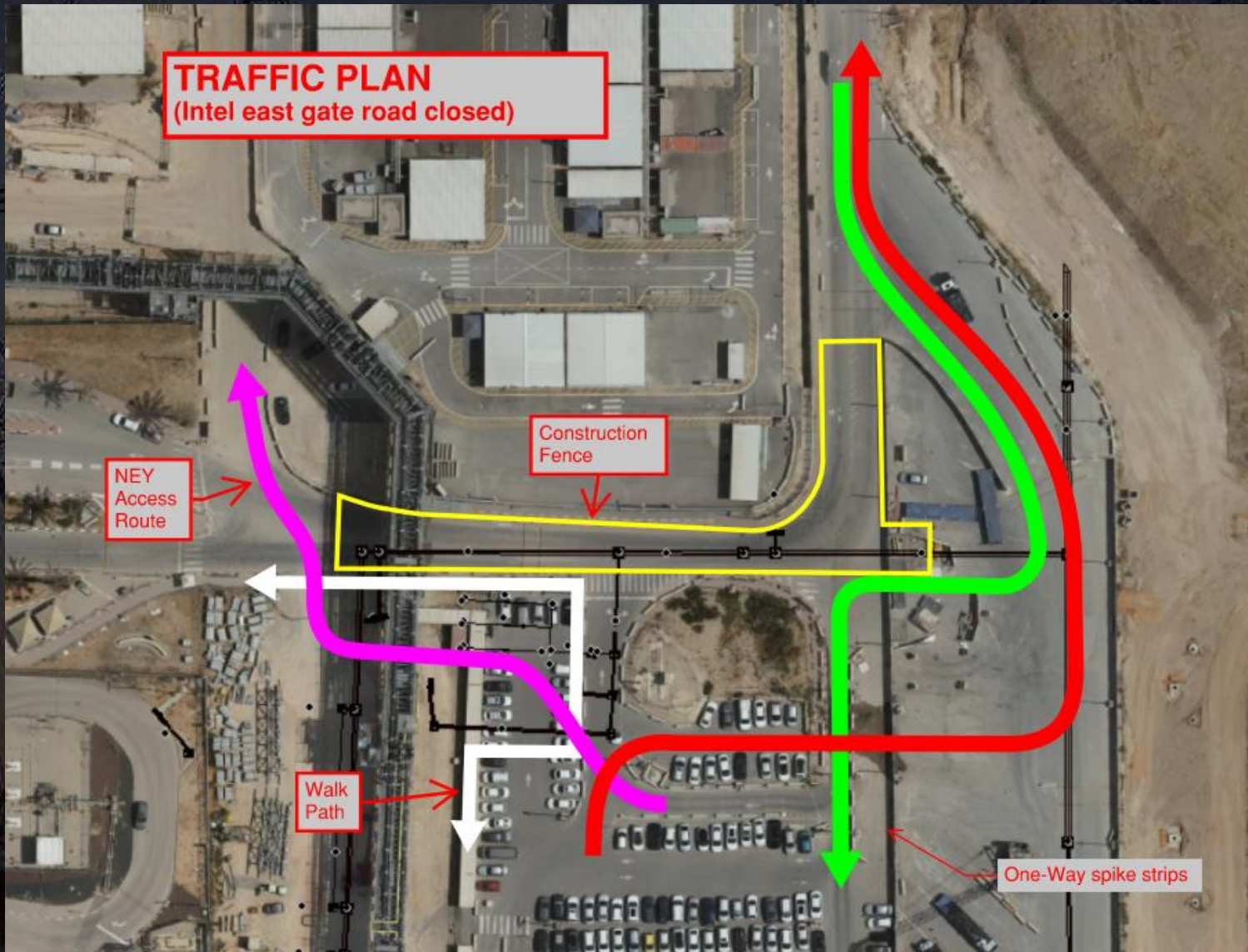




Daily Coordination Meeting

Site Logistics

Traffic Plan

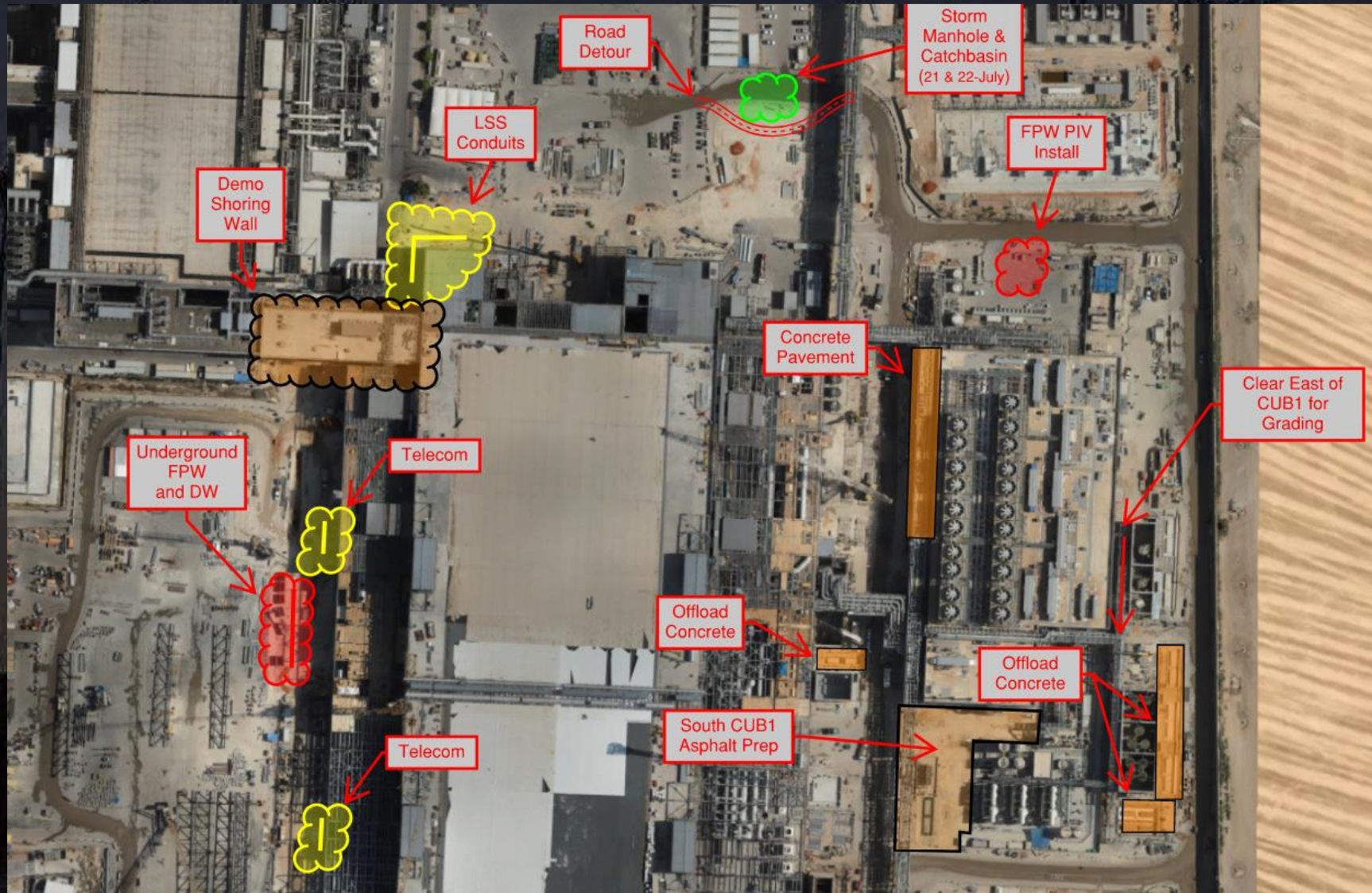




Daily Coordination Meeting

Site Logistics

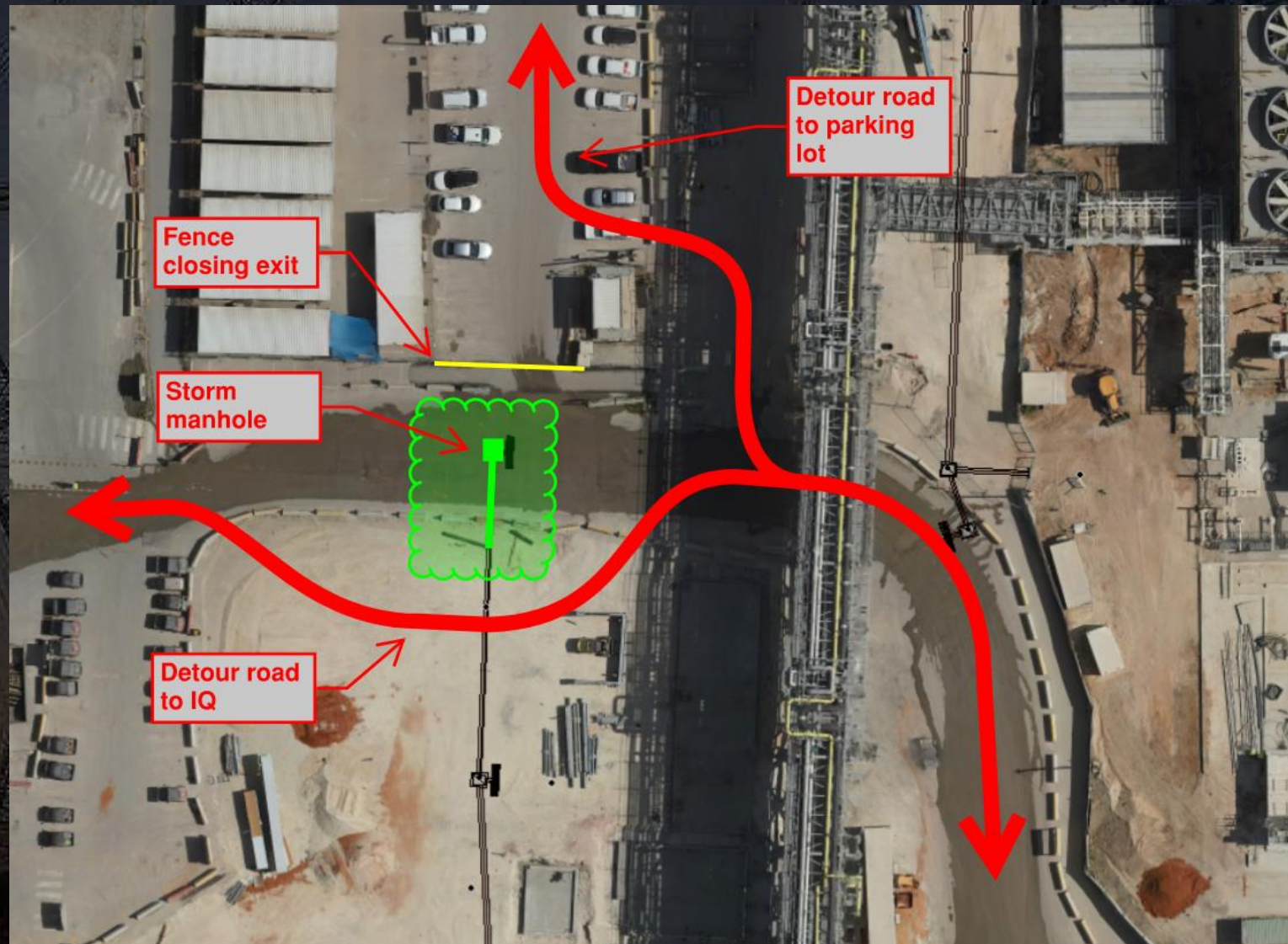
North



Daily Coordination Meeting

Site Logistics

IQ Access

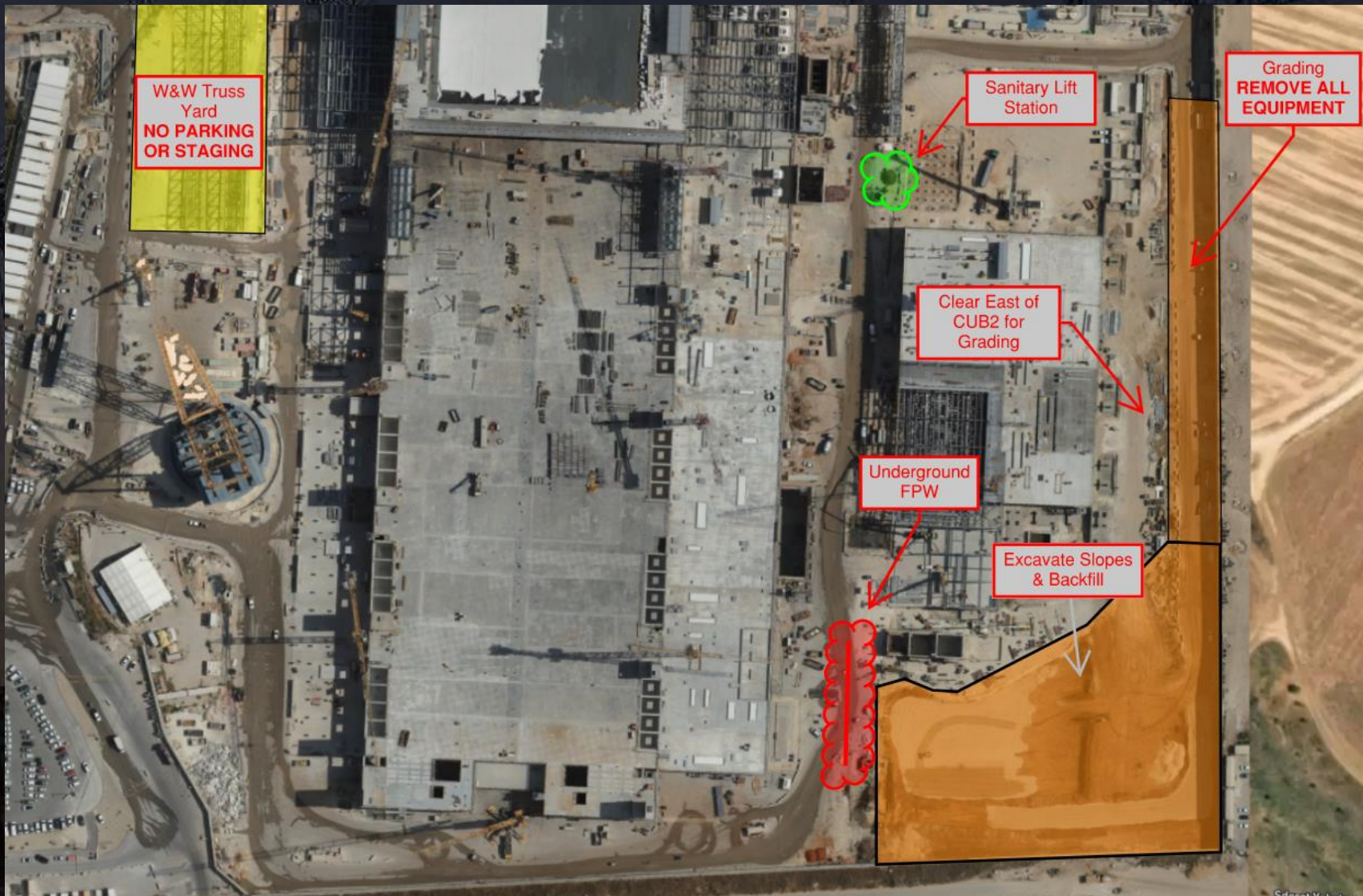




Daily Coordination Meeting

Site Logistics

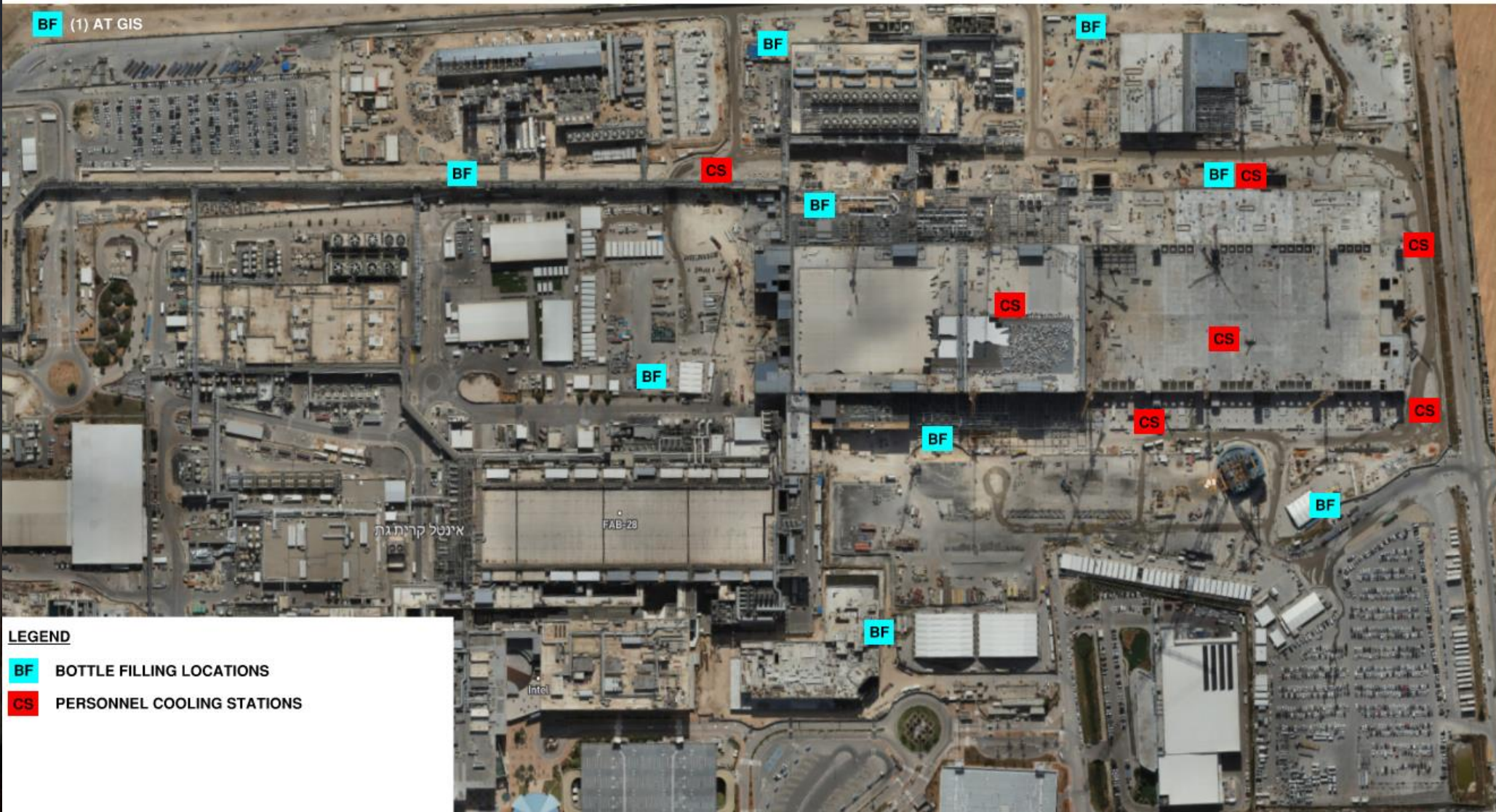
South



Daily Coordination Meeting

WATER BOTTLE FILLING & PERSONNEL COOLING STATIONS

BF (1) AT GIS



Commissioning

WW29

TCC Predicted: **61** (249 past due)

TCC Completed: **236**

Delta: **+175** (-74 total)

CCC Predicted: **58** (17 past due)

CCC Completed: **67**

Delta: **+9** (-8 total)

GT Predicted: **40** (51 past due)

GT Completed: **67**


Delta: **+27** (-24 total)


Stop the Drop


- Seeing an increase in incidents where items and materials are being dropped from heights.
- Please ensure that we are not only focusing on tools when considering what can fall during our work.
- We never plan to push something over, or lose control of our material- but much of our work takes place at heights and the potential to drop something over an edge or through a hole is there for all of our works at heights.
- We need to ensure that we are preventing this possibility as much as possible, and when it doesn't make sense to secure something, we are red barricading, **WITH SIGNAGE**, the area below.
- We also need to be mindful of where we are storing our material- do not store material against guardrails or near leading edges.


Heat Index- July 21st

	temperature (°F)																
	80	82	84	86	88	90	92	94	96	98	100	102	104	106	108	110	
Relative Humidity (%)	40	80	81	83	85	88	91	94	97	101	105	109	114	119	124	130	136
	45	80	82	84	87	89	93	96	100	104	109	114	119	124	130	137	
	50	81	83	85	88	91	95	99	103	108	113	118	124	131	137		
	55	81	84	86	89	93	97	101	106	112	117	124	130	137			
	60	82	84	88	91	95	100	105	110	116	123	129	137				
	65	82	85	89	93	98	103	108	114	121	128	136					
	70	83	86	90	95	100	105	112	119	126	134						
	75	84	88	92	97	103	109	116	124	132							
	80	84	89	94	100	106	113	121	129								
	85	85	90	96	102	110	117	126	135								
	90	86	91	98	105	113	122	131									
	95	86	93	100	108	117	127										
100	87	95	103	112	121	132											

 Caution

 Extreme Caution

 Danger

 Extreme Danger

Extreme Caution Bordering on Danger

- Ensuring water and shaded areas available
- Acclimating workers
- Emergency planning and response
- Training workers and supervisors on the signs of heat stress and preventative measures
- Modified work schedules and/or rotating out workers
- Monitoring of workers for signs of heat stress
- Additional water breaks mandated. (Can be in work area)
- Increased rotation and monitoring of workers and area conditions.