

Daily Coordination Meeting



14:00 Sign In

Daily Coordination Meeting

General Topics:

- **Avi crane dismantle starting this week**



RES19 SOMD
10:00 pm



TA TB TC AA AB AC AD AE AF AG AH AJ AK AL AM AN AO AP AQ AR AS AT AU AV AW AX AY AZ LL BB BC BD BE BF BG BH BJ BK BL CA

08
09
10
11
12
13
14
15
16
17
18
19
20
21
22
23
24
25
26

LESICO
Rack install 1/9
Duct in 1/14

HEATCOIL REPL.
Carmel UGD Finish 1/9
HYG Start 1/12

NEWCOTEC
MOD1/MOD2
Separation

WW/SN
HSS ready for
uninstall and correct

AFCON

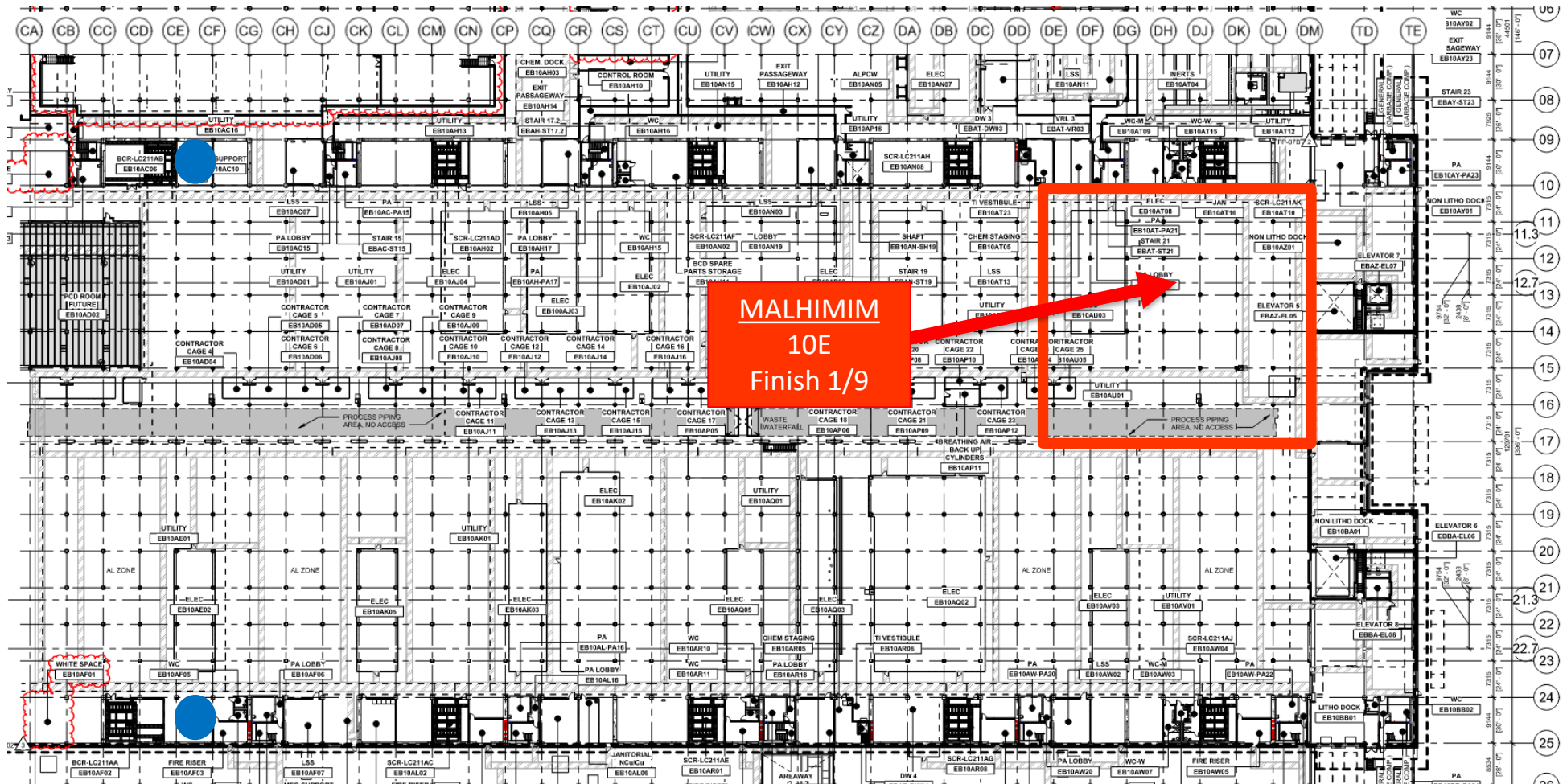
ELRAM

Drywall install

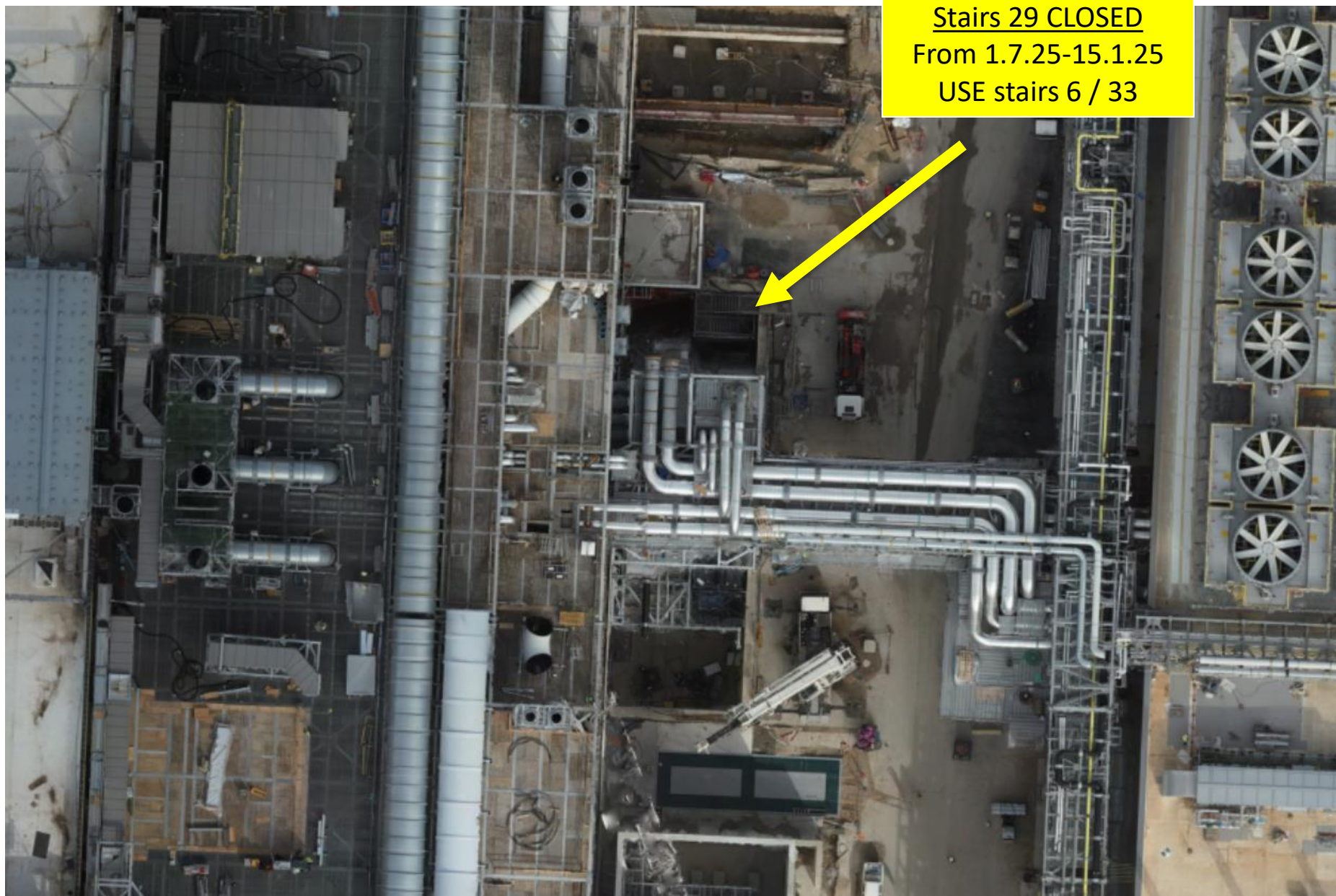
MEP+Elctrical
Ready for re-install



UTILITY LEVEL MOD2



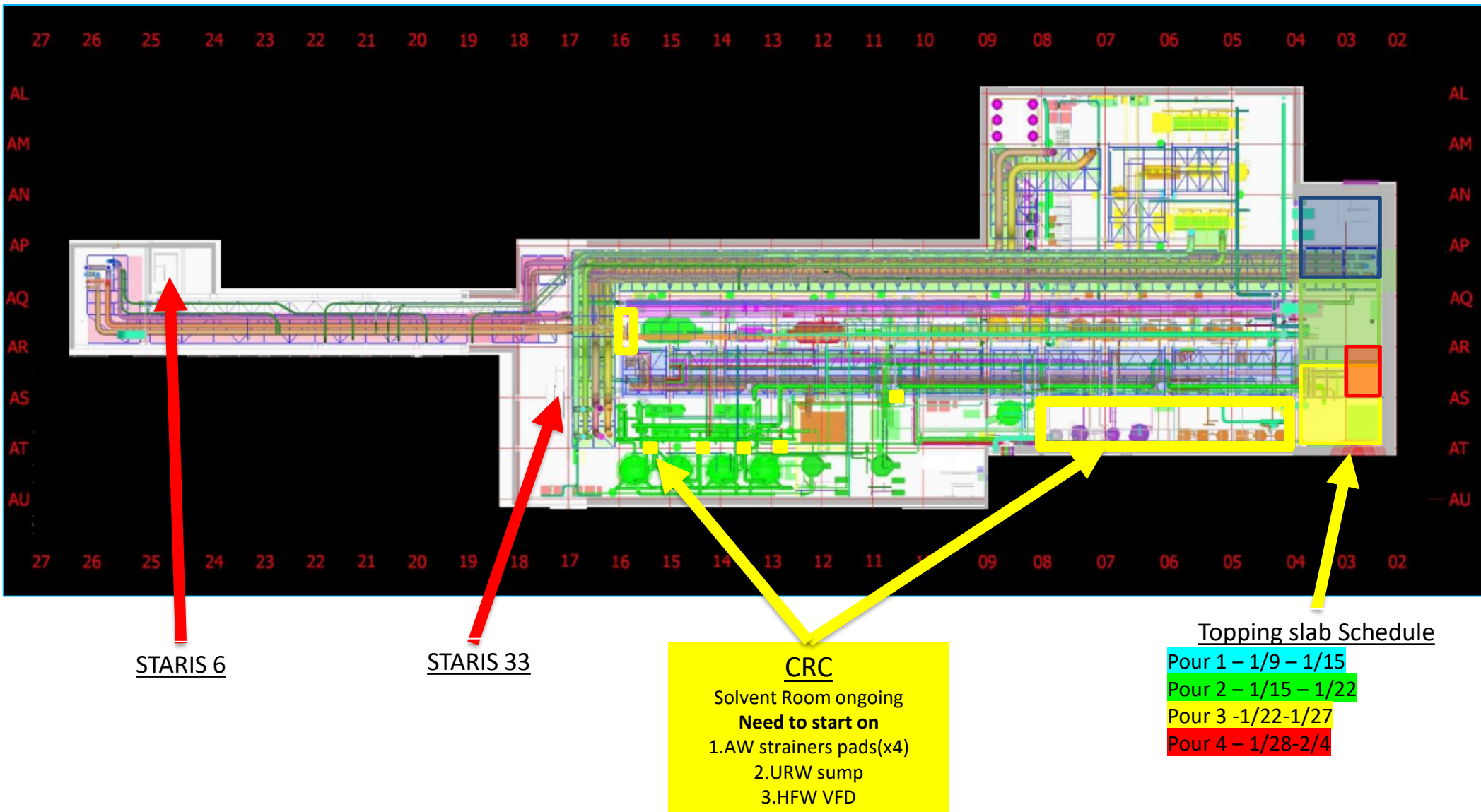
SUT 38.1 Accesses& Egress



Stairs 29 CLOSED
From 1.7.25-15.1.25
USE stairs 6 / 33



SUT 38.1 LEVEL



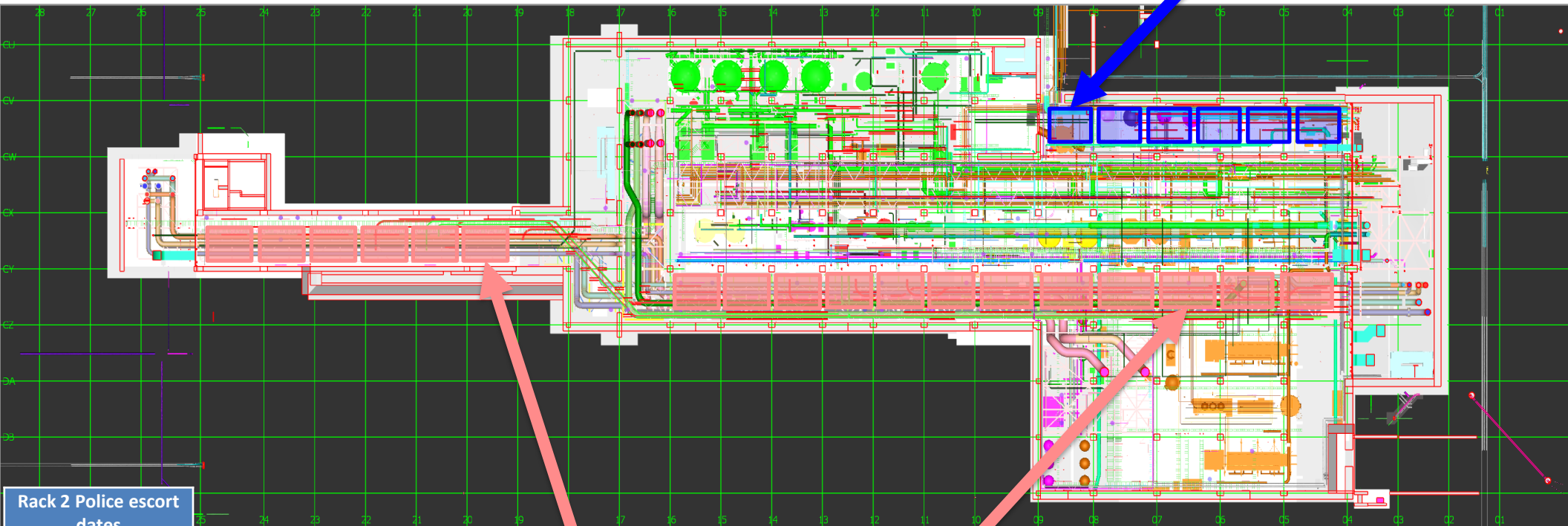


HOFFMAN CONSTRUCTION COMPANY



SUT 38.2 LEVEL

Rack 4b
Lifting
schedule
#6 –

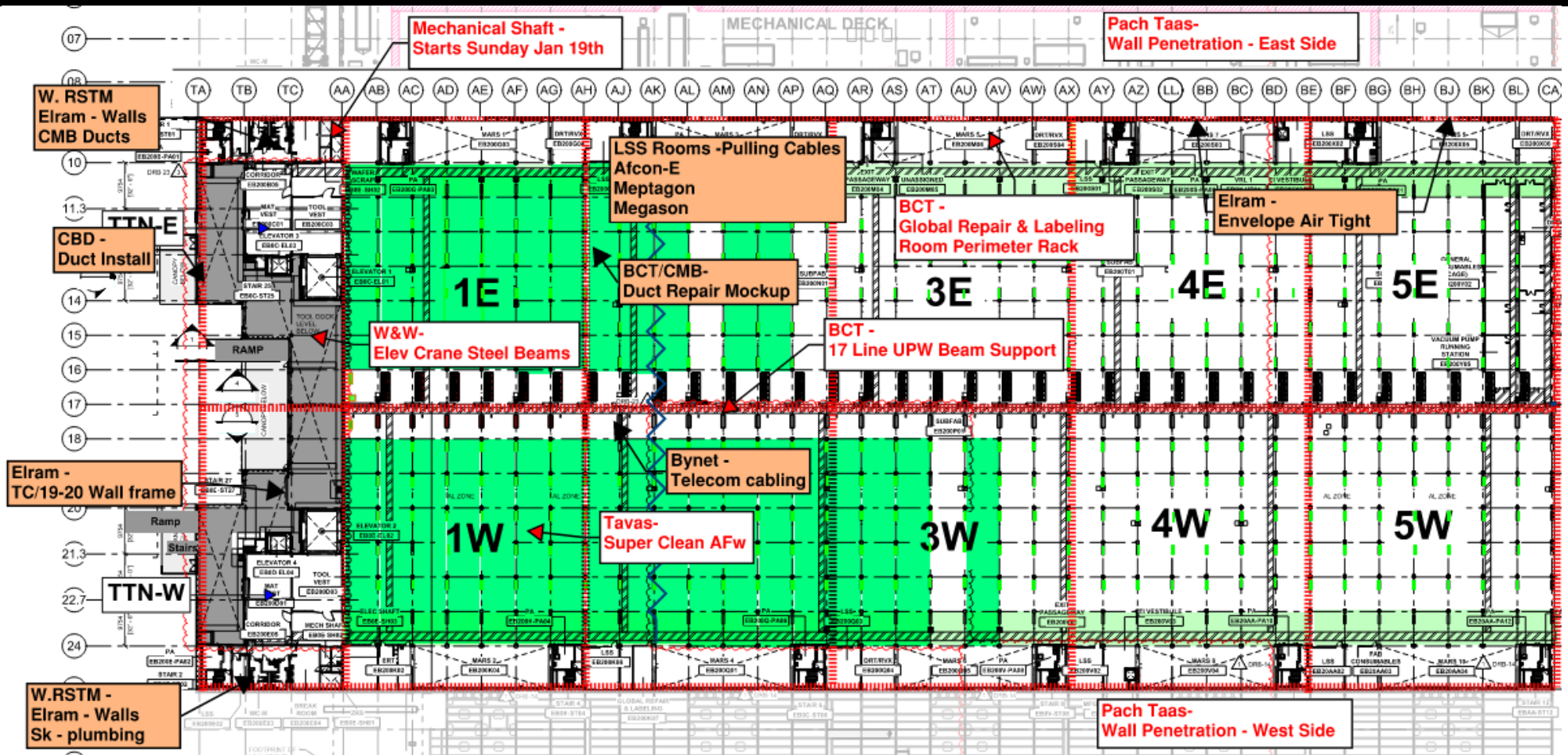


Rack 2 Police escort dates	
v24.11.24	
v25.11.24	
v3.12.24	
v9.12.24	
v12.12.24	
v15.12.24	
v17.12.24	
v22.12.24	
5.1.25	
14.1.25 > 2.2.25	
3.2.25	
9.2.25	

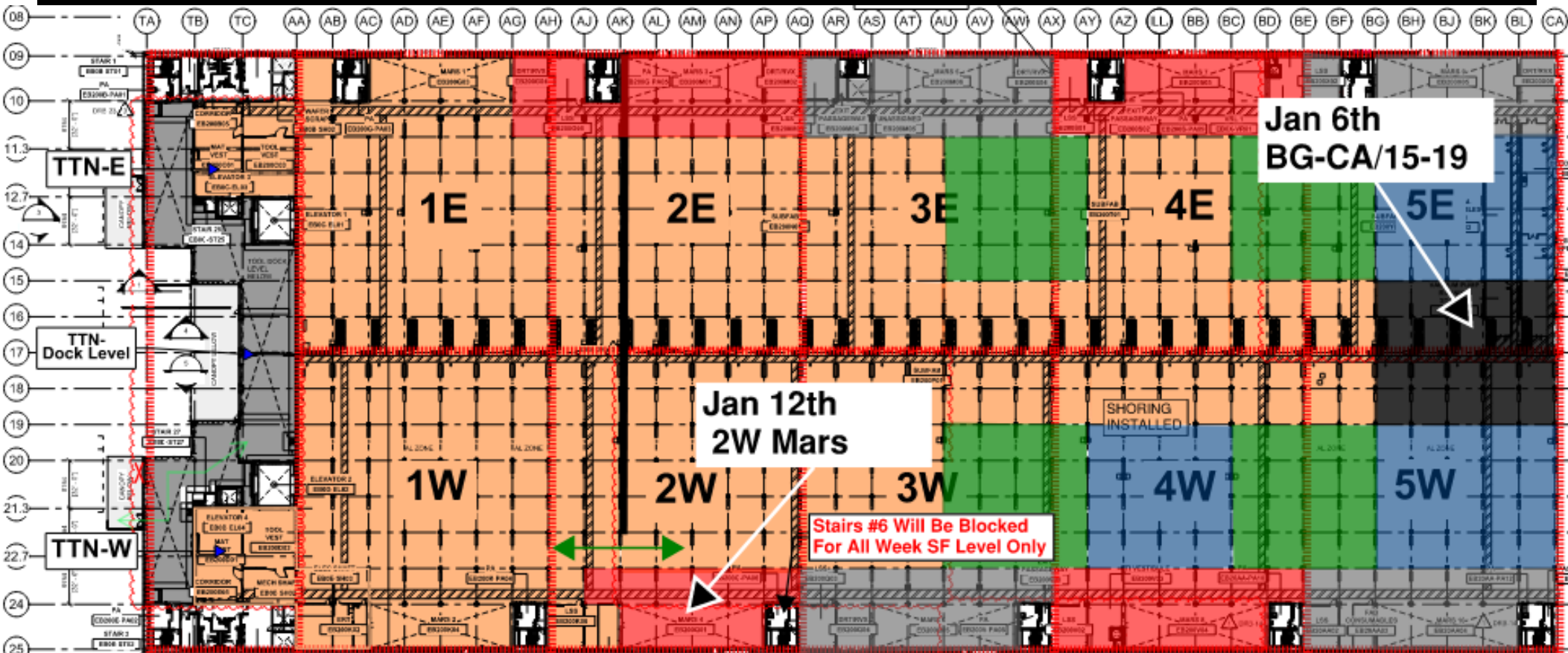
Rack6
MIMO -
Module #1
12.2.25

Rack 2
MIMO -
Module #10
2.2.25

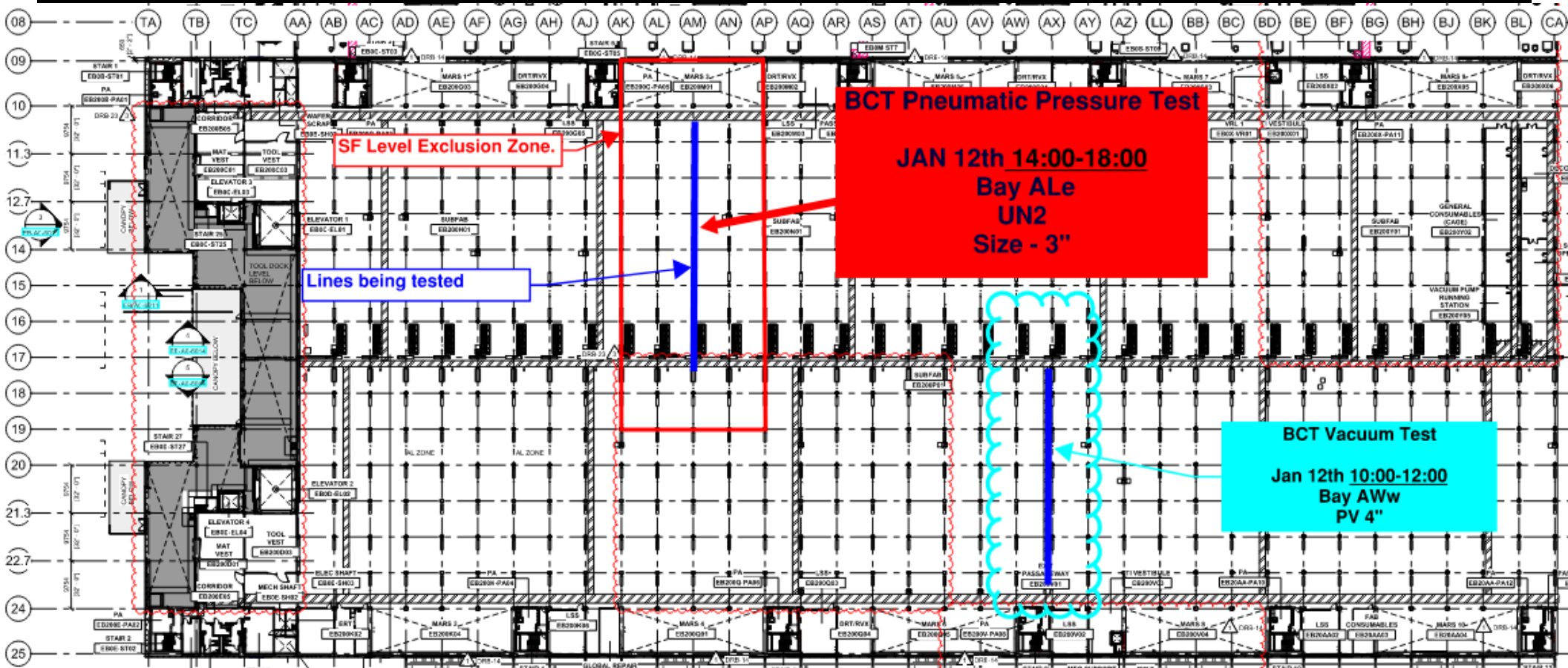
SUBFAB BUILDOUT MOD 1



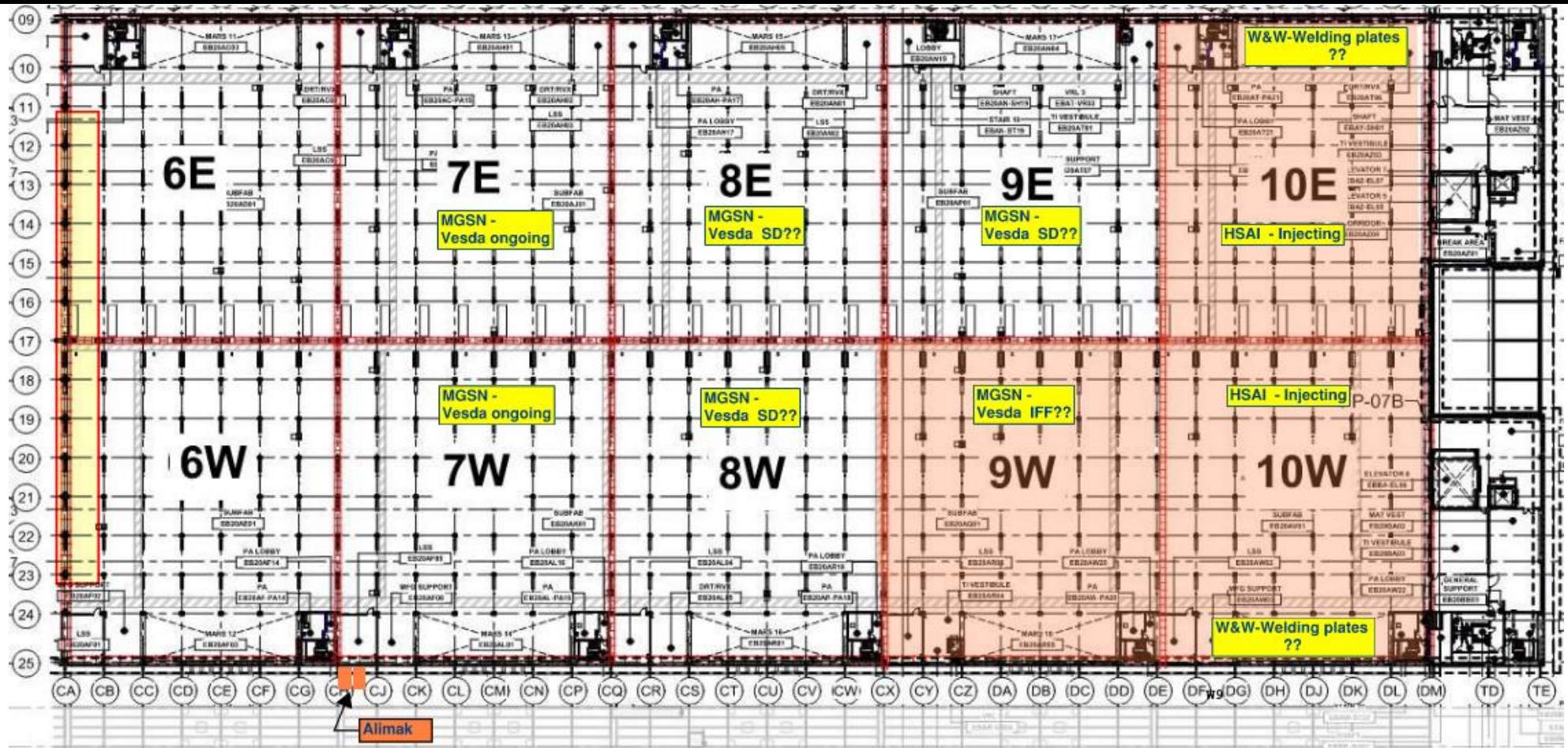
SUBFAB CRC TOPCOAT

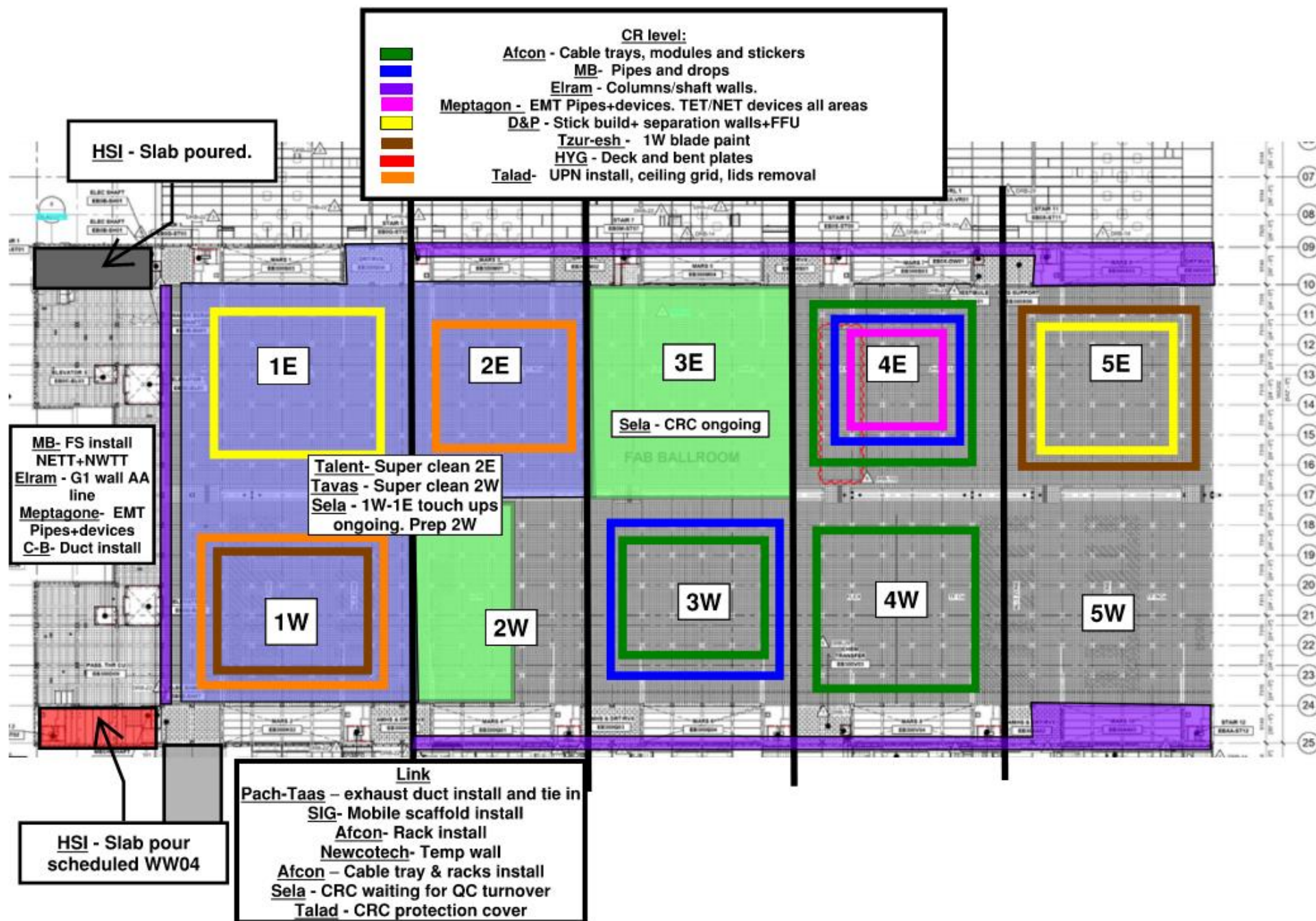
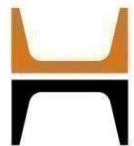


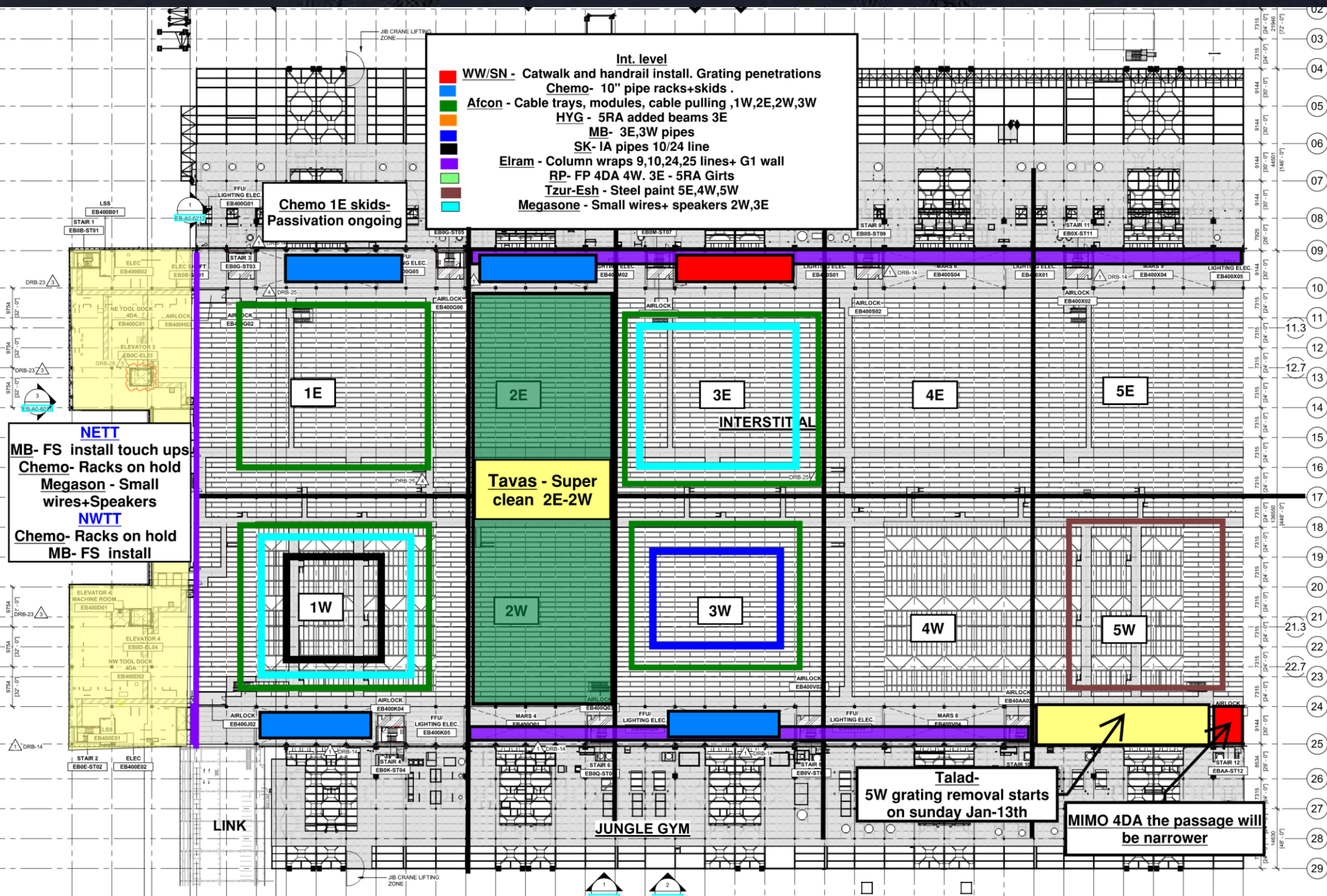
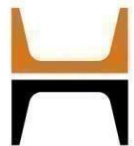
BCT Pressure Test Today

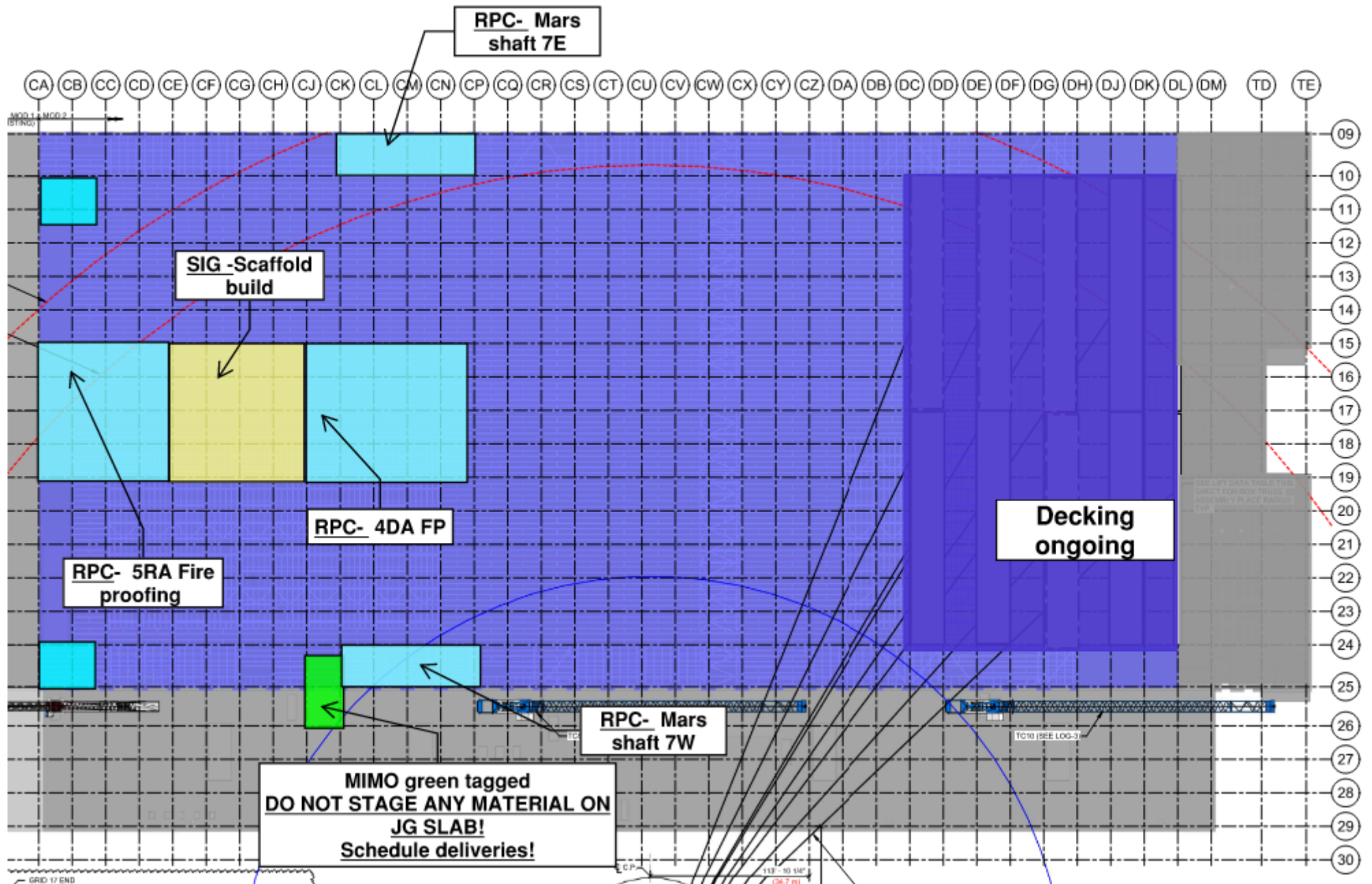


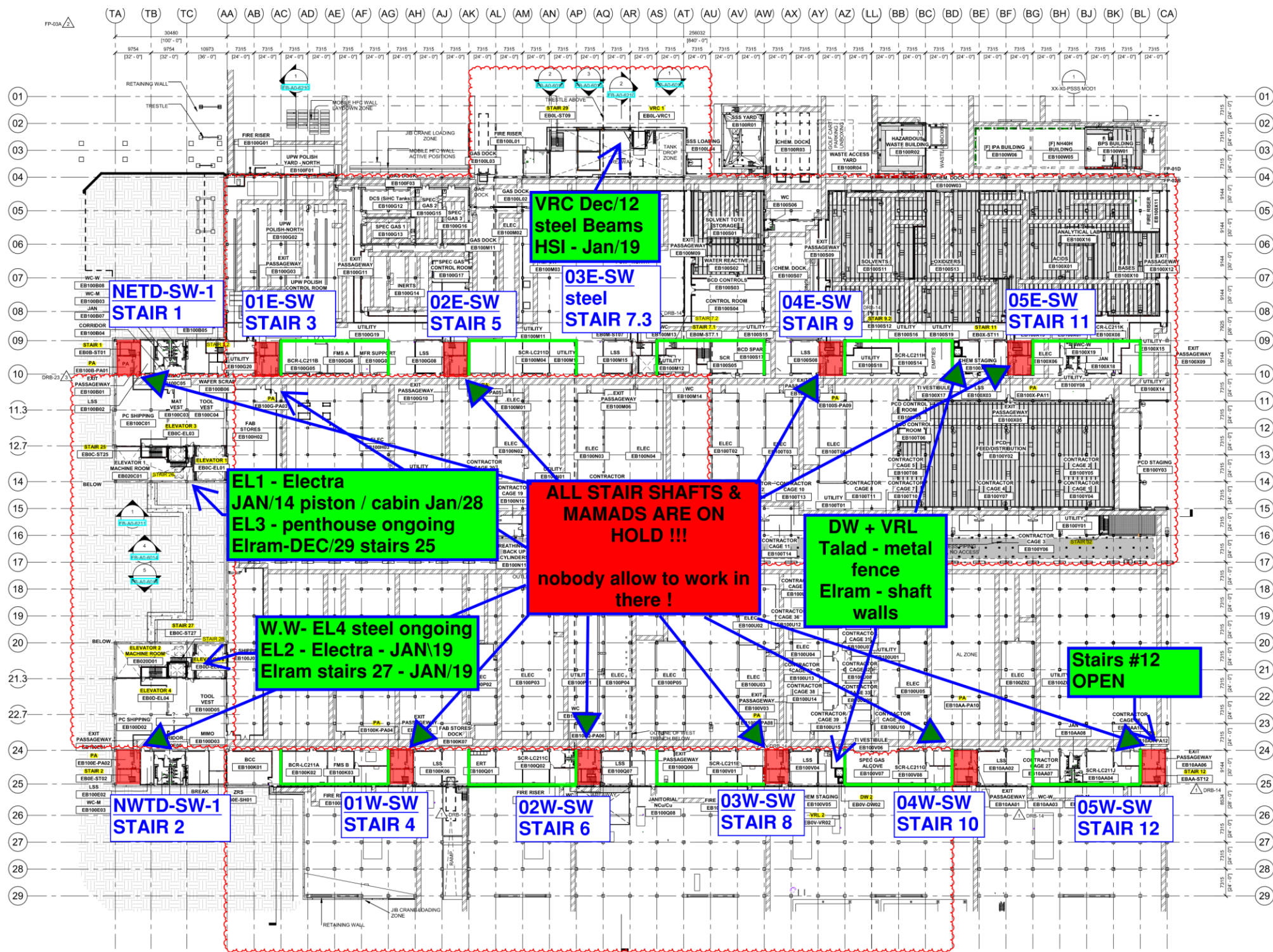
SUBFAB BUILDOUT MOD 2







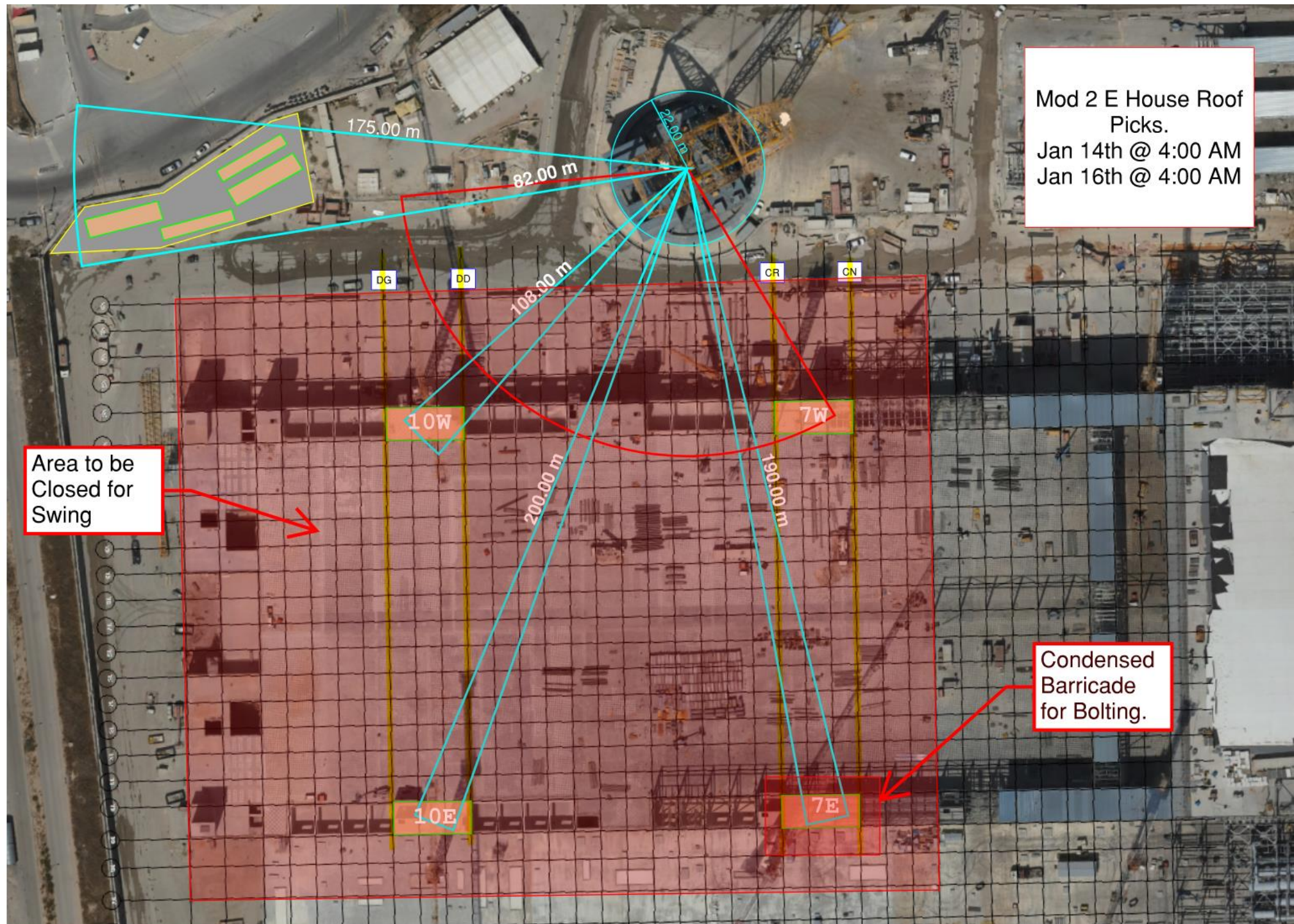




Mod 2 E House Roof
Picks.
Jan 14th @ 4:00 AM
Jan 16th @ 4:00 AM

Area to be
Closed for
Swing

Condensed
Barricade
for Bolting.



Siding - West FAB - JYG

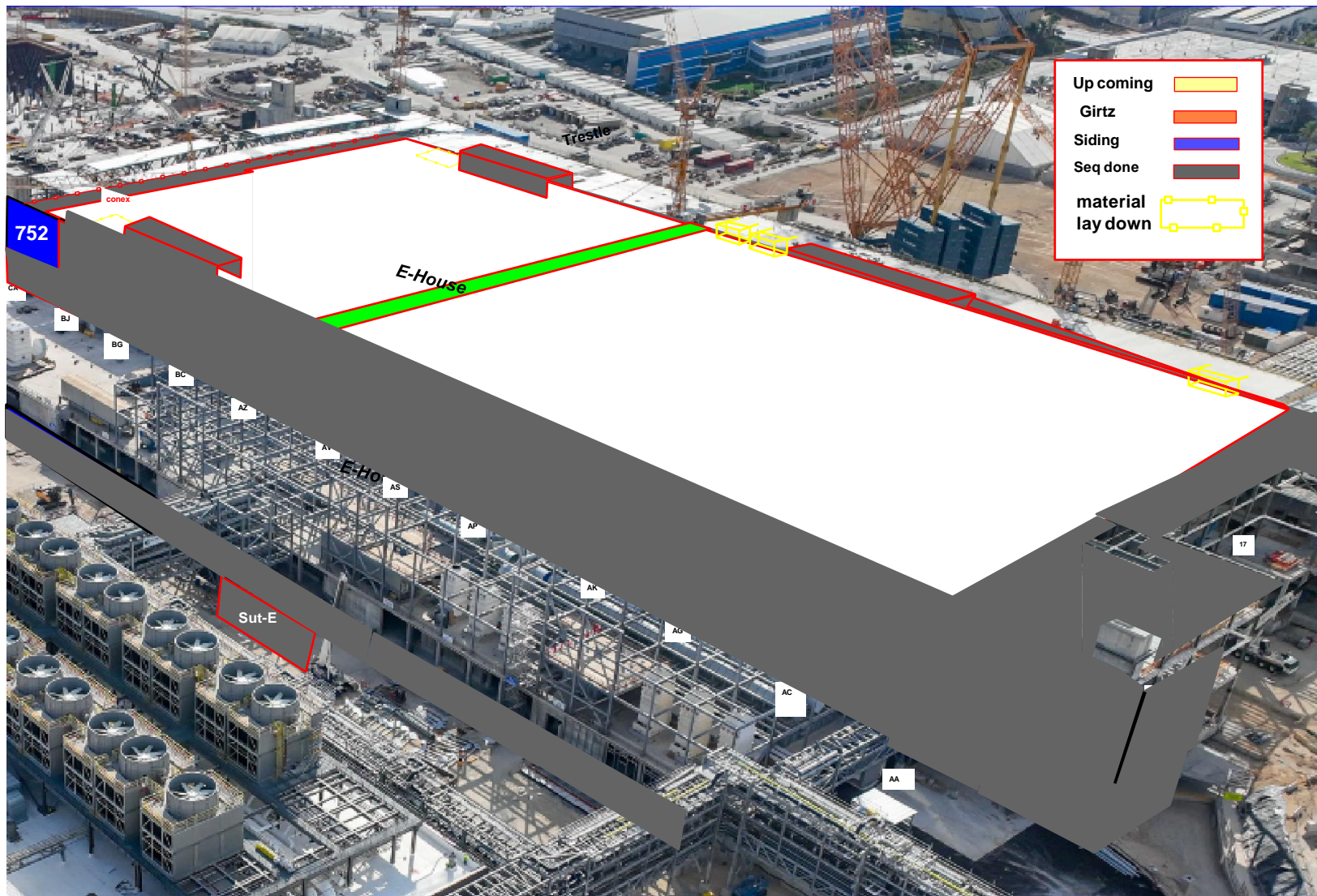
BLOWDOWN 30%

Link

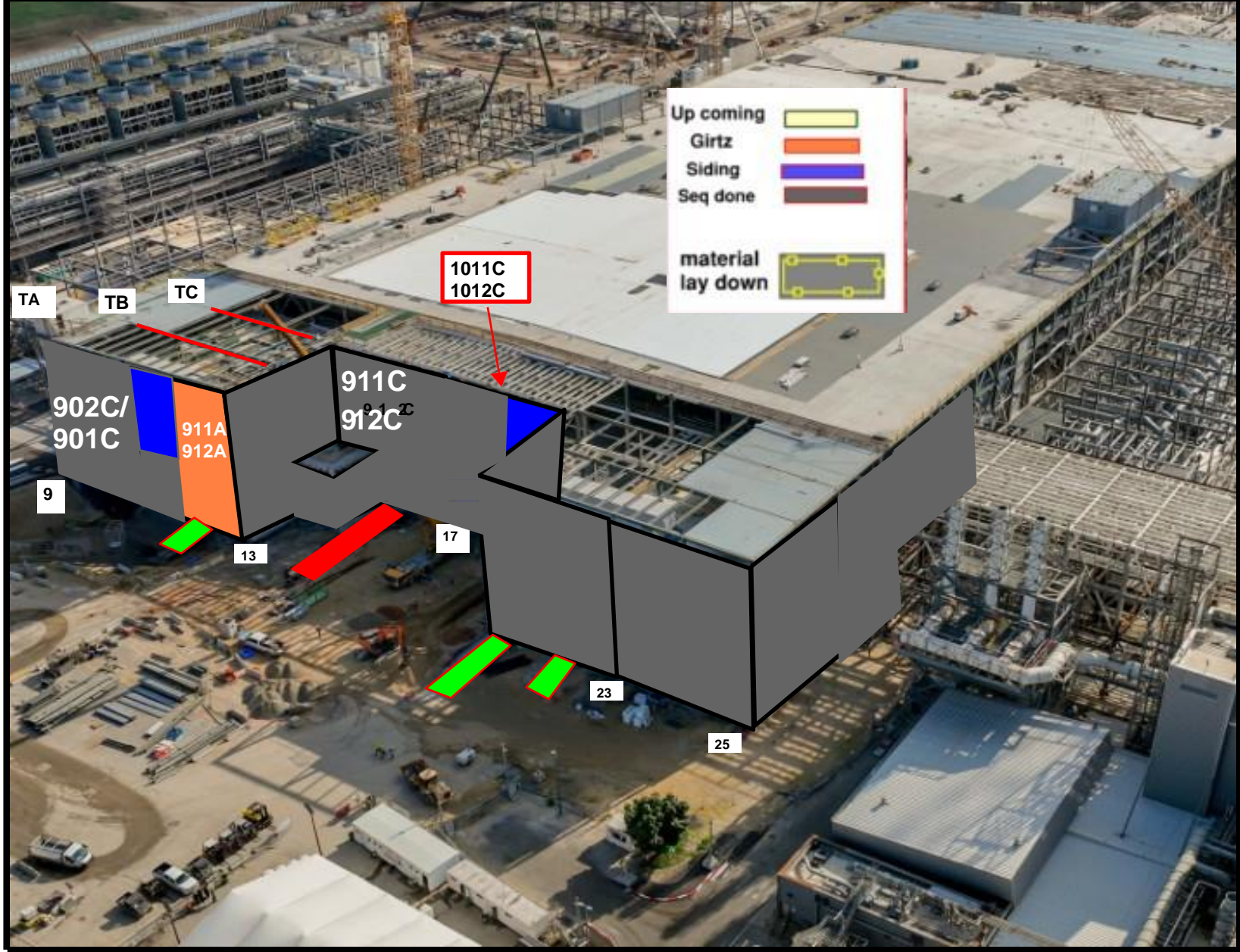
Siding - East FAB - PSSS

BLOWDOWN 30%

[illegible]



Walk path



Up coming	<div></div>
Girtz	<div></div>
Siding	<div></div>
Seq done	<div></div>
material lay down	<div></div>

TA

TB

TC

1011C
1012C

902C/
901C

911A
912A

911C
912C

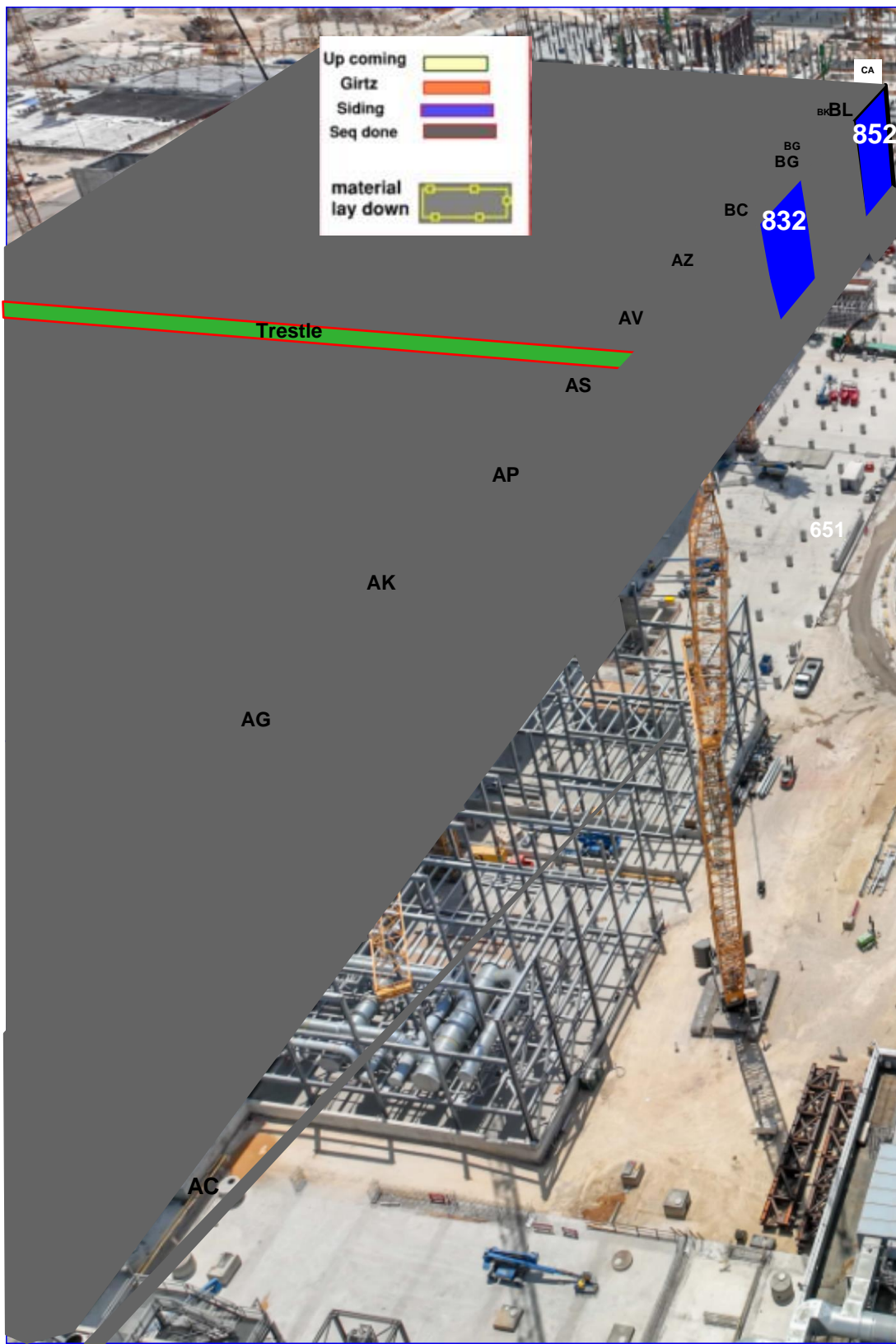
9

13

17

23

25



Up coming

Girtz

Siding

Seq done

material lay down

Trestle

AC

AG

AK

AP

AS

AV

AZ

BC

BG

BL

CA

832

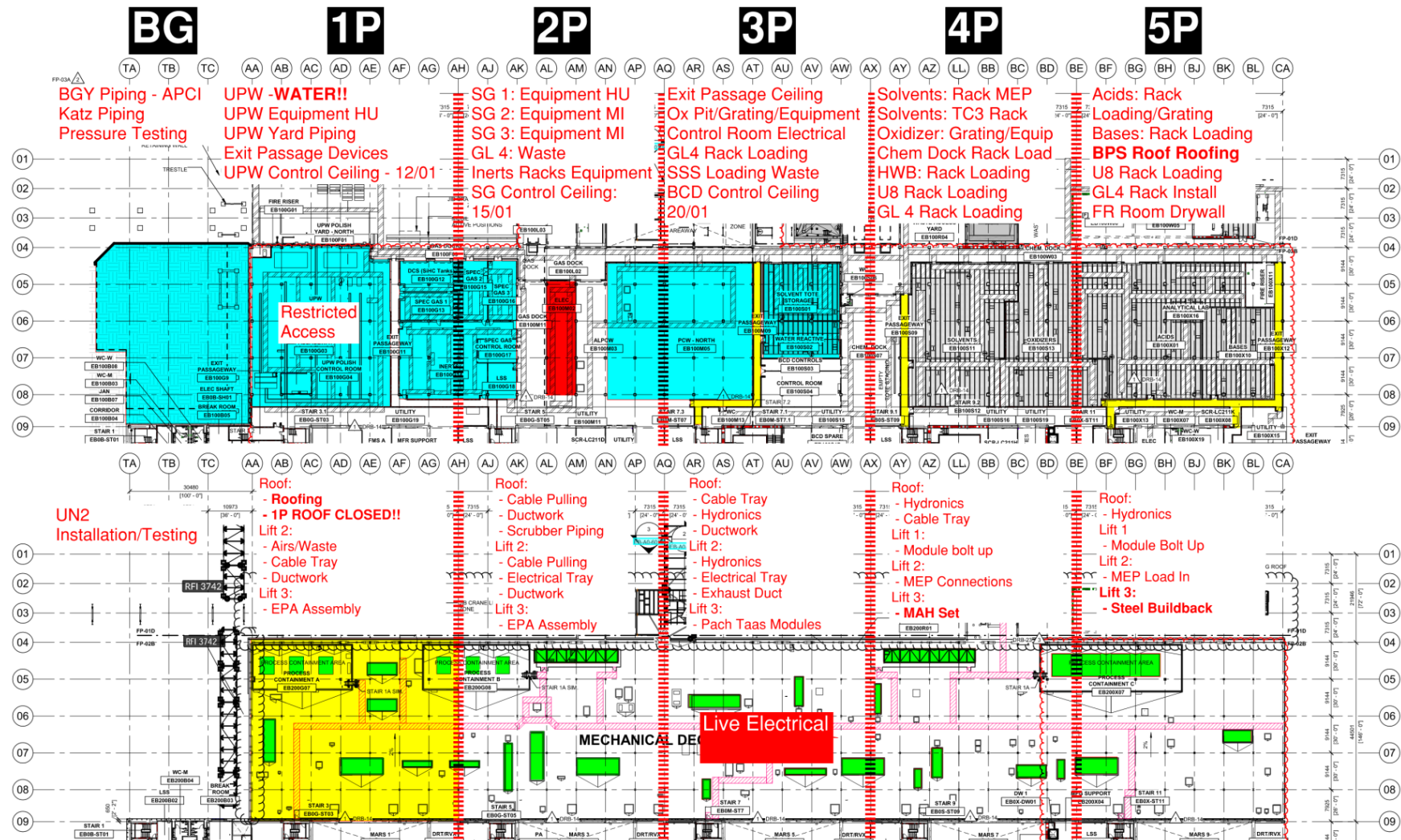
852

651

PSSS.1

Utility Level
1YA

PSSS Roof
2SA



PSSS.2

6P

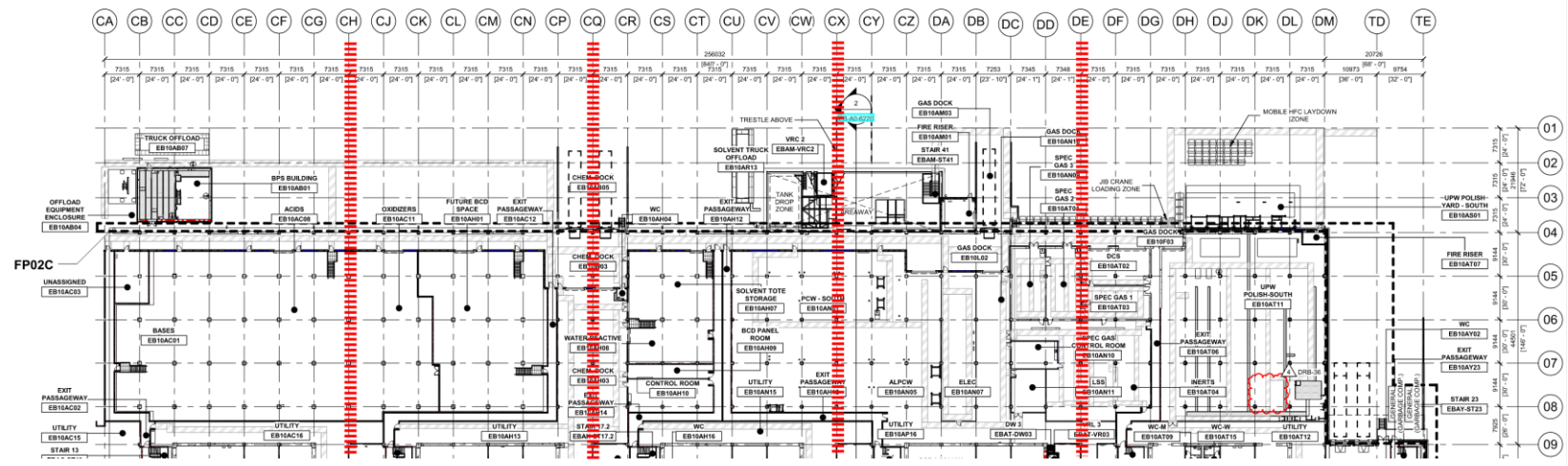
7P

8P

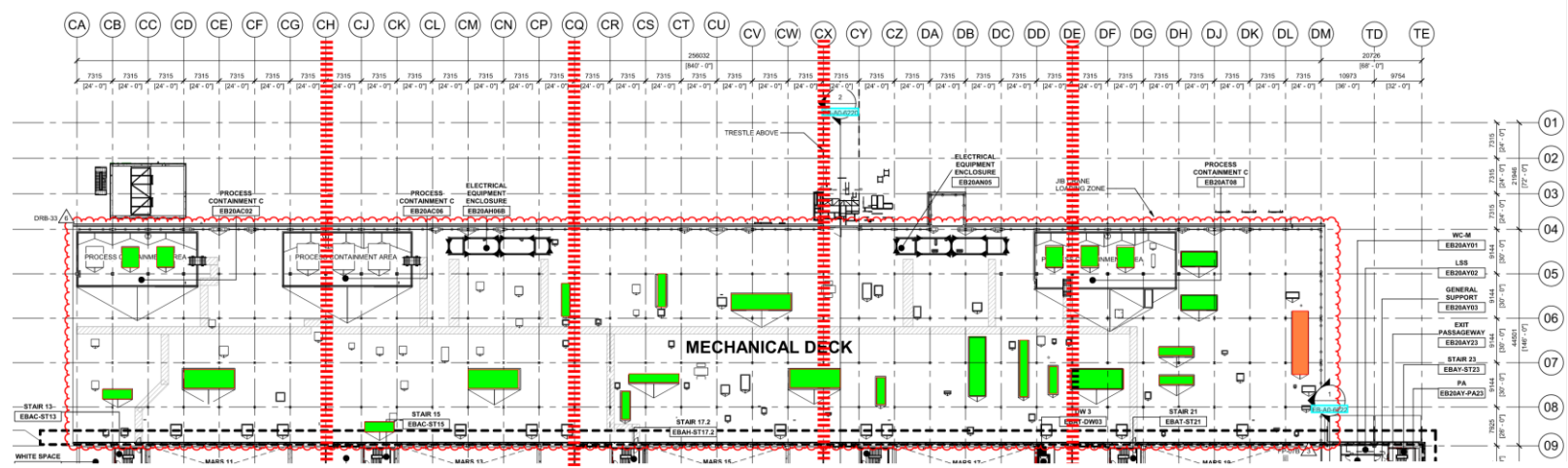
9P

10P

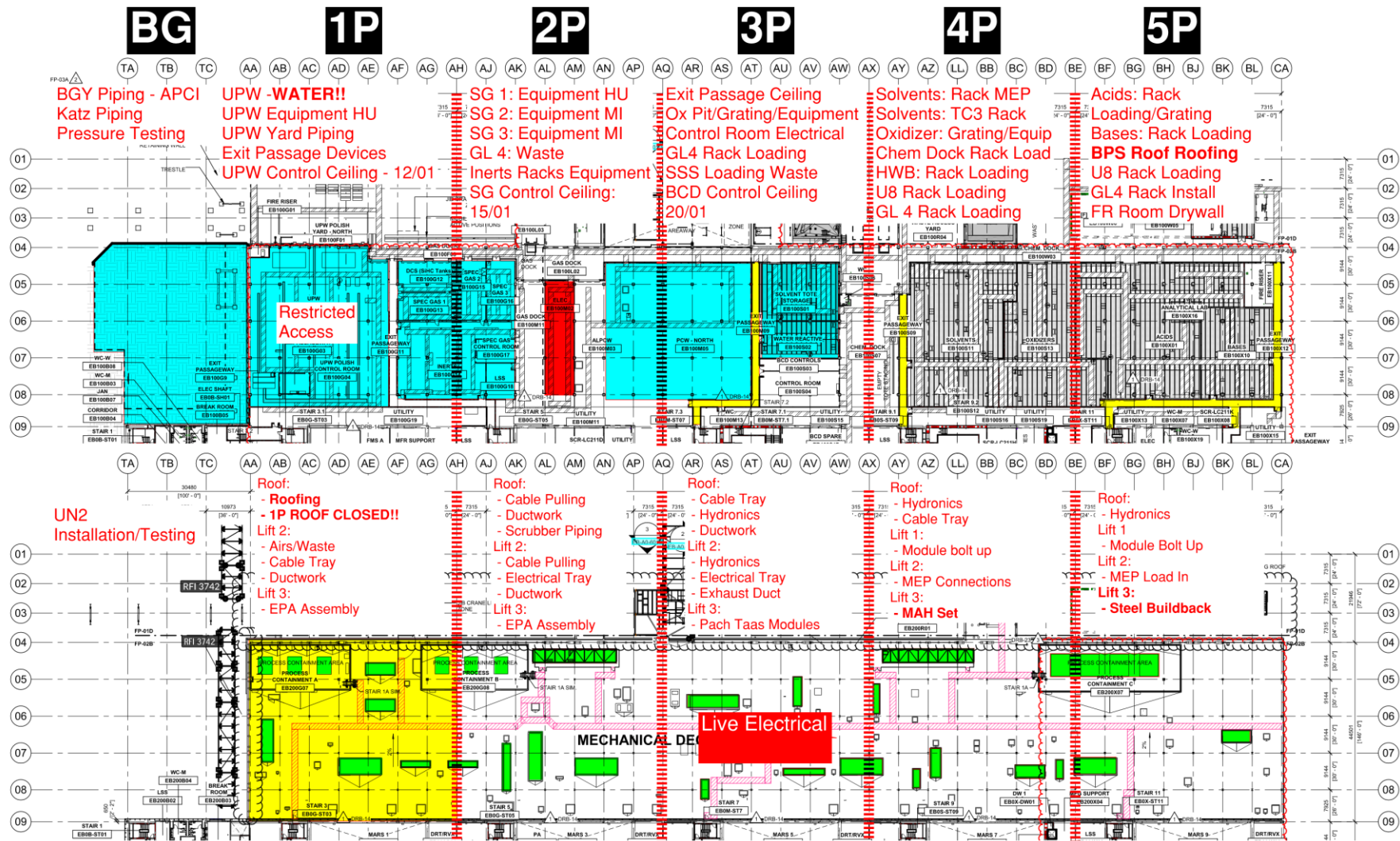
Utility Level
1YA



PSSS Roof
2SA

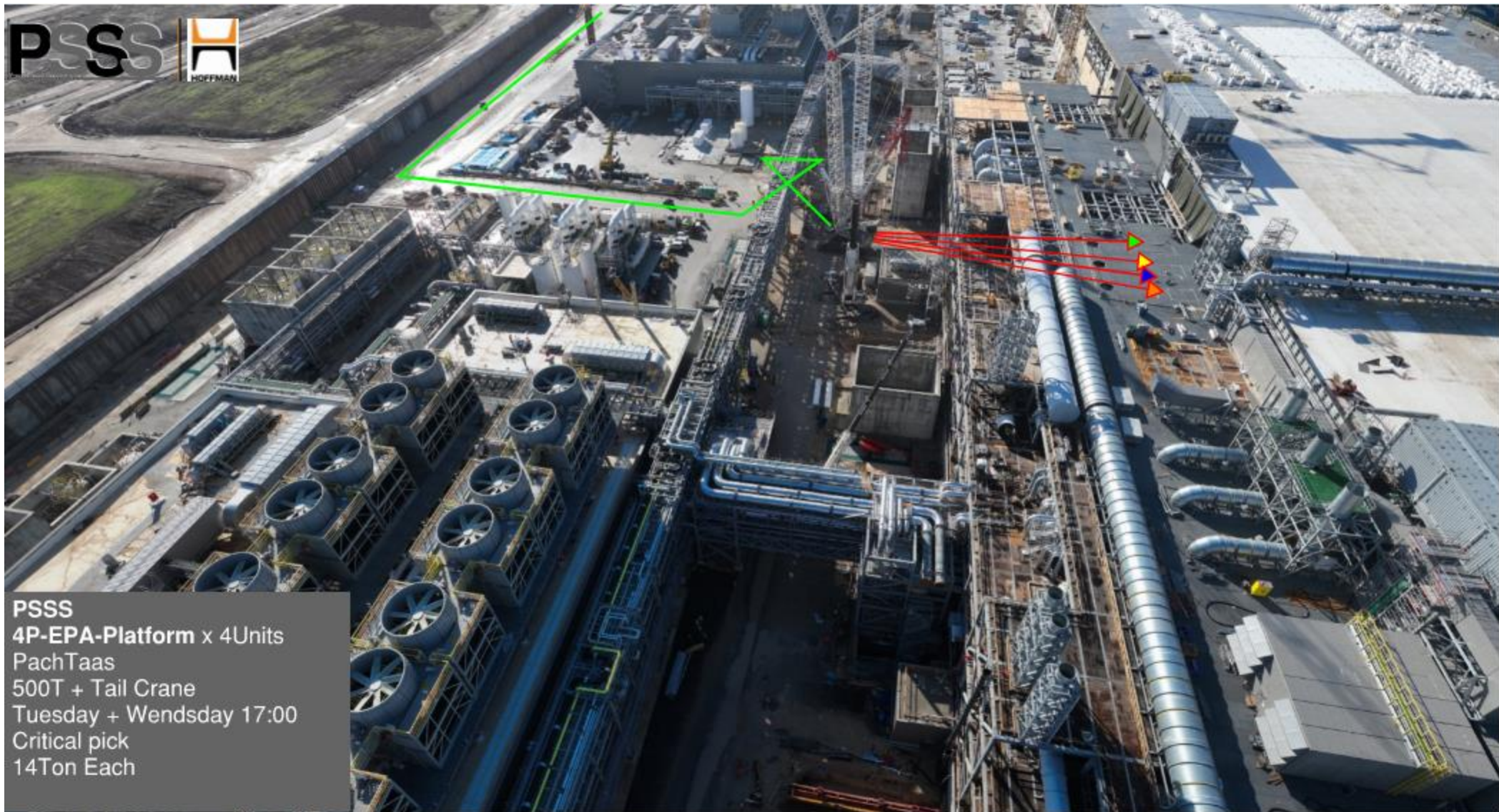


PSSS Pressure Tests



Utility Level
1YA

PSSS Roof
2SA



PSSS
4P-EPA-Platform x 4Units
PachTaas
500T + Tail Crane
Tuesday + Wendsday 17:00
Critical pick
14Ton Each

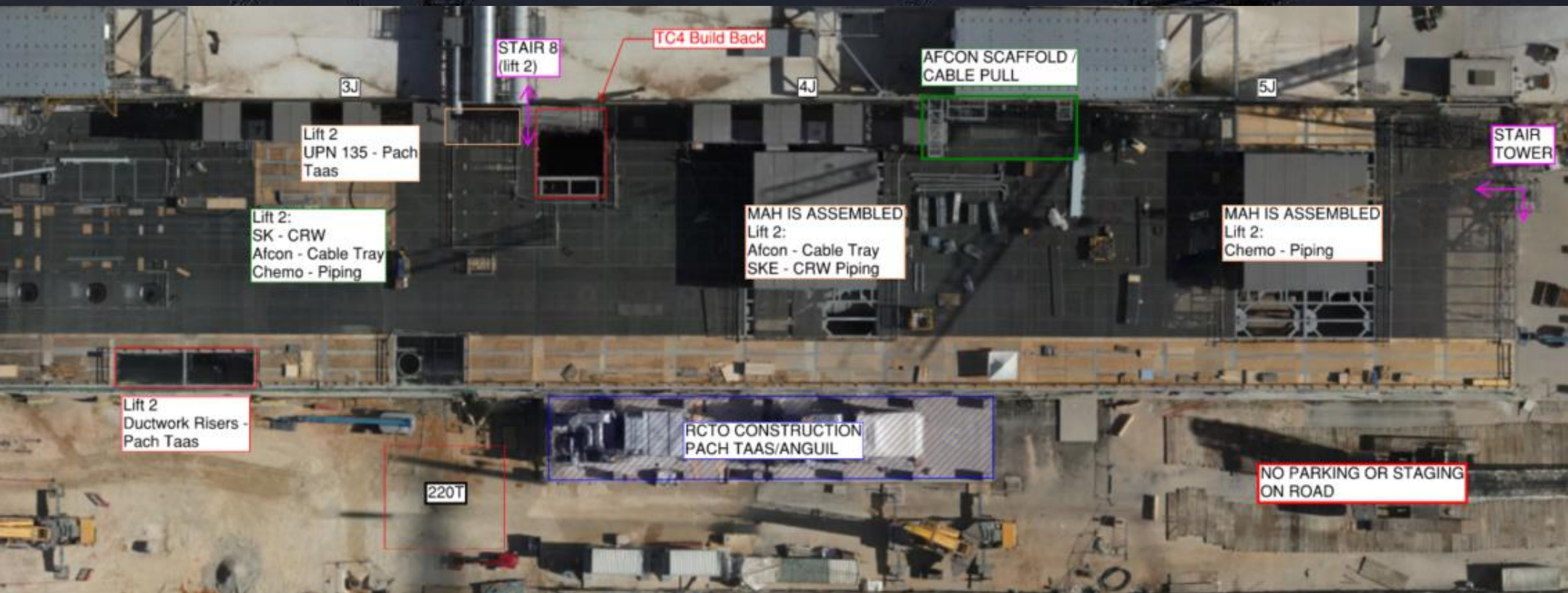


WJG 01J, 02J LIFT 2 & 3





WJG 03J, 04J, 05J LIFT 2 & 3

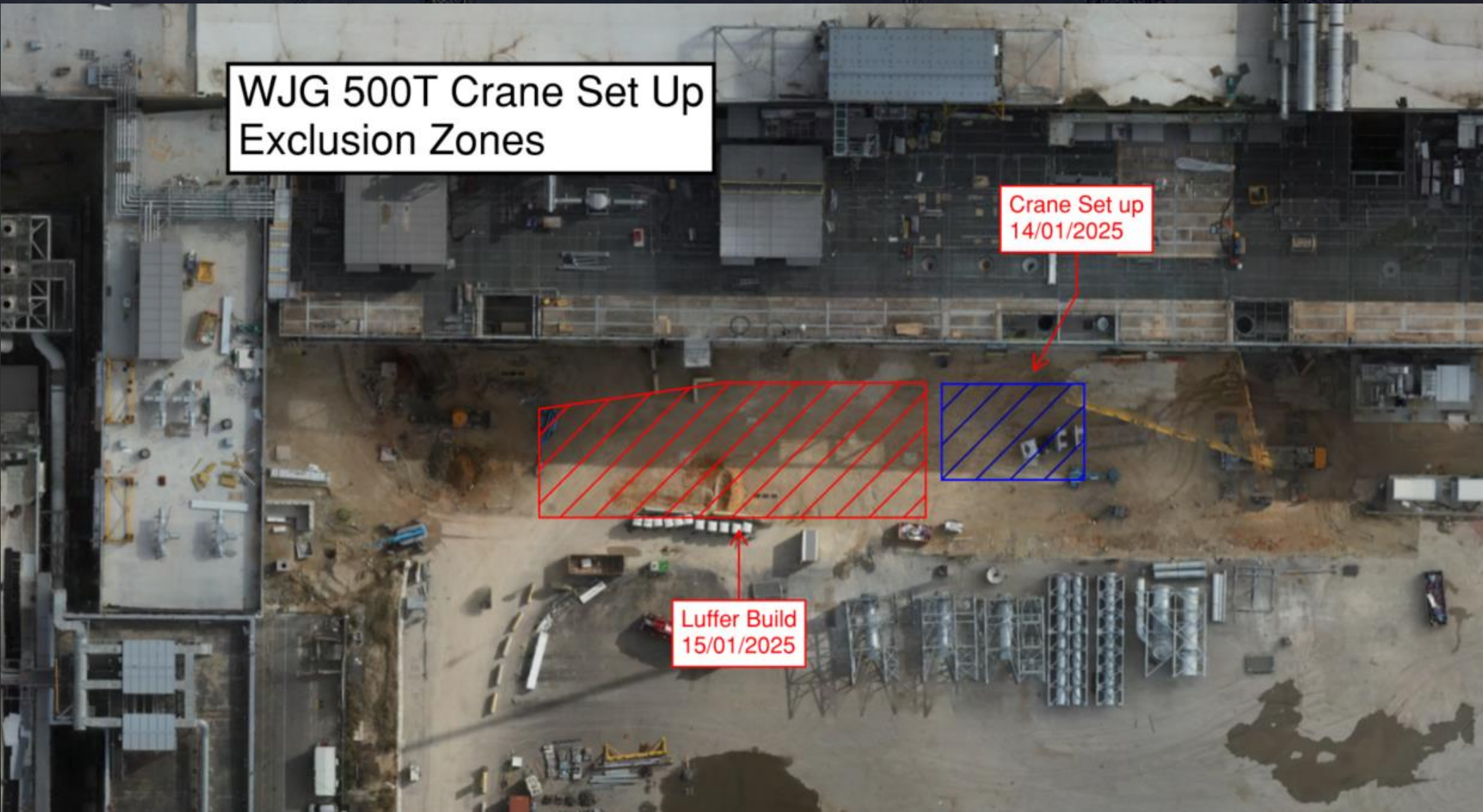


WJG 500T Crane Build

WJG 500T Crane Set Up
Exclusion Zones

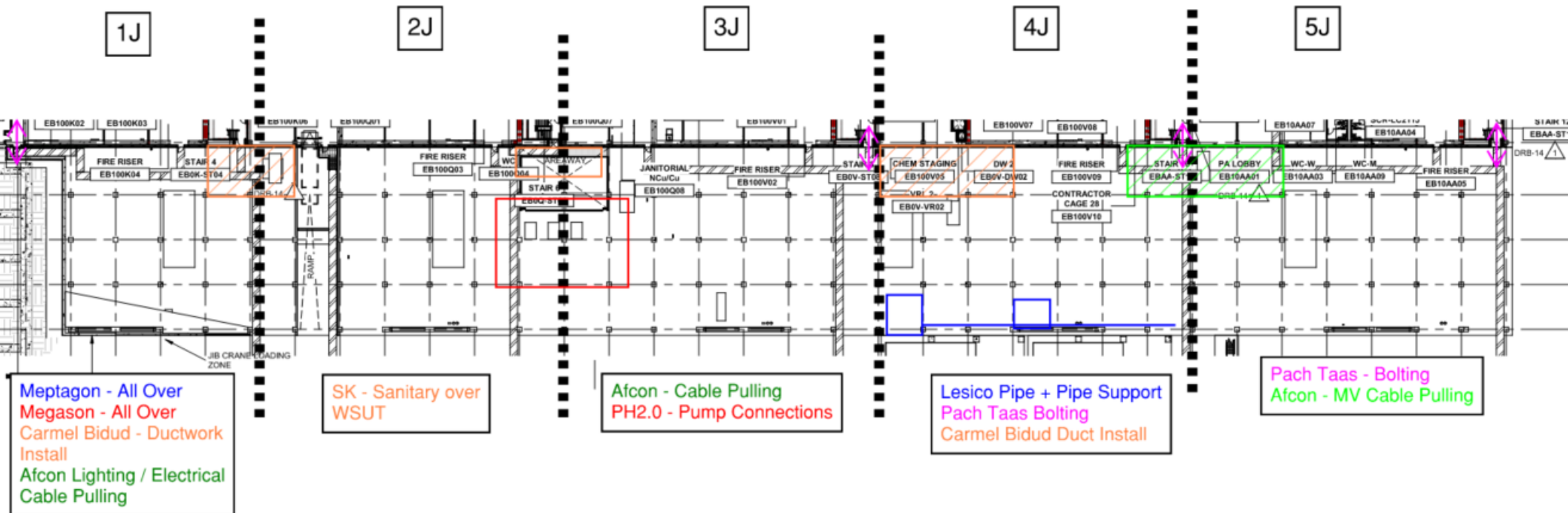
Crane Set up
14/01/2025

Luffer Build
15/01/2025

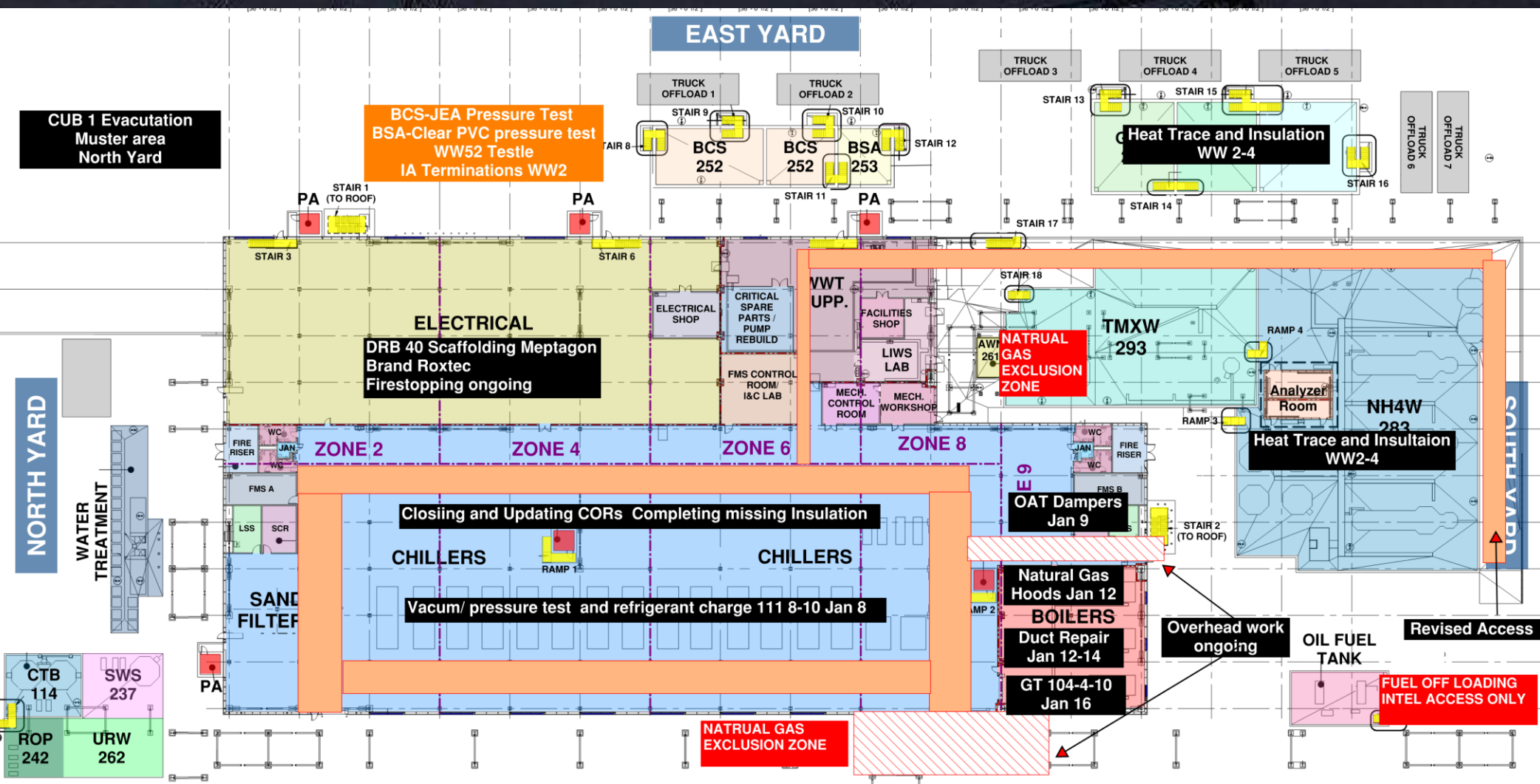




WJG UTILITY LEVEL BUILD OUT



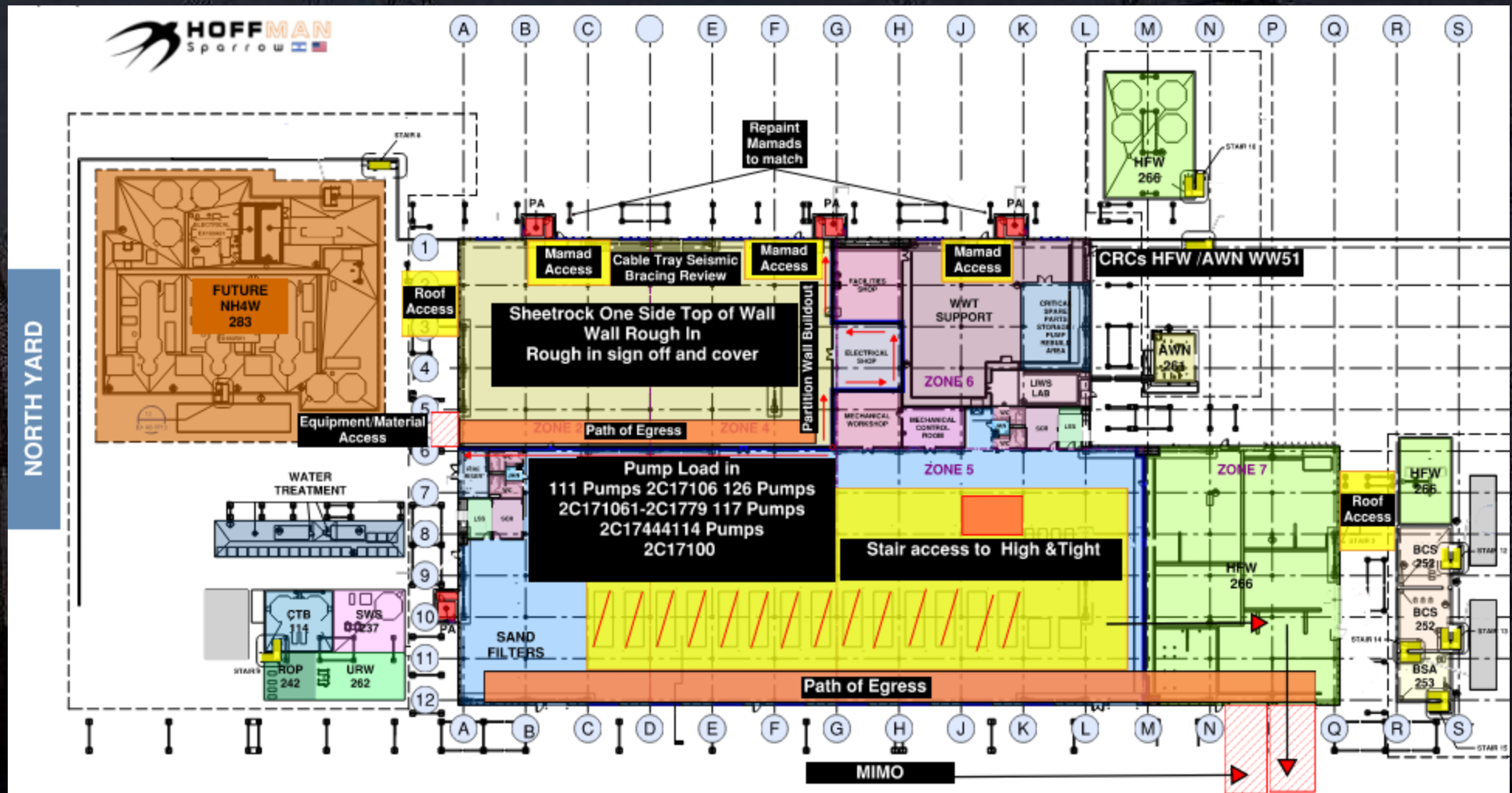
CUB 1



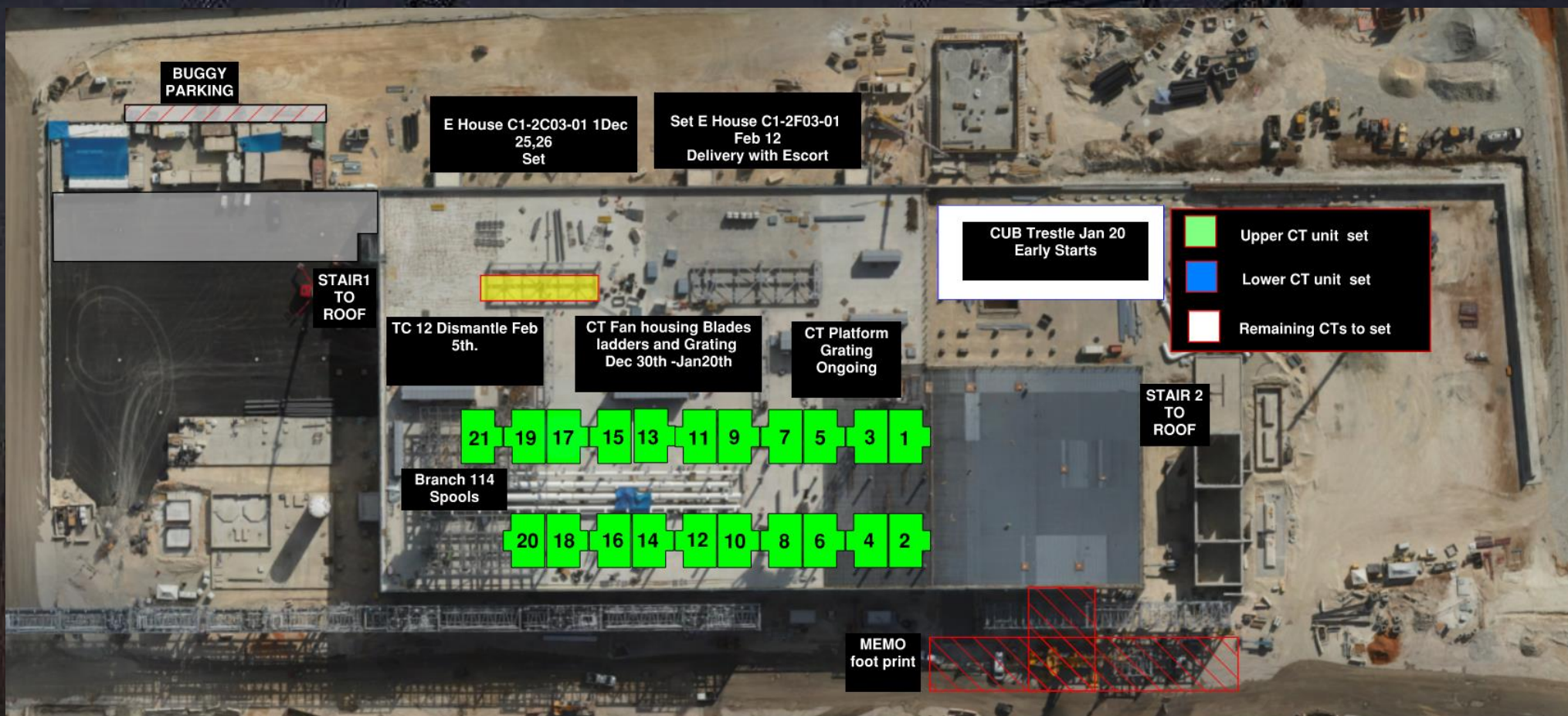
CUB 1 – EXTERIOR/ROOF



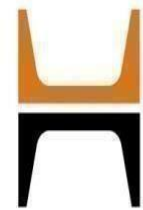
CUB 2- Load in ,H&T, Framing and Sheetrock



CUB 2 – EXTERIOR/ROOF







HOFFMAN CONSTRUCTION COMPANY



HOFFMAN
Sparrow



G.I.S- scaffolding
dismantling
start - January 15th 2025

T82A+B
complete dissemble

T81-80
disassembling cable trays
Internal catwalks

T82A

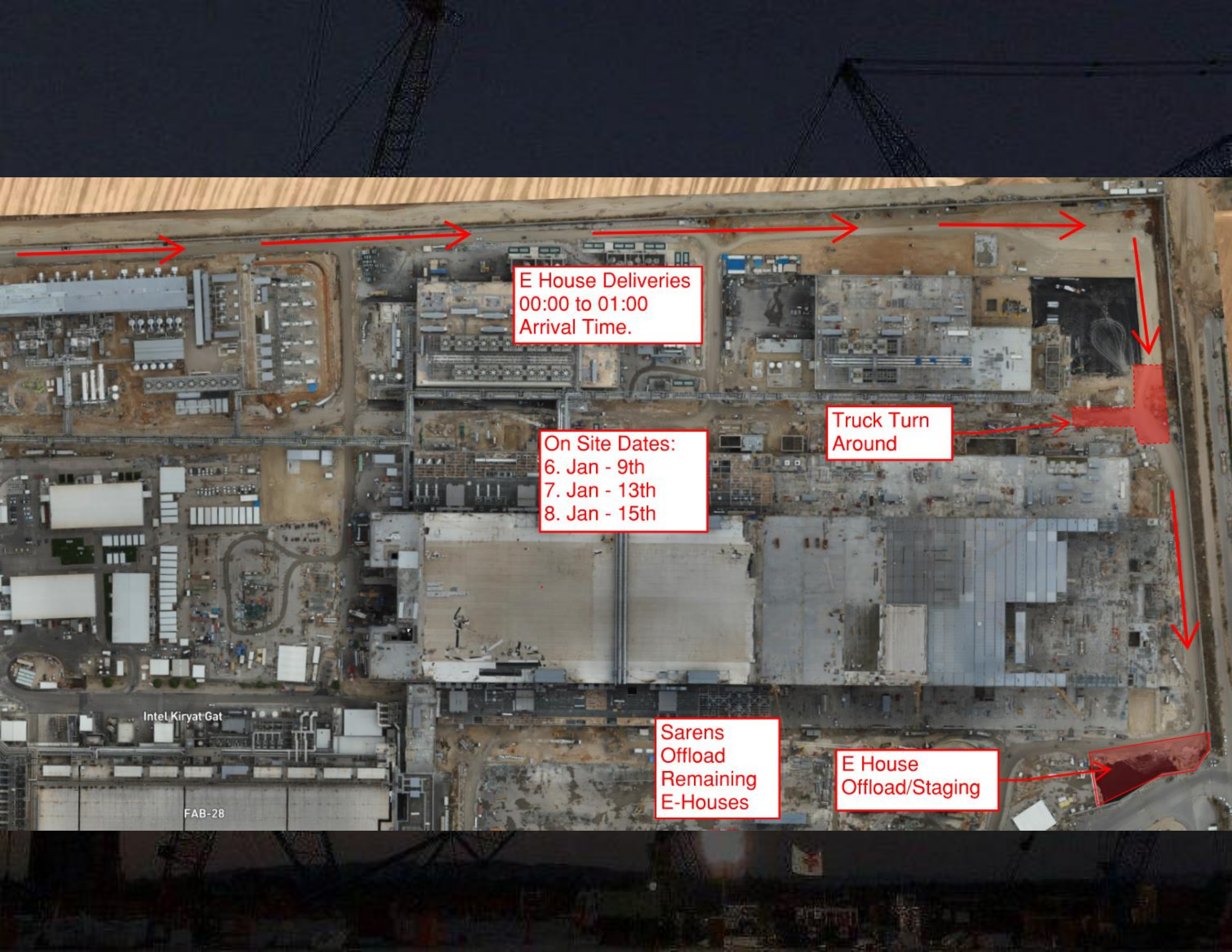
T82B

T81

T80

T84

T84 complete dissemble



E House Deliveries
00:00 to 01:00
Arrival Time.

On Site Dates:
6. Jan - 9th
7. Jan - 13th
8. Jan - 15th

Truck Turn
Around

Intel Kiryat Gat

FAB-28

Sarens
Offload
Remaining
E-Houses

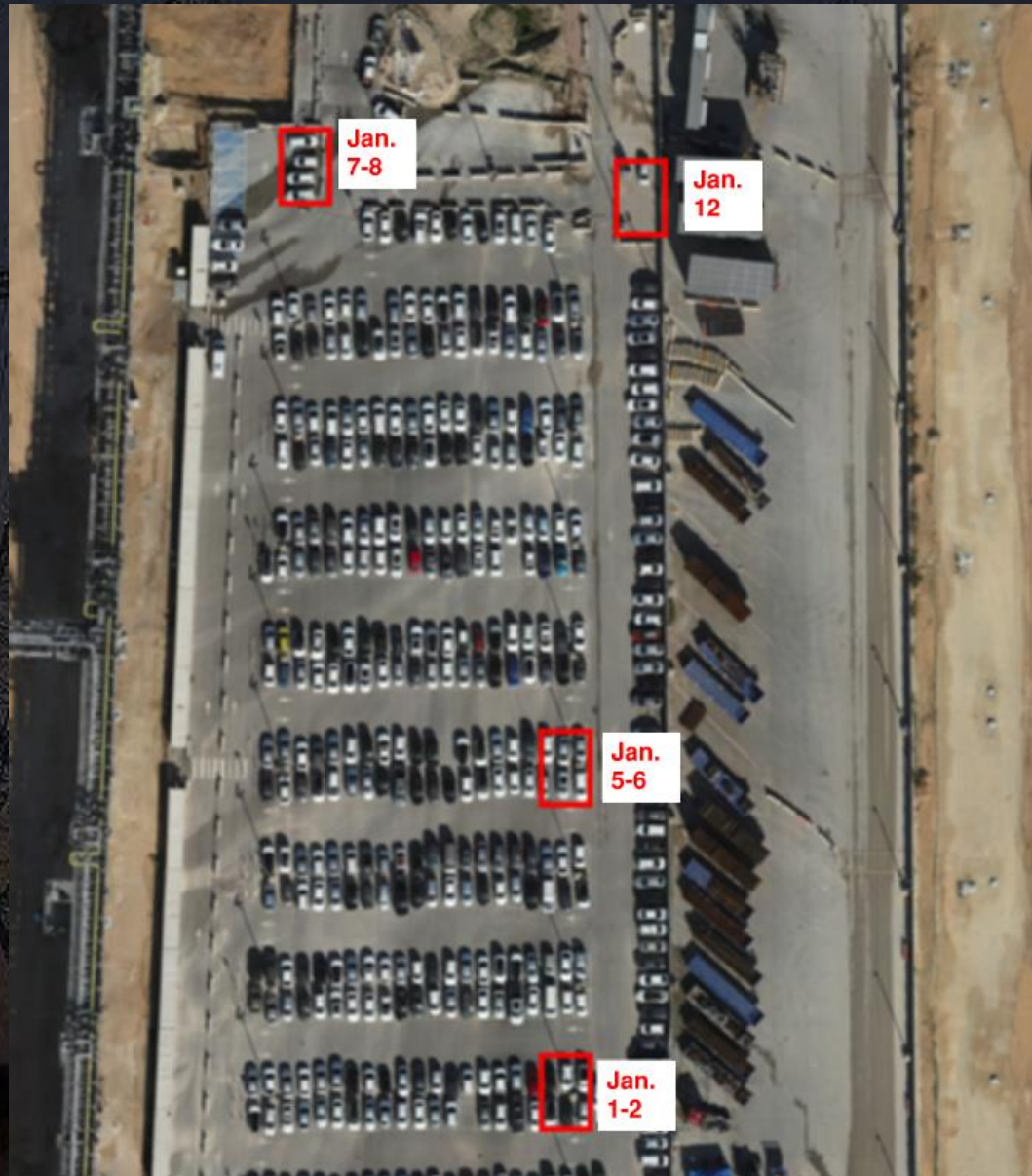
E House
Offload/Staging

Daily Coordination Meeting

Site Logistics

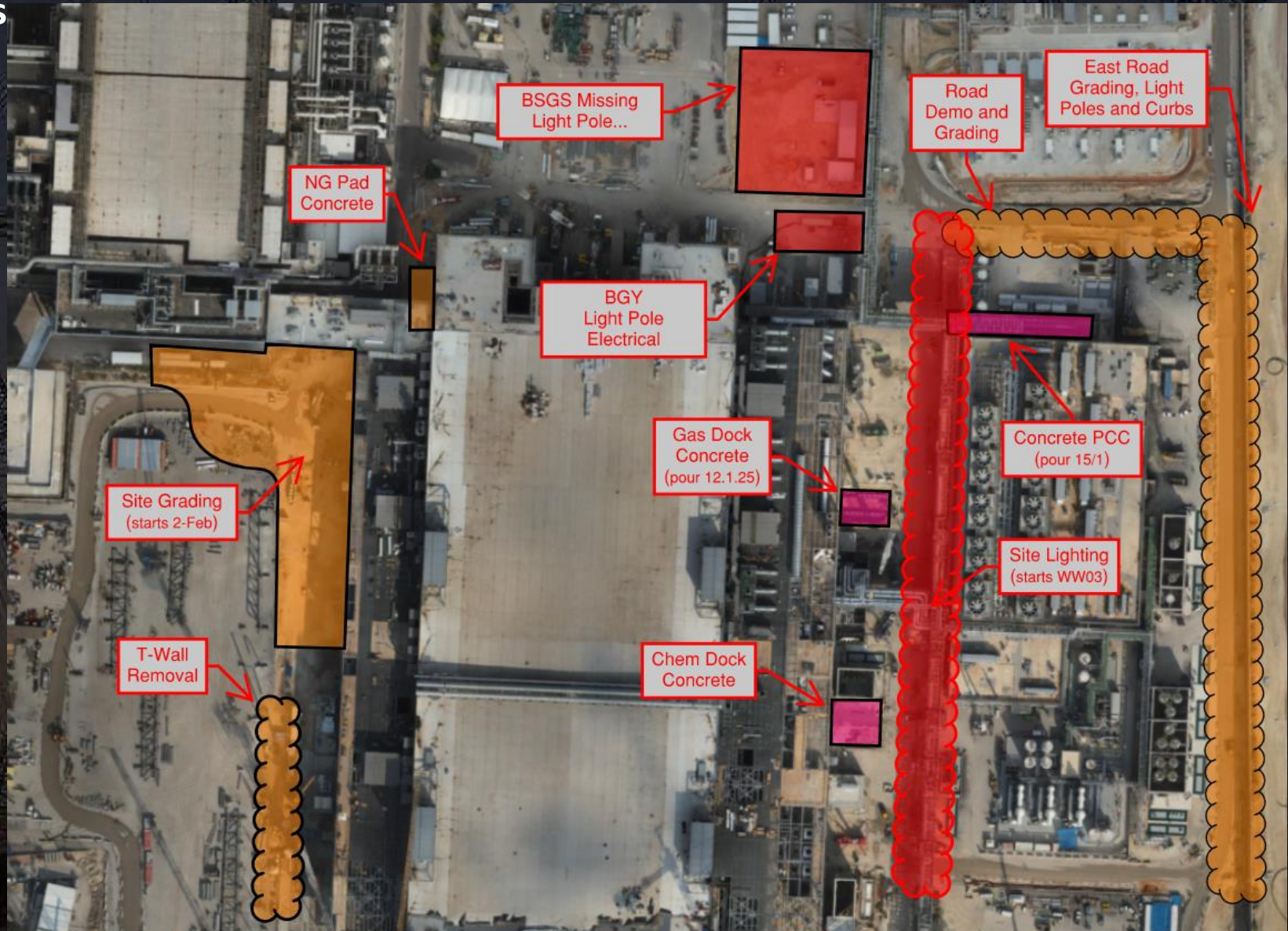
600 Car Park

Boring



Daily Coordination Meeting

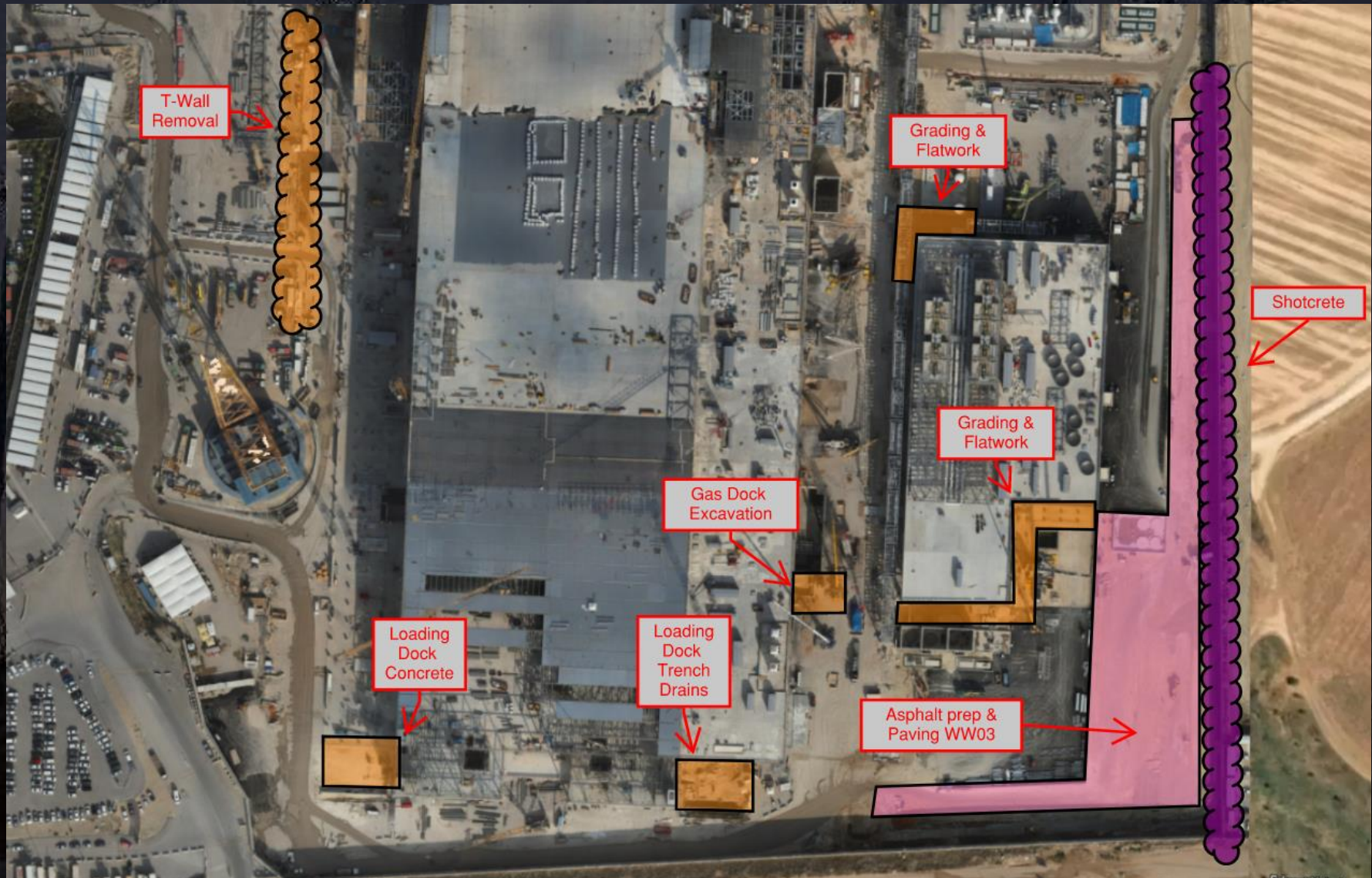
Site Logistics North



Daily Coordination Meeting

Site Logistics

South

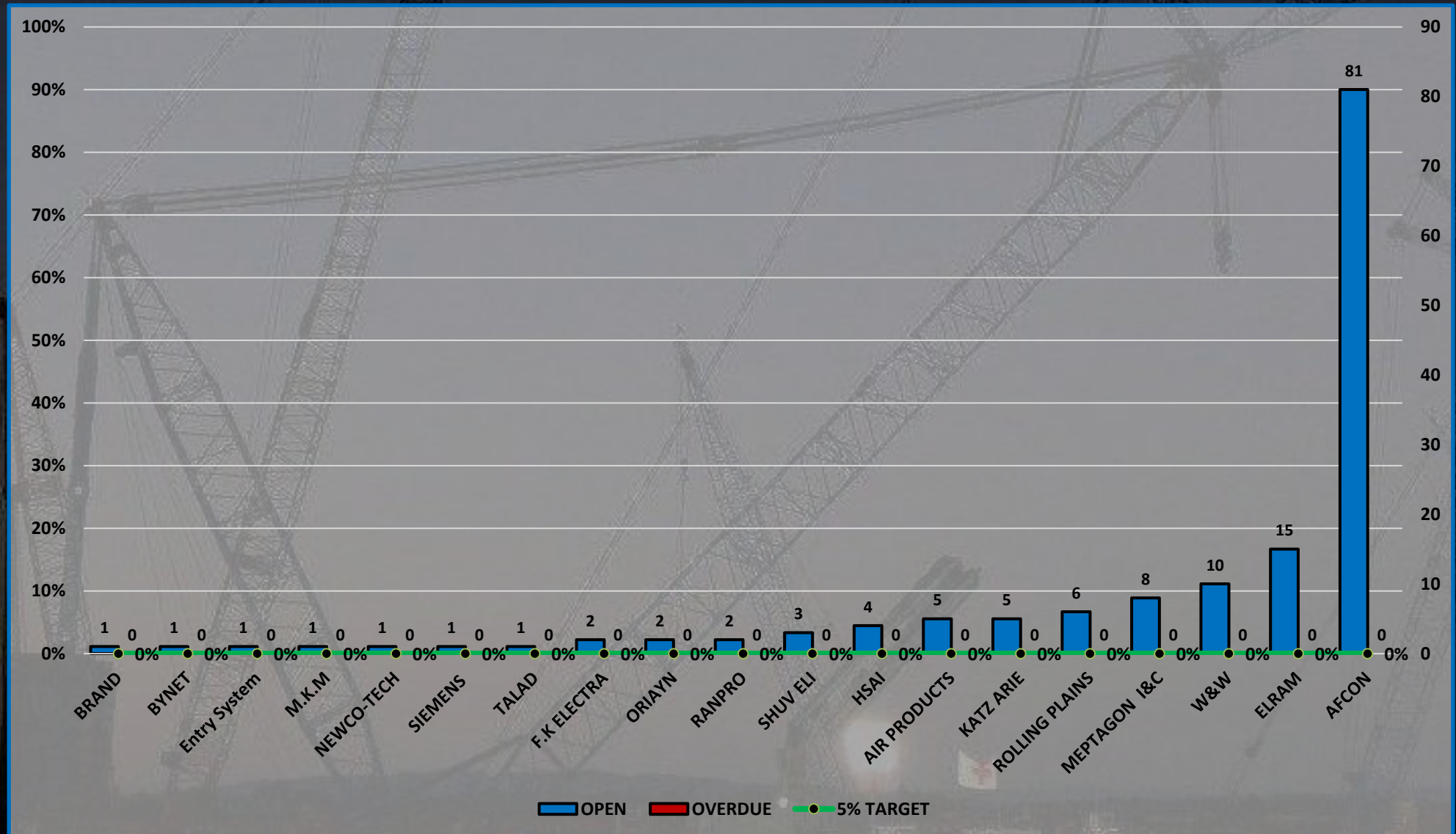




Overdues/Opens By Subcontractor WW3 (5% Target)

Open – 649 CORs

Overdue – 200 CORs

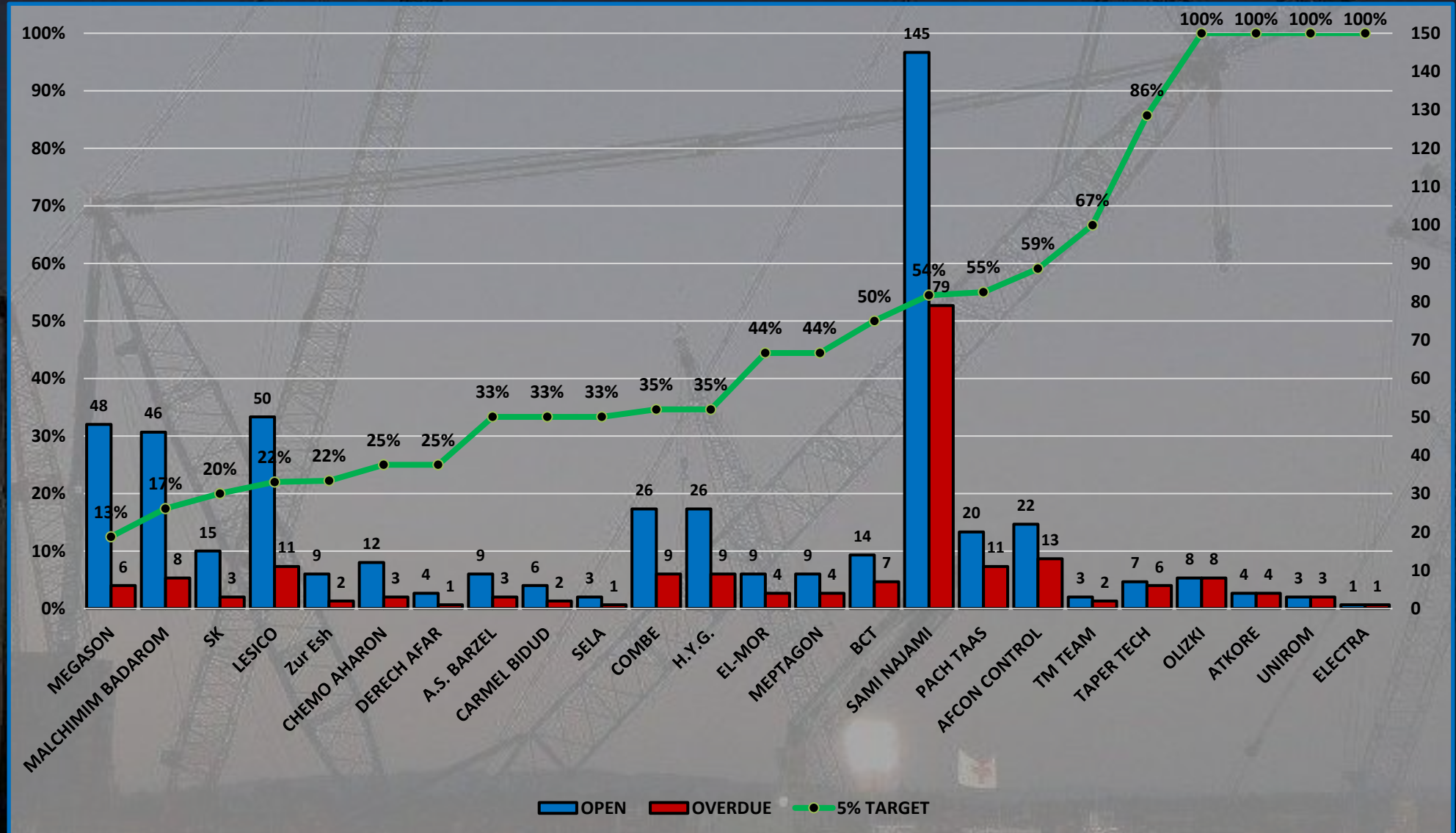




Overdues/Opens By Subcontractor WW3 (5% Target)

Open – 649 CORs

Overdue – 200 CORs



Chemical Safety

- More chemicals are being used on site. Please make sure that you have submitted the SDSs for ALL chemicals that your company is bringing on site to safety.
 - This is not your submittal for use of the product against spec, but instead is for us to notify Intel of new potential waste streams, and is added to the project's database of chemicals for environmental and health needs.
- Each worker that is using the chemical must have reviewed the SDS first.
- SDSs must be accessible to those in the field.
- If someone is exposed to a chemical, get the SDS on your way to the nurse.

Daily Coordination Meeting



14:00 Sign In