

Daily Coordination Meeting



14:00 Sign In

Daily Coordination Meeting

General Topics:

- Back to Basics – Proper Area Assessment

CSL01.12



HOFFMAN CONSTRUCTION COMPANY



UTILITY LEVEL

TOOL TOWERS / NO STORAGE FROM March 16



CHEMO / AFCON e



HOFFMAN CONSTRUCTION COMPANY



UTILITY LEVEL

TOOL TOWERS / NO STORAGE FROM March 16



MEGASON



HOFFMAN CONSTRUCTION COMPANY



UTILITY LEVEL

TOOL TOWERS / NO STORAGE FROM March 16

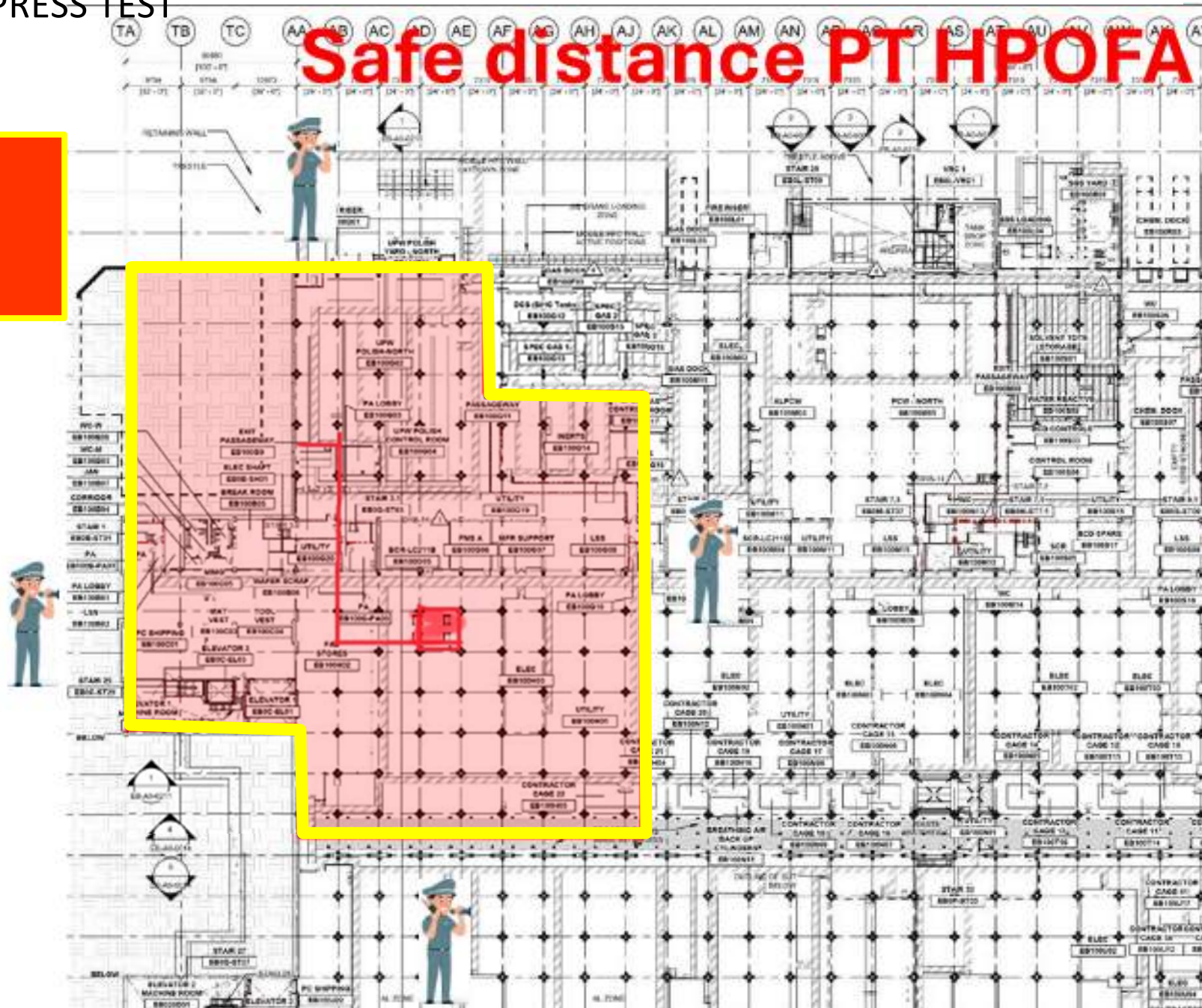


MEGASON / AFCON e

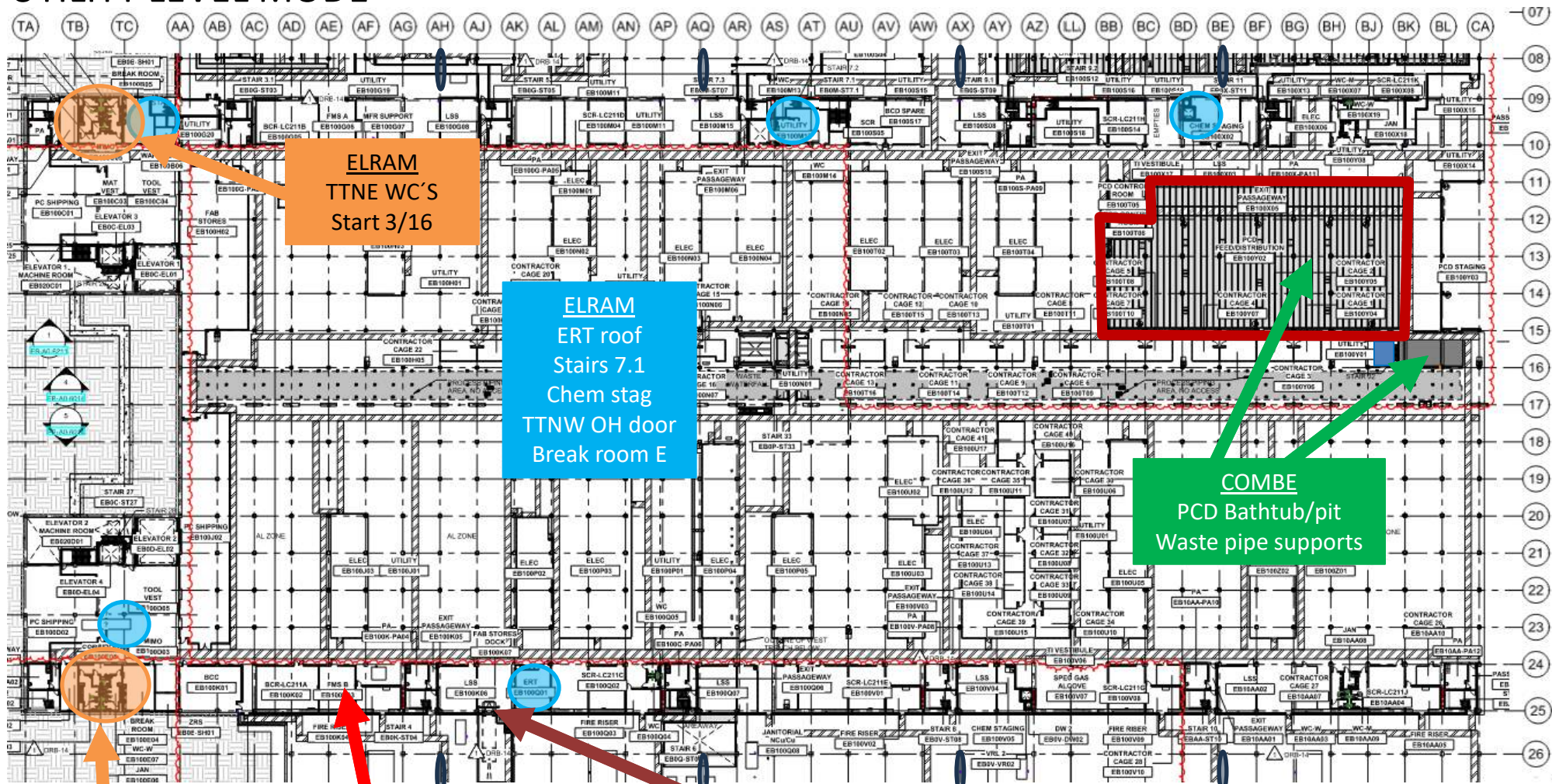


Safe distance PT HPOFA

Lesico
HPOFA test
3/12
From 20:00
till 00:00



UTILITY LEVEL MOD1



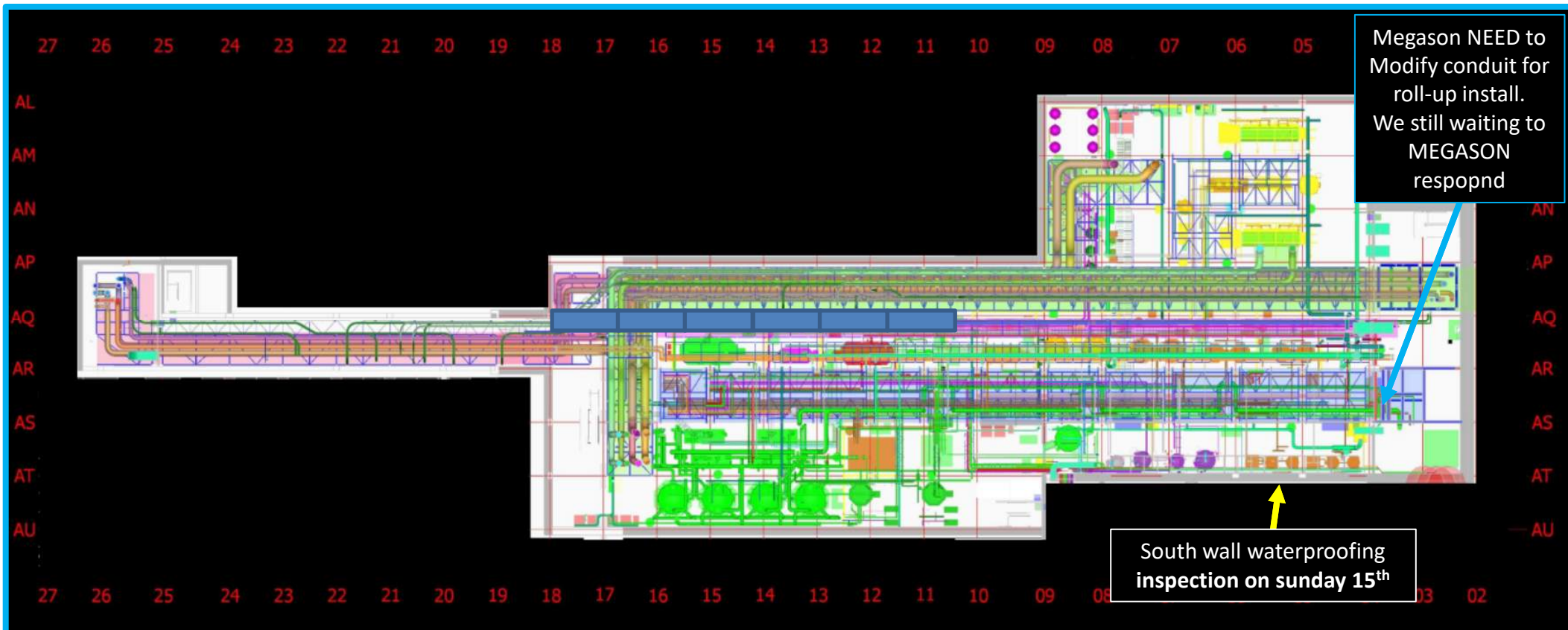
SamiN
TTNW WC'S
pressure test
ongoing

HYG
FMS B
3/16

SHEARIM
Need start
date !?



SUT 38.1 LEVEL

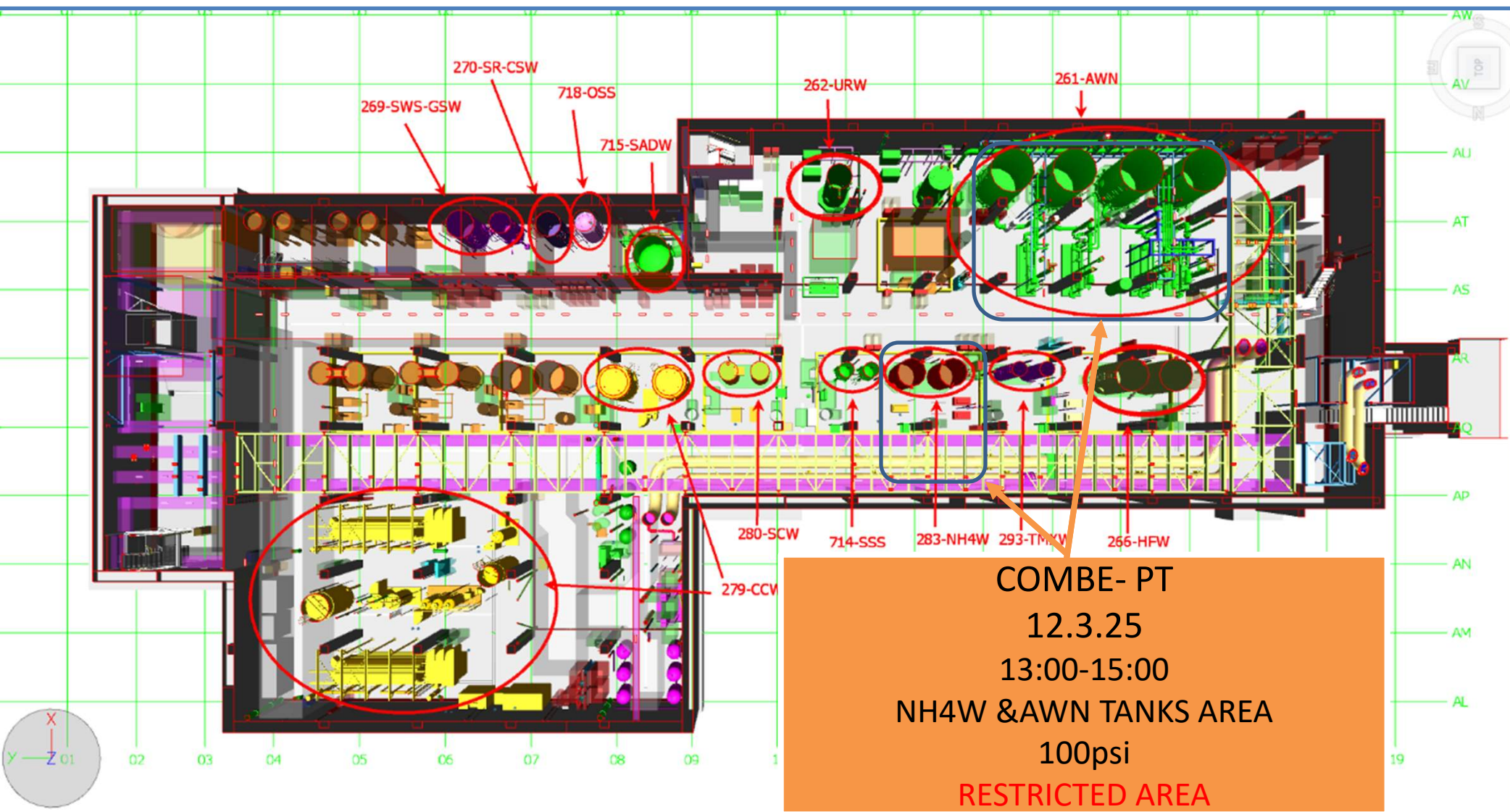


• Rack 6

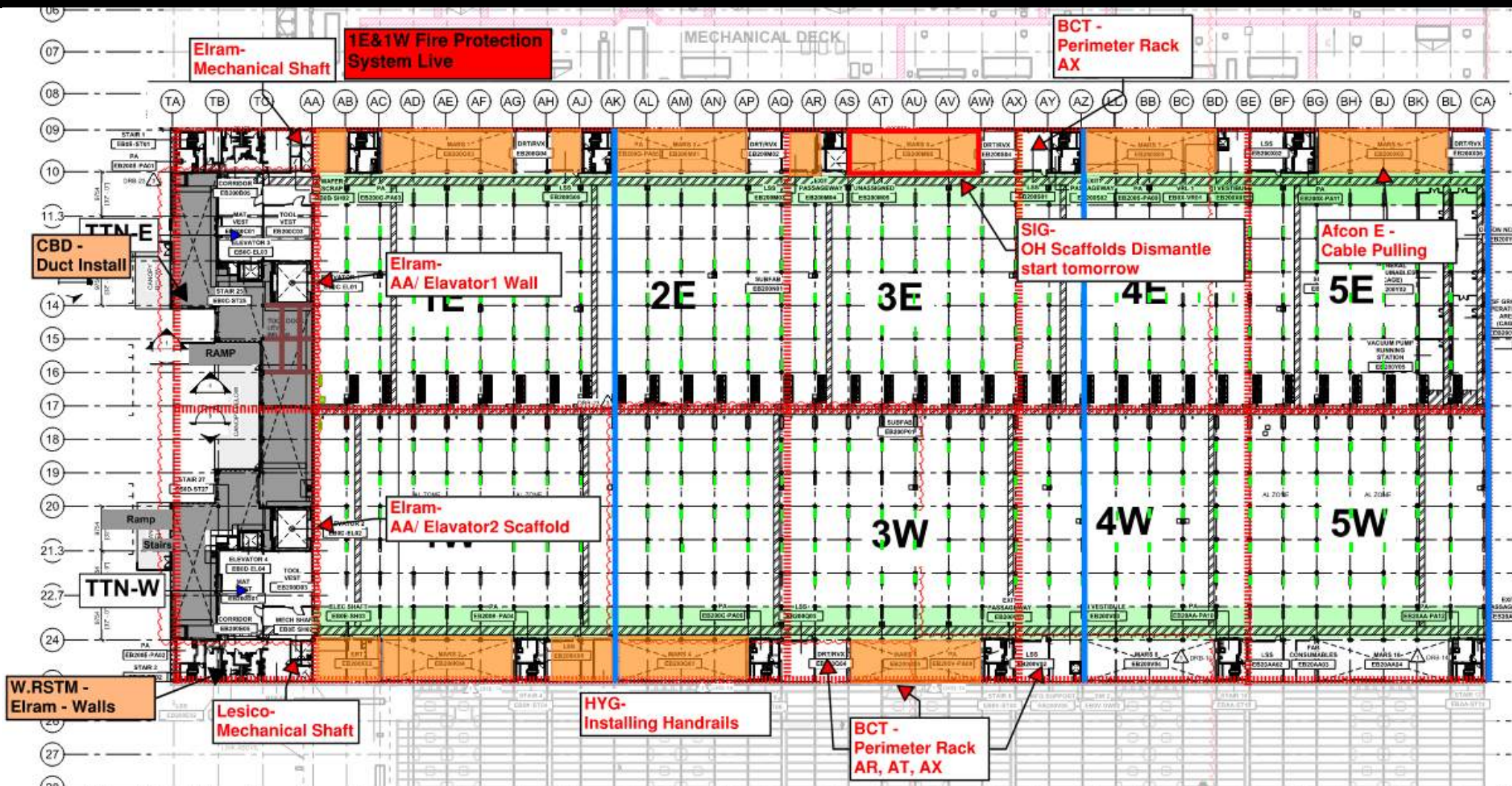
- HSAI start curb pour sow, pour tomorrow

Combe- Rack 4 Upper
M#4.7 – 10/3/25
ON GOING

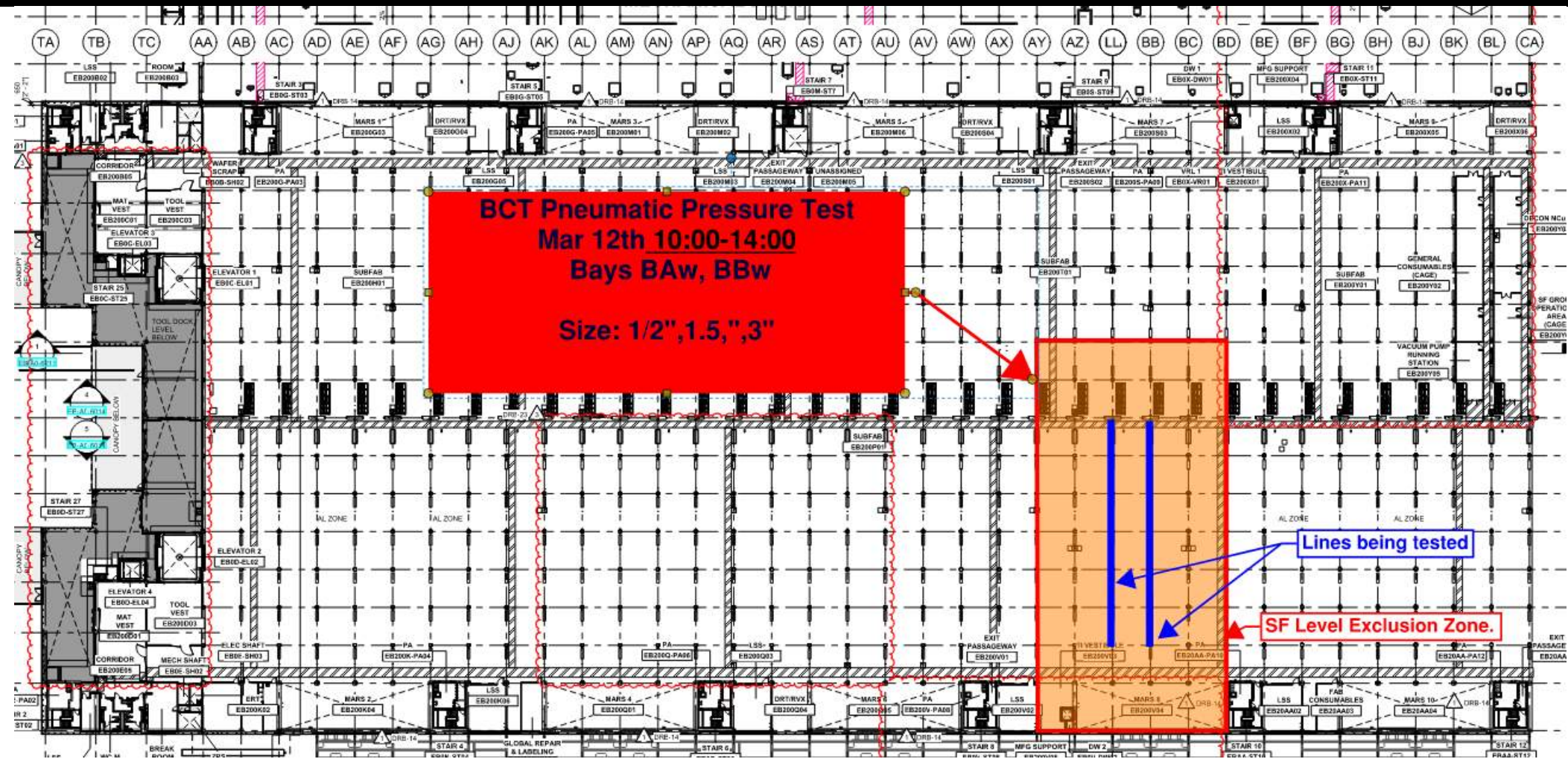
Mep- Rack 2
M#10&11 Piping
WELDING



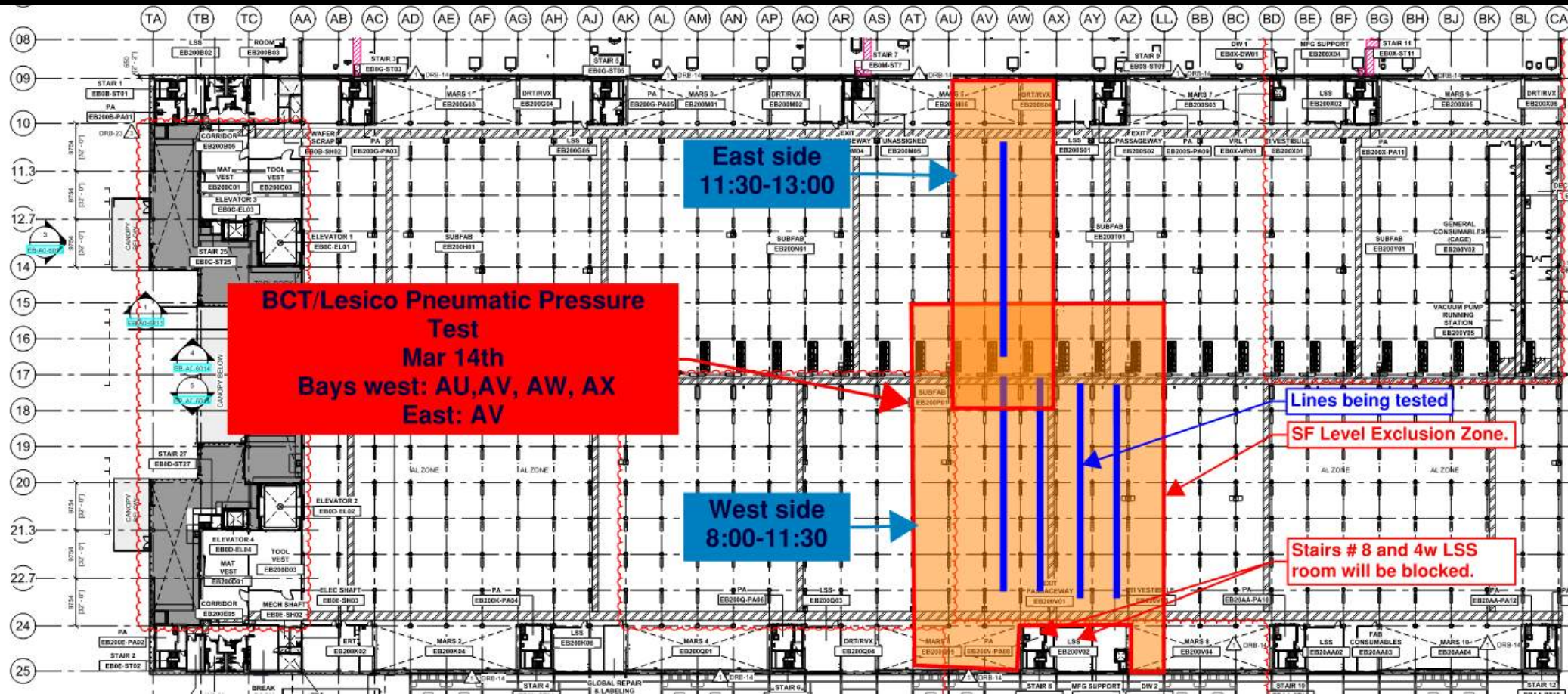
SUBFAB BUILDOUT MOD 1



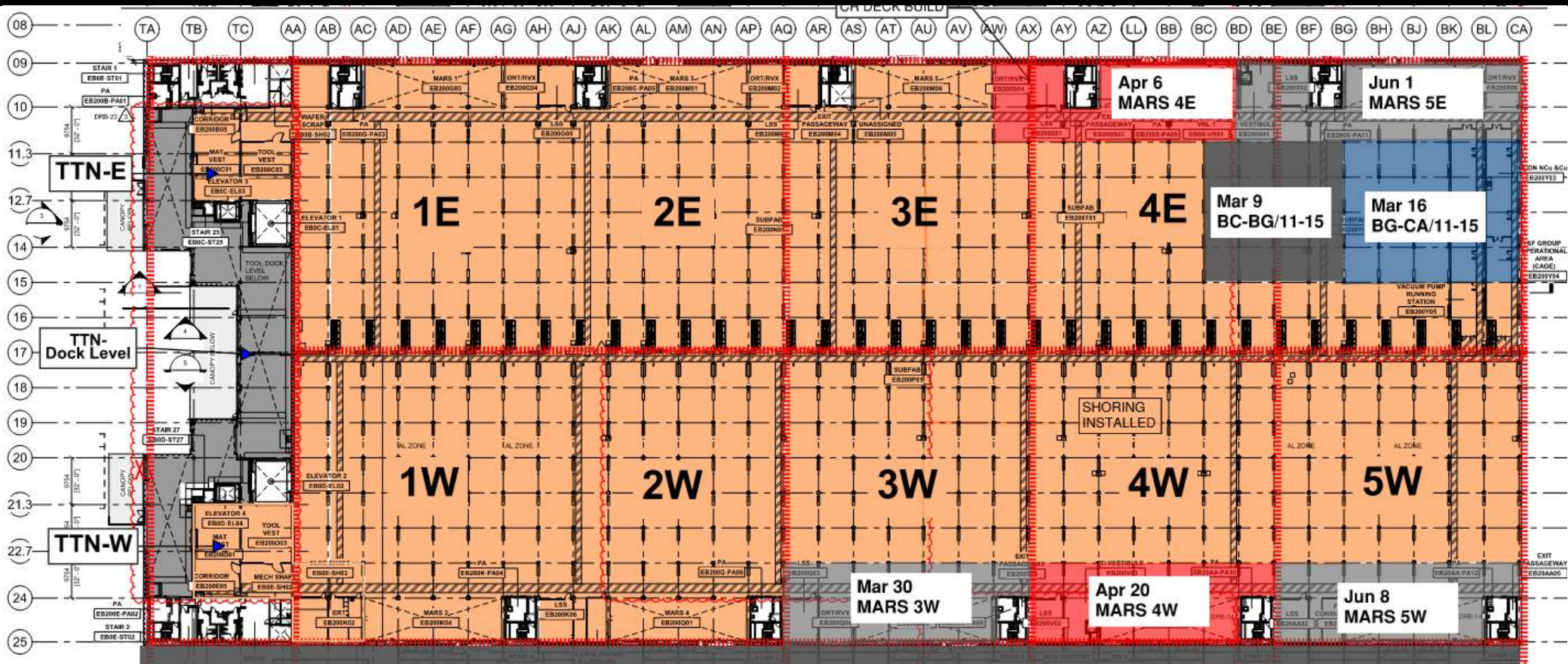
BCT Pneumatic Pressure Test
Mar 12th 10:00-14:00
Bays BAw, BBw
Size: 1/2", 1.5", 3"



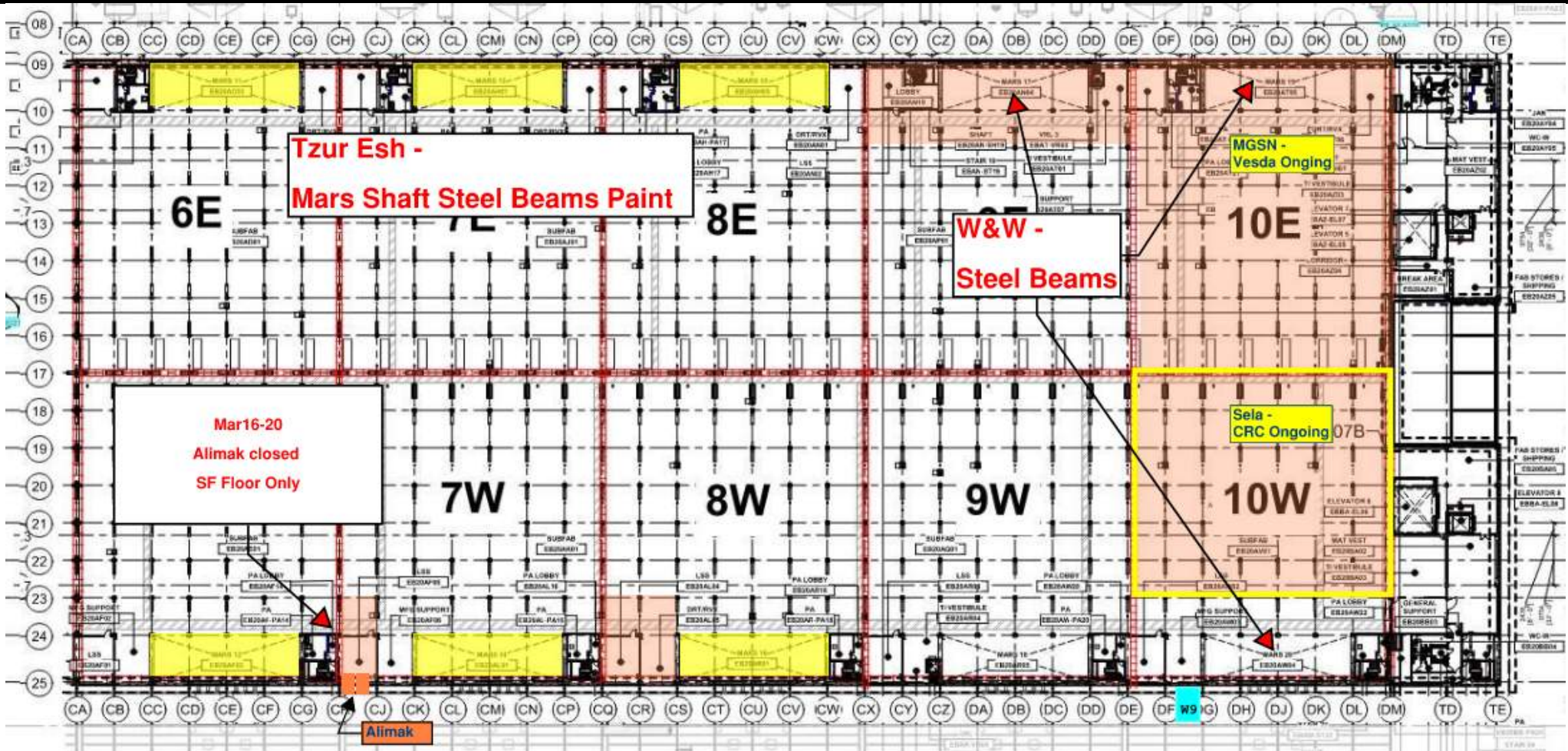
BCT Pressure Test Friday

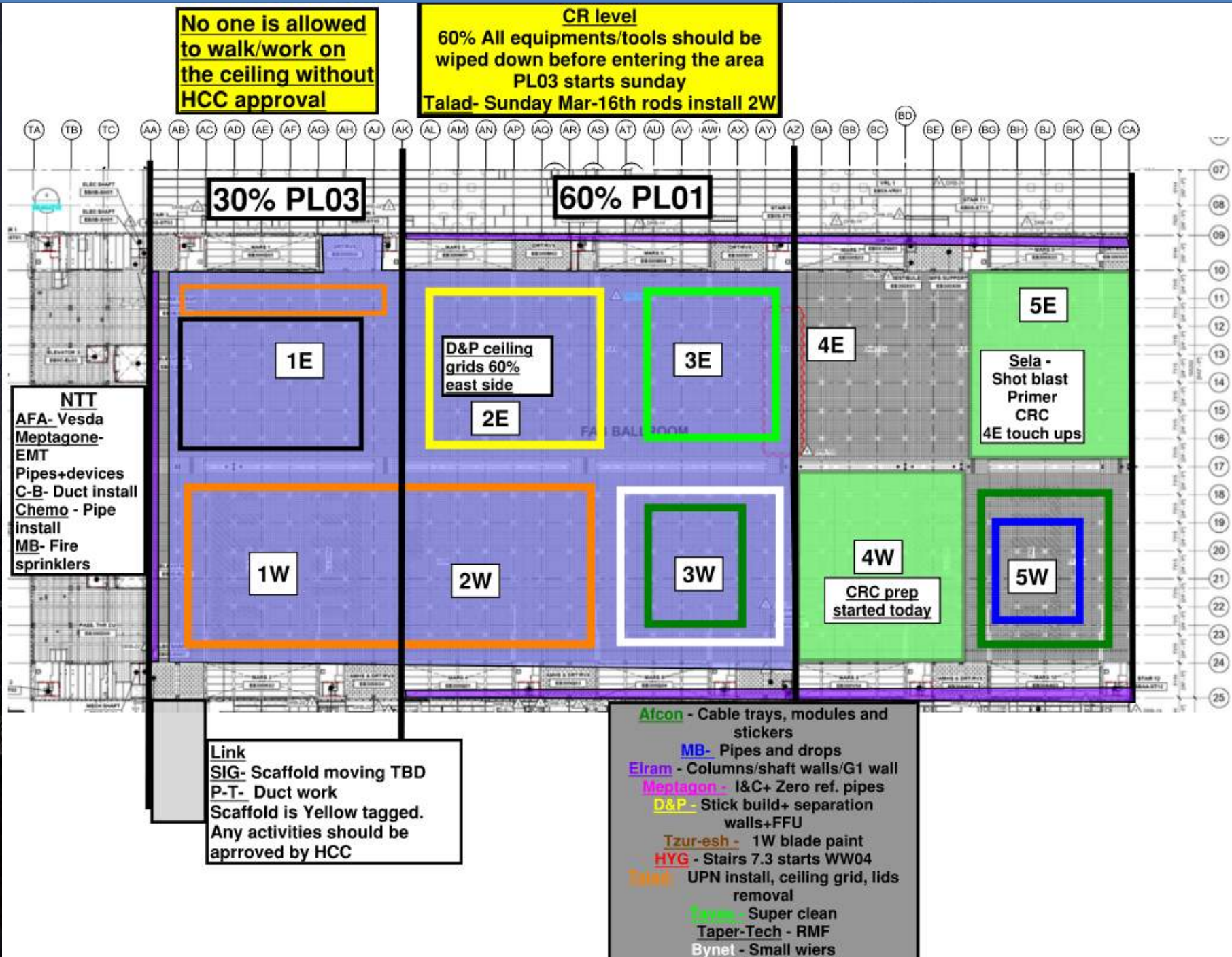


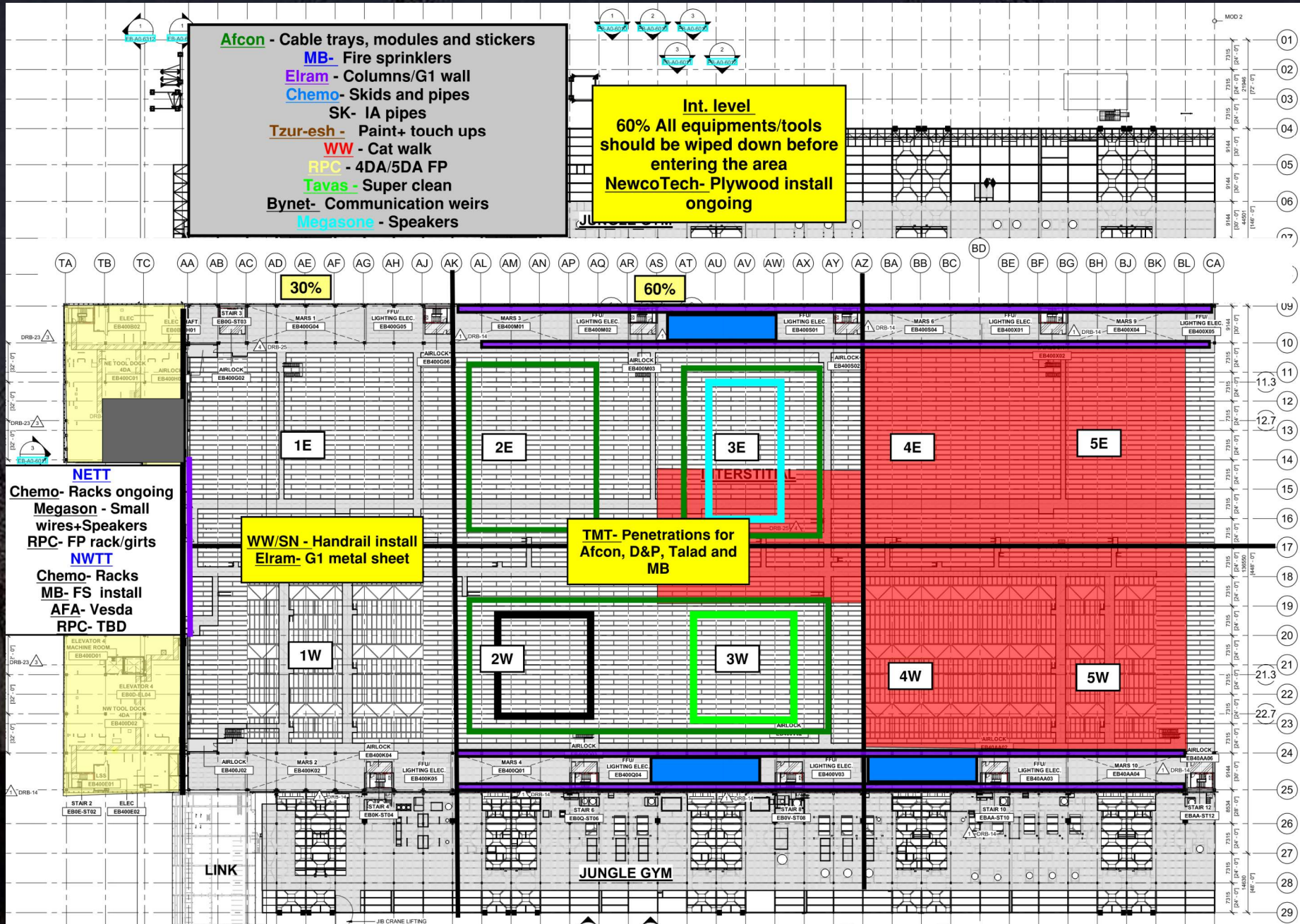
SUBFAB CRC TOPCOAT

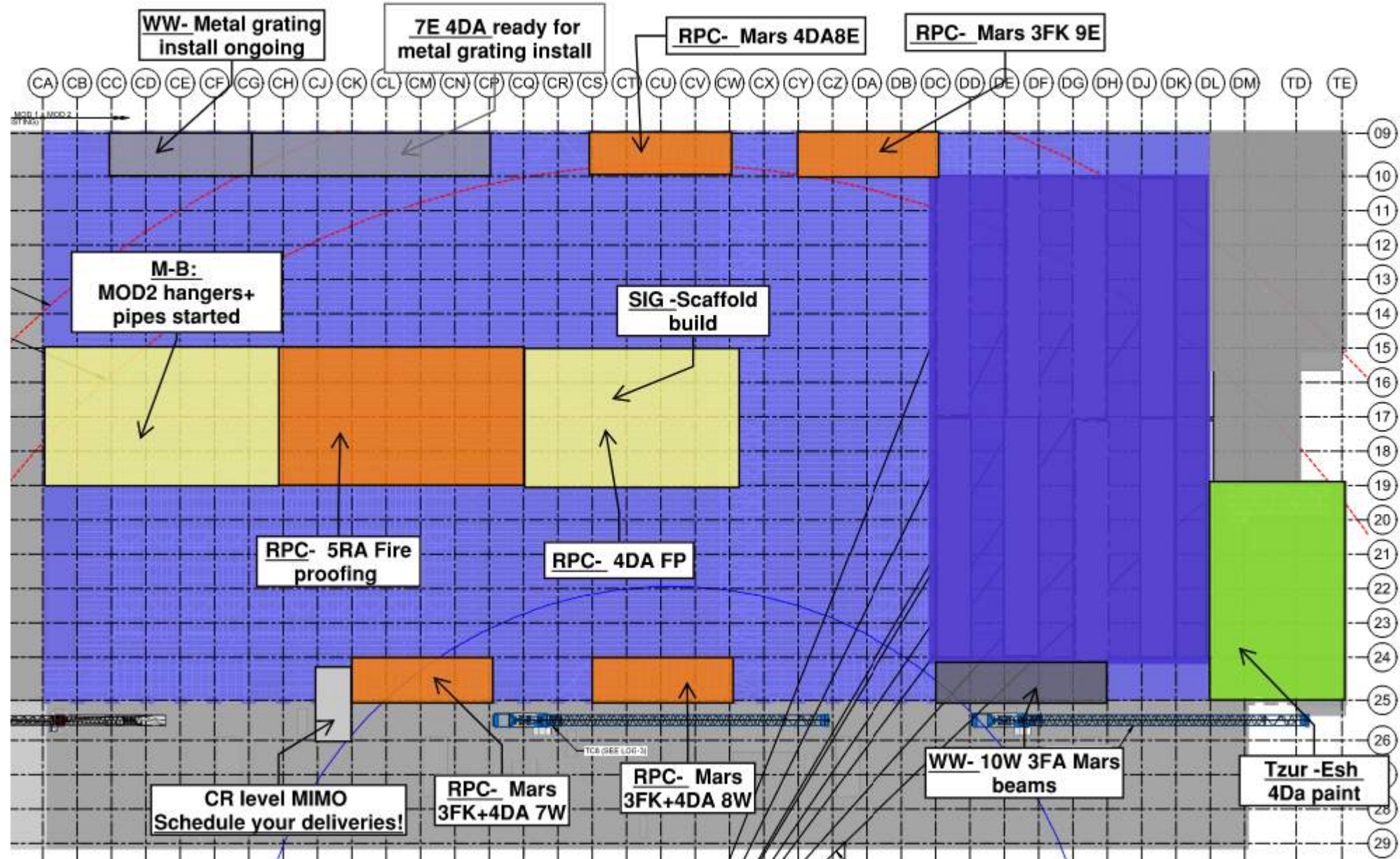


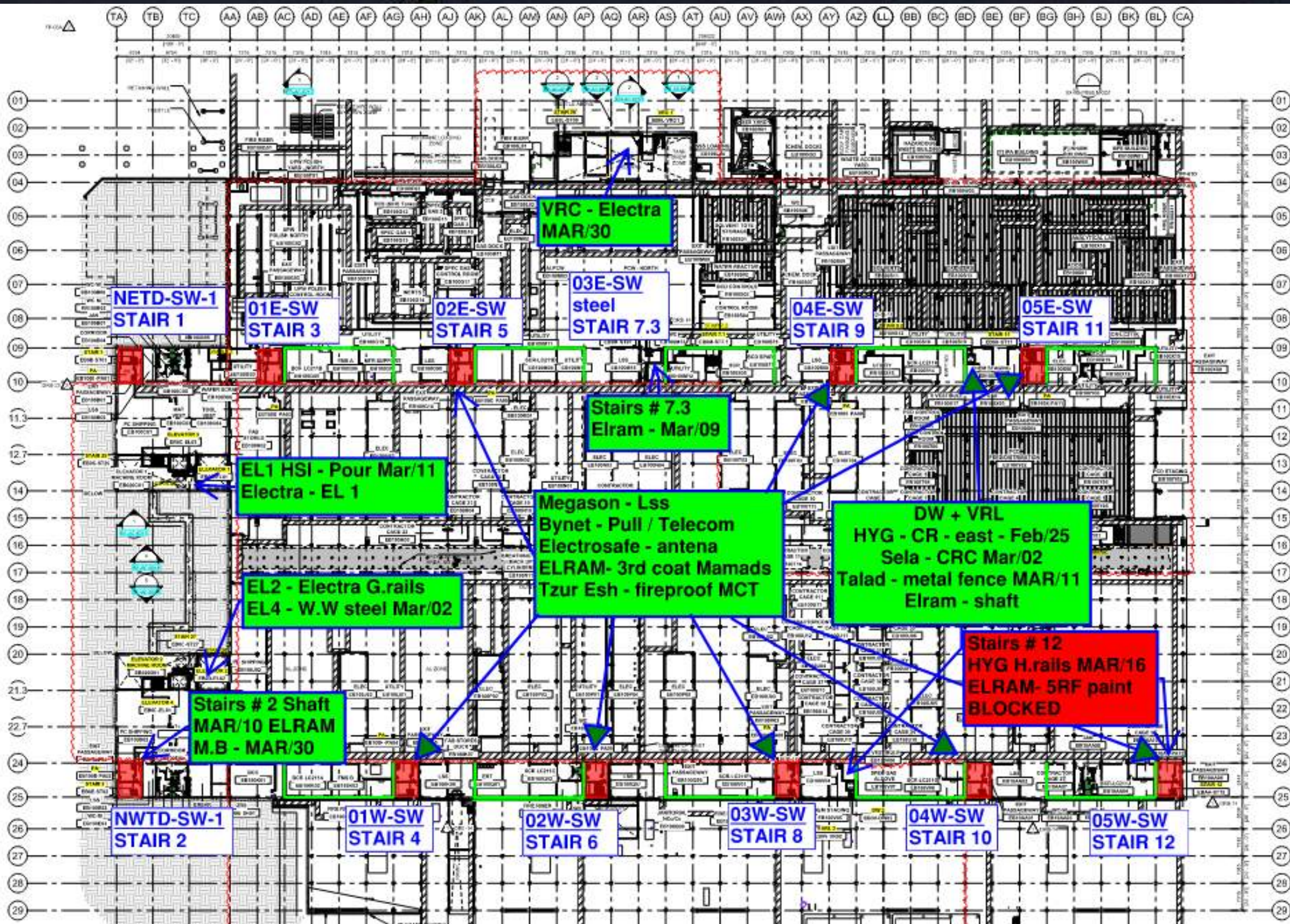
SUBFAB BUILDOUT MOD2



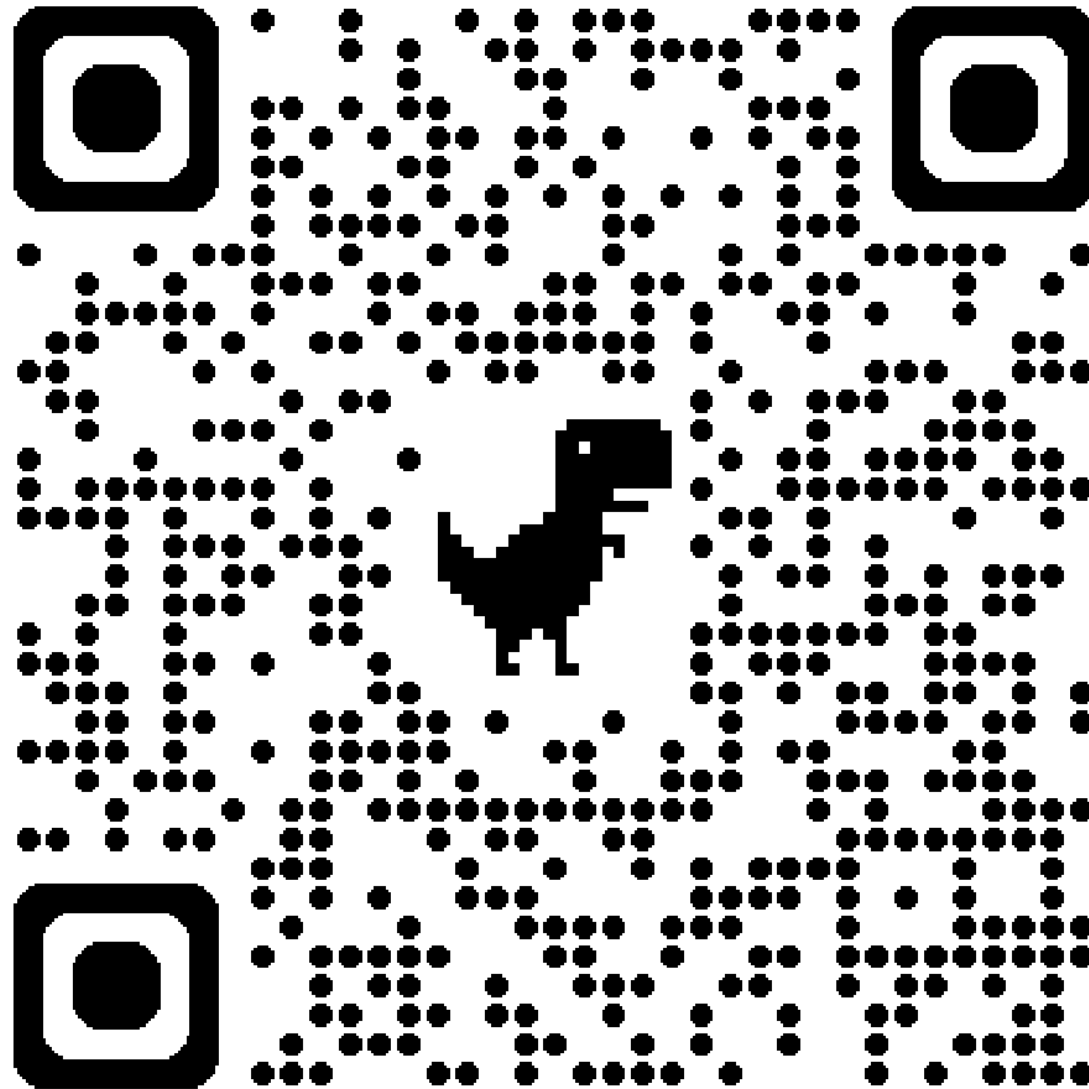




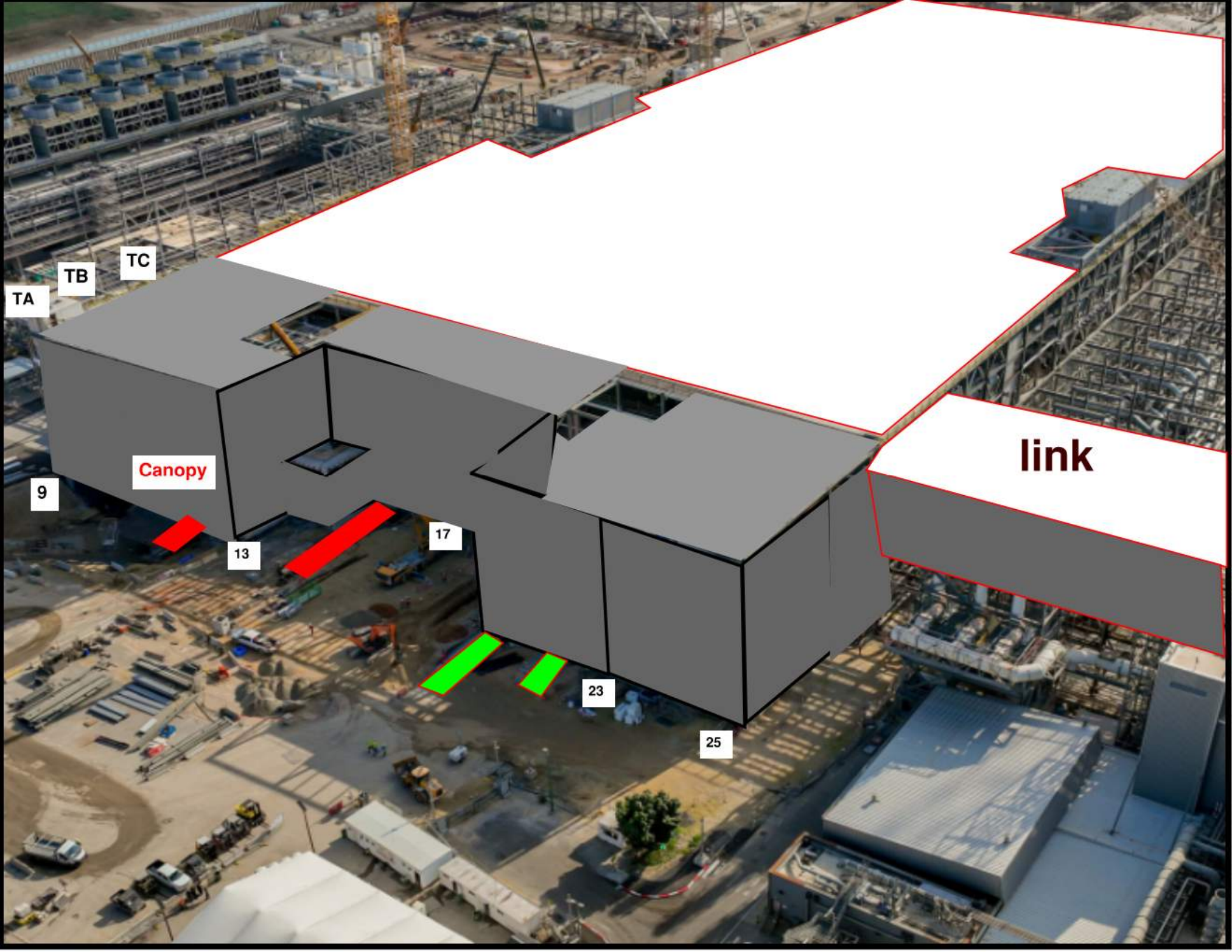




Siding Penetration Request Form



Subcontractor must fill out and submit all required cells in order to get a penetration cut through the siding.



TA

TB

TC

Canopy

9

13

17

23

25

link



MOD 2 EASTSIDE GIRTS/SIDING

| | | | | | | | | | | |
|---------------|---------------|---------------|---------------|---------------|---------------|---------------|---------------|---------------|---------------|---------------|
| 2752/ 2751 | 2742/ 2741 | 2732/ 2731 | 2722/ 2721 | 2712/ 2711 | 2552/ 2551 | 2542/ 2541 | 2532/ 2531 | 2522/ 2521 | 2512/ 2511 | 2502/ 2501 |
| | | | | | | | | | | |

| | |
|------------------|--|
| READY FOR GIRTS | |
| INSTALLING GIRTS | |
| READY FOR PANELS | |
| PANELS INSTALLED | |

MOD 2 WESTSIDE GIRTS/SIDING

READY FOR GIRTS 

INSTALLING GIRTS 

READY FOR PANELS 

PANELS INSTALLED 

2602/
2601

M
I
M
O

2612/
2611

MIMO
2622/
2621

2632/
2631

2642/
2641

2652/
2651

2812/
2811

2822/
2821

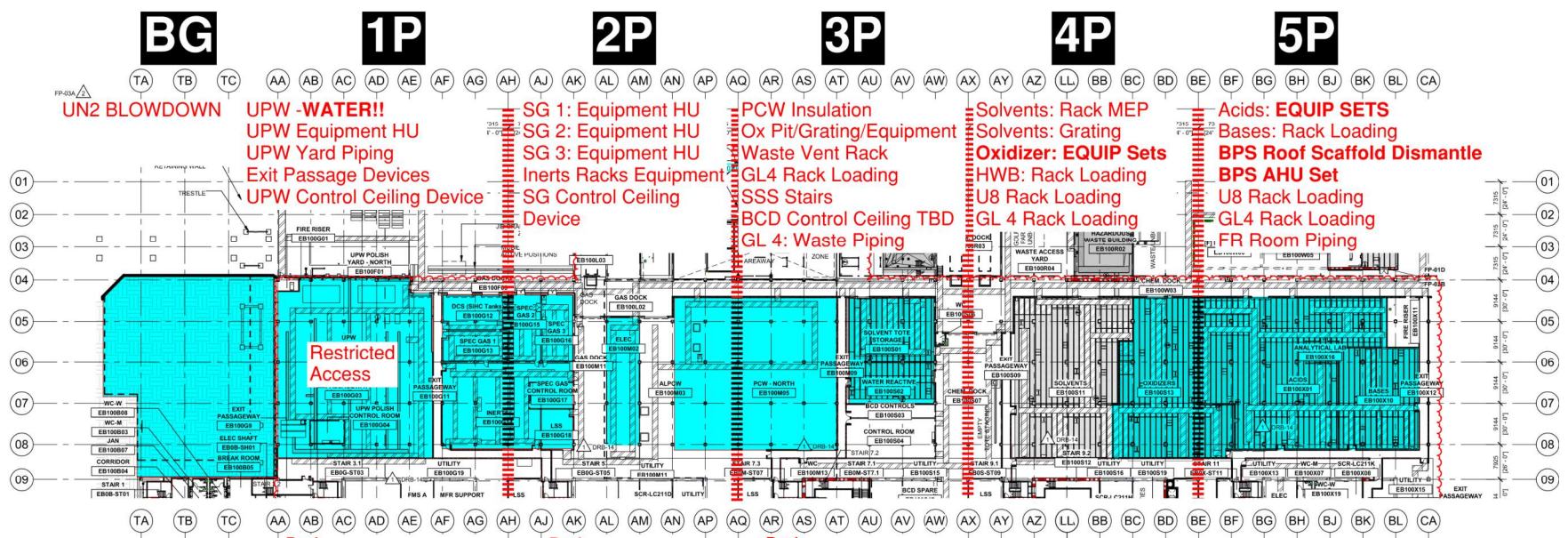
2832/
2831

2842/
2841

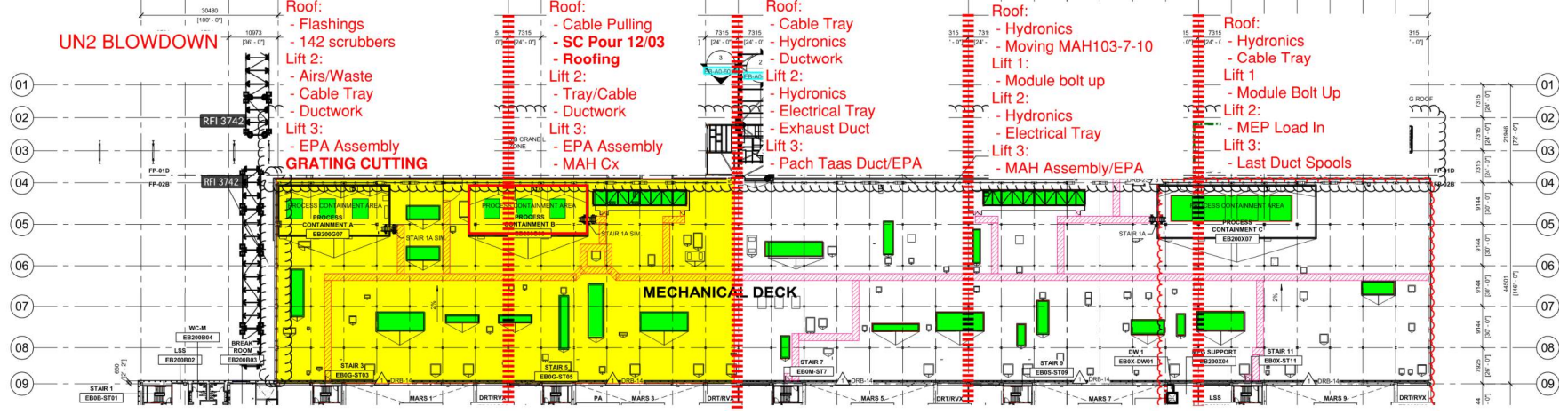
2852/
2851

PSSS.1

Utility Level 1YA



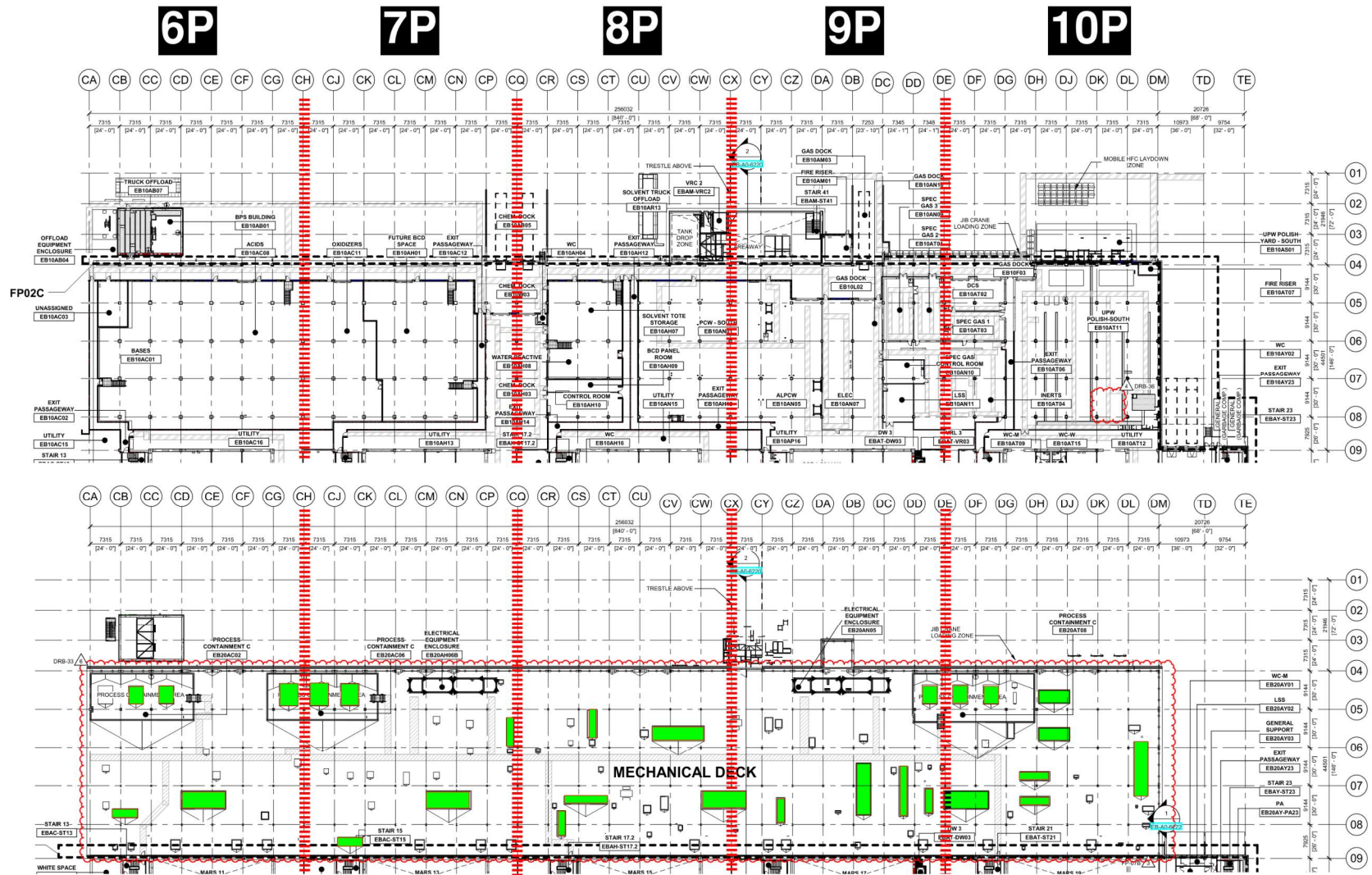
PSSS Roof 2SA



PSSS.2

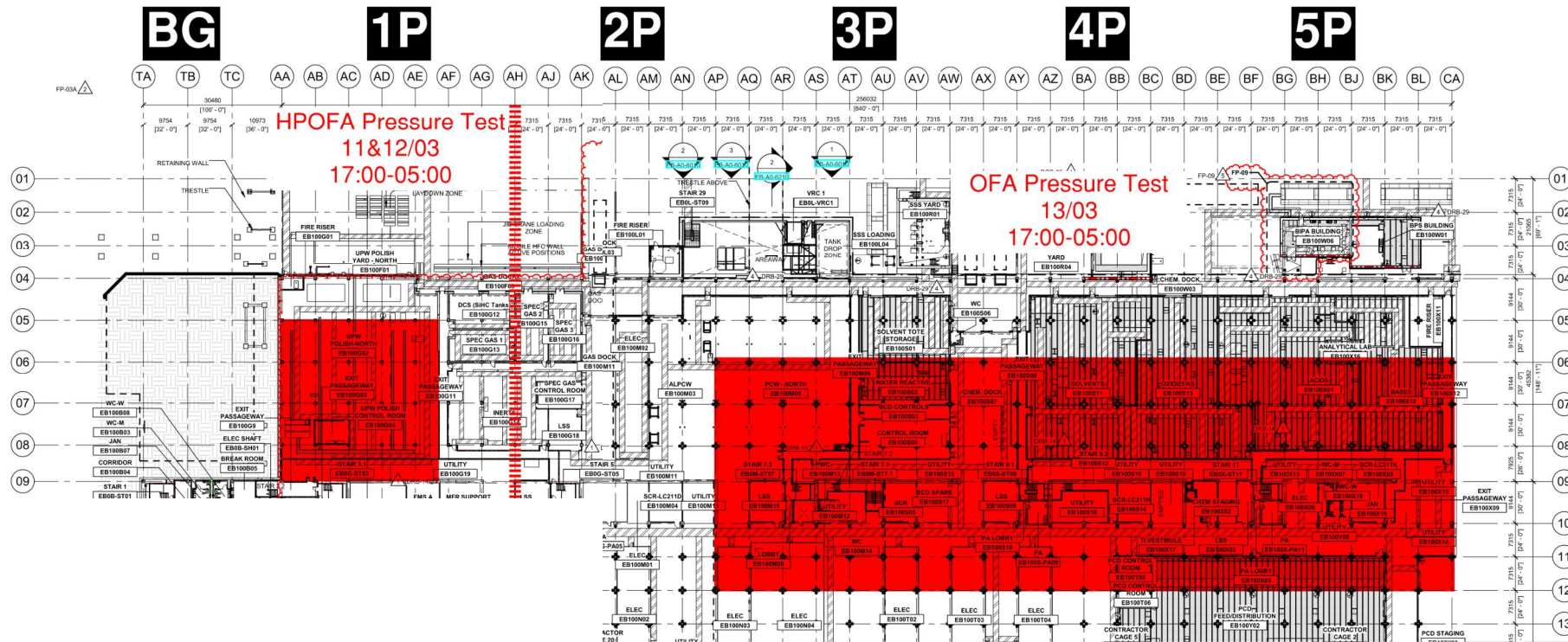
Utility Level
1YA

PSSS Roof
2SA



Utility Level

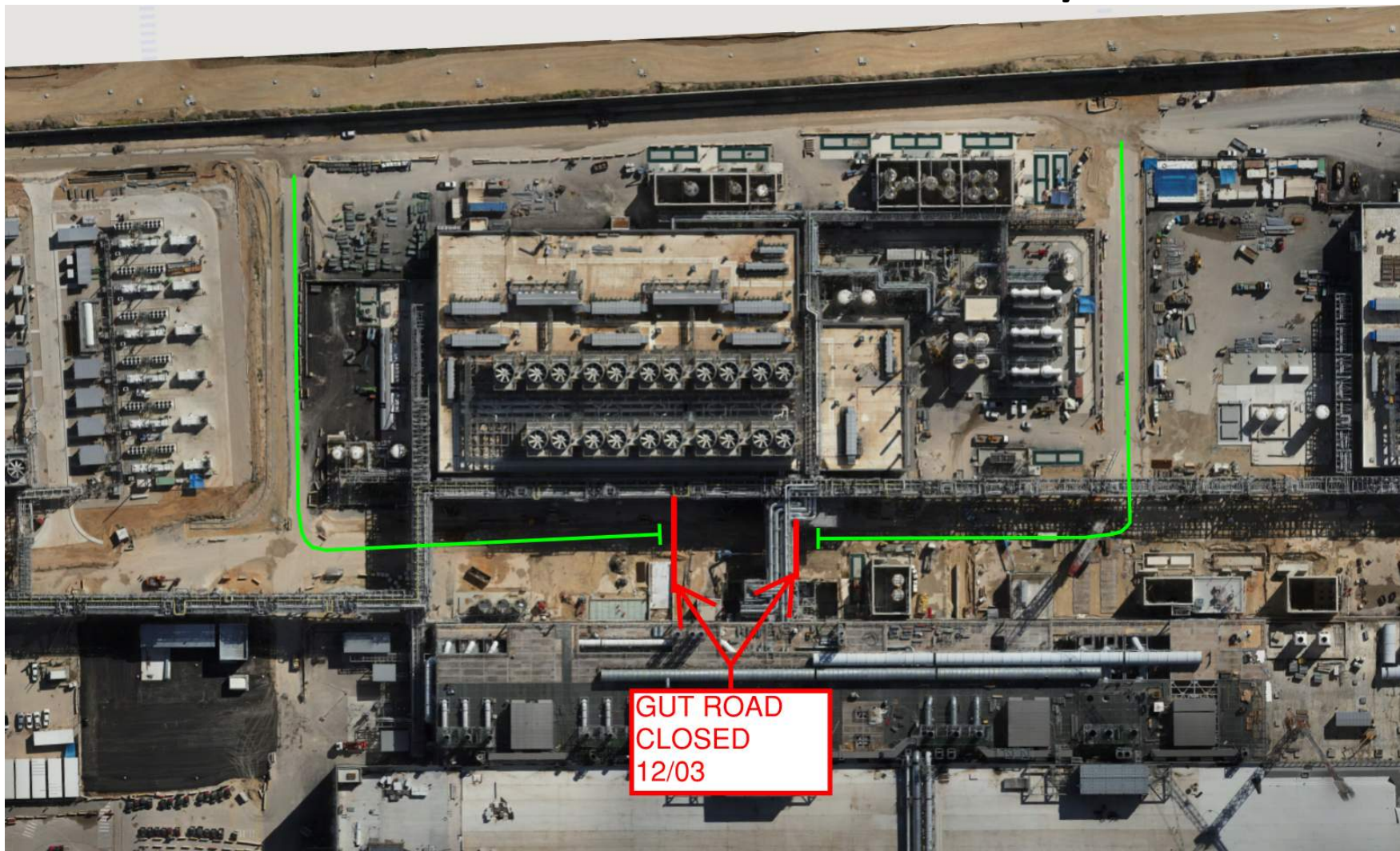
1YA



BGY Closed WW11 For UN2 Blowdown



GUT ROAD CLOSED 12/03



WJG – UL

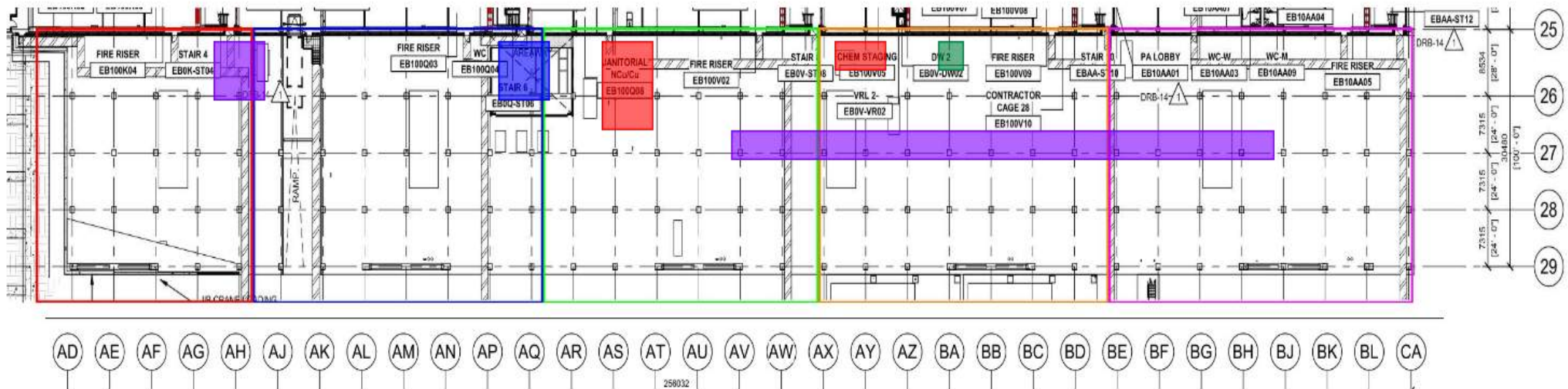
* Carmel Bidud - installation of ducts from small AH to FAB

* Pach Taas - installation of modules in west SUT.

* Megason - working on LSS

* W&W - welding of shims for outriggers
 * MB - installation of FP pipes to lift 3

* Chemo - performing passivation on UPN 117



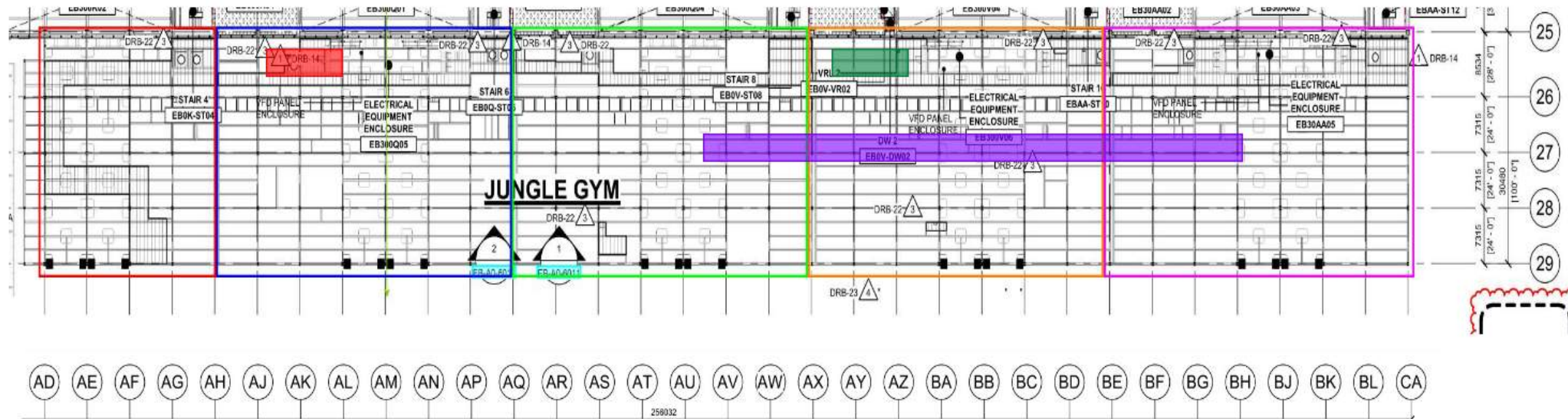


WJG – Lift 2

* Chemo - connecting the Nalco skid for washing and preparing MARS pipes of 2J for pressure test

* 4J MAH scaffold was dismantled
* Pach Taas -connection to single stack to exhaust fans

* Chemo - performing passivation on UPN 117



WJG – Lift 3

| | | | | |
|--|--|--|--|--|
| | | * SN removing, cutting gratings and welding supports | * SN - cutting gratings and welding supports * Pach Taas - installing and fine tuning plates for fans | * Pach Taas - installing sleeves for 5J plenum |
|--|--|--|--|--|



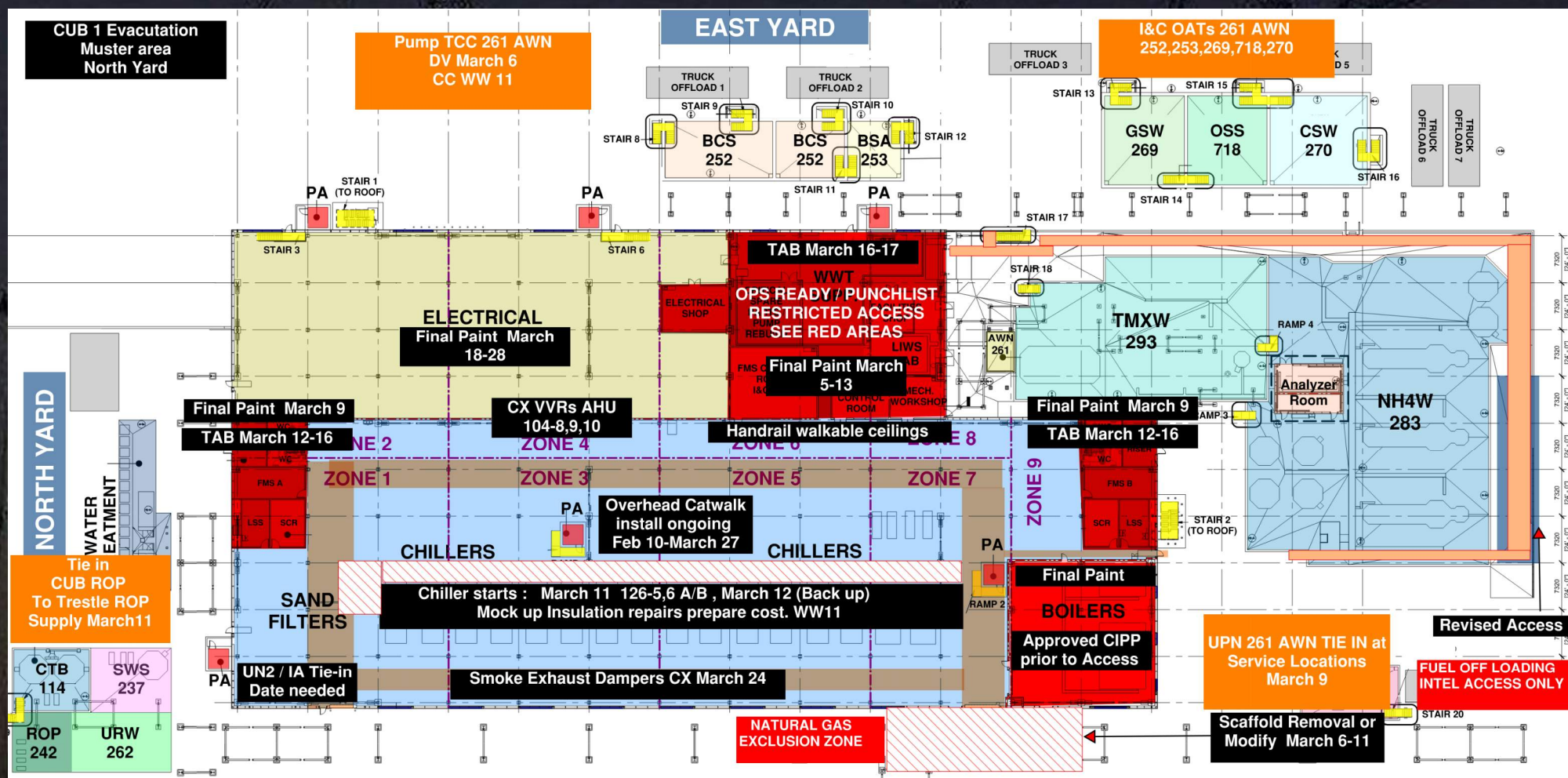


Crane logistics

RT 120 ton
located at AG-AH.

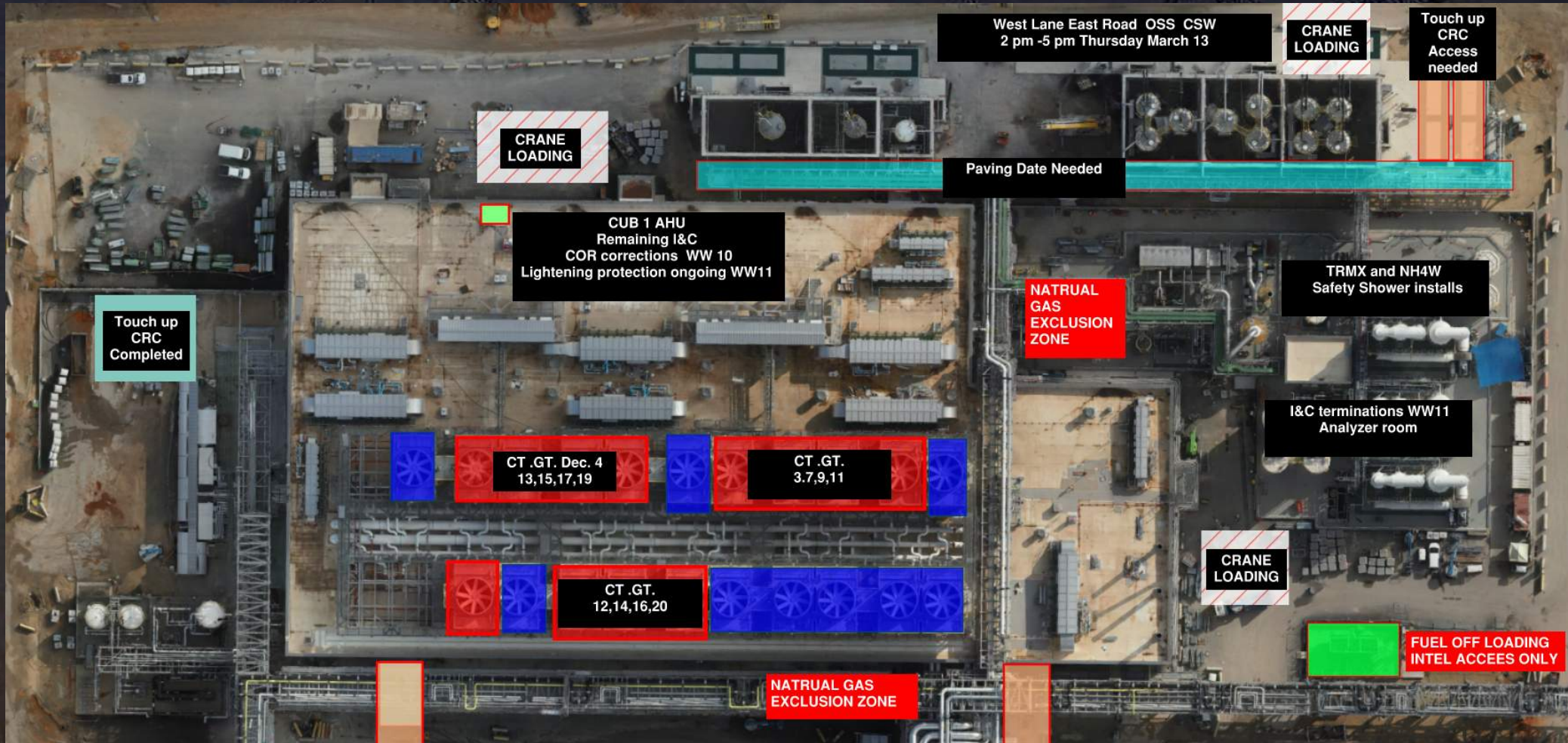
Crane: 750 ton crane
located at AV-AW.



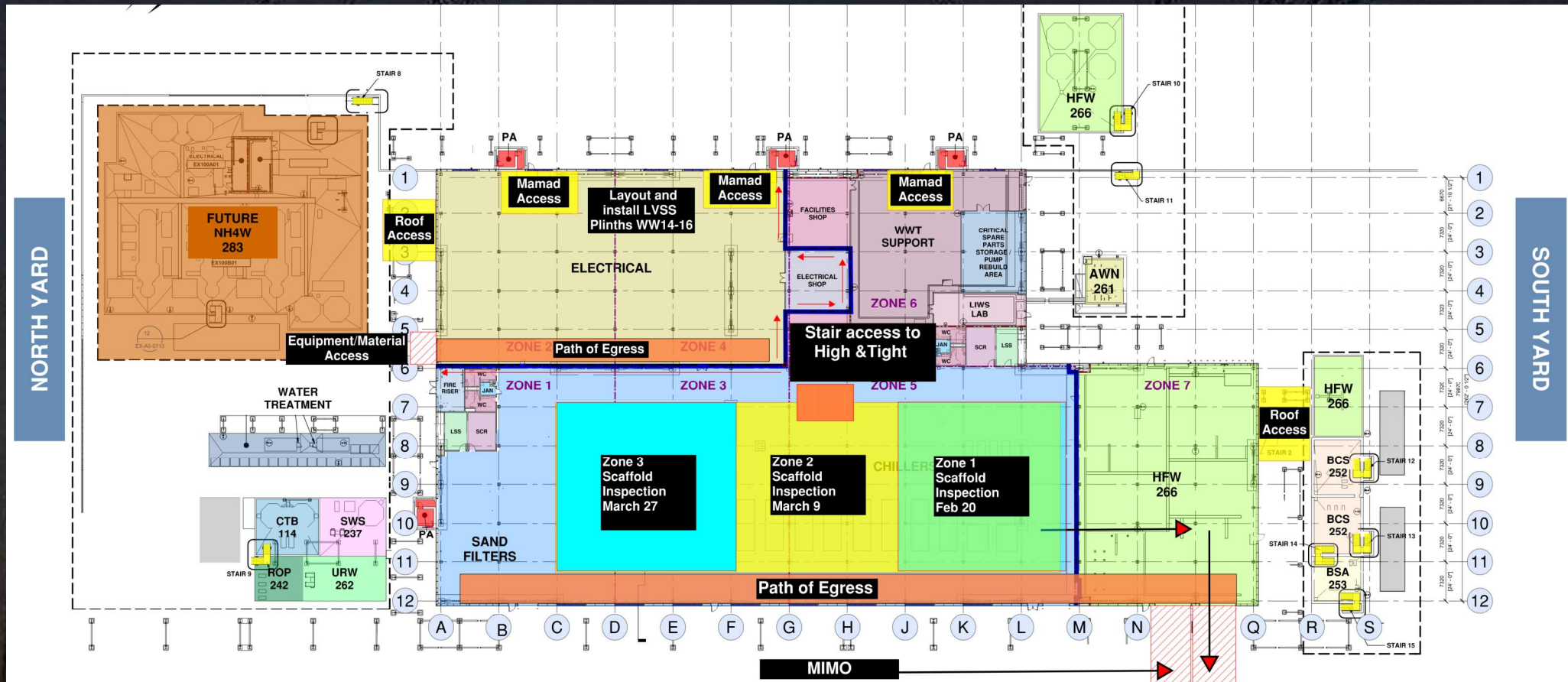


- Waste Systems Pressure Testing Wrap up 3d March 4-5
- Trestle Scaffold removal 5d March 6-11
- Metal flashings and Panel work Man Door 5-7d March 12-20
- Claim Envelope ready for DVs March 20
- DV acceptance list and corrections 7d April 2
- Ops Ready April 3
- Concrete removal Site Grading Form rebar pour concrete 5-7 d Schedule under review
- Bullards 2d April 1-2

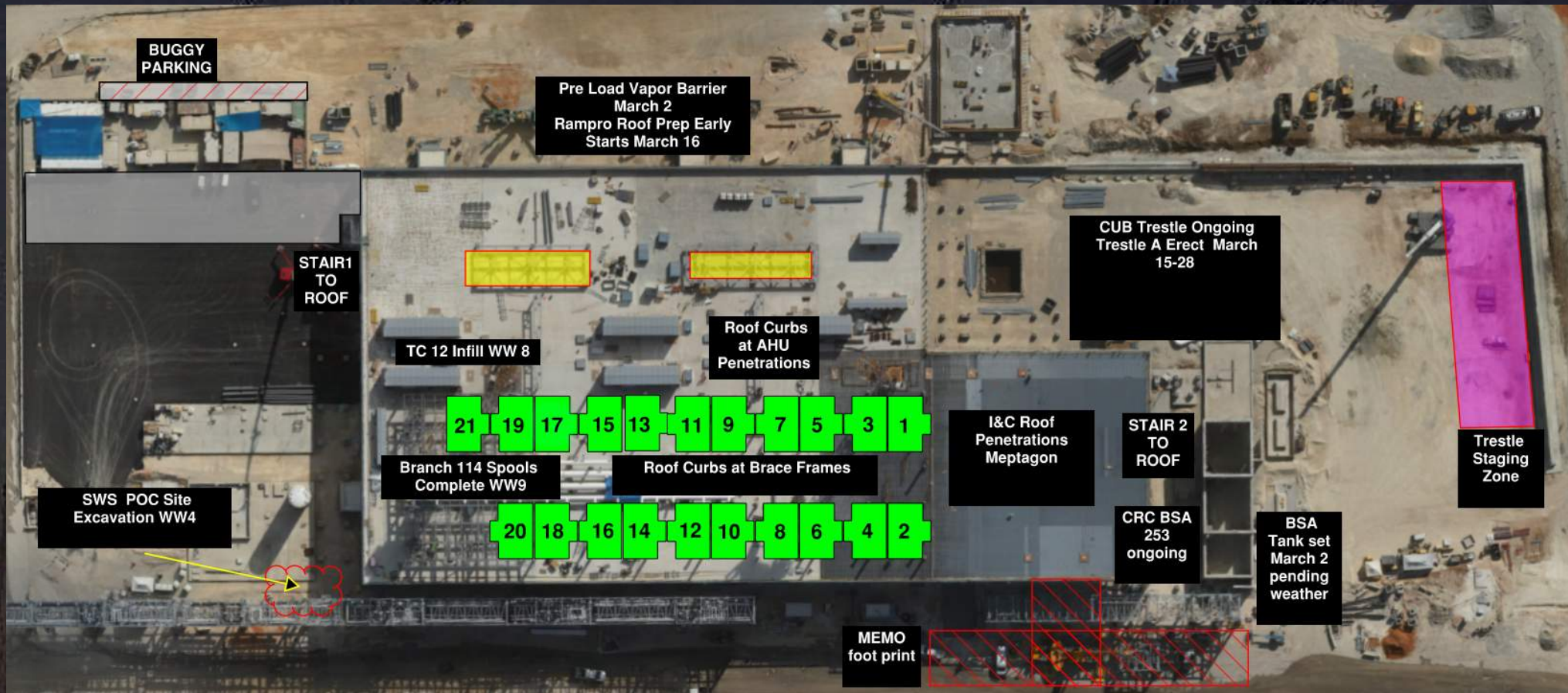
CUB 1 – EXTERIOR/ROOF

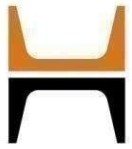


CUB 2- Load in ,H&T, Framing and Sheetrock

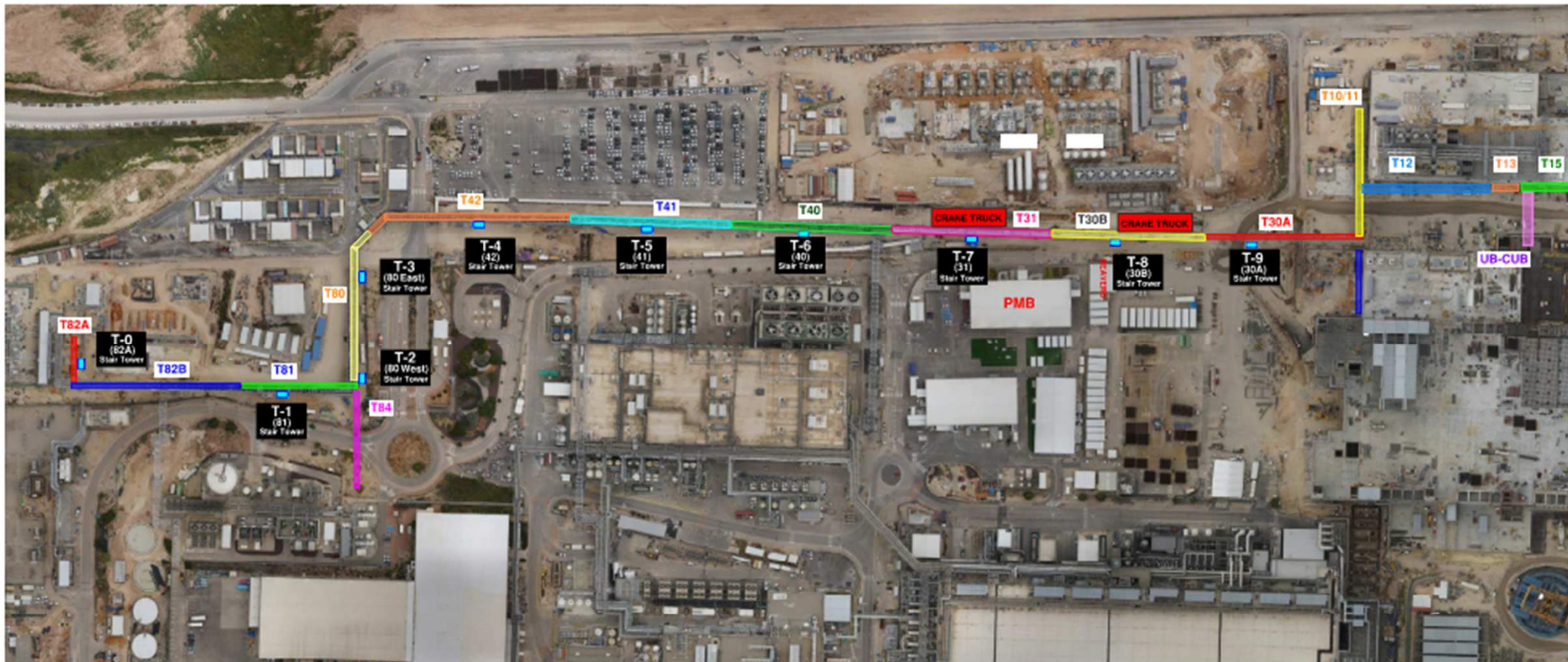


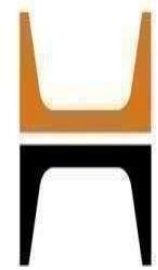
CUB 2 – EXTERIOR/ROOF





HOFFMAN CONSTRUCTION COMPANY





HOFFMAN CONSTRUCTION COMPANY



HOFFMAN
Sparrow  

INTEL- blue fence

OFA PRESSURE TEST

THURSEDY MAR.13 18:00

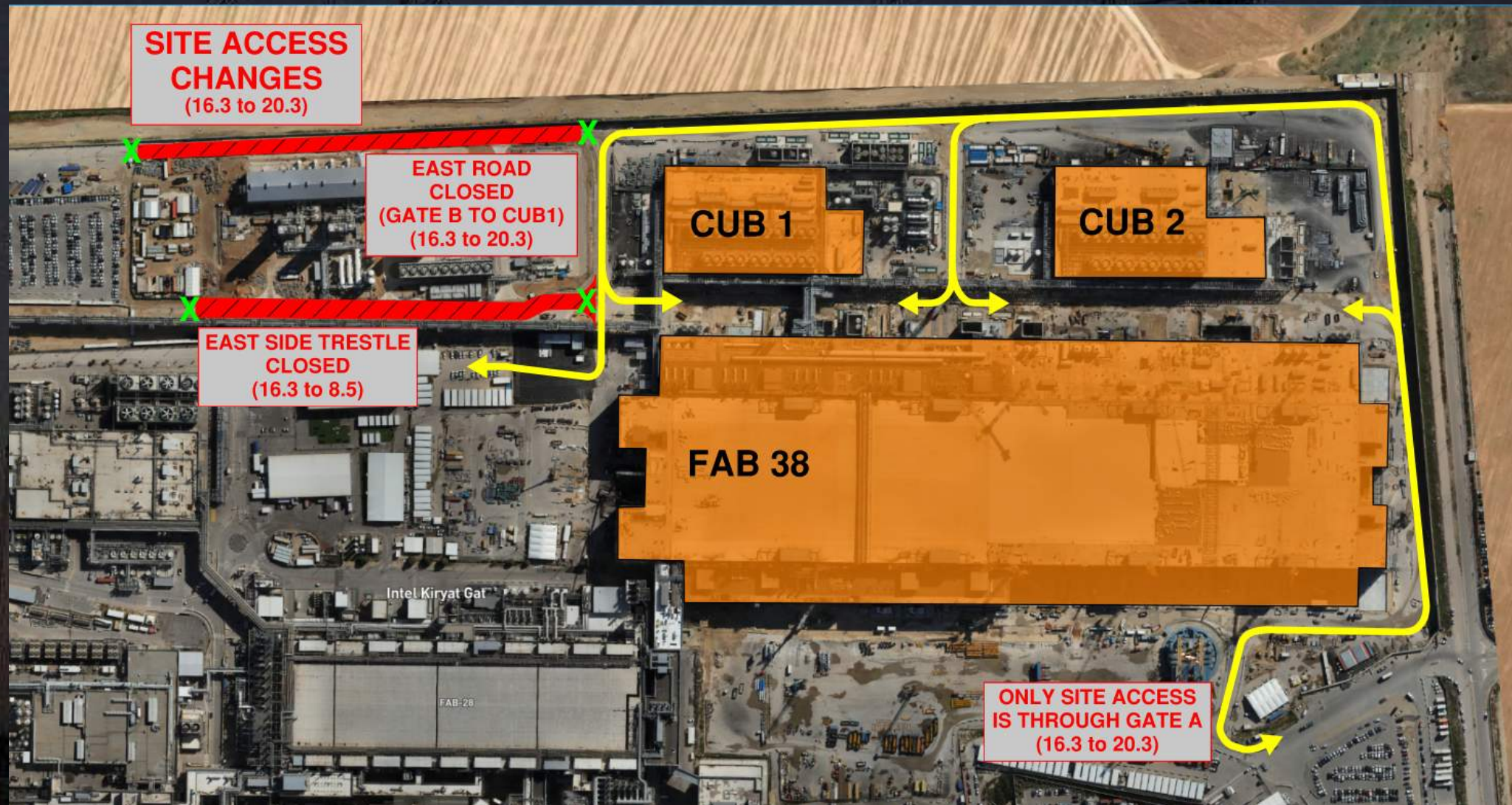
FRIDAY MAR.14 -14:00



Daily Coordination Meeting

Site Logistics

North





Daily Coordination Meeting

Site Logistics

North





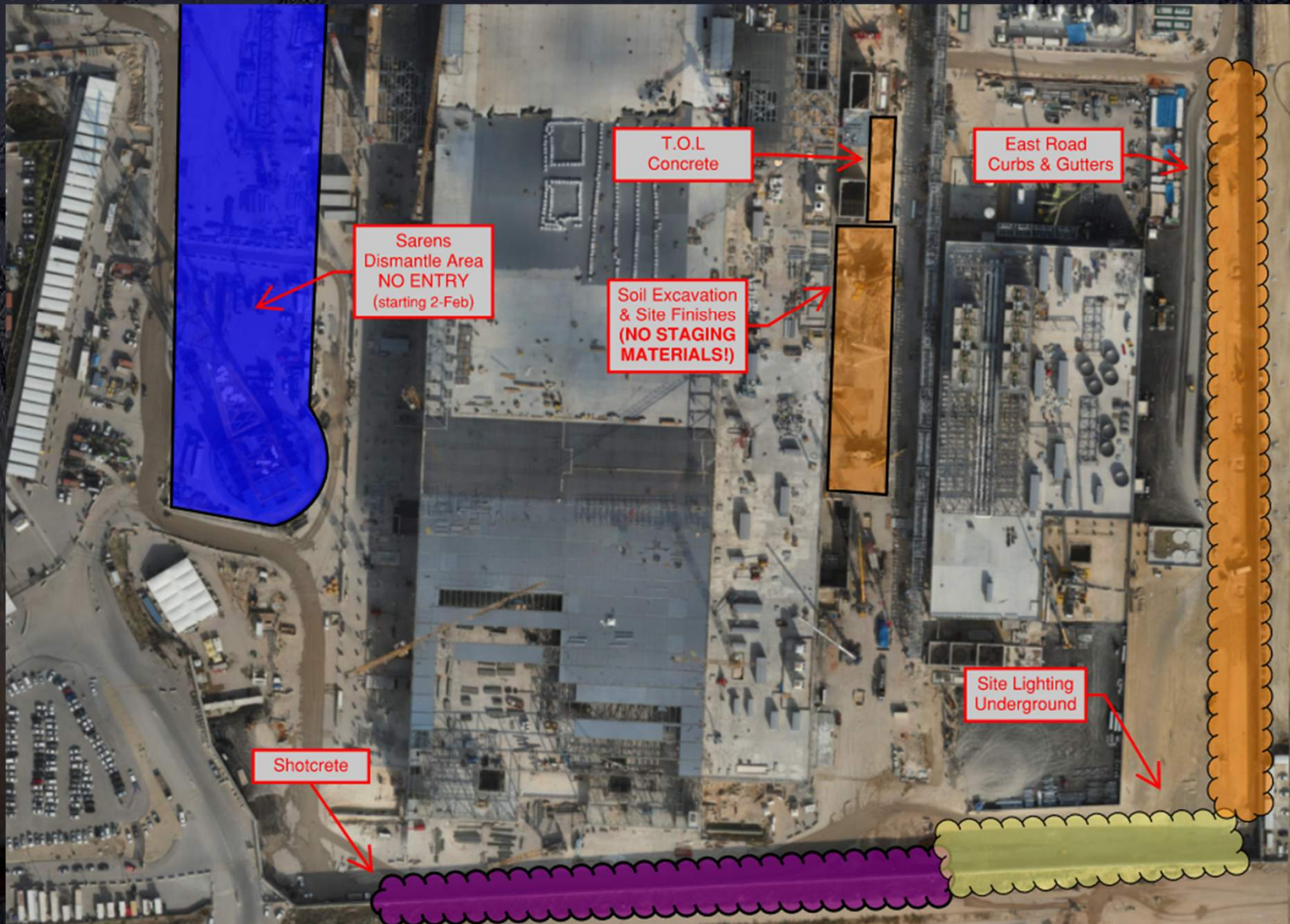
HOFFMAN CONSTRUCTION COMPANY



Daily Coordination Meeting

Site Logistics

South





Fit For Duty

- Due to the holiday season, we are in, extra attention must be given to the workers on-site. Some employees are fasting for Ramadan and cannot drink or eat during the day but still need to work. It is important to continuously check with the workers to ensure they are okay and that they are taking more breaks than usual.
- Additionally, we are during the Purim holiday. As everyone knows, during this holiday, people tend to drink alcohol more frequently. We would like to remind the workers that we respect their privacy during their personal time.
- However, if someone is not fit to come to work, it's better that they do not show up. If they do arrive at work and are not in a suitable condition to work, they should be sent home and not allowed to work that day.
- There are signs to look for, such as exhaustion, fatigue, the smell of alcohol, headaches, and more.

Wishing everyone a happy holiday!

Daily Coordination Meeting



14:00 Sign In