

Daily Coordination Meeting



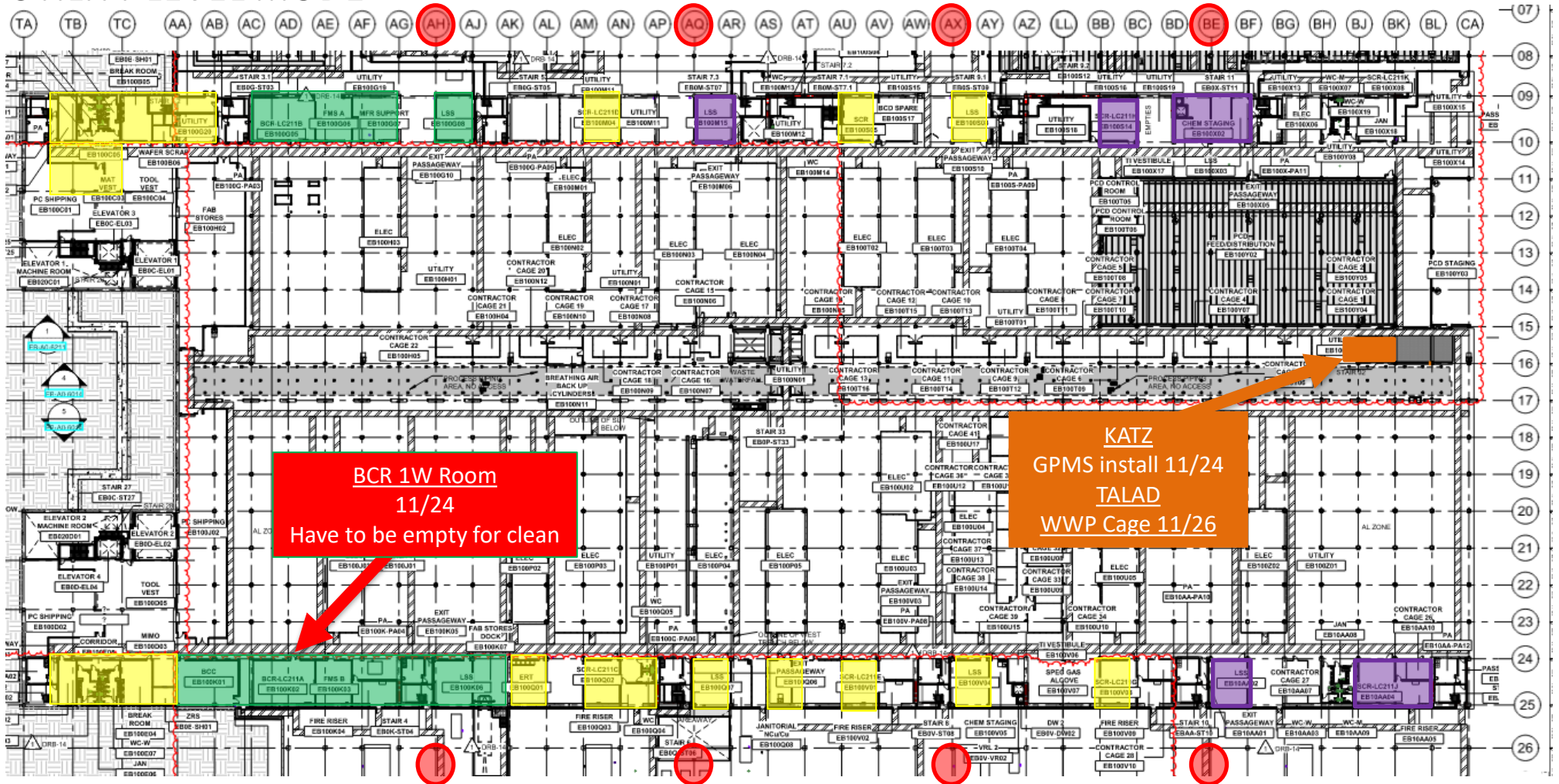
14:00 Sign In

Daily Coordination Meeting

General Topics:

Weekend work

UTILITY LEVEL MOD1



BCR 1W Room
11/24
Have to be empty for clean

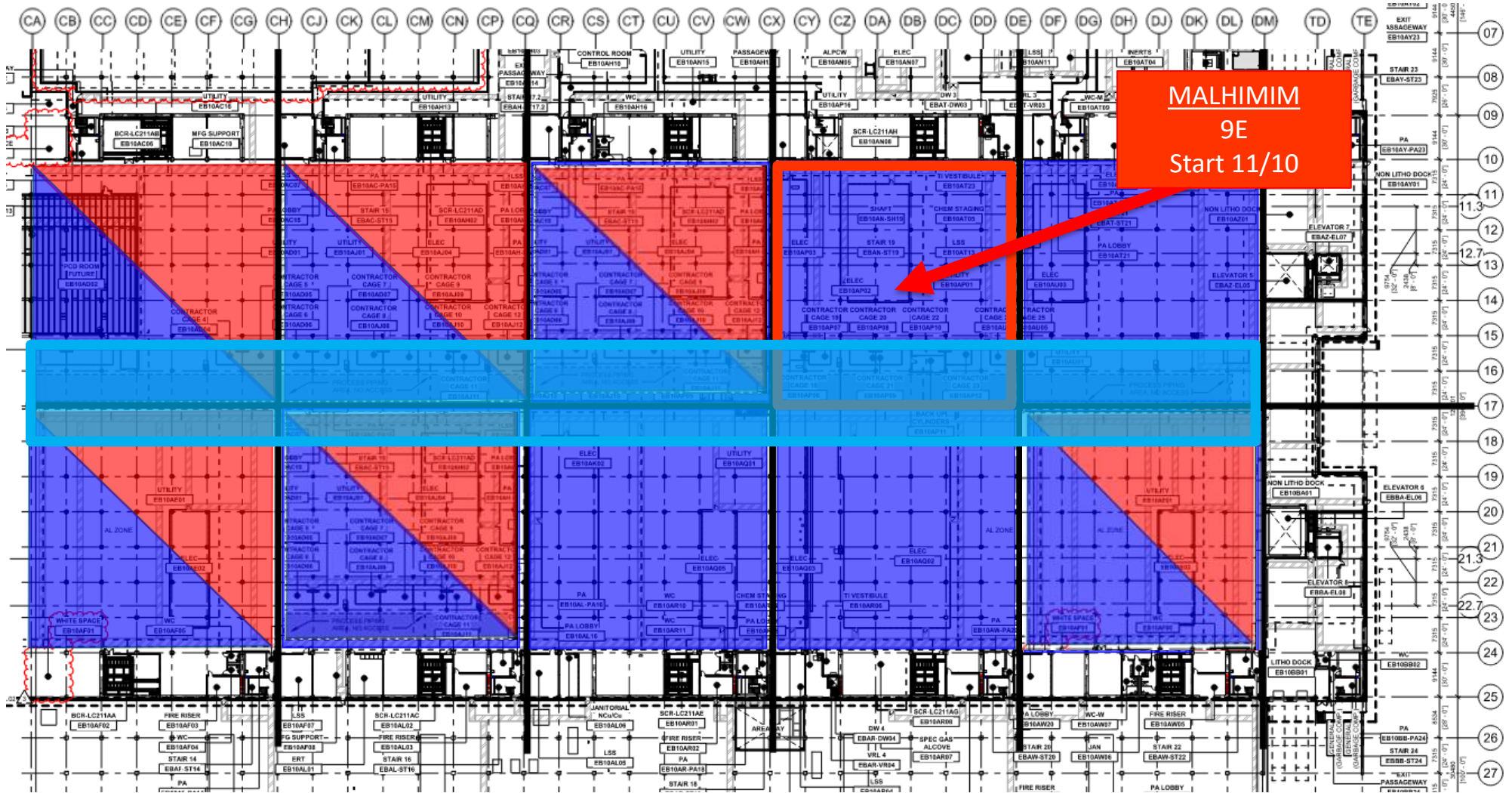
KATZ
GPMs install 11/24
TALAD
WWP Cage 11/26

BELFOR
Mold remediation

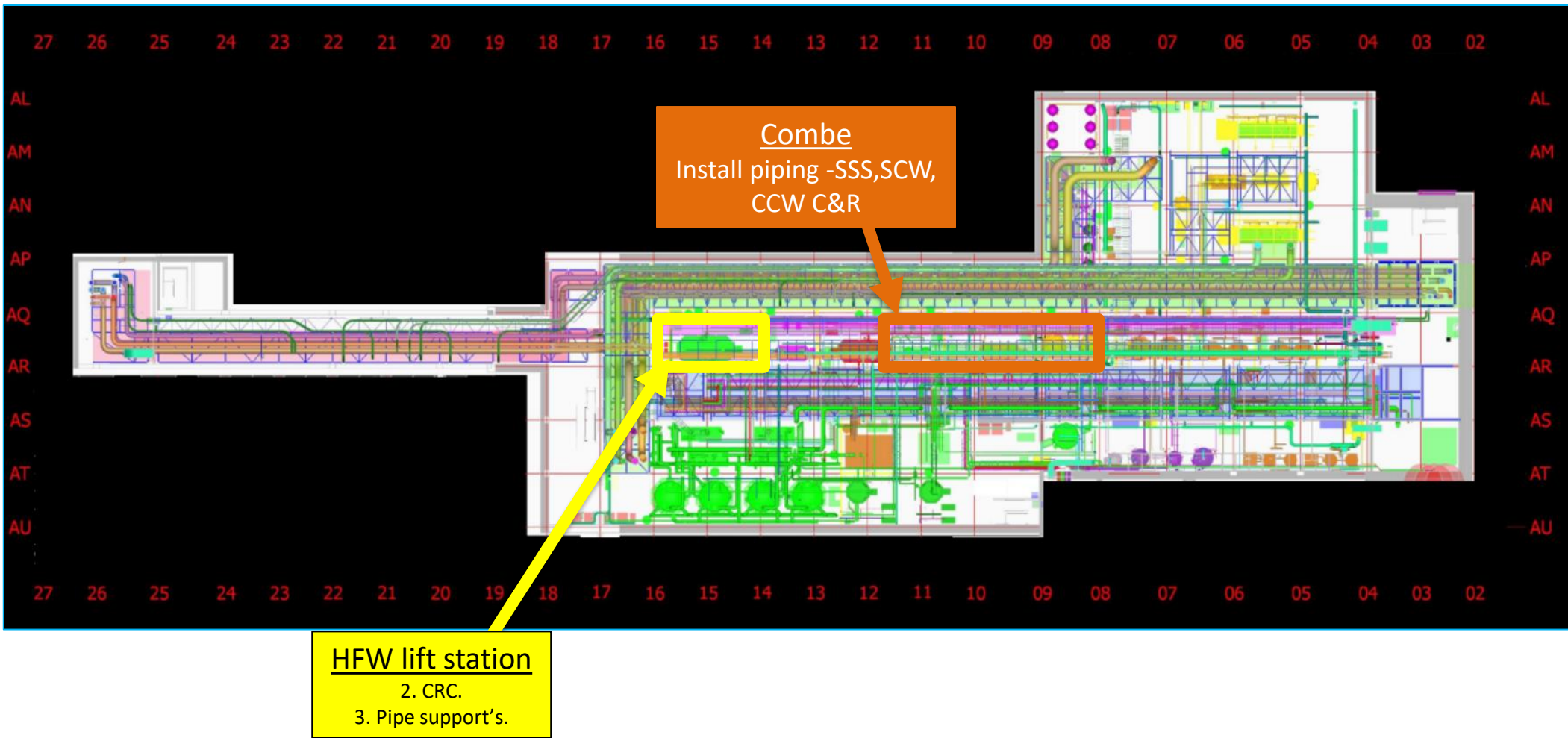
ELRAM
Drywall install

MEP+Electrical
Ready for re-install

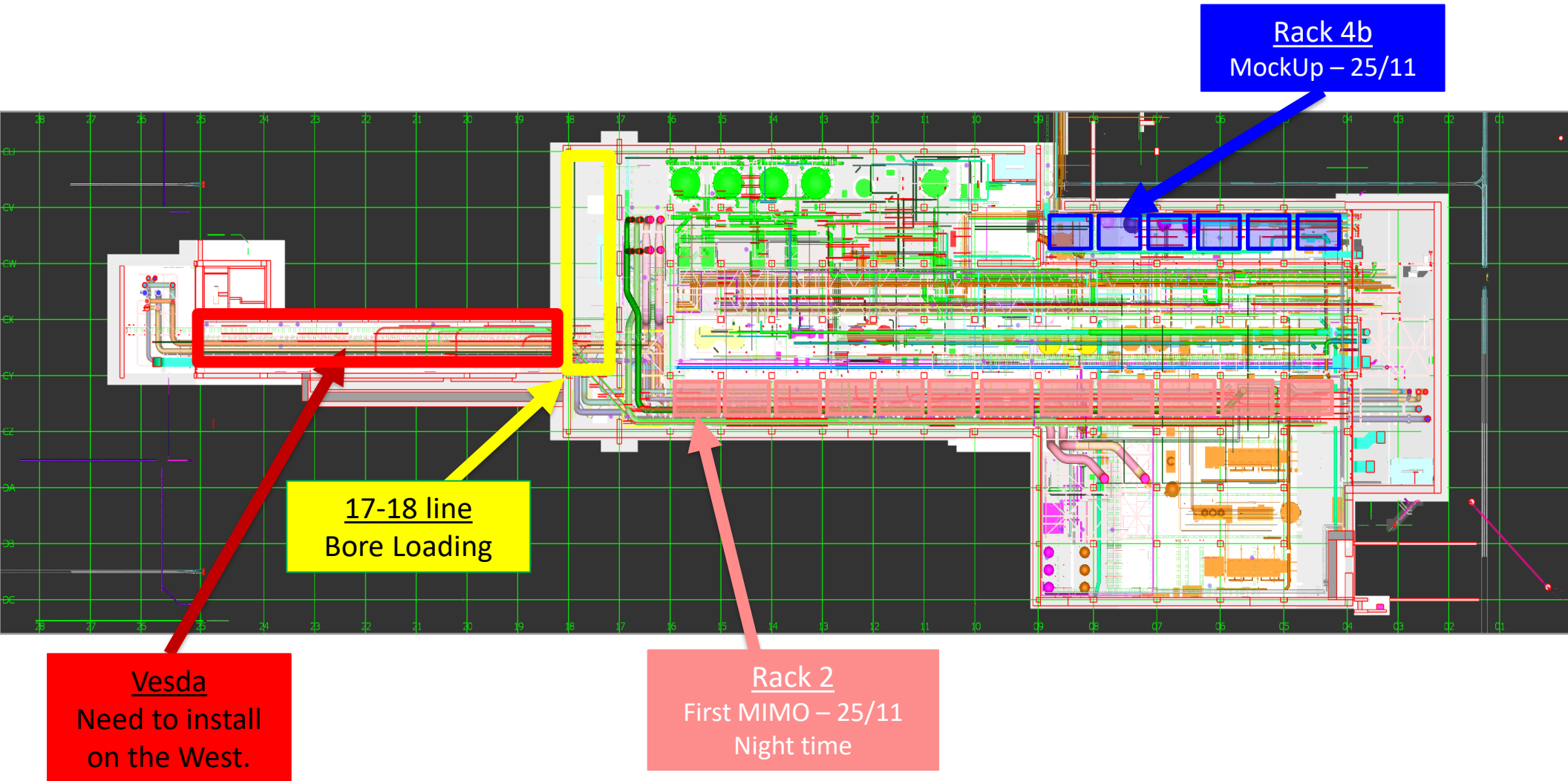
UTILITY LEVEL MOD2



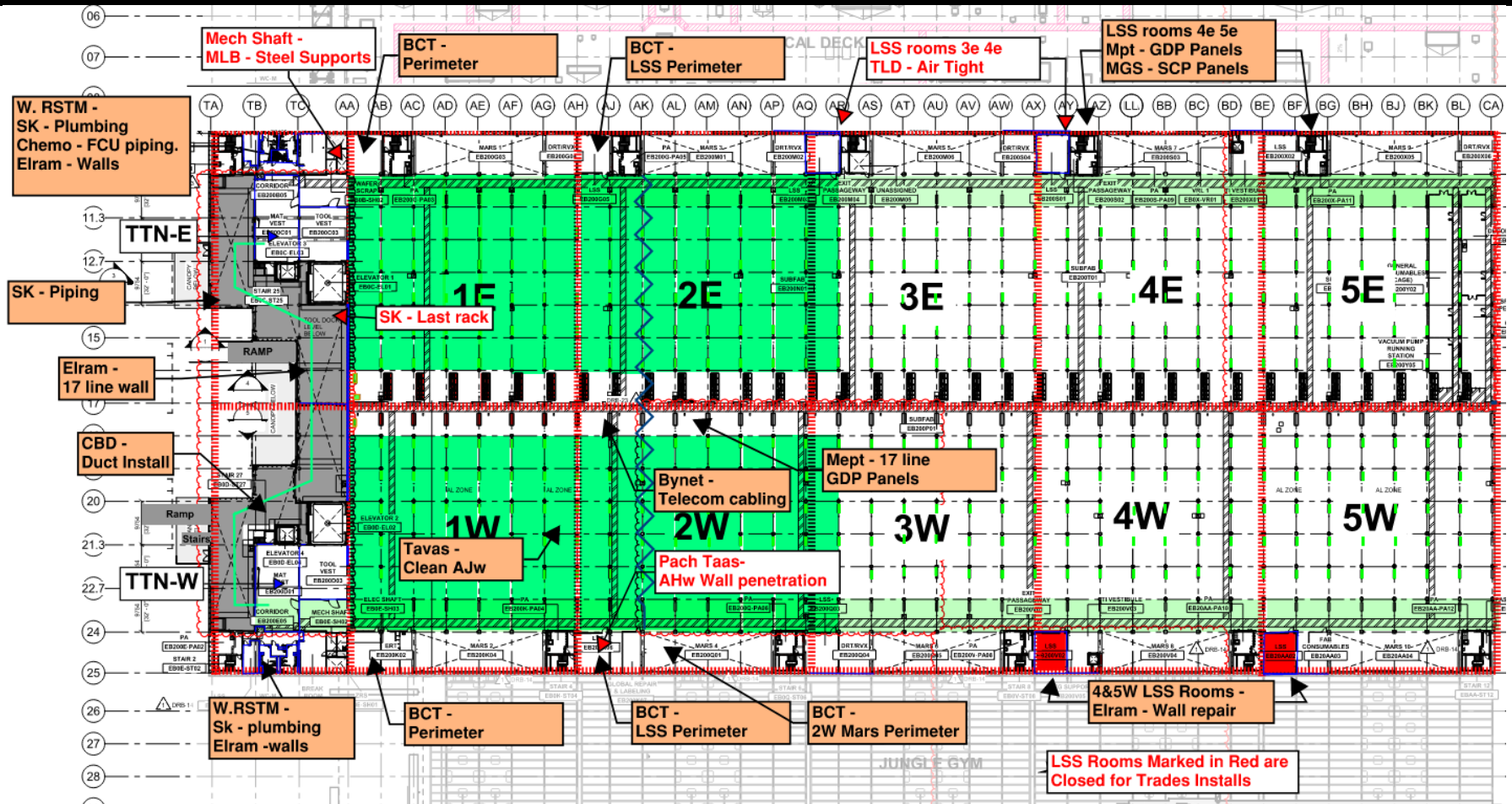
SUT 38.1 LEVEL



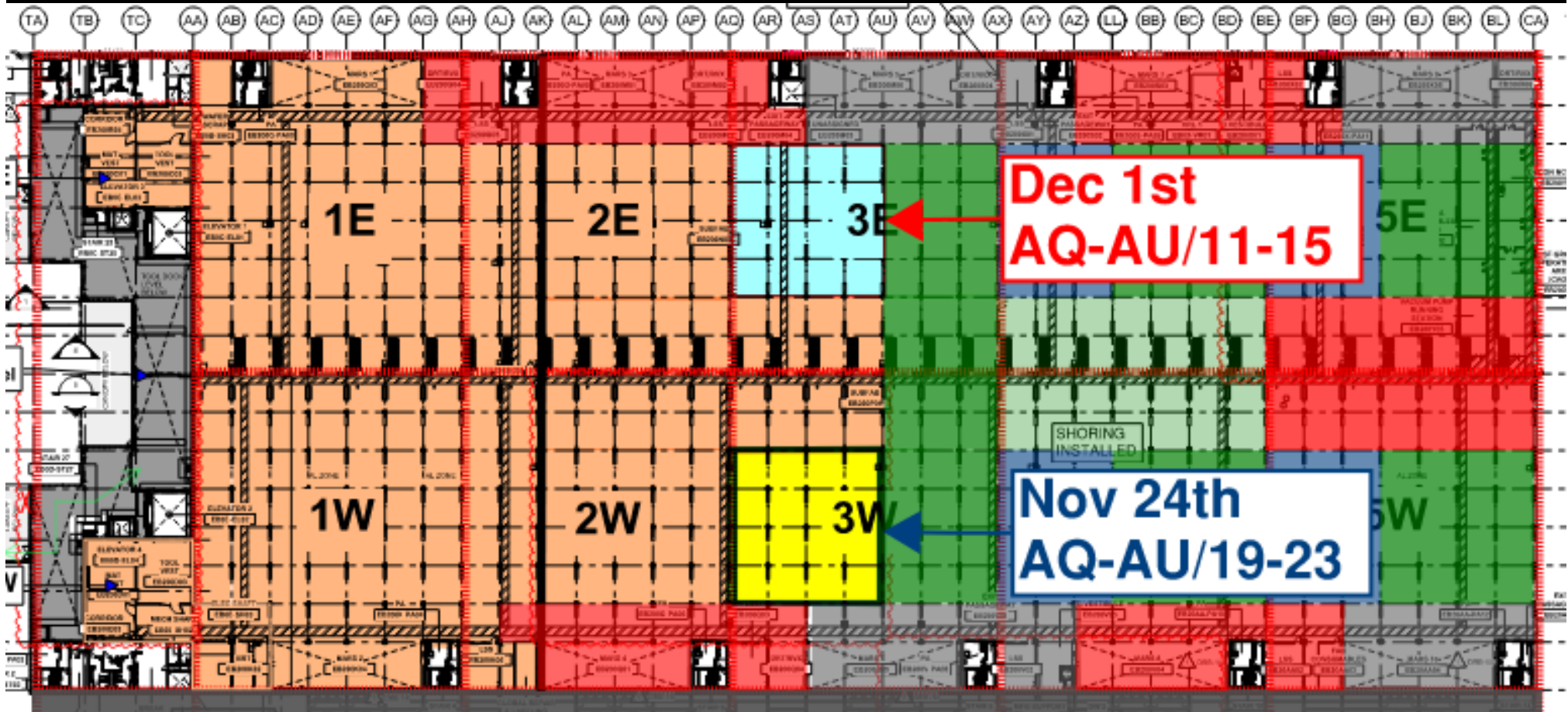
SUT 38.2 LEVEL



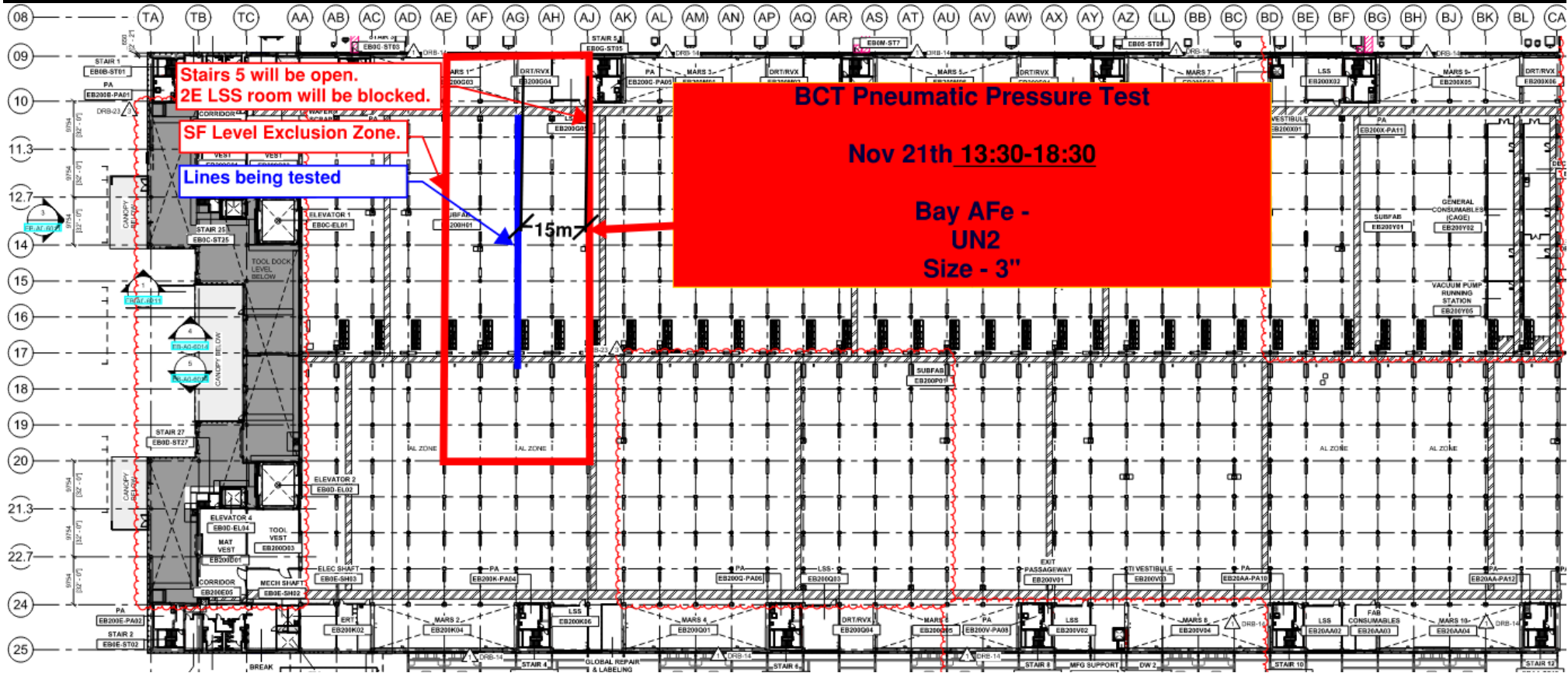
SUBFAB BUILDOUT MOD 1



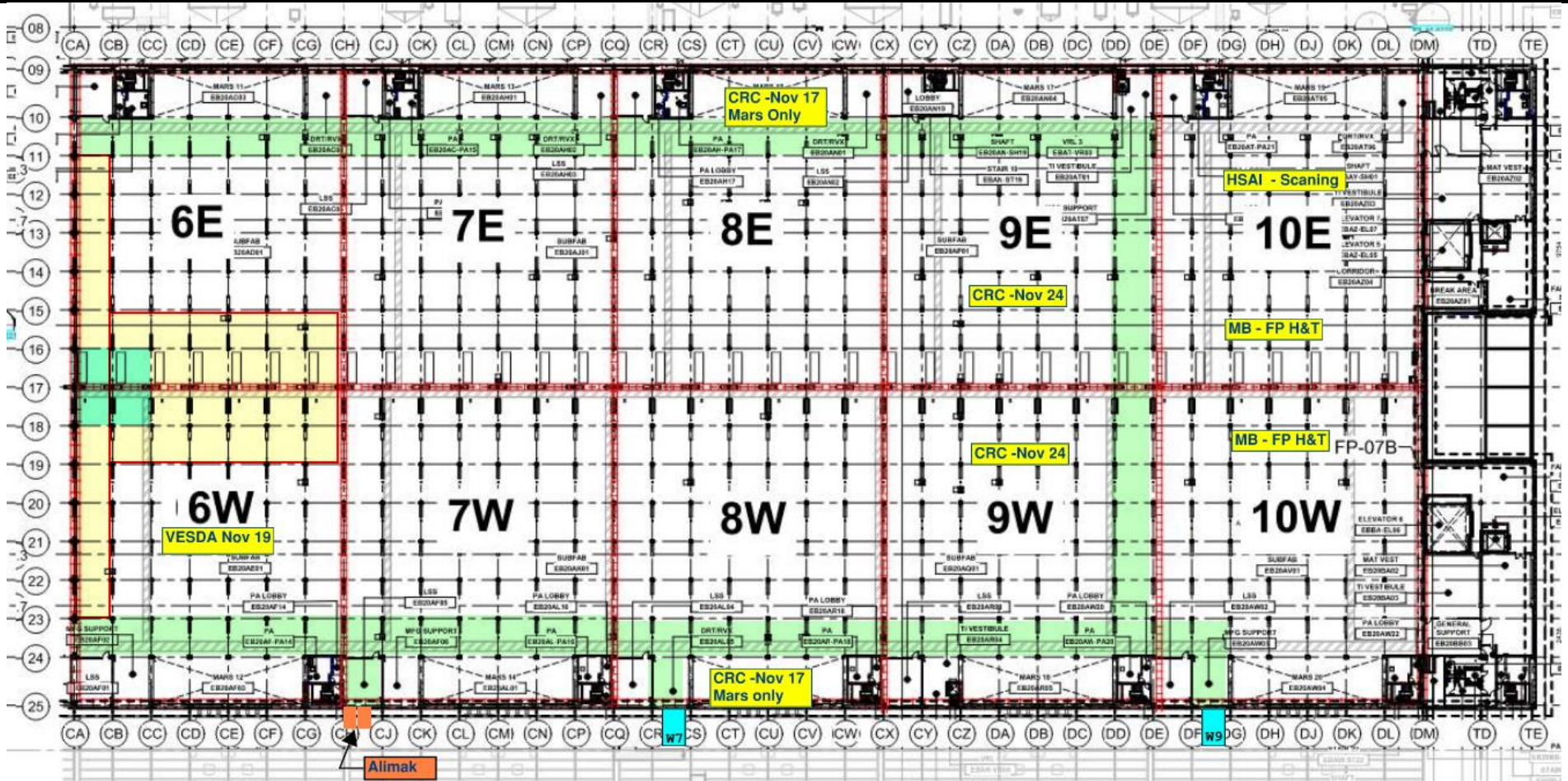
SUBFAB CRC TOPCOAT



BCT Pressure Test Today

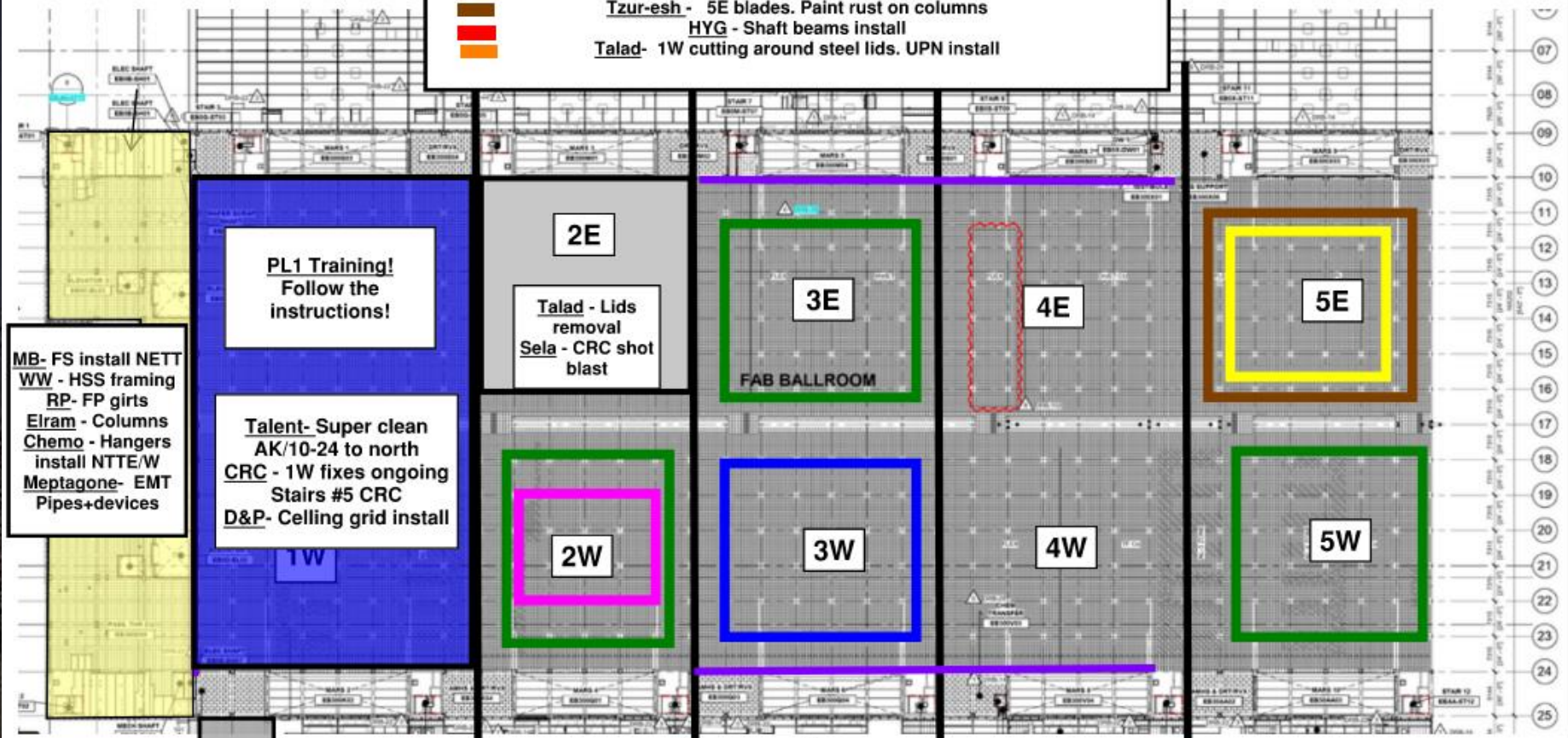


SUBFAB BUILDOUT MOD 2



CR level:

- Afcon - Cable trays, modules and stickers
- MB- Pipes and drops
- Elram - 9-10,24-25 columns/shaft walls. AA line column wraps
- Meptagon - EMT Pipes+devices. TET/NET devices all areas
- D&P - Rods install, seismic cables
- Tzur-esh - 5E blades. Paint rust on columns
- HYG - Shaft beams install
- Talad- 1W cutting around steel lids. UPN install



MB- FS install NETT
 WW - HSS framing
 RP- FP girts
 Elram - Columns
 Chemo - Hangers
 install NTTE/W
 Meptagone- EMT
 Pipes+devices

PL1 Training!
 Follow the instructions!

Talent- Super clean
 AK/10-24 to north
 CRC - 1W fixes ongoing
 Stairs #5 CRC
 D&P- Ceiling grid install

2E
 Talad - Lids removal
 Sela - CRC shot blast

3E
 FAB BALLROOM

4E

5E

2W

3W

4W

5W

Link
 Pach-Taas – exhaust duct install and tie in
 SIG- Mobile scaffold install
 Afcon- Rack install
 Newcotech- Temp wall
 Afcon – Cable tray & racks install
 Sela - CRC waiting for QC turnover
 Talad - CRC protection cover

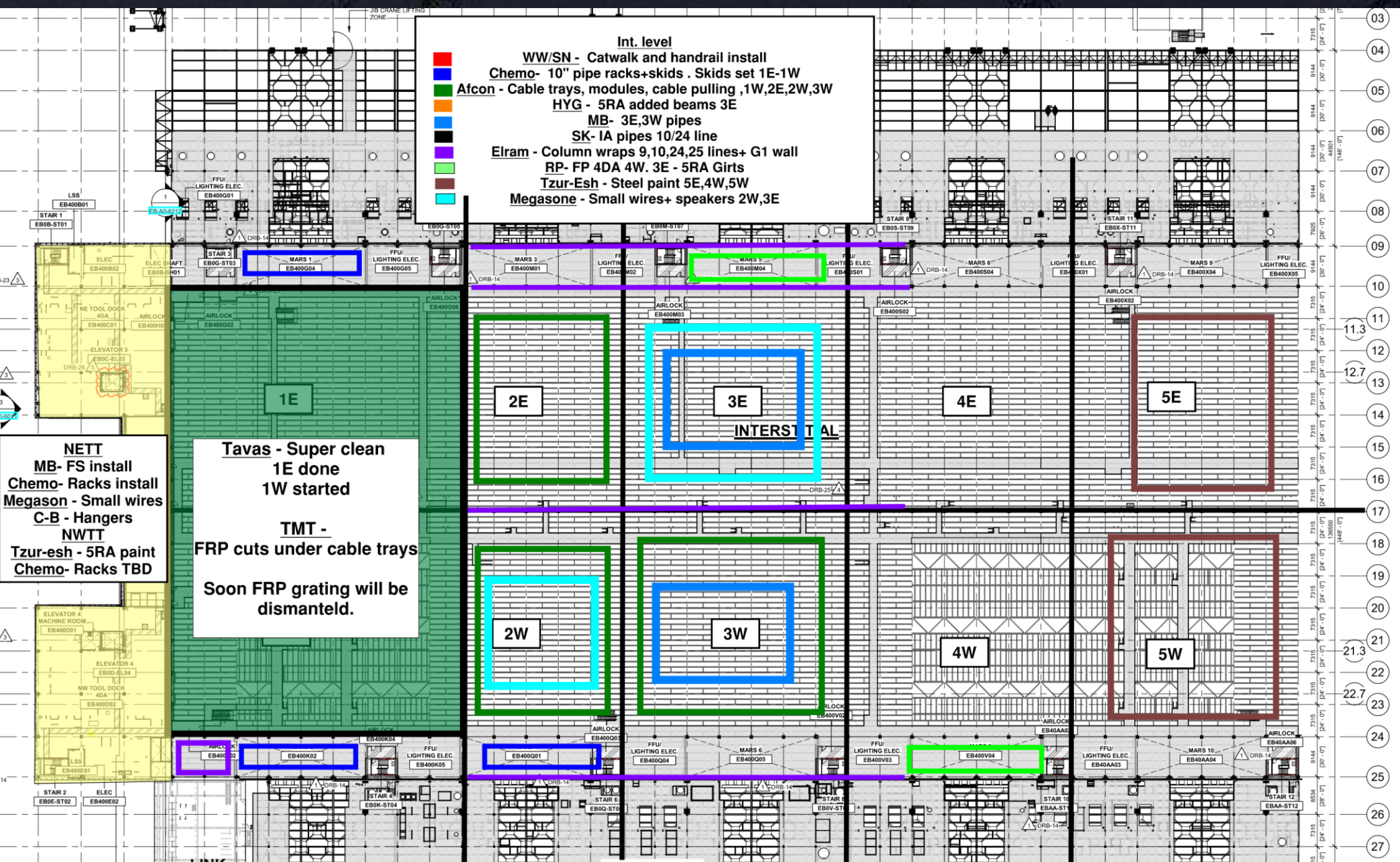
Int. level

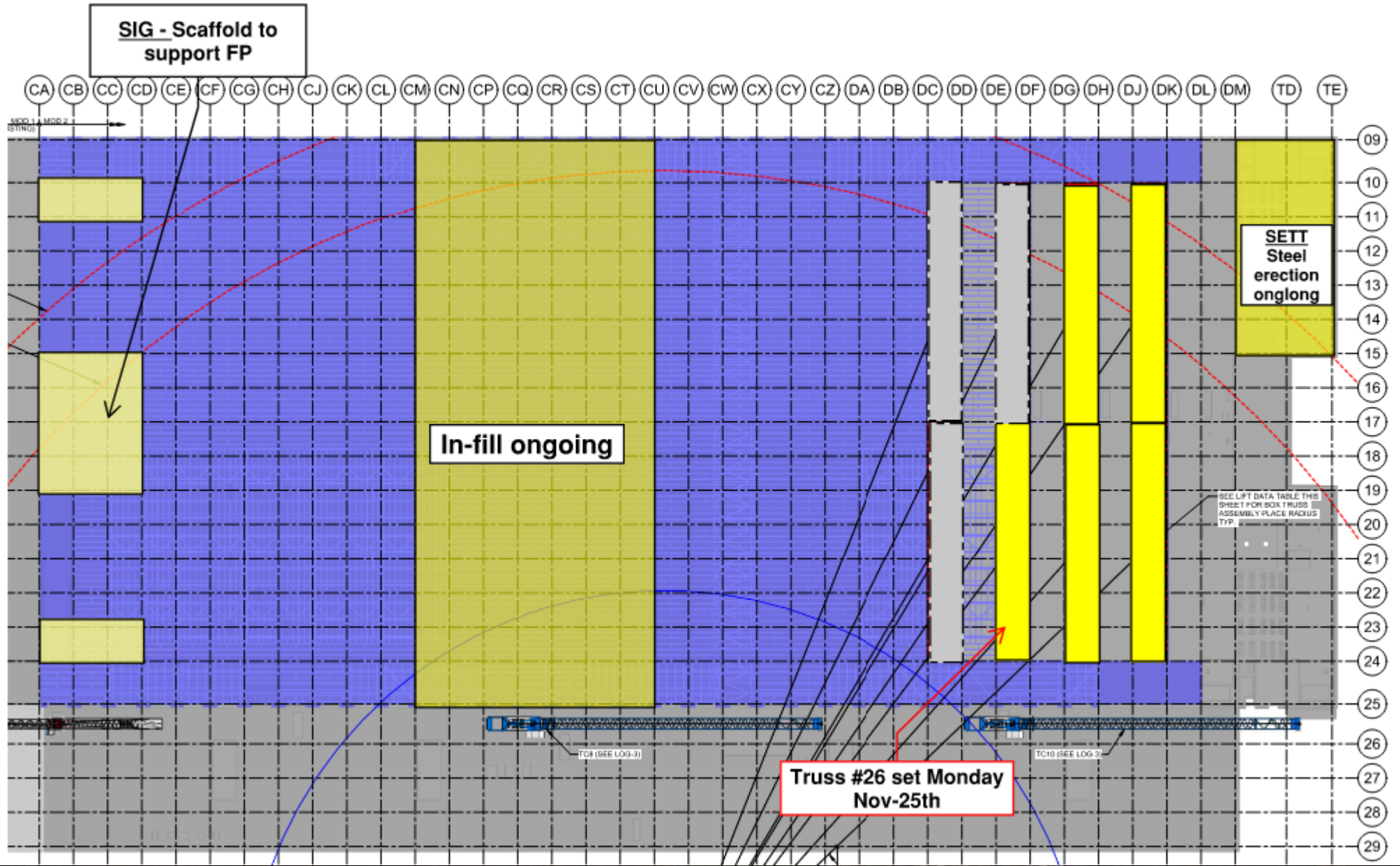
- WW/SN - Catwalk and handrail install
- Chemo- 10" pipe racks+skids . Skids set 1E-1W
- Afcon - Cable trays, modules, cable pulling ,1W,2E,2W,3W
- HYG - 5RA added beams 3E
- MB- 3E,3W pipes
- SK- IA pipes 10/24 line
- Elram - Column wraps 9,10,24,25 lines+ G1 wall
- RP- FP 4DA 4W. 3E - 5RA Girts
- Tzur-Esh - Steel paint 5E,4W,5W
- Megason - Small wires+ speakers 2W,3E

NETT
 MB- FS install
 Chemo- Racks install
 Megason - Small wires
 C-B - Hangers
 NWTT
 Tzur-esh - 5RA paint
 Chemo- Racks TBD

Tavas - Super clean
 1E done
 1W started

TMT -
 FRP cuts under cable trays
 Soon FRP grating will be dismantled.

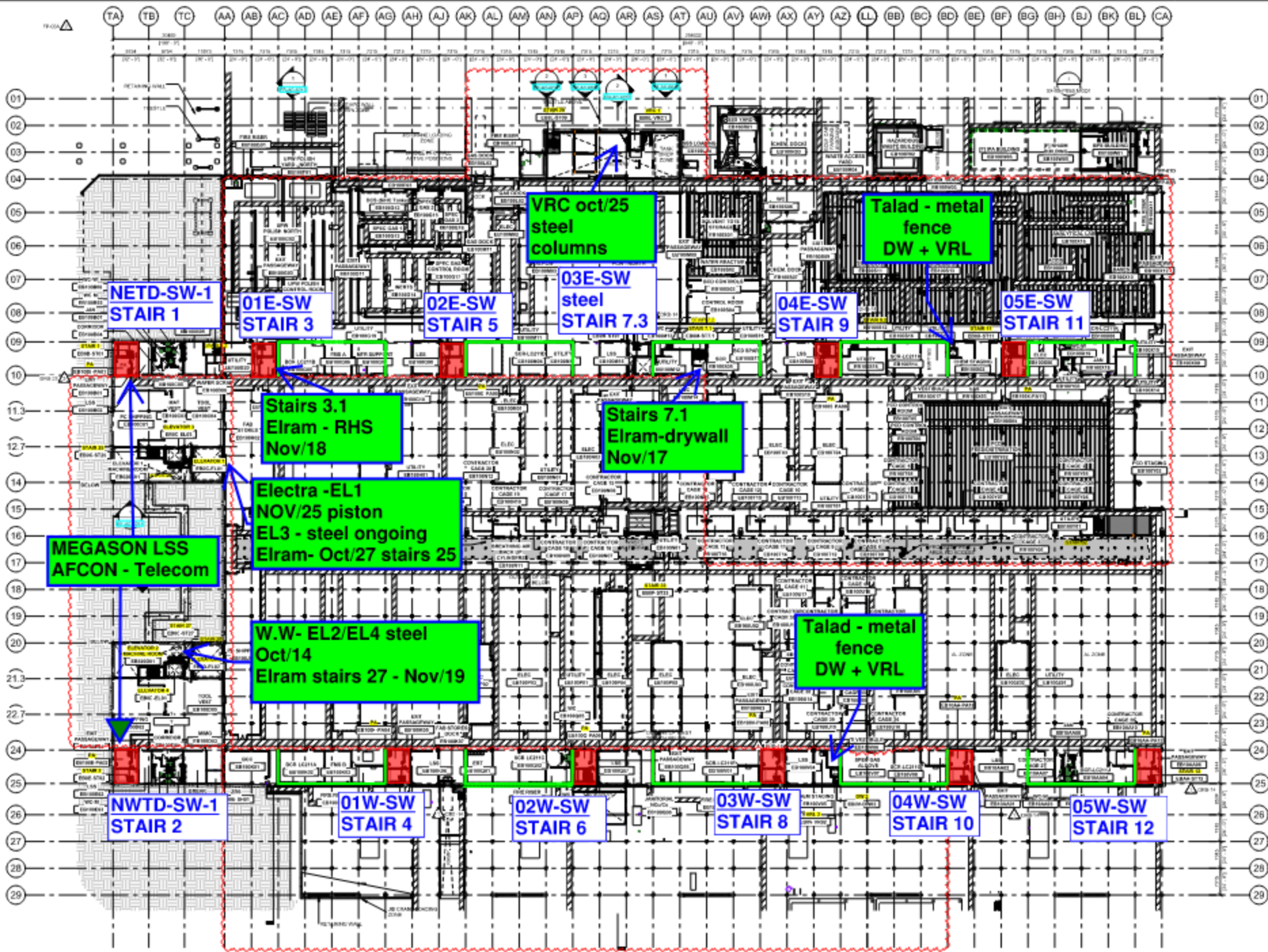




Clean Room Wall Of Shame

WW/SN



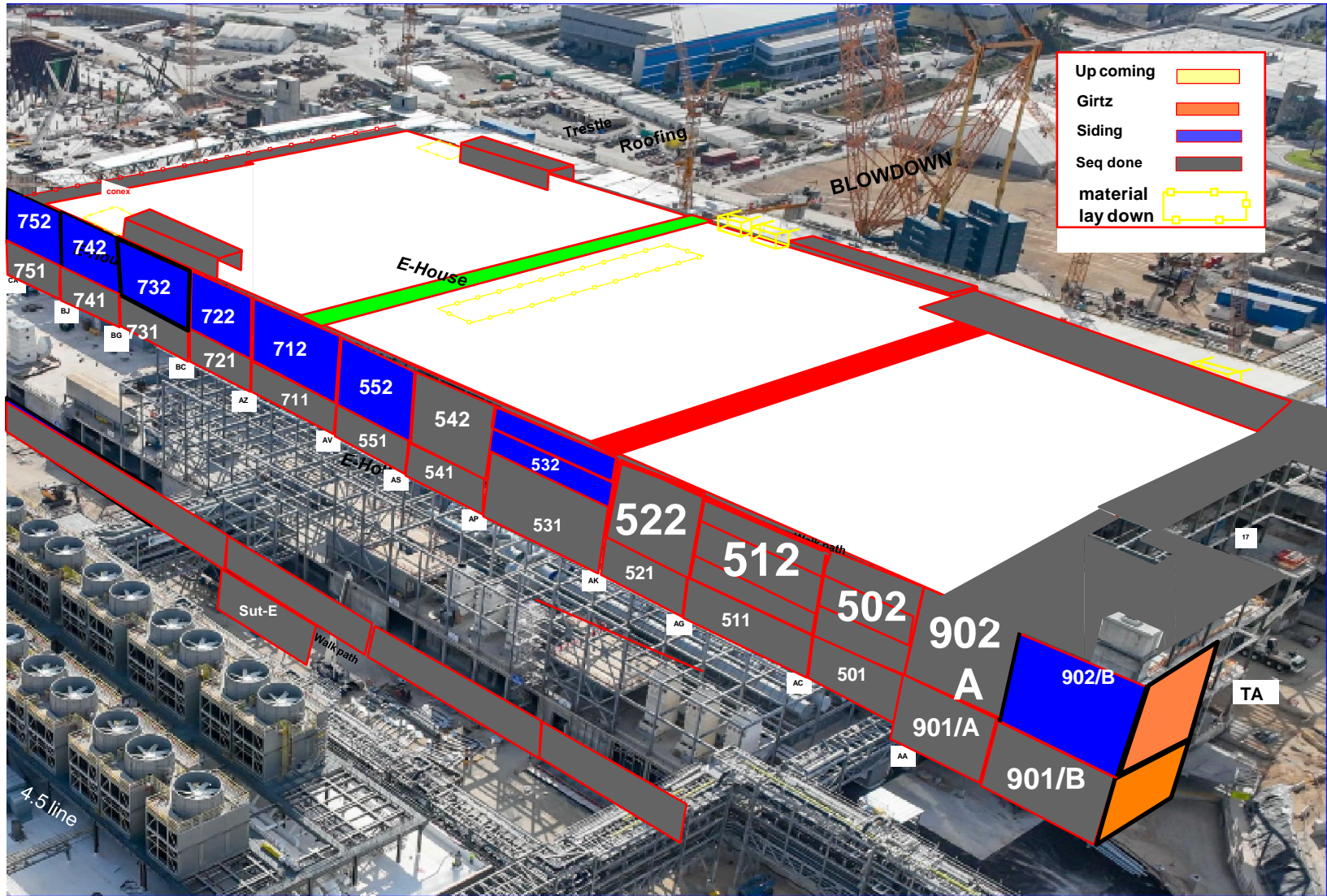


Siding - West FAB - JYG

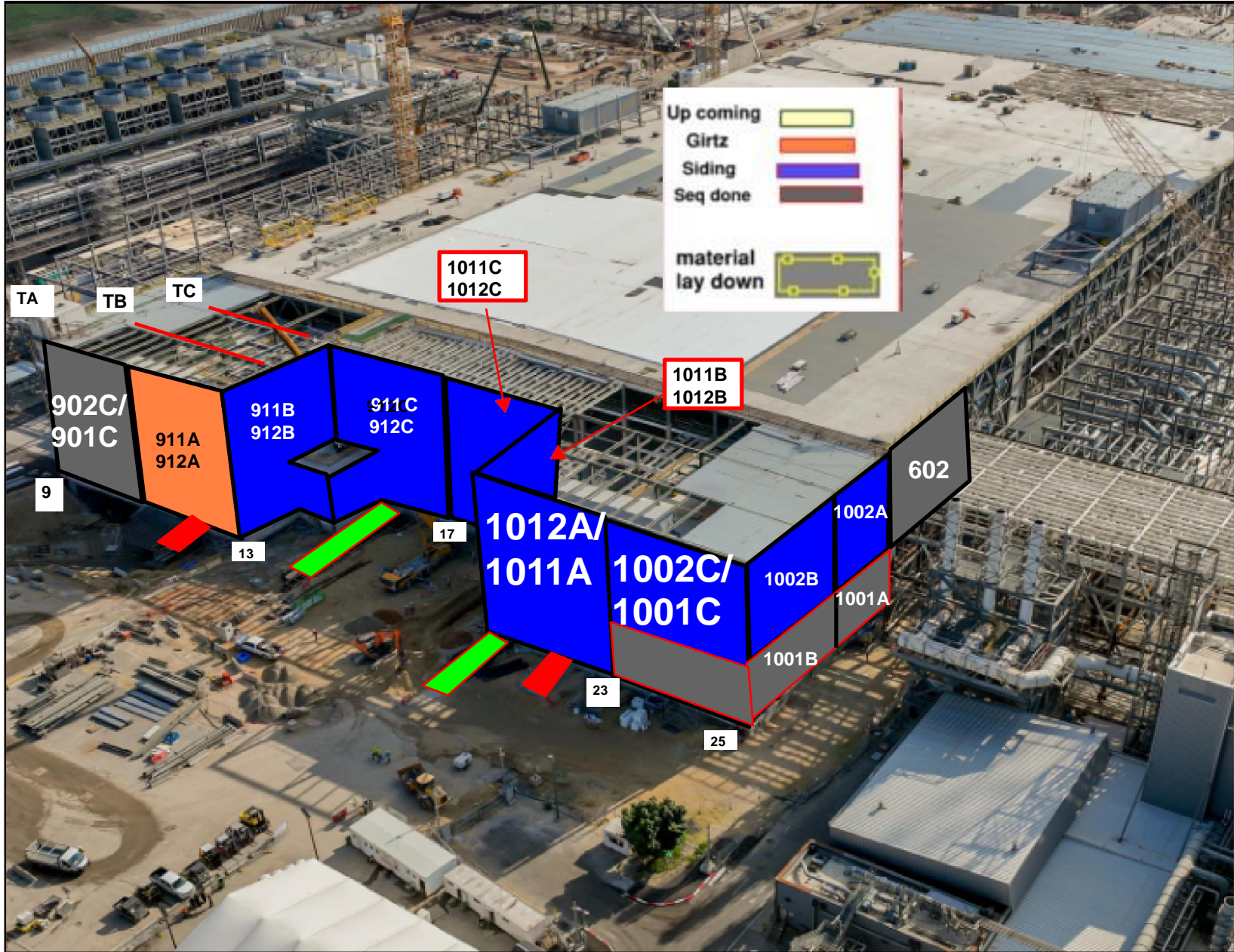
BLOWDOWN 30%

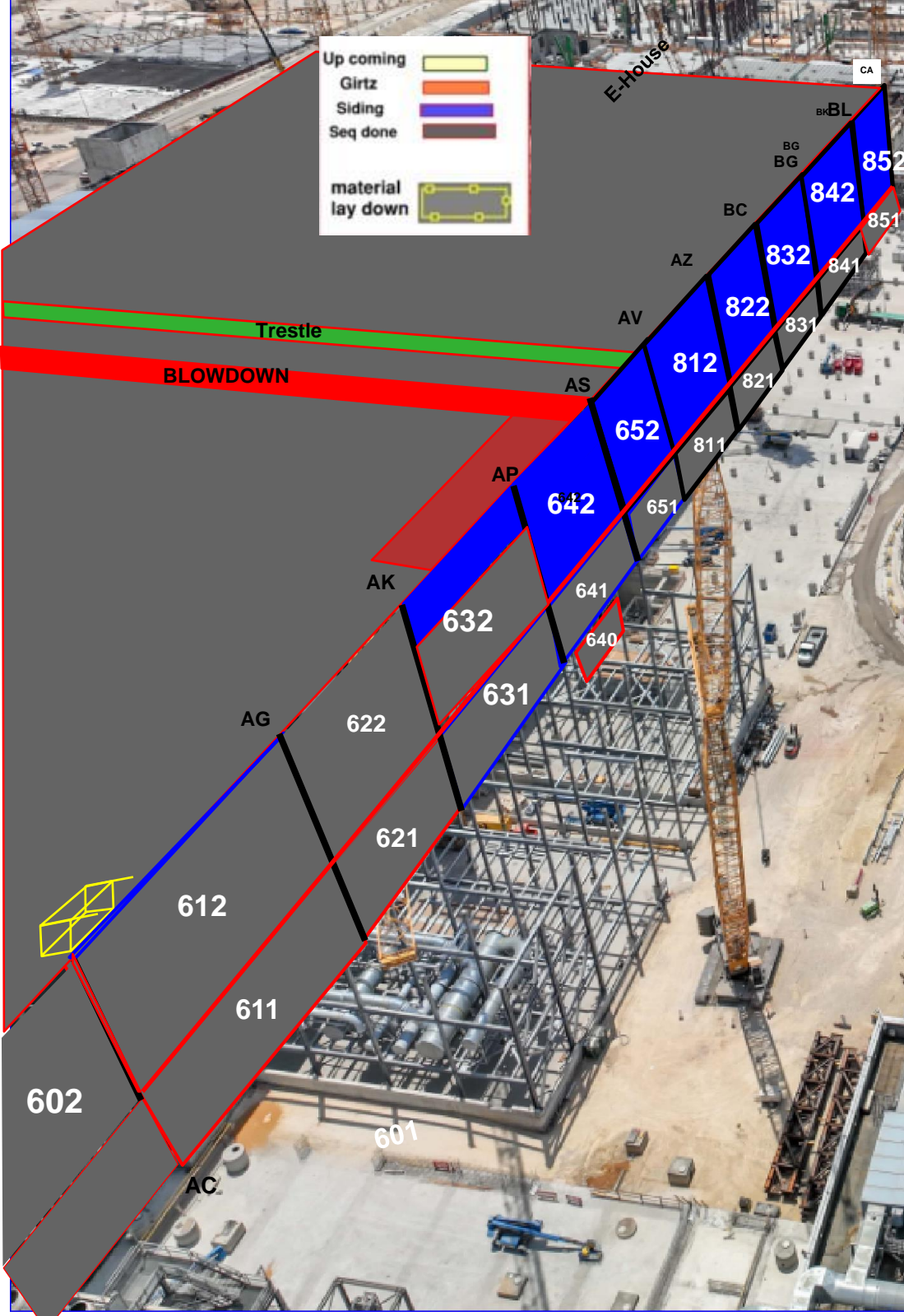
	1001 / 1002			601 / 602			611 / 612				621 / 622				631 / 632				641 / 642				651 / 652				611 / 812				621 / 822				631 / 832				641 / 842				651 / 852			
	28	28	28	15	18		31	31	31	31	31	31	31	31	31	30	31	31	31	31	31	31	31	31	31	31	31	31	31	31	31	31	31	31	31	31	31	31	31	31	31	31				
Total	21	21	10	15	18		31	31	31	31	31	31	31	31	31	30	23	22	31	29	27	24	31	31	31	31	31	31	31	31	31	31	31	31	31	31	31	31	31	31	31	31				
%	75%	100%	24%	100%	100%		100%	100%	100%	100%	100%	100%	100%	100%	100%	100%	74%	71%	75%	100%	94%	87%	87%	77%	77%	81%	81%	85%	85%	85%	85%	85%	85%	85%	85%	85%	85%	85%	85%	85%	85%	85%				
5FA	0	0	0	0	0	0	0	0	0	0	0	0	0	0	0	0	0	0	0	0	0	0	0	0	0	0	0	0	0	0	0	0	0	0	0	0	0	0	0	0	0	0				
4DA	0	0	0	0	0	0	0	0	0	0	0	0	0	0	0	0	0	0	0	0	0	0	0	0	0	0	0	0	0	0	0	0	0	0	0	0	0	0	0	0	0	0				
3FK	0	0	0	0	0	0	0	0	0	0	0	0	0	0	0	0	0	0	0	0	0	0	0	0	0	0	0	0	0	0	0	0	0	0	0	0	0	0	0	0	0	0				
3FA	0	0	0	0	0	0	0	0	0	0	0	0	0	0	0	0	0	0	0	0	0	0	0	0	0	0	0	0	0	0	0	0	0	0	0	0	0	0	0	0	0	0				
SSA SF	0	0	0	0	0	0	0	0	0	0	0	0	0	0	0	0	0	0	0	0	0	0	0	0	0	0	0	0	0	0	0	0	0	0	0	0	0	0	0	0	0	0				
UL	0	0	0	0	0	0	0	0	0	0	0	0	0	0	0	0	0	0	0	0	0	0	0	0	0	0	0	0	0	0	0	0	0	0	0	0	0	0	0	0	0	0				

Link

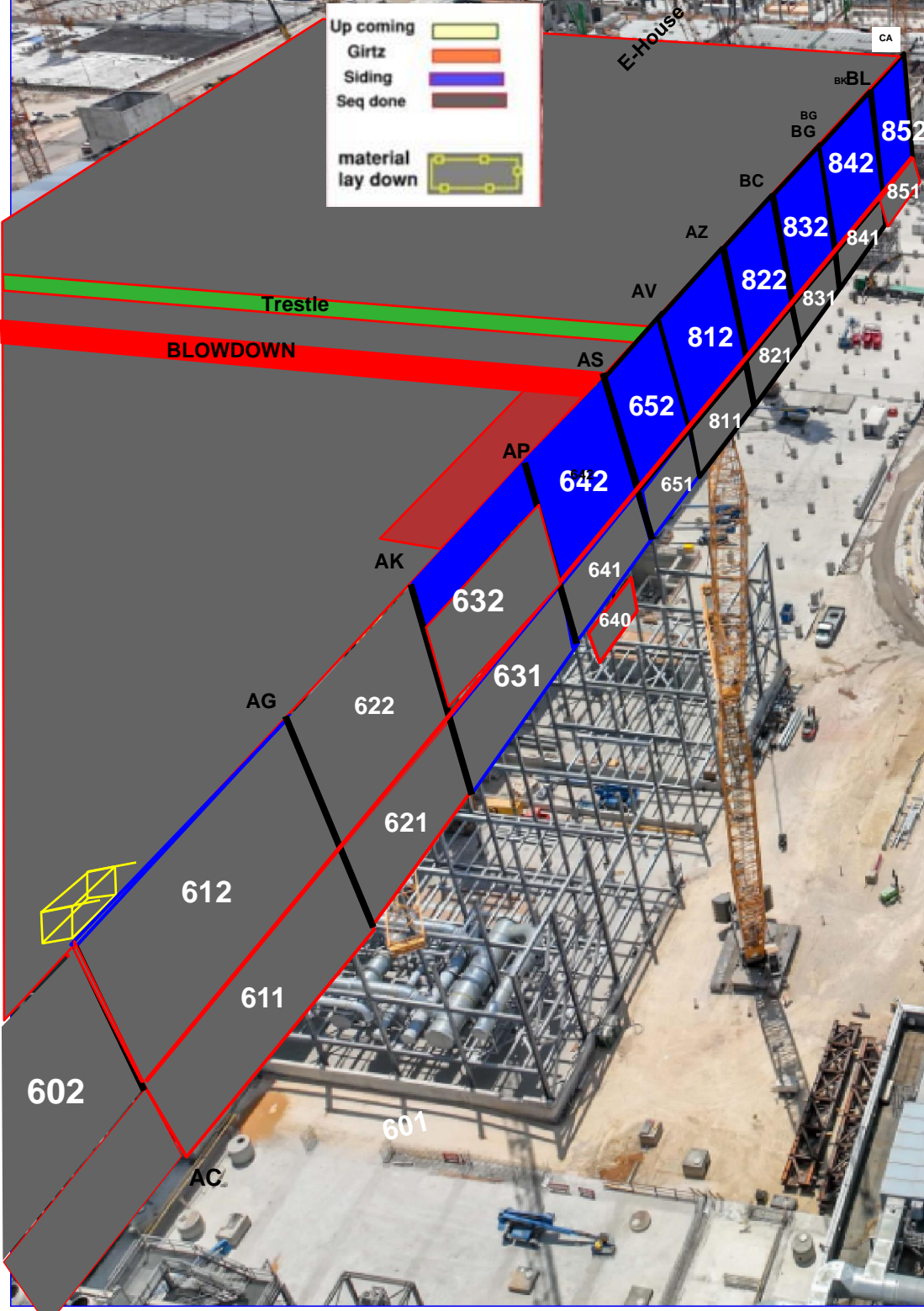


Walkpath





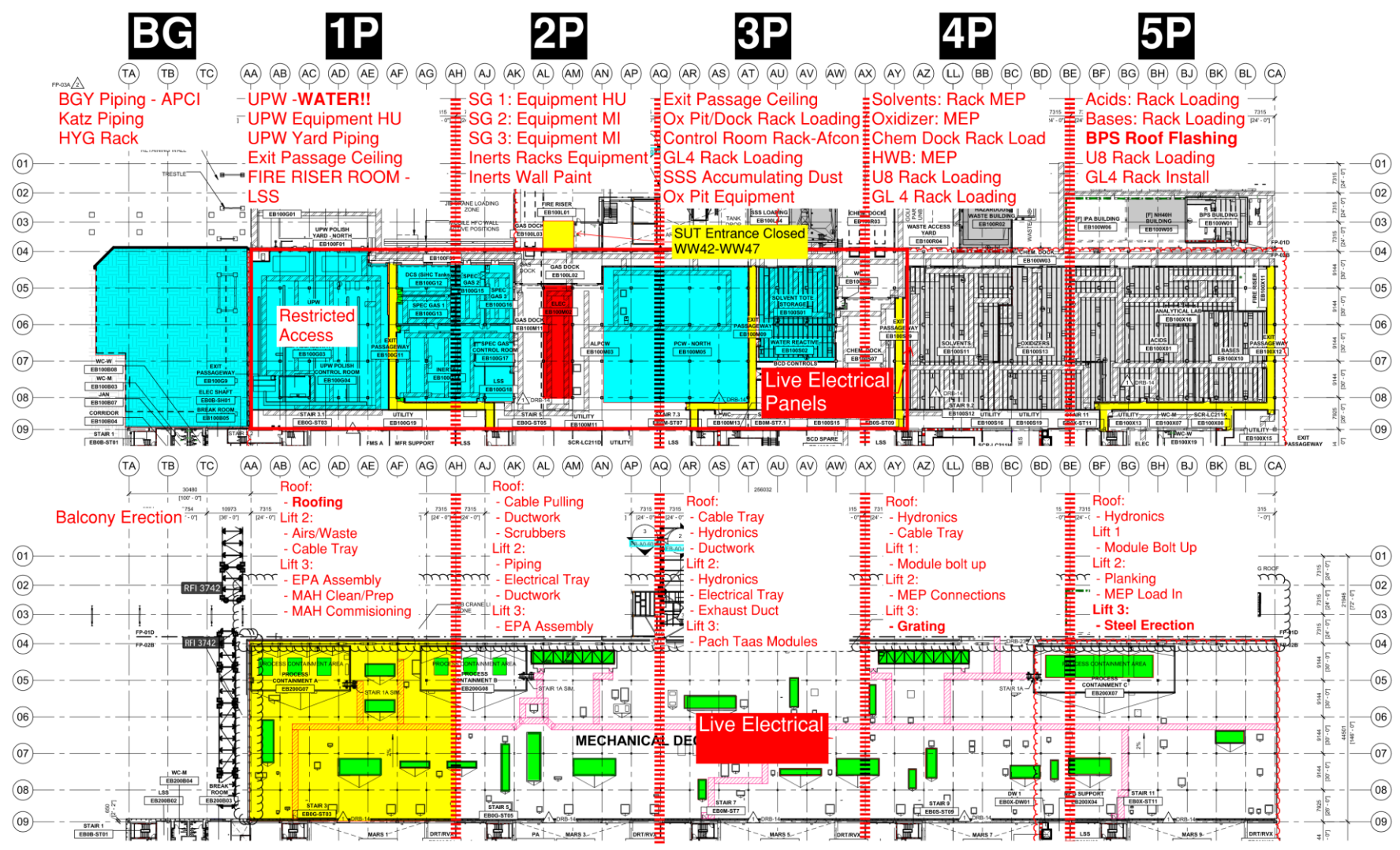
Up coming	
Girtz	
Siding	
Seq done	
material lay down	



PSSS.1

Utility Level 1YA

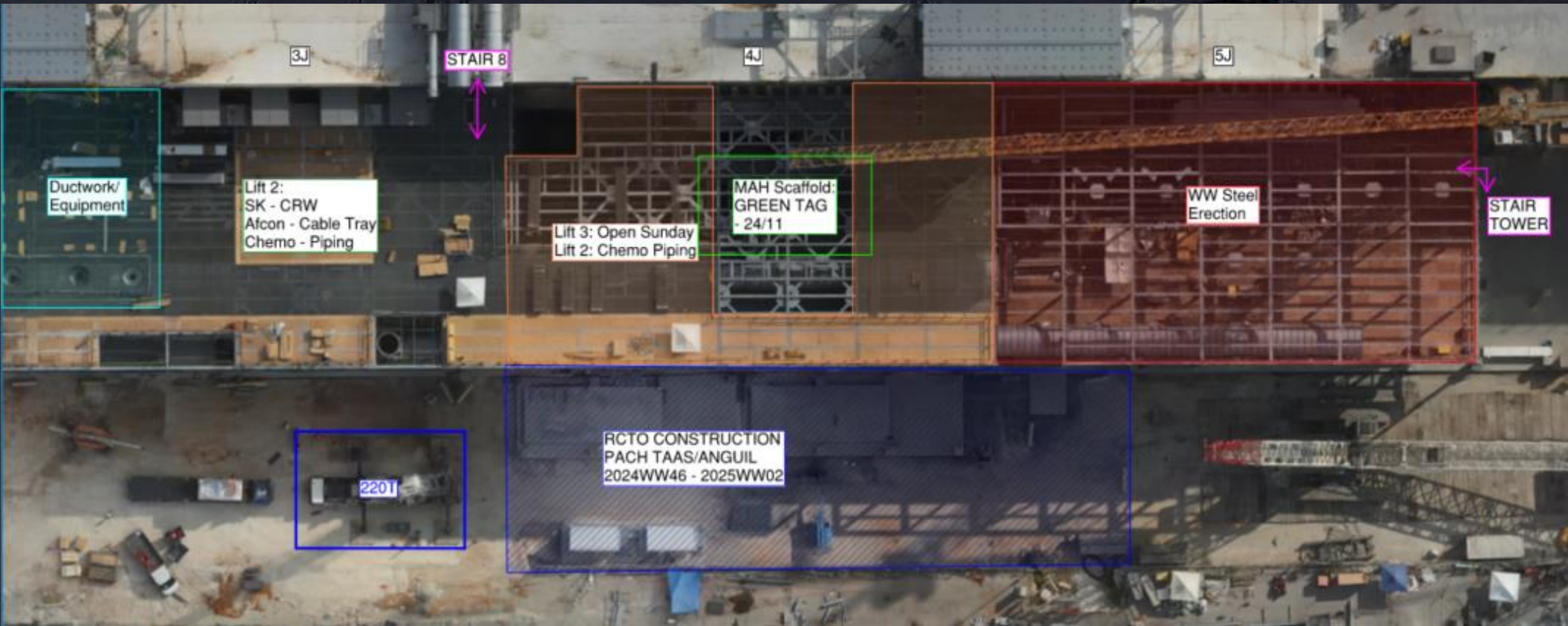
PSSS Roof 2SA



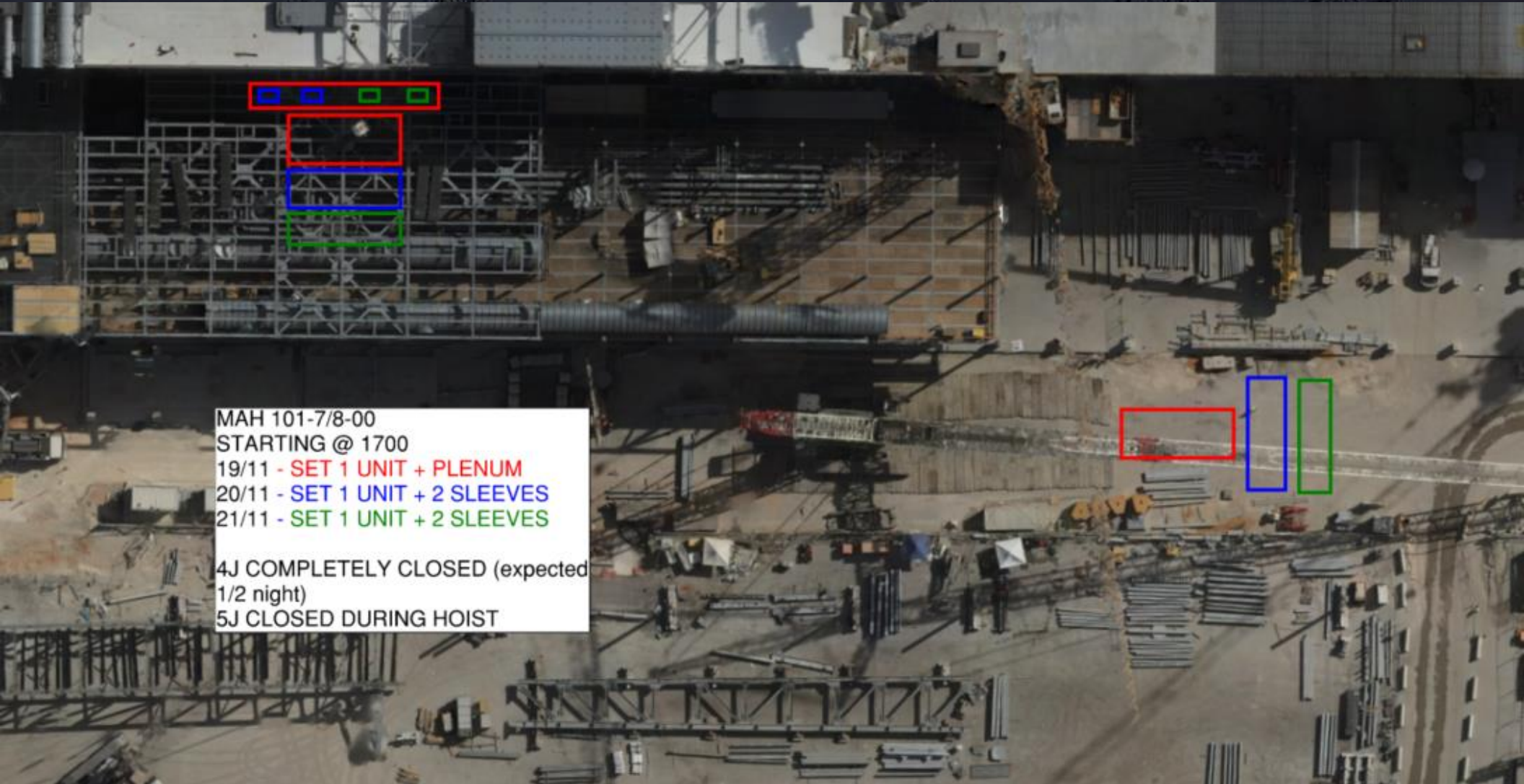
WJG 01J, 02J LIFT 2 & 3



WJG 03J, 04J, 05J LIFT 2 & 3

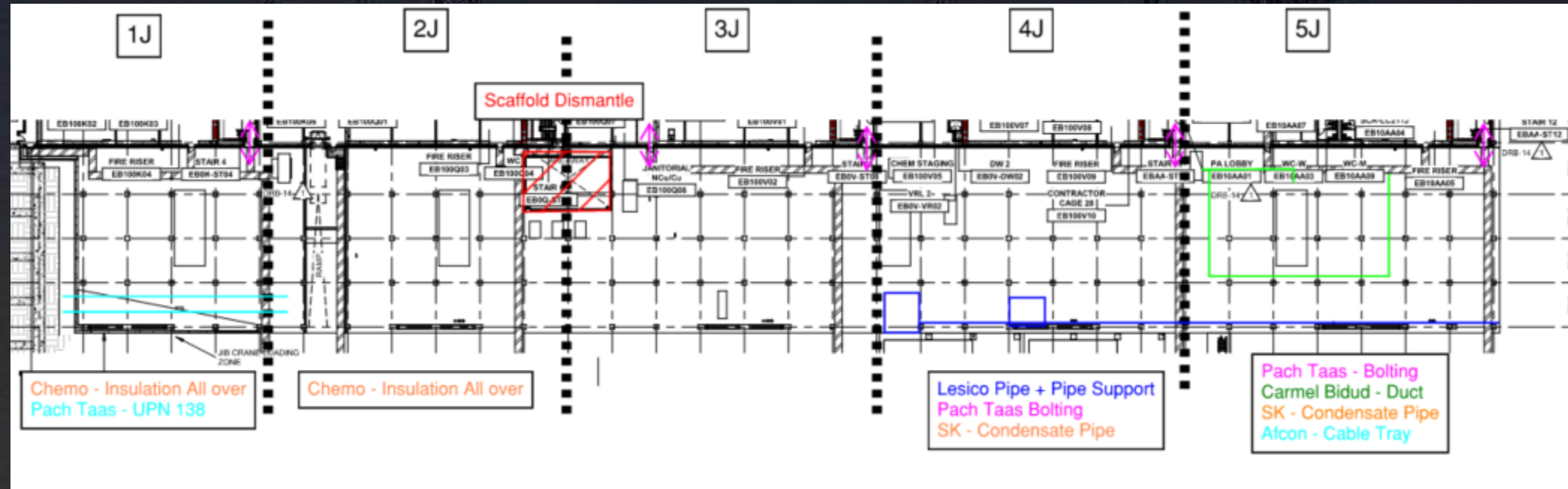


MAH101-7/8-00 Set WW47

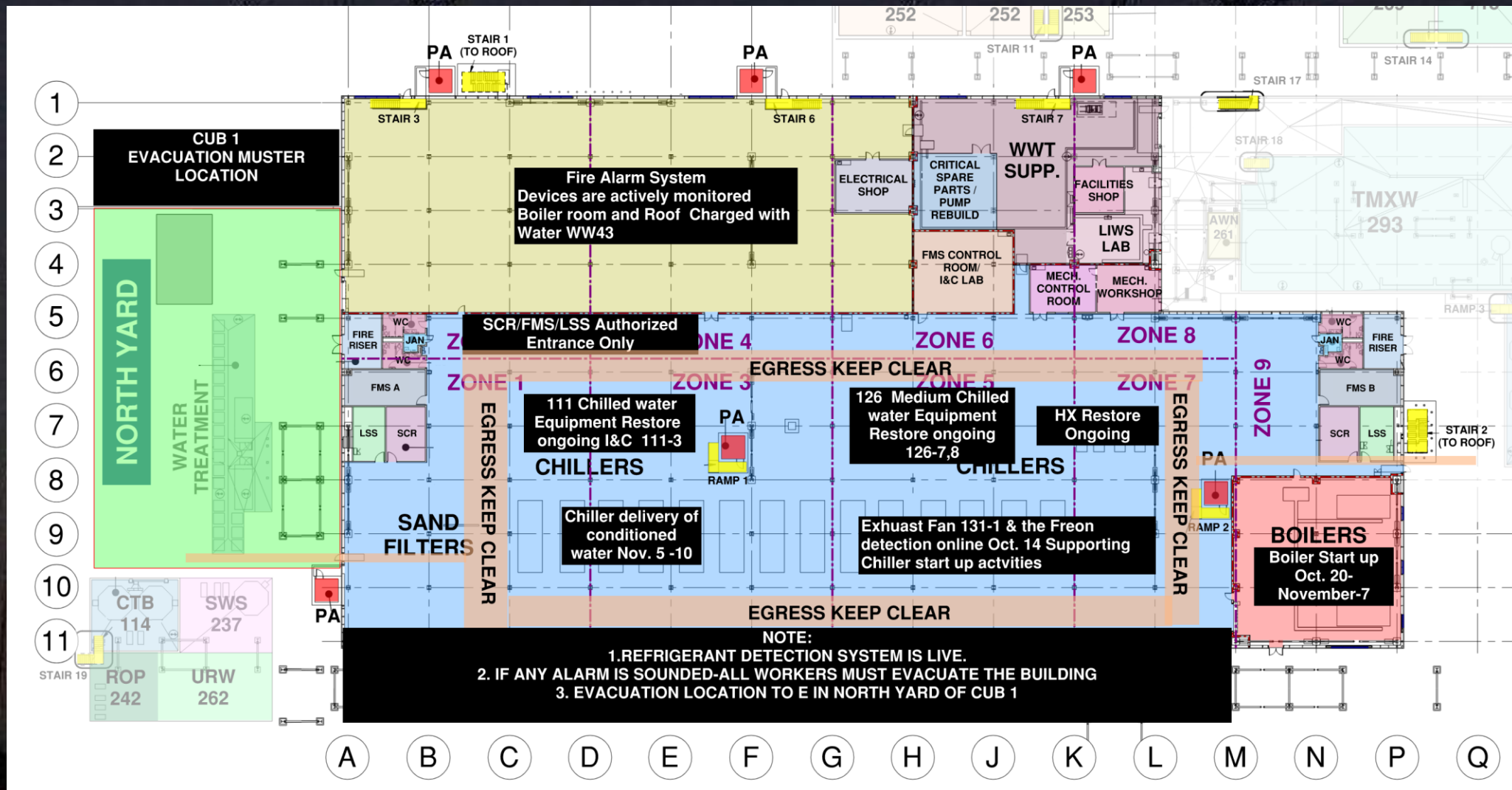


MAH 101-7/8-00
STARTING @ 1700
19/11 - SET 1 UNIT + PLENUM
20/11 - SET 1 UNIT + 2 SLEEVES
21/11 - SET 1 UNIT + 2 SLEEVES
4J COMPLETELY CLOSED (expected
1/2 night)
5J CLOSED DURING HOIST

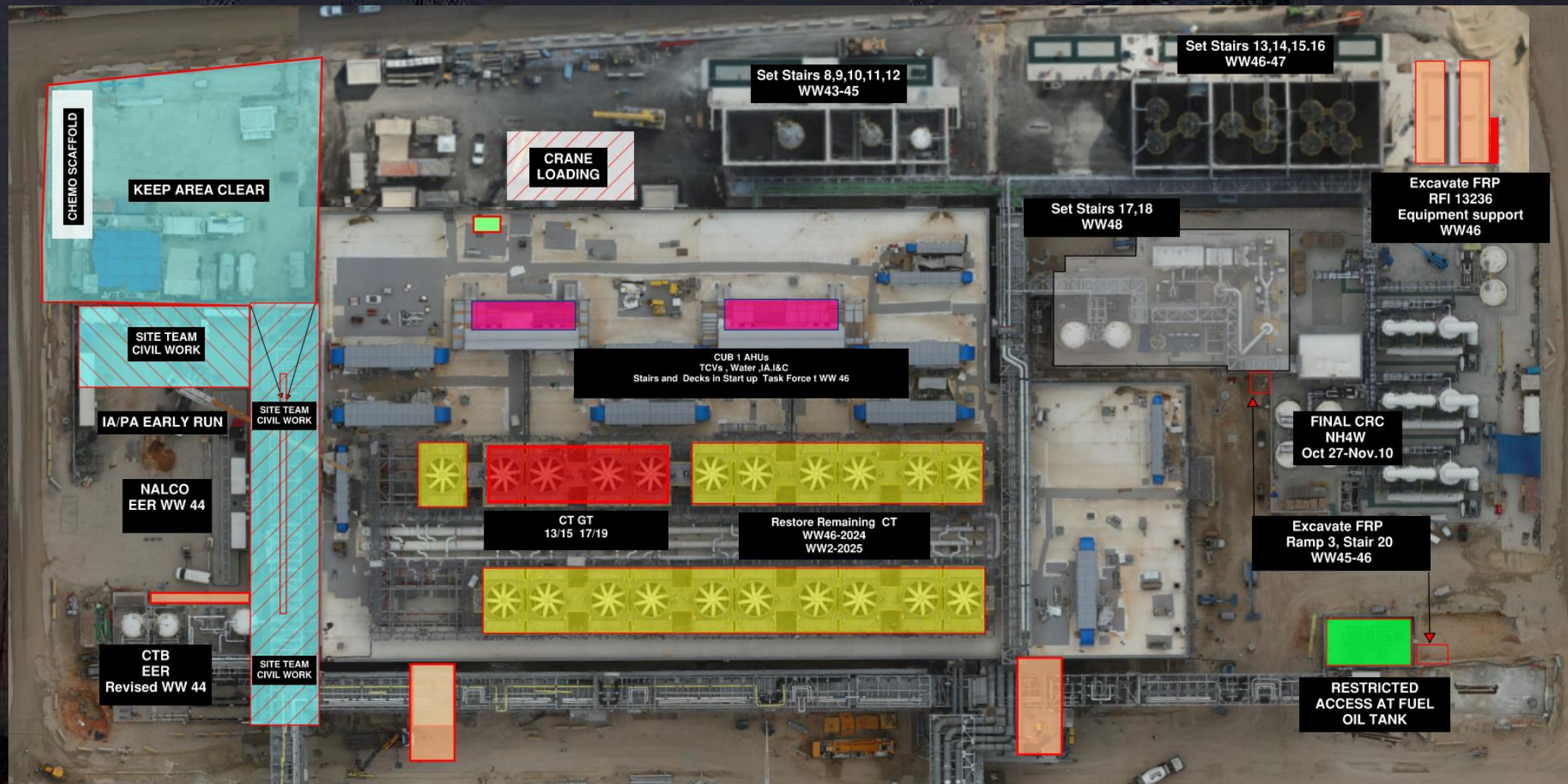
WJG UTILITY LEVEL BUILD OUT



CUB 1- Start up logisitics

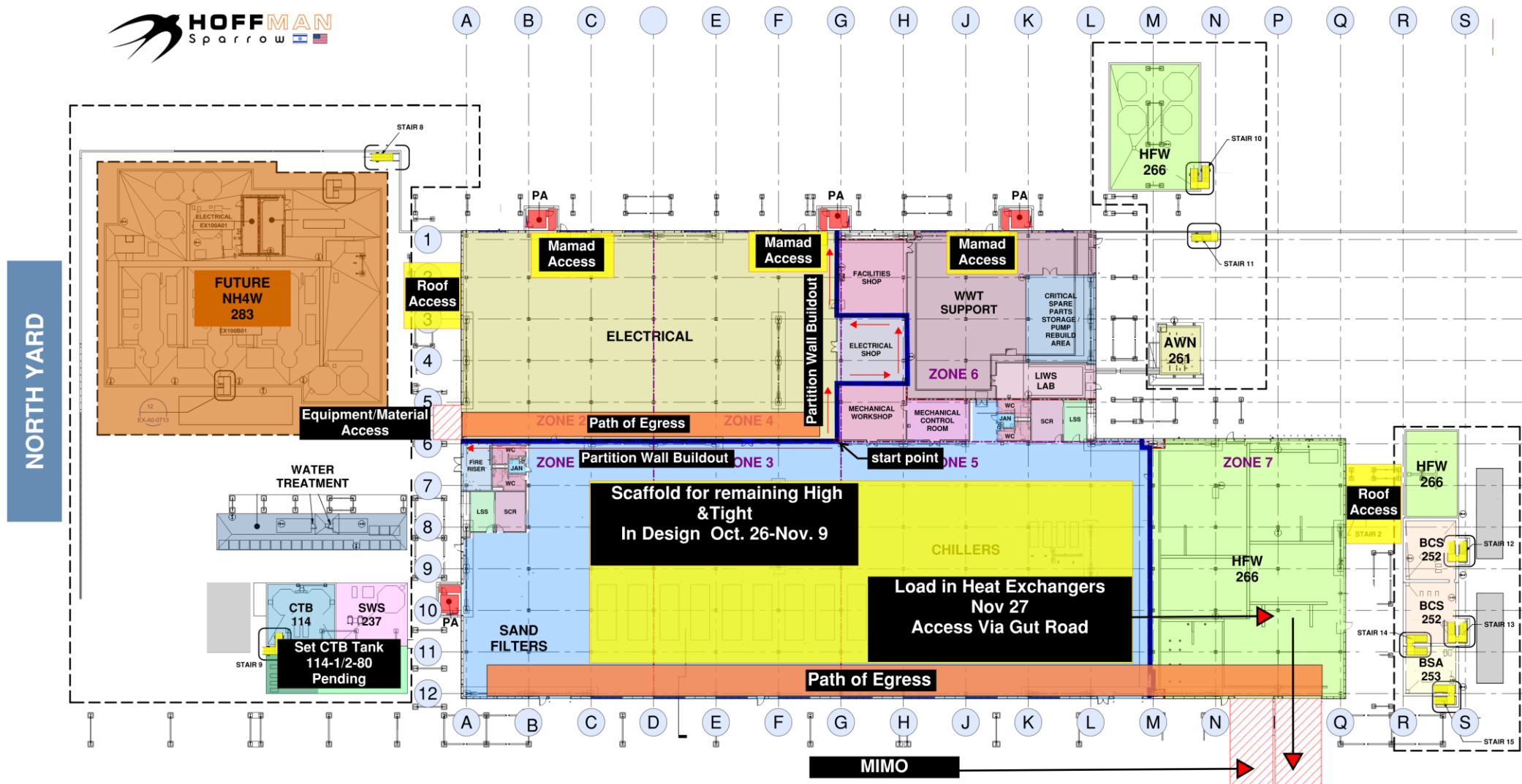


CUB 1 – EXTERIOR/ROOF

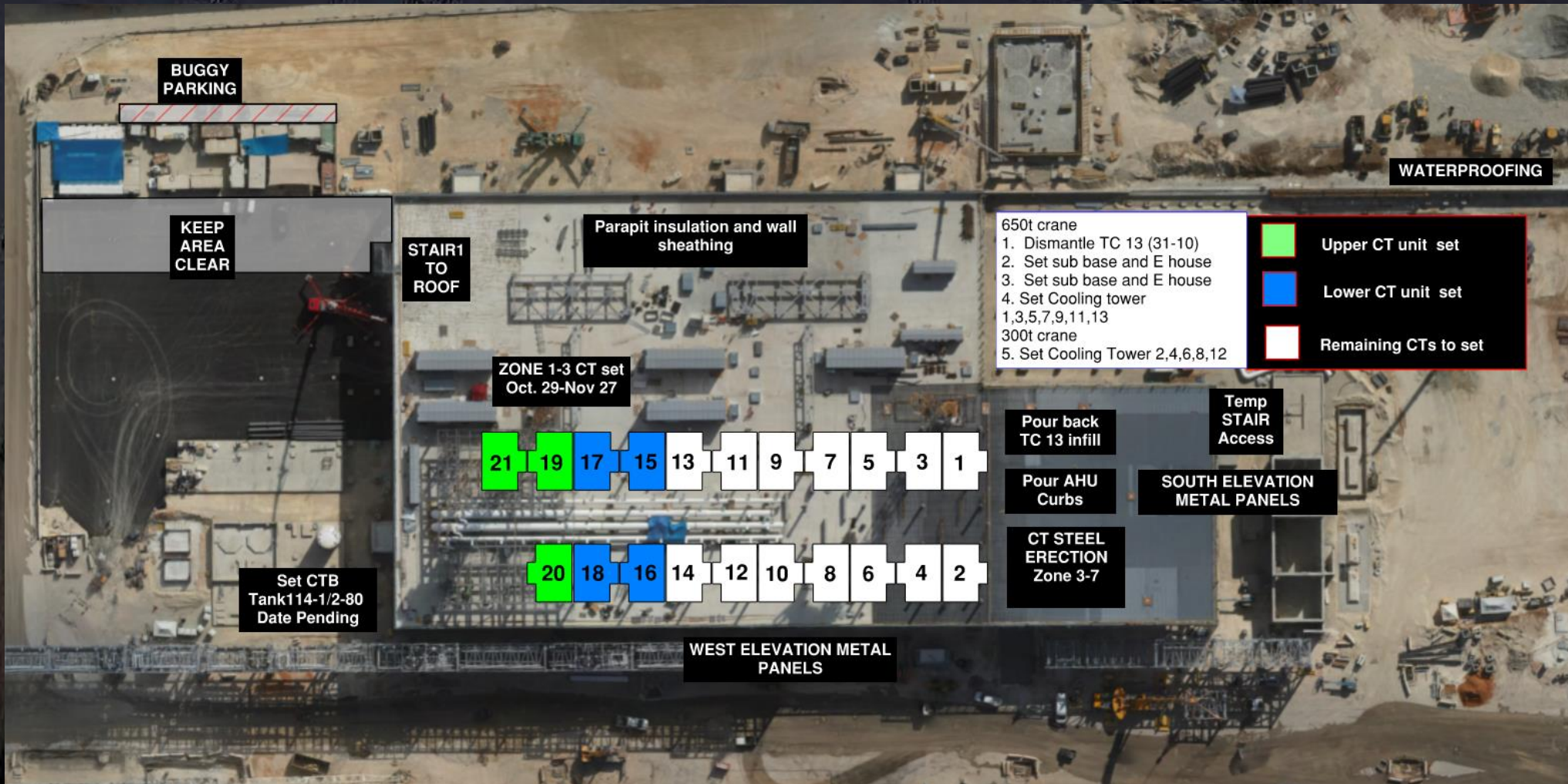


CUB 2- Load in and H&T

CUB 2 COORDINATION MAP



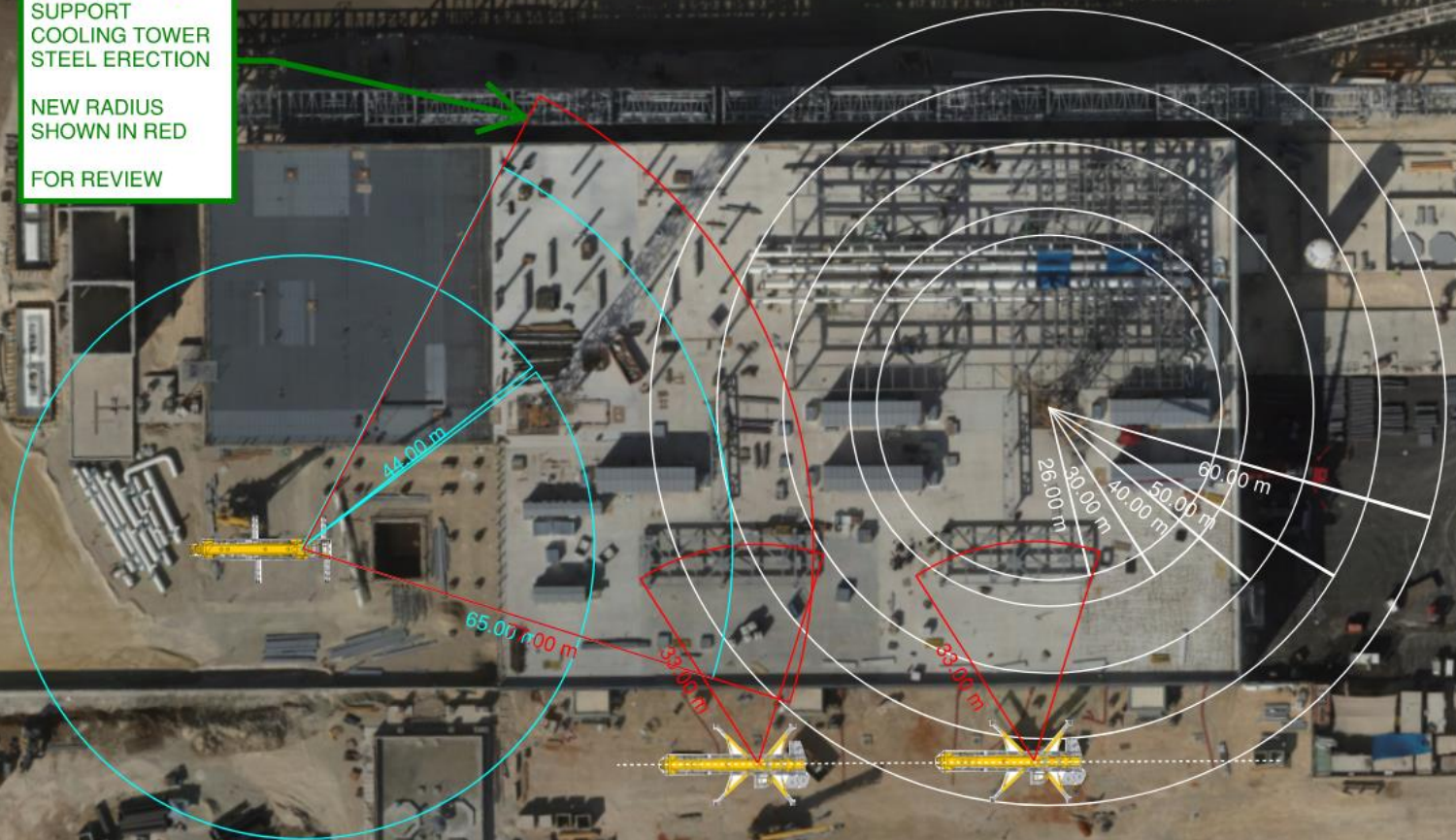
CUB 2 – EXTERIOR/ROOF



CUB 2 – Crane Logistics

PROPOSE TO ADD
12M JIB
EXTENSION TO
SUPPORT
COOLING TOWER
STEEL ERECTION

NEW RADIUS
SHOWN IN RED
FOR REVIEW

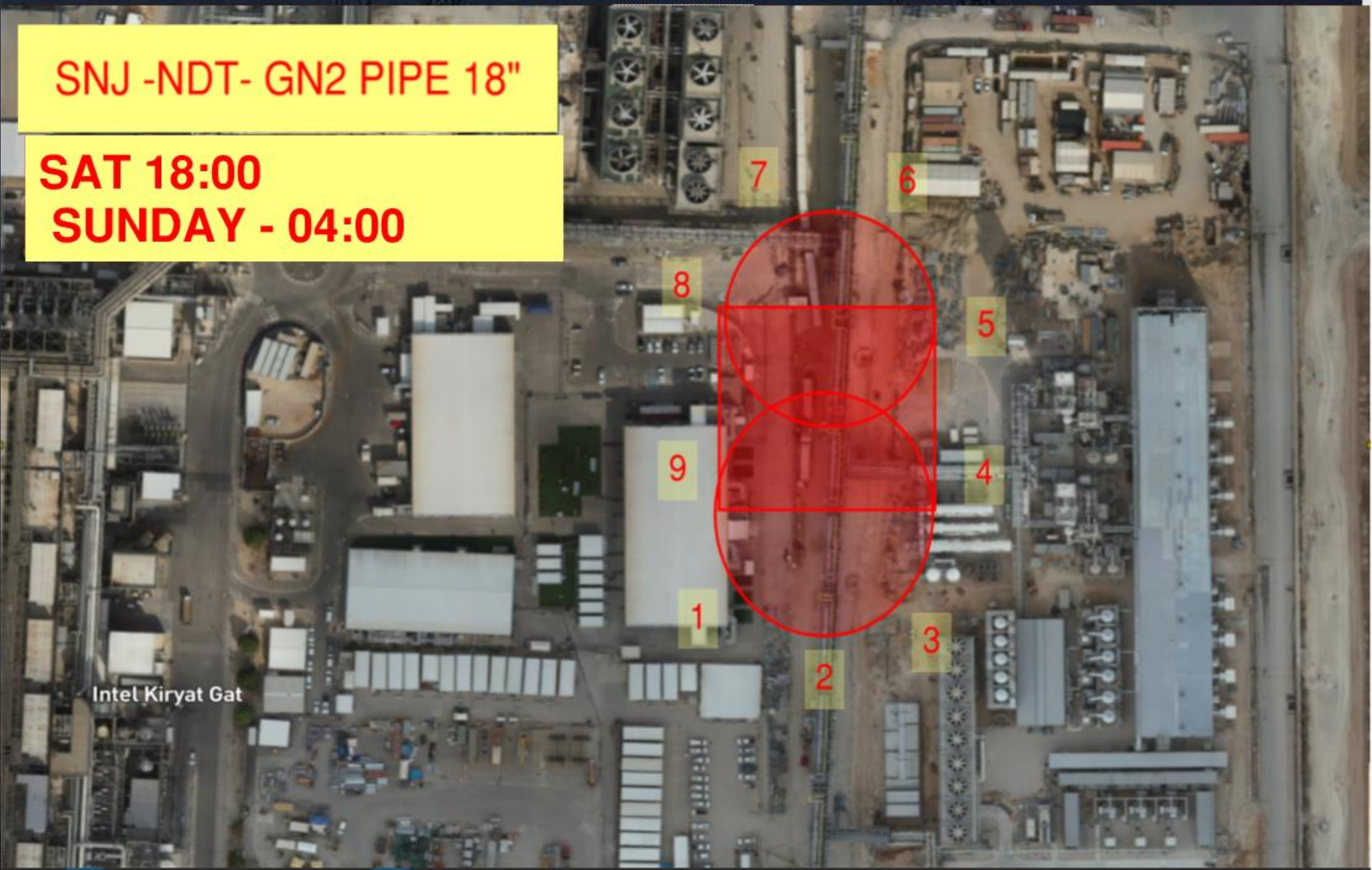




SNJ -NDT- GN2 PIPE 18"

SAT 18:00

SUNDAY - 04:00



Intel Kiryat Gat

Daily Coordination Meeting

Site Logistics

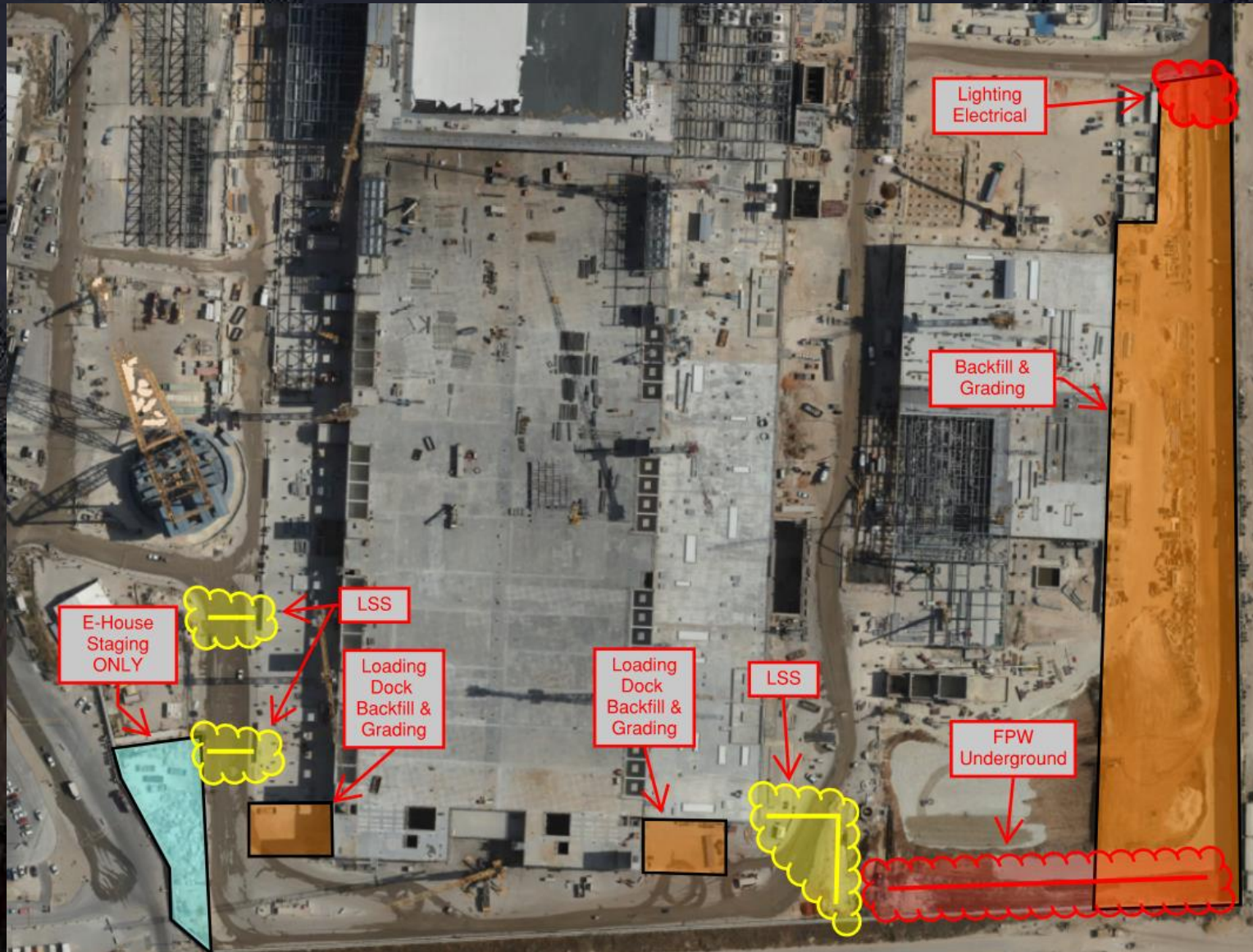
North



Daily Coordination Meeting

Site Logistics

South



Deviation from the Plan

- Do your crews know the process that you expect them to follow if they discover that either a plan isn't working or that changes need to be made to the plan?
- What are your expectations from your team leaders when they make changes to plans that you have approved?
- Is there a process for that plan to be rechecked before they continue?
- Do your crews understand the hold points for their work? Have you identified hold points?
- If you tell your crews to follow the plan, but don't give them direction on what they need to do when that plan isn't working, they will simply deviate and you won't know about it until there is a problem.
- Simply telling them to update the PTP may not be appropriate for all changes or all operations. Do you think they understand when that is appropriate and when it isn't?

HCC/EHS Weekend Work- 22.11.2024

White Board Meeting in Beavers at 06:30

Superintendents

Elaina Farley 052-6043861

Mohammad Hassan 052-2342880

Roi Zaidin 052-2146194

CSA CM

Ilyssa Ingenthron 052-5732553

MEP

Andy Jollands 052-9659290

Michael (Mikhail) Klyuchik

David Jollands 052-3961675

Dave Sooter 052-4121028

Troy Odella 052-3217034

Crane

David S 050-3028055

Safety

- Safety Foreman- Mohammad Zakakti- 054-8121212 Mohammad-Zakakti@Hoffmancorp.com
- Safety Assistant- Gaber Aloka-050-2238719 Gaber-Aloka@Hoffmancorp.com
- Safety Professional- Ron Miara- 050-4555854 Ron-Miara@Hoffmancorp.com

Subcontractor Weekend Work- 22.11.2024

FAB

Utility Level / Roof / Stair Shaft

EIram

Foreman: Shlomo 0545551702

Ehs: shy 0523632132

Afcon electrical

Ehs Steven 0559129333

Foreman Perdit 0552742935

SK

Ehs Om 0542072285

Foreman Shy 0545654760

BELFOR

Foreman Lior 0544980720

EHS Barak 0542262530

Subfab

Pach Taas

AHw Penetration

Tomer: 0507670585

Afcon E

SF E LSS rooms, 17L

Avi Eli 0526008487

W&W Elevator

Nick: 0524074972

Chemo

TTNE RSTM

Tommy: 0523759408

SELA MOD2

Avihen: 0548155302

Clean Room

Talad – CR 1W – UPN Install, 4E Grating

(EHS Marcelo 0523540242, Super Igor 0544509386)

Sig – 5W INT 4W, 3E Handrails

(EHS Beni 0506232032, Super Shmulik 0549205966)

Elram – CR Level 9,25 line columns , upper shaft wall, TB-

TC/25 Columns (EHS Royi 0538312234, Super Bonio

0544236899)

Afcon – CR – 2E boxes 2W module, 5W supports, 3E

lighting, 1W -1E cable pilling

(EHS Lokanath – 0559652398, Supervisor Pradeep -

0552742935)

Rolling Plains – INT NTT 5RA, Marshaft 3E, 5RA, MOD2 CA

CD17,24,10 (Super Cordin 0546594273, EHS Ovidiu

0546993648)

Chemo – INT -TNTNE/W Supports, 1E Mars prep for PT ,

1W Mars

(EHS Lila - 0547886704, Supervisor Winai – 0528090588)

Talent – CR Level 1E/2E – Superclean

(Supervisor Netanel 0536210487 EHS –

Hasan 0542662054)

Sela – 1E-1W CRC

(Supervisor Avihan 0548155302, EHS Sergey –

0526650046)

Subcontractor Weekend Work- 22.11.2024

PSSS

Pach Taas – Module bolting PSSS Roof, Lift 2 1-3P

Foreman – Vadim – 053-5552472

Safety – Offek – 050-2161429

Afcon Electrical – Cable Tray and Cable Pulling 1-5P UL and 1-3P Roof & Lift 2

Foreman – Charles – 055-2740190

Safety – Stevan – 055-9129333

Chemo A. – PSSS Roof and Lift 2 1-5P

Foreman – Maor – 050-955-9071

Safety – Rotem – 054-447-7112

W&W – SEQ 135, 138 (lift 3 3P)

Foreman – Willie – 052-6145521

Safety – Gary Lambert – 1-405-833-8910

Elram – 1P and 2P Exit Passage Ceiling

Foreman – ???

Safety – ???

HSAI – 1P Scrubber Containment

Foreman – Dave – 052-4121028

Safety – Hiam

SK Engineering – GL4 Rack UL, Lift 2 2P Piping

Foreman – Marcela – 054-5210133

Safety – Marzuke – 054-447-7112

WJG

W&W – Steel Erection 5J lift 2 Erection / Detail Work

Foreman: Brian 052 4247131

Safety: Tony

Afcon – Lift 2 and Utility Level Cable Tray

Foreman: Montu 055 911 6973

Safety: Pradeep 055 274 2935

Chemo: 4J Lift 2 Piping

Foreman: Maor 050 988 9071

Safety: Erez 054 971 6840

SK: Lift 2 Piping

Foreman: Taufik: 054 94333592

Pach Taas: All over

Foreman: Tomer 050 767 0585

Safety: Jad 050 5405016

Carmel Bidud Scaffolding 4J

Foreman: Muayit

Subcontractor Weekend Work- 22.11.2024

CUB

Chemo Aharon CUB 1:

Dudu – 0509808846

Albert – 0508573970

SKE CUB 1:

Reynato – 0548991623

Marzuk – 0548830263

Sami Najami CUB 1+2:

Ibrahim – 0549571402

Husein – 0526917461

Alon – 0509895008

Meptagon I+C CUB 1:

Sergey – 0537981592

Genadi – 0546785106

Sela CUB 1:

Avihen – 0548155302

Sergey – 0526650046

HIS CUB 2:

Sergey – 0552728807

Trestle

SNJ:

PIPES – 12 workers UB CUB+ T30

STEEL – 6 workers UB CUB FORMAN

BASHIR - tel. 0527364996 SAFETY TRESTLE

Alon Matan tel. 050-989-5008

GIS/NEY

Site

Derech Afar – Shotcrete wall

Supervision = Raed: 054-244203

EHS = Alex: 054-5403849

Olizki – Sweepers and water trucks and offload 18

Supervision = Or: 052-4917313

EHS = Ben: 052-4033565

Daily Coordination Meeting



14:00 Sign In