

Daily Coordination Meeting



14:00 Sign In

Daily Coordination Meeting

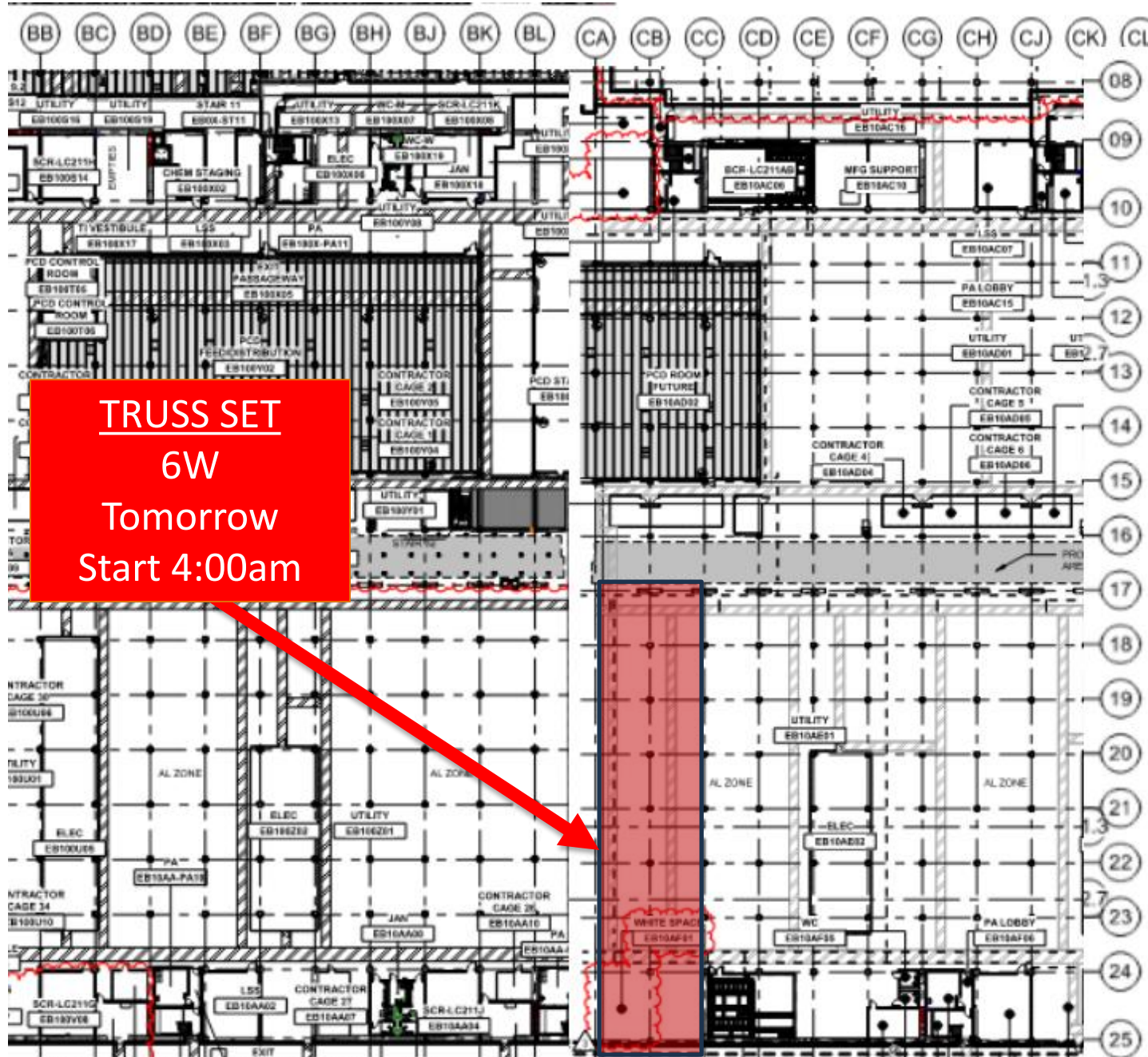
General Topics:

- Recent working at heights incidents
 - ○ Tool tethers
 - ○ F5
- • Power in Fab this week - 33kv
- • Buggy stickers (see QR code)





UTILITY LEVEL MOD2



TRUSS SET

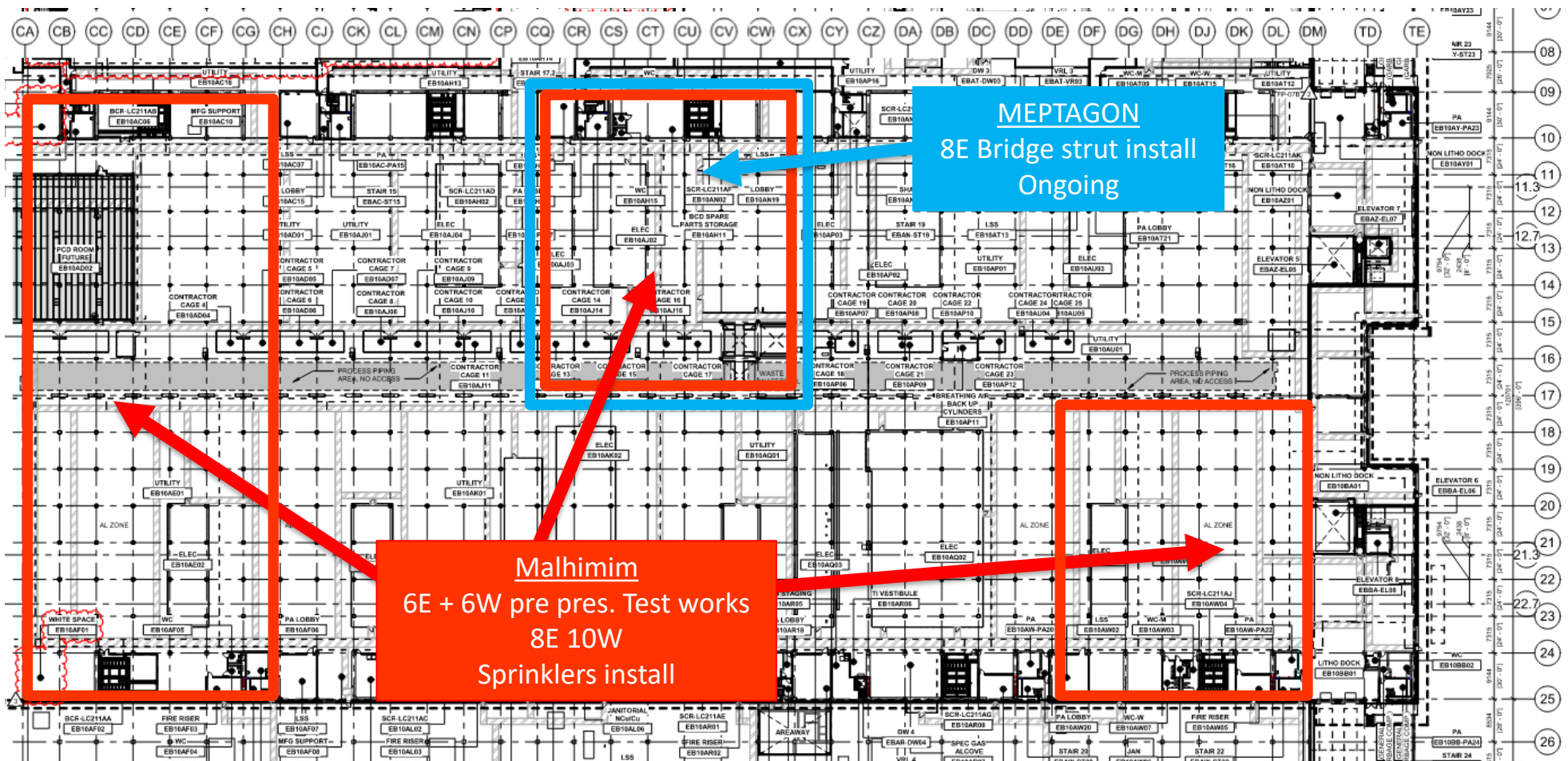
6W

Tomorrow

Start 4:00am

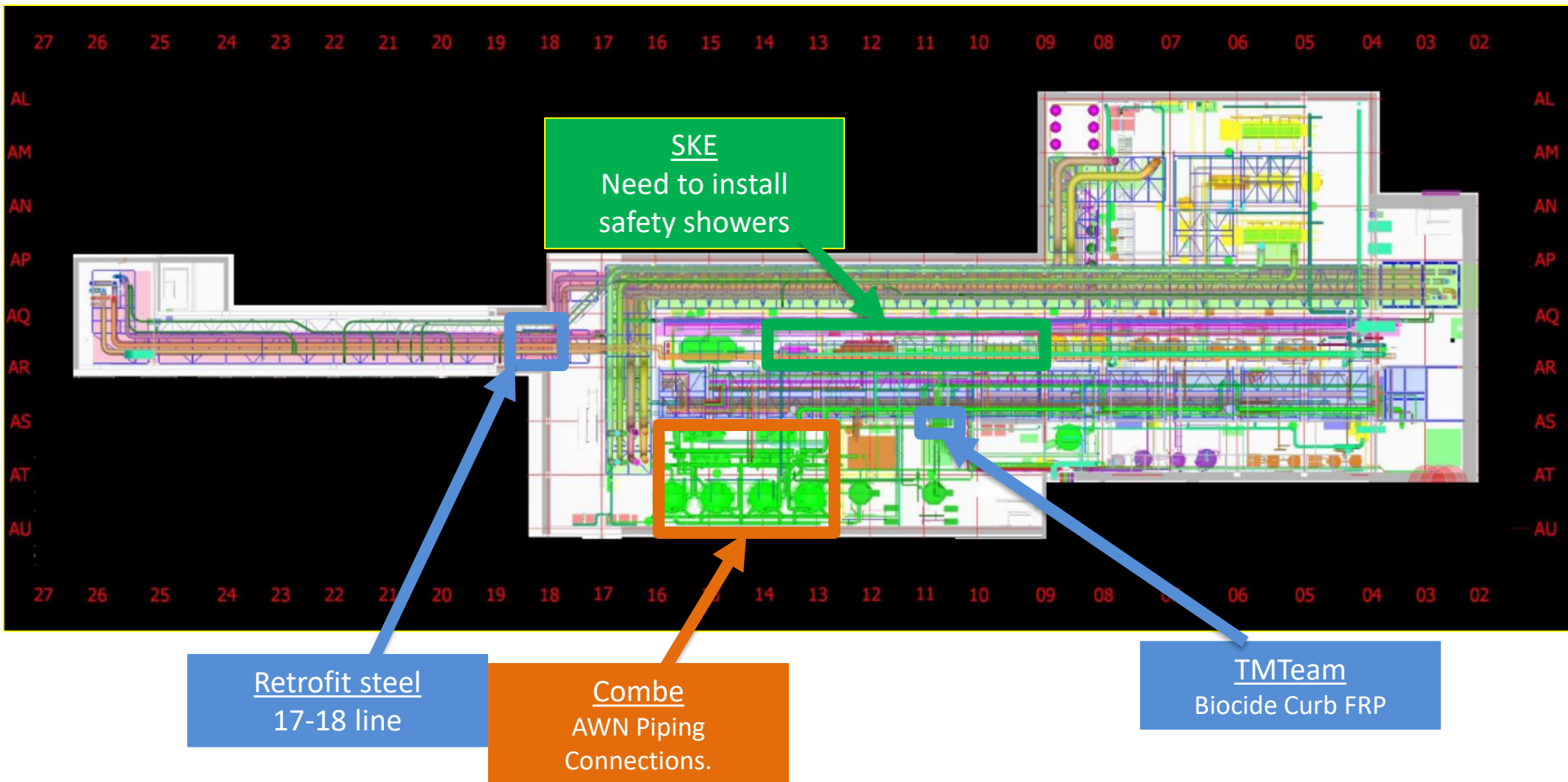


UTILITY LEVEL MOD2



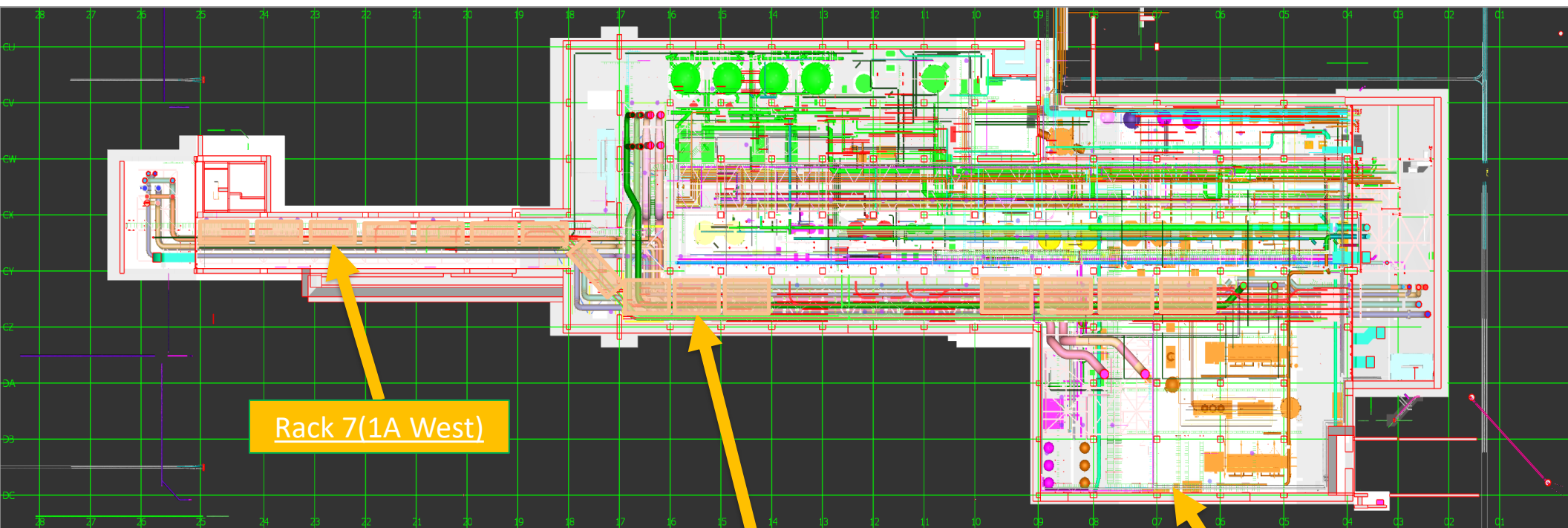


SUT 38.1 LEVEL





SUT 38.2 LEVEL



Rack 7(1A West)

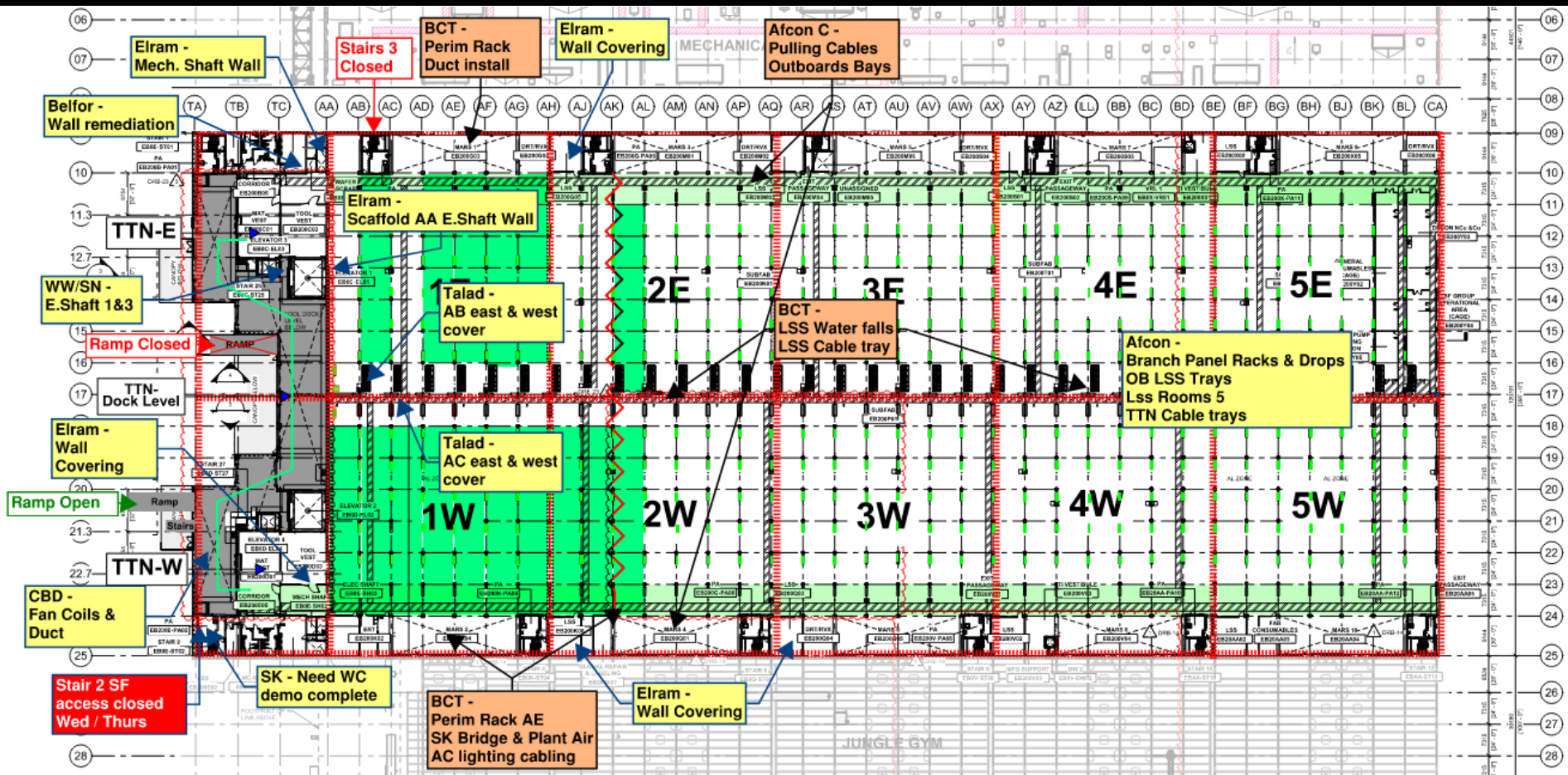
1A Rack
Lifting

8 Rack

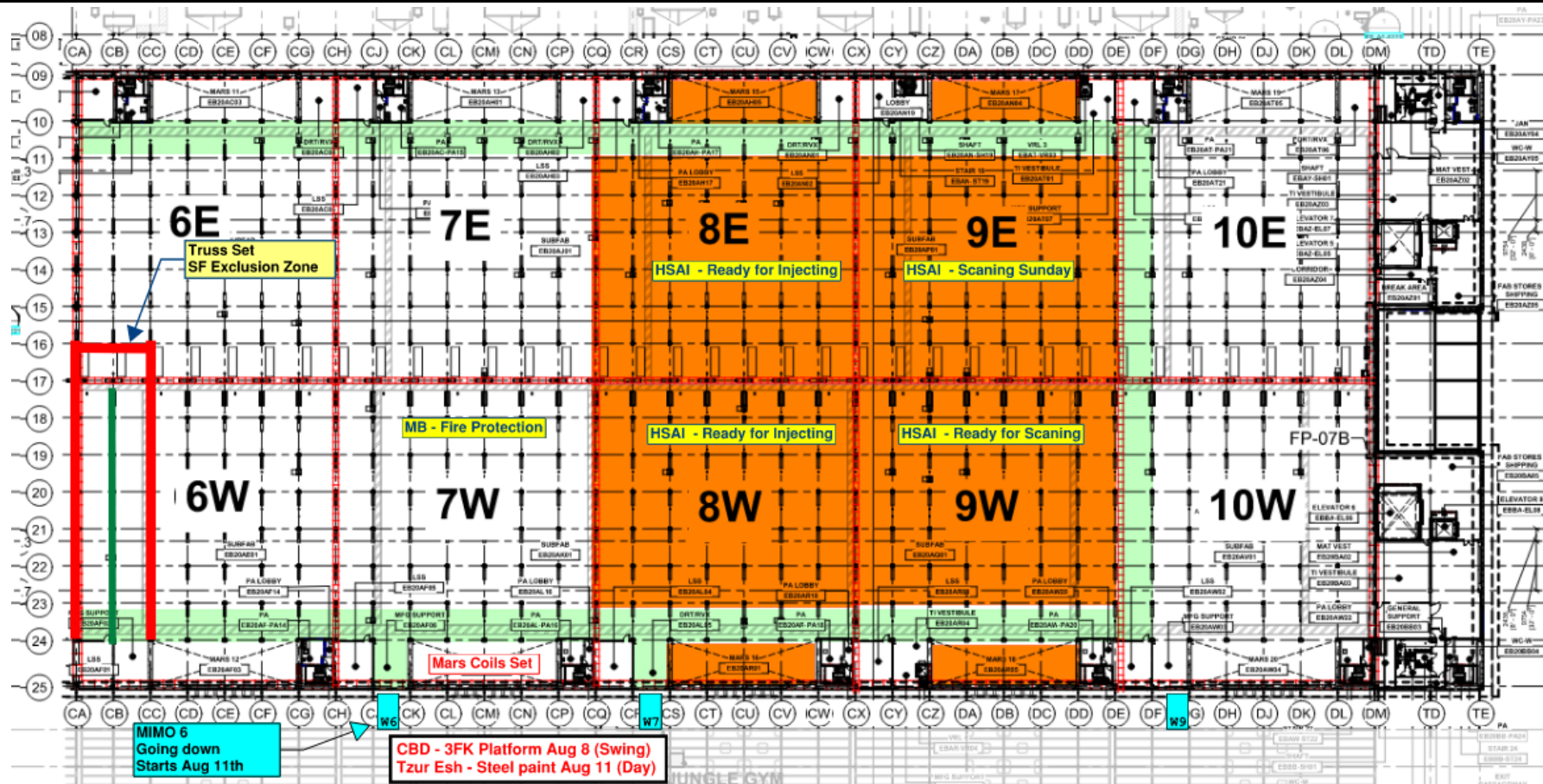
SKE
H&T
CRW
Move-In date ?

Vesda
H&T

SUBFAB BUILDOUT MOD 1



SUBFAB BUILDOUT MOD 2



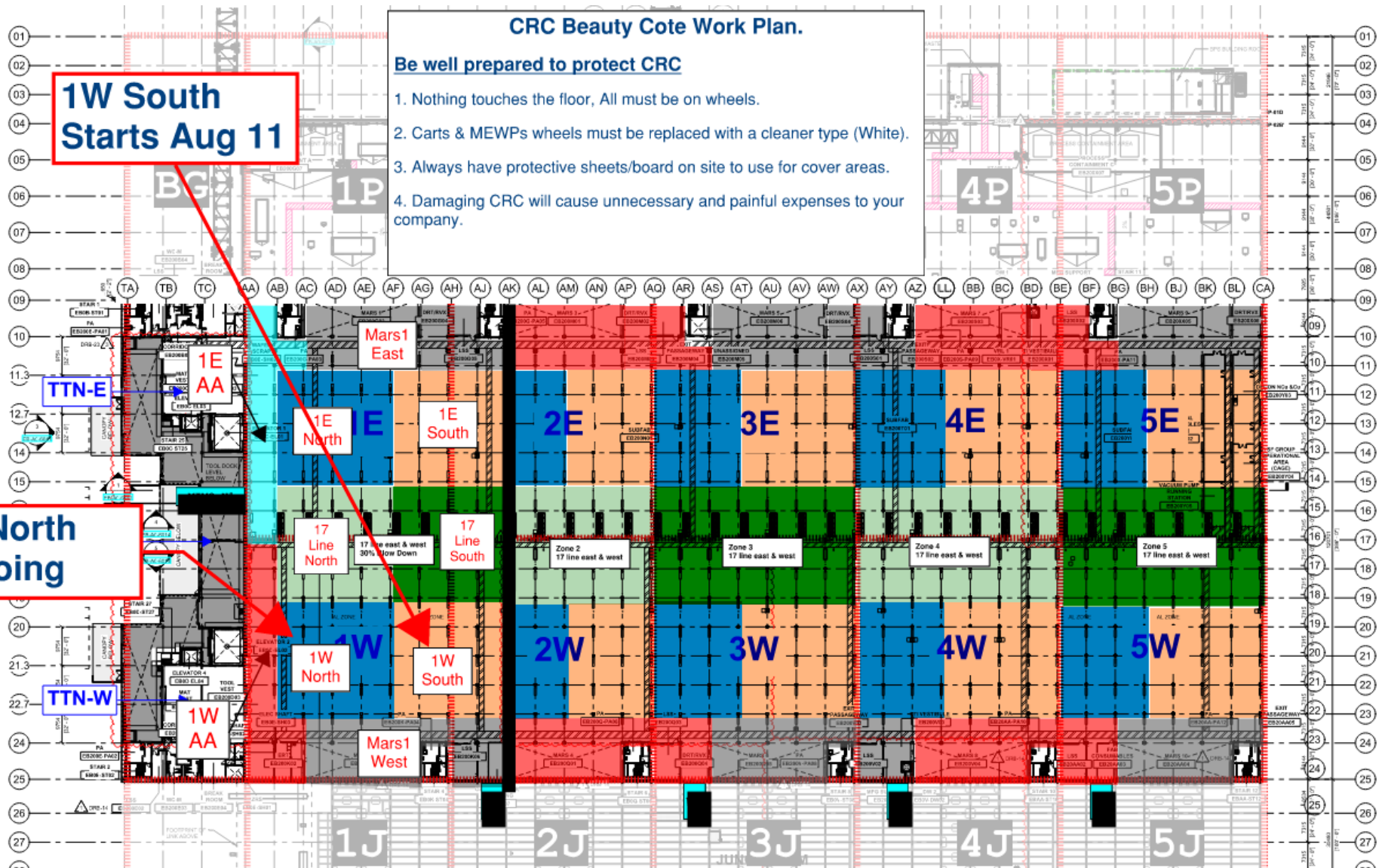
CRC Beauty Cote Work Plan.

Be well prepared to protect CRC

1. Nothing touches the floor, All must be on wheels.
2. Carts & MEWPs wheels must be replaced with a cleaner type (White).
3. Always have protective sheets/board on site to use for cover areas.
4. Damaging CRC will cause unnecessary and painful expenses to your company.

**1W South
Starts Aug 11**

**1W North
Ongoing**





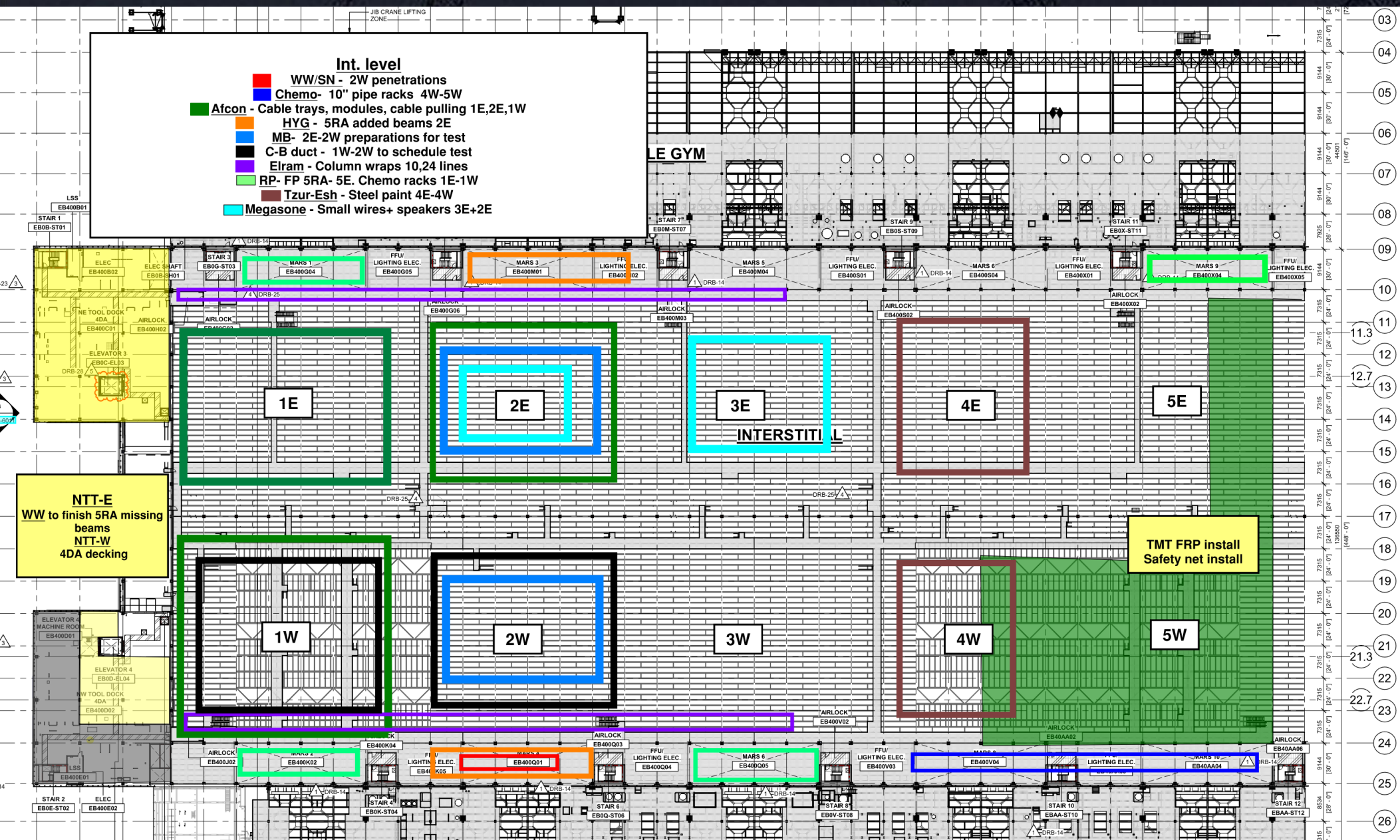
- CR level:**
- Atcon** - Cable trays, modules and stickers 1W, 2E, 2W
 - MB** - 1E drops, 1W drops, 2E drops
 - Elram** - 10, 24 columns/shaft walls
 - Meptagon** - Zero tolerance pipes 5E-5W, I&C preparations
 - D&P** - Ceiling rods 1E, 5E blades install.
 - Tzur-esh** - 24-25 lines, 4E-4W
 - HYG** - 1W Litho crane QA, 5W Litho crane steel
 - PT** - Duct prep for test AA-AH east
 - Talad** - Blades install 24-25 lines

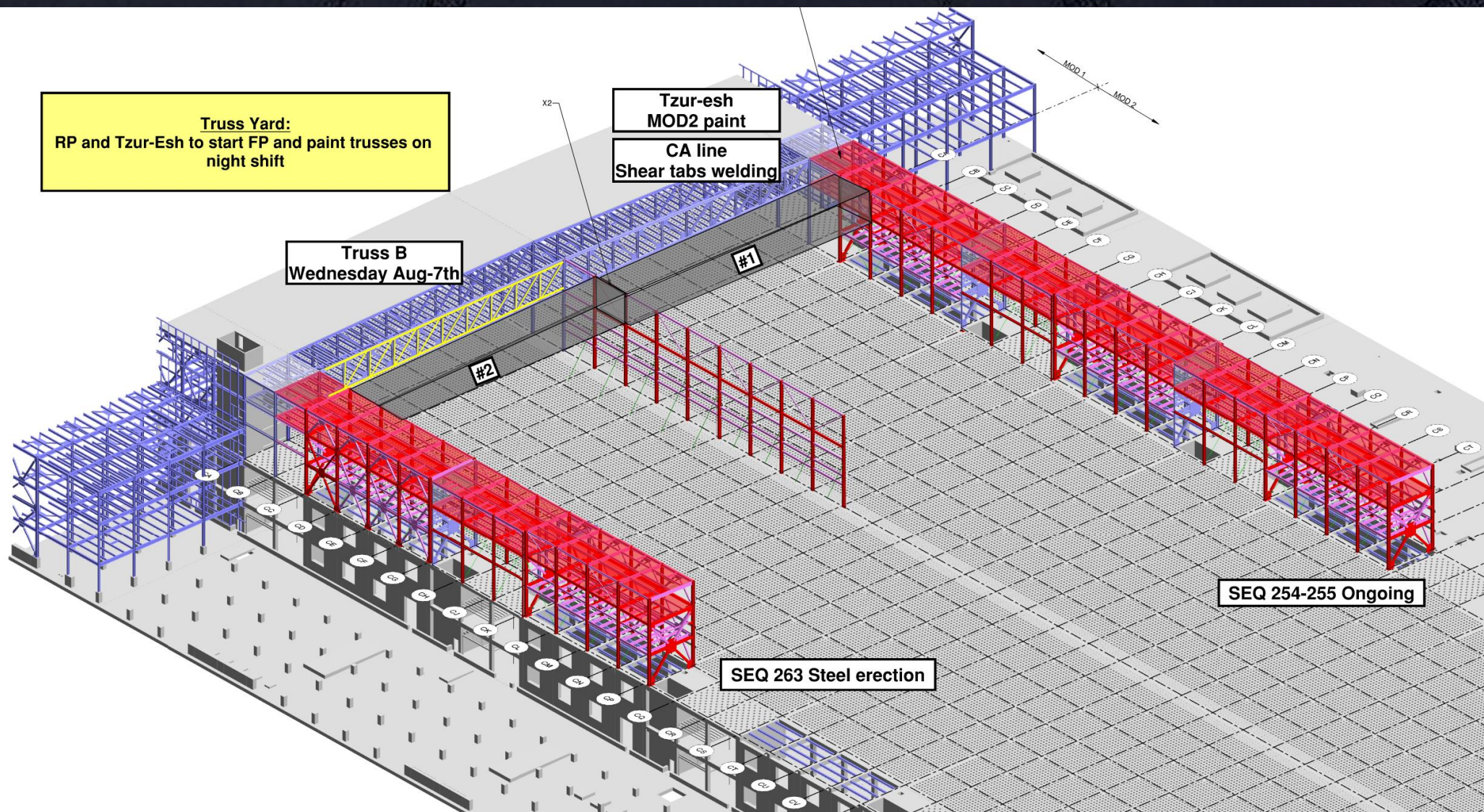
Belfor
1E 9 Line+ AA line

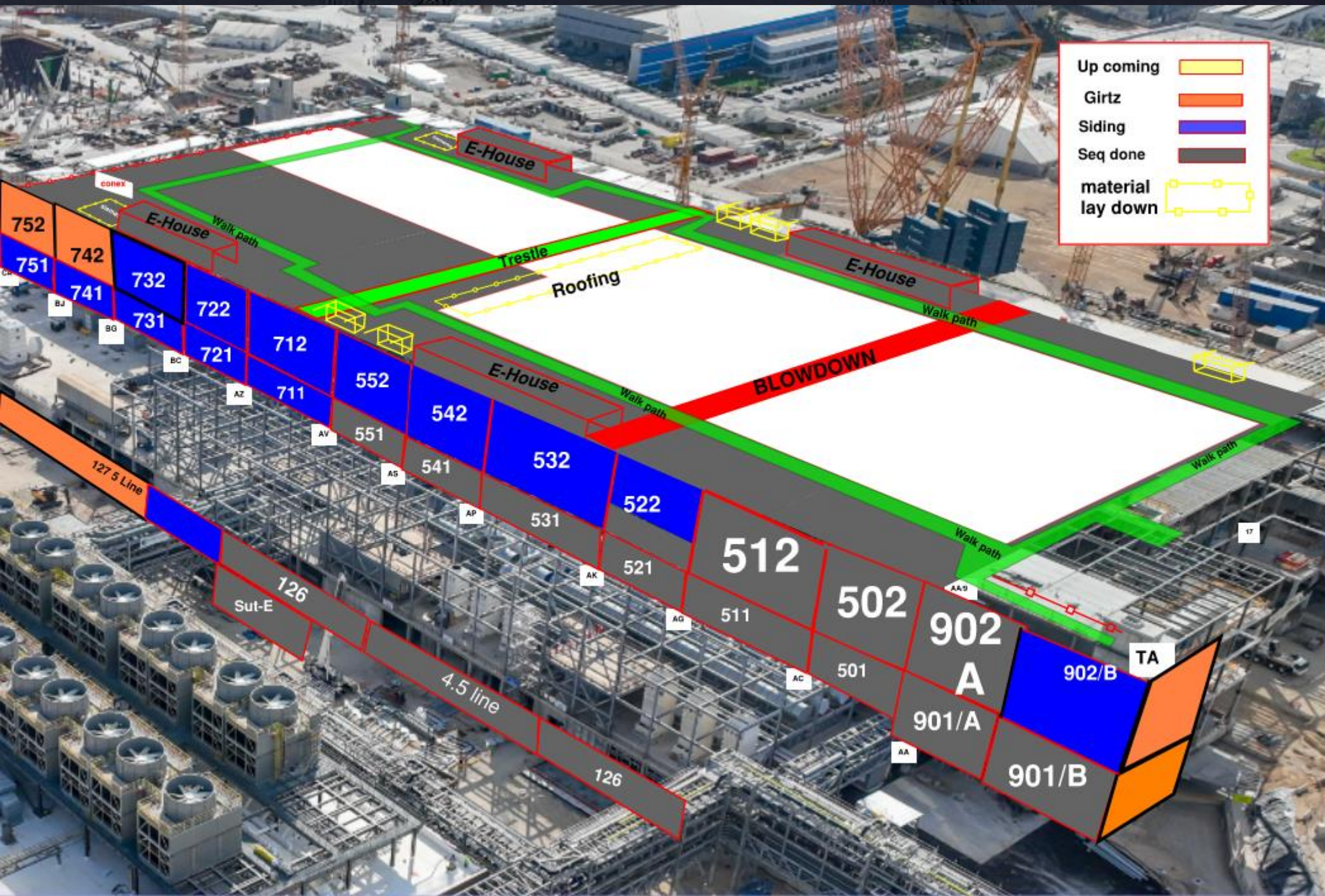
NTTE/W
WW/SN - west side welding tabs and replacing beams
Elram - East/West floor done QA/QC
SK - east side pipes needs to be completed
HYG - East to finish steel.
West receiving material

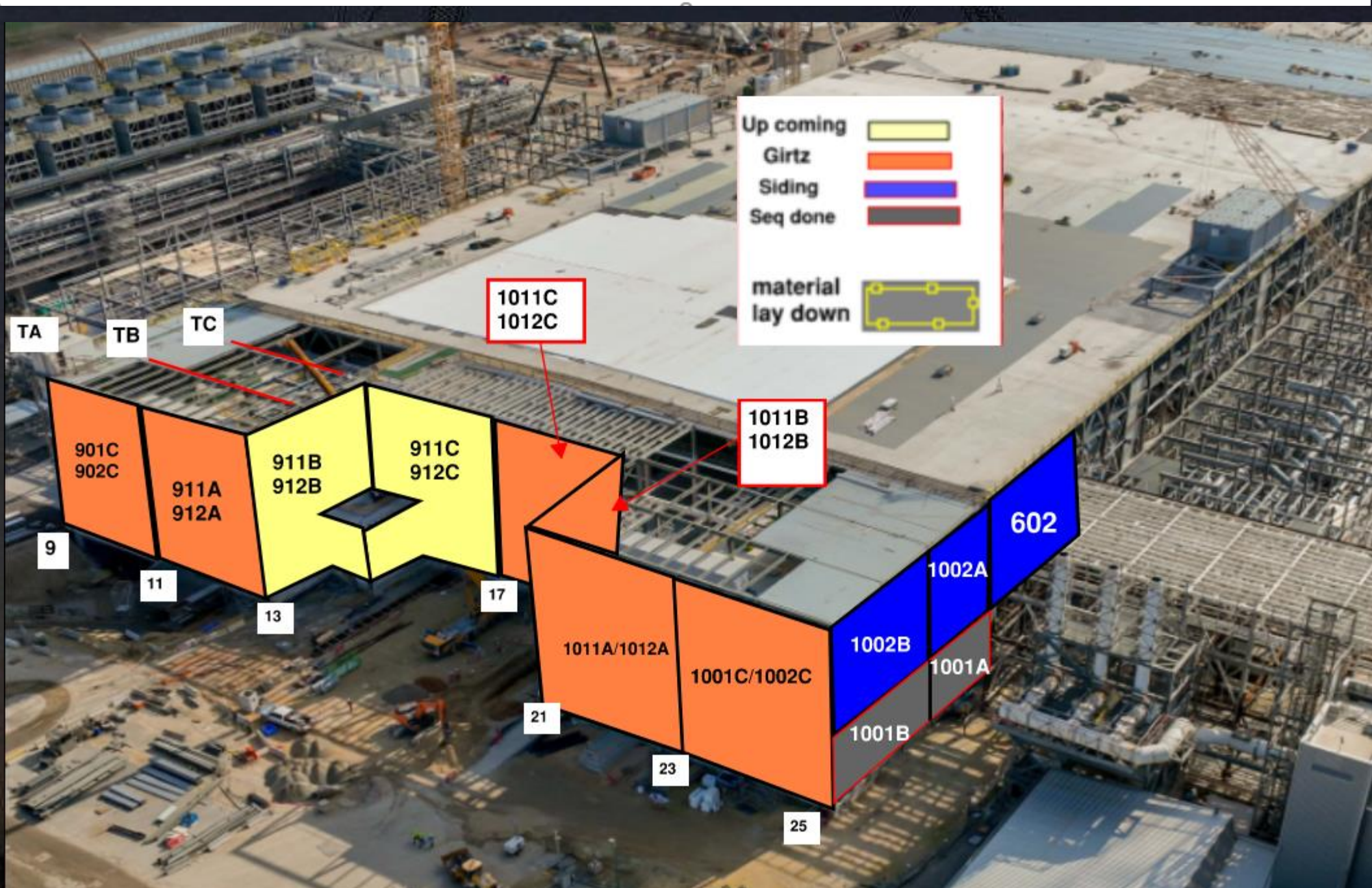
Link
RP - FP 5RA level
MB - To start WW33

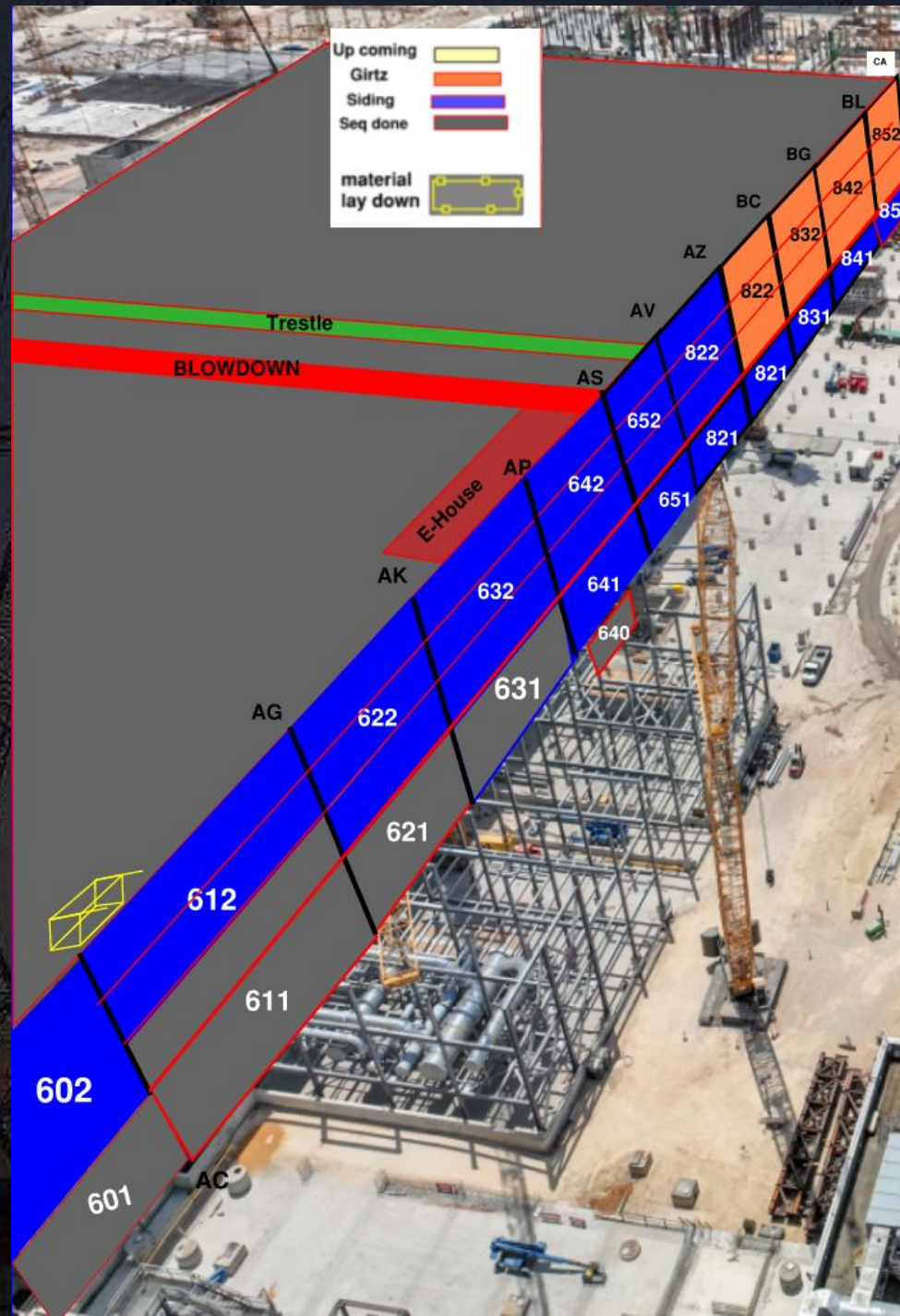








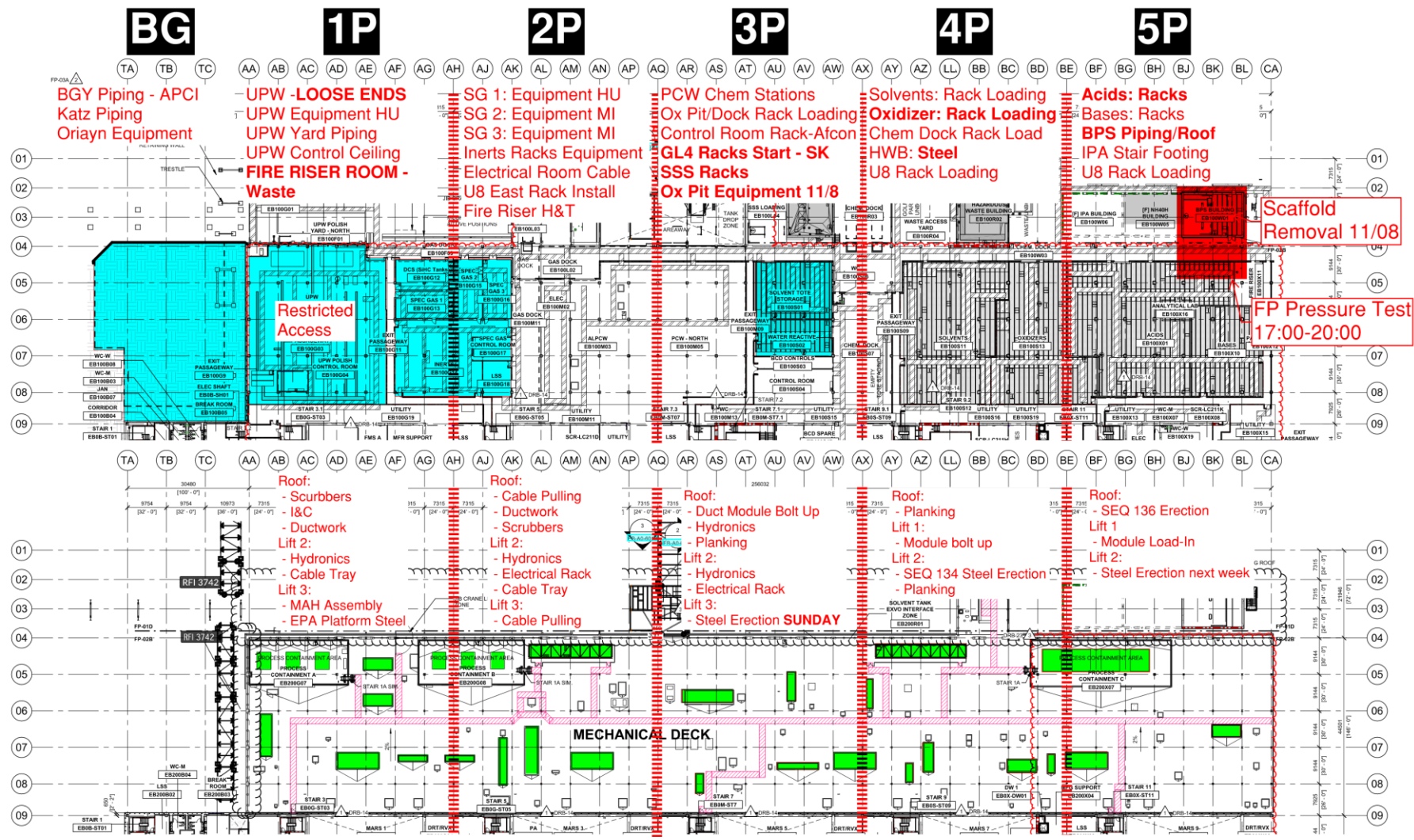




PSSS.1

Utility Level
1YA

PSSS Roof
2SA

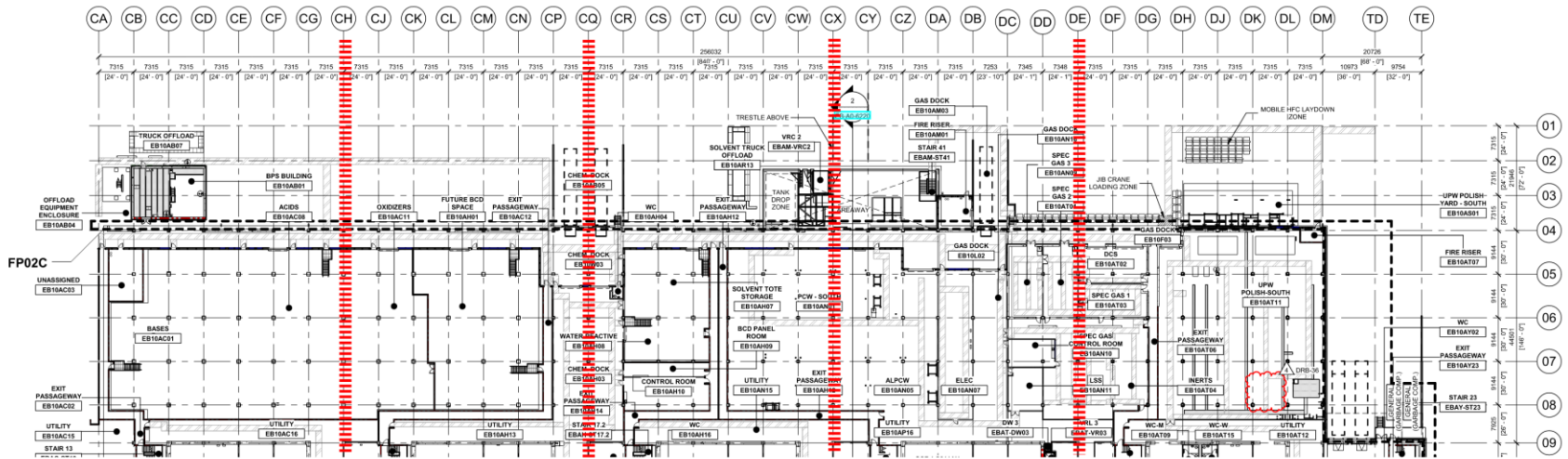


PSSS.2

10P

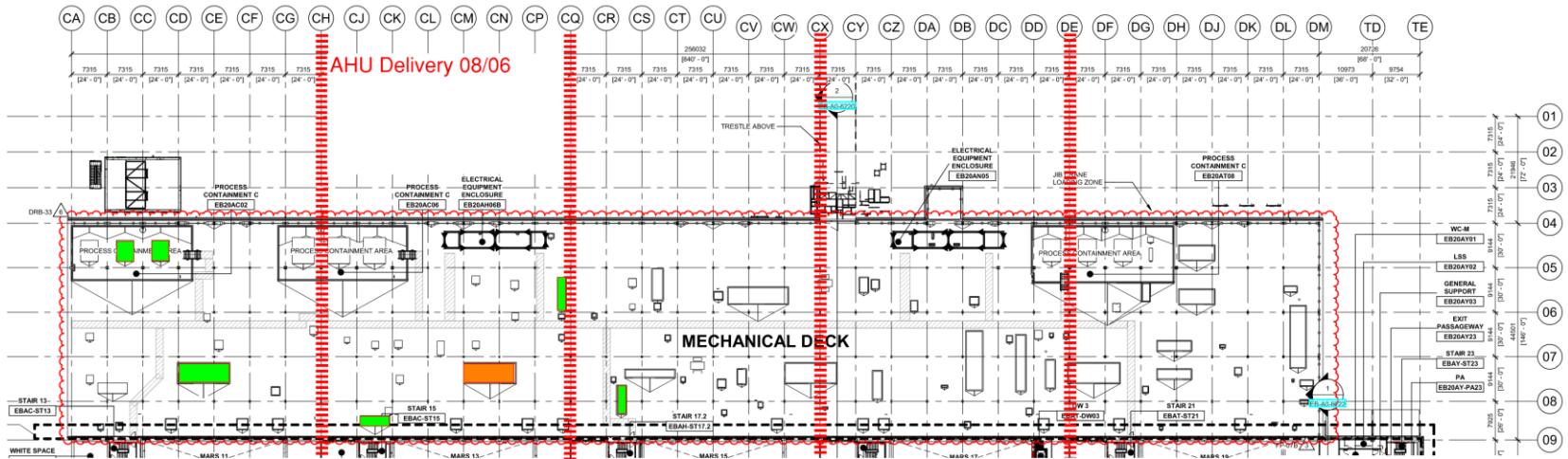
Utility Level

1YA



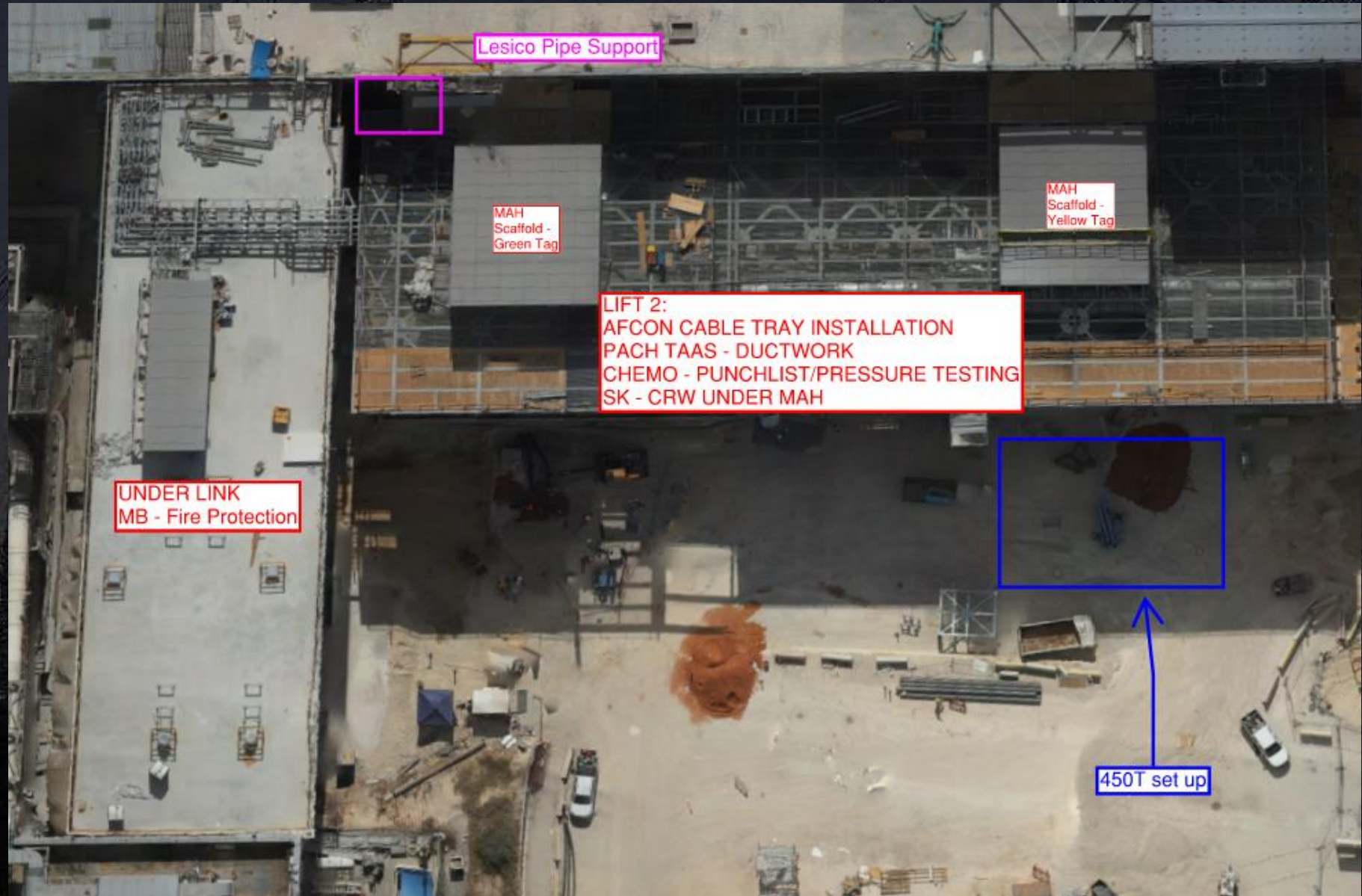
PSSS Roof 2SA

AHU Delivery 08/06



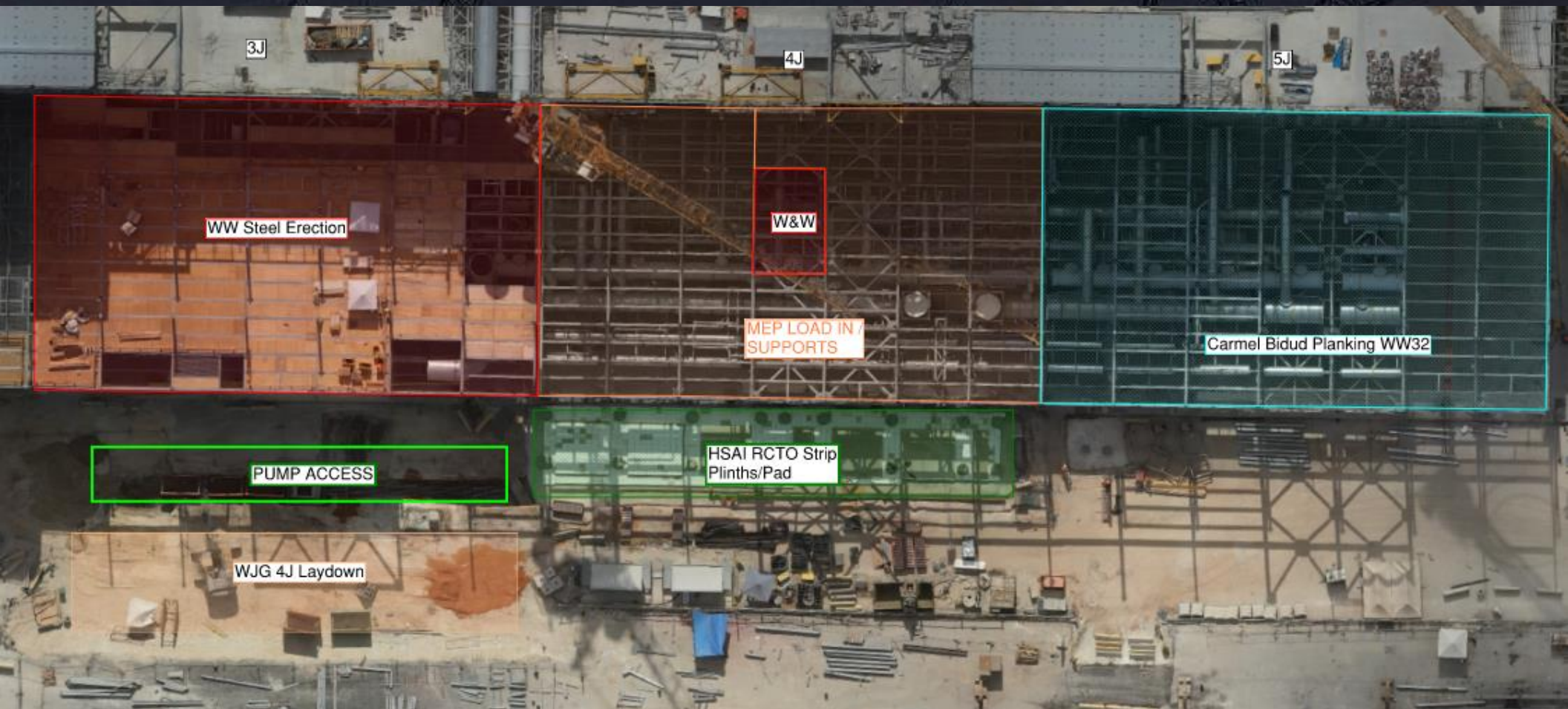


WJG 01J, 02J LIFT 2 & 3



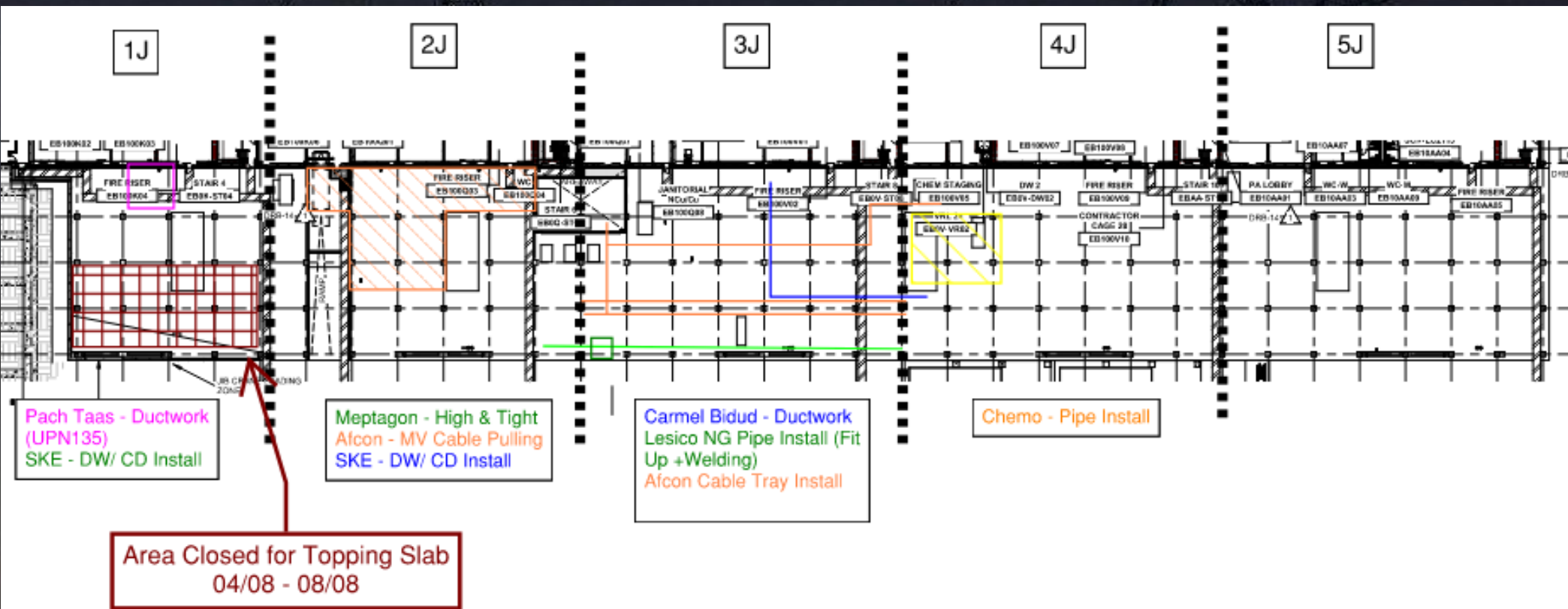


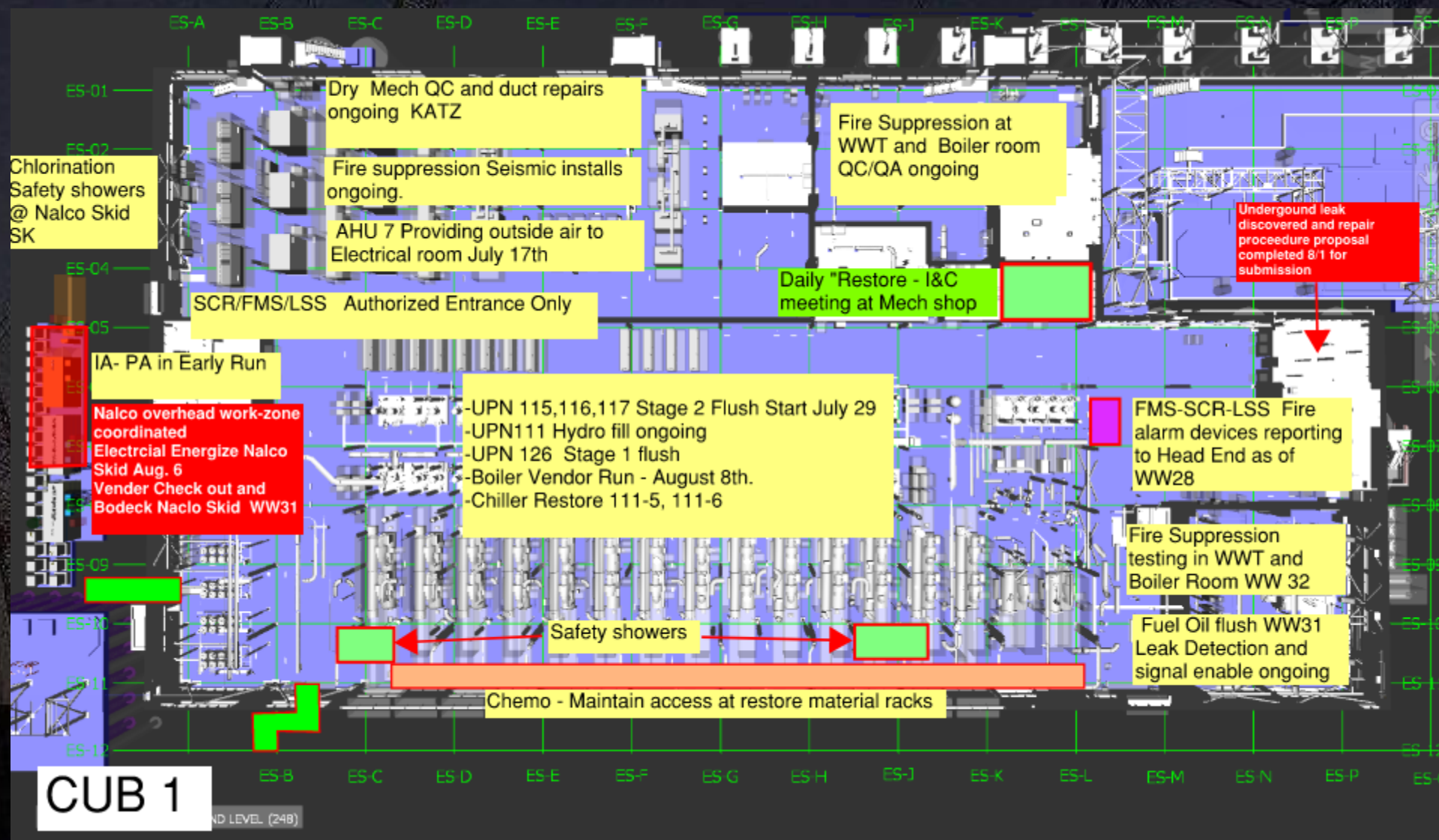
WJG 03J, 04J, 05J LIFT 2 & 3

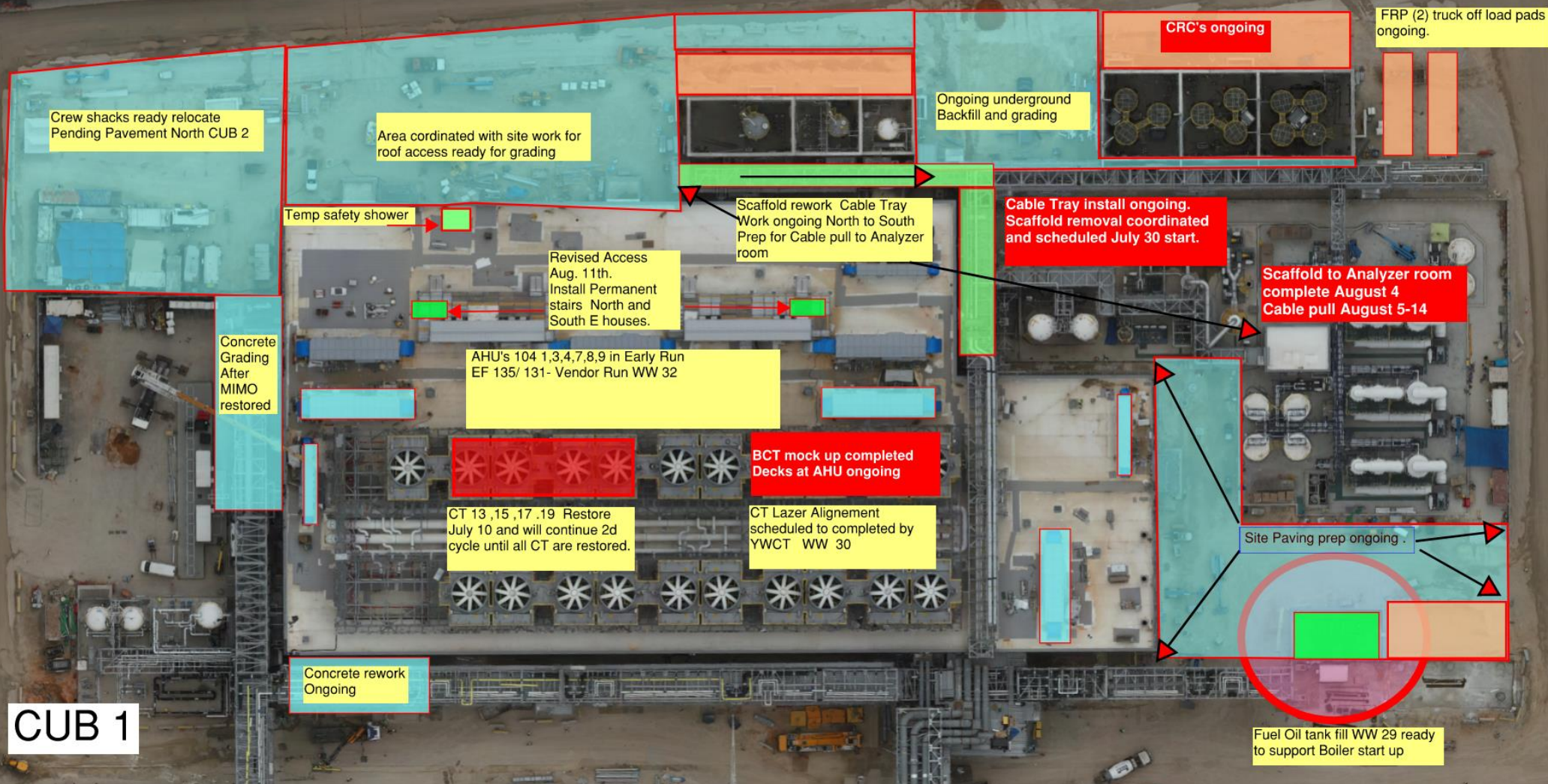


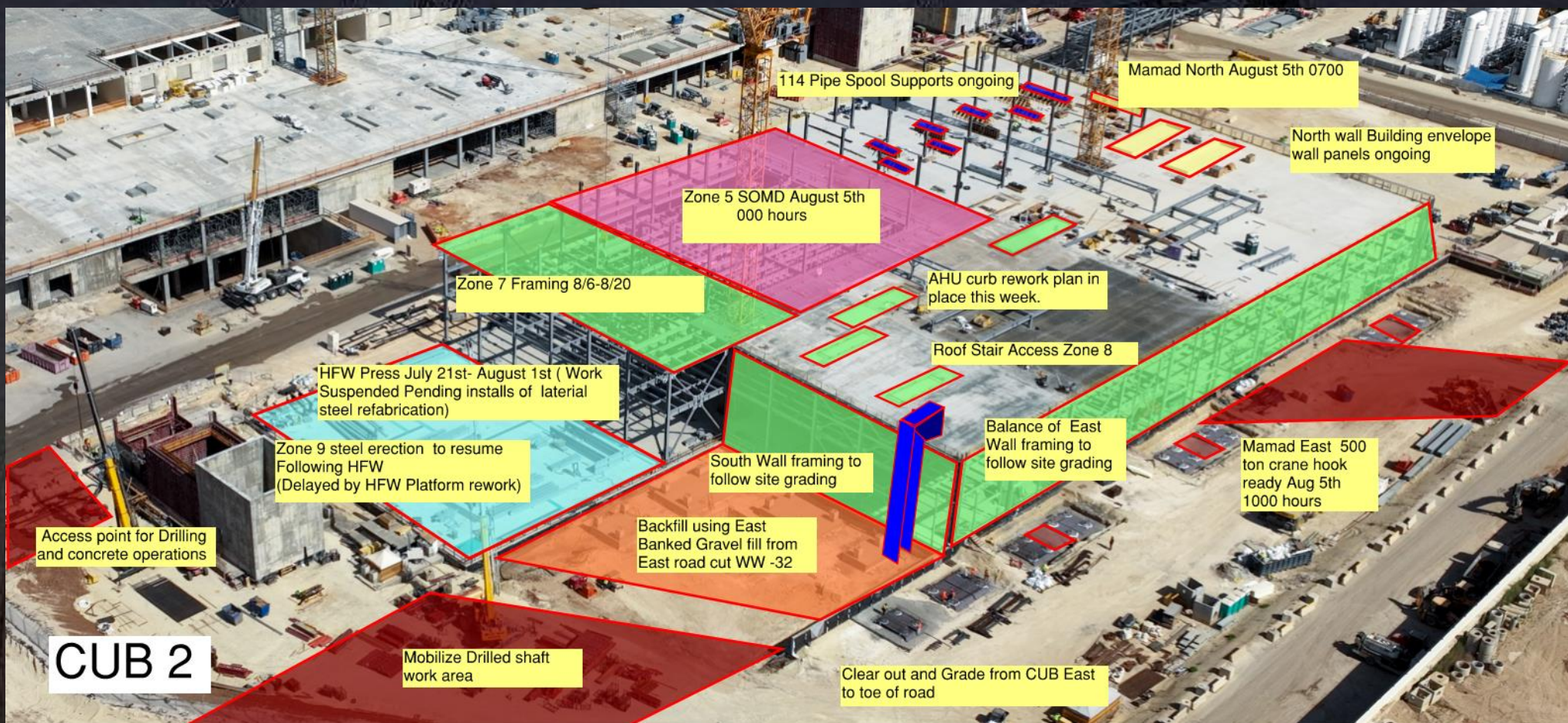


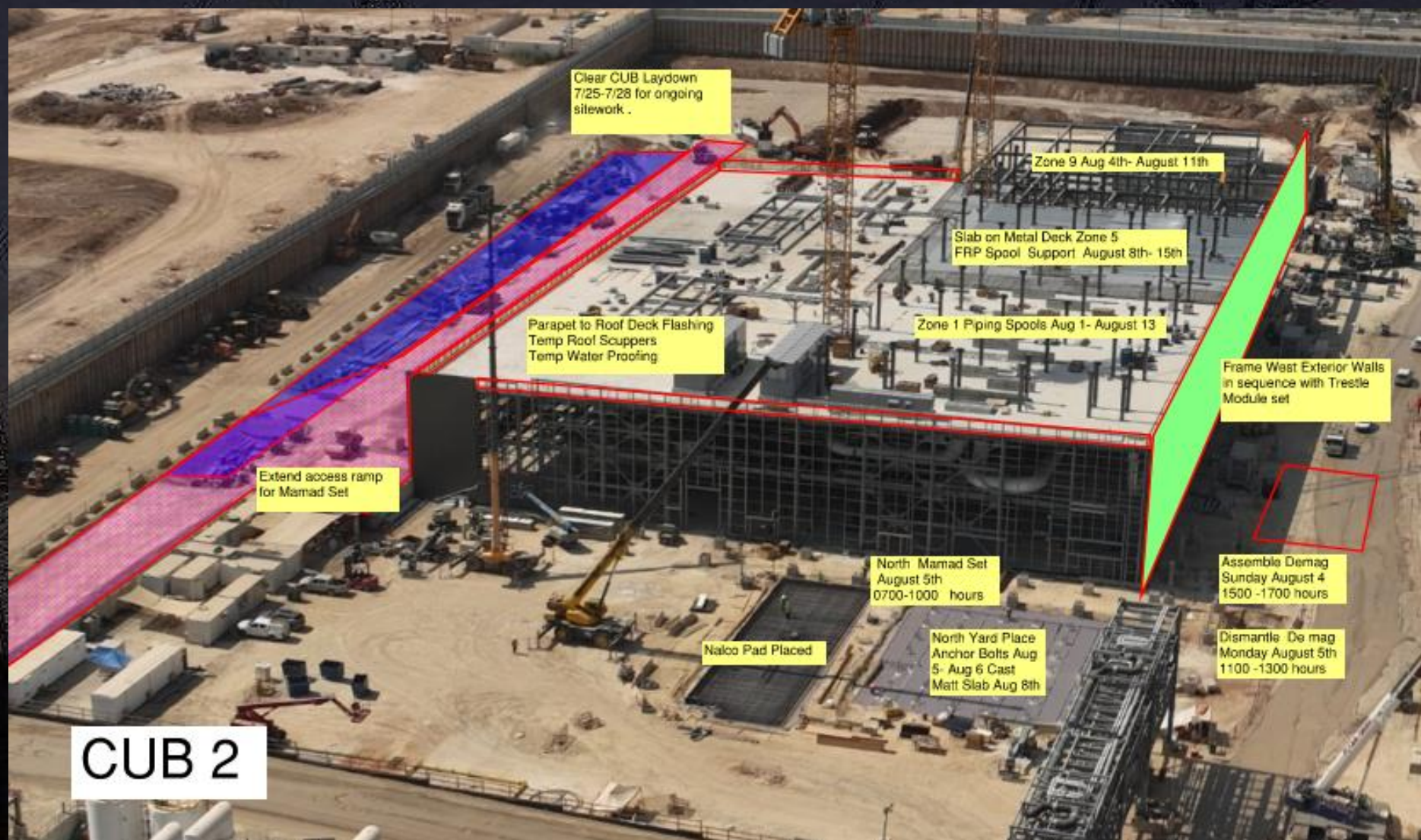
WJG UTILITY LEVEL BUILD OUT









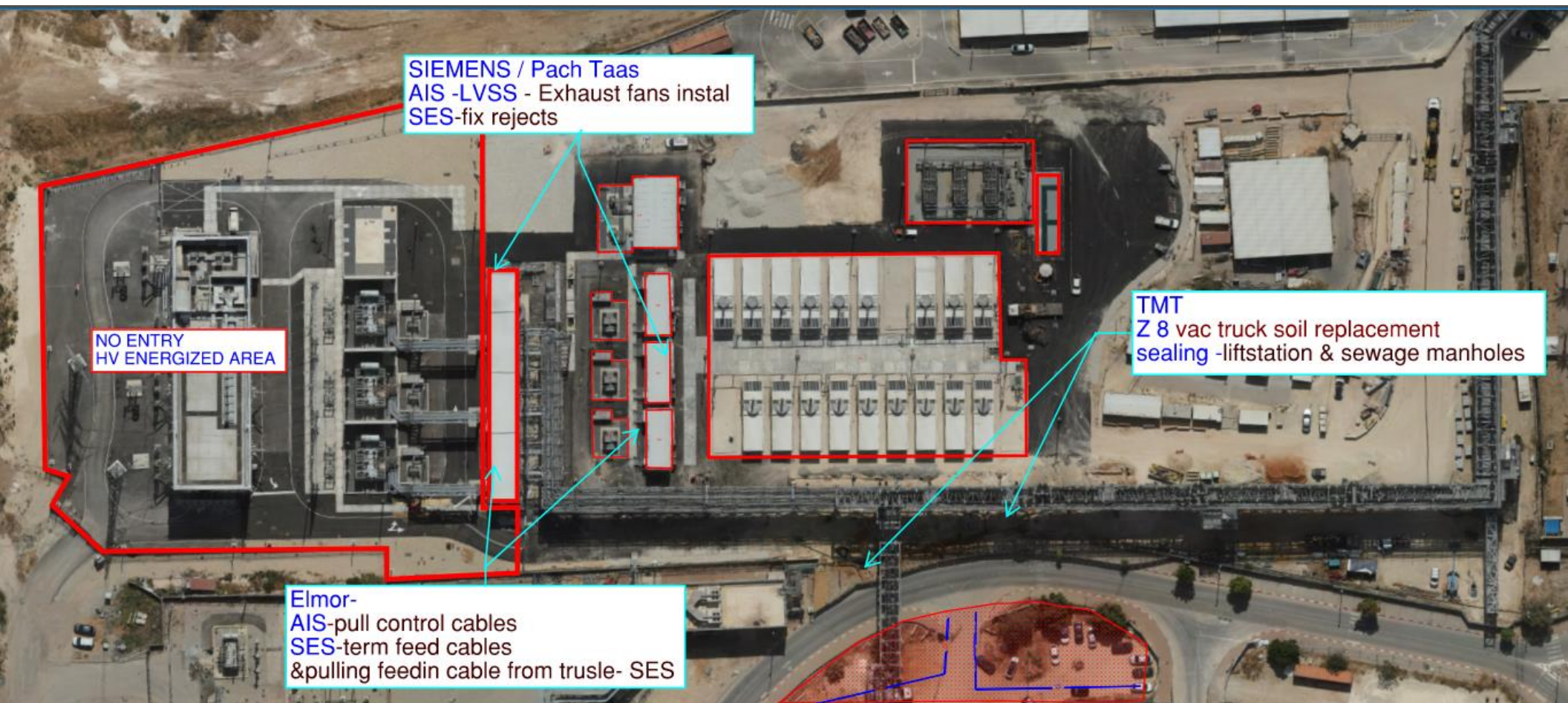




INSTRUMENT AIR PRESSURE TEST - NORTH YARD CUB1 - 17:00-22:00 - AUGUST 7TH

EXCLUSION ZONE





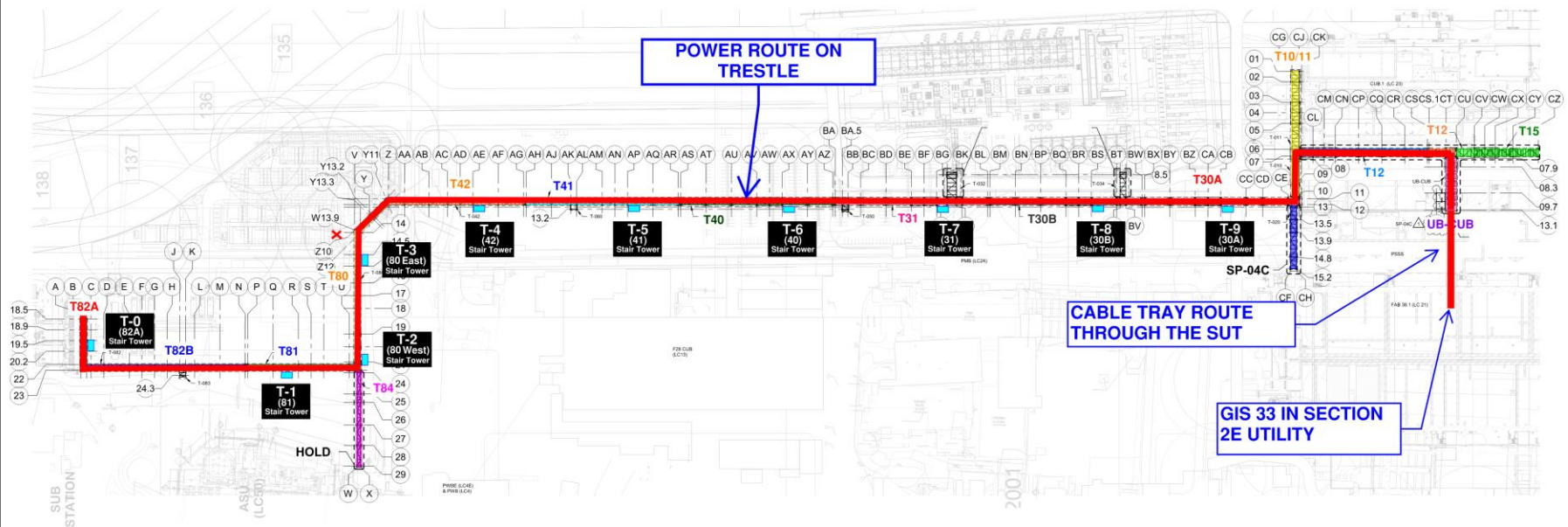
SIEMENS / Pach Taas
AIS -LVSS - Exhaust fans instal
SES-fix rejects

NO ENTRY
HV ENERGIZED AREA

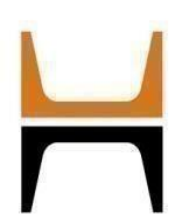
TMT
Z 8 vac truck soil replacement
sealing -liftstation & sewage manholes

Elmor-
AIS-pull control cables
SES-term feed cables
&pulling feedin cable from trusle- SES

FAB GIS PERMENENT POWER AUGUST 8TH 4PM.







HOFFMAN CONSTRUCTION COMPANY

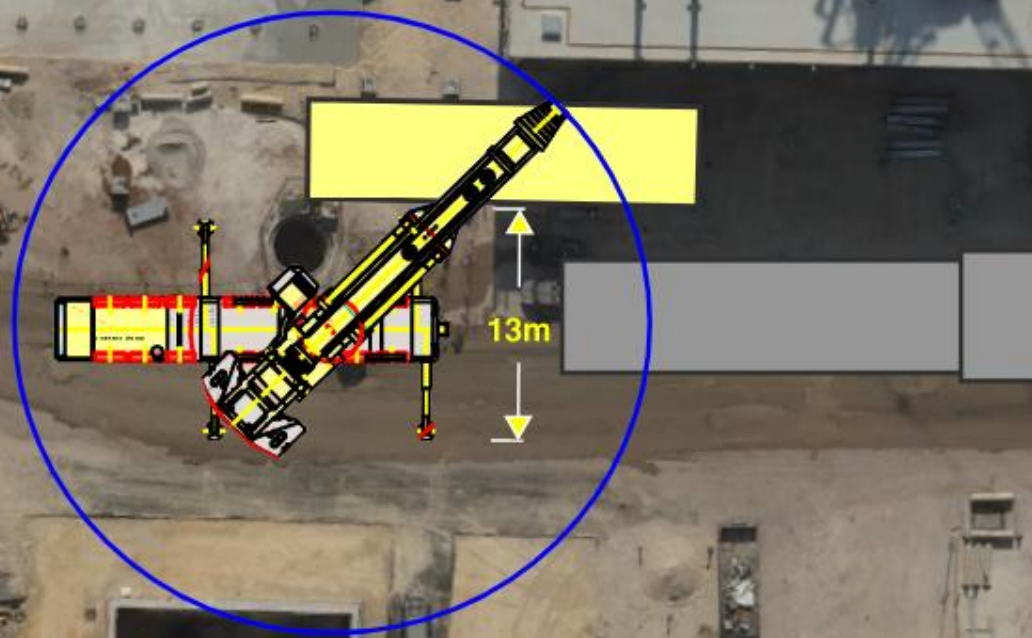


HOFFMAN
Sparrow  

T-17

Trestle - MOD 2 Steel erection

6-7 August



BSGS



From main kiosk

Site temporary power

Legend :

- 22KV Line
- 400V Line
- 109 - Kiosk

TC-10
Done

TC-8
on Gen power
07.08

TC-6
Done

TC-4
Done

630A
SW
Done

Shutdown TC-08
07.08 wednesday
from 18:00 to 22:00

630A
NW
Done

Fab 38.2

Fab 38.1

TC-9
On Gen power
20.08

630A
SE
15.08

630A
NE
30.08

TC-7
On Gen power
01.09

TC-5
Done

TC-3
Done

TC-13
Done

Cub 2

TC-12
Done

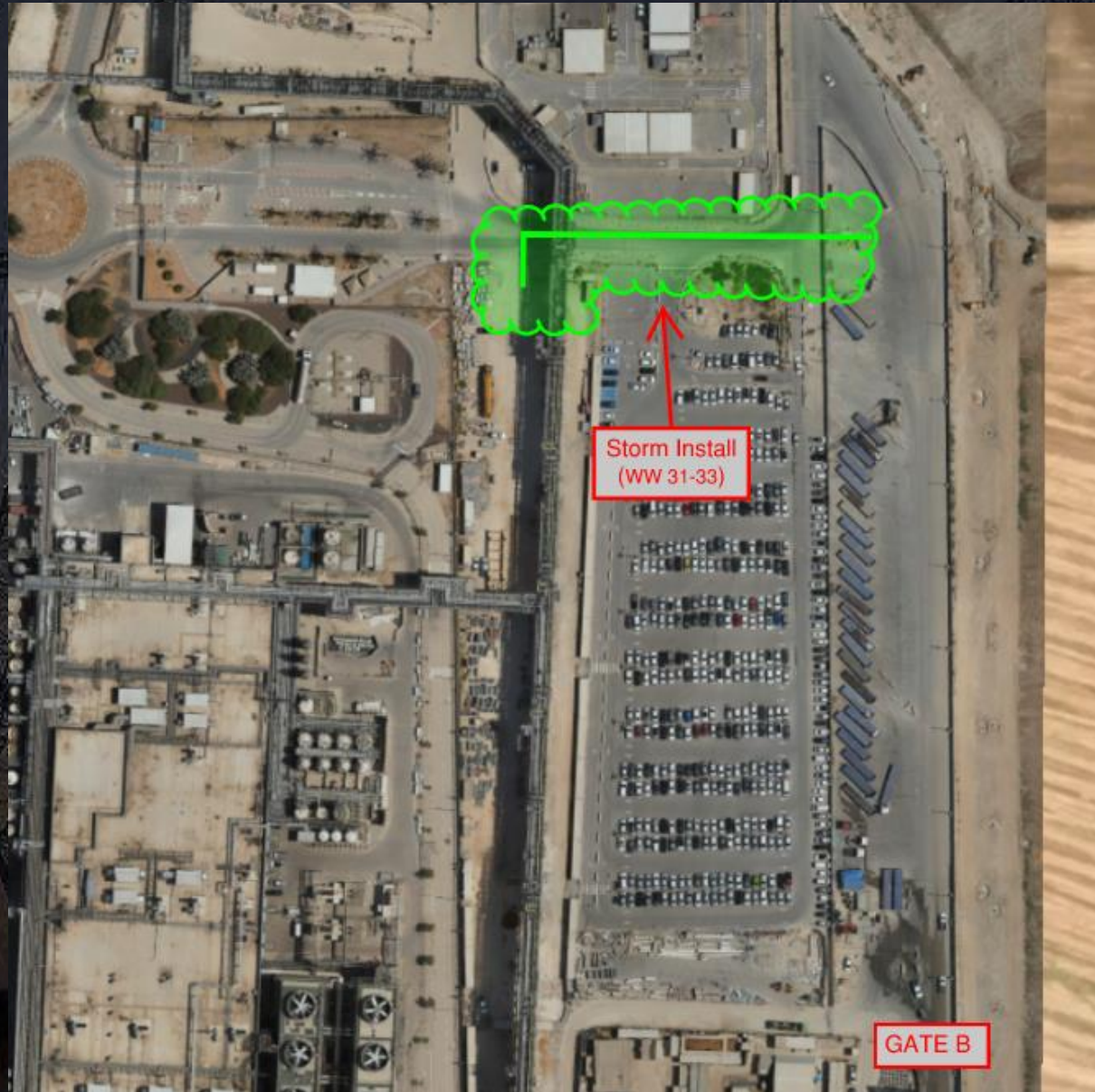
Cub 1

From main

To 115

Daily Coordination Meeting

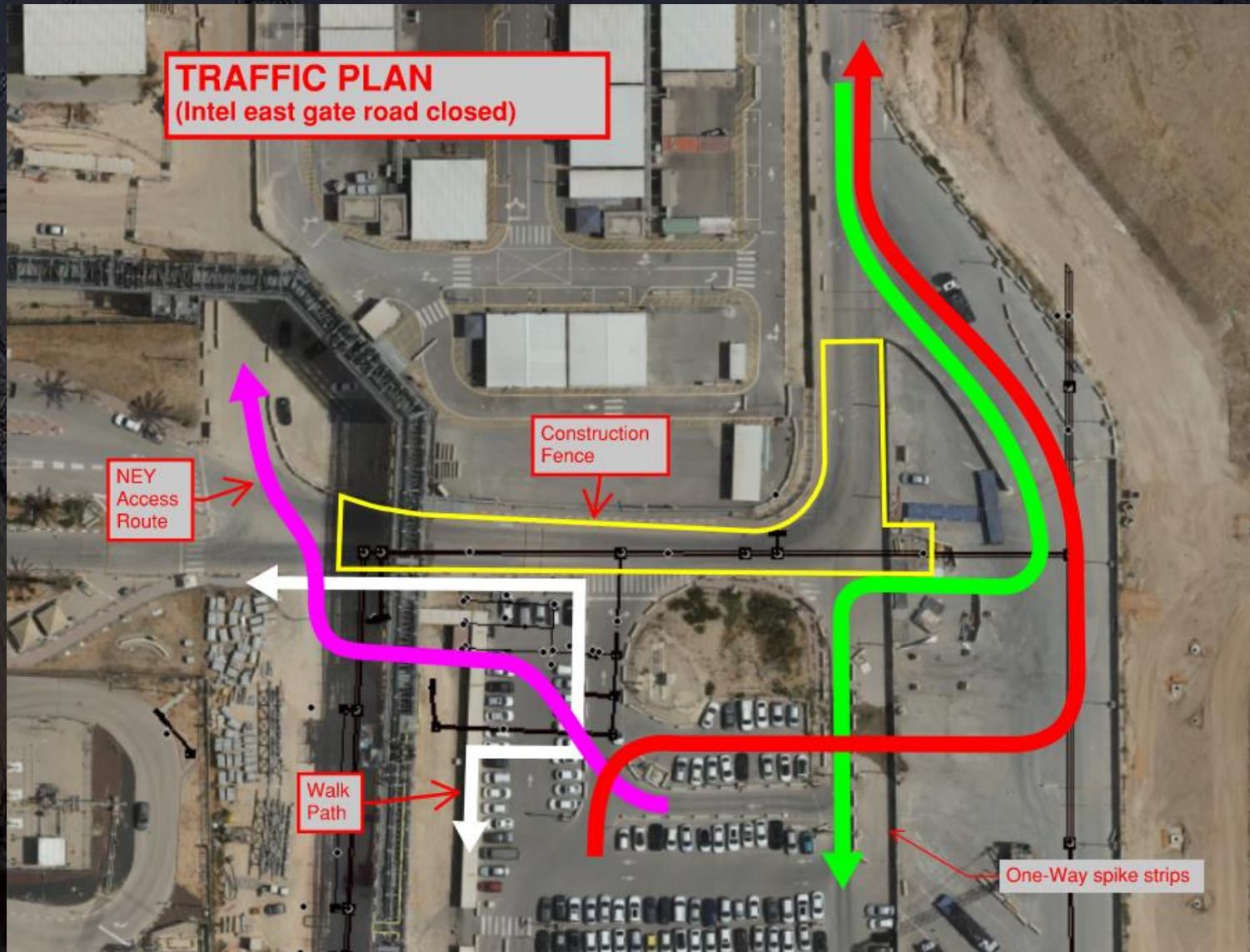
Site Logistics
North Gate B



Daily Coordination Meeting

Site Logistics

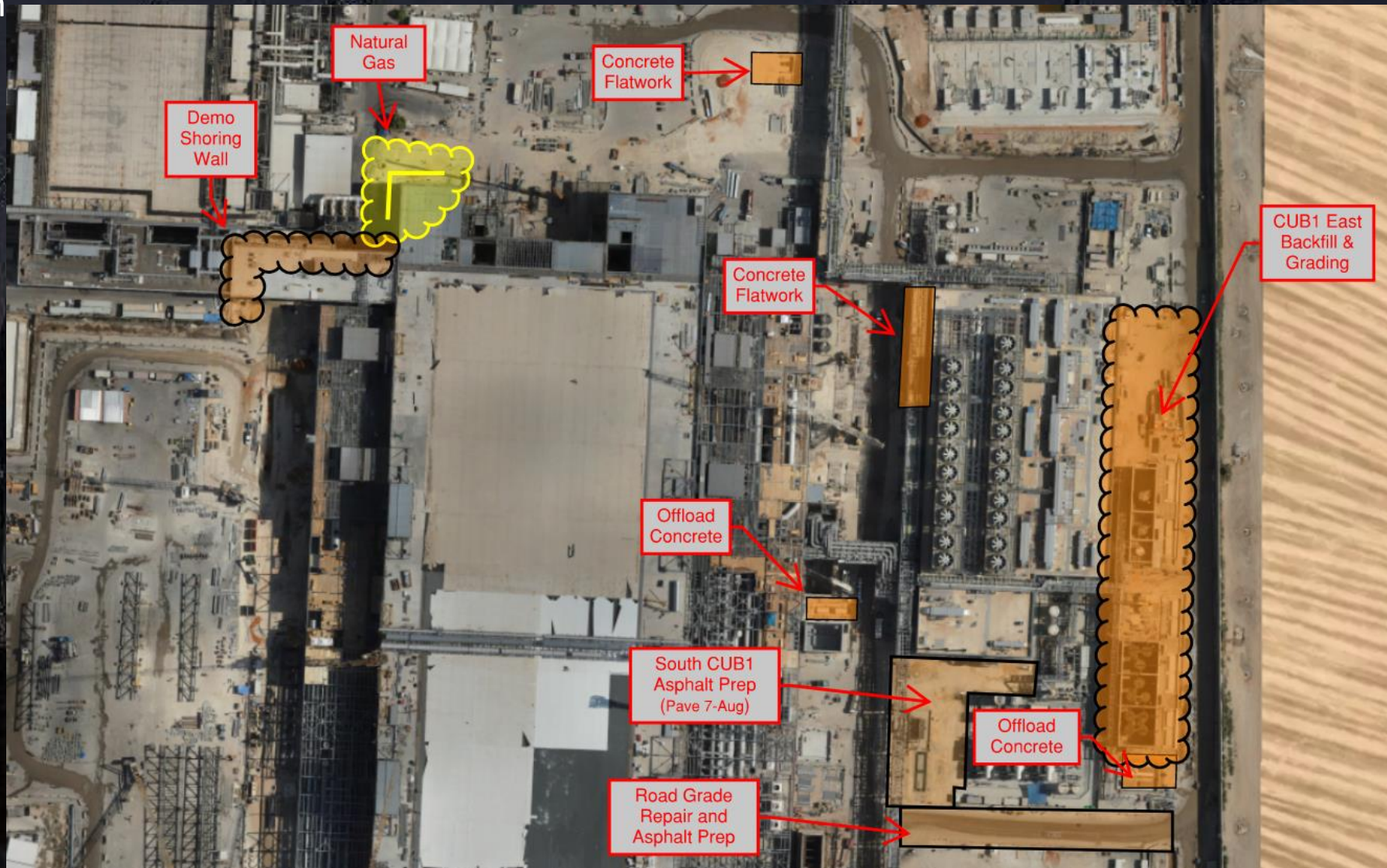
Traffic Plan



Daily Coordination Meeting

Site Logistics

North



Daily Coordination Meeting

Site Logistics

South

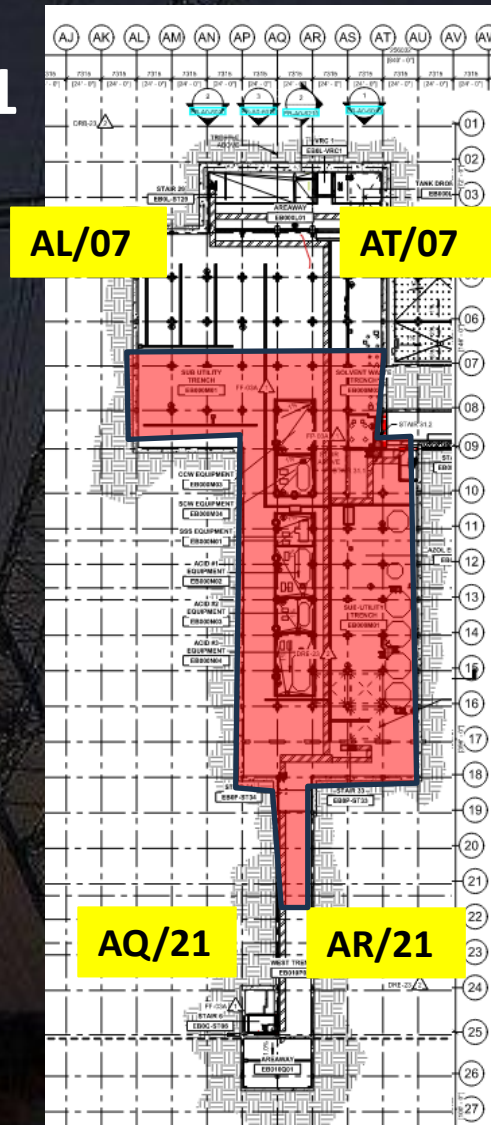




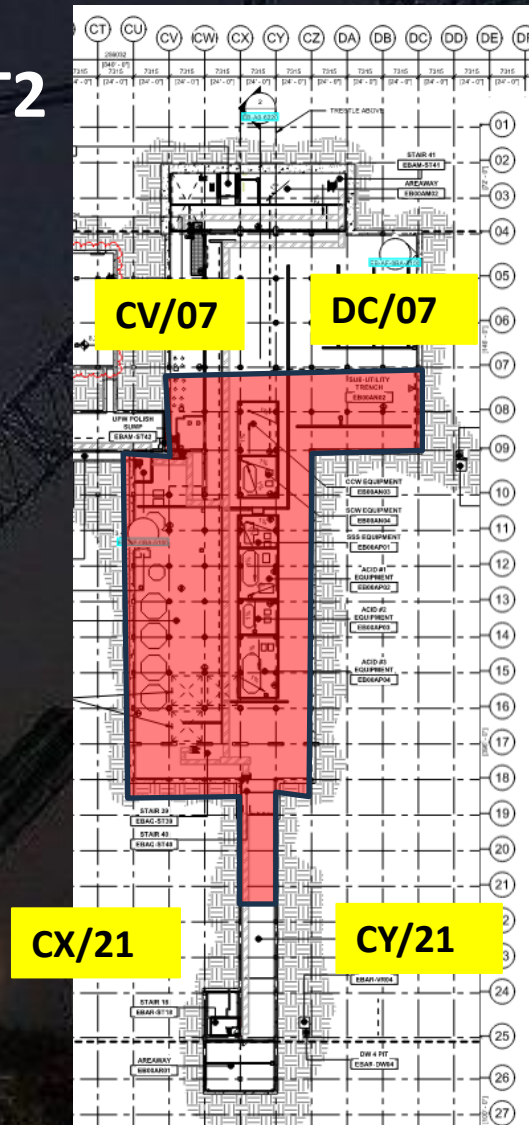
Daily Coordination Meeting

Site Logistics - Protected Areas (SUT Level)

SUT1

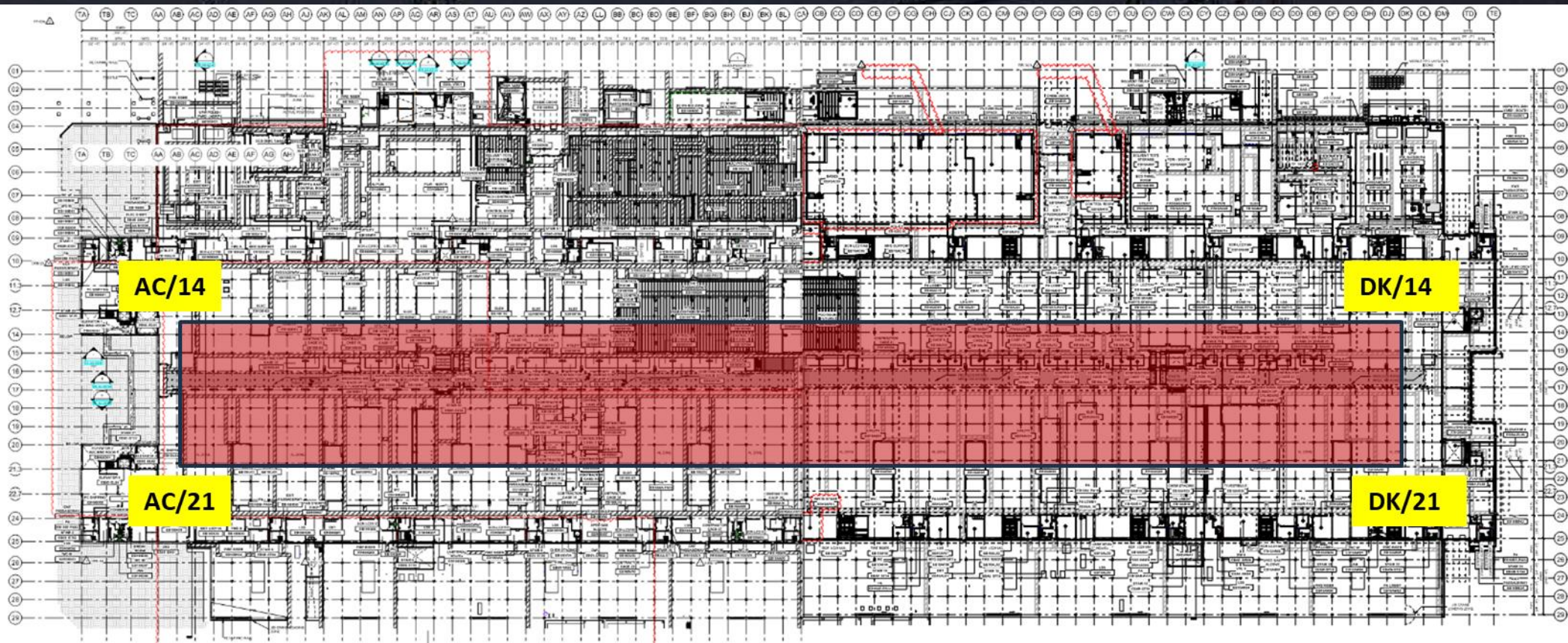


SUT2



Daily Coordination Meeting

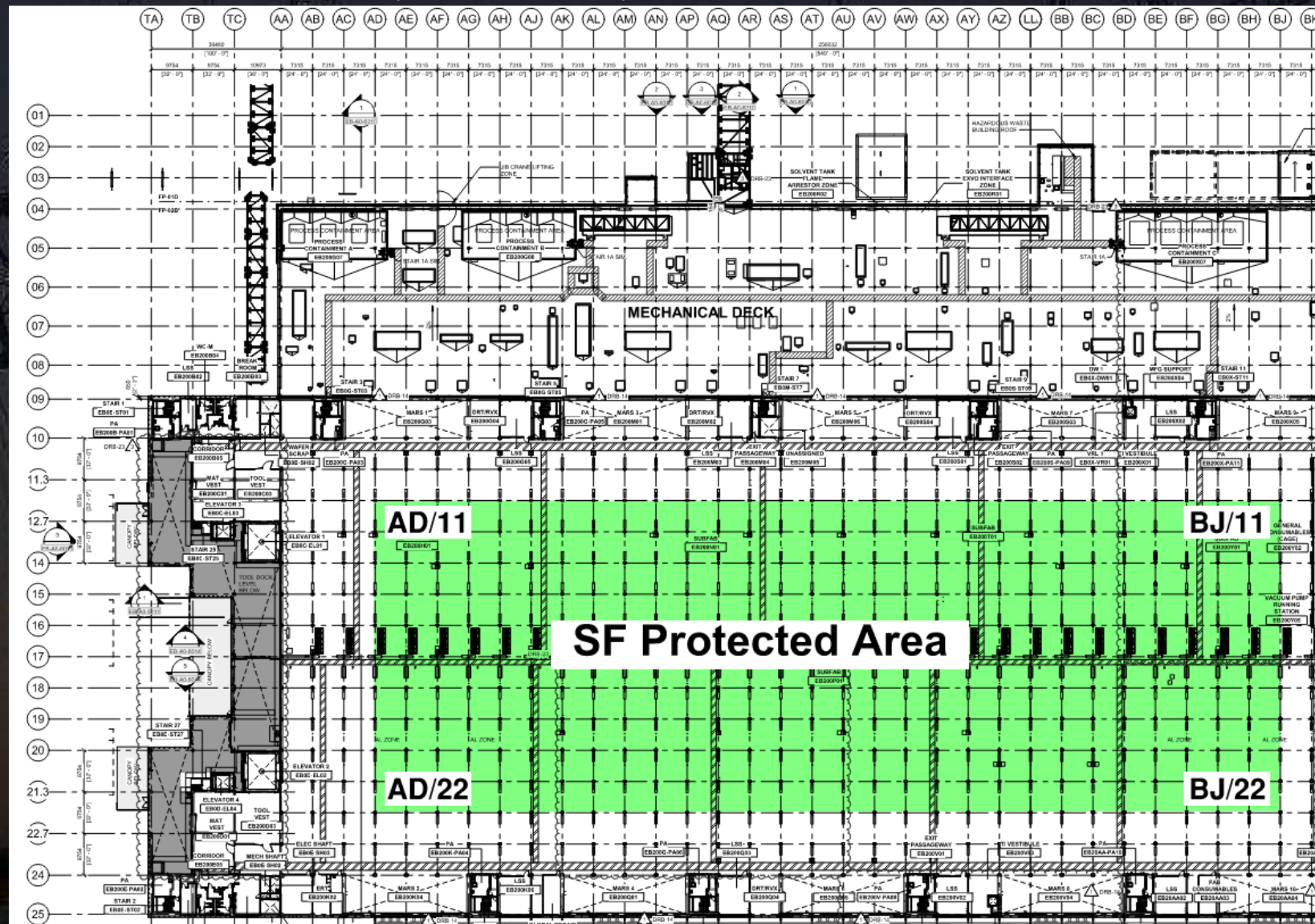
Site Logistics - Protected Areas (Utility Level)





Daily Coordination Meeting

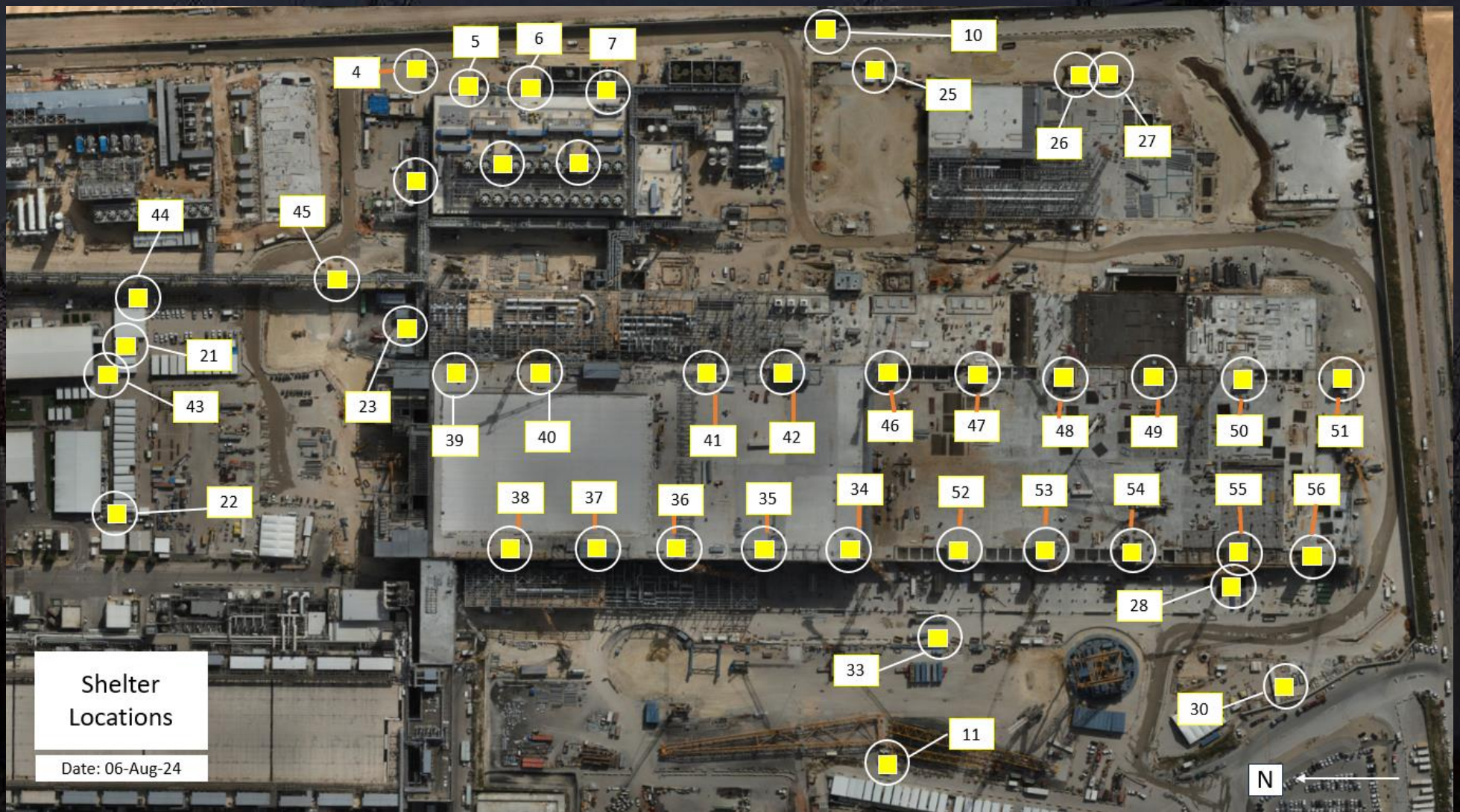
Site Logistics - Protected Areas (Subfab Level)



Daily Coordination Meeting

Site Logistics

Protected Areas



Daily Coordination Meeting

WATER BOTTLE FILLING & PERSONNEL COOLING STATIONS

BF (1) AT GIS

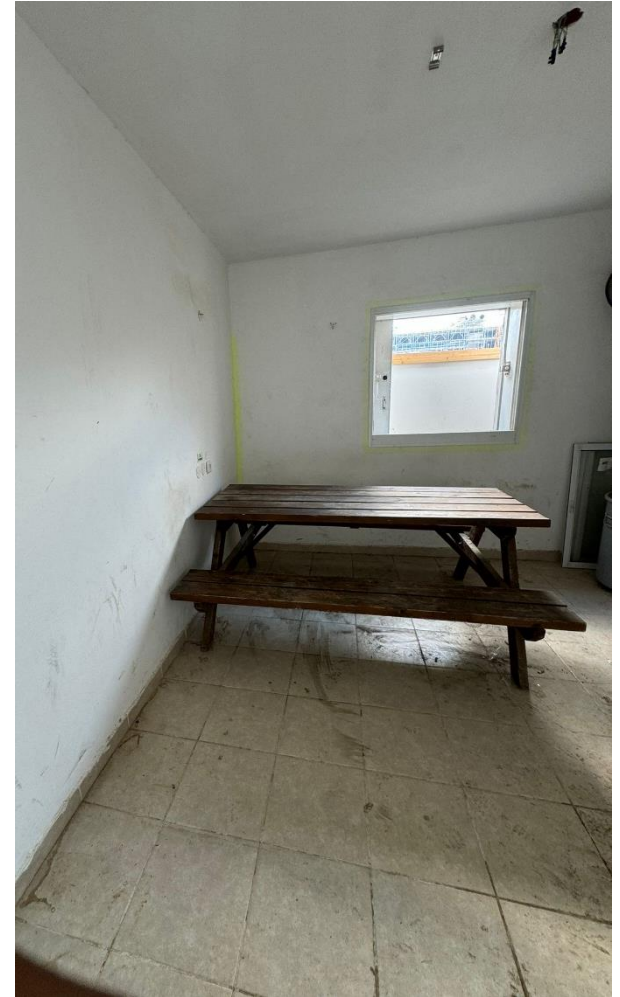
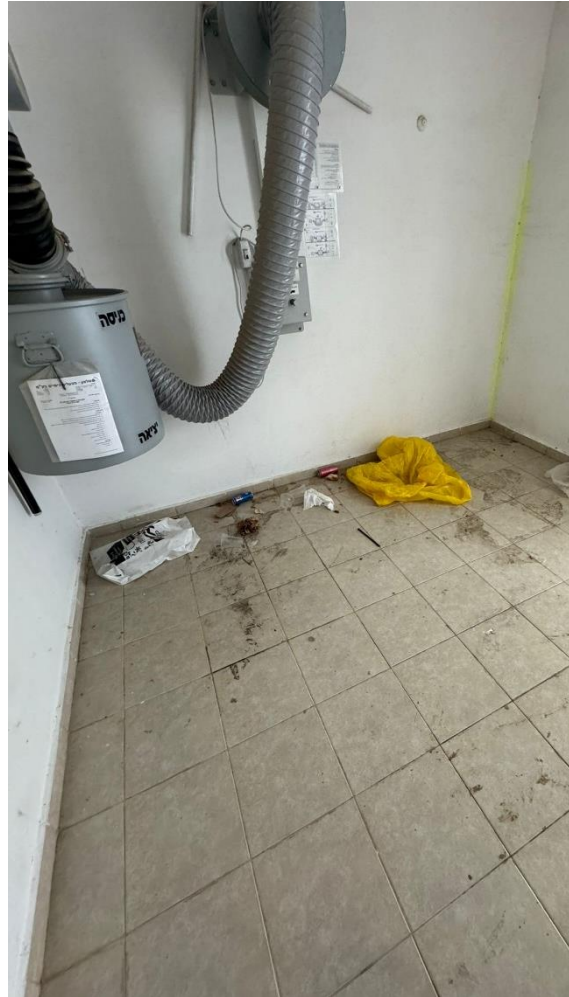


Job Services

Work Week 32

- ▶ Bottle water stations
- ▶ Mamads use





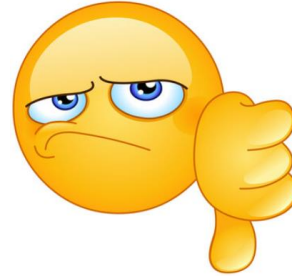
Commissioning

WW31

TCC Predicted: 247 (26 past due)

TCC Completed: **111**

Delta: **-136** (-162 total)



CCC Predicted: **33** (9 past due)

CCC Completed: **40**

Delta: **+7** (-2 total)



GT Predicted: **50** (12 past due)

GT Completed: **35**

Delta: **-15** (-27 total)



See Something, Say Something, Do Something

- All leaders on this project are responsible for communicating, escalating, and stopping unsafe acts.
- If you see a worker without their PPE on, regardless of what company they work for- say something!
- If you see a tripping hazard that you can safely move- do something!
- If you see a colleague talking on their phone while walking through the site or while in an active work zone- say something.
- Leadership cannot be passive in raising the bar across the job site.
- If you are seeing something that you don't know how to handle, escalate it to Hoffman. But please, do not be silent.



Heat Index- August 7th

	temperature (°F)																
	80	82	84	86	88	90	92	94	96	98	100	102	104	106	108	110	
Relative Humidity (%)	40	80	81	83	85	88	91	94	97	101	105	109	114	119	124	130	136
	45	80	82	84	87	89	93	96	100	104	109	114	119	124	130	137	
	50	81	83	85	88	91	95	99	103	108	113	118	124	131	137		
	55	81	84	86	89	93	97	101	106	112	117	124	130	137			
	60	82	84	88	91	95	100	105	110	116	123	129	137				
	65	82	85	89	93	98	103	108	114	121	128	136					
	70	83	86	90	95	100	105	112	119	126	134						
	75	84	88	92	97	103	109	116	124	132							
	80	84	89	94	100	106	113	121	129								
	85	85	90	96	102	110	117	126	135								
90	86	91	98	105	113	122	131										
95	86	93	100	108	117	127											
100	87	95	103	112	121	132											

Caution

Extreme Caution

Danger

Extreme Danger

Extreme Caution

- Ensuring water and shaded areas available
- Acclimating workers
- Emergency planning and response
- Training workers and supervisors on the signs of heat stress and preventative measures
- Modified work schedules and/or rotating out workers
- Monitoring of workers for signs of heat stress

Daily Coordination Meeting



14:00 Sign In