

Daily Coordination Meeting



Daily Coordination Meeting

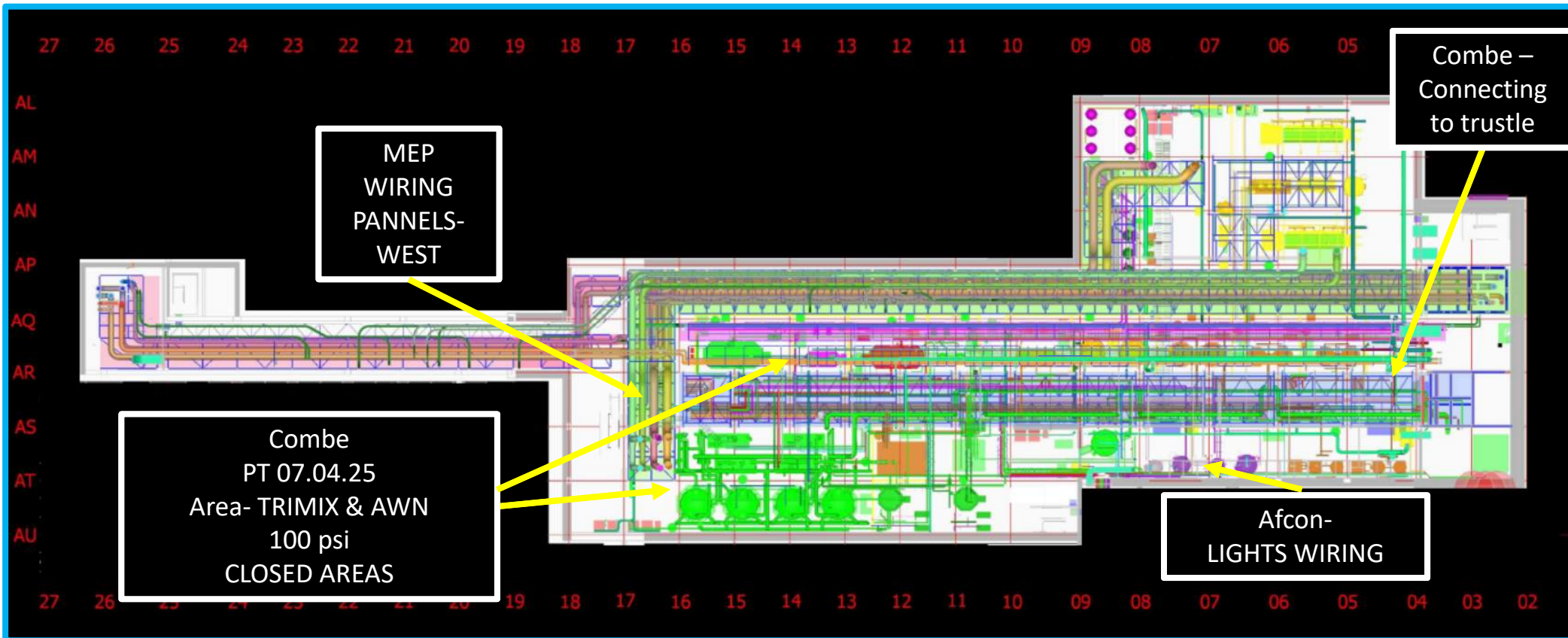
General Topics:

- Status update on companies allowed to work.
- Requirements for MEWP release – complete & repair deficiencies found in audits, manufacturer sign-off, HCC sign-off, Intel sign-off, final approval.

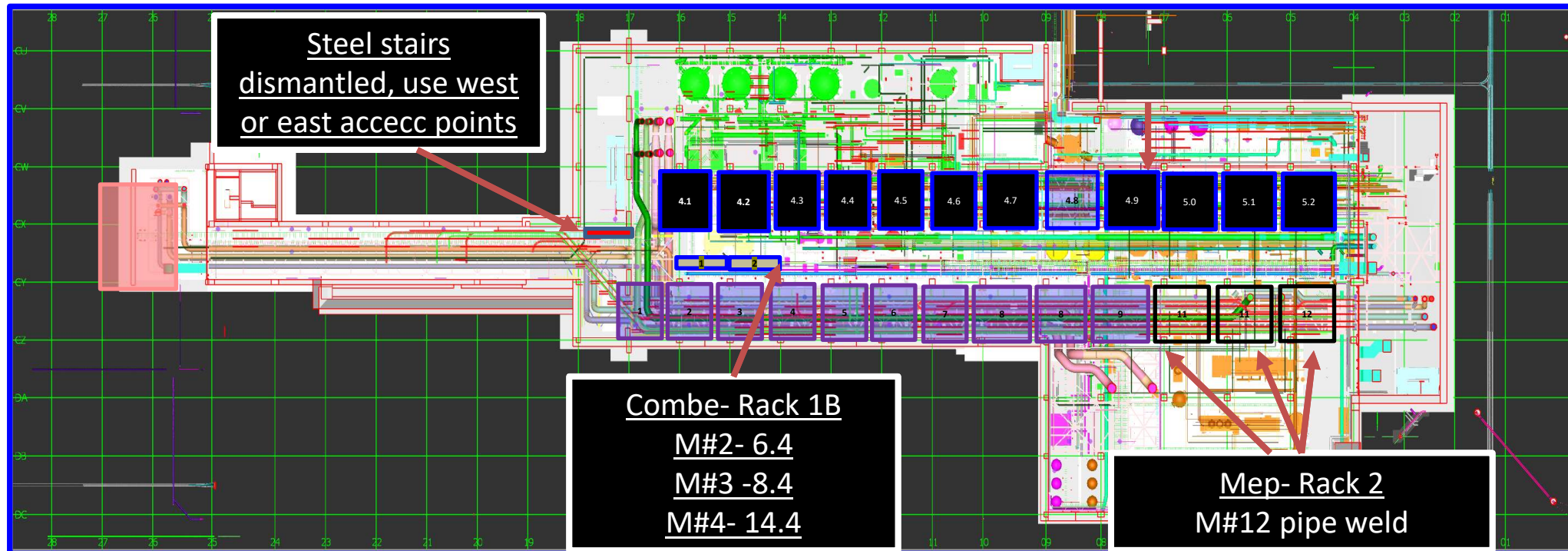
[illegible]



SUT 38.1 LEVEL



SUT 38.2 LEVEL



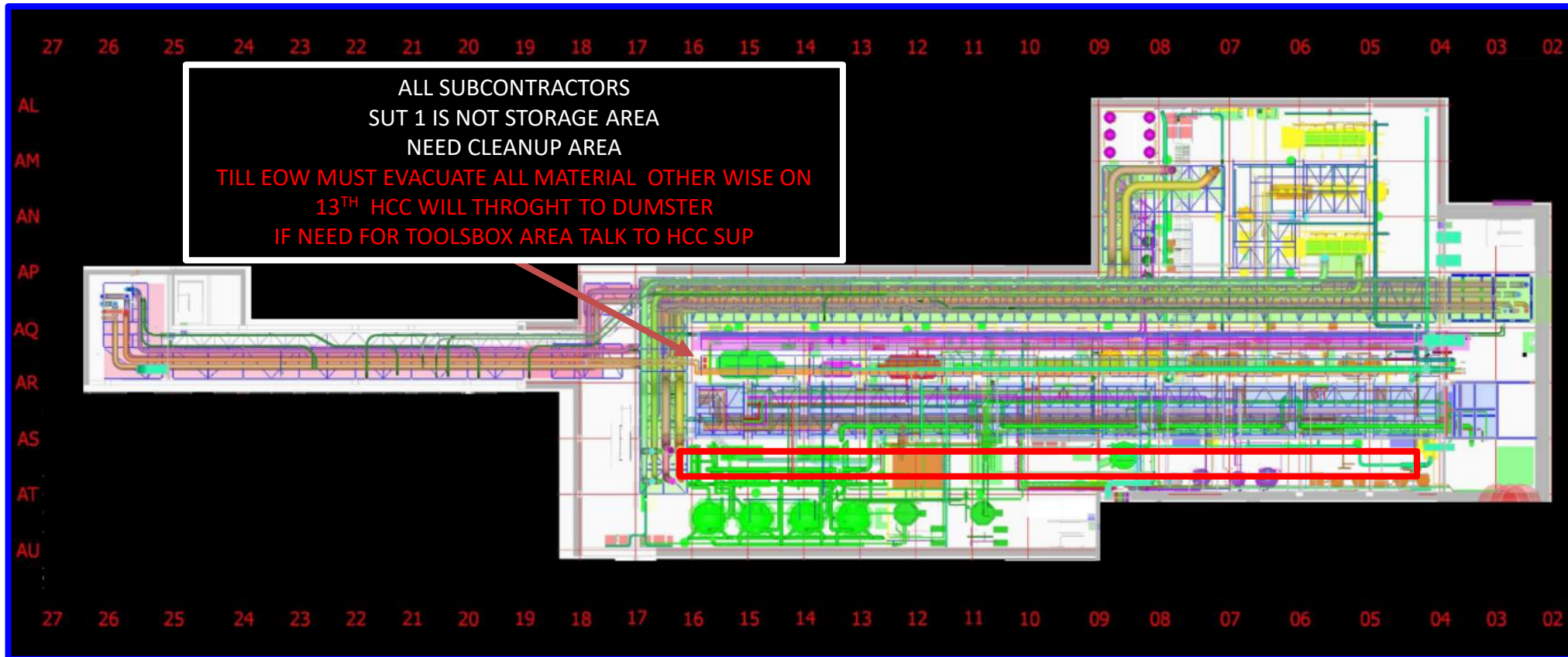
Slide 5

IK1

Ibrahim Krinawi, 3/5/2025

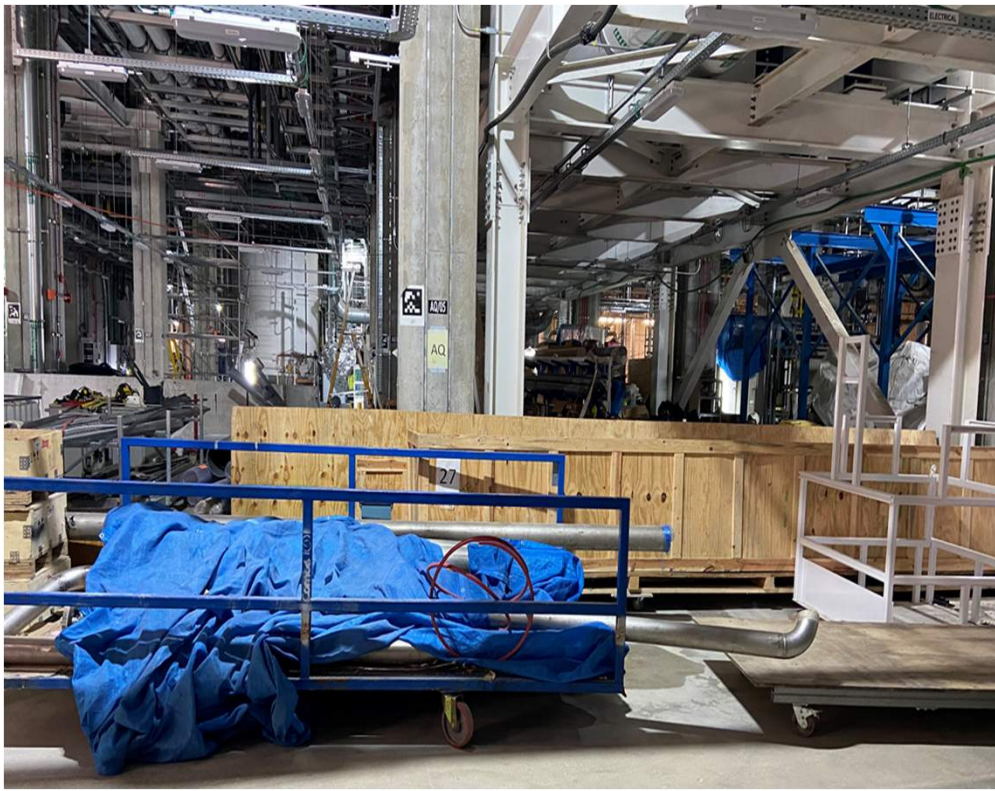


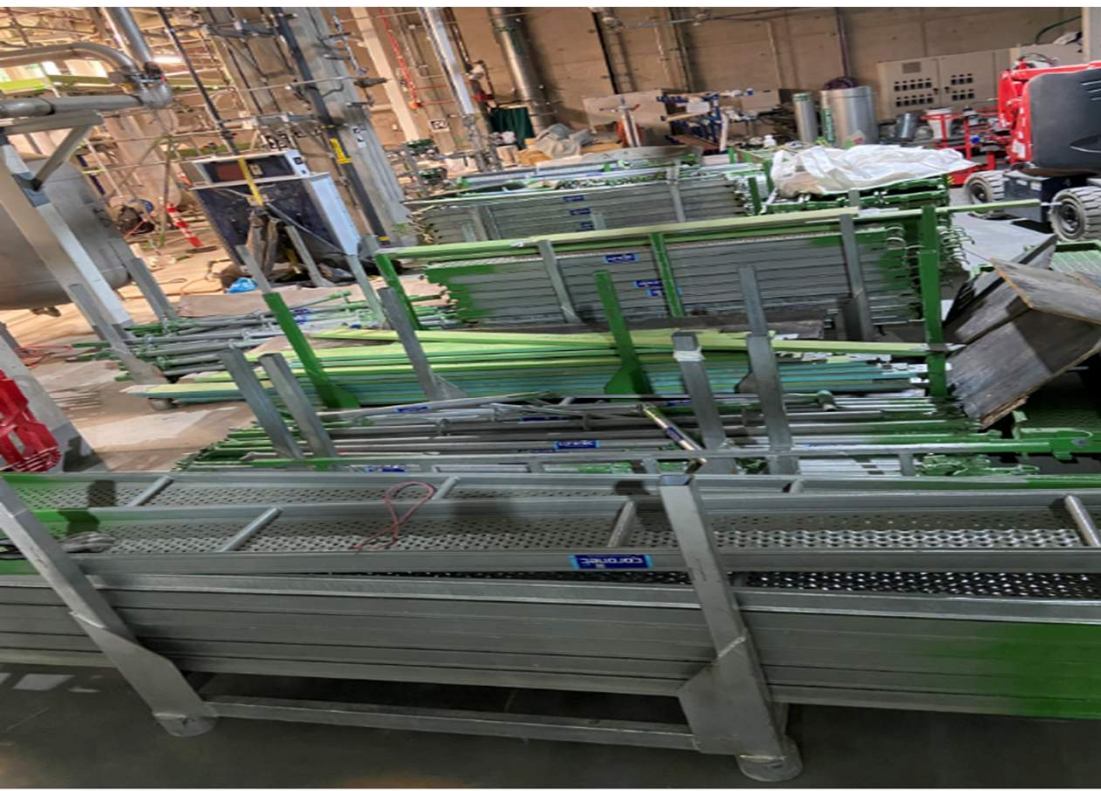
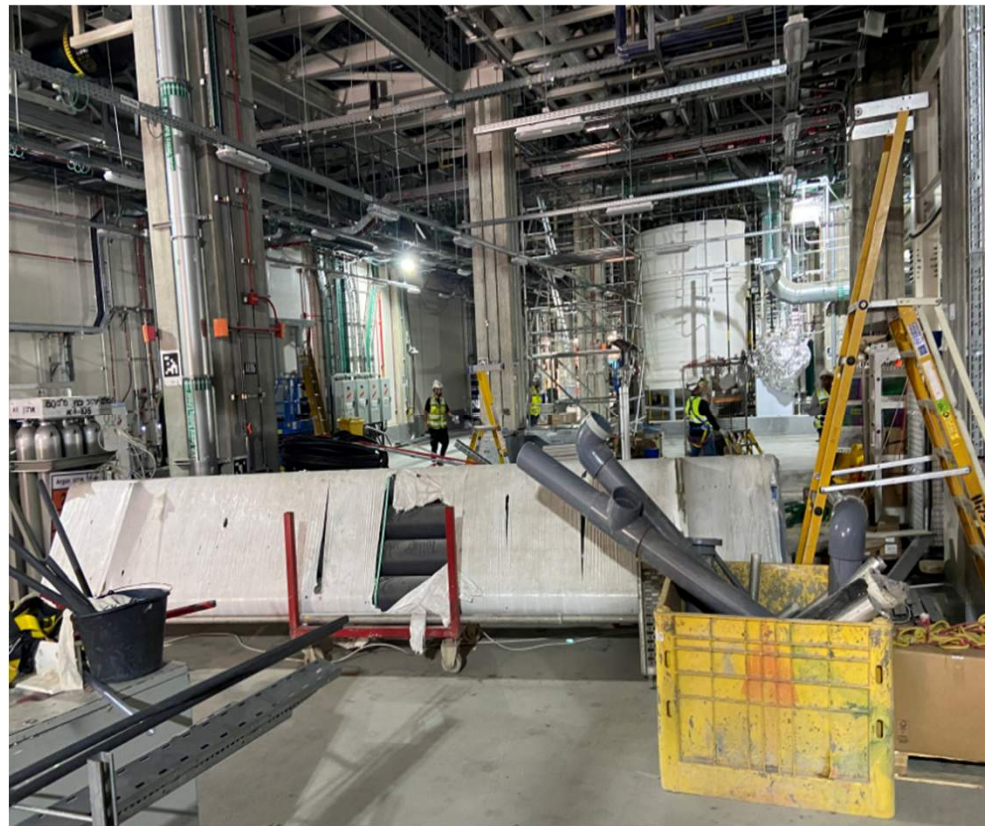
SUT 38.1 LEVEL













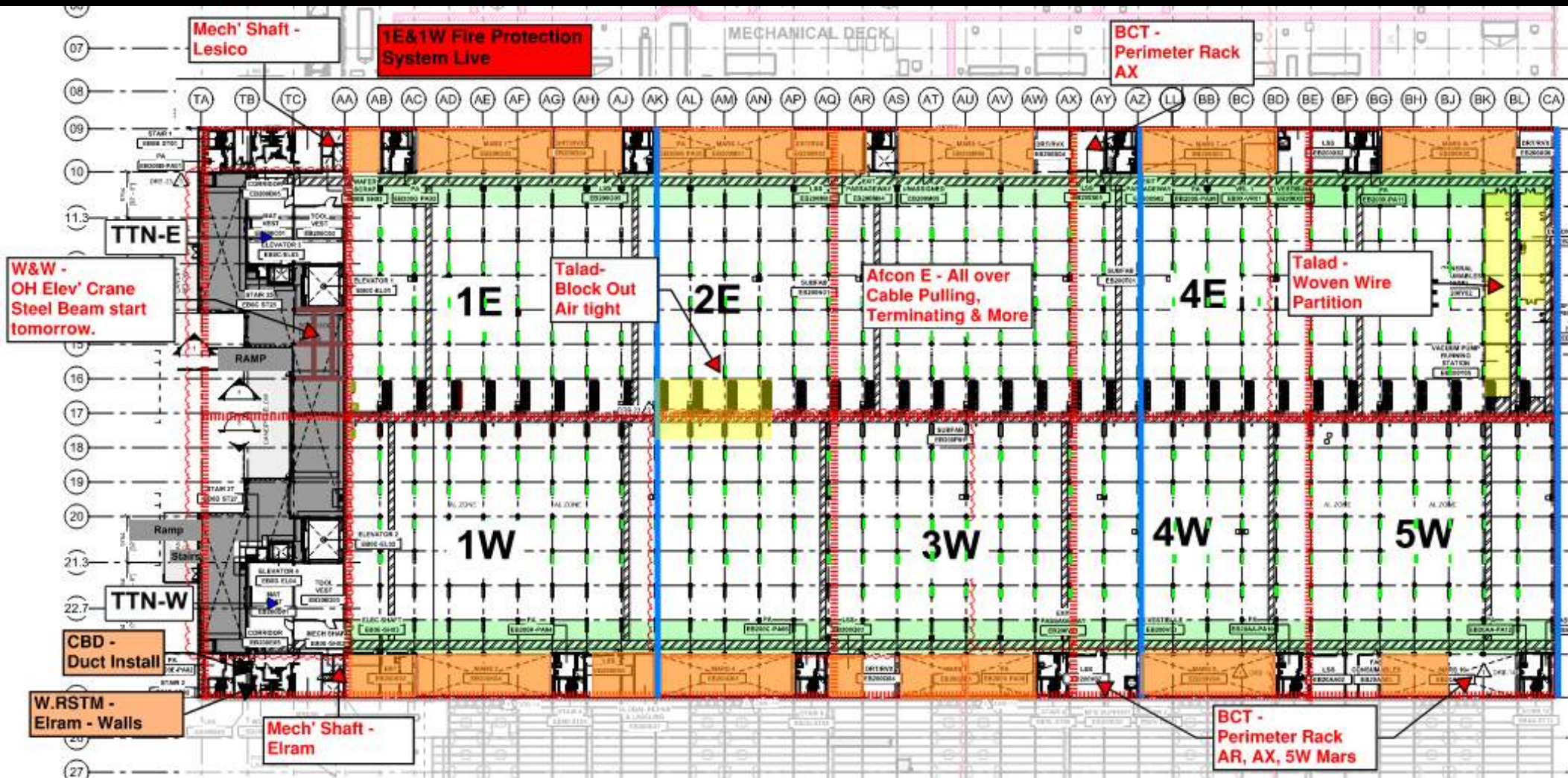
SUT 1 IS NOT STORAGE AREA

**NEED CLEANUP& EVACUATE ALL MATERIALS &
TOOLBOXES**

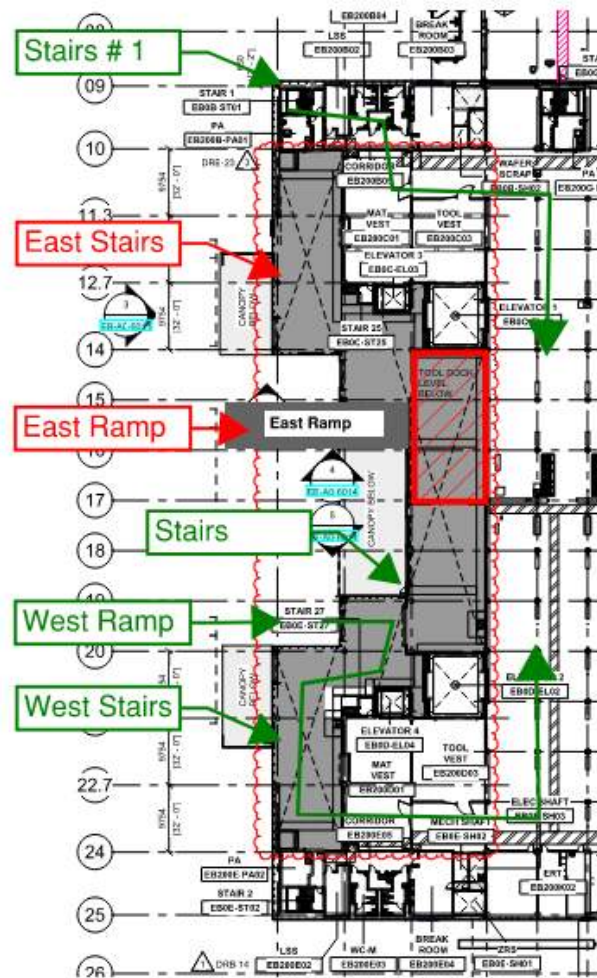
**TILL EOW 10TH MUST EVACUATE ALL MATERIALS,
OTHER WISE ON 13TH HCC WILL THROGHT
UNAPPROVED STUFF TO DUMSTER!!**

**EVERY TOOLBOX OR MATERIALS MUST BE
APPROVED - TALK TO HCC SUP- IBRAHIM**

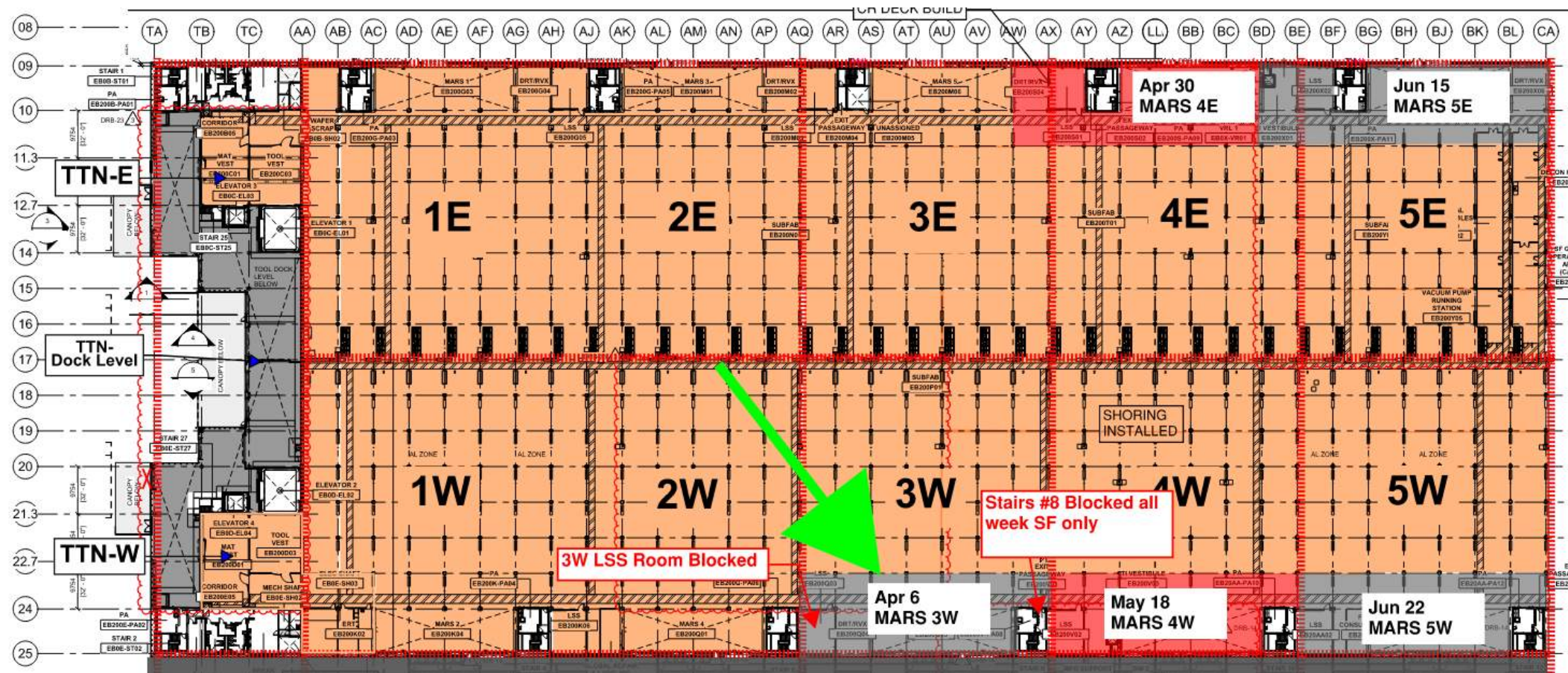
SUBFAB BUILDOUT MOD 1



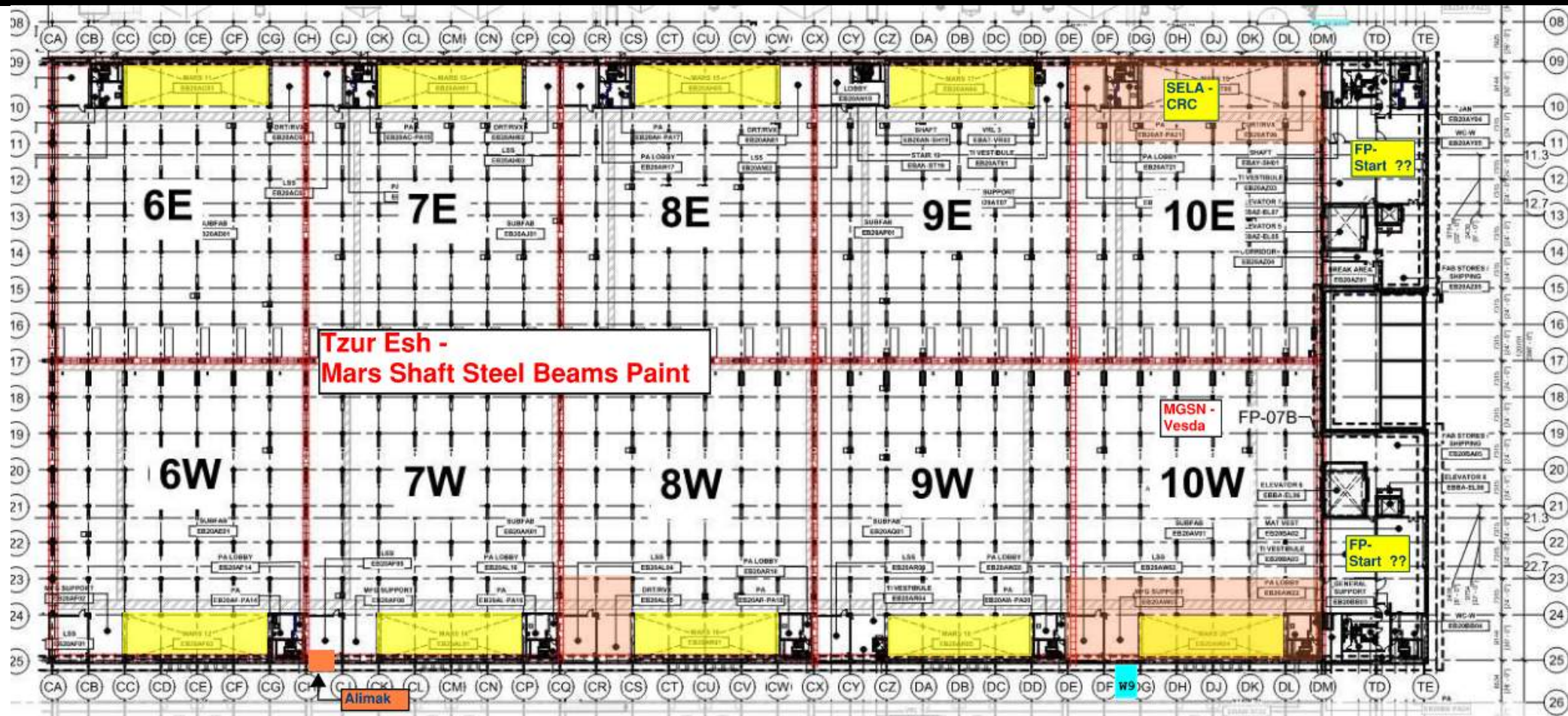
W&W Elev' Crane Beams

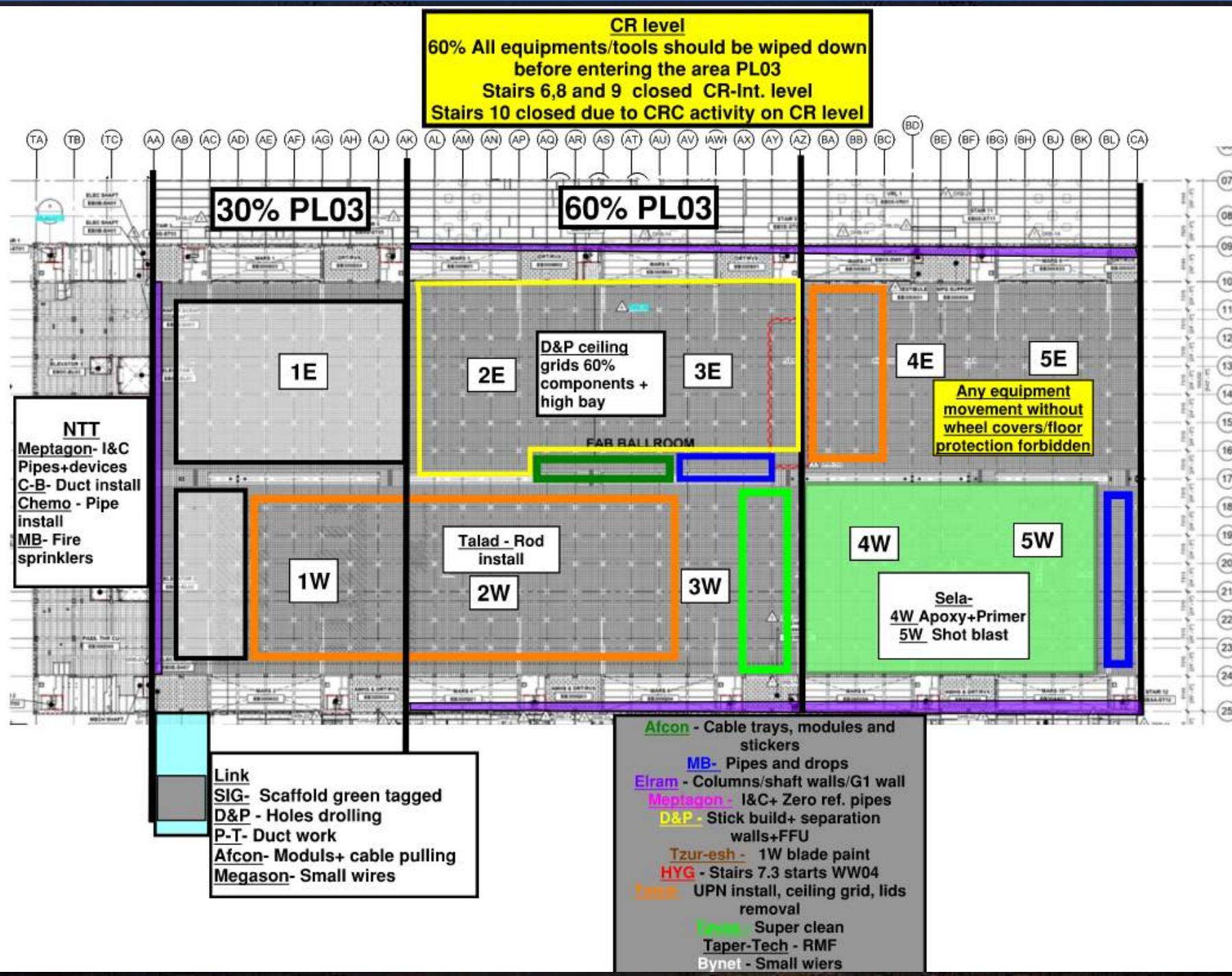


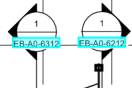
SUBFAB CRC TOPCOAT



SUBFAB BUILDOUT MOD 2







JIB CRANE LIFTING ZONE

Afcon - Cable trays, modules and stickers

MB - Fire sprinklers

Elram - Gypsum/G1 wall

Chemo - Skids and pipes

SK - IA pipes

Tzur-esh - Paint+ touch ups

WW - Cat walk

RPC - 4DA/5DA FP

Tavas - Super clean

Bynet - Communication weirs

Megasone - Speakers

Meptagon - I&C

Int. level

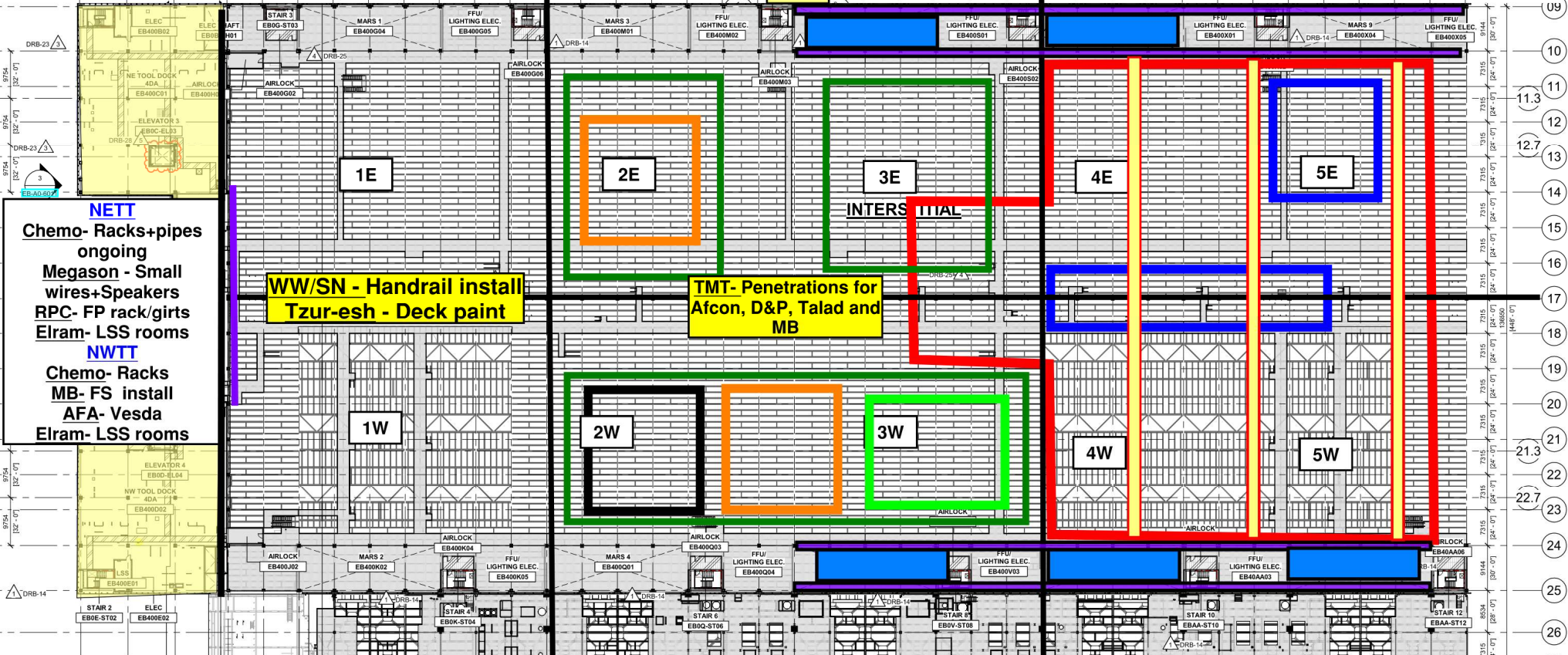
Walk on FRP is approved.

Do not move carts/ stage material without plywood

TA TB TC AA AB AC AD AE AF AG AH AJ AK AL AM AN AP AQ AR AS AT AU AV AW AX AY AZ BA BB BC BD BE BF BG BH BJ BK BL CA

30%

60%



NETT

Chemo- Racks+pipes ongoing

Megasone - Small wires+Speakers

RPC - FP rack/girts

Elram - LSS rooms

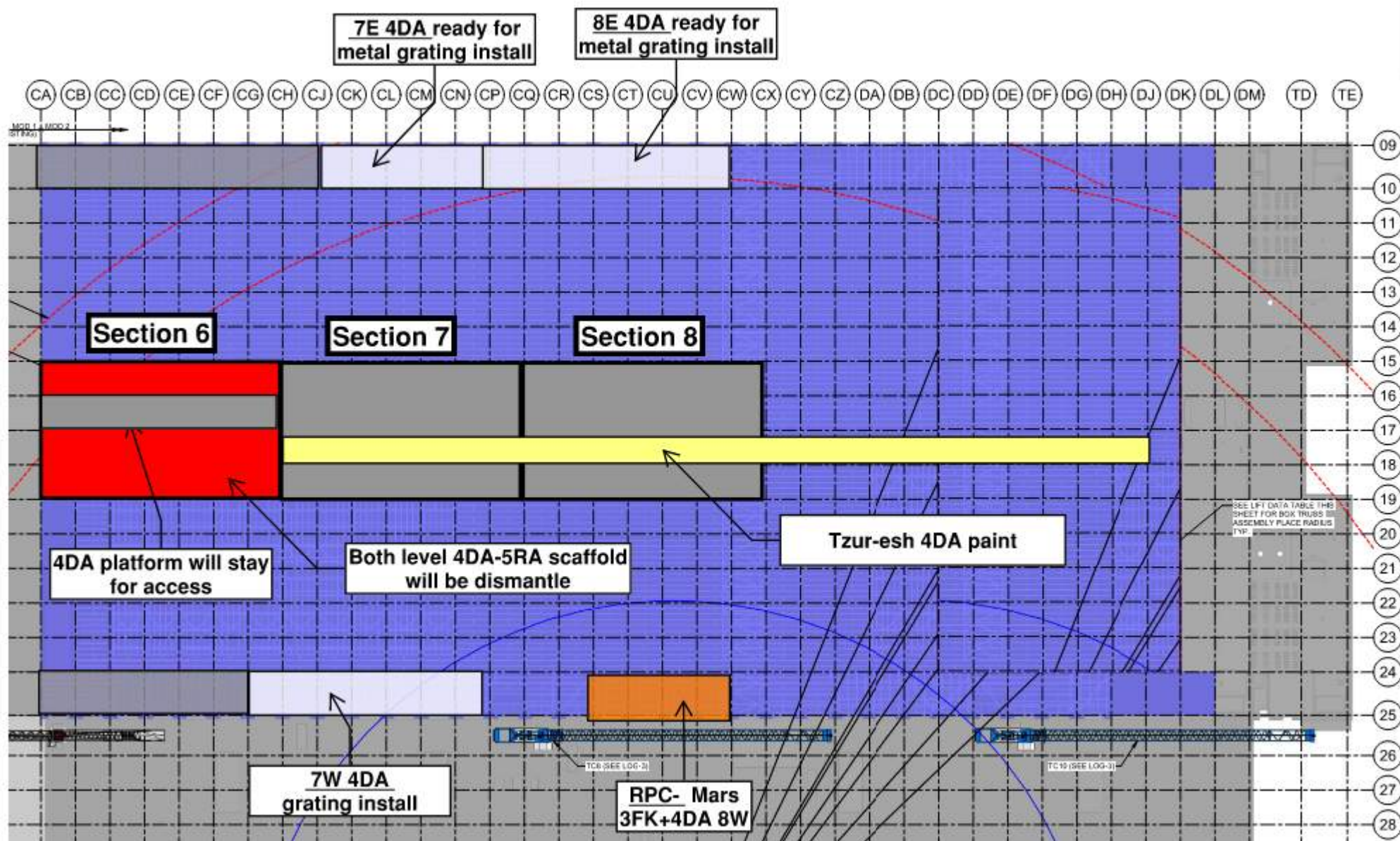
NWTT

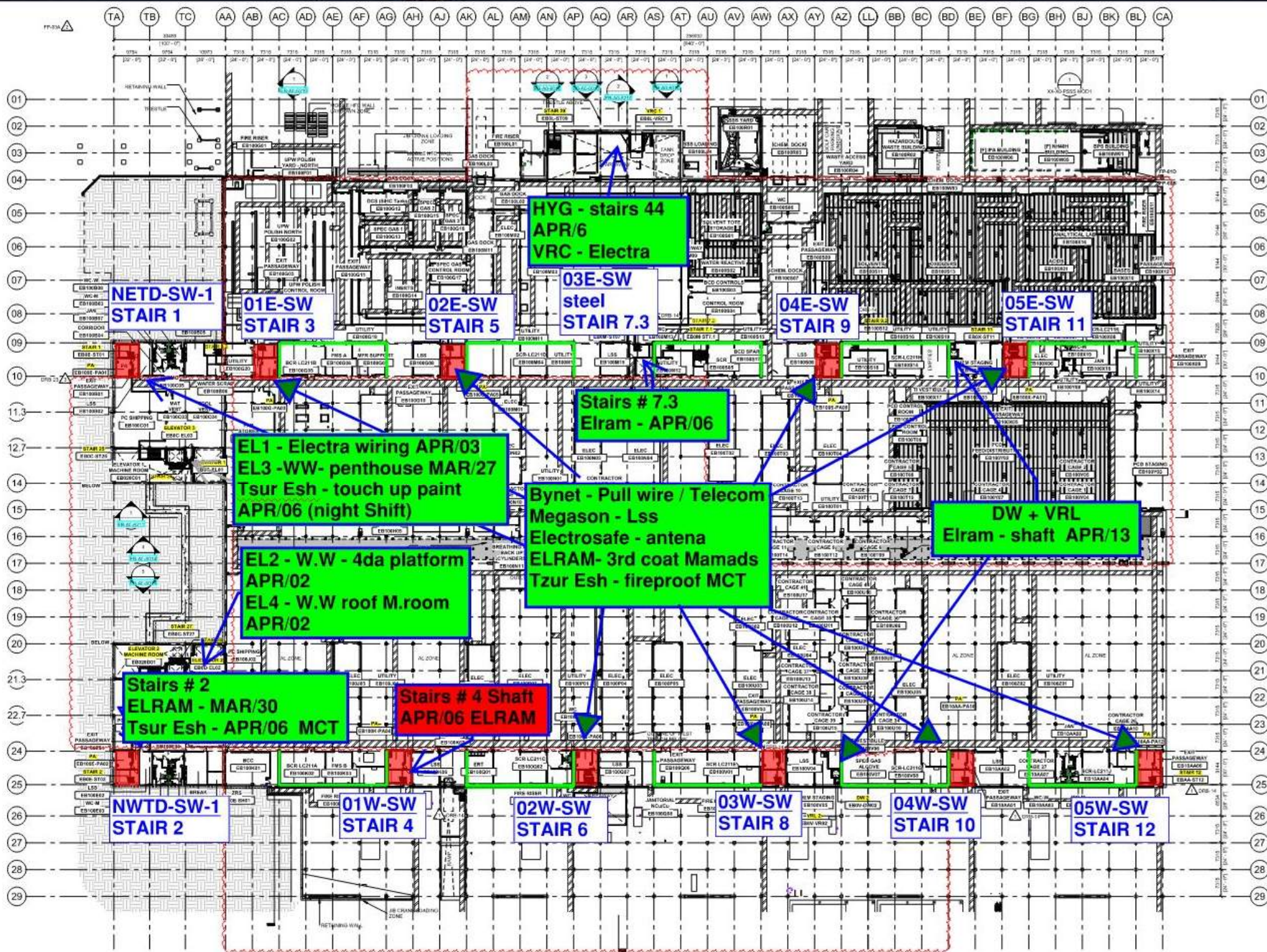
Chemo- Racks

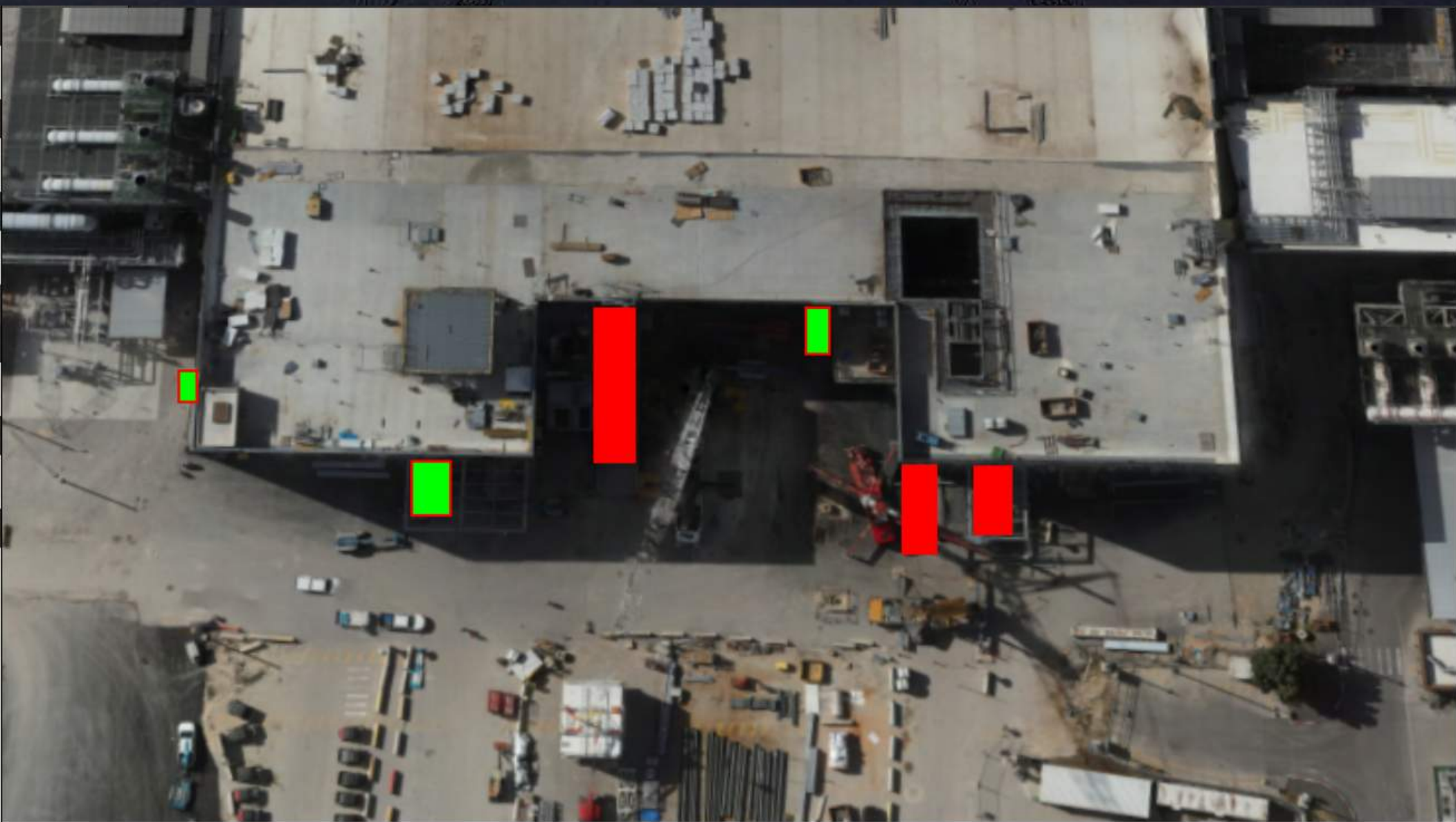
MB - FS install

AFA - Vesda

Elram - LSS rooms







MOD 2 WESTSIDE GIRTS/SIDING

READY FOR GIRTS 

INSTALLING GIRTS 

READY FOR PANELS 

PANELS INSTALLED 

2602/ 2601	M I M O	2612/ 2611	MIMO 2622/ 2621	2632/ 2631	2642/ 2641	2652/ 2651	2812/ 2811	2822/ 2821	2832/ 2831	2842/ 2841	2852/ 2851
---------------	------------------	---------------	-----------------------	---------------	---------------	---------------	---------------	---------------	---------------	---------------	---------------

MOD 2 EASTSIDE GIRTS/SIDING



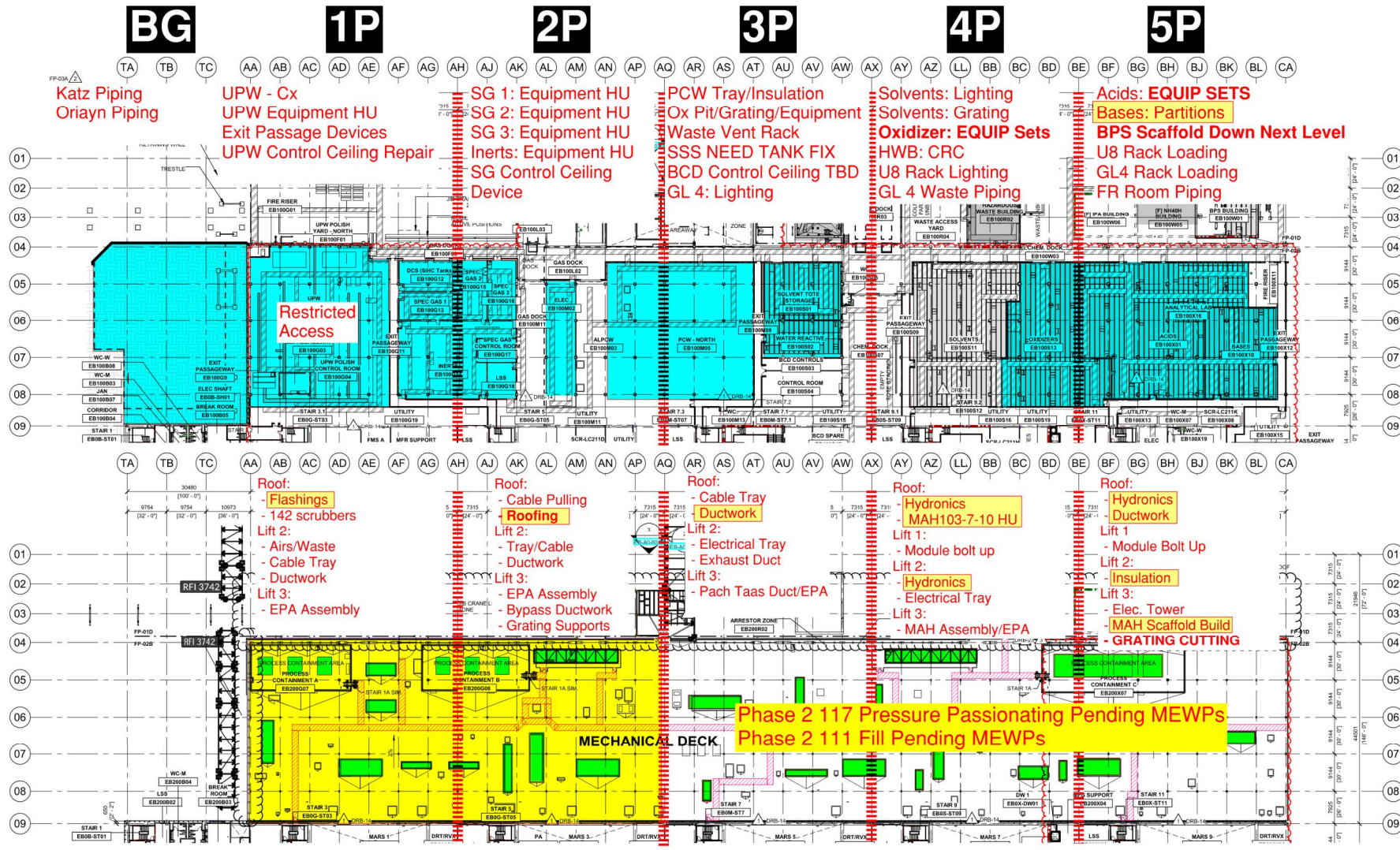
2752/ 2751	2742/ 2741	2732/ 2731	2722/ 2721	2712/ 2711	2552/ 2551	2542/ 2541	2532/ 2531	2522/ 2521	2512/ 2511	2502/ 2501
---------------	---------------	---------------	---------------	---------------	---------------	---------------	---------------	---------------	---------------	---------------

READY FOR GIRTS	
INSTALLING GIRTS	
READY FOR PANELS	
PANELS INSTALLED	

PSSS.1

Utility Level
1YA

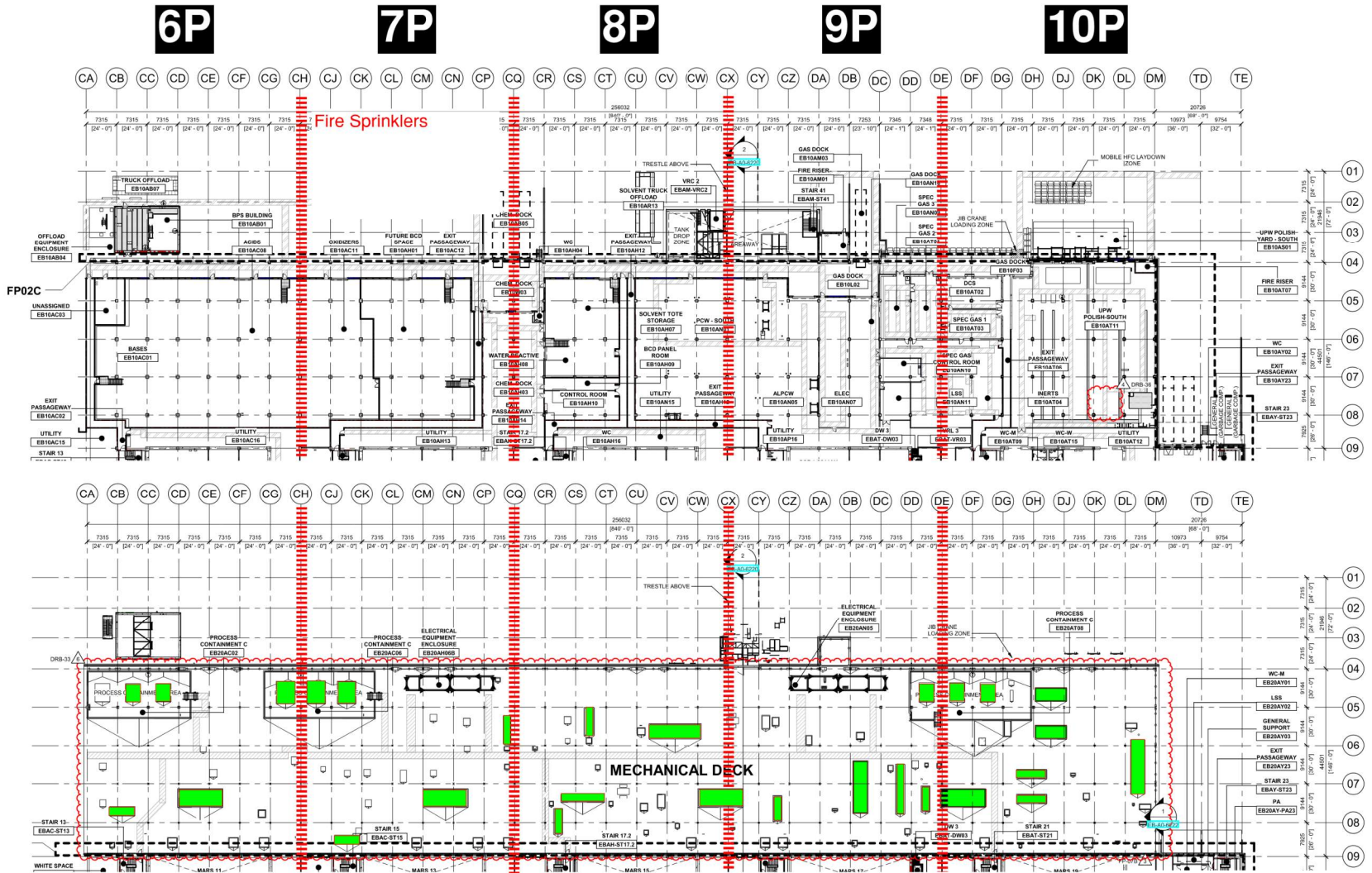
PSSS Roof
2SA



PSSS.2

Utility Level 1YA

PSSS Roof 2SA



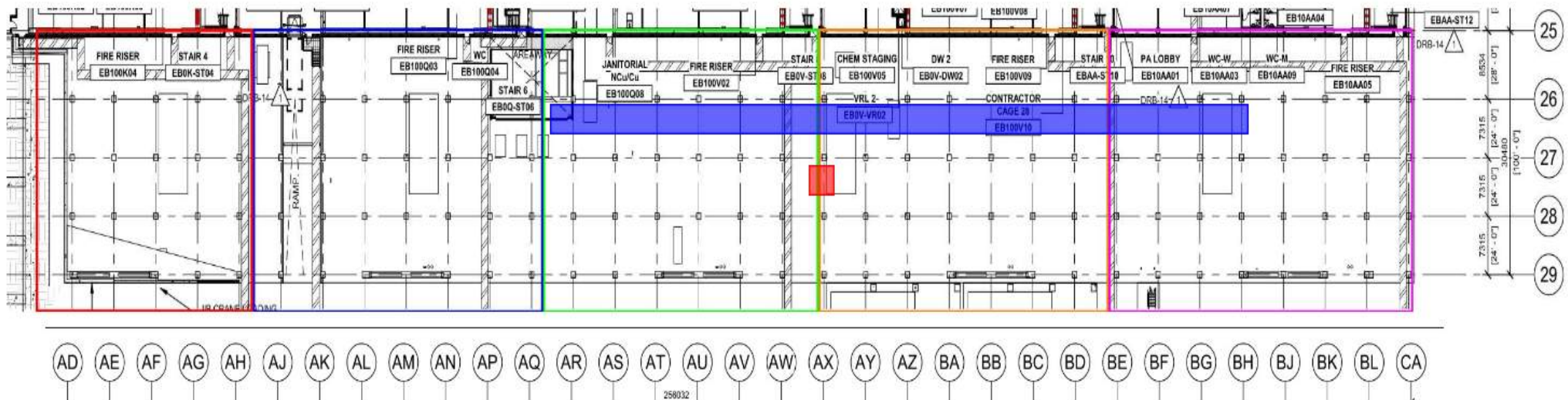
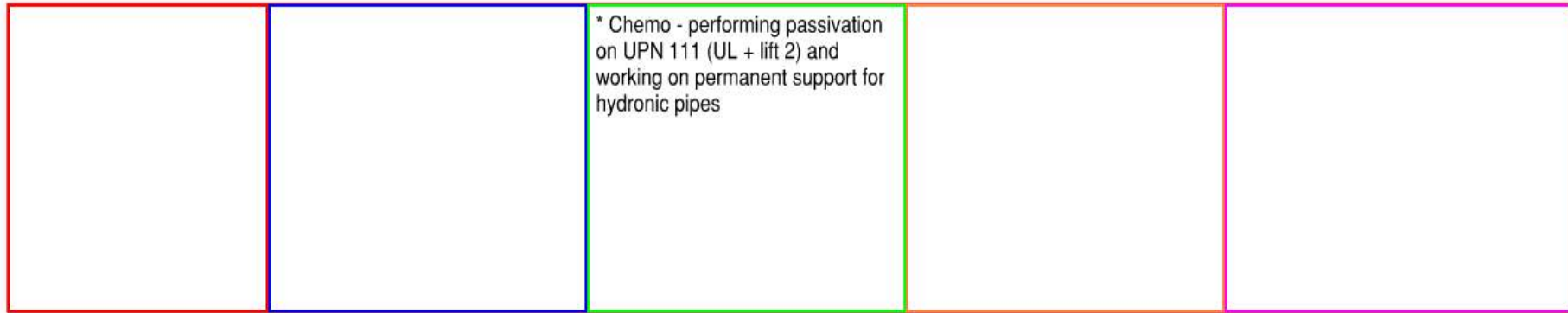
BGY GN2 Purging

14th- 17th
Intermittent
noise

18th-20th
continuous
noise
BGY Closed



WJG – UL

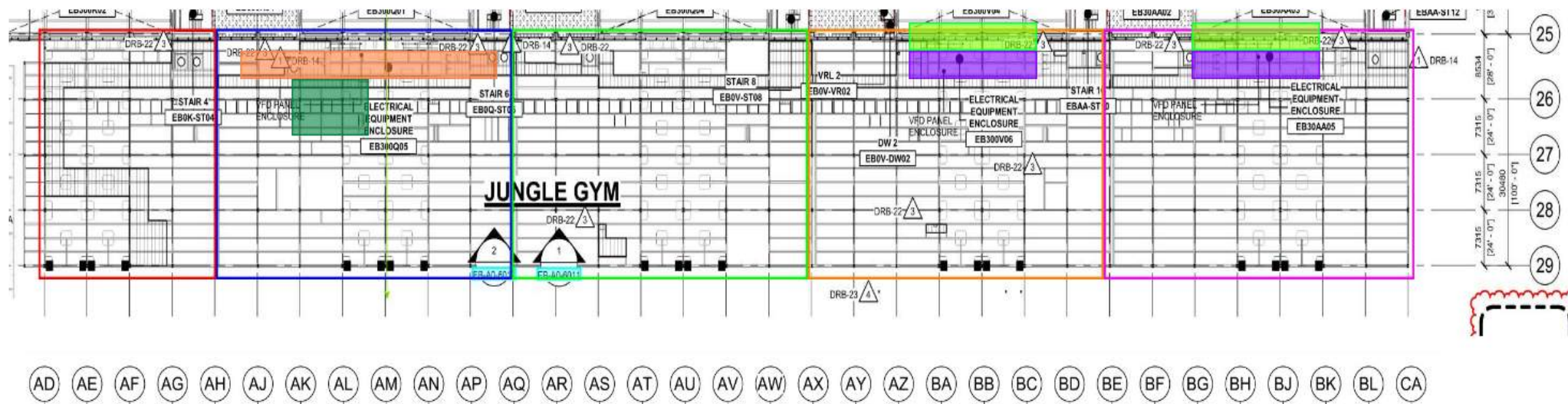


WJG – Lift 2

* Chemo - started restoration on UPN 113

* Carmel Bidud - fixing planking and removing handrails behind 4J and 5J VFD.

* Chemo - performing passivation on UPN 111 (UL + lift 2)
* SK - installing drains behind 4J and 5J VFD



WJG – Lift 3

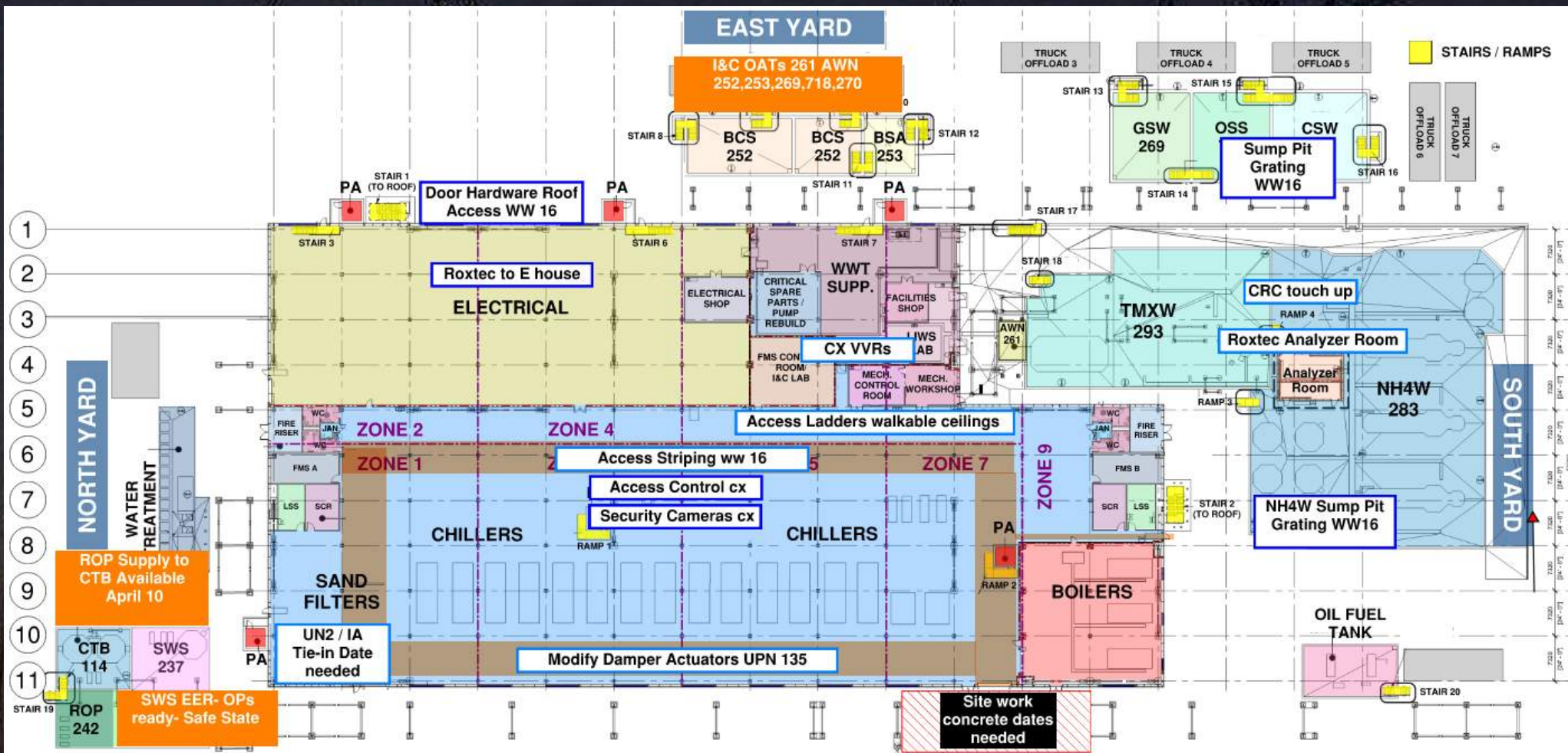


Crane logistics

Crane: 750 ton crane
moved south of RCTO
Tuesday 15/04/25



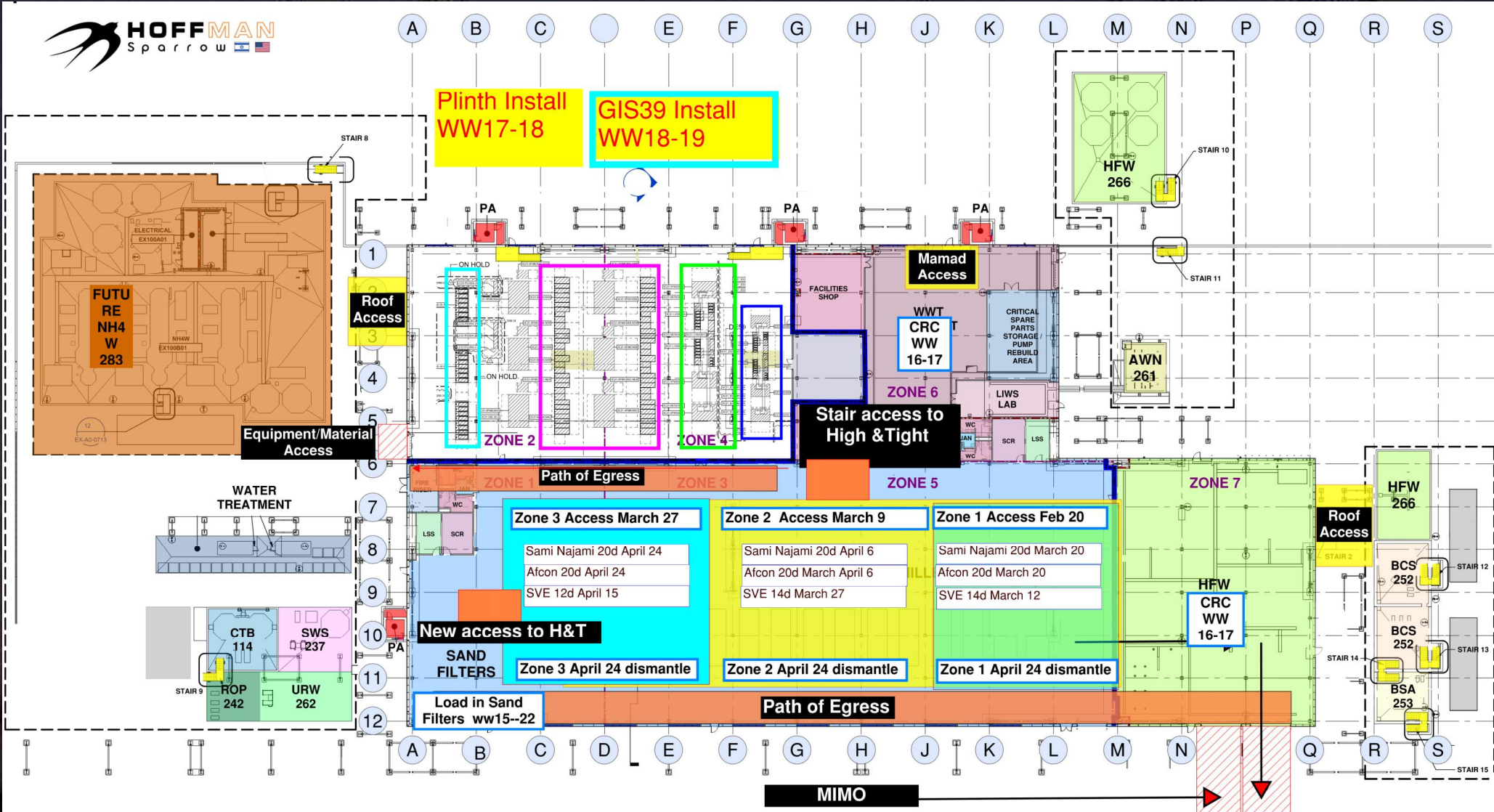
CUB 1 Ops Ready April 29



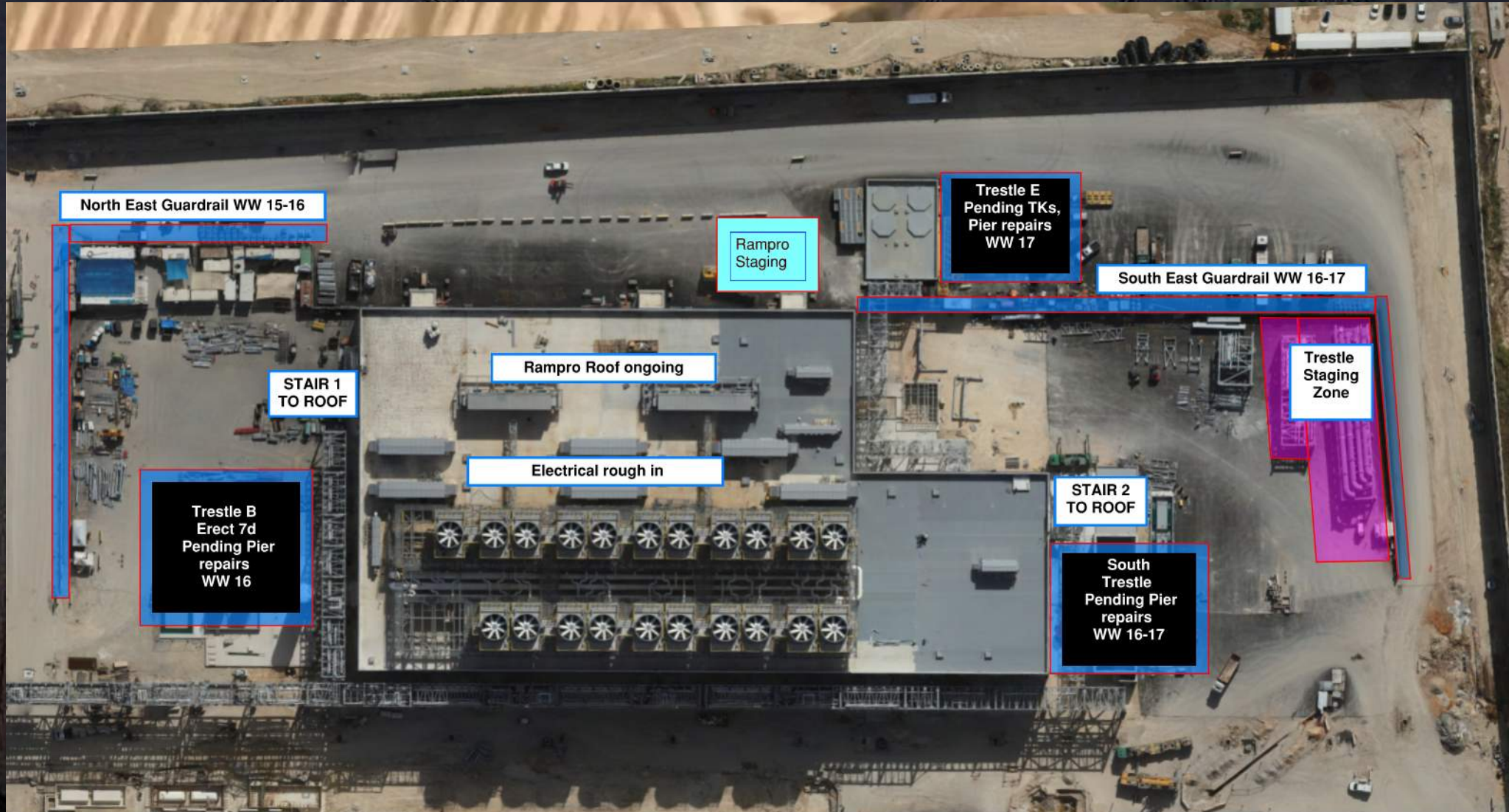
CUB 1 – EXTERIOR/ROOF

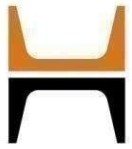


CUB 2- Load in & H&T

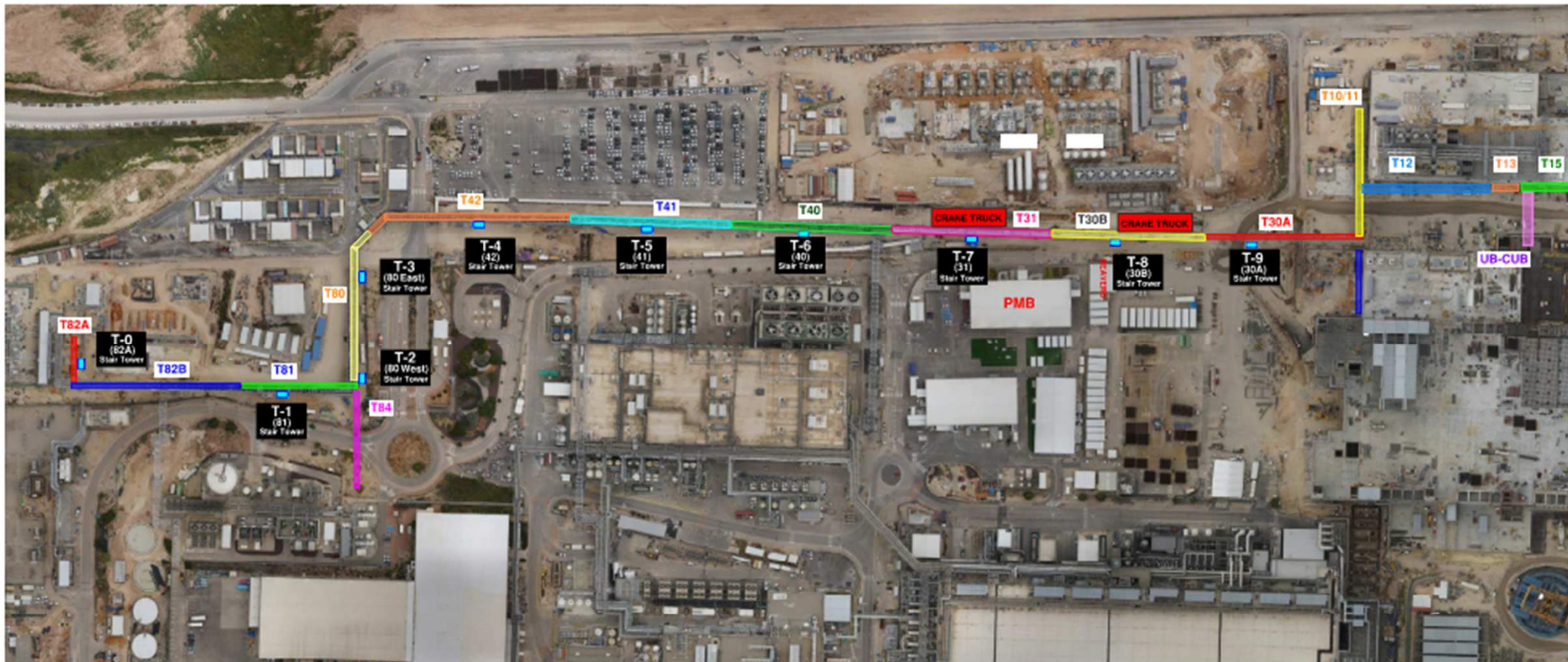


CUB 2- Trestles/Roof/Guardrails





HOFFMAN CONSTRUCTION COMPANY

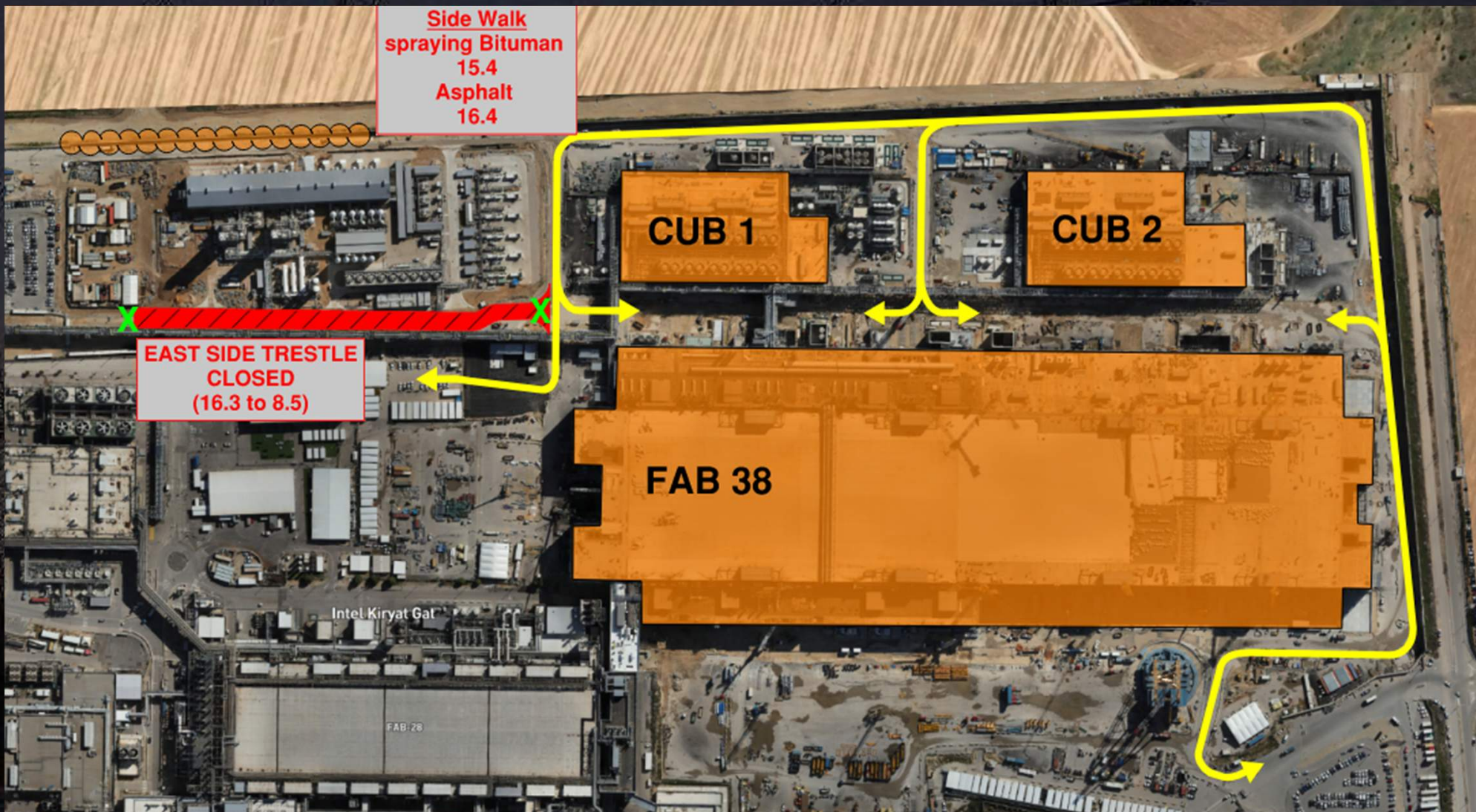




Daily Coordination Meeting

Site Logistics

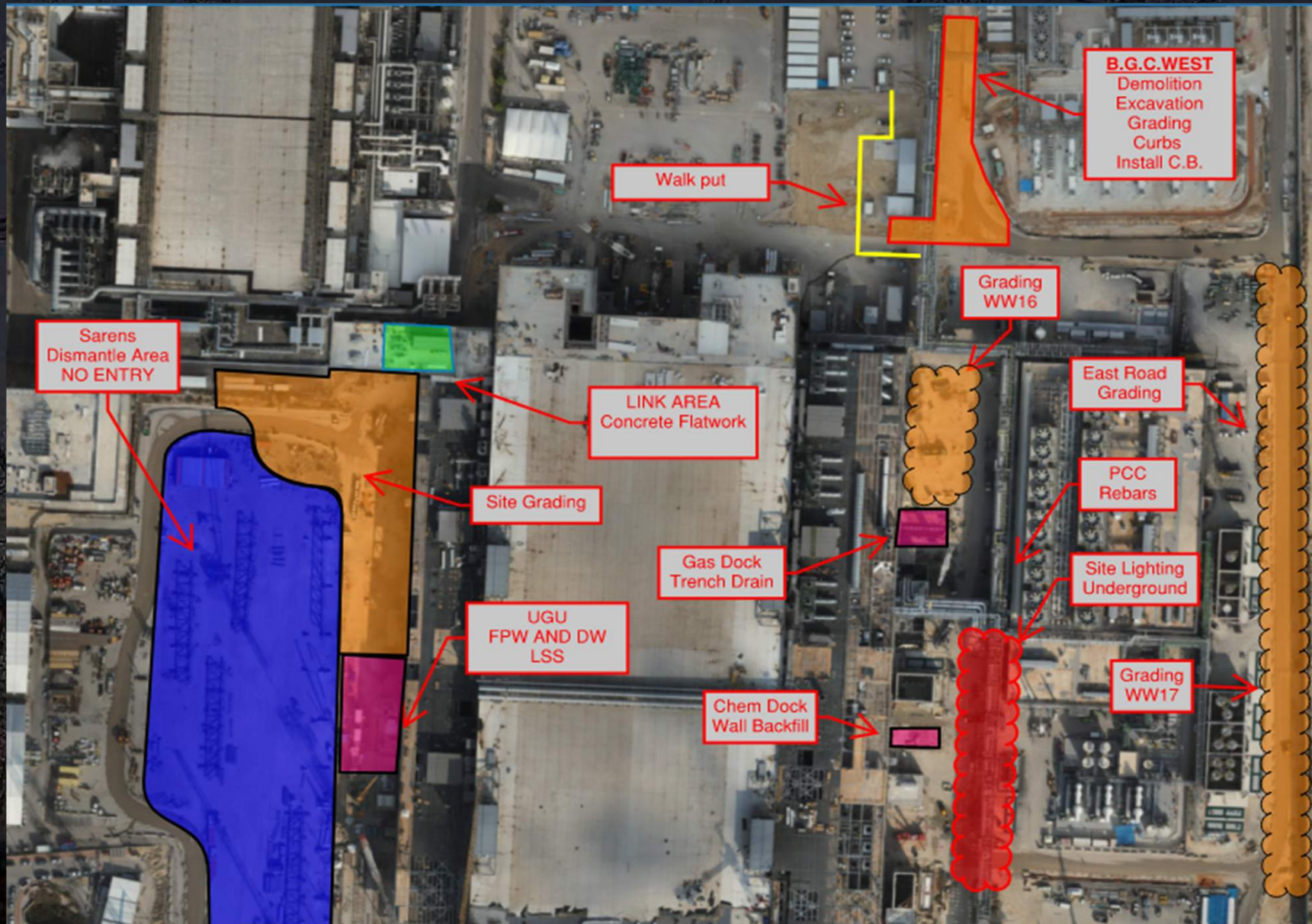
North





Daily Coordination Meeting

Site Logistics North

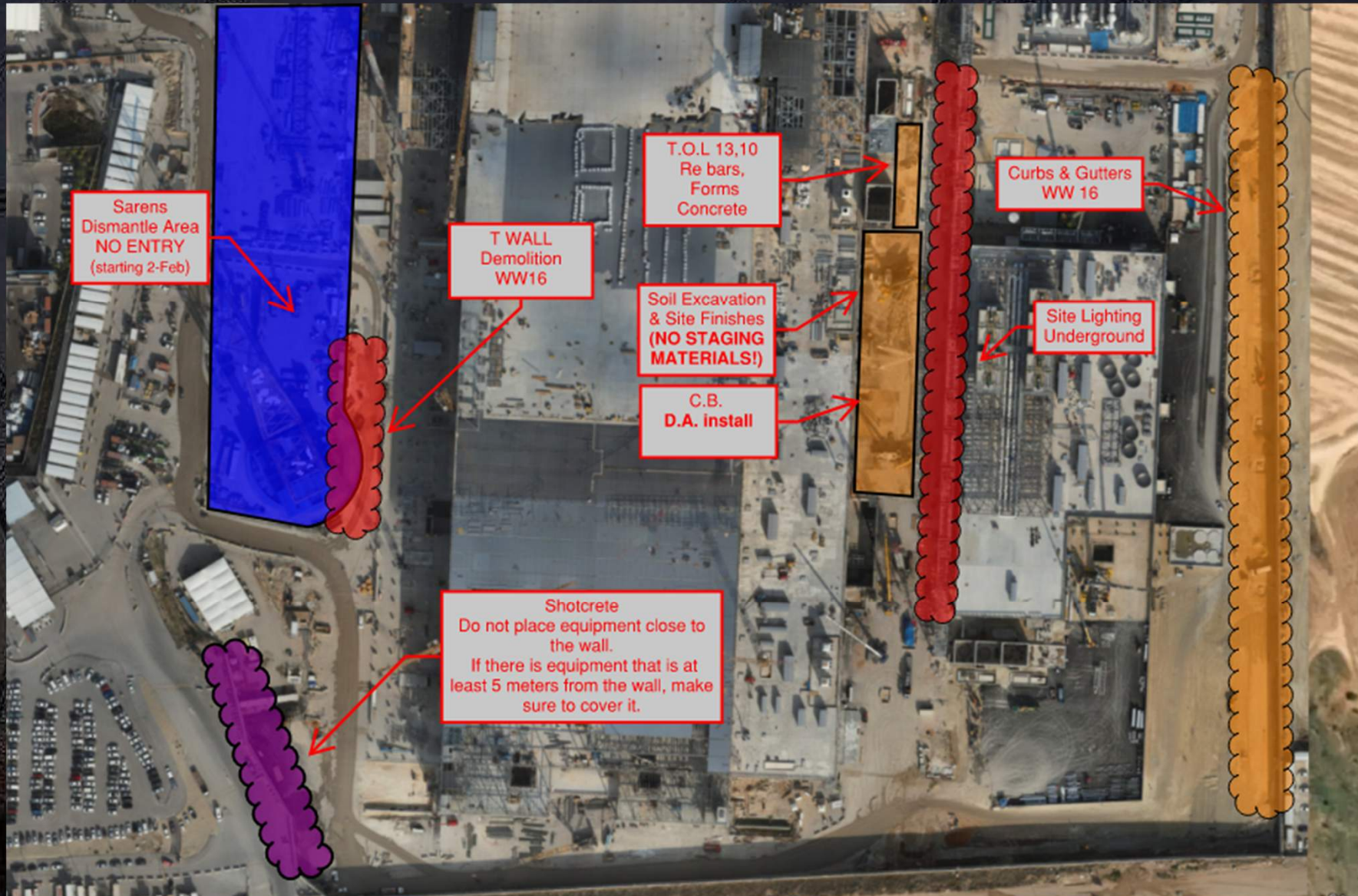




Daily Coordination Meeting

Site Logistics

South





HOFFMAN CONSTRUCTION COMPANY

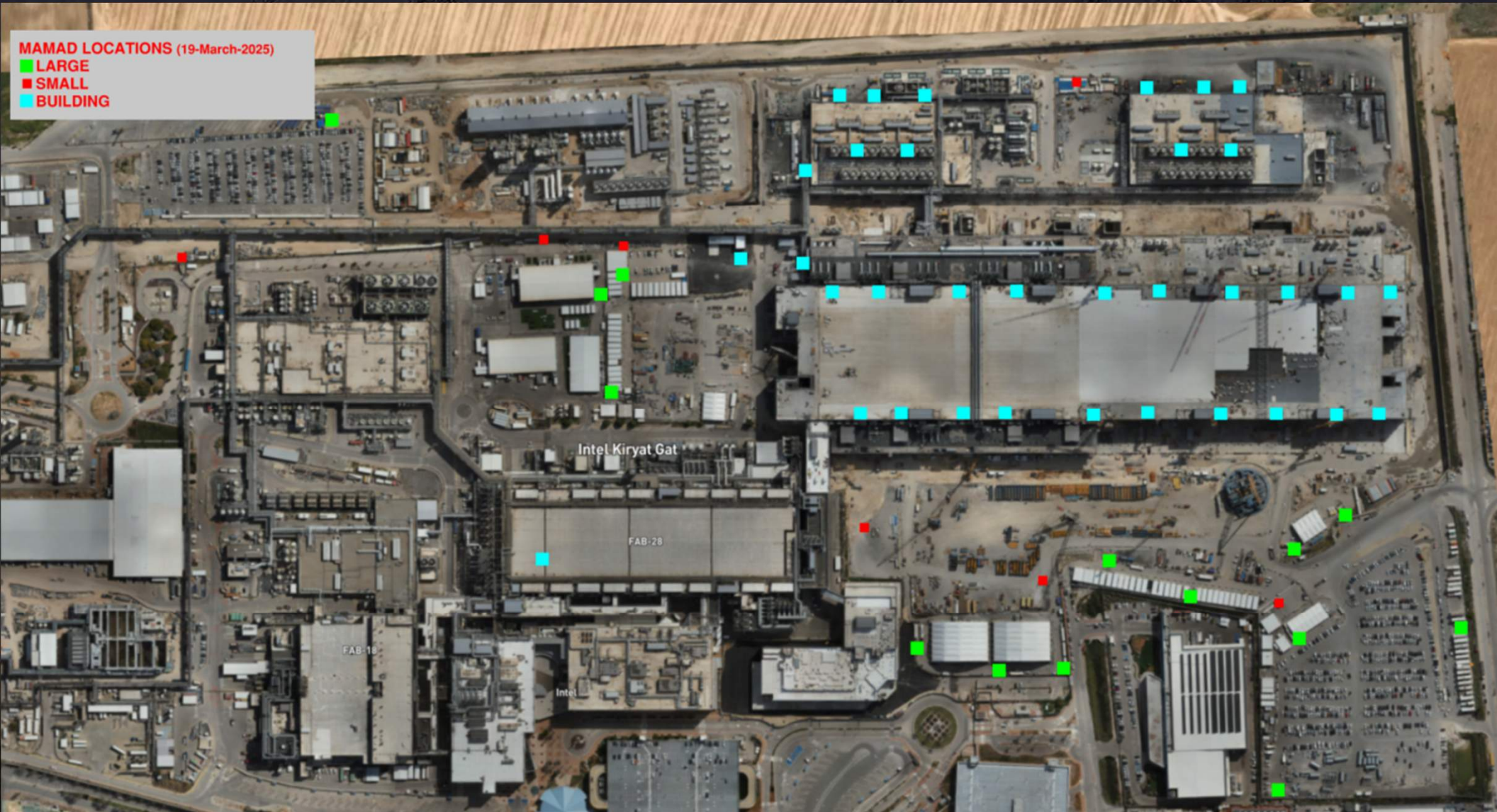


Daily Coordination Meeting

MAMAD Locations

MAMAD LOCATIONS (19-March-2025)

■ LARGE
■ SMALL
■ BUILDING





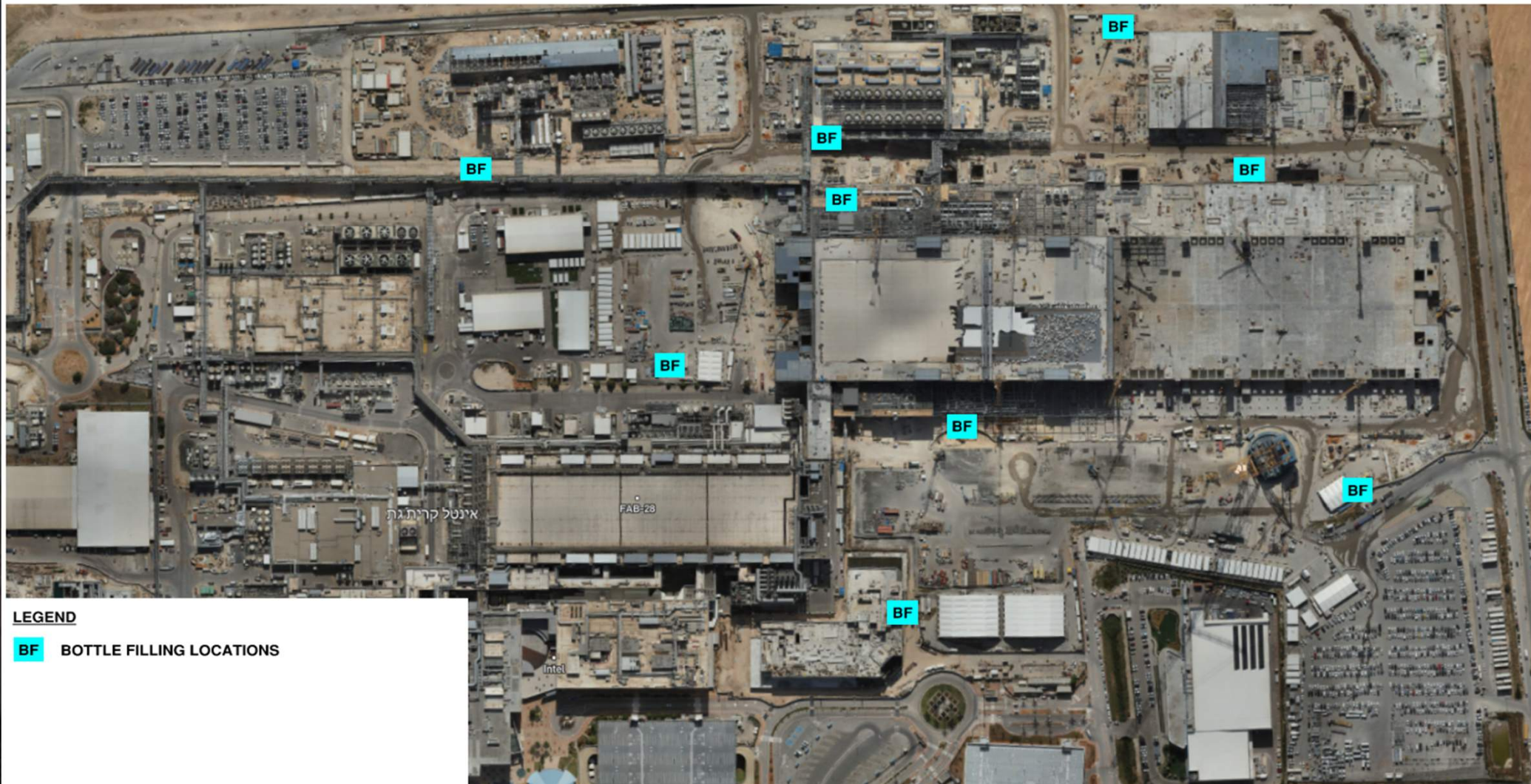
HOFFMAN CONSTRUCTION COMPANY

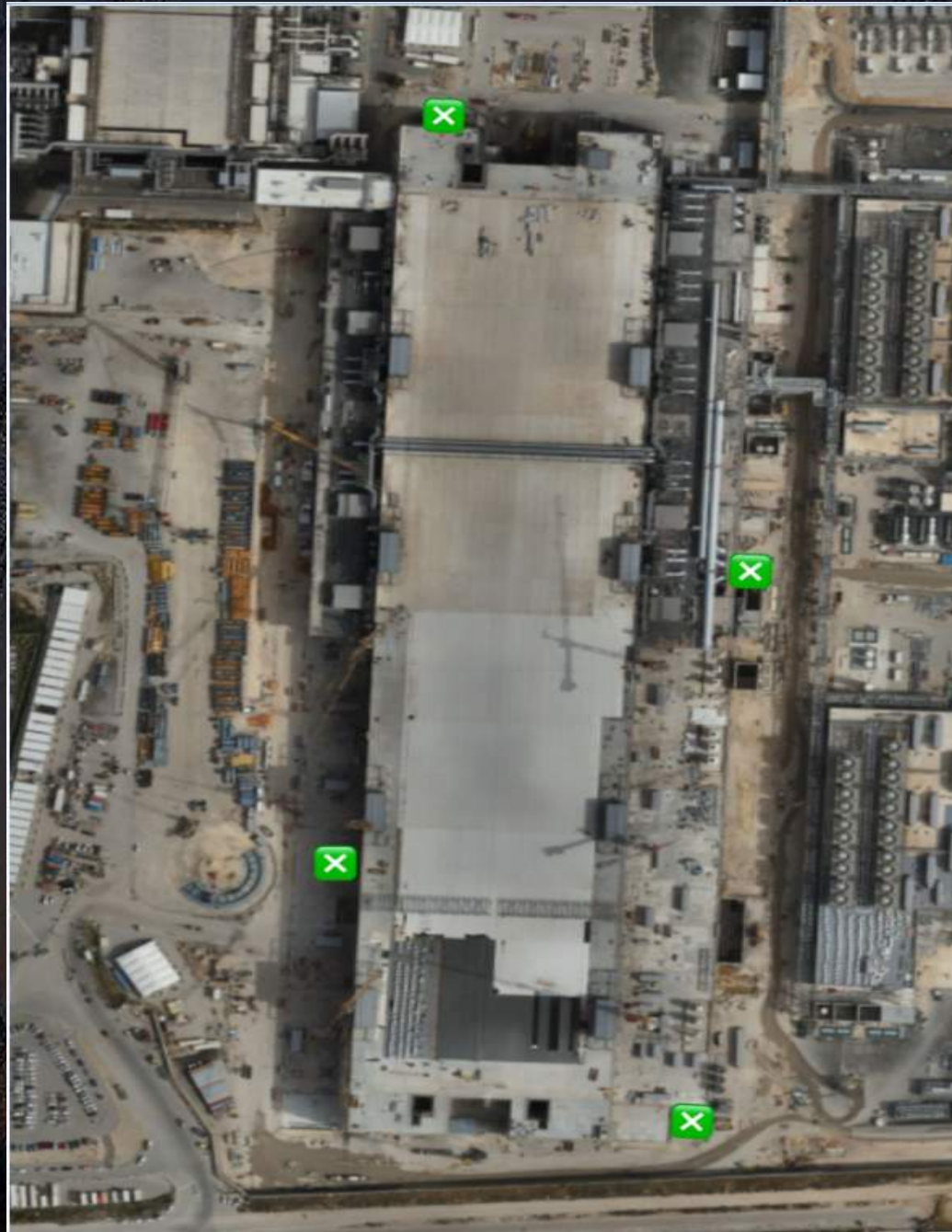


Daily Coordination Meeting

WATER BOTTLE FILLING STATIONS

WATER BOTTLE FILLING STATIONS





BACK TO WORK REQUIREMENTS

B.V.S	A.S Barzel	Afcon Contracting Services	
Carmel Bidud LTD (FAB + PSSS)	Afcon Control	Avi Cranes	
CHEMO AHARON LTD (FAB)	BCT PIPELINE PROCESSES LTD	E.L Fireproof LTD	
D&P Clean Room Ltd	BRAND INSUSTRIAL LTD	Electra Elevator	
DVIR.IE LTD	ByNet System Application Ltd	GLOBUS WORLDWIDE LOGISTICS	
ELECTROSAFE LTD	Derech Afar LTD	HB	
EL-MORE ELECTRIC	MALCHIMIM BADAROM	HYG STEEL 1990 LTD	
ELRAM PROJECT LTD	Shuv Eli Electric Engineering Ltd	JACOBS	
ES Entry Systems LTD	Tavas Cleaning and Security LTD	LVTH	
ETC Systems LTD	W&W - AFco Steel LLC	MEGASON ELECTRONIC & CONTROL 1987 LTD	
Gamida	Afcon Control and Automation Ltd	ORIAYN ADVANCED TECNOLOGY SYSTEMS, LTD	
Lesico LTD	COMBE LTD	QA- AMTS, Q+,DPS	
Newco - Tec LTD	Katz Arie Stainless Steel	Rescue 1	
Rolling Plains Constriction Inc	Meptagon LTD - I&C/ LSS	Sela Industrial Maintenance 2006LTD	
Sami Najami Engineering & Project LTD	Pach Taas LTF (Ashkelon)	Siemens Industrial LTD	
SIG Industrial LTD		Skyline Cranes& Technologies	
SK ENGINEERING & PROJECT (CUB)		Stage Design Ltd	
Talad T.S LTD		TEAM3 LTD	
TM TEAM LTD		TZUR ESH PROJECTS LTD	
TM TEAM LTD- Job service			
Yerushalmi Water Cooling Tower LTD			
Olizki Infrastructures LTD			
s-k Makam Engineering			

BACK TO WORK REQUIREMENTS

1. All workers must go through the training that was done at 7am on the Mass Safety Meeting.
2. Perform audits on all equipment onsite (forklifts, MEWP, cranes, etc.). Upload MEWP checklists.
3. Update all the RAMS that include MEWP.
4. Training on company policies for loaning equipment to others. Make sure each MEWP has a company name on it.
5. Training on new site policy of MEWP use. Have list of all approved operators and spotters for each MEWP. A printed copy has to be on each MEWP.
6. Submit all training records.



Daily Coordination Meeting



14:00 Sign In