

Daily Coordination Meeting



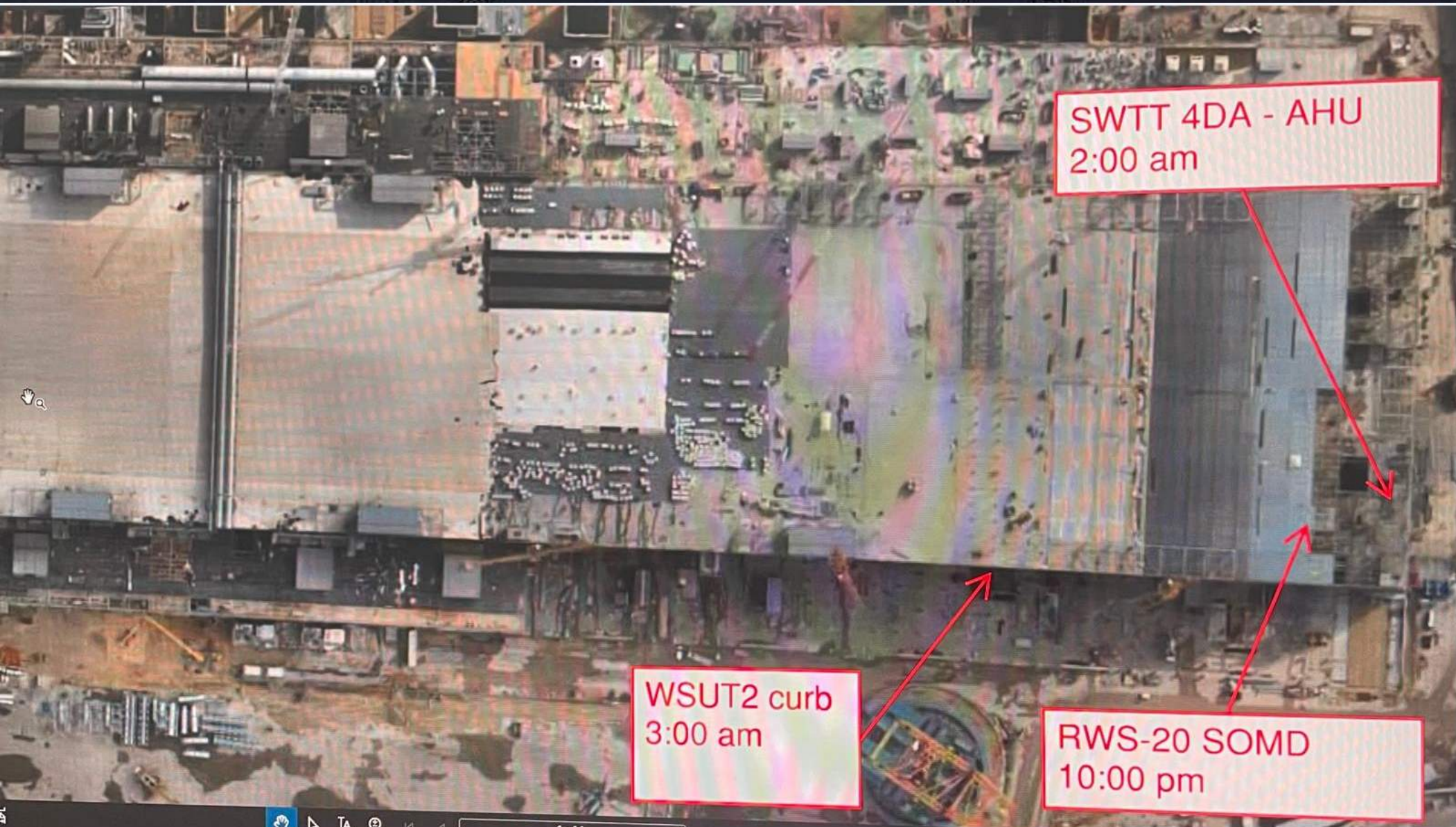
14:00 Sign In



Daily Coordination Meeting

General Topics:

- **Don't Let Complacency Be a Reason for Communication Breakdown**



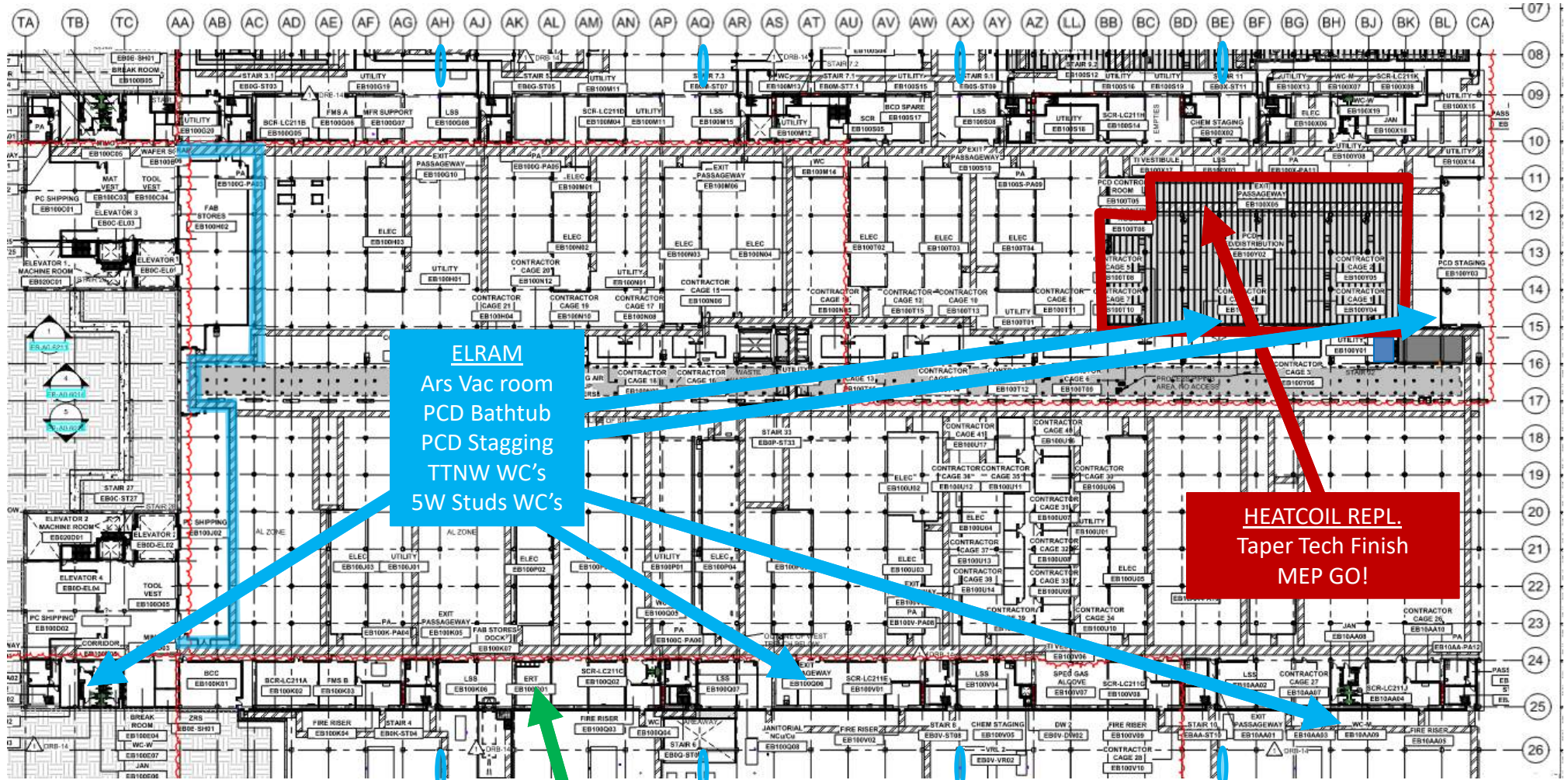
SWTT 4DA - AHU
2:00 am

WSUT2 curb
3:00 am

RWS-20 SOMD
10:00 pm



UTILITY LEVEL MOD1



ELRAM

Ars Vac room
PCD Bathtub
PCD Staging
TTNW WC's
5W Studs WC's

HEATCOIL REPL.
Taper Tech Finish
MEP GO!

AFCON/MALHIMIM
ERT room ceiling install



Utility Level MOD2

Don't bring any material without coordination with Oscar M.

Staggering material is possible but must be coordinated and must follow the rules (no combustibles, nothing touch the floor ETC.)

Thanks.

Utility Level MOD2

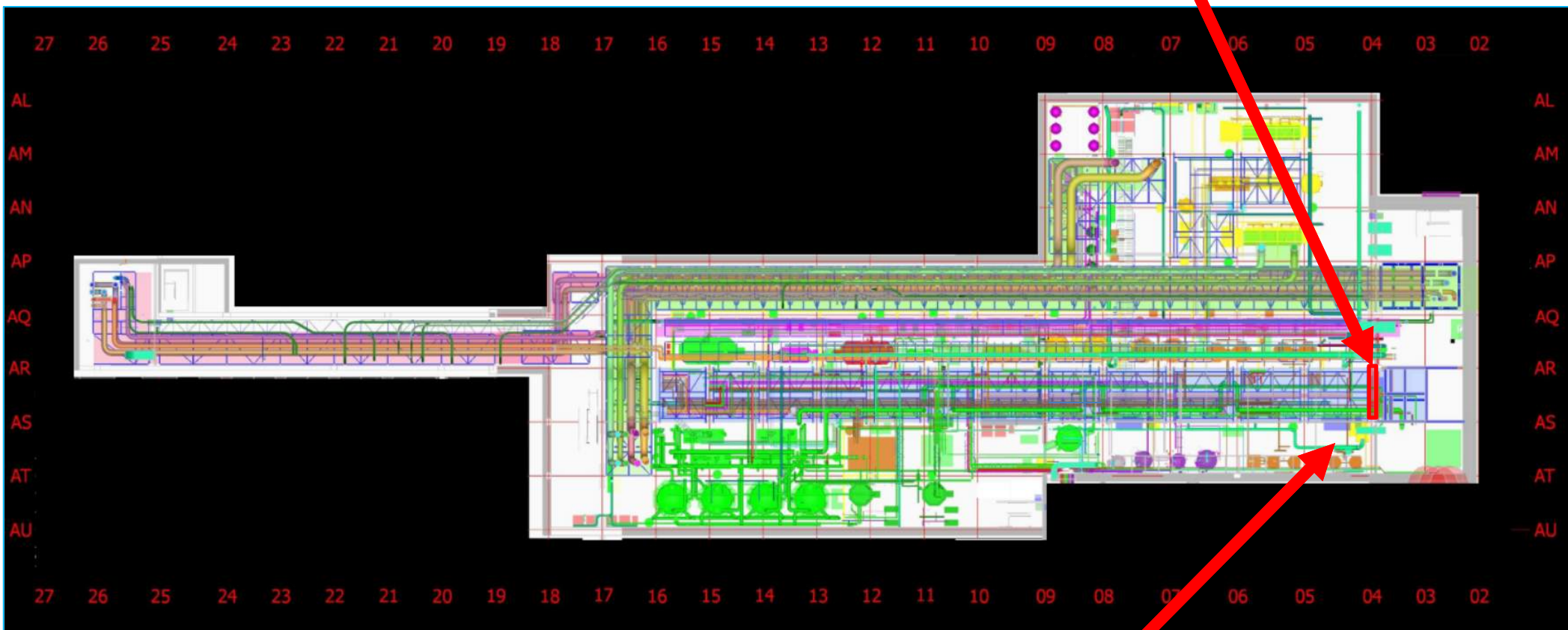
Don't bring any material without coordination with Oscar M.

Staggering material is possible but must be coordinated and must follow the rules (no combustibles, nothing touch the floor ETC.)

Thanks.

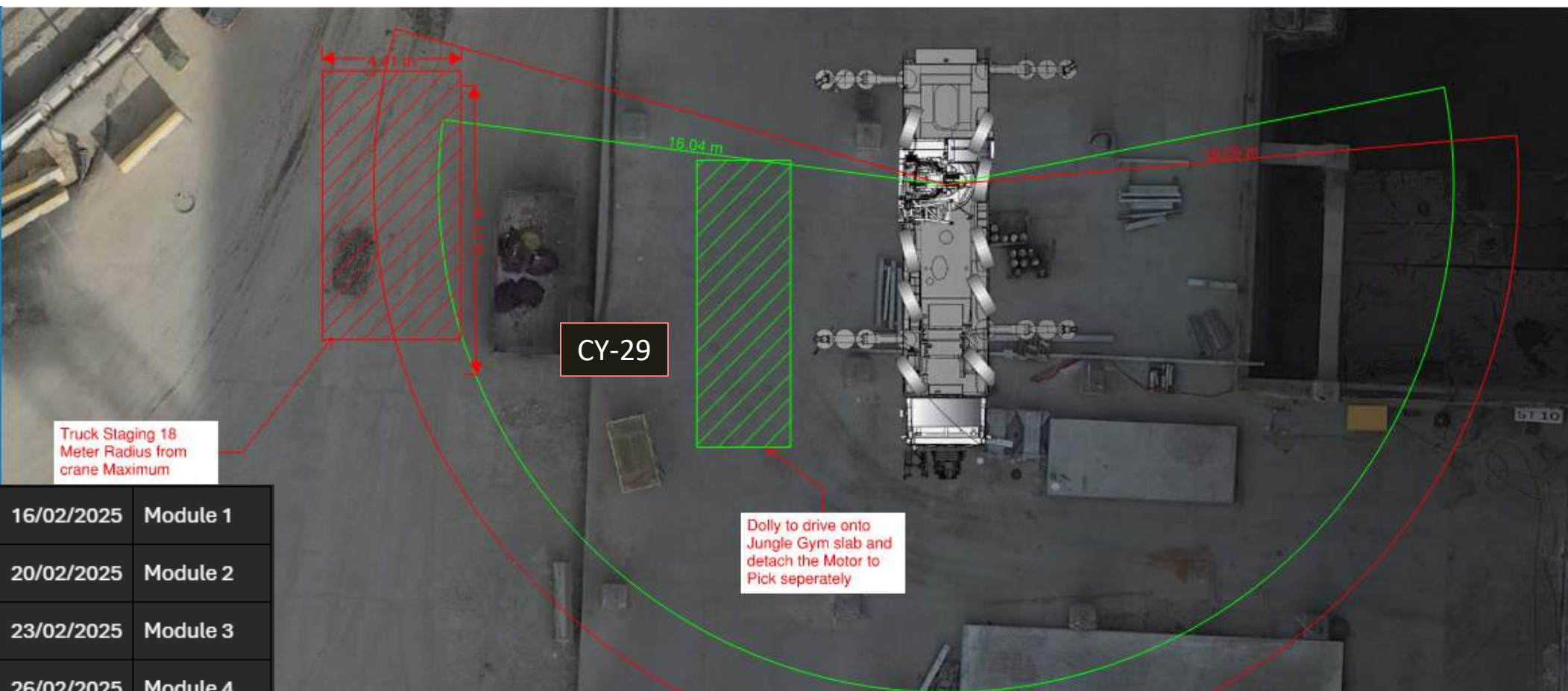
SUT 38.1 LEVEL

OH roll-up door
Install
?



HYG
SOG platform install
Ongoing

West SUT2 Rack 6



16/02/2025	Module 1
20/02/2025	Module 2
23/02/2025	Module 3
26/02/2025	Module 4
02/03/2025	Module 5
04/03/2025	Module 6



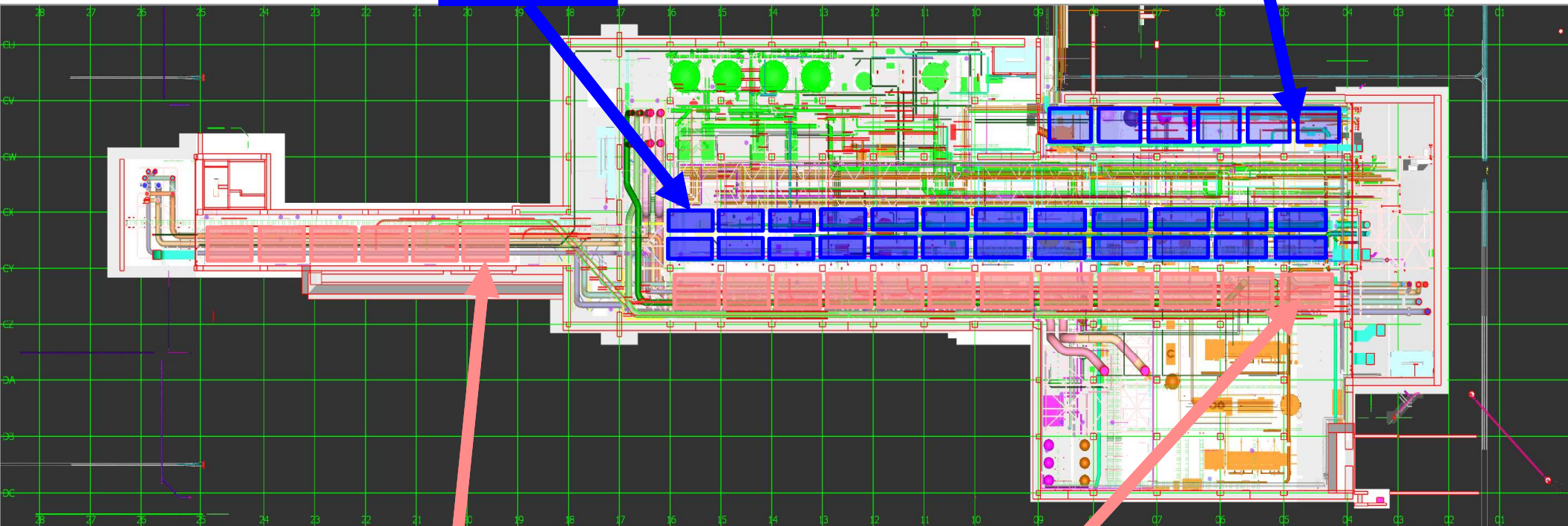
SUT 38.2 LEVEL

Rack 1B
Pending
lifting EQP

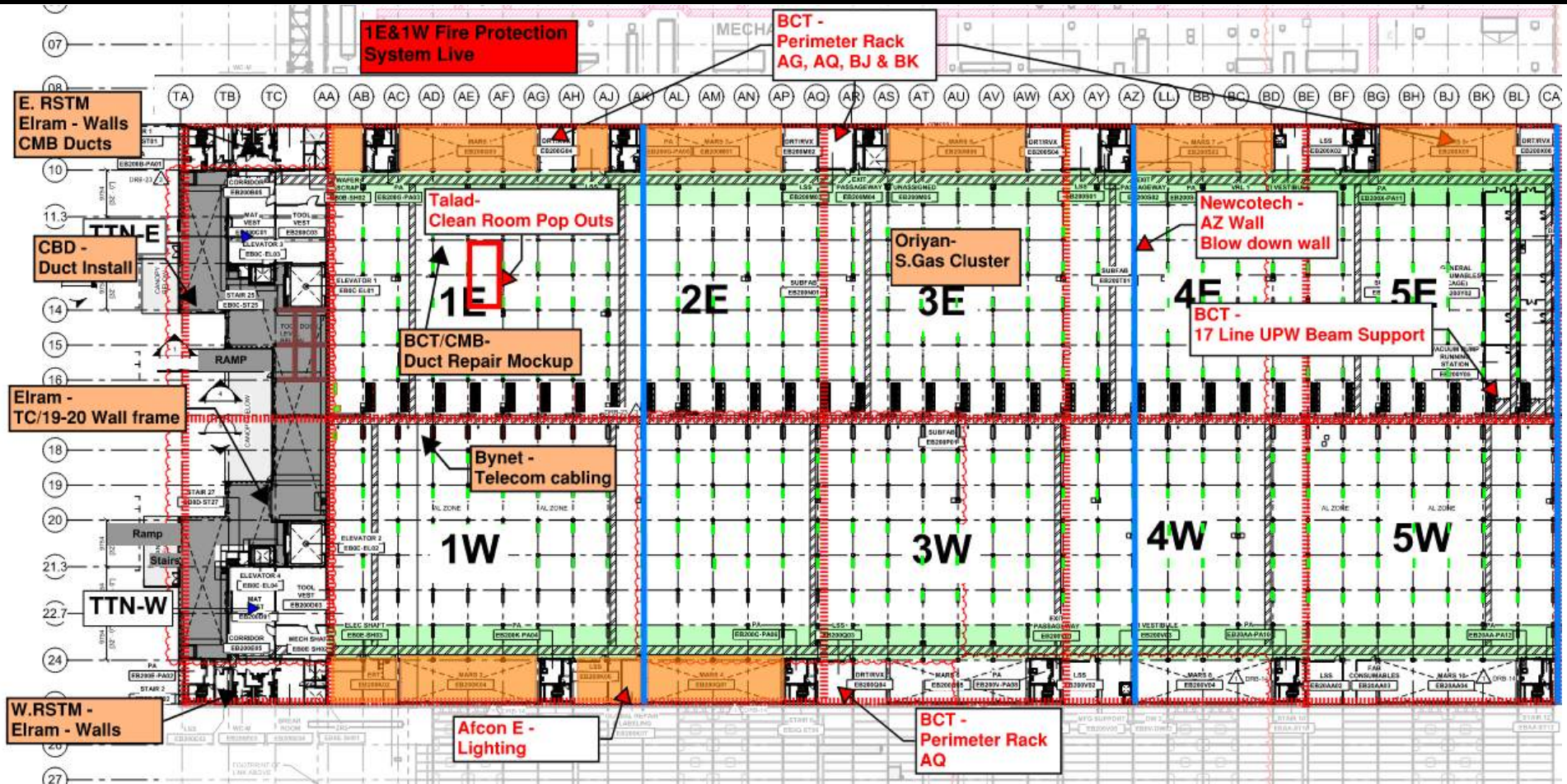
Rack 4b
Inter
Connection's

Rack 6
MIMO -
Module #1
16.2.25

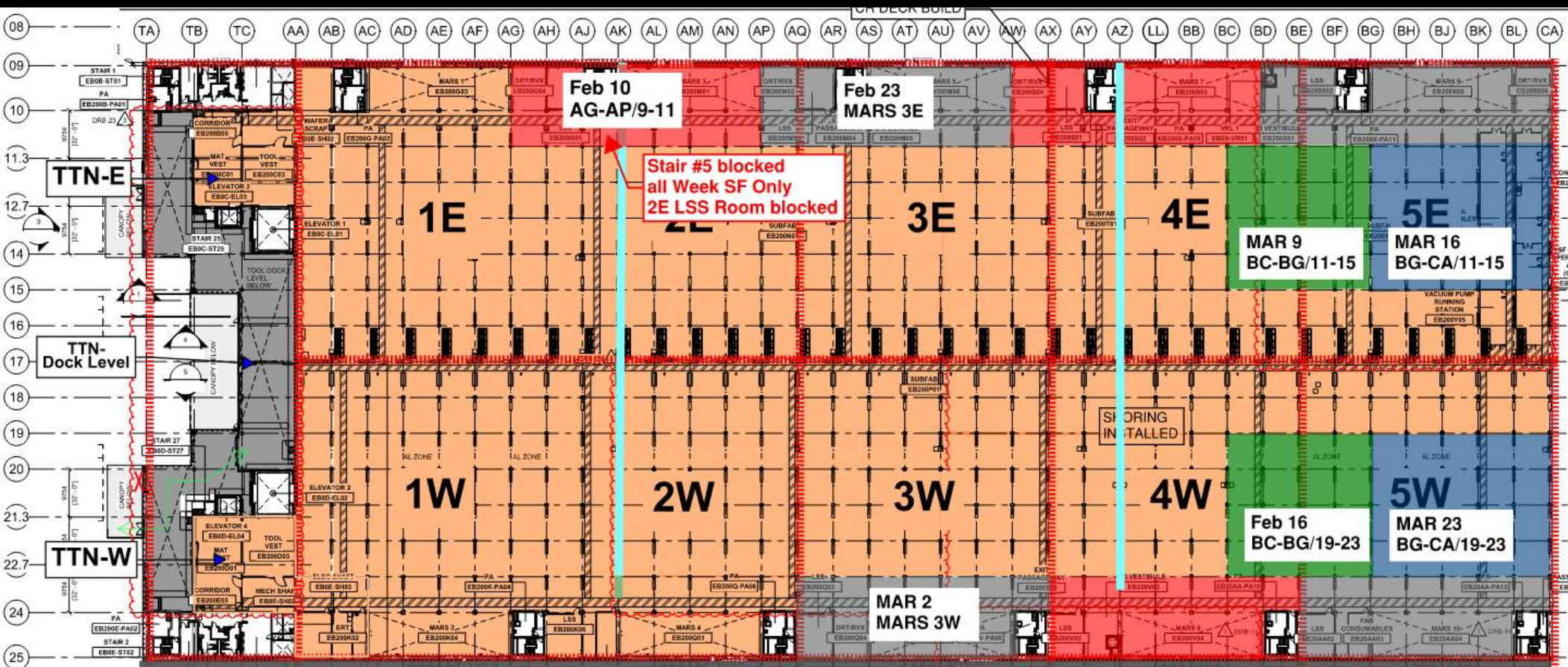
Rack 2
MIMO -
Module #12
10.2.25



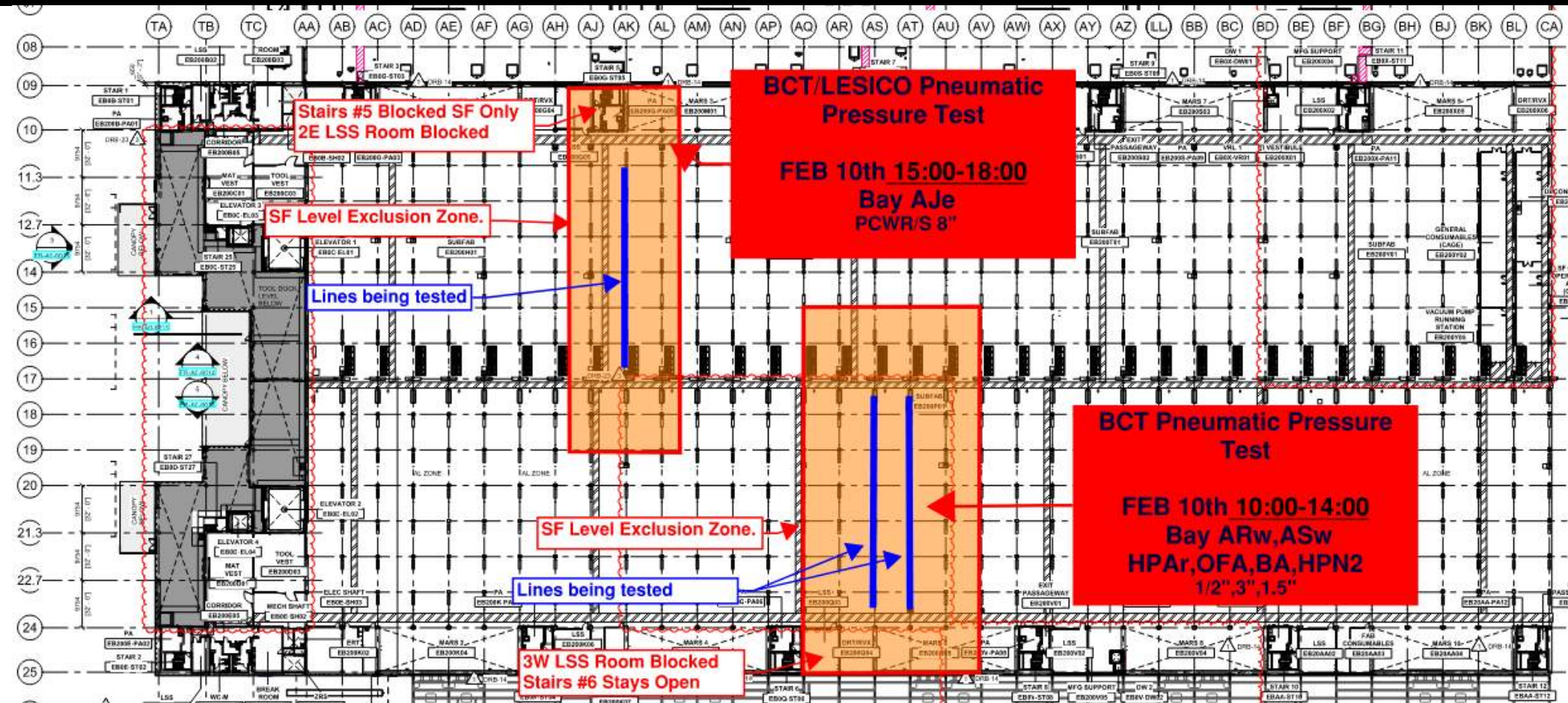
SUBFAB BUILDOUT MOD 1



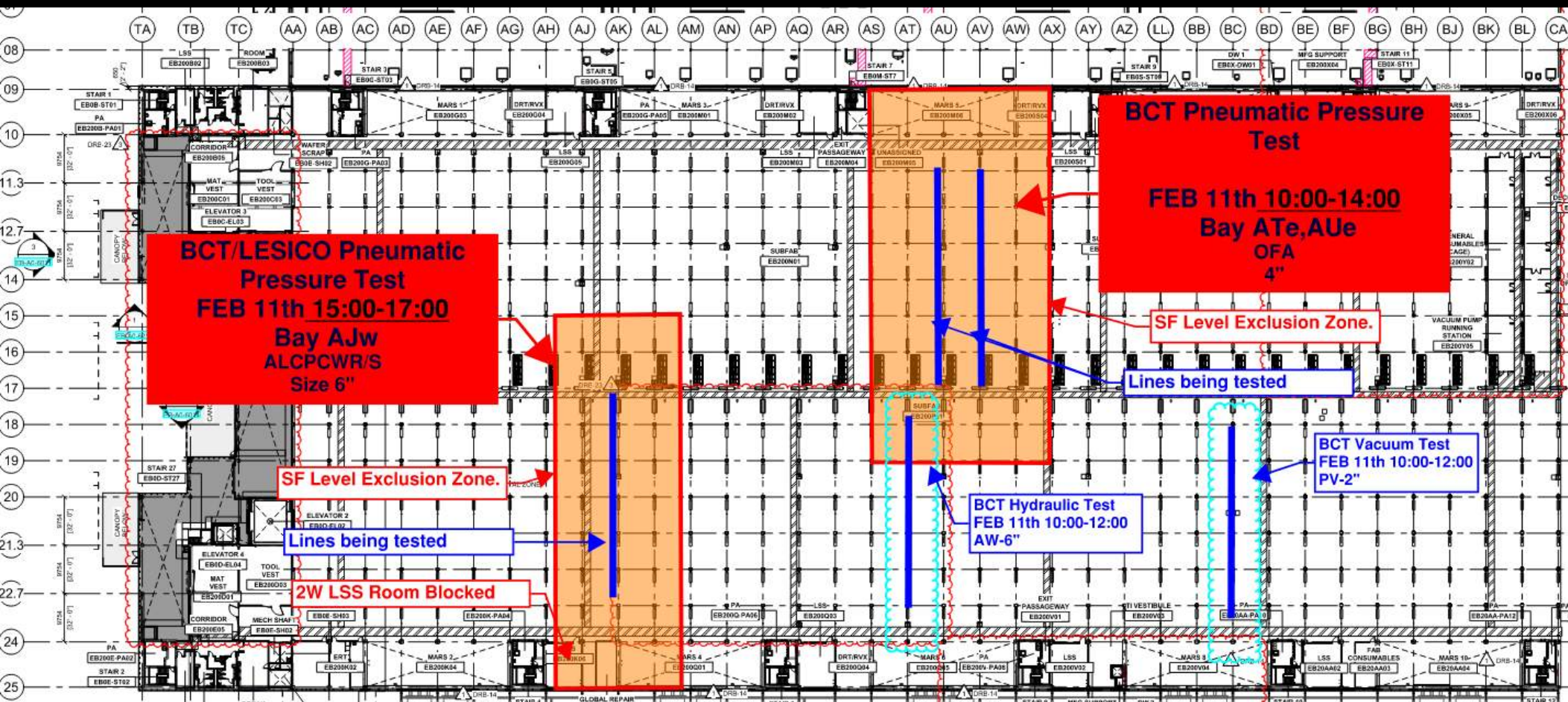
SUBFAB CRC TOPCOAT



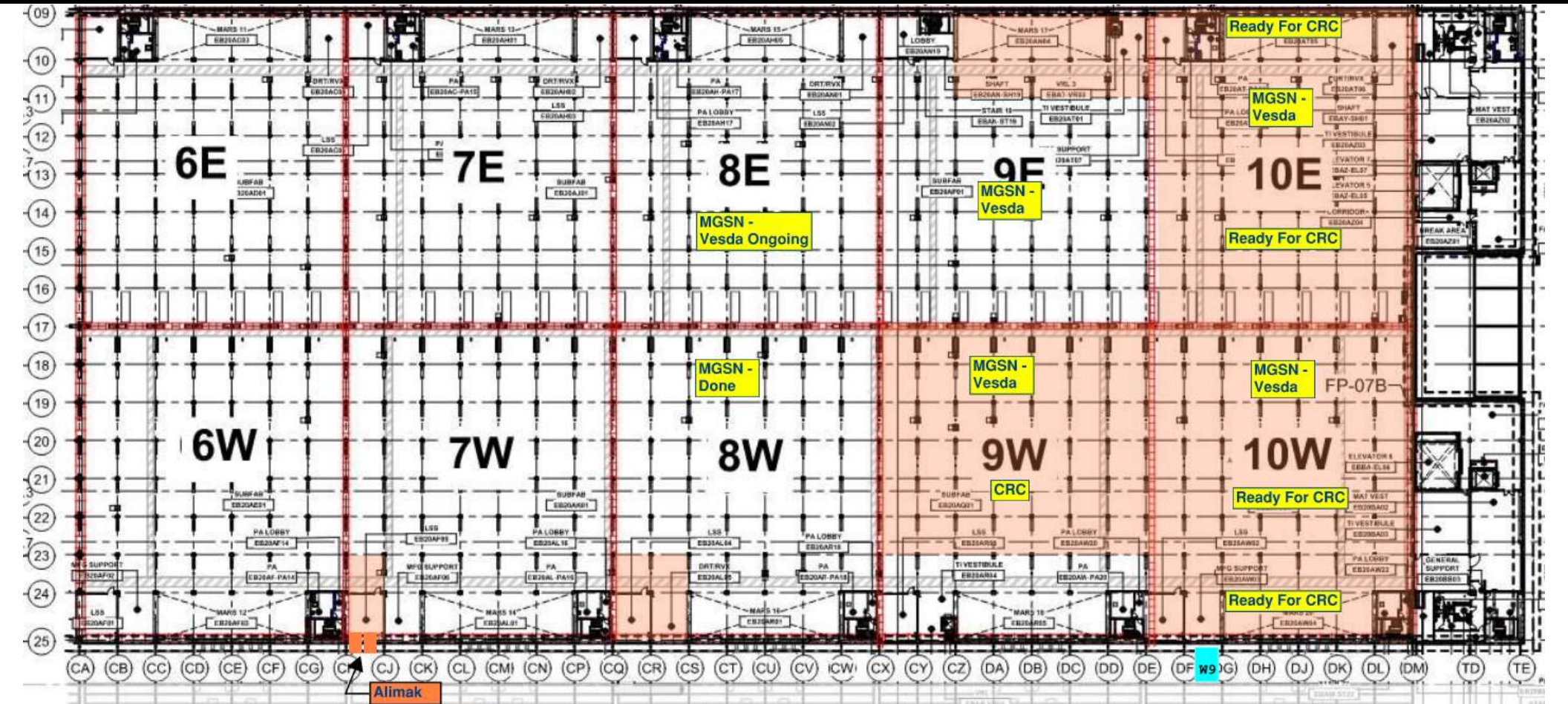
BCT Pressure Tests Today

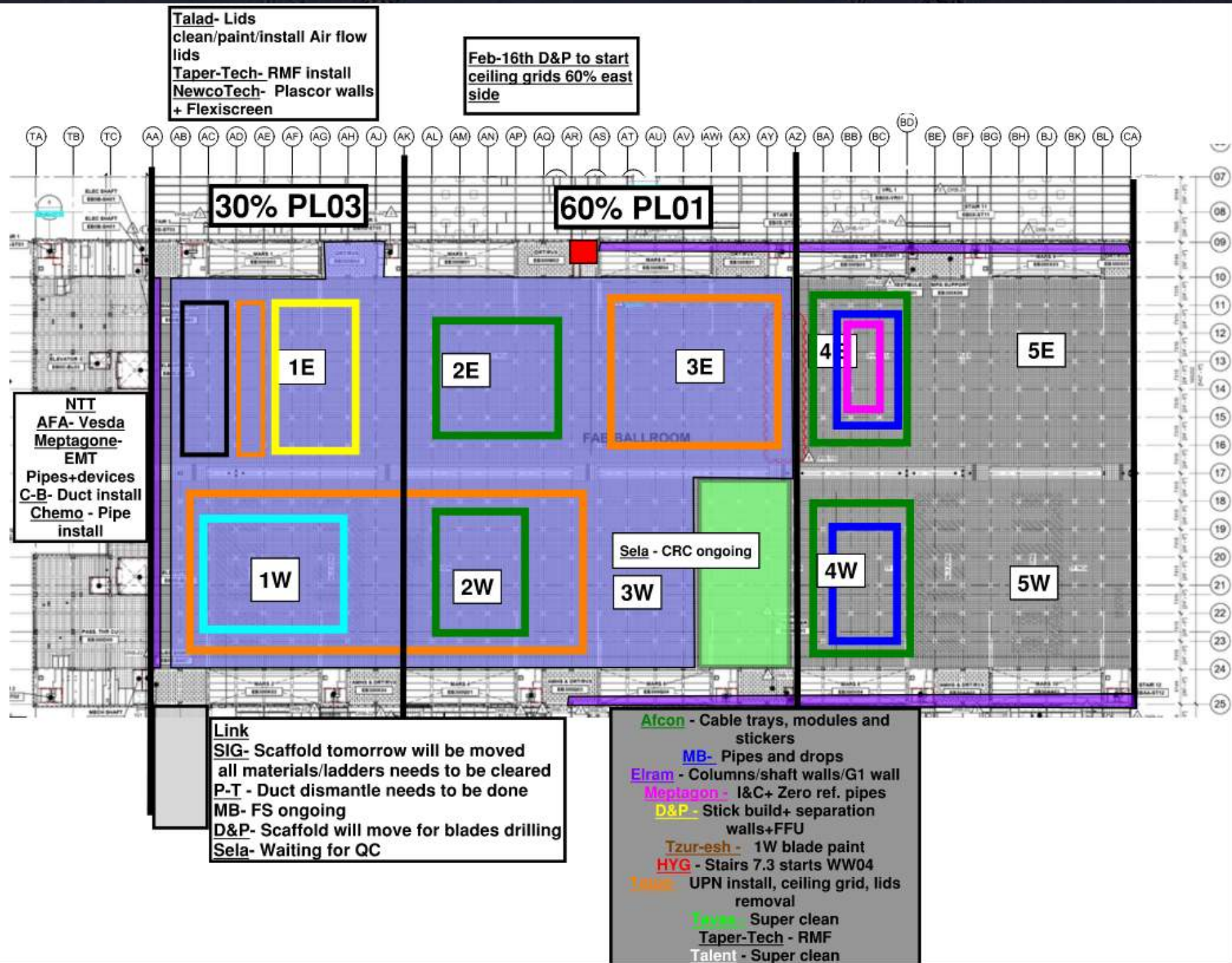


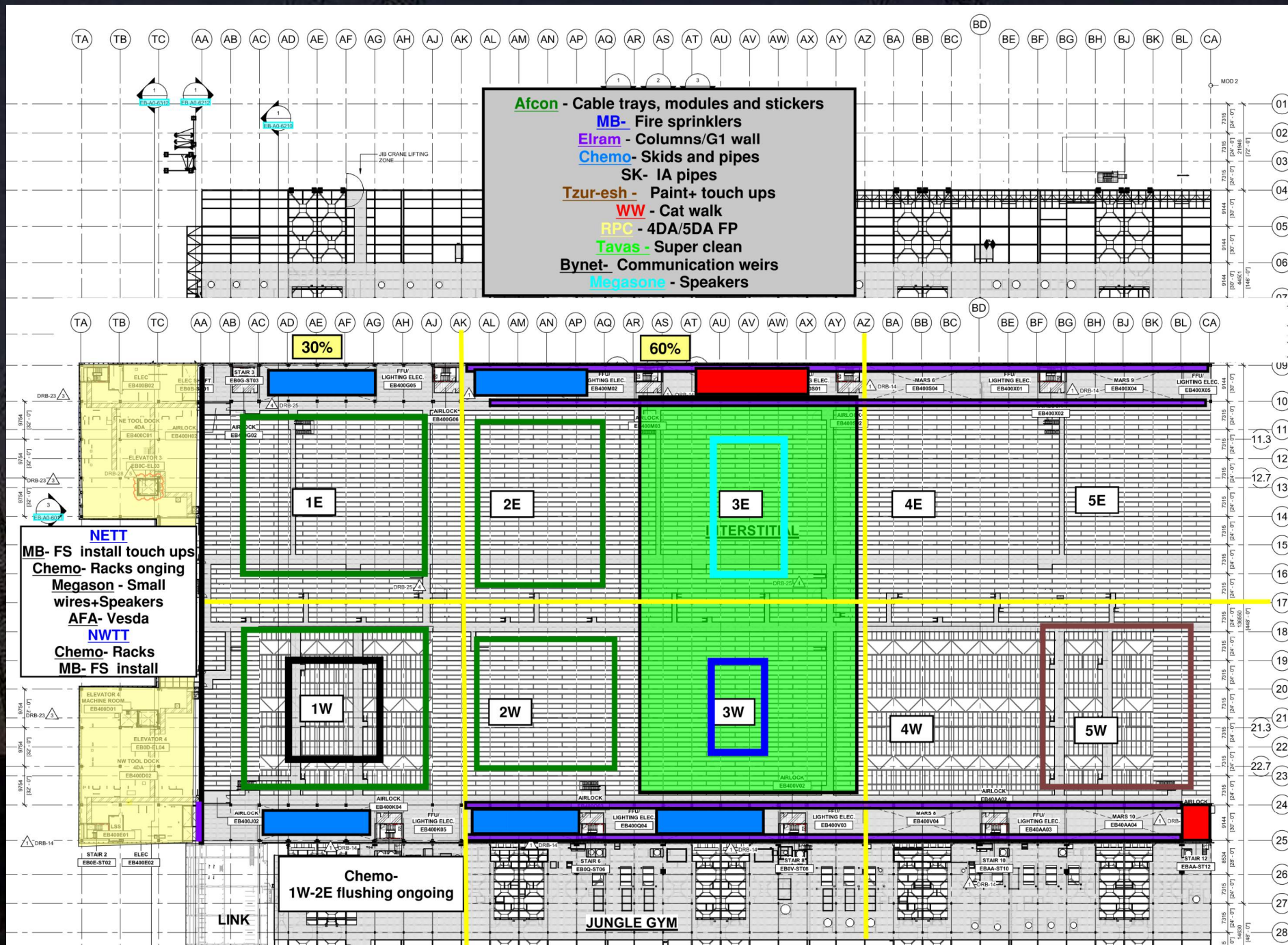
BCT Pressure Tests Tomorrow

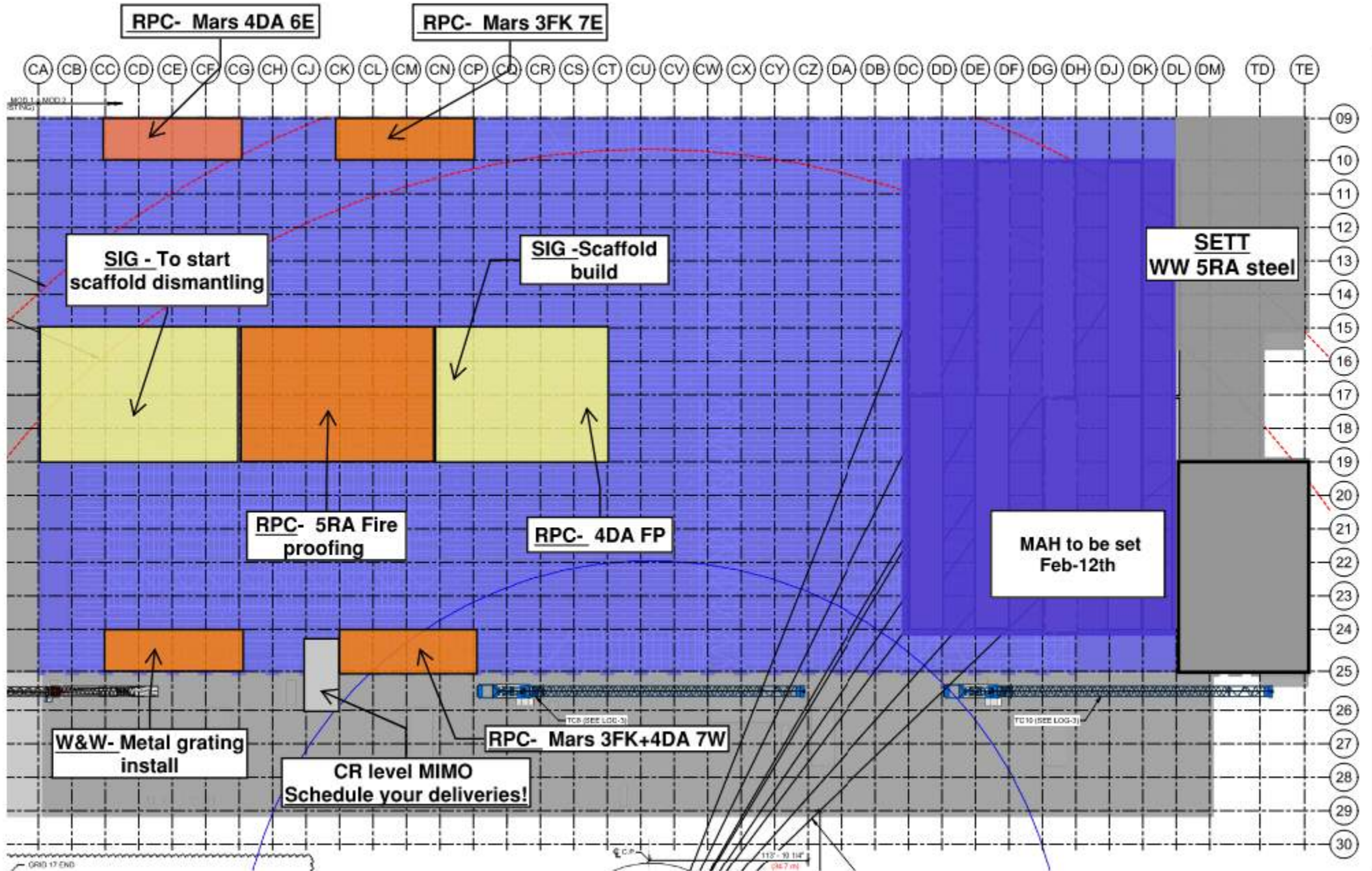


SUBFAB BUILDOUT MOD 2





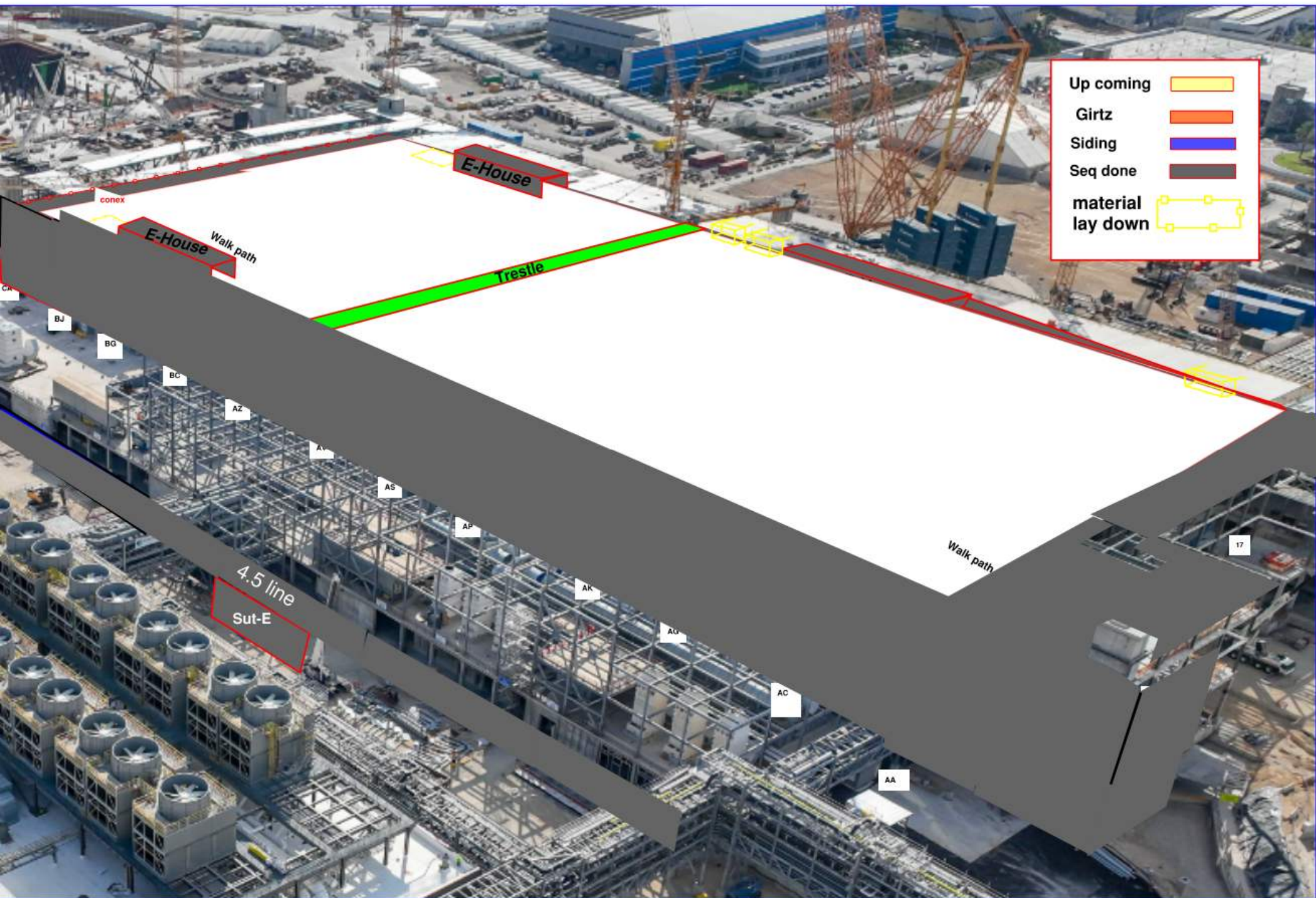


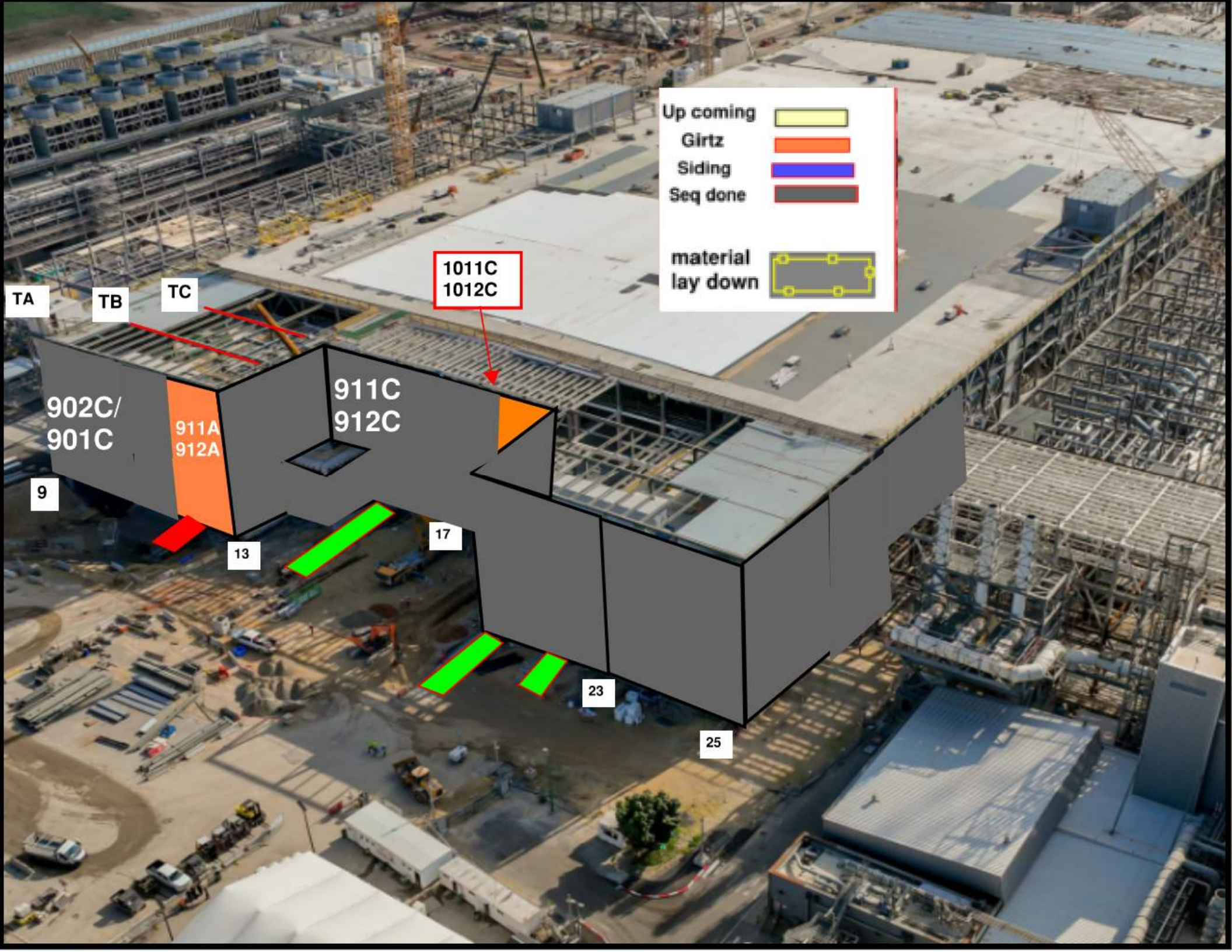




Alimak Shut Down
night Shift
Sunday + Monday
from 16:00 p.m till
05:00 a.m

LIFTS
WED
4.30





Up coming

Girtz

Siding

Seq done

material lay down

1011C
1012C

TA

TB

TC

902C/
901C

911A
912A

911C
912C

9

13

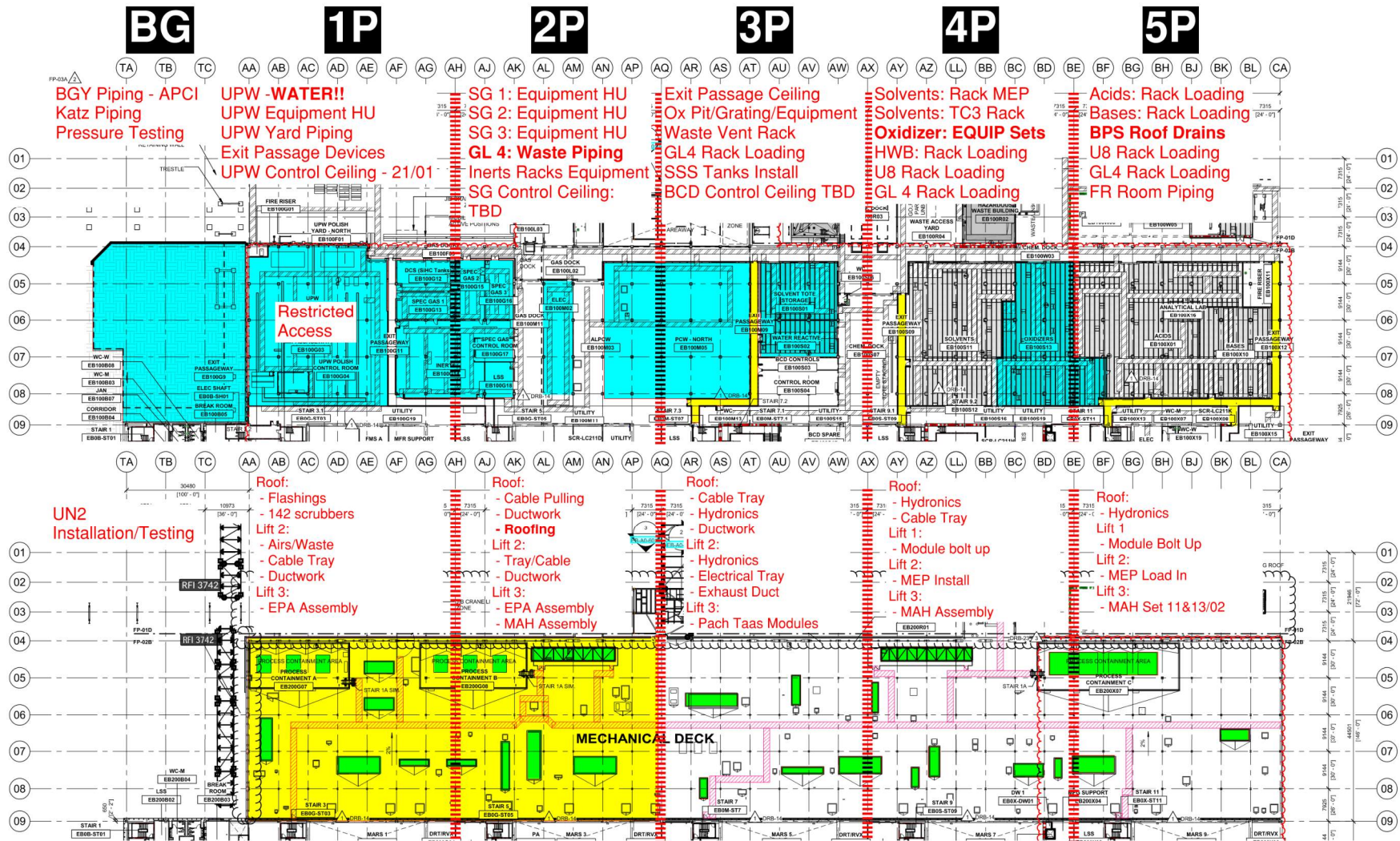
17

23

25



PSSS.1



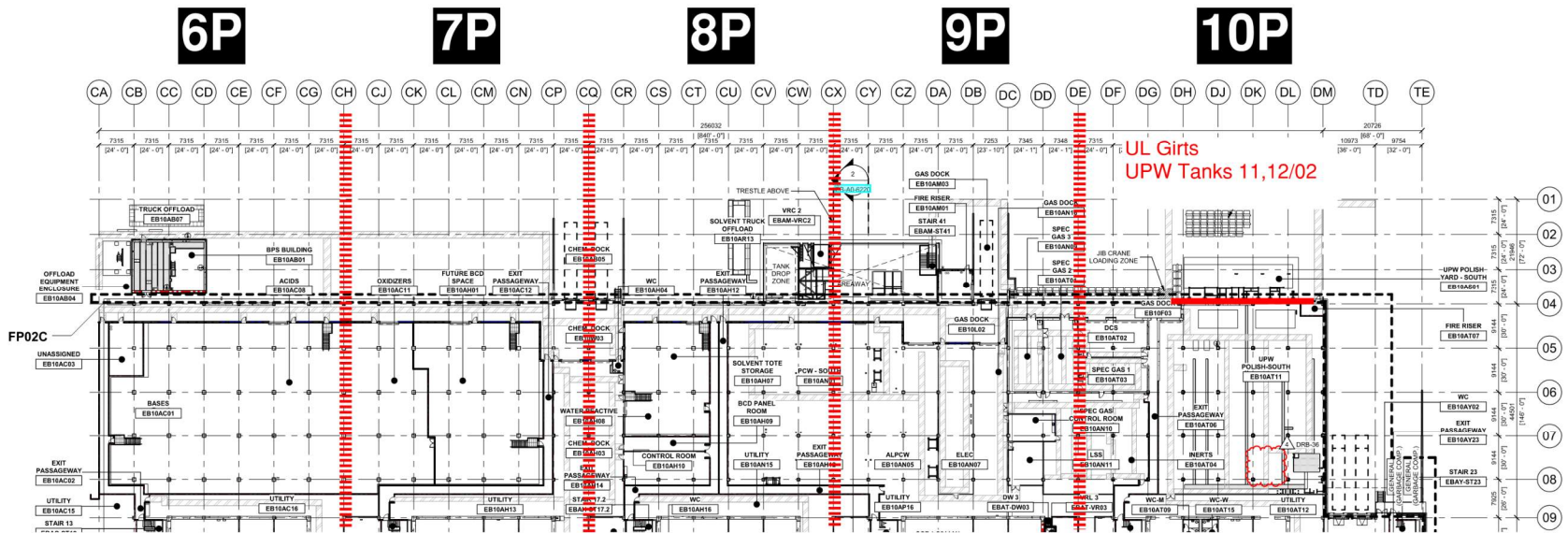
Utility Level

1YA

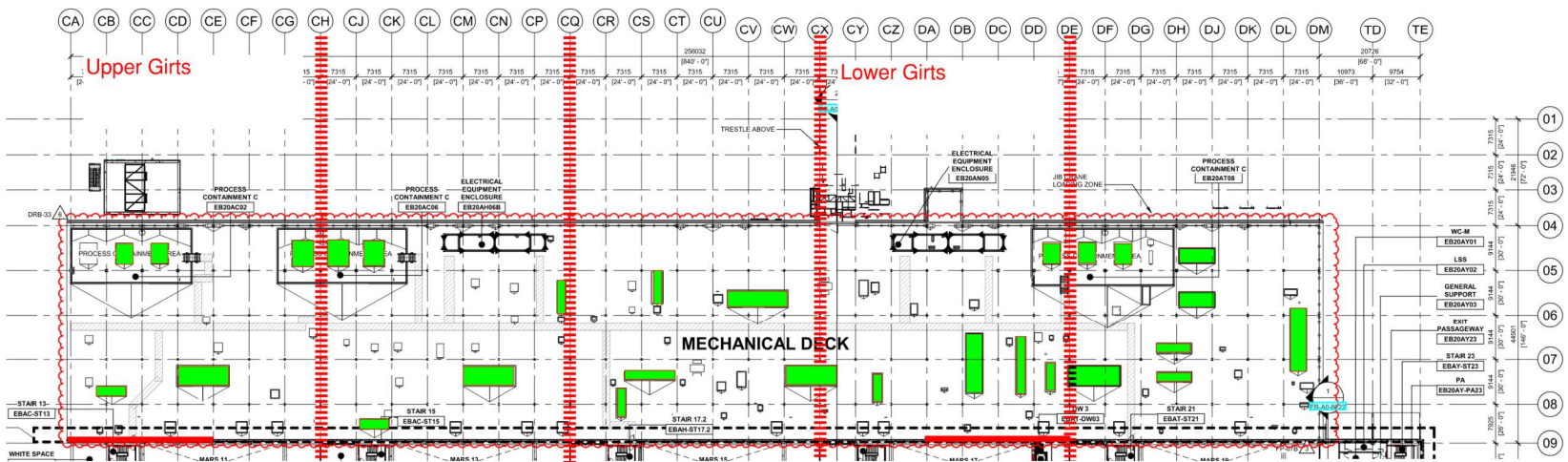
PSSS Roof 2SA

PSSS.2

Utility Level 1YA



PSSS Roof 2SA



PSSS 05/02 Pressure Tests

BG

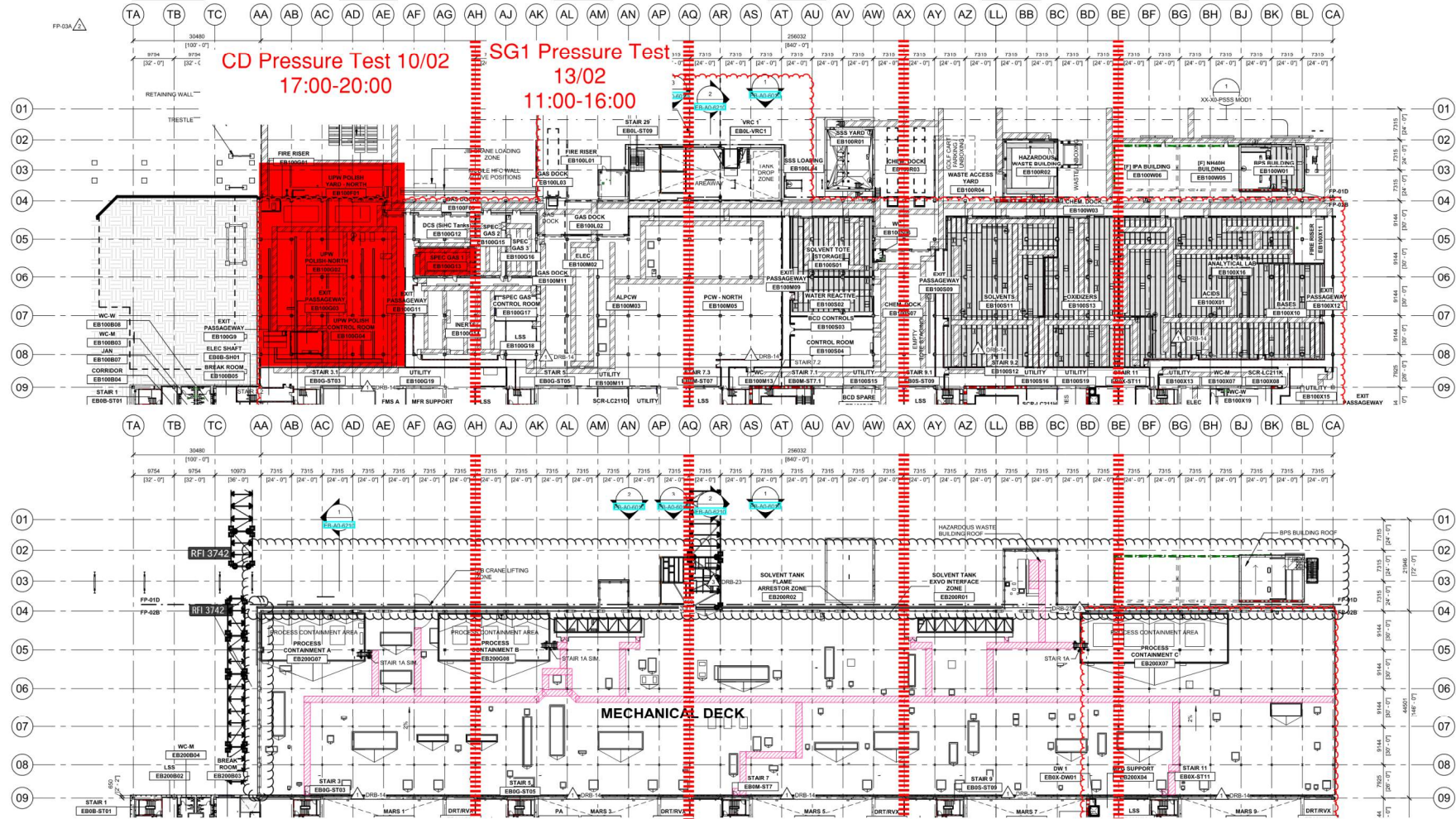
1P

2P

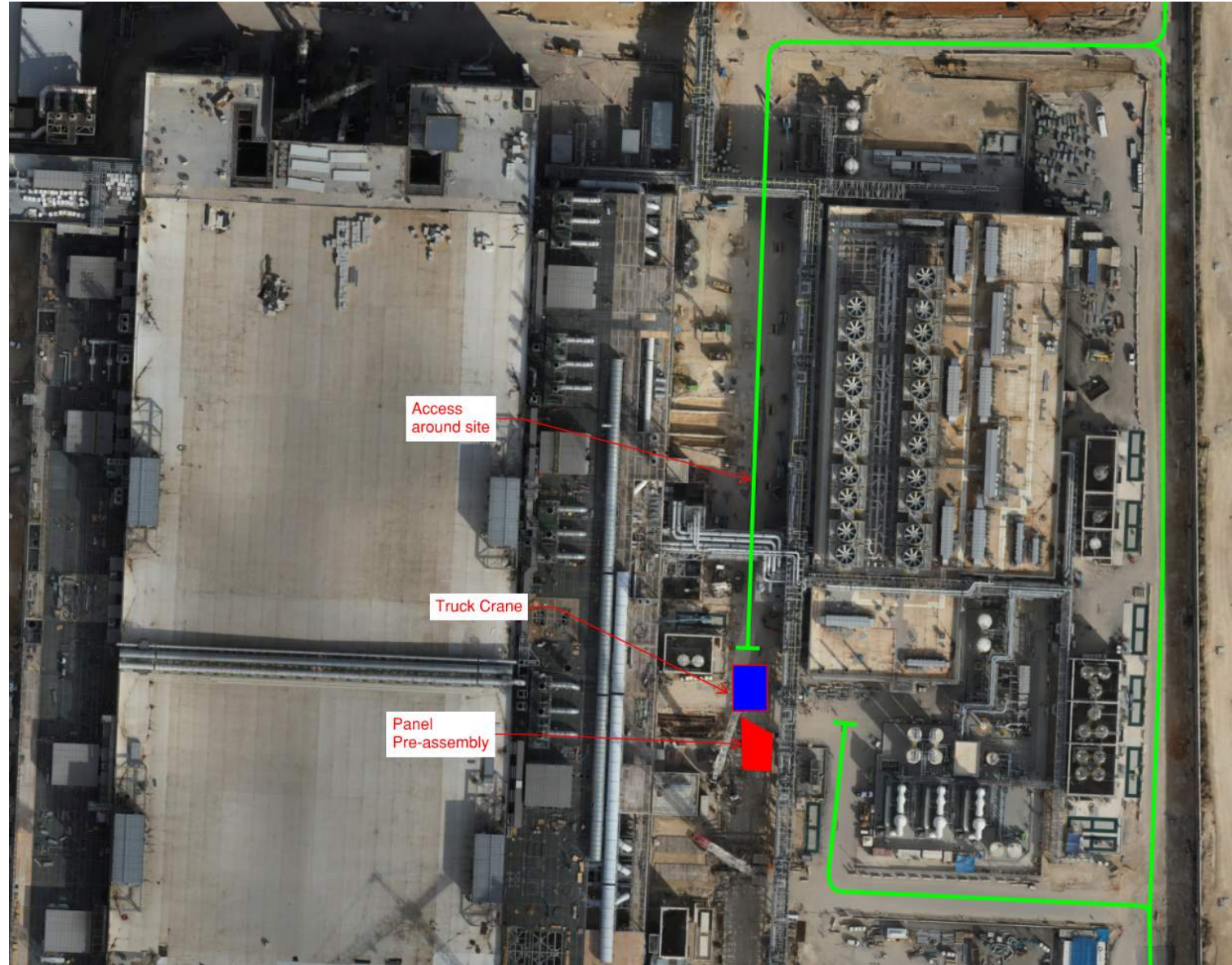
3P

4P

5P



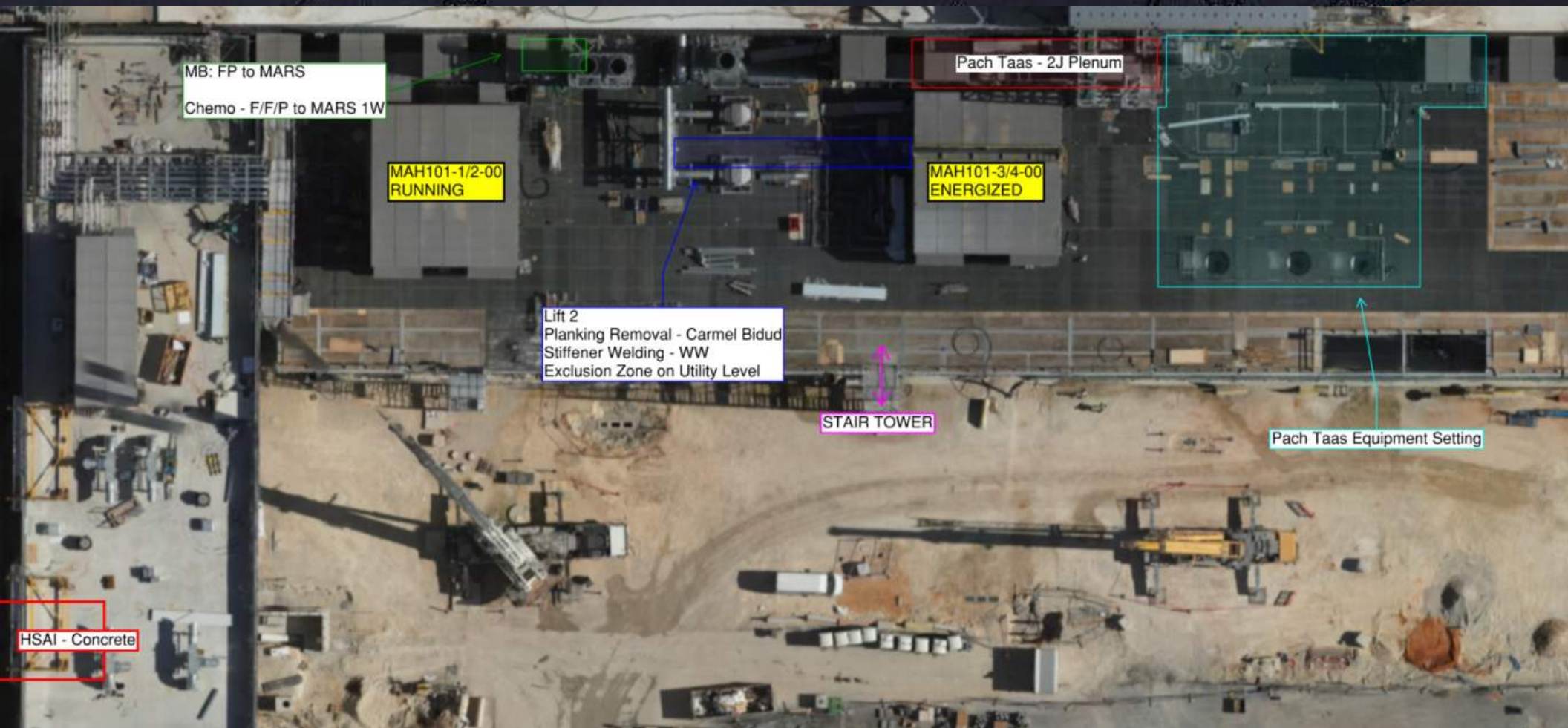
GUT ROAD
CLOSURE
10/02 @
14:00-18:00





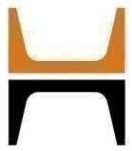


WJG 01J, 02J LIFT 2 & 3

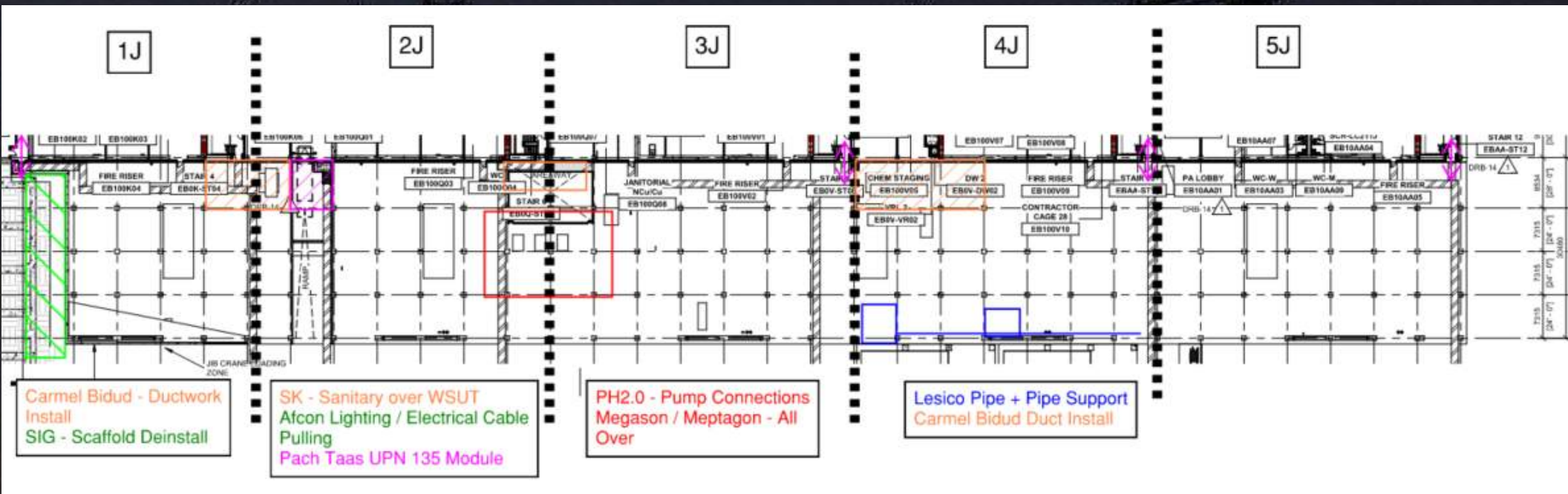


WJG 03J, 04J, 05J LIFT 2 & 3





WJG UTILITY LEVEL BUILD OUT



East Yard

BCS/BSA-JEA Pressure Test Jan.27 -Feb12

CUB 1 Evacuation Muster area North Yard

Paving North Yard WW 7

NORTH YARD

WATER TREATMENT

IW Blend Station Pipe support adjustments Feb. 2-6

CTB 114

SWS 237

ROP 242

URW 262

STAIR 1 (TO ROOF)

PA

LVSS Shut down for Com cable pull Feb 12 0900-1200 Brand Roxtec Firestopping ongoing

STAIR 3

STAIR 6

STAIR 8

STAIR 9

STAIR 10

STAIR 12

STAIR 13

STAIR 15

STAIR 16

STAIR 17

STAIR 20

STAIR 2 (TO ROOF)

STAIR 7

STAIR 11

STAIR 14

STAIR 18

STAIR 19

STAIR 21

STAIR 22

STAIR 23

STAIR 24

STAIR 25

STAIR 26

STAIR 27

STAIR 28

STAIR 29

STAIR 30

STAIR 31

STAIR 32

STAIR 33

STAIR 34

STAIR 35

STAIR 36

STAIR 37

STAIR 38

STAIR 39

STAIR 40

STAIR 41

STAIR 42

STAIR 43

STAIR 44

STAIR 45

STAIR 46

STAIR 47

STAIR 48

STAIR 49

STAIR 50

STAIR 51

STAIR 52

STAIR 53

STAIR 54

STAIR 55

STAIR 56

STAIR 57

STAIR 58

STAIR 59

STAIR 60

STAIR 61

STAIR 62

STAIR 63

STAIR 64

STAIR 65

STAIR 66

STAIR 67

STAIR 68

STAIR 69

STAIR 70

STAIR 71

STAIR 72

STAIR 73

STAIR 74

STAIR 75

STAIR 76

STAIR 77

STAIR 78

STAIR 79

STAIR 80

STAIR 81

STAIR 82

STAIR 83

STAIR 84

STAIR 85

STAIR 86

STAIR 87

STAIR 88

STAIR 89

STAIR 90

STAIR 91

STAIR 92

STAIR 93

STAIR 94

STAIR 95

STAIR 96

STAIR 97

STAIR 98

STAIR 99

STAIR 100

STAIR 101

STAIR 102

STAIR 103

STAIR 104

STAIR 105

STAIR 106

STAIR 107

STAIR 108

STAIR 109

STAIR 110

STAIR 111

STAIR 112

STAIR 113

STAIR 114

STAIR 115

STAIR 116

STAIR 117

STAIR 118

STAIR 119

STAIR 120

STAIR 121

STAIR 122

STAIR 123

STAIR 124

STAIR 125

STAIR 126

STAIR 127

STAIR 128

STAIR 129

STAIR 130

STAIR 131

STAIR 132

STAIR 133

STAIR 134

STAIR 135

STAIR 136

STAIR 137

STAIR 138

STAIR 139

STAIR 140

STAIR 141

STAIR 142

STAIR 143

STAIR 144

STAIR 145

STAIR 146

STAIR 147

STAIR 148

STAIR 149

STAIR 150

STAIR 151

STAIR 152

STAIR 153

STAIR 154

STAIR 155

STAIR 156

STAIR 157

STAIR 158

STAIR 159

STAIR 160

STAIR 161

STAIR 162

STAIR 163

STAIR 164

STAIR 165

STAIR 166

STAIR 167

STAIR 168

STAIR 169

STAIR 170

STAIR 171

STAIR 172

STAIR 173

STAIR 174

STAIR 175

STAIR 176

STAIR 177

STAIR 178

STAIR 179

STAIR 180

STAIR 181

STAIR 182

STAIR 183

STAIR 184

STAIR 185

STAIR 186

STAIR 187

STAIR 188

STAIR 189

STAIR 190

STAIR 191

STAIR 192

STAIR 193

STAIR 194

STAIR 195

STAIR 196

STAIR 197

STAIR 198

STAIR 199

STAIR 200

STAIR 201

STAIR 202

STAIR 203

STAIR 204

STAIR 205

STAIR 206

STAIR 207

STAIR 208

STAIR 209

STAIR 210

STAIR 211

STAIR 212

STAIR 213

STAIR 214

STAIR 215

STAIR 216

STAIR 217

STAIR 218

STAIR 219

STAIR 220

STAIR 221

STAIR 222

STAIR 223

STAIR 224

STAIR 225

STAIR 226

STAIR 227

STAIR 228

STAIR 229

STAIR 230

STAIR 231

STAIR 232

STAIR 233

STAIR 234

STAIR 235

STAIR 236

STAIR 237

STAIR 238

STAIR 239

STAIR 240

STAIR 241

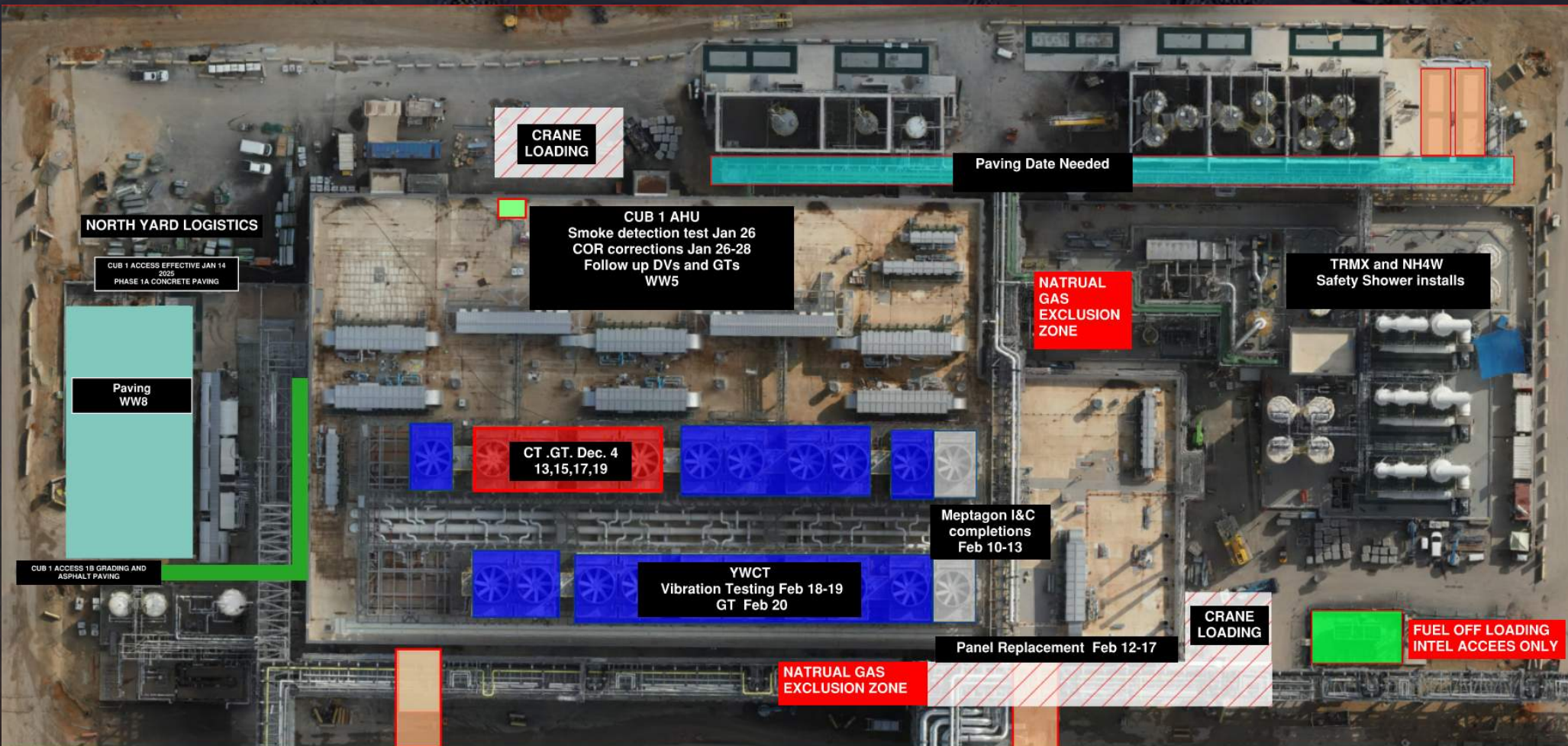
STAIR 242

STAIR 243

STAIR 244

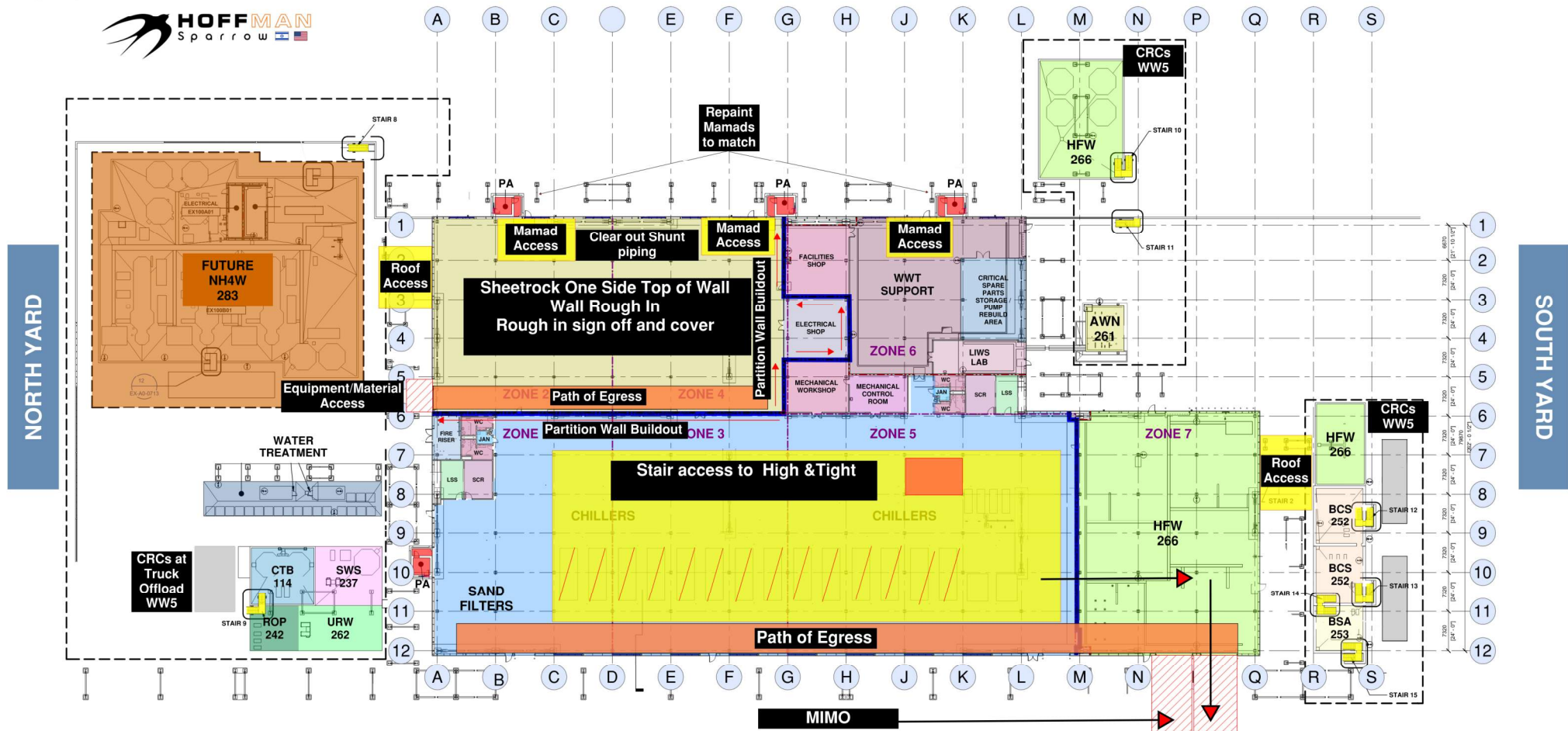
The diagram illustrates a cross-section of a bridge deck. A central vertical joint is indicated by a blue line. To the right of this joint, a rectangular area is shaded with blue diagonal lines and labeled "Damaged area" with a red arrow. To the left of the joint, a white diamond-shaped area contains a black arrow pointing upwards, labeled "Add vertical Joint" with a red arrow. A red circle with the letter "A" is positioned below the damaged area, with a red arrow pointing to it. The bridge deck is supported by a thick black base, and a series of vertical lines below the base represent the bridge piers.

CUB 1 – EXTERIOR/ROOF

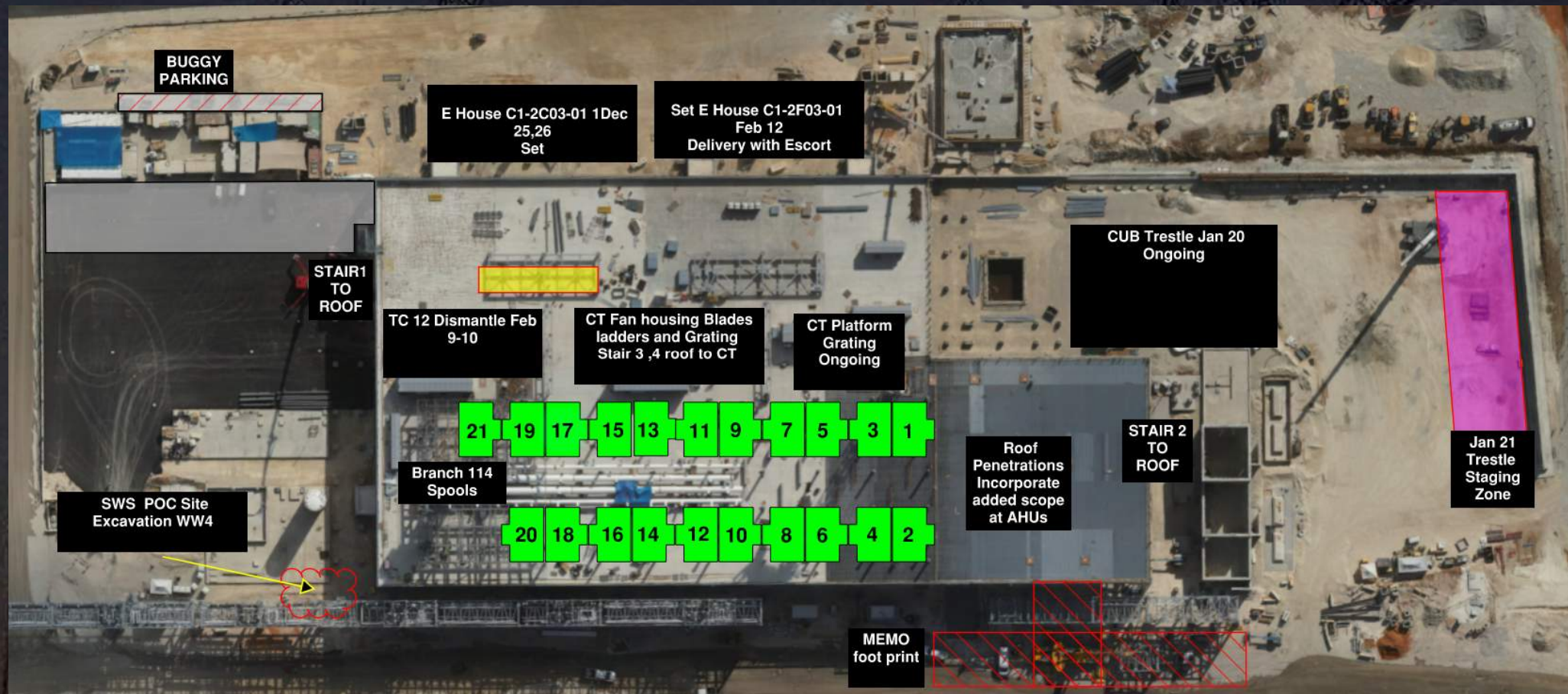


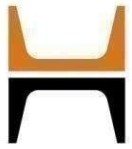
CUB 2- Load in ,H&T, Framing and Sheetrock

CUB 2 COORDINATION MAP

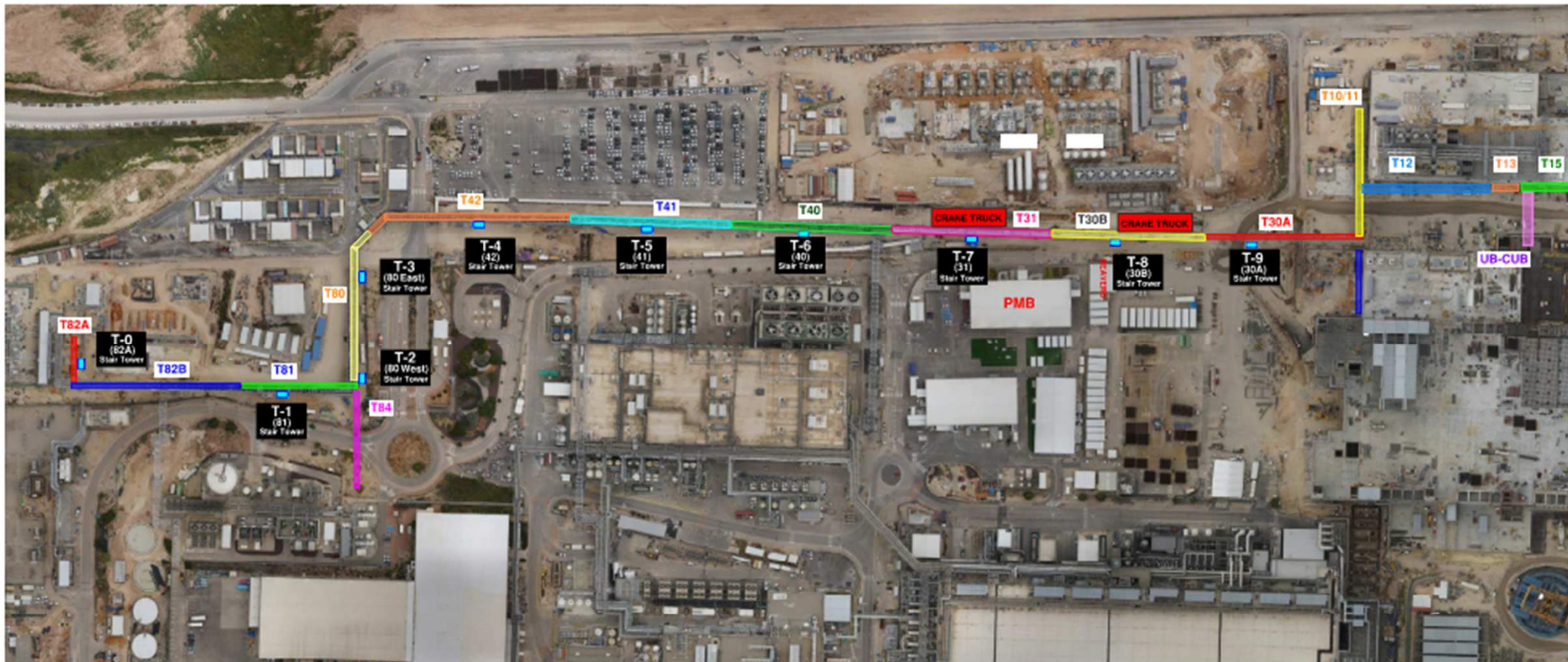


CUB 2 – EXTERIOR/ROOF





HOFFMAN CONSTRUCTION COMPANY





HOFFMAN CONSTRUCTION COMPANY



Daily Coordination Meeting

Site Logistics

North Entry





Daily Coordination Meeting

Site Logistics North





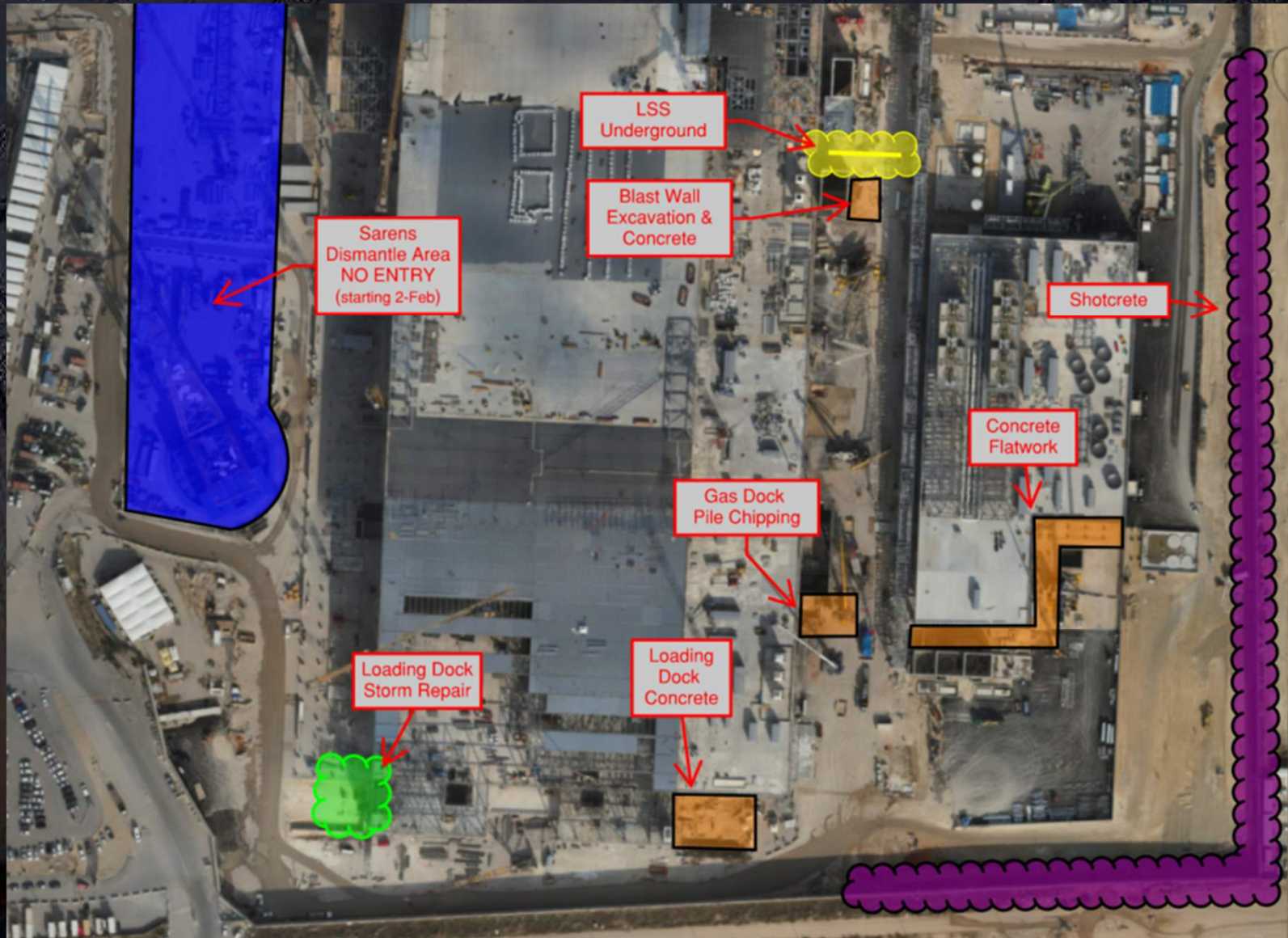
HOFFMAN CONSTRUCTION COMPANY



Daily Coordination Meeting

Site Logistics

South



Spotters & Operators

- Operators are responsible for the safe operation of their equipment/vehicle.
- When there is a spotter used to assist them with navigating through areas, they are also responsible for that person.
- This means, before they move their vehicle or equipment they need to verify the location of their spotter, make sure they are out of the moving path of the vehicle, and they need to communicate where they are moving.
- It can be deadly to not know where the spotter is, as they could be struck by the vehicle. Yes, spotters should not stand in the line of fire, but the added layer of defense here is for the operator to not move until they know exactly where their spotter is.
- This also allows the spotter to make sure that the operator can/should be moving in the planned direction.

Daily Coordination Meeting



14:00 Sign In